

V&V Reference Report

L2 ASCDS Version : 8.4.5

Observation 2040 - L2 Version 3
Chandra X-Ray Center

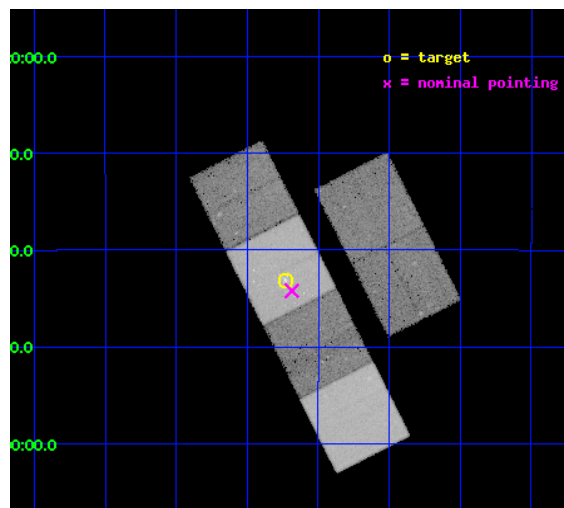
L2 Processing Date : Sep 17 2012

Contents

1	Front	2
2	OBI	3
2.1	OBI	3
2.1.1	Images	3
2.1.2	Bias	3
2.1.3	Parameters	4
2.1.4	Events	4
2.2	Compared Parameters	5
2.3	Aspect	6
2.4	Star Slots	9
2.4.1	Slot 3	9
2.4.2	Slot 4	10
2.4.3	Slot 5	11
2.4.4	Slot 6	12
2.4.5	Slot 7	13
2.5	FID Slots	14
2.5.1	Slot 0	14
2.5.2	Slot 1	15
2.5.3	Slot 2	16
A	Summary	17
A.1	Status	17
A.2	Comments	17

1 Front

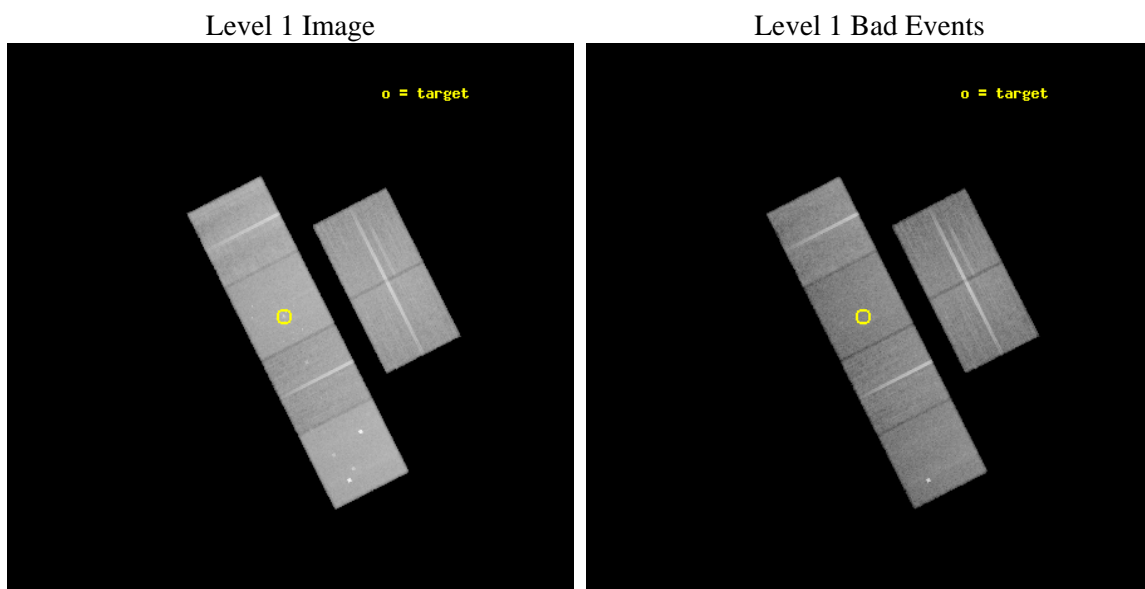
seq_num	600174	Sequence number
obs_id	2040	Observation id
title	THE VERY FAINTEST X-RAY FAINT EARLY-TYPE GALAXIES	Proposal title
observer	Professor JIMMY IRWIN	Principal investigator
object	NGC3115	Source name
dtcycle	0	
cycle	P	events from which exps? Prim/Second/Both
ra_targ	151.3075	Observer's specified target RA [deg]
dec_targ	-7.719167	Observer's specified target Dec [deg]
ra_nom	151.29642521591	Nominal RA [deg]
dec_nom	-7.7368973846878	Nominal Dec [deg]
roll_nom	243.11467079761	Nominal Roll [deg]
revision	3	Processing version of data
ontime	37452.800034866	Sum of GTIs [s]
livetime	36978.550129456	Livetime [s]
ontime2	37452.800034866	Sum of GTIs [s]
ontime3	37452.689349338	Sum of GTIs [s]
ontime5	37452.77142933	Sum of GTIs [s]
ontime6	37449.489429086	Sum of GTIs [s]
ontime7	37452.800034866	Sum of GTIs [s]
ontime8	37452.648309335	Sum of GTIs [s]
l2events	383978	Number of level 2 events



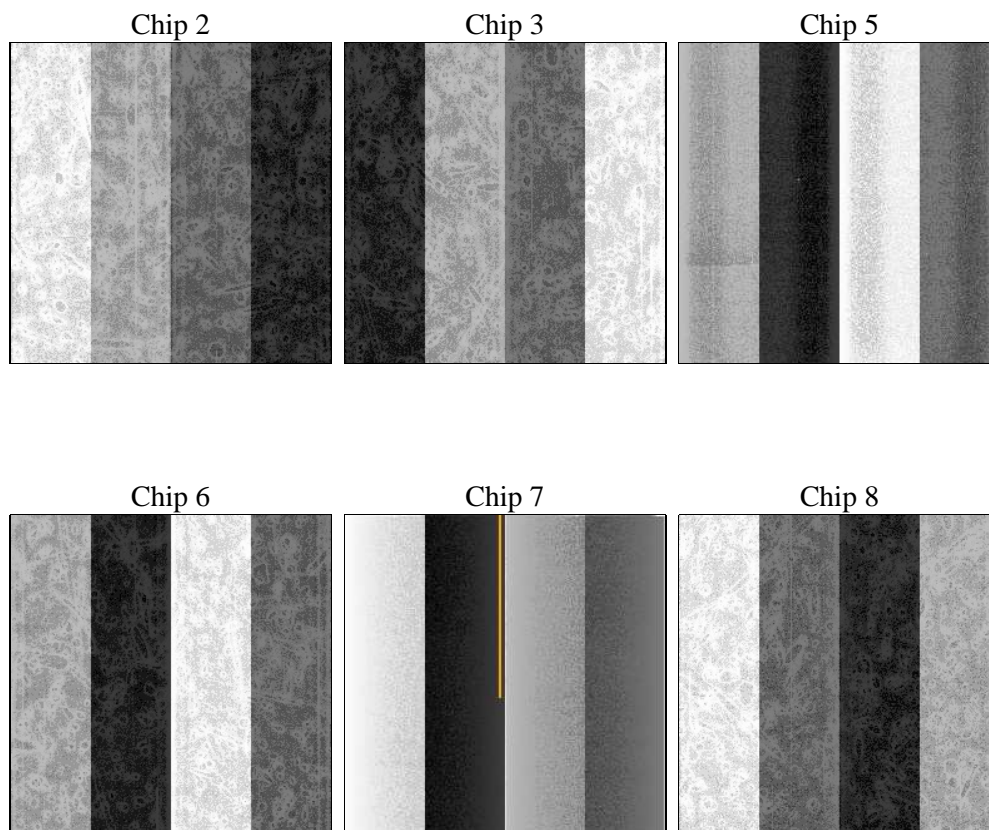
2 OBI

2.1 OBI

2.1.1 Images



2.1.2 Bias



2.1.3 Parameters

obi_num	0	Obi number	sched_exp_time	37500.000000	[s] Scheduled observation exposure time
ascdsver	8.4.5	Processing system revision	ontime	37452.800034866	Sum of GTIs [s]
caldbver	4.5.1.1	 	ontime2	37452.800034866	Sum of GTIs [s]
date	2012-09-17T22:32:46	Date and time of file creation	ontime3	37452.689349338	Sum of GTIs [s]
revision	3	Processing version of data	ontime5	37452.77142933	Sum of GTIs [s]
			ontime6	37449.489429086	Sum of GTIs [s]
			ontime7	37452.800034866	Sum of GTIs [s]
			ontime8	37452.648309335	Sum of GTIs [s]
			l1events	1737282	Number of level 1 events

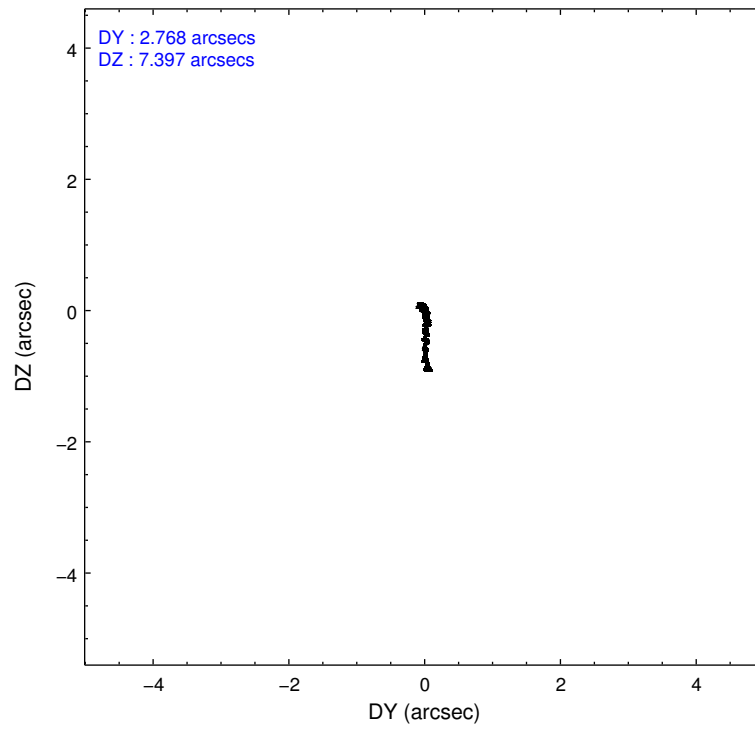
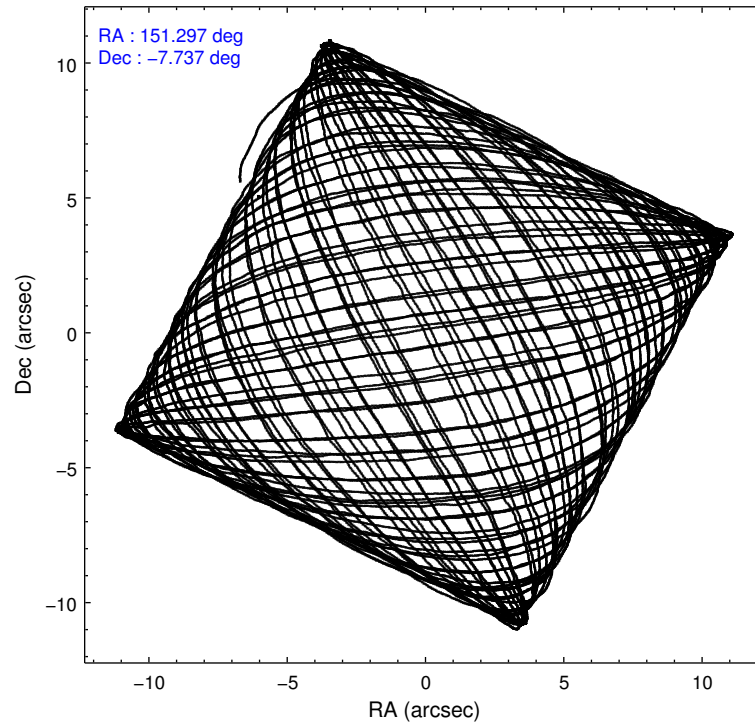
2.1.4 Events

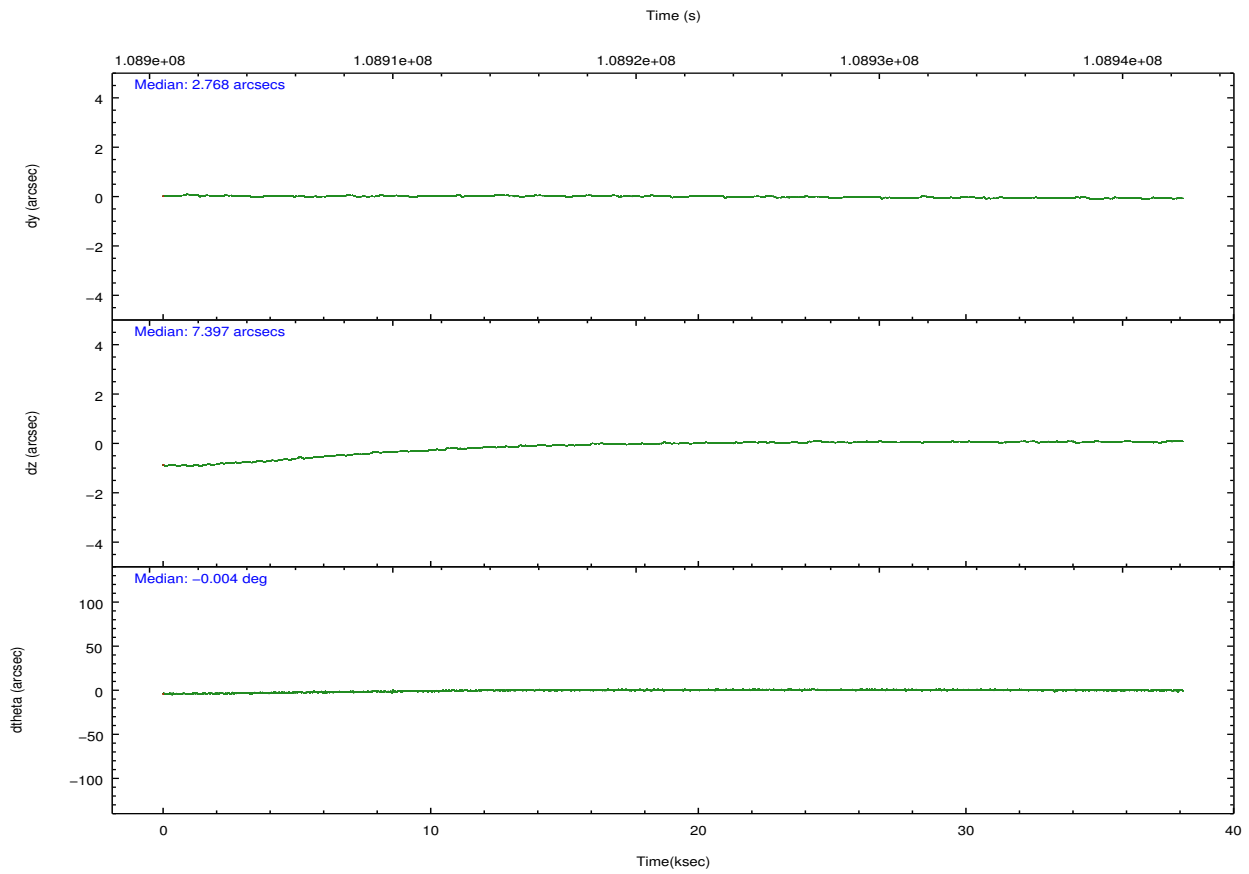
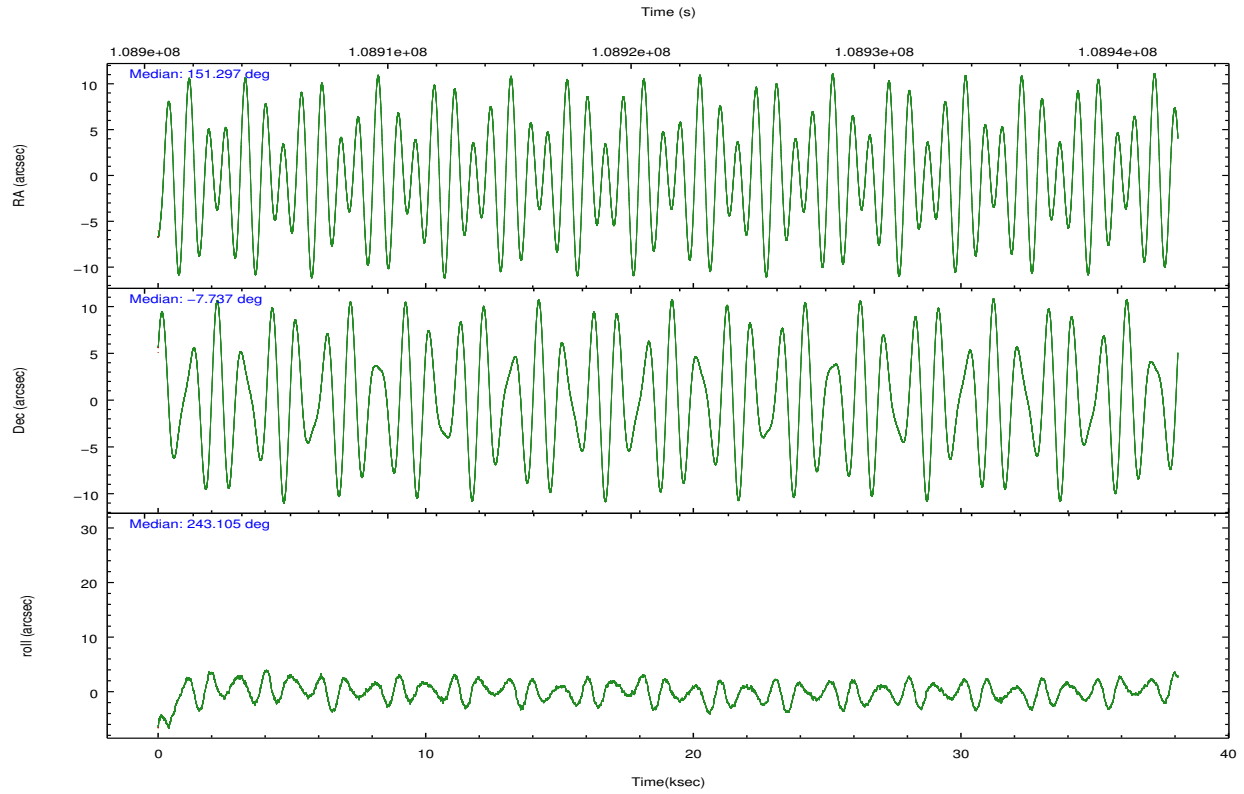
	ccd 2	ccd 3	ccd 5	ccd 6	ccd 7	ccd 8		ccd 2	ccd 3	ccd 5	ccd 6	ccd 7	ccd 8
level 1 events	258957	243823	353425	248233	320278	312566	grade 0 events	12487	12047	21468	12247	14097	22118
rejected events	230193	215668	188849	218712	184179	244558		4%	4%	6%	4%	4%	7%
rejected %	88%	88%	53%	88%	57%	78%	grade 1 events	117	122	354	146	275	194
								0%	0%	0%	0%	0%	0%
							grade 2 events	6174	5711	46422	5805	26870	13660
								2%	2%	13%	2%	8%	4%
							grade 3 events	2524	2719	8132	2857	12480	8209
								0%	1%	2%	1%	3%	2%
							grade 4 events	2588	2607	6903	2866	12461	7537
								0%	1%	1%	1%	3%	2%
							grade 5 events	8524	9381	27950	10469	30106	12961
								3%	3%	7%	4%	9%	4%
							grade 6 events	4997	5071	81663	5748	70205	16486
								1%	2%	23%	2%	21%	5%
							grade 7 events	221546	206165	160533	208095	153784	231401
								85%	84%	45%	83%	48%	74%

2.2 Compared Parameters

Parameter	Planned	Actual	Parameter	Planned	Actual
Instrument	ACIS	ACIS	Obspar format version number	7	7
Detector	ACIS-235678	ACIS-235678	Obspar file type	PREDICTED	ACTUAL
Grating	NONE	NONE	Obspar update status	NONE	UPDATED
Data mode	FAINT	FAINT	Number of optional ACIS chips dropped	0	0
Observation mode	POINTING	POINTING	On-chip summing requested	N	N
[deg] Pointing RA	151.294639	151.2964252159083	Subarray requested	NONE	NONE
[deg] Pointing Dec	-7.709673	-7.736897384687813	Alternating exposures requested	N	N
[deg] Pointing Roll	242.957804	243.1146707976132	[s] Primary exposure time	0.000000	3.2
[mm] SIM focus pos	-0.684267	-0.6828225247311905			
[mm] SIM defocus	0	0.001444936568705701			
[mm] SIM translation stage pos	-190.132523	-190.1400660498719			
[mm] SIM translation stage offset	0	0.00754346686406393			
[s] Observation start time (MET)	108903072.184000	108901909.36335			
Observation start date	2001-06-14T10:50:08	2001-06-14T10:31:49			
[s] Observation end time (MET)	108940572.184000	108941127.91488			
Observation end date	2001-06-14T21:15:08	2001-06-14T21:25:27			
Read mode	TIMED	TIMED			

2.3 Aspect



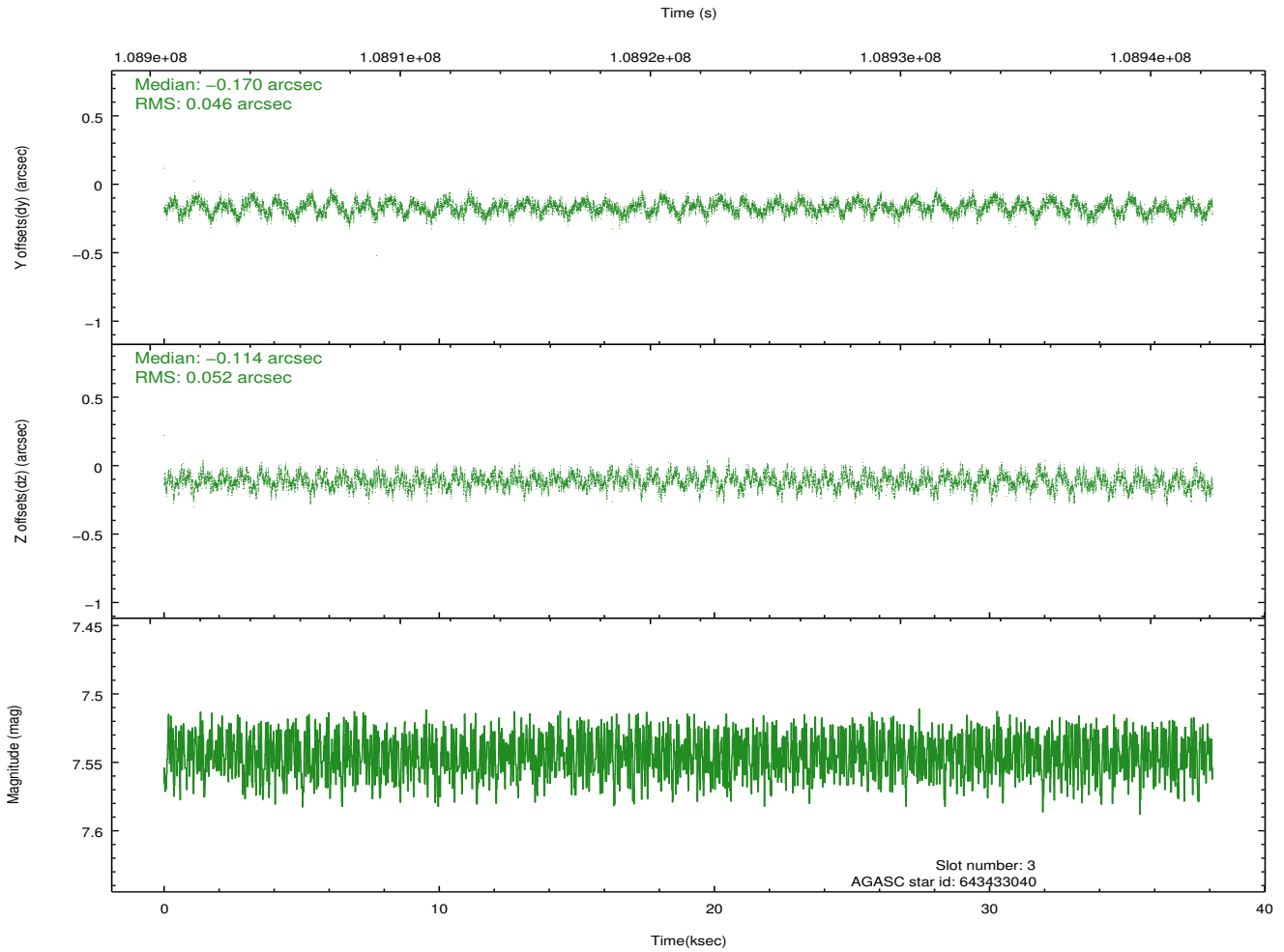
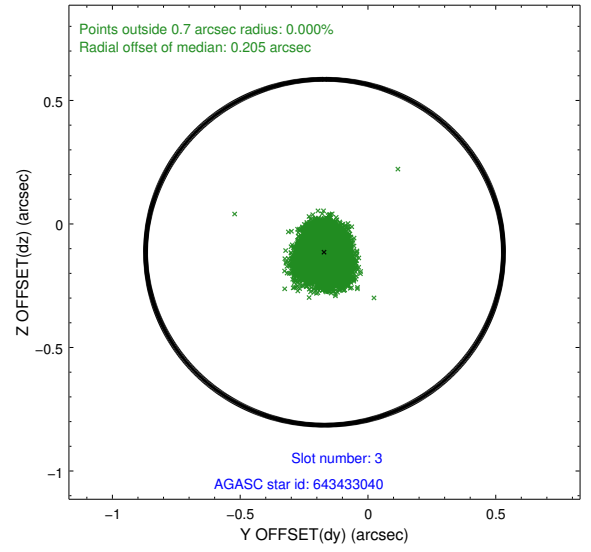
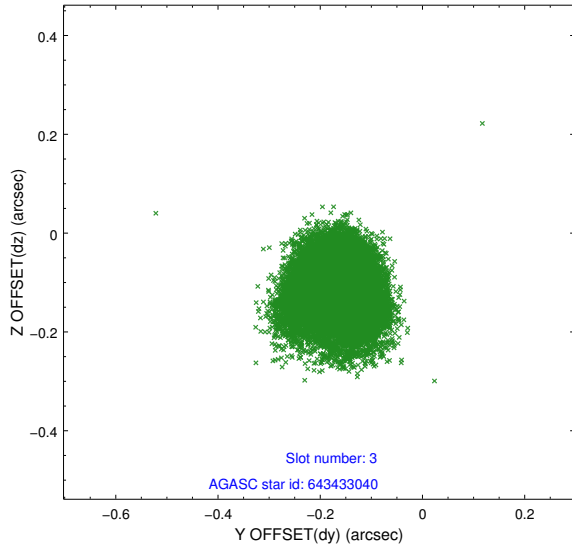


Slot Statistics

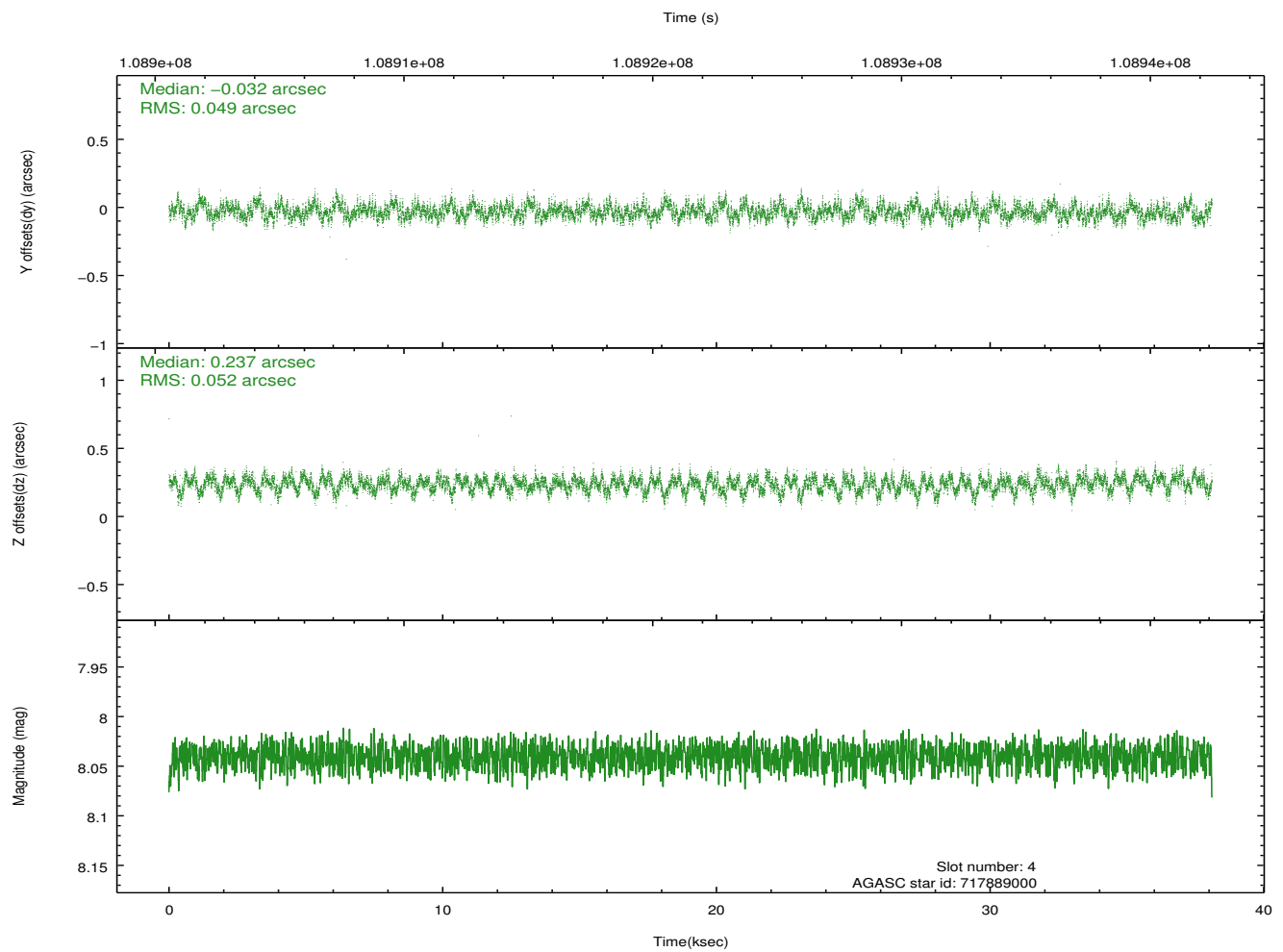
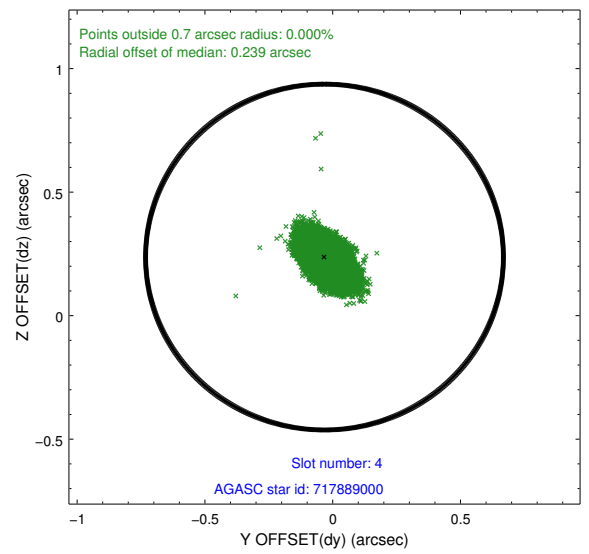
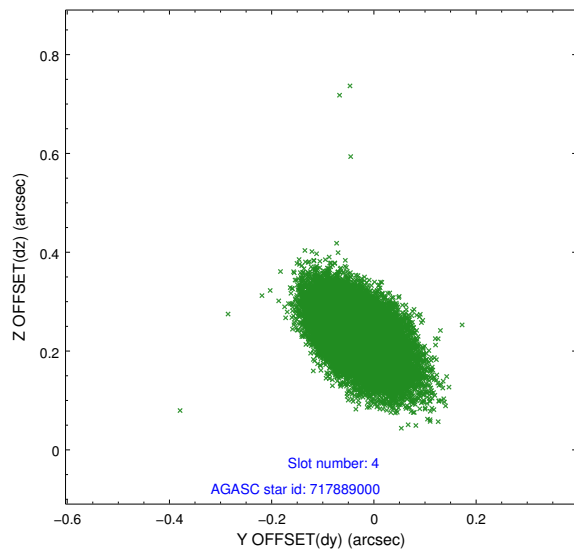
slot	status	id	mag	n_pts	med_dy	med_dz	dr1	dr2	ra	dec	mean_y	mean_z
0	FID	ACIS-S-2	7.11	9295	-0.000	0.010	0.010	0.020	0.000000	0.000000	-755.40	-1728.40
1	FID	ACIS-S-4	7.19	9293	-0.066	-0.003	0.010	0.024	0.000000	0.000000	2157.80	180.04
2	FID	ACIS-S-5	7.24	9291	0.035	0.002	0.010	0.021	0.000000	0.000000	-1808.17	173.75
3	GUIDE	643433040	7.54	18587	-0.170	-0.114	0.076	0.116	151.111617	-7.218386	-1276.70	-1386.20
4	GUIDE	717889000	8.04	18588	-0.032	0.237	0.074	0.126	151.849024	-7.724812	-848.82	1786.86
5	GUIDE	717750312	8.99	18584	0.034	0.005	0.077	0.124	150.984877	-7.661913	350.90	-1062.13
6	GUIDE	717752784	8.77	18581	0.089	-0.024	0.095	0.149	150.621335	-8.064937	2233.44	-1554.96
7	GUIDE	717751144	10.08	18574	0.088	-0.112	0.226	0.361	150.941883	-7.520568	-32.02	-1430.76

2.4 Star Slots

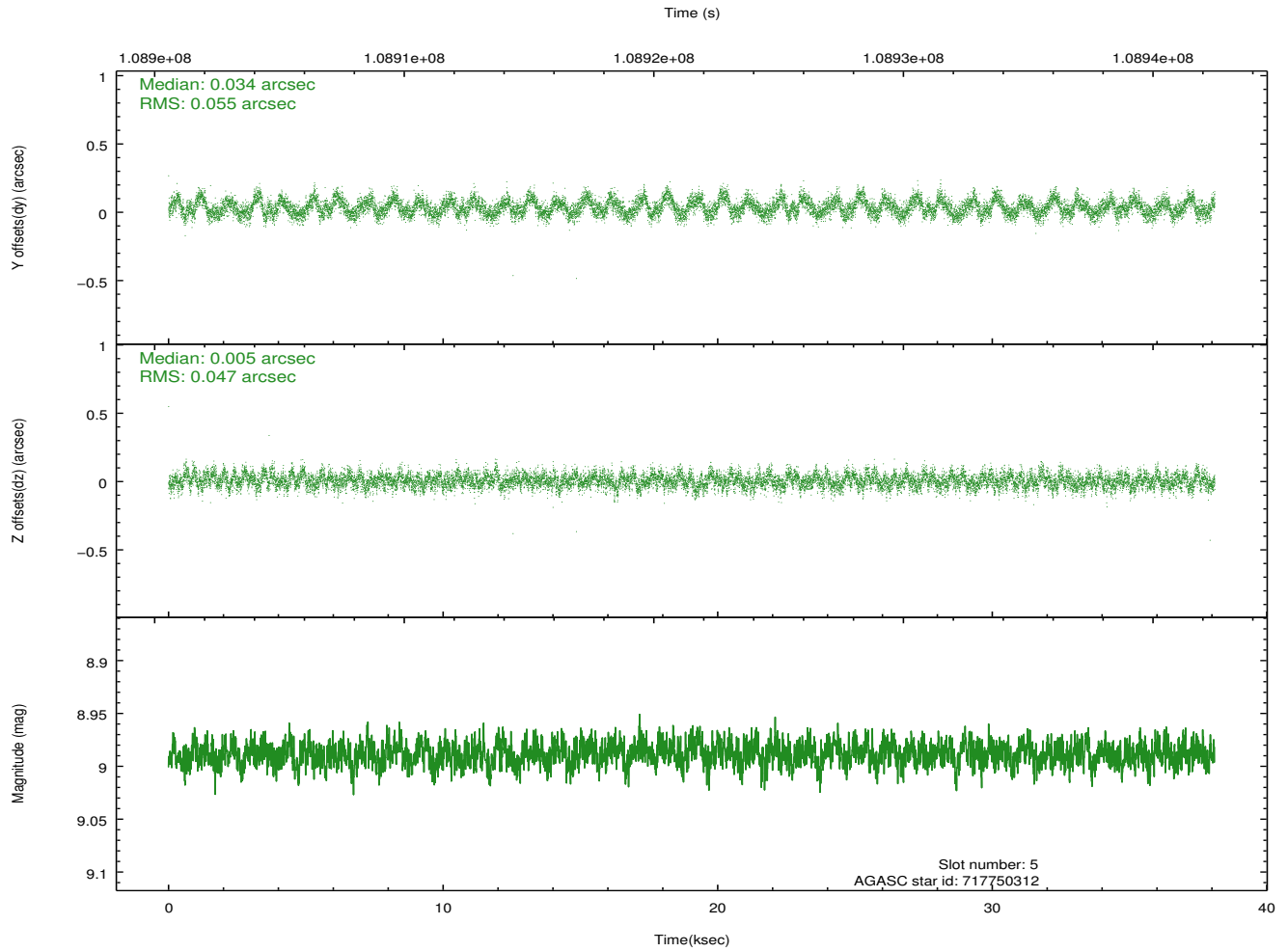
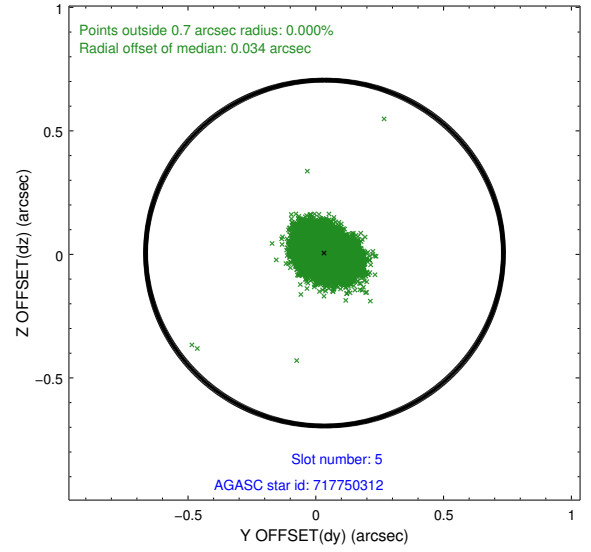
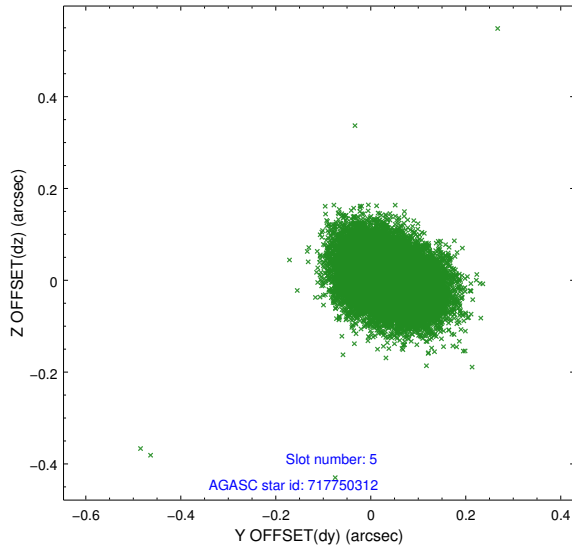
2.4.1 Slot 3



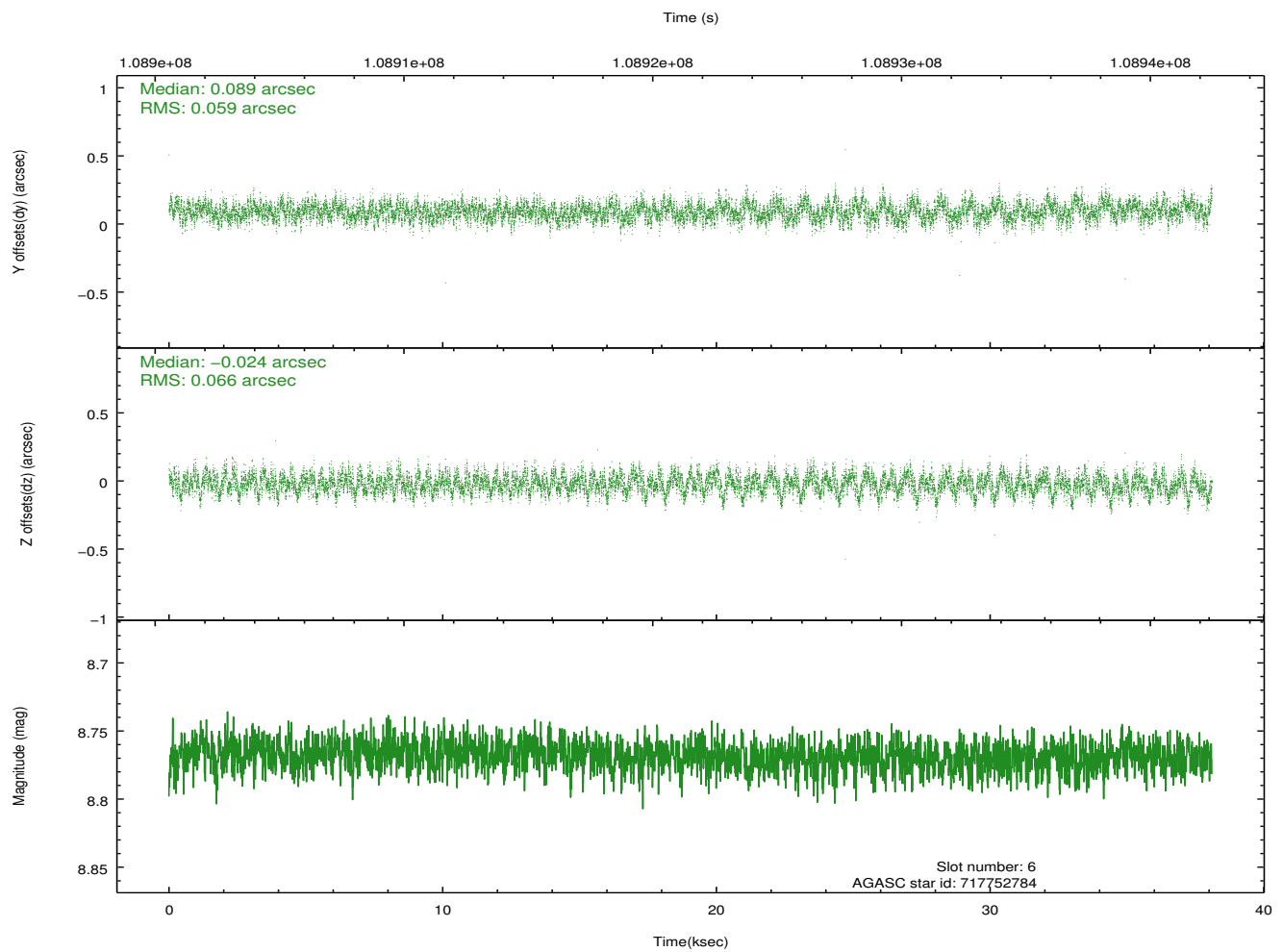
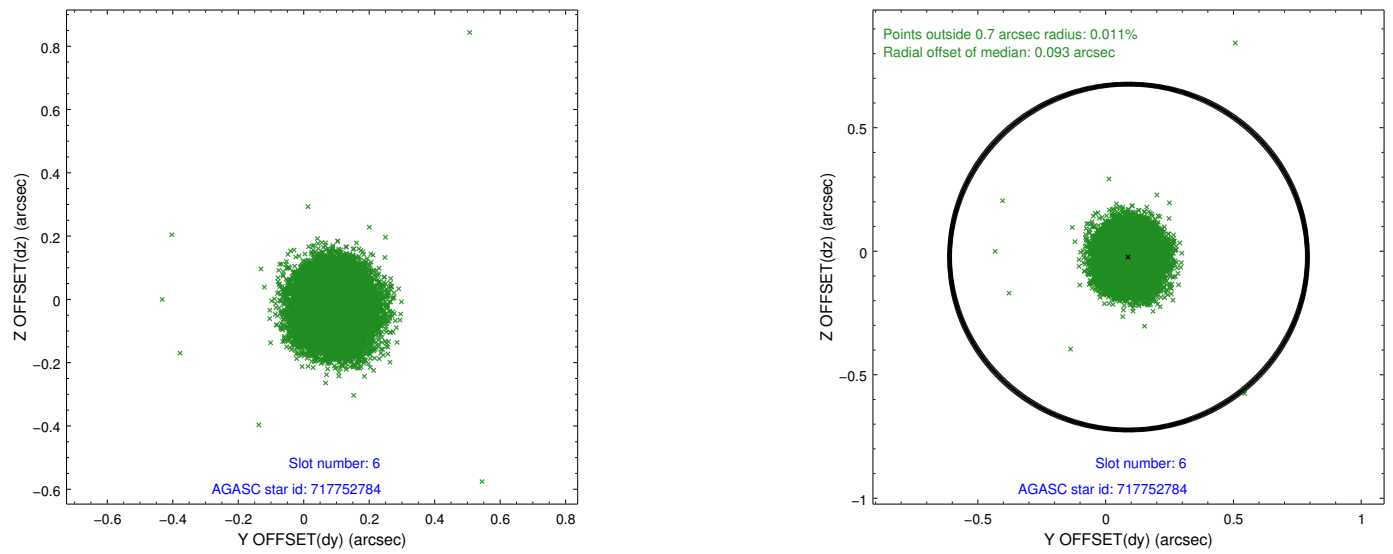
2.4.2 Slot 4



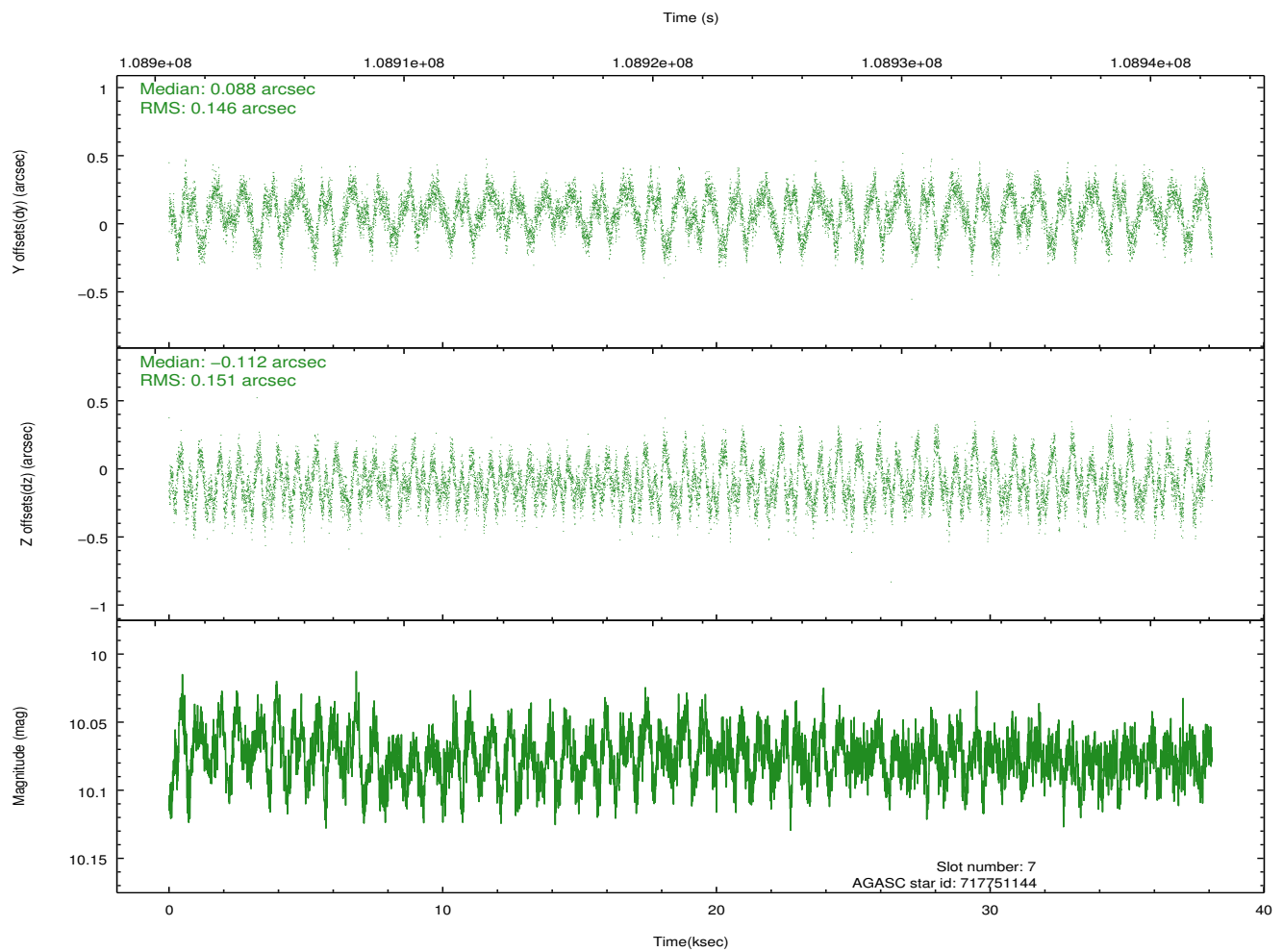
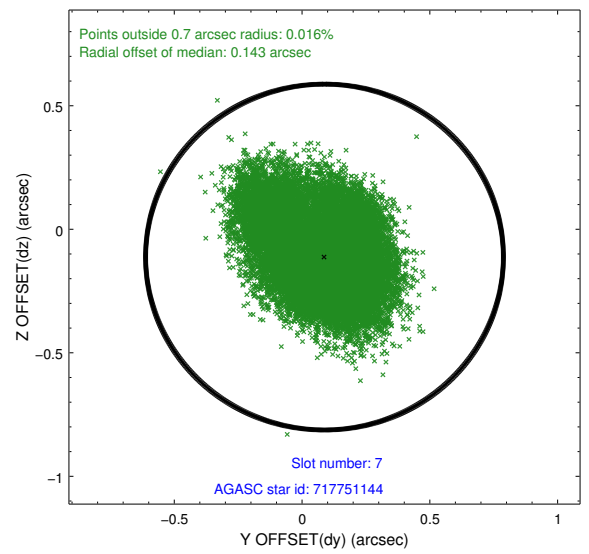
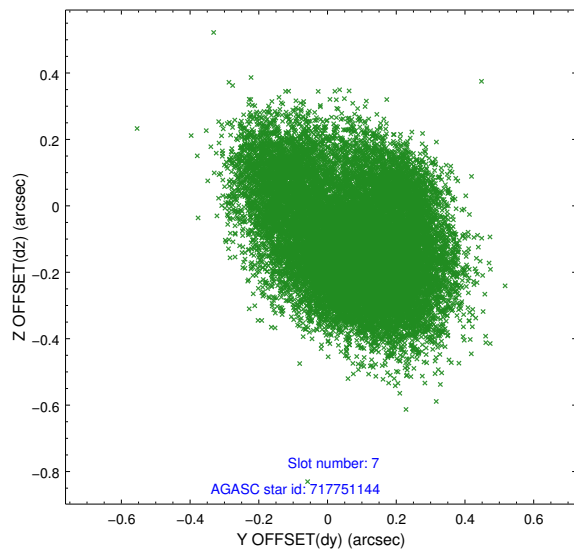
2.4.3 Slot 5



2.4.4 Slot 6

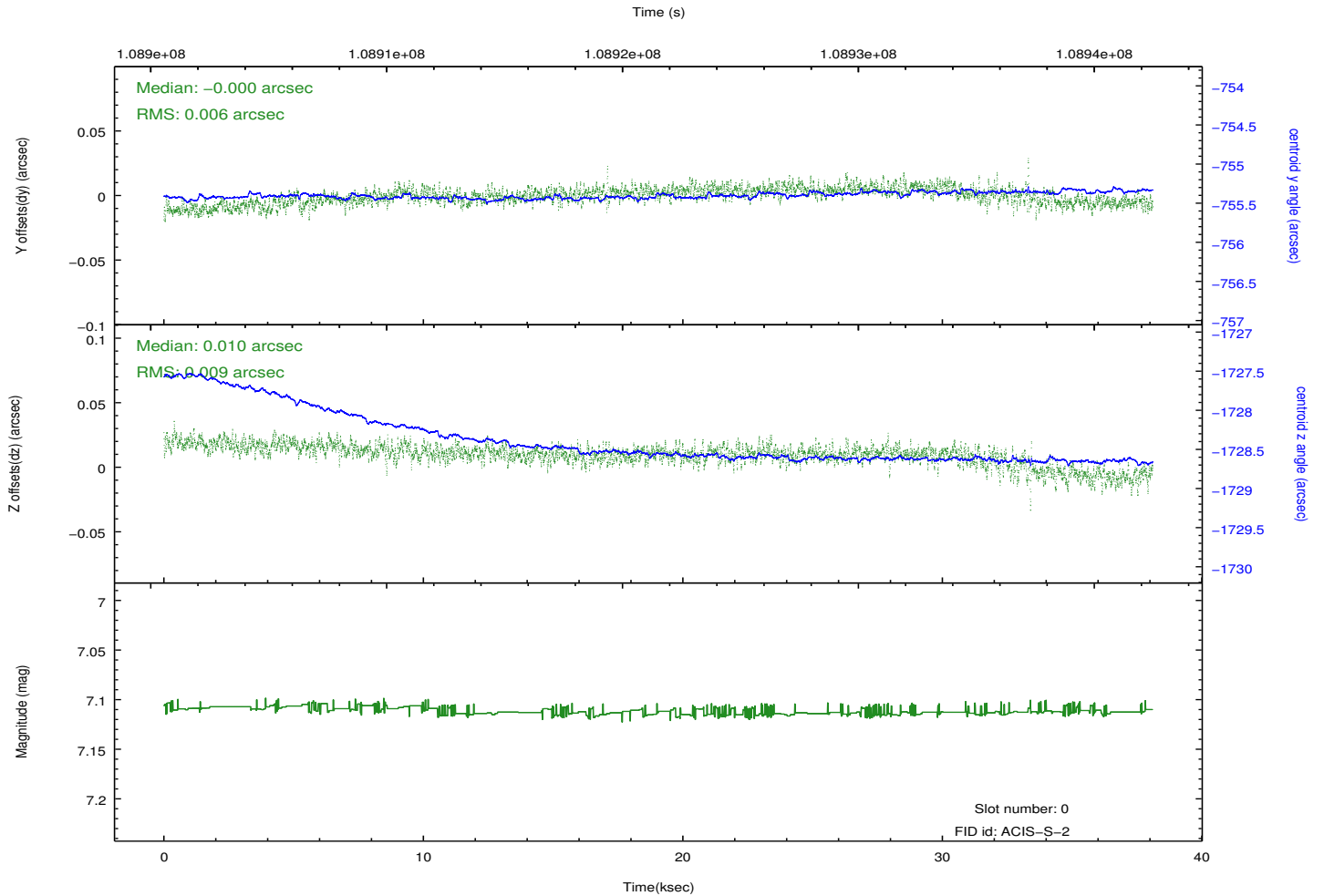
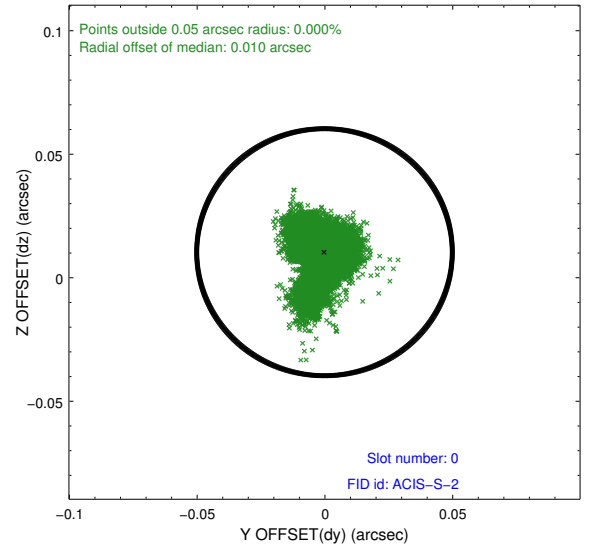
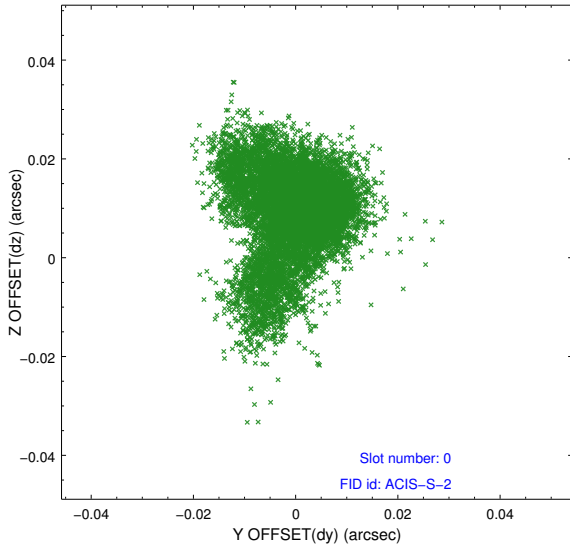


2.4.5 Slot 7

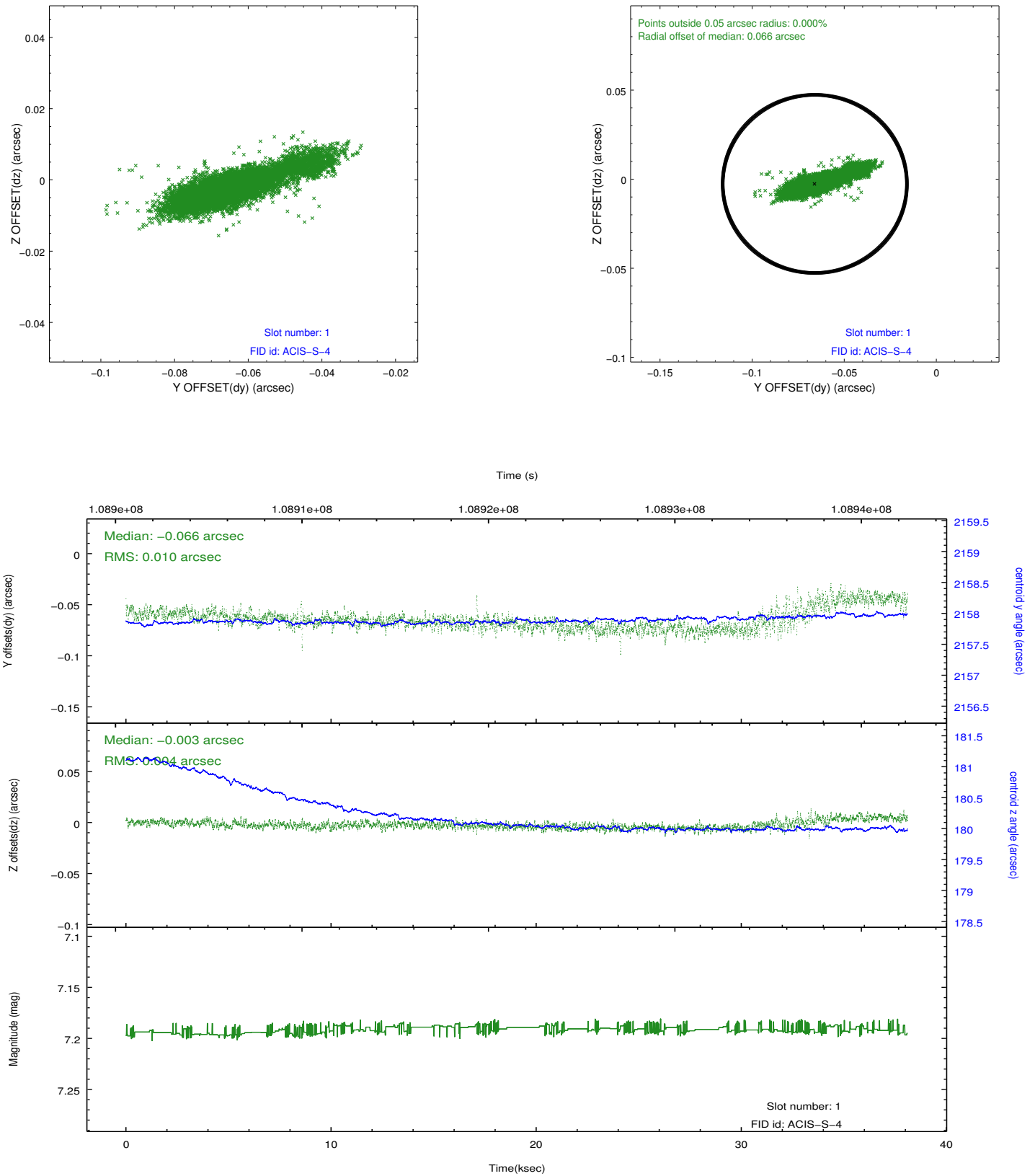


2.5 FID Slots

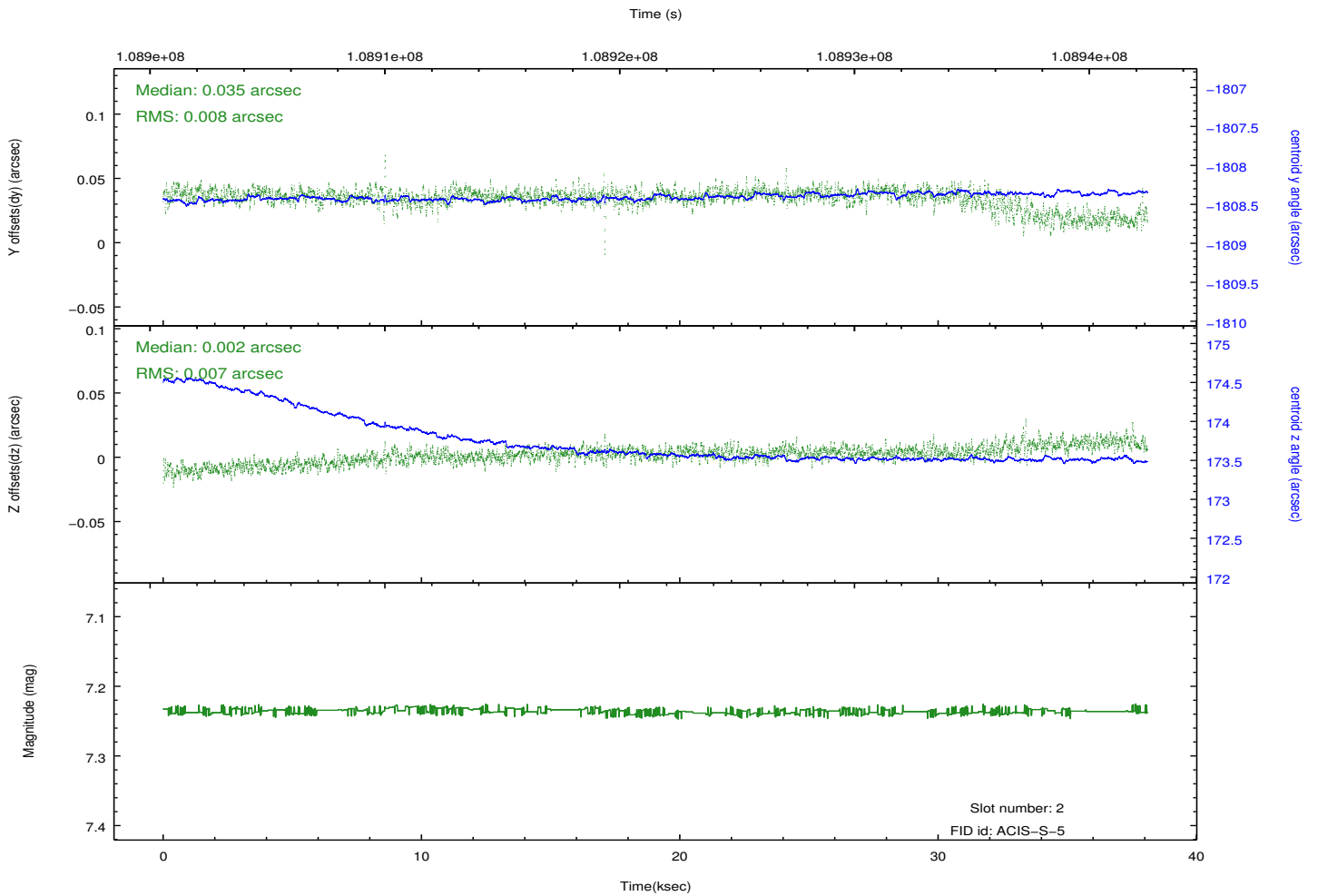
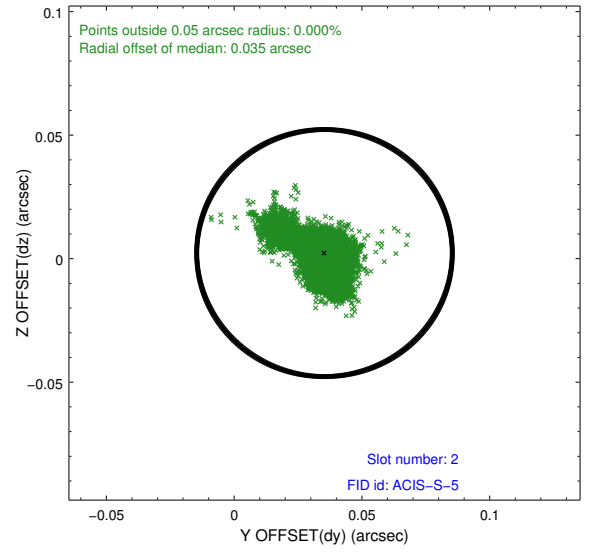
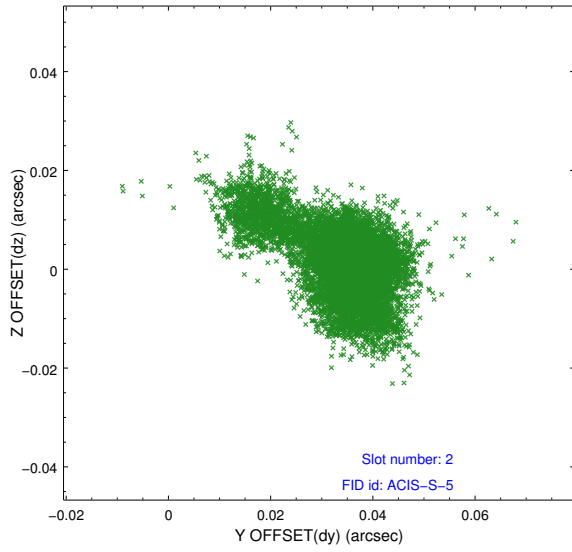
2.5.1 Slot 0



2.5.2 Slot 1



2.5.3 Slot 2



A Summary

A.1 Status

V&V Scientist	Beth Sundheim
V&V Date (YYYY-MM-DD)	2012.09.20
V&V Edition	1
V&V Disposition and Status	OK
V&V Charge Time	37.452

A.2 Comments