

V&V Reference Report

L2 ASCDS Version : 8.4.5

Observation 2240 - L2 Version 3
Chandra X-Ray Center

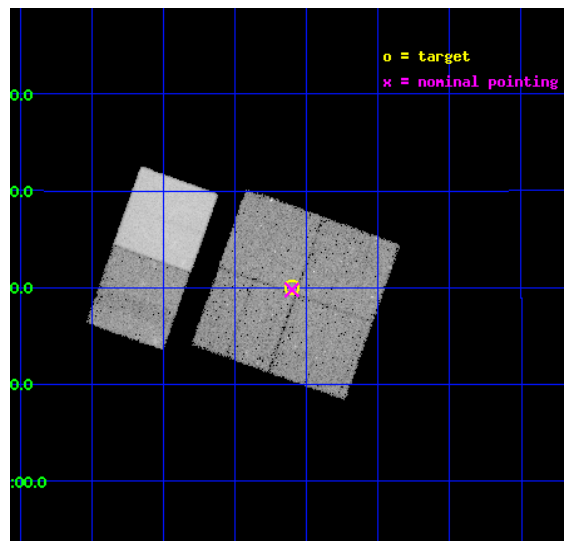
L2 Processing Date : Sep 7 2012

Contents

1	Front	2
2	OBI	3
2.1	OBI	3
2.1.1	Images	3
2.1.2	Bias	3
2.1.3	Parameters	4
2.1.4	Events	4
2.2	Compared Parameters	5
2.3	Aspect	6
2.4	Star Slots	9
2.4.1	Slot 3	9
2.4.2	Slot 4	10
2.4.3	Slot 5	11
2.4.4	Slot 6	12
2.4.5	Slot 7	13
2.5	FID Slots	14
2.5.1	Slot 0	14
2.5.2	Slot 1	15
2.5.3	Slot 2	16
A	Summary	17
A.1	Status	17
A.2	Comments	17

1 Front

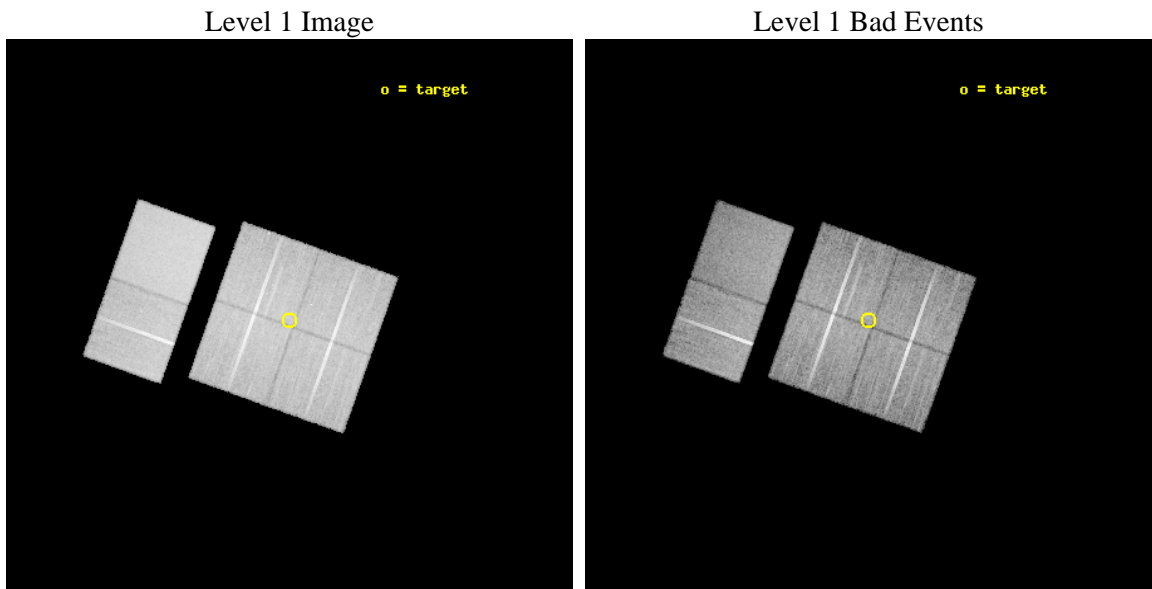
seq_num	900067	Sequence number
obs_id	2240	Observation id
title	A DEEP X-RAY SURVEY FOR ACTIVE GALACTIC NUCLEI IN THE EXTREMELY RED GALAXY POPULATION	Proposal title
observer	DR. DAVID THOMPSON	Principal investigator
object	CADIS 01H FIELD	Source name
dtcycle	0	
cycle	P	events from which exps? Prim/Second/Both
ra_targ	26.900833	Observer's specified target RA [deg]
dec_targ	2.33425	Observer's specified target Dec [deg]
ra_nom	26.900538417121	Nominal RA [deg]
dec_nom	2.3294416017302	Nominal Dec [deg]
roll_nom	289.64303455324	Nominal Roll [deg]
revision	3	Processing version of data
ontime	29939.159067646	Sum of GTIs [s]
livetime	29560.051408334	Livetime [s]
ontime0	29942.400027871	Sum of GTIs [s]
ontime1	29939.159037709	Sum of GTIs [s]
ontime2	29939.159047708	Sum of GTIs [s]
ontime3	29939.159067646	Sum of GTIs [s]
ontime6	29939.159077615	Sum of GTIs [s]
ontime7	29942.400027871	Sum of GTIs [s]
l2events	204727	Number of level 2 events



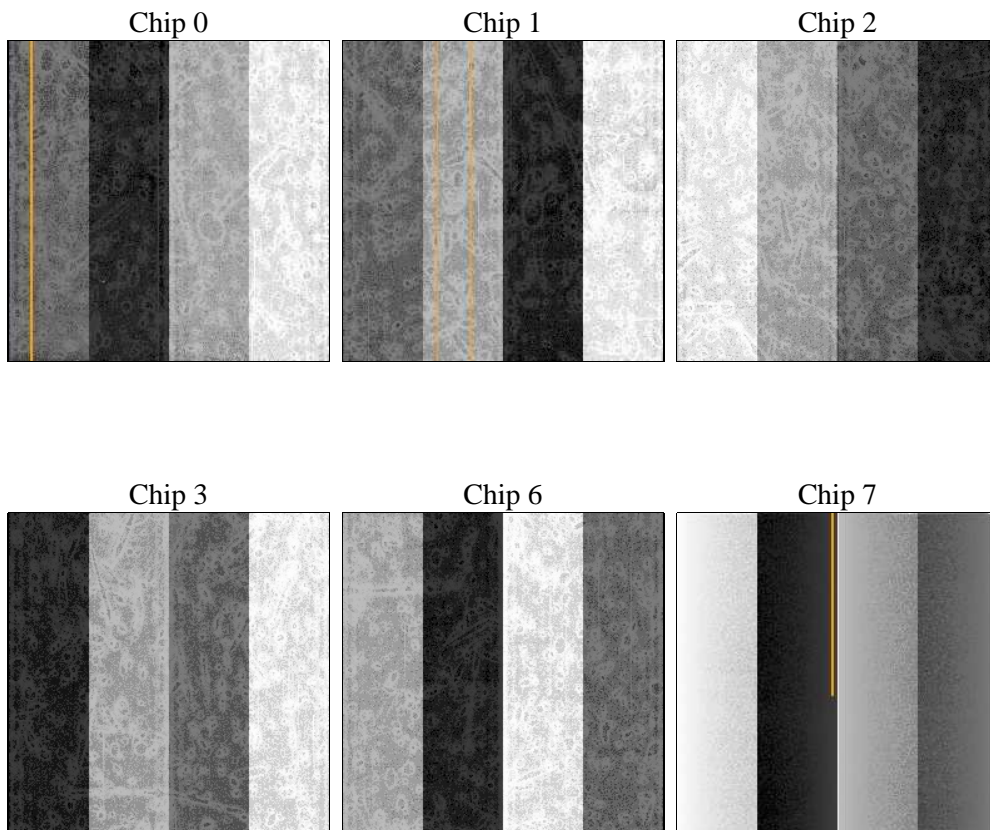
2 OBI

2.1 OBI

2.1.1 Images



2.1.2 Bias



2.1.3 Parameters

obi_num	0	Obi number	sched_exp_time	30000.000000	[s] Scheduled observation exposure time
ascdsver	8.4.5	Processing system revision	ontime	29939.159067646	Sum of GTIs [s]
caldbver	4.5.1.1	 	ontime0	29942.400027871	Sum of GTIs [s]
date	2012-09-07T04:21:06	Date and time of file creation	ontime1	29939.159037709	Sum of GTIs [s]
revision	3	Processing version of data	ontime2	29939.159047708	Sum of GTIs [s]
			ontime3	29939.159067646	Sum of GTIs [s]
			ontime6	29939.159077615	Sum of GTIs [s]
			ontime7	29942.400027871	Sum of GTIs [s]
			l1events	1094598	Number of level 1 events

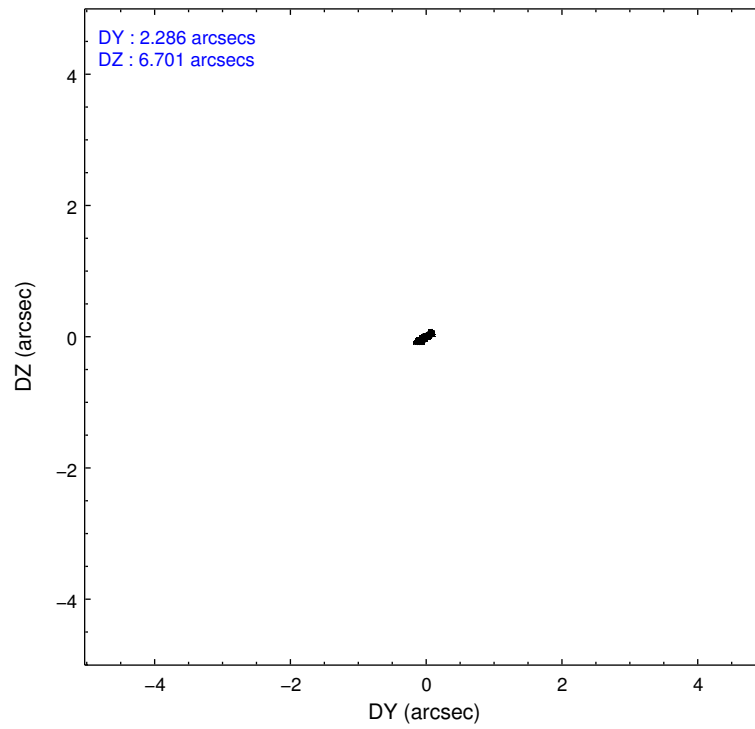
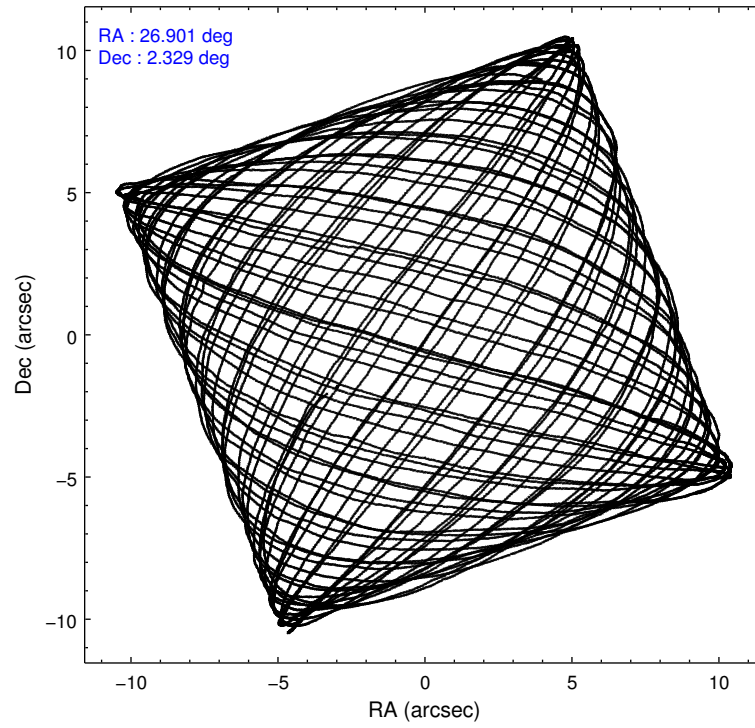
2.1.4 Events

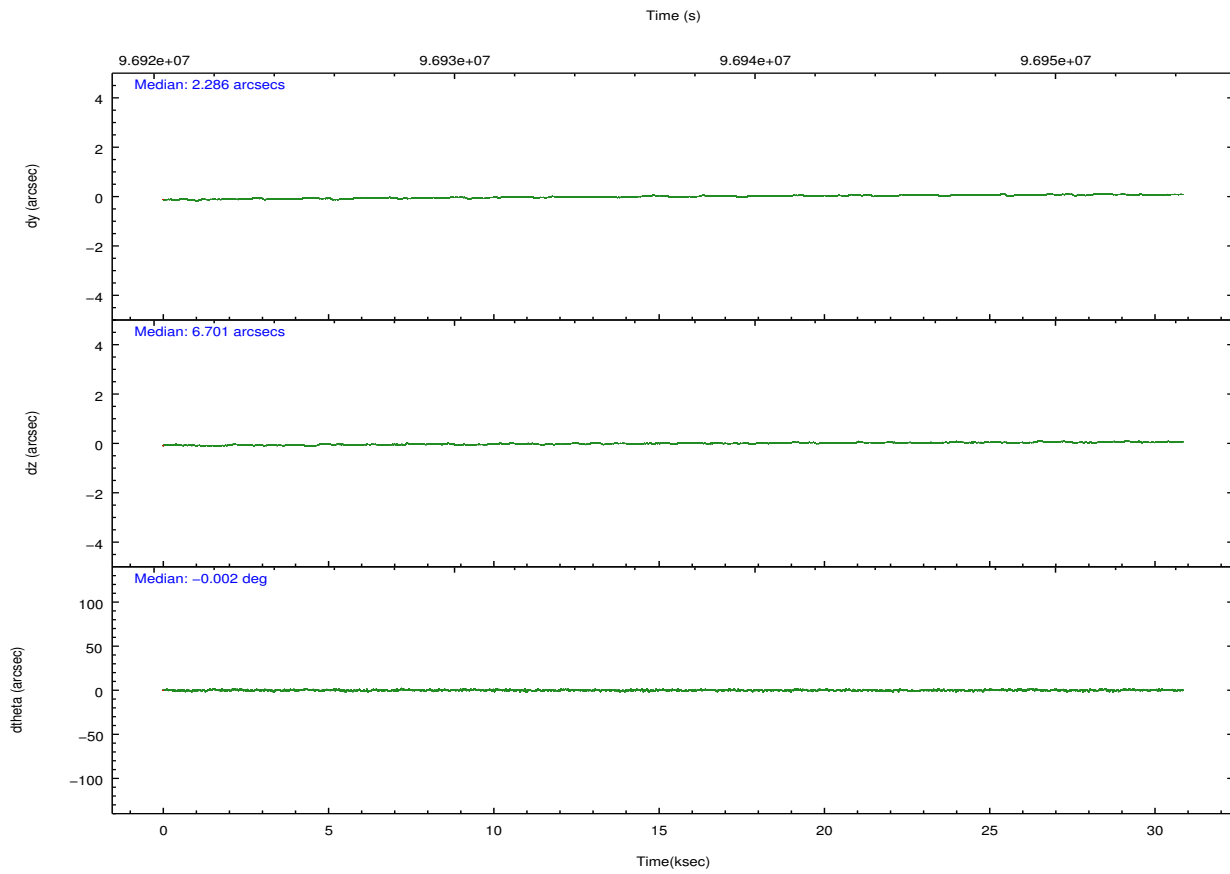
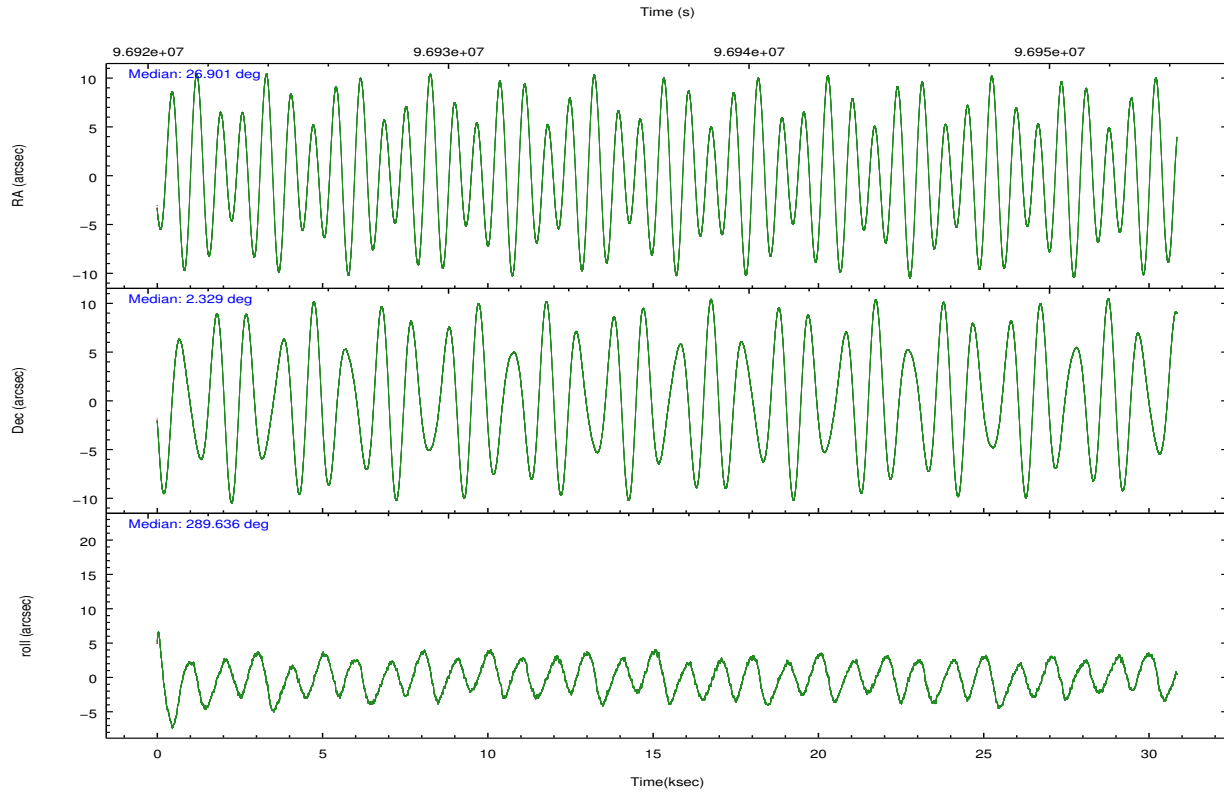
	ccd 0	ccd 1	ccd 2	ccd 3	ccd 6	ccd 7		ccd 0	ccd 1	ccd 2	ccd 3	ccd 6	ccd 7
level 1 events	161553	162020	177367	174719	181378	237561	grade 0 events	10355	10415	10179	10015	11044	10829
rejected events	138635	138176	154850	152526	157100	130214		6%	6%	5%	5%	6%	4%
rejected %	85%	85%	87%	87%	86%	54%	grade 1 events	90	84	89	79	80	212
								0%	0%	0%	0%	0%	0%
							grade 2 events	4971	4732	4759	4490	4796	20532
								3%	2%	2%	2%	2%	8%
							grade 3 events	1994	2218	1901	1932	2059	9606
								1%	1%	1%	1%	1%	4%
							grade 4 events	1803	2244	1989	1963	2074	9477
								1%	1%	1%	1%	1%	3%
							grade 5 events	6093	6573	5729	6777	7420	21298
								3%	4%	3%	3%	4%	8%
							grade 6 events	3799	4238	3690	3794	4306	56912
								2%	2%	2%	2%	2%	23%
							grade 7 events	132448	131516	149031	145669	149599	108695
								81%	81%	84%	83%	82%	45%

2.2 Compared Parameters

Parameter	Planned	Actual	Parameter	Planned	Actual
Instrument	ACIS	ACIS	Obspar format version number	7	7
Detector	ACIS-012367	ACIS-012367	Obspar file type	PREDICTED	ACTUAL
Grating	NONE	NONE	Obspar update status	NONE	UPDATED
Data mode	VFAINT	VFAINT	Number of optional ACIS chips dropped	0	0
Observation mode	POINTING	POINTING	On-chip summing requested	N	N
[deg] Pointing RA	26.879611	26.90053841712059	Subarray requested	NONE	NONE
[deg] Pointing Dec	2.347267	2.329441601730165	Alternating exposures requested	N	N
[deg] Pointing Roll	289.435206	289.6430345532358	[s] Primary exposure time	0.000000	3.2
[mm] SIM focus pos	-0.782348	-0.7809083437167272			
[mm] SIM defocus	0	0.001439871863259334			
[mm] SIM translation stage pos	-233.592463	-233.5874344608287			
[mm] SIM translation stage offset	0	-0.005018542100998502			
[s] Observation start time (MET)	96922693.184000	96921407.03677399			
Observation start date	2001-01-26T18:57:09	2001-01-26T18:36:47			
[s] Observation end time (MET)	96952693.184000	96953283.00049999			
Observation end date	2001-01-27T03:17:09	2001-01-27T03:28:03			
Read mode	TIMED	TIMED			

2.3 Aspect



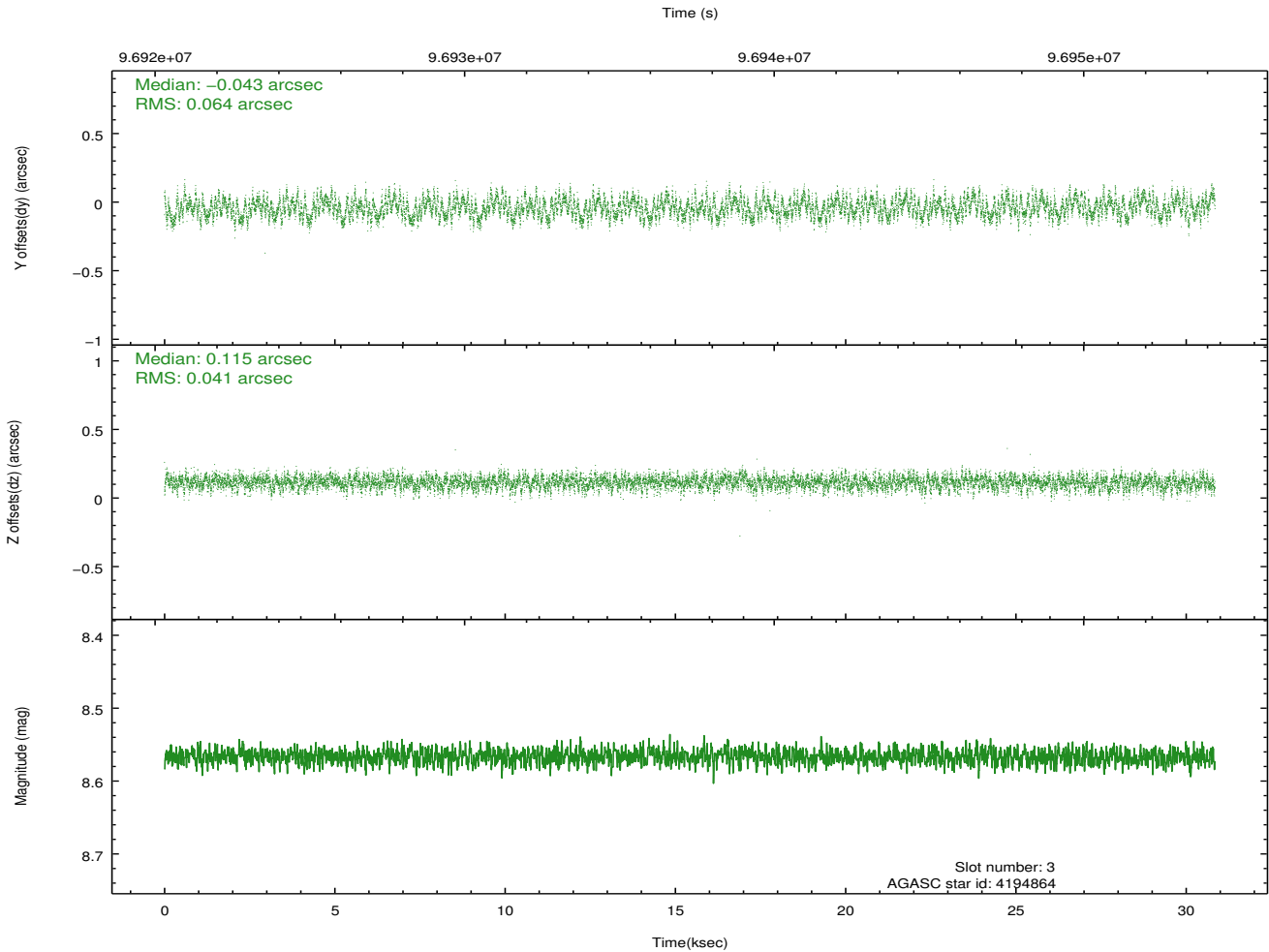
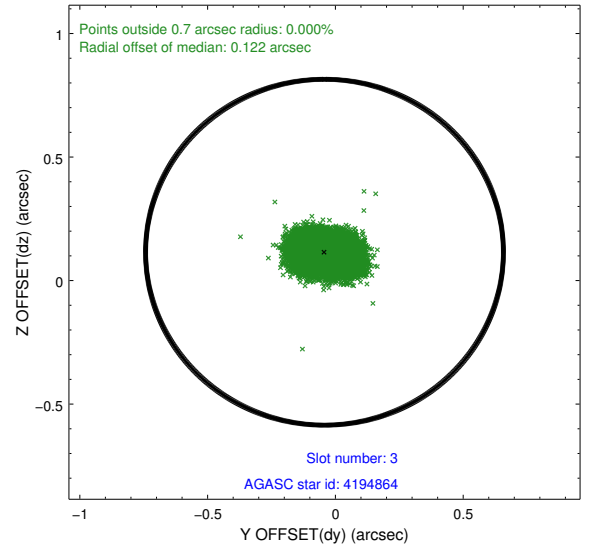
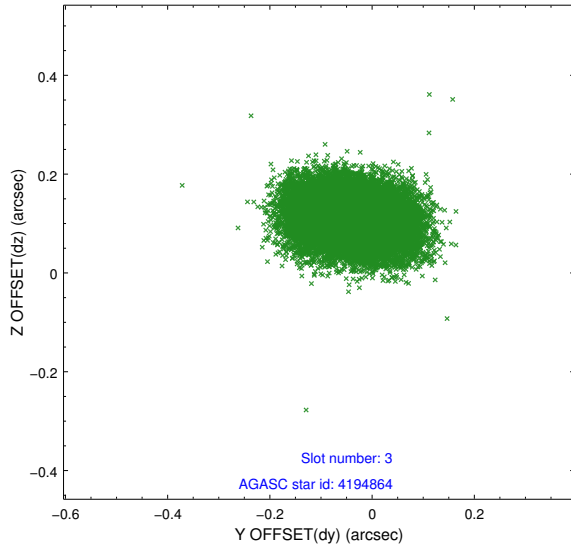


Slot Statistics

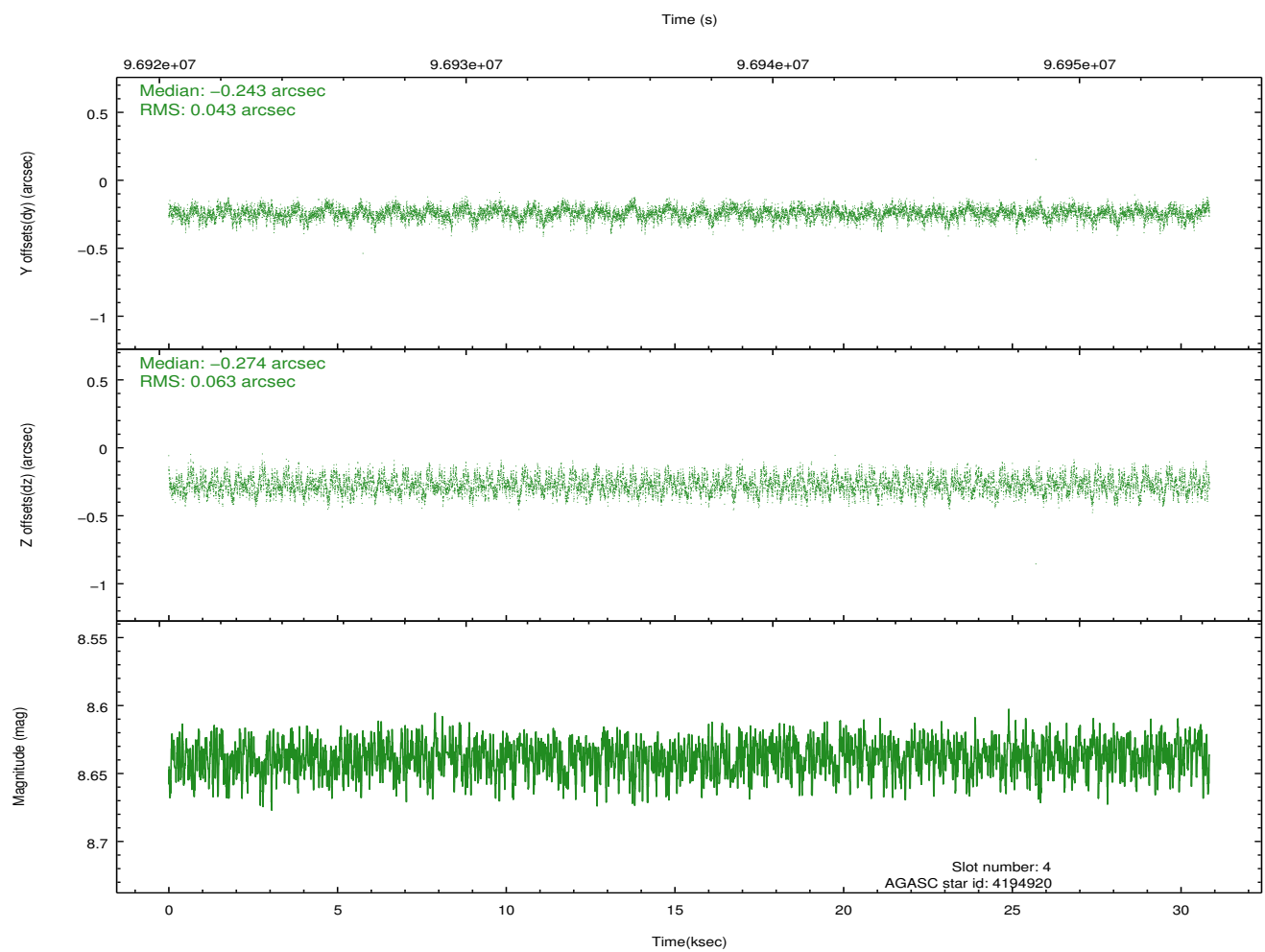
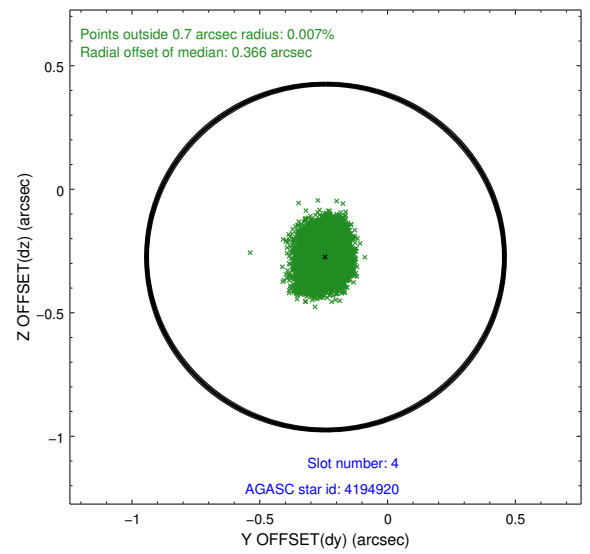
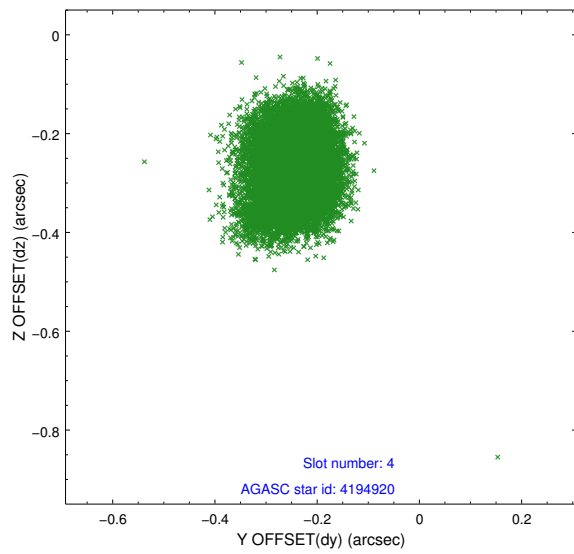
slot	status	id	mag	n_pts	med_dy	med_dz	dr1	dr2	ra	dec	mean_y	mean_z
0	FID	ACIS-I-2	7.15	7523	-0.034	-0.059	0.011	0.019	0.000000	0.000000	-756.68	-836.50
1	FID	ACIS-I-4	7.18	7524	-0.039	0.044	0.009	0.015	0.000000	0.000000	2157.35	1069.74
2	FID	ACIS-I-5	7.23	7525	-0.028	0.085	0.011	0.018	0.000000	0.000000	-1810.41	1067.71
3	GUIDE	4194864	8.57	15040	-0.043	0.115	0.081	0.130	27.061604	2.711355	-1019.00	1052.82
4	GUIDE	4194920	8.64	15046	-0.243	-0.274	0.082	0.131	26.080477	2.615510	-1868.37	-2389.63
5	GUIDE	4196136	9.30	15038	-0.052	0.062	0.082	0.132	27.411697	2.640748	-360.99	2155.49
6	GUIDE	4328000	9.51	15044	0.038	0.081	0.124	0.193	27.508833	2.521595	159.89	2342.74
7	GUIDE	3802016	9.53	15044	0.297	0.017	0.096	0.155	26.888447	1.995804	1203.59	-391.27

2.4 Star Slots

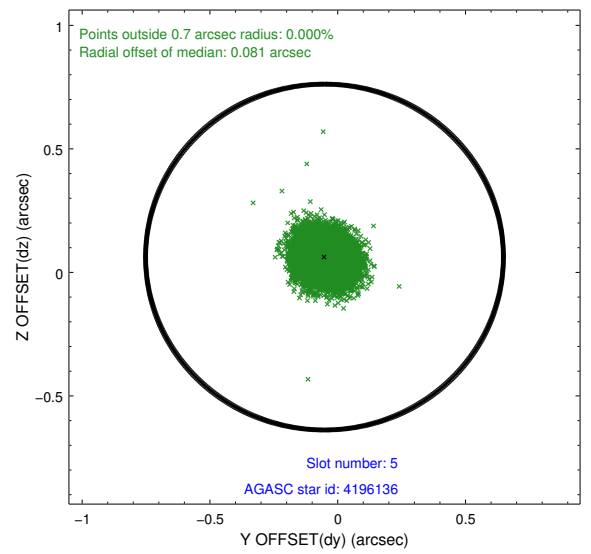
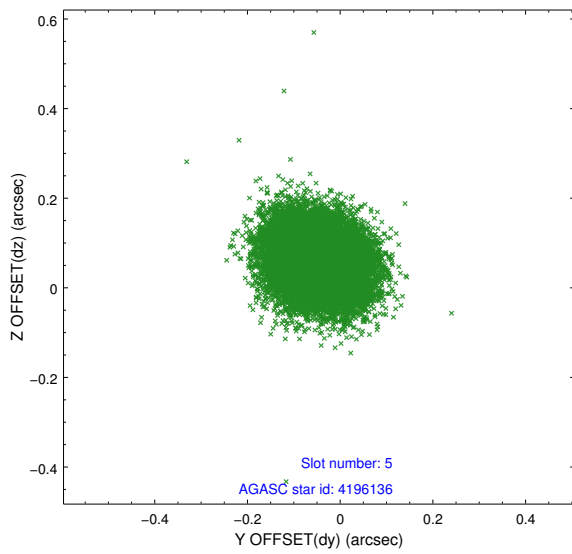
2.4.1 Slot 3



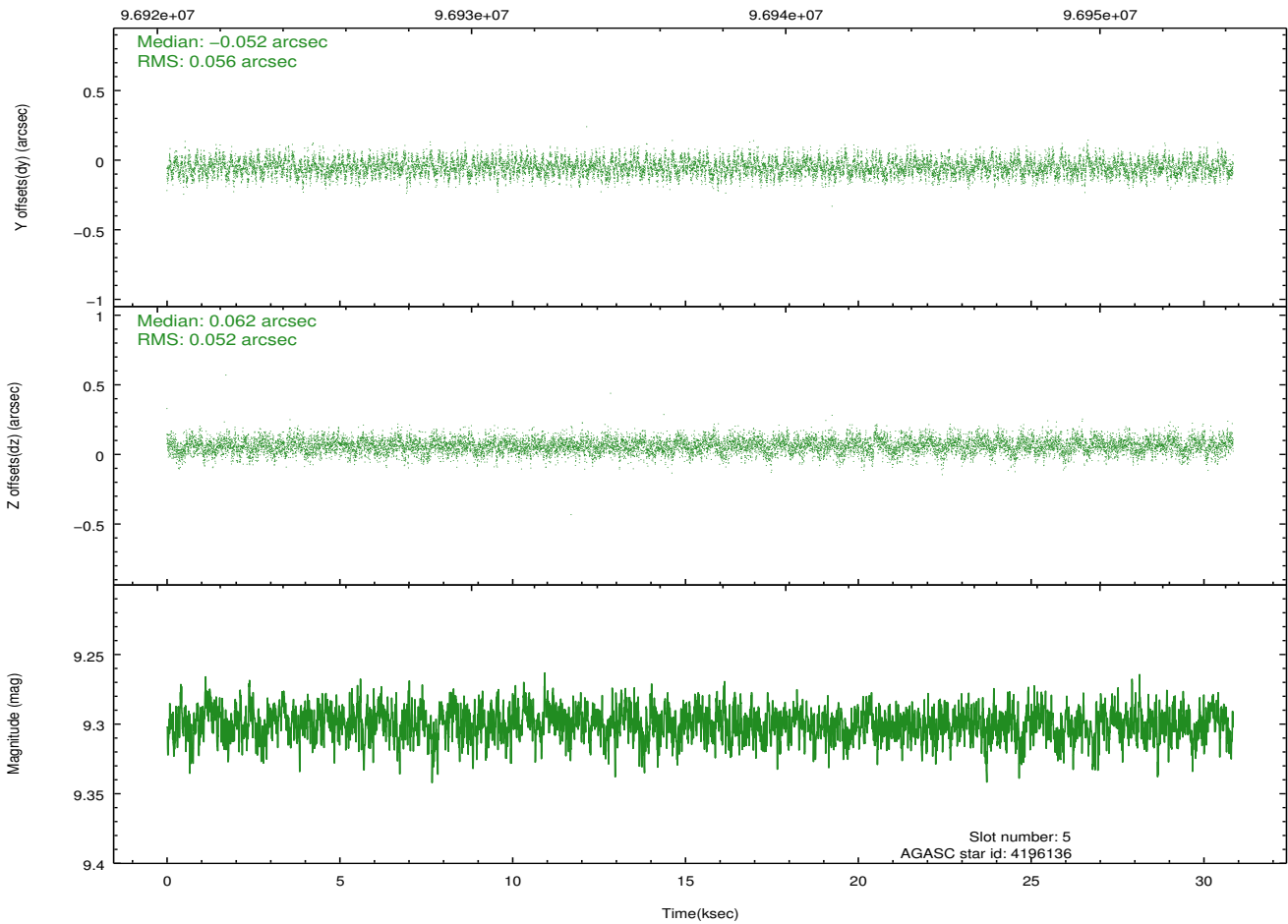
2.4.2 Slot 4



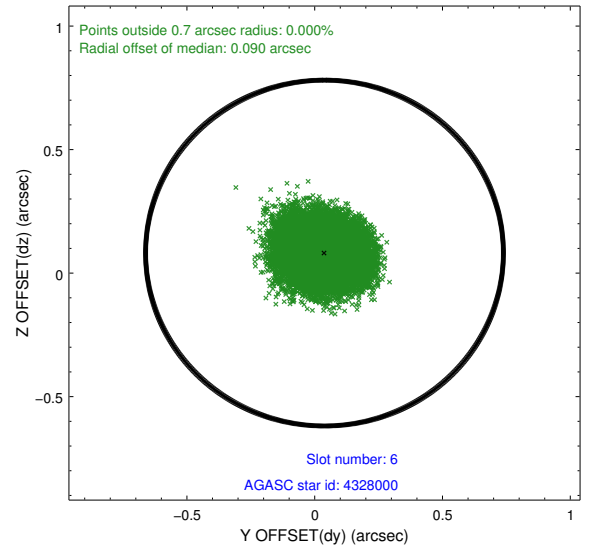
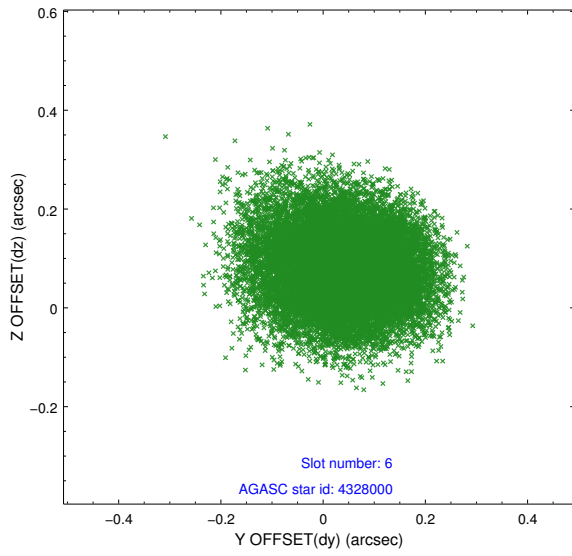
2.4.3 Slot 5



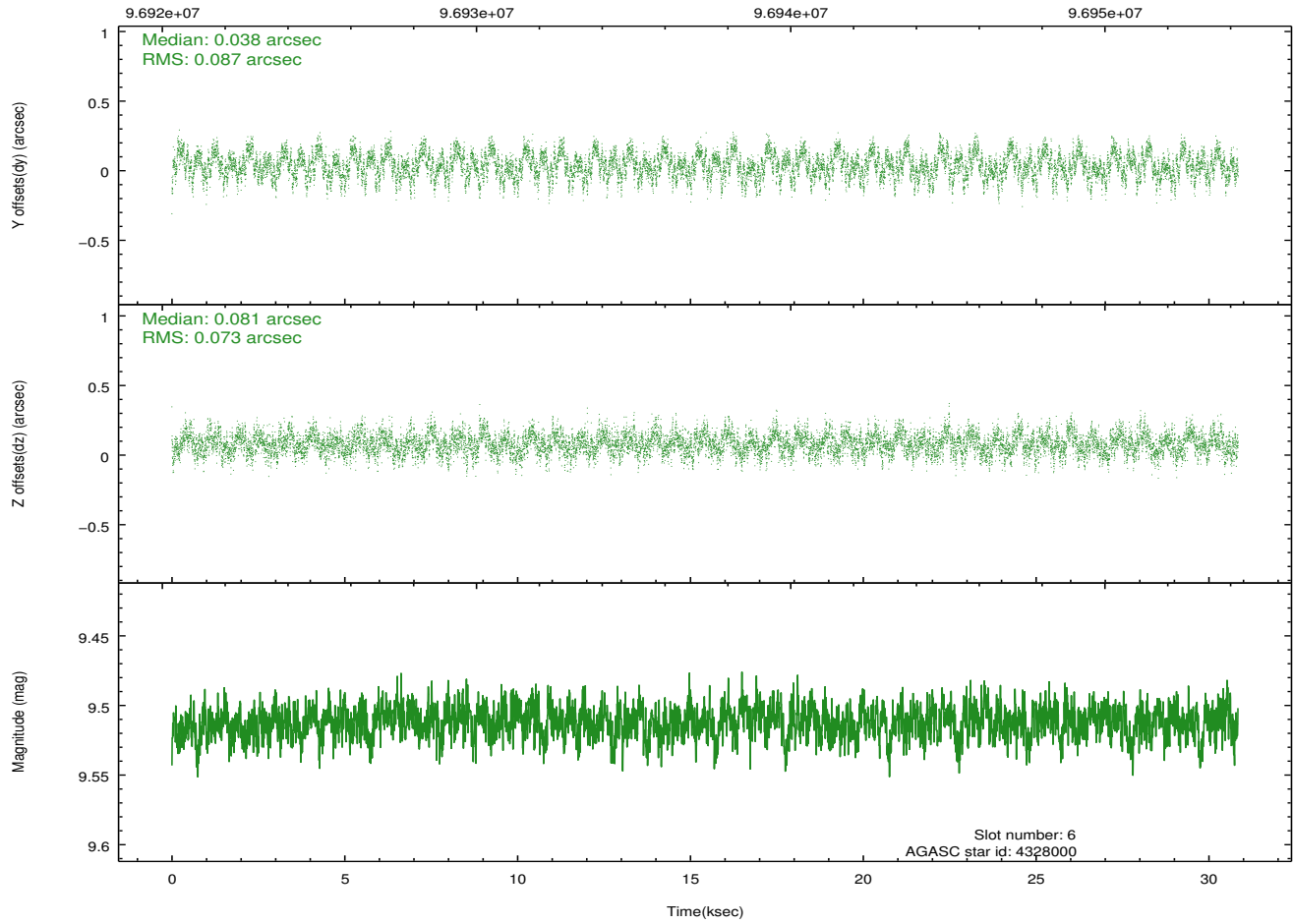
Time (s)



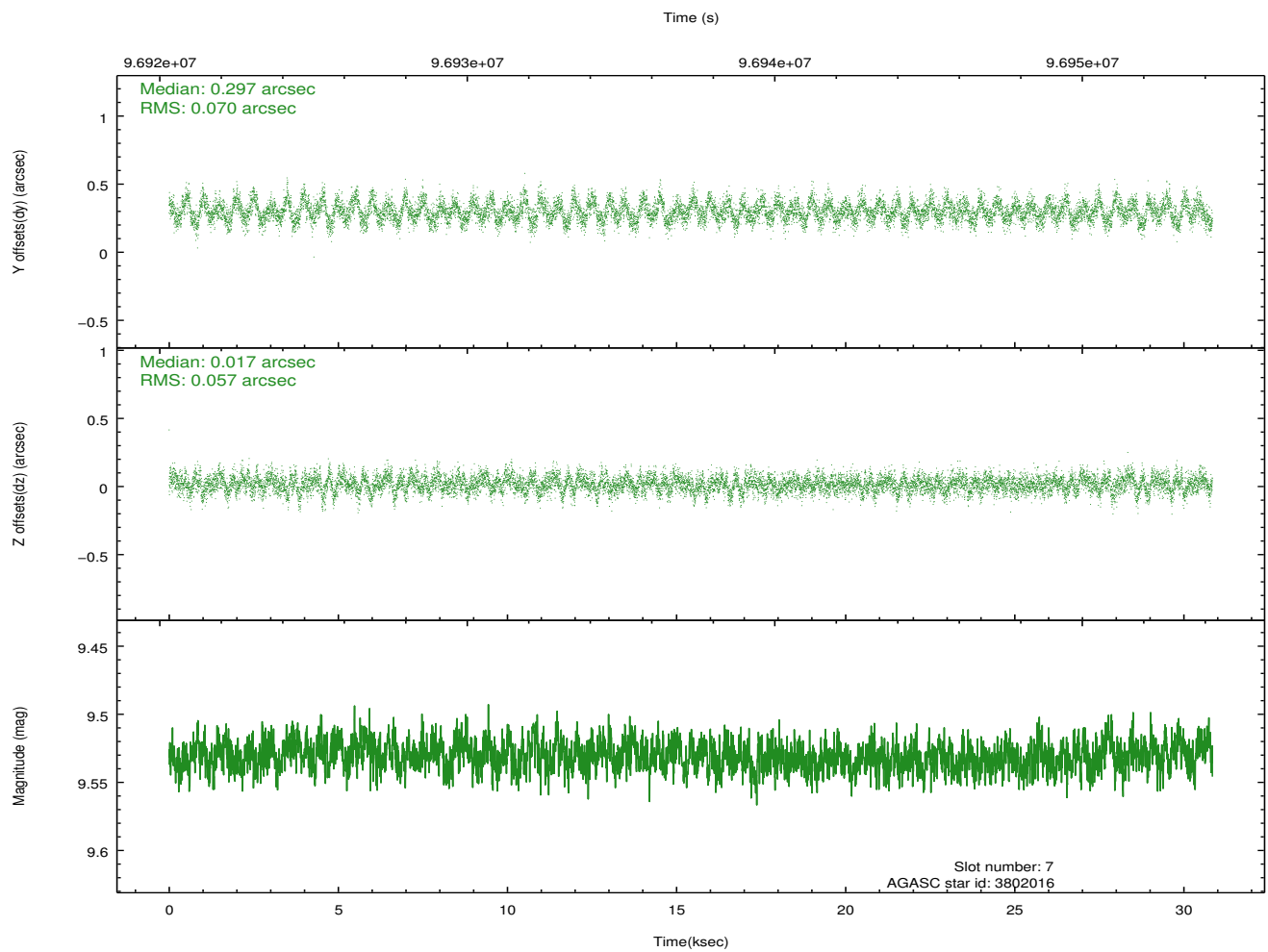
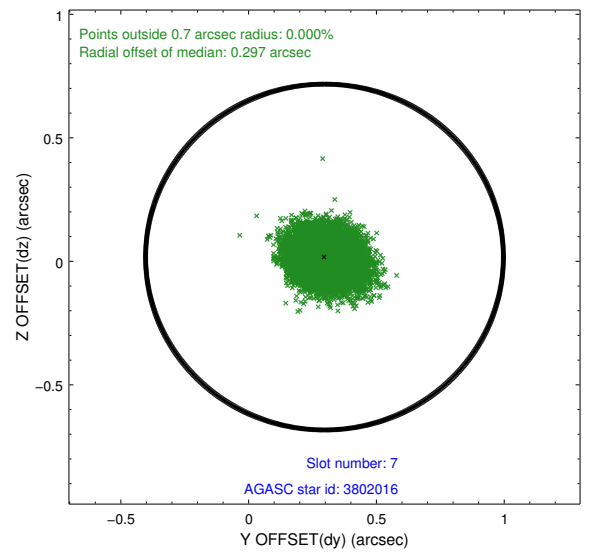
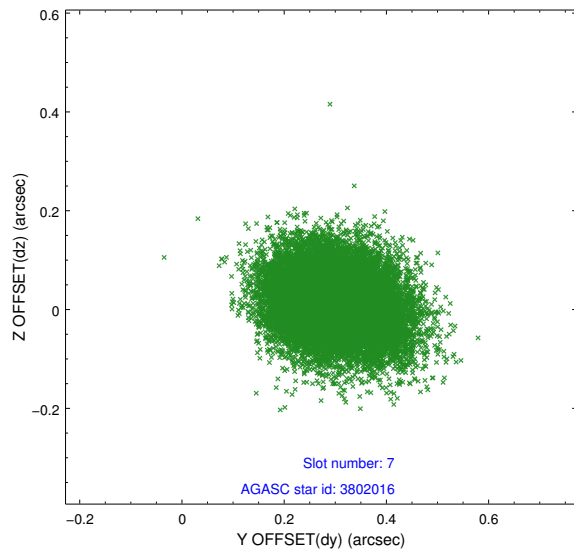
2.4.4 Slot 6



Time (s)

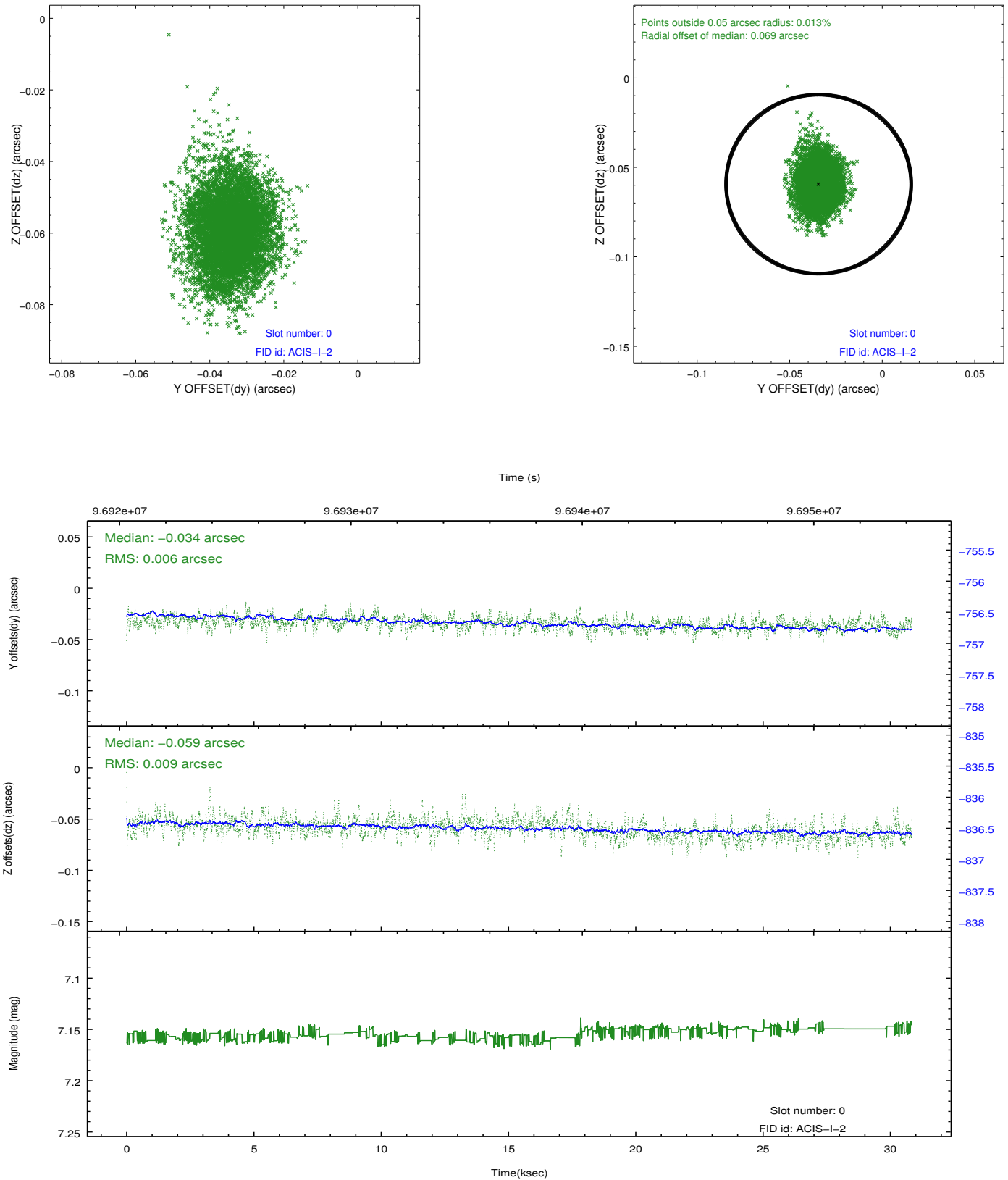


2.4.5 Slot 7

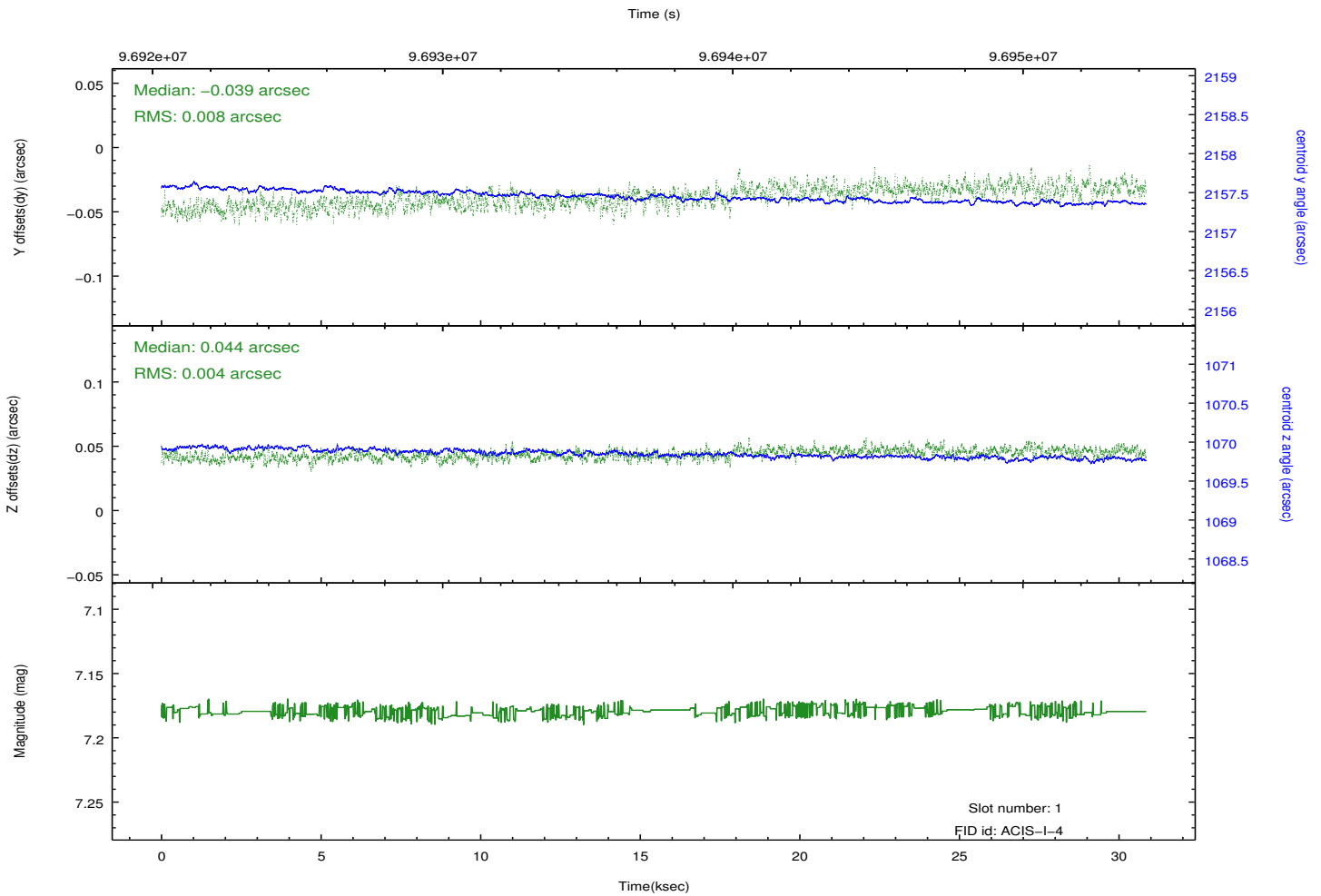
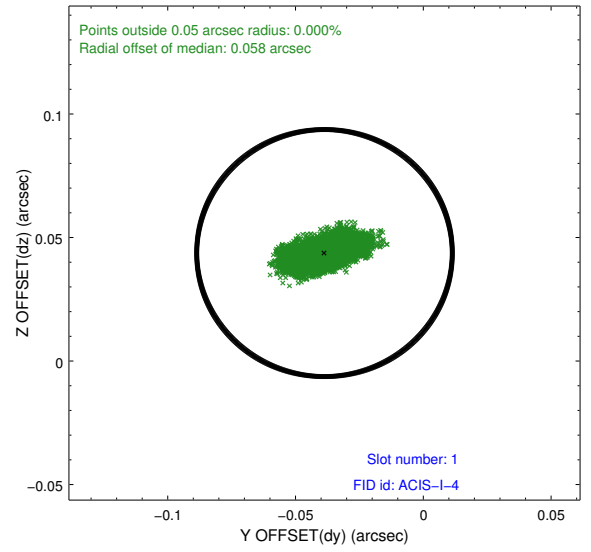
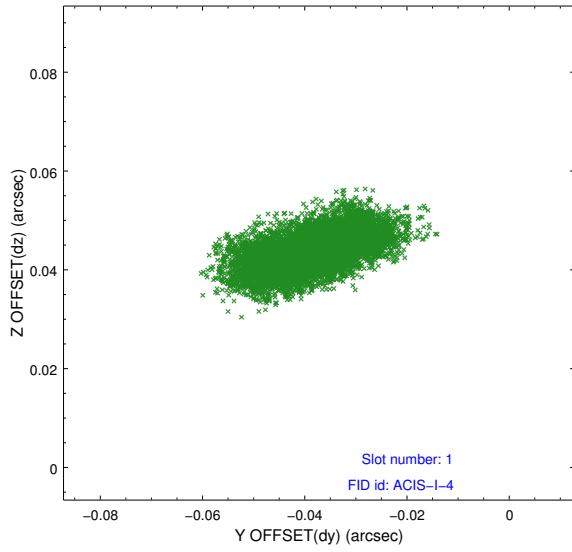


2.5 FID Slots

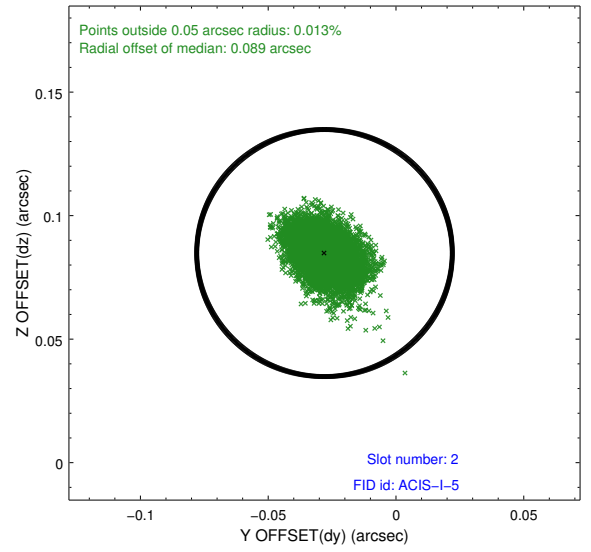
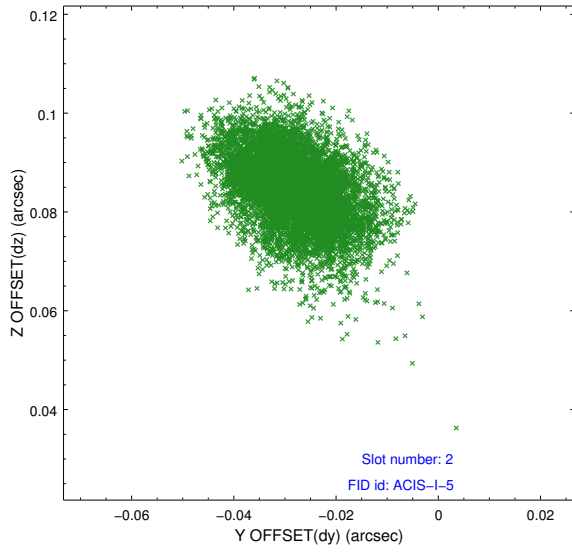
2.5.1 Slot 0



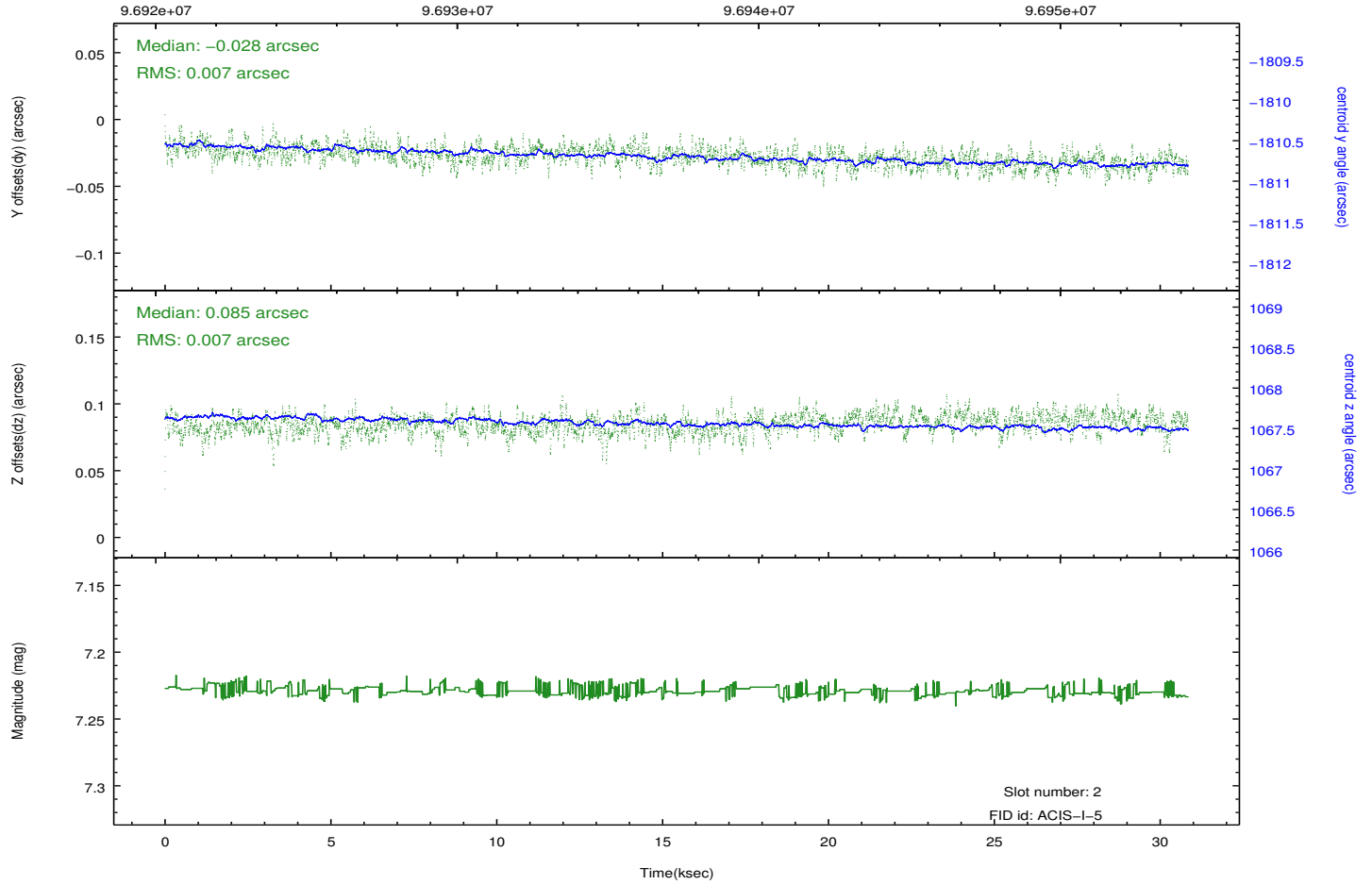
2.5.2 Slot 1



2.5.3 Slot 2



Time (s)



A Summary

A.1 Status

V&V Scientist	Jen Lauer
V&V Date (YYYY-MM-DD)	2012.09.17
V&V Edition	1
V&V Disposition and Status	OK
V&V Charge Time	29.942

A.2 Comments