

V&V Reference Report

L2 ASCDS Version : 8.4.5

Observation 2760 - L2 Version 3
Chandra X-Ray Center

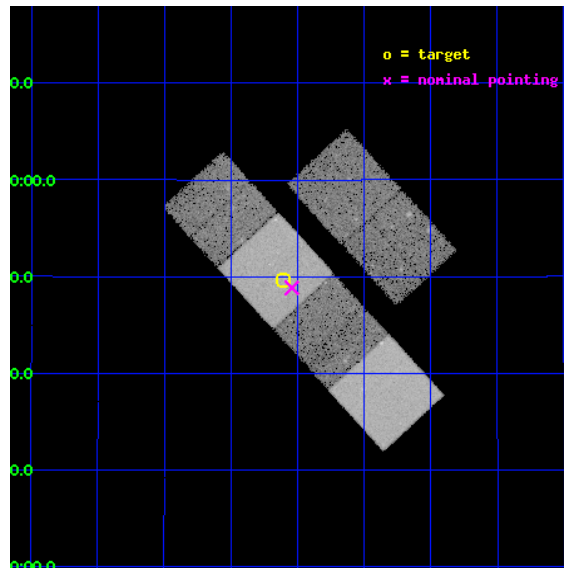
L2 Processing Date : Oct 4 2012

Contents

1	Front	2
2	OBI	3
2.1	OBI	3
2.1.1	Images	3
2.1.2	Bias	3
2.1.3	Parameters	4
2.1.4	Events	4
2.2	Compared Parameters	5
2.3	Aspect	6
2.4	Star Slots	9
2.4.1	Slot 3	9
2.4.2	Slot 4	10
2.4.3	Slot 5	11
2.4.4	Slot 6	12
2.4.5	Slot 7	13
2.5	FID Slots	14
2.5.1	Slot 0	14
2.5.2	Slot 1	15
2.5.3	Slot 2	16
A	Summary	17
A.1	Status	17
A.2	Comments	17

1 Front

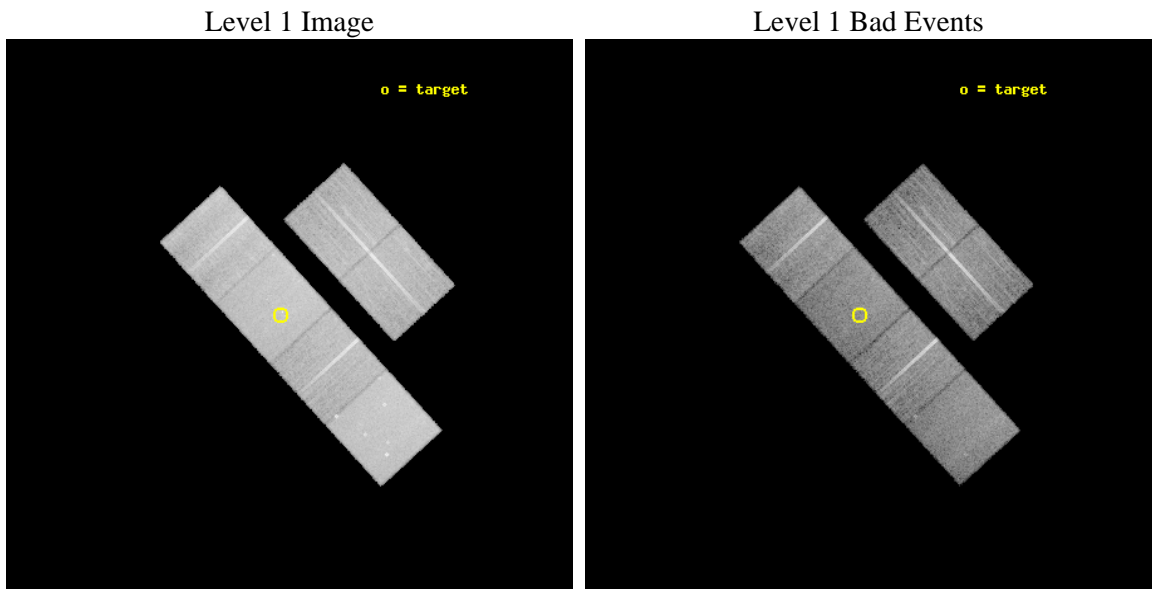
seq_num	500210	Sequence number
obs_id	2760	Observation id
title	CHANDRA TOO OBSERVATIONS OF TYPE IA SUPERNOVAE	Proposal title
observer	Prof. John Hughes	Principal investigator
object	SN2002BO	Source name
dtycycle	0	
cycle	P	events from which exps? Prim/Second/Both
ra_targ	154.527083	Observer's specified target RA [deg]
dec_targ	21.82825	Observer's specified target Dec [deg]
ra_nom	154.51059586831	Nominal RA [deg]
dec_nom	21.814156403916	Nominal Dec [deg]
roll_nom	227.45511113697	Nominal Roll [deg]
revision	3	Processing version of data
ontime	20064.000018671	Sum of GTIs [s]
livetime	19809.937569344	Livetime [s]
ontime2	20064.000018671	Sum of GTIs [s]
ontime3	20060.758998588	Sum of GTIs [s]
ontime5	20064.000018671	Sum of GTIs [s]
ontime6	20060.759038419	Sum of GTIs [s]
ontime7	20064.000018671	Sum of GTIs [s]
ontime8	20057.518187746	Sum of GTIs [s]
l2events	208715	Number of level 2 events



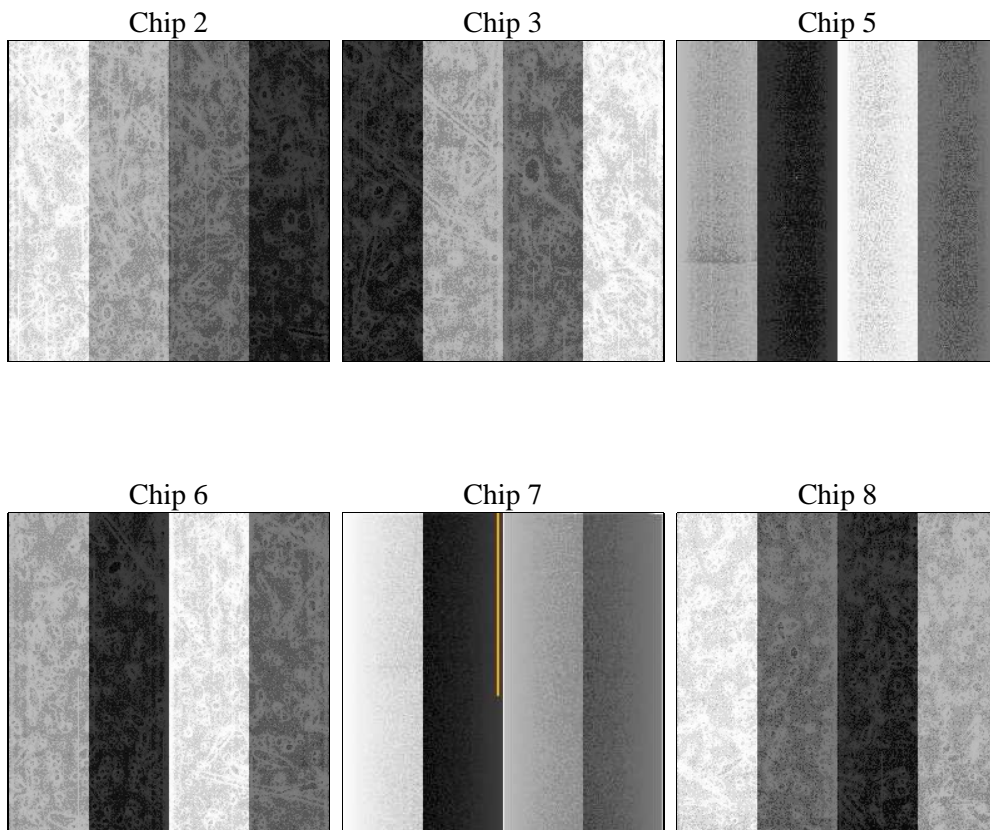
2 OBI

2.1 OBI

2.1.1 Images



2.1.2 Bias



2.1.3 Parameters

obi_num	0	Obi number	sched_exp_time	20313.903000	[s] Scheduled observation exposure time
ascdsver	8.4.5	Processing system revision	ontime	20064.000018671	Sum of GTIs [s]
caldsver	4.5.2	 	ontime2	20064.000018671	Sum of GTIs [s]
date	2012-10-04T11:33:13	Date and time of file creation	ontime3	20060.758998588	Sum of GTIs [s]
revision	3	Processing version of data	ontime5	20064.000018671	Sum of GTIs [s]
			ontime6	20060.759038419	Sum of GTIs [s]
			ontime7	20064.000018671	Sum of GTIs [s]
			ontime8	20057.518187746	Sum of GTIs [s]
			l1events	937367	Number of level 1 events

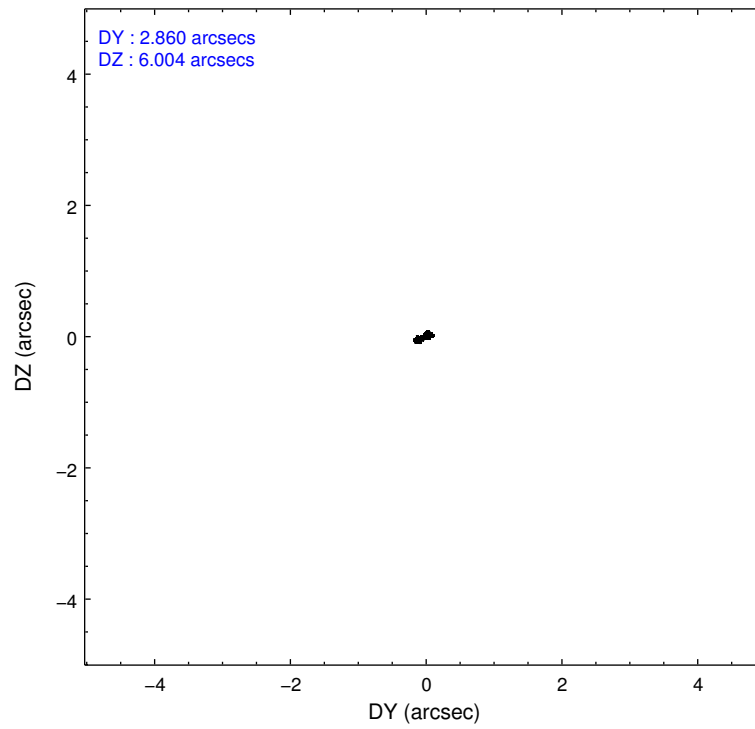
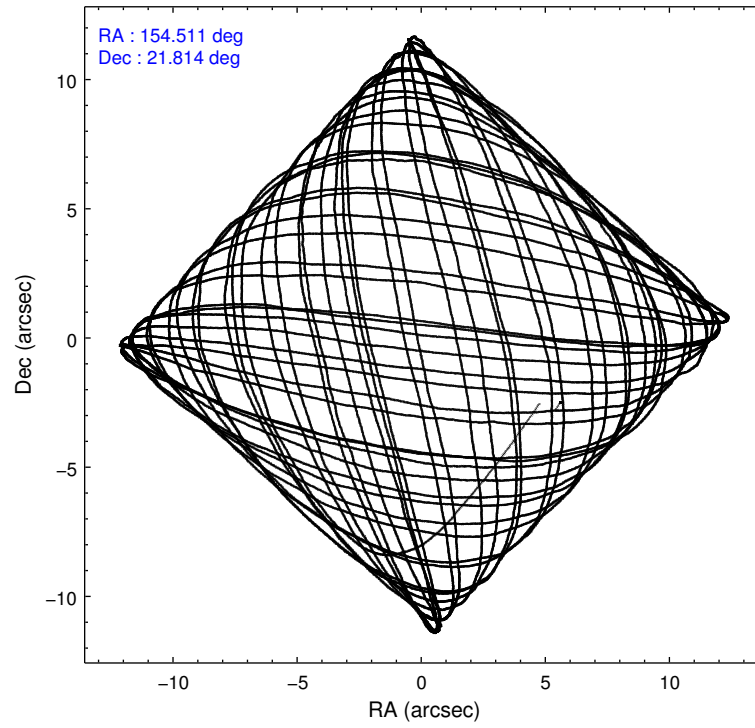
2.1.4 Events

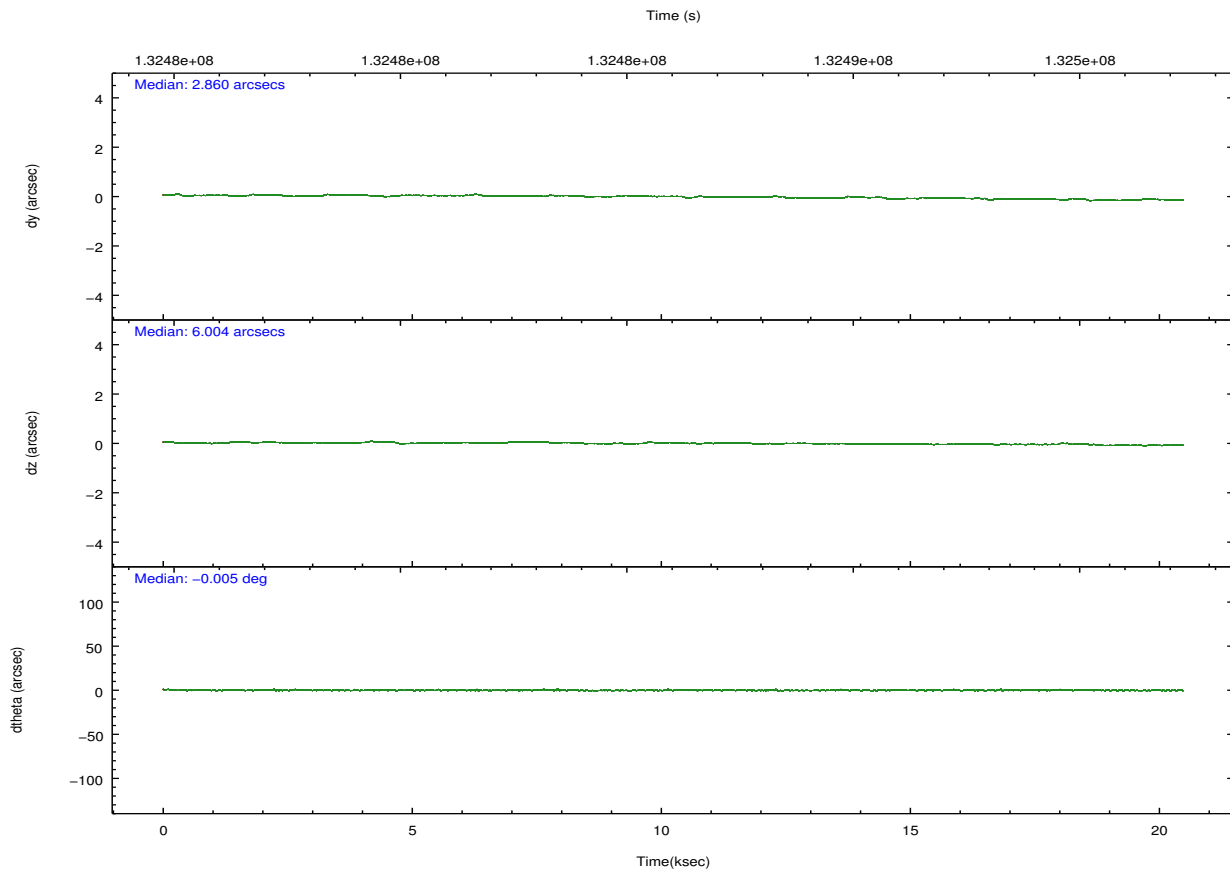
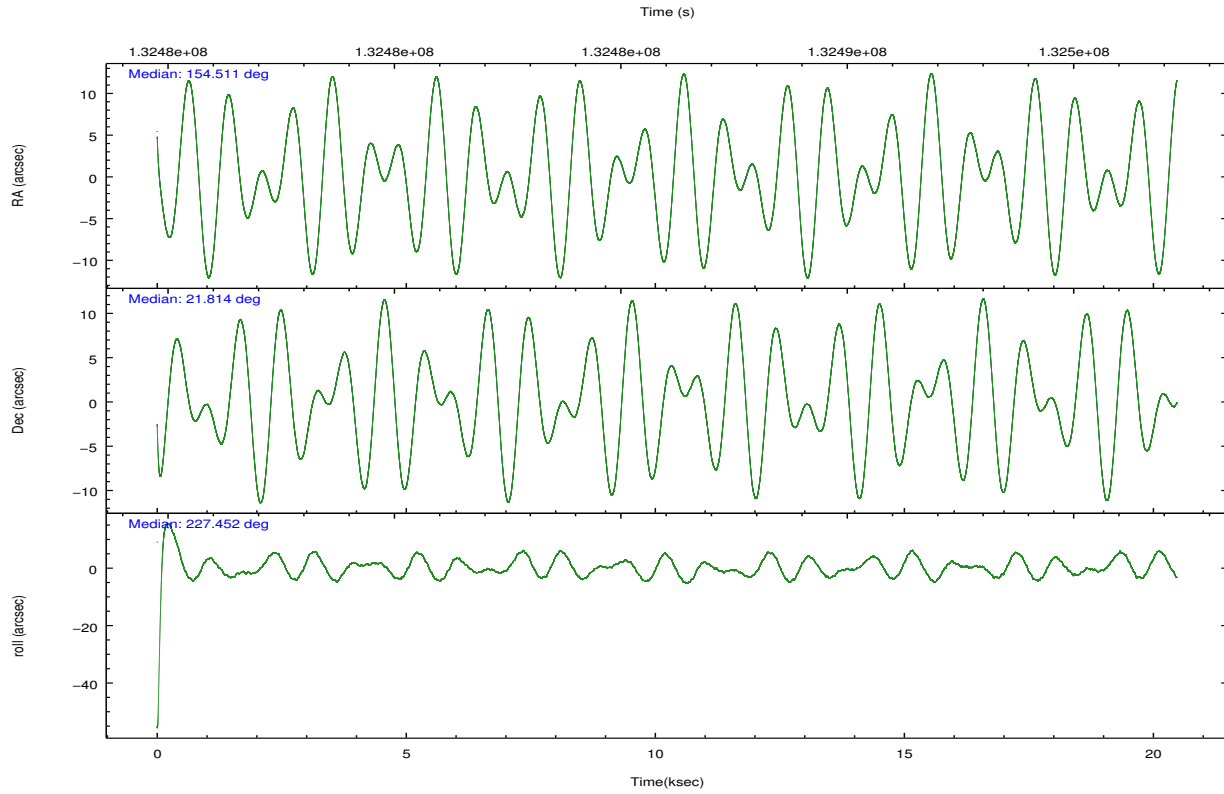
	ccd 2	ccd 3	ccd 5	ccd 6	ccd 7	ccd 8		ccd 2	ccd 3	ccd 5	ccd 6	ccd 7	ccd 8
level 1 events	136319	130934	191103	134853	174943	169215	grade 0 events	6792	6360	7771	6278	7263	11318
rejected events	120701	116012	104933	119172	101686	134536		4%	4%	4%	4%	4%	6%
rejected %	88%	88%	54%	88%	58%	79%	grade 1 events	67	59	331	71	152	108
								0%	0%	0%	0%	0%	0%
							grade 2 events	3337	3050	25254	3137	14421	7381
								2%	2%	13%	2%	8%	4%
							grade 3 events	1390	1396	3801	1521	6660	3822
								1%	1%	1%	1%	3%	2%
							grade 4 events	1412	1484	3418	1577	6542	3507
								1%	1%	1%	1%	3%	2%
							grade 5 events	4743	5274	14661	5859	16395	7074
								3%	4%	7%	4%	9%	4%
							grade 6 events	2693	2638	45960	3173	38396	8666
								1%	2%	24%	2%	21%	5%
							grade 7 events	115885	110673	89907	113237	85114	127339
								85%	84%	47%	83%	48%	75%

2.2 Compared Parameters

Parameter	Planned	Actual	Parameter	Planned	Actual
Instrument	ACIS	ACIS	Obspar format version number	7	7
Detector	ACIS-235678	ACIS-235678	Obspar file type	PREDICTED	ACTUAL
Grating	NONE	NONE	Obspar update status	NONE	UPDATED
Data mode	FAINT	FAINT	Number of optional ACIS chips dropped	0	0
Observation mode	POINTING	POINTING	On-chip summing requested	N	N
[deg] Pointing RA	154.516623	154.5105958683137	Subarray requested	NONE	NONE
[deg] Pointing Dec	21.840836	21.81415640391597	Alternating exposures requested	N	N
[deg] Pointing Roll	227.296286	227.4551111369676	[s] Primary exposure time	0.000000	3.2
[mm] SIM focus pos	-0.684267	-0.6828225247311905			
[mm] SIM defocus	0	0.001444936568705701			
[mm] SIM translation stage pos	-190.132523	-190.1425803651734			
[mm] SIM translation stage offset	0	0.01005778216563158			
[s] Observation start time (MET)	132475941.184000	132474859.78868			
Observation start date	2002-03-14T06:51:17	2002-03-14T06:34:19			
[s] Observation end time (MET)	132496255.184000	132496570.31456			
Observation end date	2002-03-14T12:29:51	2002-03-14T12:36:10			
Read mode	TIMED	TIMED			

2.3 Aspect



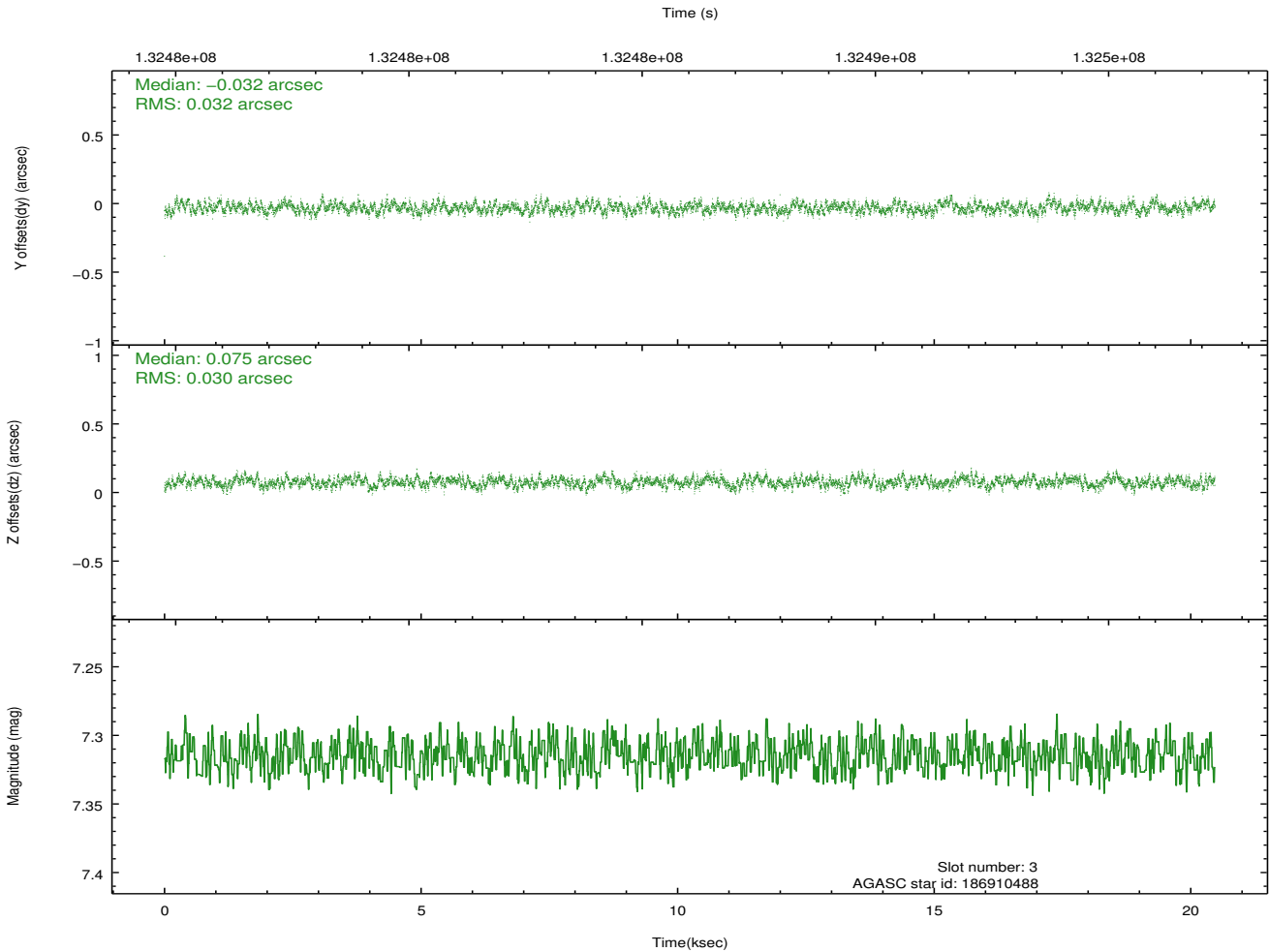
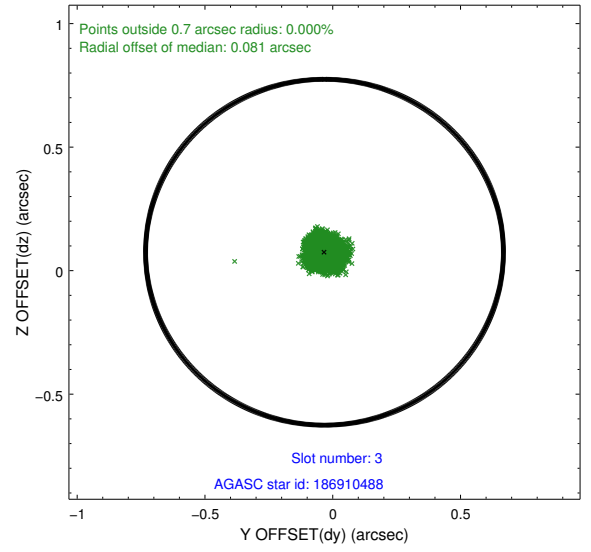
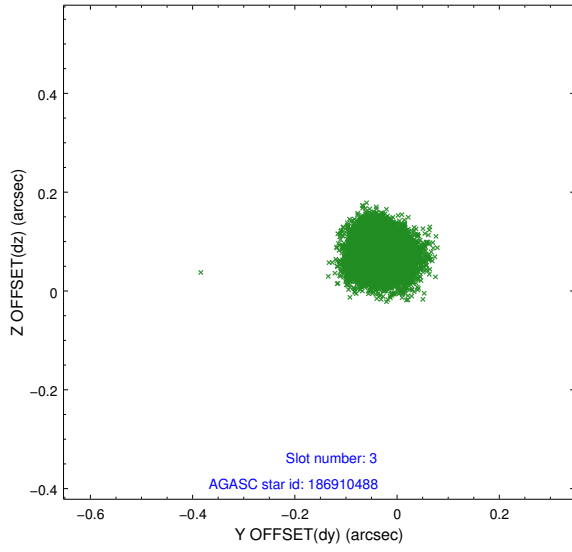


Slot Statistics

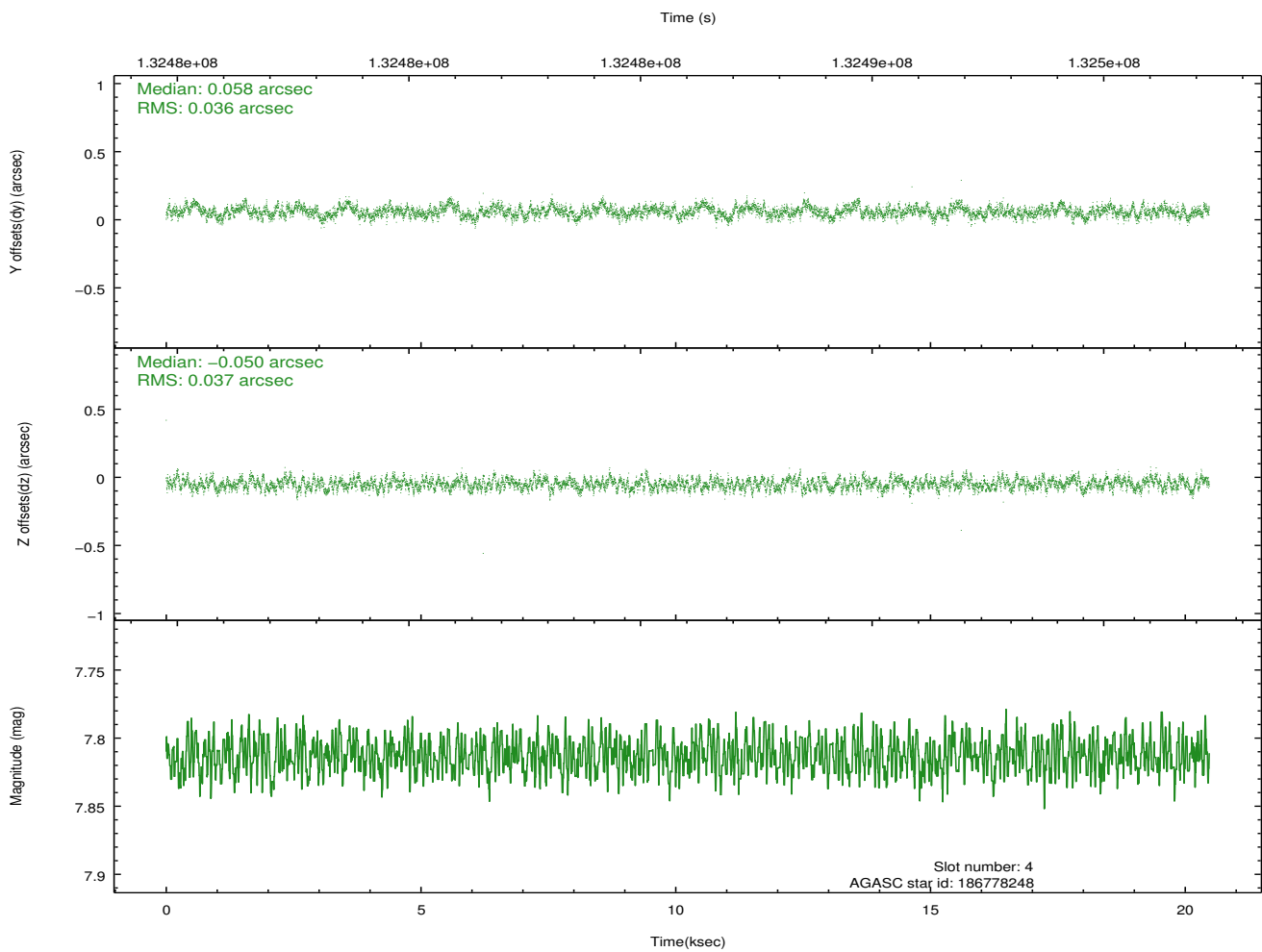
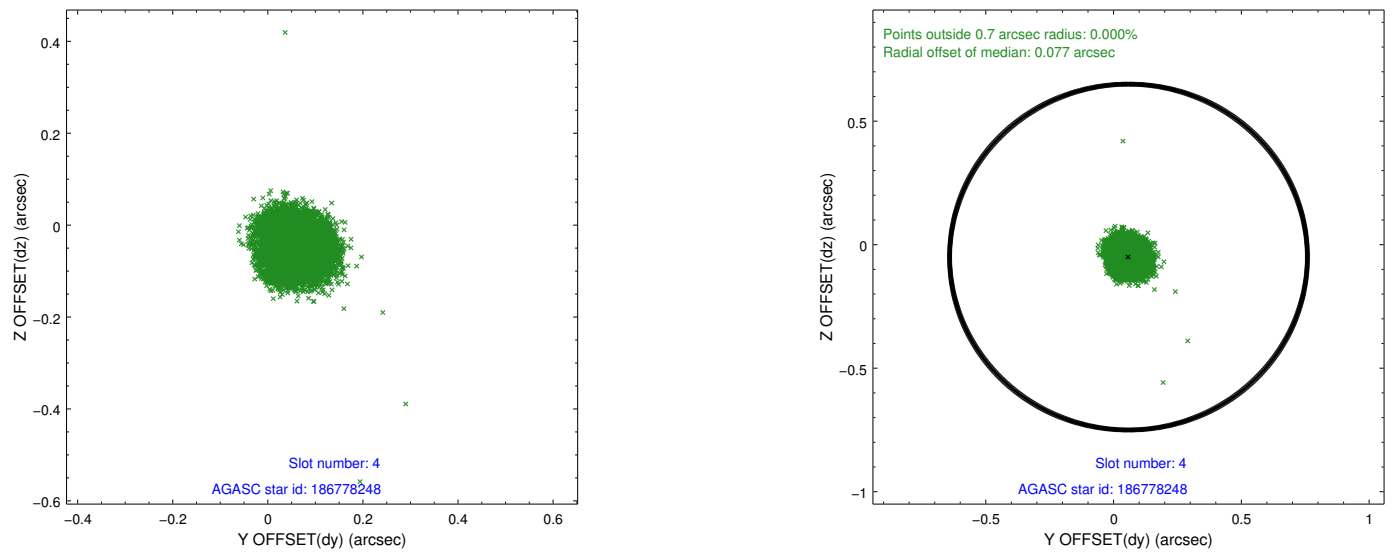
slot	status	id	mag	n_pts	med_dy	med_dz	dr1	dr2	ra	dec	mean_y	mean_z
0	FID	ACIS-S-2	7.12	4994	-0.037	0.012	0.006	0.011	0.000000	0.000000	-755.47	-1727.09
1	FID	ACIS-S-4	7.21	4994	-0.021	0.014	0.006	0.011	0.000000	0.000000	2157.69	181.28
2	FID	ACIS-S-5	7.24	4994	0.026	-0.018	0.007	0.013	0.000000	0.000000	-1808.07	175.02
3	GUIDE	186910488	7.32	9984	-0.032	0.075	0.047	0.073	155.064237	22.011425	-1691.94	924.51
4	GUIDE	186778248	7.81	9984	0.058	-0.050	0.055	0.086	154.251642	21.913046	409.94	-826.95
5	GUIDE	186784080	8.45	9986	0.078	0.038	0.061	0.098	153.932216	21.529554	2149.82	-680.59
6	GUIDE	186910328	8.79	9984	-0.022	-0.066	0.057	0.093	154.791807	22.043886	-1158.92	178.32
7	GUIDE	186779440	9.40	9977	-0.082	0.004	0.093	0.151	154.357260	22.385713	-1080.58	-1720.36

2.4 Star Slots

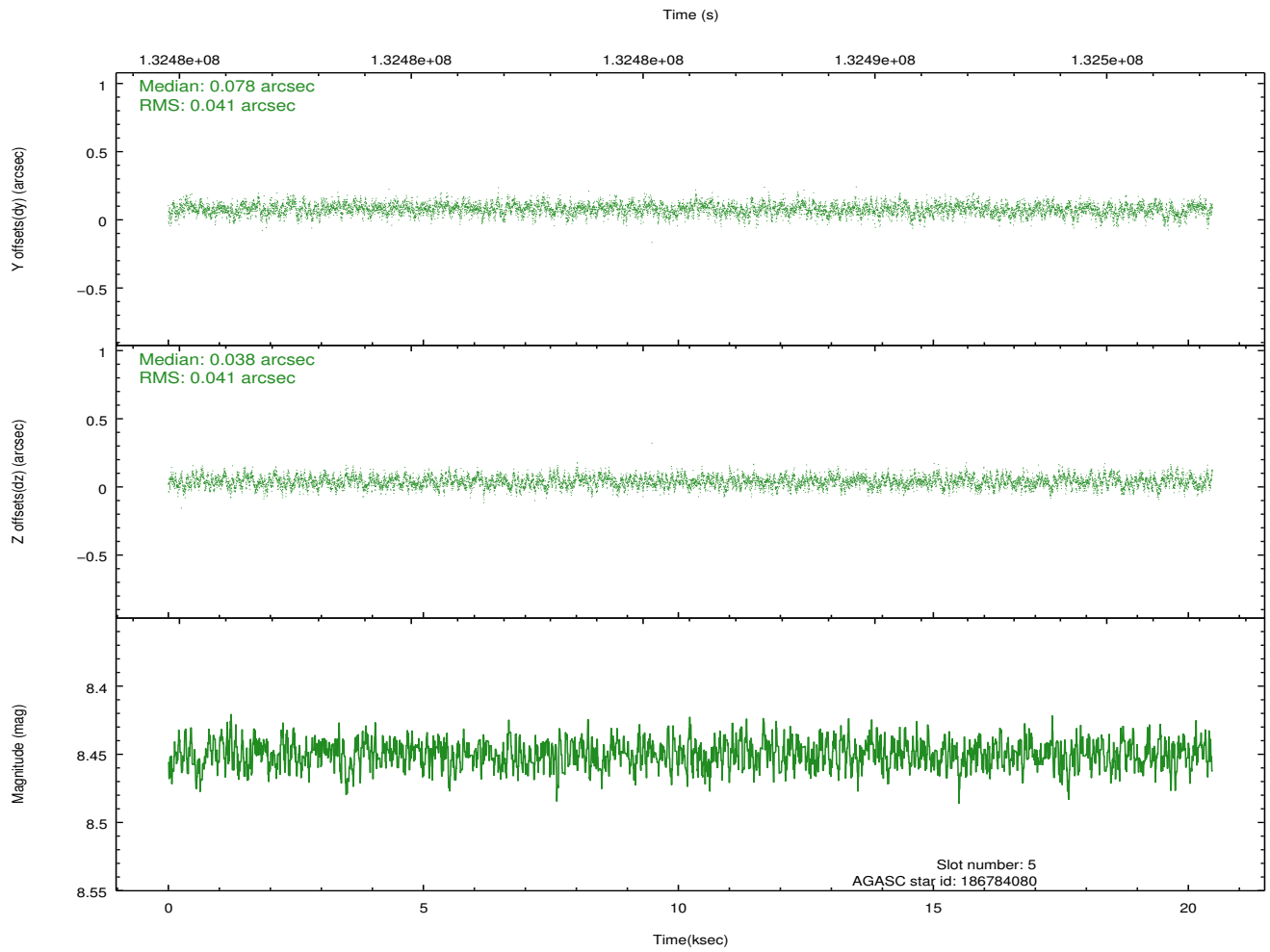
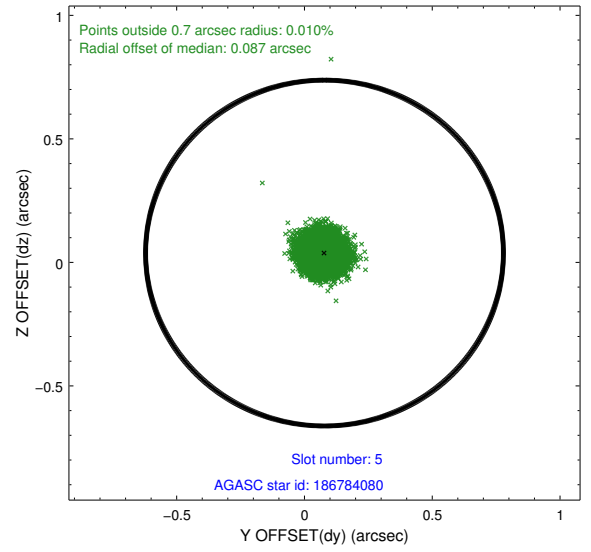
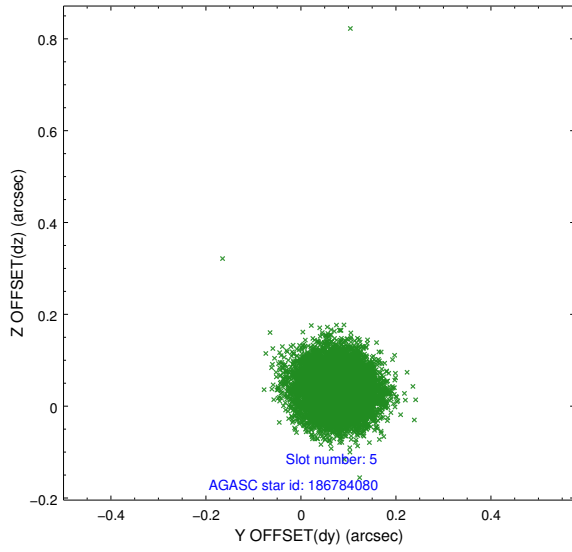
2.4.1 Slot 3



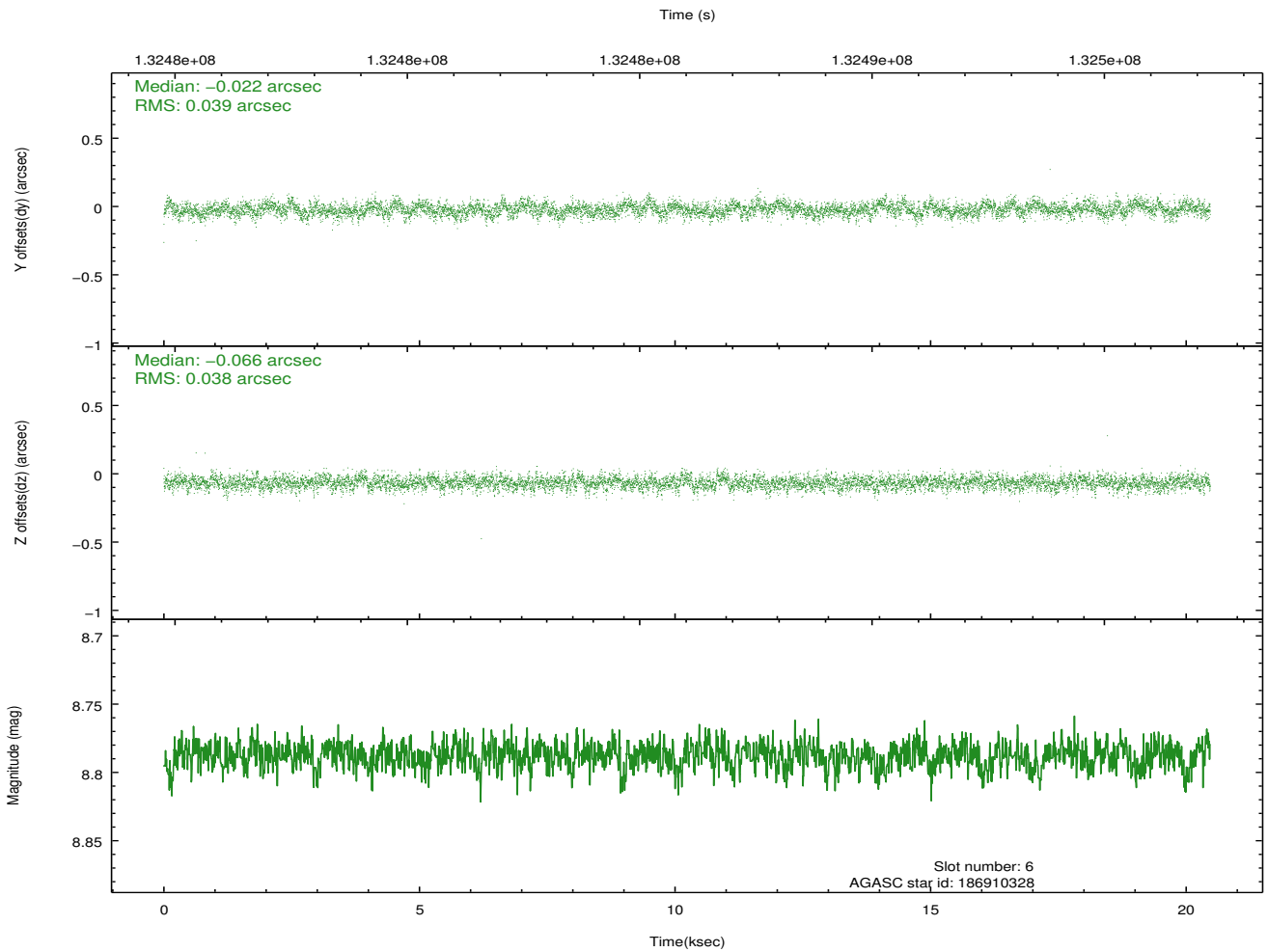
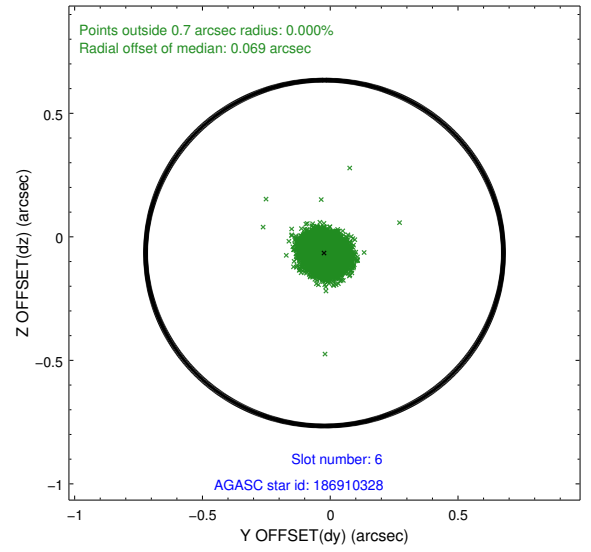
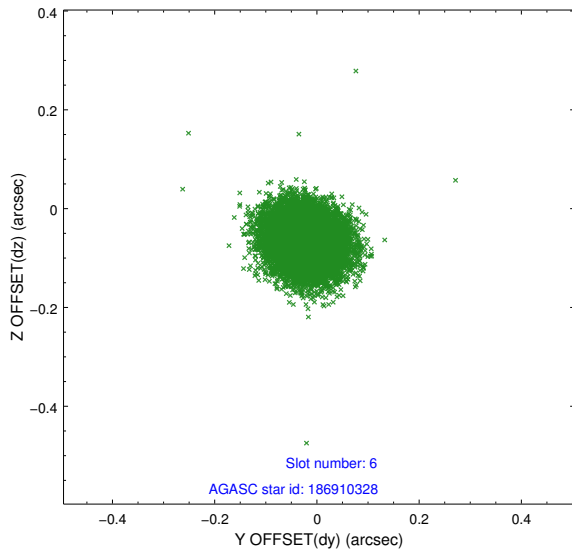
2.4.2 Slot 4



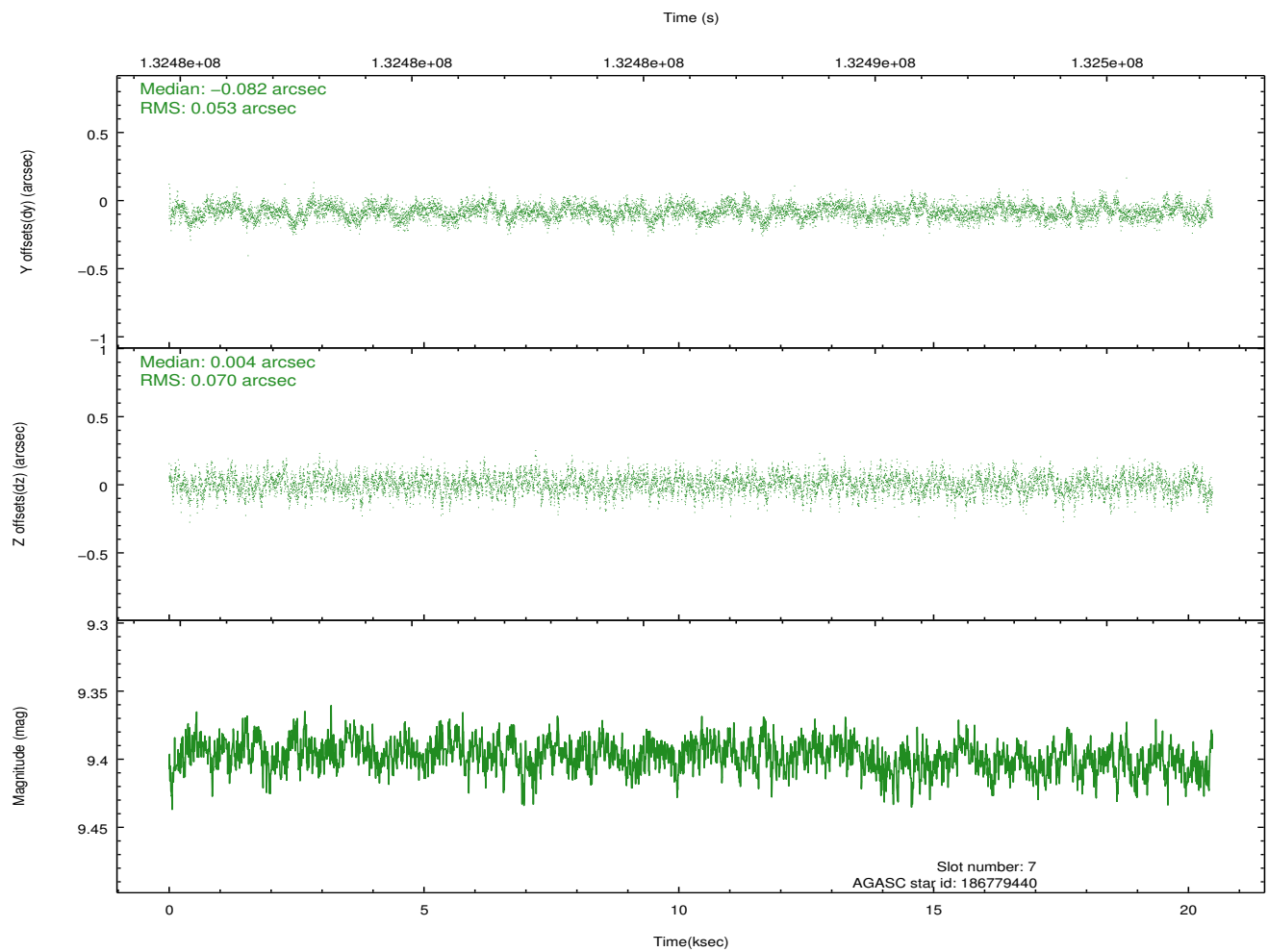
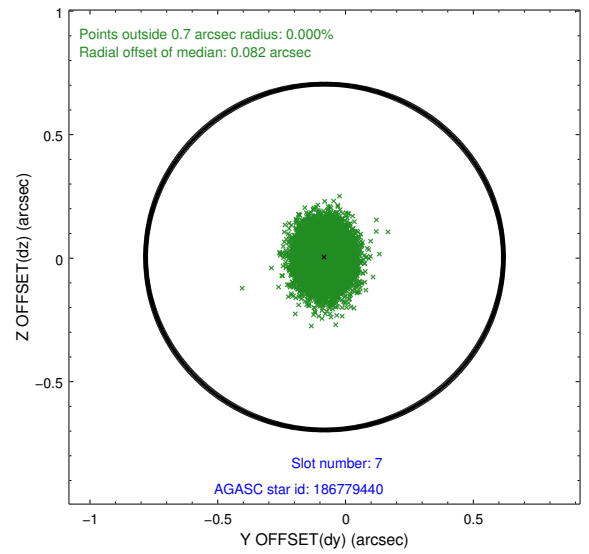
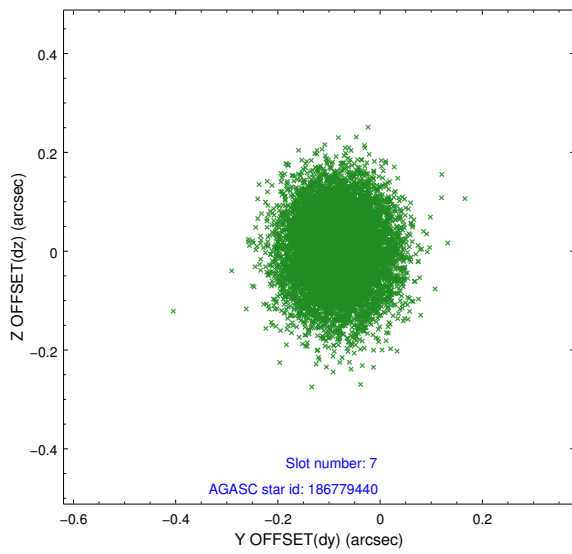
2.4.3 Slot 5



2.4.4 Slot 6

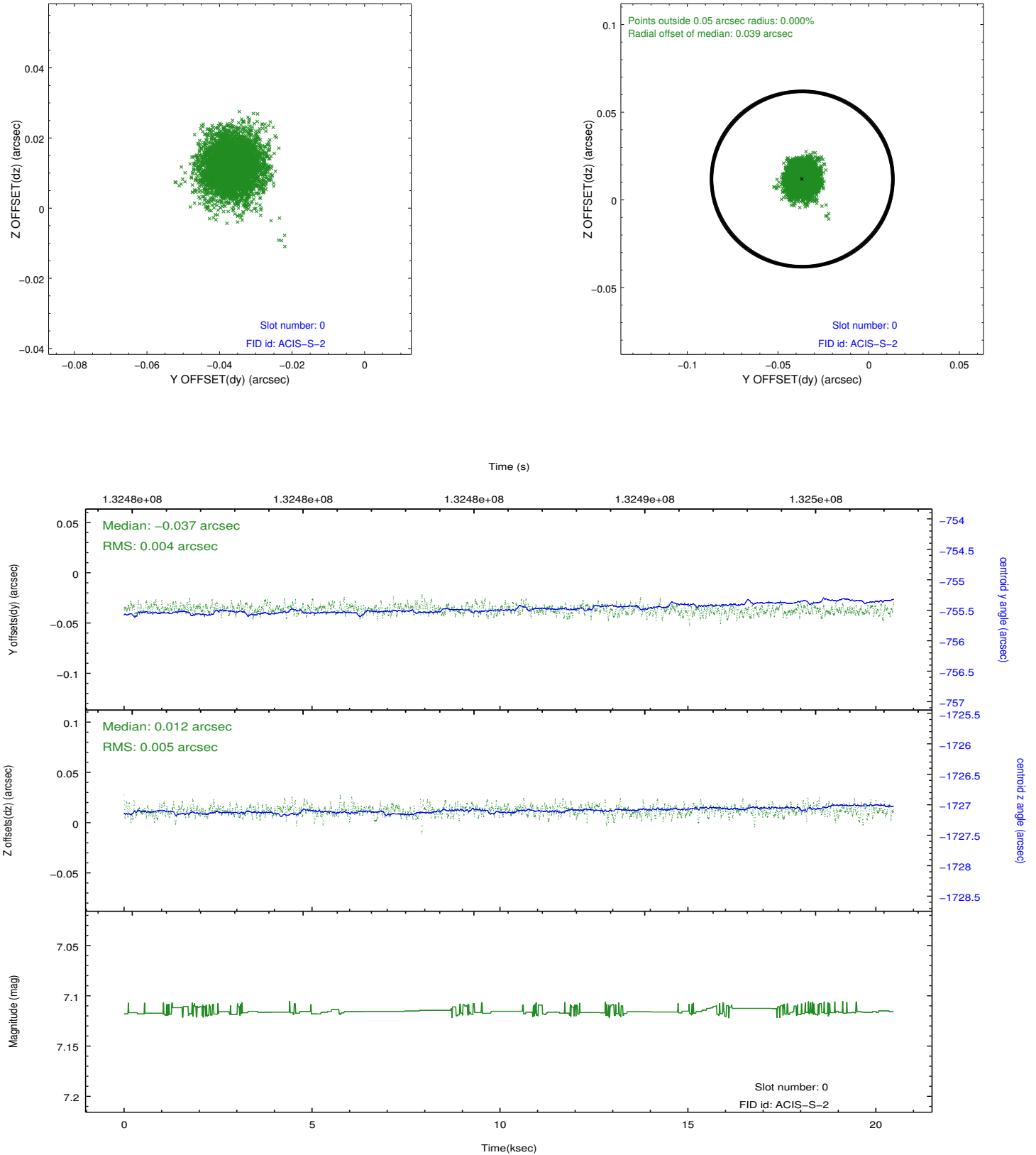


2.4.5 Slot 7

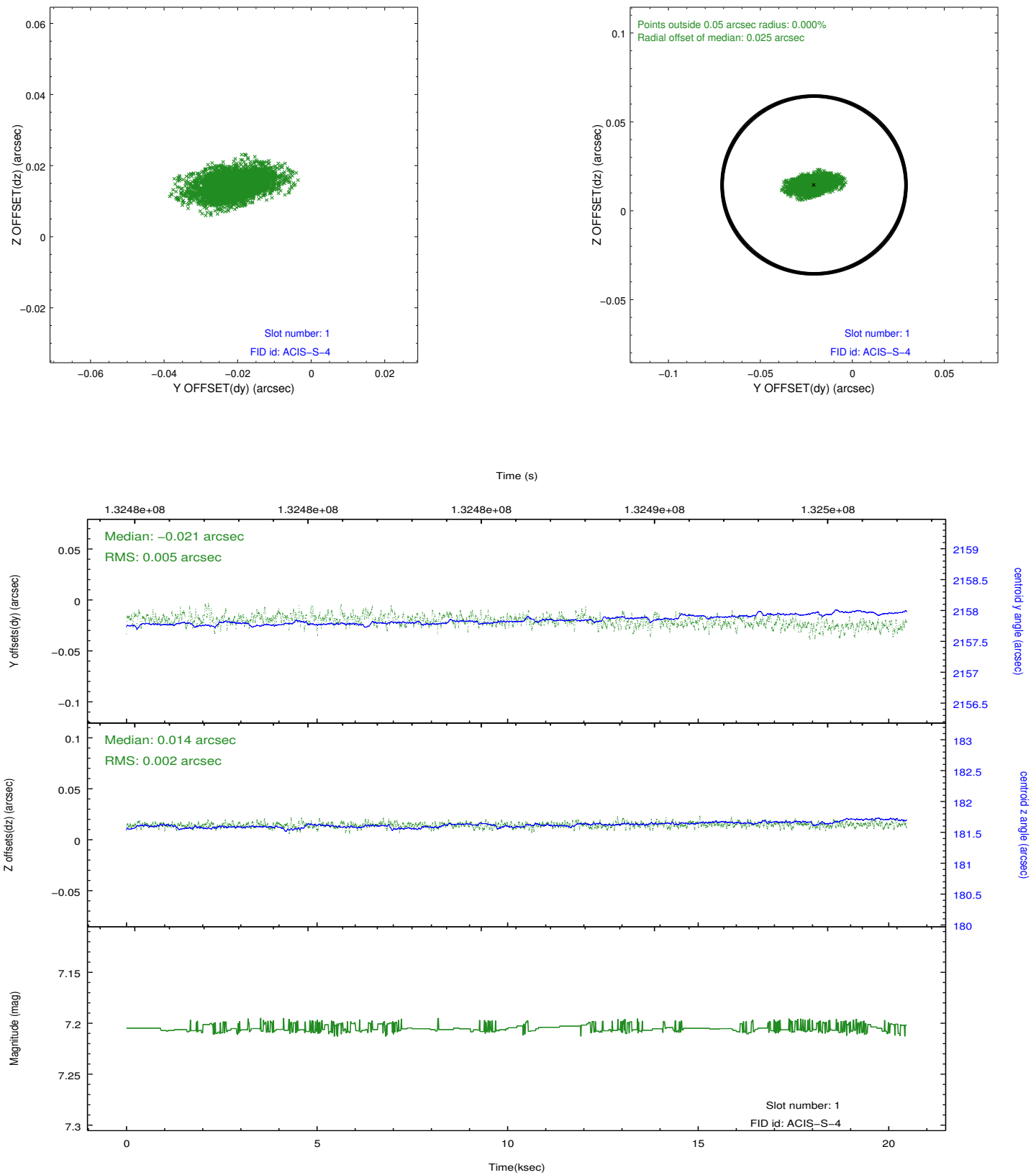


2.5 FID Slots

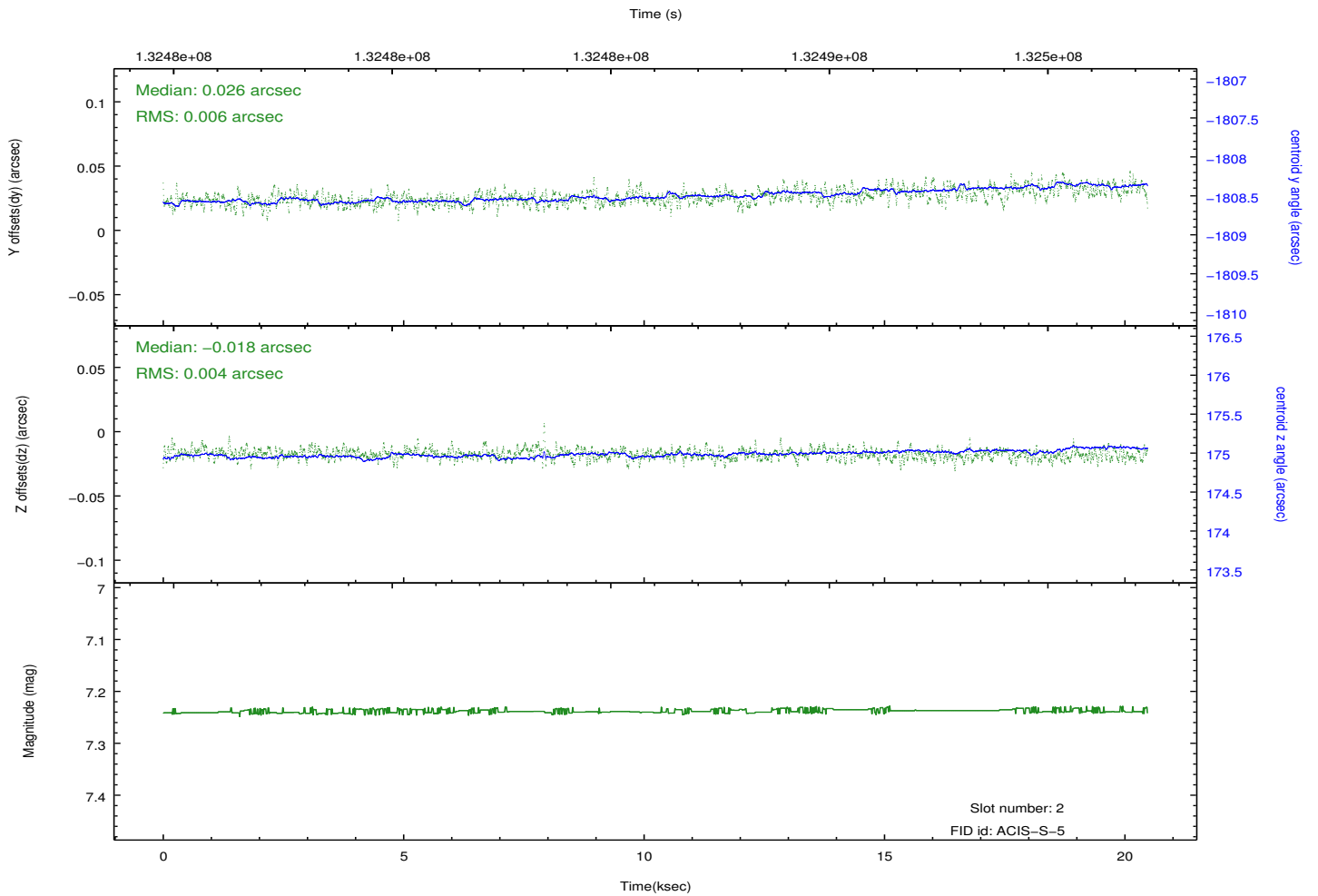
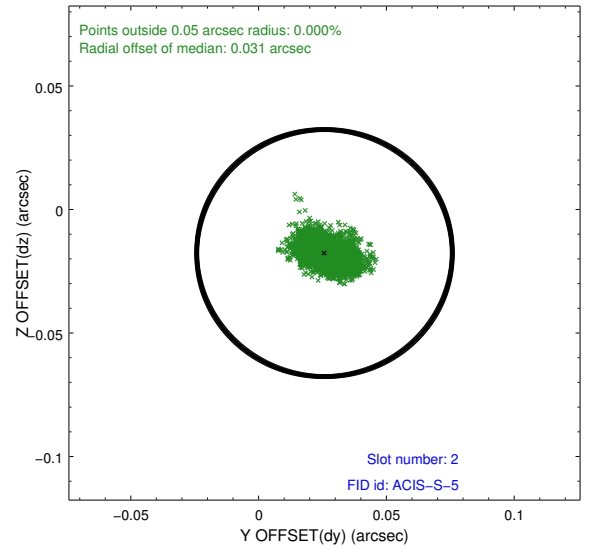
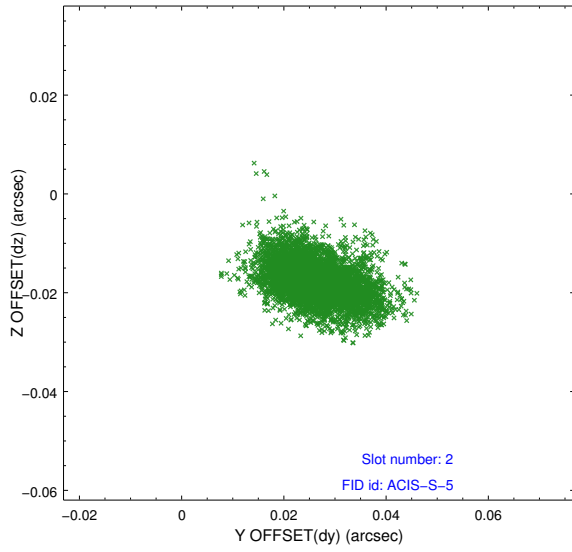
2.5.1 Slot 0



2.5.2 Slot 1



2.5.3 Slot 2



A Summary

A.1 Status

V&V Scientist	Beth Sundheim
V&V Date (YYYY-MM-DD)	2012.10.09
V&V Edition	1
V&V Disposition and Status	OK
V&V Charge Time	20.067

A.2 Comments