

V&V Reference Report

L2 ASCDS Version : 8.4.5

Observation 2830 - L2 Version 3
Chandra X-Ray Center

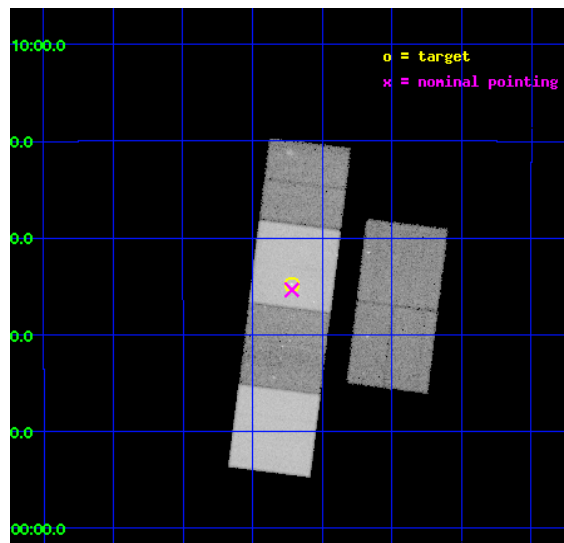
L2 Processing Date : Oct 17 2012

Contents

1	Front	2
2	OBI	3
2.1	OBI	3
2.1.1	Images	3
2.1.2	Bias	3
2.1.3	Parameters	4
2.1.4	Events	4
2.2	Compared Parameters	5
2.3	Aspect	6
2.4	Star Slots	9
2.4.1	Slot 3	9
2.4.2	Slot 4	10
2.4.3	Slot 5	11
2.4.4	Slot 6	12
2.4.5	Slot 7	13
2.5	FID Slots	14
2.5.1	Slot 0	14
2.5.2	Slot 1	15
2.5.3	Slot 2	16
A	Summary	17
A.1	Status	17
A.2	Comments	17

1 Front

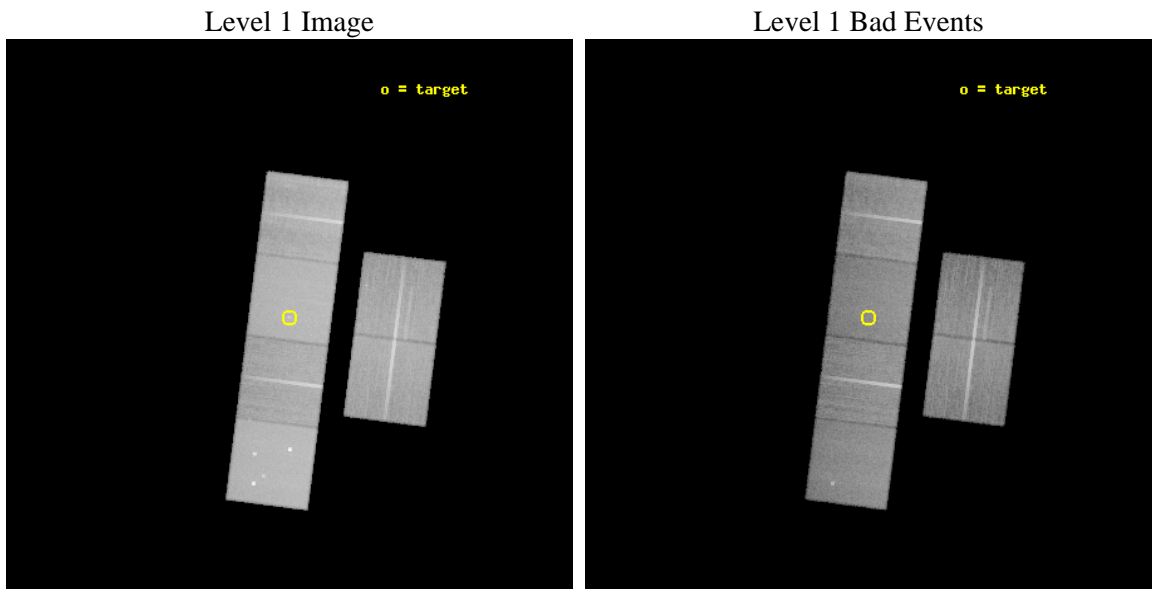
seq_num	500280	Sequence number
obs_id	2830	Observation id
title	SPATIAL AND SPECTRAL STUDIES OF X-RAYS FROM PSR B1823-13 AND ITS COMPACT NEBULA	Proposal title
observer	DR. SACHIKO TSURUTA	Principal investigator
object	PSR B1823-13	Source name
dtcycle	0	
cycle	P	events from which exps? Prim/Second/Both
ra_targ	276.554875	Observer's specified target RA [deg]
dec_targ	-13.579778	Observer's specified target Dec [deg]
ra_nom	276.55436984032	Nominal RA [deg]
dec_nom	-13.589450451734	Nominal Dec [deg]
roll_nom	277.18159815941	Nominal Roll [deg]
revision	3	Processing version of data
ontime	41359.999845922	Sum of GTIs [s]
livetime	40836.274623871	Livetime [s]
ontime2	41359.999845922	Sum of GTIs [s]
ontime3	41359.999845922	Sum of GTIs [s]
ontime5	41359.999845922	Sum of GTIs [s]
ontime6	41356.758875638	Sum of GTIs [s]
ontime7	41359.999845922	Sum of GTIs [s]
ontime8	41359.999845922	Sum of GTIs [s]
l2events	490479	Number of level 2 events



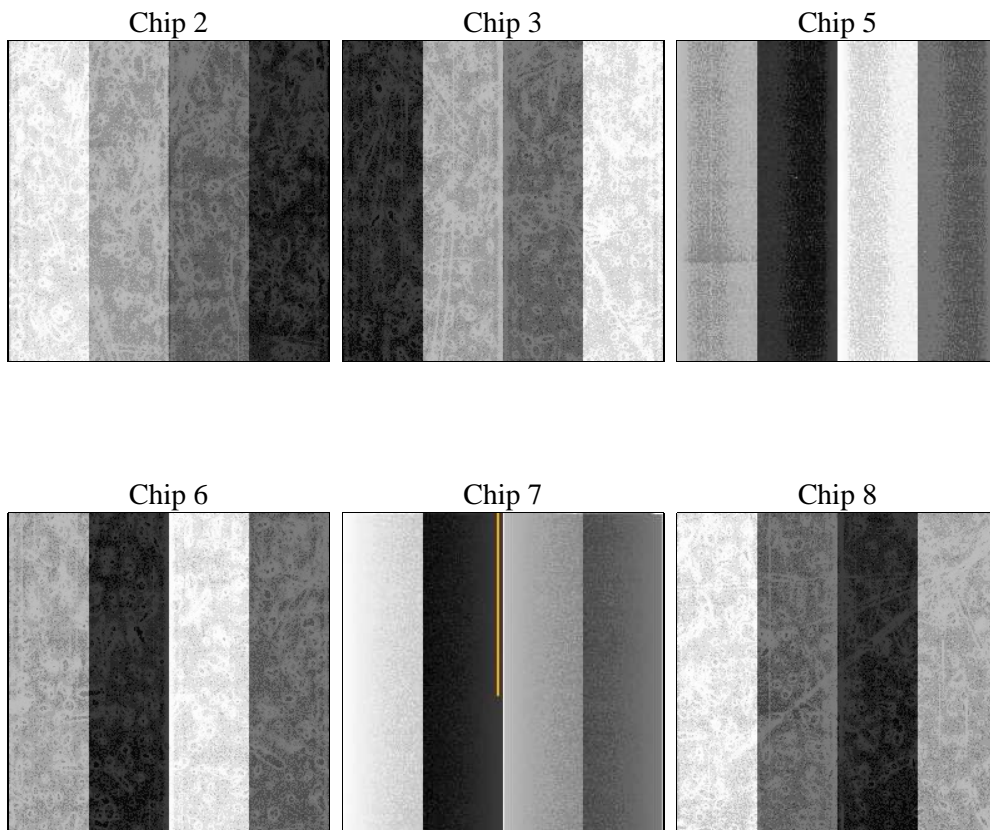
2 OBI

2.1 OBI

2.1.1 Images



2.1.2 Bias



2.1.3 Parameters

obi_num	0	Obi number	sched_exp_time	41400.000000	[s] Scheduled observation exposure time
ascdsver	8.4.5	Processing system revision	ontime	41359.999845922	Sum of GTIs [s]
caldbver	4.5.2	 	ontime2	41359.999845922	Sum of GTIs [s]
date	2012-10-17T00:59:33	Date and time of file creation	ontime3	41359.999845922	Sum of GTIs [s]
revision	3	Processing version of data	ontime5	41359.999845922	Sum of GTIs [s]
			ontime6	41356.758875638	Sum of GTIs [s]
			ontime7	41359.999845922	Sum of GTIs [s]
			ontime8	41359.999845922	Sum of GTIs [s]
			l1events	1885511	Number of level 1 events

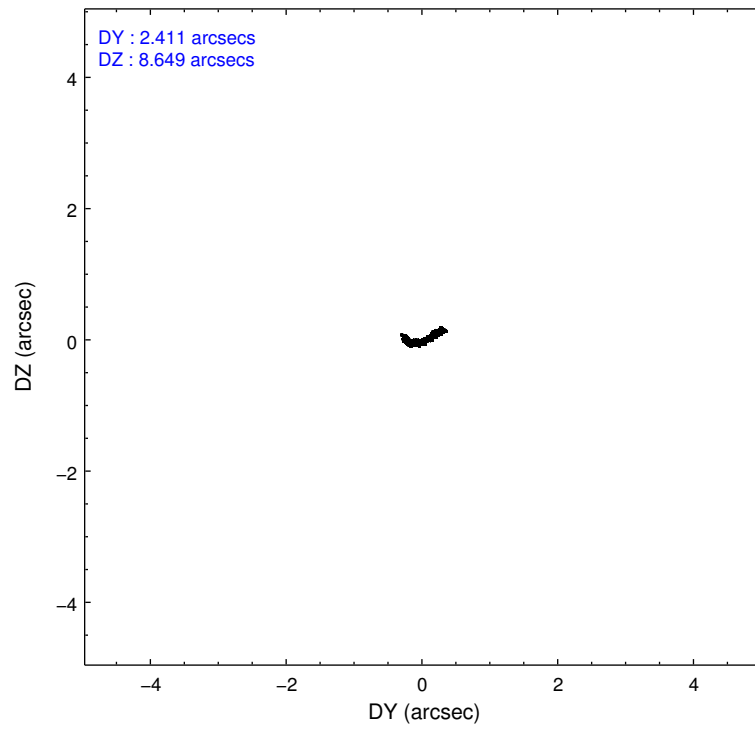
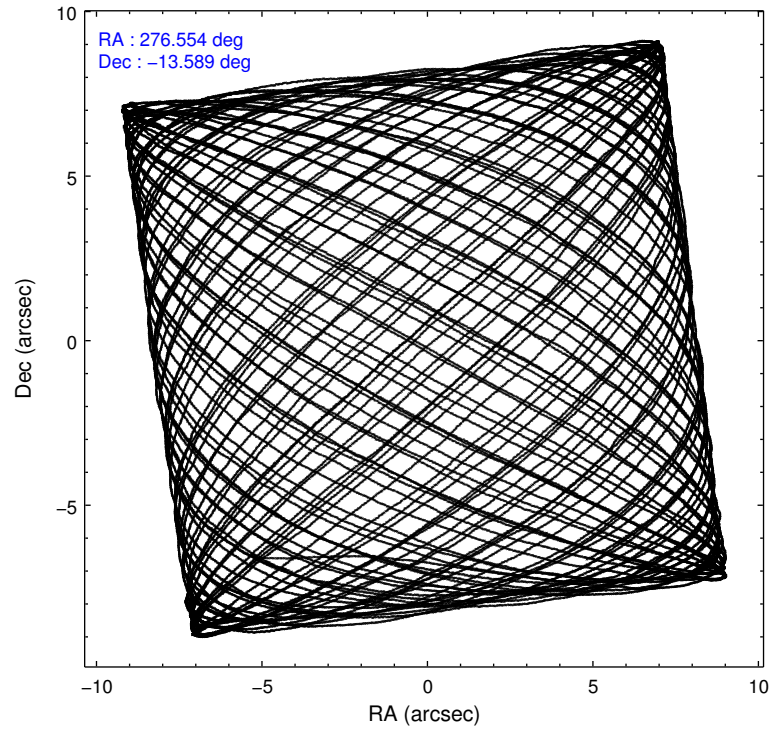
2.1.4 Events

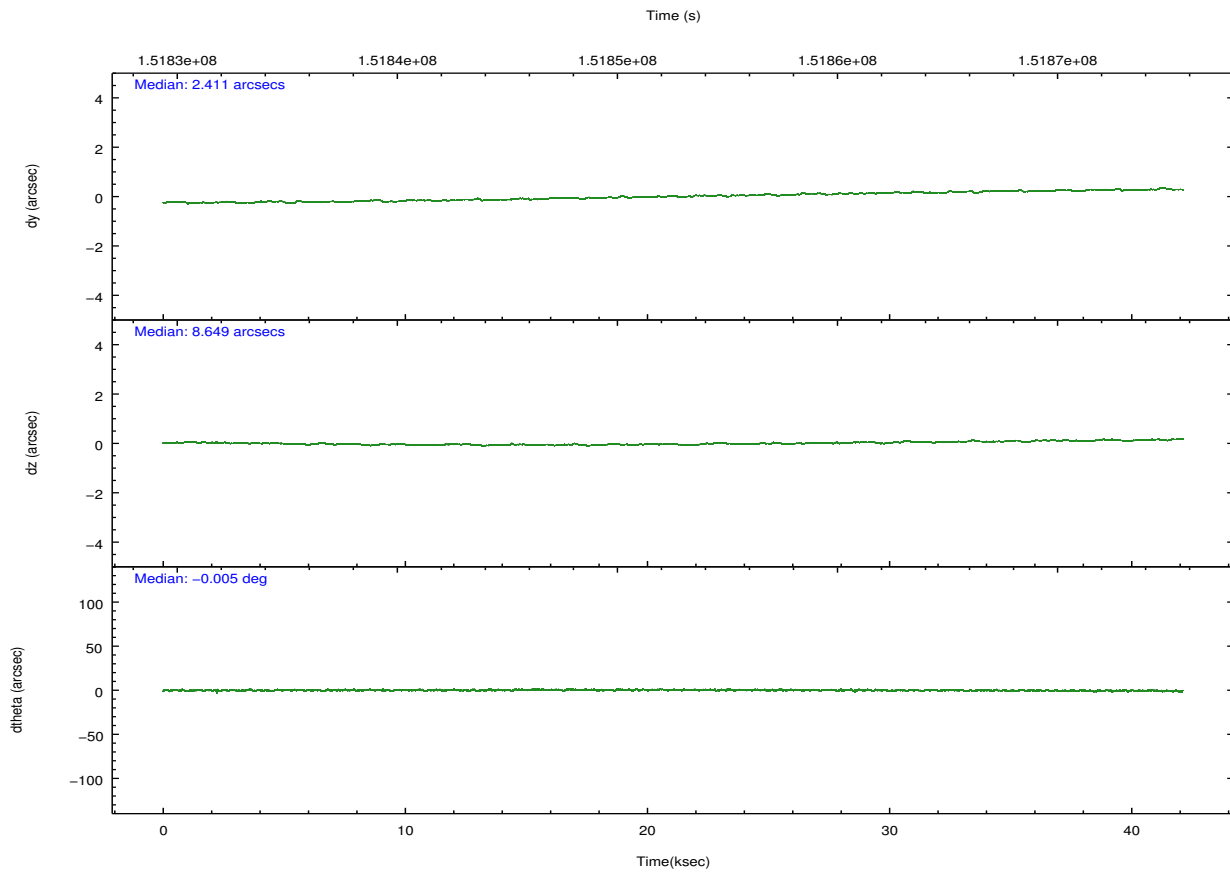
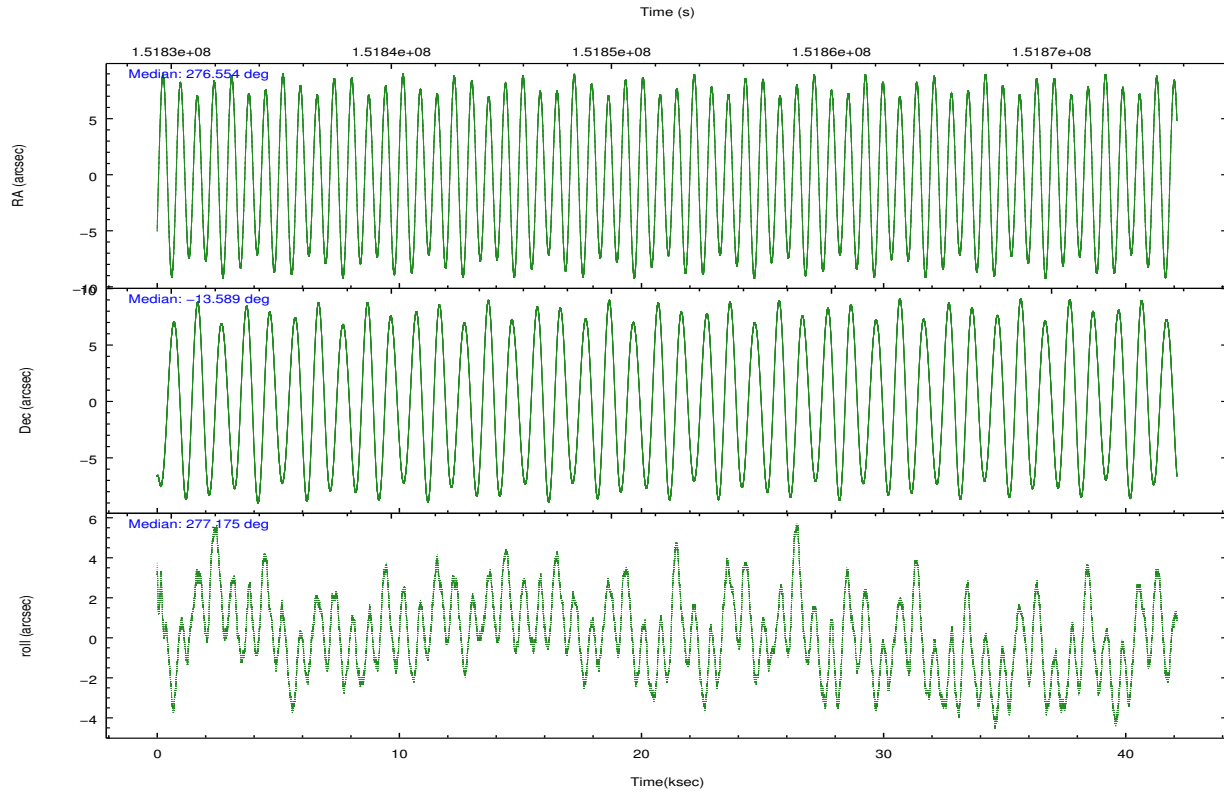
	ccd 2	ccd 3	ccd 5	ccd 6	ccd 7	ccd 8		ccd 2	ccd 3	ccd 5	ccd 6	ccd 7	ccd 8
level 1 events	260841	249741	409859	270288	373350	321432	grade 0 events	16971	16049	27093	19693	18795	25070
rejected events	226532	216567	205368	230669	196327	251946		6%	6%	6%	7%	5%	7%
rejected %	86%	86%	50%	85%	52%	78%	grade 1 events	180	157	462	145	312	214
								0%	0%	0%	0%	0%	0%
							grade 2 events	6408	5881	59630	7290	34832	14134
								2%	2%	14%	2%	9%	4%
							grade 3 events	3013	2990	9016	3255	15563	7049
								1%	1%	2%	1%	4%	2%
							grade 4 events	2980	3082	8513	3196	15805	6590
								1%	1%	2%	1%	4%	2%
							grade 5 events	9696	10543	27835	11149	32299	14659
								3%	4%	6%	4%	8%	4%
							grade 6 events	4939	5174	100250	6189	92038	16647
								1%	2%	24%	2%	24%	5%
							grade 7 events	216654	205865	177060	219371	163706	237069
								83%	82%	43%	81%	43%	73%

2.2 Compared Parameters

Parameter	Planned	Actual	Parameter	Planned	Actual
Instrument	ACIS	ACIS	Obspar format version number	7	7
Detector	ACIS-235678	ACIS-235678	Obspar file type	PREDICTED	ACTUAL
Grating	NONE	NONE	Obspar update status	NONE	UPDATED
Data mode	FAINT	FAINT	Number of optional ACIS chips dropped	0	0
Observation mode	POINTING	POINTING	On-chip summing requested	N	N
[deg] Pointing RA	276.537136	276.554369840318	Subarray requested	NONE	NONE
[deg] Pointing Dec	-13.567961	-13.58945045173407	Alternating exposures requested	N	N
[deg] Pointing Roll	277.020925	277.1815981594075	[s] Primary exposure time	0.000000	3.2
[mm] SIM focus pos	-0.684267	-0.6828225247311905			
[mm] SIM defocus	0	0.001444936568705701			
[mm] SIM translation stage pos	-190.132523	-190.1400660498719			
[mm] SIM translation stage offset	0	0.00754346686406393			
[s] Observation start time (MET)	151832186.184000	151830957.50748			
Observation start date	2002-10-24T07:35:22	2002-10-24T07:15:57			
[s] Observation end time (MET)	151873586.184000	151874610.20929			
Observation end date	2002-10-24T19:05:22	2002-10-24T19:23:30			
Read mode	TIMED	TIMED			

2.3 Aspect



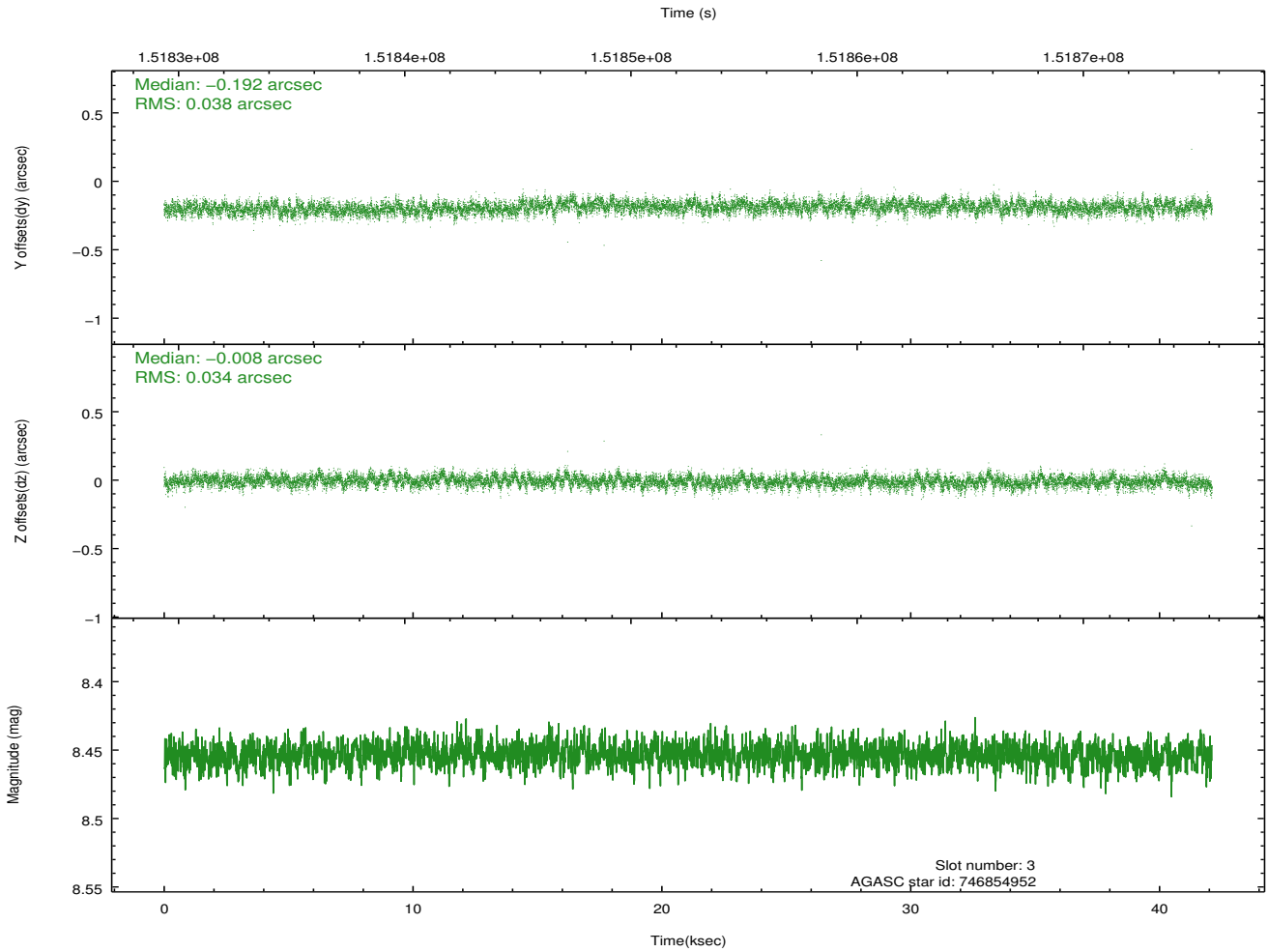
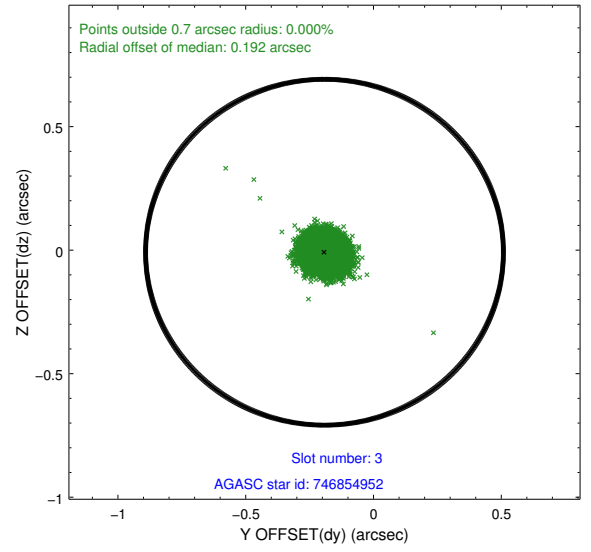
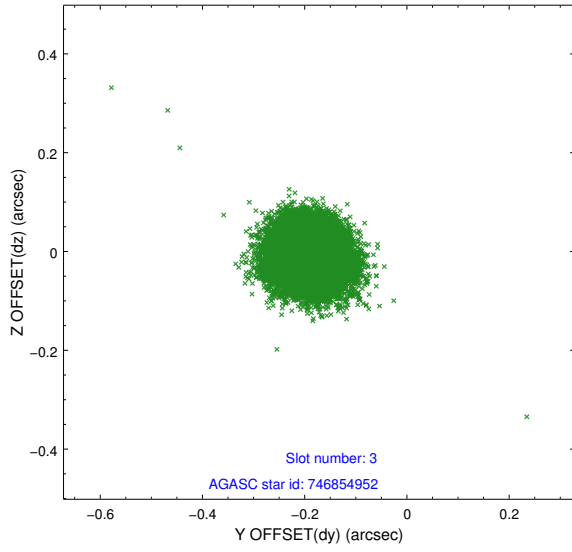


Slot Statistics

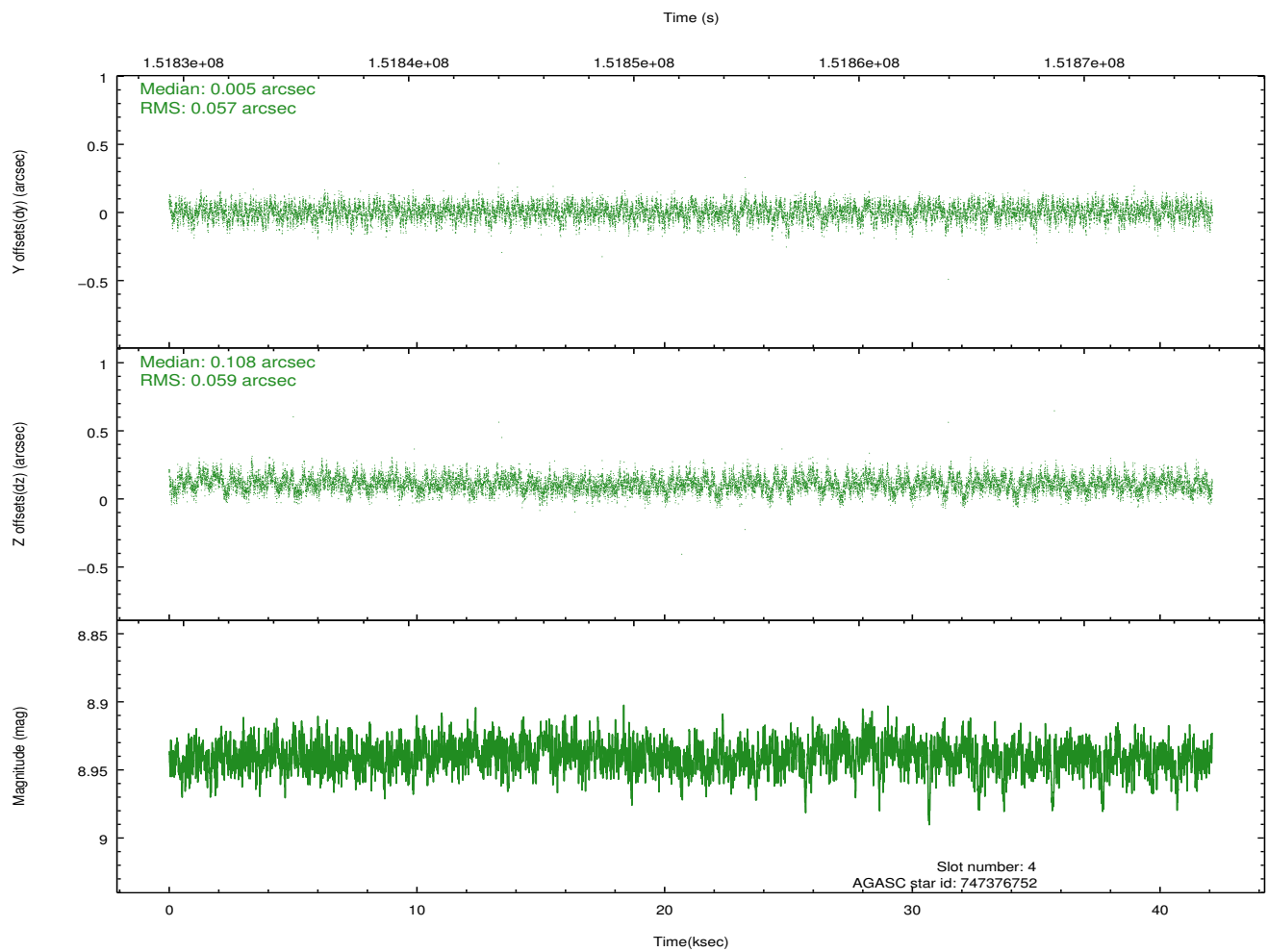
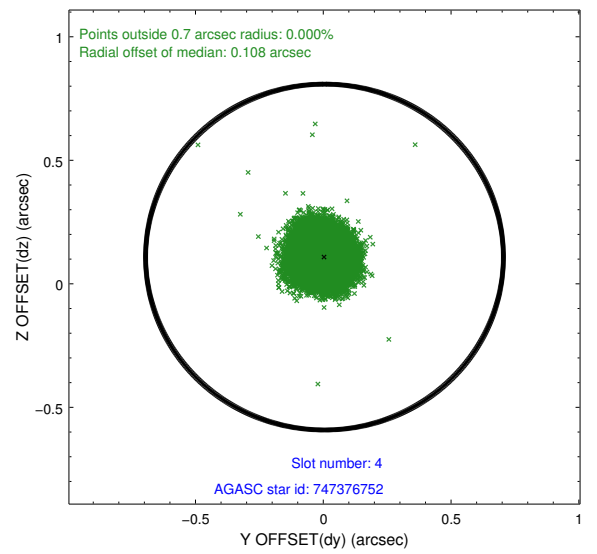
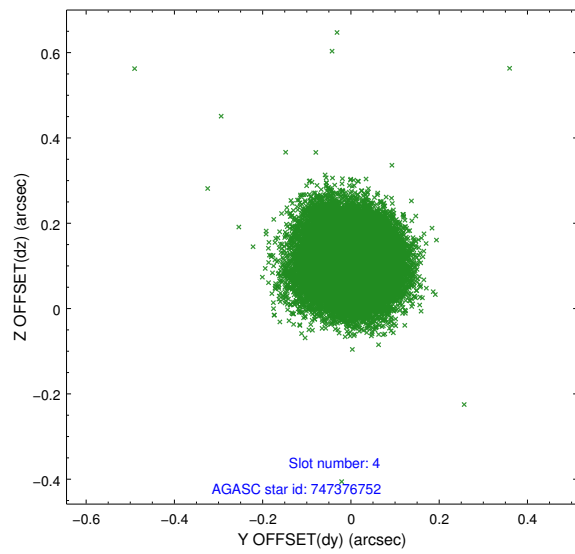
slot	status	id	mag	n_pts	med_dy	med_dz	dr1	dr2	ra	dec	mean_y	mean_z
0	FID	ACIS-S-1	7.19	10273	0.033	0.030	0.012	0.020	0.000000	0.000000	940.99	-1725.49
1	FID	ACIS-S-4	7.20	10273	-0.035	-0.032	0.013	0.020	0.000000	0.000000	2158.36	178.59
2	FID	ACIS-S-5	7.23	10273	-0.024	0.015	0.014	0.025	0.000000	0.000000	-1807.90	172.28
3	GUIDE	746854952	8.45	20535	-0.192	-0.008	0.054	0.087	276.590453	-12.990635	-2039.38	440.07
4	GUIDE	747376752	8.94	20542	0.005	0.108	0.087	0.139	276.959582	-13.662621	520.64	1425.69
5	GUIDE	747385144	9.18	20537	0.043	-0.083	0.070	0.118	276.168048	-13.912906	1076.82	-1431.27
6	GUIDE	747384384	9.60	20534	-0.066	-0.152	0.128	0.214	275.955964	-13.523194	-405.24	-1999.21
7	GUIDE	747388608	9.87	20527	0.214	0.132	0.130	0.208	277.121188	-14.160913	2371.12	1763.24

2.4 Star Slots

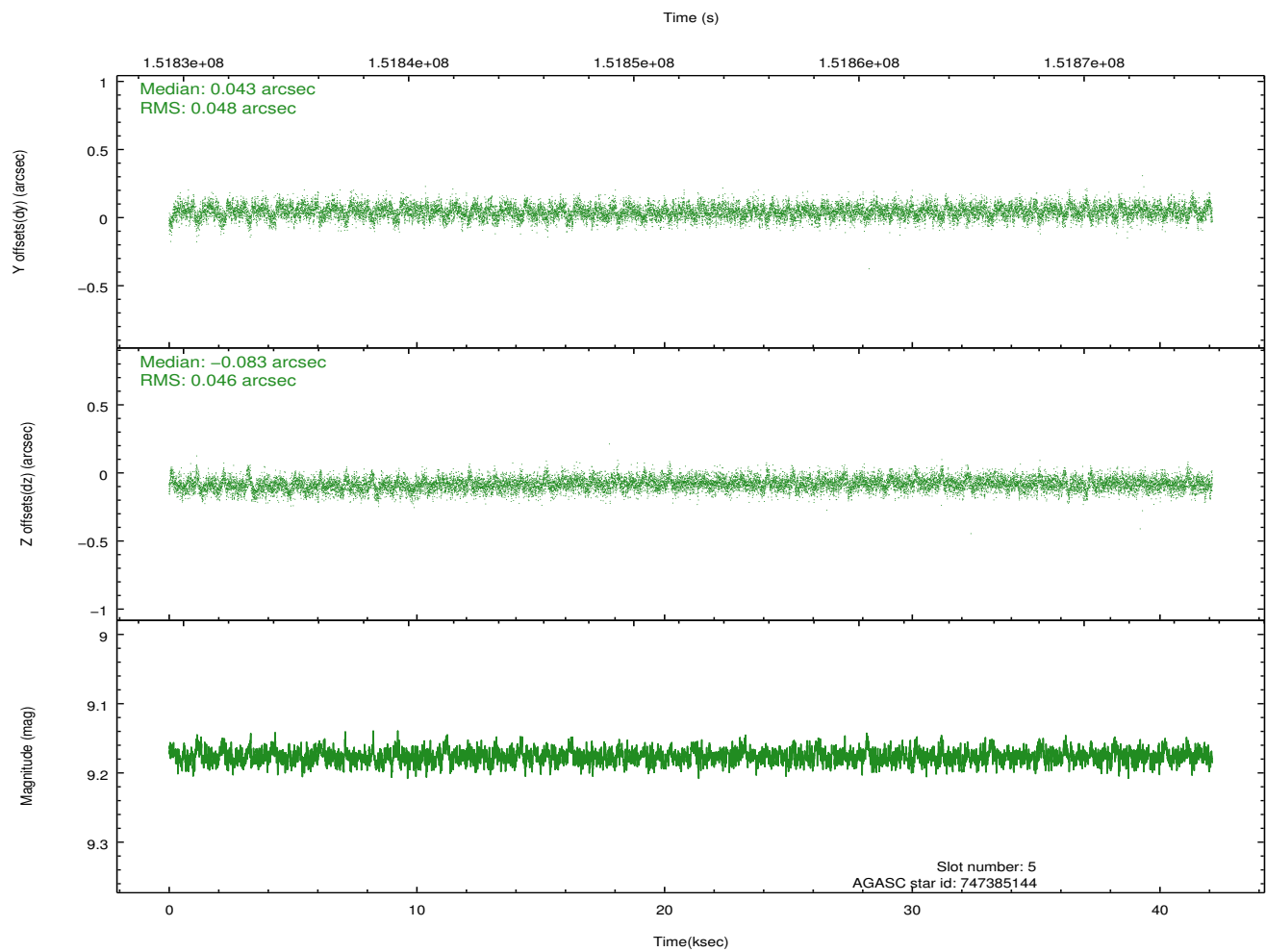
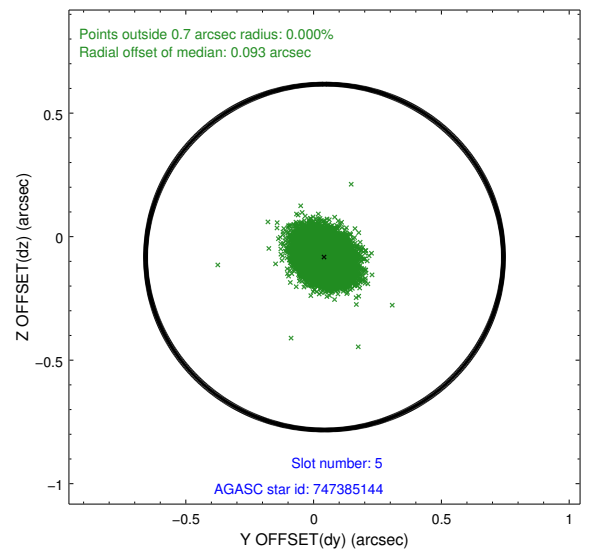
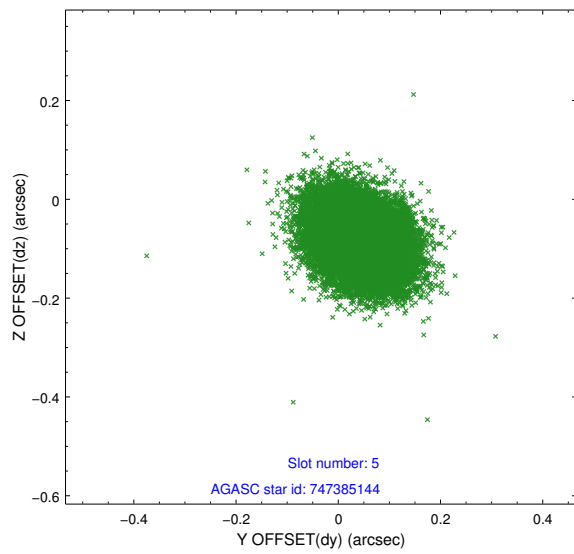
2.4.1 Slot 3



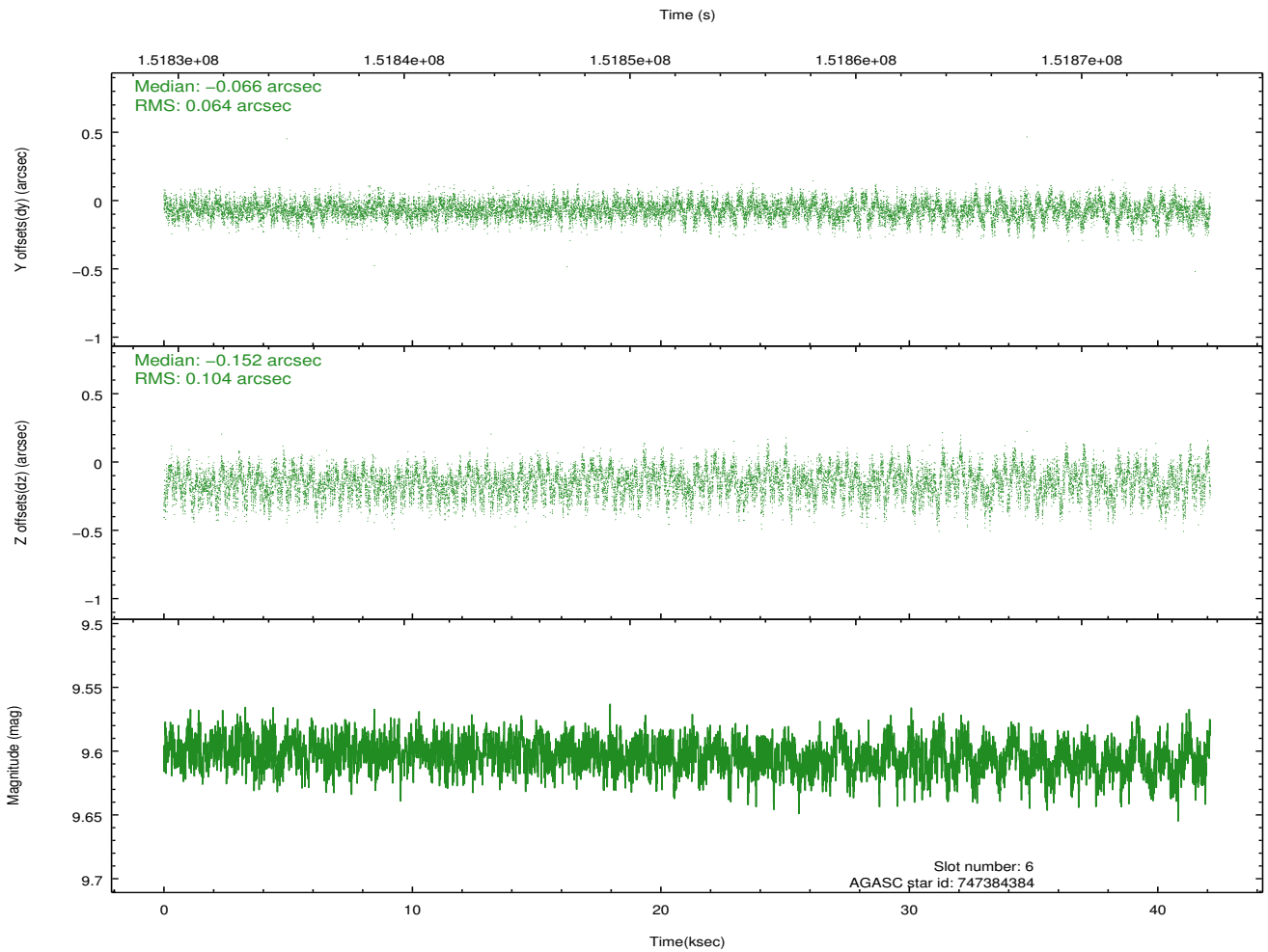
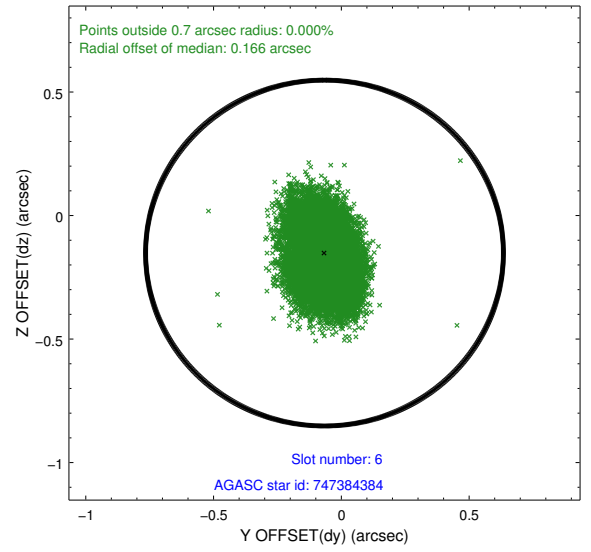
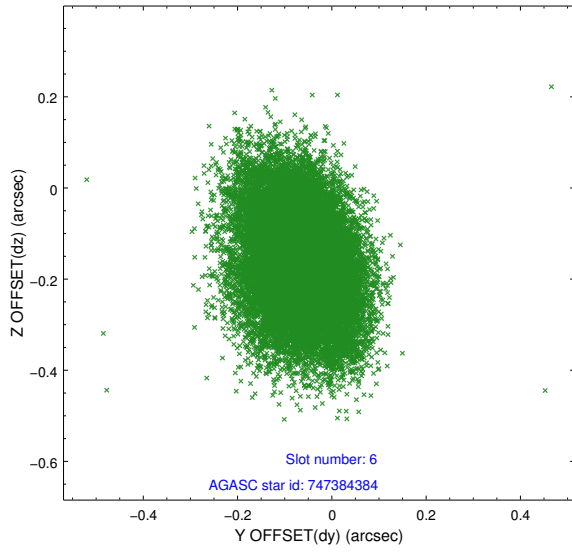
2.4.2 Slot 4



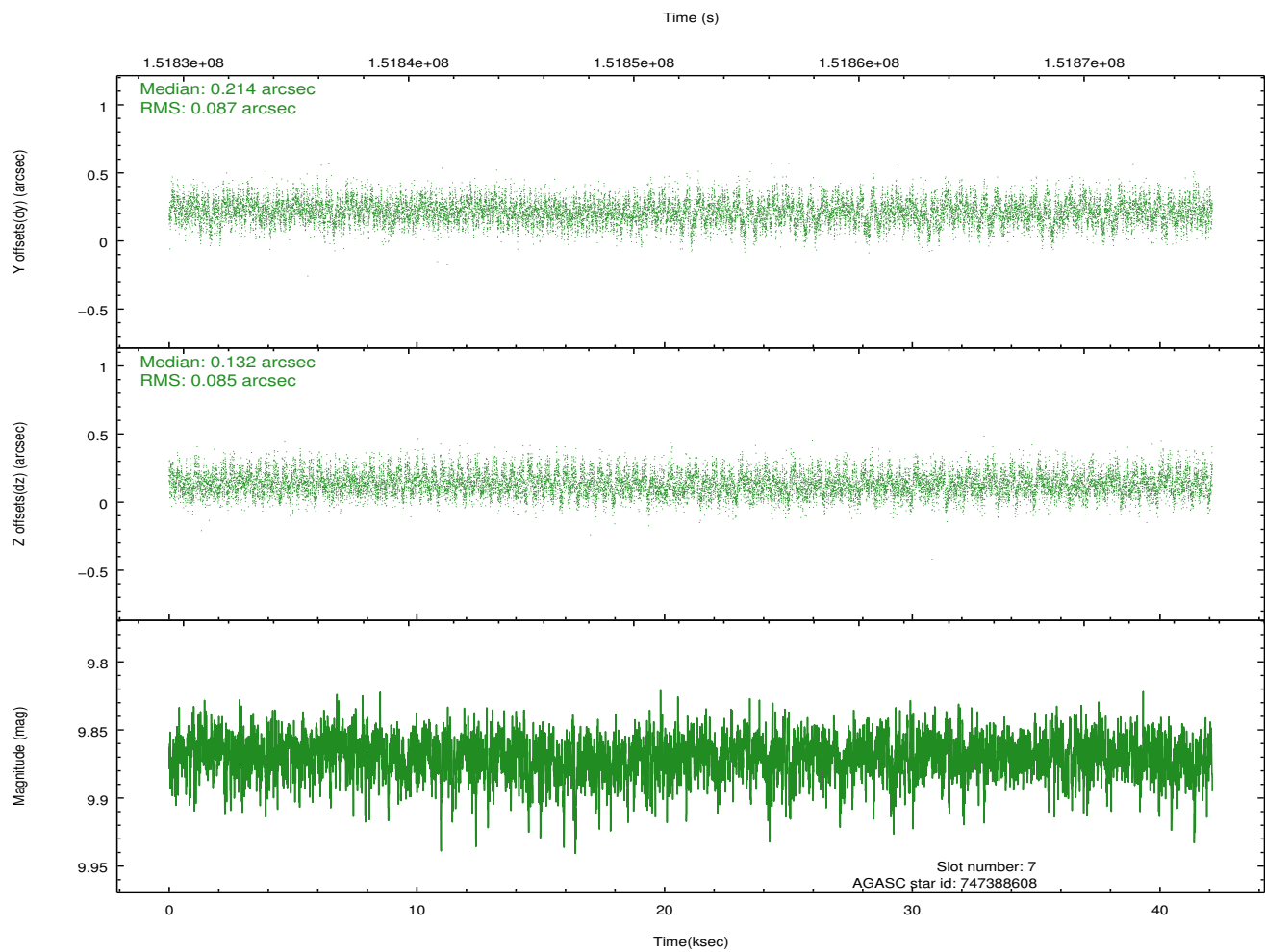
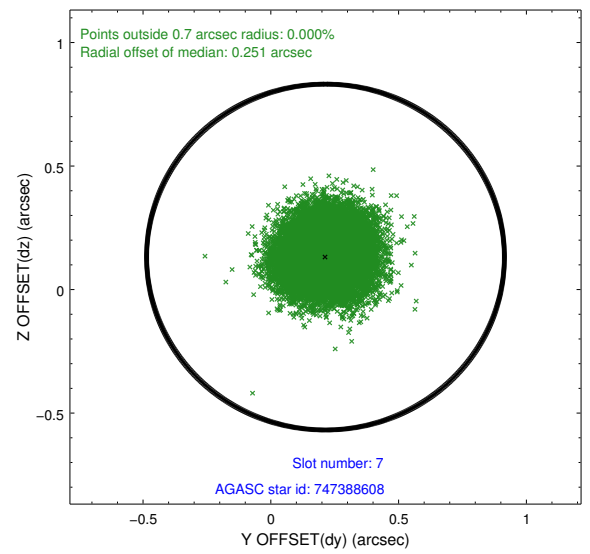
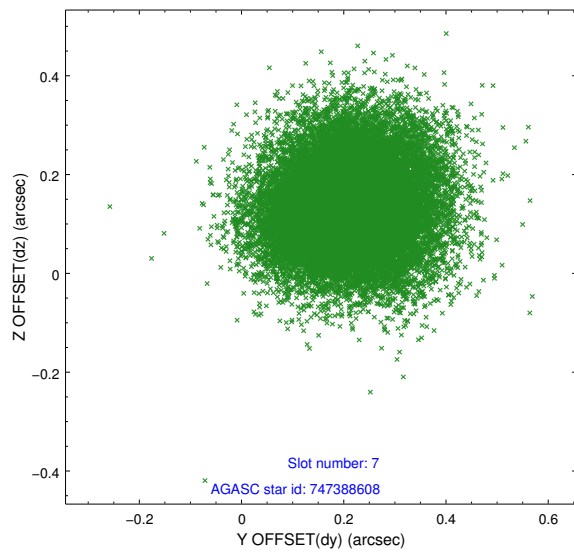
2.4.3 Slot 5



2.4.4 Slot 6

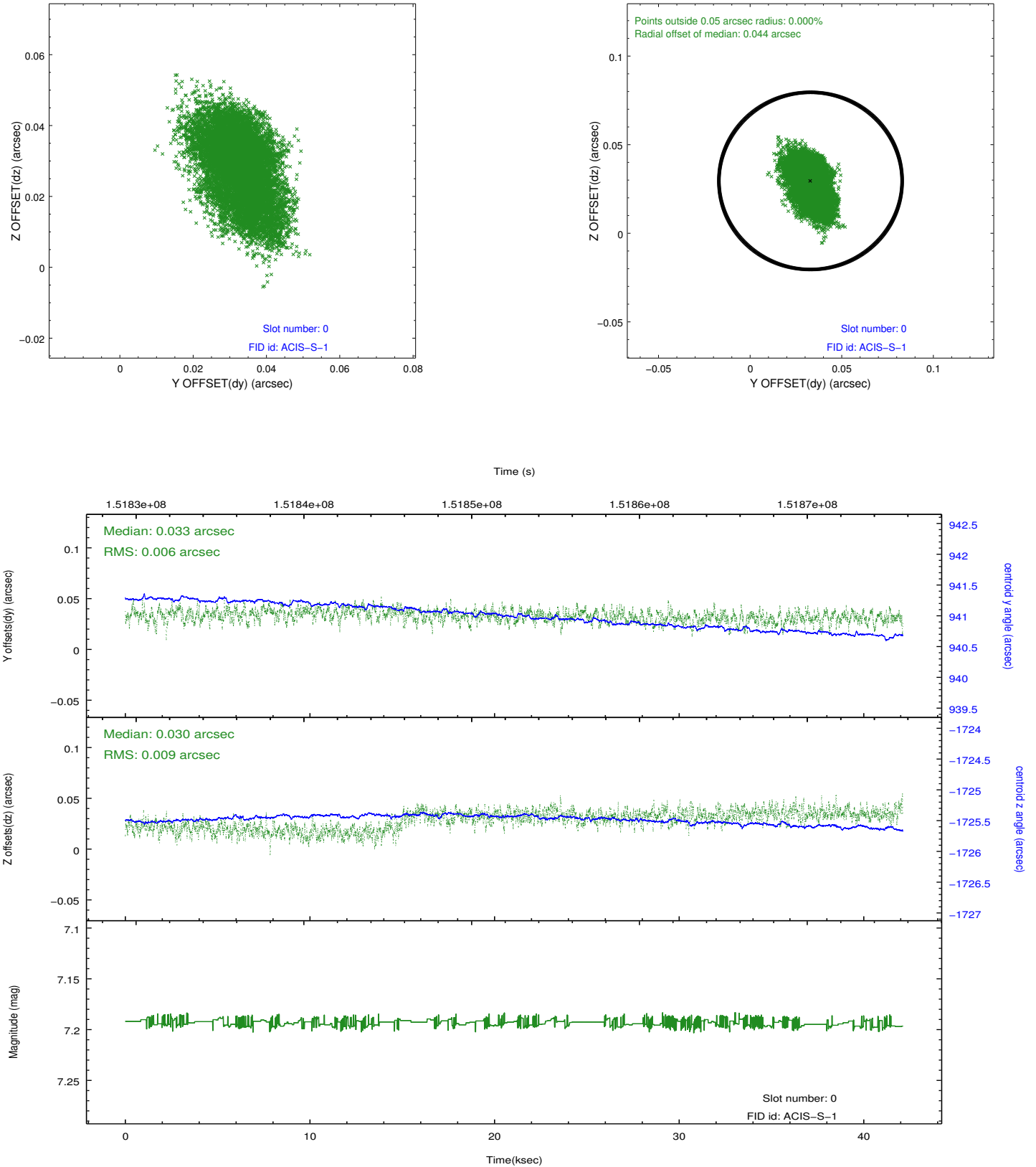


2.4.5 Slot 7

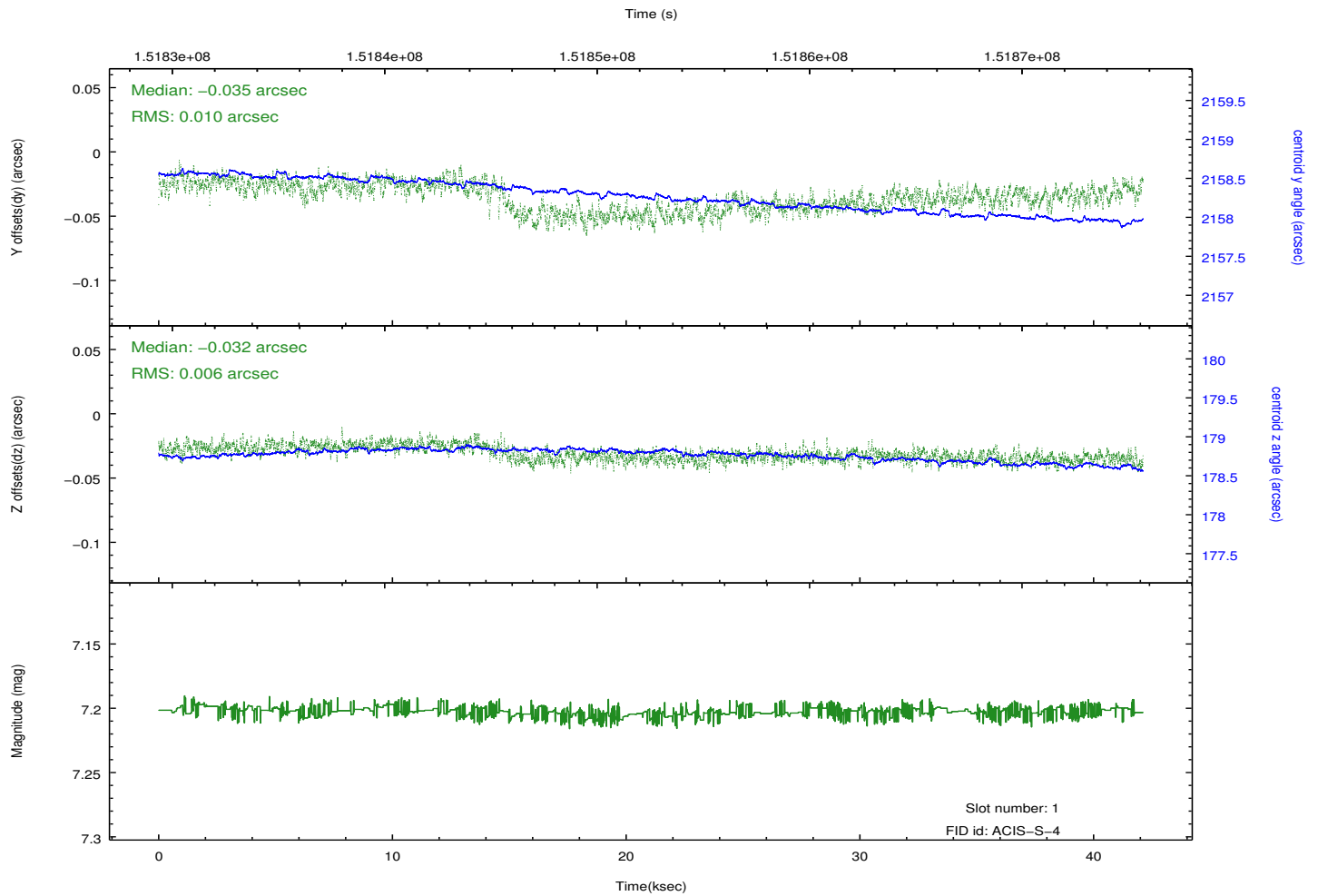
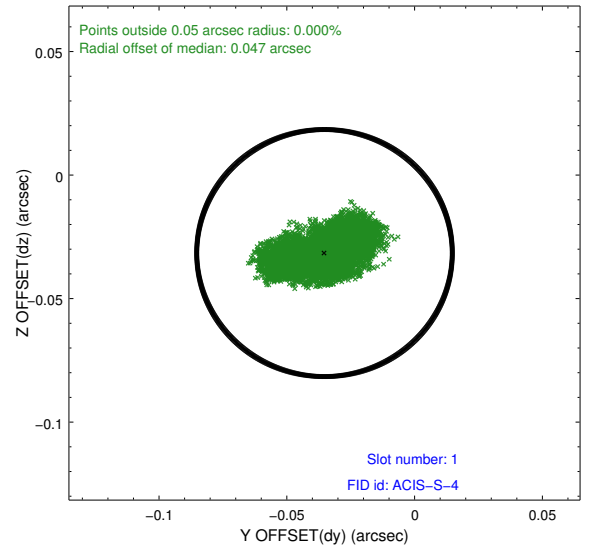
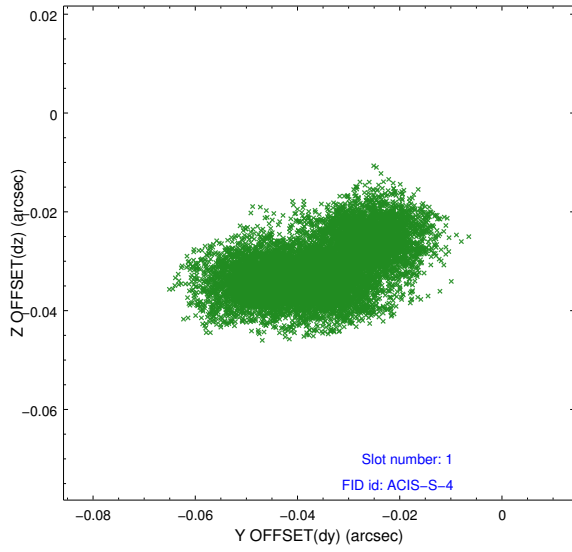


2.5 FID Slots

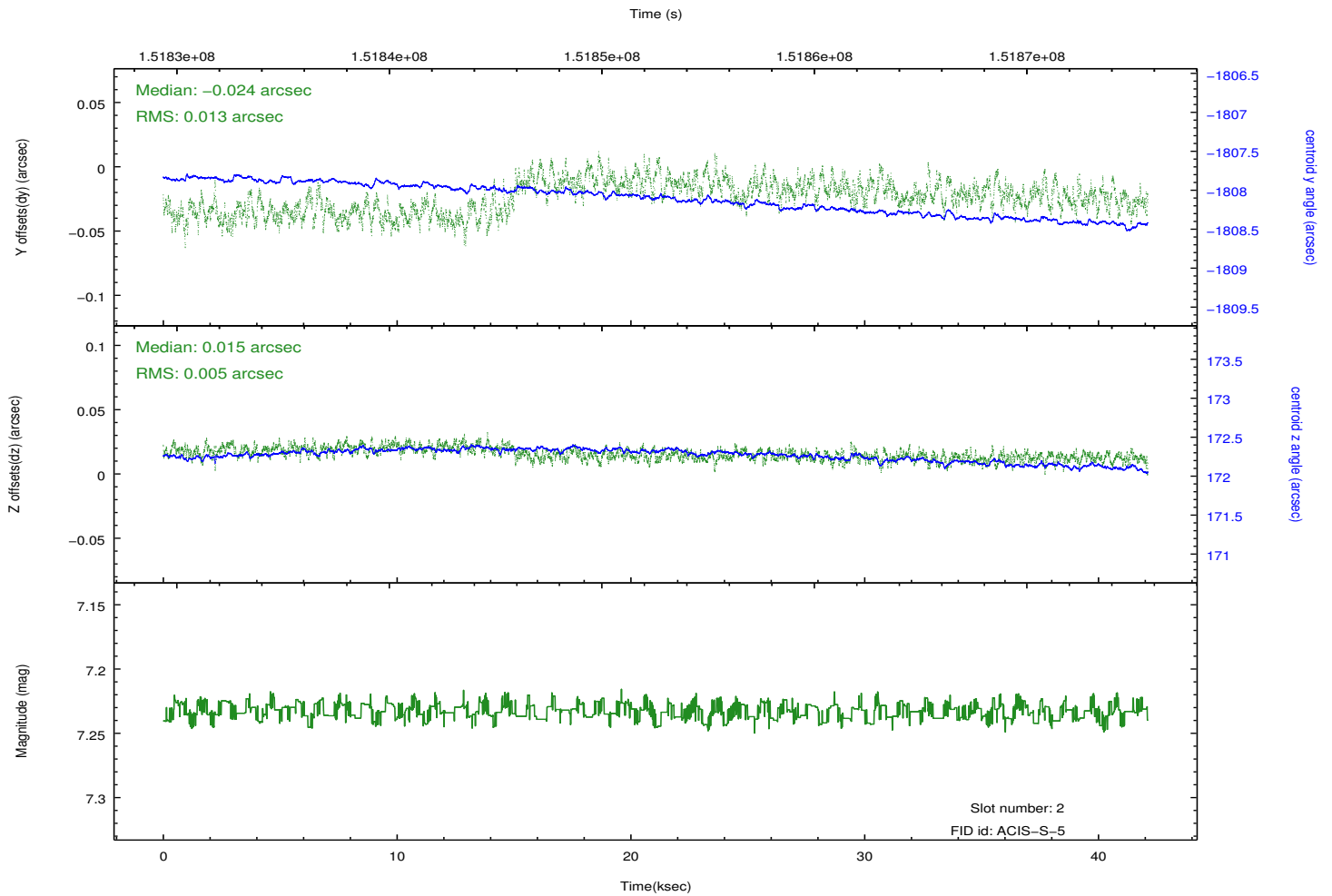
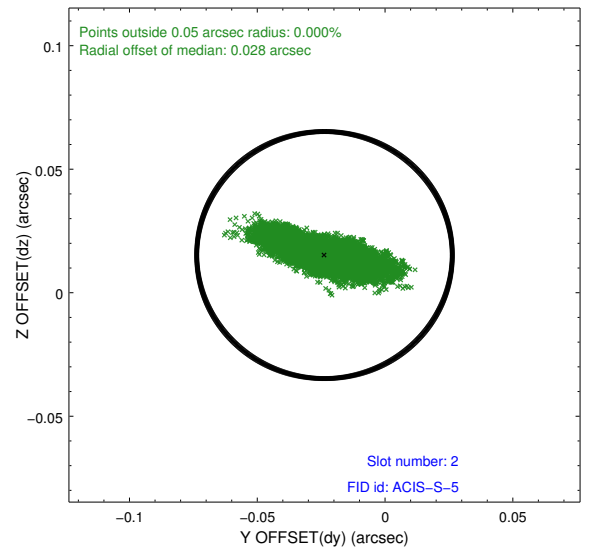
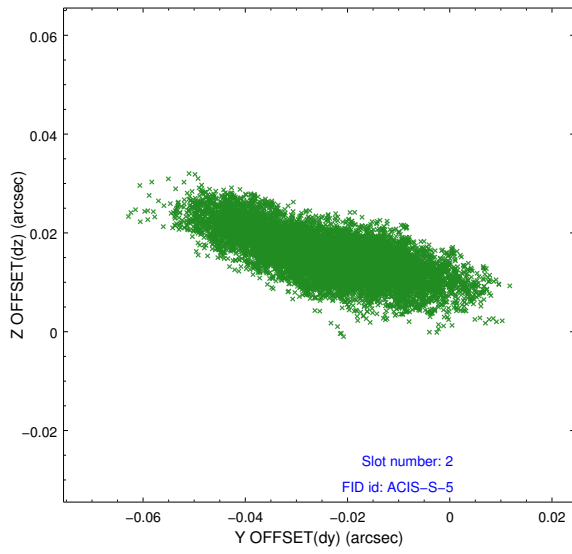
2.5.1 Slot 0



2.5.2 Slot 1



2.5.3 Slot 2



A Summary

A.1 Status

V&V Scientist	Jen Lauer
V&V Date (YYYY-MM-DD)	2012.10.25
V&V Edition	1
V&V Disposition and Status	OK
V&V Charge Time	41.363

A.2 Comments