

V&V Reference Report

L2 ASCDS Version : 8.4.5

Observation 2960 - L2 Version 3
Chandra X-Ray Center

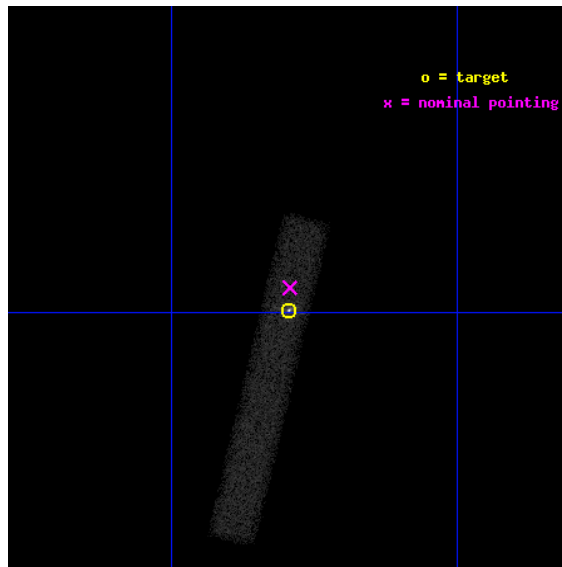
L2 Processing Date : Oct 5 2012

Contents

1	Front	2
2	OBI	3
2.1	OBI	3
2.1.1	Images	3
2.1.2	Bias	3
2.1.3	Parameters	4
2.1.4	Events	4
2.2	Compared Parameters	5
2.3	Aspect	6
2.4	Star Slots	9
2.4.1	Slot 3	9
2.4.2	Slot 4	10
2.4.3	Slot 5	11
2.4.4	Slot 6	12
2.4.5	Slot 7	13
2.5	FID Slots	14
2.5.1	Slot 0	14
2.5.2	Slot 1	15
2.5.3	Slot 2	16
A	Summary	17
A.1	Status	17
A.2	Comments	17

1 Front

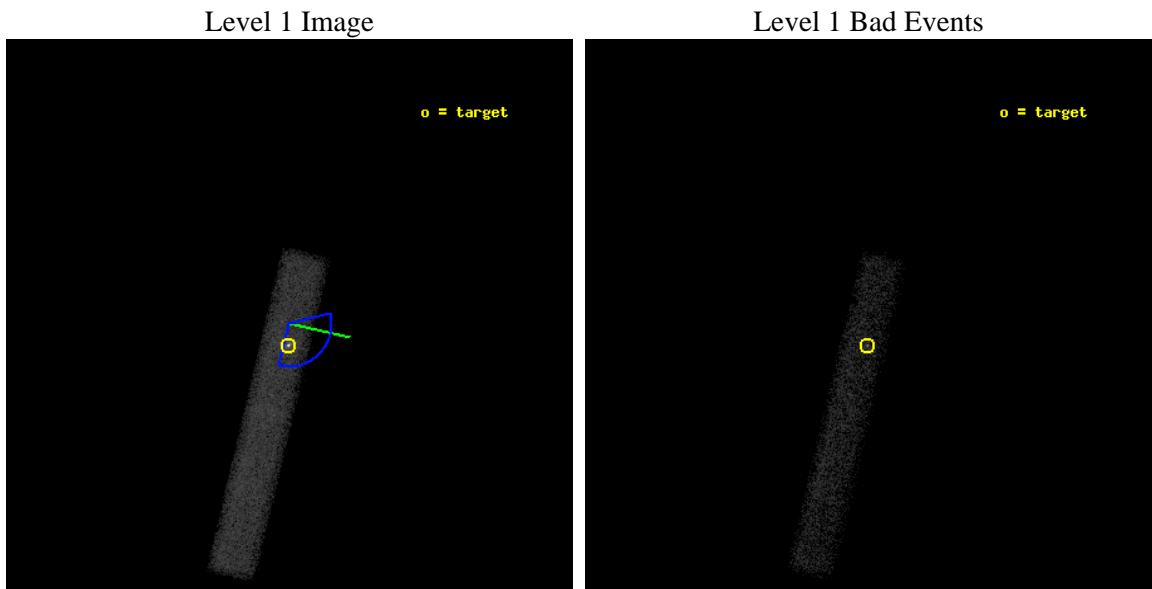
seq_num	700399	Sequence number
obs_id	2960	Observation id
title	THE PHYSICS OF X-RAY/OPTICAL JETS	Proposal title
observer	Prof. Meg Urry	Principal investigator
object	PKS2201+044	Source name
dtcycle	0	
cycle	P	events from which exps? Prim/Second/Both
ra_targ	331.07375	Observer's specified target RA [deg]
dec_targ	4.667306	Observer's specified target Dec [deg]
ra_nom	331.07318591441	Nominal RA [deg]
dec_nom	4.6770063208752	Nominal Dec [deg]
roll_nom	103.44793178514	Nominal Roll [deg]
revision	3	Processing version of data
ontime	40400.400601983	Sum of GTIs [s]
livetime	36641.030838004	Livetime [s]
ontime7	40400.400601983	Sum of GTIs [s]
l2events	32448	Number of level 2 events



2 OBI

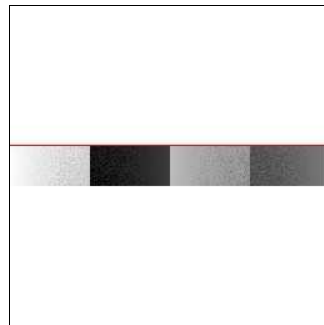
2.1 OBI

2.1.1 Images



2.1.2 Bias

Chip 7



2.1.3 Parameters

obi_num	1	Obi number	sched_exp_time	39900.000000	[s] Scheduled observation exposure time
ascdsver	8.4.5	Processing system revision	ontime	40400.400601983	Sum of GTIs [s]
caldbver	4.5.2	 	ontime7	40400.400601983	Sum of GTIs [s]
date	2012-10-05T17:55:46	Date and time of file creation	l1events	57677	Number of level 1 events
revision	3	Processing version of data			

2.1.4 Events

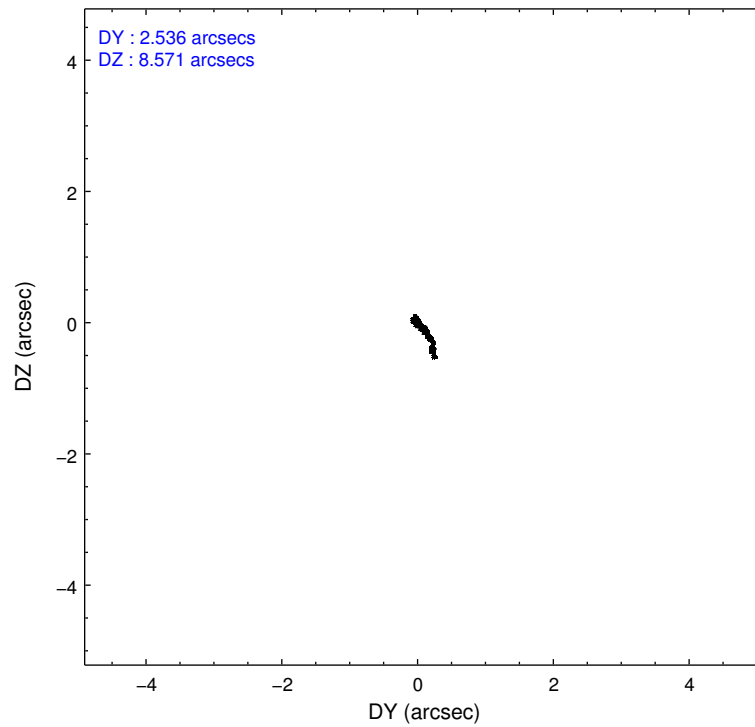
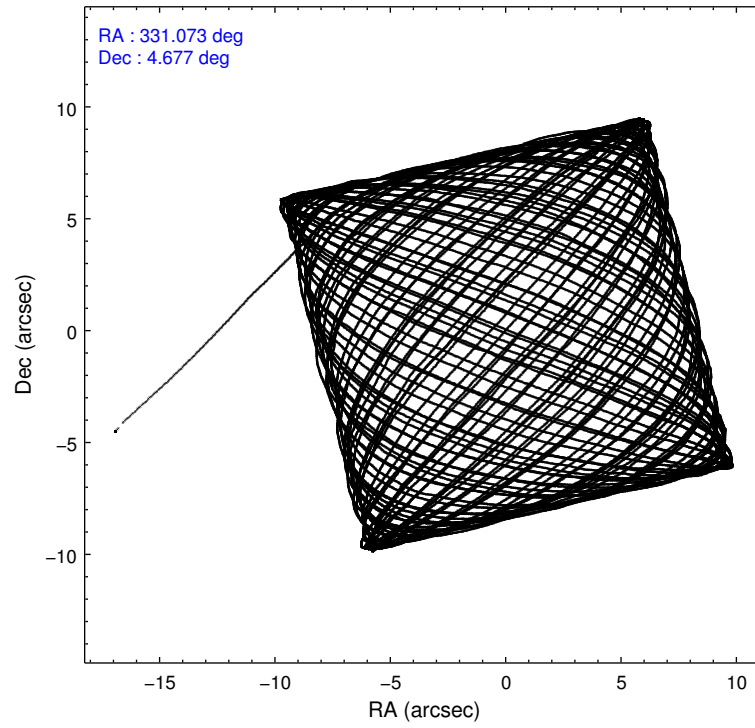
	ccd 7
level 1 events	57677
rejected events	24379
rejected %	42%

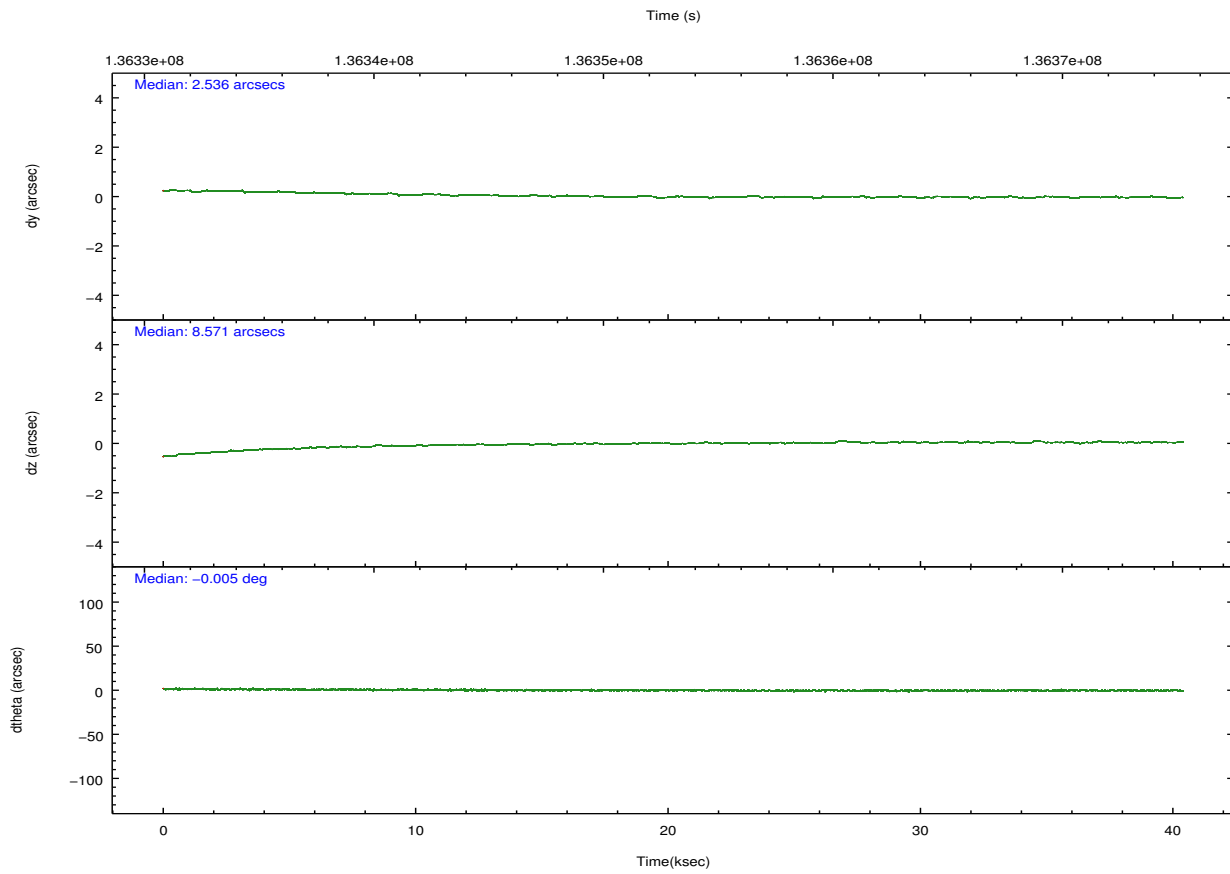
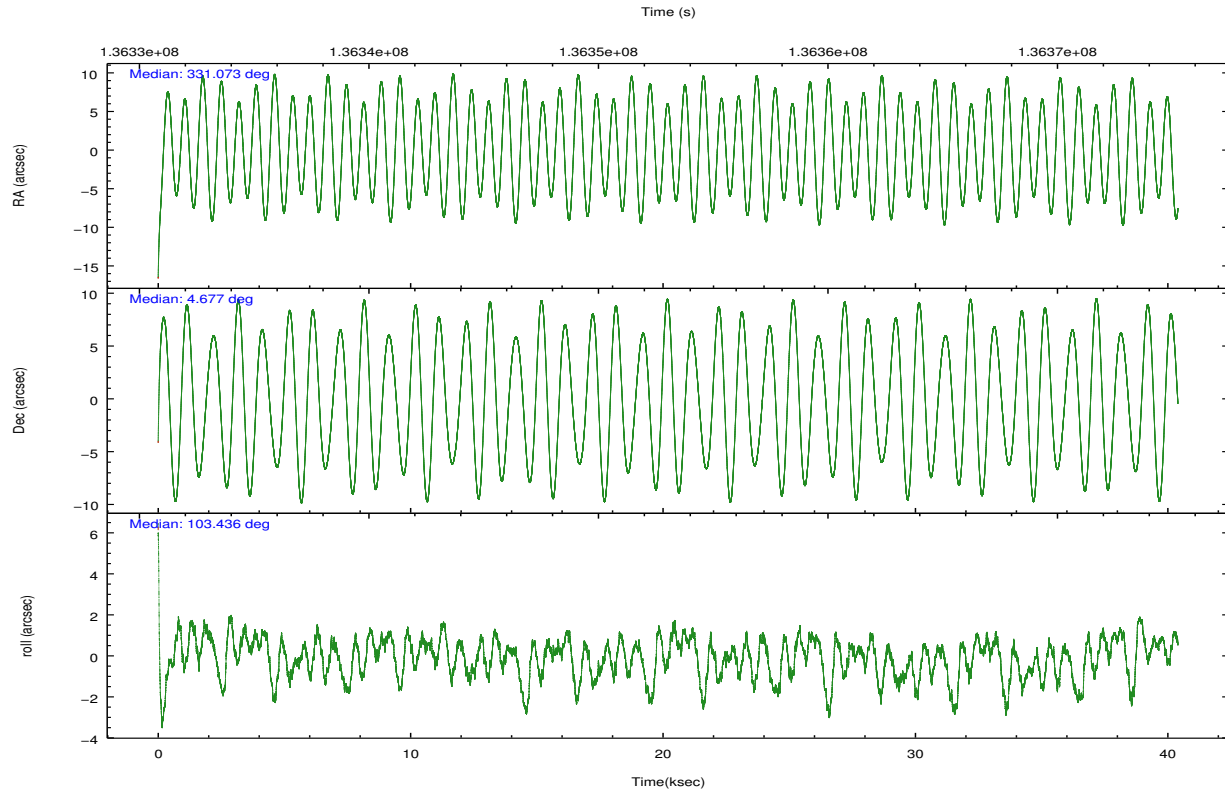
	ccd 7
grade 0 events	6117
	10%
grade 1 events	74
	0%
grade 2 events	7052
	12%
grade 3 events	4198
	7%
grade 4 events	4194
	7%
grade 5 events	4206
	7%
grade 6 events	11964
	20%
grade 7 events	19872
	34%

2.2 Compared Parameters

Parameter	Planned	Actual	Parameter	Planned	Actual
Instrument	ACIS	ACIS	Obspar format version number	7	7
Detector	ACIS-7	ACIS-7	Obspar file type	PREDICTED	ACTUAL
Grating	NONE	NONE	Obspar update status	NONE	UPDATED
Data mode	FAINT	FAINT	Number of optional ACIS chips dropped	0	0
Observation mode	POINTING	POINTING	On-chip summing requested	N	N
[deg] Pointing RA	331.092238	331.0731859144095	Subarray requested	CUSTOM	1/8
[deg] Pointing Dec	4.657443	4.677006320875161	Subarray start row	449	449
[deg] Pointing Roll	103.289754	103.4479317851425	Subarray row count	128	128
[deg] Roll angle	135.000000	135.000000	Alternating exposures requested	N	N
[deg] Roll tolerance	59.000000	59.000000	[s] Primary exposure time	0.000000	0.4
Roll constraint allows 180D rotation	N	N			
[mm] SIM focus pos	-0.684267	-0.6828225247311905			
[mm] SIM defocus	0	0.001444936568705701			
[mm] SIM translation stage pos	-190.132523	-190.1400660498719			
[mm] SIM translation stage offset	0	0.00754346686406393			
[s] Observation start time (MET)	136333330.184000	136332202.9828			
Observation start date	2002-04-27T22:21:06	2002-04-27T22:03:22			
[s] Observation end time (MET)	136373230.184000	136374084.4845			
Observation end date	2002-04-28T09:26:06	2002-04-28T09:41:24			
Read mode	TIMED	TIMED			

2.3 Aspect



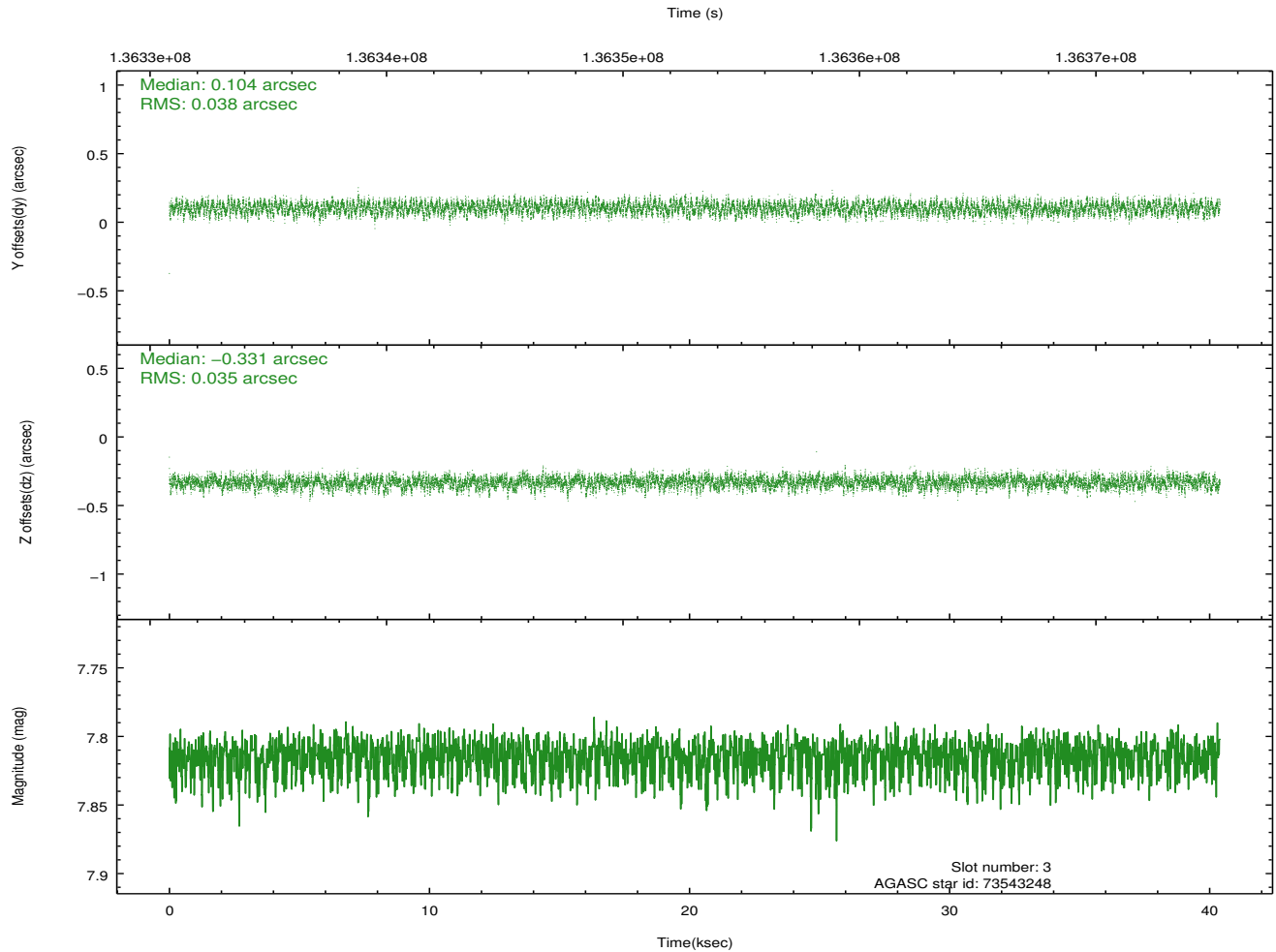
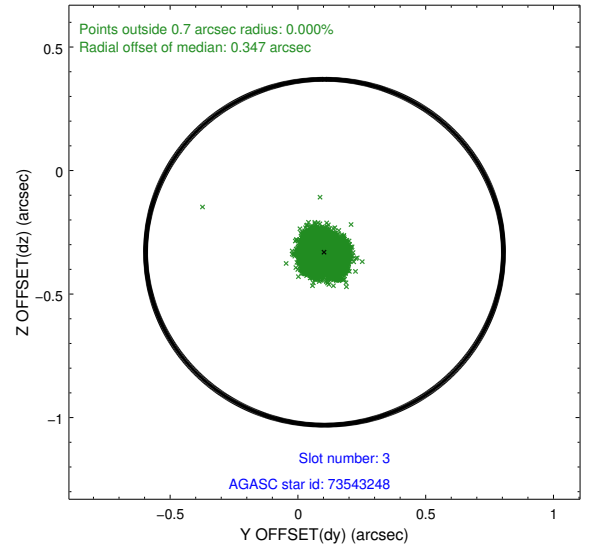
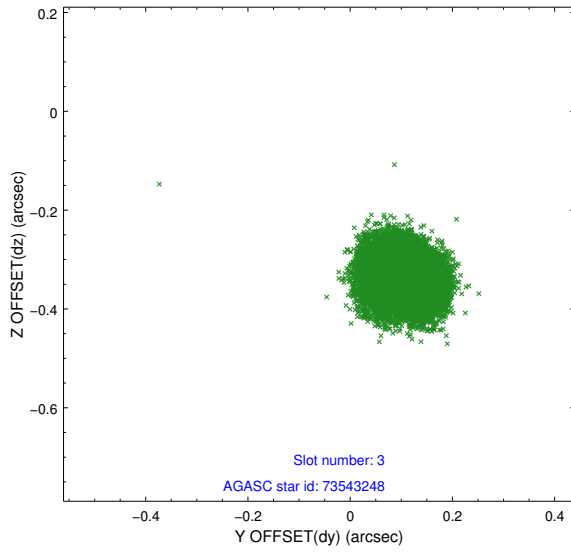


Slot Statistics

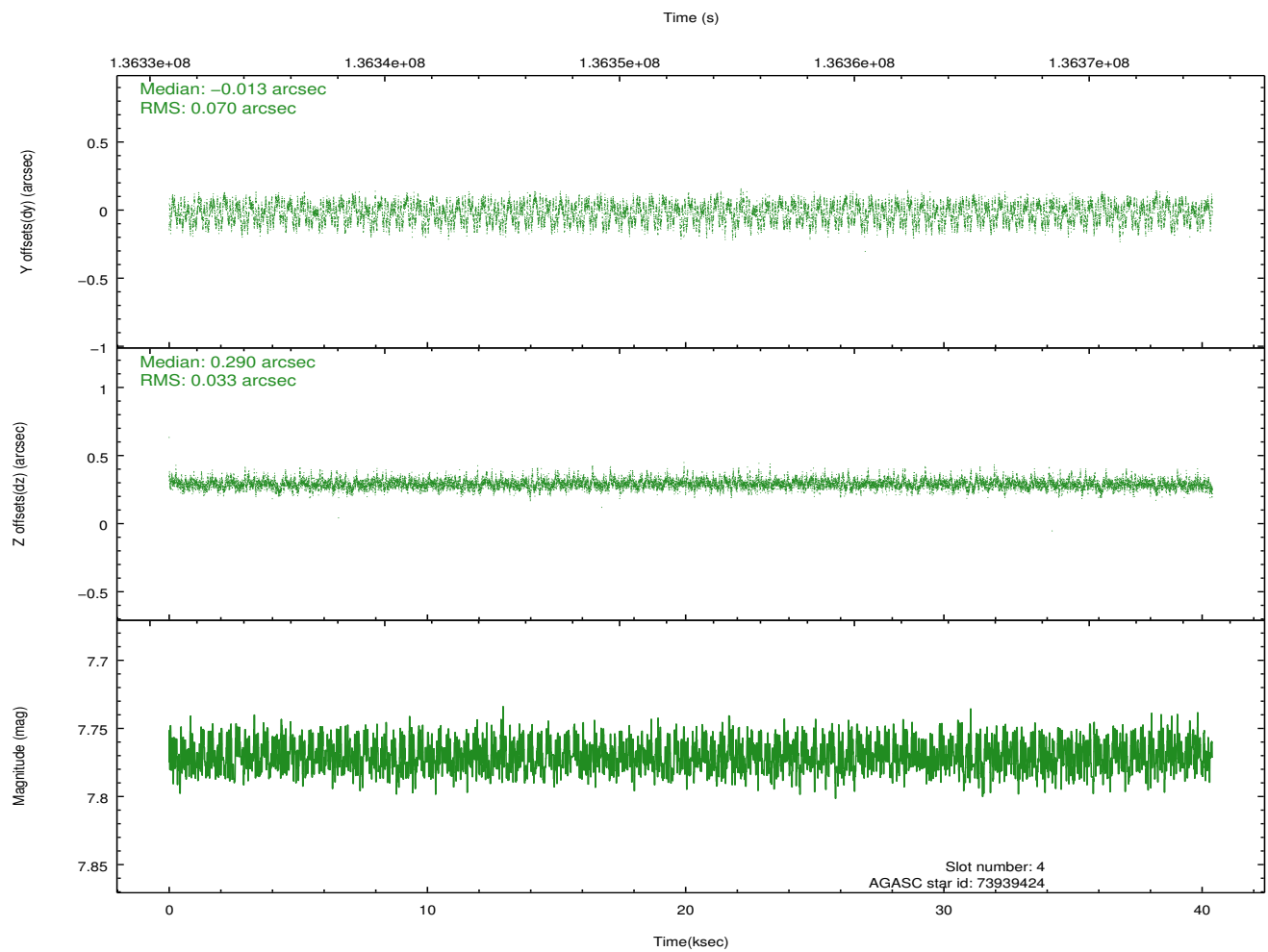
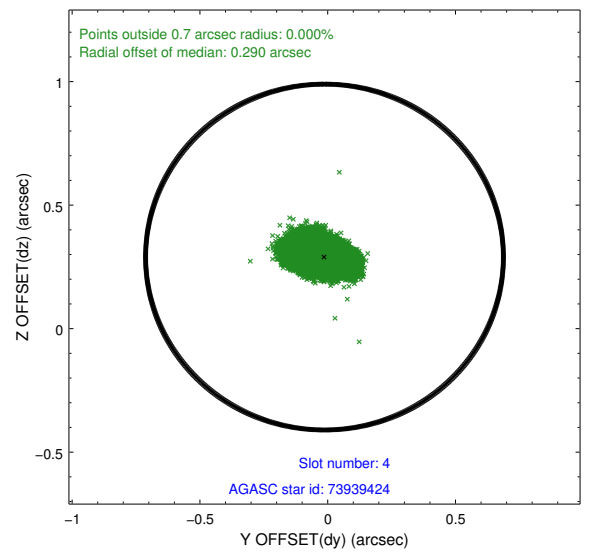
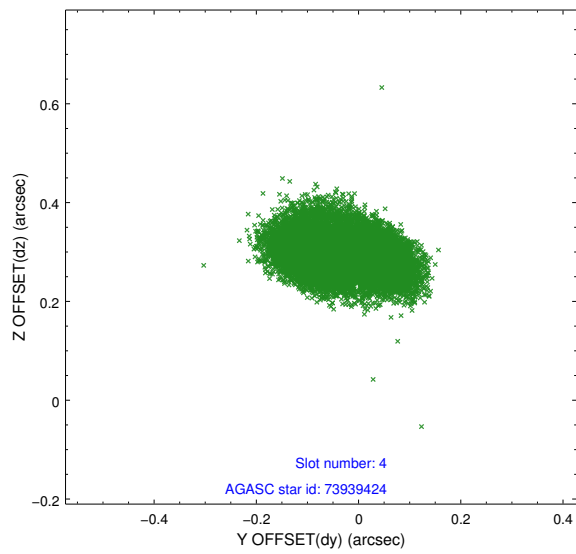
slot	status	id	mag	n_pts	med_dy	med_dz	dr1	dr2	ra	dec	mean_y	mean_z
0	FID	ACIS-S-1	7.19	9855	0.017	0.011	0.008	0.021	0.000000	0.000000	940.84	-1725.35
1	FID	ACIS-S-5	7.24	9855	0.009	0.038	0.008	0.015	0.000000	0.000000	-1808.14	172.24
2	FID	ACIS-S-6	7.35	9852	-0.047	-0.036	0.008	0.014	0.000000	0.000000	406.33	816.12
3	GUIDE	73543248	7.81	19704	0.104	-0.331	0.056	0.088	330.510717	4.469173	-180.02	2186.03
4	GUIDE	73939424	7.77	19699	-0.013	0.290	0.083	0.132	331.639799	5.194703	1431.70	-2355.23
5	GUIDE	73540072	8.53	19695	0.240	0.011	0.058	0.095	330.897807	4.391114	-773.21	898.86
6	GUIDE	73938384	8.91	19705	-0.225	0.296	0.071	0.113	331.418276	5.252209	1814.83	-1629.62
7	GUIDE	73536824	9.00	19696	-0.103	-0.268	0.089	0.137	330.419441	4.883510	1346.89	2160.82

2.4 Star Slots

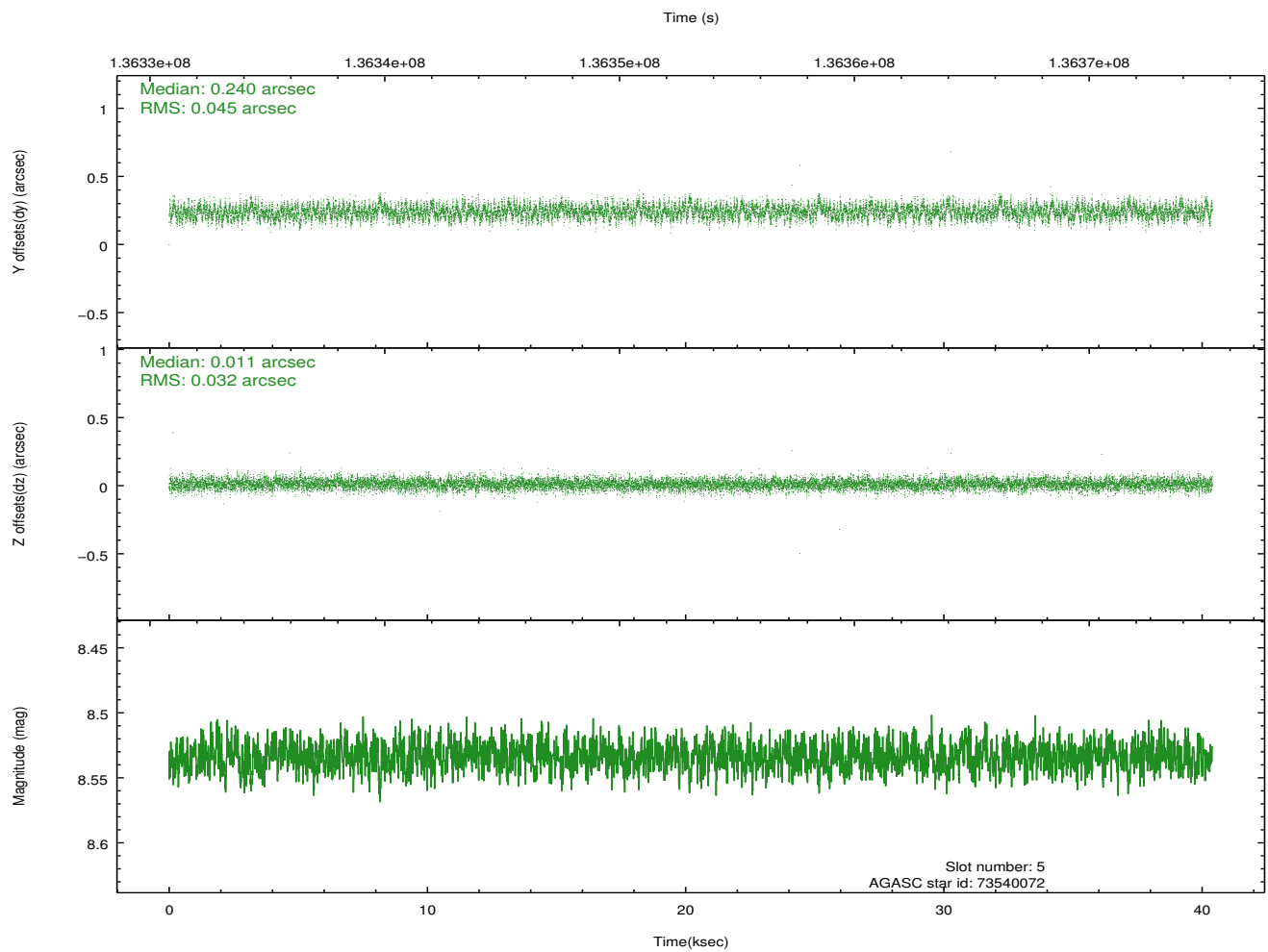
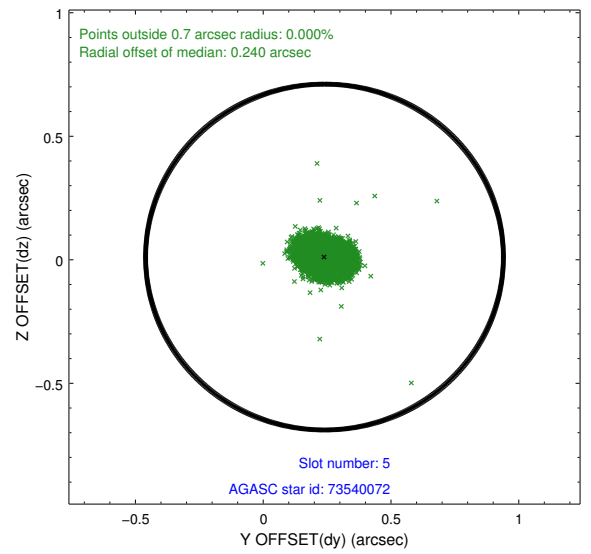
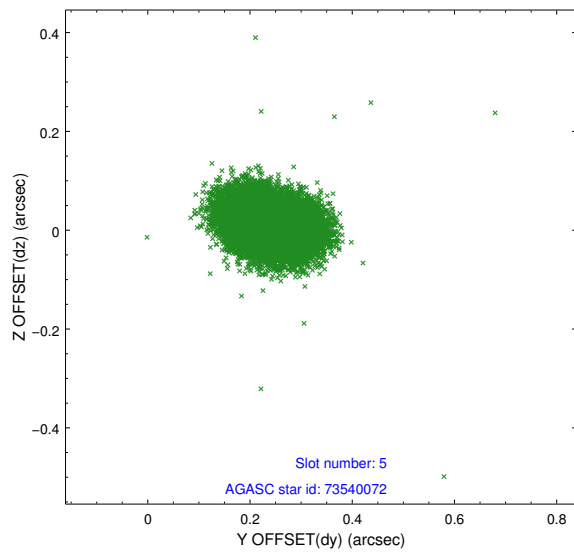
2.4.1 Slot 3



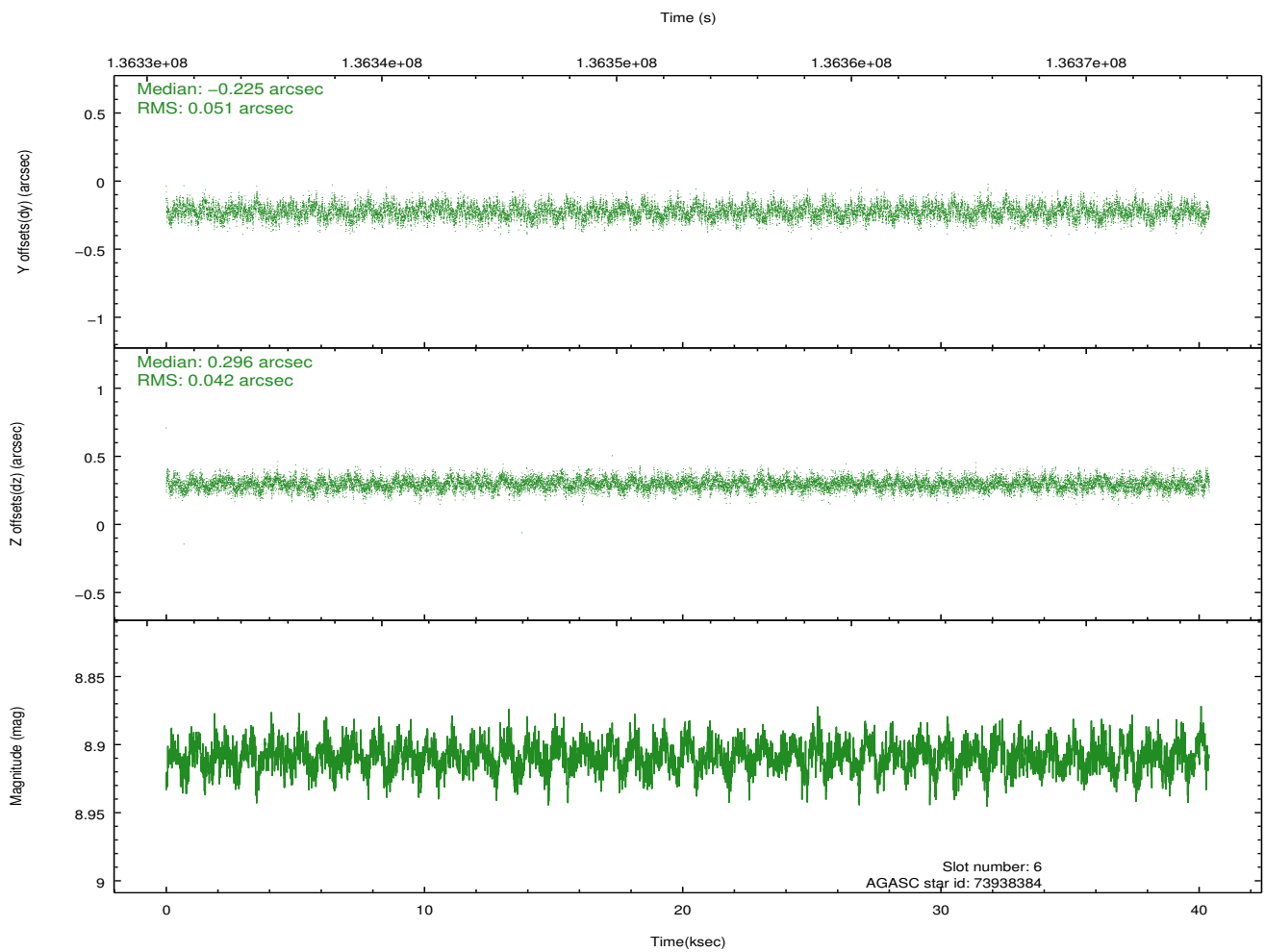
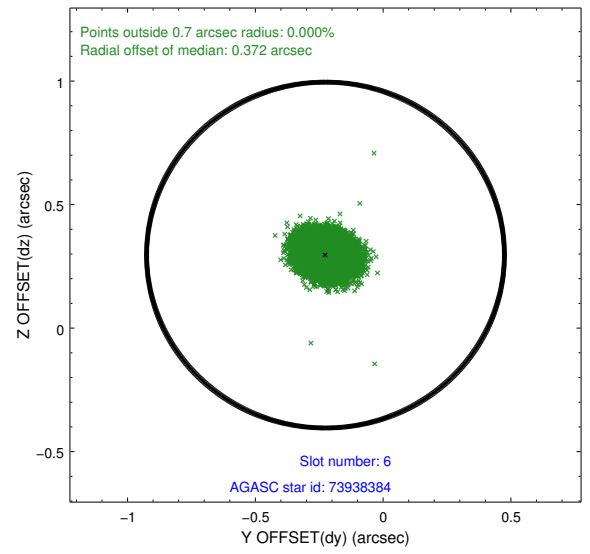
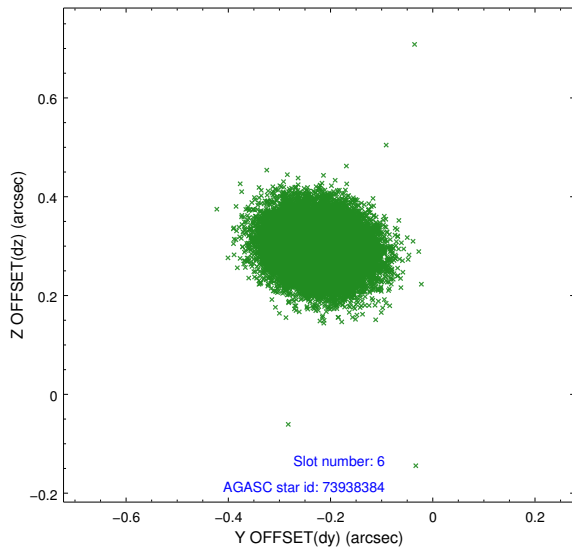
2.4.2 Slot 4



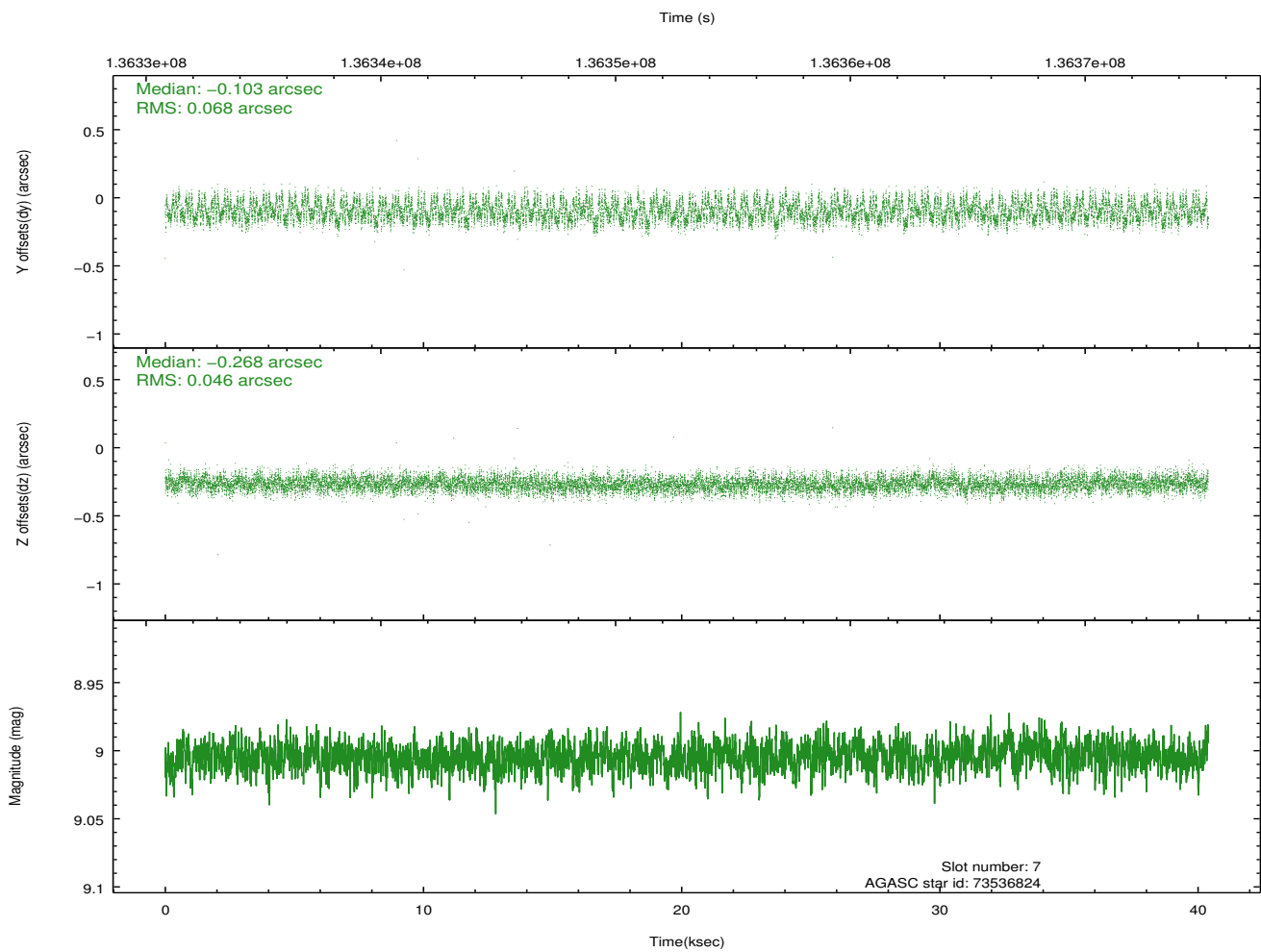
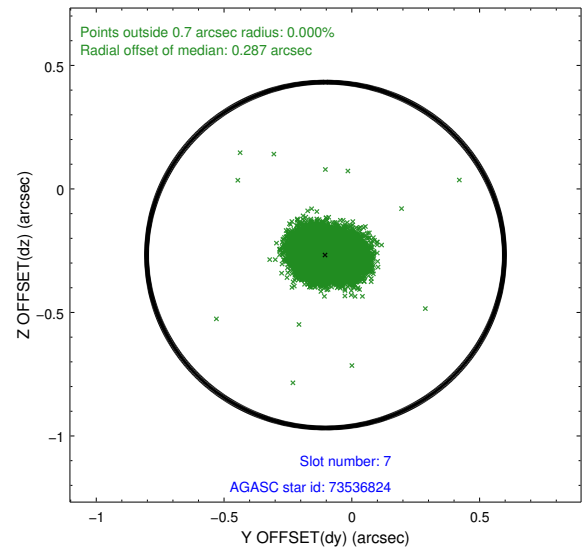
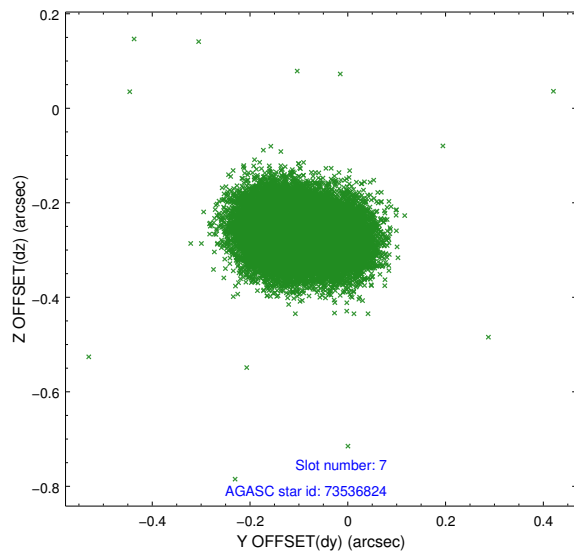
2.4.3 Slot 5



2.4.4 Slot 6

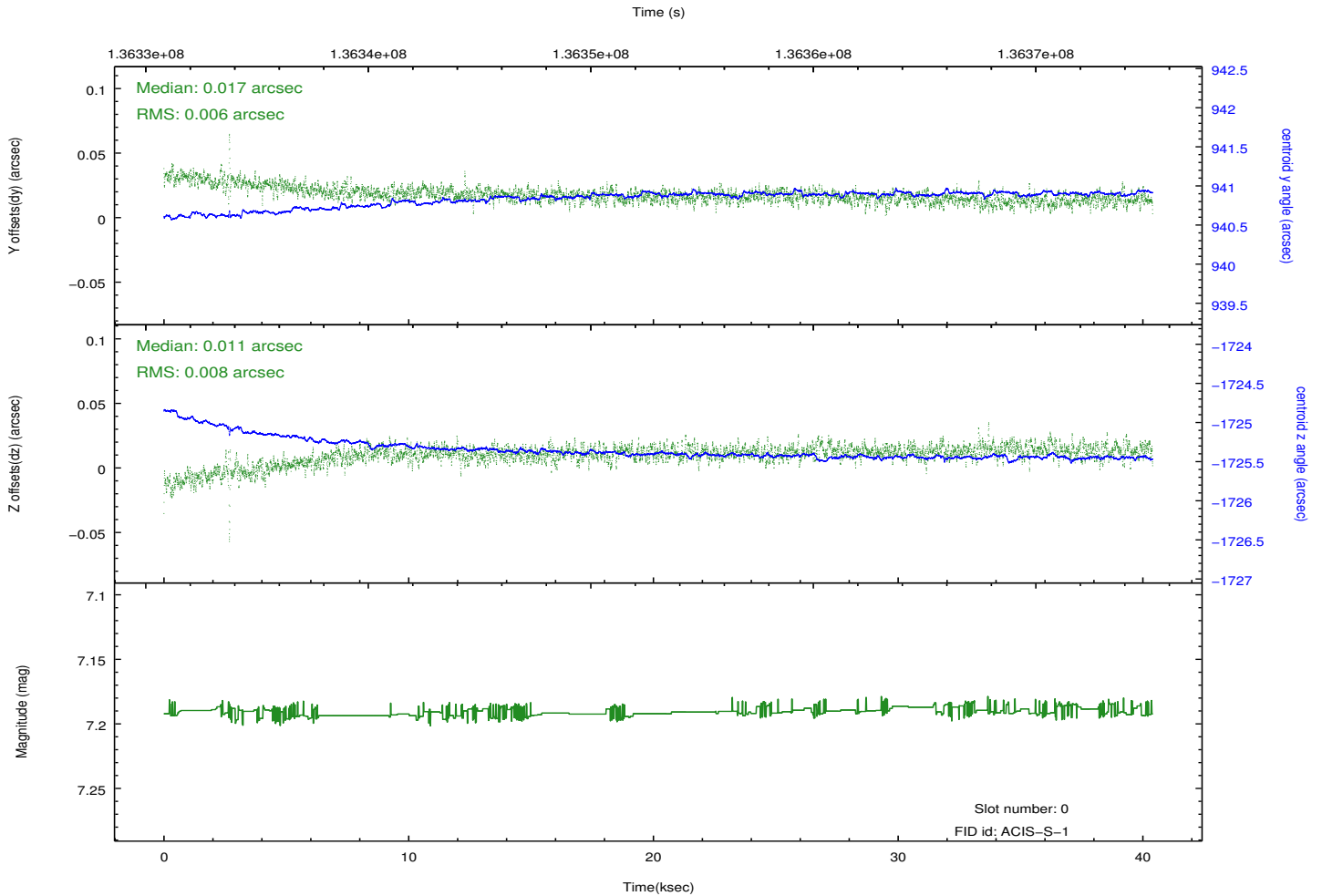
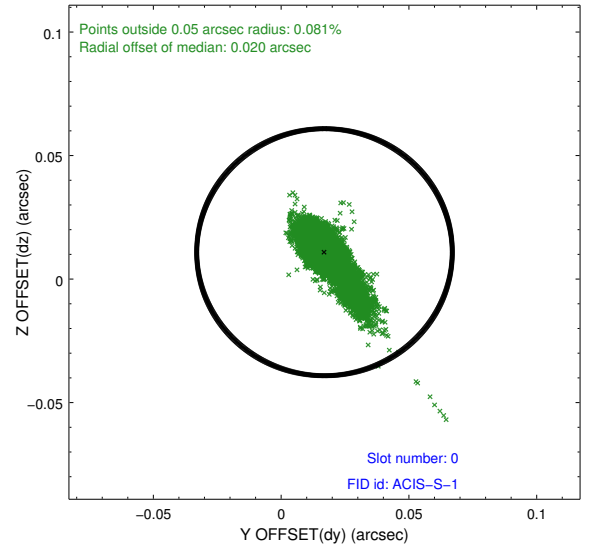
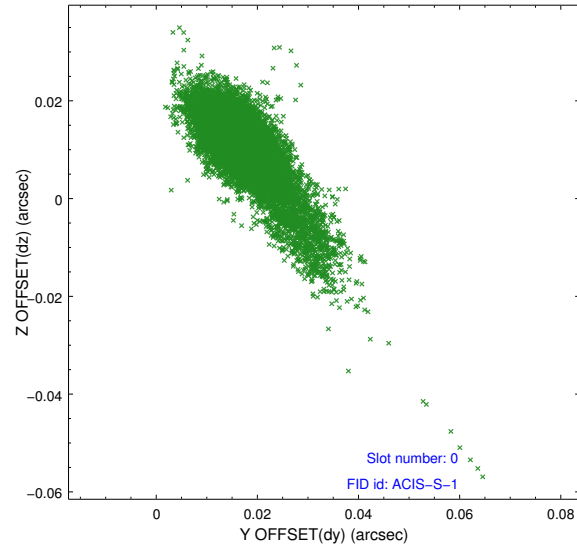


2.4.5 Slot 7

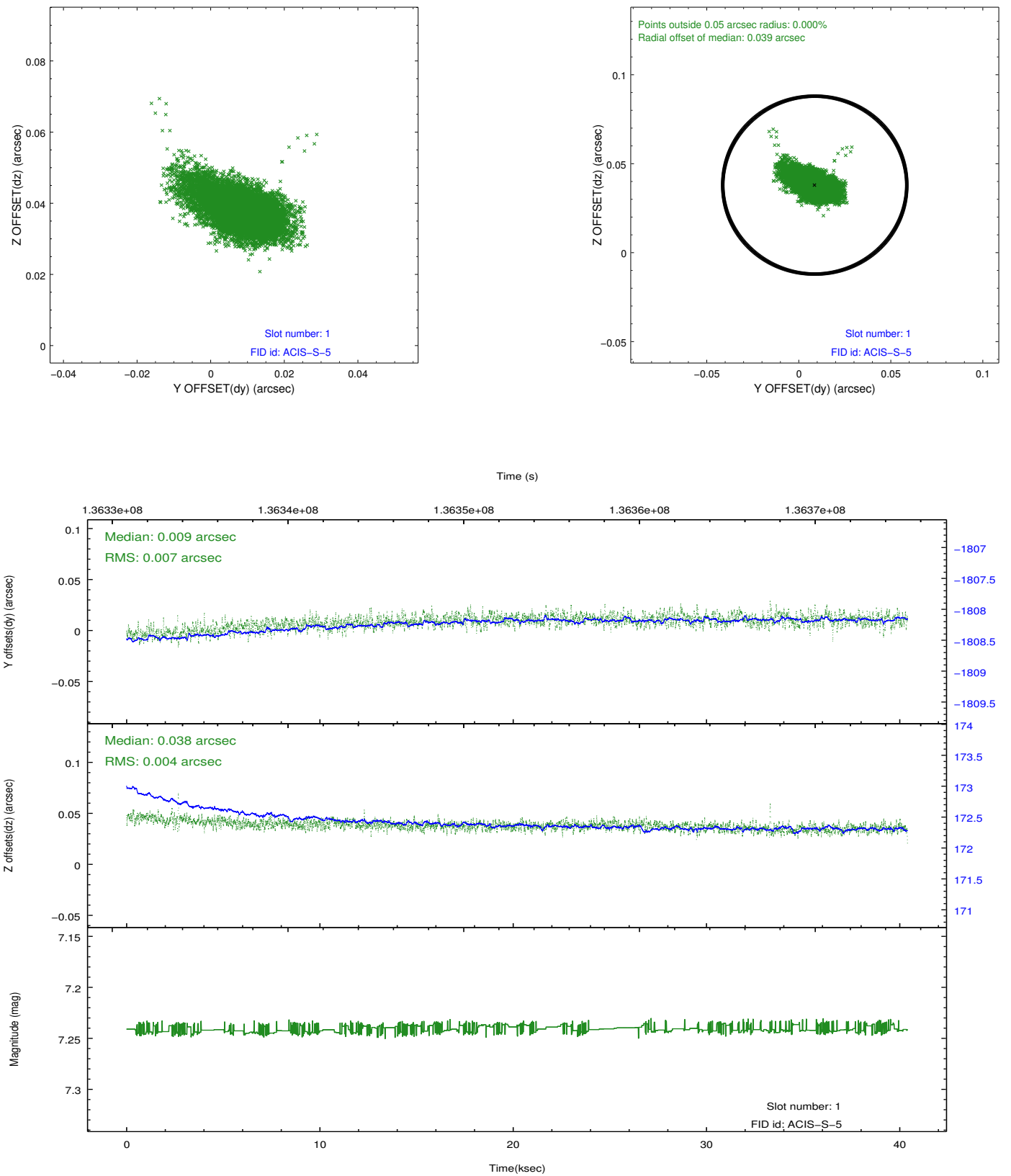


2.5 FID Slots

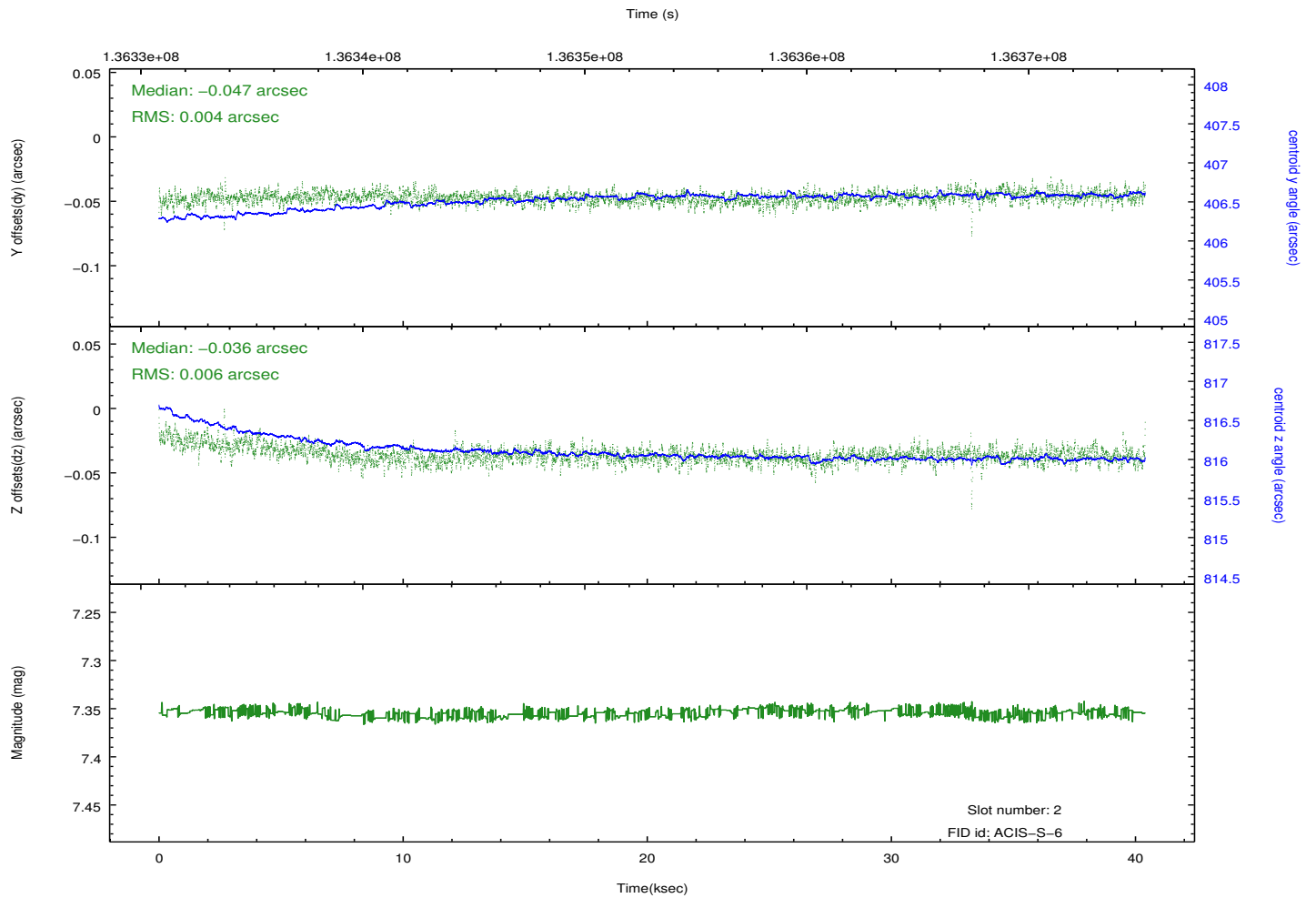
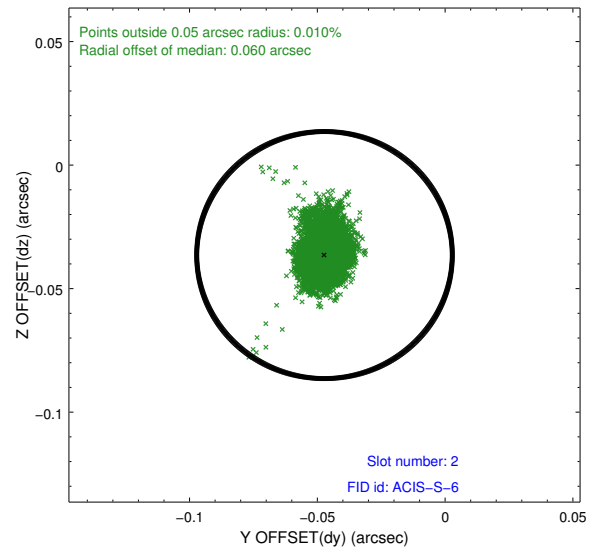
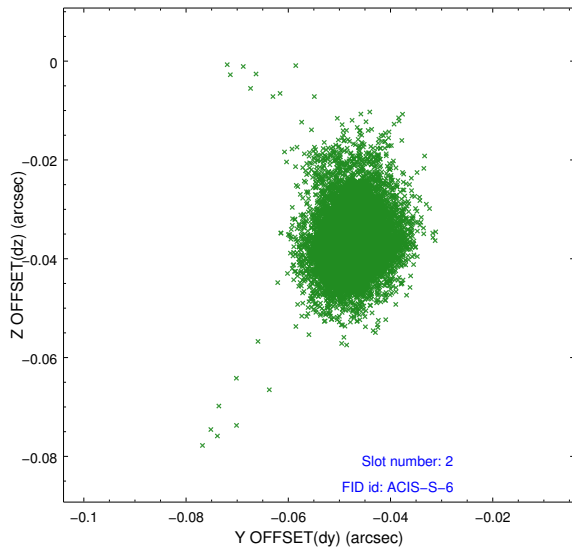
2.5.1 Slot 0



2.5.2 Slot 1



2.5.3 Slot 2



A Summary

A.1 Status

V&V Scientist	Beth Sundheim
V&V Date (YYYY-MM-DD)	2012.10.12
V&V Edition	1
V&V Disposition and Status	OK
V&V Charge Time	40.4

A.2 Comments

Joint proposal with HST.

Roll preference met.