

V&V Reference Report

L2 ASCDS Version : 8.4.5

Observation 3090 - L2 Version 3
Chandra X-Ray Center

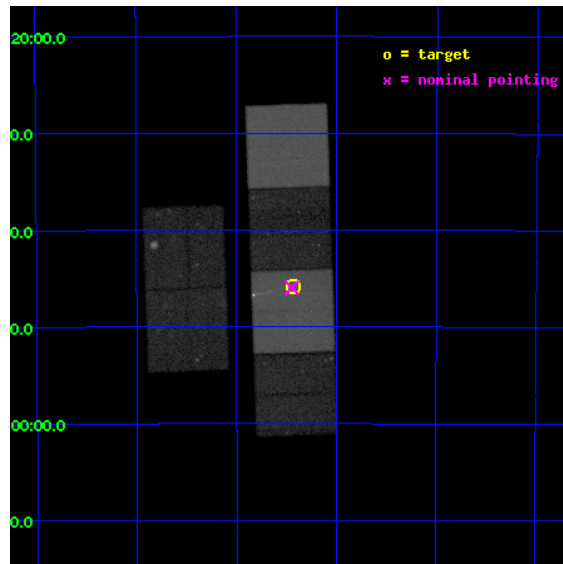
L2 Processing Date : Oct 14 2012

Contents

1	Front	2
2	OBI	3
2.1	OBI	3
2.1.1	Images	3
2.1.2	Bias	3
2.1.3	Parameters	4
2.1.4	Events	4
2.2	Compared Parameters	5
2.3	Aspect	6
2.4	Star Slots	9
2.4.1	Slot 3	9
2.4.2	Slot 4	10
2.4.3	Slot 5	11
2.4.4	Slot 6	12
2.4.5	Slot 7	13
2.5	FID Slots	14
2.5.1	Slot 0	14
2.5.2	Slot 1	15
2.5.3	Slot 2	16
A	Summary	17
A.1	Status	17
A.2	Comments	17

1 Front

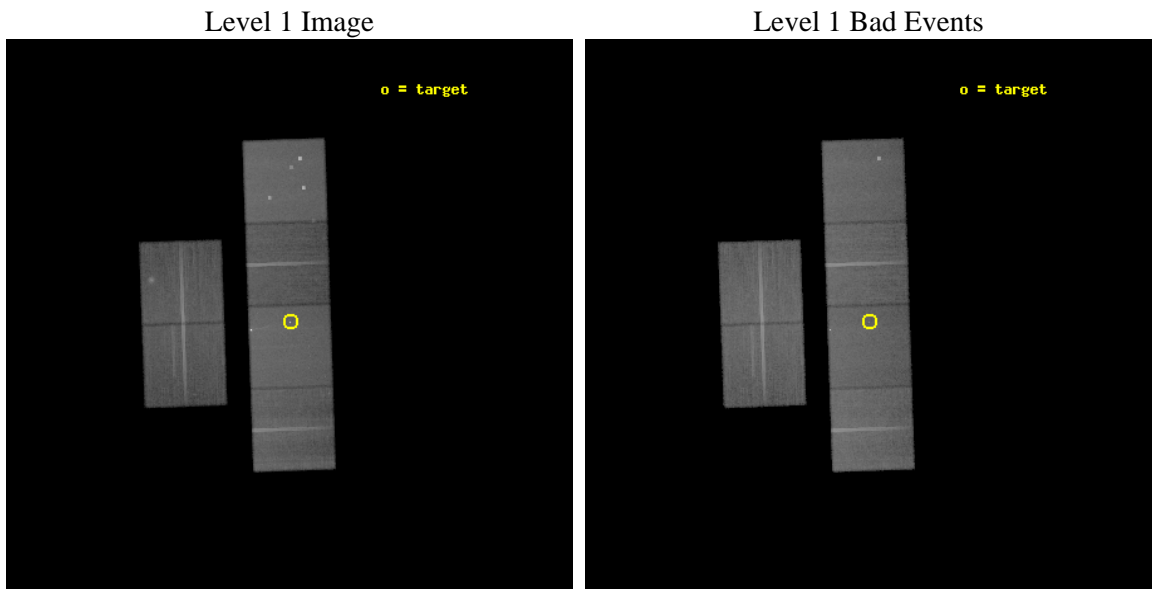
seq_num	700529	Sequence number
obs_id	3090	Observation id
title	THE POWERFUL RADIO GALAXY PICTOR A	Proposal title
observer	Professor Andrew Wilson	Principal investigator
object	PICTOR A - WEST	Source name
dtycle	0	
cycle	P	events from which exps? Prim/Second/Both
ra_targ	79.859167	Observer's specified target RA [deg]
dec_targ	-45.764861	Observer's specified target Dec [deg]
ra_nom	79.861500456411	Nominal RA [deg]
dec_nom	-45.766429573328	Nominal Dec [deg]
roll_nom	88.058299136695	Nominal Roll [deg]
revision	3	Processing version of data
ontime	46956.75886479	Sum of GTIs [s]
lvetime	46362.164110079	Livetime [s]
ontime2	46953.517864615	Sum of GTIs [s]
ontime3	46959.99982506	Sum of GTIs [s]
ontime5	46959.99982506	Sum of GTIs [s]
ontime6	46959.99982506	Sum of GTIs [s]
ontime7	46956.75886479	Sum of GTIs [s]
ontime8	46959.99982506	Sum of GTIs [s]
l2events	527754	Number of level 2 events



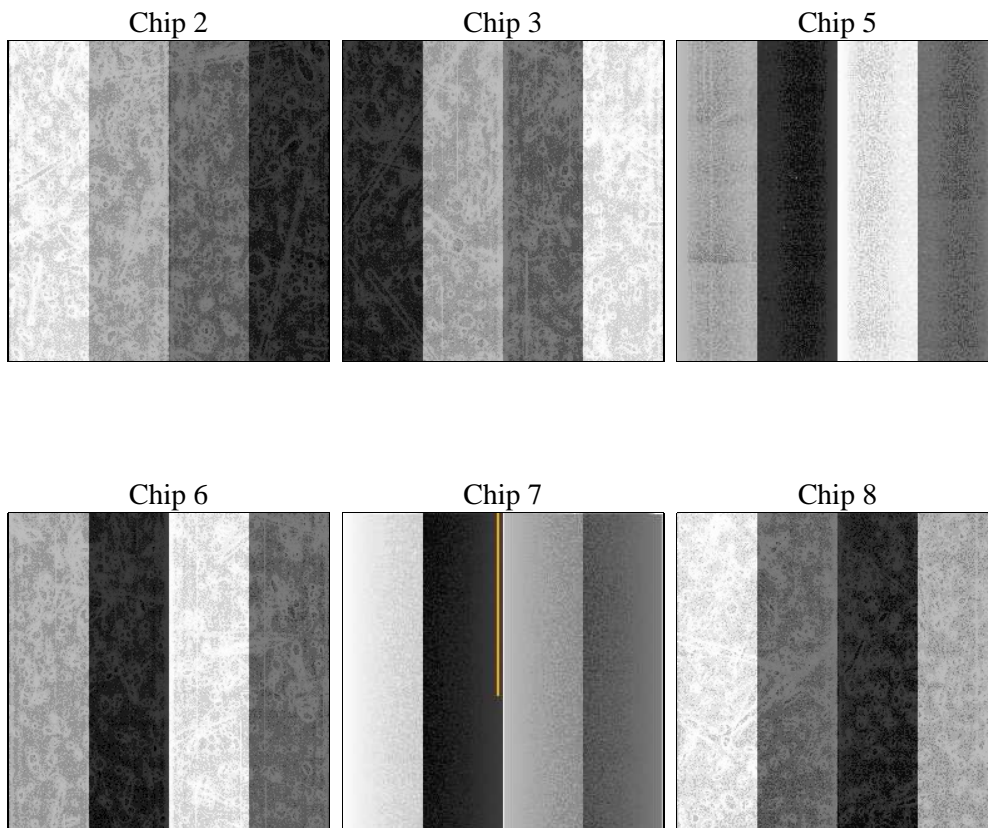
2 OBI

2.1 OBI

2.1.1 Images



2.1.2 Bias



2.1.3 Parameters

obi_num	0	Obi number	sched_exp_time	47000.000000	[s] Scheduled observation exposure time
ascdsver	8.4.5	Processing system revision	ontime	46956.75886479	Sum of GTIs [s]
caldbver	4.5.2	 	ontime2	46953.517864615	Sum of GTIs [s]
date	2012-10-14T20:56:35	Date and time of file creation	ontime3	46959.99982506	Sum of GTIs [s]
revision	3	Processing version of data	ontime5	46959.99982506	Sum of GTIs [s]
			ontime6	46959.99982506	Sum of GTIs [s]
			ontime7	46956.75886479	Sum of GTIs [s]
			ontime8	46959.99982506	Sum of GTIs [s]
			l1events	2175085	Number of level 1 events

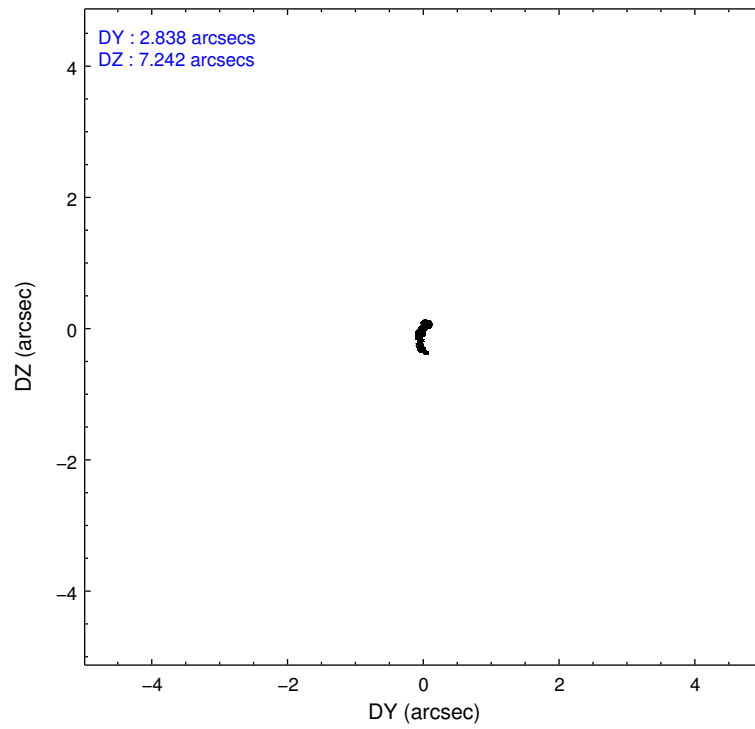
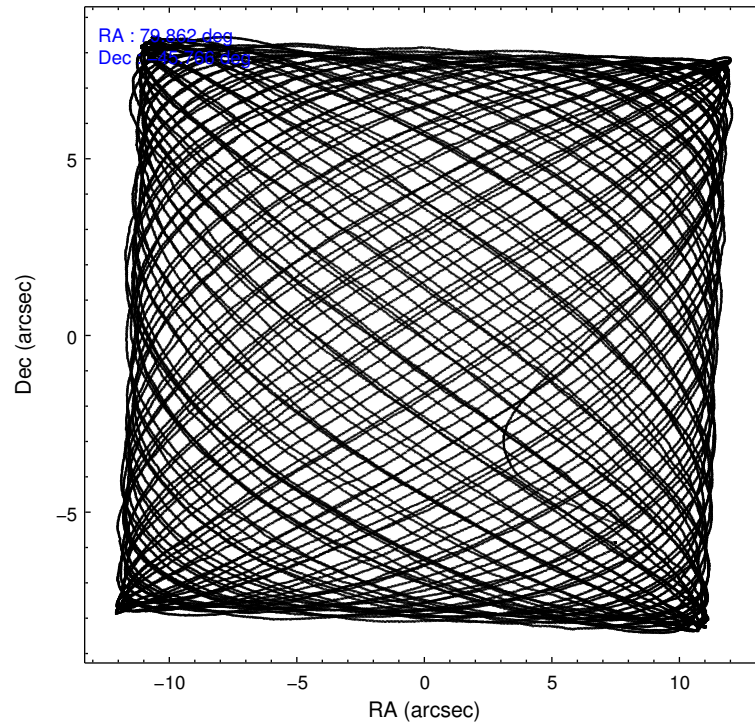
2.1.4 Events

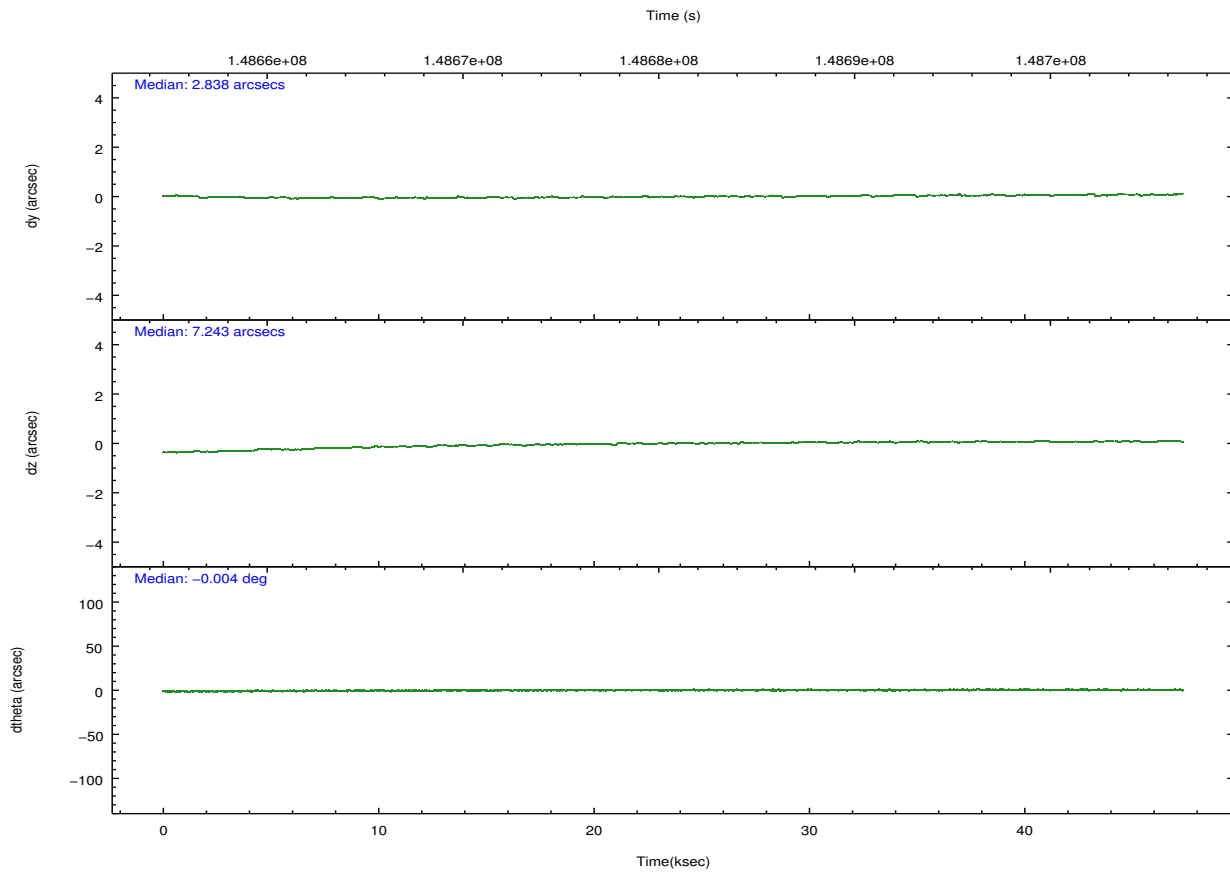
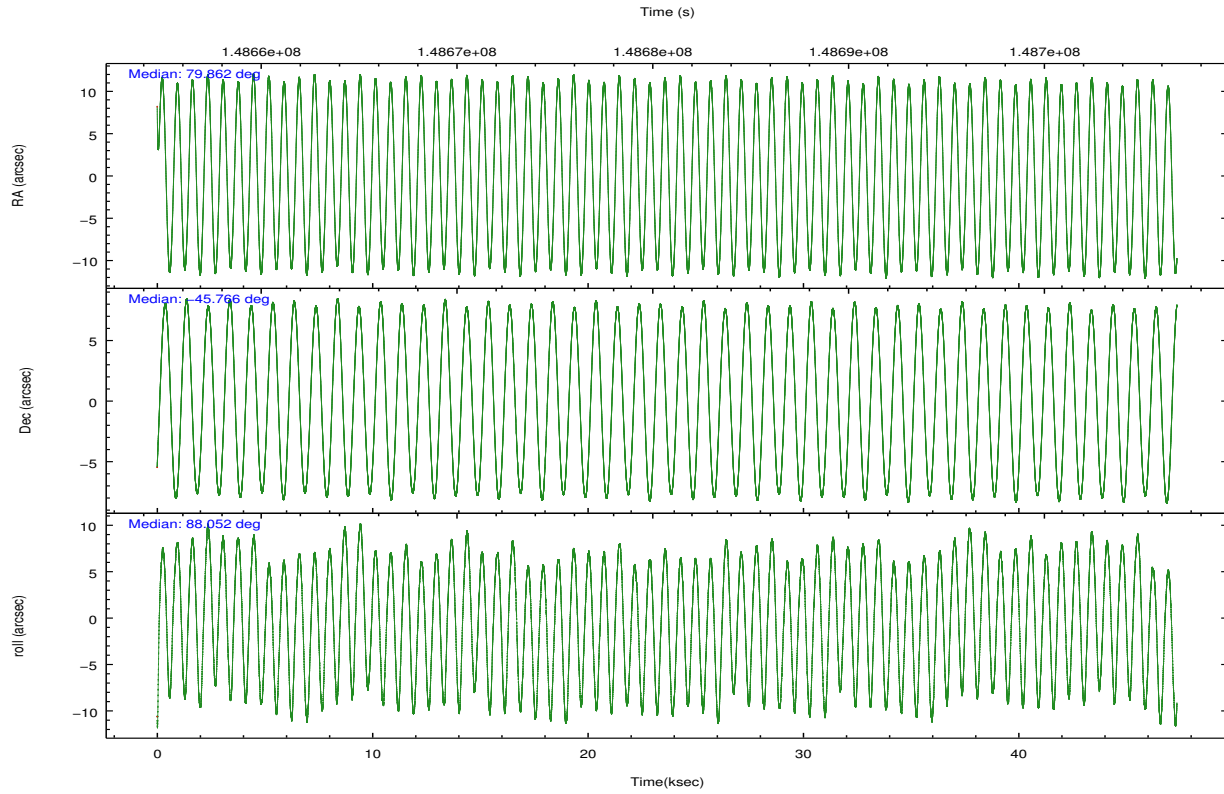
	ccd 2	ccd 3	ccd 5	ccd 6	ccd 7	ccd 8		ccd 2	ccd 3	ccd 5	ccd 6	ccd 7	ccd 8
level 1 events	310501	285076	468471	294344	444102	372591	grade 0 events	18205	15077	37019	14984	24660	24761
rejected events	272562	251049	240027	258507	236259	296057		5%	5%	7%	5%	5%	6%
rejected %	87%	88%	51%	87%	53%	79%	grade 1 events	178	158	4483	157	993	217
								0%	0%	0%	0%	0%	0%
							grade 2 events	7248	6396	65277	7160	42406	16330
								2%	2%	13%	2%	9%	4%
							grade 3 events	3413	3446	9180	3470	18952	8033
								1%	1%	1%	1%	4%	2%
							grade 4 events	3358	3462	8767	3378	18985	7580
								1%	1%	1%	1%	4%	2%
							grade 5 events	11503	12607	32567	13069	39332	16874
								3%	4%	6%	4%	8%	4%
							grade 6 events	5717	5650	108257	6855	102892	19839
								1%	1%	23%	2%	23%	5%
							grade 7 events	260879	238280	202921	245271	195882	278957
								84%	83%	43%	83%	44%	74%

2.2 Compared Parameters

Parameter	Planned	Actual	Parameter	Planned	Actual
Instrument	ACIS	ACIS	Obspar format version number	7	7
Detector	ACIS-235678	ACIS-235678	Obspar file type	PREDICTED	ACTUAL
Grating	NONE	NONE	Obspar update status	NONE	UPDATED
Data mode	FAINT	FAINT	Number of optional ACIS chips dropped	0	0
Observation mode	POINTING	POINTING	On-chip summing requested	N	N
[deg] Pointing RA	79.880313	79.86150045641087	Subarray requested	NONE	NONE
[deg] Pointing Dec	-45.790300	-45.76642957332782	Alternating exposures requested	N	N
[deg] Pointing Roll	87.915161	88.05829913669487	[s] Primary exposure time	0.000000	3.2
[mm] SIM focus pos	-0.684267	-0.6828225247311905			
[mm] SIM defocus	0	0.001444936568705701			
[mm] SIM translation stage pos	-190.132523	-190.1425803651734			
[mm] SIM translation stage offset	0	0.01005778216563158			
[s] Observation start time (MET)	148657396.184000	148656350.95094			
Observation start date	2002-09-17T13:42:12	2002-09-17T13:25:50			
[s] Observation end time (MET)	148704396.184000	148704964.65295			
Observation end date	2002-09-18T02:45:32	2002-09-18T02:56:04			
Read mode	TIMED	TIMED			

2.3 Aspect



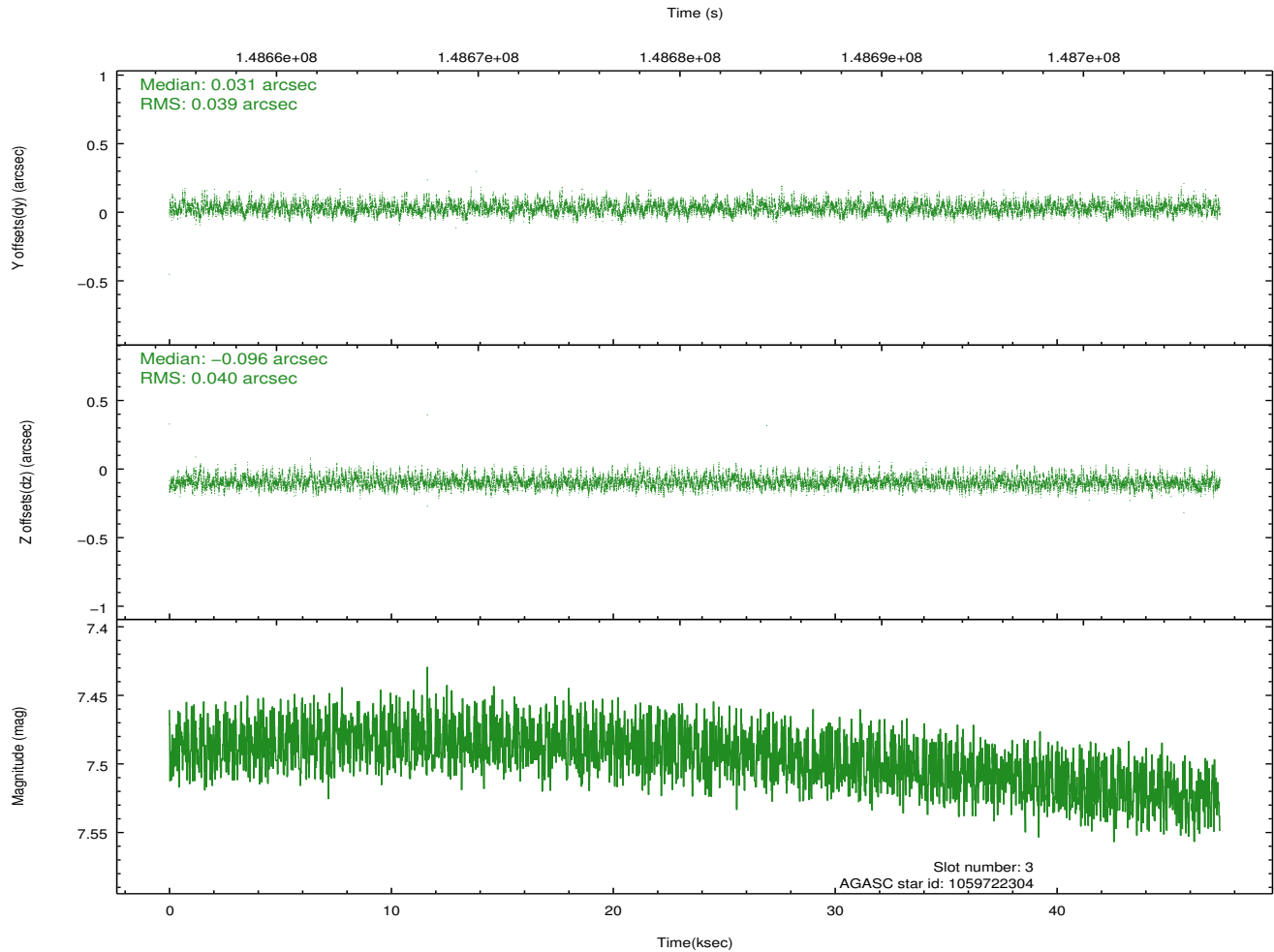
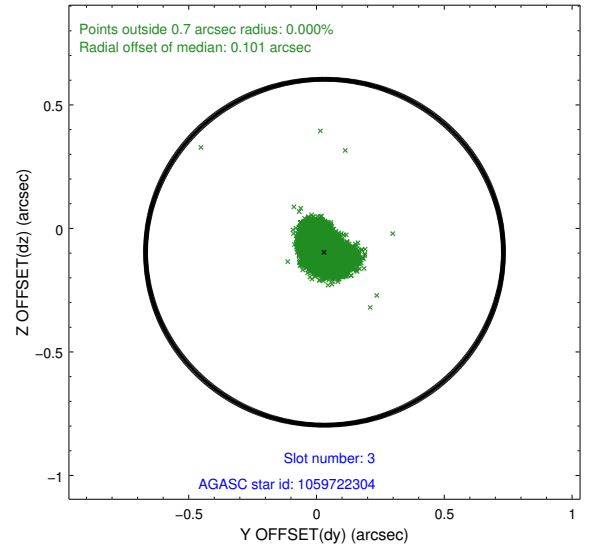
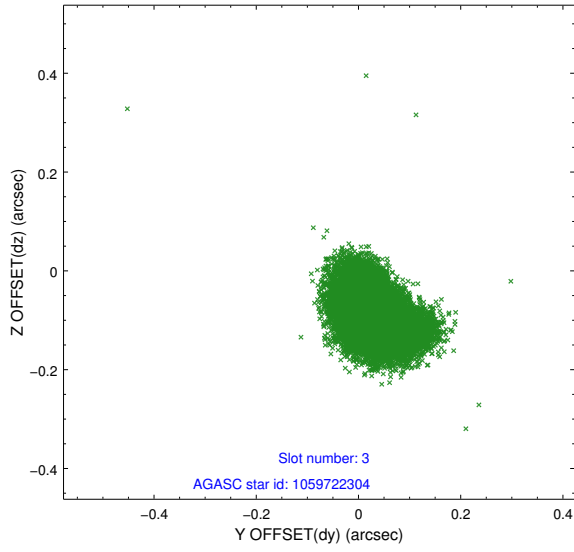


Slot Statistics

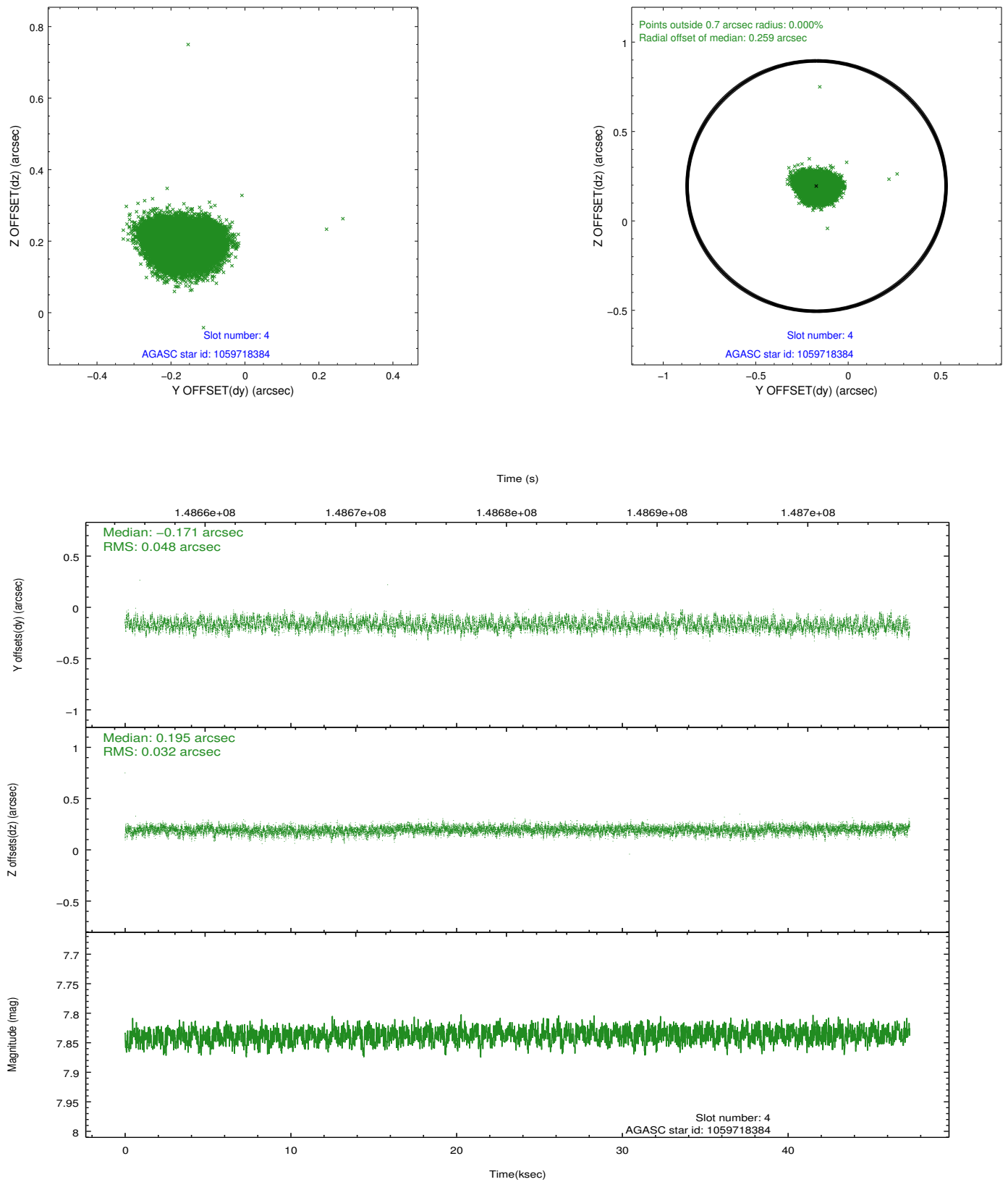
slot	status	id	mag	n_pts	med_dy	med_dz	dr1	dr2	ra	dec	mean_y	mean_z
0	FID	ACIS-S-2	7.11	11547	-0.019	0.002	0.007	0.013	0.000000	0.000000	-755.50	-1728.31
1	FID	ACIS-S-4	7.20	11547	-0.011	0.008	0.006	0.011	0.000000	0.000000	2157.79	180.19
2	FID	ACIS-S-5	7.24	11547	-0.002	-0.002	0.008	0.014	0.000000	0.000000	-1808.33	173.84
3	GUIDE	1059722304	7.49	23094	0.031	-0.096	0.059	0.099	79.157586	-45.913736	-518.34	1792.99
4	GUIDE	1059718384	7.84	23093	-0.171	0.195	0.062	0.099	80.663676	-45.411103	1426.60	-1928.12
5	GUIDE	1059724224	9.24	23091	-0.158	-0.017	0.097	0.159	79.882936	-45.125709	2391.00	81.14
6	GUIDE	1059722088	9.55	23075	0.106	0.025	0.087	0.140	80.609257	-46.439911	-2279.22	-1892.22
7	GUIDE	1059725056	9.58	23011	0.190	-0.113	0.113	0.183	79.204255	-46.412186	-2305.58	1595.45

2.4 Star Slots

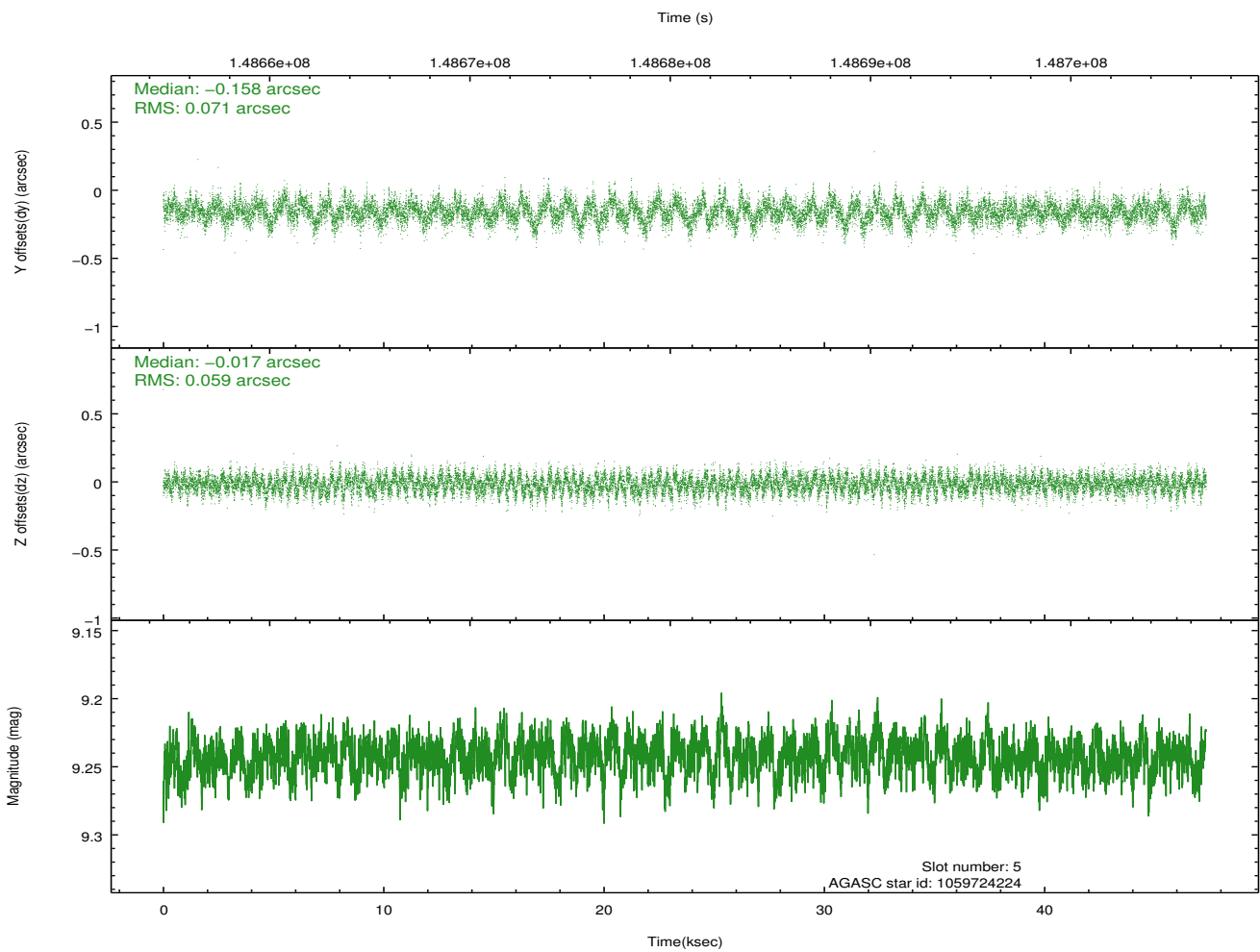
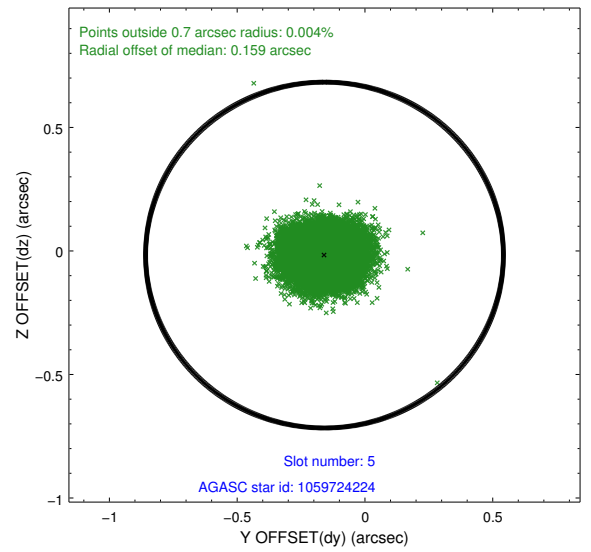
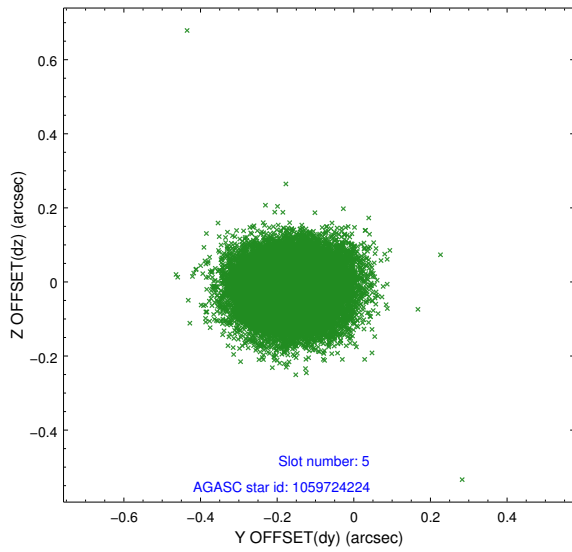
2.4.1 Slot 3



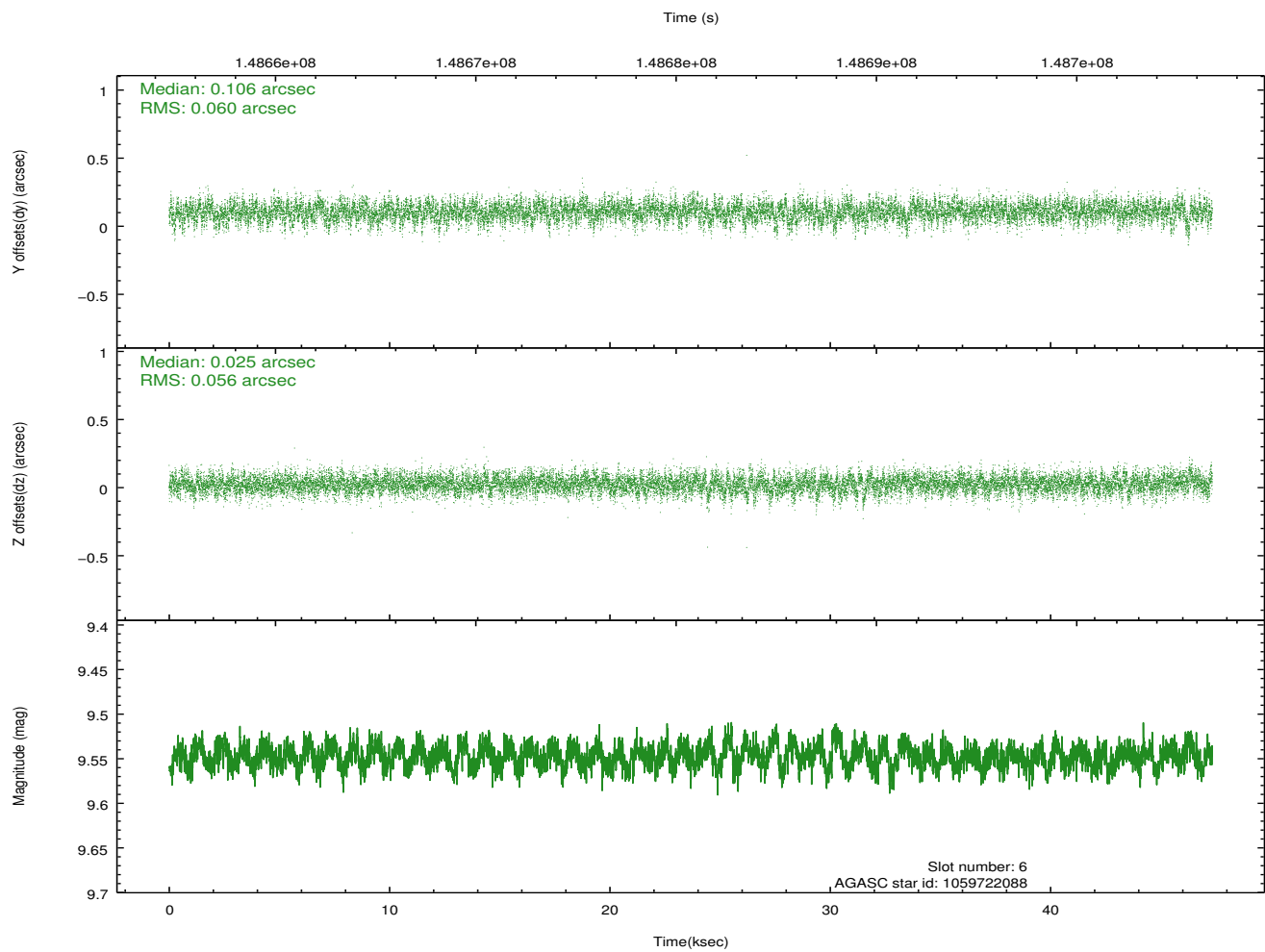
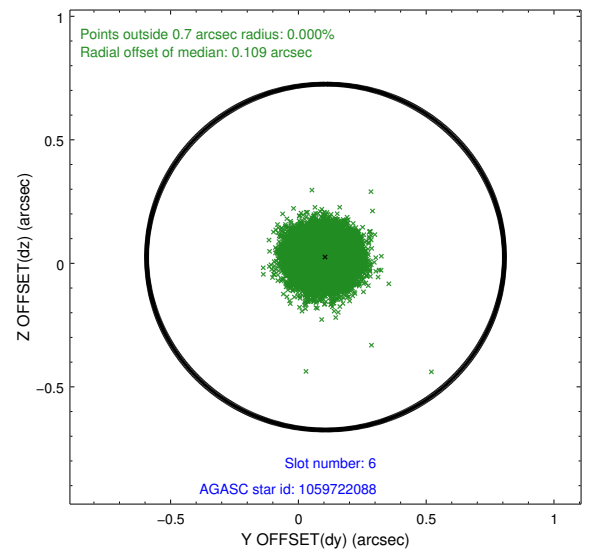
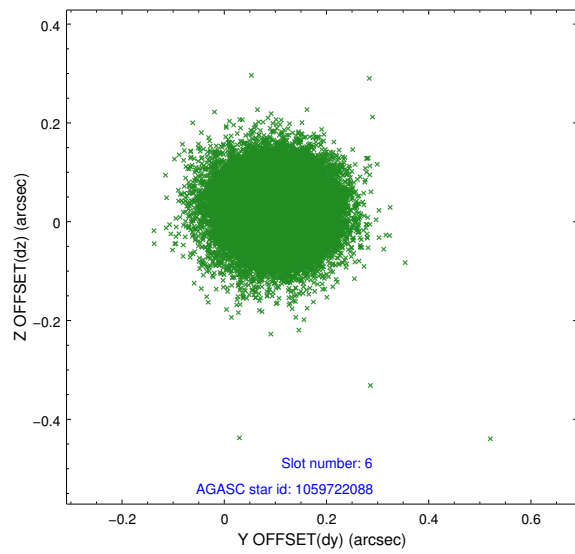
2.4.2 Slot 4



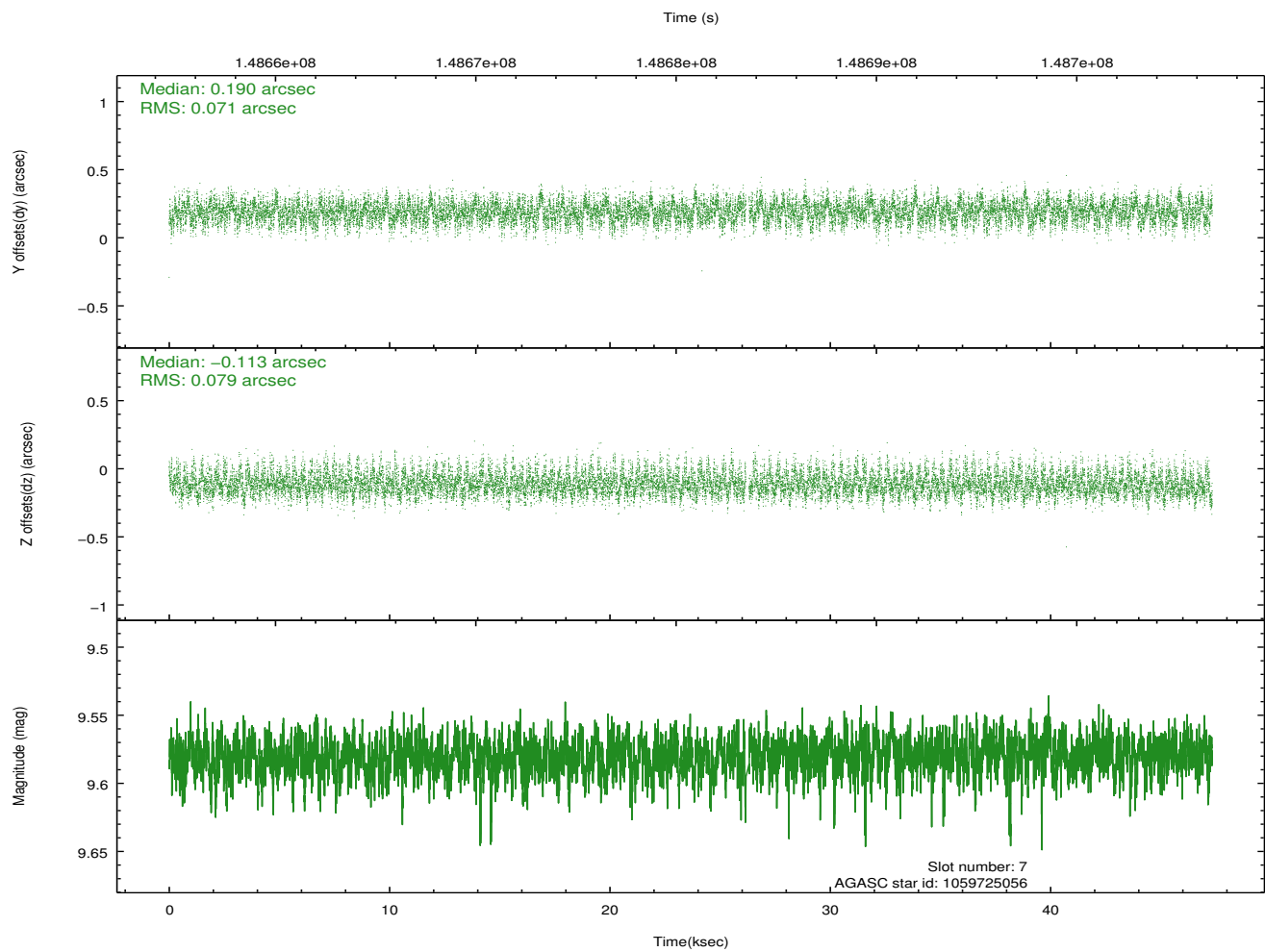
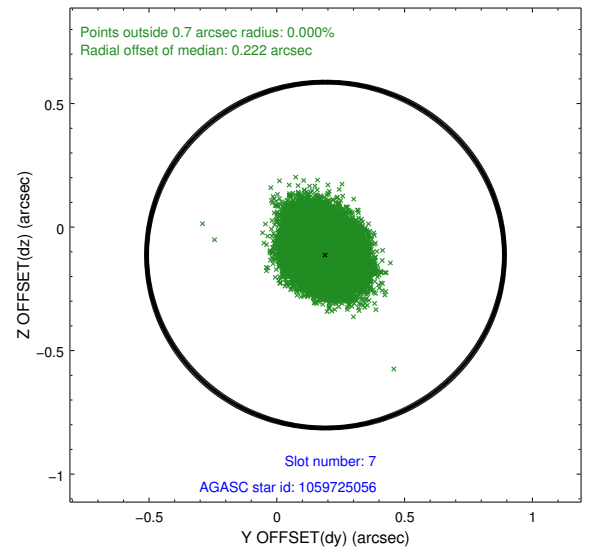
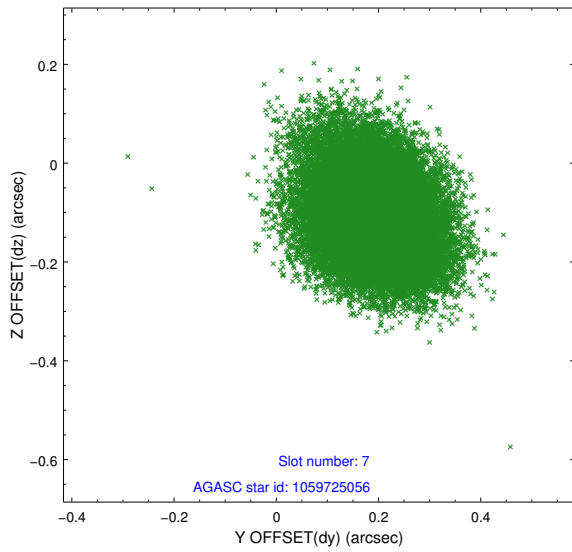
2.4.3 Slot 5



2.4.4 Slot 6

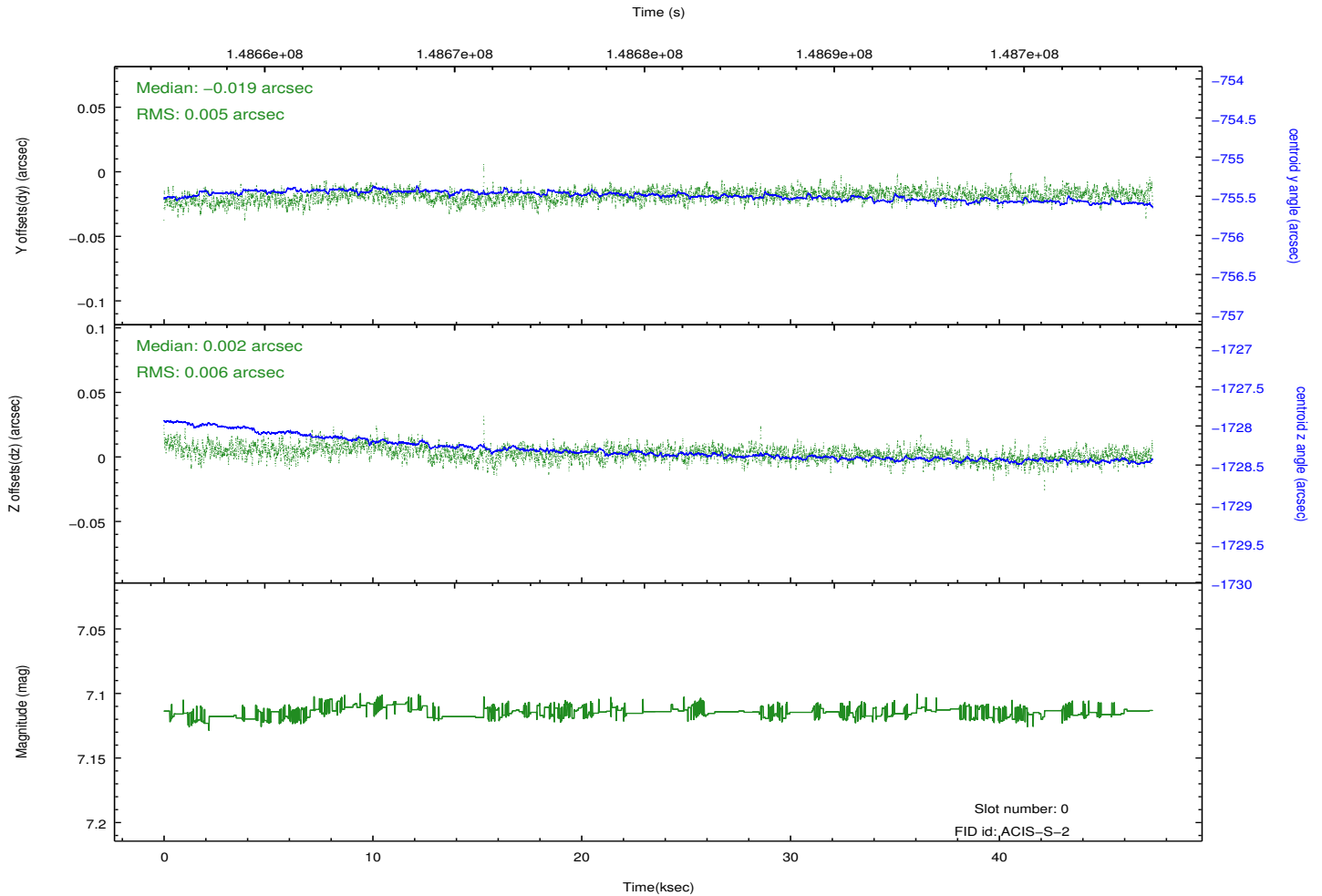
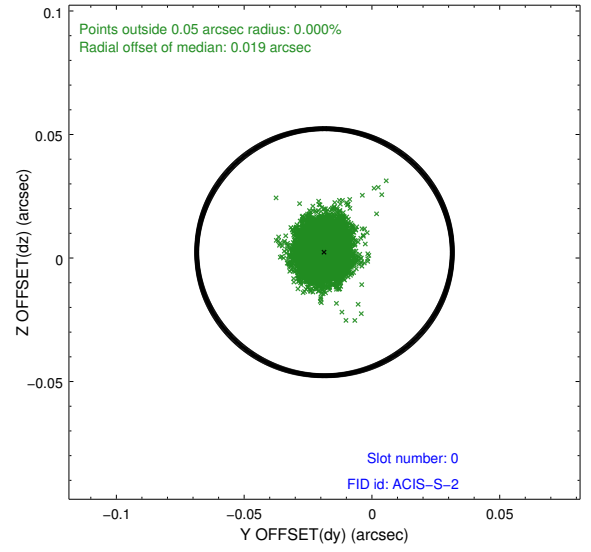
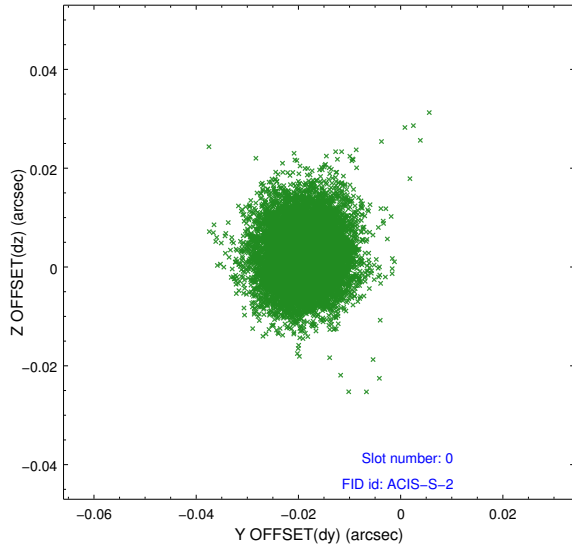


2.4.5 Slot 7

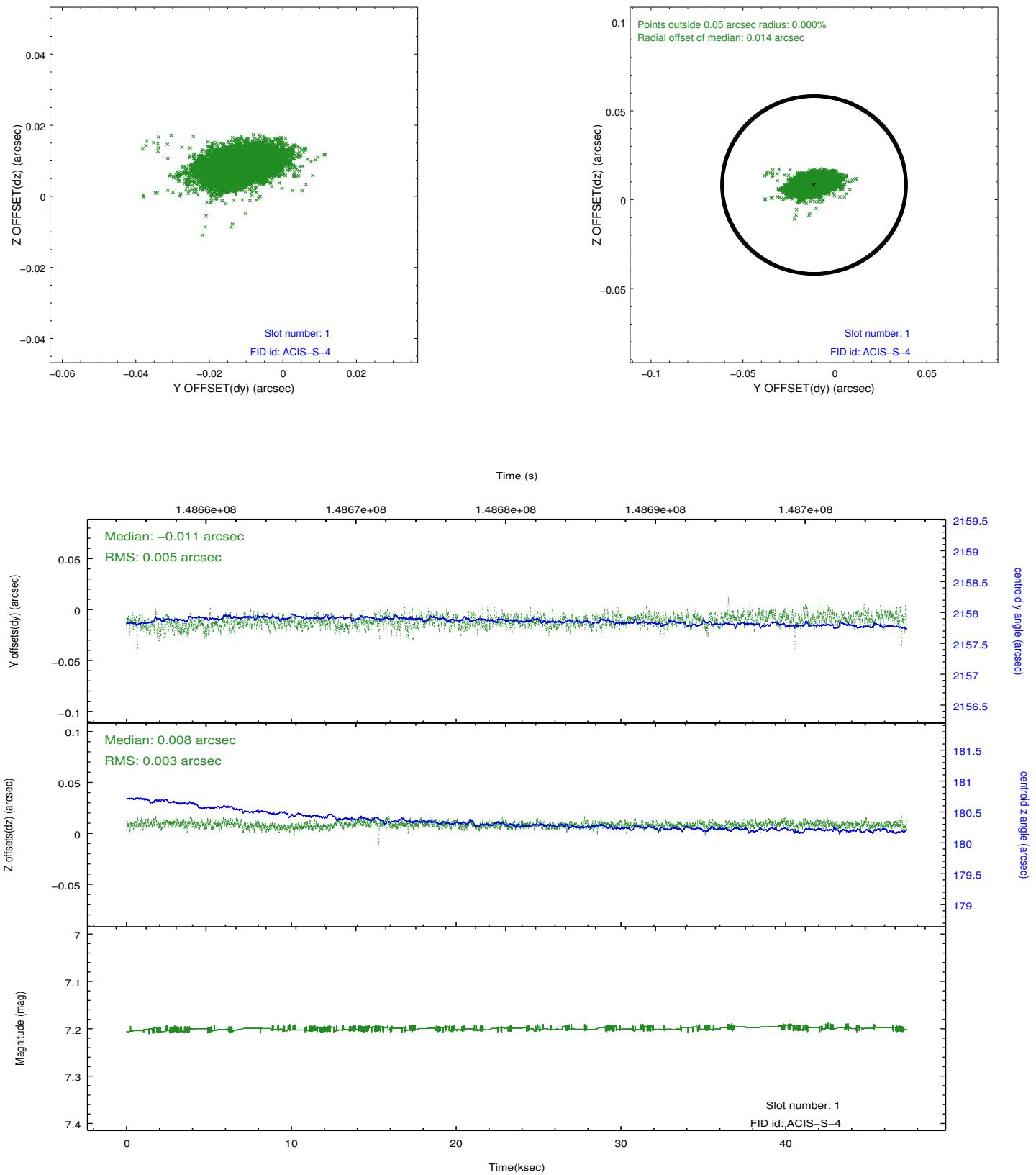


2.5 FID Slots

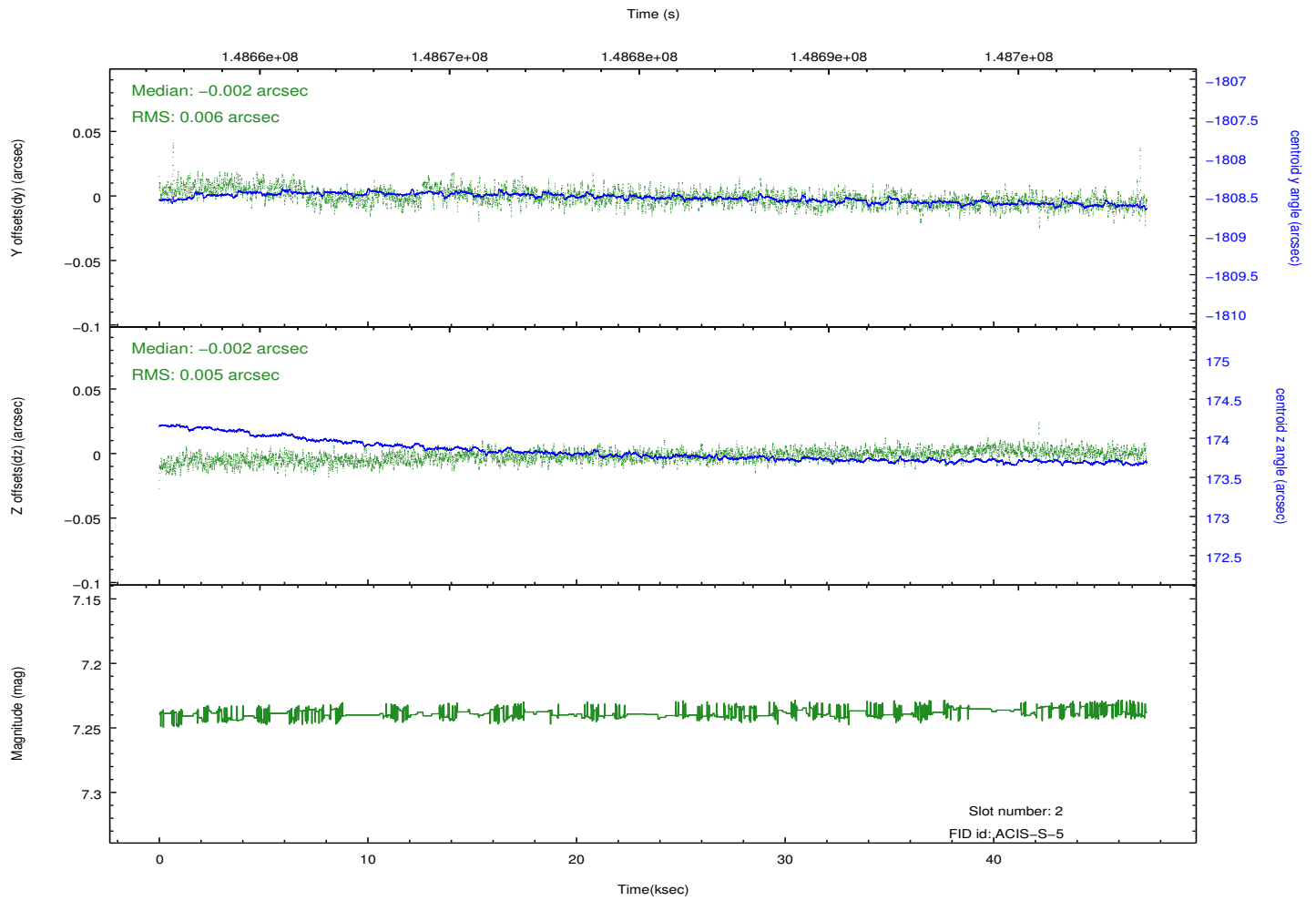
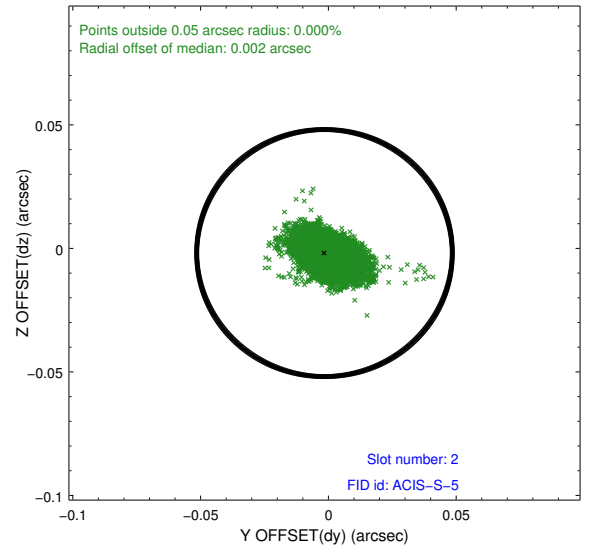
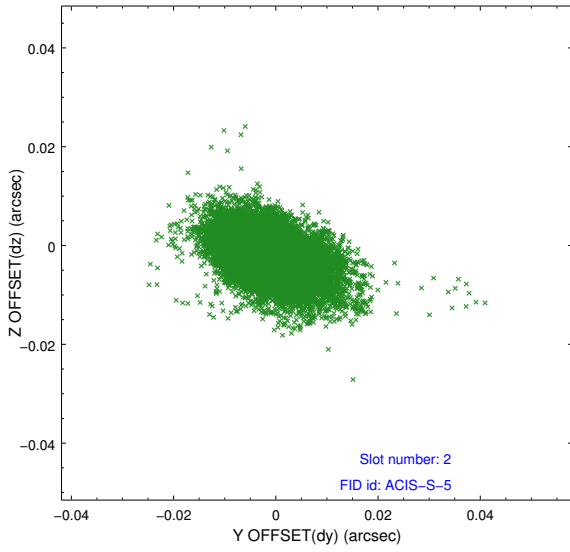
2.5.1 Slot 0



2.5.2 Slot 1



2.5.3 Slot 2



A Summary

A.1 Status

V&V Scientist	Jen Lauer
V&V Date (YYYY-MM-DD)	2012.10.24
V&V Edition	1
V&V Disposition and Status	OK
V&V Charge Time	46.959

A.2 Comments