

V&V Reference Report

L2 ASCDS Version : 8.4.5

Observation 3180 - L2 Version 3
Chandra X-Ray Center

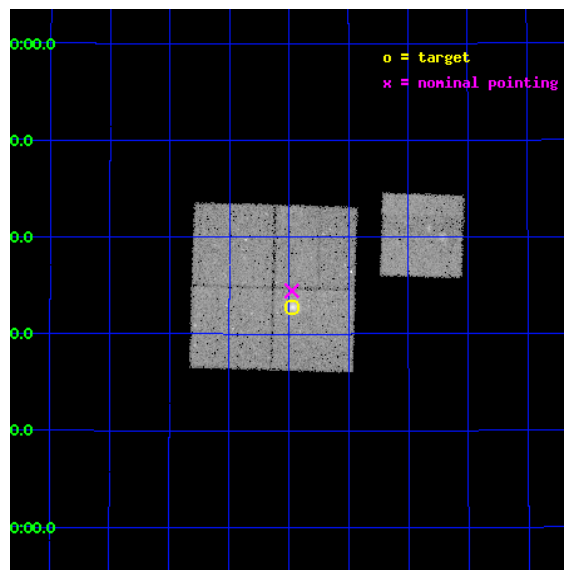
L2 Processing Date : Oct 21 2012

Contents

1	Front	2
2	OBI	3
2.1	OBI	3
2.1.1	Images	3
2.1.2	Bias	3
2.1.3	Parameters	4
2.1.4	Events	4
2.2	Compared Parameters	5
2.3	Aspect	6
2.4	Star Slots	9
2.4.1	Slot 3	9
2.4.2	Slot 4	10
2.4.3	Slot 5	11
2.4.4	Slot 6	12
2.4.5	Slot 7	13
2.5	FID Slots	14
2.5.1	Slot 0	14
2.5.2	Slot 1	15
2.5.3	Slot 2	16
A	Summary	17
A.1	Status	17
A.2	Comments	17

1 Front

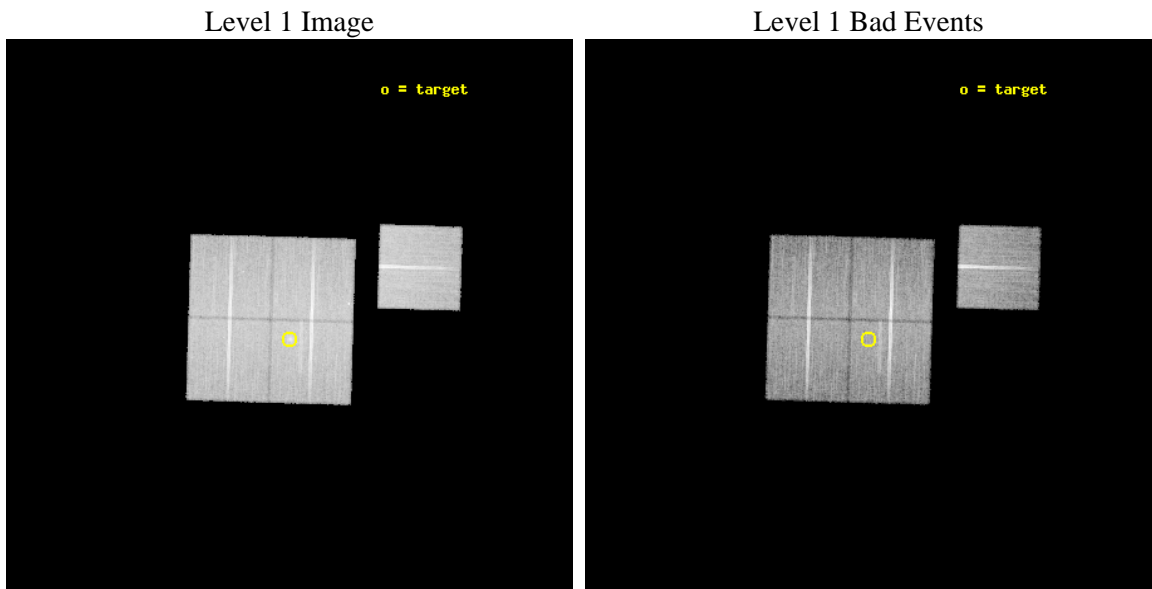
seq_num	800180	Sequence number
obs_id	3180	Observation id
title	MEASURING THE MASS DISTRIBUTION IN THE MOST DISTANT, VERY X-RAY LUMINOUS GALAXY CLUSTER KNOWN	Proposal title
observer	Dr. Harald Ebeling	Principal investigator
object	CLJ1226.9+3332	Source name
dtcycle	0	
cycle	P	events from which exps? Prim/Second/Both
ra_targ	186.7425	Observer's specified target RA [deg]
dec_targ	33.546667	Observer's specified target Dec [deg]
ra_nom	186.74379667137	Nominal RA [deg]
dec_nom	33.574302563666	Nominal Dec [deg]
roll_nom	91.677143965593	Nominal Roll [deg]
revision	3	Processing version of data
ontime	32115.829940975	Sum of GTIs [s]
livetime	31696.212979466	Livetime [s]
ontime0	32118.847801208	Sum of GTIs [s]
ontime1	32115.747860998	Sum of GTIs [s]
ontime2	32112.647920728	Sum of GTIs [s]
ontime3	32115.829940975	Sum of GTIs [s]
ontime6	32115.665780962	Sum of GTIs [s]
l2events	104274	Number of level 2 events



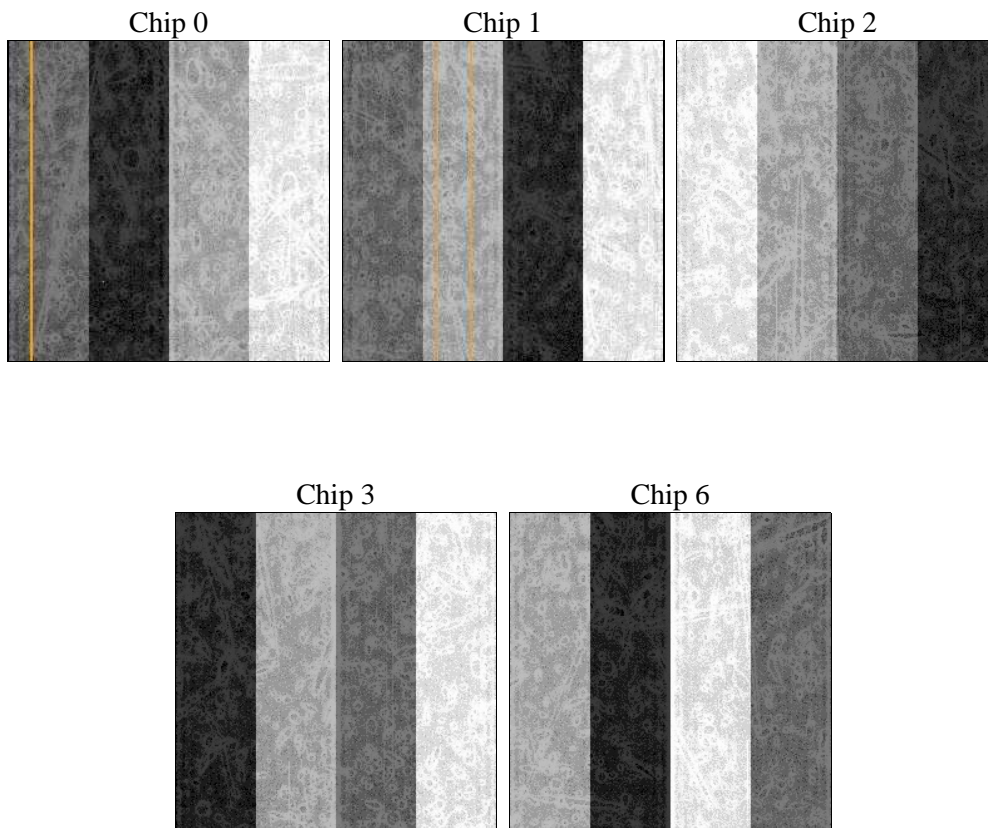
2 OBI

2.1 OBI

2.1.1 Images



2.1.2 Bias



2.1.3 Parameters

obi_num	0	Obi number	sched_exp_time	32000.000000	[s] Scheduled observation exposure time
ascdsver	8.4.5	Processing system revision	ontime	32115.829940975	Sum of GTIs [s]
caldbver	4.5.2	 	ontime0	32118.847801208	Sum of GTIs [s]
date	2012-10-21T06:22:33	Date and time of file creation	ontime1	32115.747860998	Sum of GTIs [s]
revision	3	Processing version of data	ontime2	32112.647920728	Sum of GTIs [s]
			ontime3	32115.829940975	Sum of GTIs [s]
			ontime6	32115.665780962	Sum of GTIs [s]
			l1events	944873	Number of level 1 events

2.1.4 Events

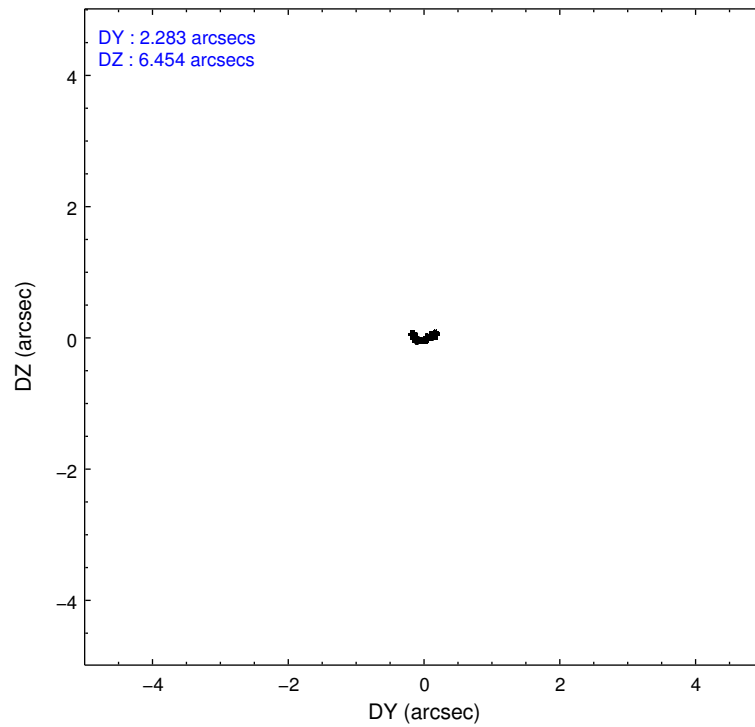
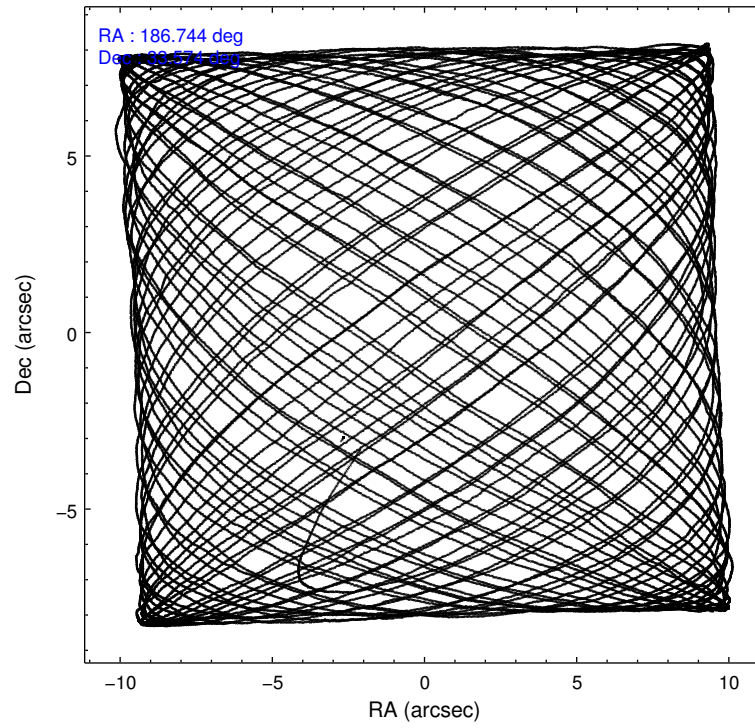
	ccd 0	ccd 1	ccd 2	ccd 3	ccd 6
level 1 events	180043	180801	194933	193142	195954
rejected events	156445	156079	171407	167956	172165
rejected %	86%	86%	87%	86%	87%

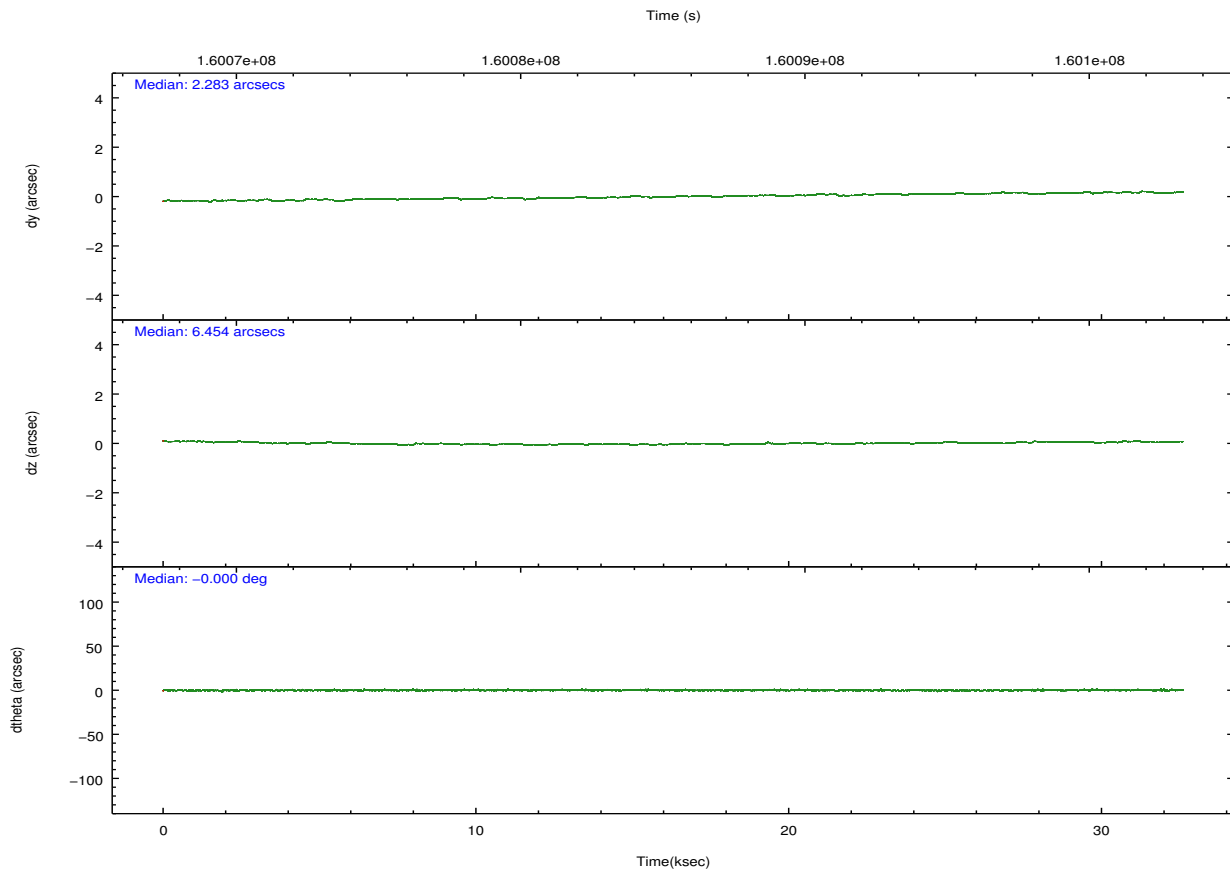
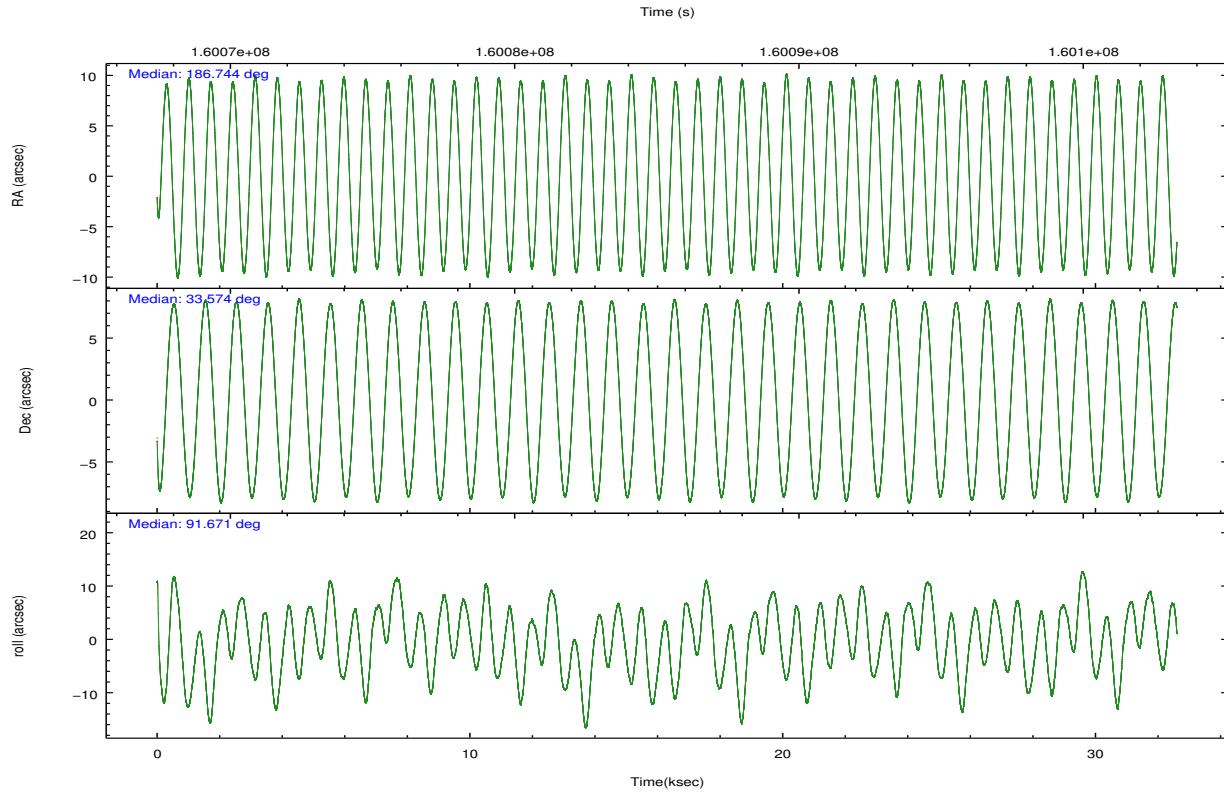
	ccd 0	ccd 1	ccd 2	ccd 3	ccd 6
grade 0 events	10372	9857	10964	12198	10007
	5%	5%	5%	6%	5%
grade 1 events	93	97	123	133	67
	0%	0%	0%	0%	0%
grade 2 events	4661	5117	4525	4414	4757
	2%	2%	2%	2%	2%
grade 3 events	2274	2479	2216	2275	2259
	1%	1%	1%	1%	1%
grade 4 events	2253	2528	2163	2280	2233
	1%	1%	1%	1%	1%
grade 5 events	7681	8112	7338	8465	8516
	4%	4%	3%	4%	4%
grade 6 events	4045	4743	3660	4020	4540
	2%	2%	1%	2%	2%
grade 7 events	148664	147868	163944	159357	163575
	82%	81%	84%	82%	83%

2.2 Compared Parameters

Parameter	Planned	Actual	Parameter	Planned	Actual
Instrument	ACIS	ACIS	Obspar format version number	7	7
Detector	ACIS-01236	ACIS-01236	Obspar file type	PREDICTED	ACTUAL
Grating	NONE	NONE	Obspar update status	NONE	UPDATED
Data mode	VFAINT	VFAINT	Number of optional ACIS chips dropped	0	0
Observation mode	POINTING	POINTING	On-chip summing requested	N	N
[deg] Pointing RA	186.761167	186.7437966713654	Subarray requested	NONE	NONE
[deg] Pointing Dec	33.551069	33.57430256366585	Alternating exposures requested	N	N
[deg] Pointing Roll	91.458840	91.67714396559339	[s] Primary exposure time	0.000000	3.1
[mm] SIM focus pos	-0.782348	-0.7809083437167272			
[mm] SIM defocus	0	0.001439871863259334			
[mm] SIM translation stage pos	-229.442463	-229.4438428438578			
[mm] SIM translation stage offset	-4.15	-4.148610159071865			
[s] Observation start time (MET)	160069661.184000	160068495.40111			
Observation start date	2003-01-27T15:46:37	2003-01-27T15:28:15			
[s] Observation end time (MET)	160101661.184000	160102224.05253			
Observation end date	2003-01-28T00:39:57	2003-01-28T00:50:24			
Read mode	TIMED	TIMED			

2.3 Aspect



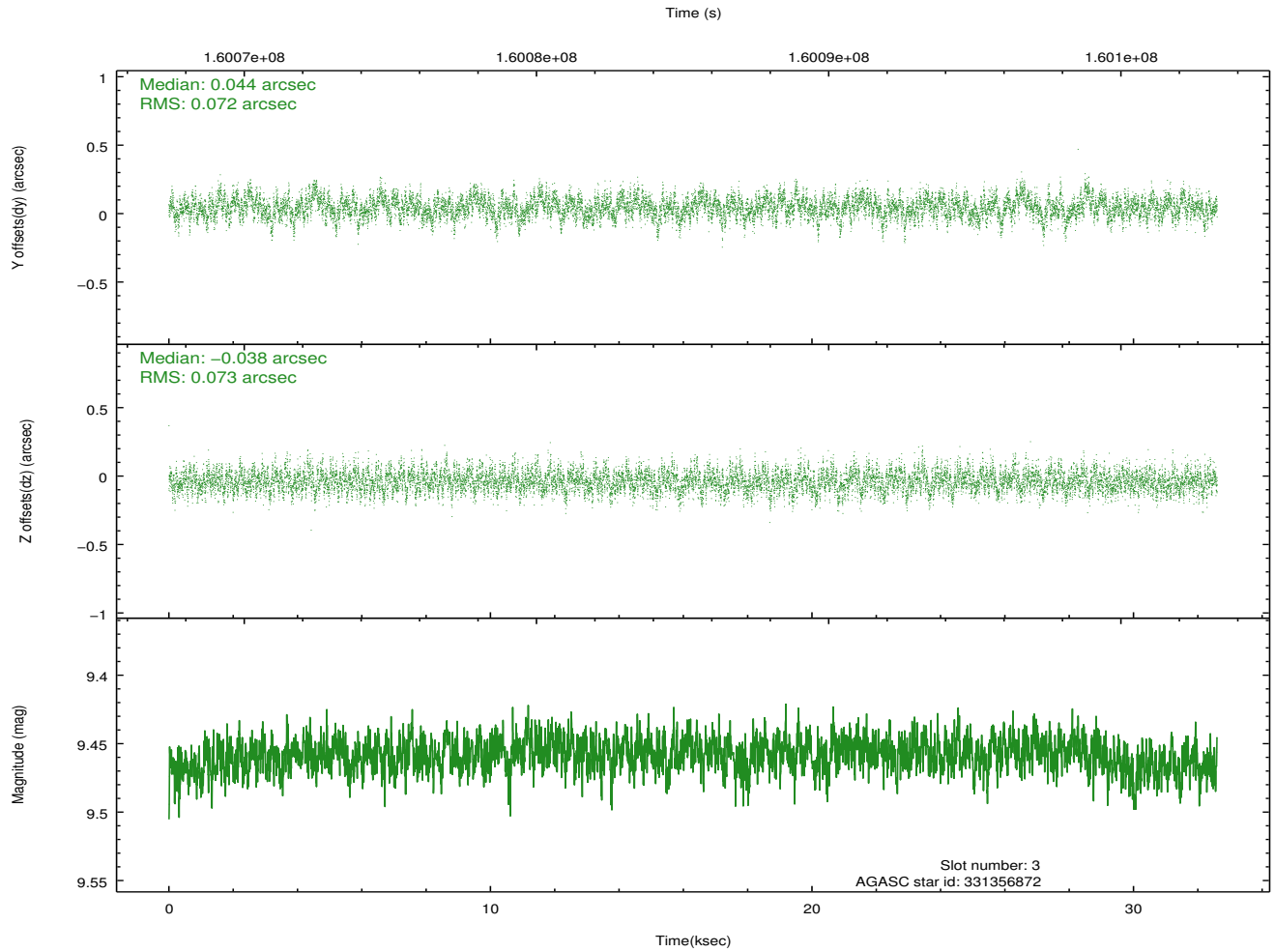
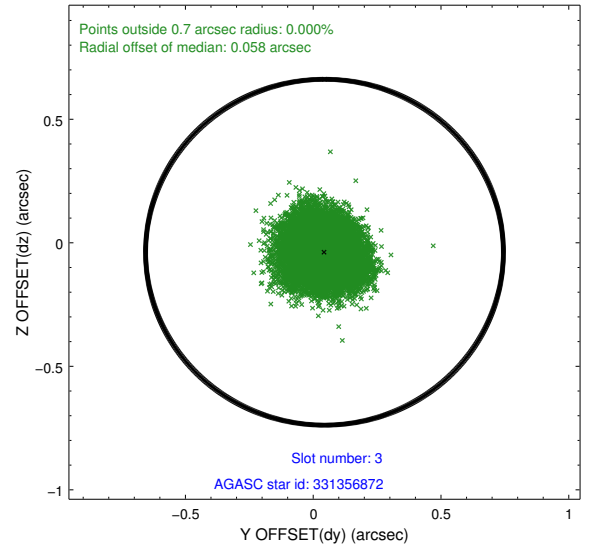
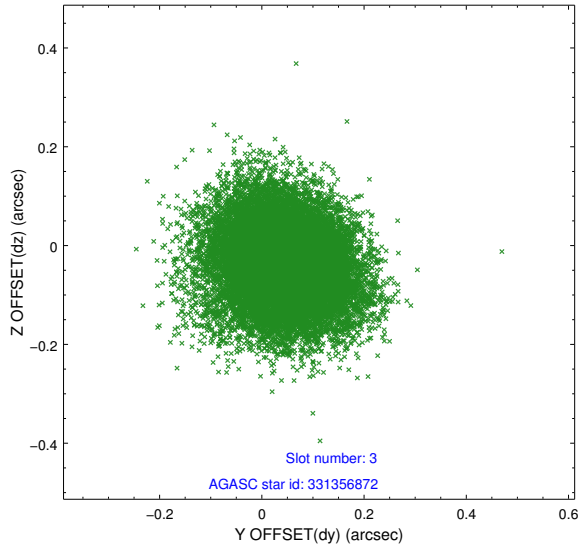


Slot Statistics

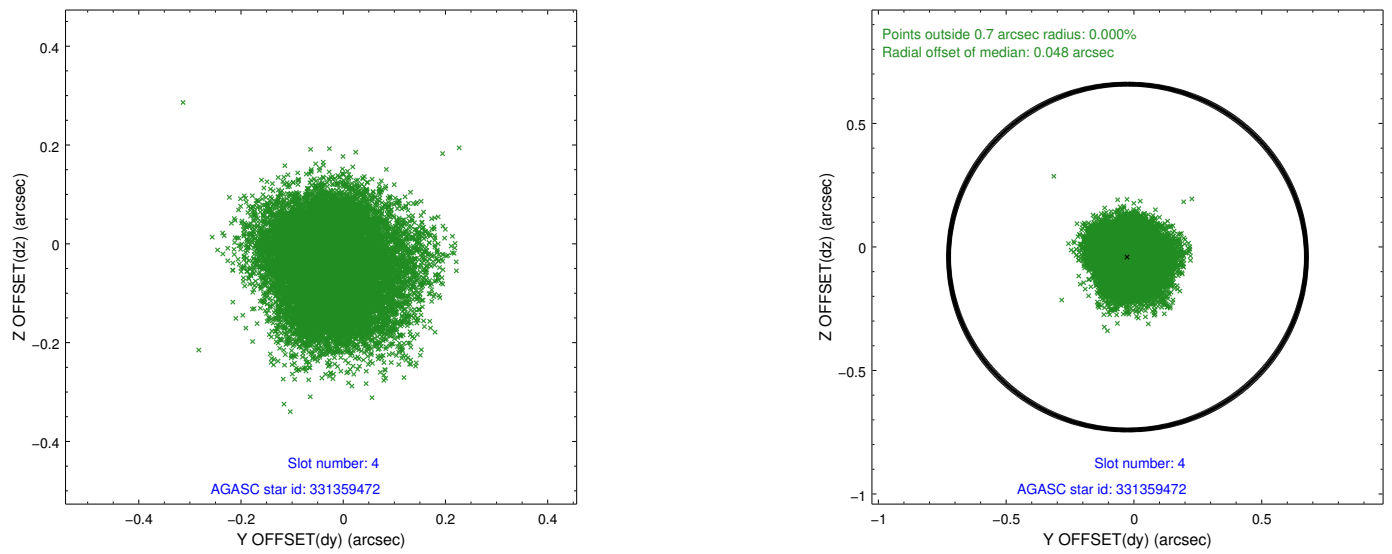
slot	status	id	mag	n_pts	med_dy	med_dz	dr1	dr2	ra	dec	mean_y	mean_z
0	FID	ACIS-I-1	7.25	7952	0.044	0.007	0.007	0.013	0.000000	0.000000	937.47	-914.98
1	FID	ACIS-I-5	7.25	7952	-0.145	0.072	0.007	0.012	0.000000	0.000000	-1810.74	982.62
2	FID	ACIS-I-6	7.27	7952	0.011	-0.008	0.008	0.013	0.000000	0.000000	403.00	1627.04
3	GUIDE	331356872	9.46	15894	0.044	-0.038	0.109	0.178	186.232000	33.528992	-34.80	1589.63
4	GUIDE	331359472	9.32	15898	-0.025	-0.041	0.106	0.170	187.224794	33.172746	-1393.66	-1361.82
5	GUIDE	331359840	9.64	15854	-0.023	0.003	0.148	0.245	187.405317	33.549371	-48.94	-1931.81
6	GUIDE	331361424	10.43	15884	-0.109	0.077	0.132	0.216	187.160339	33.746695	676.22	-1212.21
7	GUIDE	331362384	8.79	15899	0.113	-0.006	0.075	0.118	187.227369	32.923477	-2290.92	-1351.00

2.4 Star Slots

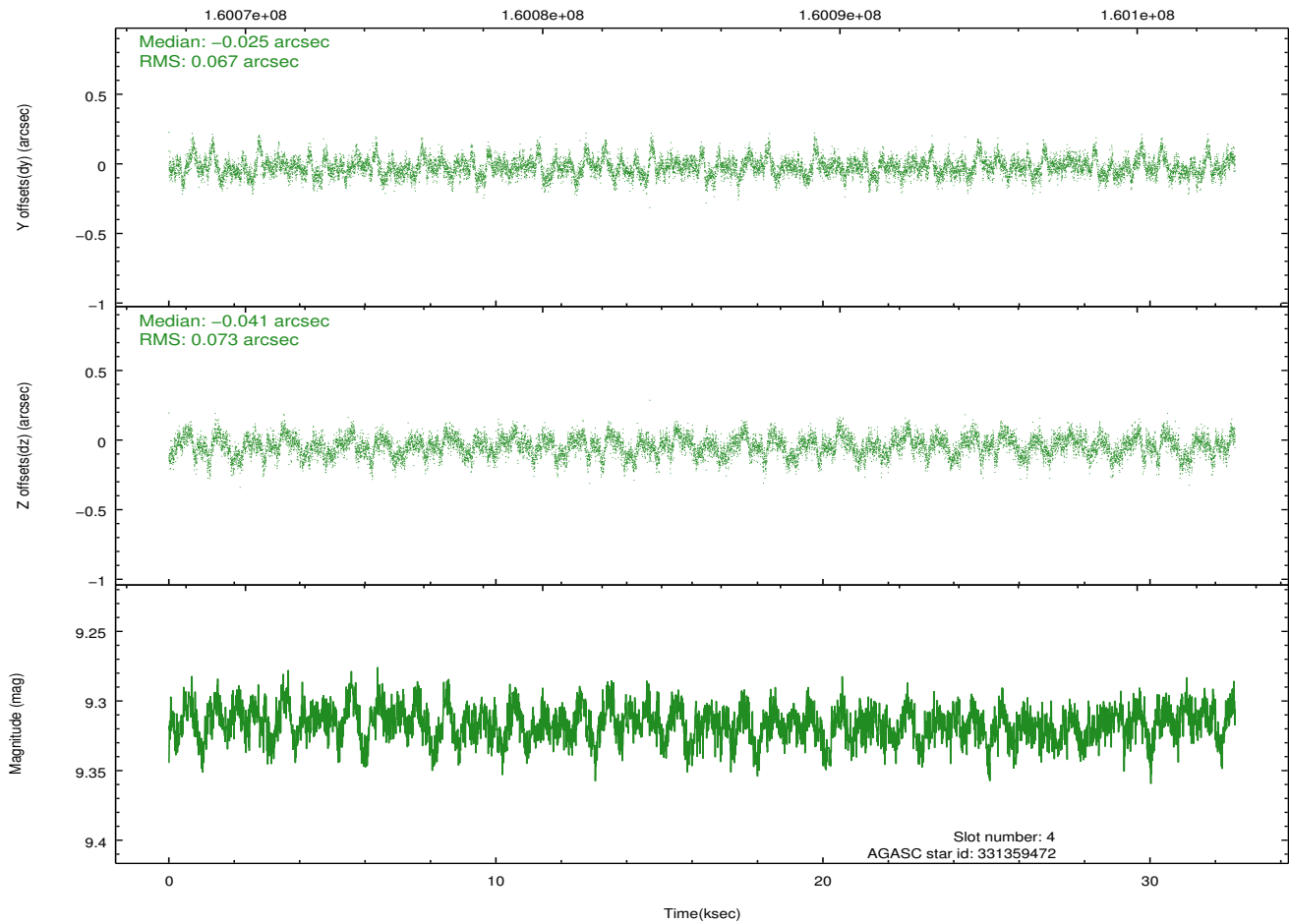
2.4.1 Slot 3



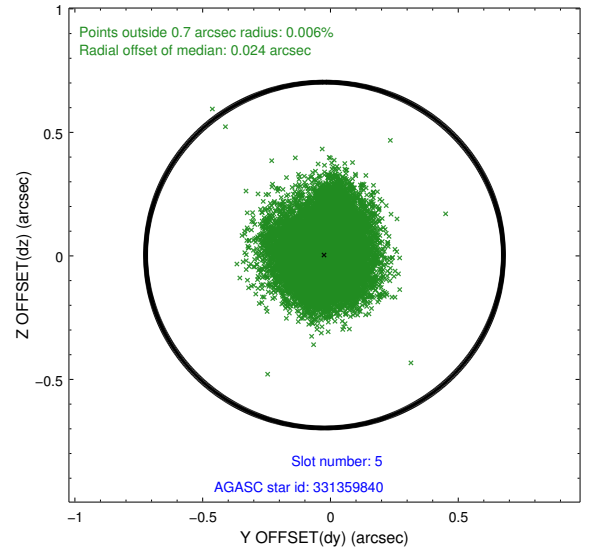
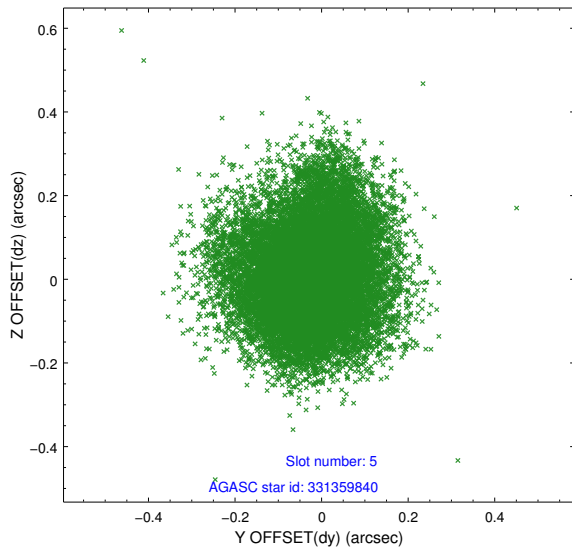
2.4.2 Slot 4



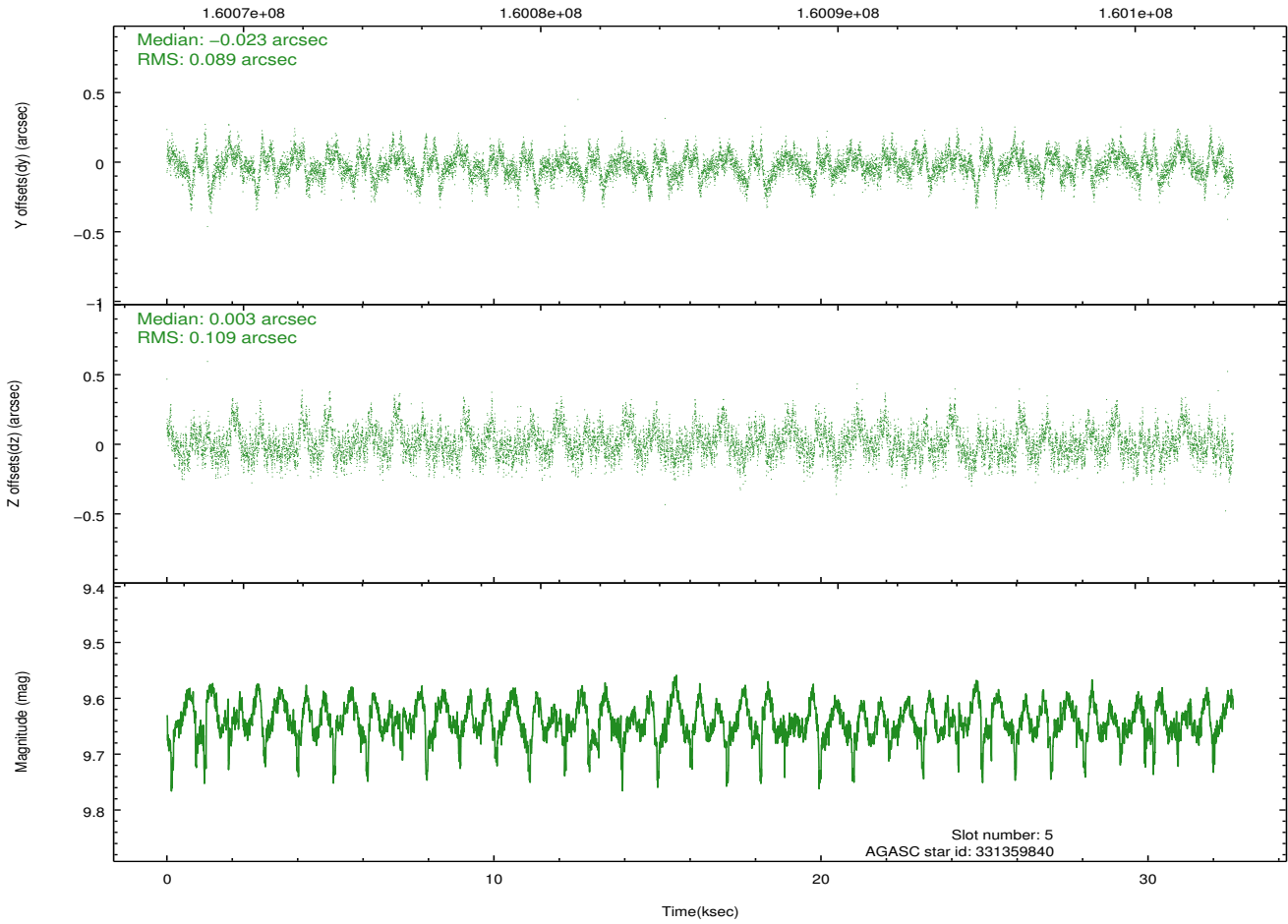
Time (s)



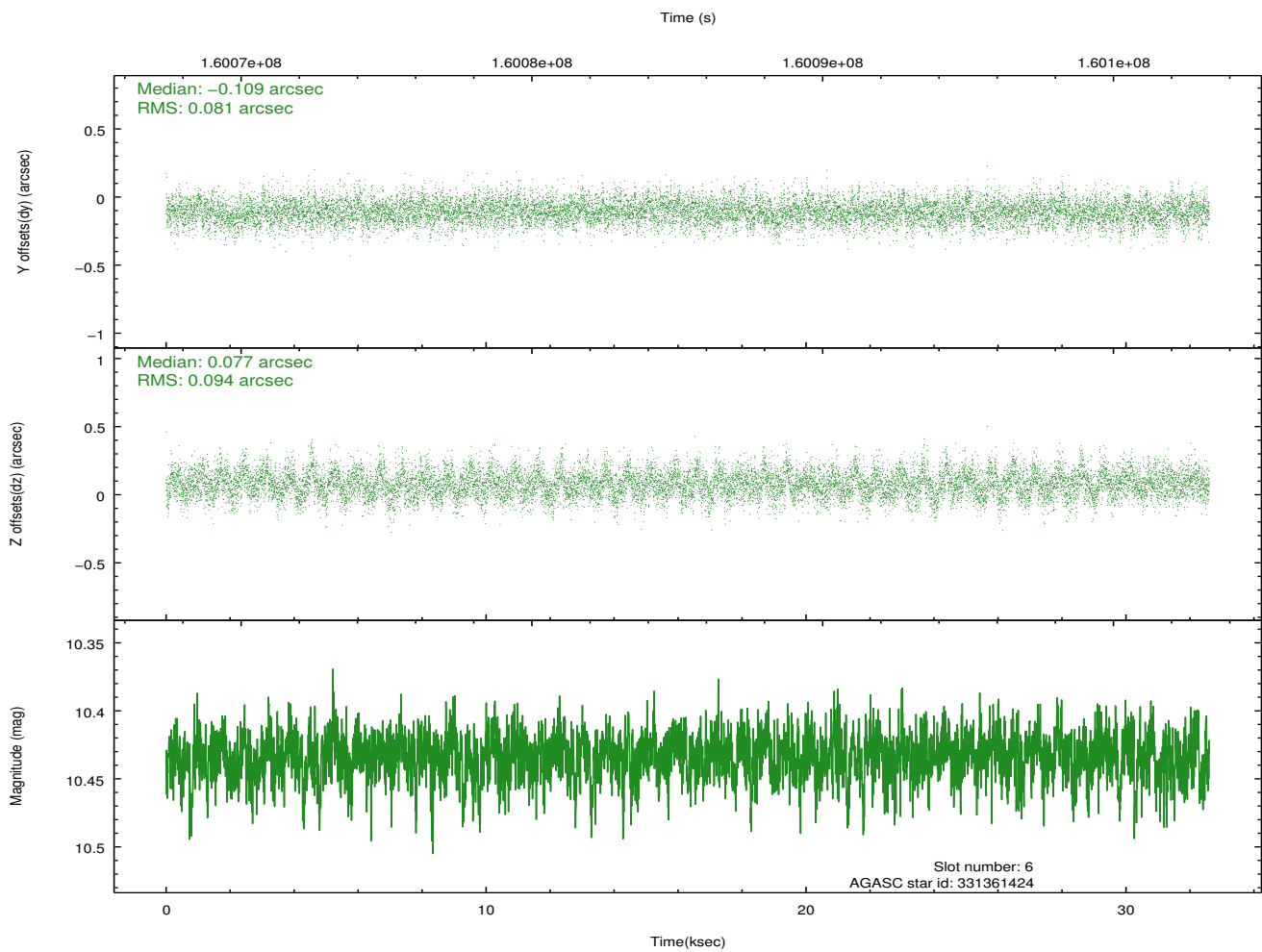
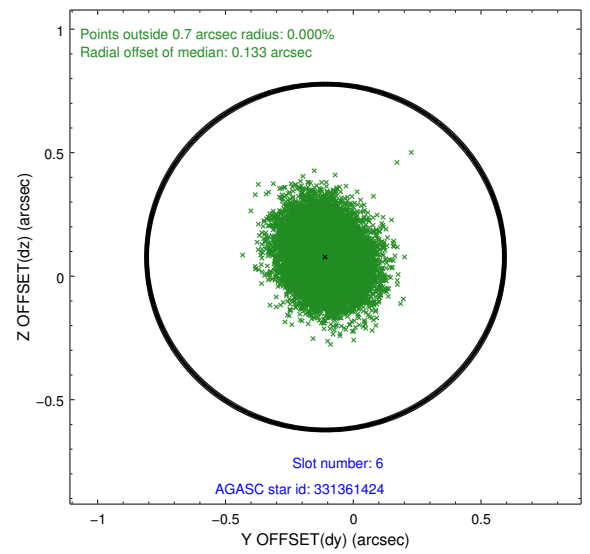
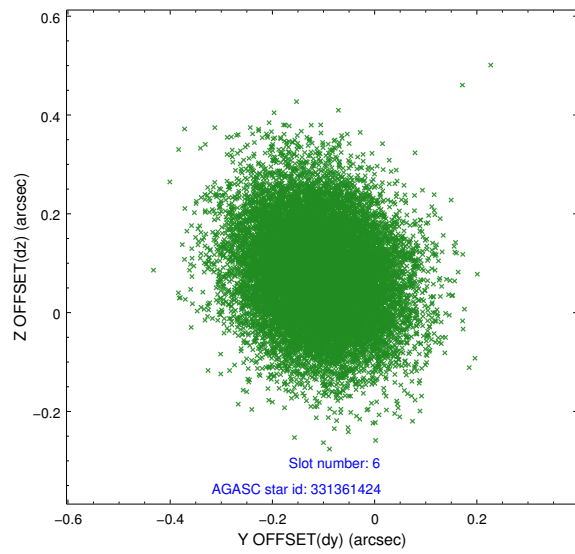
2.4.3 Slot 5



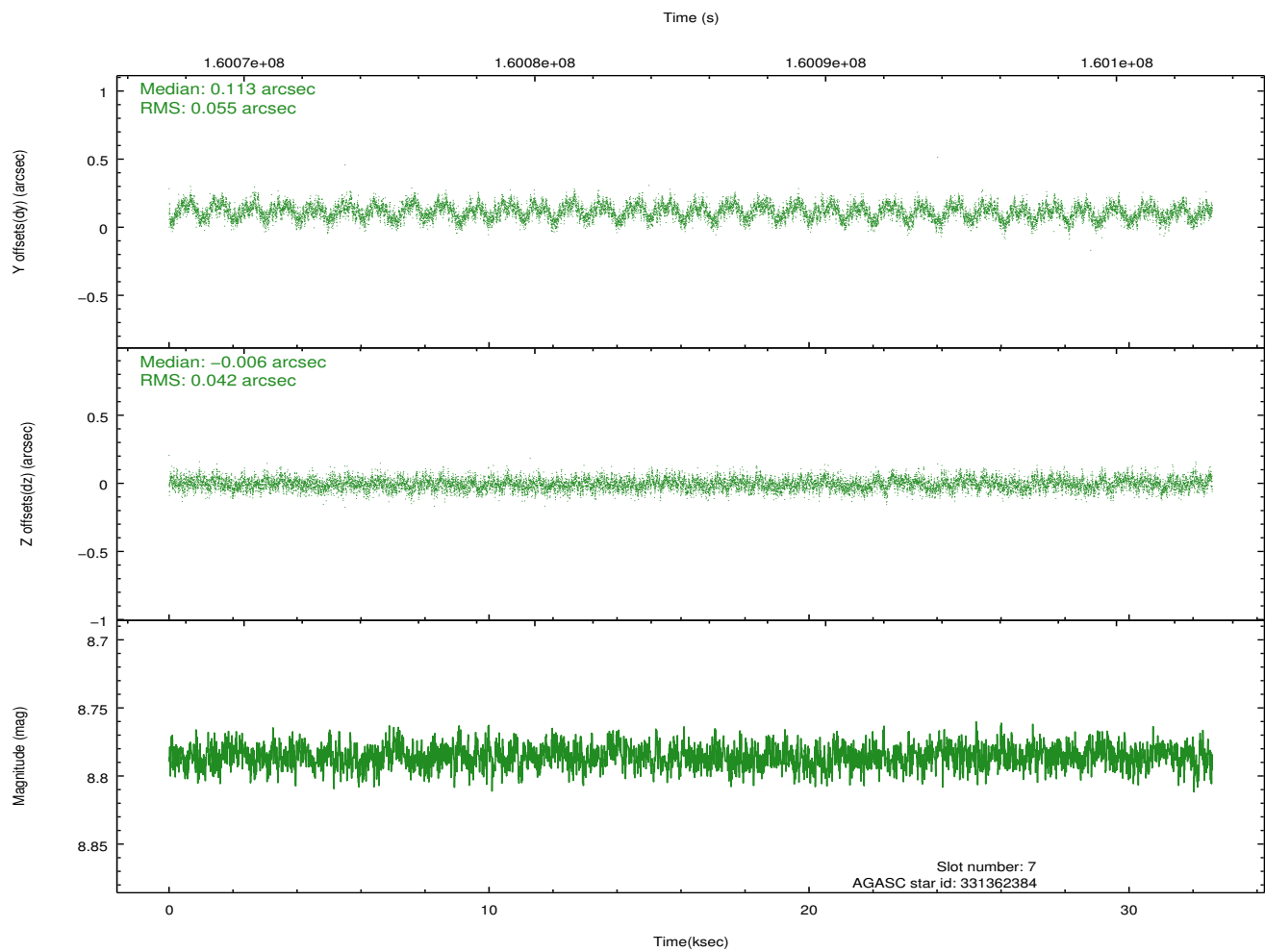
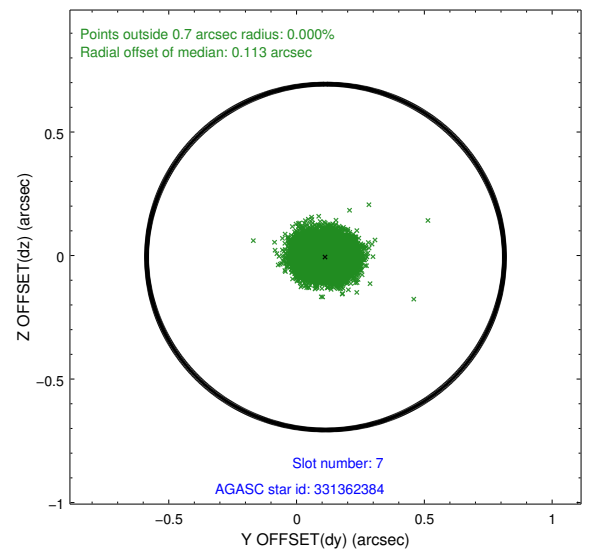
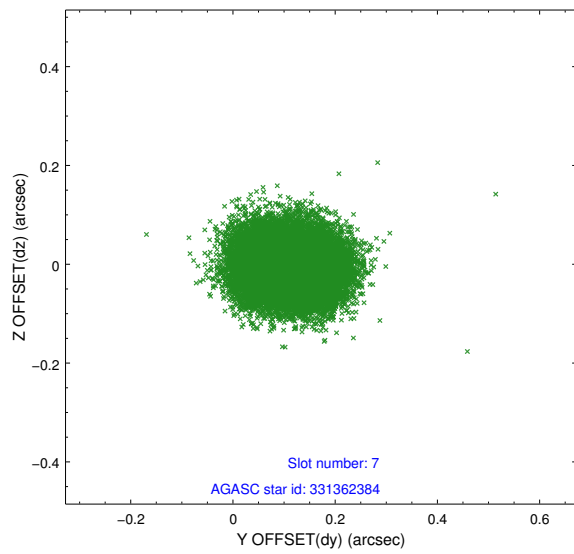
Time (s)



2.4.4 Slot 6

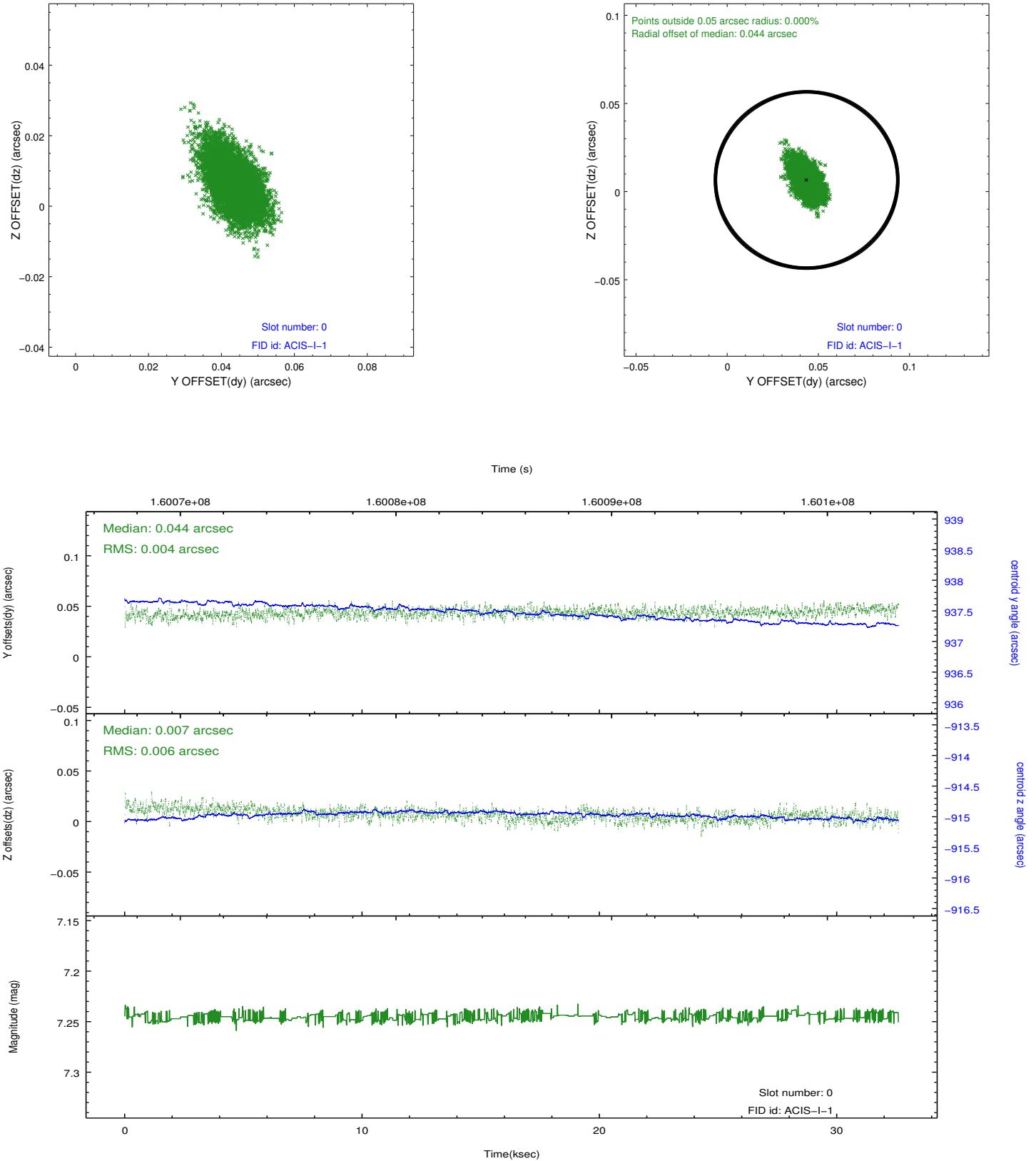


2.4.5 Slot 7

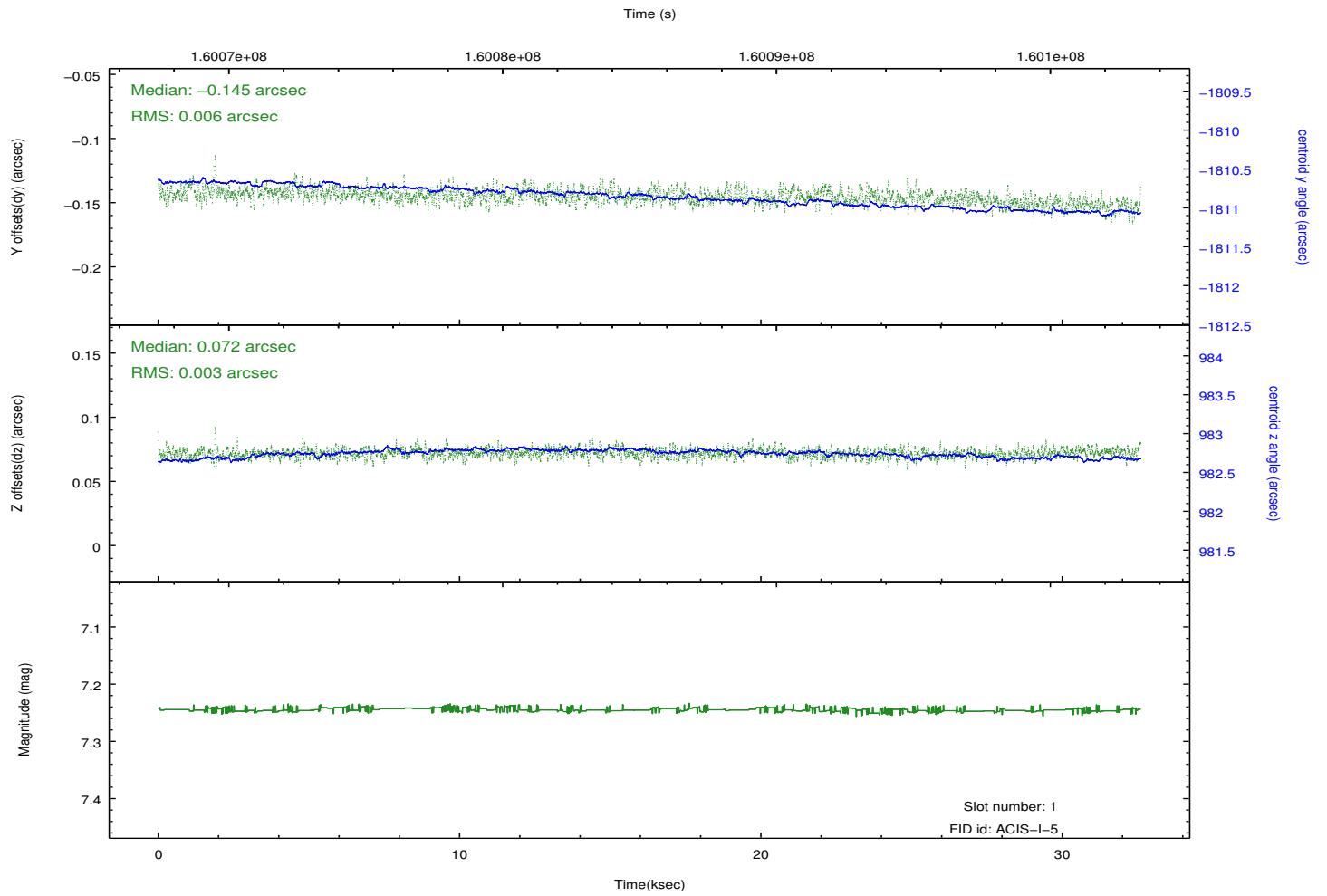
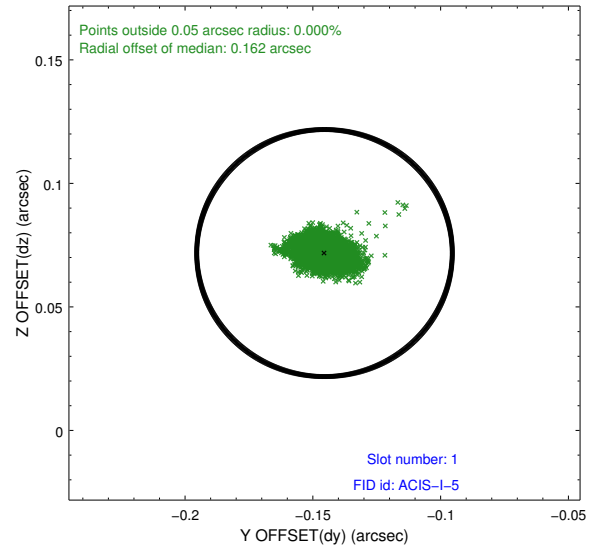
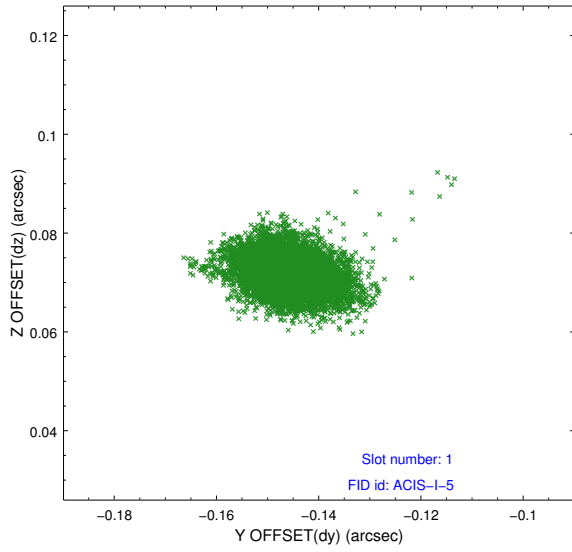


2.5 FID Slots

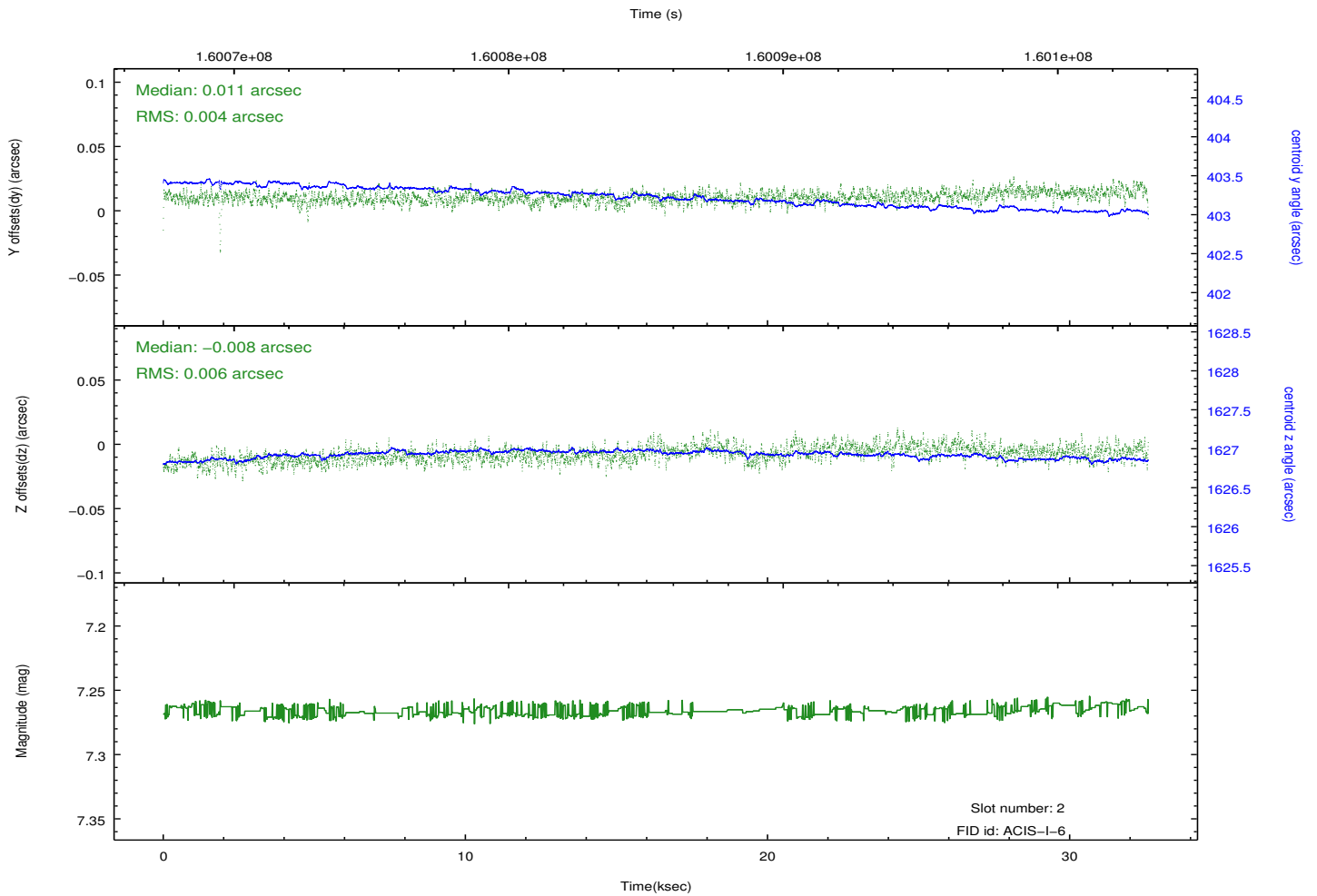
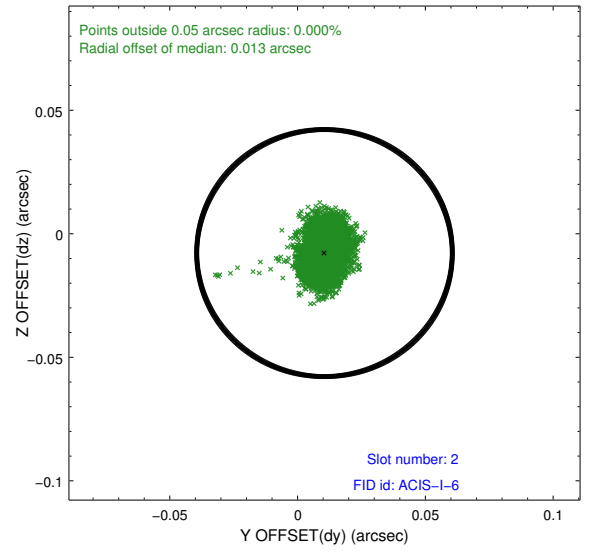
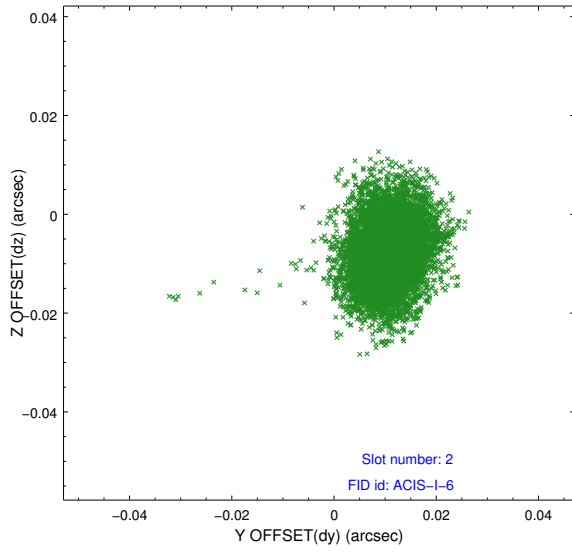
2.5.1 Slot 0



2.5.2 Slot 1



2.5.3 Slot 2



A Summary

A.1 Status

V&V Scientist	Jen Lauer
V&V Date (YYYY-MM-DD)	2012.11.01
V&V Edition	1
V&V Disposition and Status	OK
V&V Charge Time	32.115

A.2 Comments

Joint Proposal: CX0-HST