

V&V Reference Report

L2 ASCDS Version : 8.4.5

Observation 3190 - L2 Version 3
Chandra X-Ray Center

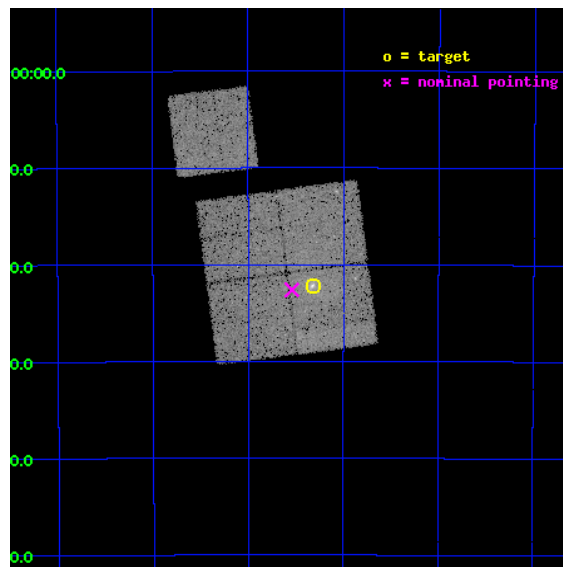
L2 Processing Date : Oct 11 2012

Contents

1	Front	2
2	OBI	3
2.1	OBI	3
2.1.1	Images	3
2.1.2	Bias	3
2.1.3	Parameters	4
2.1.4	Events	4
2.2	Compared Parameters	5
2.3	Aspect	6
2.4	Star Slots	9
2.4.1	Slot 3	9
2.4.2	Slot 4	10
2.4.3	Slot 5	11
2.4.4	Slot 6	12
2.4.5	Slot 7	13
2.5	FID Slots	14
2.5.1	Slot 0	14
2.5.2	Slot 1	15
2.5.3	Slot 2	16
A	Summary	17
A.1	Status	17
A.2	Comments	17

1 Front

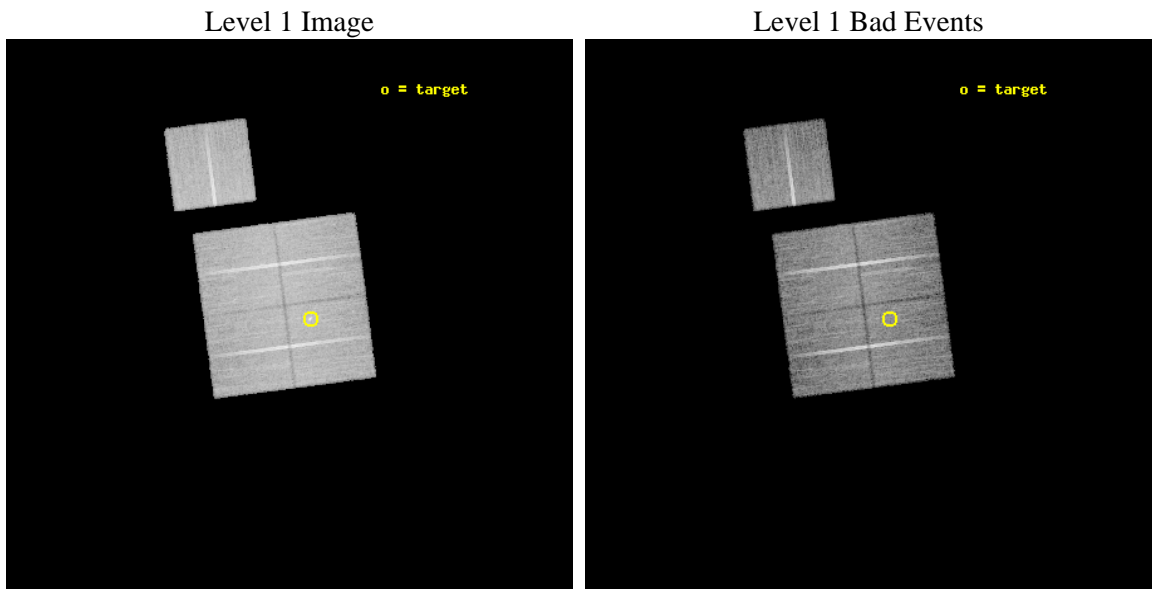
seq_num	800190	Sequence number
obs_id	3190	Observation id
title	COLLIDING GROUPS	Proposal title
observer	Dr. Stephen Murray	Principal investigator
object	NGC6861	Source name
dtcycle	0	
cycle	P	events from which exps? Prim/Second/Both
ra_targ	301.829583	Observer's specified target RA [deg]
dec_targ	-48.37	Observer's specified target Dec [deg]
ra_nom	301.88533754381	Nominal RA [deg]
dec_nom	-48.376815763231	Nominal Dec [deg]
roll_nom	352.55946937389	Nominal Roll [deg]
revision	3	Processing version of data
ontime	23113.517985195	Sum of GTIs [s]
livetime	22811.522856794	Livetime [s]
ontime0	23113.51799503	Sum of GTIs [s]
ontime1	23113.517985195	Sum of GTIs [s]
ontime2	23110.377034843	Sum of GTIs [s]
ontime3	23110.377024829	Sum of GTIs [s]
ontime6	23116.658995241	Sum of GTIs [s]
l2events	75497	Number of level 2 events



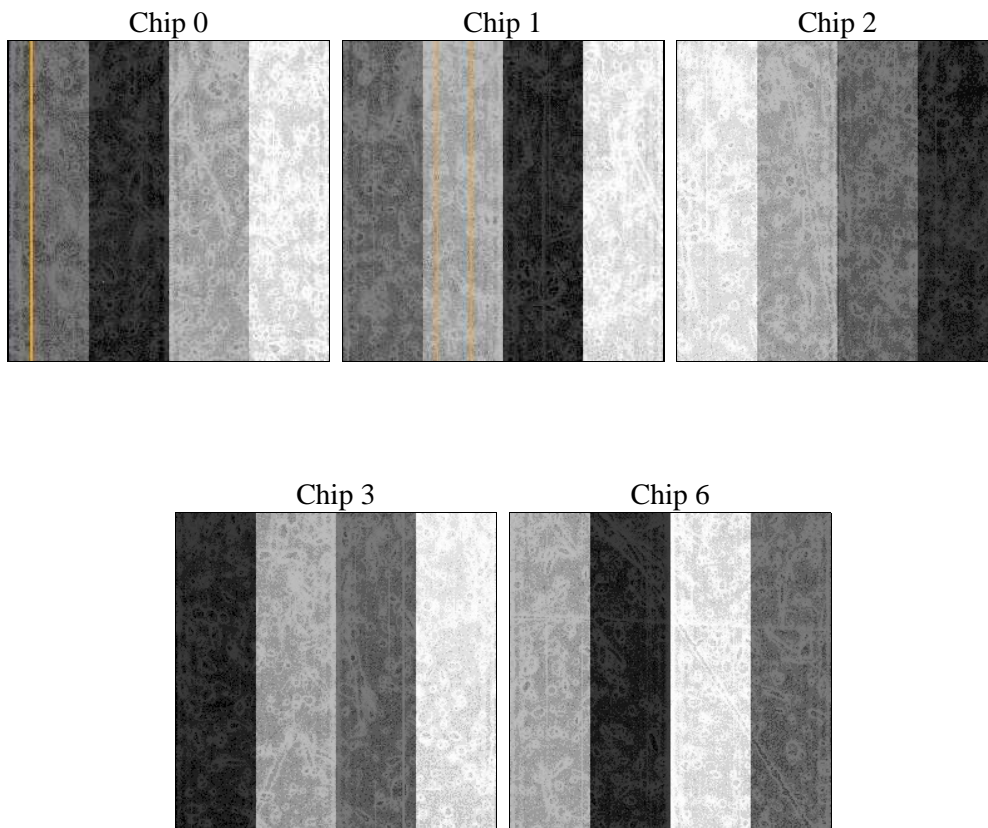
2 OBI

2.1 OBI

2.1.1 Images



2.1.2 Bias



2.1.3 Parameters

obi_num	0	Obi number	sched_exp_time	23000.000000	[s] Scheduled observation exposure time
ascdsver	8.4.5	Processing system revision	ontime	23113.517985195	Sum of GTIs [s]
caldbver	4.5.2	 	ontime0	23113.51799503	Sum of GTIs [s]
date	2012-10-11T21:17:00	Date and time of file creation	ontime1	23113.517985195	Sum of GTIs [s]
revision	3	Processing version of data	ontime2	23110.377034843	Sum of GTIs [s]
			ontime3	23110.377024829	Sum of GTIs [s]
			ontime6	23116.658995241	Sum of GTIs [s]
			l1events	654015	Number of level 1 events

2.1.4 Events

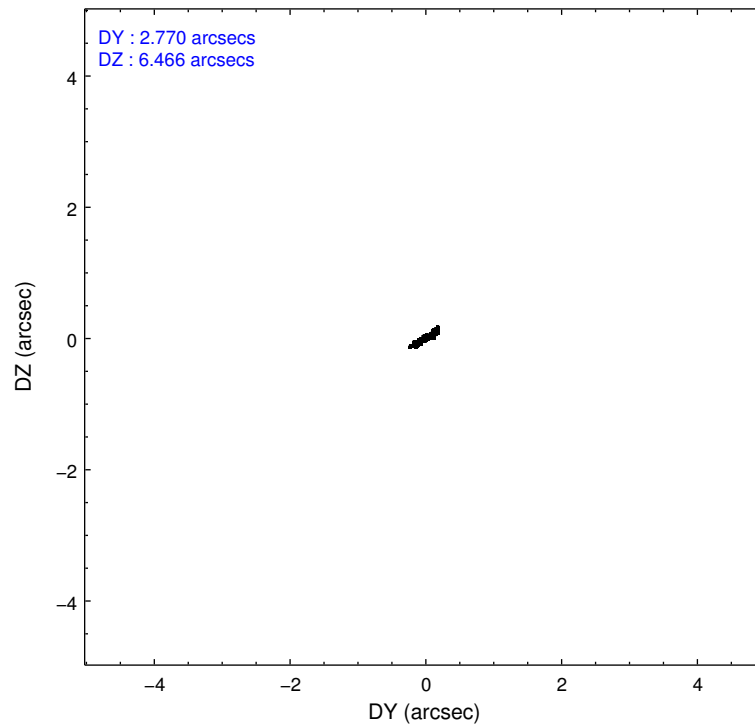
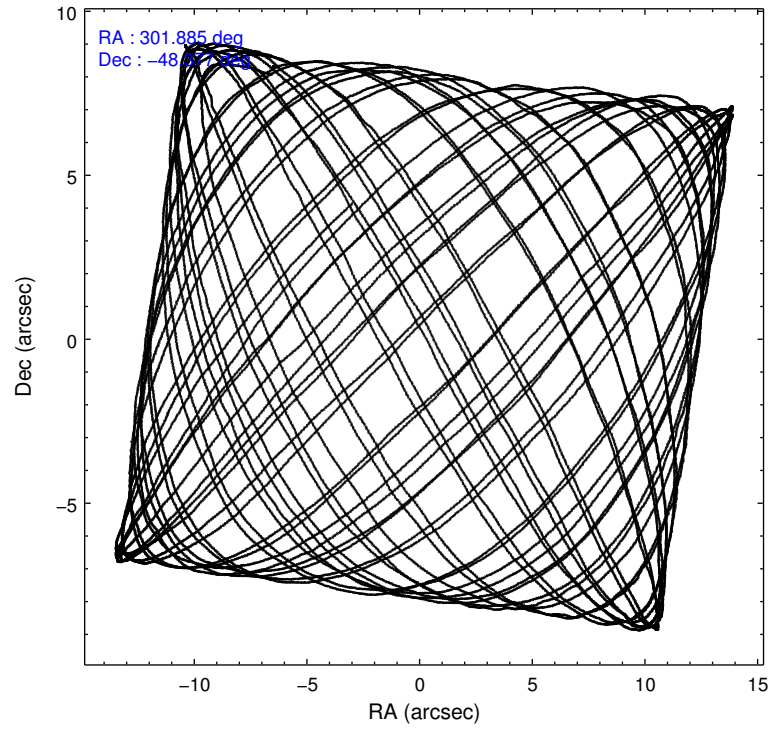
	ccd 0	ccd 1	ccd 2	ccd 3	ccd 6
level 1 events	121269	128498	138744	133476	132028
rejected events	103857	106630	120993	116494	115184
rejected %	85%	82%	87%	87%	87%

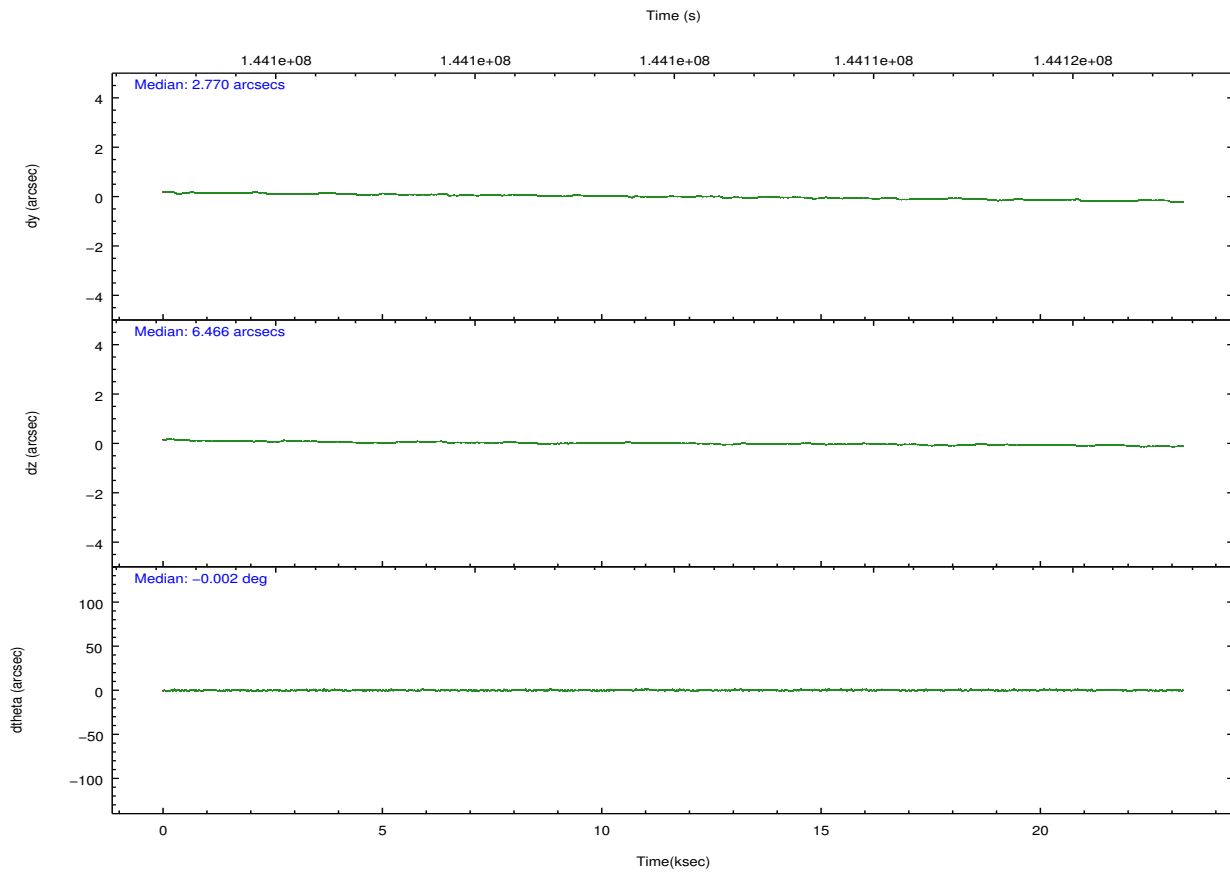
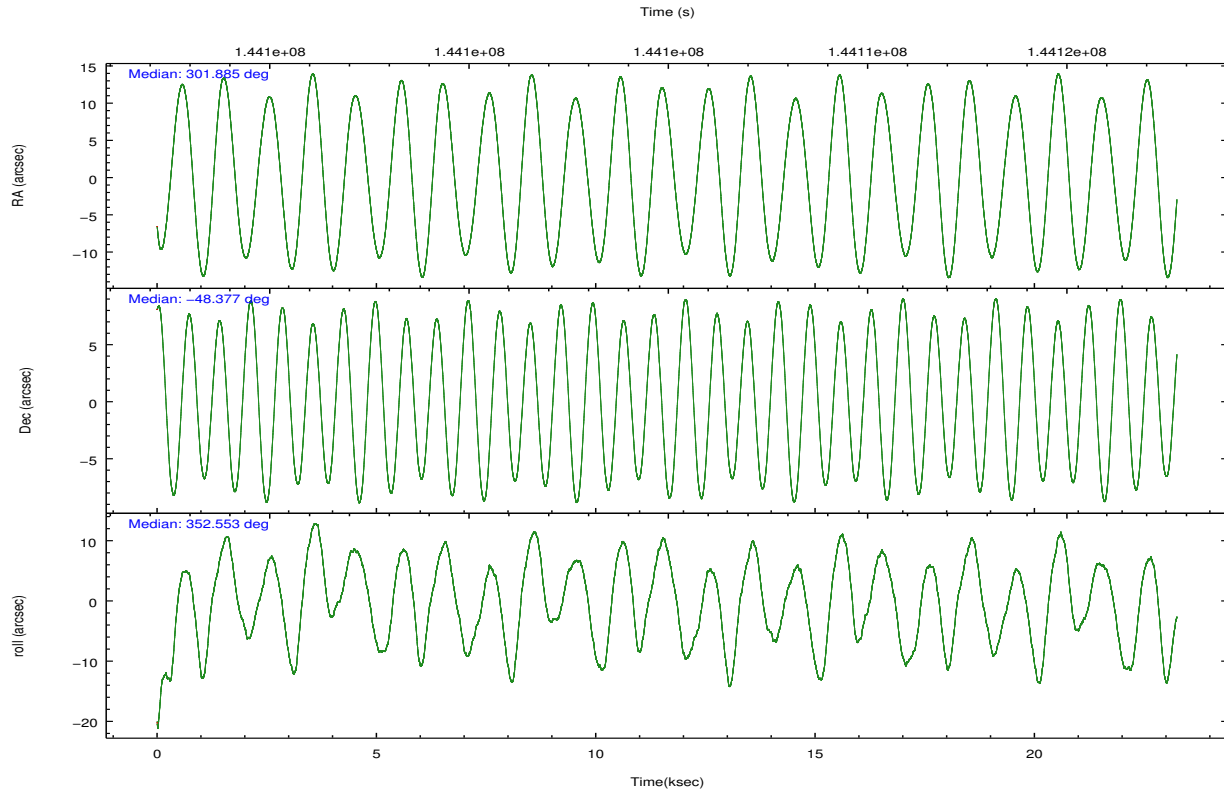
	ccd 0	ccd 1	ccd 2	ccd 3	ccd 6
grade 0 events	7139	10608	7662	7469	6547
	5%	8%	5%	5%	4%
grade 1 events	68	82	56	66	44
	0%	0%	0%	0%	0%
grade 2 events	3785	3938	3857	3294	3510
	3%	3%	2%	2%	2%
grade 3 events	1653	1891	1443	1530	1583
	1%	1%	1%	1%	1%
grade 4 events	1553	1794	1580	1503	1528
	1%	1%	1%	1%	1%
grade 5 events	3877	4306	3689	4352	4335
	3%	3%	2%	3%	3%
grade 6 events	3286	3637	3210	3187	3682
	2%	2%	2%	2%	2%
grade 7 events	99908	102242	117247	112075	110799
	82%	79%	84%	83%	83%

2.2 Compared Parameters

Parameter	Planned	Actual	Parameter	Planned	Actual
Instrument	ACIS	ACIS	Obspar format version number	7	7
Detector	ACIS-01236	ACIS-01236	Obspar file type	PREDICTED	ACTUAL
Grating	NONE	NONE	Obspar update status	NONE	UPDATED
Data mode	VFAINT	VFAINT	Number of optional ACIS chips dropped	0	0
Observation mode	POINTING	POINTING	On-chip summing requested	N	N
[deg] Pointing RA	301.847319	301.8853375438128	Subarray requested	NONE	NONE
[deg] Pointing Dec	-48.387387	-48.3768157632305	Alternating exposures requested	N	N
[deg] Pointing Roll	352.322357	352.5594693738905	[s] Primary exposure time	0.000000	3.1
[mm] SIM focus pos	-0.782348	-0.7809083437167272			
[mm] SIM defocus	0	0.001439871863259334			
[mm] SIM translation stage pos	-240.592463	-240.5872882603717			
[mm] SIM translation stage offset	7	6.994835257442048			
[s] Observation start time (MET)	144093594.184000	144092608.98779			
Observation start date	2002-07-26T17:58:50	2002-07-26T17:43:28			
[s] Observation end time (MET)	144116594.184000	144117334.55131			
Observation end date	2002-07-27T00:22:10	2002-07-27T00:35:34			
Read mode	TIMED	TIMED			

2.3 Aspect



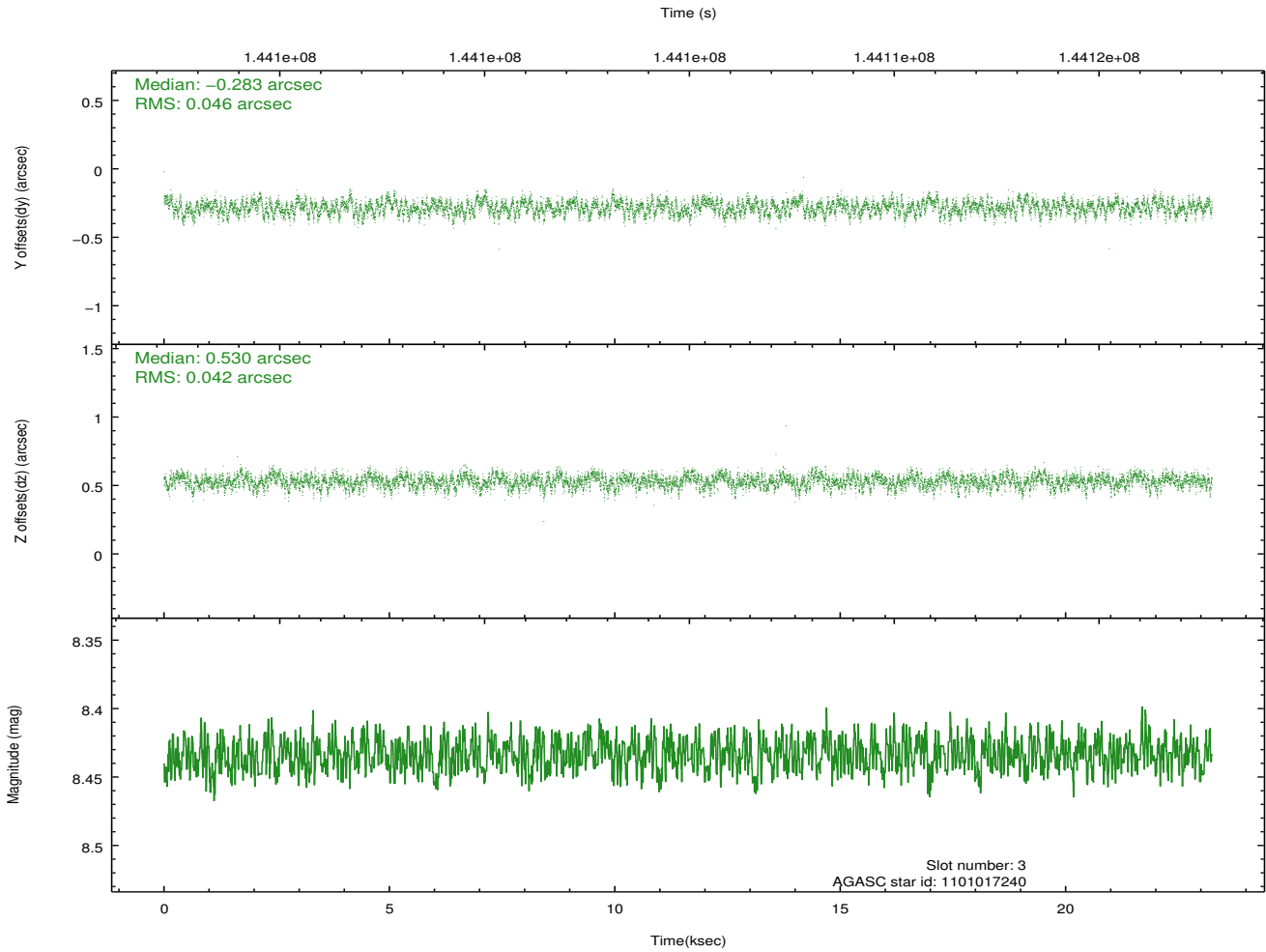
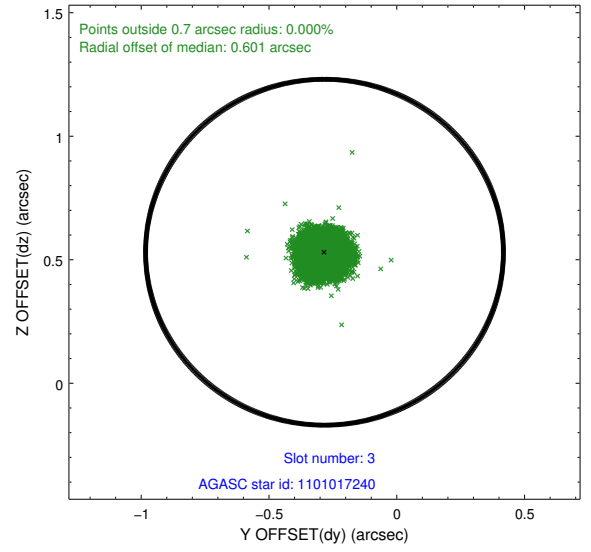
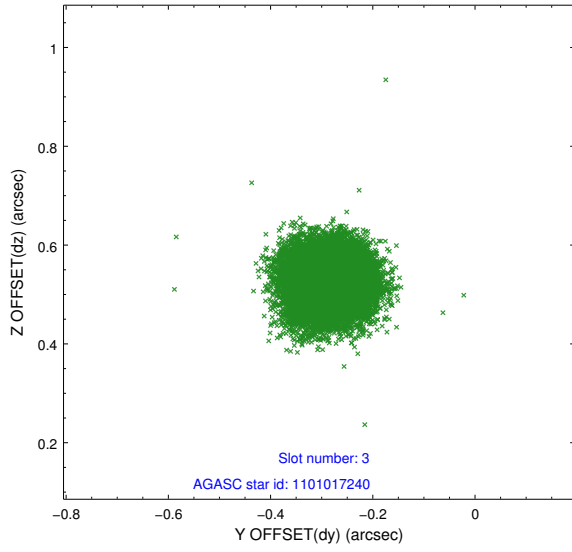


Slot Statistics

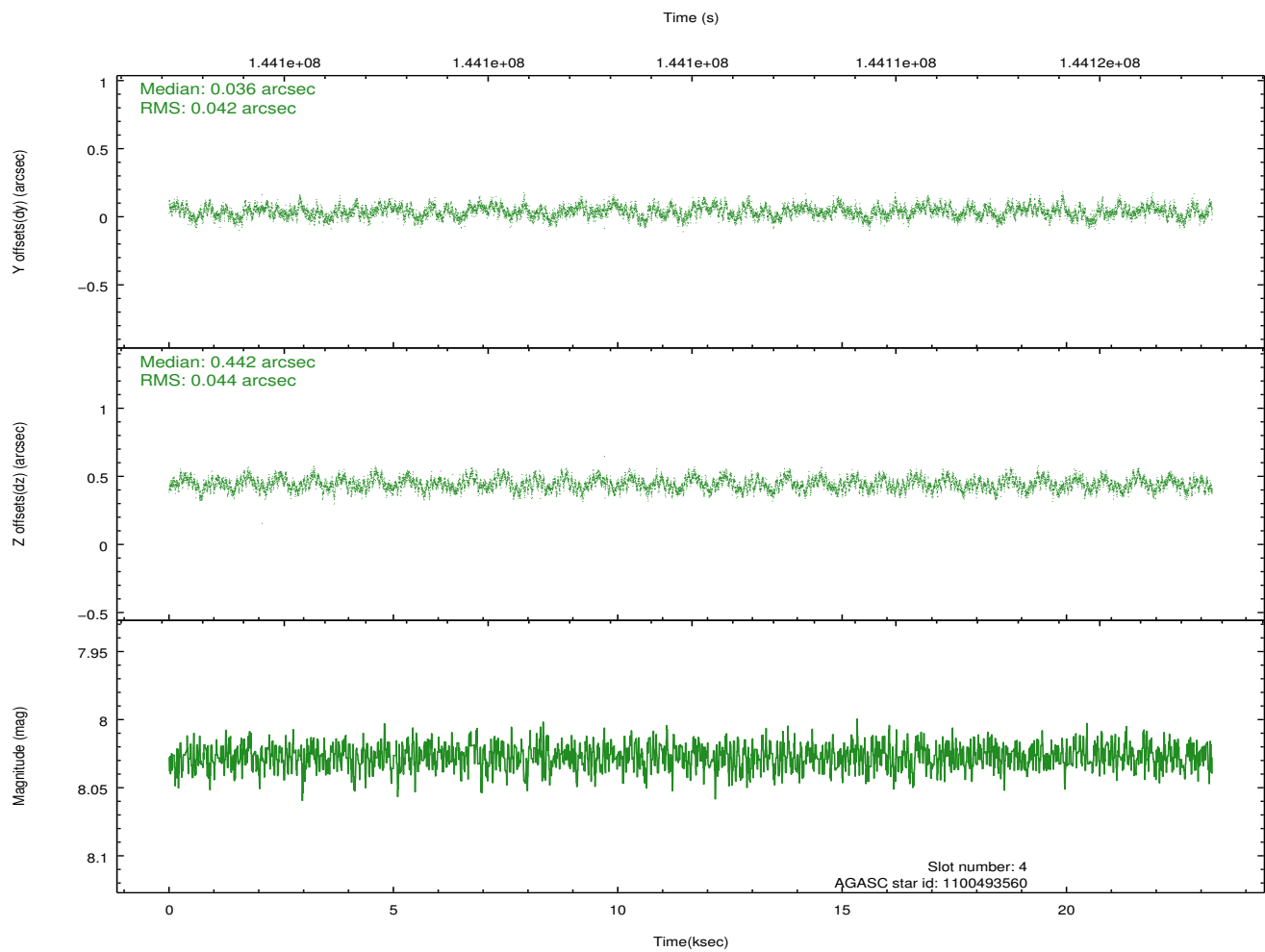
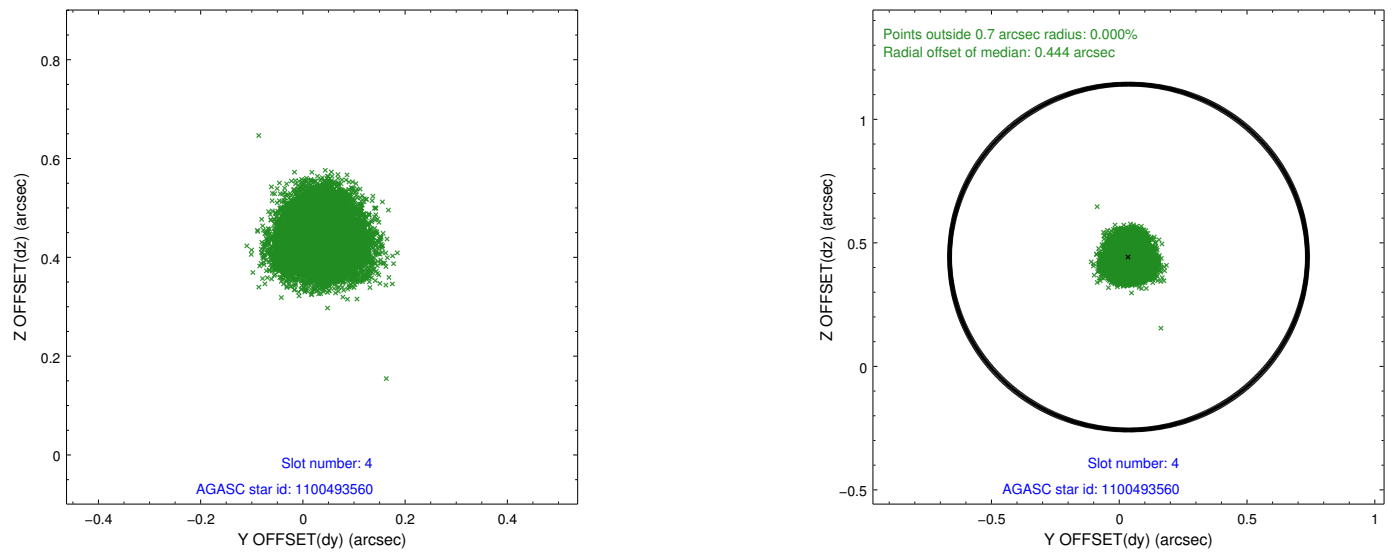
slot	status	id	mag	n_pts	med_dy	med_dz	dr1	dr2	ra	dec	mean_y	mean_z
0	FID	ACIS-I-1	7.28	5670	-0.038	0.048	0.007	0.013	0.000000	0.000000	937.13	-686.00
1	FID	ACIS-I-5	7.24	5670	-0.063	0.012	0.007	0.013	0.000000	0.000000	-1810.93	1211.40
2	FID	ACIS-I-6	7.25	5670	0.011	0.010	0.007	0.011	0.000000	0.000000	402.56	1856.06
3	GUIDE	1101017240	8.43	11339	-0.283	0.530	0.067	0.105	301.056519	-48.786840	-1664.72	-1685.22
4	GUIDE	1100493560	8.03	11340	0.036	0.442	0.066	0.101	301.193860	-48.160726	-1662.51	592.41
5	GUIDE	1100497552	9.25	11317	0.104	-0.112	0.096	0.167	302.848311	-48.379409	2370.99	332.87
6	GUIDE	1100888904	8.88	11332	0.291	-0.858	0.077	0.124	300.761834	-48.893333	-2298.80	-2167.57
7	GUIDE	1101018712	9.44	11331	-0.142	-0.005	0.104	0.166	302.763008	-48.818100	2360.67	-1259.59

2.4 Star Slots

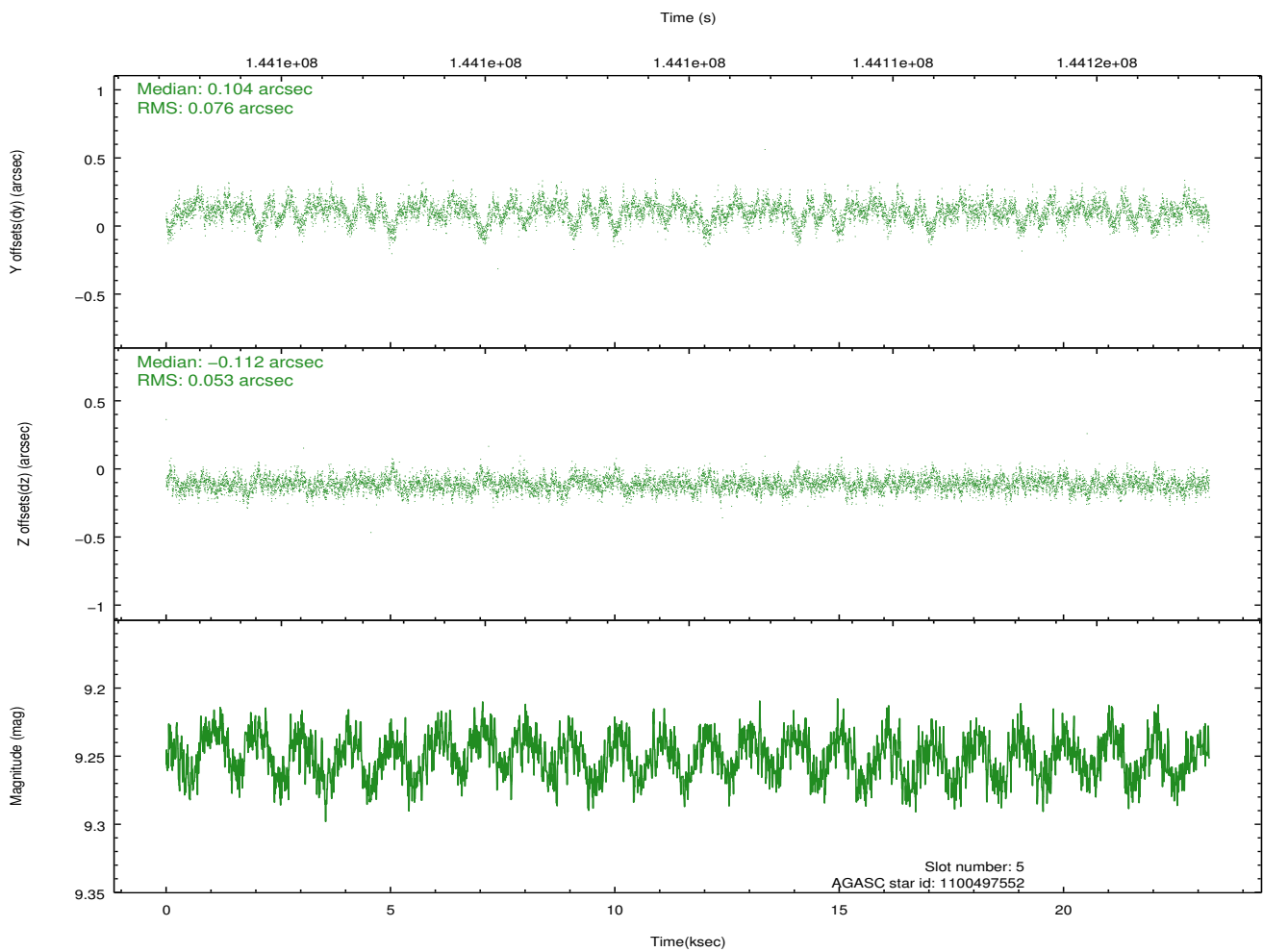
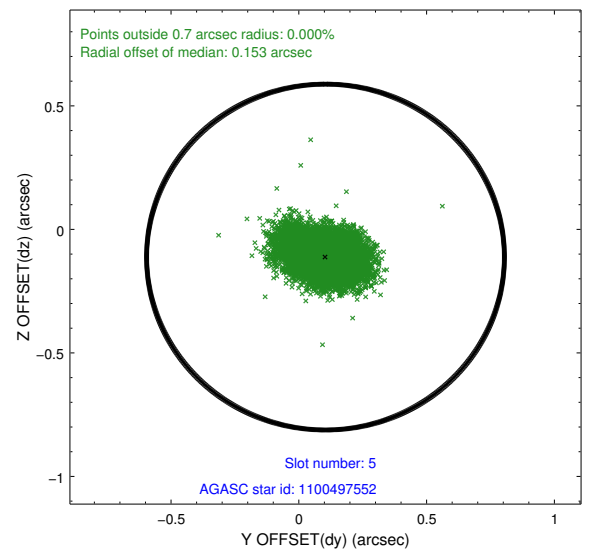
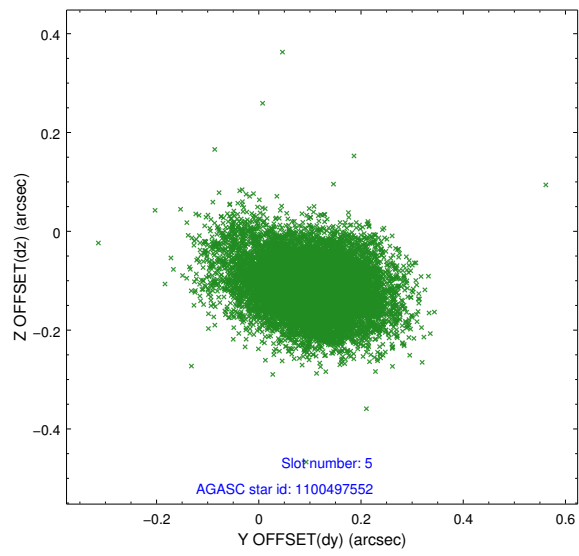
2.4.1 Slot 3



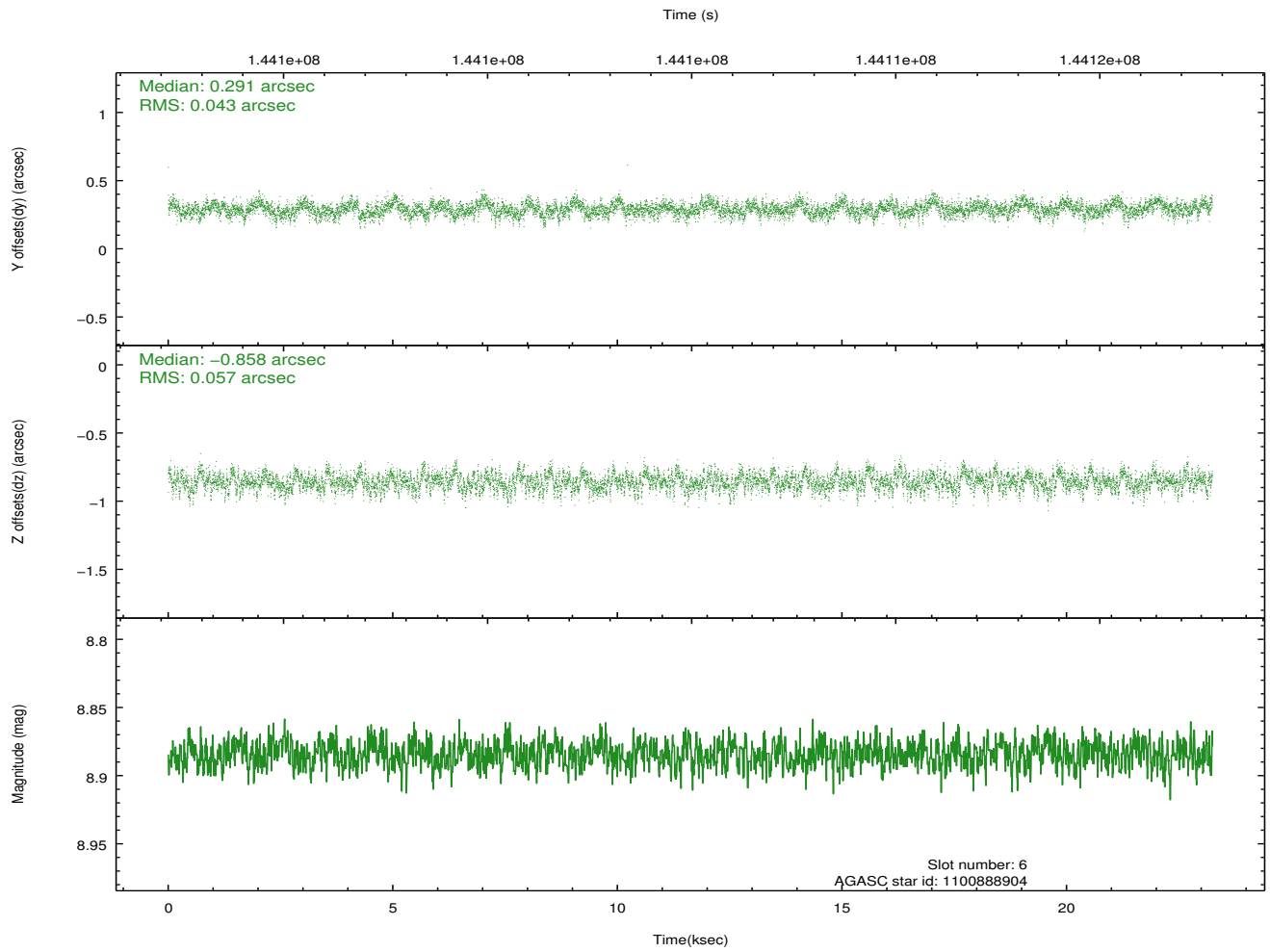
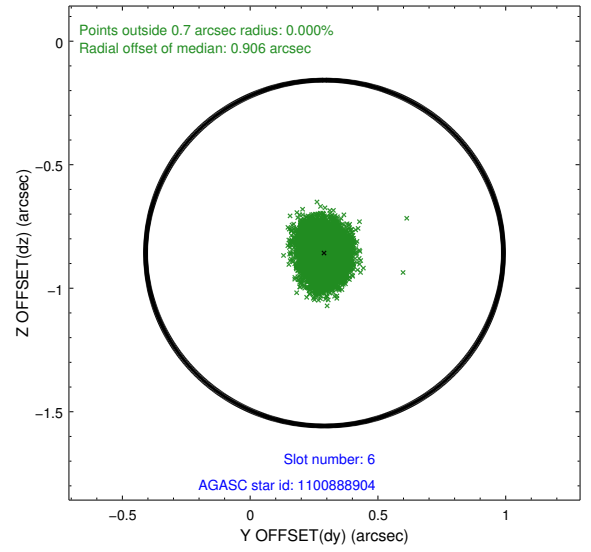
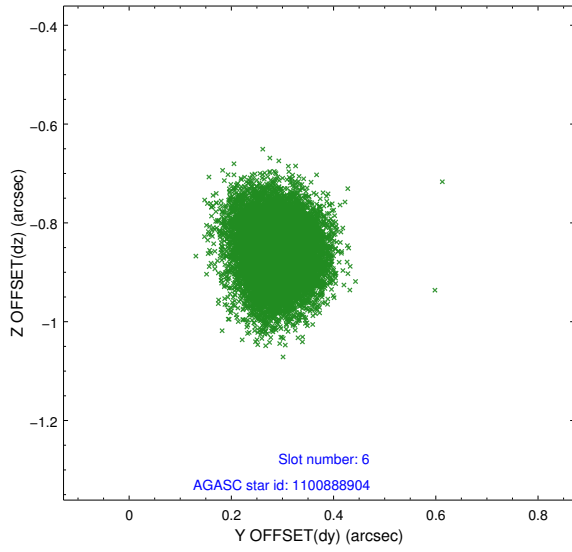
2.4.2 Slot 4



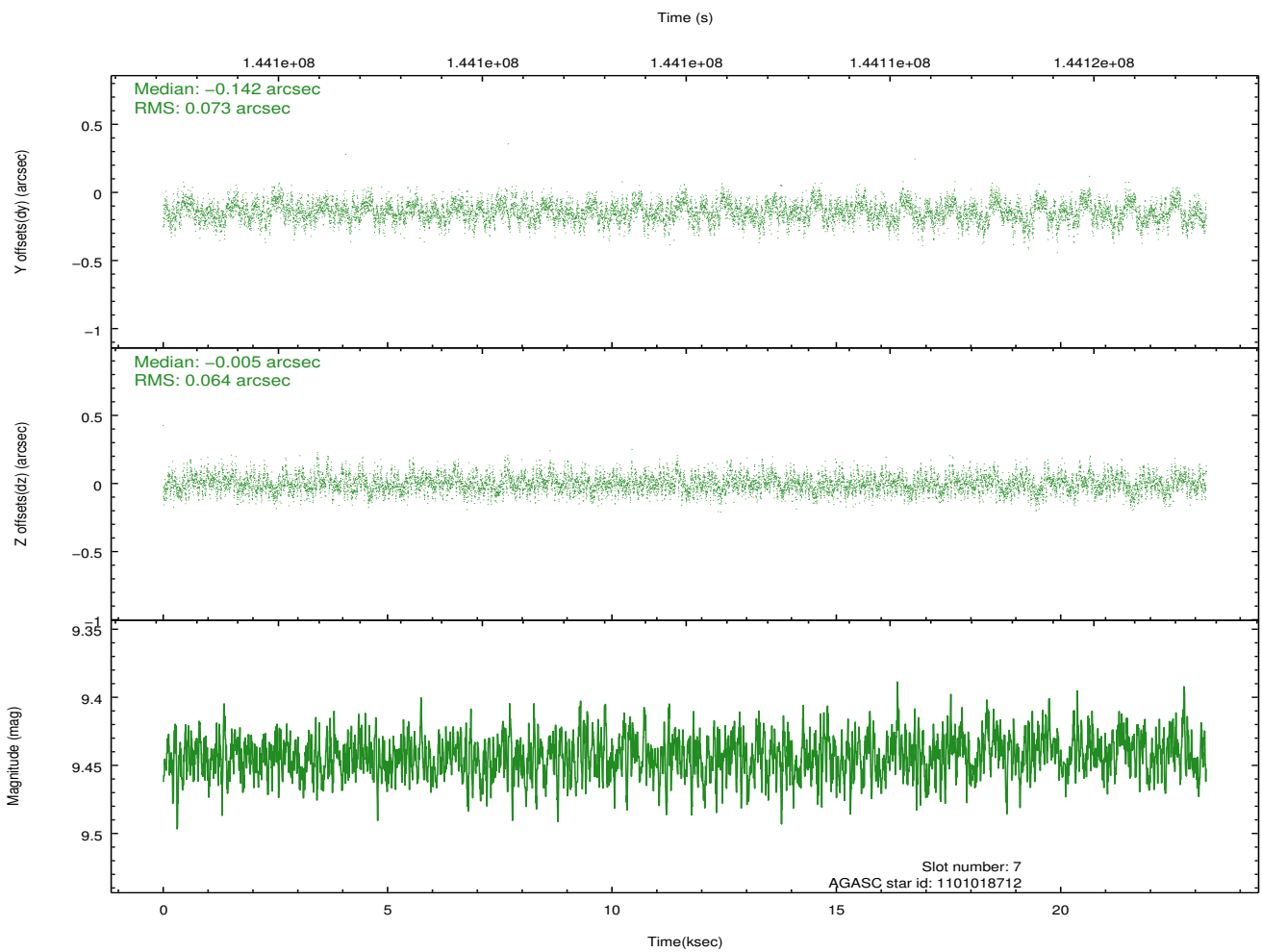
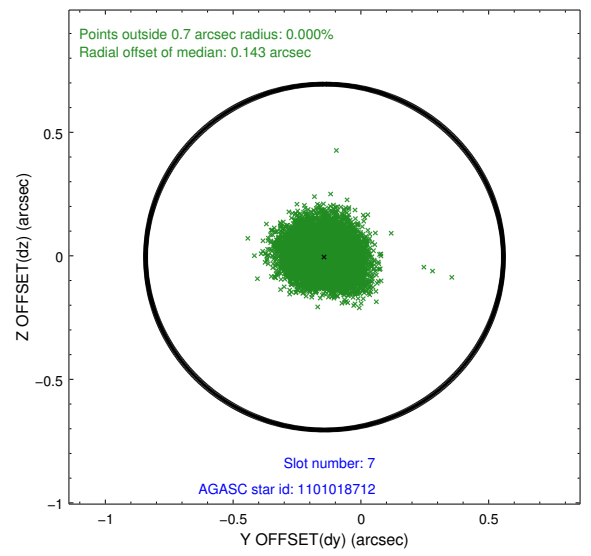
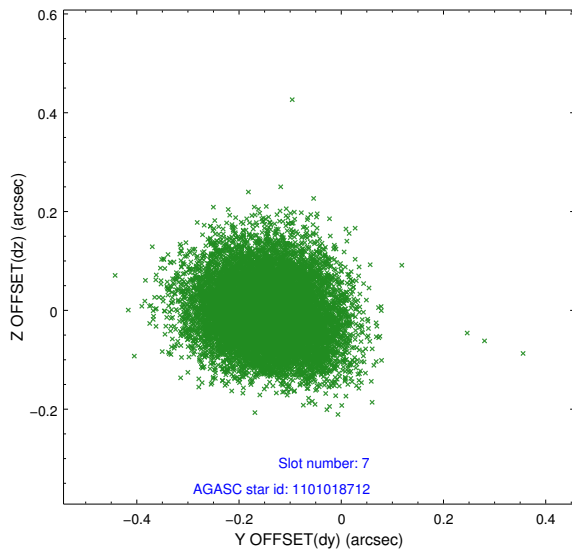
2.4.3 Slot 5



2.4.4 Slot 6

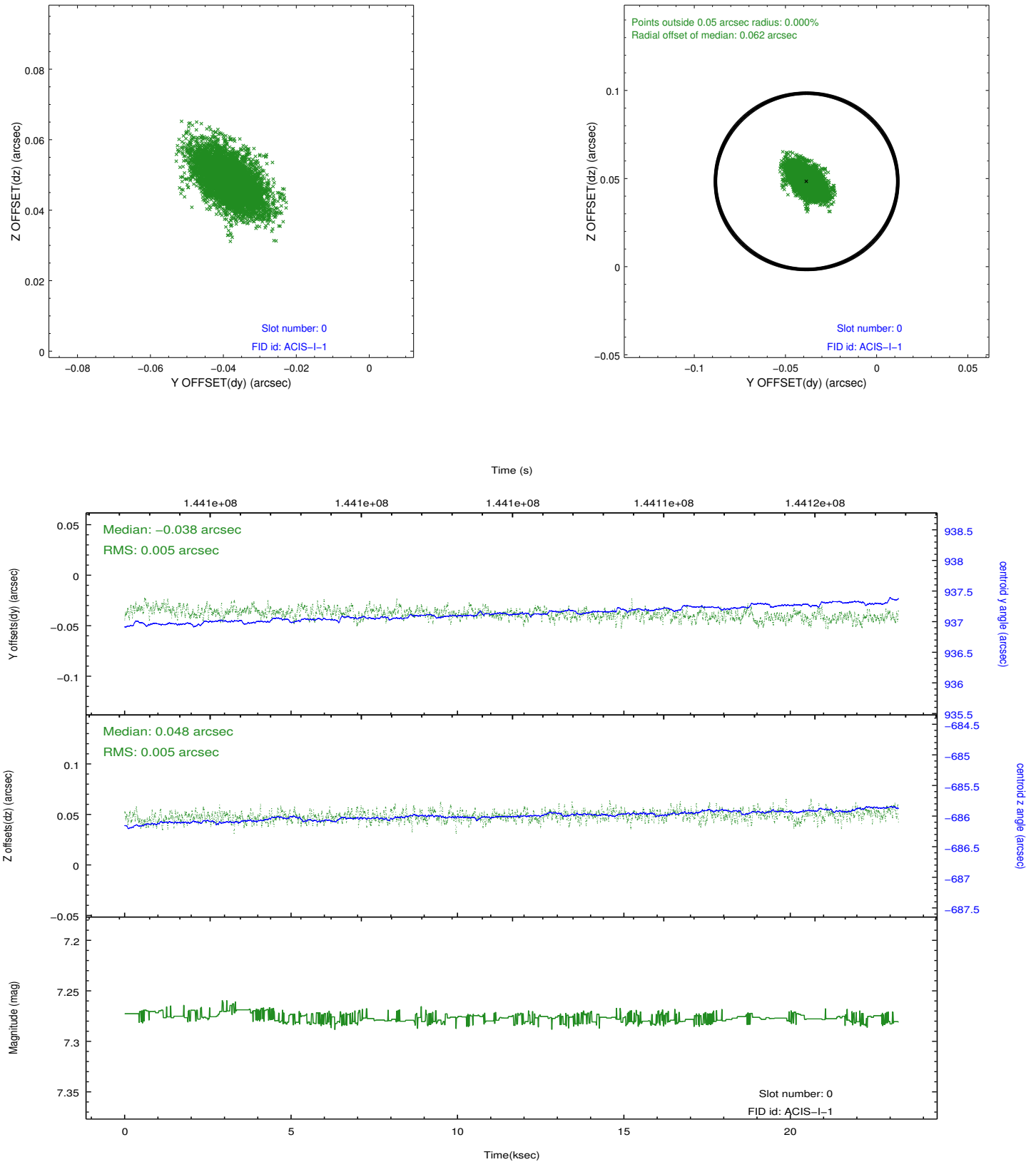


2.4.5 Slot 7

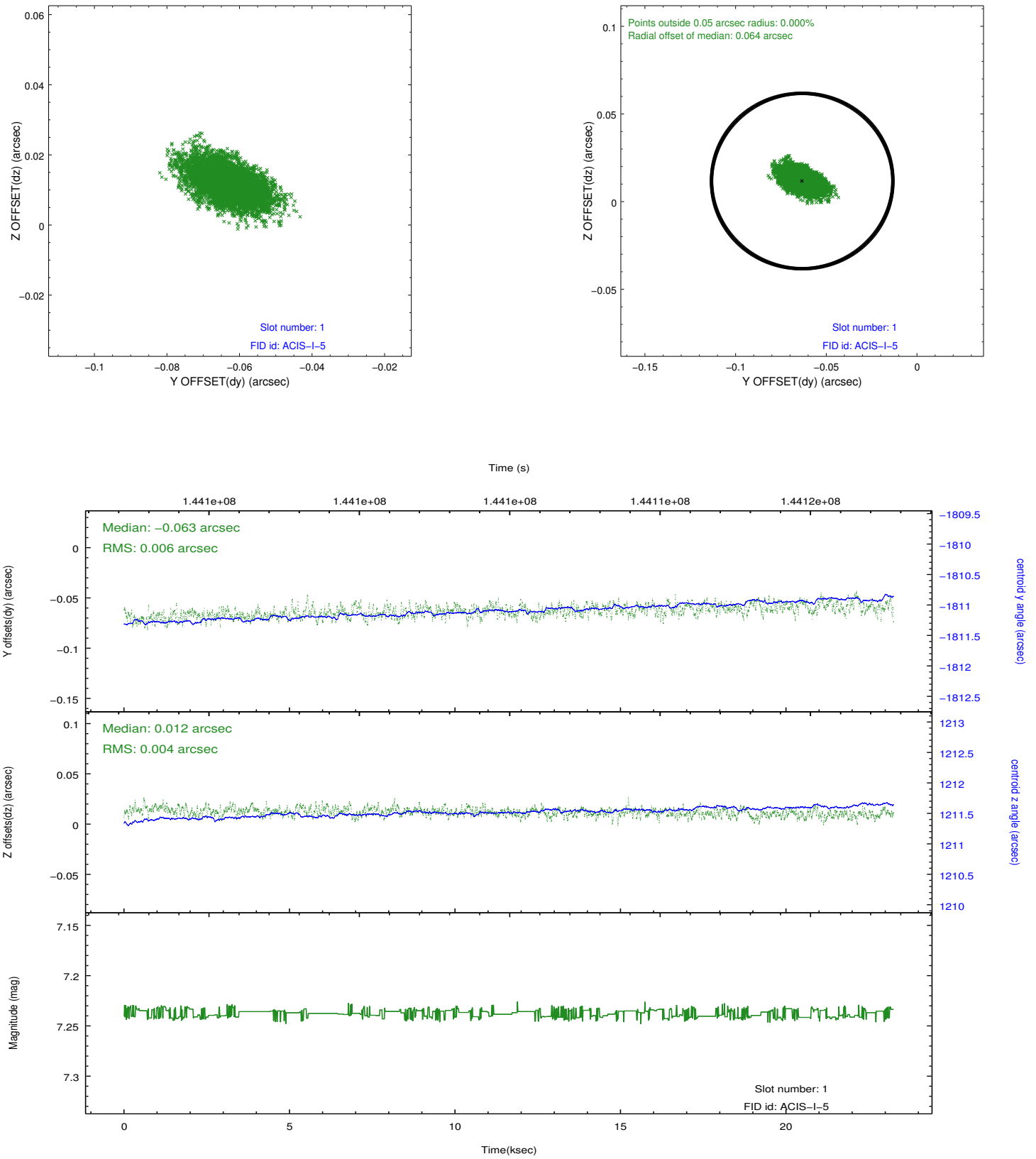


2.5 FID Slots

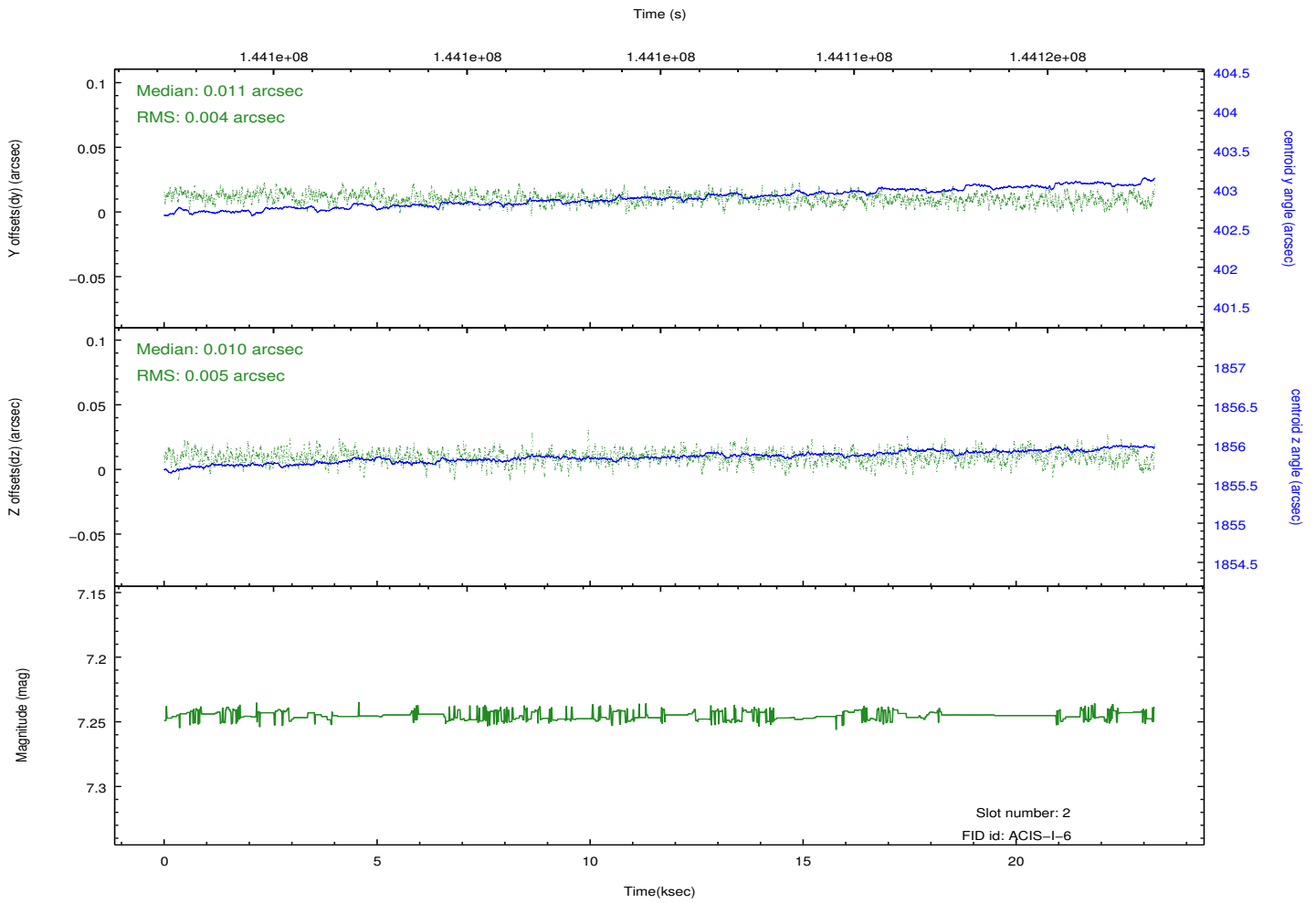
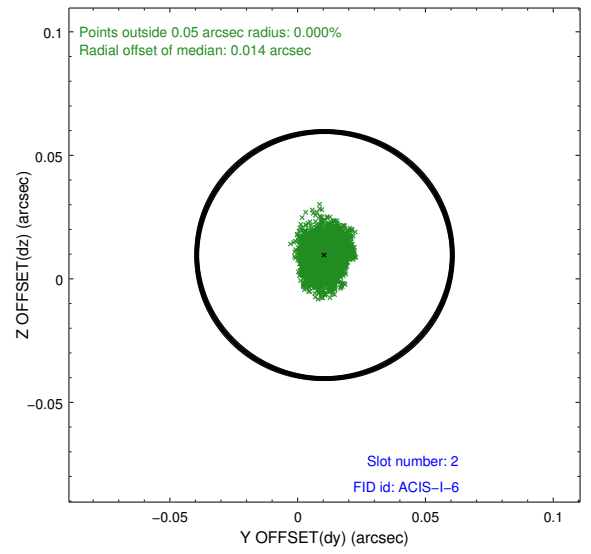
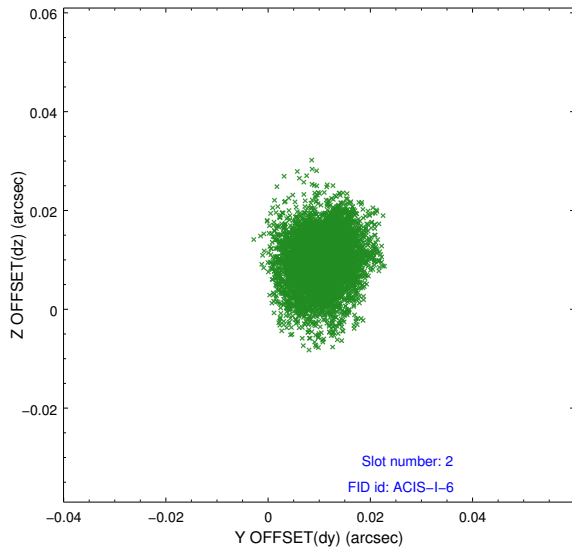
2.5.1 Slot 0



2.5.2 Slot 1



2.5.3 Slot 2



A Summary

A.1 Status

V&V Scientist	Jen Lauer
V&V Date (YYYY-MM-DD)	2012.10.22
V&V Edition	1
V&V Disposition and Status	OK
V&V Charge Time	23.113

A.2 Comments