

V&V Reference Report

L2 ASCDS Version : 8.4.5

Observation 3210 - L2 Version 4
Chandra X-Ray Center

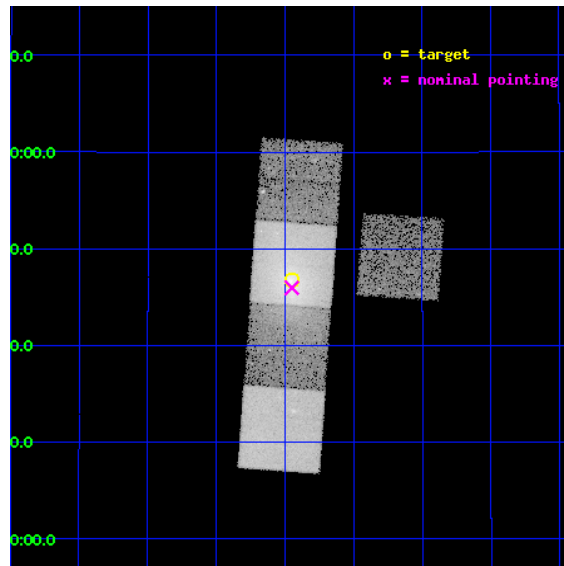
L2 Processing Date : Oct 17 2012

Contents

1	Front	2
2	OBI	3
2.1	OBI	3
2.1.1	Images	3
2.1.2	Bias	3
2.1.3	Parameters	4
2.1.4	Events	4
2.2	Compared Parameters	5
2.3	Aspect	6
2.4	Star Slots	9
2.4.1	Slot 3	9
2.4.2	Slot 4	10
2.4.3	Slot 5	11
2.4.4	Slot 6	12
2.4.5	Slot 7	13
2.5	FID Slots	14
2.5.1	Slot 0	14
2.5.2	Slot 1	15
2.5.3	Slot 2	16
A	Summary	17
A.1	Status	17
A.2	Comments	17

1 Front

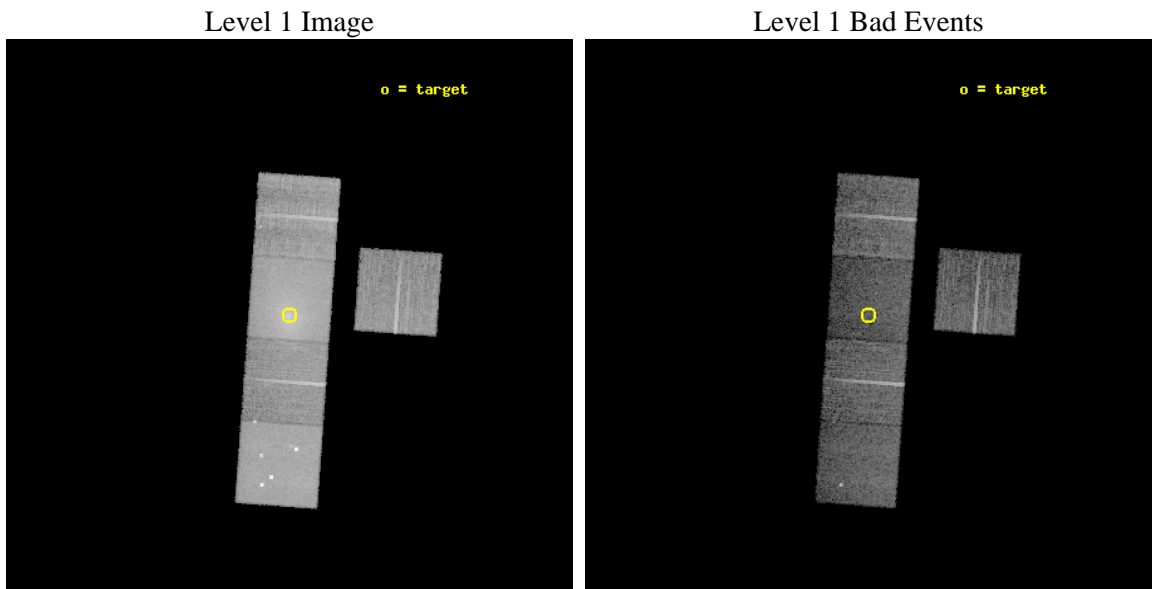
seq_num	800210	Sequence number
obs_id	3210	Observation id
title	CLUSTER DARK MATTER ON THE SMALLEST SCALES	Proposal title
observer	Dr. DAVID BUOTE	Principal investigator
object	A2589	Source name
dtcycle	0	
cycle	P	events from which exps? Prim/Second/Both
ra_targ	350.988333	Observer's specified target RA [deg]
dec_targ	16.778611	Observer's specified target Dec [deg]
ra_nom	350.98745988711	Nominal RA [deg]
dec_nom	16.766205933913	Nominal Dec [deg]
roll_nom	274.12143867072	Nominal Roll [deg]
revision	4	Processing version of data
ontime	13856.999973327	Sum of GTIs [s]
liveltime	13675.9480673	Livetime [s]
ontime3	13856.999973327	Sum of GTIs [s]
ontime5	13853.858973175	Sum of GTIs [s]
ontime6	13856.999973327	Sum of GTIs [s]
ontime7	13856.999973327	Sum of GTIs [s]
ontime8	13850.718002945	Sum of GTIs [s]
l2events	225690	Number of level 2 events



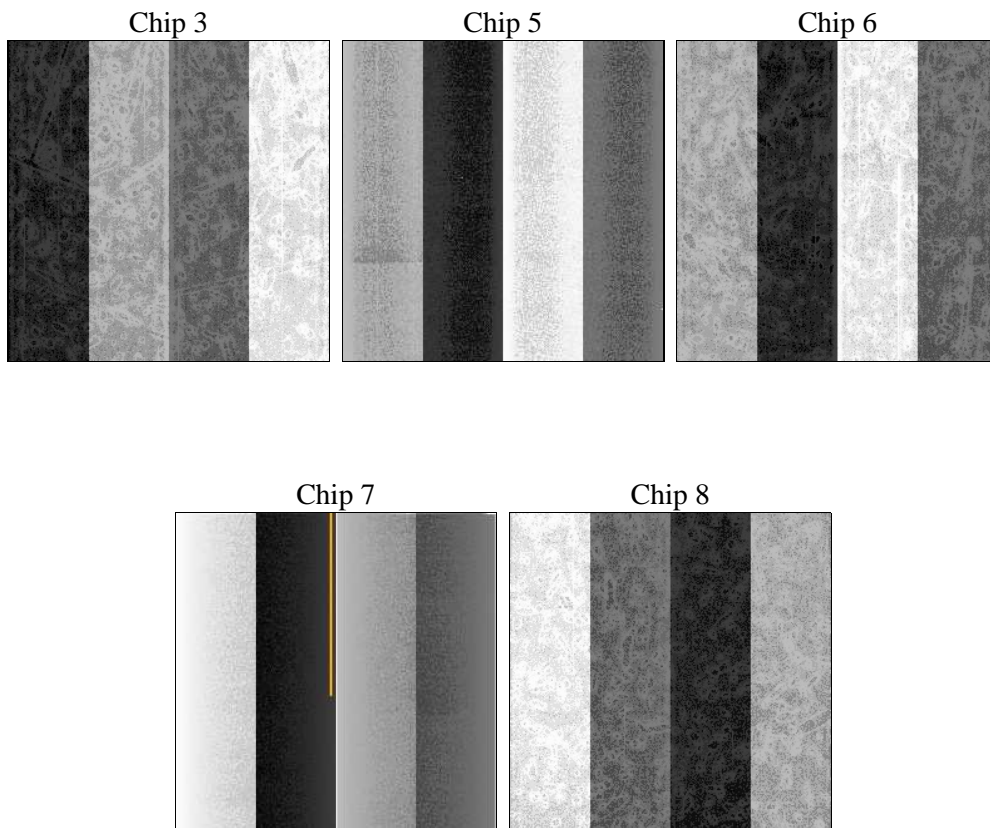
2 OBI

2.1 OBI

2.1.1 Images



2.1.2 Bias



2.1.3 Parameters

obi_num	1	Obi number	sched_exp_time	13751.884000	[s] Scheduled observation exposure time
ascdsver	8.4.5	Processing system revision	ontime	13856.999973327	Sum of GTIs [s]
caldbver	4.5.2	 	ontime3	13856.999973327	Sum of GTIs [s]
date	2012-10-17T00:12:56	Date and time of file creation	ontime5	13853.858973175	Sum of GTIs [s]
revision	4	Processing version of data	ontime6	13856.999973327	Sum of GTIs [s]
			ontime7	13856.999973327	Sum of GTIs [s]
			ontime8	13850.718002945	Sum of GTIs [s]
			l1events	560676	Number of level 1 events

2.1.4 Events

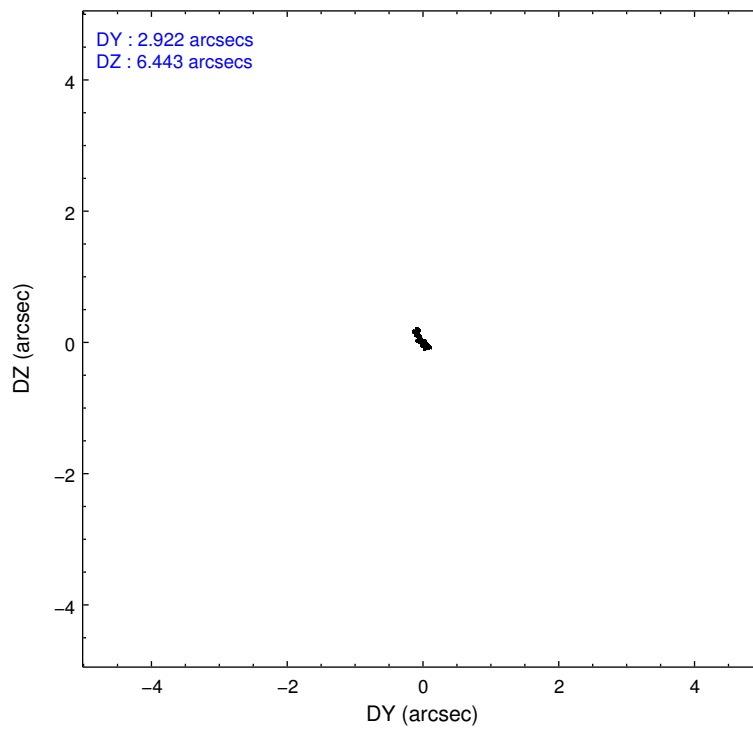
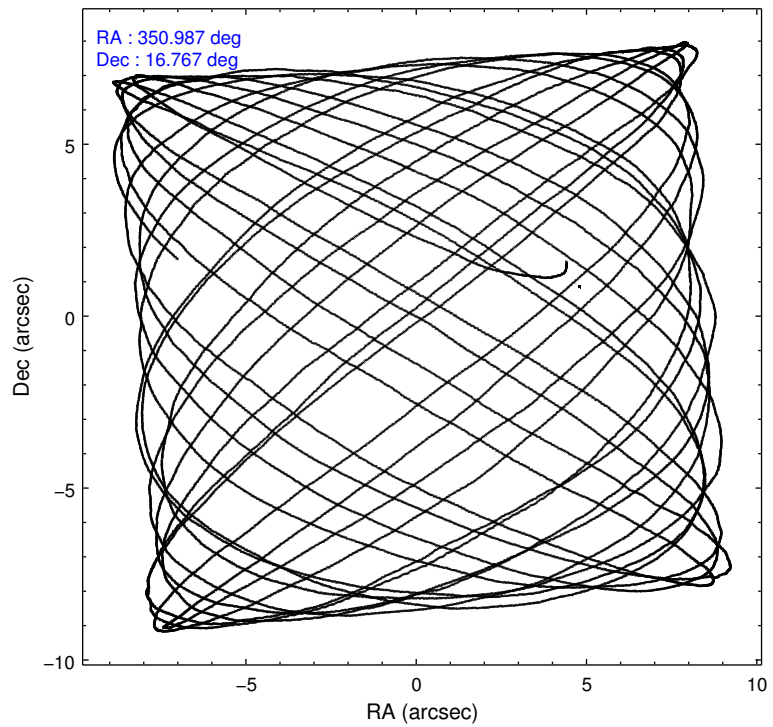
	ccd 3	ccd 5	ccd 6	ccd 7	ccd 8
level 1 events	74072	143141	84350	156505	102608
rejected events	65487	52175	66300	43064	71150
rejected %	88%	36%	78%	27%	69%

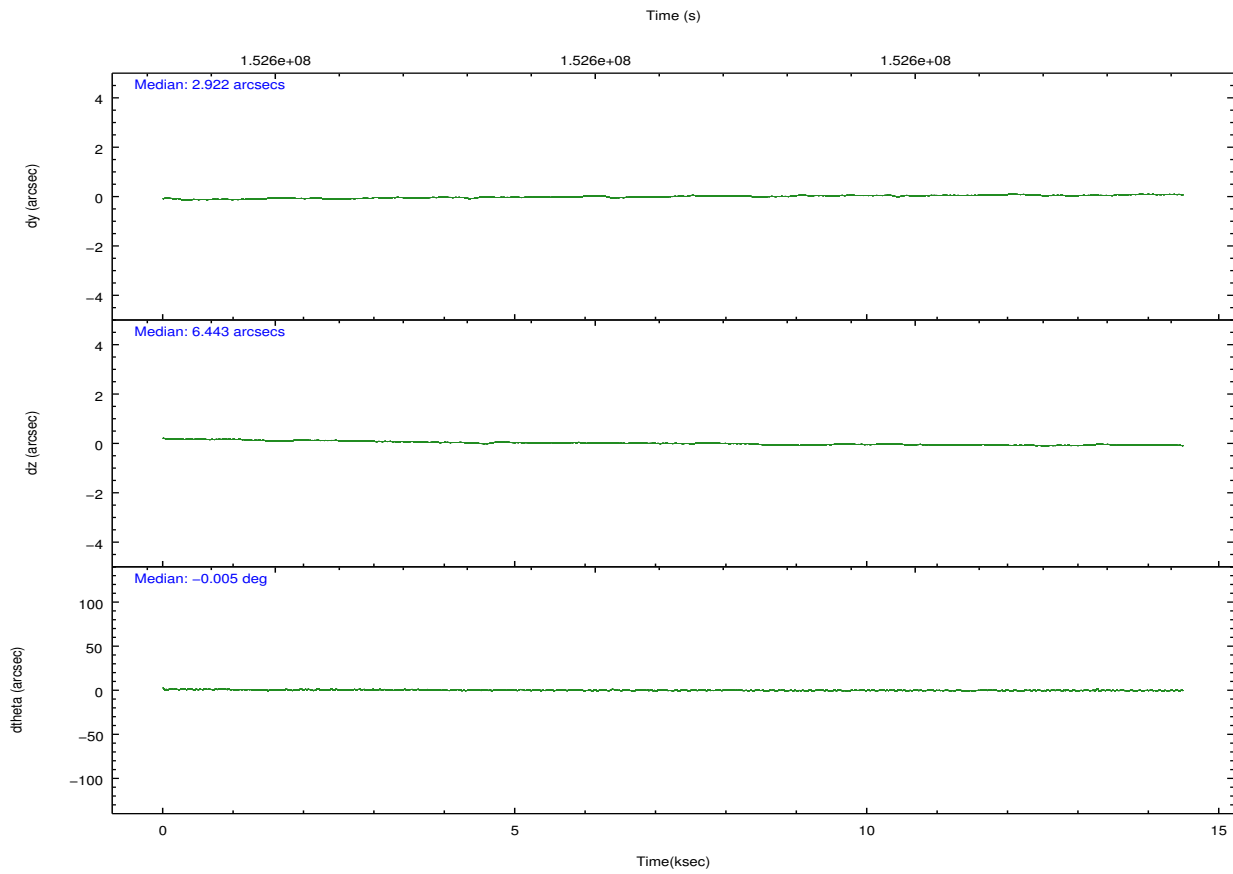
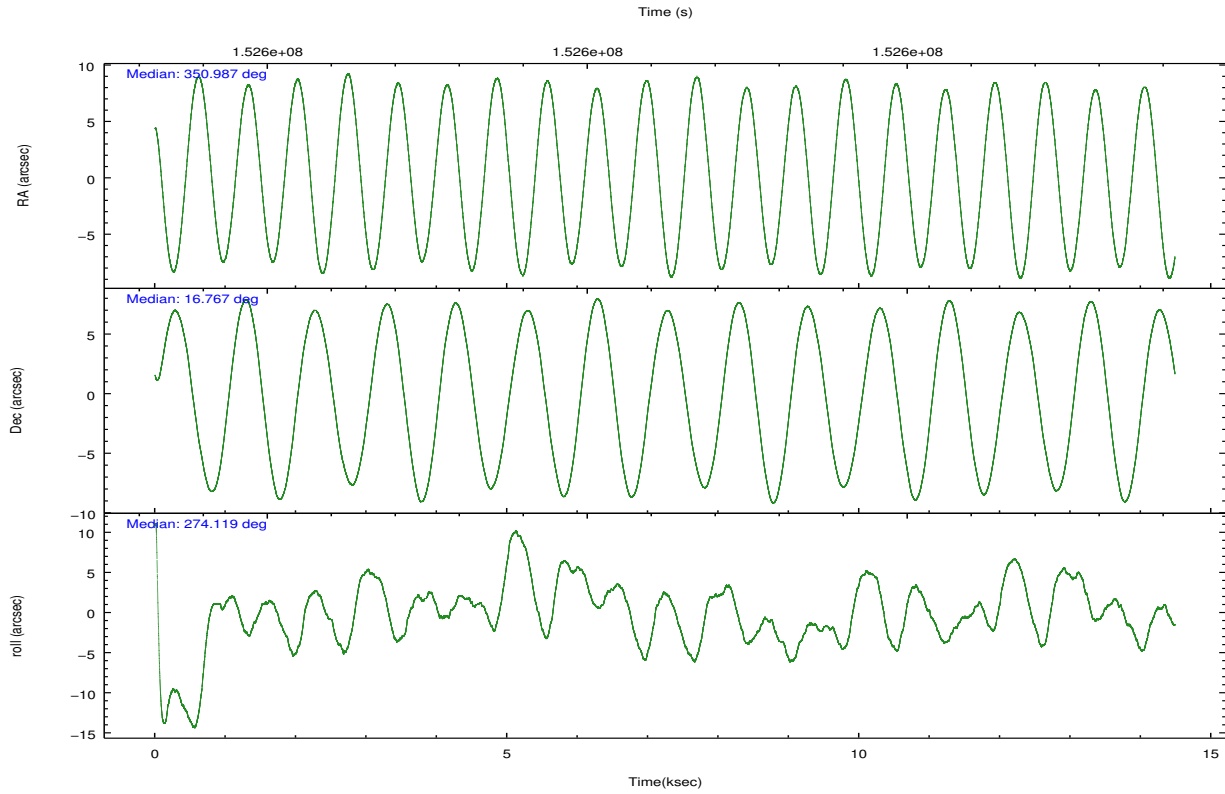
	ccd 3	ccd 5	ccd 6	ccd 7	ccd 8
grade 0 events	3934	19314	11491	21682	12207
	5%	13%	13%	13%	11%
grade 1 events	38	152	60	78	89
	0%	0%	0%	0%	0%
grade 2 events	1561	25357	2578	25433	5252
	2%	17%	3%	16%	5%
grade 3 events	837	4637	1081	11520	3815
	1%	3%	1%	7%	3%
grade 4 events	836	4630	1114	11461	3536
	1%	3%	1%	7%	3%
grade 5 events	2689	8379	2676	8713	3978
	3%	5%	3%	5%	3%
grade 6 events	1418	37045	1788	43359	6652
	1%	25%	2%	27%	6%
grade 7 events	62759	43627	63562	34259	67079
	84%	30%	75%	21%	65%

2.2 Compared Parameters

Parameter	Planned	Actual	Parameter	Planned	Actual
Instrument	ACIS	ACIS	Obspar format version number	7	7
Detector	ACIS-35678	ACIS-35678	Obspar file type	PREDICTED	ACTUAL
Grating	NONE	NONE	Obspar update status	NONE	UPDATED
Data mode	VFAINT	VFAINT	Number of optional ACIS chips dropped	0	0
Observation mode	POINTING	POINTING	On-chip summing requested	N	N
[deg] Pointing RA	350.971213	350.9874598871126	Subarray requested	NONE	NONE
[deg] Pointing Dec	16.788496	16.76620593391296	Alternating exposures requested	N	N
[deg] Pointing Roll	273.969474	274.1214386707189	[s] Primary exposure time	0.000000	3.1
[mm] SIM focus pos	-0.684267	-0.6828225247311905			
[mm] SIM defocus	0	0.001444936568705701			
[mm] SIM translation stage pos	-190.132523	-190.1425803651734			
[mm] SIM translation stage offset	0	0.01005778216563158			
[s] Observation start time (MET)	152594707.184000	152593471.95167			
Observation start date	2002-11-02T03:24:03	2002-11-02T03:04:31			
[s] Observation end time (MET)	152608459.184000	152608773.66481			
Observation end date	2002-11-02T07:13:15	2002-11-02T07:19:33			
Read mode	TIMED	TIMED			

2.3 Aspect





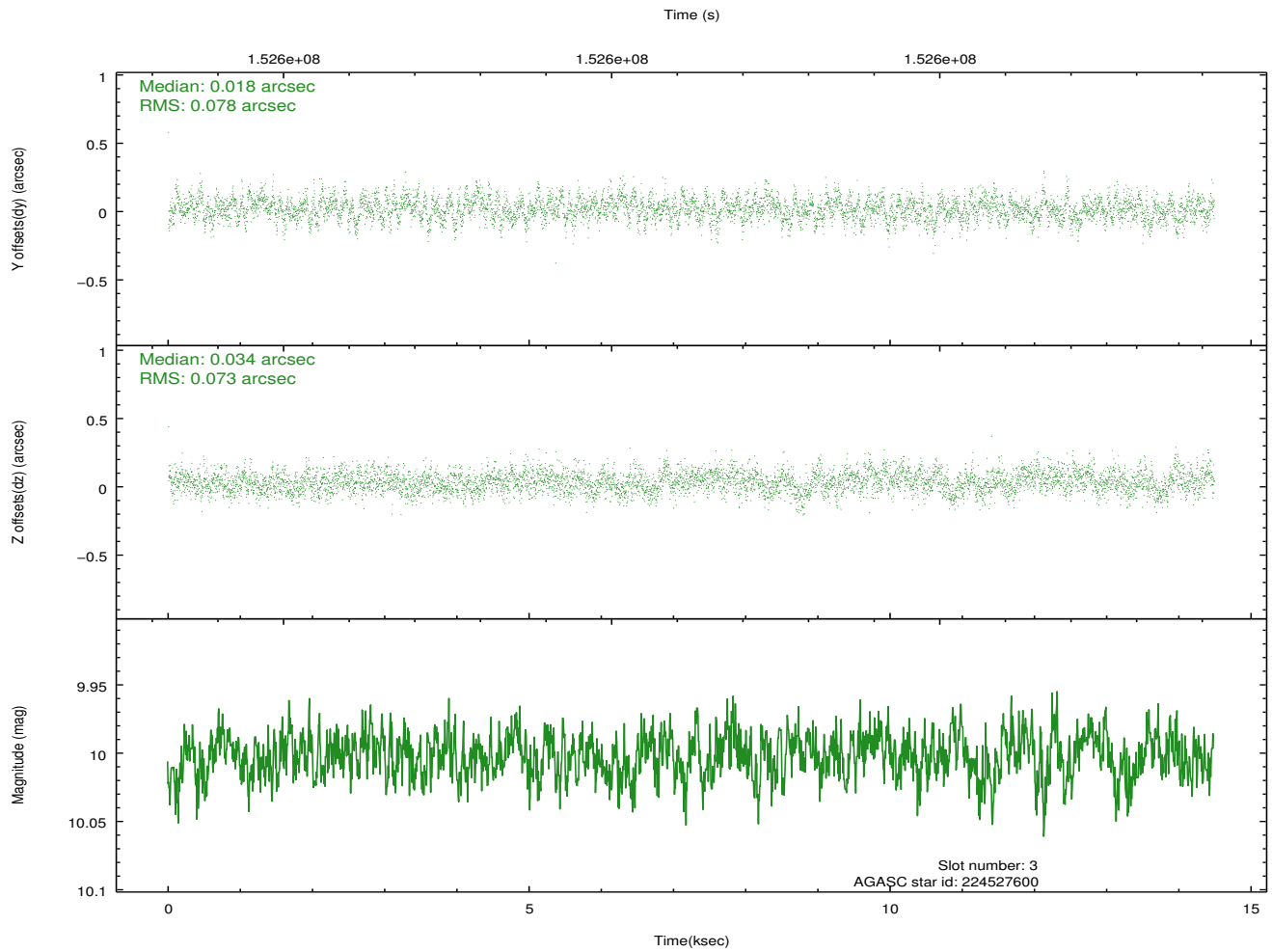
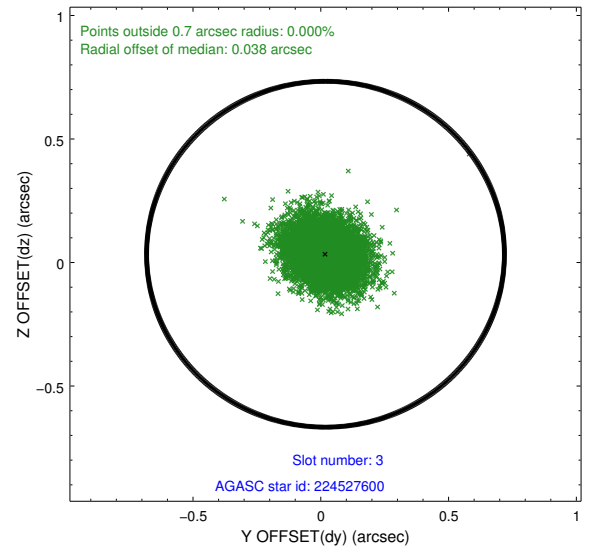
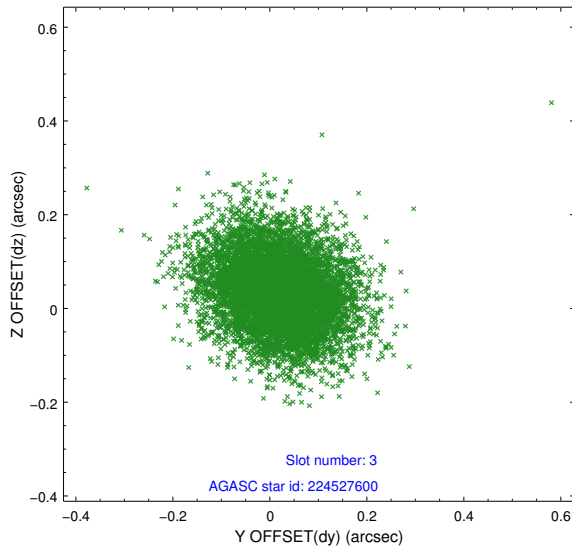
Slot Statistics

slot	status	id	mag	n_pts	med_dy	med_dz	dr1	dr2	ra	dec	mean_y	mean_z
0	FID	ACIS-S-2	7.12	3531	-0.037	0.001	0.007	0.011	0.000000	0.000000	-755.56	-1727.57
1	FID	ACIS-S-4	7.21	3532	0.003	0.017	0.007	0.012	0.000000	0.000000	2157.58	180.65
2	FID	ACIS-S-5	7.24	3533	0.002	-0.009	0.007	0.012	0.000000	0.000000	-1807.99	174.60
3	GUIDE	224527600	10.00	7060	0.018	0.034	0.114	0.184	351.354290	17.243672	-1543.36	1428.93
4	GUIDE	224528984	8.97	7066	0.067	-0.005	0.077	0.126	350.492856	16.632535	445.48	-1682.07
5	GUIDE	224529264	6.94	7066	-0.253	-0.123	0.058	0.096	350.240090	17.252650	-1844.43	-2390.50
6	GUIDE	224529752	9.41	7049	0.031	-0.017	0.095	0.155	351.100809	16.483138	1128.64	371.28
7	GUIDE	224531944	9.23	7048	0.137	0.123	0.083	0.134	350.741588	16.203421	2047.63	-936.18

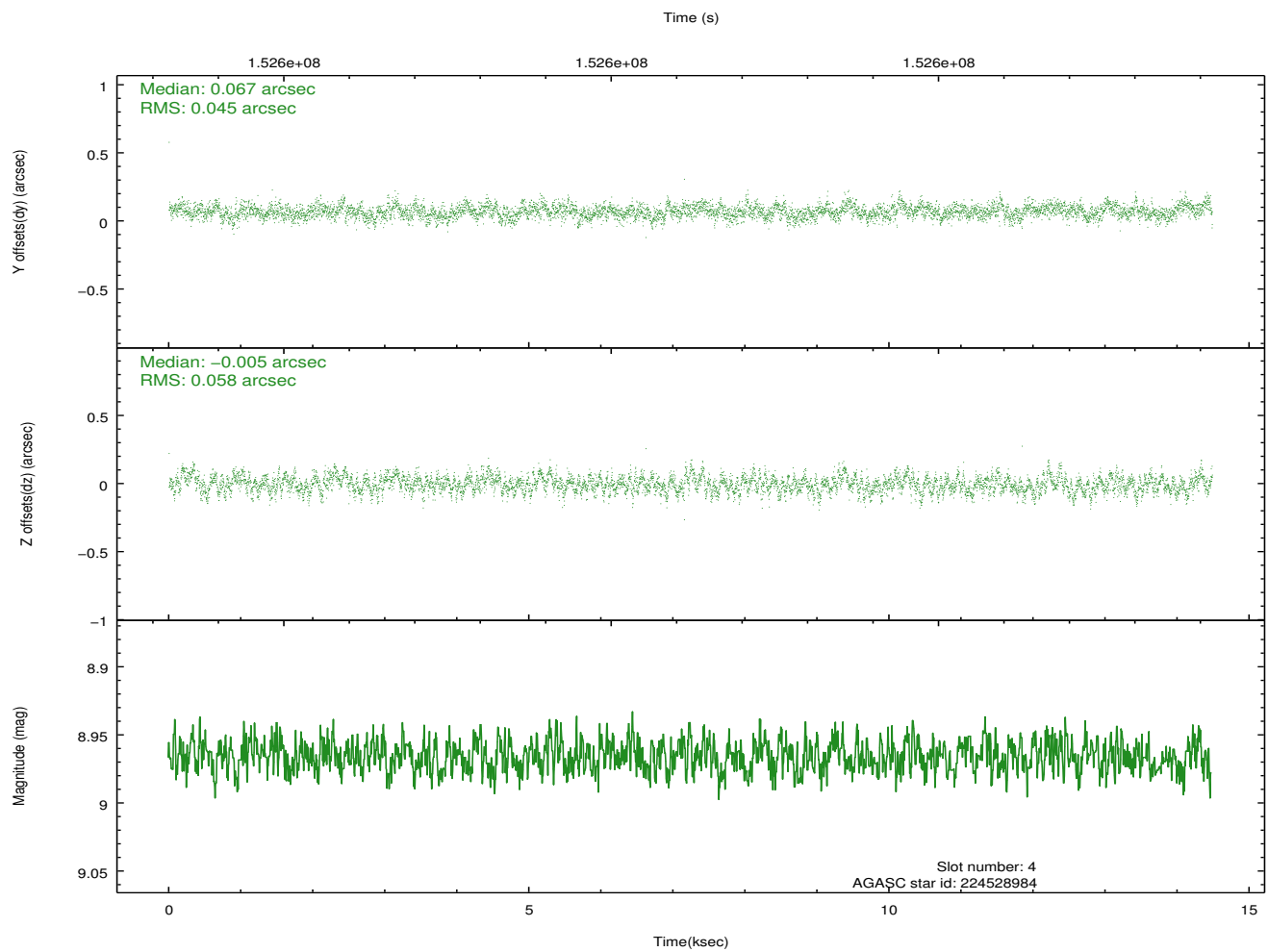
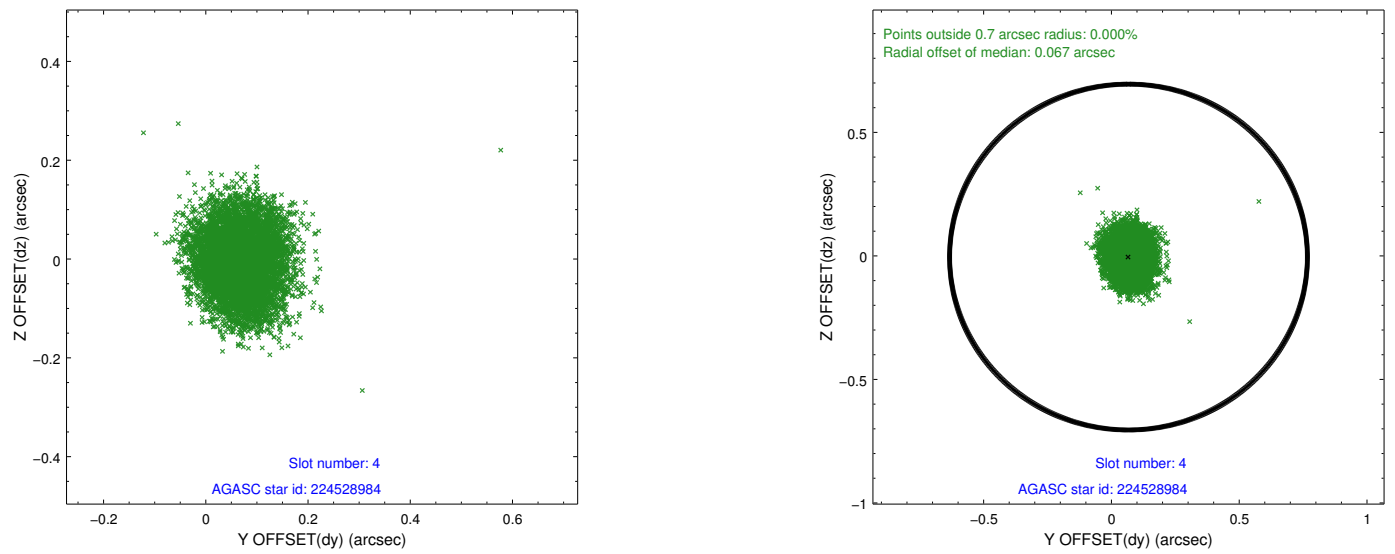
∞

2.4 Star Slots

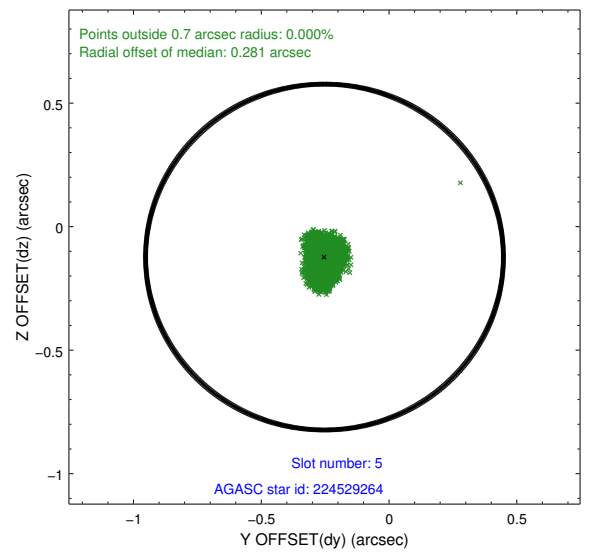
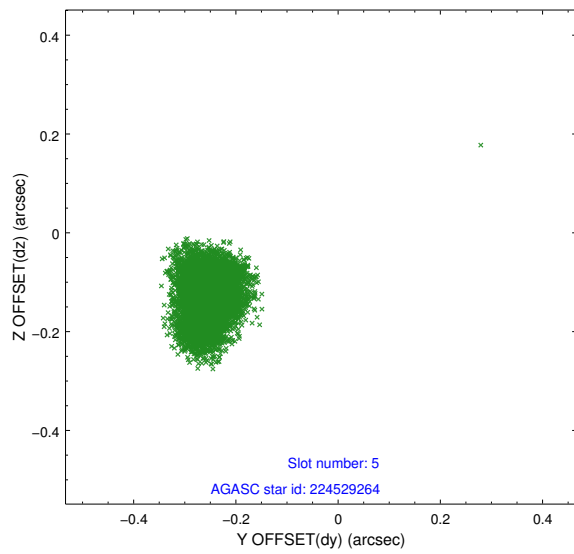
2.4.1 Slot 3



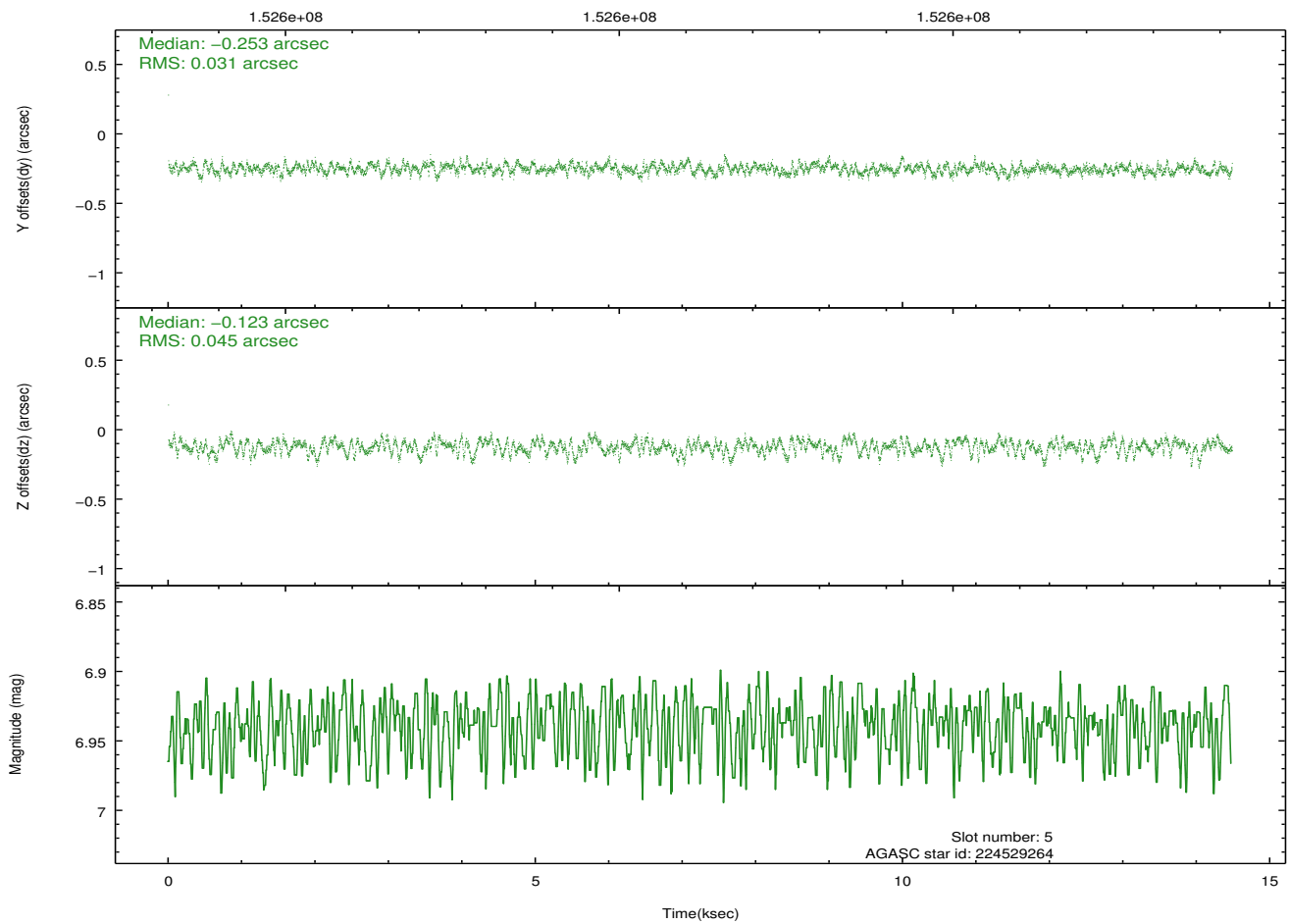
2.4.2 Slot 4



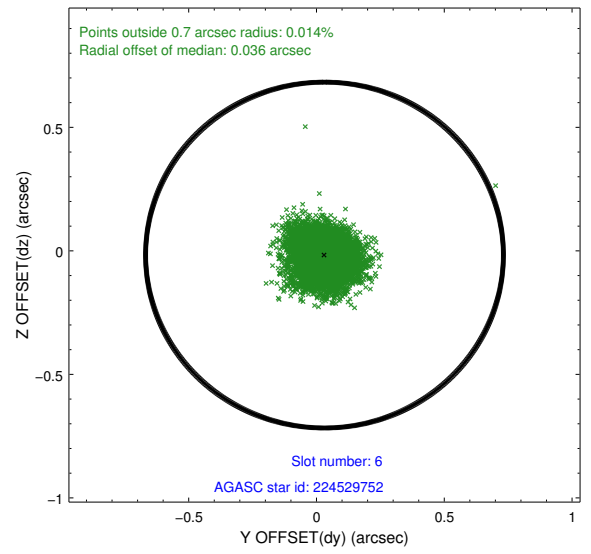
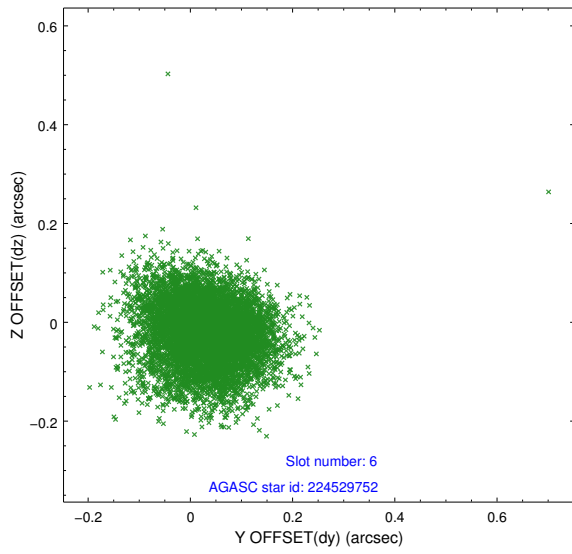
2.4.3 Slot 5



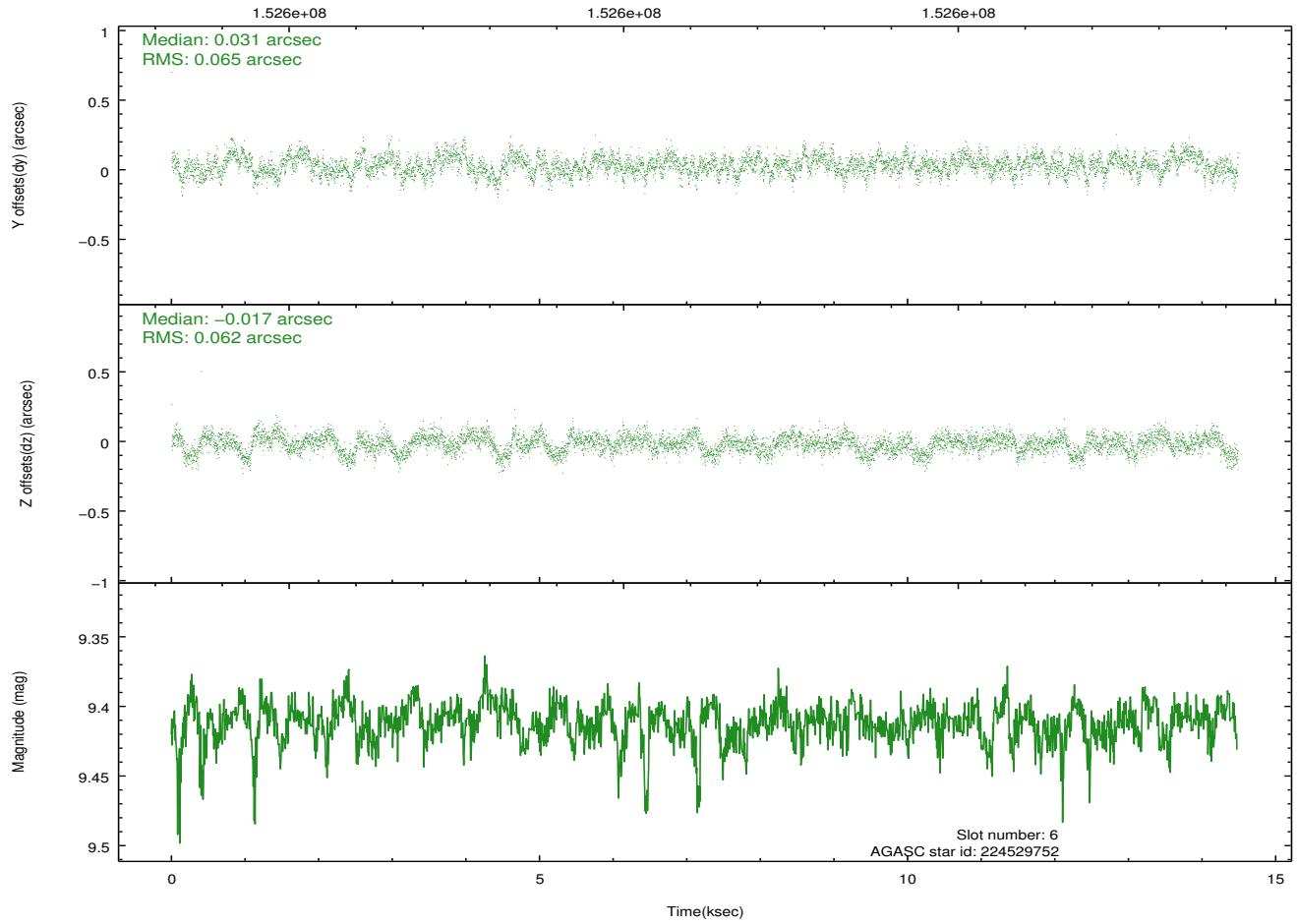
Time (s)



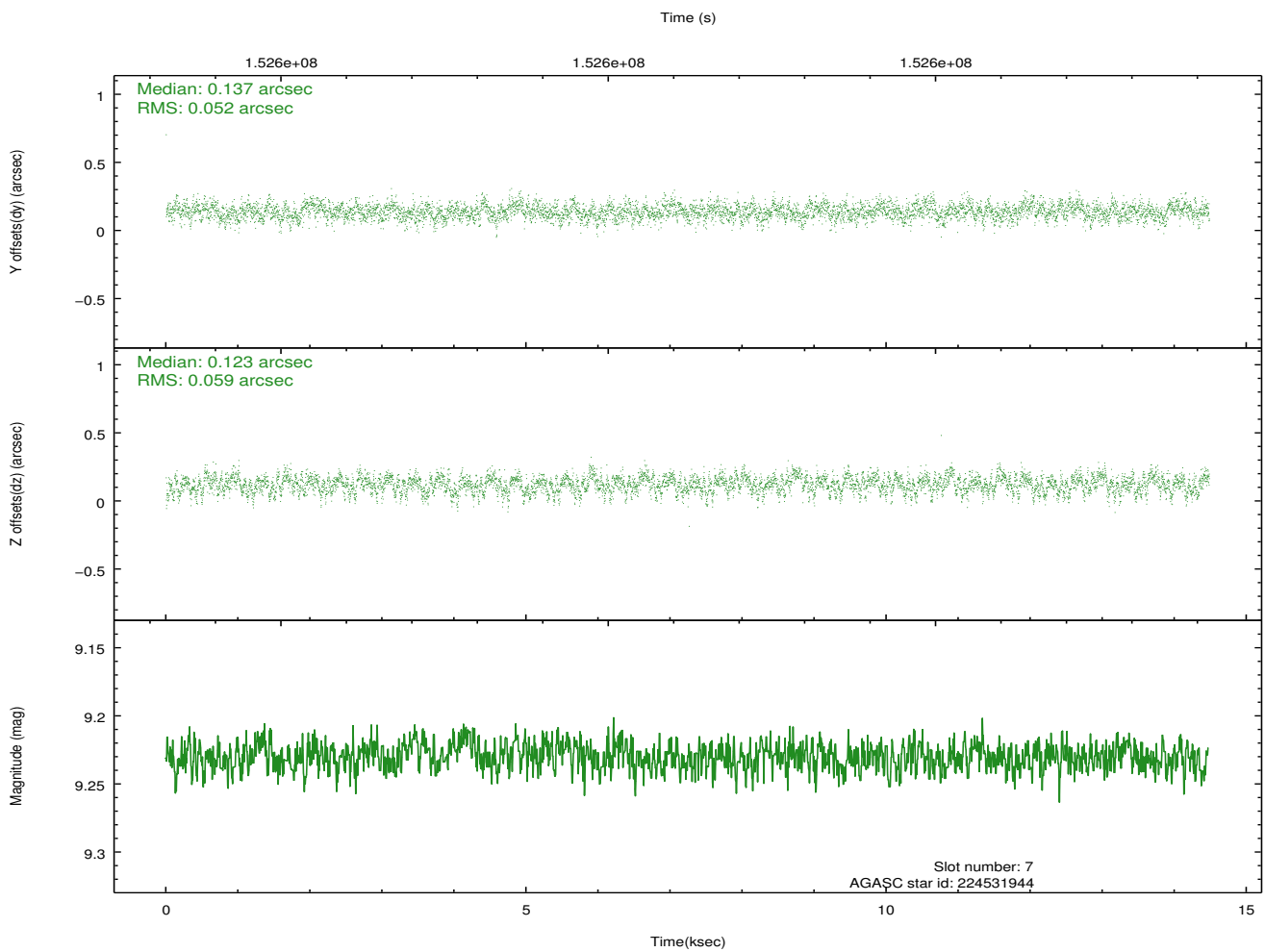
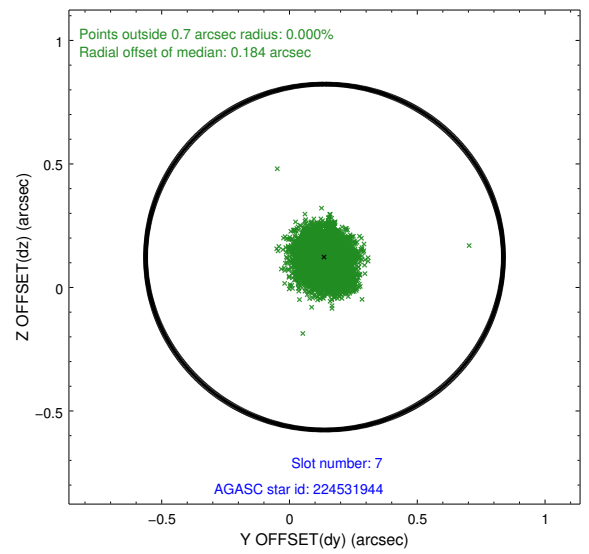
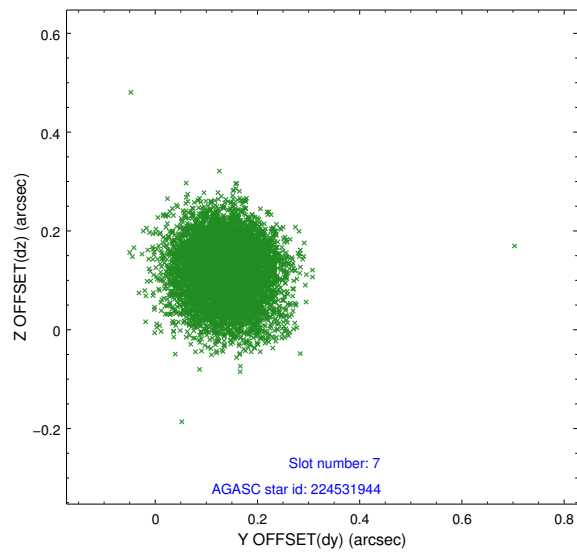
2.4.4 Slot 6



Time (s)

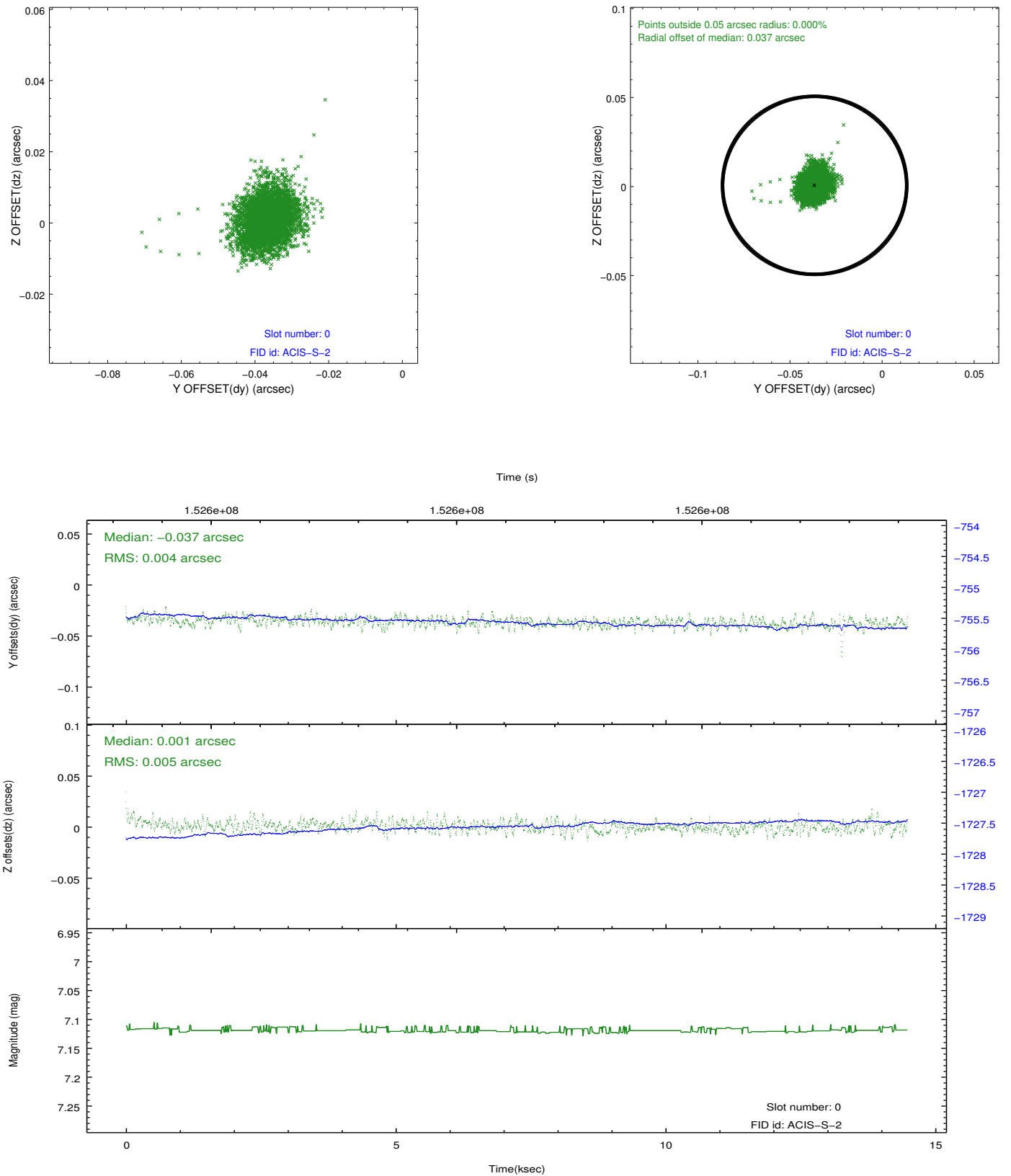


2.4.5 Slot 7

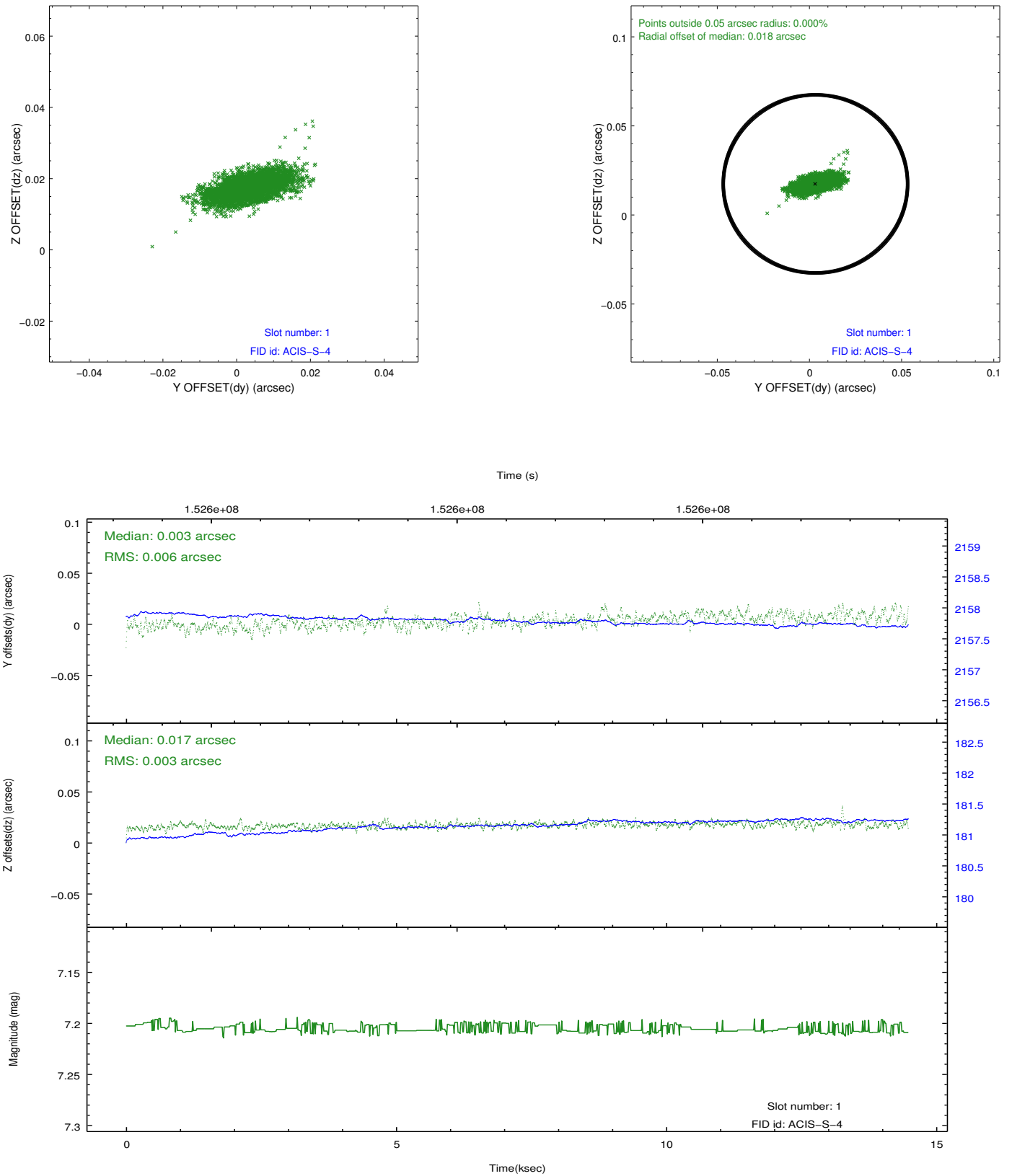


2.5 FID Slots

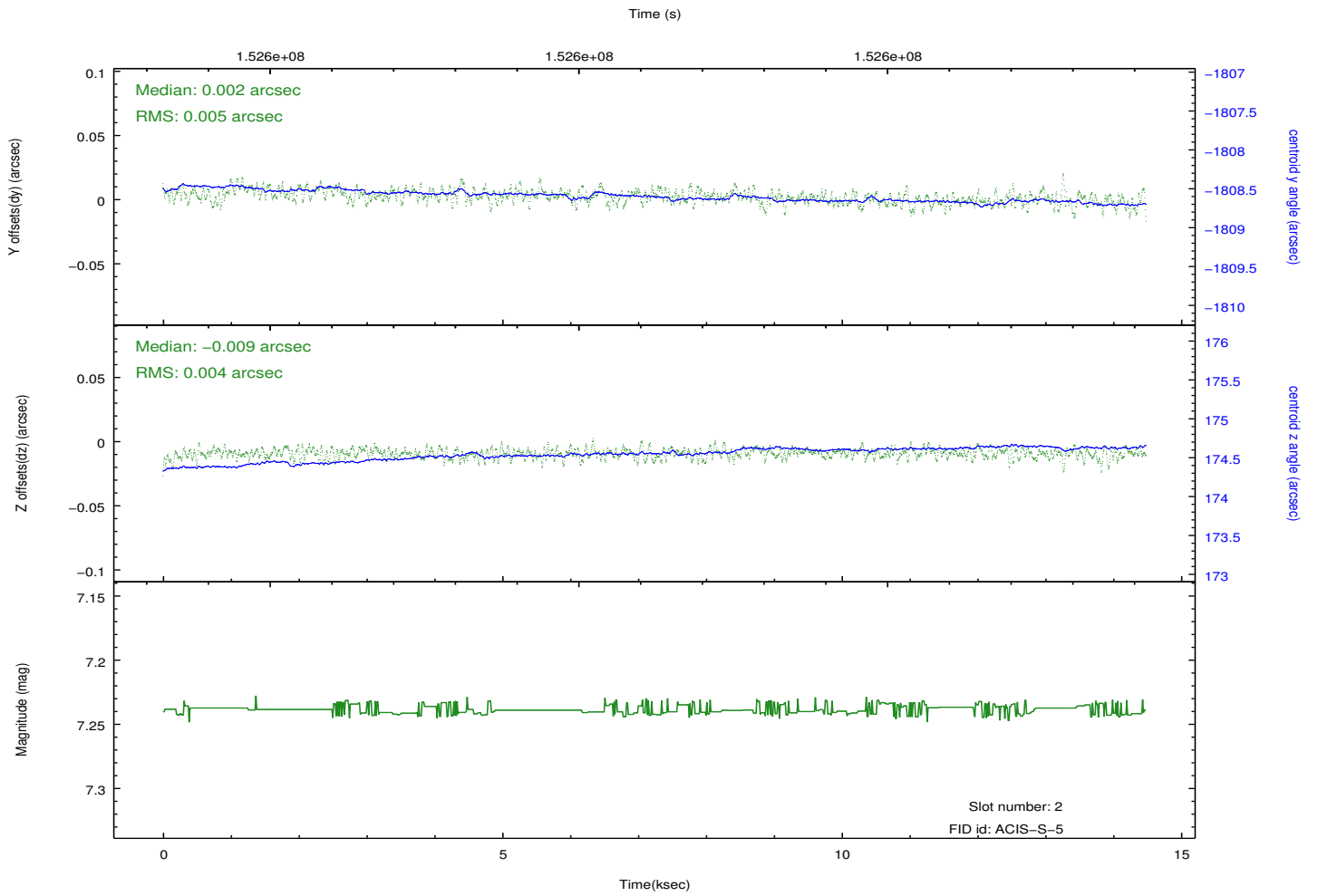
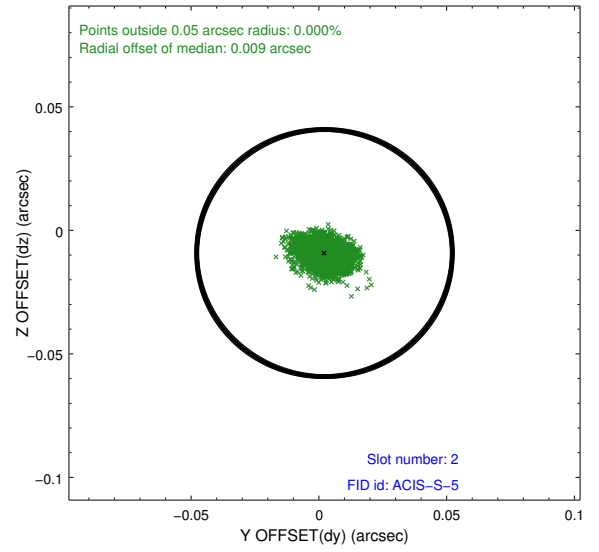
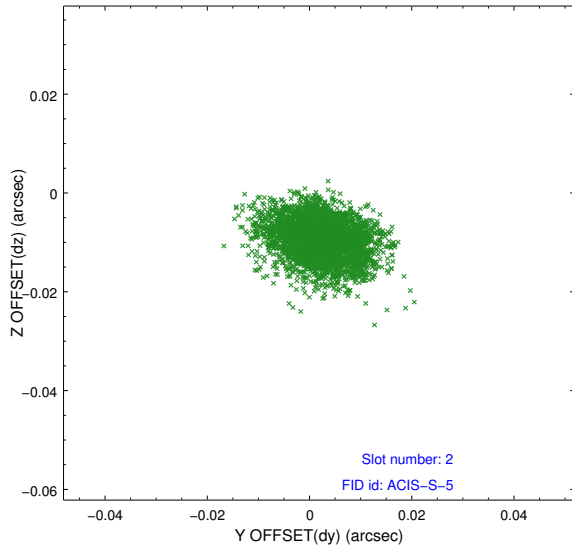
2.5.1 Slot 0



2.5.2 Slot 1



2.5.3 Slot 2



A Summary

A.1 Status

V&V Scientist	Jen Lauer
V&V Date (YYYY-MM-DD)	2012.10.25
V&V Edition	1
V&V Disposition and Status	OK
V&V Charge Time	13.86

A.2 Comments