

V&V Reference Report

L2 ASCDS Version : 8.4.5

Observation 3280 - L2 Version 3
Chandra X-Ray Center

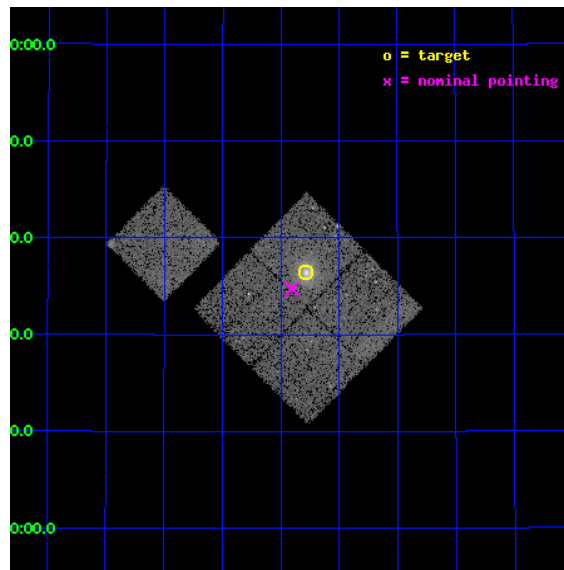
L2 Processing Date : Nov 13 2012

Contents

1	Front	2
2	OBI	3
2.1	OBI	3
2.1.1	Images	3
2.1.2	Bias	3
2.1.3	Parameters	4
2.1.4	Events	4
2.2	Compared Parameters	5
2.3	Aspect	6
2.4	Star Slots	9
2.4.1	Slot 3	9
2.4.2	Slot 4	10
2.4.3	Slot 5	11
2.4.4	Slot 6	12
2.4.5	Slot 7	13
2.5	FID Slots	14
2.5.1	Slot 0	14
2.5.2	Slot 1	15
2.5.3	Slot 2	16
A	Summary	17
A.1	Status	17
A.2	Comments	17

1 Front

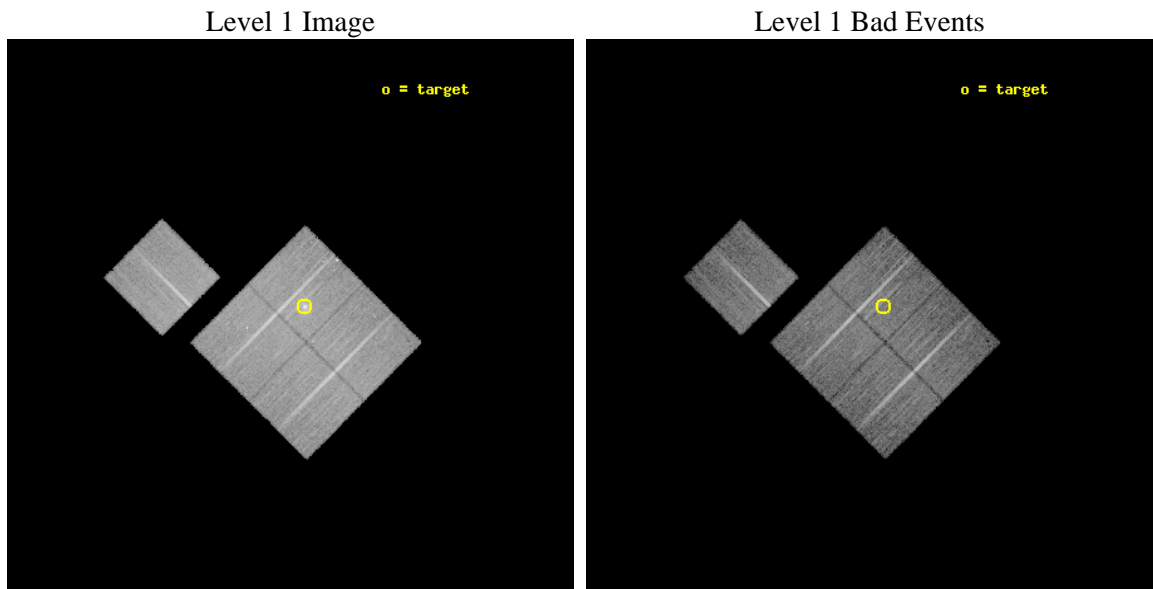
seq_num	800280	Sequence number
obs_id	3280	Observation id
title	MACS: THE X-RAY PROPERTIES OF THE MOST MASSIVE GALAXY CLUSTERS AT Z>0.3	Proposal title
observer	Dr. Harald Ebeling	Principal investigator
object	MACSJ1720.2+3536	Source name
dtcycle	0	
cycle	P	events from which exps? Prim/Second/Both
ra_targ	260.070417	Observer's specified target RA [deg]
dec_targ	35.606944	Observer's specified target Dec [deg]
ra_nom	260.10131679919	Nominal RA [deg]
dec_nom	35.578893021661	Nominal Dec [deg]
roll_nom	314.79631566587	Nominal Roll [deg]
revision	3	Processing version of data
ontime	21117.199959368	Sum of GTIs [s]
livetime	20841.288195642	Livetime [s]
ontime0	21107.777018845	Sum of GTIs [s]
ontime1	21107.776959002	Sum of GTIs [s]
ontime2	21114.058979213	Sum of GTIs [s]
ontime3	21117.199959368	Sum of GTIs [s]
ontime6	21117.199959368	Sum of GTIs [s]
l2events	56898	Number of level 2 events



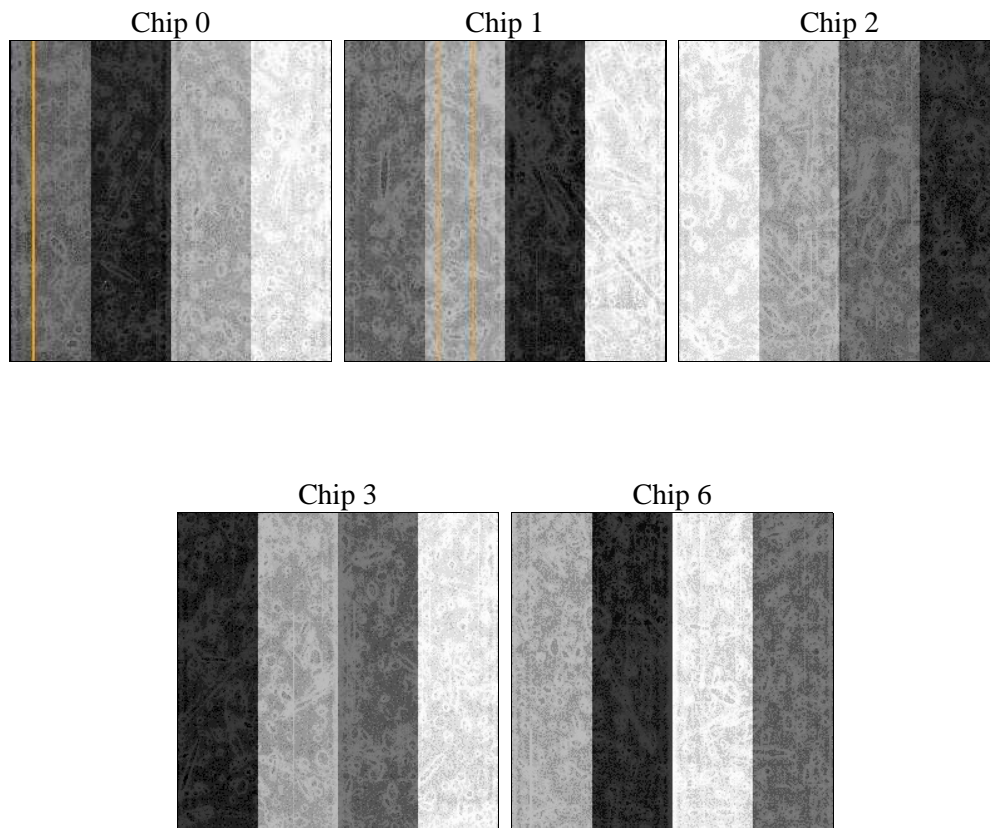
2 OBI

2.1 OBI

2.1.1 Images



2.1.2 Bias



2.1.3 Parameters

obi_num	1	Obi number	sched_exp_time	21000.000000	[s] Scheduled observation exposure time
ascdsver	8.4.5	Processing system revision	ontime	21117.199959368	Sum of GTIs [s]
caldbver	4.5.2	 	ontime0	21107.777018845	Sum of GTIs [s]
date	2012-11-08T23:48:23	Date and time of file creation	ontime1	21107.776959002	Sum of GTIs [s]
revision	3	Processing version of data	ontime2	21114.058979213	Sum of GTIs [s]
			ontime3	21117.199959368	Sum of GTIs [s]
			ontime6	21117.199959368	Sum of GTIs [s]
			l1events	553339	Number of level 1 events

2.1.4 Events

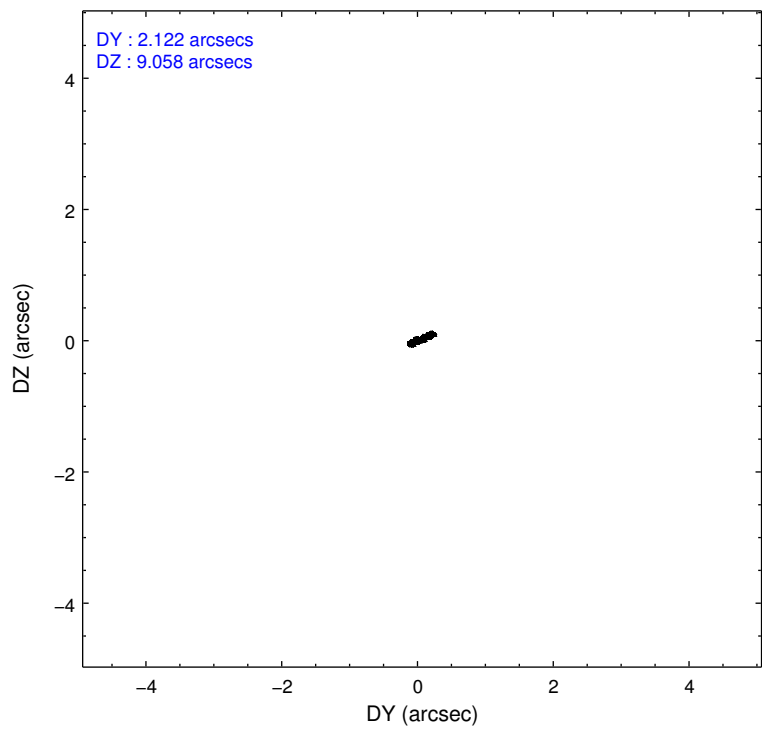
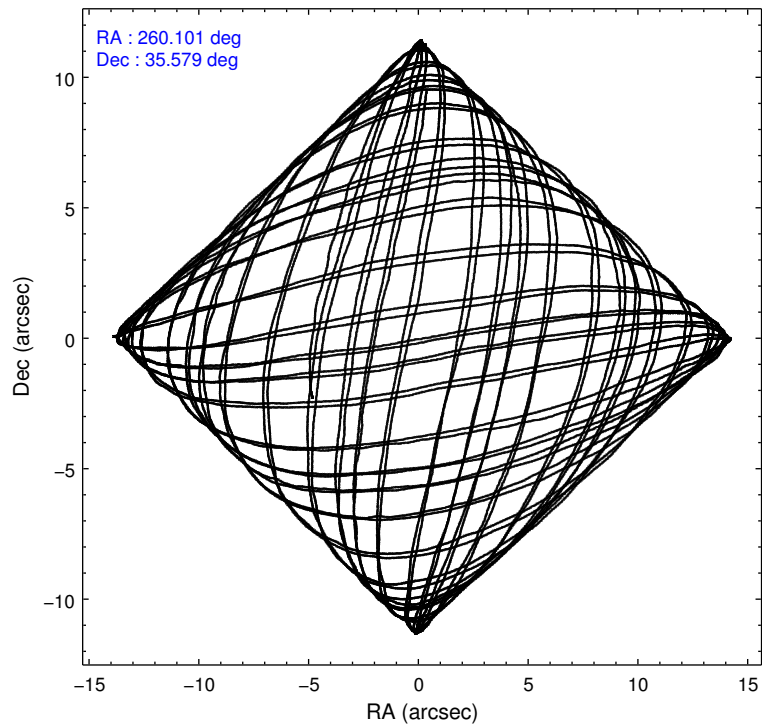
	ccd 0	ccd 1	ccd 2	ccd 3	ccd 6
level 1 events	104987	103092	115925	120786	108549
rejected events	93523	90200	104445	101092	96817
rejected %	89%	87%	90%	83%	89%

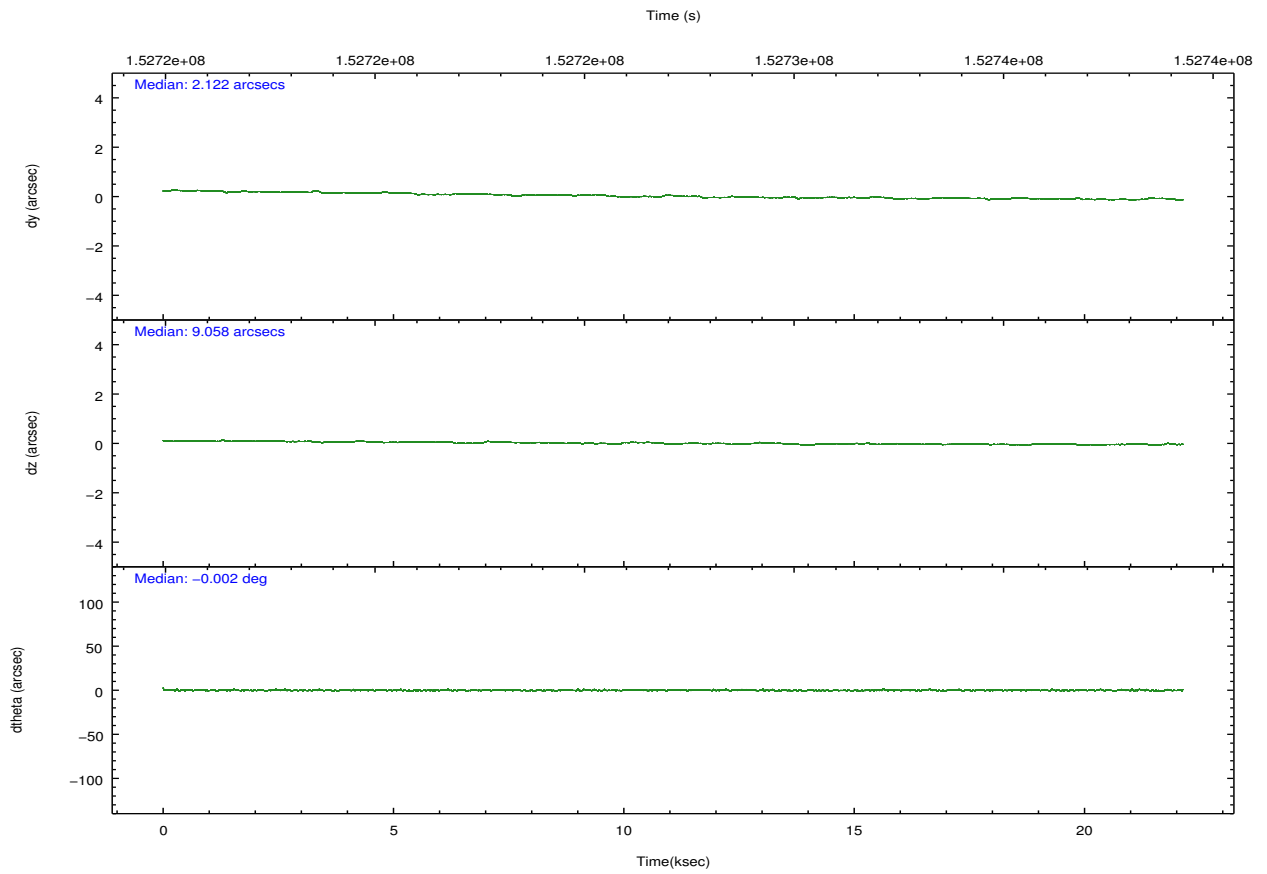
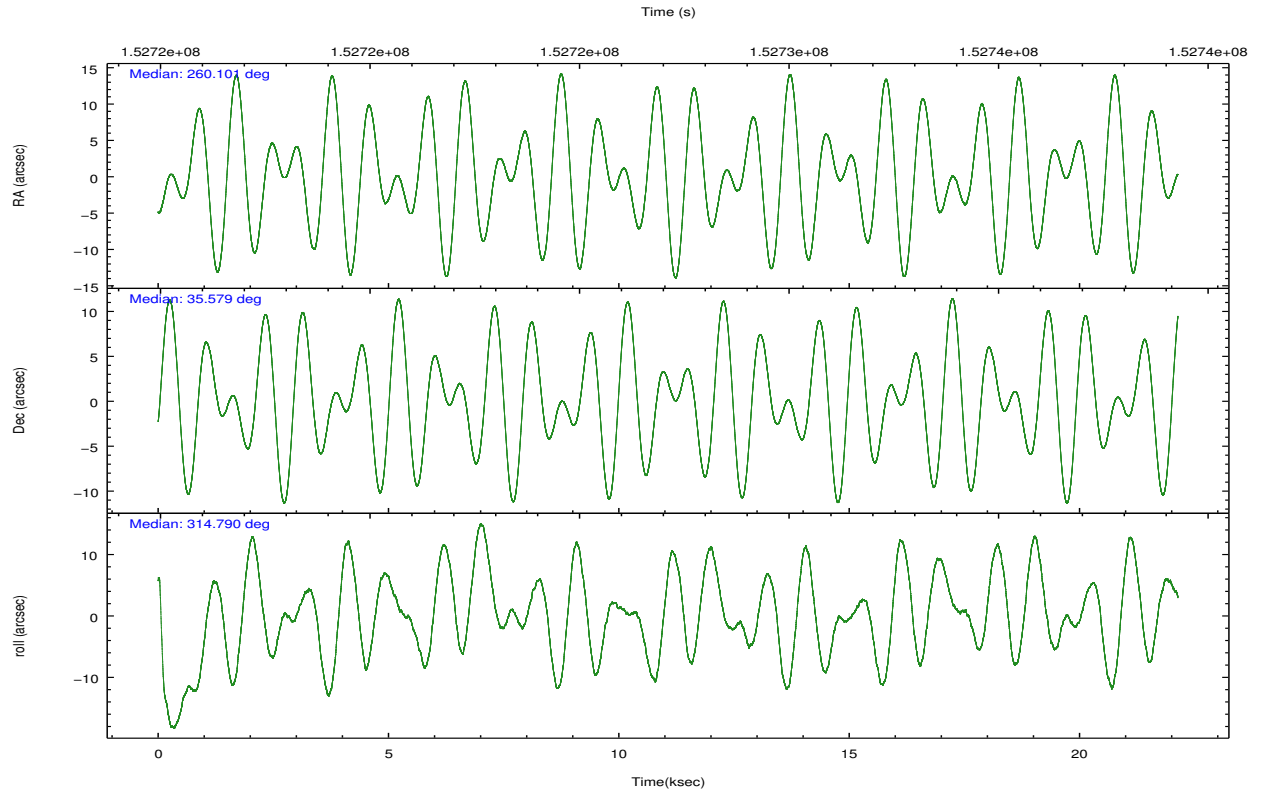
	ccd 0	ccd 1	ccd 2	ccd 3	ccd 6
grade 0 events	4170	4960	4516	11524	4290
	3%	4%	3%	9%	3%
grade 1 events	54	56	64	90	50
	0%	0%	0%	0%	0%
grade 2 events	2568	2681	2514	3023	2411
	2%	2%	2%	2%	2%
grade 3 events	1325	1446	1209	1451	1279
	1%	1%	1%	1%	1%
grade 4 events	1247	1363	1270	1480	1391
	1%	1%	1%	1%	1%
grade 5 events	3689	3887	3440	4214	4157
	3%	3%	2%	3%	3%
grade 6 events	2156	2448	1975	2219	2367
	2%	2%	1%	1%	2%
grade 7 events	89778	86251	100937	96785	92604
	85%	83%	87%	80%	85%

2.2 Compared Parameters

Parameter	Planned	Actual	Parameter	Planned	Actual
Instrument	ACIS	ACIS	Obspar format version number	7	7
Detector	ACIS-01236	ACIS-01236	Obspar file type	PREDICTED	ACTUAL
Grating	NONE	NONE	Obspar update status	NONE	UPDATED
Data mode	VFAINT	VFAINT	Number of optional ACIS chips dropped	0	0
Observation mode	POINTING	POINTING	On-chip summing requested	N	N
[deg] Pointing RA	260.068789	260.1013167991851	Subarray requested	NONE	NONE
[deg] Pointing Dec	35.585978	35.5788930216608	Alternating exposures requested	N	N
[deg] Pointing Roll	314.606554	314.796315665868	[s] Primary exposure time	0.000000	3.1
[mm] SIM focus pos	-0.782348	-0.7809083437167272			
[mm] SIM defocus	0	0.001439871863259334			
[mm] SIM translation stage pos	-227.742463	-227.734108438797			
[mm] SIM translation stage offset	-5.85	-5.858344564132665			
[s] Observation start time (MET)	152717184.184000	152715746.76926			
Observation start date	2002-11-03T13:25:20	2002-11-03T13:02:26			
[s] Observation end time (MET)	152738184.184000	152738567.8827			
Observation end date	2002-11-03T19:15:20	2002-11-03T19:22:47			
Read mode	TIMED	TIMED			

2.3 Aspect





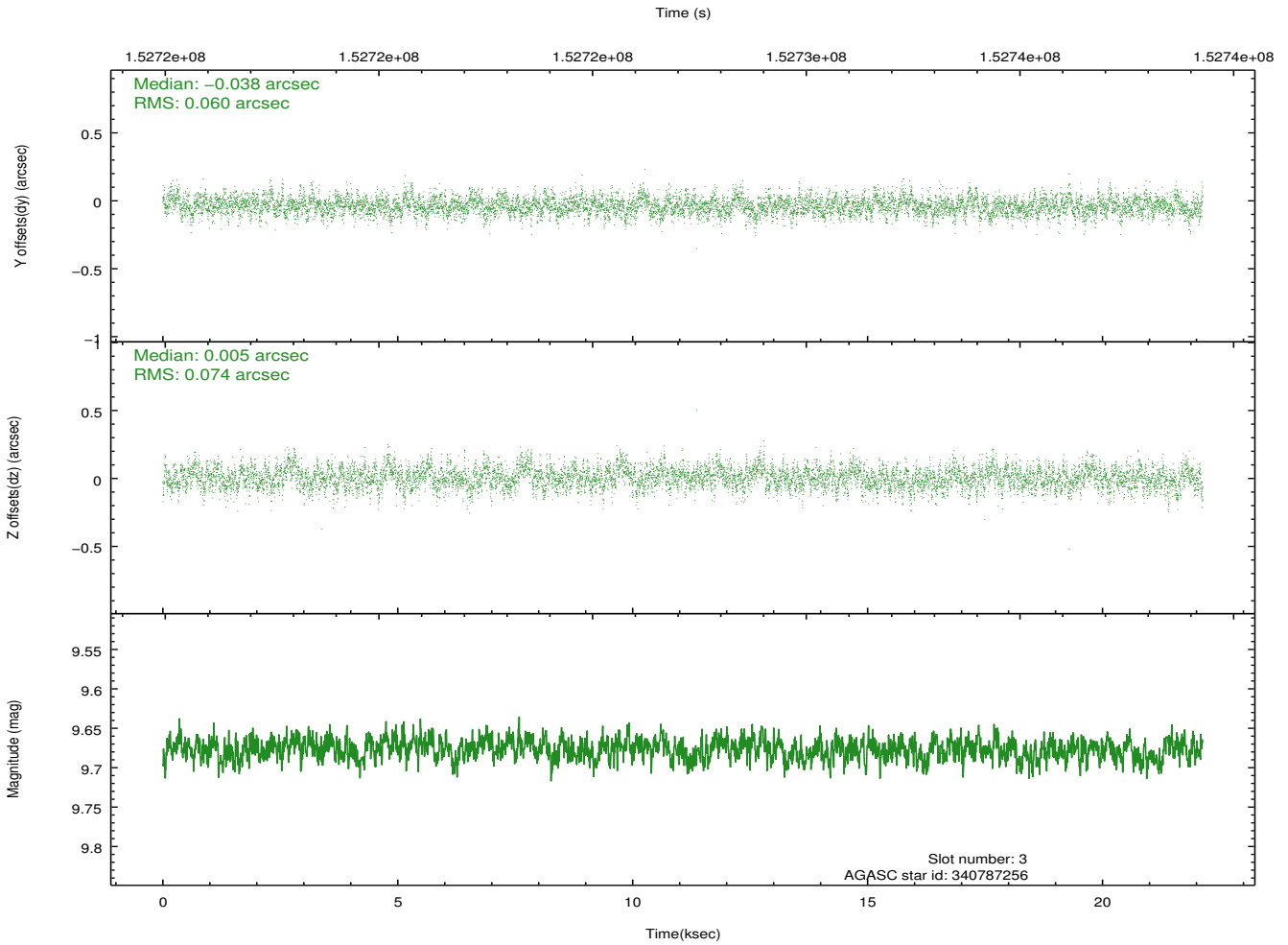
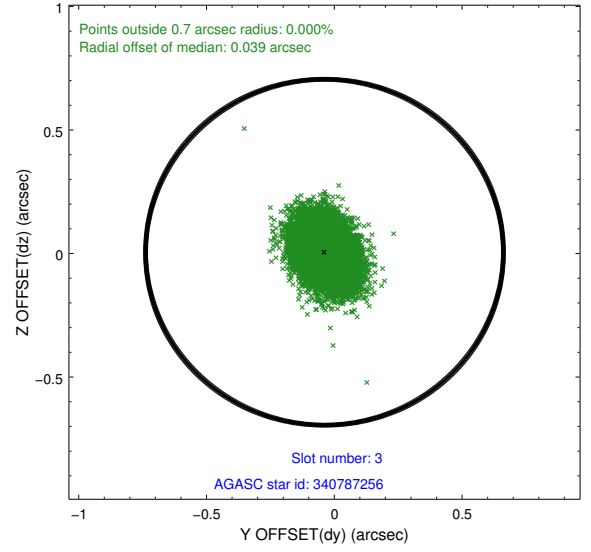
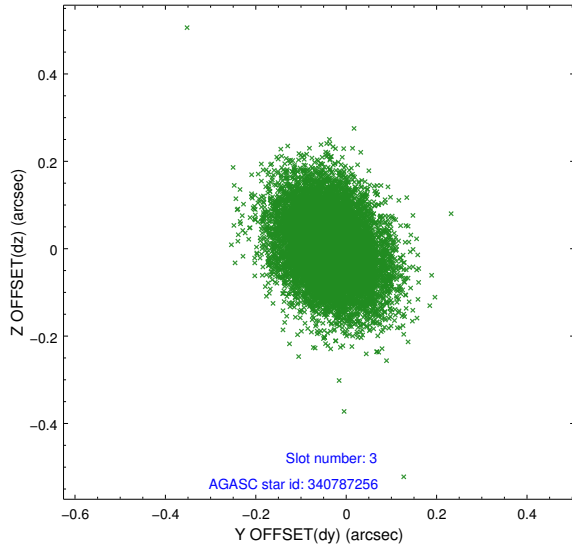
Slot Statistics

slot	status	id	mag	n_pts	med_dy	med_dz	dr1	dr2	ra	dec	mean_y	mean_z
0	FID	ACIS-I-1	7.24	5399	0.029	-0.010	0.007	0.012	0.000000	0.000000	937.58	-952.77
1	FID	ACIS-I-5	7.23	5399	-0.127	0.057	0.006	0.011	0.000000	0.000000	-1810.59	944.70
2	FID	ACIS-I-6	7.25	5398	0.006	0.024	0.007	0.012	0.000000	0.000000	402.95	1589.34
3	GUIDE	340787256	9.68	10794	-0.038	0.005	0.100	0.166	259.719230	35.158590	372.82	-1811.35
4	GUIDE	340793200	9.39	10791	0.115	0.012	0.081	0.135	260.300981	35.203623	1460.45	-479.55
5	GUIDE	341318216	9.77	10793	-0.051	0.052	0.108	0.174	259.692720	35.669893	-987.39	-569.39
6	GUIDE	341325224	8.87	10794	-0.021	0.042	0.074	0.118	260.448683	35.800602	228.45	1333.95
7	GUIDE	341325128	8.48	10796	-0.002	-0.111	0.062	0.099	260.031346	35.684277	-327.56	170.80

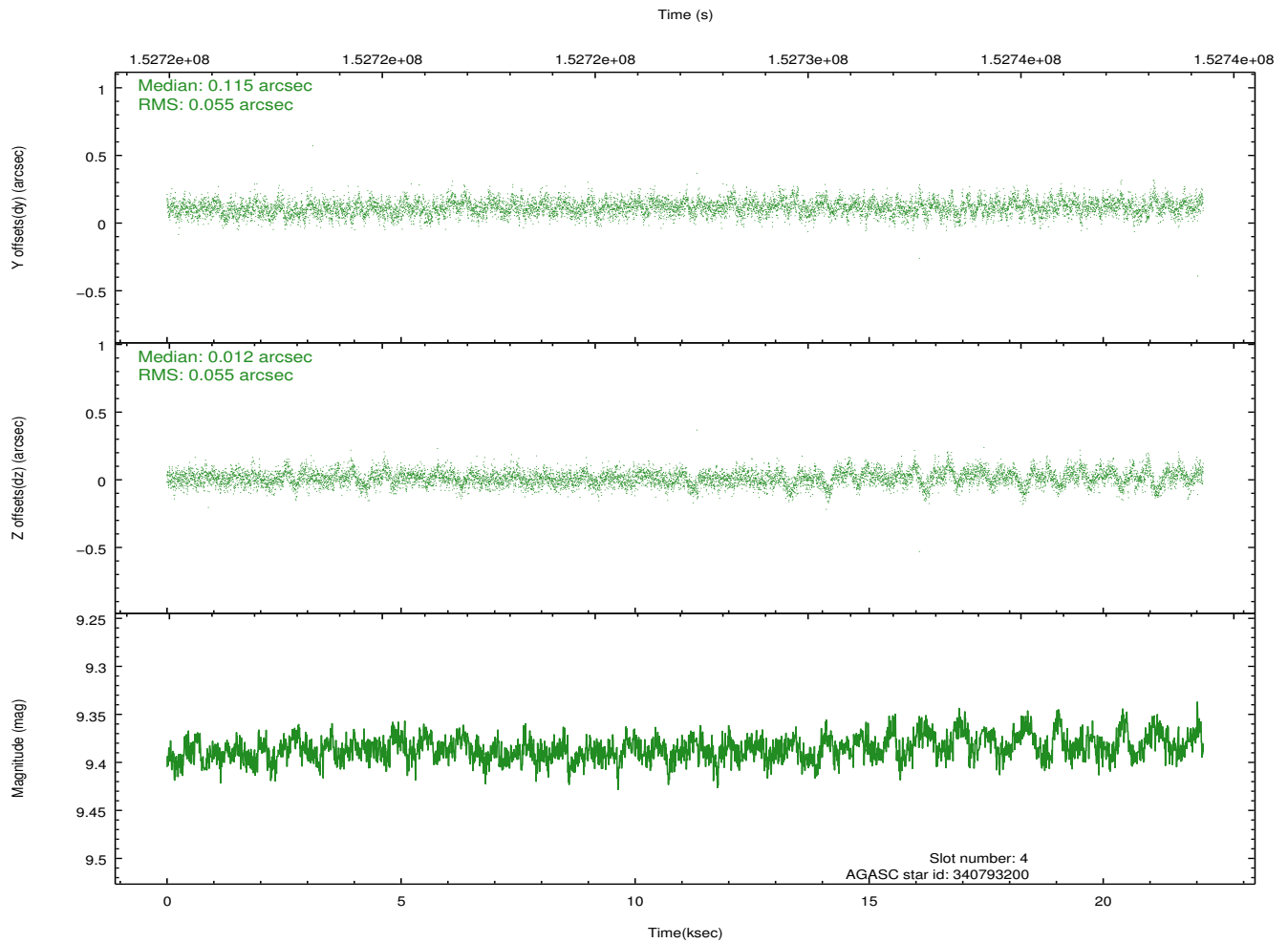
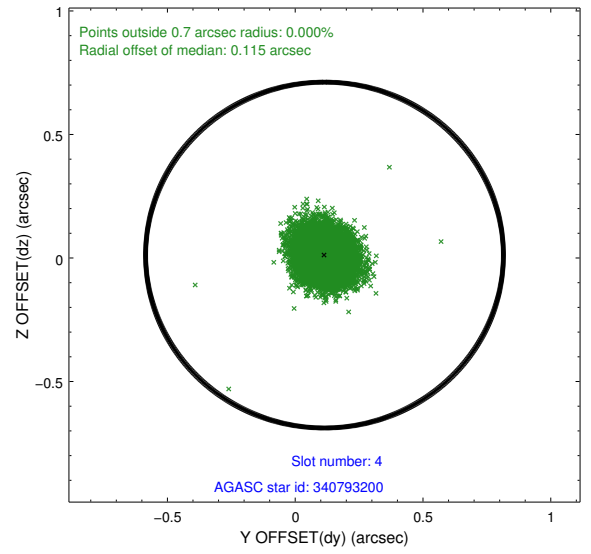
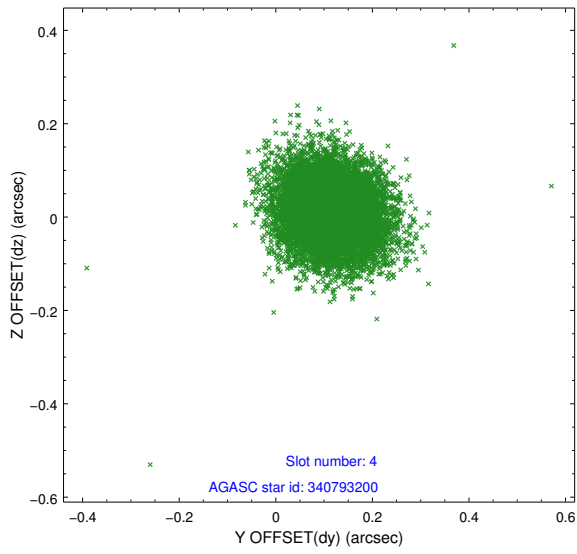
∞

2.4 Star Slots

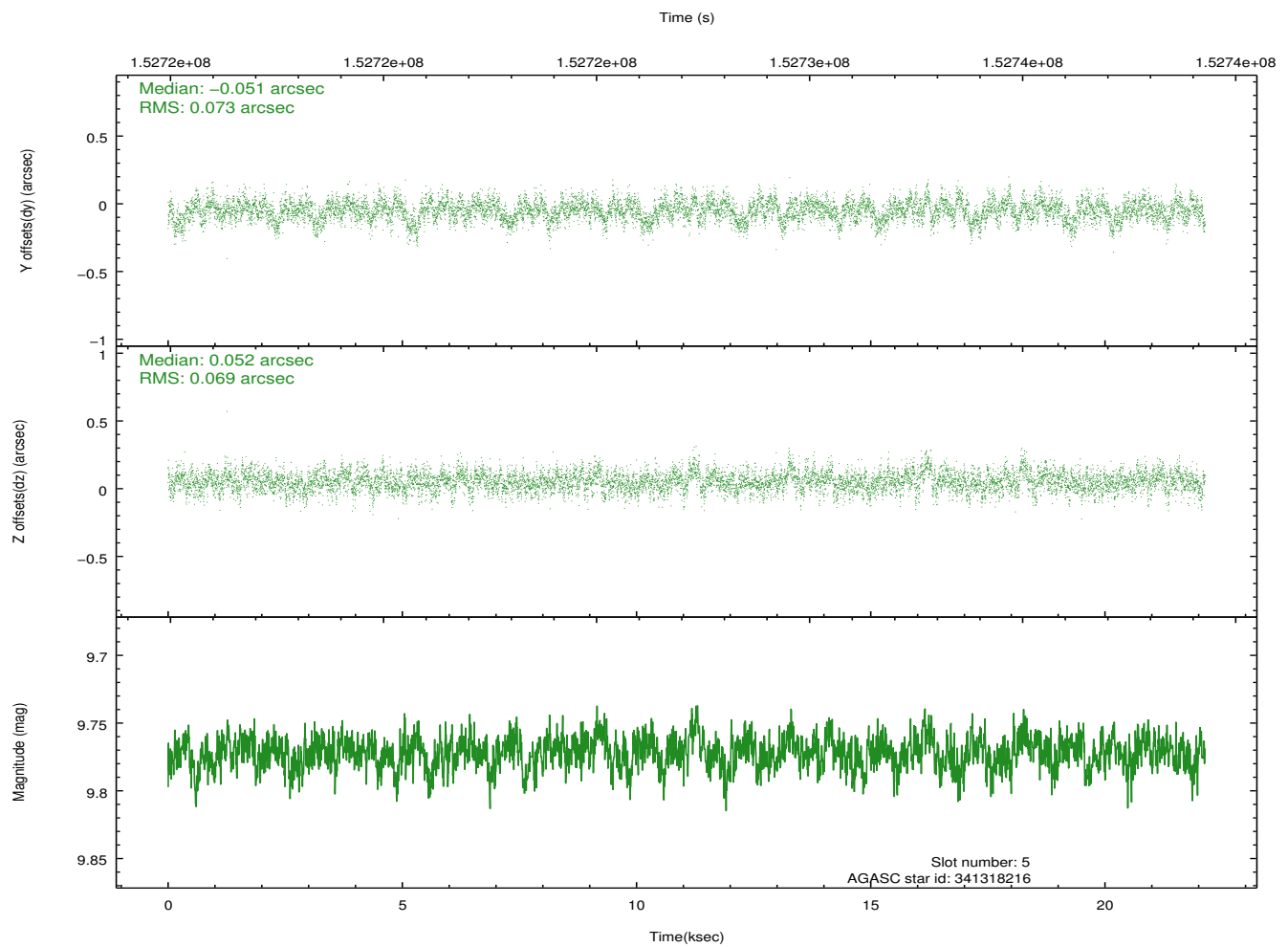
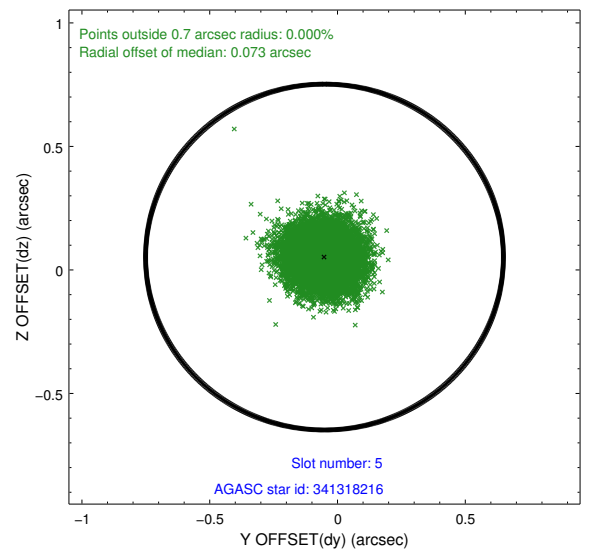
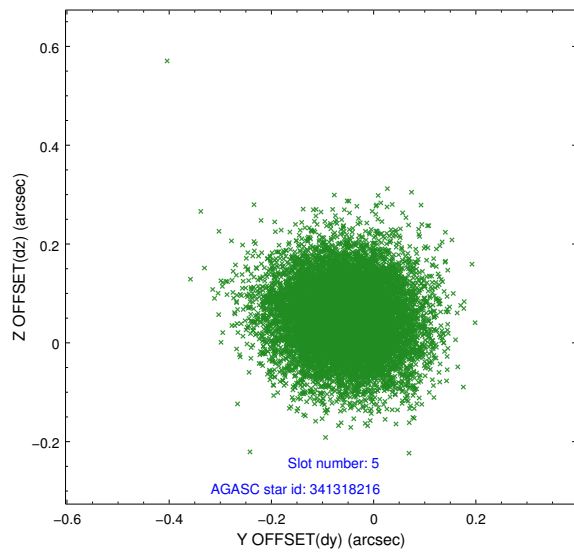
2.4.1 Slot 3



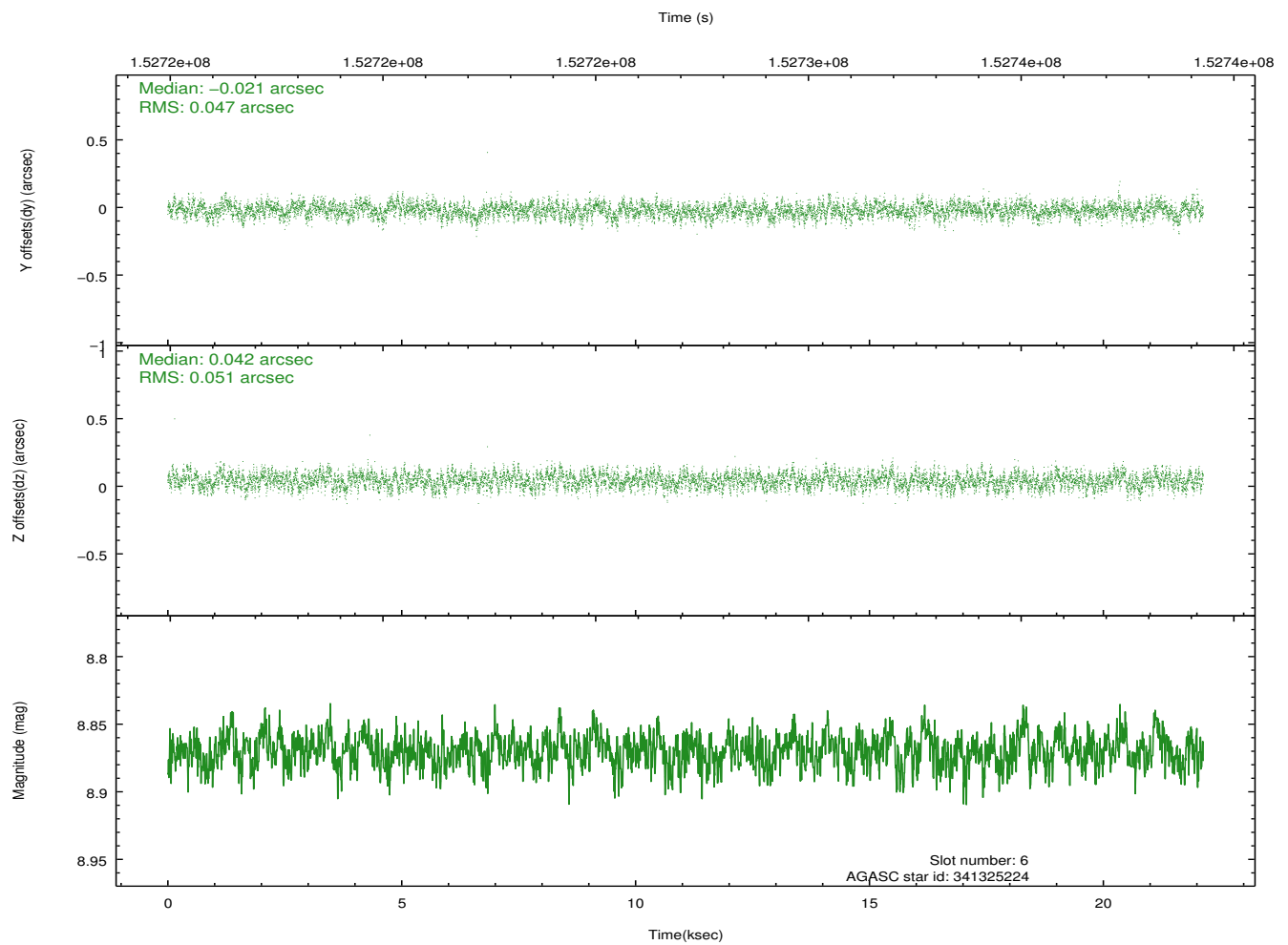
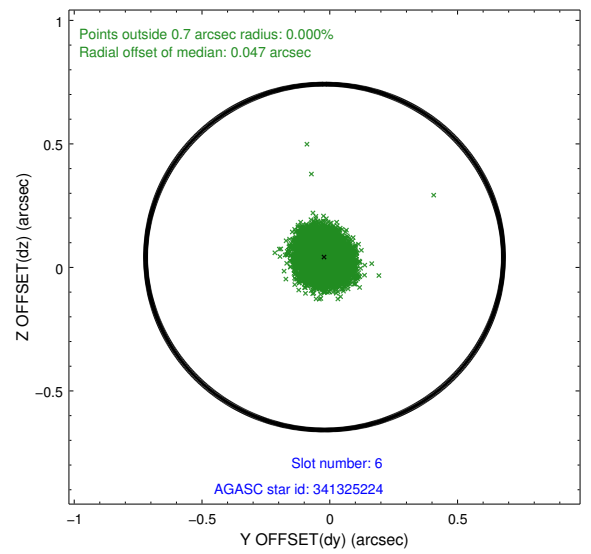
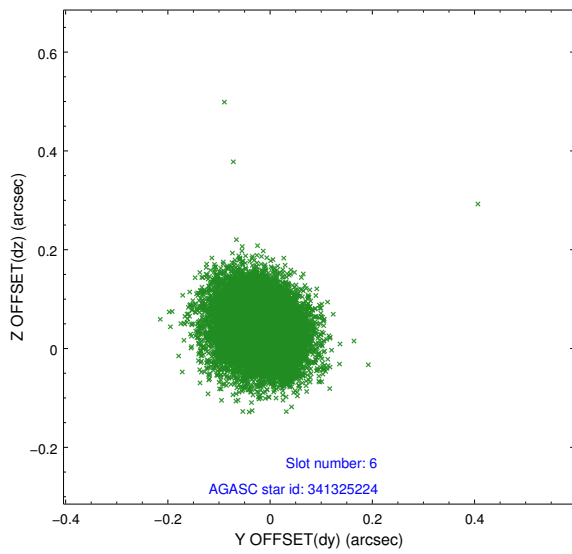
2.4.2 Slot 4



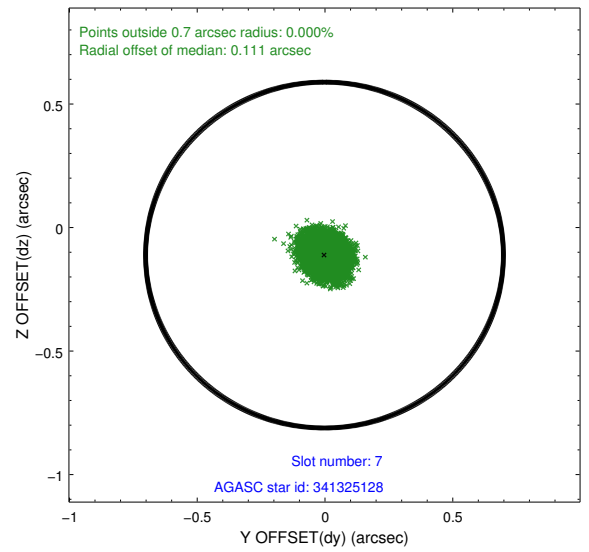
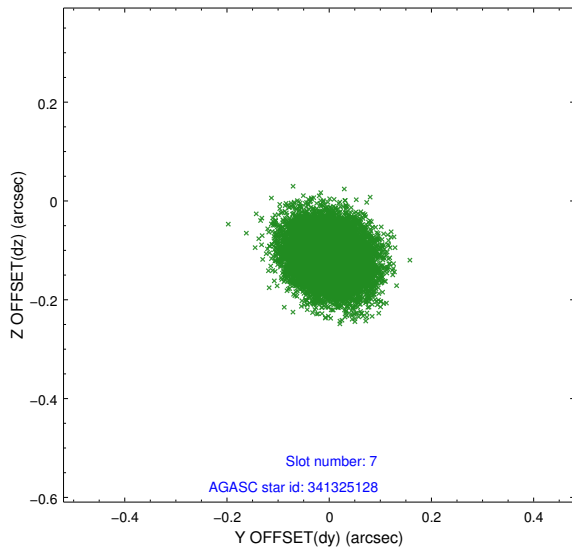
2.4.3 Slot 5



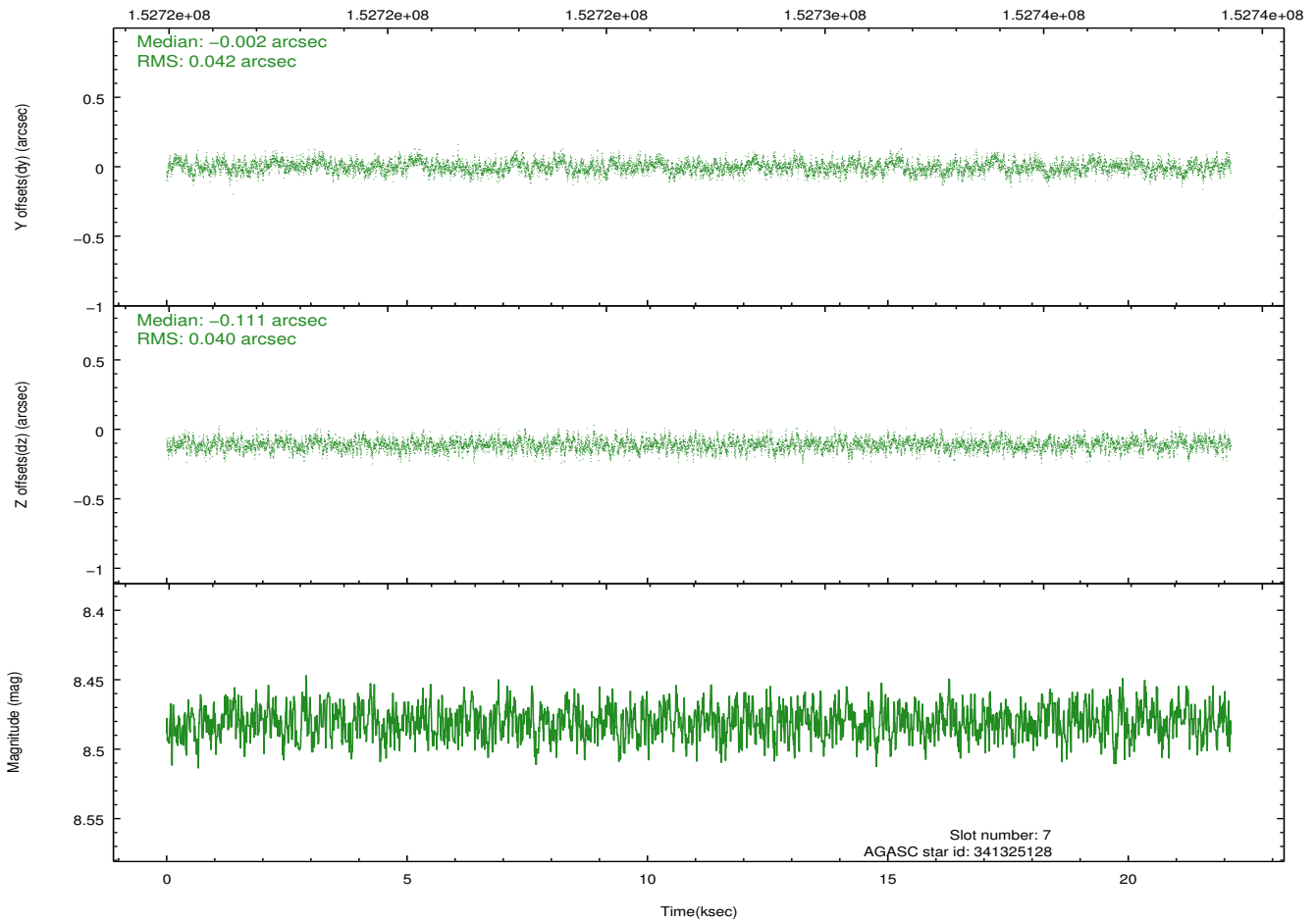
2.4.4 Slot 6



2.4.5 Slot 7

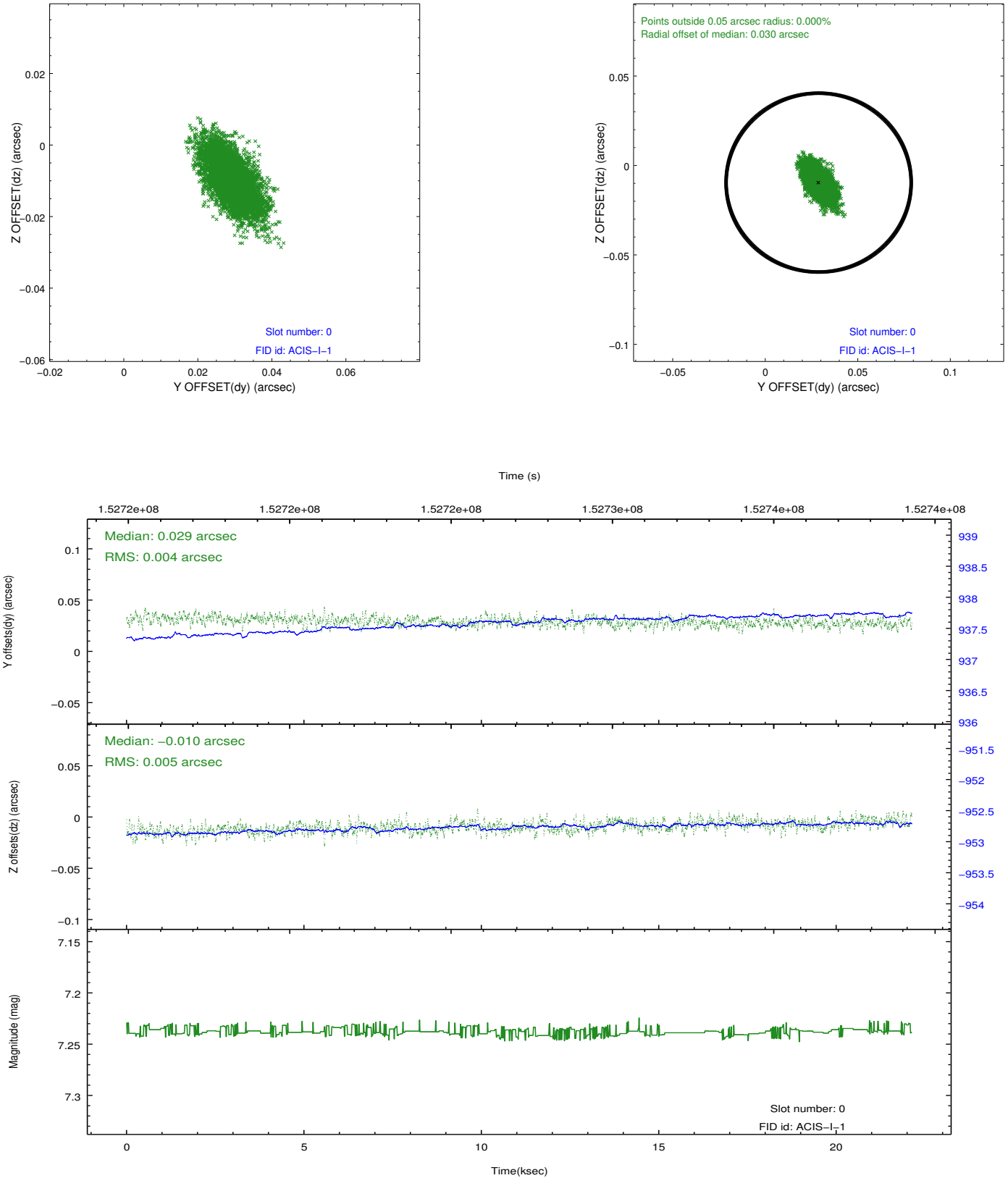


Time (s)

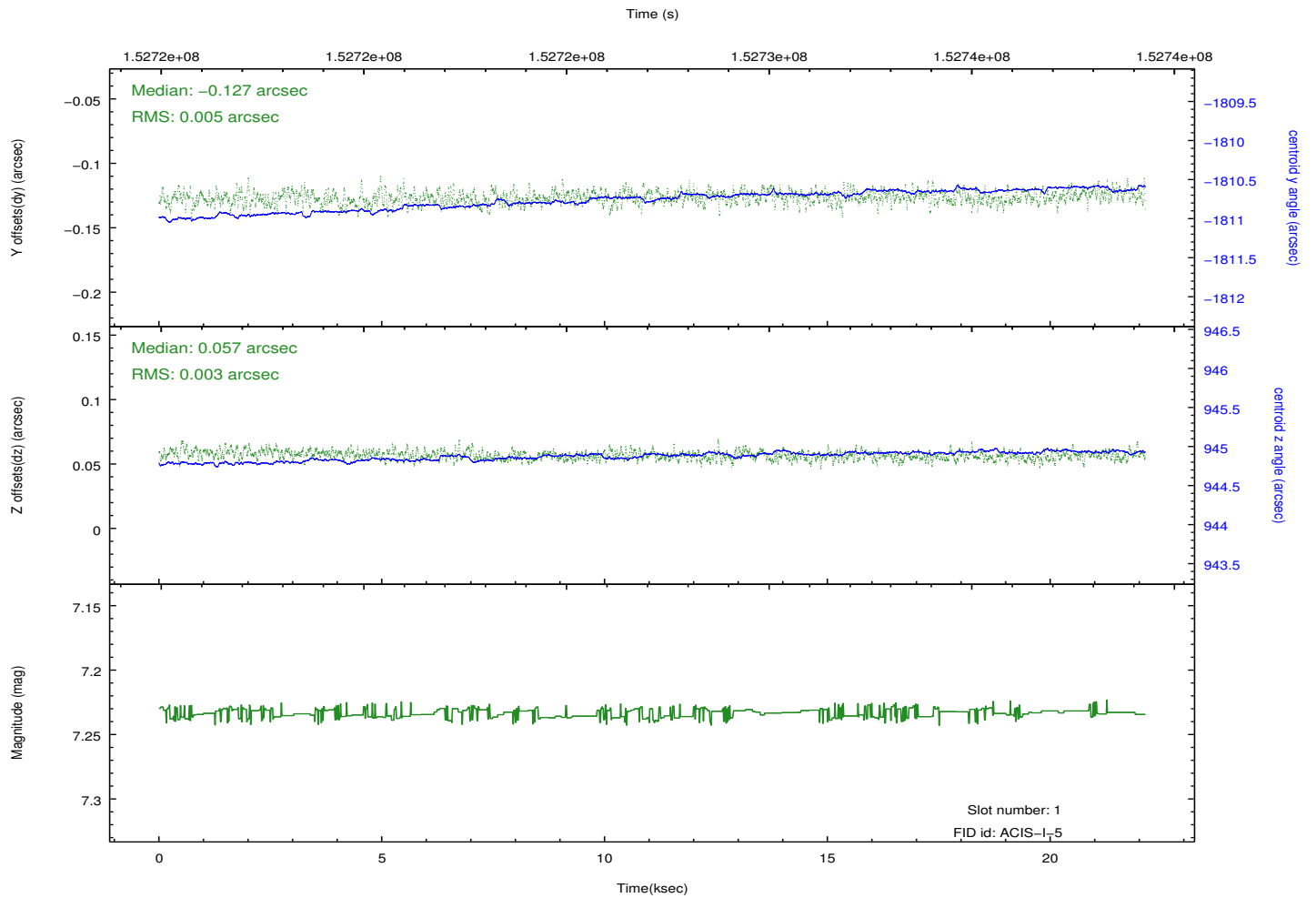
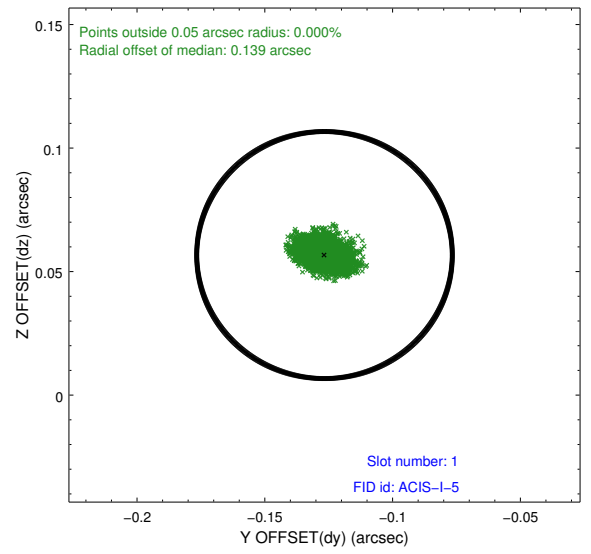
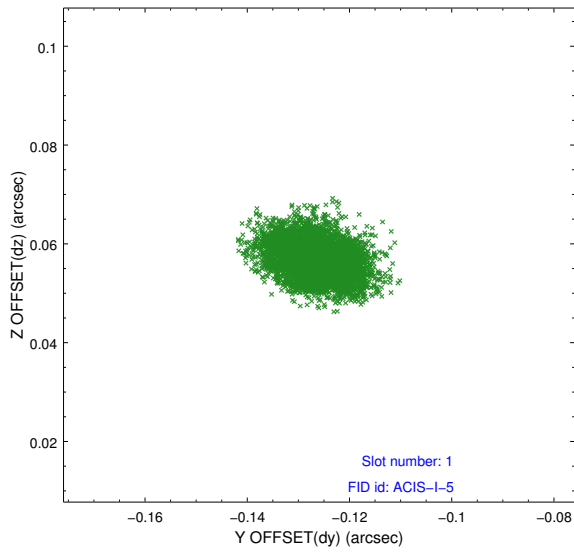


2.5 FID Slots

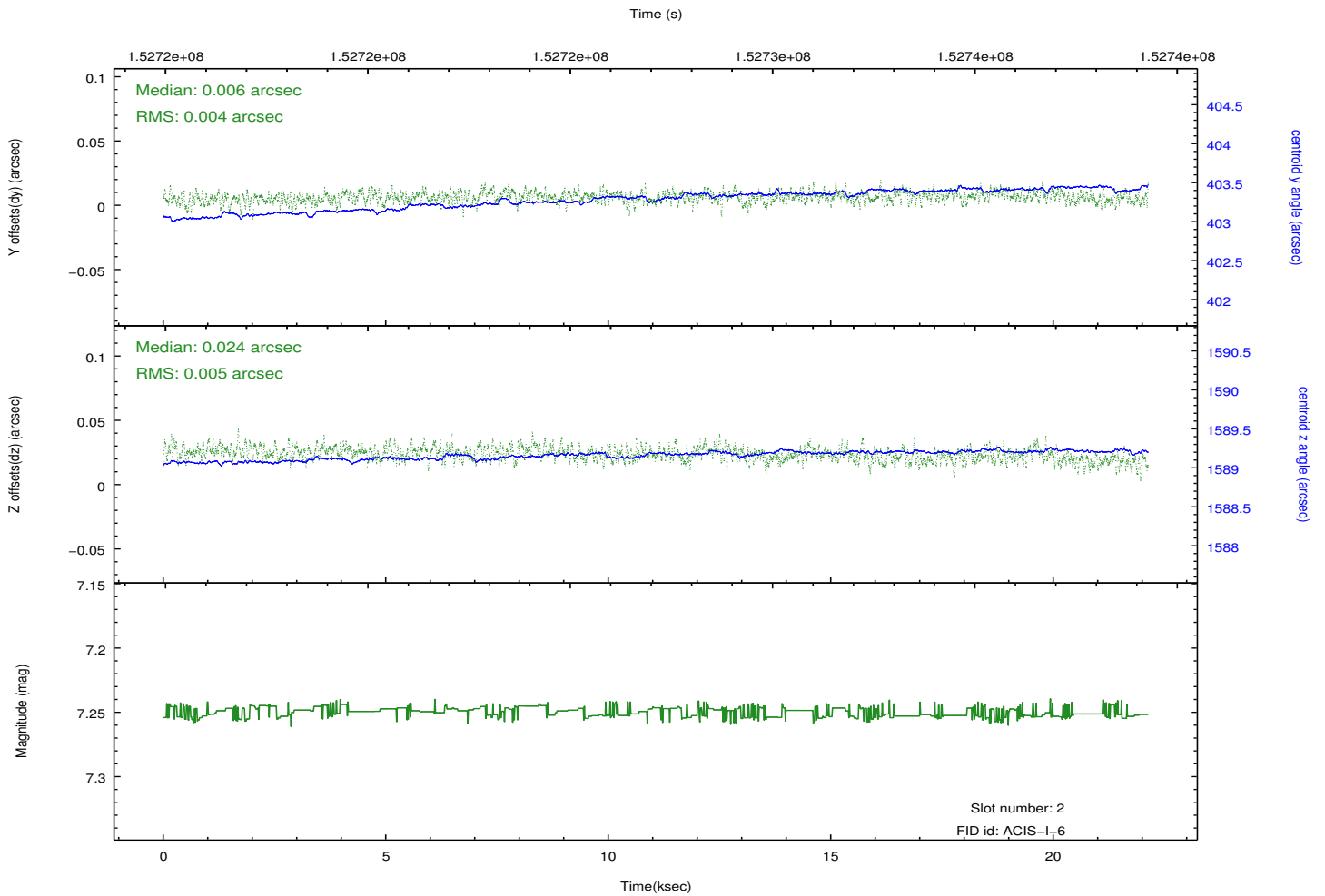
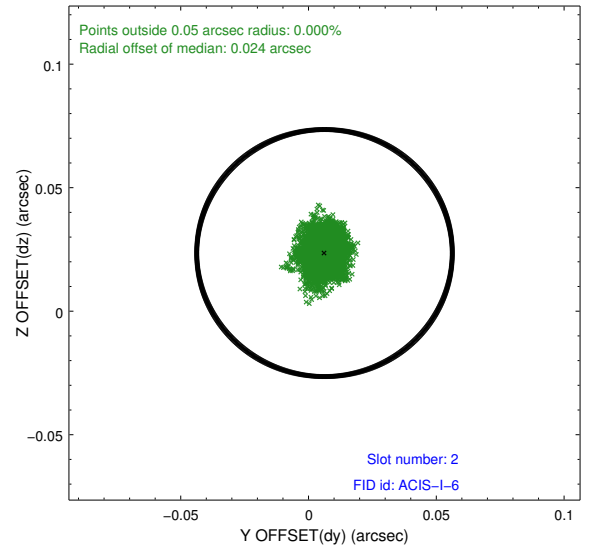
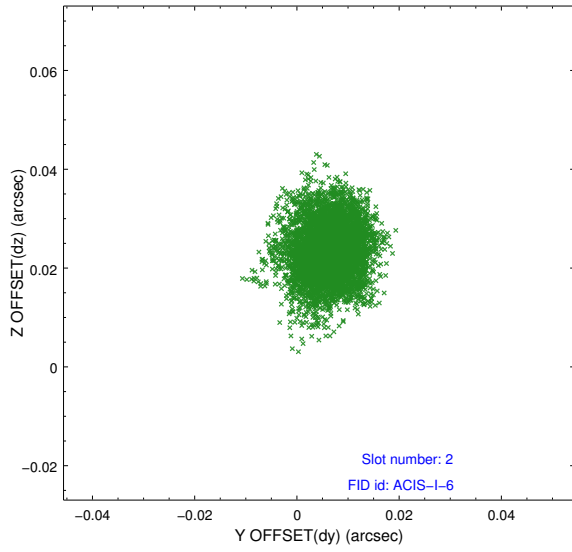
2.5.1 Slot 0



2.5.2 Slot 1



2.5.3 Slot 2



A Summary

A.1 Status

V&V Scientist	Beth Sundheim
V&V Date (YYYY-MM-DD)	2012.12.12
V&V Edition	1
V&V Disposition and Status	OK
V&V Charge Time	21.12

A.2 Comments