

V&V Reference Report

L2 ASCDS Version : 8.4.5

Observation 3460 - L2 Version 3
Chandra X-Ray Center

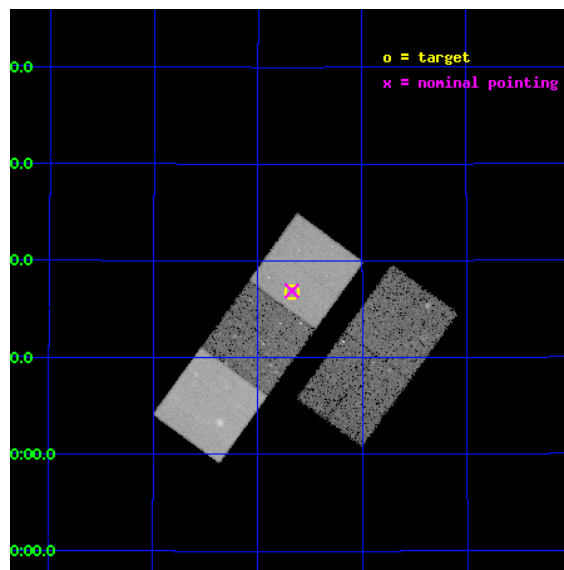
L2 Processing Date : Nov 5 2012

Contents

1	Front	2
2	OBI	3
2.1	OBI	3
2.1.1	Images	3
2.1.2	Bias	3
2.1.3	Parameters	4
2.1.4	Events	4
2.2	Compared Parameters	5
2.3	Aspect	6
2.4	Star Slots	9
2.4.1	Slot 3	9
2.4.2	Slot 4	10
2.4.3	Slot 5	11
2.4.4	Slot 6	12
2.4.5	Slot 7	13
2.5	FID Slots	14
2.5.1	Slot 0	14
2.5.2	Slot 1	15
2.5.3	Slot 2	16
A	Summary	17
A.1	Status	17
A.2	Comments	17

1 Front

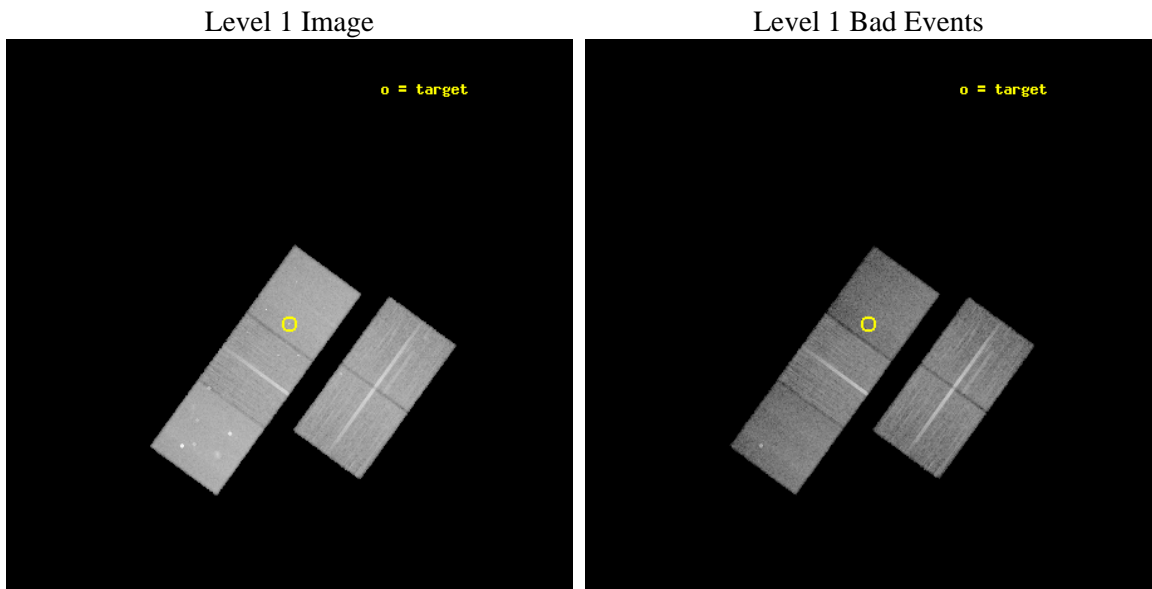
seq_num	800294	Sequence number
obs_id	3460	Observation id
title	THE HOST GALAXIES OF TIME DELAY LENSES: AN INDEPENDENT ROUTE TO THE HUBBLE CONSTANT	Proposal title
observer	Prof. Christopher Kochanek	Principal investigator
object	B1600+434	Source name
dtcycle	0	
cycle	P	events from which exps? Prim/Second/Both
ra_targ	240.418333	Observer's specified target RA [deg]
dec_targ	43.279944	Observer's specified target Dec [deg]
ra_nom	240.41845222246	Nominal RA [deg]
dec_nom	43.281831346948	Nominal Dec [deg]
roll_nom	305.97481856137	Nominal Roll [deg]
revision	3	Processing version of data
ontime	30575.299941182	Sum of GTIs [s]
livetime	30175.811138242	Livetime [s]
ontime2	30572.158970982	Sum of GTIs [s]
ontime3	30569.017990798	Sum of GTIs [s]
ontime5	30575.299941182	Sum of GTIs [s]
ontime6	30575.299941182	Sum of GTIs [s]
ontime7	30575.299941182	Sum of GTIs [s]
l2events	222434	Number of level 2 events



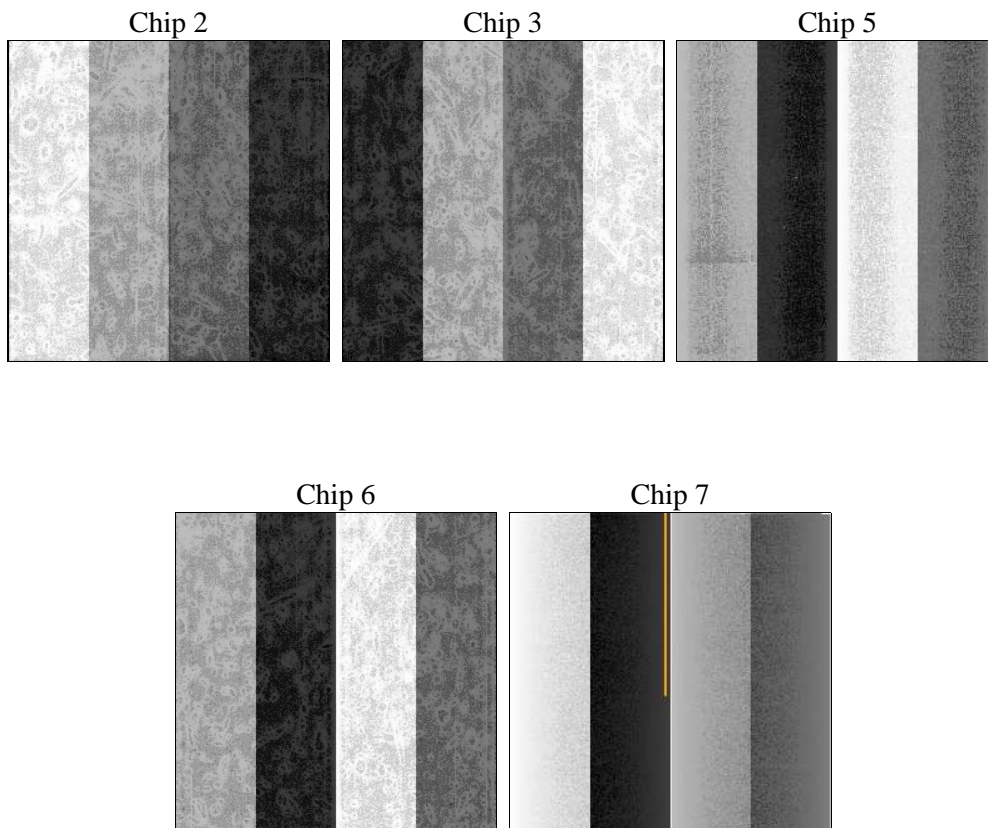
2 OBI

2.1 OBI

2.1.1 Images



2.1.2 Bias



2.1.3 Parameters

obi_num	0	Obi number	sched_exp_time	30402.000000	[s] Scheduled observation exposure time
ascdsver	8.4.5	Processing system revision	ontime	30575.299941182	Sum of GTIs [s]
caldbver	4.5.2	 	ontime2	30572.158970982	Sum of GTIs [s]
date	2012-11-05T04:09:48	Date and time of file creation	ontime3	30569.017990798	Sum of GTIs [s]
revision	3	Processing version of data	ontime5	30575.299941182	Sum of GTIs [s]
			ontime6	30575.299941182	Sum of GTIs [s]
			ontime7	30575.299941182	Sum of GTIs [s]
			l1events	901065	Number of level 1 events

2.1.4 Events

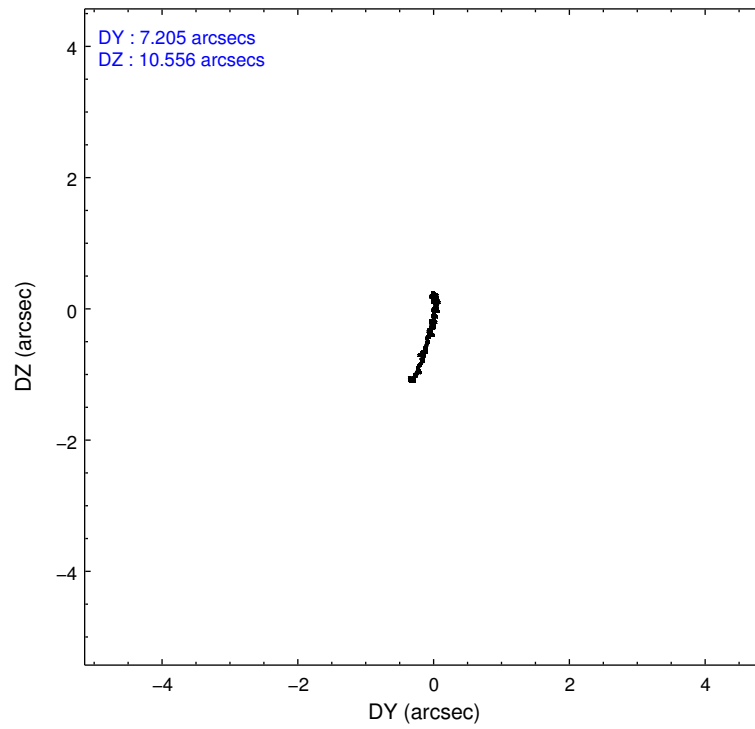
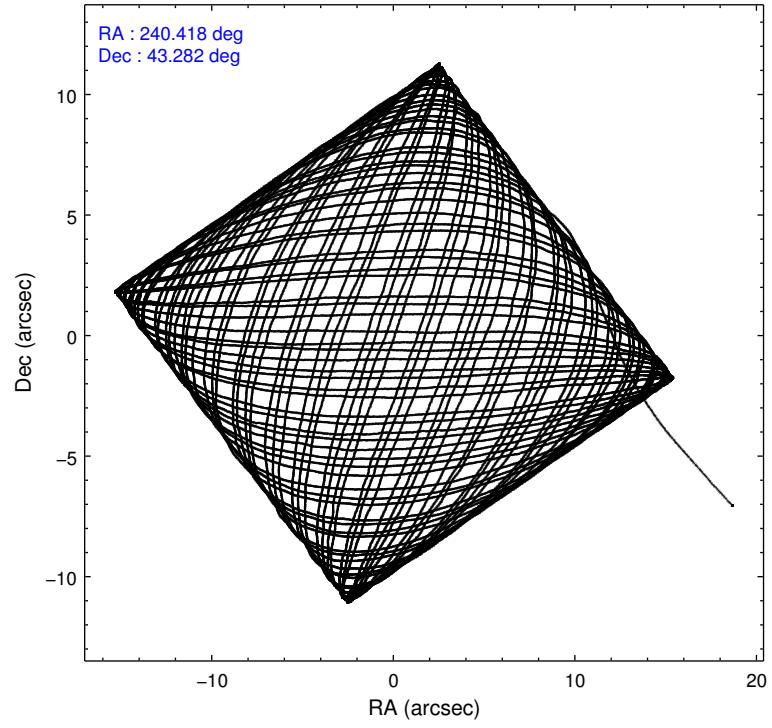
	ccd 2	ccd 3	ccd 5	ccd 6	ccd 7
level 1 events	168386	160722	223558	169128	179271
rejected events	152773	145803	110868	151337	97852
rejected %	90%	90%	49%	89%	54%

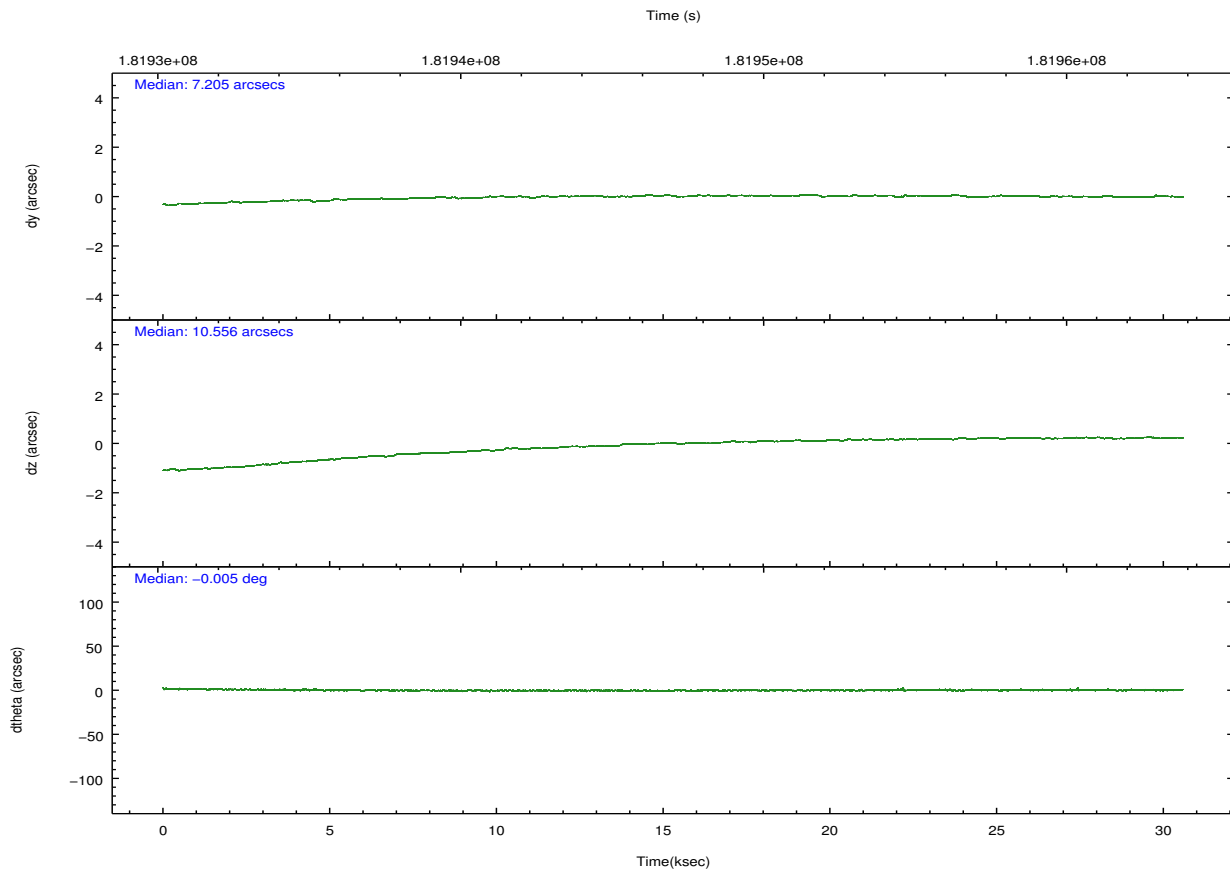
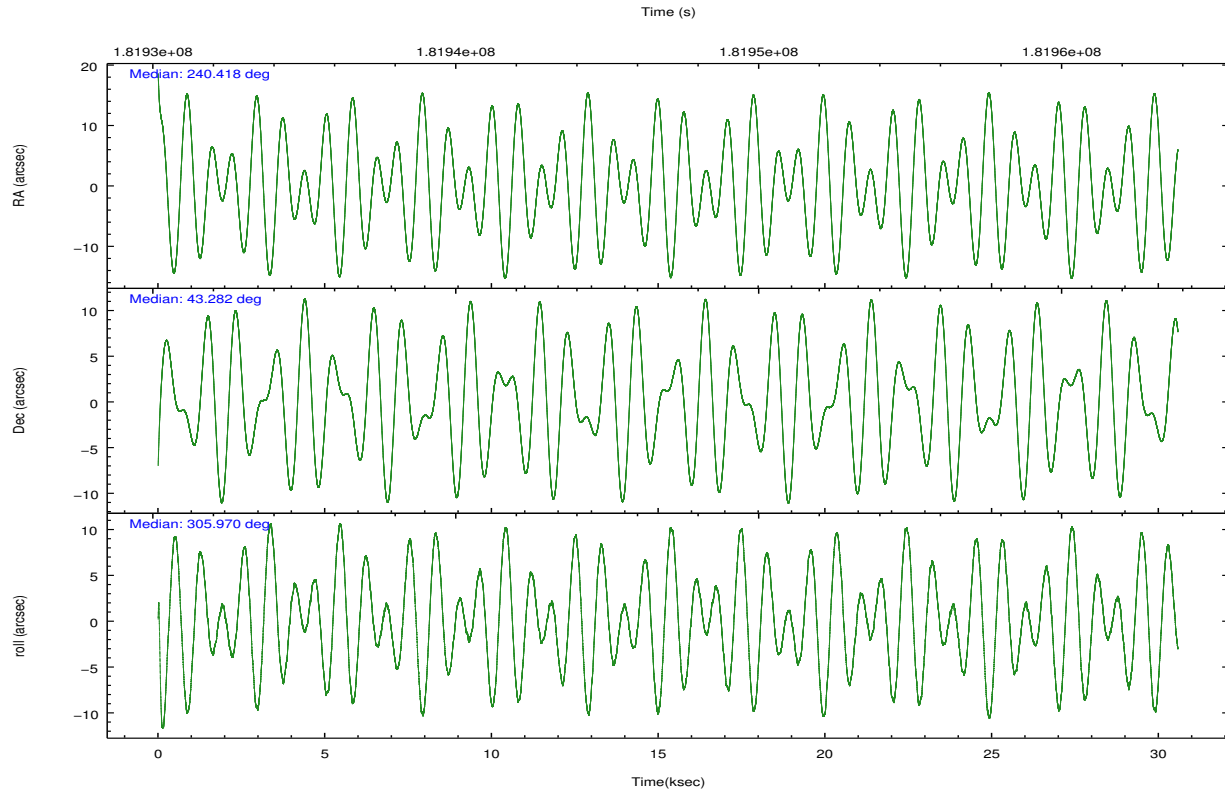
	ccd 2	ccd 3	ccd 5	ccd 6	ccd 7
grade 0 events	5692	5262	13812	6562	7445
	3%	3%	6%	3%	4%
grade 1 events	87	63	442	70	155
	0%	0%	0%	0%	0%
grade 2 events	3540	3143	33168	3775	16361
	2%	1%	14%	2%	9%
grade 3 events	1837	1776	4951	1925	7687
	1%	1%	2%	1%	4%
grade 4 events	1755	1749	4940	1909	7746
	1%	1%	2%	1%	4%
grade 5 events	5157	6152	17712	6467	18825
	3%	3%	7%	3%	10%
grade 6 events	2803	3004	55941	3639	42264
	1%	1%	25%	2%	23%
grade 7 events	147515	139573	92592	144781	78788
	87%	86%	41%	85%	43%

2.2 Compared Parameters

Parameter	Planned	Actual	Parameter	Planned	Actual
Instrument	ACIS	ACIS	Obspar format version number	7	7
Detector	ACIS-23567	ACIS-23567	Obspar file type	PREDICTED	ACTUAL
Grating	NONE	NONE	Obspar update status	NONE	UPDATED
Data mode	VFAINT	VFAINT	Number of optional ACIS chips dropped	0	0
Observation mode	POINTING	POINTING	On-chip summing requested	N	N
[deg] Pointing RA	240.384074	240.4184522224609	Subarray requested	NONE	NONE
[deg] Pointing Dec	43.292569	43.28183134694847	Alternating exposures requested	N	N
[deg] Pointing Roll	305.841757	305.9748185613689	[s] Primary exposure time	0.000000	3.1
[mm] SIM focus pos	-0.684267	-0.6828225247311905			
[mm] SIM defocus	0	0.001444936568705701			
[mm] SIM translation stage pos	-190.132523	-190.1425803651734			
[mm] SIM translation stage offset	0	0.01005778216563158			
[s] Observation start time (MET)	181931898.184000	181930890.45393			
Observation start date	2003-10-07T16:37:14	2003-10-07T16:21:30			
[s] Observation end time (MET)	181962300.184000	181962934.5178			
Observation end date	2003-10-08T01:03:56	2003-10-08T01:15:34			
Read mode	TIMED	TIMED			

2.3 Aspect



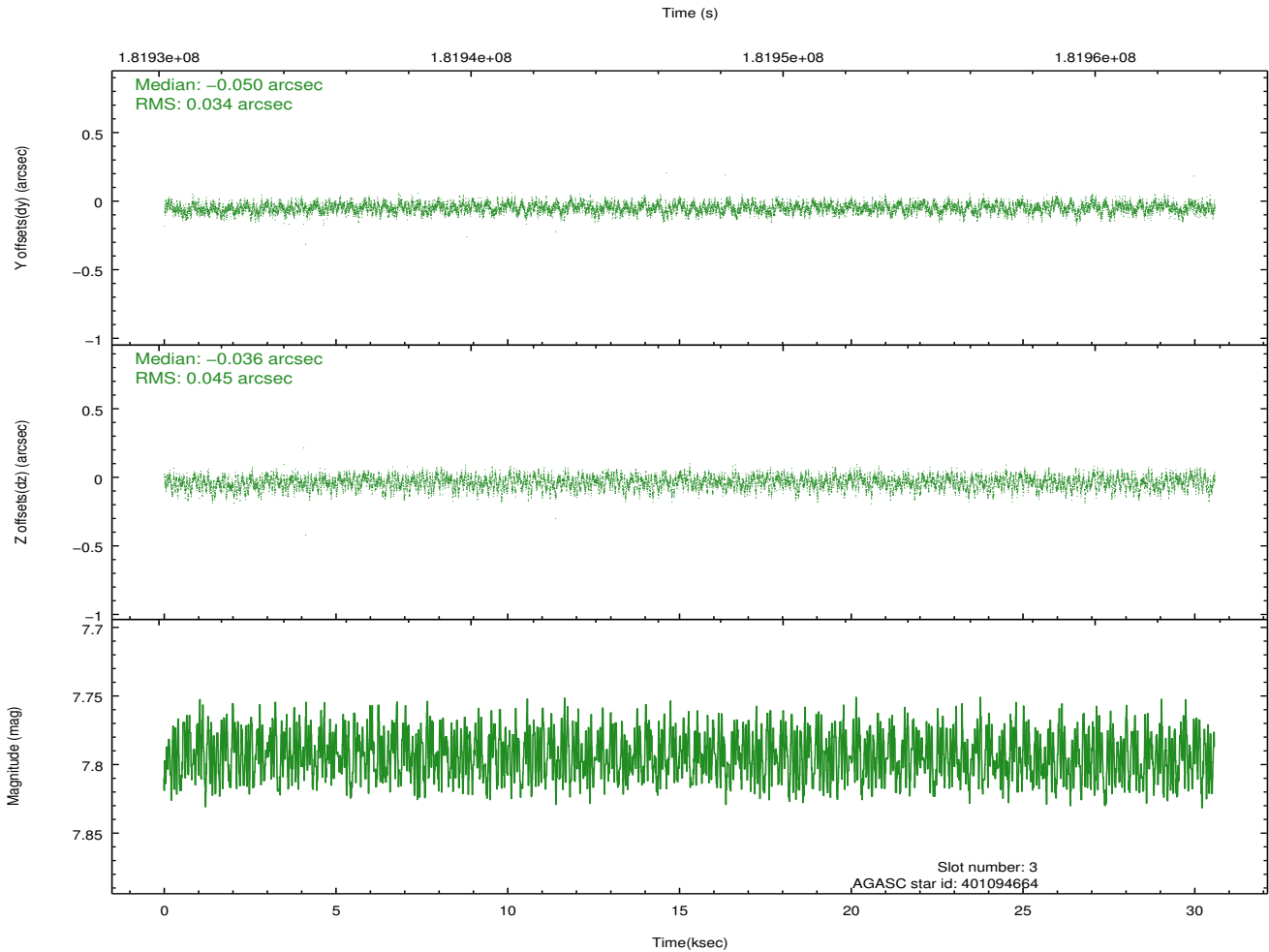
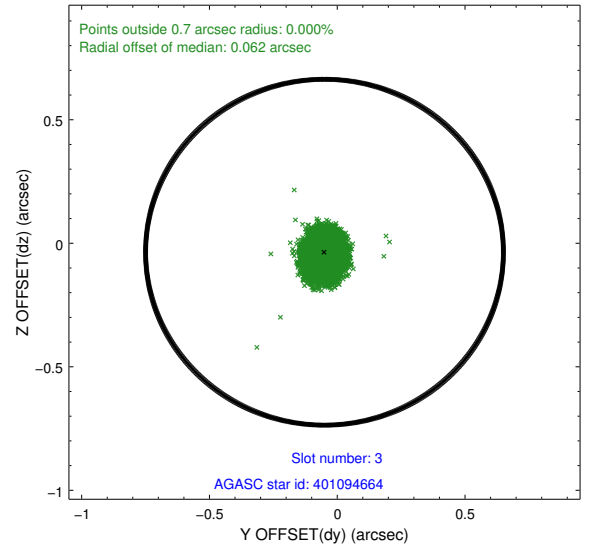
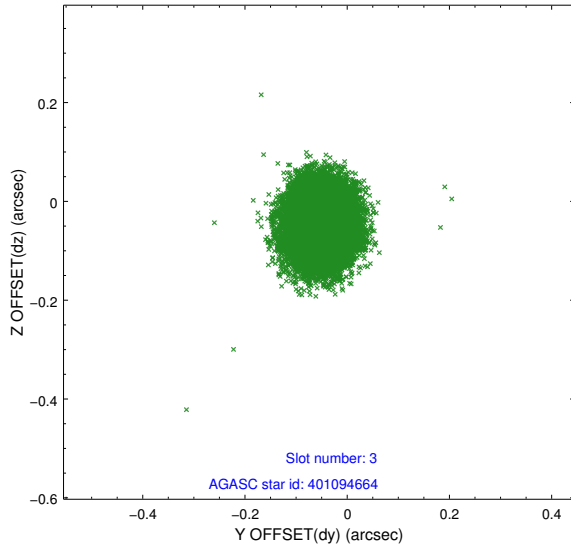


Slot Statistics

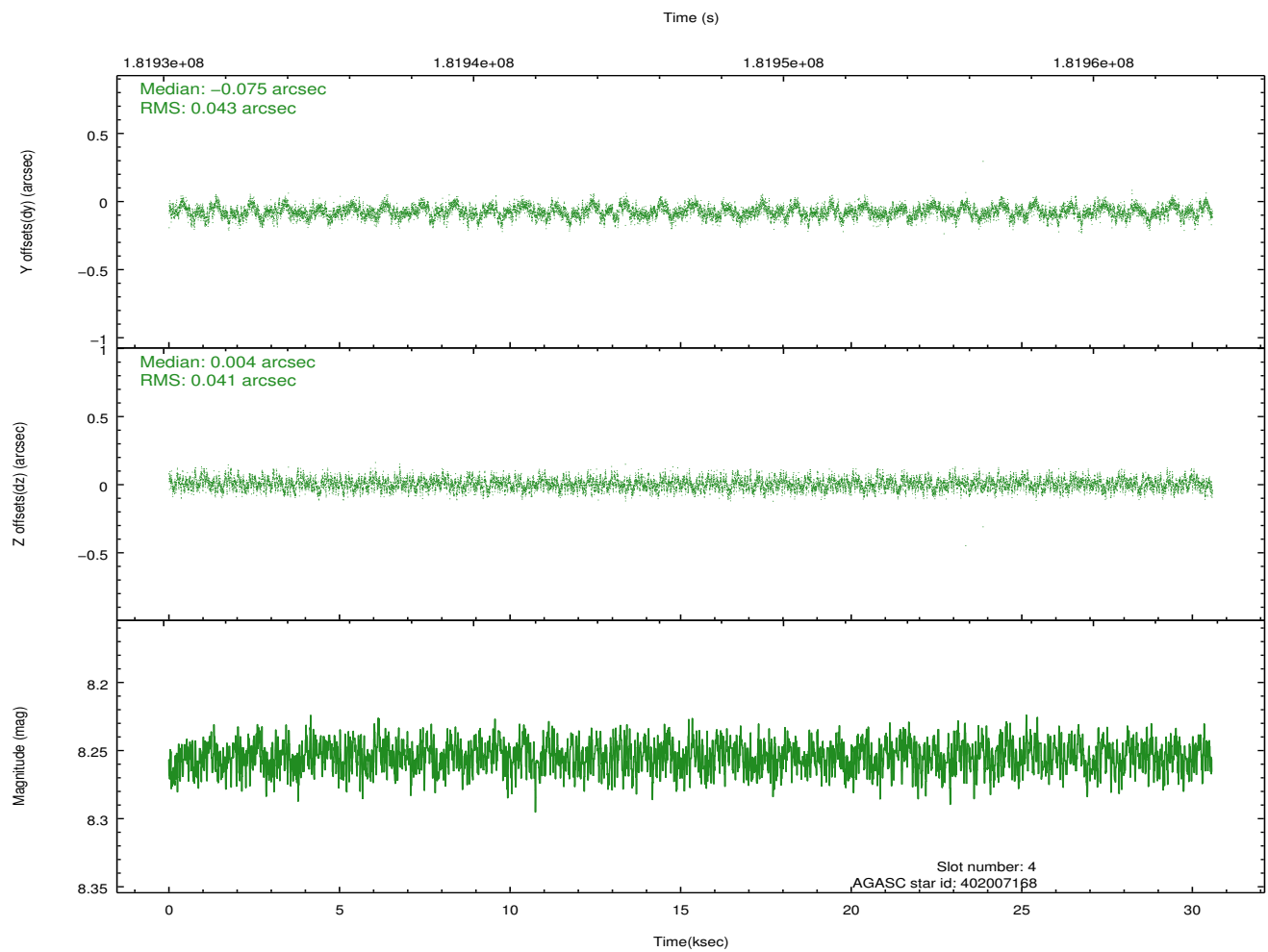
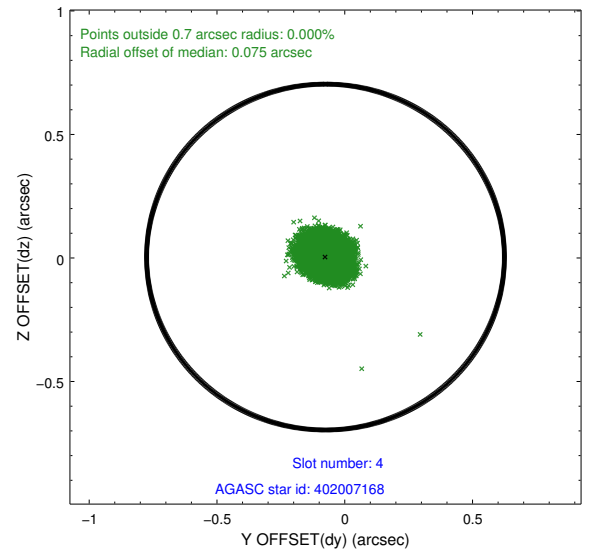
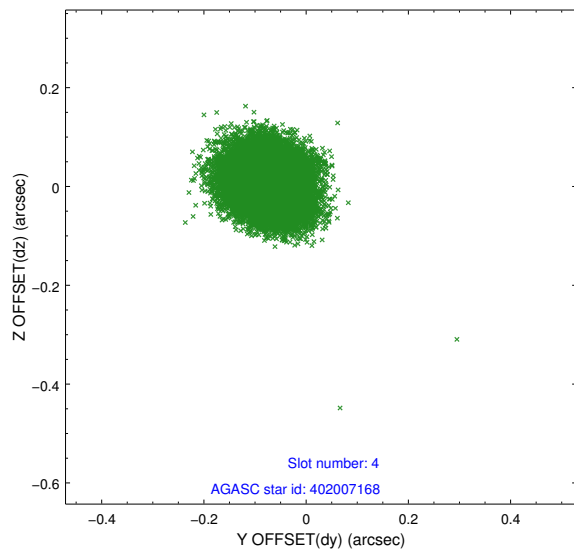
slot	status	id	mag	n_pts	med_dy	med_dz	dr1	dr2	ra	dec	mean_y	mean_z
0	FID	ACIS-S-1	7.18	7459	-0.001	-0.034	0.018	0.029	0.000000	0.000000	936.11	-1727.26
1	FID	ACIS-S-4	7.20	7459	0.034	0.029	0.013	0.026	0.000000	0.000000	2153.58	176.89
2	FID	ACIS-S-5	7.23	7459	-0.060	0.018	0.009	0.027	0.000000	0.000000	-1812.74	170.54
3	GUIDE	401094664	7.79	14919	-0.050	-0.036	0.060	0.097	239.606983	43.213711	-970.86	-1813.40
4	GUIDE	402007168	8.25	14911	-0.075	0.004	0.063	0.101	240.453077	43.473225	-421.40	526.99
5	GUIDE	402008032	9.14	14914	0.079	-0.072	0.073	0.118	240.713470	43.039771	1244.22	170.95
6	GUIDE	402009136	9.12	14914	-0.012	0.032	0.065	0.108	240.344834	43.795711	-1527.66	978.11
7	GUIDE	402009440	8.74	14914	0.058	0.077	0.060	0.100	240.439336	42.842846	1398.28	-829.23

2.4 Star Slots

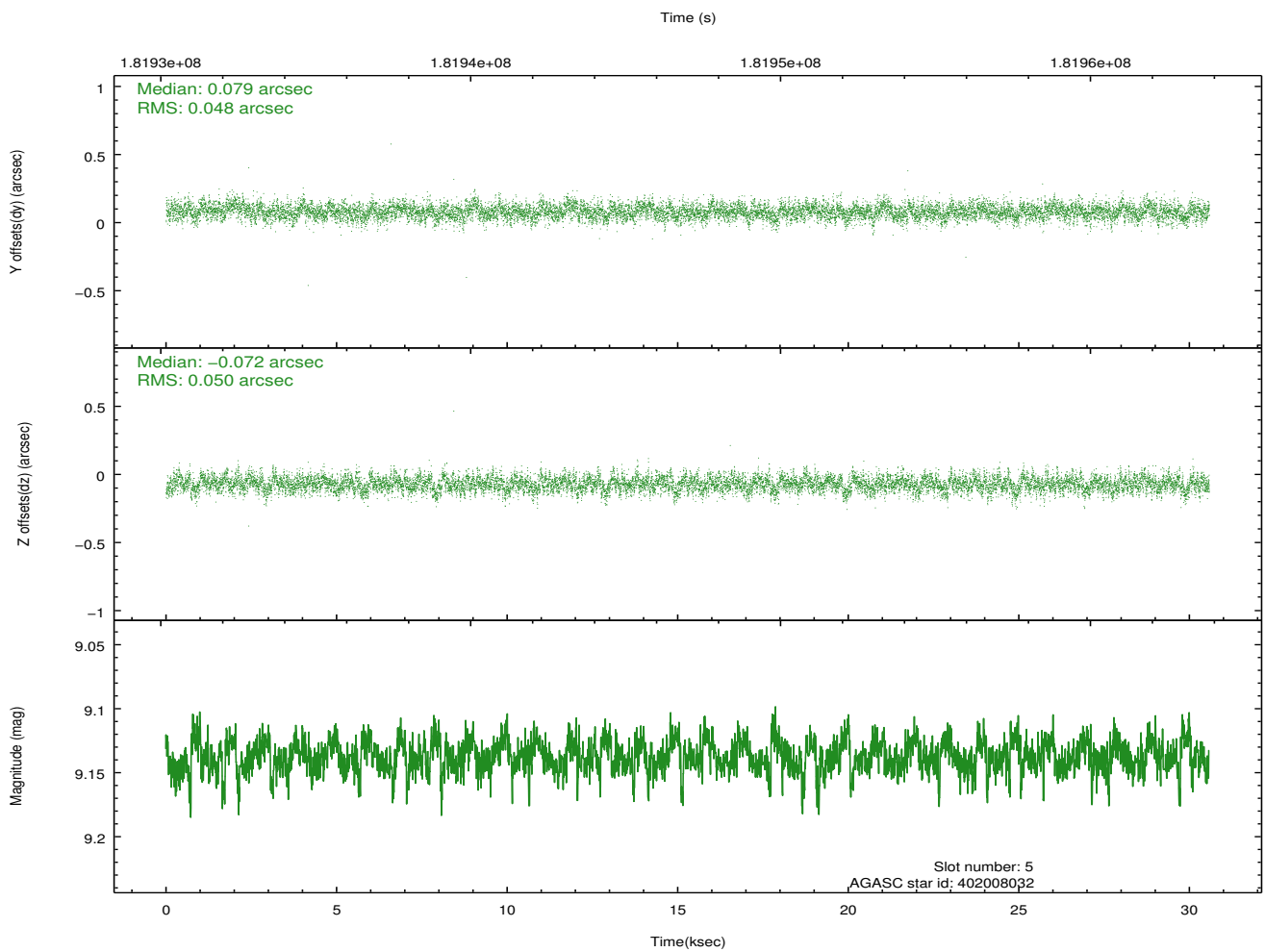
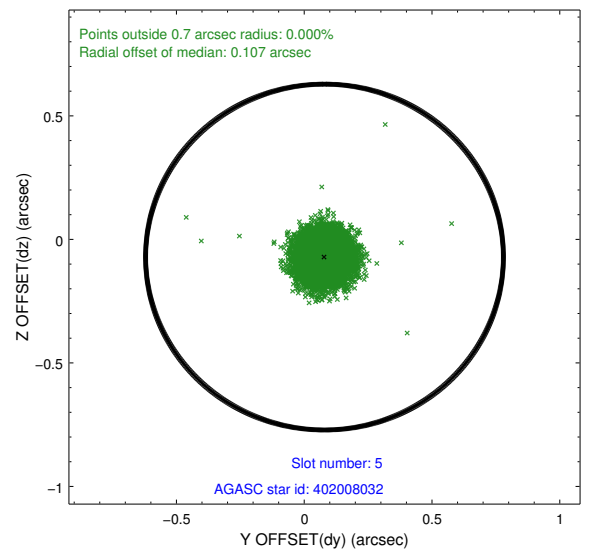
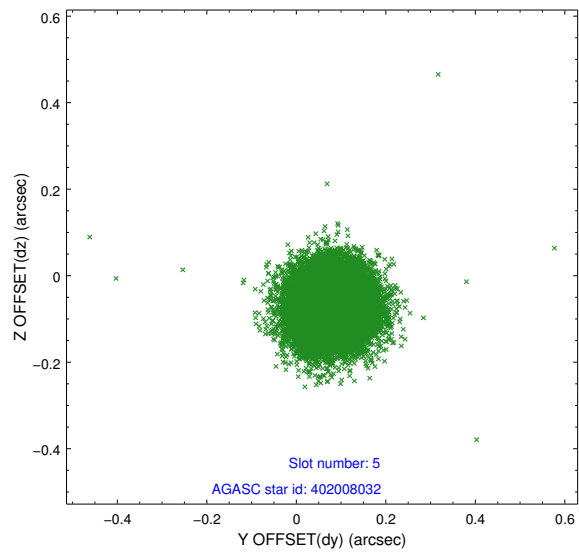
2.4.1 Slot 3



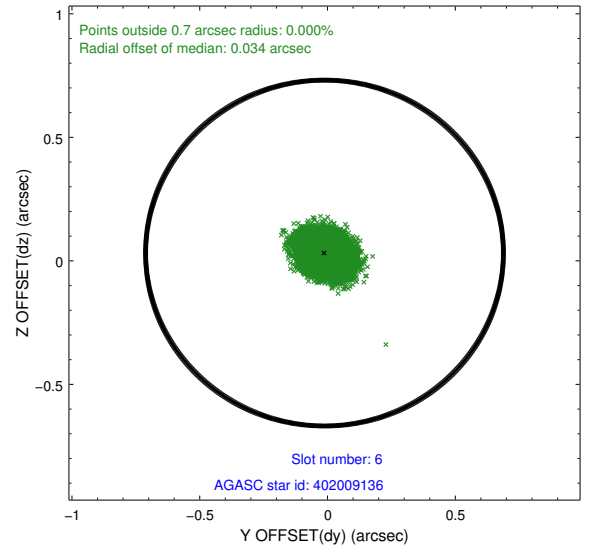
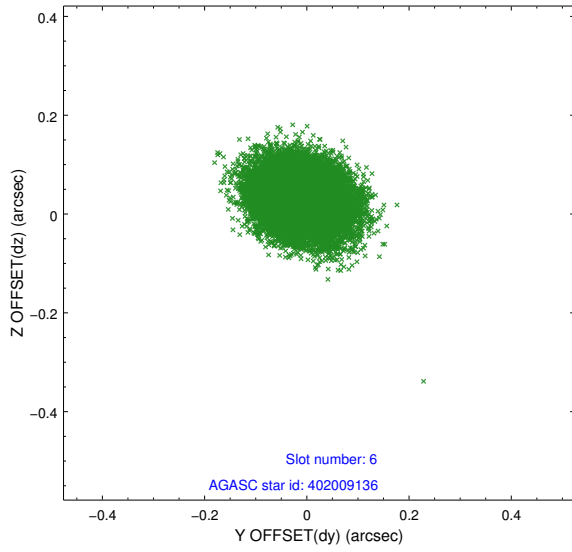
2.4.2 Slot 4



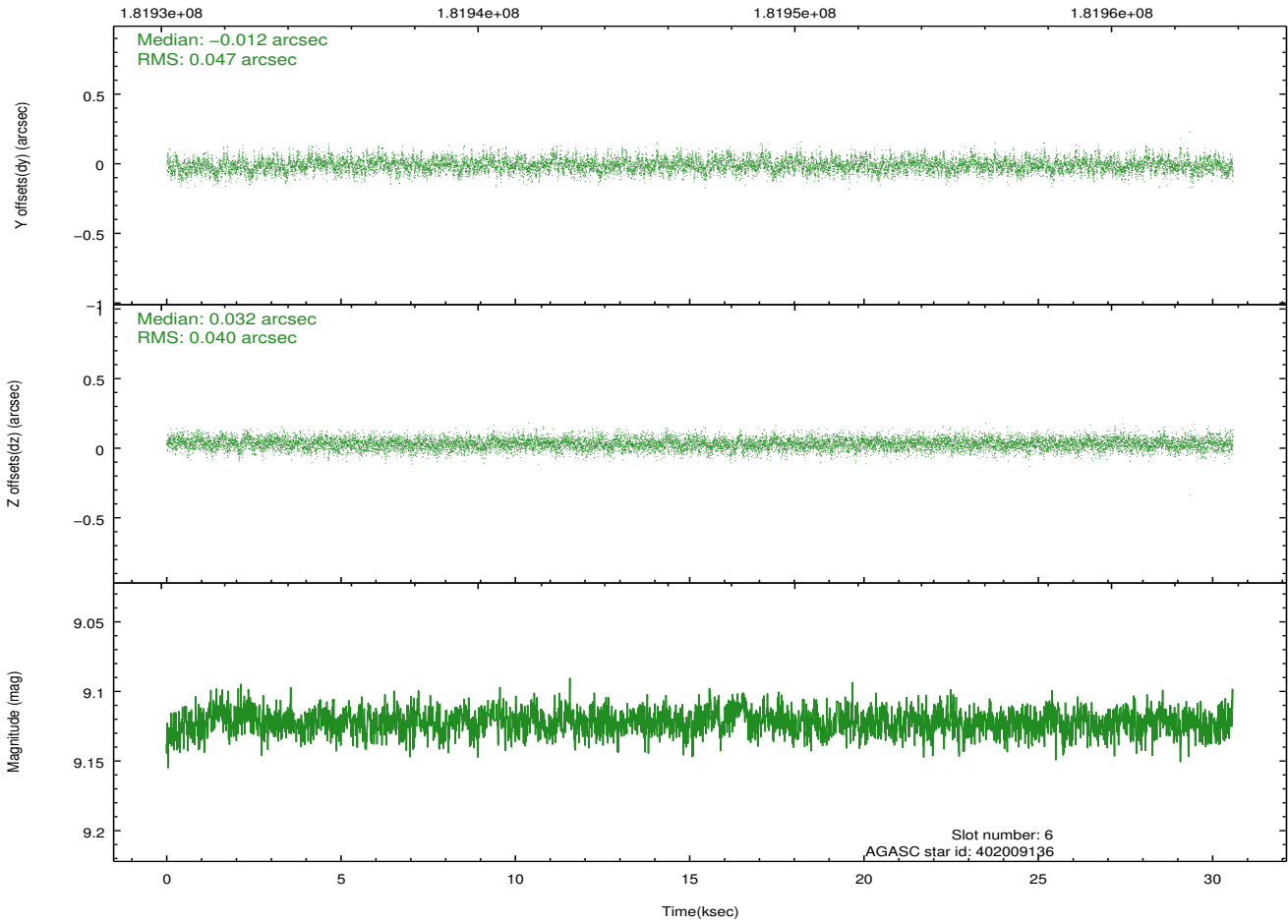
2.4.3 Slot 5



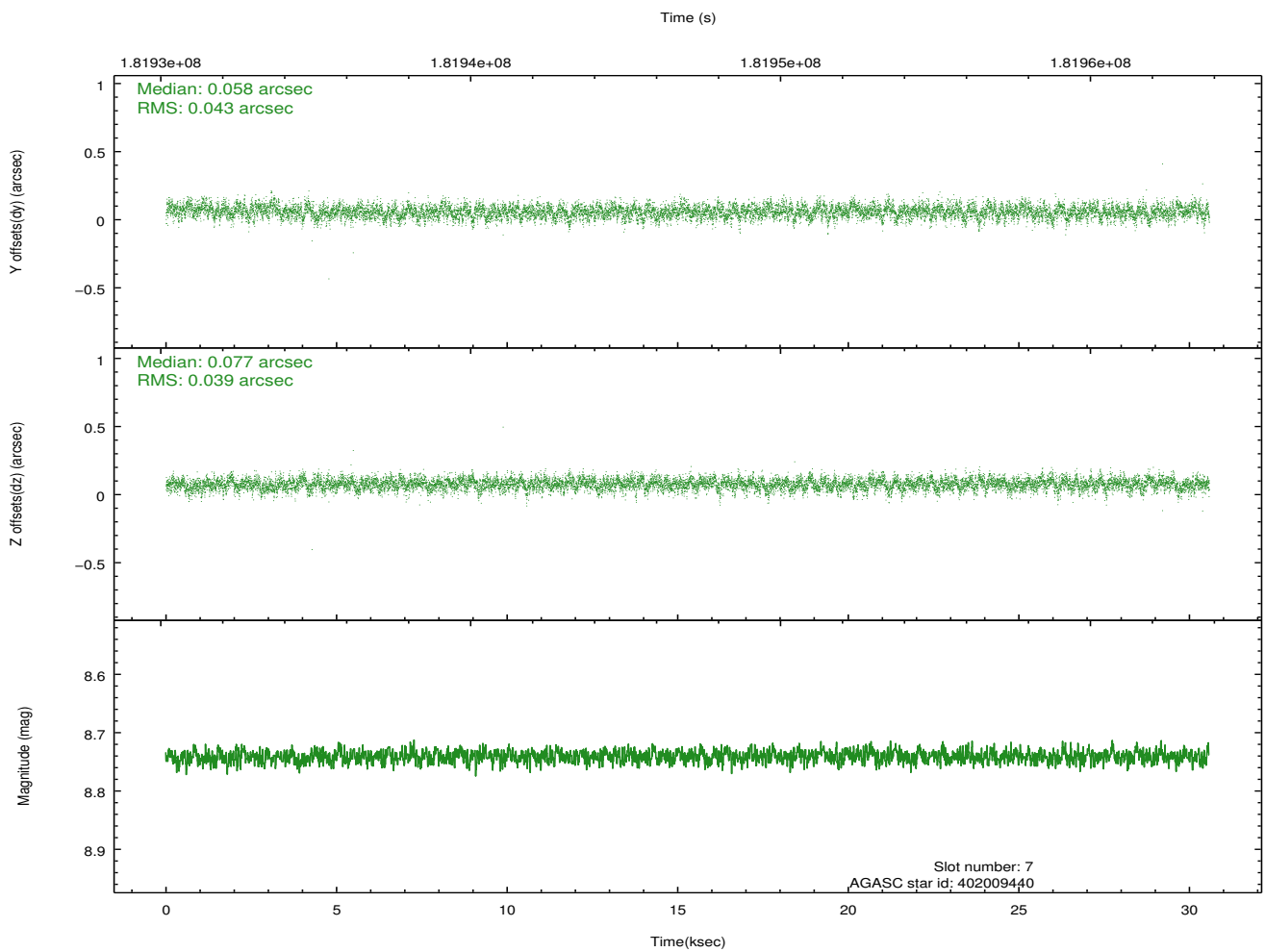
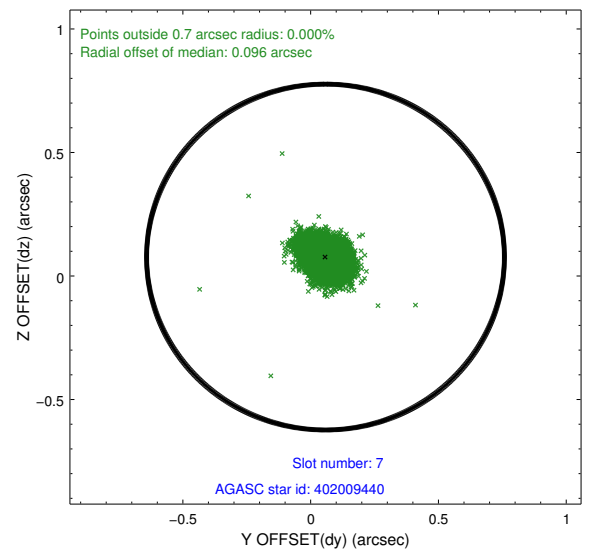
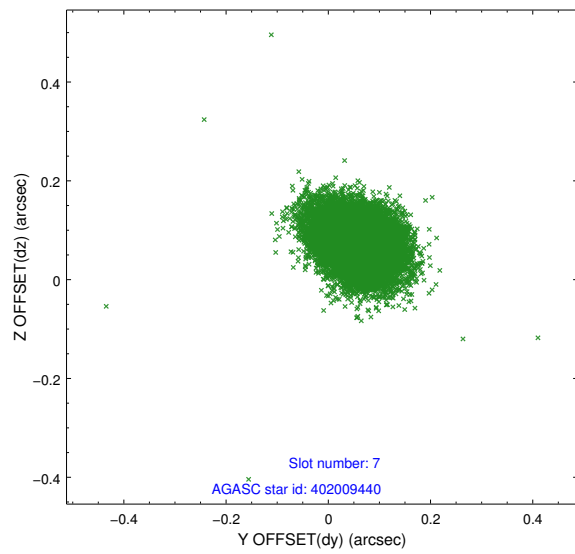
2.4.4 Slot 6



Time (s)

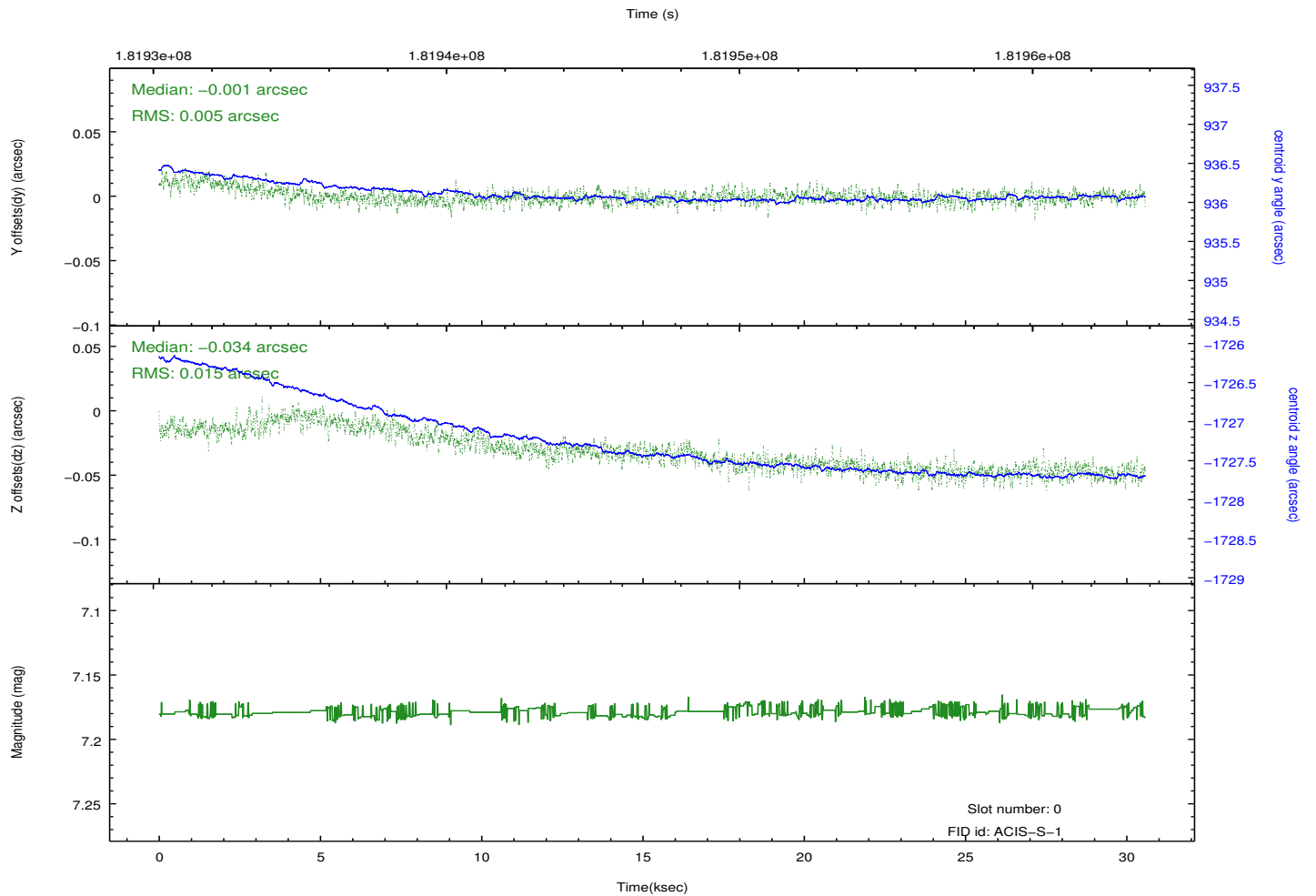
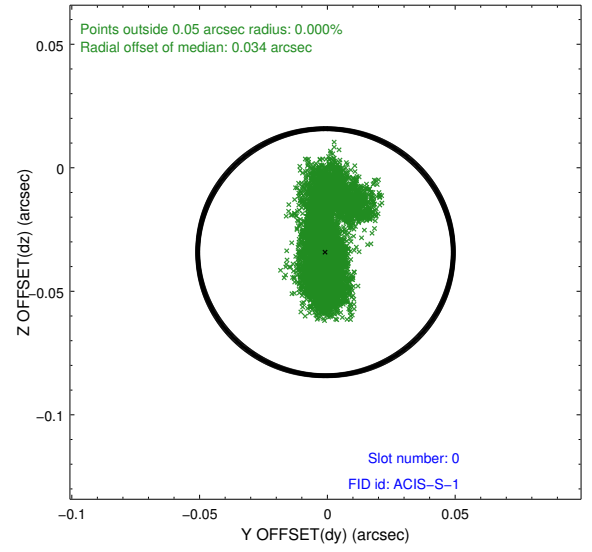
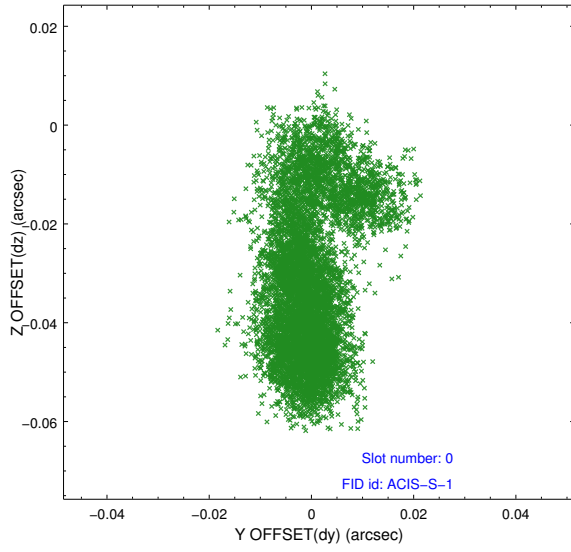


2.4.5 Slot 7

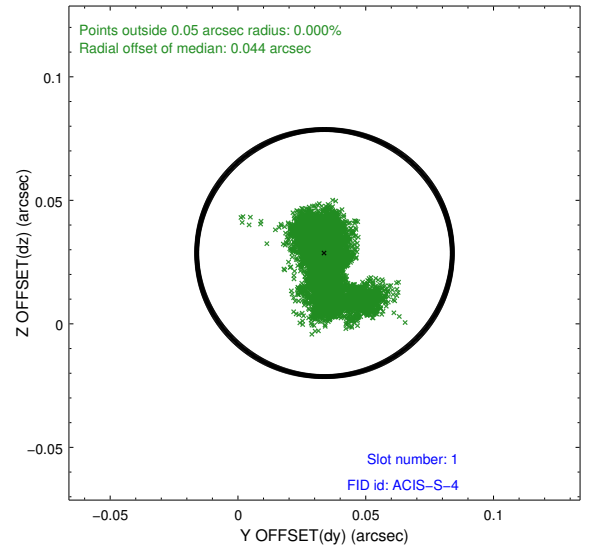
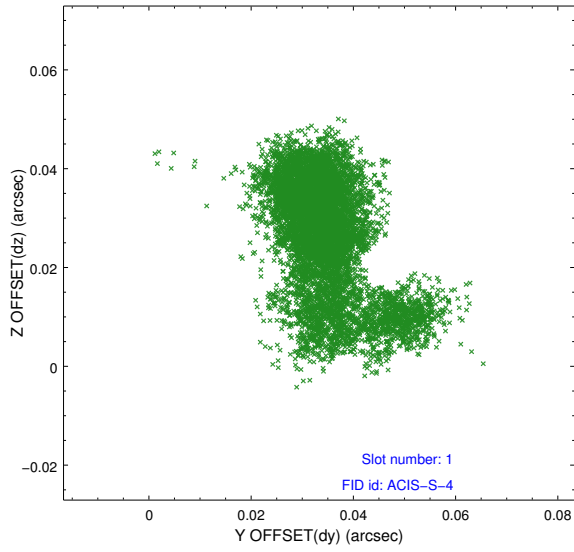


2.5 FID Slots

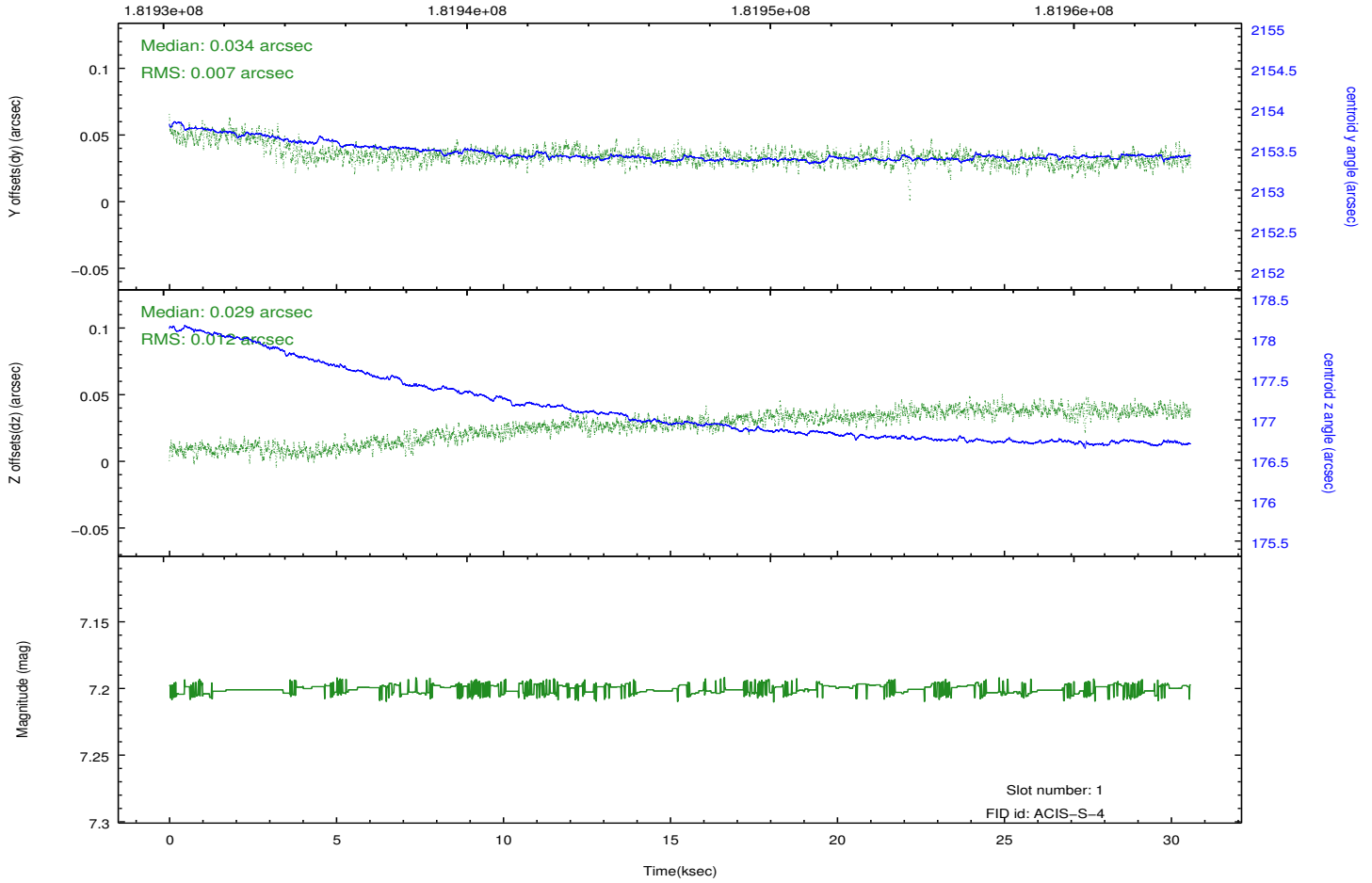
2.5.1 Slot 0



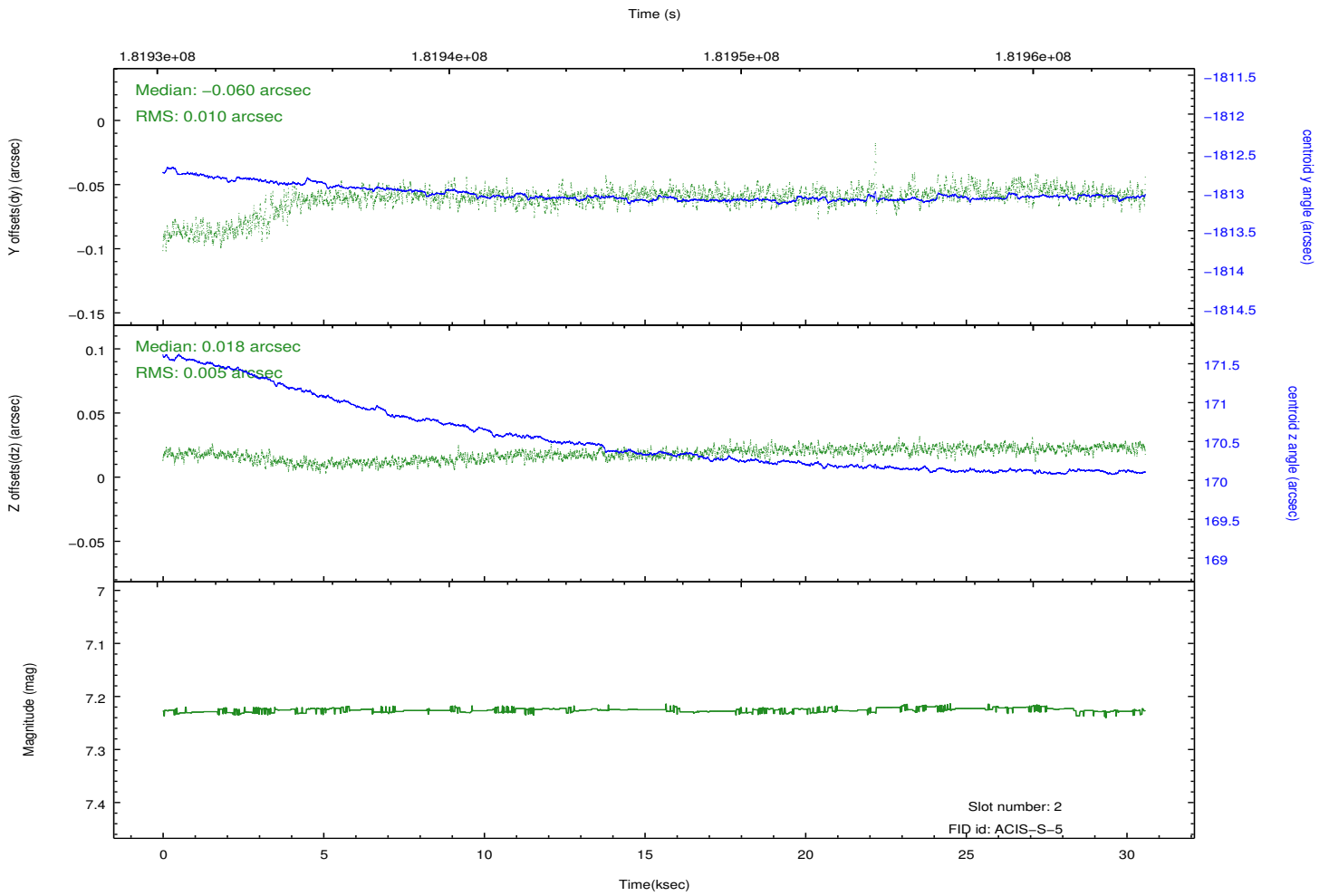
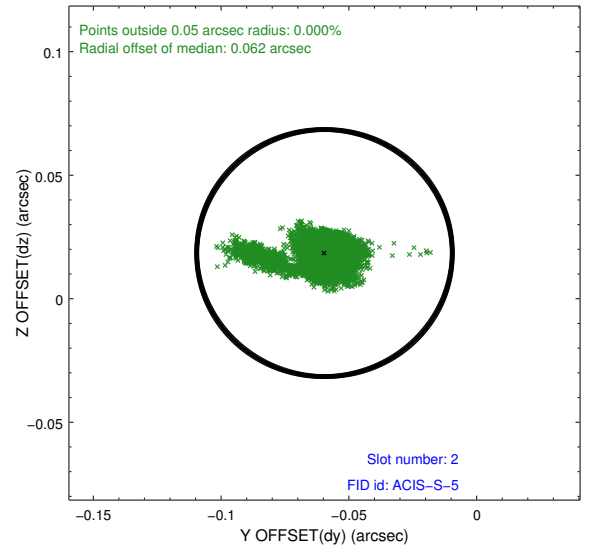
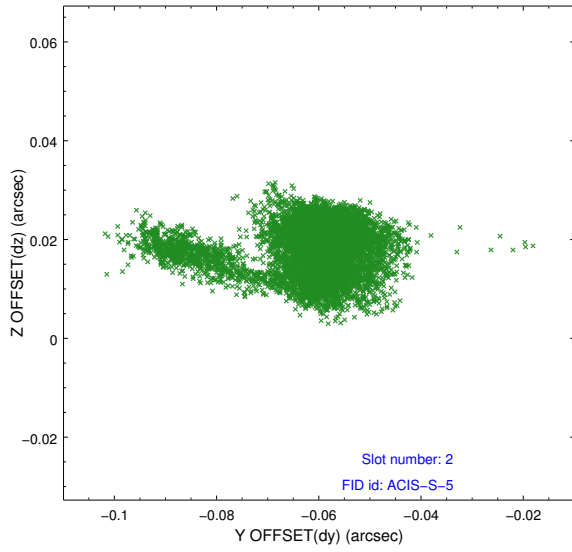
2.5.2 Slot 1



Time (s)



2.5.3 Slot 2



A Summary

A.1 Status

V&V Scientist	Jen Lauer
V&V Date (YYYY-MM-DD)	2012.12.03
V&V Edition	1
V&V Disposition and Status	OK
V&V Charge Time	30.575

A.2 Comments

Joint Proposal: CX0-HST