

V&V Reference Report

L2 ASCDS Version : 8.4.5

Observation 350 - L2 Version 4
Chandra X-Ray Center

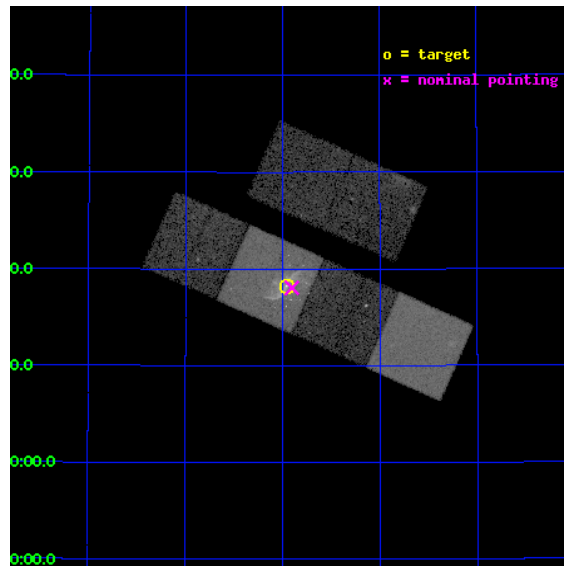
L2 Processing Date : Aug 25 2012

Contents

1	Front	2
2	OBI	3
2.1	OBI	3
2.1.1	Images	3
2.1.2	Bias	3
2.1.3	Parameters	4
2.1.4	Events	4
2.2	Compared Parameters	5
2.3	Aspect	6
2.4	Star Slots	9
2.4.1	Slot 3	9
2.4.2	Slot 4	10
2.4.3	Slot 5	11
2.4.4	Slot 6	12
2.4.5	Slot 7	13
2.5	FID Slots	14
2.5.1	Slot 0	14
2.5.2	Slot 1	15
2.5.3	Slot 2	16
A	Summary	17
A.1	Status	17
A.2	Comments	17

1 Front

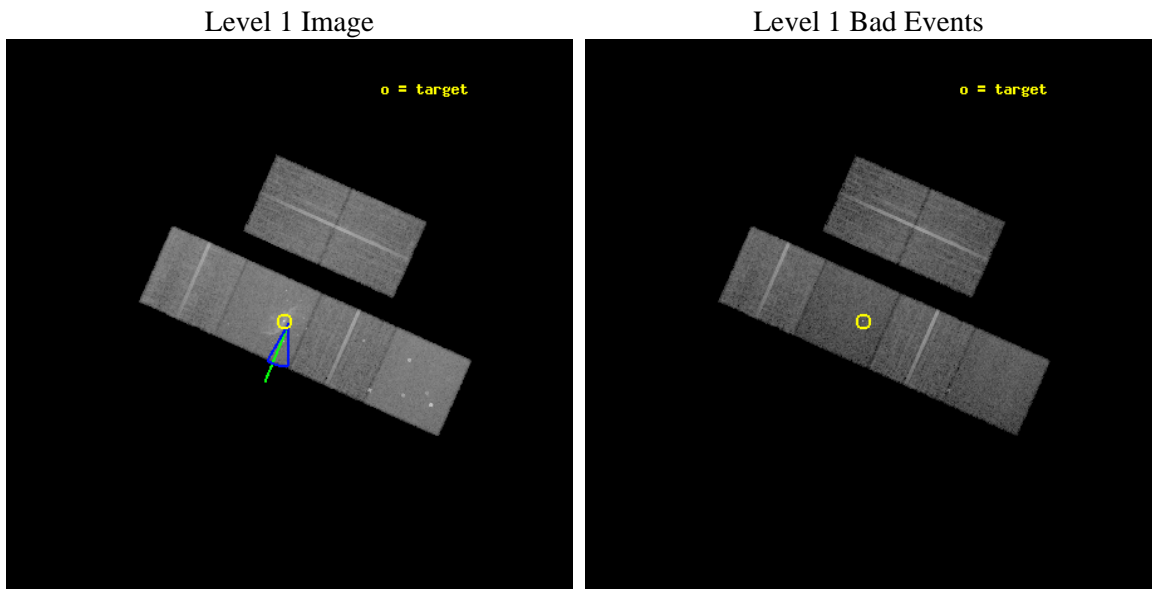
seq_num	700022	Sequence number
obs_id	350	Observation id
title	STUDIES OF RADIO JETS AND THE NARROW LINE REGIONS	Proposal title
observer	Professor Andrew Wilson	Principal investigator
object	NGC 4258	Source name
dtycycle	0	
cycle	P	events from which exps? Prim/Second/Both
ra_targ	184.740833	Observer's specified target RA [deg]
dec_targ	47.303333	Observer's specified target Dec [deg]
ra_nom	184.72644513909	Nominal RA [deg]
dec_nom	47.300987450581	Nominal Dec [deg]
roll_nom	203.99260813746	Nominal Roll [deg]
revision	4	Processing version of data
ontime	14220.800013229	Sum of GTIs [s]
livetime	14040.727680724	Livetime [s]
ontime2	14220.800013229	Sum of GTIs [s]
ontime3	14220.800013229	Sum of GTIs [s]
ontime5	14220.800013229	Sum of GTIs [s]
ontime6	14220.800013229	Sum of GTIs [s]
ontime7	14220.800013229	Sum of GTIs [s]
ontime8	14217.559053004	Sum of GTIs [s]
l2events	164897	Number of level 2 events



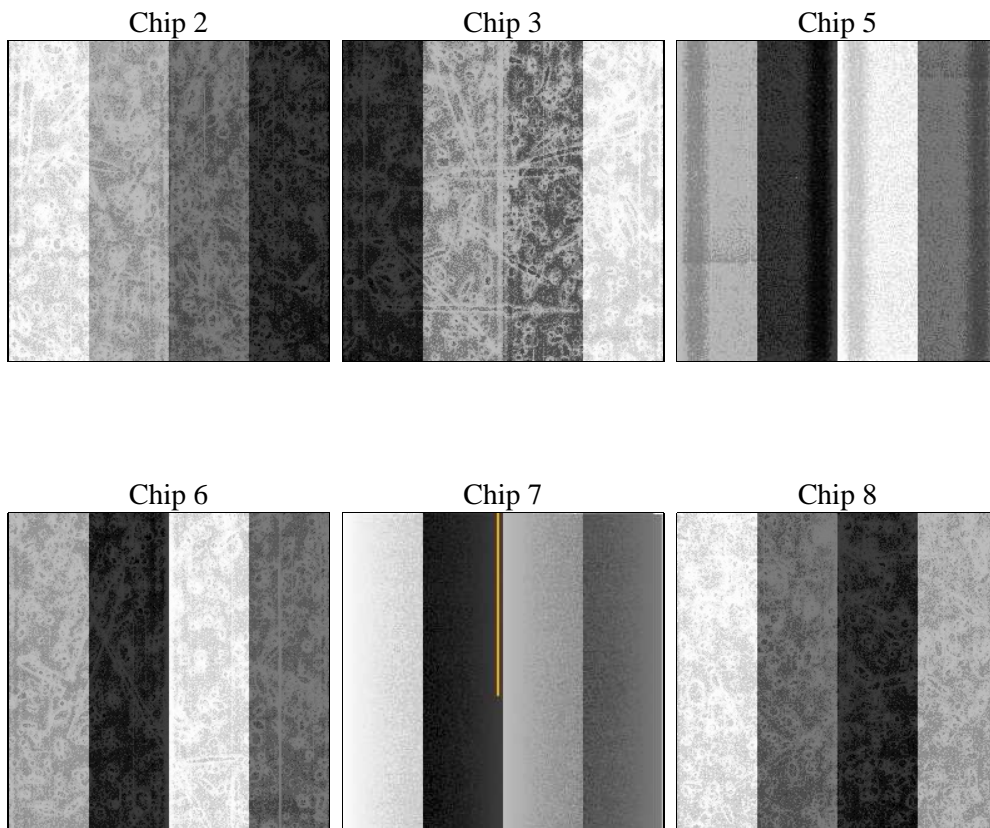
2 OBI

2.1 OBI

2.1.1 Images



2.1.2 Bias



2.1.3 Parameters

obi_num	0	Obi number	sched_exp_time	14500.000000	[s] Scheduled observation exposure time
ascdsver	8.4.5	Processing system revision	ontime	14220.800013229	Sum of GTIs [s]
caldsver	4.5.1.1	 	ontime2	14220.800013229	Sum of GTIs [s]
date	2012-08-25T15:52:42	Date and time of file creation	ontime3	14220.800013229	Sum of GTIs [s]
revision	4	Processing version of data	ontime5	14220.800013229	Sum of GTIs [s]
			ontime6	14220.800013229	Sum of GTIs [s]
			ontime7	14220.800013229	Sum of GTIs [s]
			ontime8	14217.559053004	Sum of GTIs [s]
			l1events	725370	Number of level 1 events

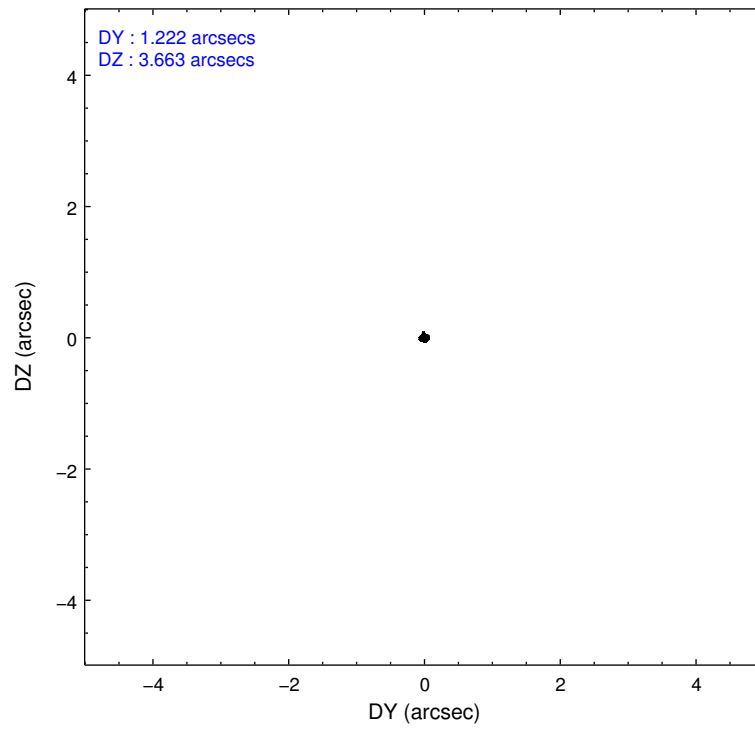
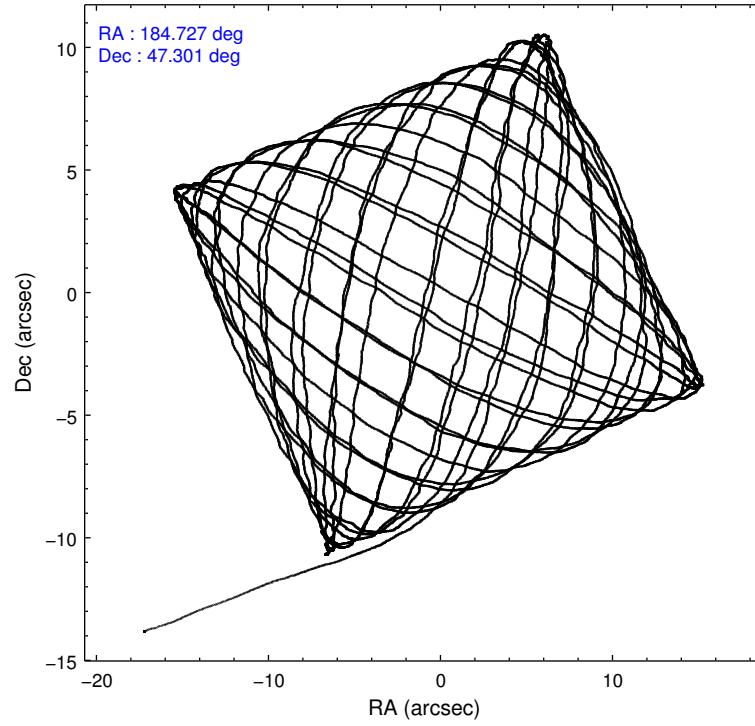
2.1.4 Events

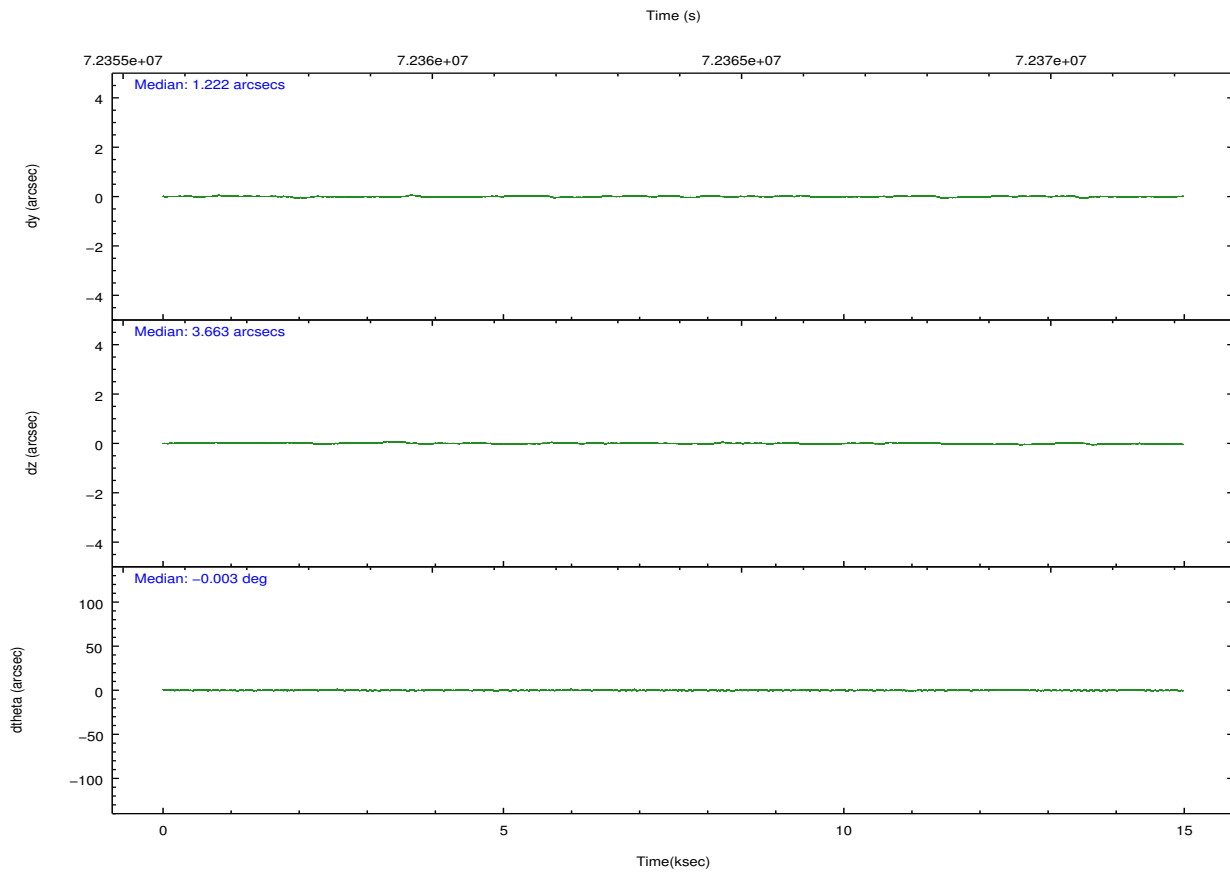
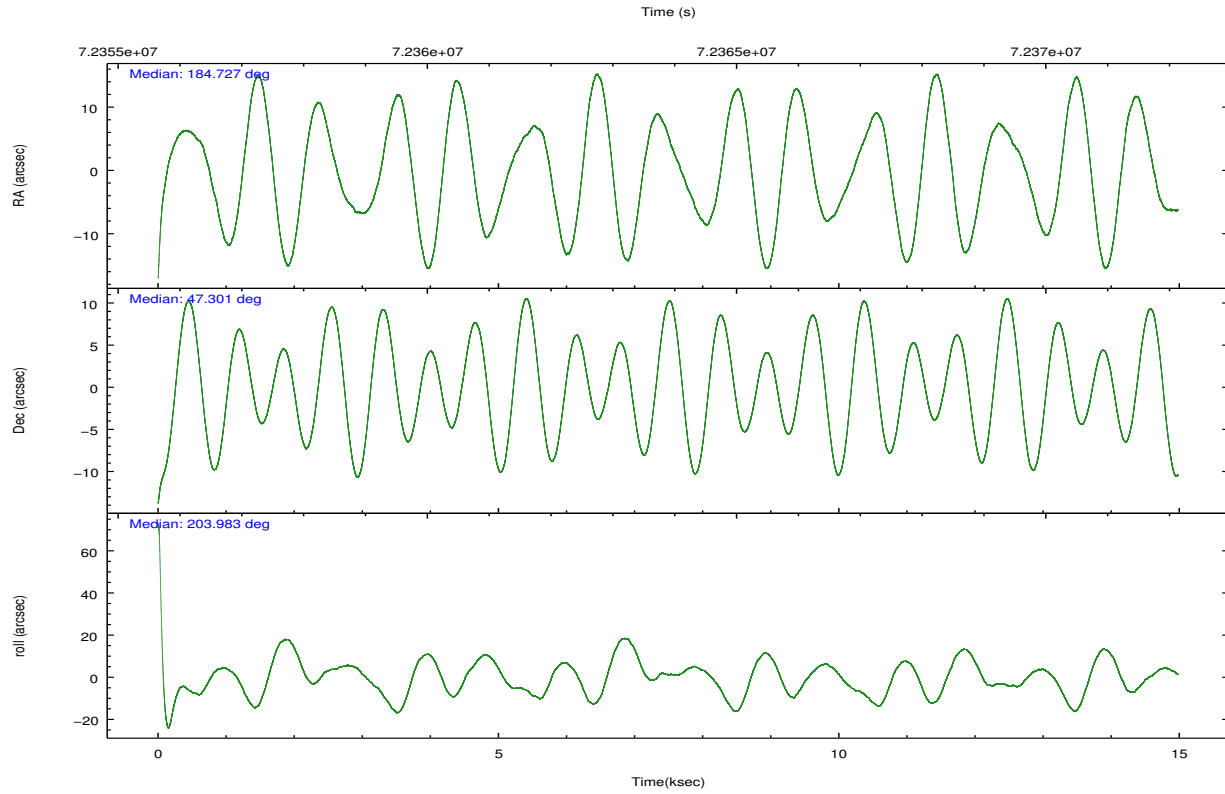
	ccd 2	ccd 3	ccd 5	ccd 6	ccd 7	ccd 8		ccd 2	ccd 3	ccd 5	ccd 6	ccd 7	ccd 8
level 1 events	108621	102453	135501	105248	140365	133182	grade 0 events	5052	4473	9641	4901	11673	7720
rejected events	97204	92038	70486	93852	70530	109090		4%	4%	7%	4%	8%	5%
rejected %	89%	89%	52%	89%	50%	81%	grade 1 events	46	54	312	38	182	81
								0%	0%	0%	0%	0%	0%
							grade 2 events	2358	2002	18625	2122	14798	5167
								2%	1%	13%	2%	10%	3%
							grade 3 events	1052	1076	2830	1138	6801	2674
								0%	1%	2%	1%	4%	2%
							grade 4 events	1099	1035	2813	1120	6634	2385
								1%	1%	2%	1%	4%	1%
							grade 5 events	3170	3315	10222	3825	11934	4985
								2%	3%	7%	3%	8%	3%
							grade 6 events	1860	1833	31148	2125	29964	6155
								1%	1%	22%	2%	21%	4%
							grade 7 events	93984	88665	59910	89979	58379	104015
								86%	86%	44%	85%	41%	78%

2.2 Compared Parameters

Parameter	Planned	Actual	Parameter	Planned	Actual
Instrument	ACIS	ACIS	Obspar format version number	7	7
Detector	ACIS-235678	ACIS-235678	Obspar file type	PREDICTED	ACTUAL
Grating	NONE	NONE	Obspar update status	NONE	UPDATED
Data mode	FAINT	FAINT	Number of optional ACIS chips dropped	0	0
Observation mode	POINTING	POINTING	On-chip summing requested	N	N
[deg] Pointing RA	184.750166	184.7264451390874	Subarray requested	NONE	NONE
[deg] Pointing Dec	47.323248	47.30098745058079	Alternating exposures requested	N	N
[deg] Pointing Roll	203.818459	203.9926081374614	[s] Primary exposure time	0.000000	3.2
[deg] Roll angle	195.000000	195.000000			
[deg] Roll tolerance	15.000000	15.000000			
Roll constraint allows 180D rotation	N	N			
[mm] SIM focus pos	-0.684267	-0.6828225247311905			
[mm] SIM defocus	0	0.001444936568705701			
[mm] SIM translation stage pos	-190.132523	-190.1400660498719			
[mm] SIM translation stage offset	0	0.00754346686406393			
[s] Observation start time (MET)	72356880.184000	72355965.527905			
Observation start date	2000-04-17T11:06:56	2000-04-17T10:52:45			
[s] Observation end time (MET)	72371380.184000	72372024.715994			
Observation end date	2000-04-17T15:08:36	2000-04-17T15:20:24			
Read mode	TIMED	TIMED			

2.3 Aspect



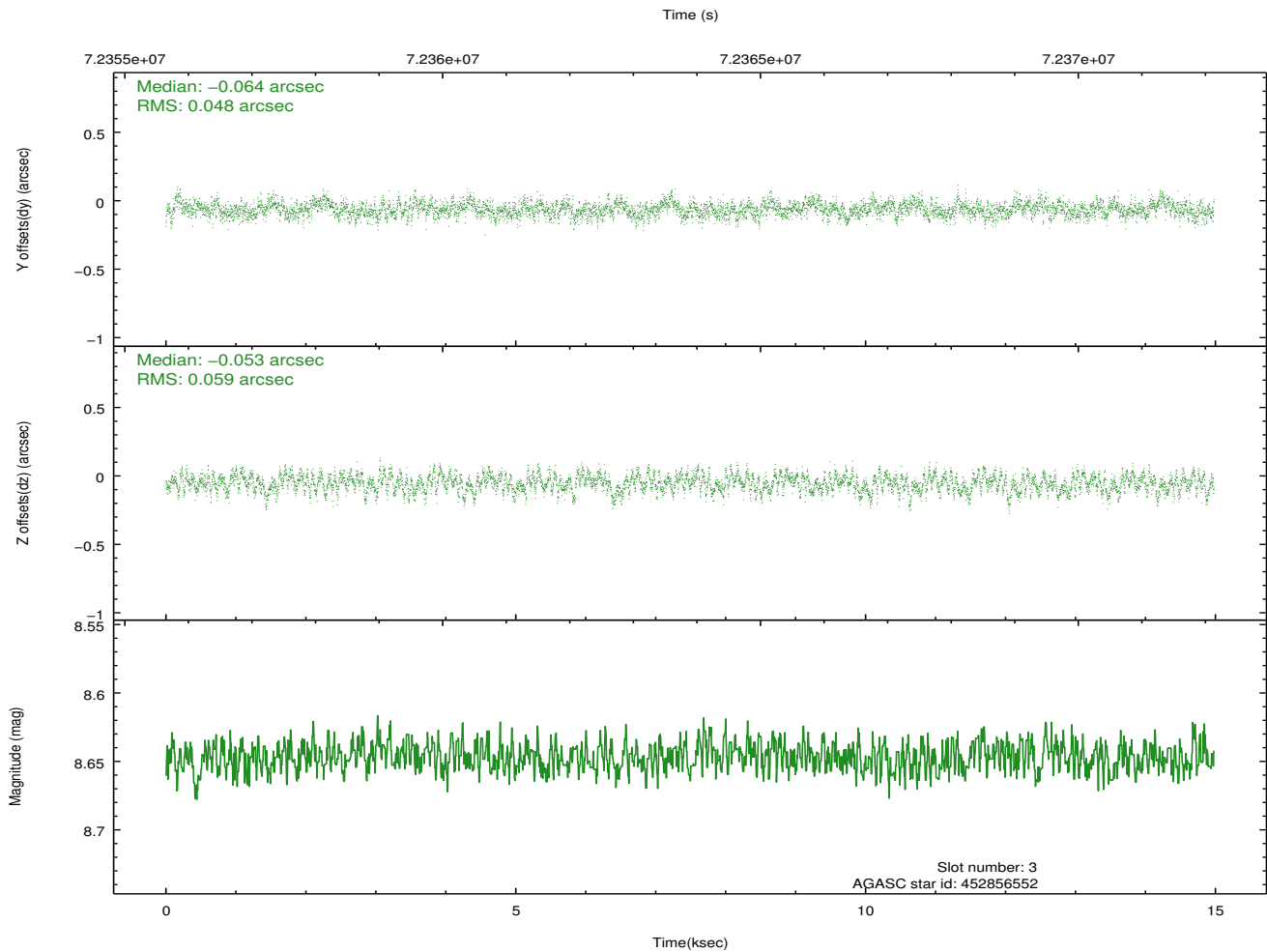
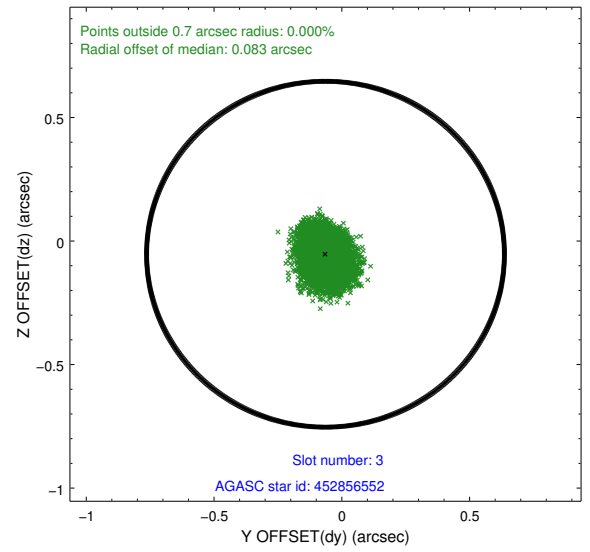
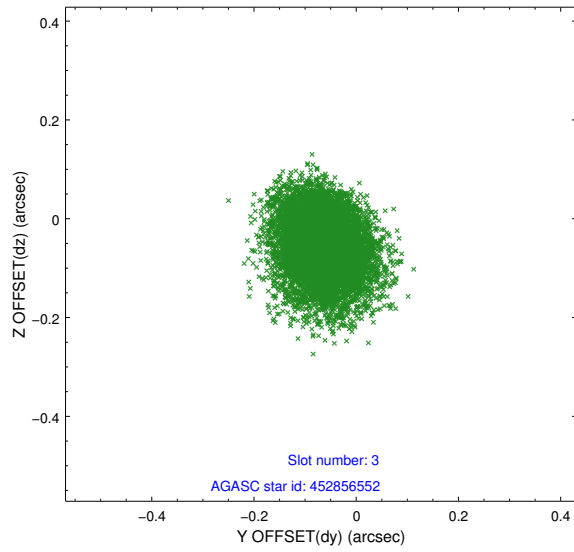


Slot Statistics

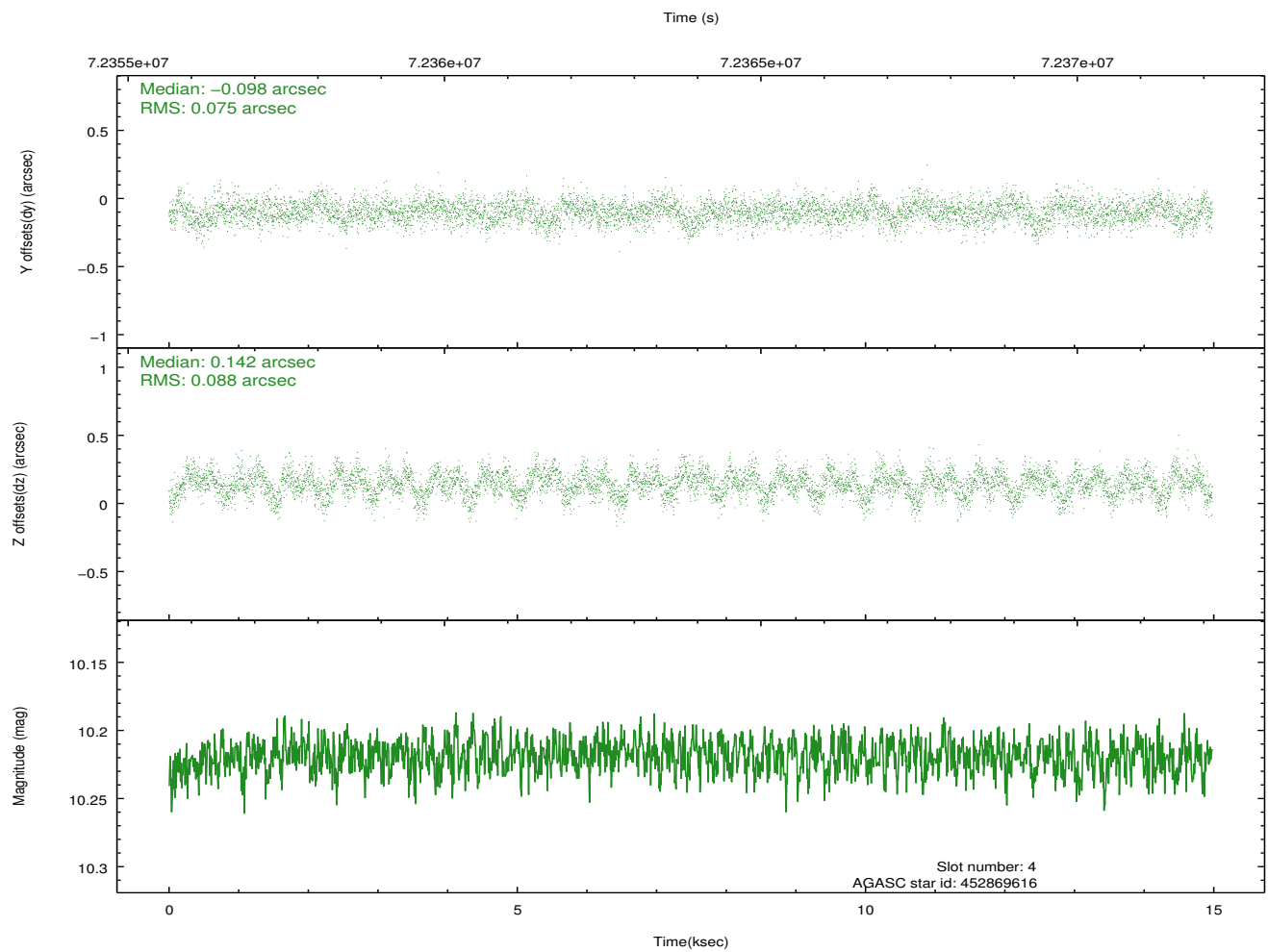
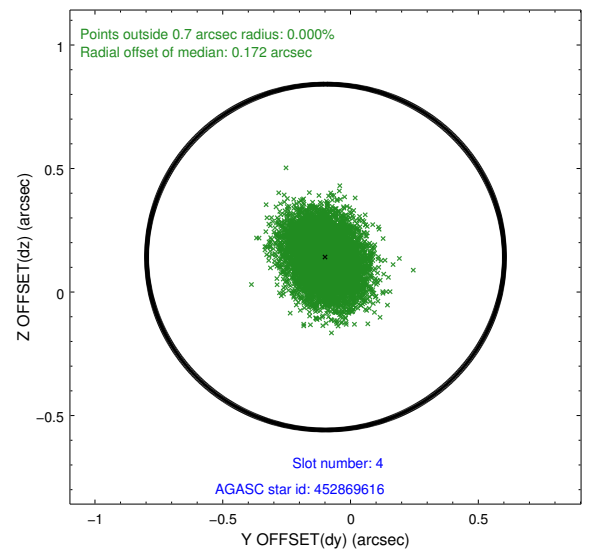
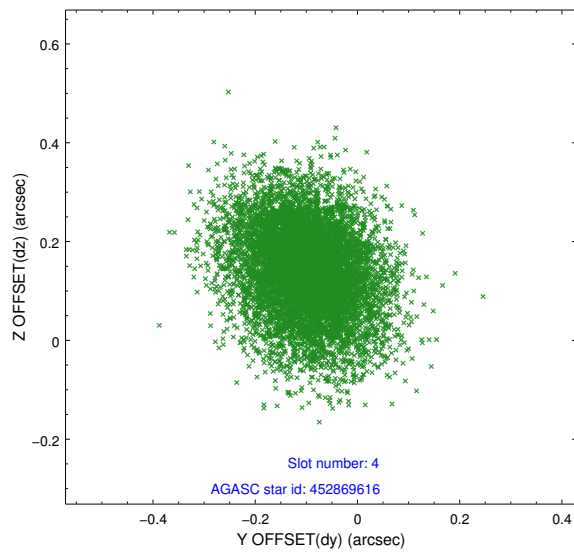
slot	status	id	mag	n_pts	med_dy	med_dz	dr1	dr2	ra	dec	mean_y	mean_z
0	FID	ACIS-S-2	7.11	3653	-0.007	-0.019	0.007	0.011	0.000000	0.000000	-753.86	-1724.73
1	FID	ACIS-S-4	7.21	3654	-0.000	0.009	0.005	0.010	0.000000	0.000000	2159.33	183.39
2	FID	ACIS-S-5	7.24	3654	-0.023	0.019	0.006	0.011	0.000000	0.000000	-1806.29	177.52
3	GUIDE	452856552	8.65	7306	-0.064	-0.053	0.082	0.131	184.964211	47.802867	-1170.23	-1371.38
4	GUIDE	452869616	10.22	7302	-0.098	0.142	0.123	0.201	185.280458	47.514212	-1458.52	-112.43
5	GUIDE	452855440	10.21	7298	0.082	-0.010	0.171	0.292	184.000491	47.562100	1316.07	-1529.83
6	GUIDE	452861136	10.20	7299	0.076	-0.011	0.117	0.193	184.181006	47.606547	851.10	-1495.51
7	GUIDE	452870224	10.42	7303	0.014	-0.059	0.165	0.266	185.579132	46.829426	-1153.95	2440.63

2.4 Star Slots

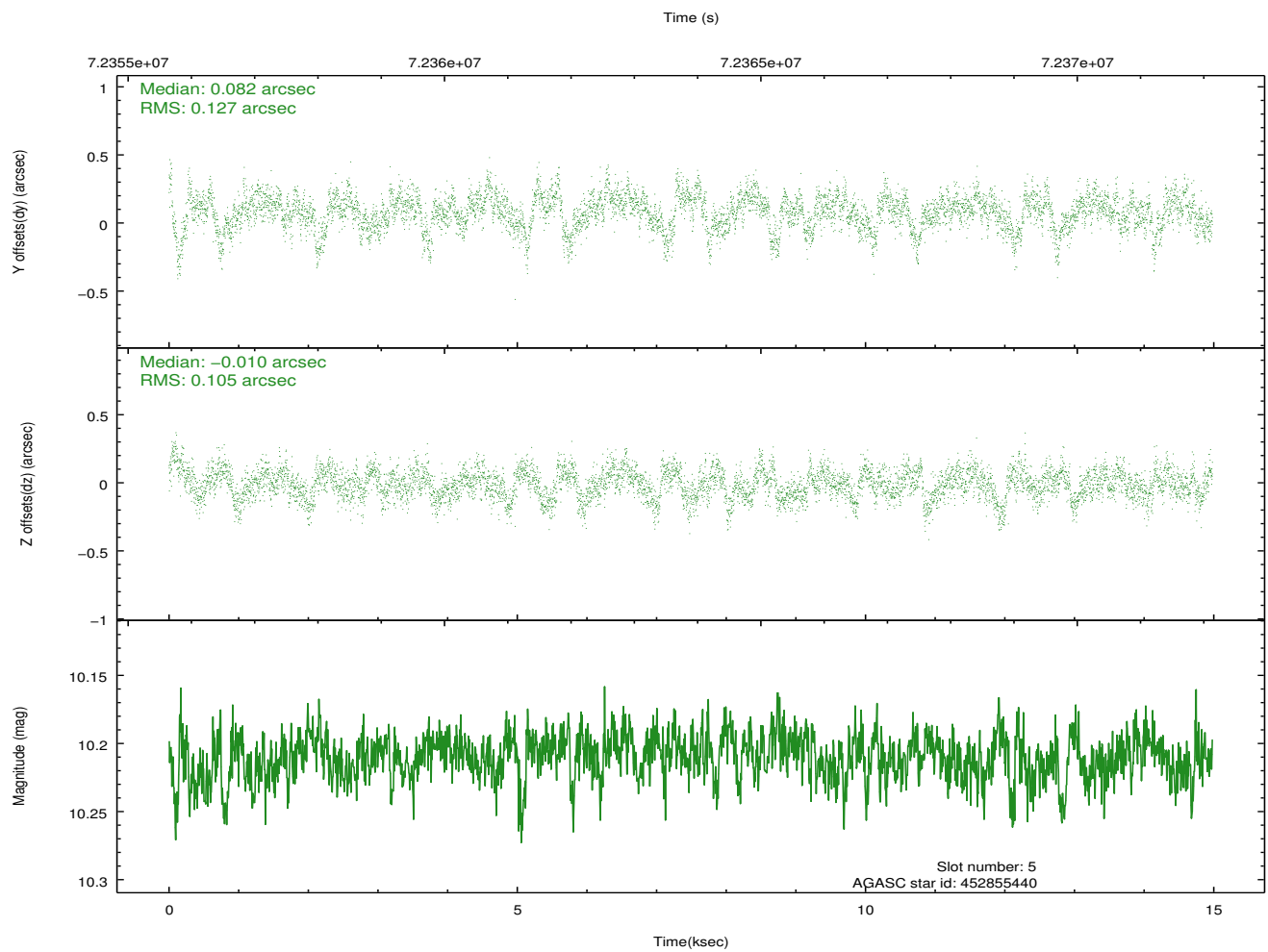
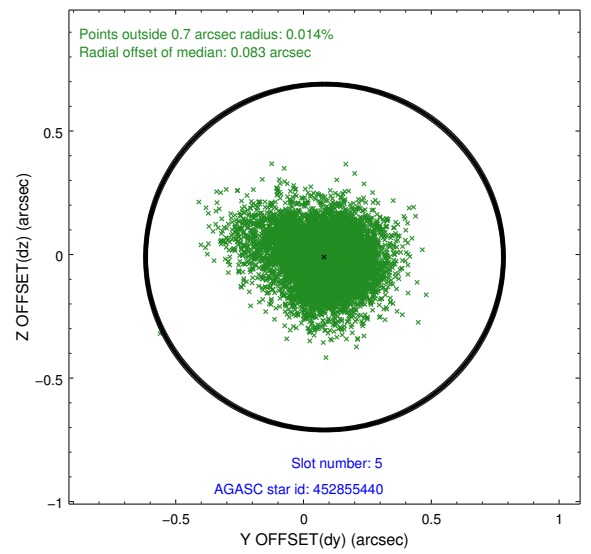
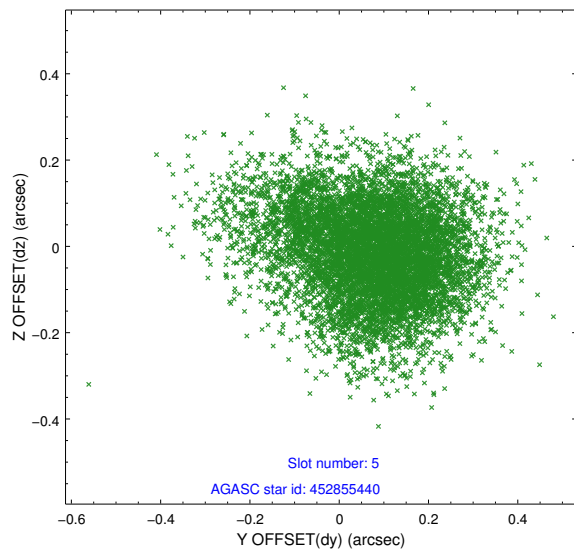
2.4.1 Slot 3



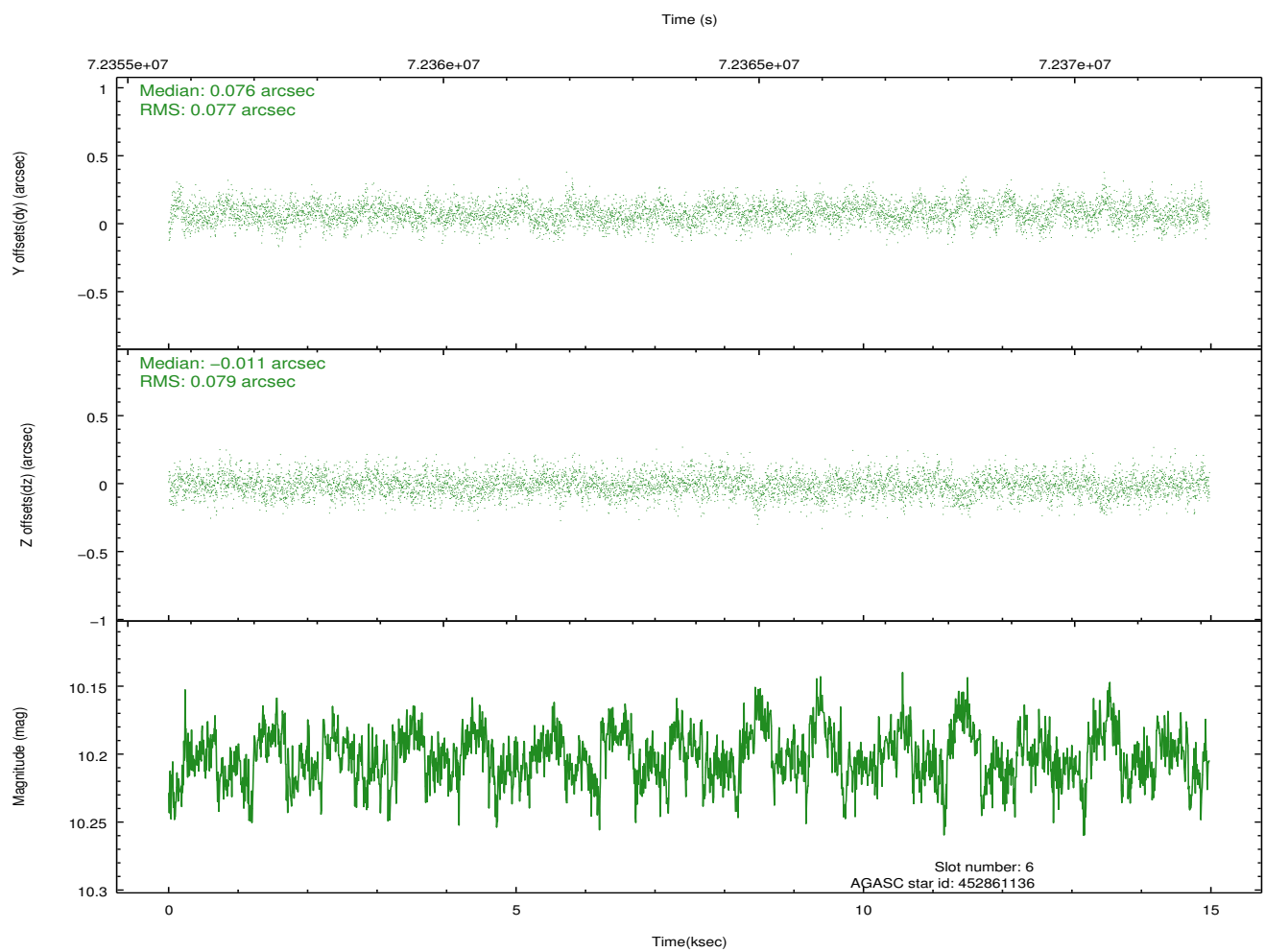
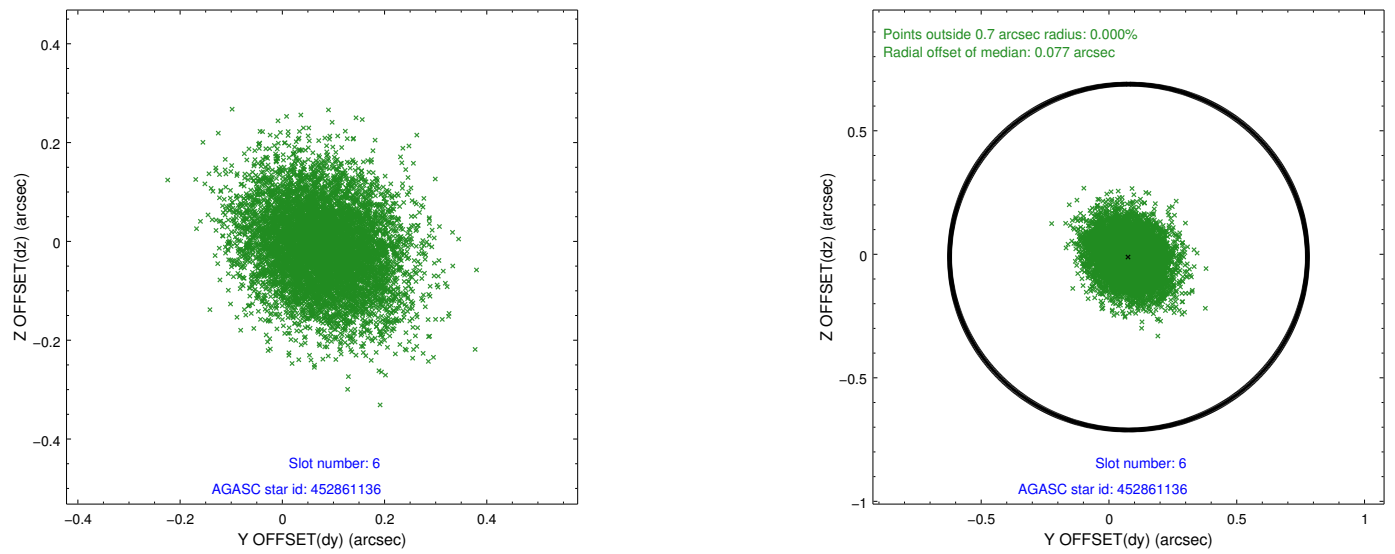
2.4.2 Slot 4



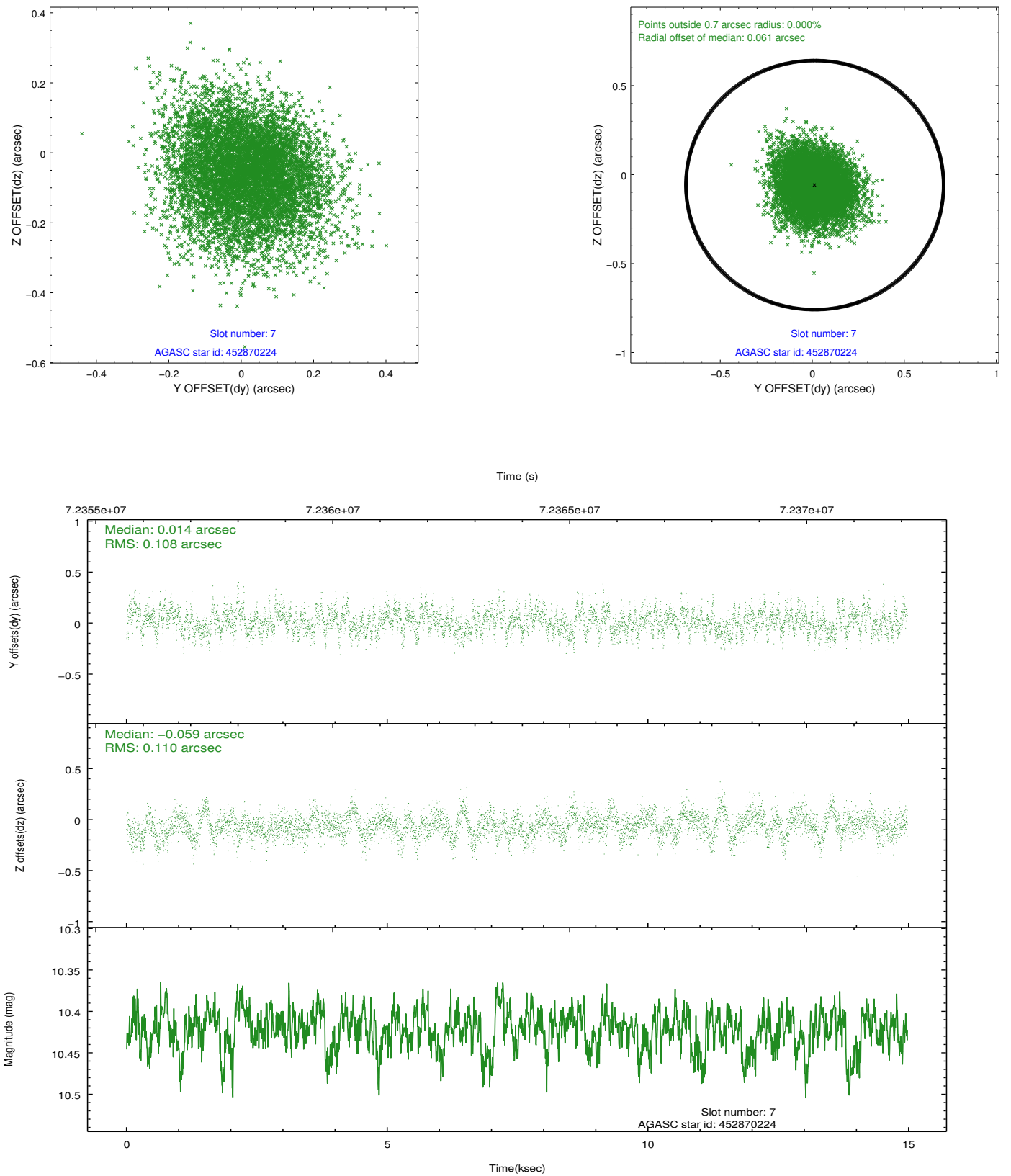
2.4.3 Slot 5



2.4.4 Slot 6

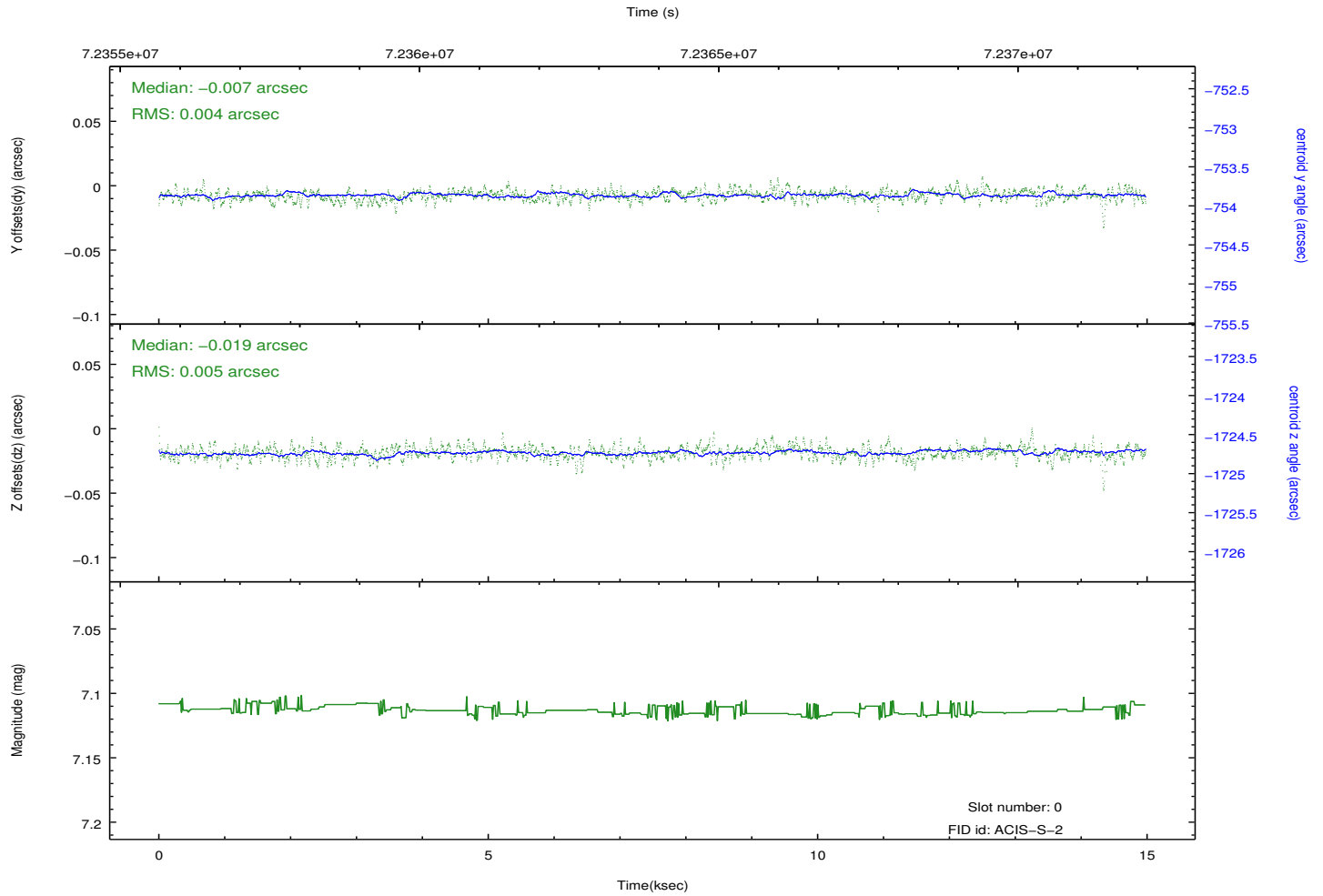
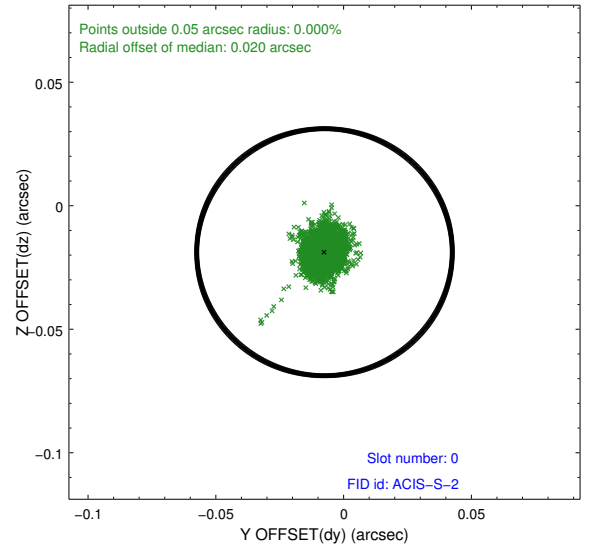
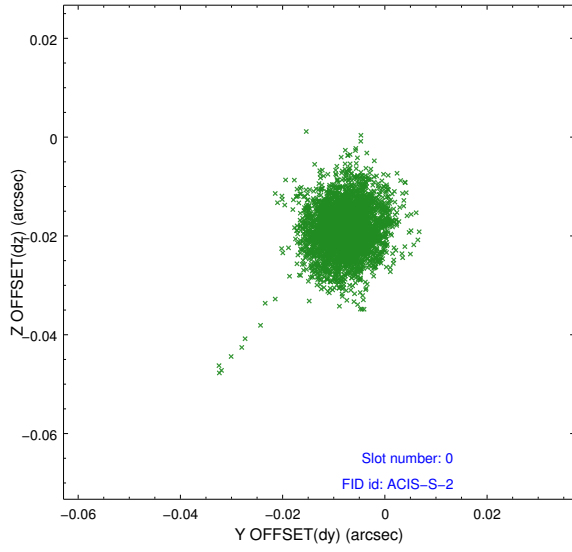


2.4.5 Slot 7

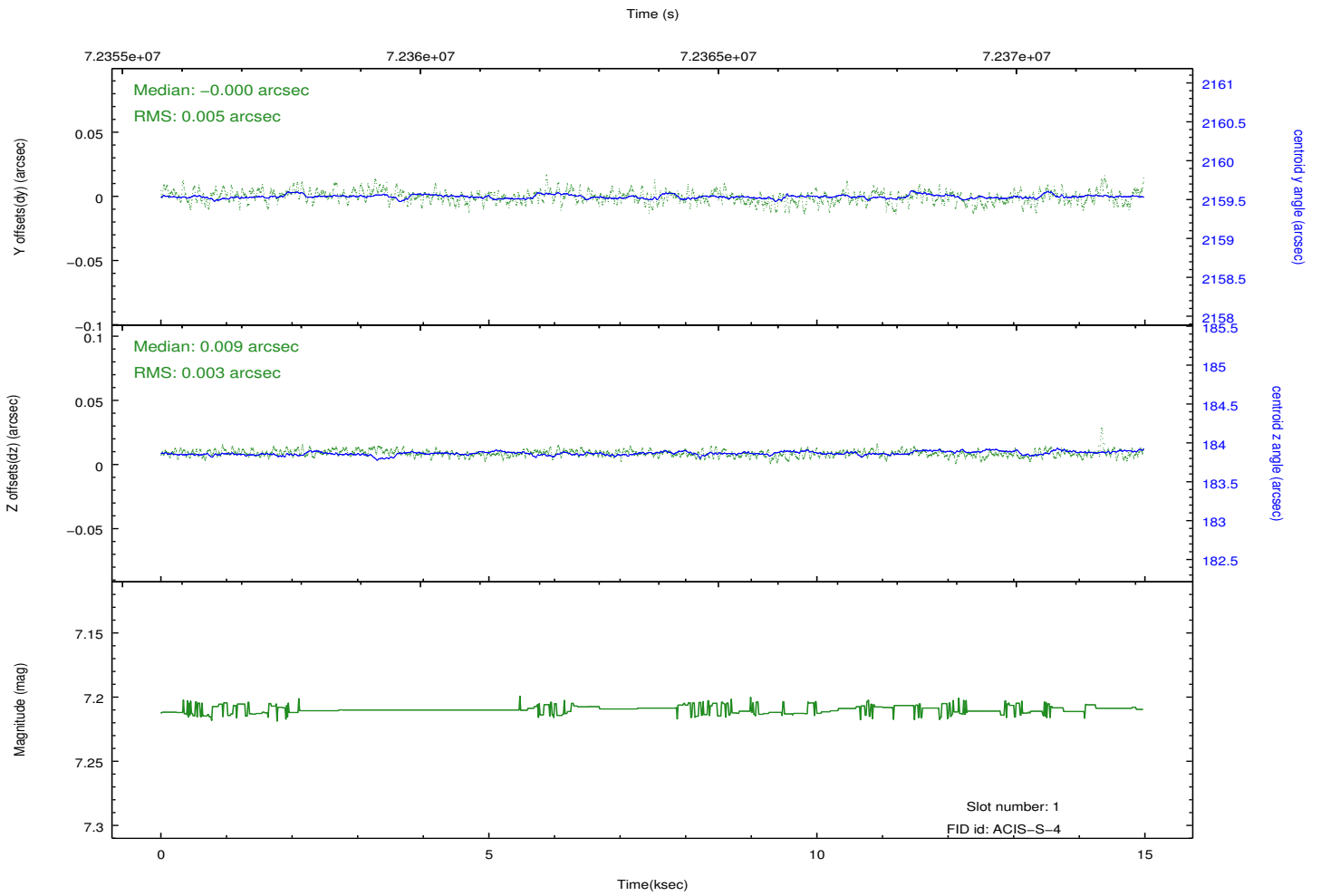
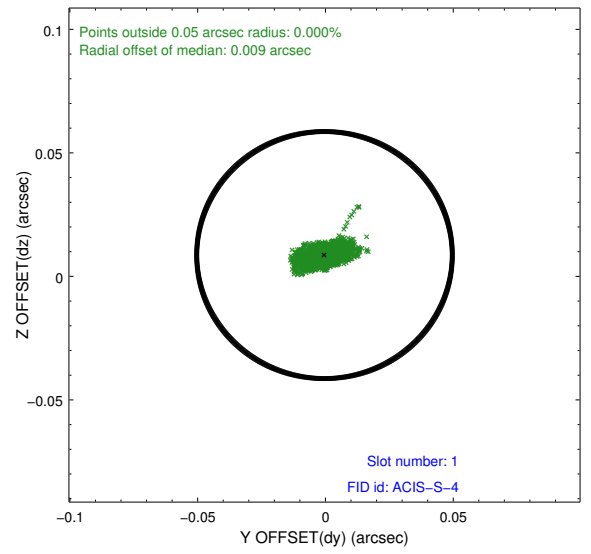
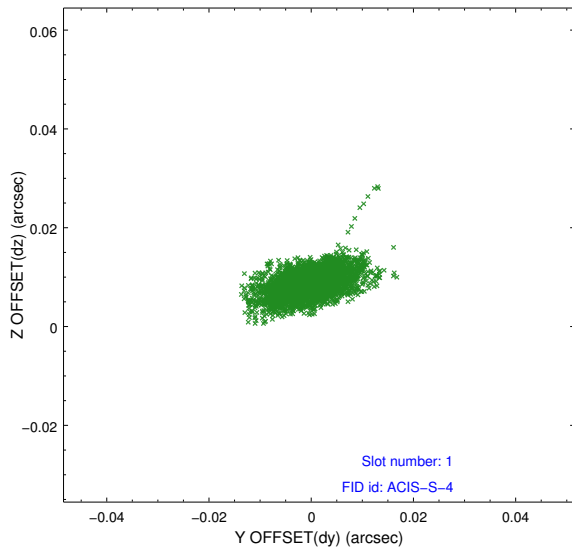


2.5 FID Slots

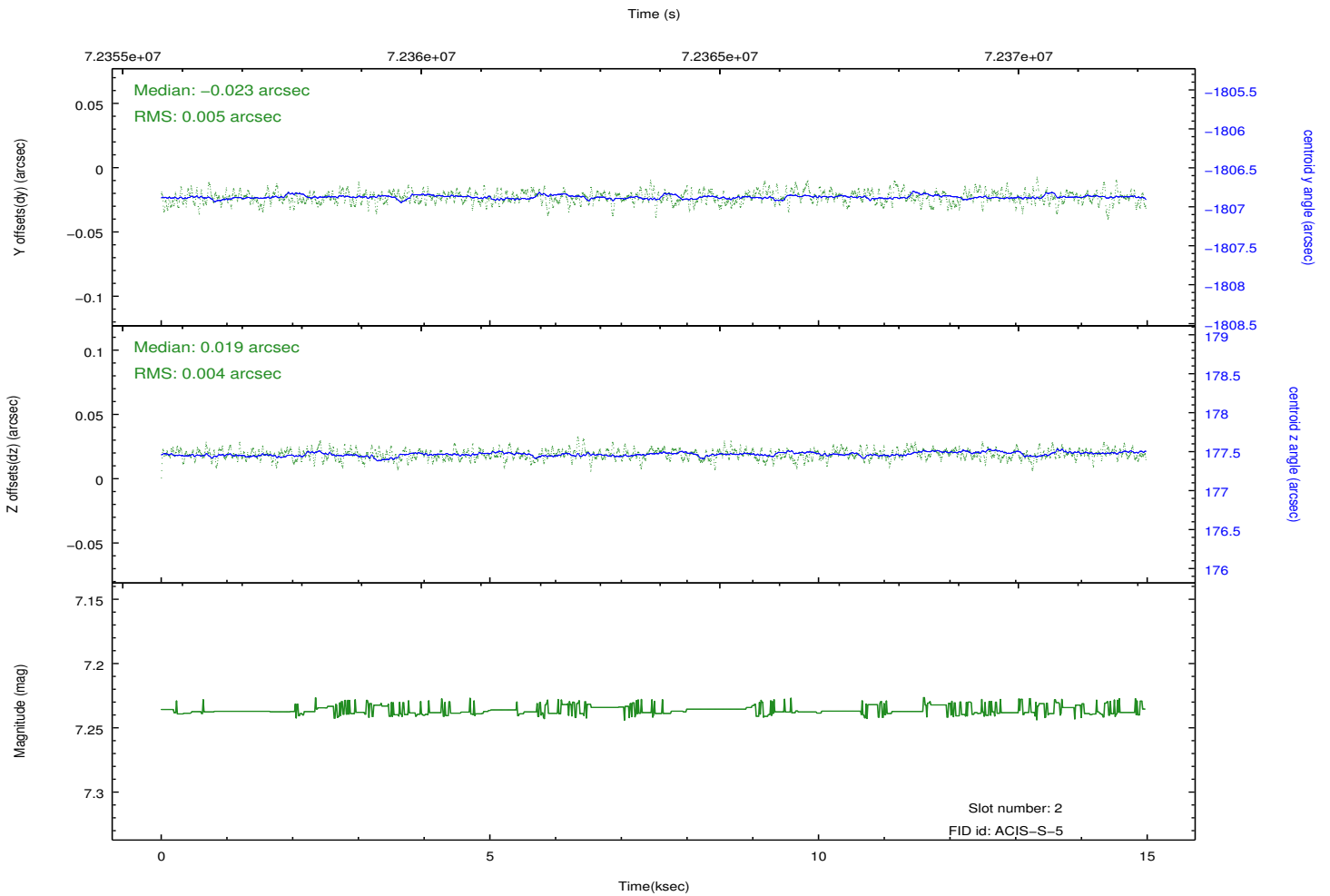
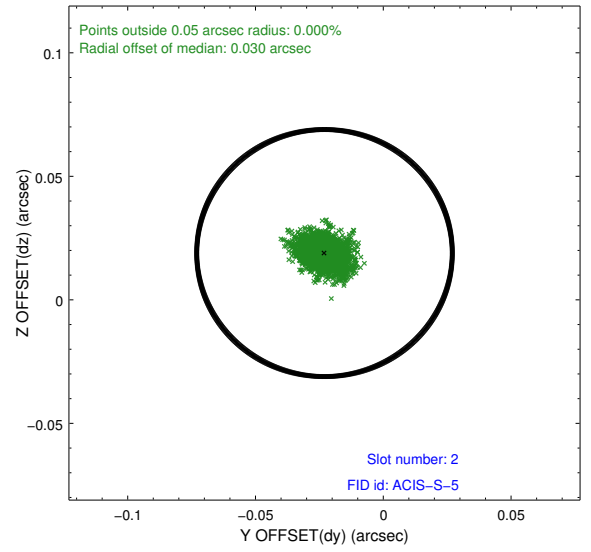
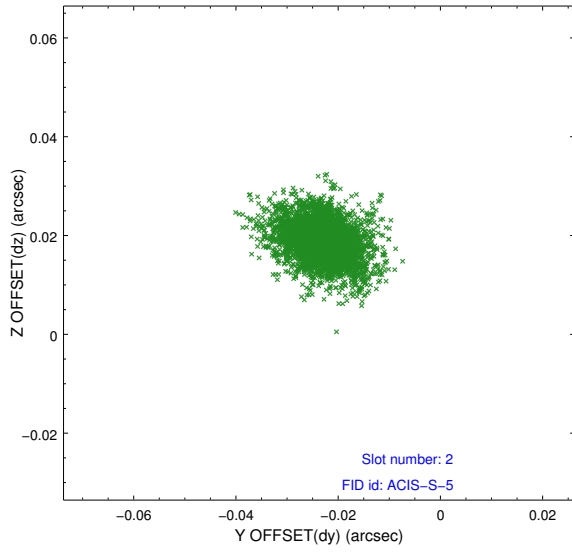
2.5.1 Slot 0



2.5.2 Slot 1



2.5.3 Slot 2



A Summary

A.1 Status

V&V Scientist	Jen Lauer
V&V Date (YYYY-MM-DD)	2012.08.28
V&V Edition	1
V&V Disposition and Status	OK
V&V Charge Time	14.224

A.2 Comments