

V&V Reference Report

L2 ASCDS Version : 8.4.5

Observation 3510 - L2 Version 3
Chandra X-Ray Center

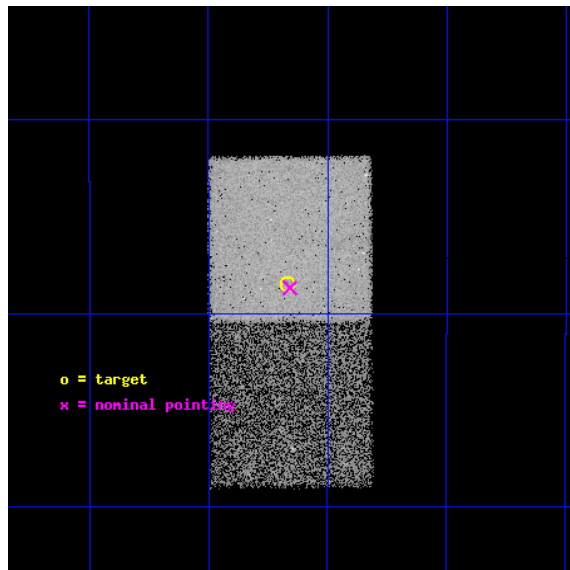
L2 Processing Date : Nov 4 2012

Contents

1	Front	2
2	OBI	3
2.1	OBI	3
2.1.1	Images	3
2.1.2	Bias	3
2.1.3	Parameters	4
2.1.4	Events	4
2.2	Compared Parameters	5
2.3	Aspect	6
2.4	Star Slots	9
2.4.1	Slot 3	9
2.4.2	Slot 4	10
2.4.3	Slot 5	11
2.4.4	Slot 6	12
2.4.5	Slot 7	13
2.5	FID Slots	14
2.5.1	Slot 0	14
2.5.2	Slot 1	15
2.5.3	Slot 2	16
A	Summary	17
A.1	Status	17
A.2	Comments	17

1 Front

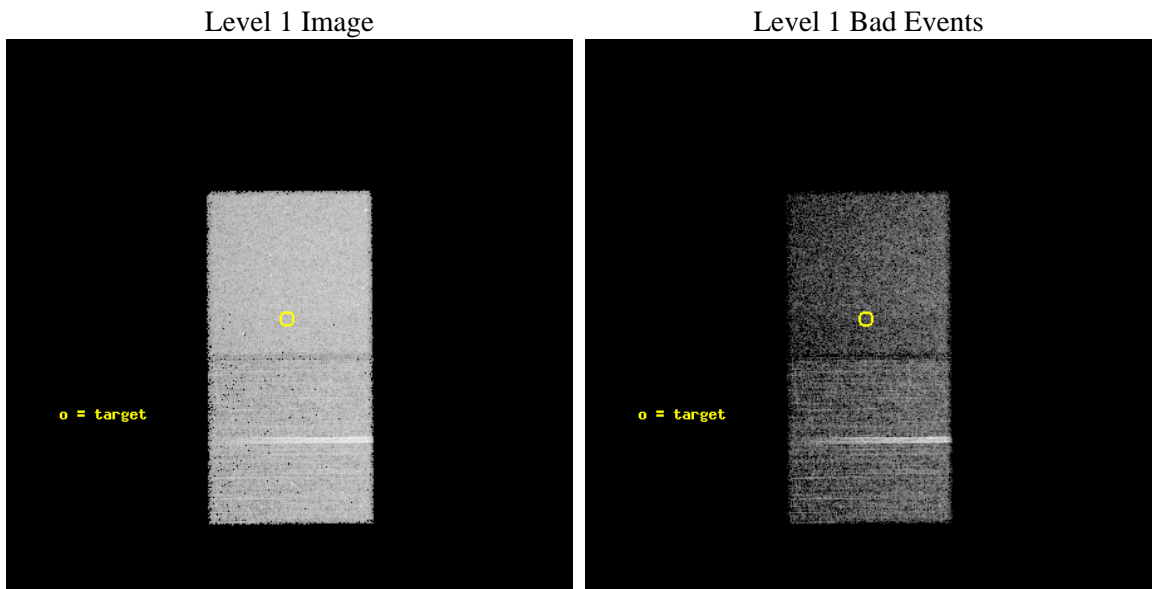
seq_num	400263	Sequence number
obs_id	3510	Observation id
title	NEUTRON STARS IN QUIESCENCE	Proposal title
observer	Dr. Stephen Murray	Principal investigator
object	4U1755-33	Source name
dtcycle	0	
cycle	P	events from which exps? Prim/Second/Both
ra_targ	269.666667	Observer's specified target RA [deg]
dec_targ	-33.8075	Observer's specified target Dec [deg]
ra_nom	269.66464475318	Nominal RA [deg]
dec_nom	-33.811522232721	Nominal Dec [deg]
roll_nom	269.61430205899	Nominal Roll [deg]
revision	3	Processing version of data
ontime	22209.0	Sum of GTIs [s]
liveltime	21909.281035435	Livetime [s]
ontime6	22209.0	Sum of GTIs [s]
ontime7	22209.0	Sum of GTIs [s]
l2events	90574	Number of level 2 events



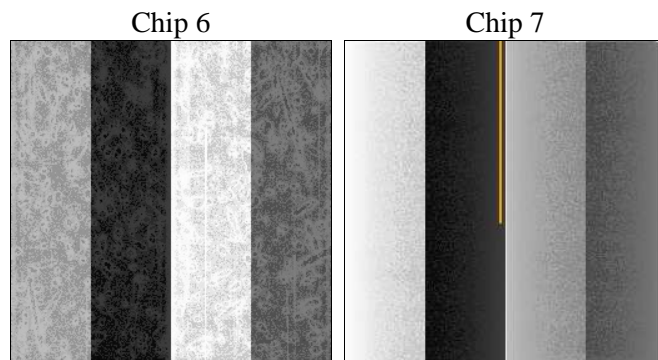
2 OBI

2.1 OBI

2.1.1 Images



2.1.2 Bias



2.1.3 Parameters

obi_num	0	Obi number	sched_exp_time	22000.000000	[s] Scheduled observation exposure time
ascdsver	8.4.5	Processing system revision	ontime	22209.0	Sum of GTIs [s]
caldsver	4.5.2	 	ontime6	22209.0	Sum of GTIs [s]
date	2012-11-04T11:41:50	Date and time of file creation	ontime7	22209.0	Sum of GTIs [s]
revision	3	Processing version of data	l1events	279798	Number of level 1 events

2.1.4 Events

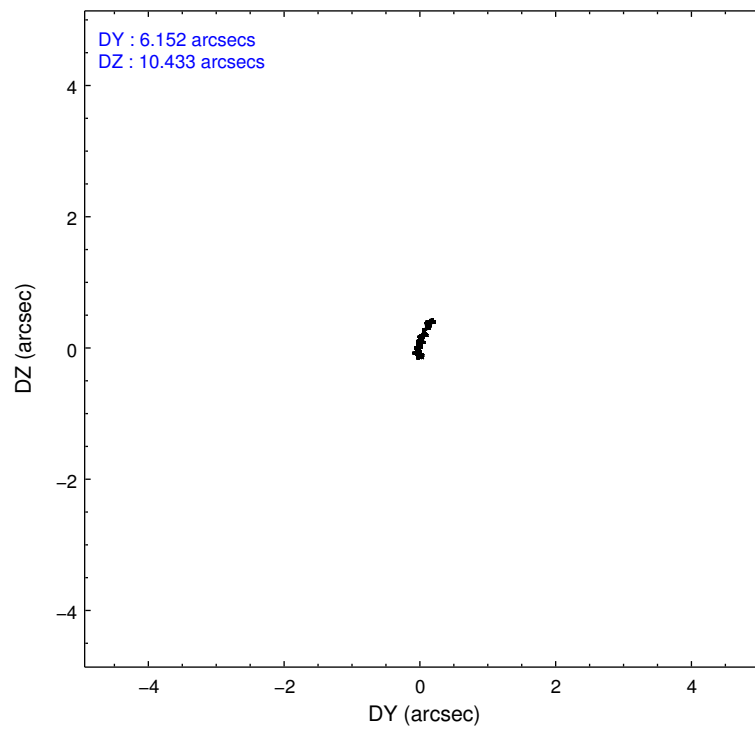
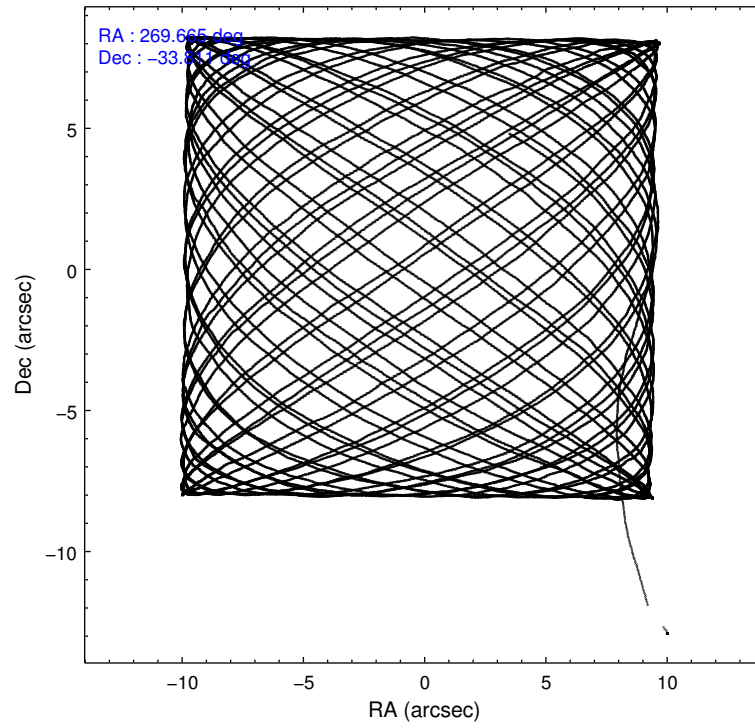
	ccd 6	ccd 7
level 1 events	127956	151842
rejected events	111654	74741
rejected %	87%	49%

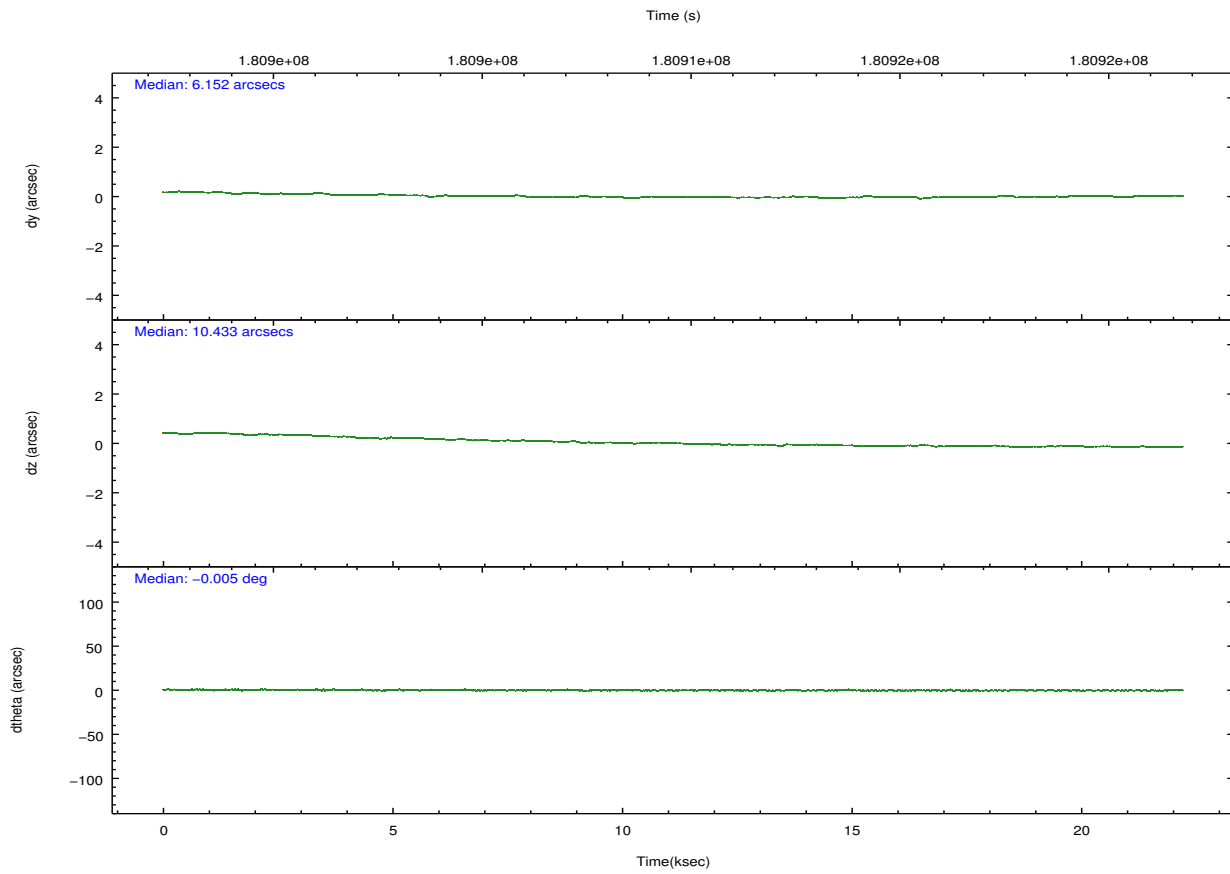
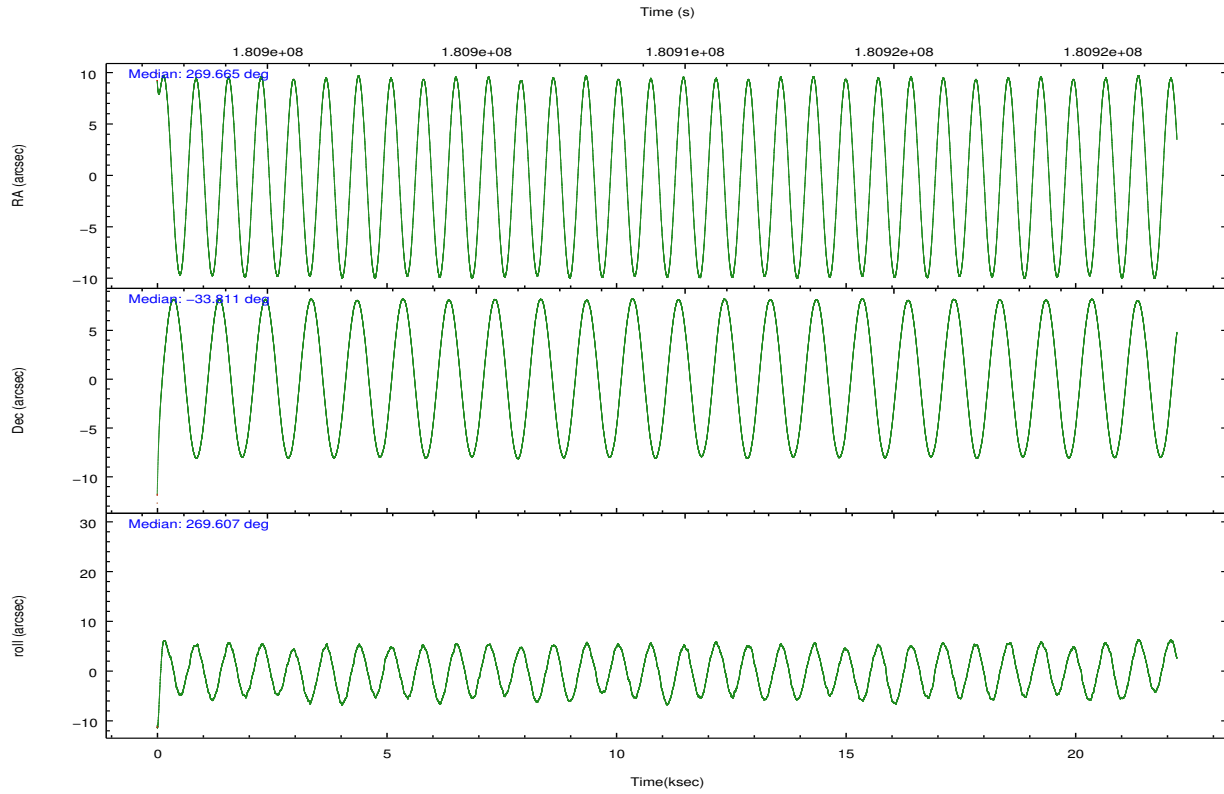
	ccd 6	ccd 7
grade 0 events	7615	8009
	5%	5%
grade 1 events	47	102
	0%	0%
grade 2 events	2973	14768
	2%	9%
grade 3 events	1506	6921
	1%	4%
grade 4 events	1498	7049
	1%	4%
grade 5 events	4910	14508
	3%	9%
grade 6 events	2737	40486
	2%	26%
grade 7 events	106670	59999
	83%	39%

2.2 Compared Parameters

Parameter	Planned	Actual	Parameter	Planned	Actual
Instrument	ACIS	ACIS	Obspar format version number	7	7
Detector	ACIS-67	ACIS-67	Obspar file type	PREDICTED	ACTUAL
Grating	NONE	NONE	Obspar update status	NONE	UPDATED
Data mode	VFAINT	VFAINT	Number of optional ACIS chips dropped	0	0
Observation mode	POINTING	POINTING	On-chip summing requested	N	N
[deg] Pointing RA	269.648039	269.6646447531788	Subarray requested	NONE	NONE
[deg] Pointing Dec	-33.788017	-33.81152223272052	Alternating exposures requested	N	N
[deg] Pointing Roll	269.448452	269.6143020589881	[s] Primary exposure time	0.000000	3
[mm] SIM focus pos	-0.684267	-0.6828225247311905			
[mm] SIM defocus	0	0.001444936568705701			
[mm] SIM translation stage pos	-190.132523	-190.1400660498719			
[mm] SIM translation stage offset	0	0.00754346686406393			
[s] Observation start time (MET)	180898670.184000	180897678.62206			
Observation start date	2003-09-25T17:36:46	2003-09-25T17:21:18			
[s] Observation end time (MET)	180920670.184000	180921110.12307			
Observation end date	2003-09-25T23:43:26	2003-09-25T23:51:50			
Read mode	TIMED	TIMED			

2.3 Aspect





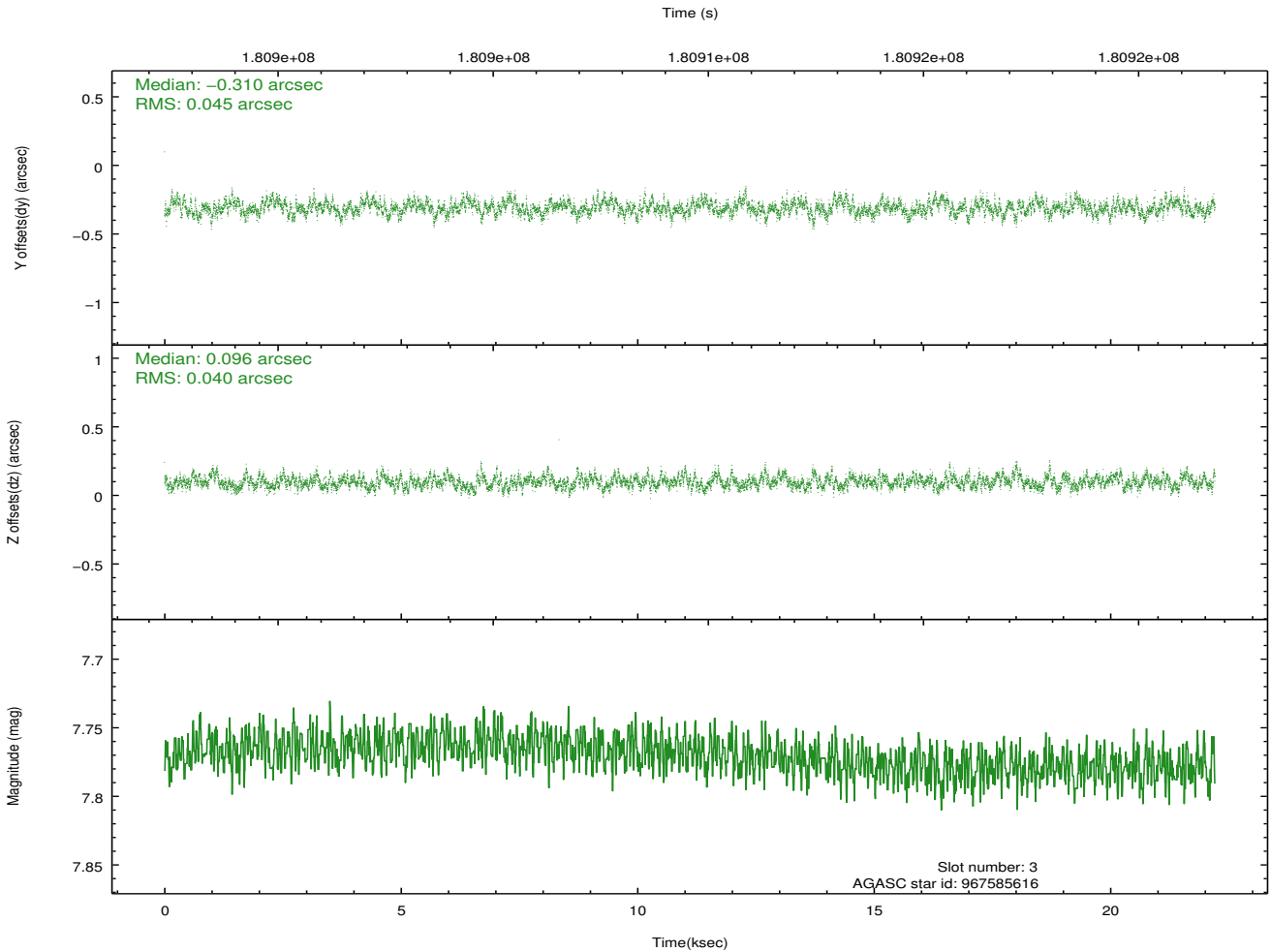
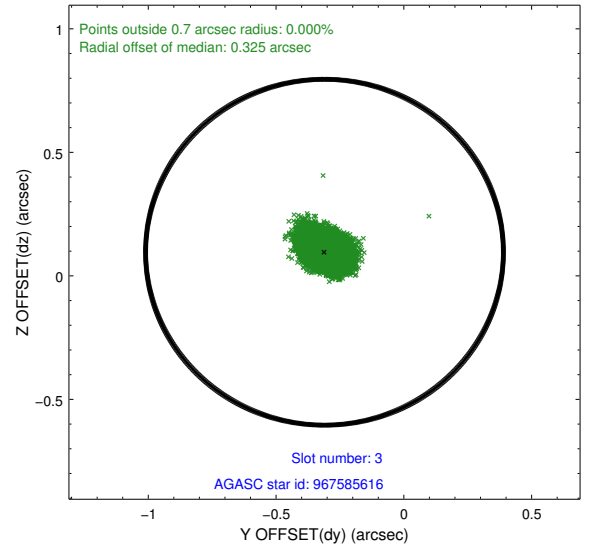
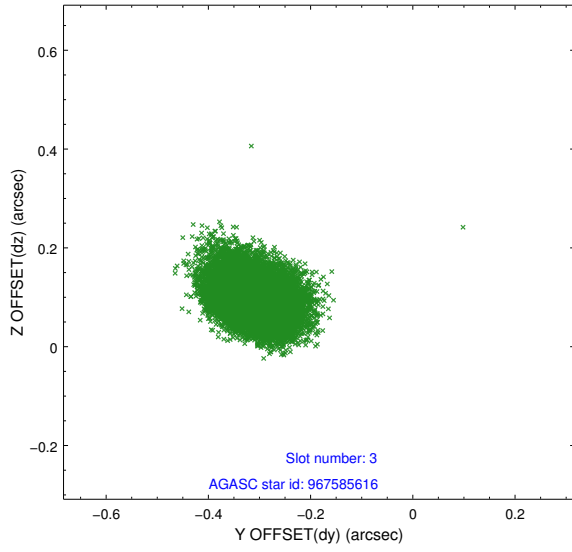
Slot Statistics

slot	status	id	mag	n_pts	med_dy	med_dz	dr1	dr2	ra	dec	mean_y	mean_z
0	FID	ACIS-S-1	7.18	5418	-0.015	-0.036	0.011	0.022	0.000000	0.000000	937.11	-1727.42
1	FID	ACIS-S-4	7.20	5418	0.046	0.037	0.010	0.016	0.000000	0.000000	2154.66	176.66
2	FID	ACIS-S-5	7.23	5418	-0.057	0.012	0.008	0.013	0.000000	0.000000	-1811.61	170.40
3	GUIDE	967585616	7.77	10835	-0.310	0.096	0.064	0.105	269.985133	-33.408329	-1375.12	999.86
4	GUIDE	969291424	9.13	10836	-0.271	0.150	0.102	0.164	270.075194	-33.189856	-2163.36	1266.24
5	GUIDE	969804208	8.87	10833	0.235	0.278	0.065	0.105	270.411541	-34.412083	2233.24	2290.05
6	GUIDE	968106320	9.21	10831	0.259	-0.360	0.120	0.192	268.826628	-34.368465	2123.89	-2420.44
7	GUIDE	968110016	8.40	10830	0.085	-0.170	0.099	0.163	268.984118	-34.286625	1821.12	-1957.51

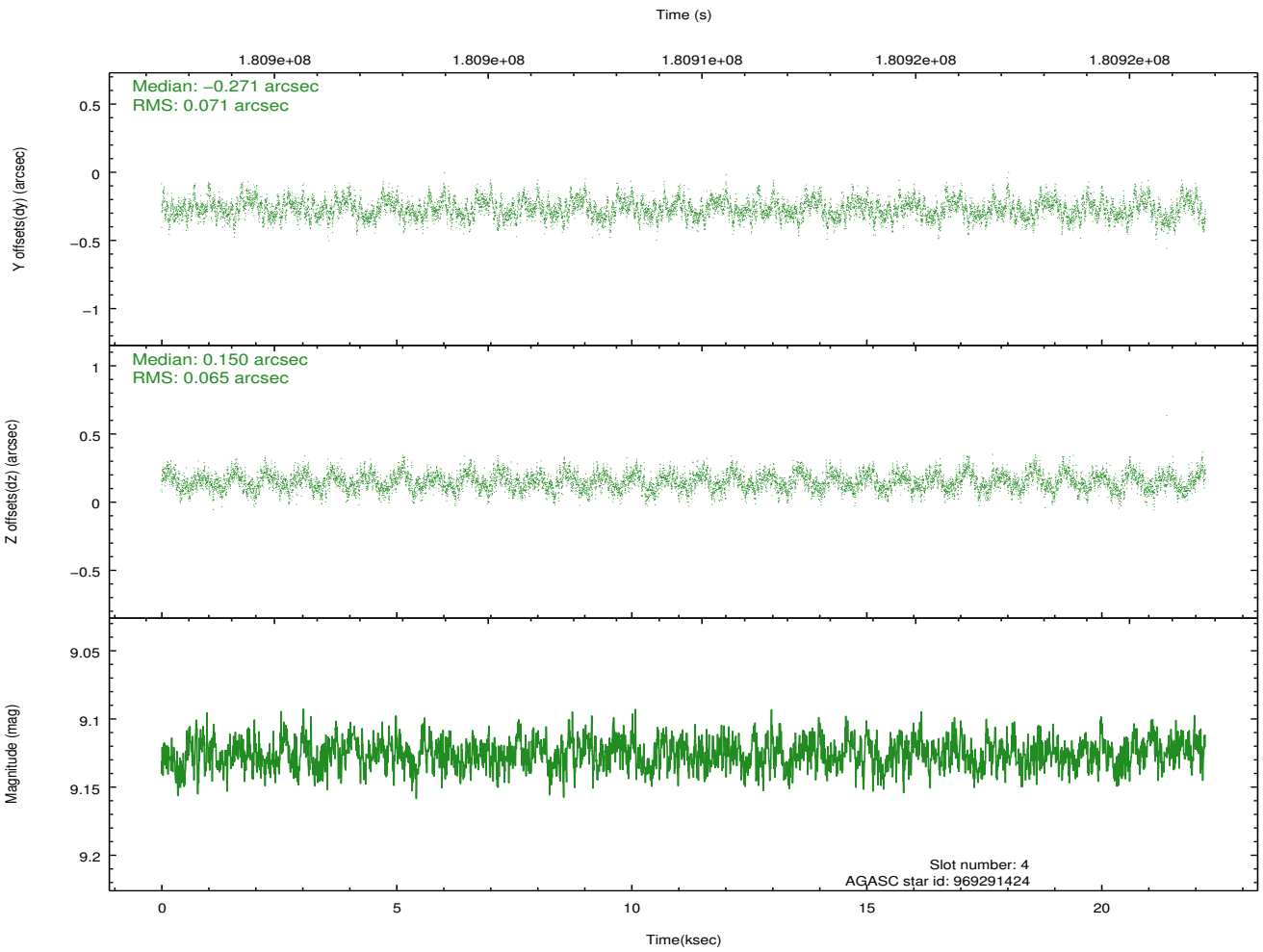
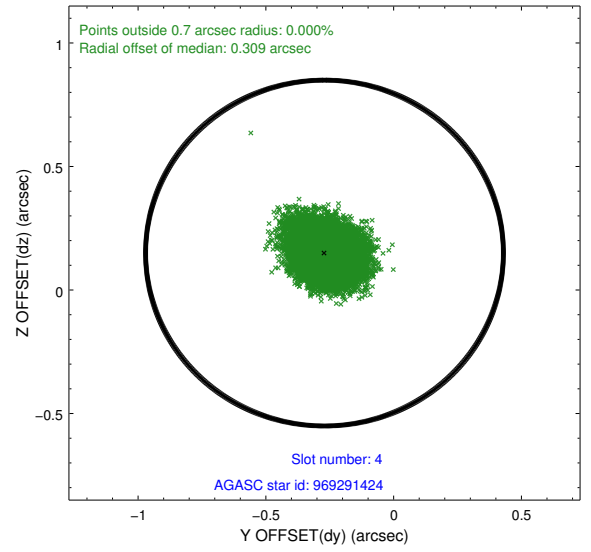
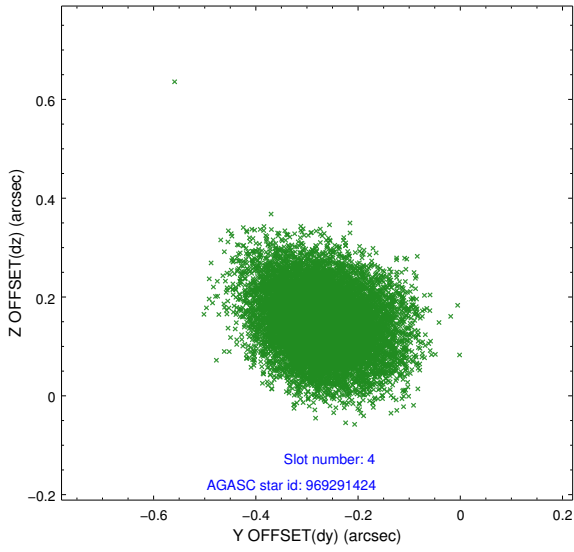
∞

2.4 Star Slots

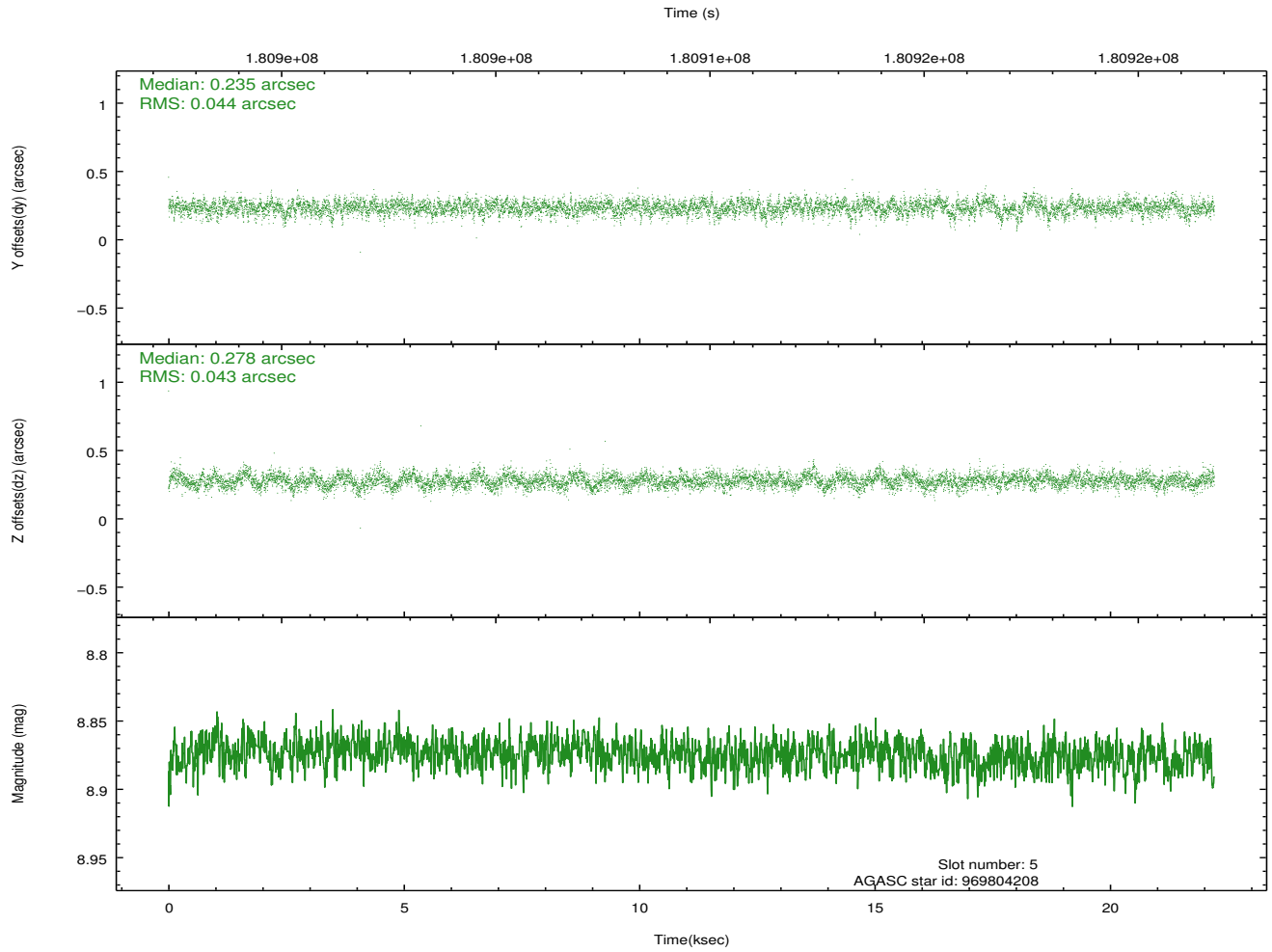
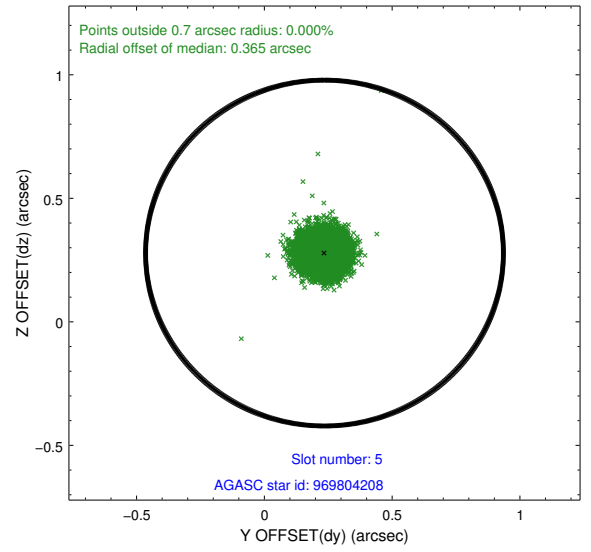
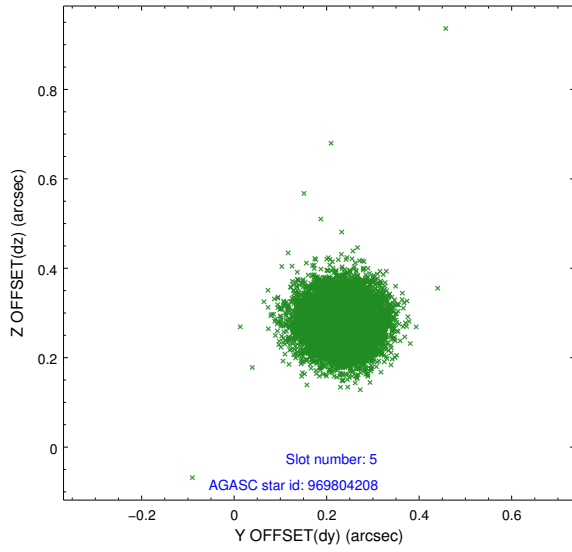
2.4.1 Slot 3



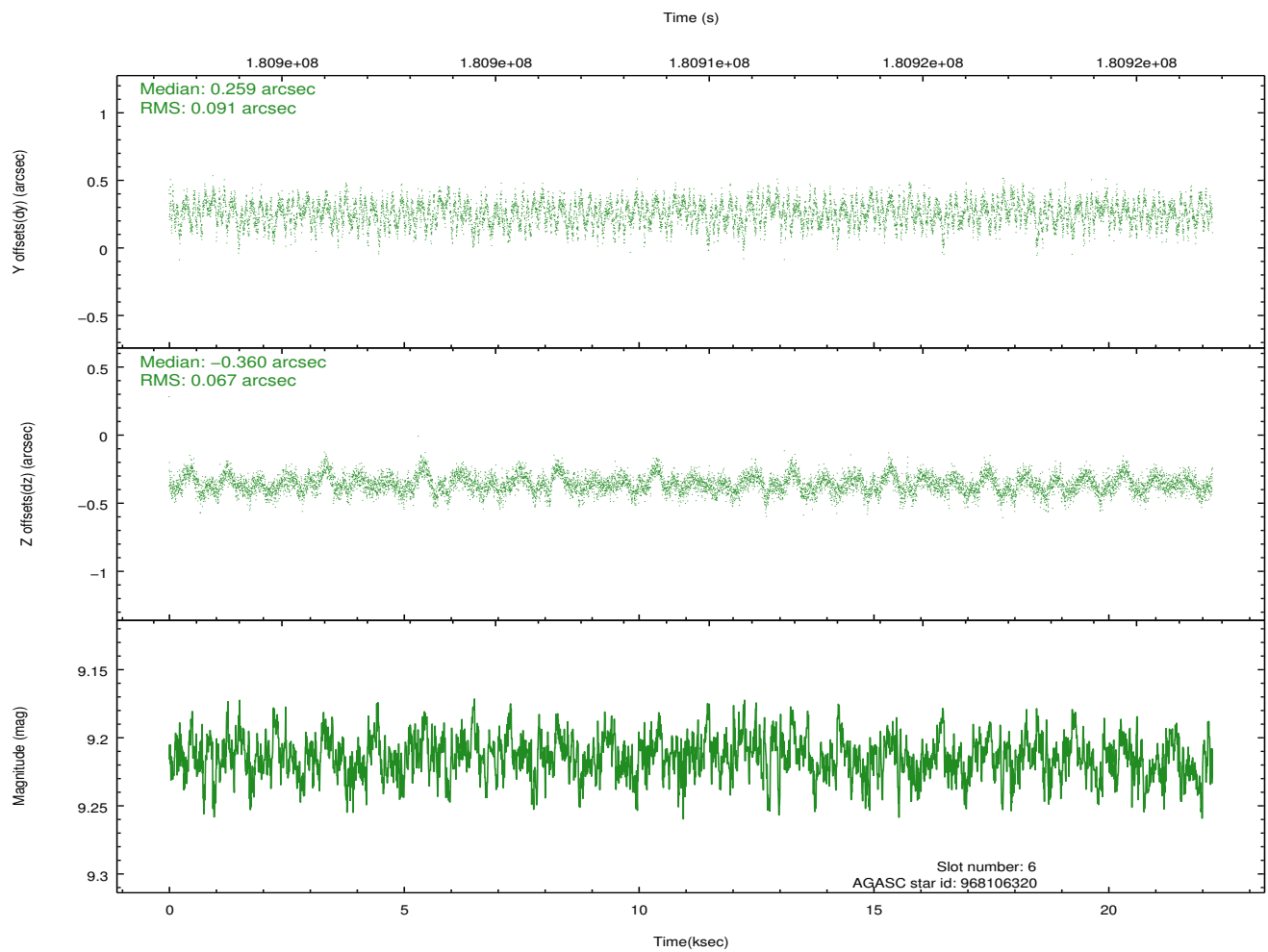
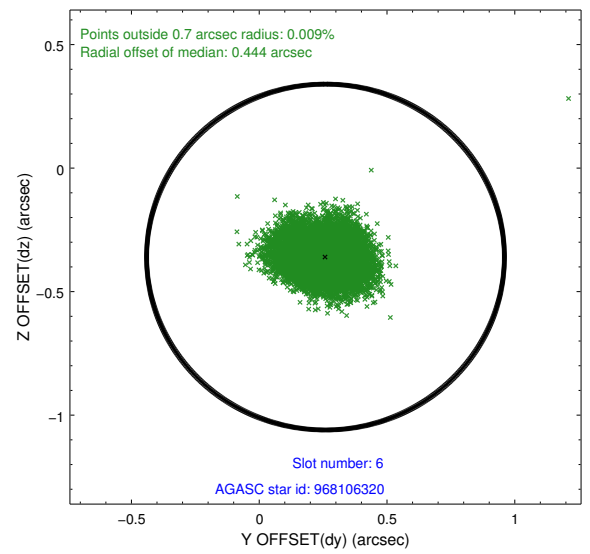
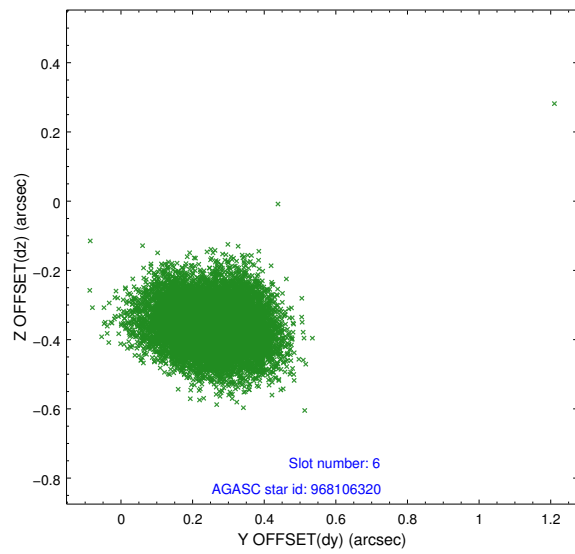
2.4.2 Slot 4



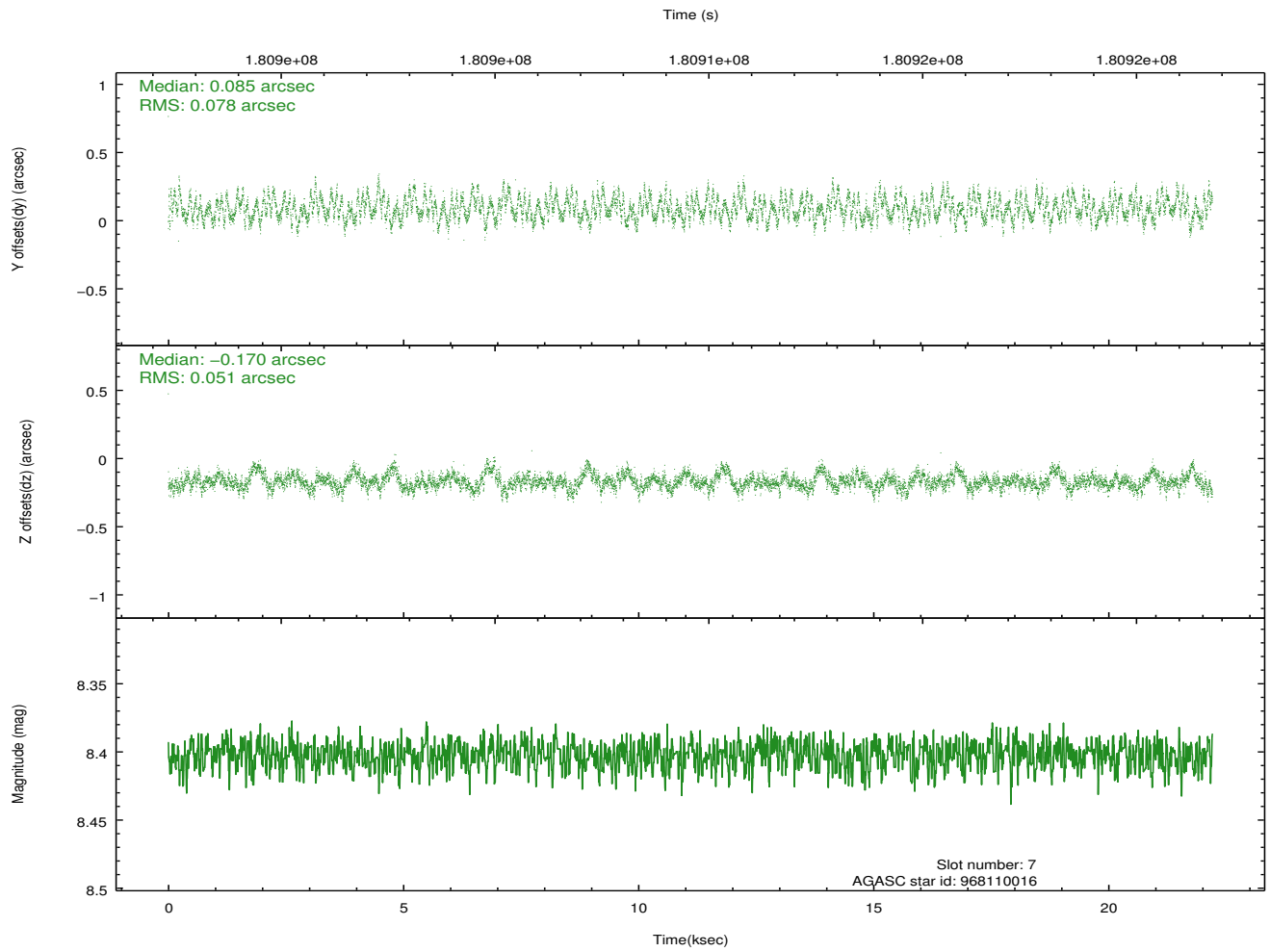
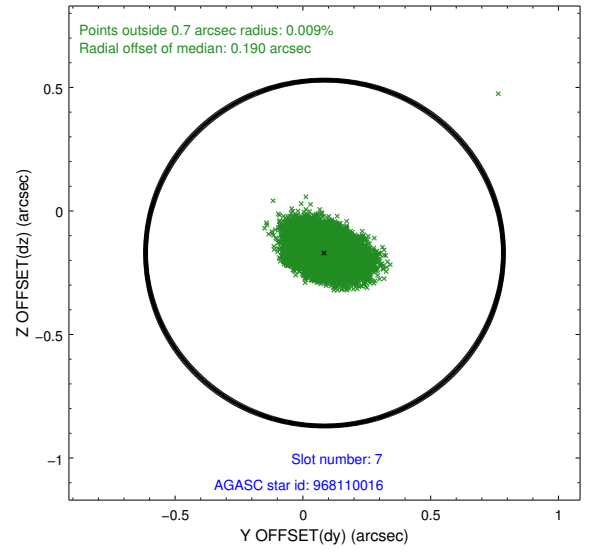
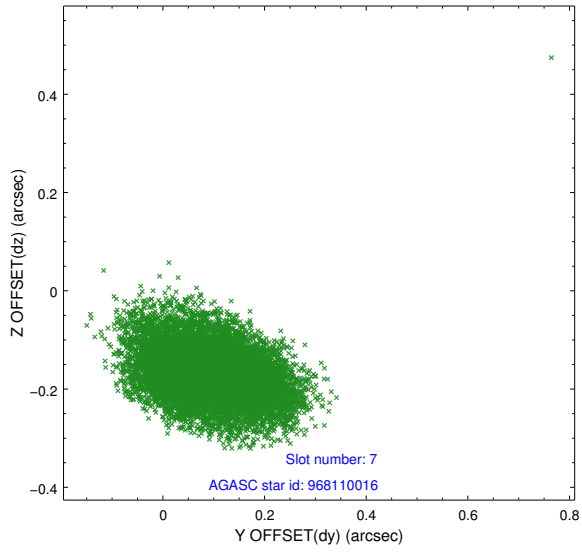
2.4.3 Slot 5



2.4.4 Slot 6

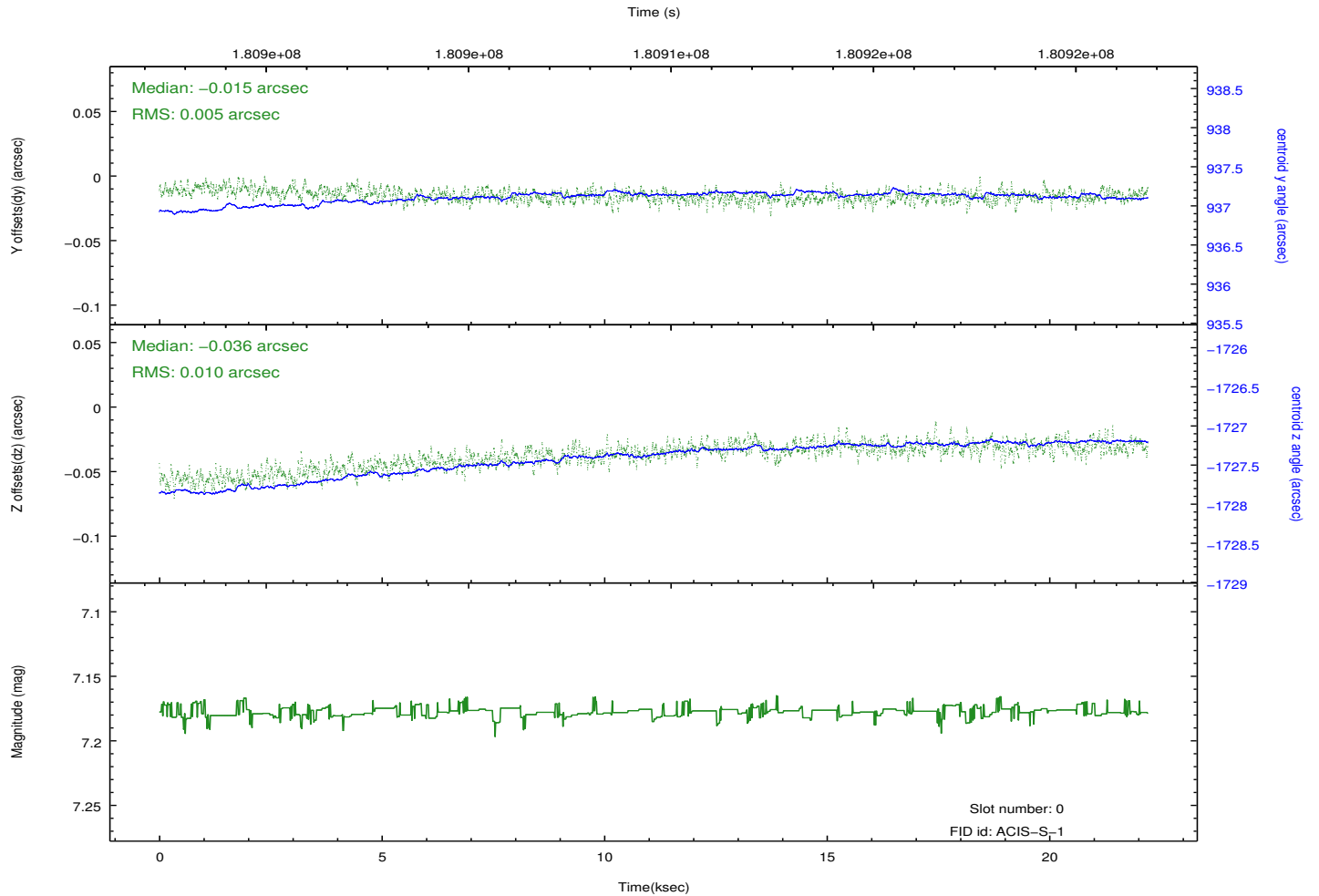
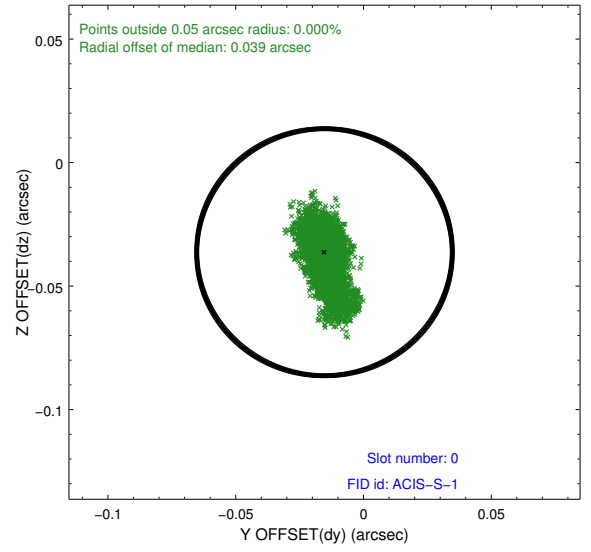
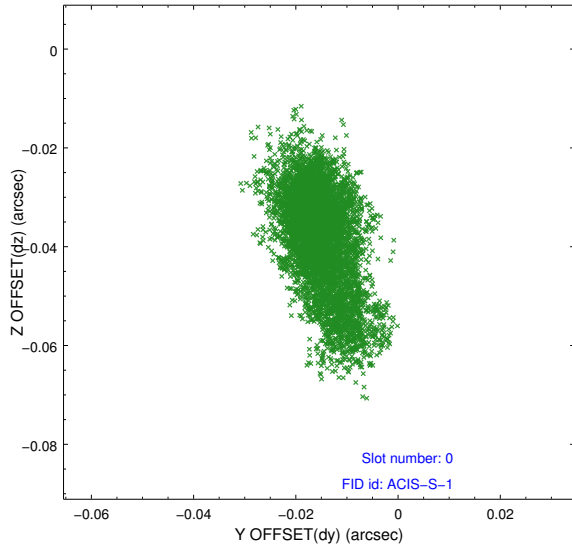


2.4.5 Slot 7

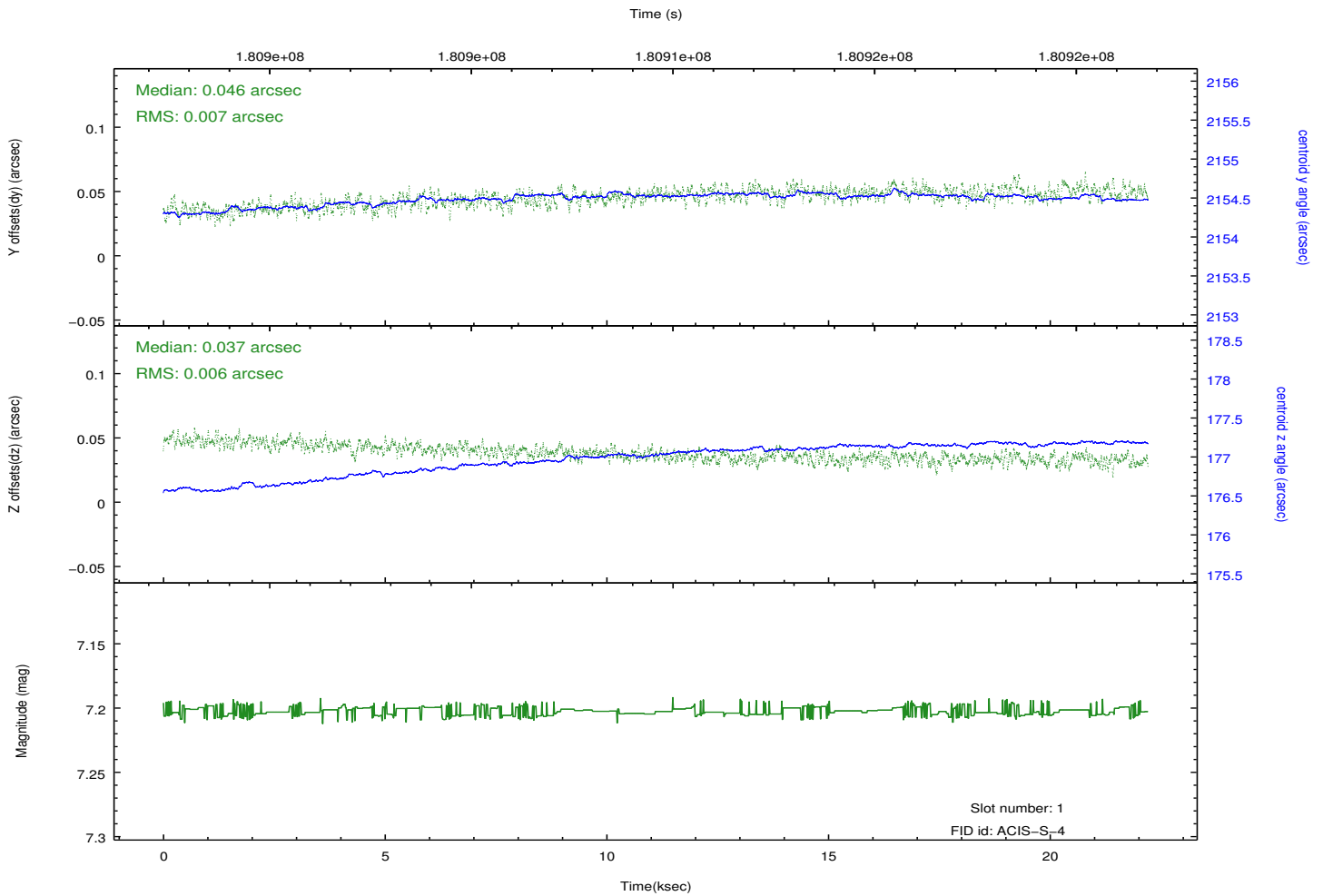
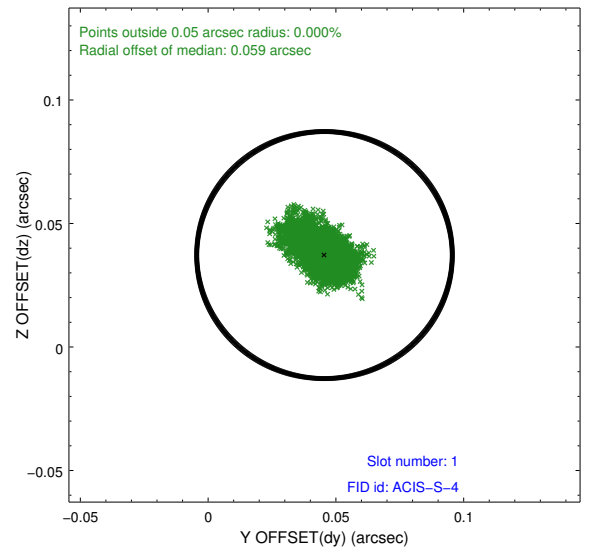
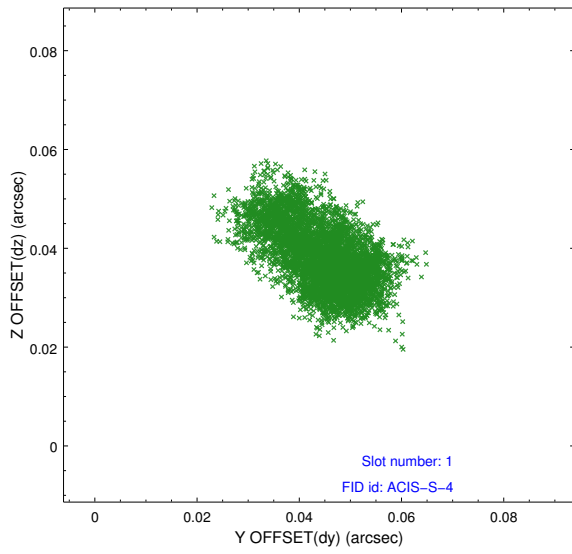


2.5 FID Slots

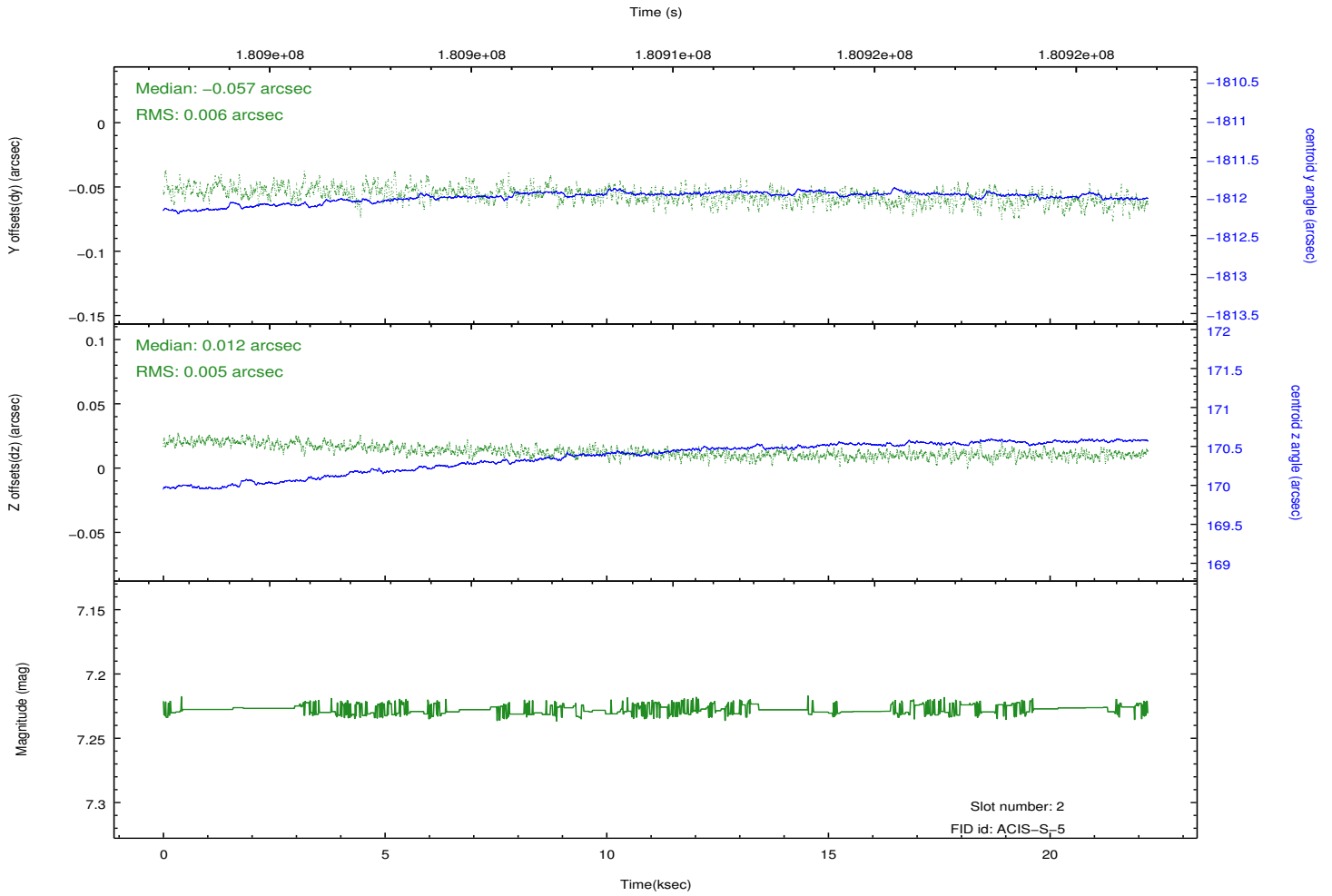
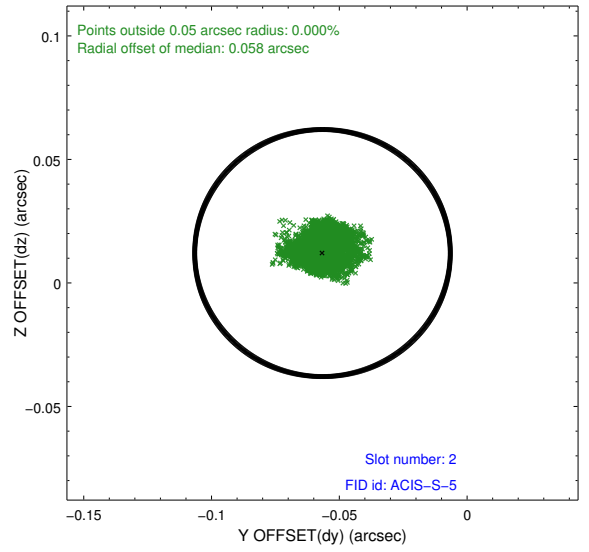
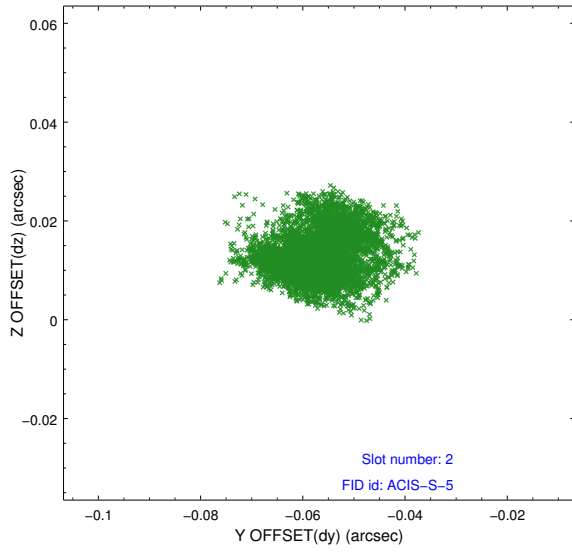
2.5.1 Slot 0



2.5.2 Slot 1



2.5.3 Slot 2



A Summary

A.1 Status

V&V Scientist	Jen Lauer
V&V Date (YYYY-MM-DD)	2012.11.29
V&V Edition	1
V&V Disposition and Status	OK
V&V Charge Time	22.209

A.2 Comments