

V&V Reference Report

L2 ASCDS Version : 8.4.5

Observation 3550 - L2 Version 4
Chandra X-Ray Center

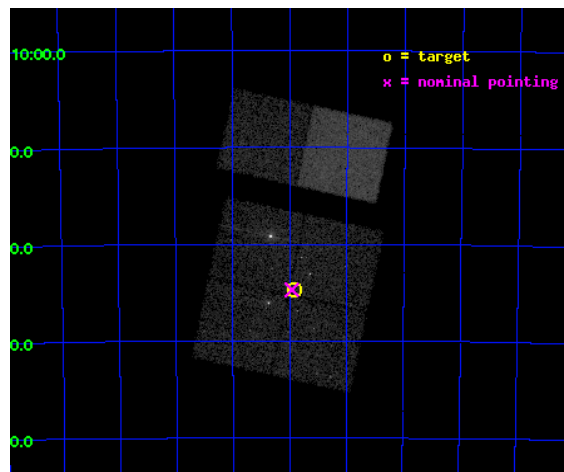
L2 Processing Date : Oct 17 2012

Contents

1	Front	2
2	OBI	3
2.1	OBI	3
2.1.1	Images	3
2.1.2	Bias	3
2.1.3	Parameters	4
2.1.4	Events	4
2.2	Compared Parameters	5
2.3	Aspect	6
2.4	Star Slots	9
2.4.1	Slot 3	9
2.4.2	Slot 4	10
2.4.3	Slot 5	11
2.4.4	Slot 6	12
2.5	FID Slots	13
2.5.1	Slot 0	13
2.5.2	Slot 1	14
2.5.3	Slot 2	15
A	Summary	16
A.1	Status	16
A.2	Comments	16

1 Front

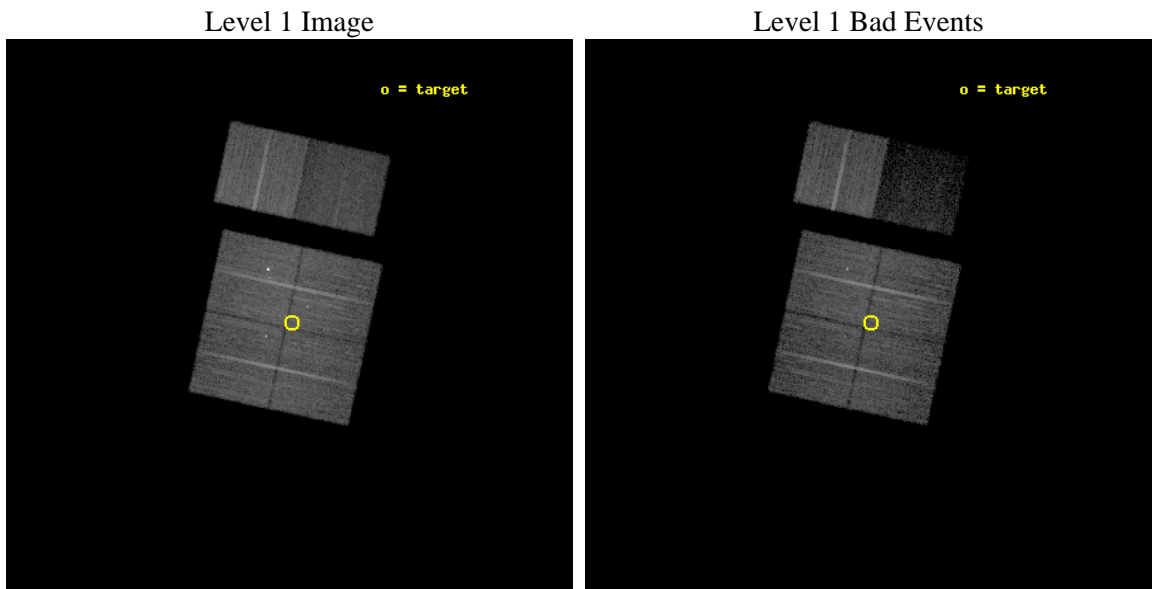
seq_num	600295	Sequence number
obs_id	3550	Observation id
title	X-RAY SOURCES IN THE NEARBY BARRED SPIRAL GALAXY NGC 1313	Proposal
observer	Professor Gordon Garmire	Principal investigator
object	NGC 1313	Source name
dtcycle	0	
cycle	P	events from which exps? Prim/Second/Both
ra_targ	49.479167	Observer's specified target RA [deg]
dec_targ	-66.577778	Observer's specified target Dec [deg]
ra_nom	49.49067685499	Nominal RA [deg]
dec_nom	-66.578643558848	Nominal Dec [deg]
roll_nom	12.219278007595	Nominal Roll [deg]
revision	4	Processing version of data
ontime	14758.399945021	Sum of GTIs [s]
livetime	14571.520198475	Livetime [s]
ontime0	14758.399945021	Sum of GTIs [s]
ontime1	14755.158954859	Sum of GTIs [s]
ontime2	14758.399945021	Sum of GTIs [s]
ontime3	14758.399945021	Sum of GTIs [s]
ontime6	14758.399945021	Sum of GTIs [s]
ontime7	14758.399945021	Sum of GTIs [s]
l2events	77093	Number of level 2 events



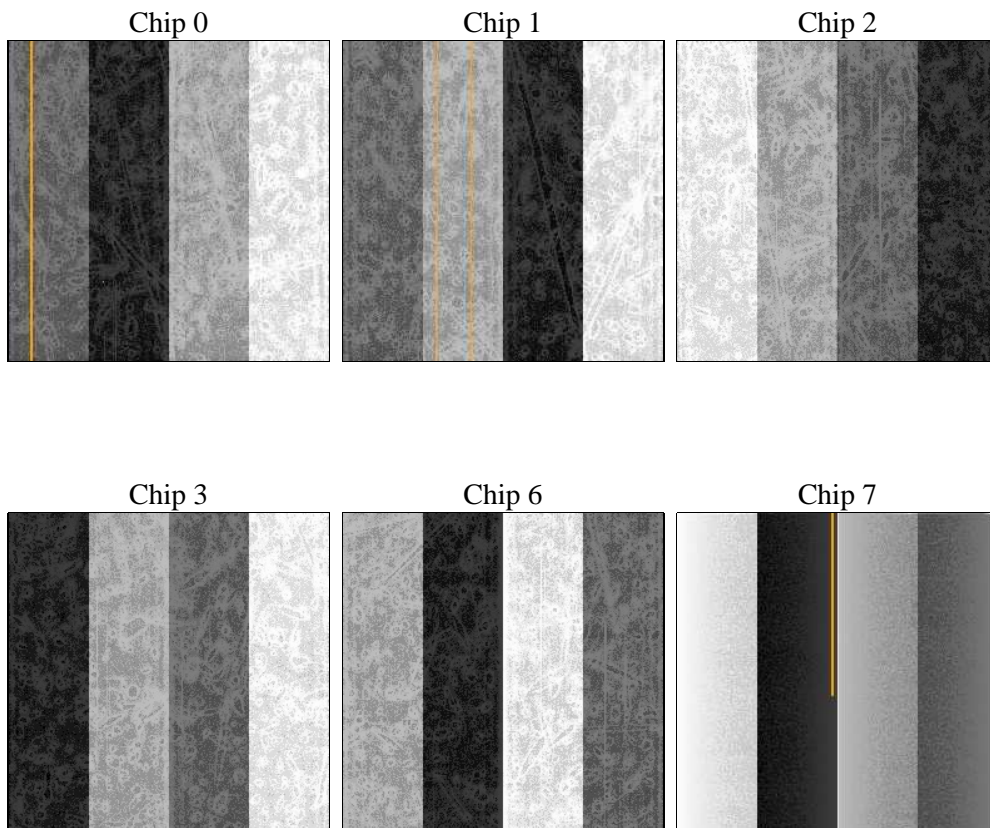
2 OBI

2.1 OBI

2.1.1 Images



2.1.2 Bias



2.1.3 Parameters

obi_num	1	Obi number	sched_exp_time	14800.000000	[s] Scheduled observation exposure time
ascdsver	8.4.5	Processing system revision	ontime	14758.399945021	Sum of GTIs [s]
caldbver	4.5.2	 	ontime0	14758.399945021	Sum of GTIs [s]
date	2012-10-17T11:59:31	Date and time of file creation	ontime1	14755.158954859	Sum of GTIs [s]
revision	4	Processing version of data	ontime2	14758.399945021	Sum of GTIs [s]
			ontime3	14758.399945021	Sum of GTIs [s]
			ontime6	14758.399945021	Sum of GTIs [s]
			ontime7	14758.399945021	Sum of GTIs [s]
			l1events	476269	Number of level 1 events

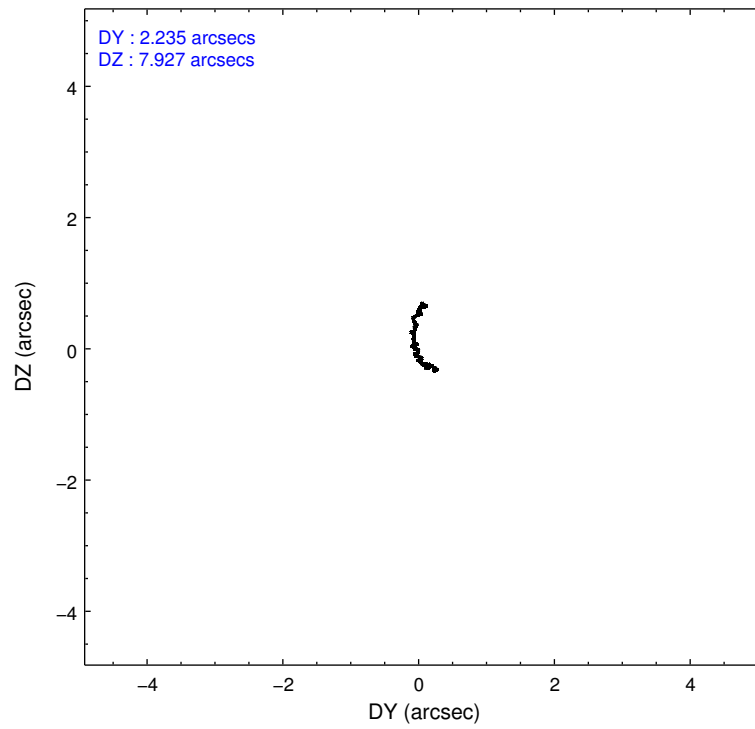
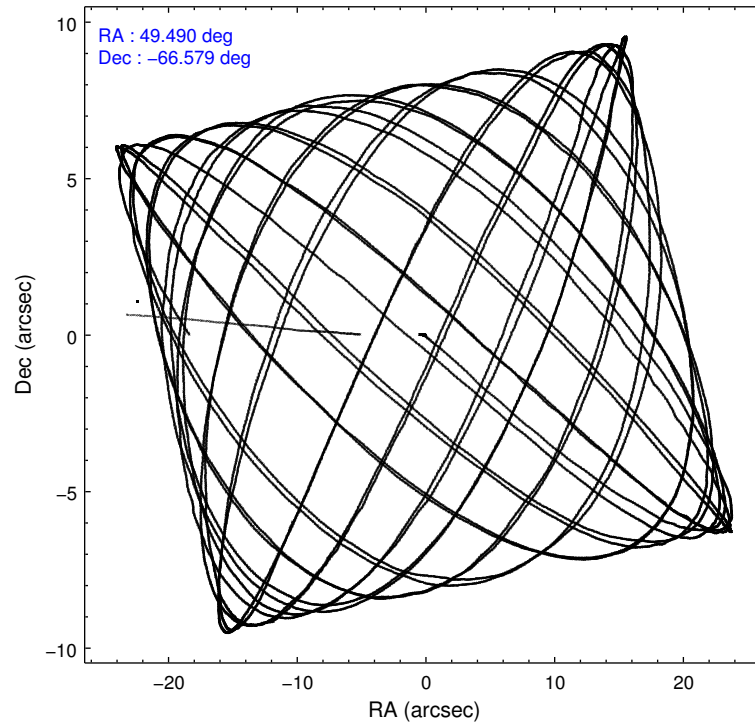
2.1.4 Events

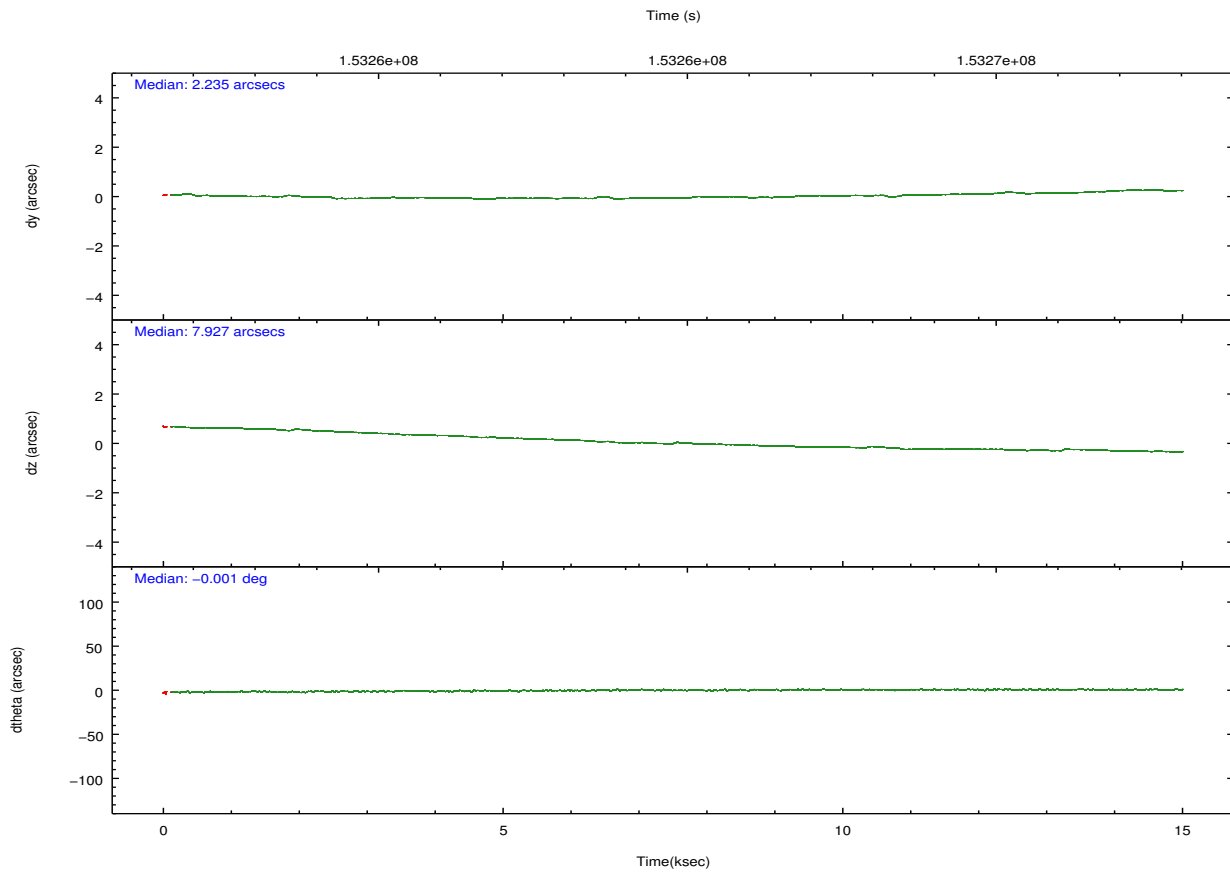
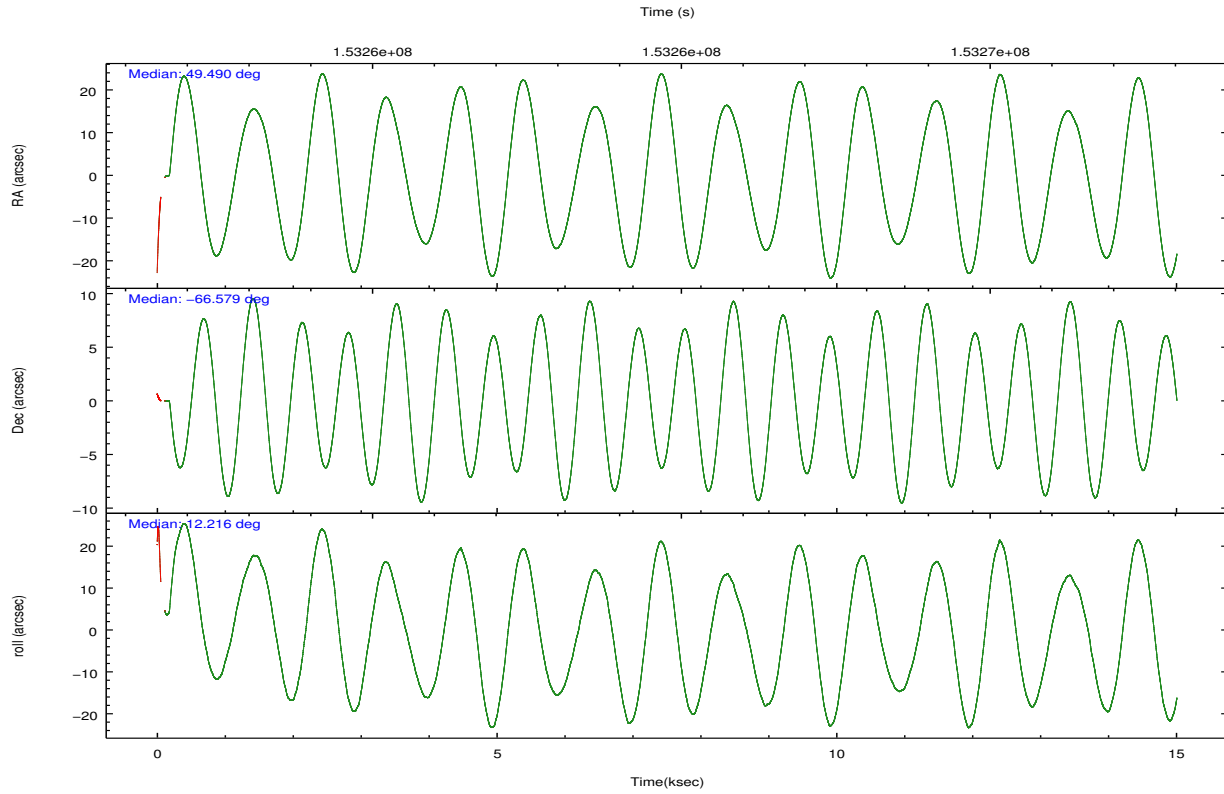
	ccd 0	ccd 1	ccd 2	ccd 3	ccd 6	ccd 7		ccd 0	ccd 1	ccd 2	ccd 3	ccd 6	ccd 7
level 1 events	78933	73750	106803	83021	89488	44274	grade 0 events	6621	3641	14650	4603	4089	4280
rejected events	66193	65246	83640	74218	80273	16174		8%	4%	13%	5%	4%	9%
rejected %	83%	88%	78%	89%	89%	36%	grade 1 events	281	26	814	88	39	84
								0%	0%	0%	0%	0%	0%
							grade 2 events	2920	1844	4174	1644	2279	6579
								3%	2%	3%	1%	2%	14%
							grade 3 events	972	916	1375	772	778	2908
								1%	1%	1%	0%	0%	6%
							grade 4 events	933	823	1394	710	785	2923
								1%	1%	1%	0%	0%	6%
							grade 5 events	1292	1284	1393	1264	1286	4099
								1%	1%	1%	1%	1%	9%
							grade 6 events	1297	1285	1576	1076	1292	11427
								1%	1%	1%	1%	1%	25%
							grade 7 events	64617	63931	81427	72864	78940	11974
								81%	86%	76%	87%	88%	27%

2.2 Compared Parameters

Parameter	Planned	Actual	Parameter	Planned	Actual
Instrument	ACIS	ACIS	Obspar format version number	7	7
Detector	ACIS-012367	ACIS-012367	Obspar file type	PREDICTED	ACTUAL
Grating	NONE	NONE	Obspar update status	NONE	UPDATED
Data mode	VFAINT	VFAINT	Number of optional ACIS chips dropped	0	0
Observation mode	POINTING	POINTING	On-chip summing requested	N	N
[deg] Pointing RA	49.439755	49.49067685499014	Subarray requested	NONE	NONE
[deg] Pointing Dec	-66.597126	-66.5786435588477	Alternating exposures requested	N	N
[deg] Pointing Roll	11.963826	12.21927800759542	[s] Primary exposure time	0.000000	3.2
[mm] SIM focus pos	-0.782348	-0.7809083437167272			
[mm] SIM defocus	0	0.001439871863259334			
[mm] SIM translation stage pos	-233.592463	-233.5874344608287			
[mm] SIM translation stage offset	0	-0.005018542100998502			
[s] Observation start time (MET)	153257470.184000	153256475.29175			
Observation start date	2002-11-09T19:30:06	2002-11-09T19:14:35			
[s] Observation end time (MET)	153272270.184000	153272926.02993			
Observation end date	2002-11-09T23:36:46	2002-11-09T23:48:46			
Read mode	TIMED	TIMED			

2.3 Aspect



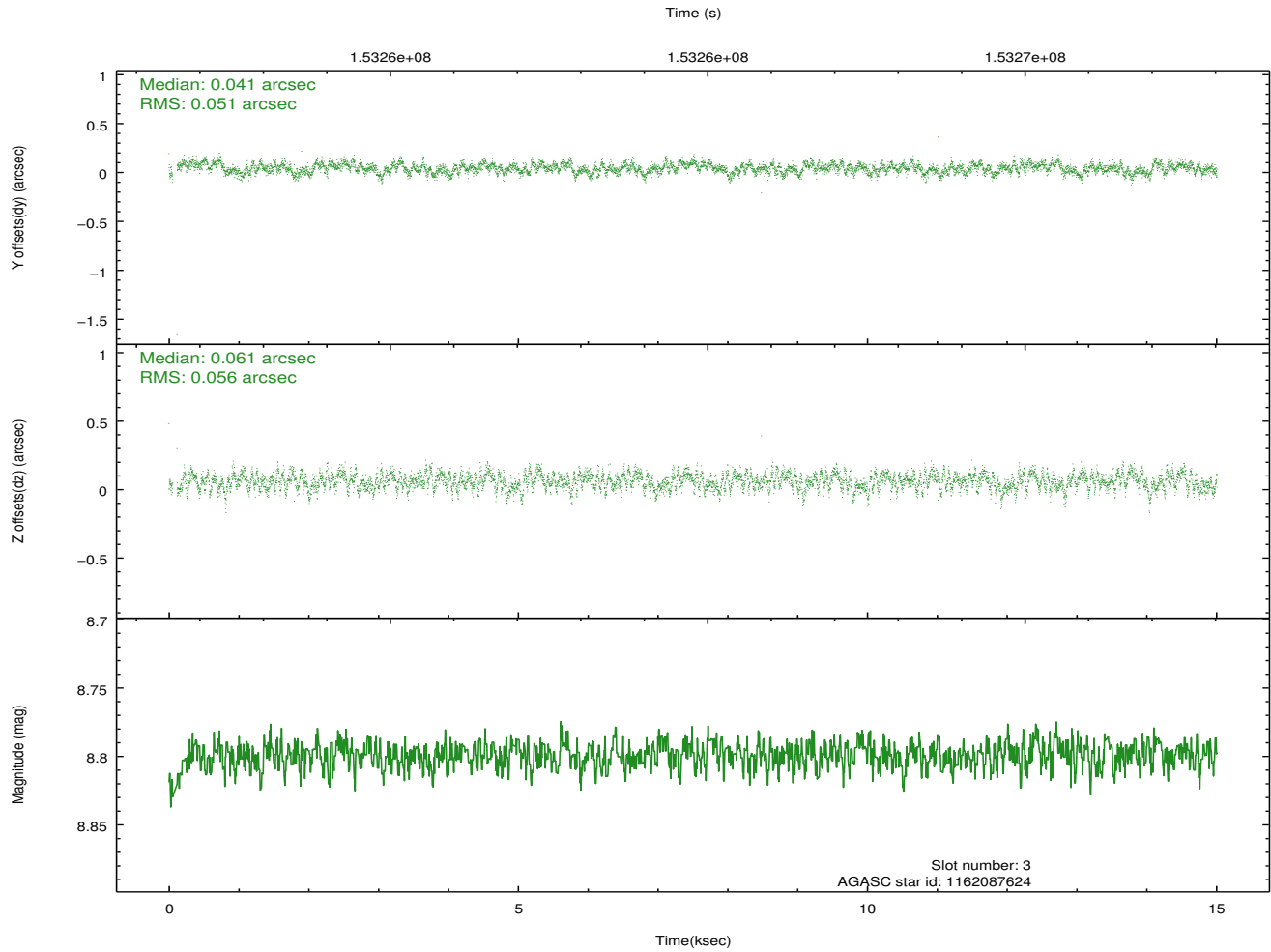
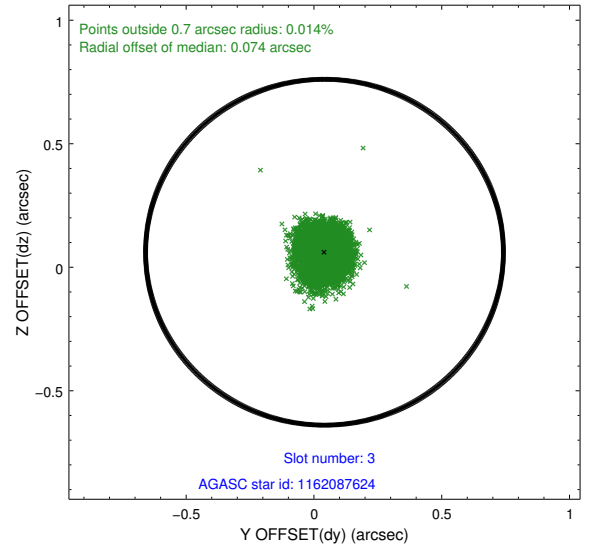
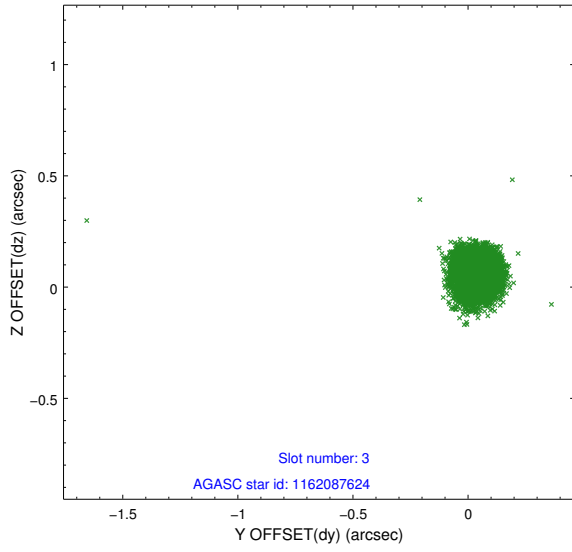


Slot Statistics

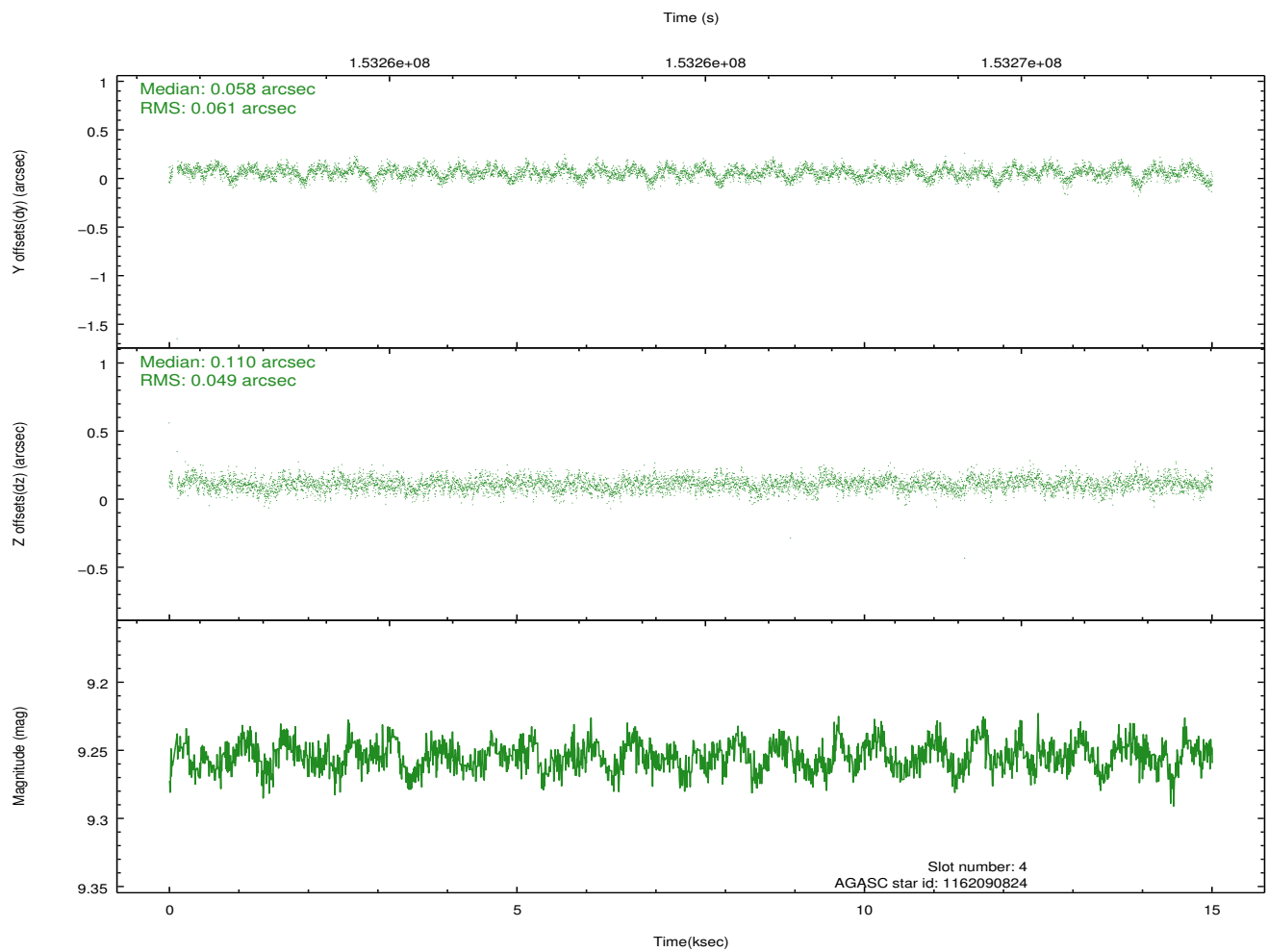
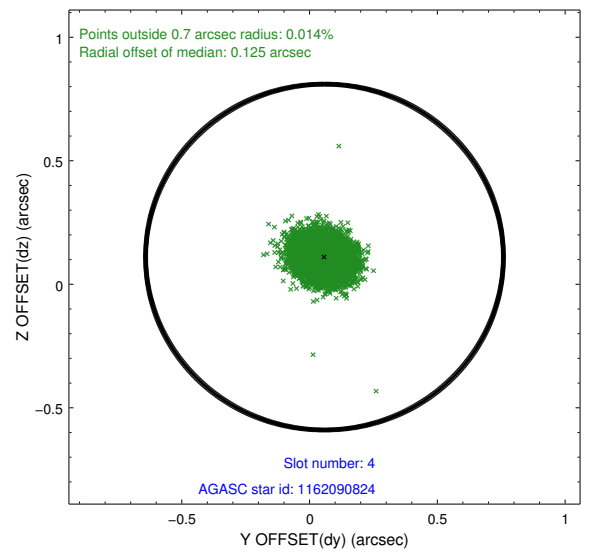
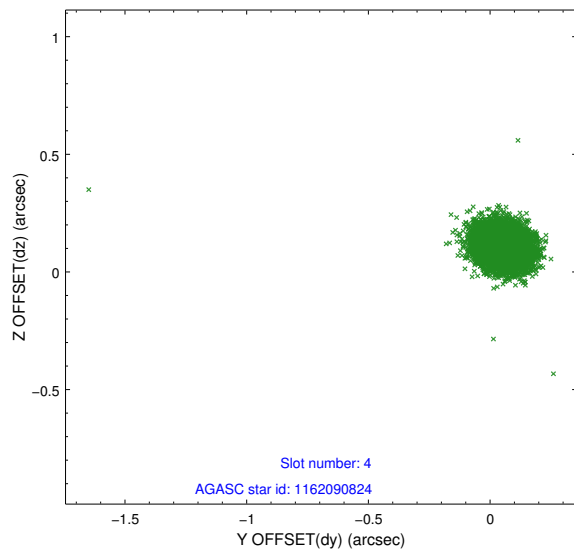
	status	id	mag	n_pts	med_dy	med_dz	dr1
	FID	ACIS-I-1	7.25	3645	-0.022	0.056	0.019
	FID	ACIS-I-5	7.24	3644	-0.038	0.040	0.012
	FID	ACIS-I-6	7.26	3646	-0.031	-0.025	0.011
	GUIDE	1162087624	8.80	7293	0.041	0.061	0.078
	GUIDE	1162090824	9.25	7294	0.058	0.110	0.080
	GUIDE	1162094224	9.69	7288	0.039	0.063	0.112
	GUIDE	1162088248	7.59	7293	-0.131	-0.237	0.079
0.000	0.000	0.000	0.000000	0.000000	0.00	0.00	

2.4 Star Slots

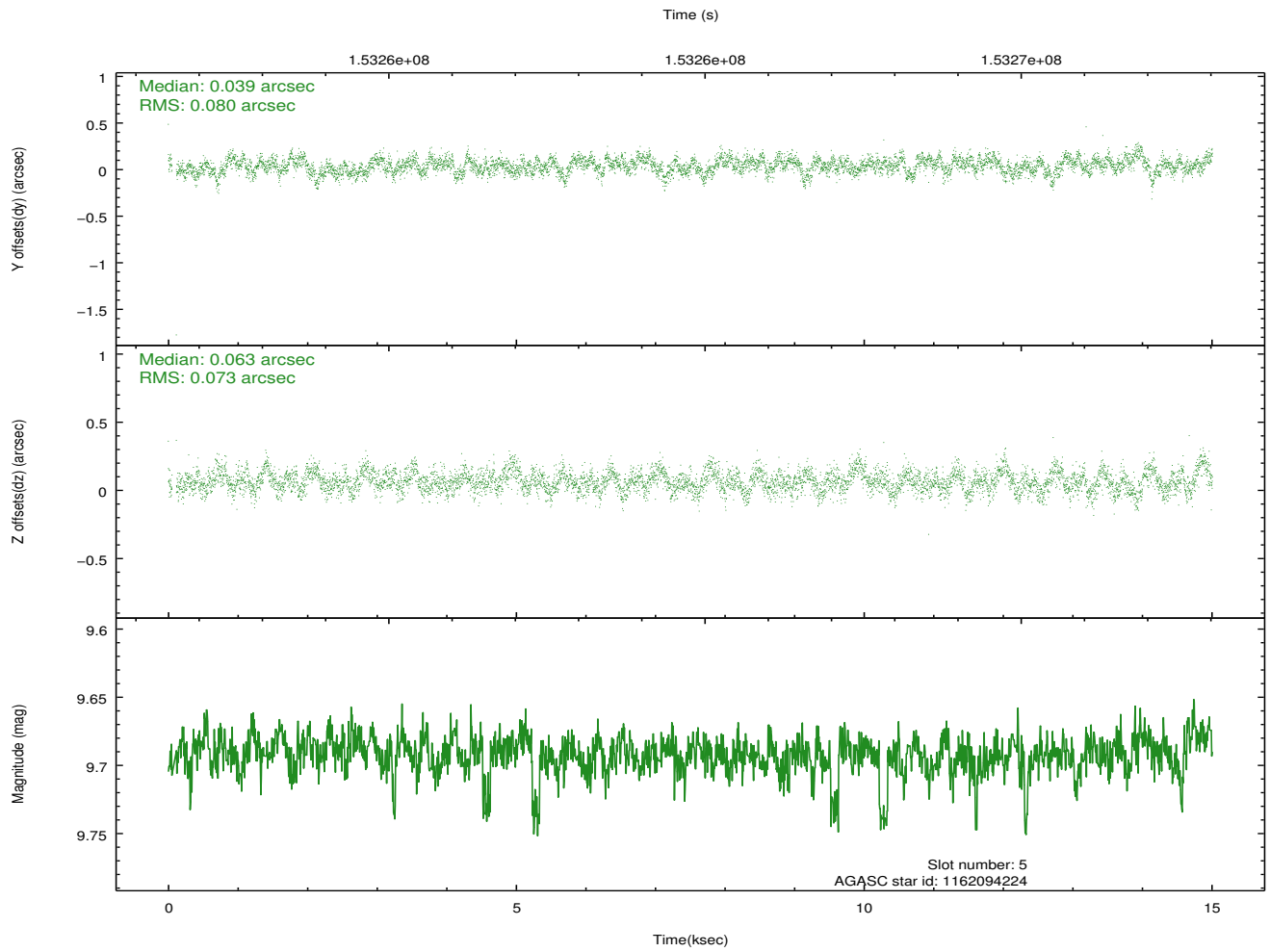
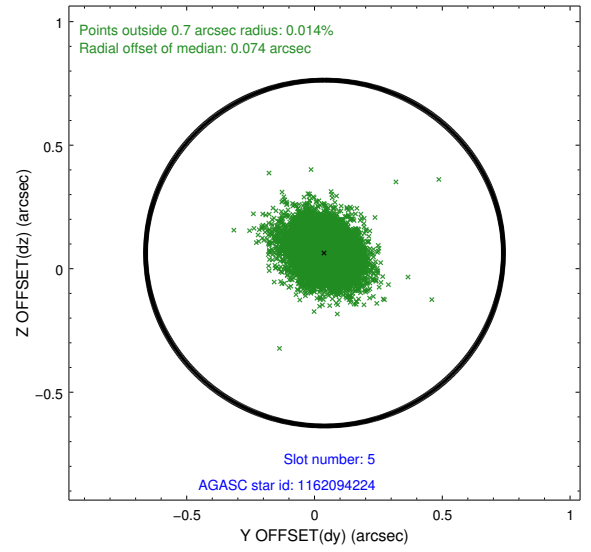
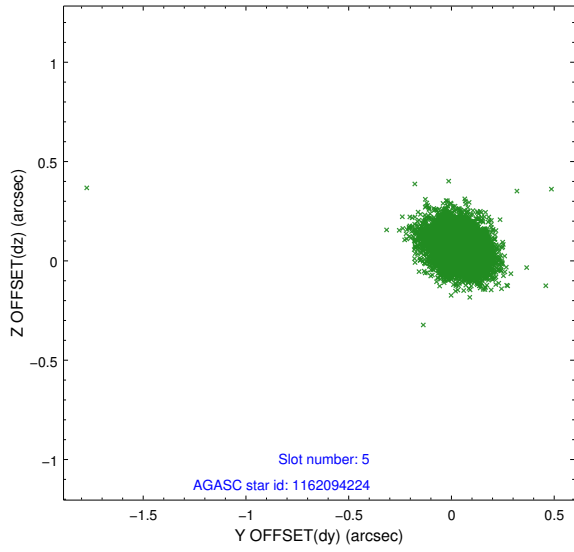
2.4.1 Slot 3



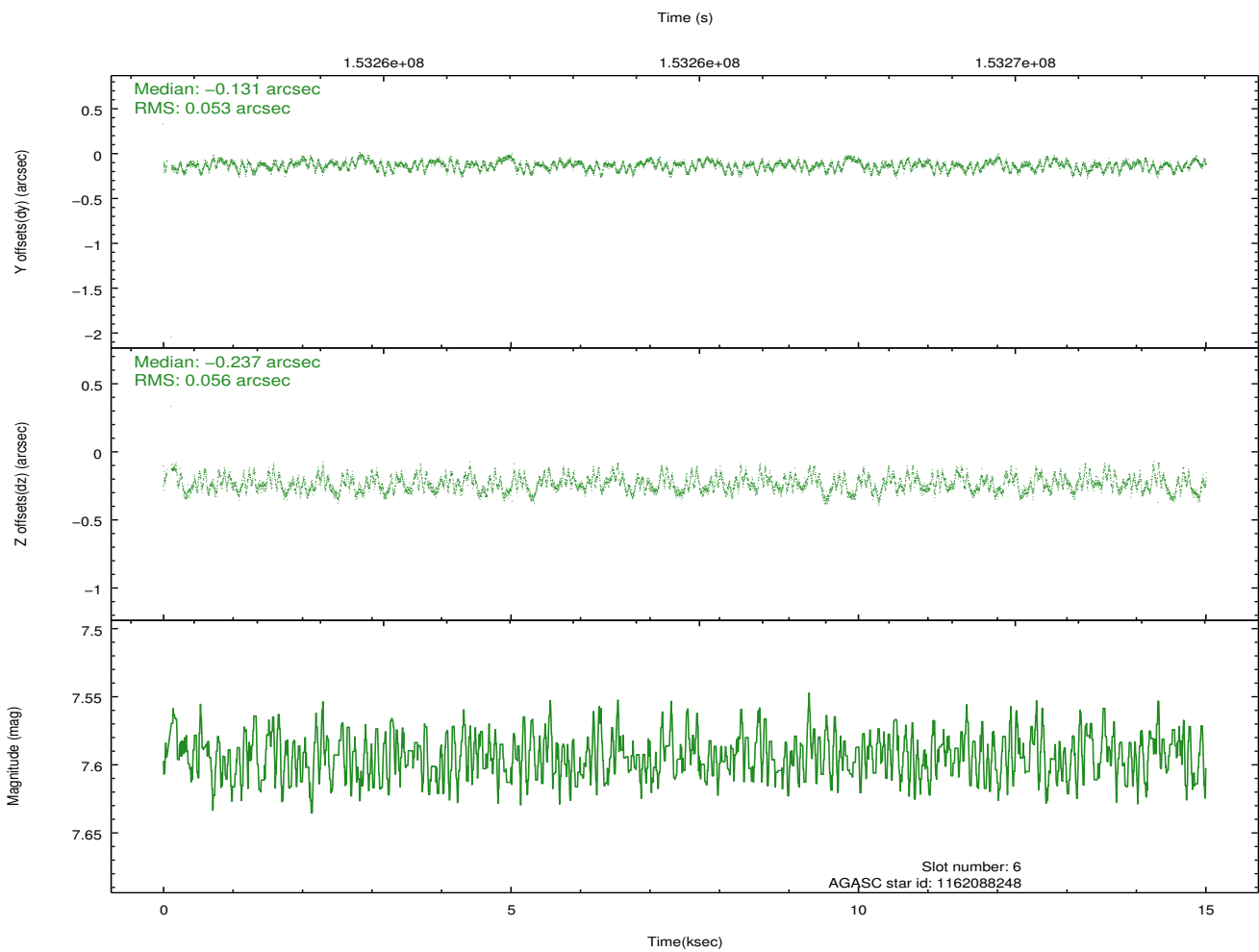
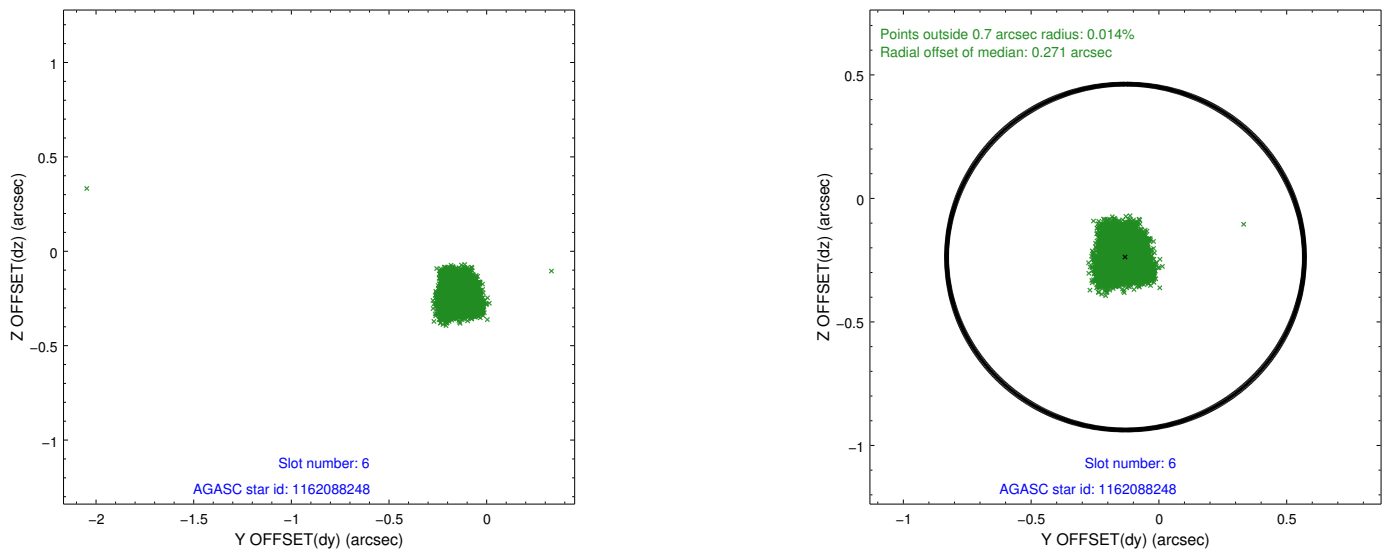
2.4.2 Slot 4



2.4.3 Slot 5

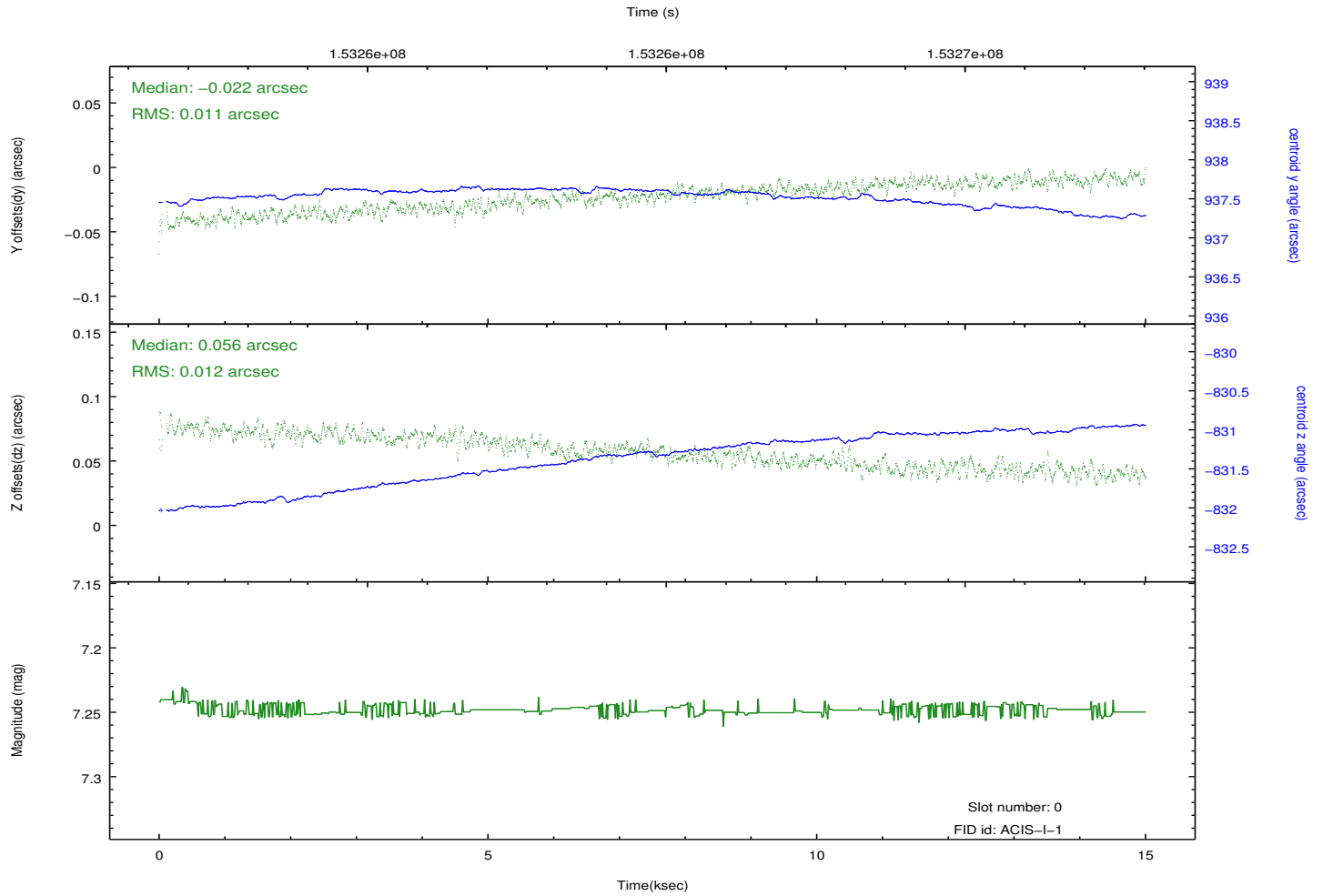
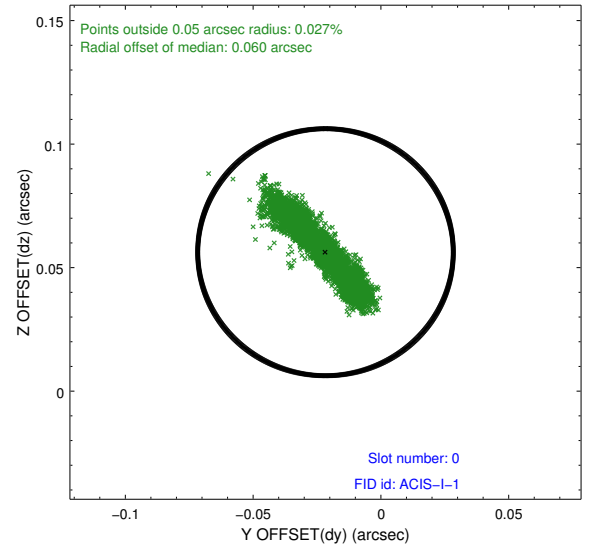
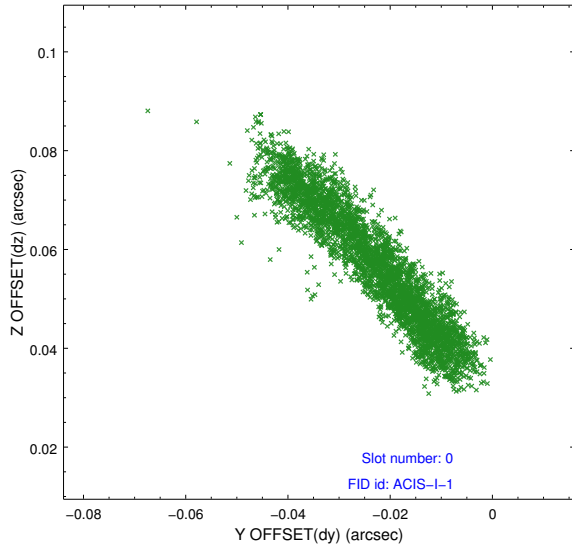


2.4.4 Slot 6

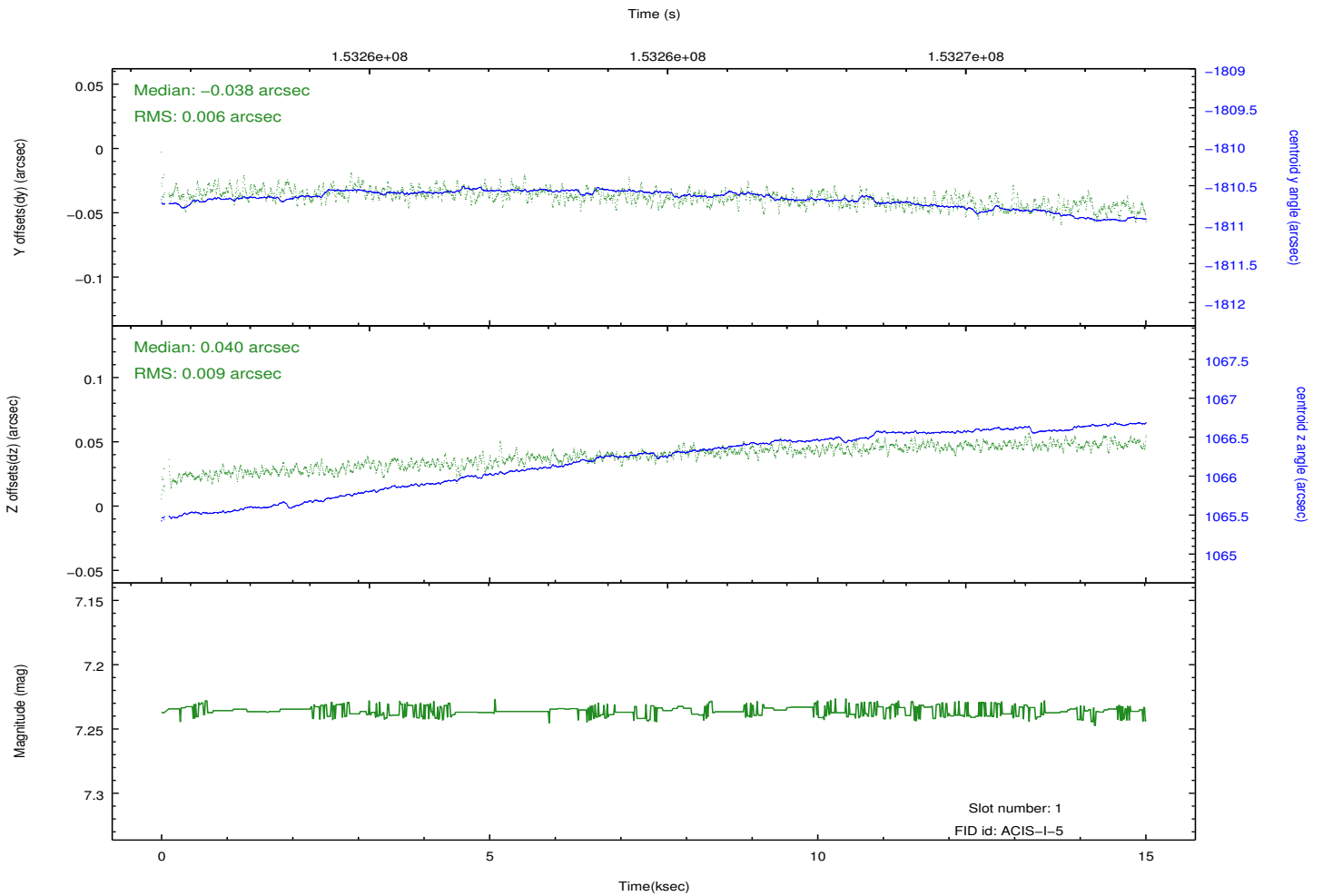
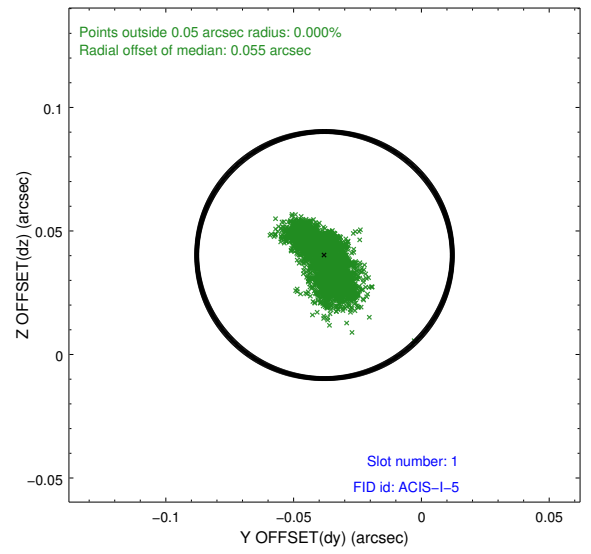
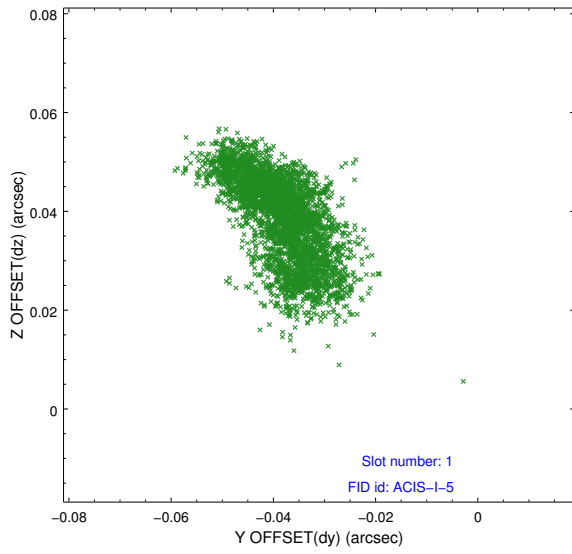


2.5 FID Slots

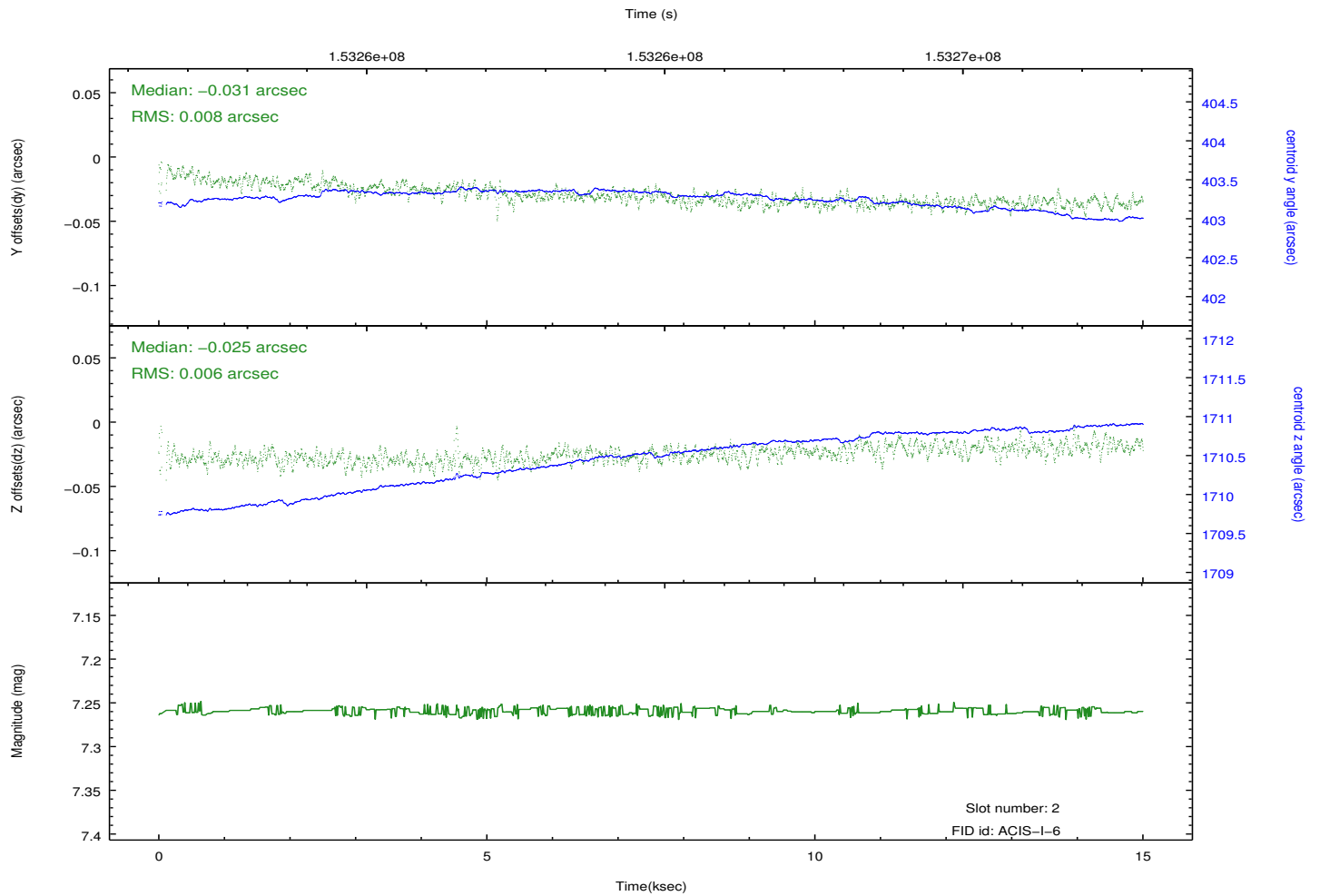
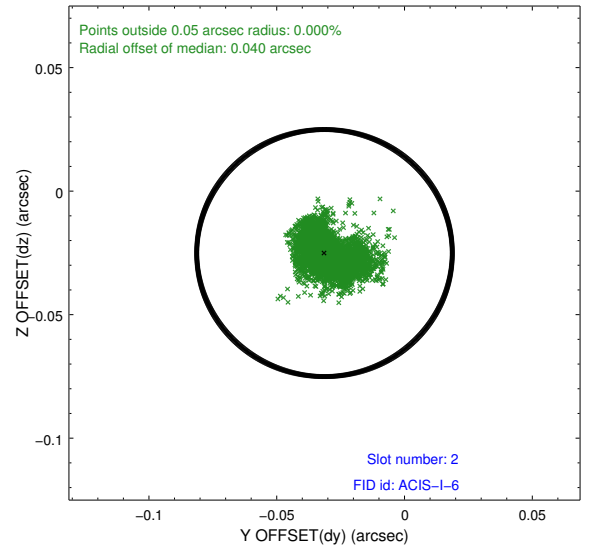
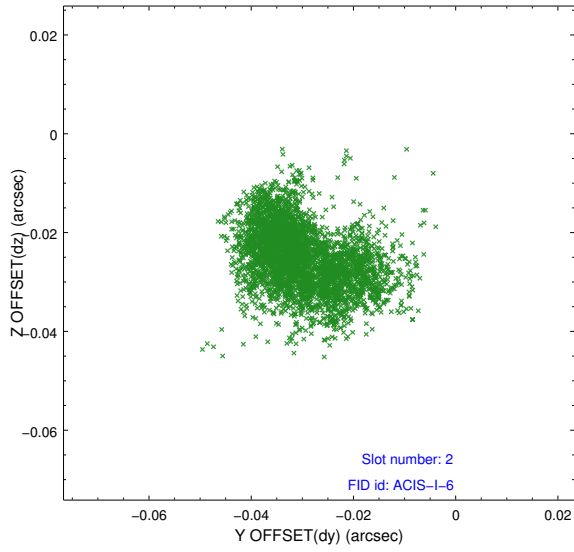
2.5.1 Slot 0



2.5.2 Slot 1



2.5.3 Slot 2



A Summary

A.1 Status

V&V Scientist	Jen Lauer
V&V Date (YYYY-MM-DD)	2013.01.30
V&V Edition	1
V&V Disposition and Status	OK
V&V Charge Time	14.761

A.2 Comments

Monitoring observation.