

V&V Reference Report

L2 ASCDS Version : 8.4.5

Observation 3590 - L2 Version 3
Chandra X-Ray Center

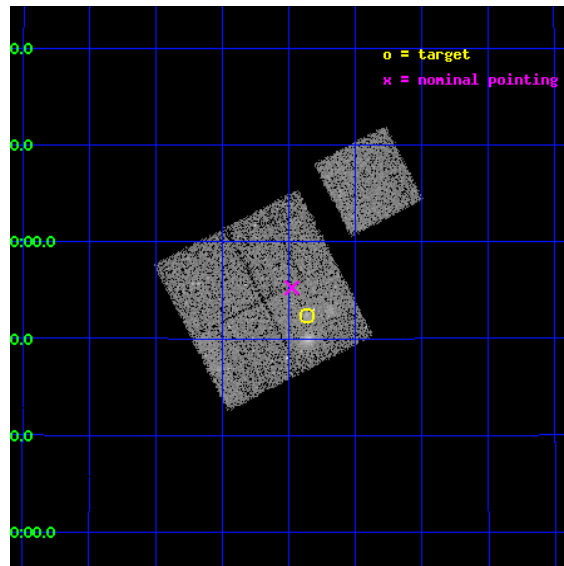
L2 Processing Date : Nov 9 2012

Contents

1	Front	2
2	OBI	3
2.1	OBI	3
2.1.1	Images	3
2.1.2	Bias	3
2.1.3	Parameters	4
2.1.4	Events	4
2.2	Compared Parameters	5
2.3	Aspect	6
2.4	Star Slots	9
2.4.1	Slot 3	9
2.4.2	Slot 4	10
2.4.3	Slot 5	11
2.4.4	Slot 6	12
2.4.5	Slot 7	13
2.5	FID Slots	14
2.5.1	Slot 0	14
2.5.2	Slot 1	15
2.5.3	Slot 2	16
A	Summary	17
A.1	Status	17
A.2	Comments	17

1 Front

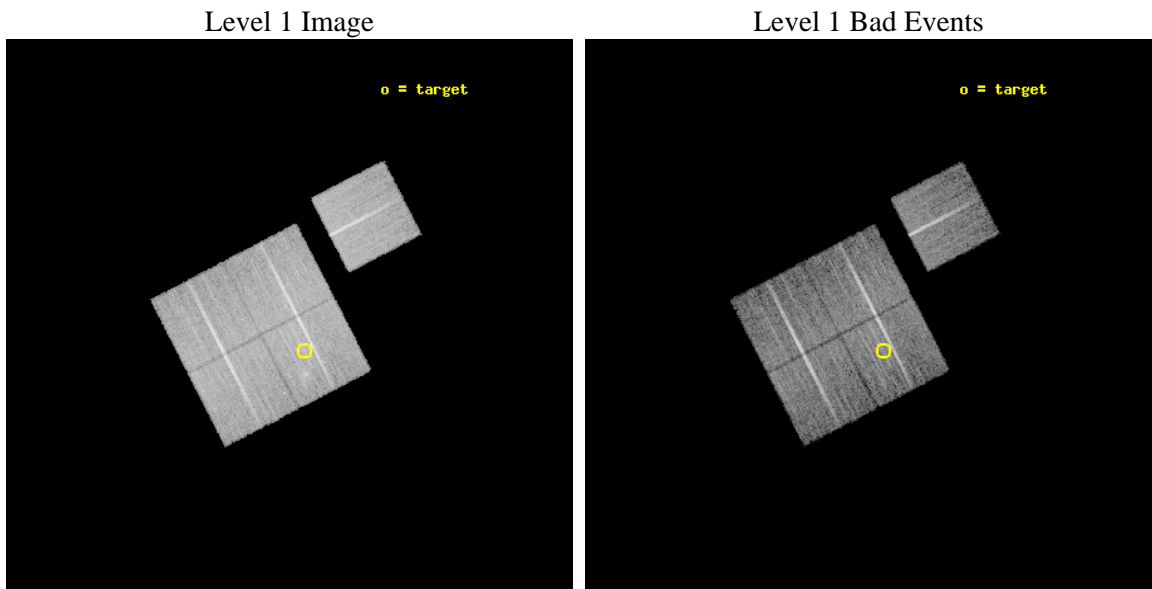
seq_num	800311	Sequence number
obs_id	3590	Observation id
title	X-RAY/SZ DETERMINATION OF COSMOLOGICAL PARAMETERS	Proposal title
observer	DR. LEON VANSPEYBROECK	Principal investigator
object	MACS-J1226.8+2153	Source name
dtcycle	0	
cycle	P	events from which exps? Prim/Second/Both
ra_targ	186.715417	Observer's specified target RA [deg]
dec_targ	21.873611	Observer's specified target Dec [deg]
ra_nom	186.74422068028	Nominal RA [deg]
dec_nom	21.920935919999	Nominal Dec [deg]
roll_nom	62.650159169551	Nominal Roll [deg]
revision	3	Processing version of data
ontime	19260.17705223	Sum of GTIs [s]
livetime	19008.528659906	Livetime [s]
ontime0	19260.177062213	Sum of GTIs [s]
ontime1	19263.318032444	Sum of GTIs [s]
ontime2	19260.1770522	Sum of GTIs [s]
ontime3	19260.17705223	Sum of GTIs [s]
ontime6	19263.31802249	Sum of GTIs [s]
l2events	45748	Number of level 2 events



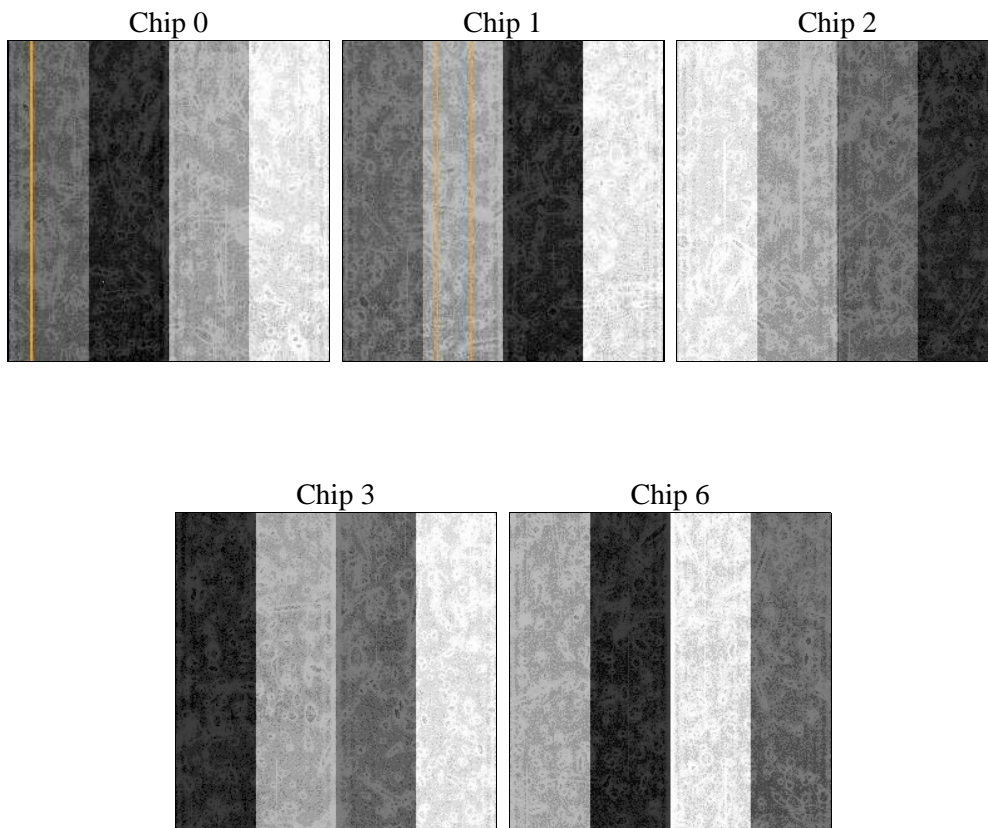
2 OBI

2.1 OBI

2.1.1 Images



2.1.2 Bias



2.1.3 Parameters

obi_num	0	Obi number	sched_exp_time	19500.000000	[s] Scheduled observation exposure time
ascdsver	8.4.5	Processing system revision	ontime	19260.17705223	Sum of GTIs [s]
caldbver	4.5.2	 	ontime0	19260.177062213	Sum of GTIs [s]
date	2012-11-09T07:44:39	Date and time of file creation	ontime1	19263.318032444	Sum of GTIs [s]
revision	3	Processing version of data	ontime2	19260.1770522	Sum of GTIs [s]
			ontime3	19260.17705223	Sum of GTIs [s]
			ontime6	19263.31802249	Sum of GTIs [s]
			l1events	454631	Number of level 1 events

2.1.4 Events

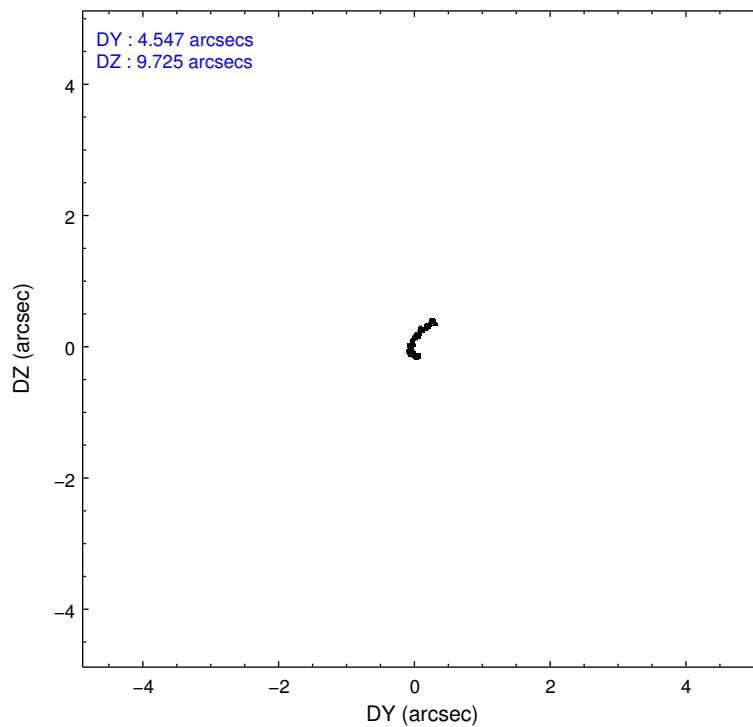
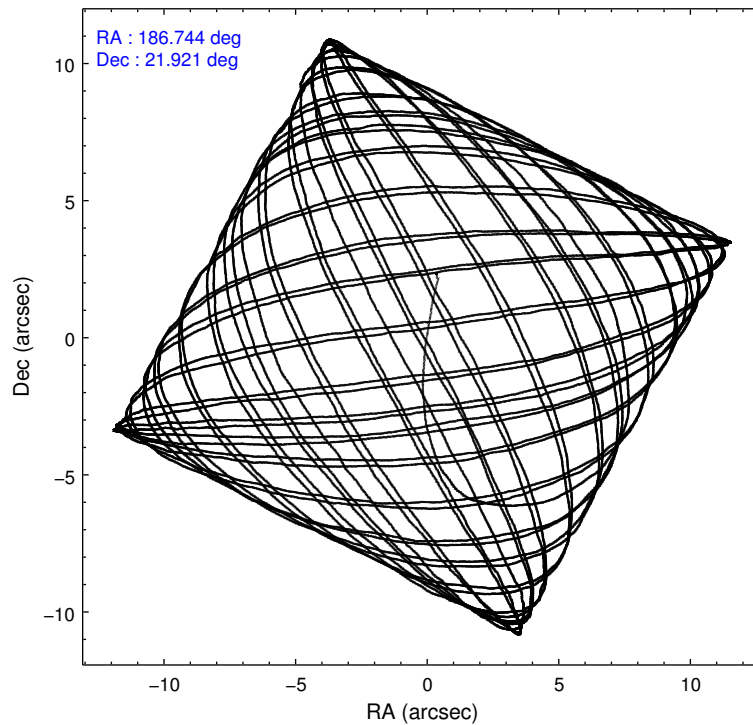
	ccd 0	ccd 1	ccd 2	ccd 3	ccd 6
level 1 events	86232	86502	94405	93717	93775
rejected events	75997	75246	84286	81599	83530
rejected %	88%	86%	89%	87%	89%

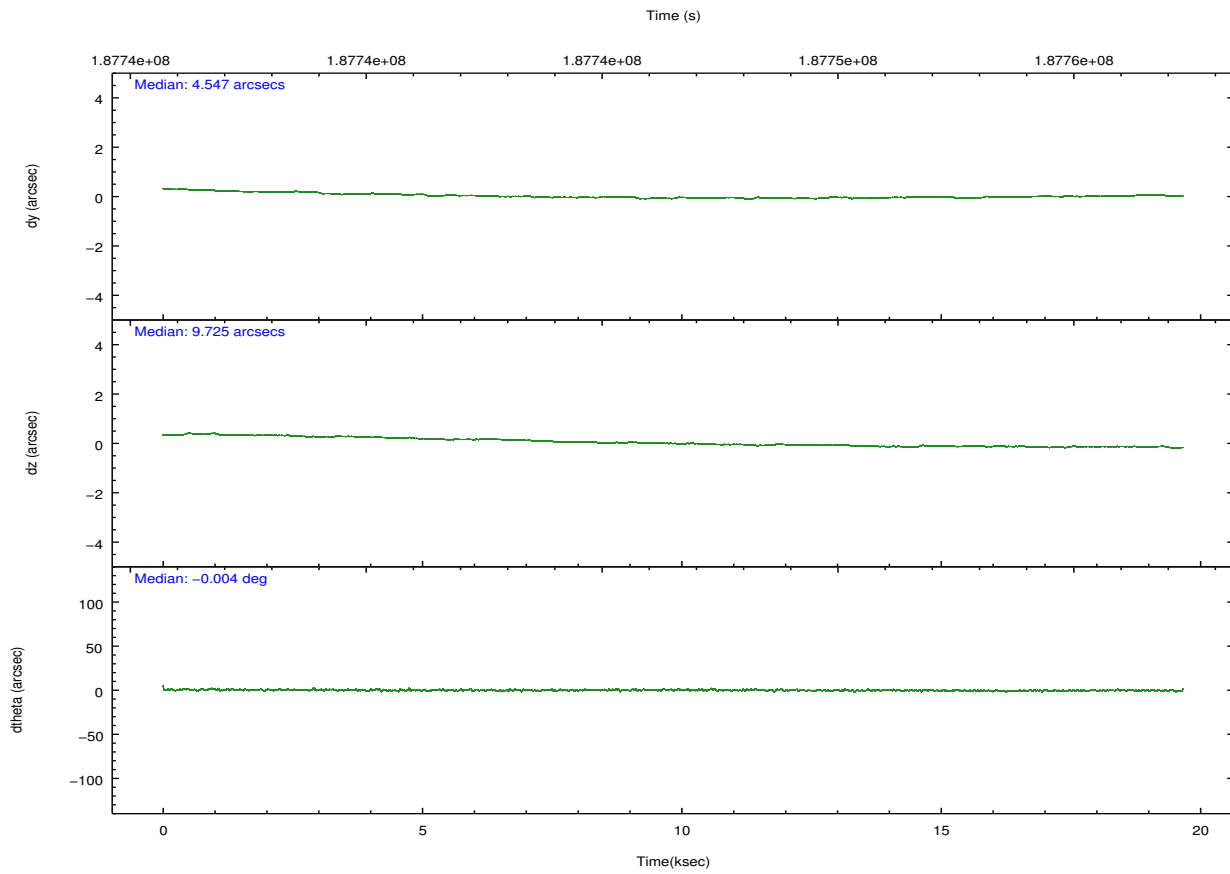
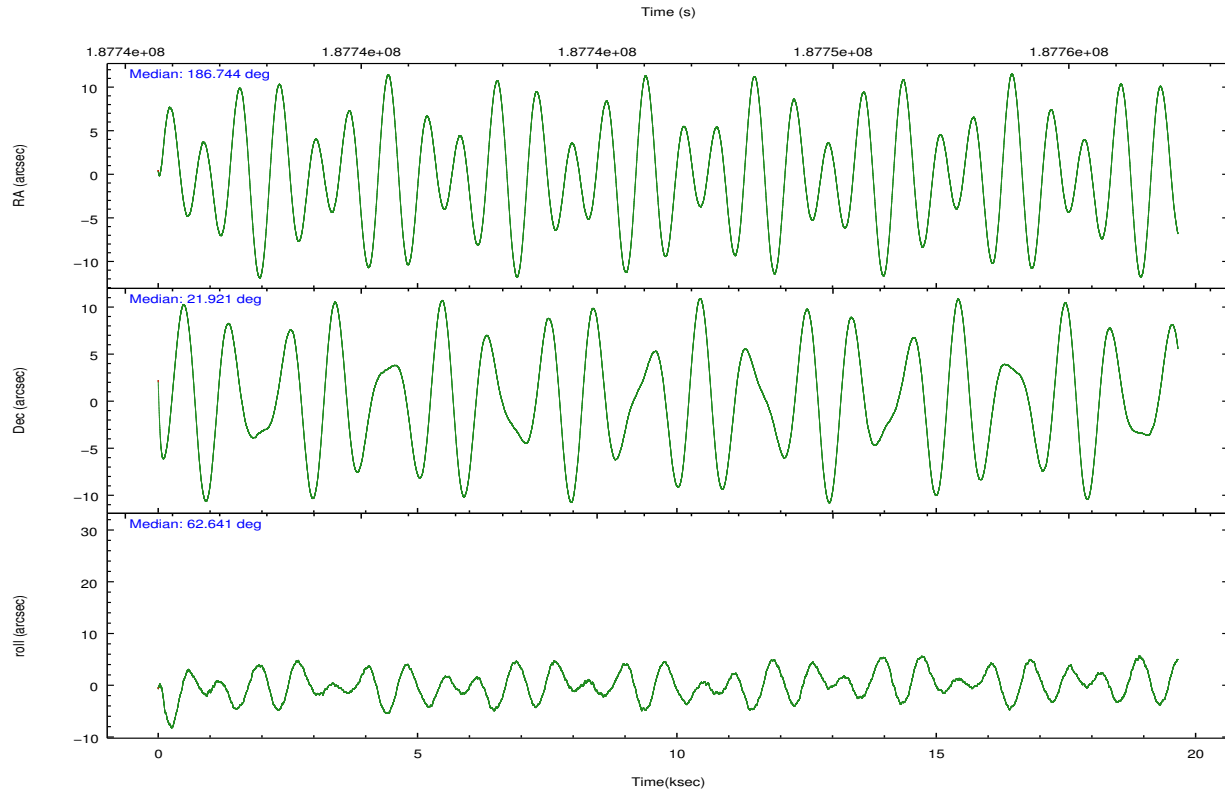
	ccd 0	ccd 1	ccd 2	ccd 3	ccd 6
grade 0 events	3906	4452	4047	5842	3866
	4%	5%	4%	6%	4%
grade 1 events	37	40	51	61	45
	0%	0%	0%	0%	0%
grade 2 events	2246	2295	2195	2182	2036
	2%	2%	2%	2%	2%
grade 3 events	1154	1212	1120	1174	1118
	1%	1%	1%	1%	1%
grade 4 events	1066	1184	1039	1090	1107
	1%	1%	1%	1%	1%
grade 5 events	3307	3675	3140	3546	3782
	3%	4%	3%	3%	4%
grade 6 events	1867	2119	1724	1834	2121
	2%	2%	1%	1%	2%
grade 7 events	72649	71525	81089	77988	79700
	84%	82%	85%	83%	84%

2.2 Compared Parameters

Parameter	Planned	Actual	Parameter	Planned	Actual
Instrument	ACIS	ACIS	Obspar format version number	7	7
Detector	ACIS-01236	ACIS-01236	Obspar file type	PREDICTED	ACTUAL
Grating	NONE	NONE	Obspar update status	NONE	UPDATED
Data mode	VFAINT	VFAINT	Number of optional ACIS chips dropped	0	0
Observation mode	POINTING	POINTING	On-chip summing requested	N	N
[deg] Pointing RA	186.745674	186.7442206802837	Subarray requested	NONE	NONE
[deg] Pointing Dec	21.893555	21.92093591999936	Alternating exposures requested	N	N
[deg] Pointing Roll	62.440934	62.65015916955135	[s] Primary exposure time	0.000000	3.1
[mm] SIM focus pos	-0.782348	-0.7809083437167272			
[mm] SIM defocus	0	0.001439871863259334			
[mm] SIM translation stage pos	-225.840463	-225.8458576473255			
[mm] SIM translation stage offset	-7.752	-7.746595355604228			
[s] Observation start time (MET)	187736832.184000	187735850.59236			
Observation start date	2003-12-13T21:06:08	2003-12-13T20:50:50			
[s] Observation end time (MET)	187756332.184000	187756961.49327			
Observation end date	2003-12-14T02:31:08	2003-12-14T02:42:41			
Read mode	TIMED	TIMED			

2.3 Aspect



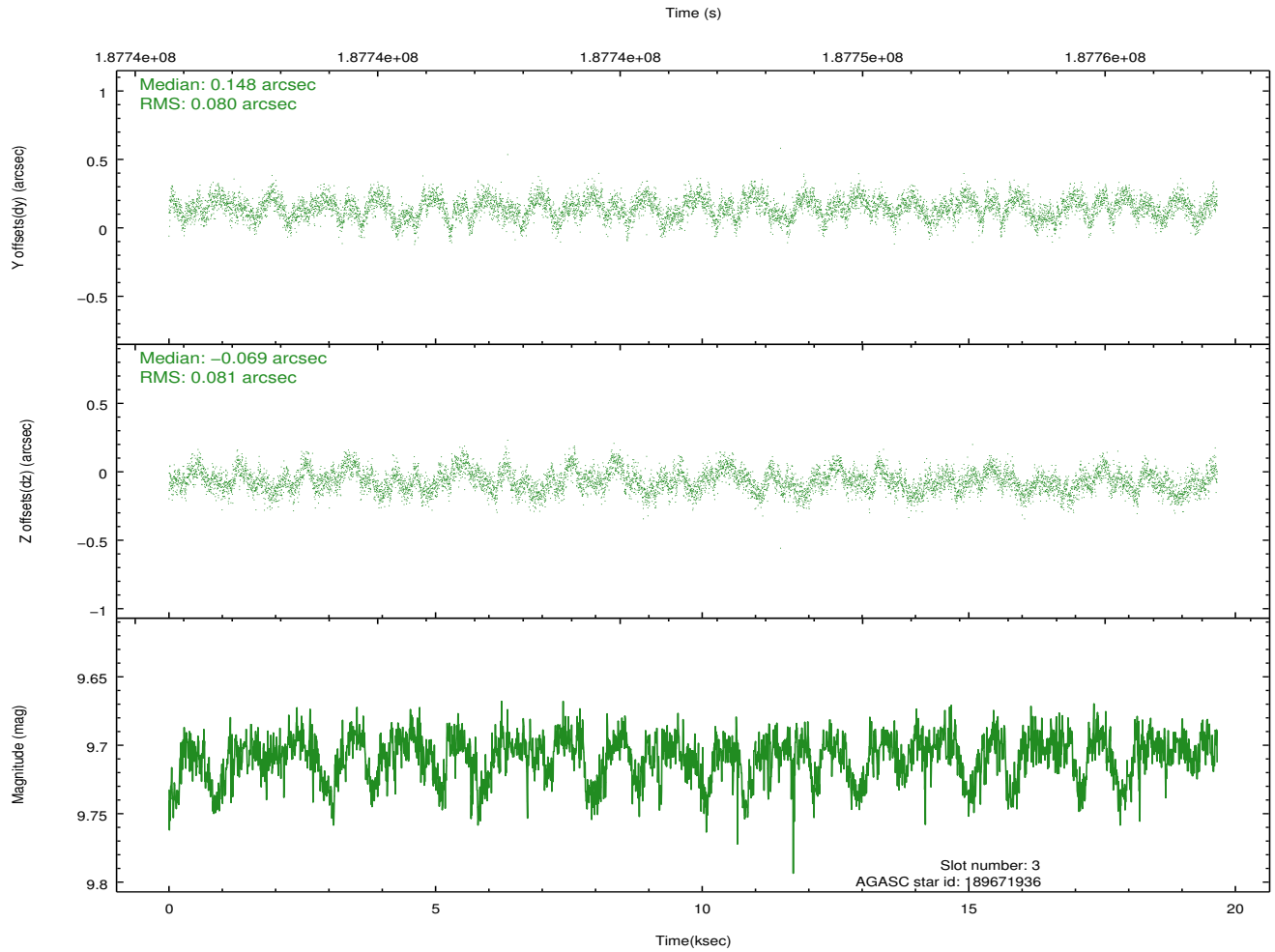
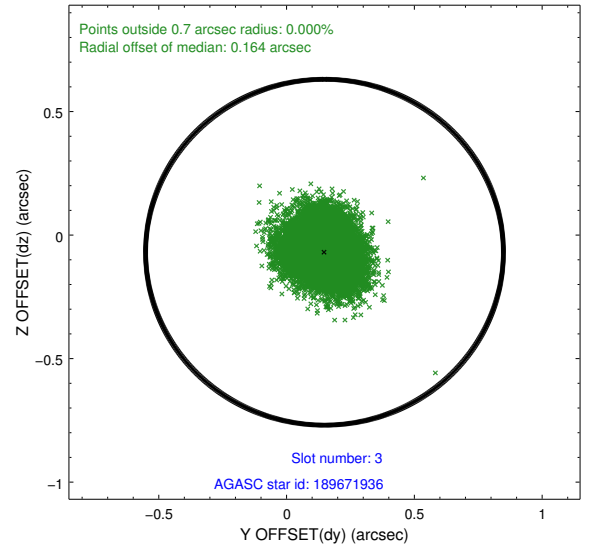
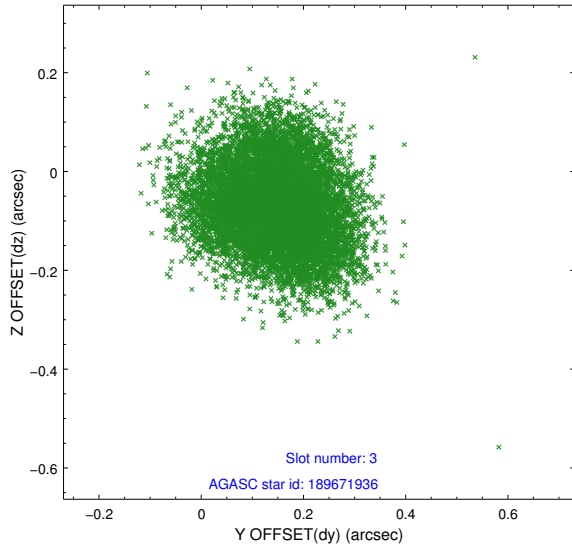


Slot Statistics

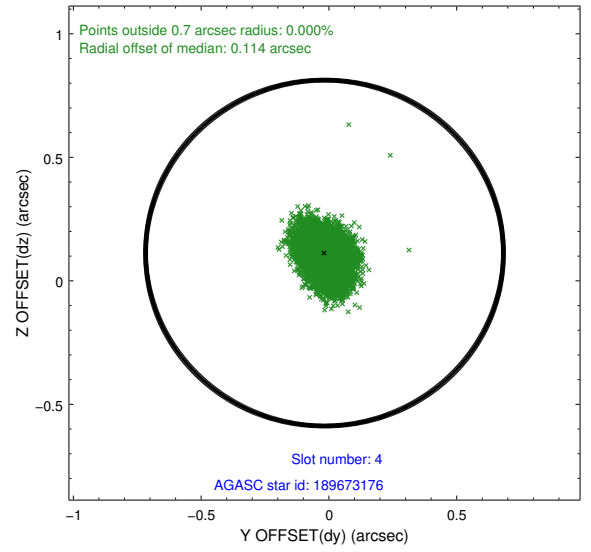
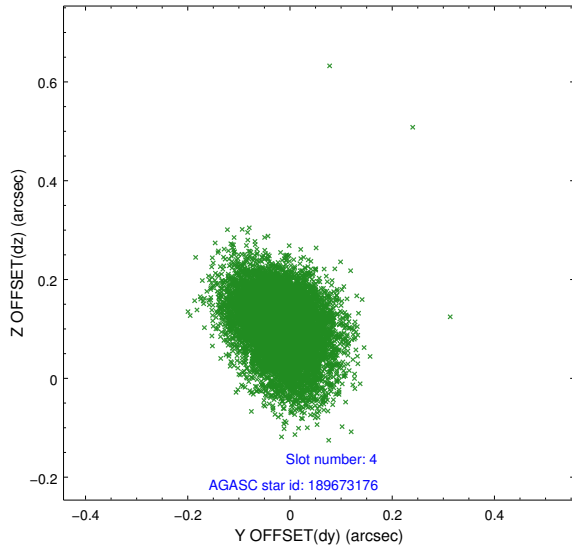
slot	status	id	mag	n_pts	med_dy	med_dz	dr1	dr2	ra	dec	mean_y	mean_z
0	FID	ACIS-I-2	7.17	4789	-0.063	-0.045	0.015	0.026	0.000000	0.000000	-759.59	-997.66
1	FID	ACIS-I-4	7.15	4790	0.062	0.054	0.008	0.014	0.000000	0.000000	2154.43	908.49
2	FID	ACIS-I-5	7.21	4789	-0.101	0.060	0.012	0.019	0.000000	0.000000	-1812.84	905.49
3	GUIDE	189671936	9.71	9584	0.148	-0.069	0.124	0.192	186.395770	21.832299	-735.91	935.15
4	GUIDE	189673176	9.05	9585	-0.017	0.112	0.081	0.138	187.200549	22.003376	1055.11	-1161.53
5	GUIDE	260708840	9.44	9580	-0.117	-0.063	0.086	0.142	186.608655	22.672187	2274.55	1700.80
6	GUIDE	189673464	9.00	9583	0.102	-0.269	0.097	0.152	186.126502	22.164808	-86.03	2283.90
7	GUIDE	189679944	7.64	9584	-0.111	0.293	0.072	0.114	187.582959	21.948245	1475.00	-2382.87

2.4 Star Slots

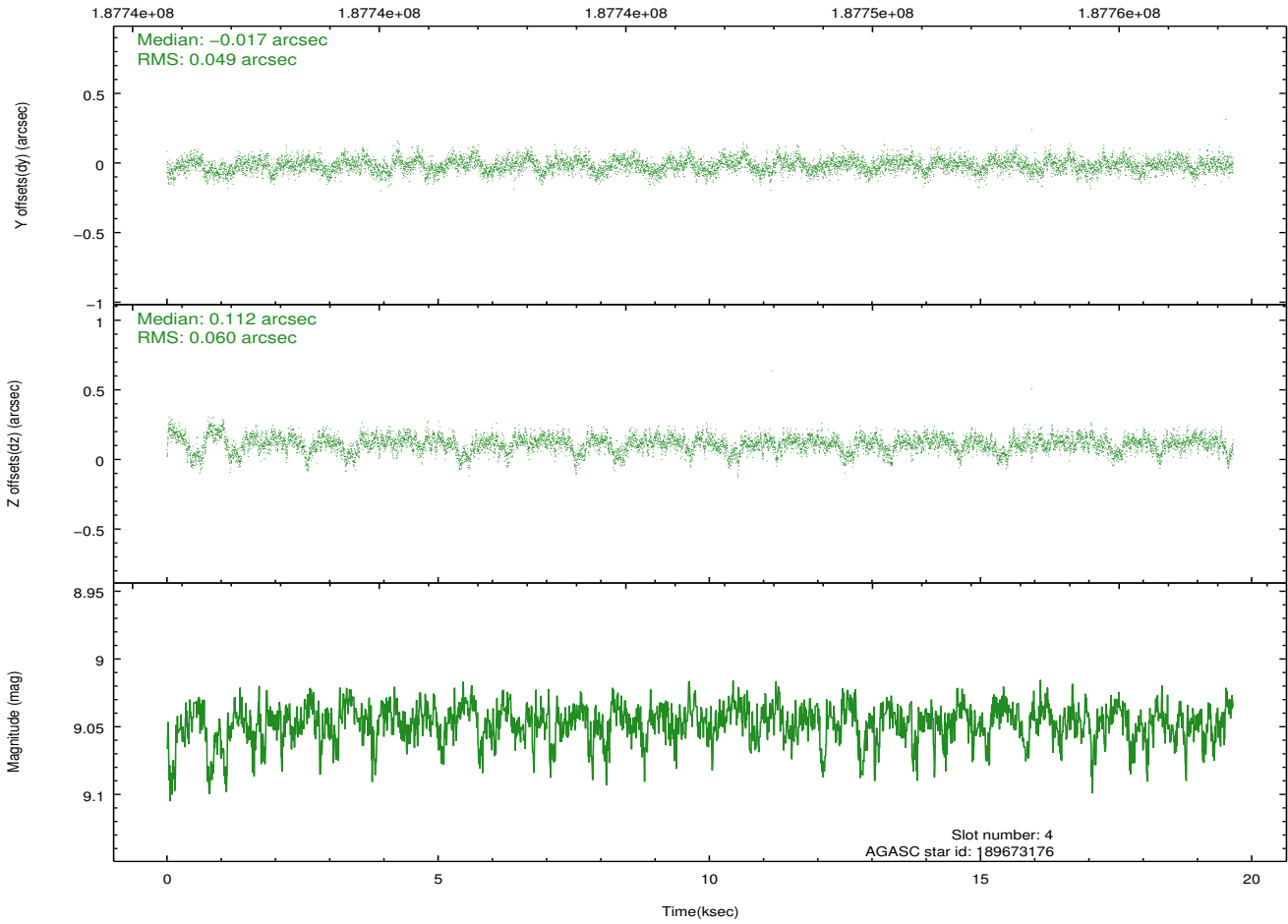
2.4.1 Slot 3



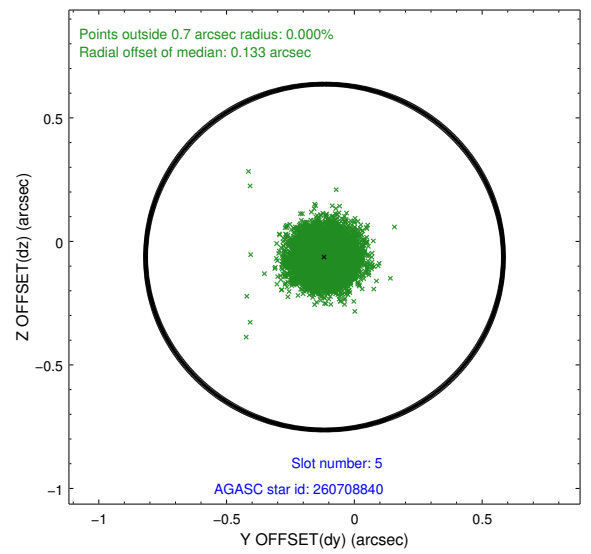
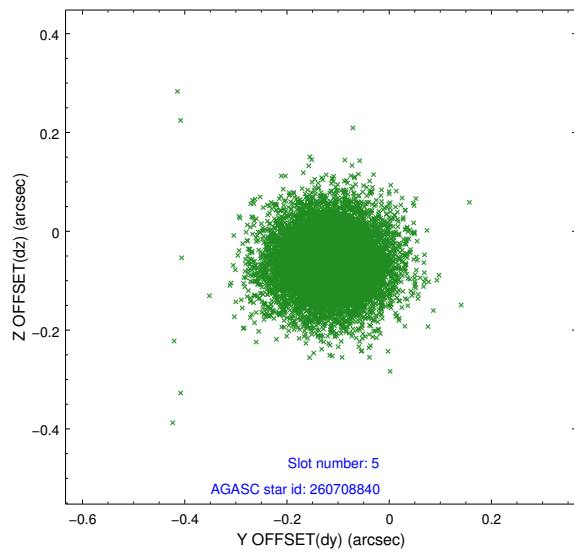
2.4.2 Slot 4



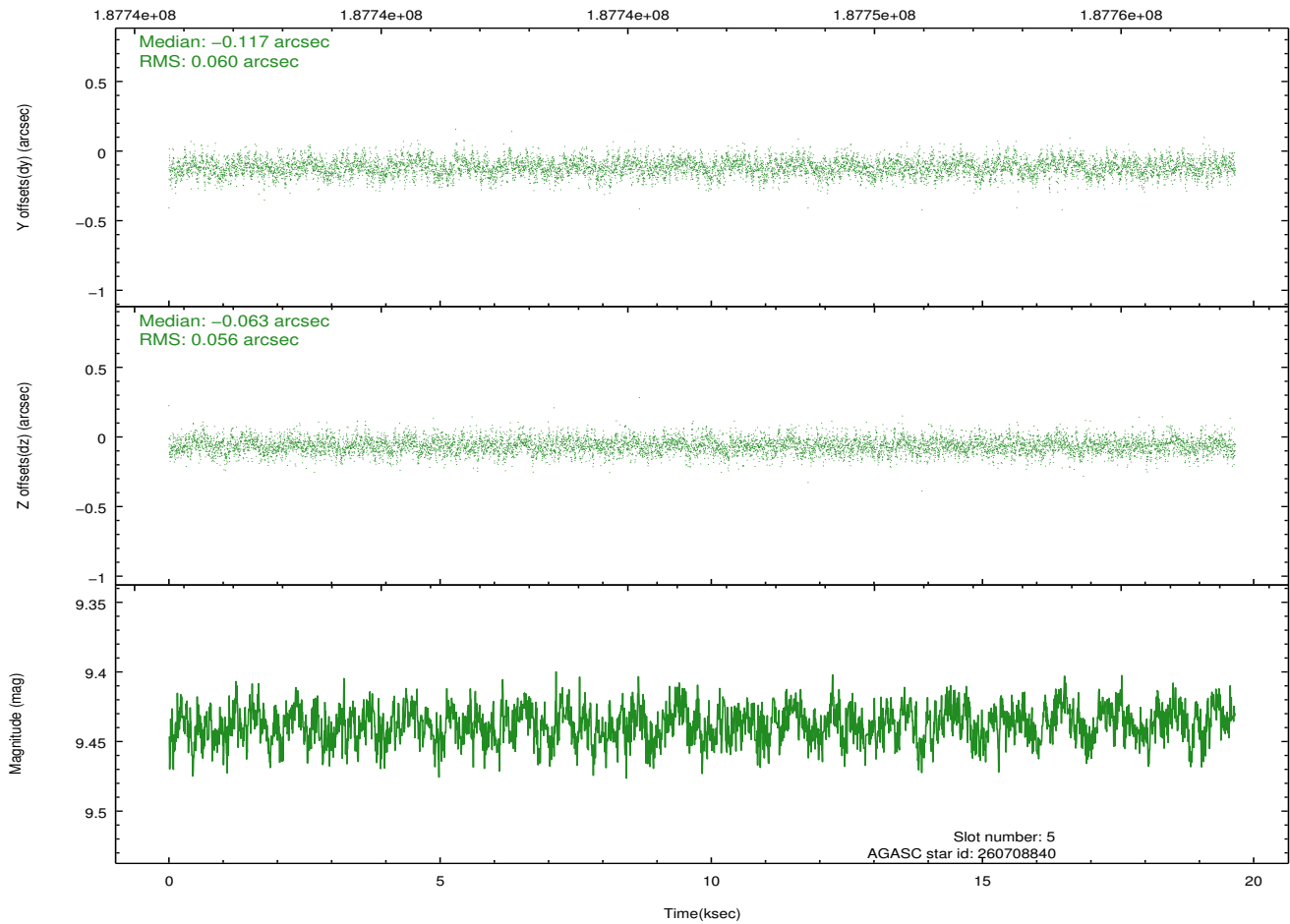
Time (s)



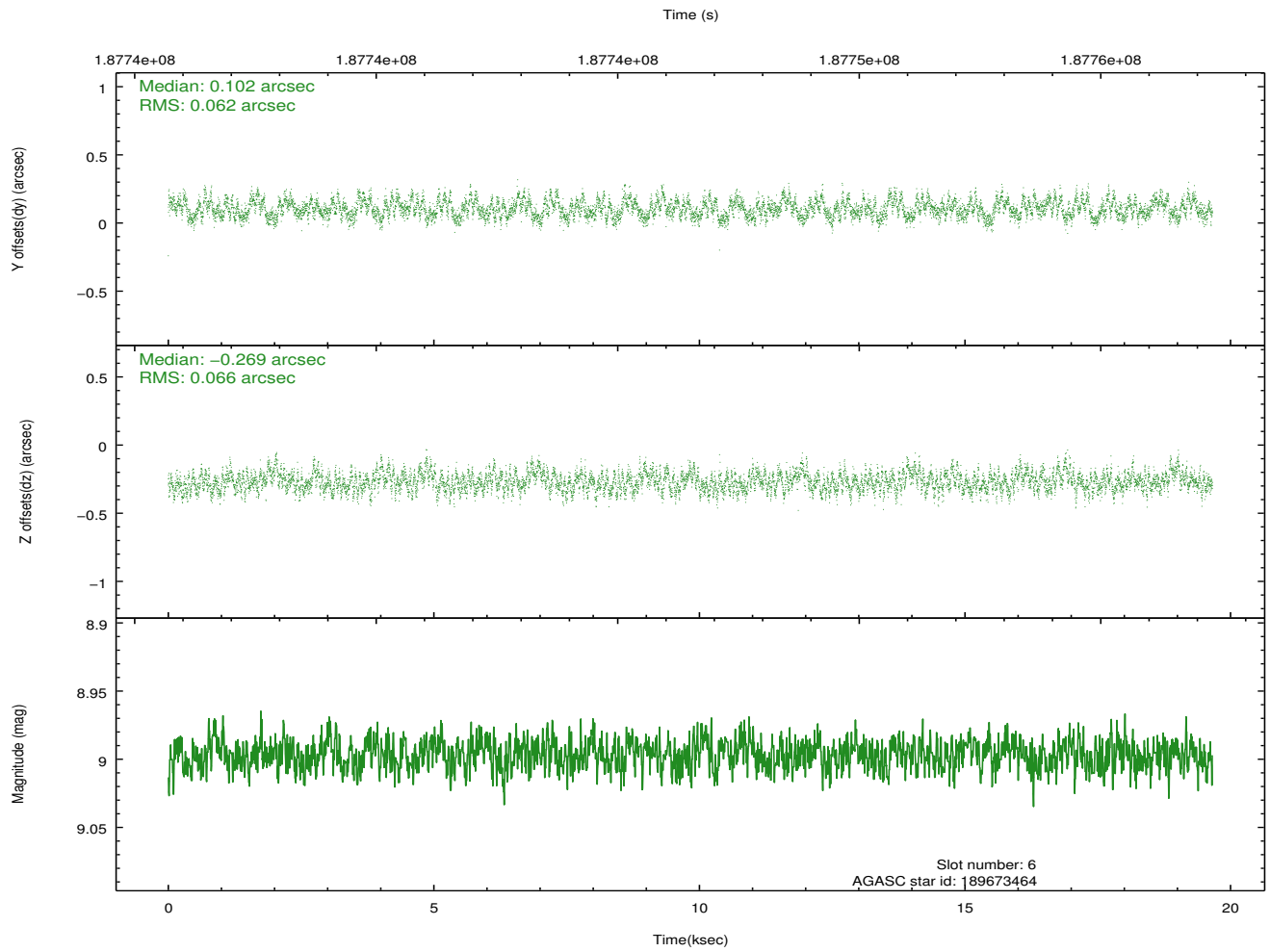
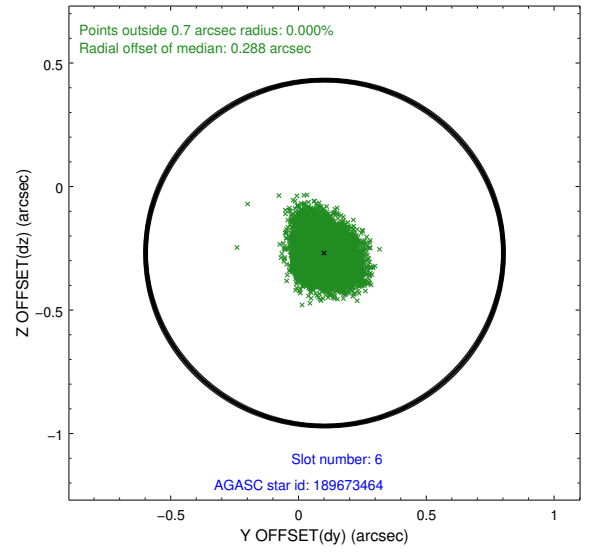
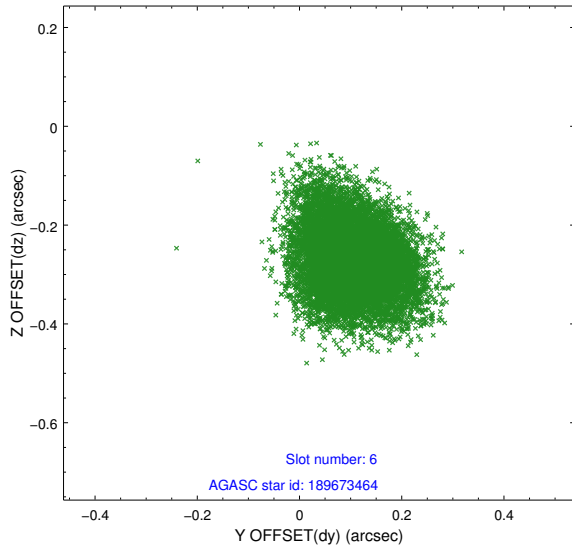
2.4.3 Slot 5



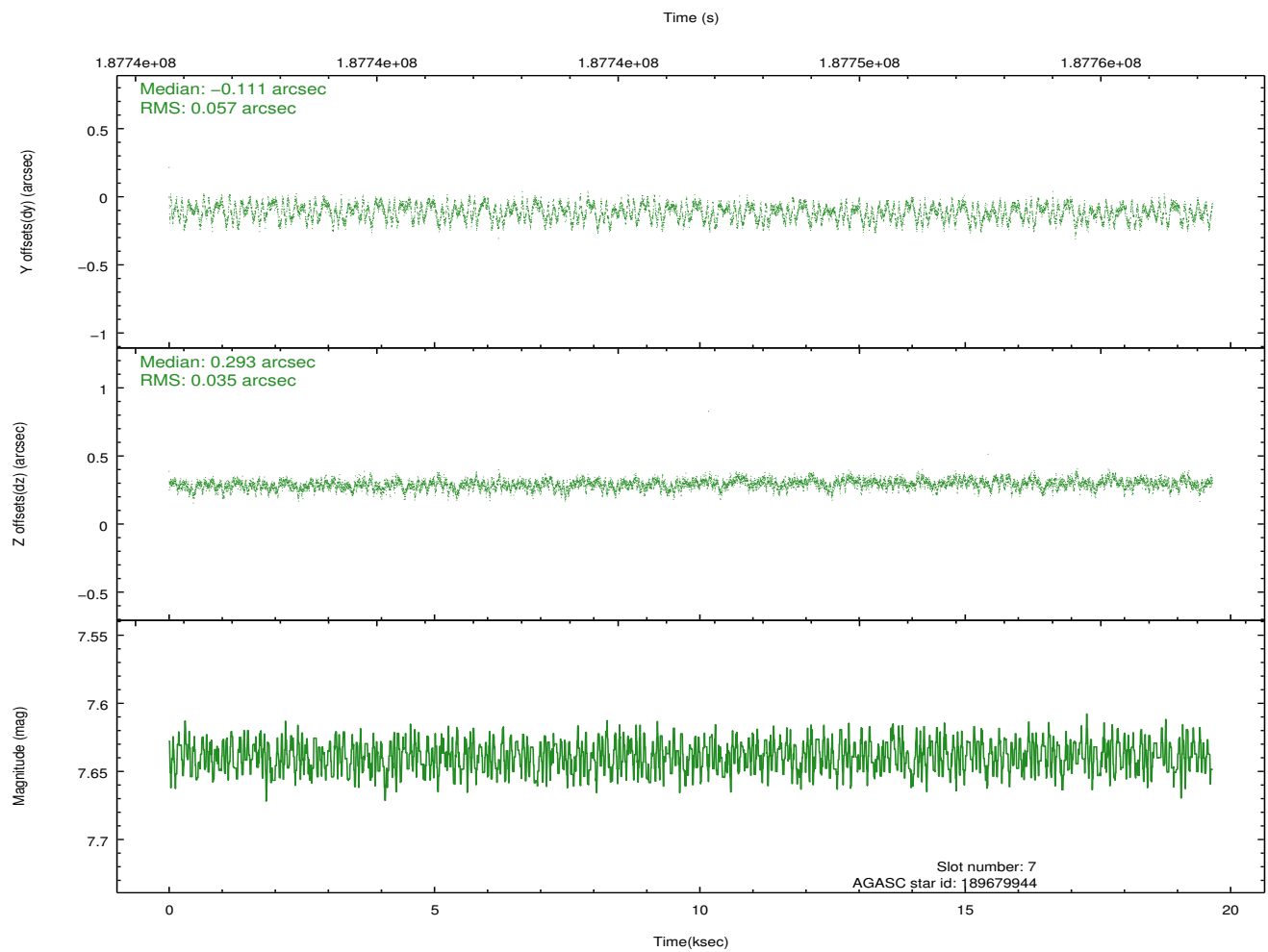
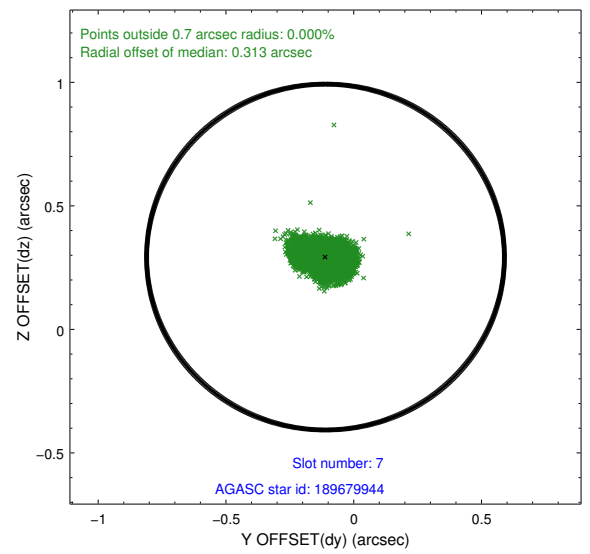
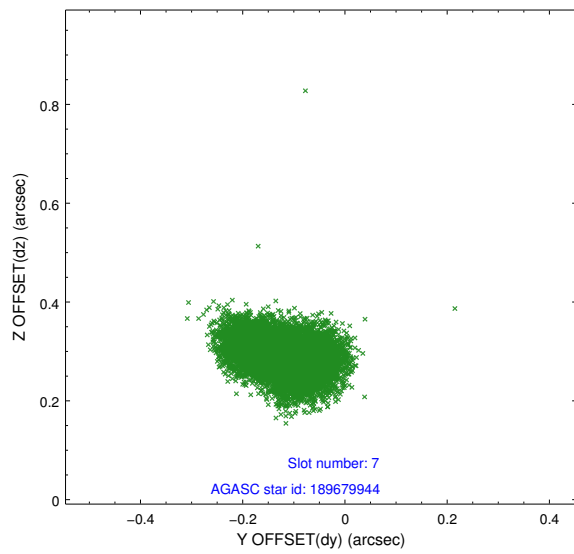
Time (s)



2.4.4 Slot 6

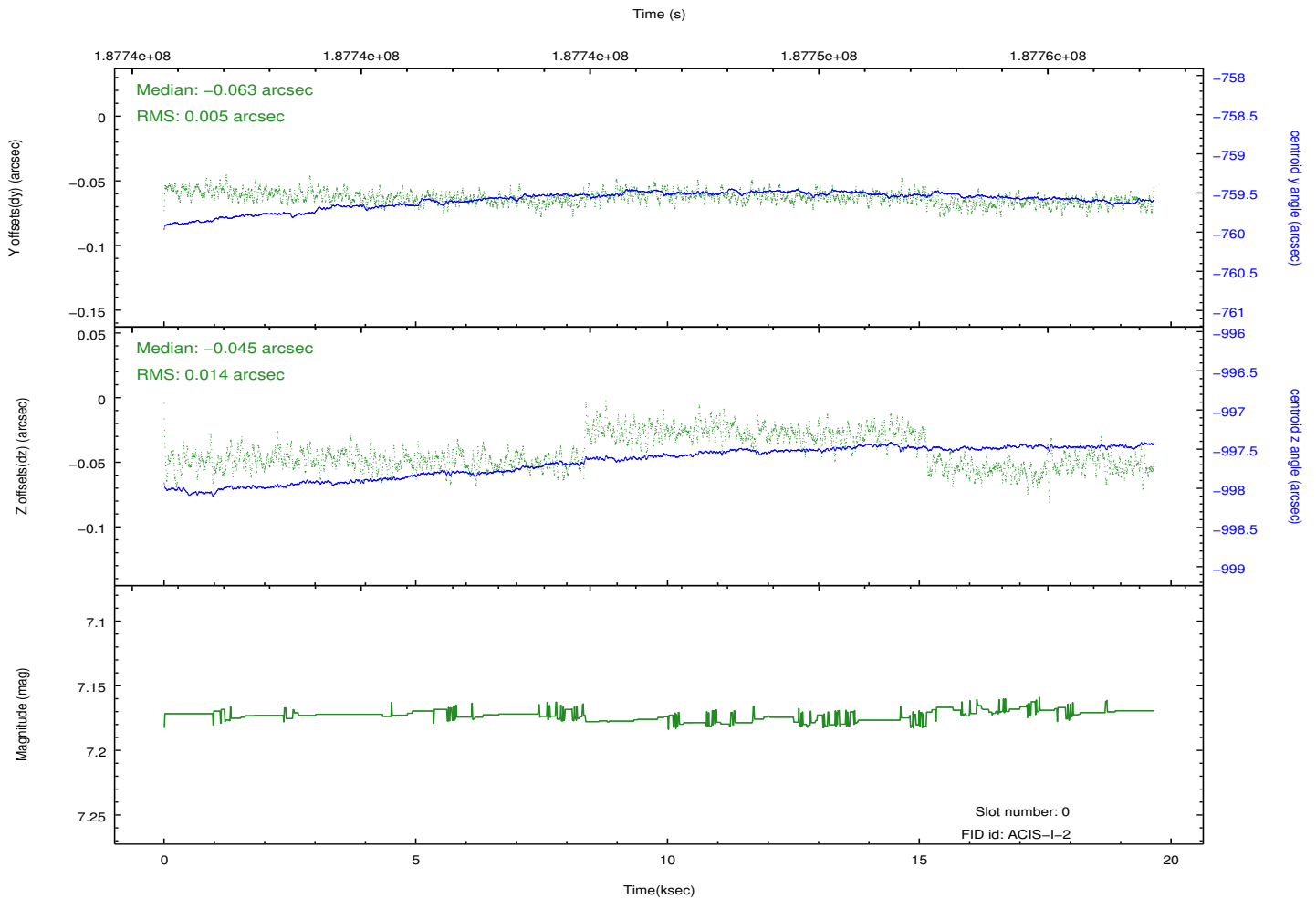
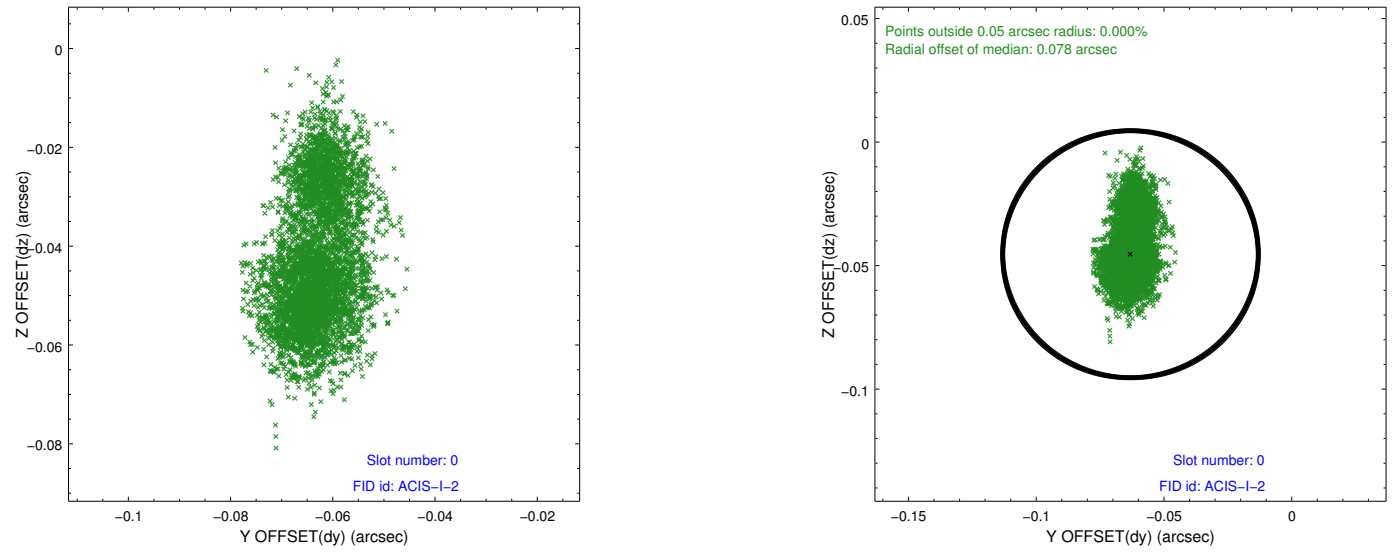


2.4.5 Slot 7

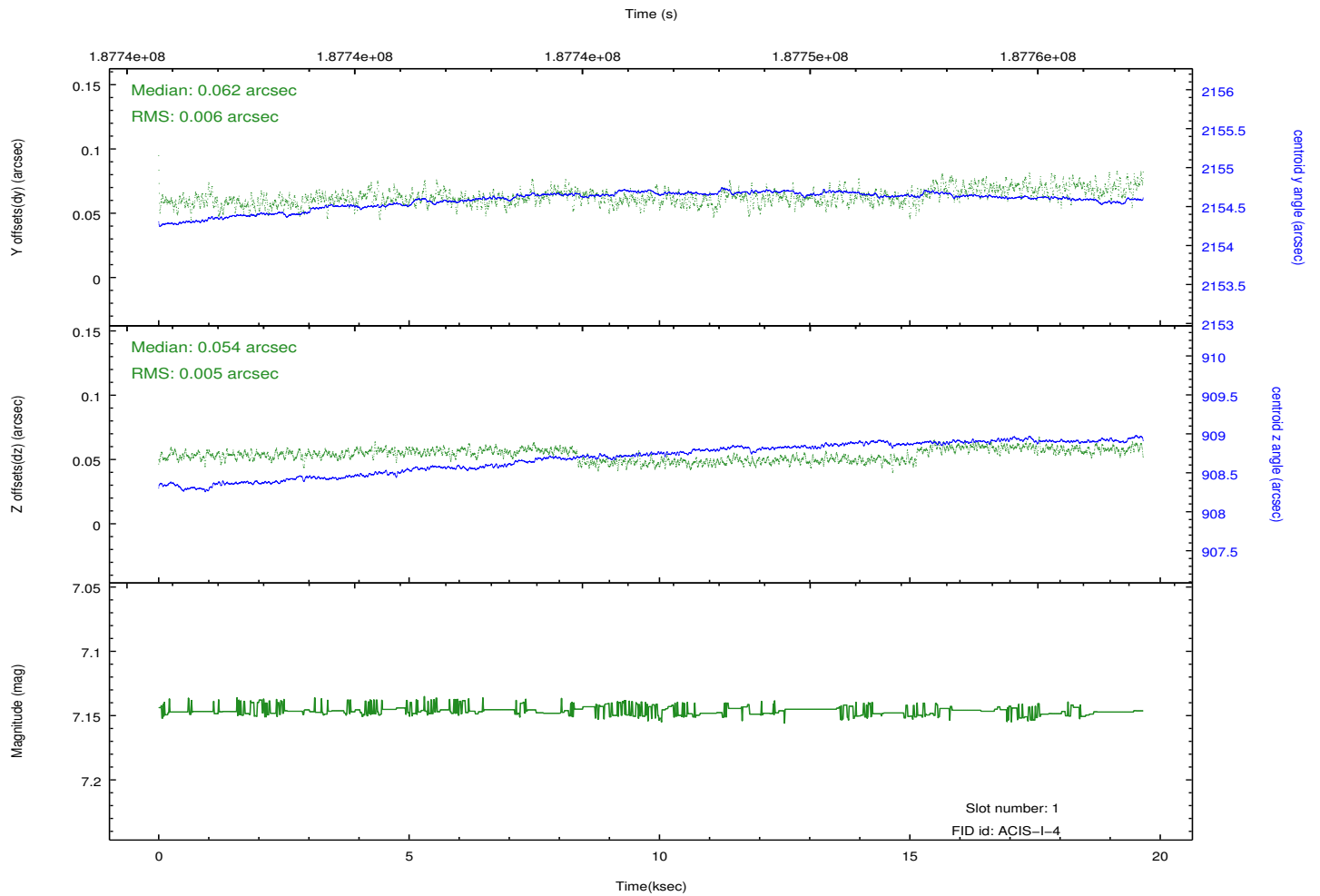
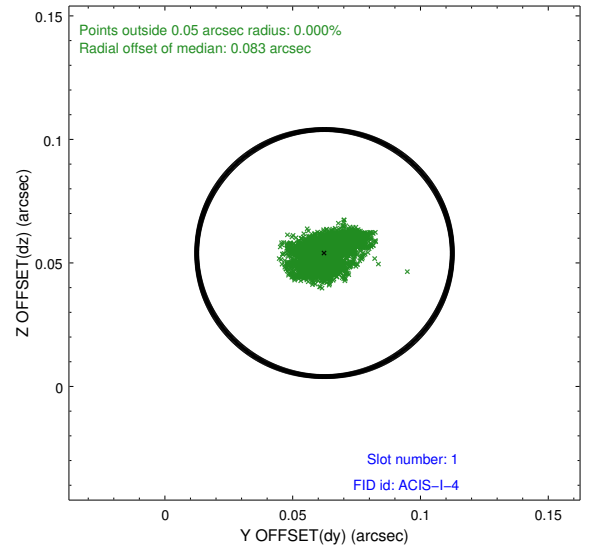
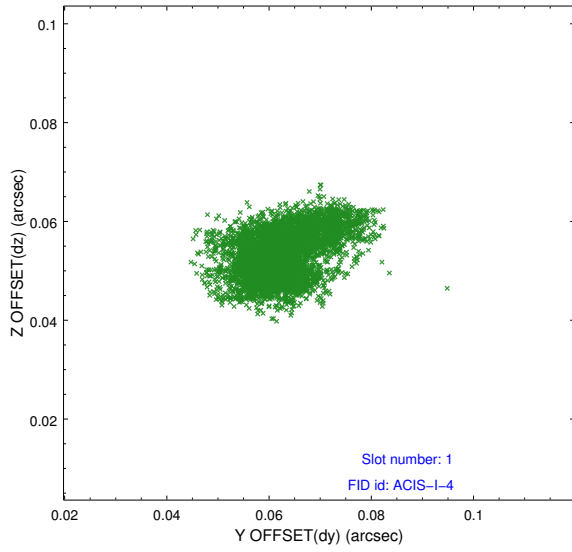


2.5 FID Slots

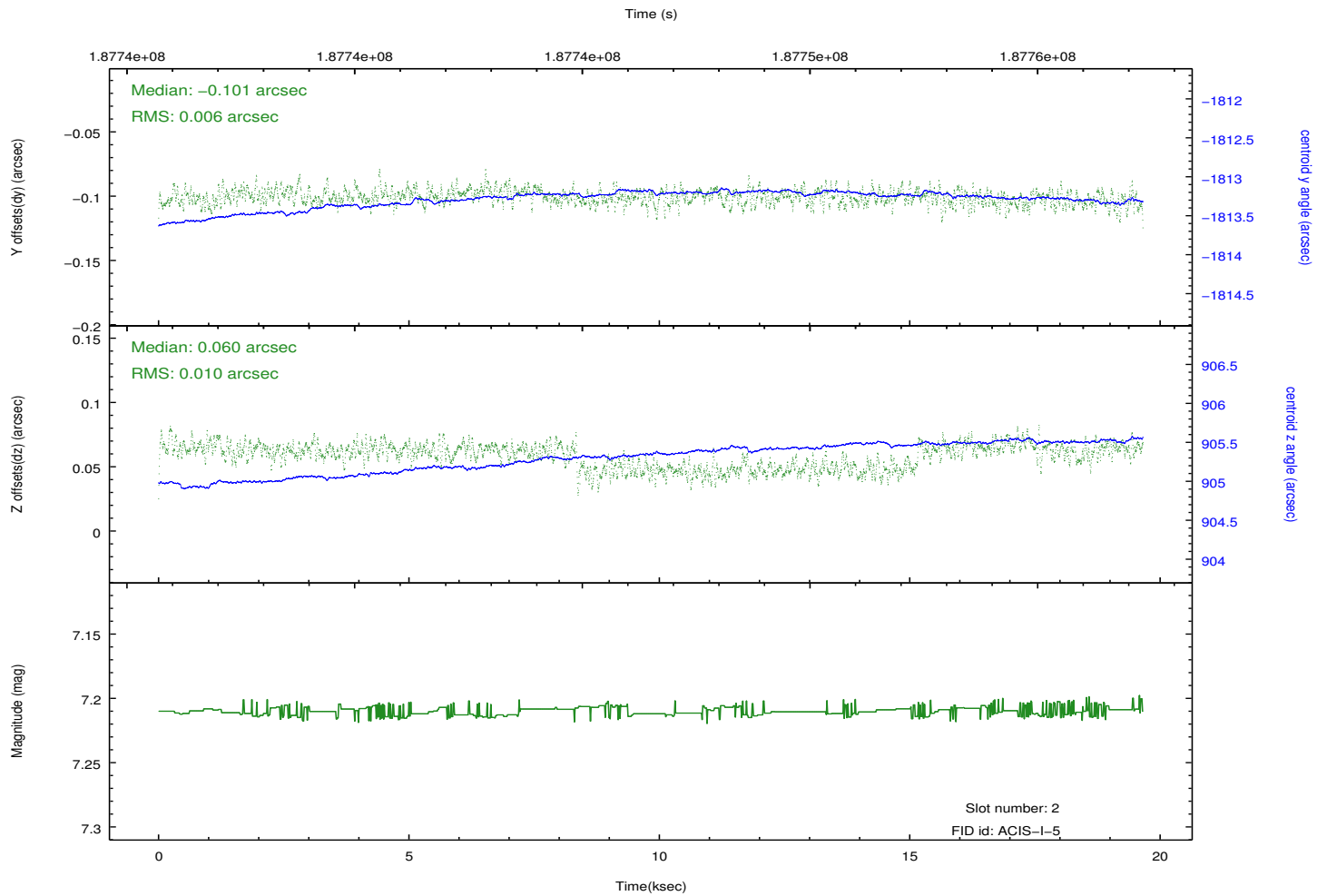
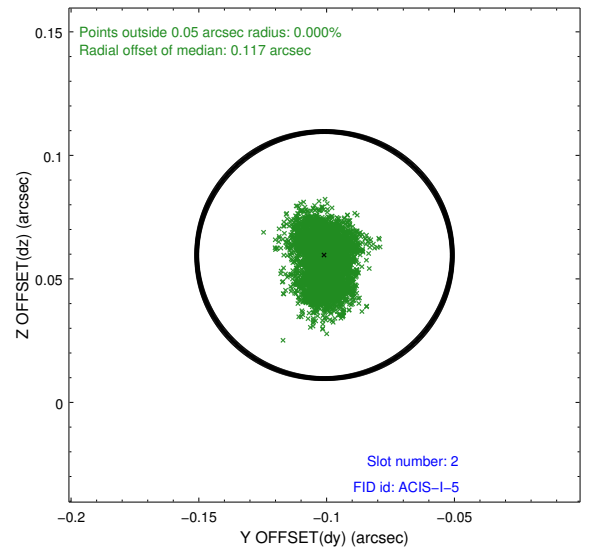
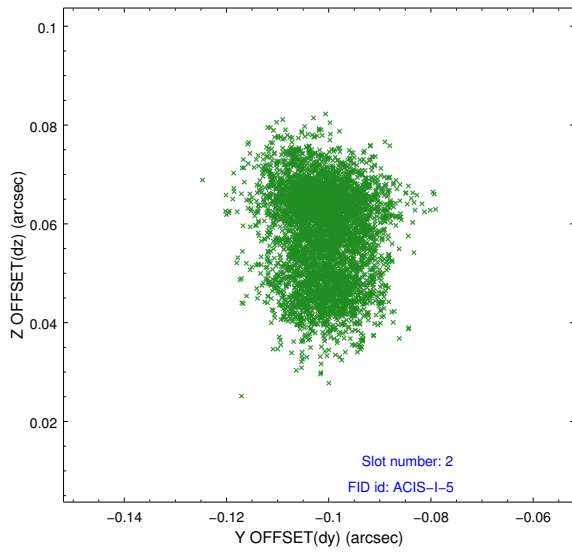
2.5.1 Slot 0



2.5.2 Slot 1



2.5.3 Slot 2



A Summary

A.1 Status

V&V Scientist	Jen Lauer
V&V Date (YYYY-MM-DD)	2012.12.03
V&V Edition	1
V&V Disposition and Status	OK
V&V Charge Time	19.263

A.2 Comments