

V&V Reference Report

L2 ASCDS Version : 8.4.5

Observation 360 - L2 Version 4
Chandra X-Ray Center

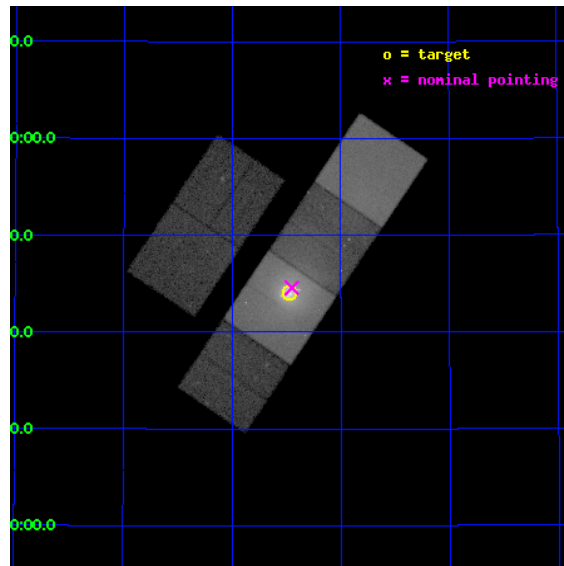
L2 Processing Date : Aug 28 2012

Contents

1	Front	2
2	OBI	3
2.1	OBI	3
2.1.1	Images	3
2.1.2	Bias	3
2.1.3	Parameters	4
2.1.4	Events	4
2.2	Compared Parameters	5
2.3	Aspect	6
2.4	Star Slots	9
2.4.1	Slot 3	9
2.4.2	Slot 4	10
2.4.3	Slot 5	11
2.4.4	Slot 6	12
2.4.5	Slot 7	13
2.5	FID Slots	14
2.5.1	Slot 0	14
2.5.2	Slot 1	15
2.5.3	Slot 2	16
A	Summary	17
A.1	Status	17
A.2	Comments	17

1 Front

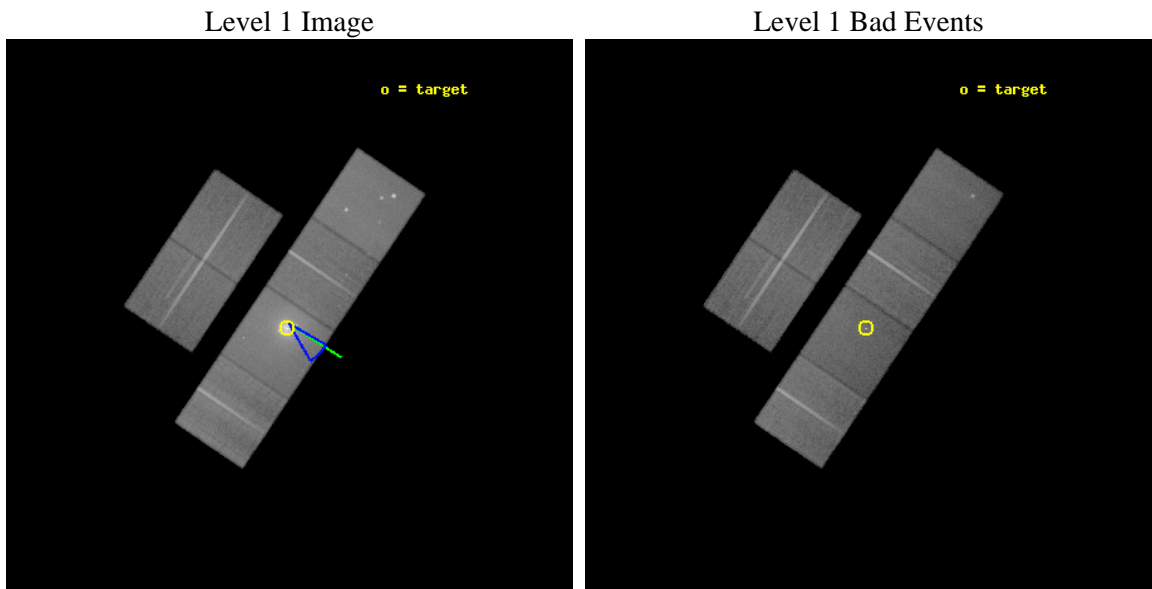
seq_num	700032	Sequence number
obs_id	360	Observation id
title	STUDIES OF RADIO JETS AND THE NARROW LINE REGIONS	Proposal title
observer	Professor Andrew Wilson	Principal investigator
object	CYGNUS A	Source name
dtycycle	0	
cycle	P	events from which exps? Prim/Second/Both
ra_targ	299.867917	Observer's specified target RA [deg]
dec_targ	40.733889	Observer's specified target Dec [deg]
ra_nom	299.86269650938	Nominal RA [deg]
dec_nom	40.743070044027	Nominal Dec [deg]
roll_nom	123.93972705308	Nominal Roll [deg]
revision	4	Processing version of data
ontime	35164.800032735	Sum of GTIs [s]
livetime	34719.52216102	Livetime [s]
ontime2	35164.800032735	Sum of GTIs [s]
ontime3	35164.800032735	Sum of GTIs [s]
ontime5	35164.800032735	Sum of GTIs [s]
ontime6	35161.559042573	Sum of GTIs [s]
ontime7	35164.800032735	Sum of GTIs [s]
ontime8	35164.800032735	Sum of GTIs [s]
l2events	682759	Number of level 2 events



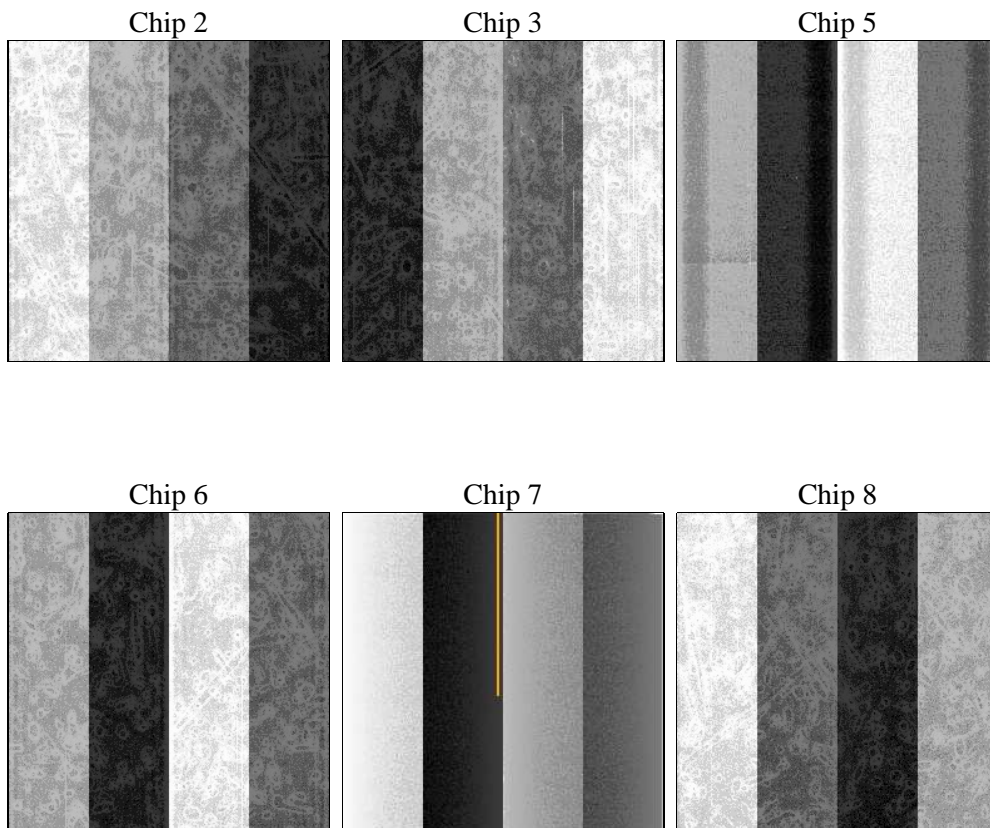
2 OBI

2.1 OBI

2.1.1 Images



2.1.2 Bias



2.1.3 Parameters

obi_num	1	Obi number	sched_exp_time	35000.000000	[s] Scheduled observation exposure time
ascdsver	8.4.5	Processing system revision	ontime	35164.800032735	Sum of GTIs [s]
caldbver	4.5.1.1	 	ontime2	35164.800032735	Sum of GTIs [s]
date	2012-08-28T05:56:08	Date and time of file creation	ontime3	35164.800032735	Sum of GTIs [s]
revision	4	Processing version of data	ontime5	35164.800032735	Sum of GTIs [s]
			ontime6	35161.559042573	Sum of GTIs [s]
			ontime7	35164.800032735	Sum of GTIs [s]
			ontime8	35164.800032735	Sum of GTIs [s]
			l1events	1995553	Number of level 1 events

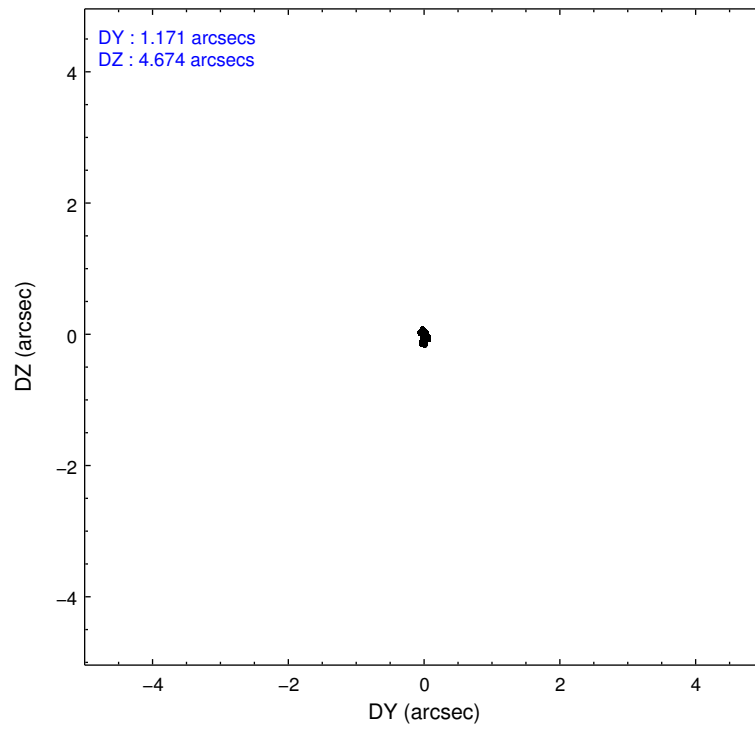
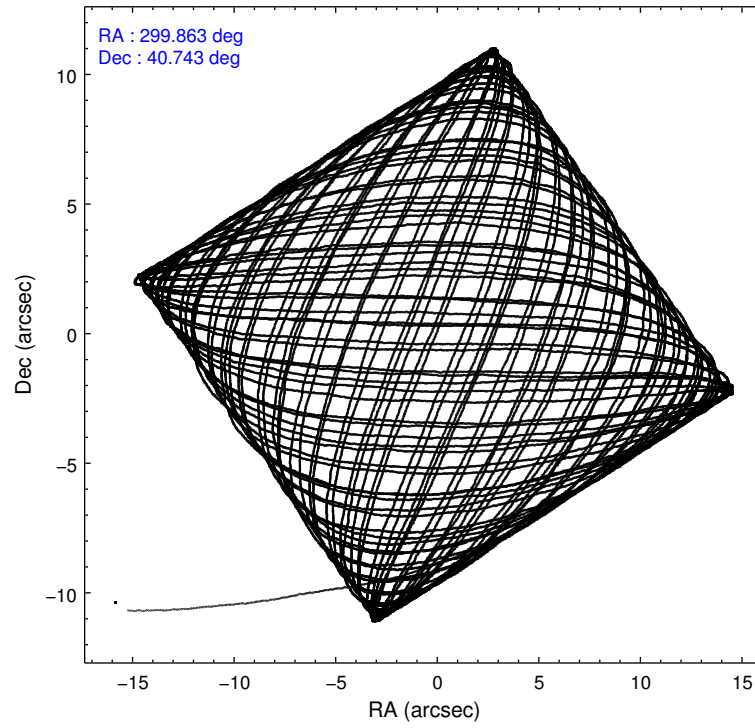
2.1.4 Events

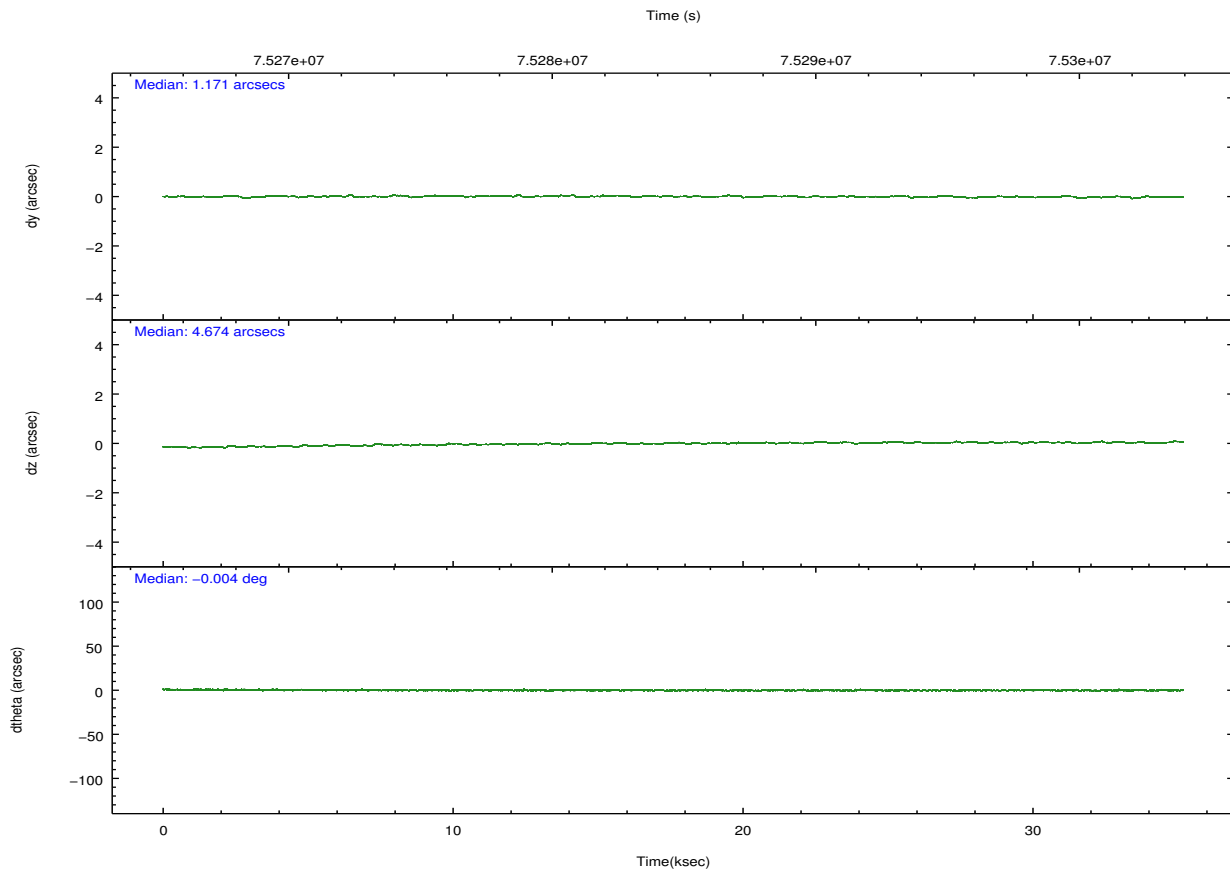
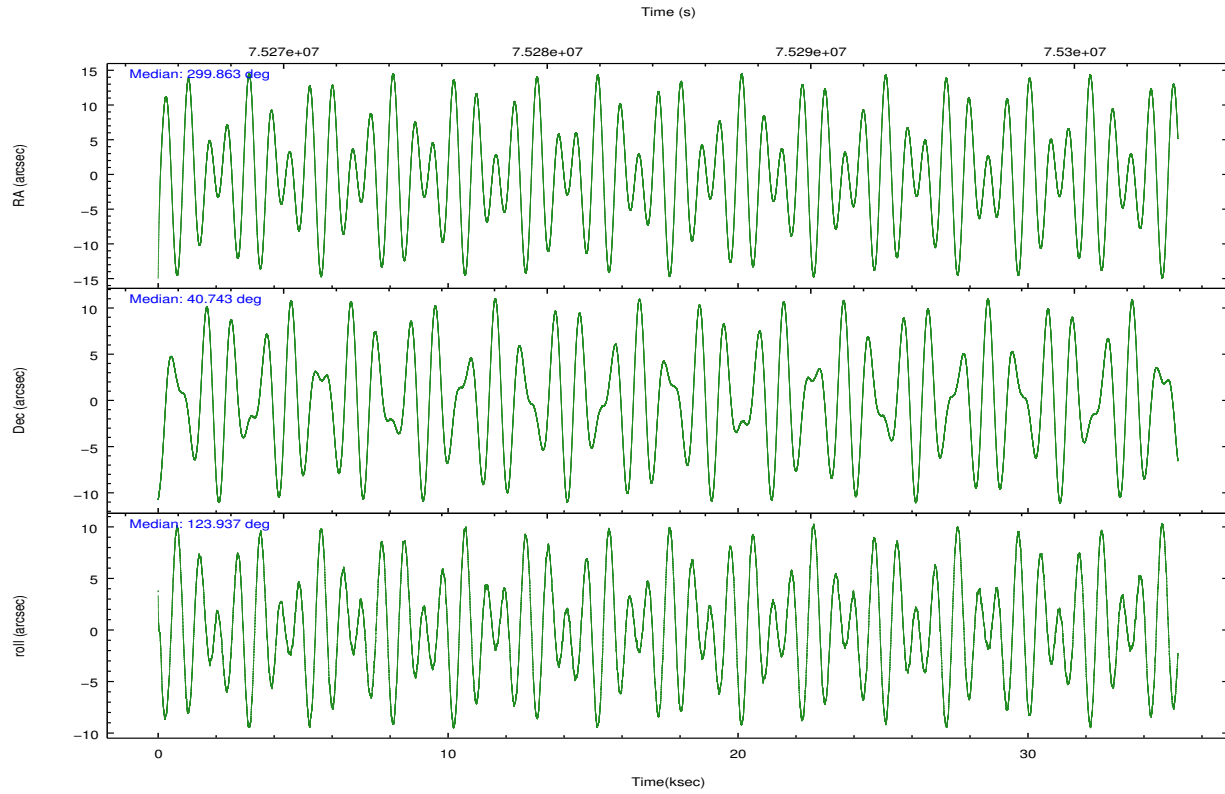
	ccd 2	ccd 3	ccd 5	ccd 6	ccd 7	ccd 8		ccd 2	ccd 3	ccd 5	ccd 6	ccd 7	ccd 8
level 1 events	252291	242312	344597	295571	531726	329056	grade 0 events	16668	15597	31792	52608	77602	31068
rejected events	218667	210495	168068	216333	165855	245282		6%	6%	9%	17%	14%	9%
rejected %	86%	86%	48%	73%	31%	74%	grade 1 events	144	106	1534	231	526	268
								0%	0%	0%	0%	0%	0%
							grade 2 events	6735	6015	49645	11325	87869	14826
								2%	2%	14%	3%	16%	4%
							grade 3 events	2669	2712	9255	4376	40342	11009
								1%	1%	2%	1%	7%	3%
							grade 4 events	2753	2646	8938	4245	39185	9974
								1%	1%	2%	1%	7%	3%
							grade 5 events	7412	7983	24335	9202	29102	11424
								2%	3%	7%	3%	5%	3%
							grade 6 events	4865	4905	77211	6854	121538	17017
								1%	2%	22%	2%	22%	5%
							grade 7 events	211045	202348	141887	206730	135562	233470
								83%	83%	41%	69%	25%	70%

2.2 Compared Parameters

Parameter	Planned	Actual	Parameter	Planned	Actual
Instrument	ACIS	ACIS	Obspar format version number	7	7
Detector	ACIS-235678	ACIS-235678	Obspar file type	PREDICTED	ACTUAL
Grating	NONE	NONE	Obspar update status	NONE	UPDATED
Data mode	FAINT	FAINT	Number of optional ACIS chips dropped	0	0
Observation mode	POINTING	POINTING	On-chip summing requested	N	N
[deg] Pointing RA	299.895257	299.8626965093788	Subarray requested	NONE	NONE
[deg] Pointing Dec	40.731103	40.7430700440265	Alternating exposures requested	N	N
[deg] Pointing Roll	123.761852	123.9397270530766	[s] Primary exposure time	0.000000	3.2
[deg] Roll angle	135.000000	135.000000			
[deg] Roll tolerance	15.000000	15.000000			
Roll constraint allows 180D rotation	N	N			
[mm] SIM focus pos	-0.684267	-0.6828225247311905			
[mm] SIM defocus	0	0.001444936568705701			
[mm] SIM translation stage pos	-190.132523	-190.1400660498719			
[mm] SIM translation stage offset	0	0.00754346686406393			
[s] Observation start time (MET)	75267171.184000	75266010.334737			
Observation start date	2000-05-21T03:31:47	2000-05-21T03:13:30			
[s] Observation end time (MET)	75302171.184000	75302755.561087			
Observation end date	2000-05-21T13:15:07	2000-05-21T13:25:55			
Read mode	TIMED	TIMED			

2.3 Aspect



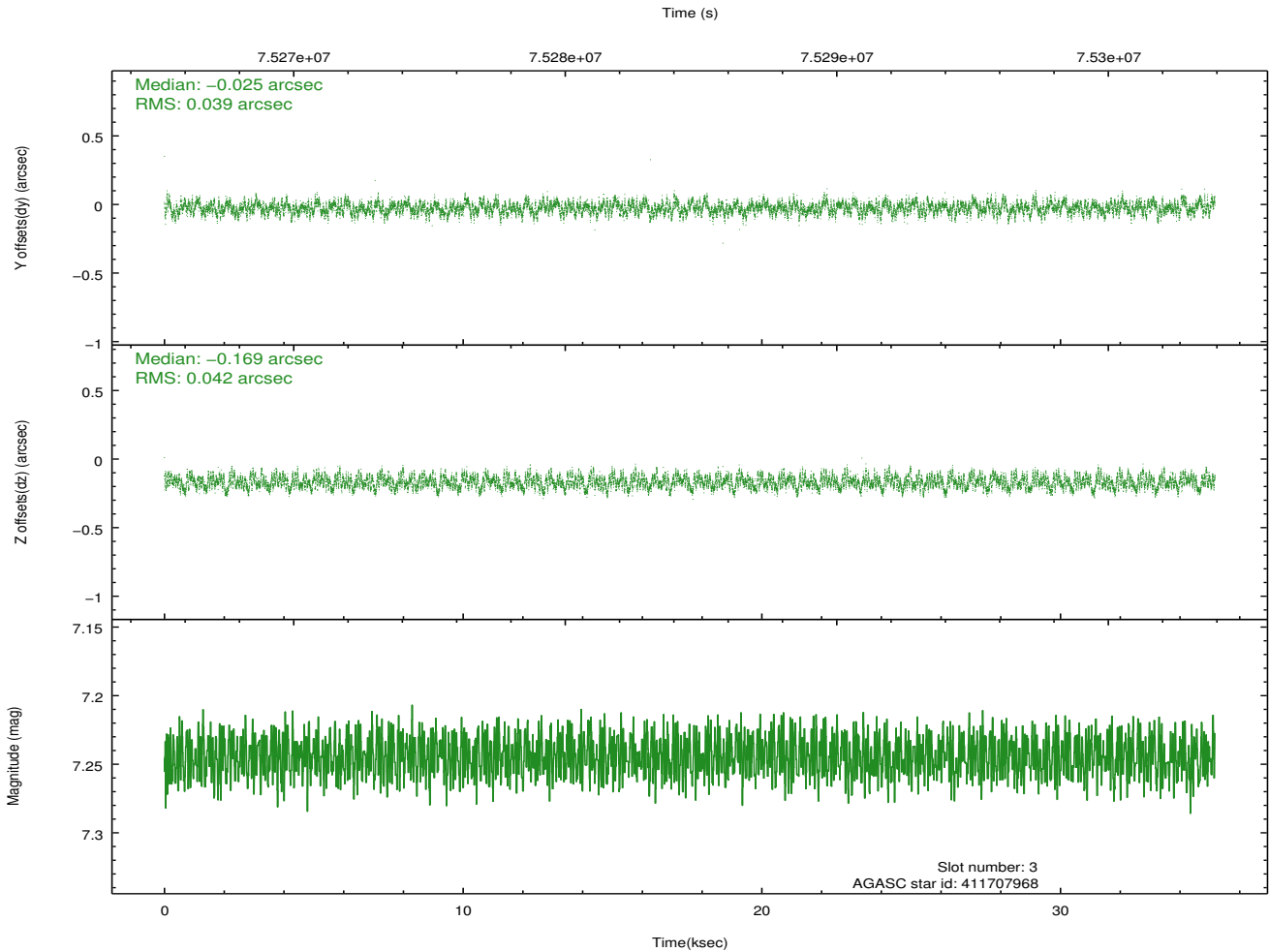
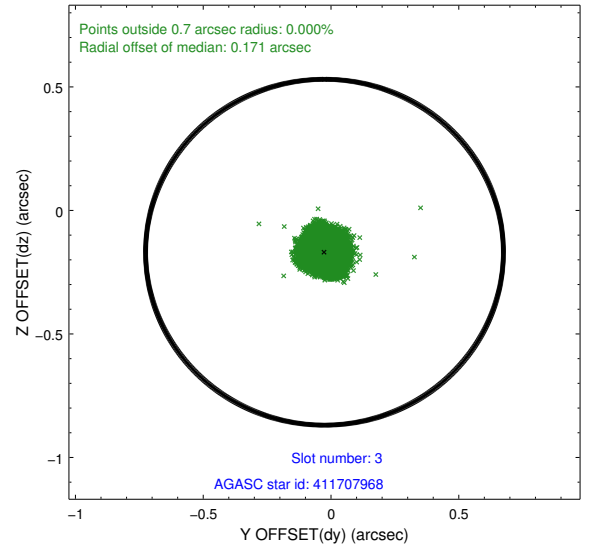
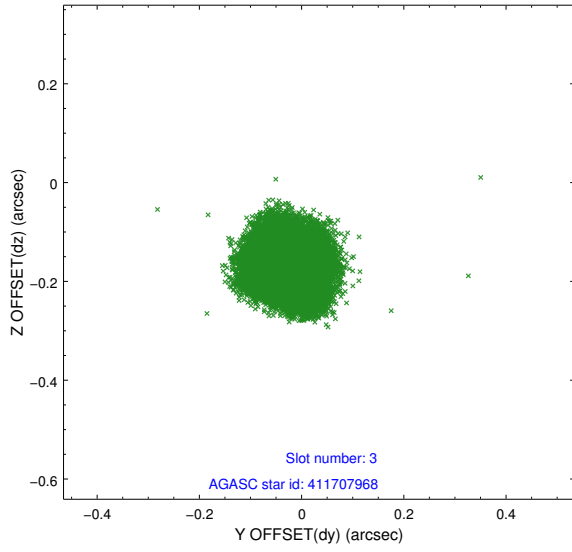


Slot Statistics

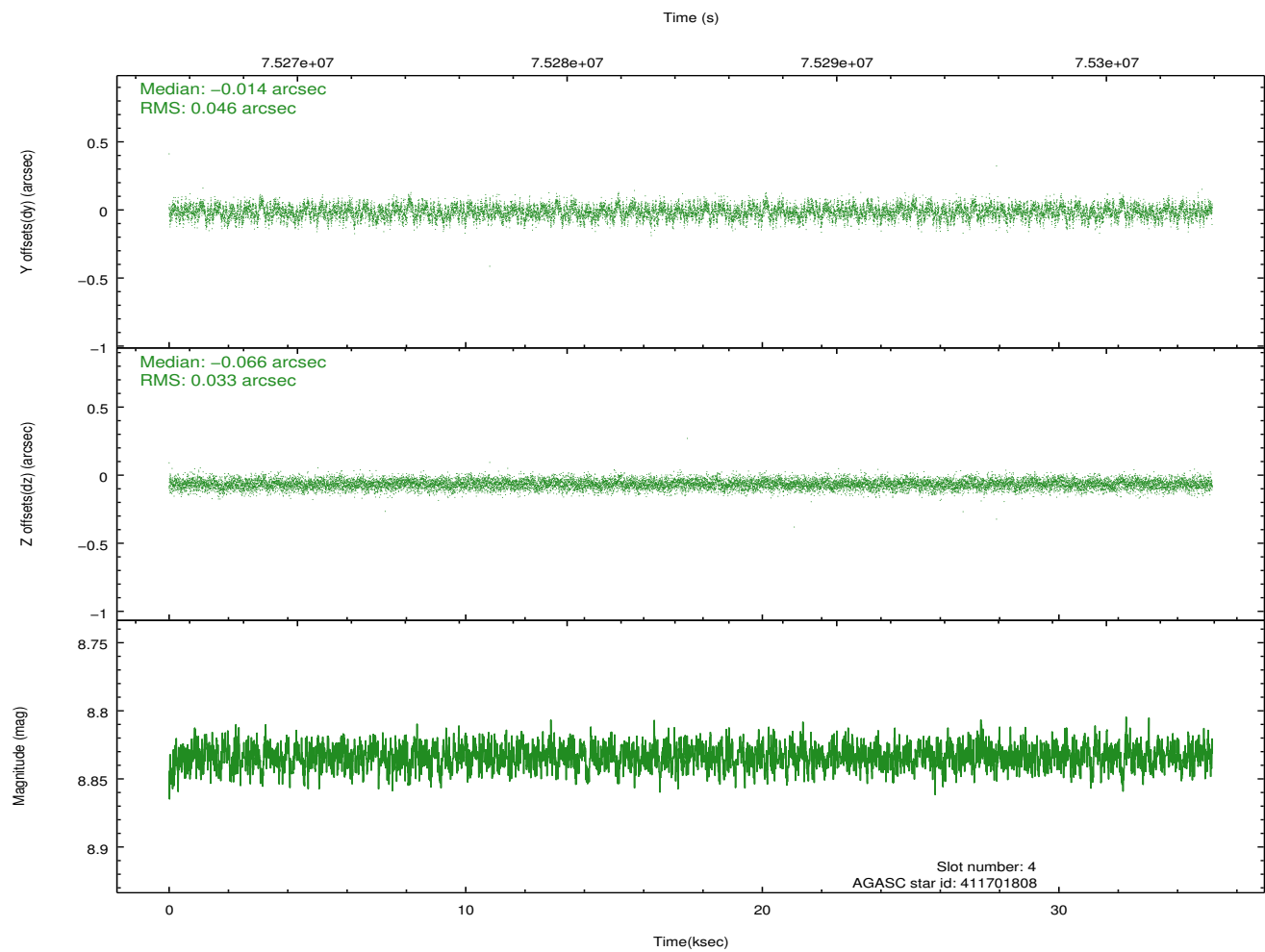
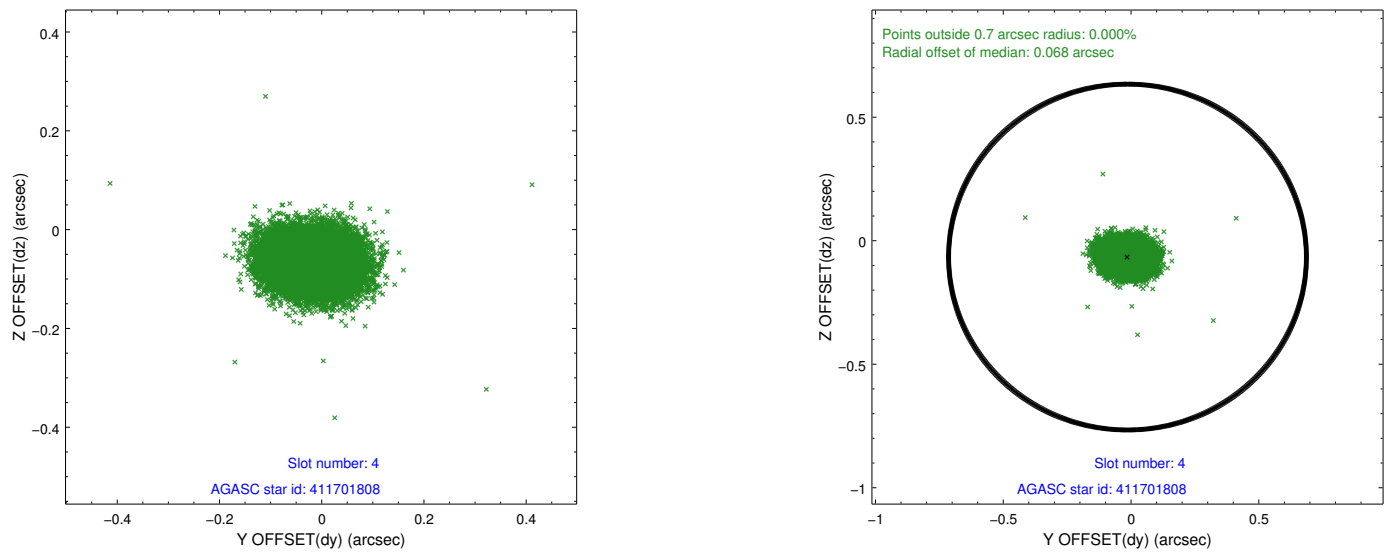
slot	status	id	mag	n_pts	med_dy	med_dz	dr1	dr2	ra	dec	mean_y	mean_z
0	FID	ACIS-S-2	7.11	8579	-0.029	-0.008	0.007	0.011	0.000000	0.000000	-753.79	-1725.76
1	FID	ACIS-S-4	7.21	8578	0.002	0.016	0.006	0.010	0.000000	0.000000	2159.50	182.70
2	FID	ACIS-S-5	7.23	8578	-0.004	0.001	0.007	0.011	0.000000	0.000000	-1806.56	176.41
3	GUIDE	411707968	7.24	17158	-0.025	-0.169	0.063	0.095	299.509933	40.926839	1169.81	478.30
4	GUIDE	411701808	8.83	17154	-0.014	-0.066	0.060	0.098	299.419536	40.880184	1168.40	776.27
5	GUIDE	411701312	8.71	17152	-0.244	-0.013	0.064	0.101	298.889956	40.820220	1801.25	2089.99
6	GUIDE	413426288	9.28	17152	0.249	0.045	0.071	0.115	300.490389	40.285080	-2238.55	-469.43
7	GUIDE	413414968	9.56	17144	0.033	0.205	0.091	0.145	300.952591	40.709216	-1654.94	-2364.54

2.4 Star Slots

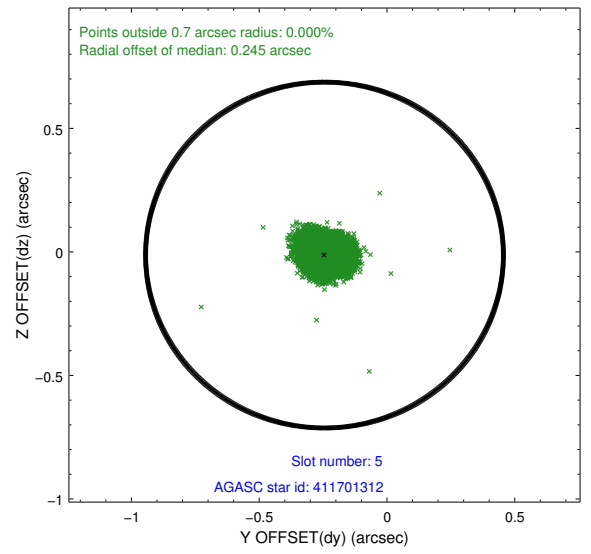
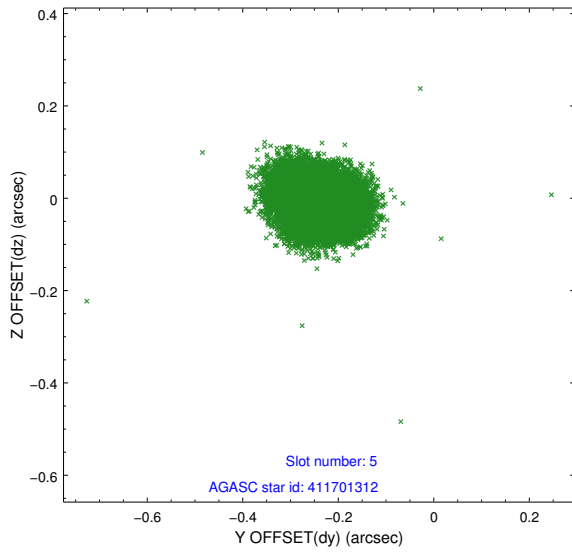
2.4.1 Slot 3



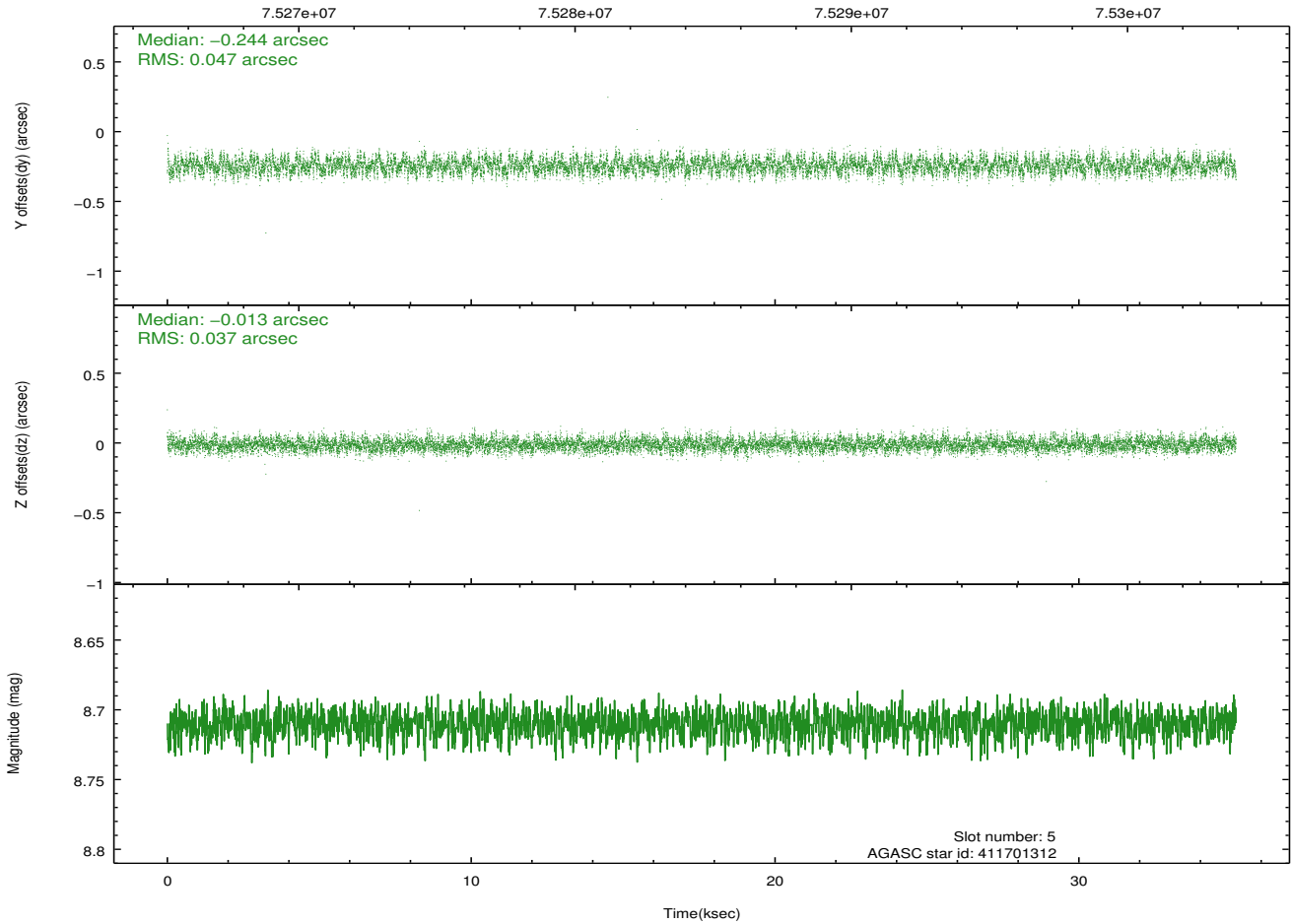
2.4.2 Slot 4



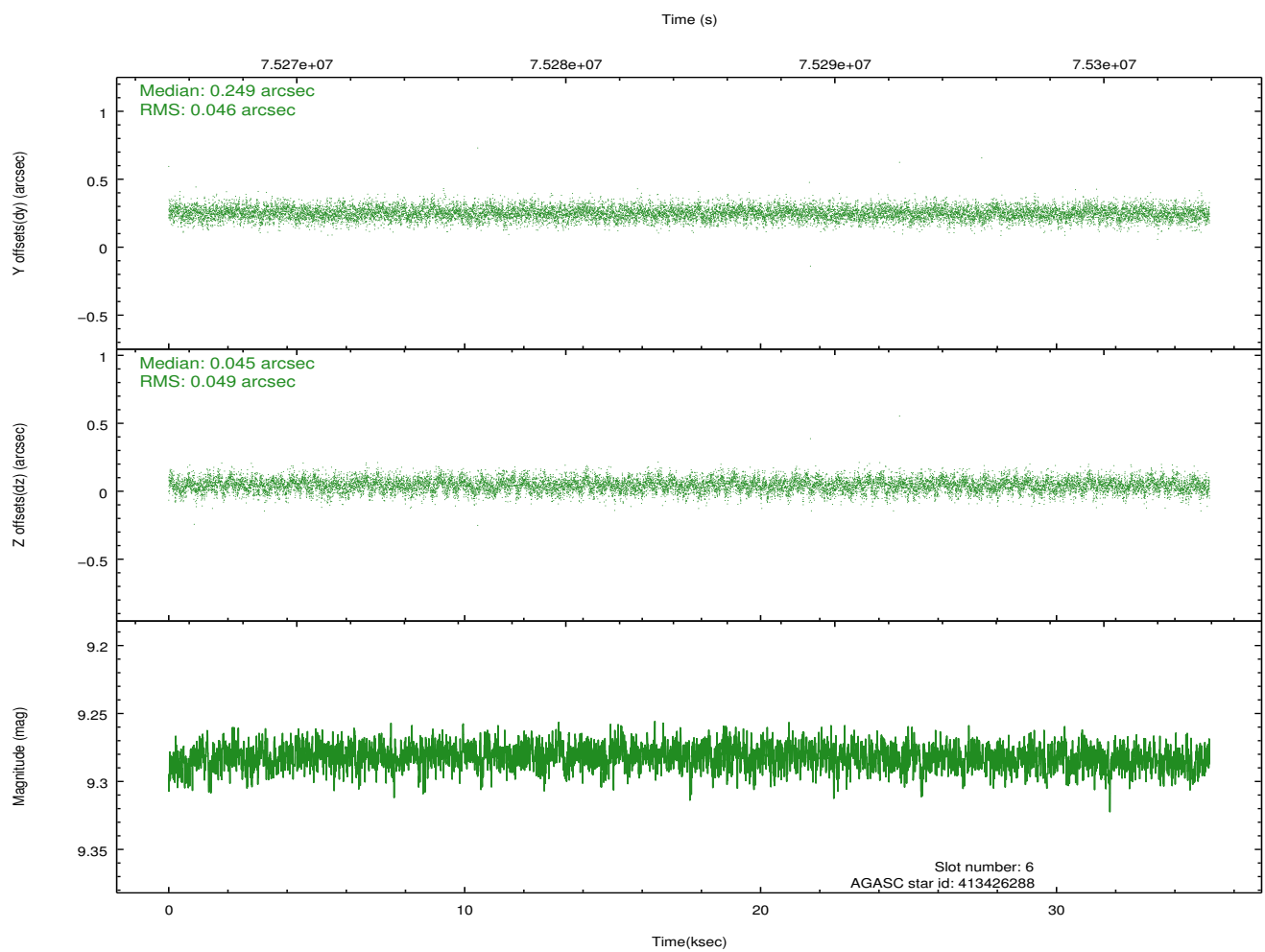
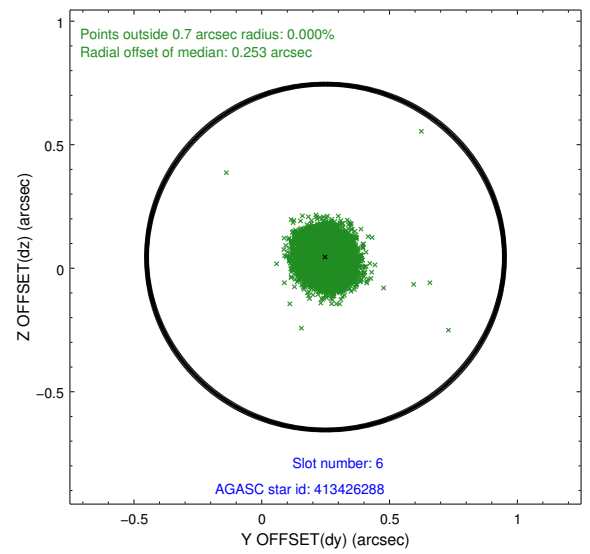
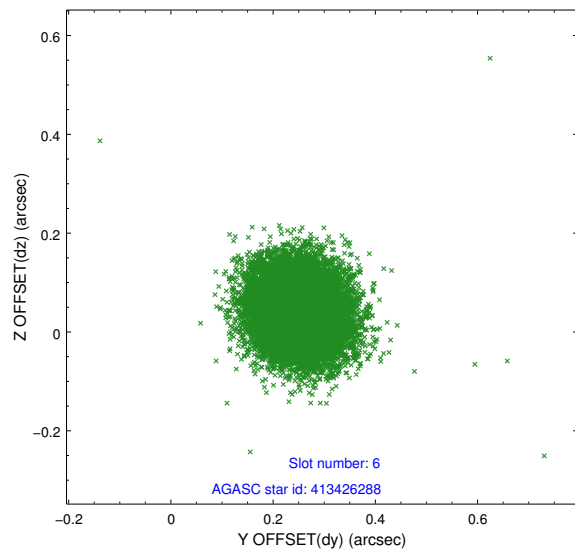
2.4.3 Slot 5



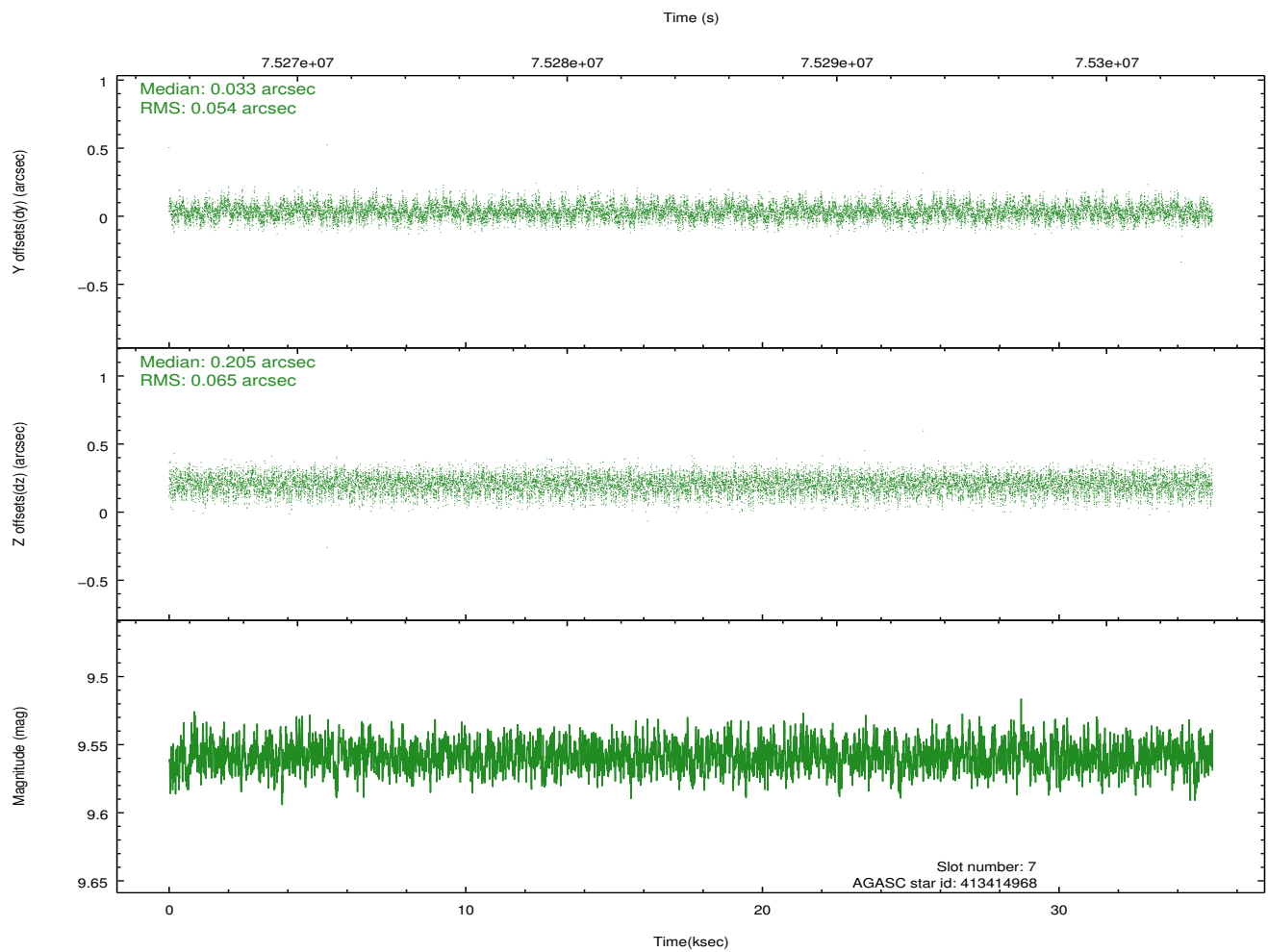
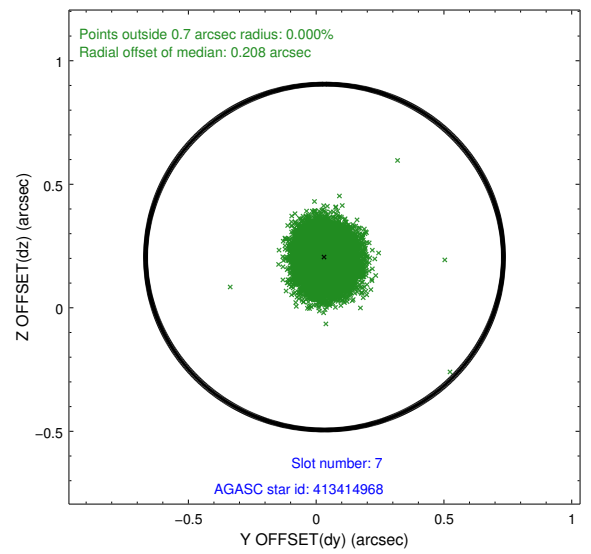
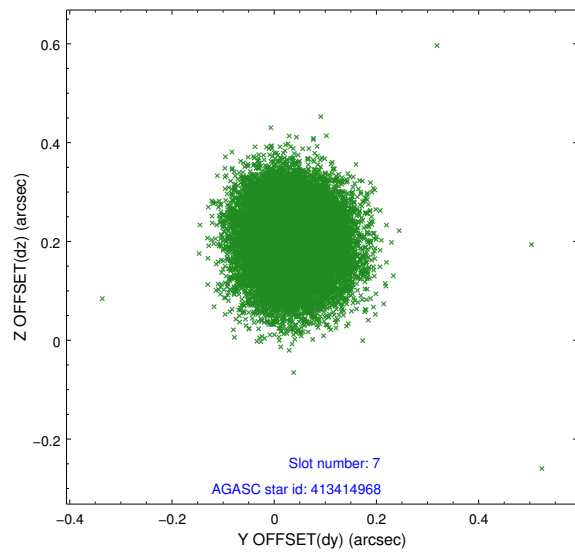
Time (s)



2.4.4 Slot 6

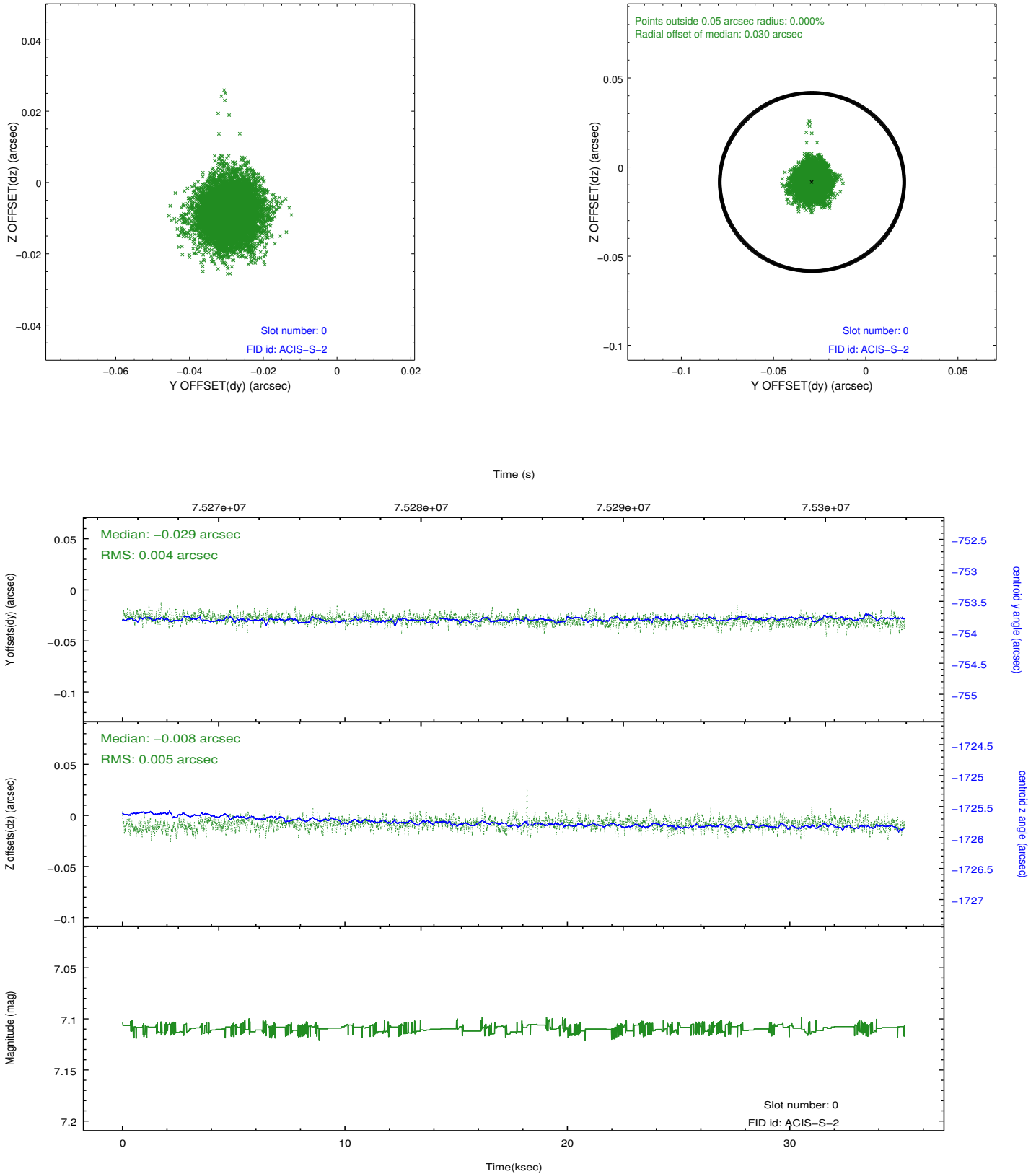


2.4.5 Slot 7

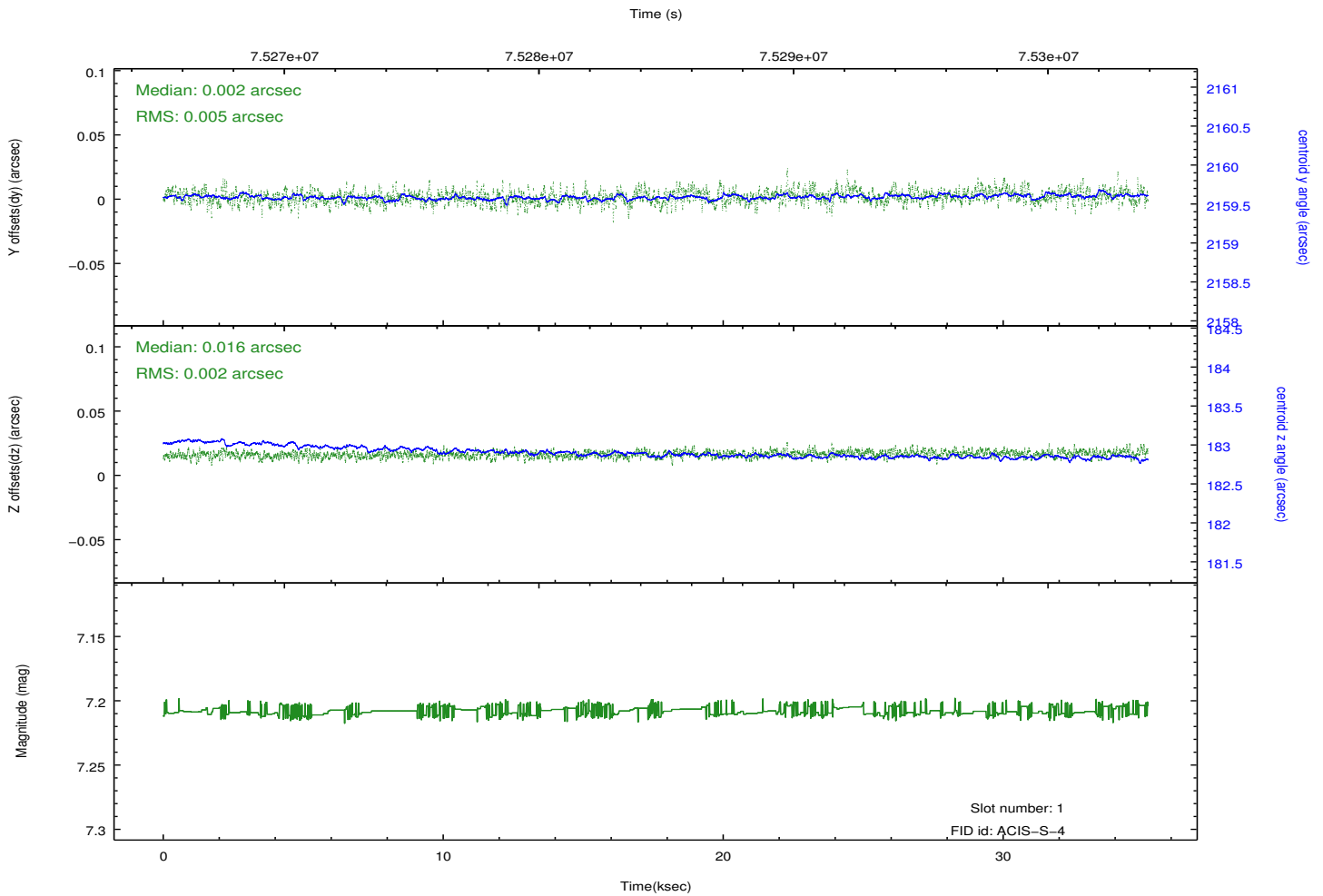
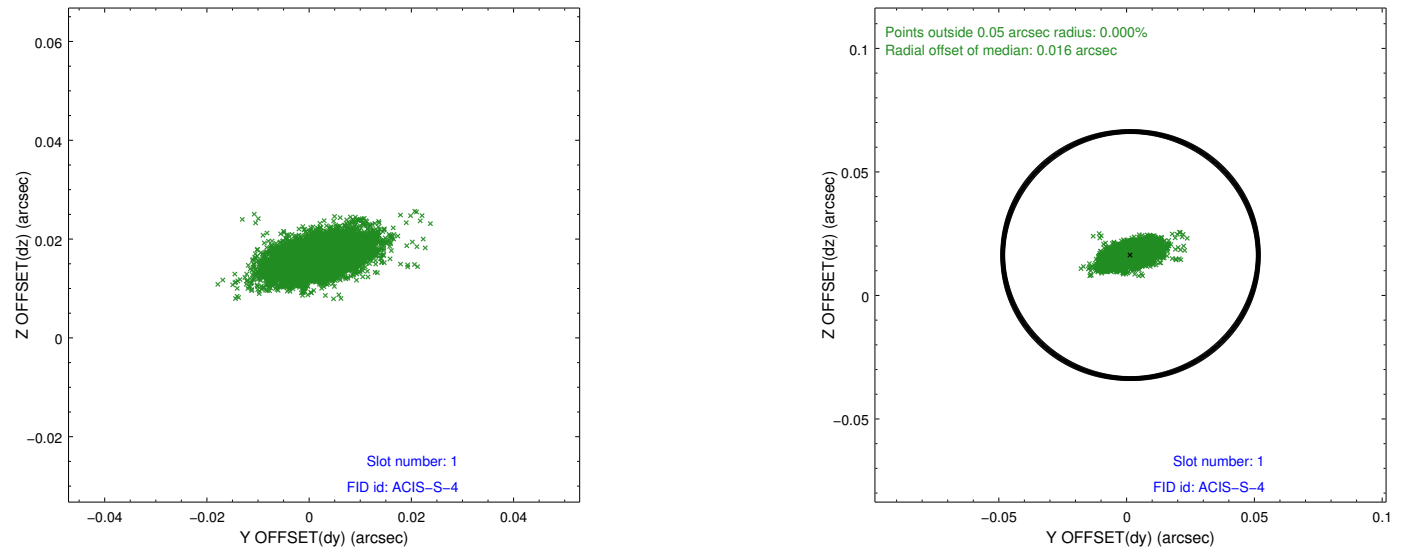


2.5 FID Slots

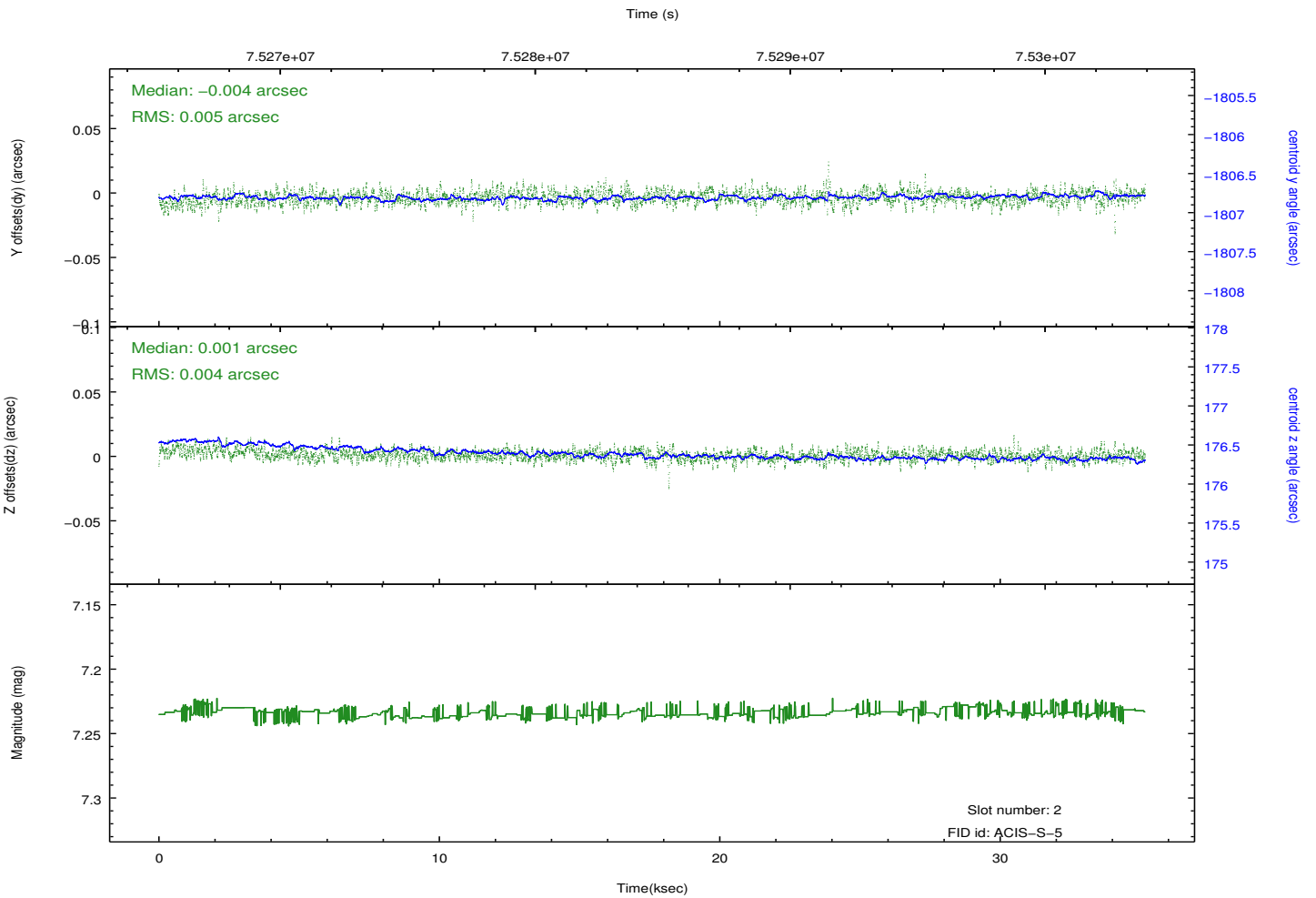
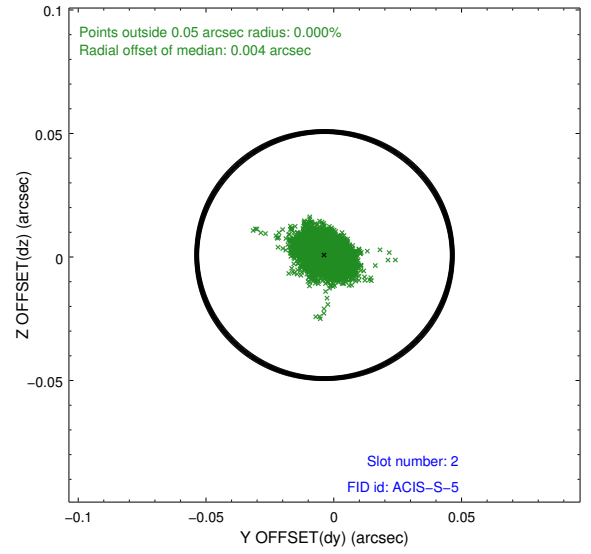
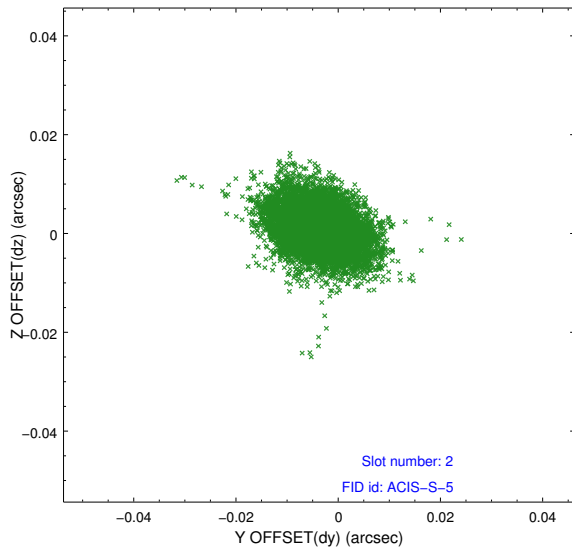
2.5.1 Slot 0



2.5.2 Slot 1



2.5.3 Slot 2



A Summary

A.1 Status

V&V Scientist	Jen Lauer
V&V Date (YYYY-MM-DD)	2012.08.30
V&V Edition	1
V&V Disposition and Status	OK
V&V Charge Time	35.164

A.2 Comments

Roll constraint met.