

V&V Reference Report

L2 ASCDS Version : 8.4.5

Observation 370 - L2 Version 5
Chandra X-Ray Center

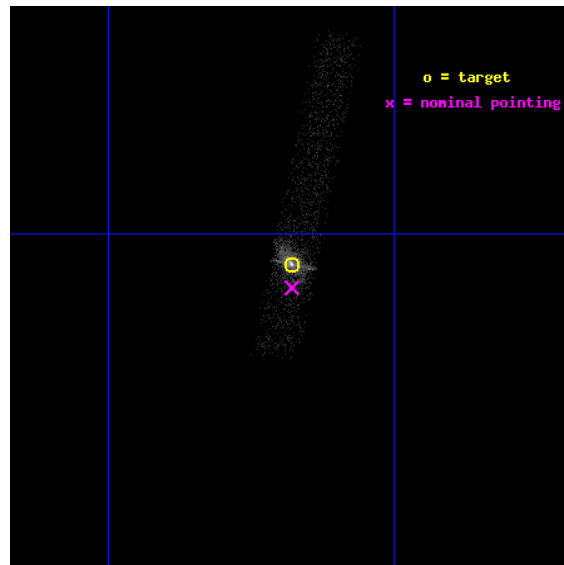
L2 Processing Date : Aug 23 2012

Contents

1	Front	2
2	OBI Primary	3
2.1	OBI	3
2.1.1	Images	3
2.1.2	Bias	3
2.1.3	Parameters	4
2.1.4	Events	4
2.2	Compared Parameters	5
2.3	Aspect	6
2.4	Star Slots	9
2.4.1	Slot 3	9
2.4.2	Slot 4	10
2.4.3	Slot 5	11
2.4.4	Slot 6	12
2.4.5	Slot 7	13
2.5	FID Slots	14
2.5.1	Slot 0	14
2.5.2	Slot 1	15
2.5.3	Slot 2	16
3	OBI Secondary	17
3.1	OBI	17
3.1.1	Images	17
3.1.2	Bias	17
3.1.3	Parameters	18
3.1.4	Events	18
A	Summary	19
A.1	Status	19
A.2	Comments	19

1 Front

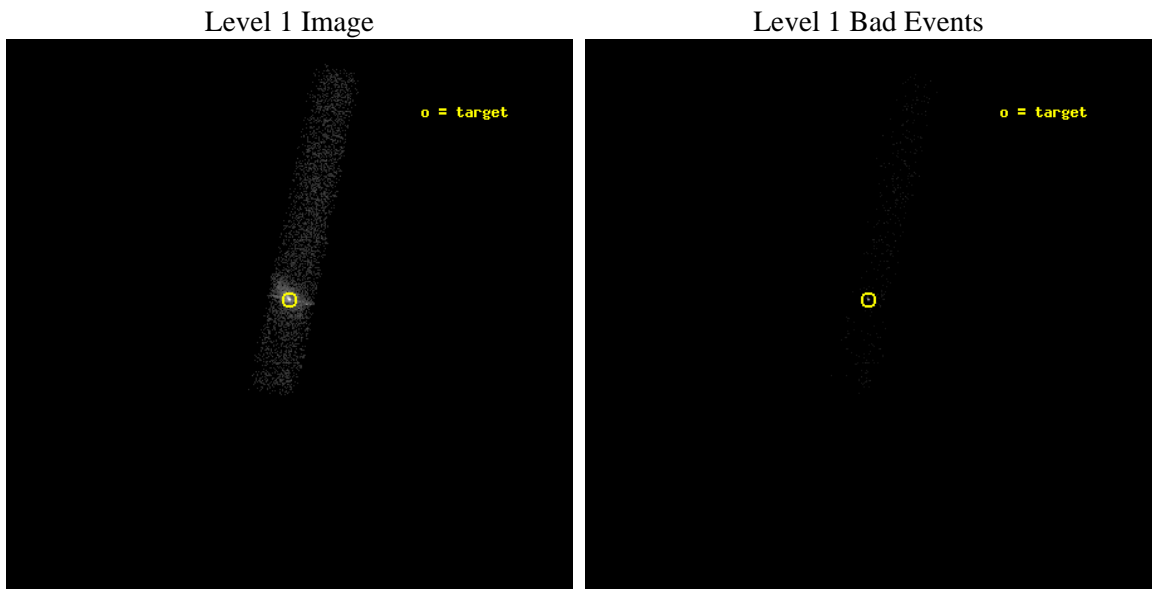
seq_num	700197	Sequence number
obs_id	370	Observation id
title	STUDIES OF RADIO JETS AND THE NARROW LINE REGIONS	Proposal title
observer	Professor Andrew Wilson	Principal investigator
object	NGC 1068	Source name
dtycle	0	
cycle	P	events are from which exps? P[rimary] S[econdar
ra_targ	40.669583	Observer's specified target RA [deg]
dec_targ	-0.013222	Observer's specified target Dec [deg]
ra_nom	40.669725663291	Nominal RA [deg]
dec_nom	-0.023347876376045	Nominal Dec [deg]
roll_nom	281.59940774112	Nominal Roll [deg]
revision	5	Processing version of data
ontime	8168.1234994531	Sum of GTIs [s]
livetime	1433.0041227111	Livetime [s]
ontime7	8168.1234994531	Sum of GTIs [s]
l2events	10748	Number of level 2 events



2 OBI Primary

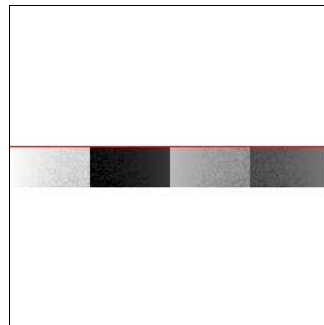
2.1 OBI

2.1.1 Images



2.1.2 Bias

Chip 7



2.1.3 Parameters

obi_num	0	Obi number	sched_exp_time	20959.498000	[s] Scheduled observation exposure time
ascdsver	8.4.5	Processing system revision	ontime	8168.1234994531	Sum of GTIs [s]
caldbver	4.5.1.1	 	ontime7	8168.1234994531	Sum of GTIs [s]
date	2012-08-23T01:36:22	Date and time of file creation	l1events	13493	Number of level 1 events
revision	5	Processing version of data			

2.1.4 Events

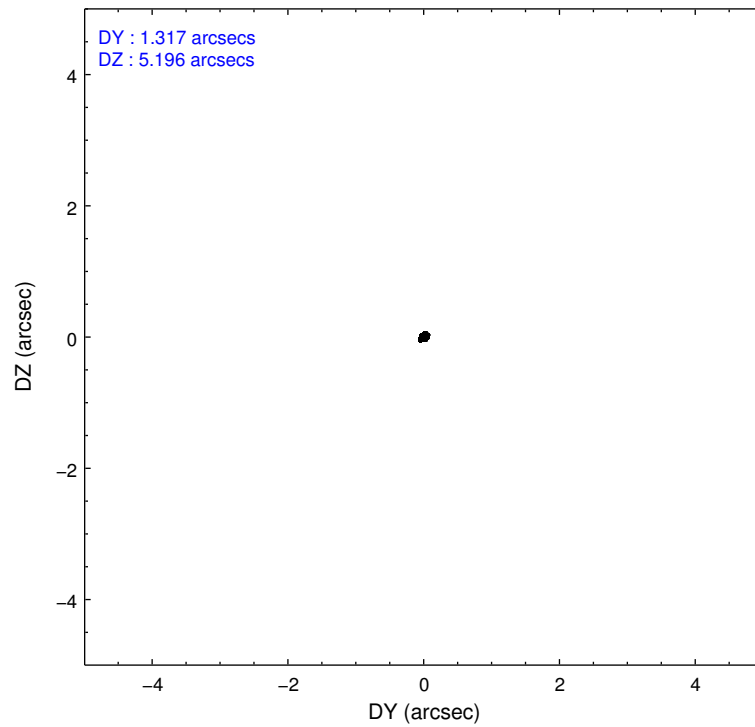
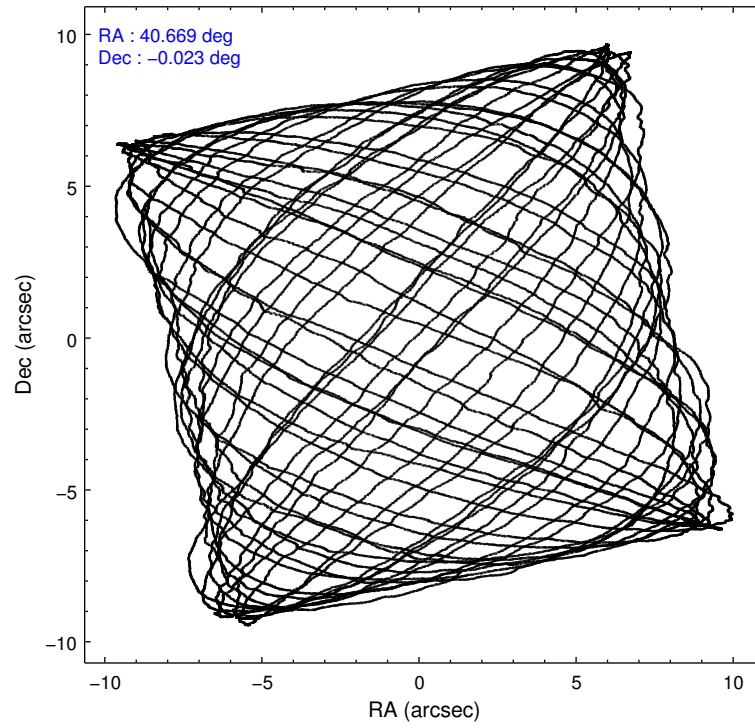
	ccd 7
level 1 events	13493
rejected events	2623
rejected %	19%

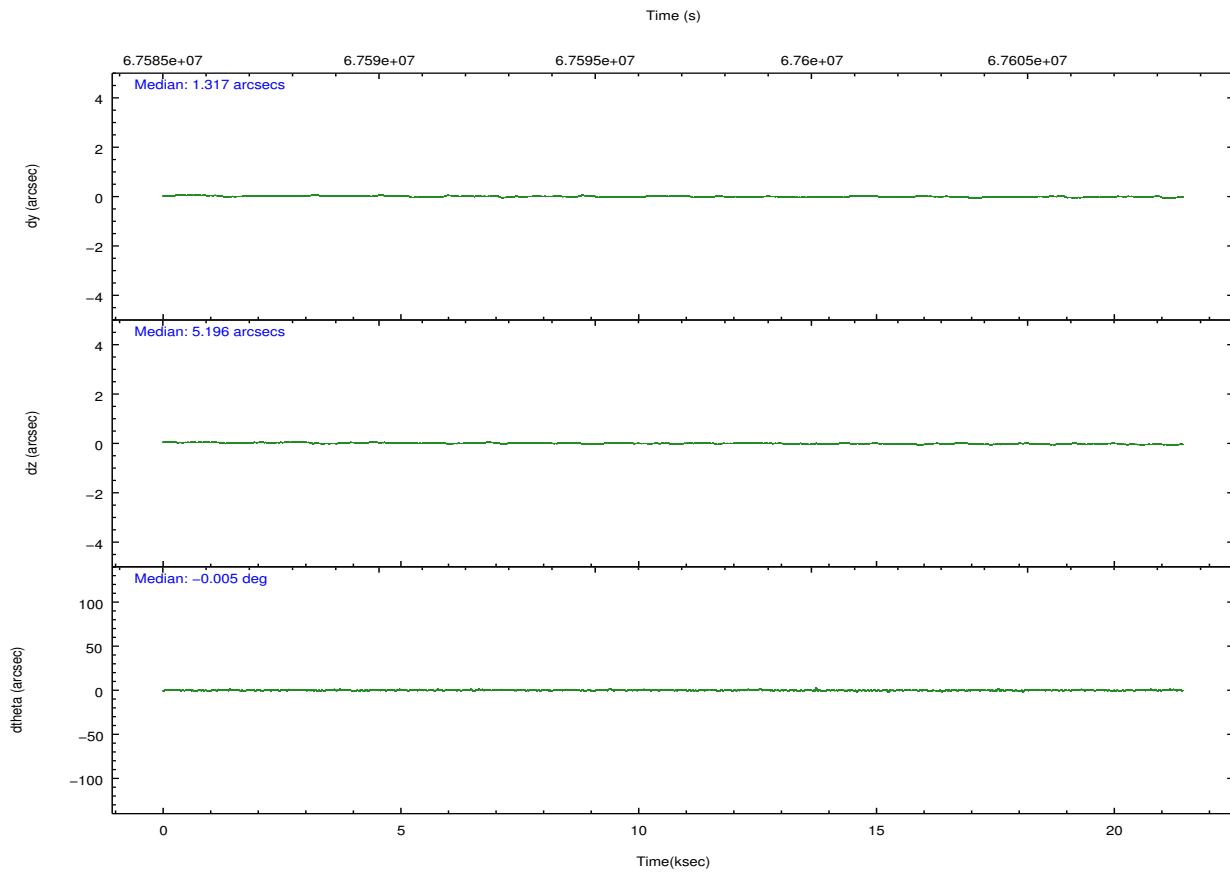
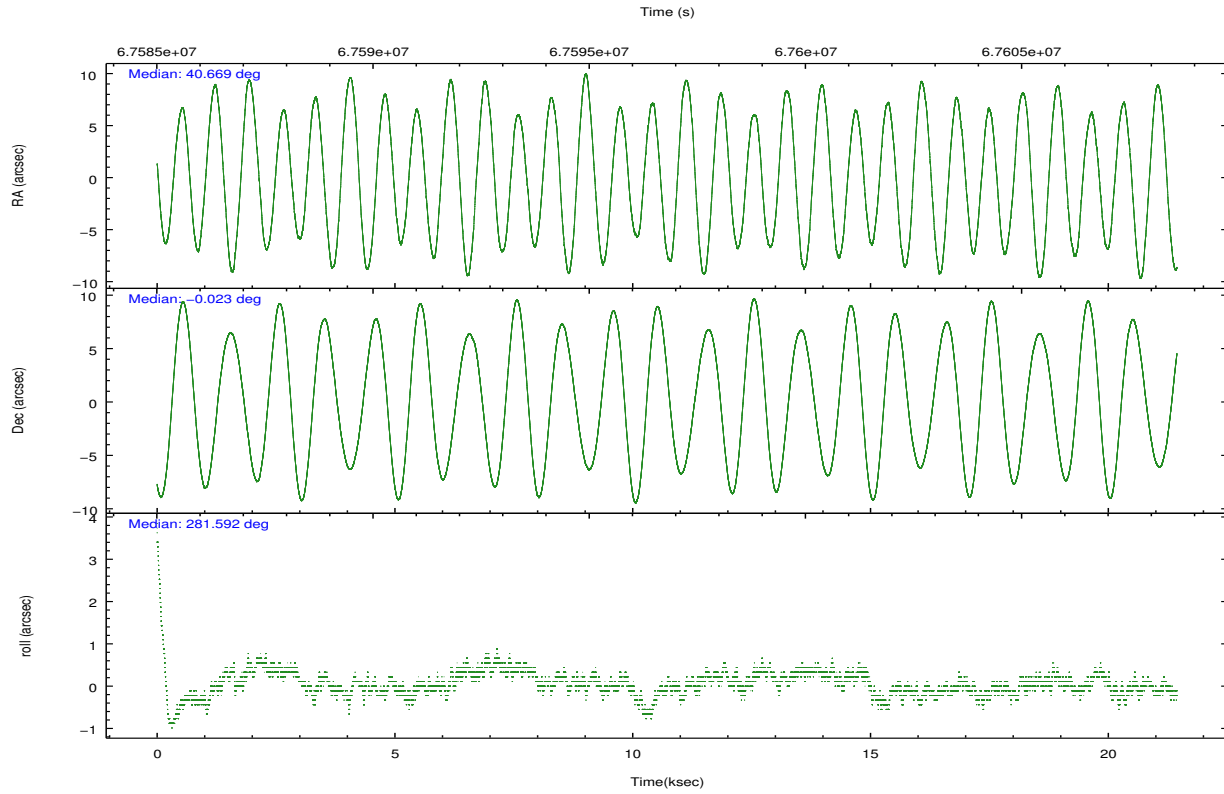
	ccd 7
grade 0 events	4333
	32%
grade 1 events	71
	0%
grade 2 events	2449
	18%
grade 3 events	1304
	9%
grade 4 events	1294
	9%
grade 5 events	498
	3%
grade 6 events	1490
	11%
grade 7 events	2054
	15%

2.2 Compared Parameters

Parameter	Planned	Actual	Parameter	Planned	Actual
Instrument	ACIS	ACIS	Obspar format version number	7	7
Detector	ACIS-7	ACIS-7	Obspar file type	PREDICTED	ACTUAL
Grating	NONE	NONE	Obspar update status	NONE	UPDATED
Data mode	VFAINT	VFAINT	Number of optional ACIS chips dropped	0	0
Observation mode	POINTING	POINTING	On-chip summing requested	N	N
[deg] Pointing RA	40.651482	40.6697256632914	Subarray requested	CUSTOM	1/8
[deg] Pointing Dec	-0.002779	-0.02334787637604459	Subarray start row	447	447
[deg] Pointing Roll	281.442778	281.5994077411181	Subarray row count	128	128
[mm] SIM focus pos	-0.684267	-0.6828225247311905	Alternating exposures requested	Y	Y
[mm] SIM defocus	0	0.001444936568705701	[s] Primary exposure time	0.100000	0.1
[mm] SIM translation stage pos	-190.132523	-190.1400660498719	[s] Secondary exposure time	0.400000	0.4
[mm] SIM translation stage offset	0	0.00754346686406393	Duty cycle	2	2
[s] Observation start time (MET)	67586563.184000	67585897.74097601			
Observation start date	2000-02-22T06:01:39	2000-02-22T05:51:37			
[s] Observation end time (MET)	67607523.184000	67608428.77929699			
Observation end date	2000-02-22T11:50:59	2000-02-22T12:07:08			
Read mode	TIMED	TIMED			

2.3 Aspect



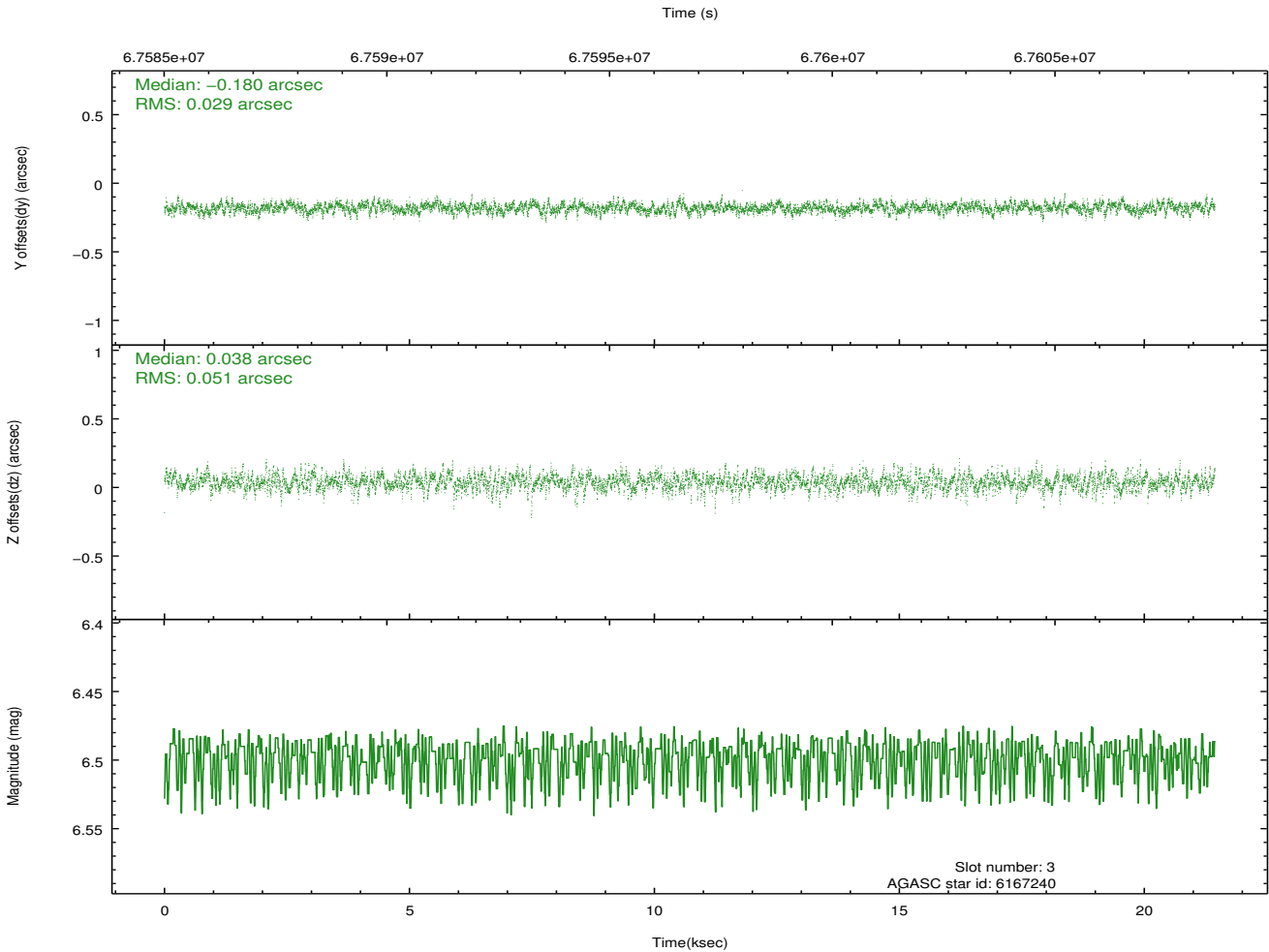
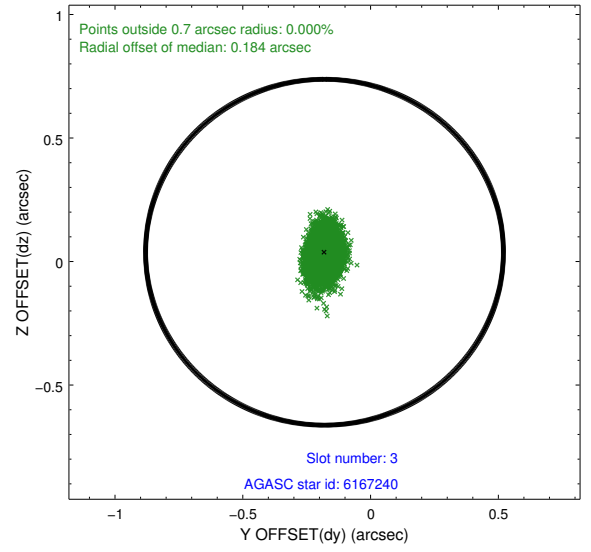
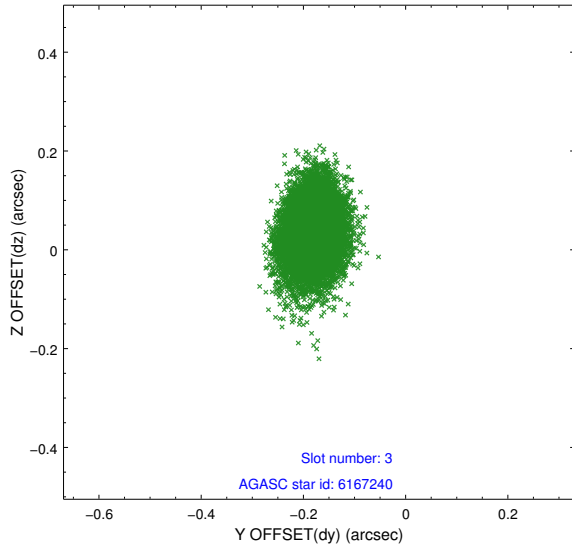


Slot Statistics

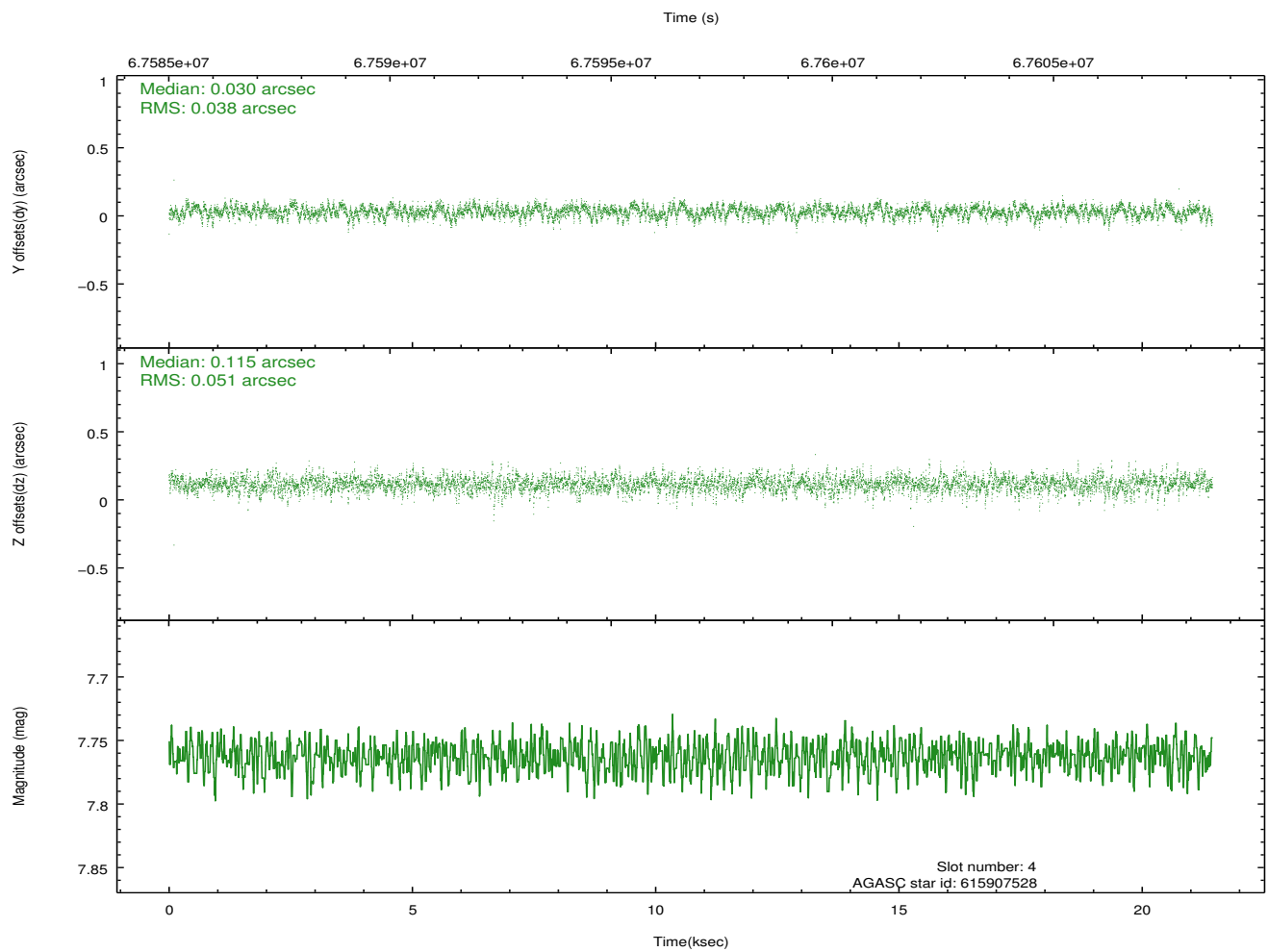
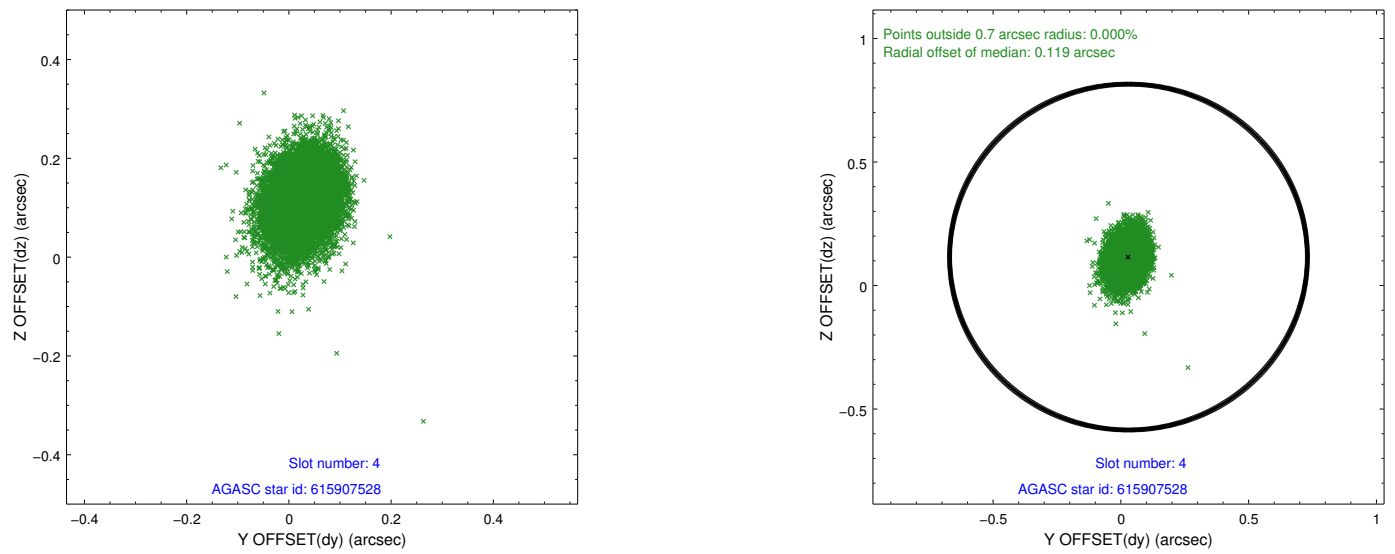
slot	status	id	mag	n_pts	med_dy	med_dz	dr1	dr2	ra	dec	mean_y	mean_z
0	FID	ACIS-S-1	7.19	5229	-0.012	-0.013	0.006	0.011	0.000000	0.000000	942.09	-1721.96
1	FID	ACIS-S-5	7.24	5228	-0.009	-0.007	0.006	0.011	0.000000	0.000000	-1806.79	175.46
2	FID	ACIS-S-6	7.36	5228	0.000	0.032	0.007	0.012	0.000000	0.000000	407.51	819.62
3	GUIDE	6167240	6.50	10459	-0.180	0.038	0.060	0.105	40.376070	0.546022	-2132.37	-579.20
4	GUIDE	615907528	7.76	10461	0.030	0.115	0.065	0.111	41.252710	-0.191636	1096.23	1987.57
5	GUIDE	615907472	8.37	10459	-0.023	-0.095	0.070	0.117	40.049578	-0.266703	502.64	-2311.27
6	GUIDE	615913552	8.71	10452	0.005	0.109	0.079	0.128	41.235237	-0.003650	420.65	2059.91
7	GUIDE	615910960	9.61	10446	0.166	-0.158	0.098	0.167	40.339678	-0.092669	95.70	-1163.49

2.4 Star Slots

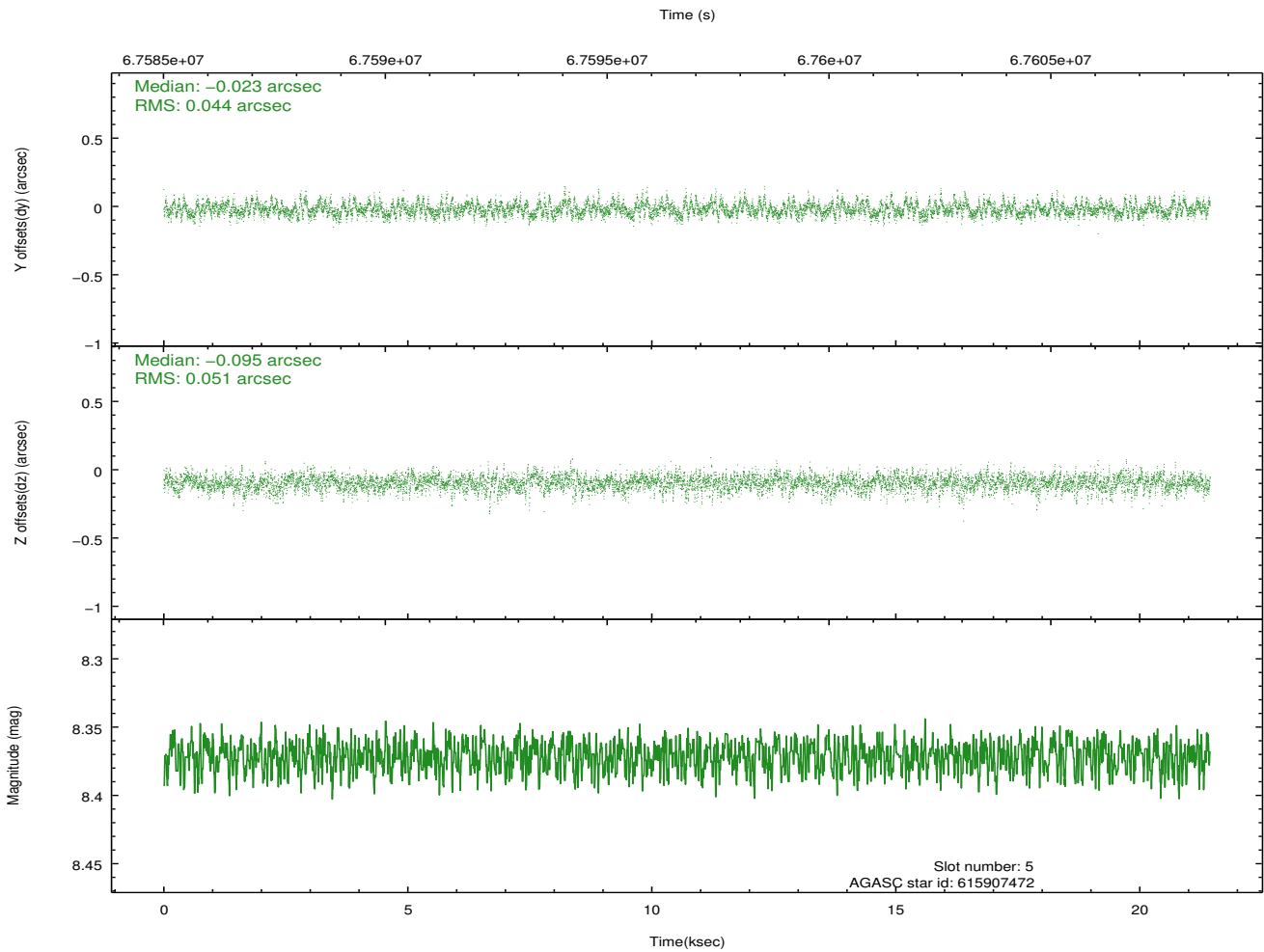
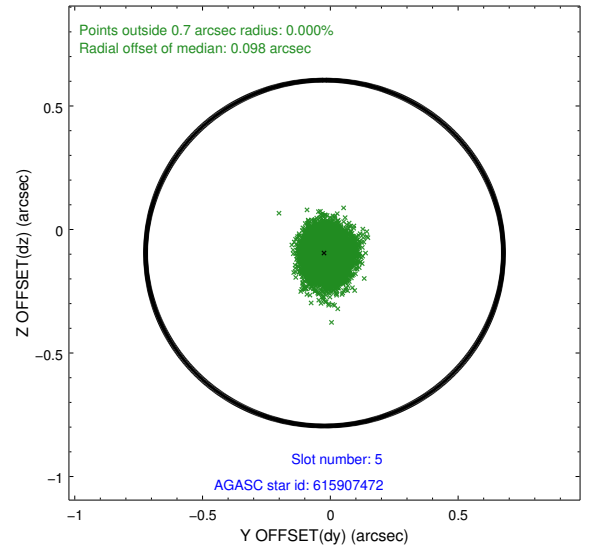
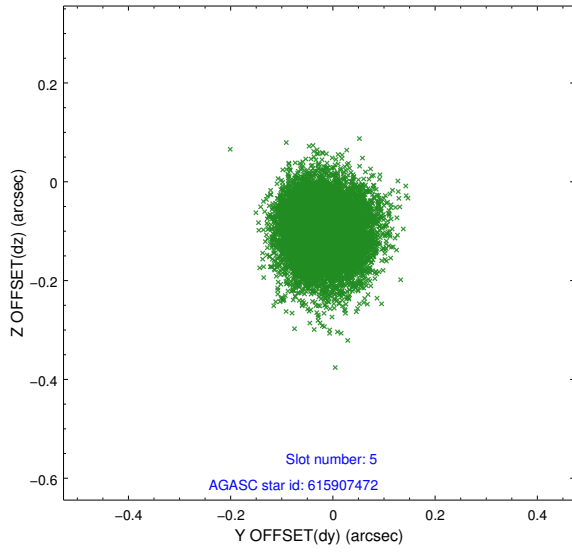
2.4.1 Slot 3



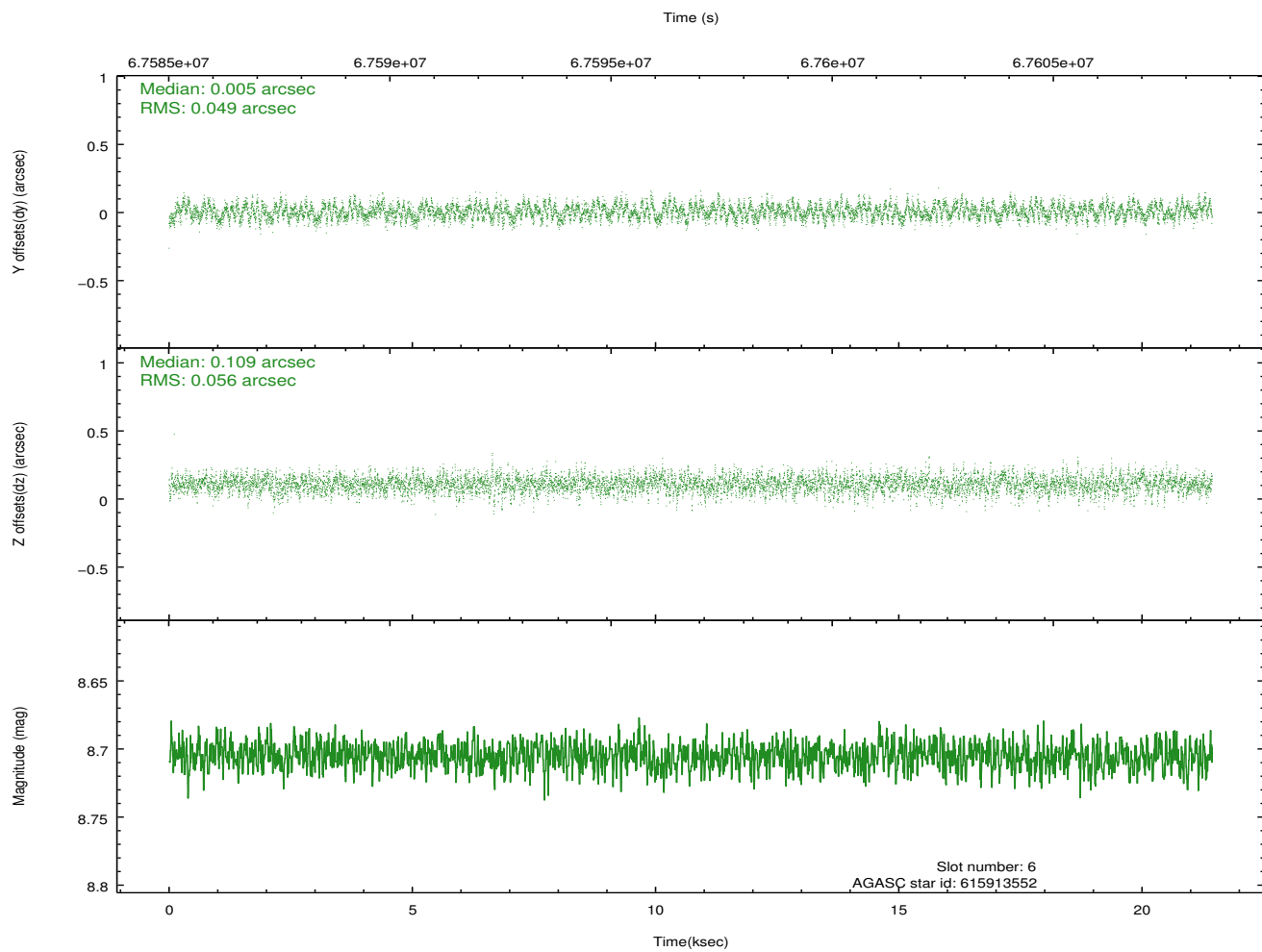
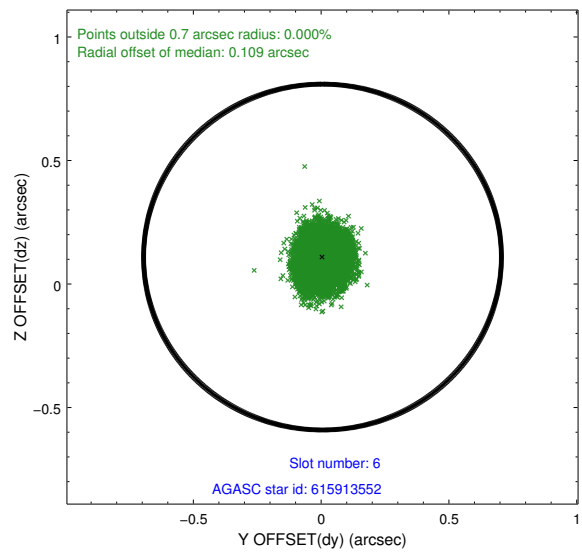
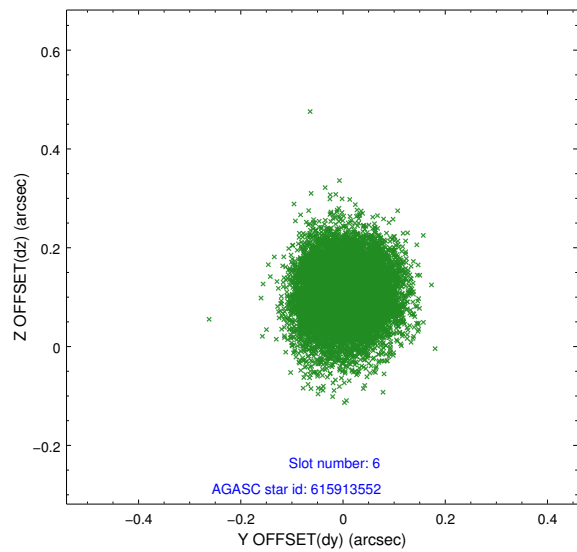
2.4.2 Slot 4



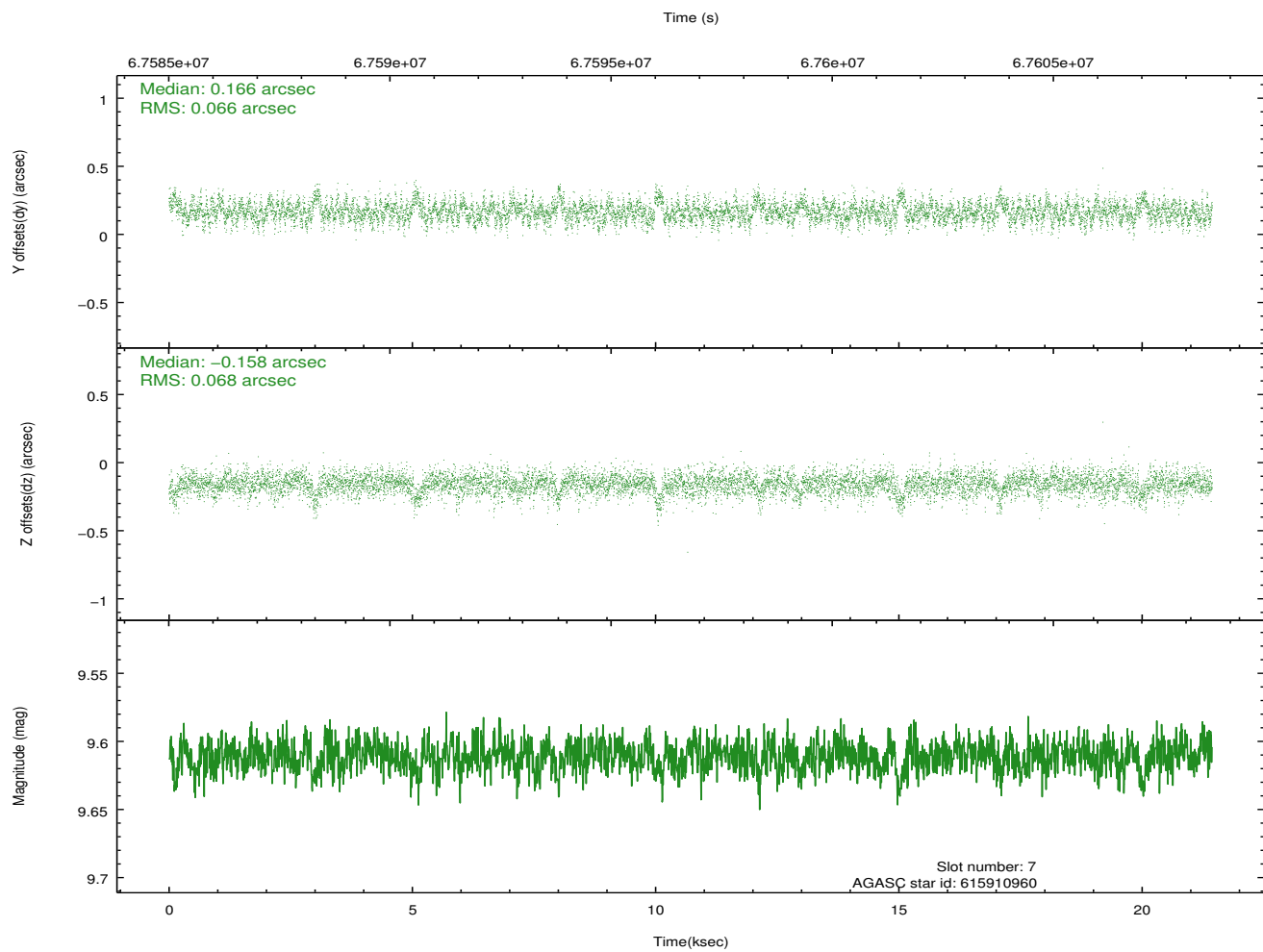
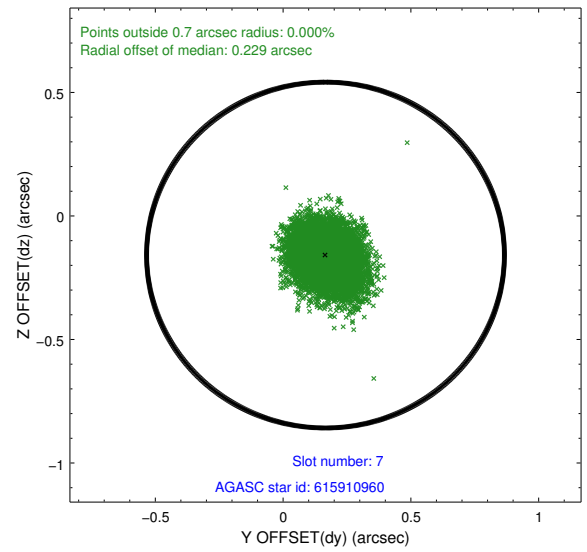
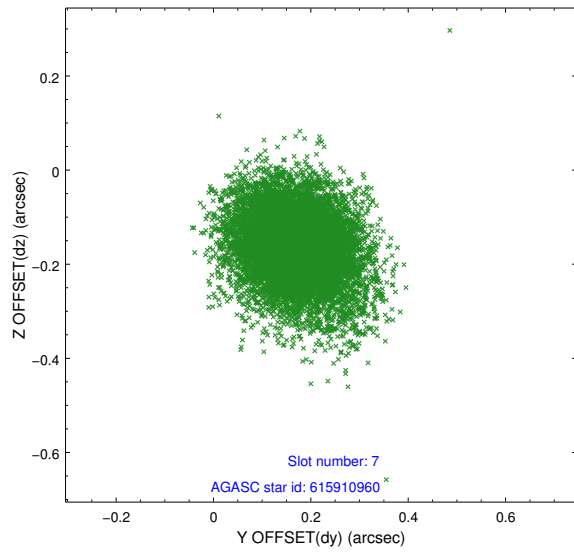
2.4.3 Slot 5



2.4.4 Slot 6

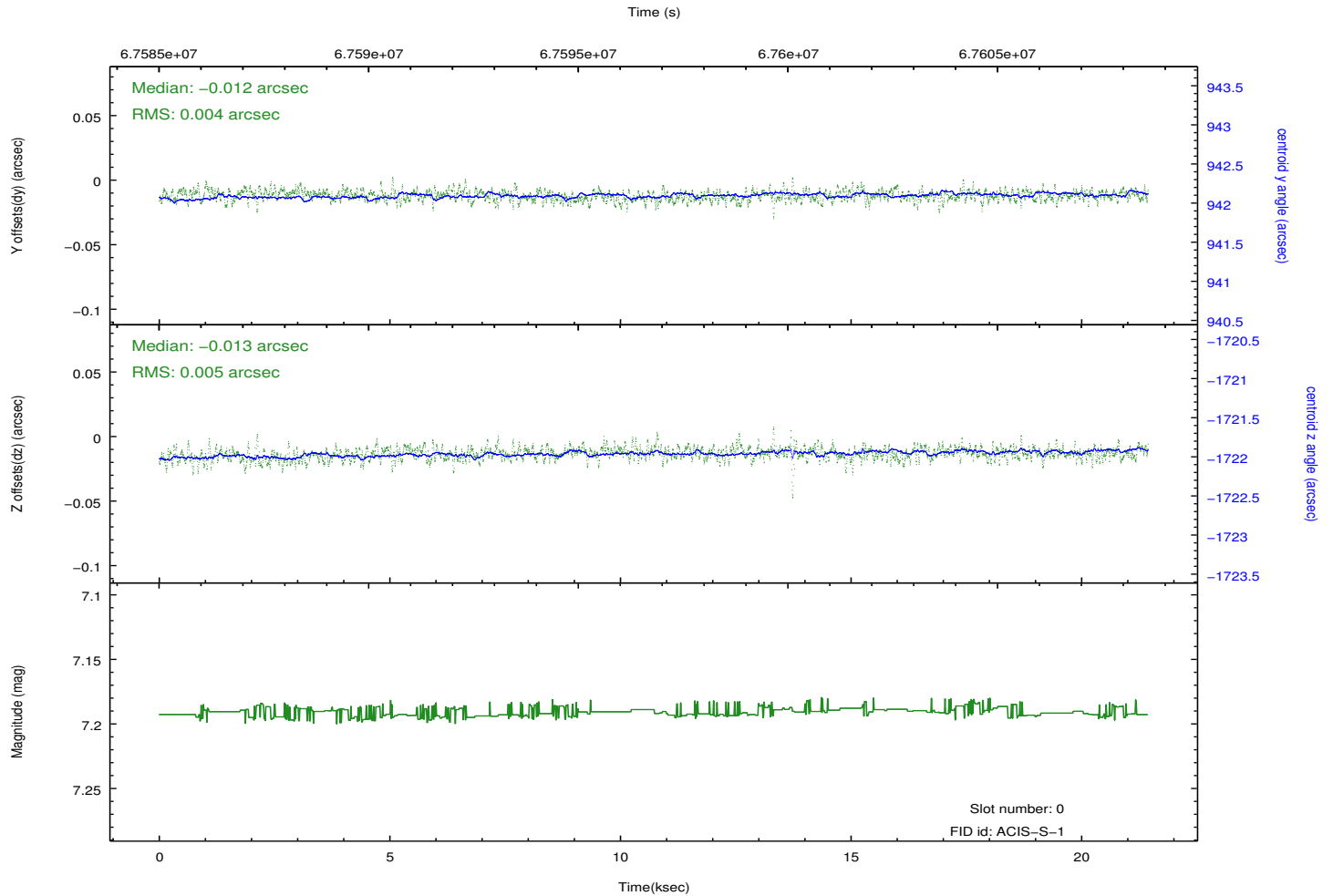
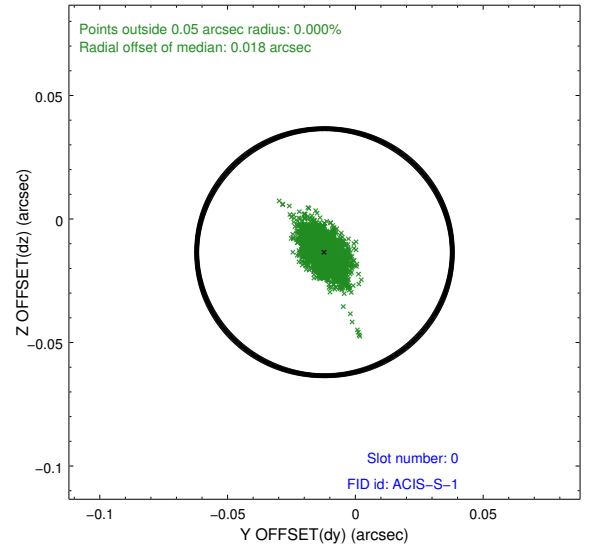
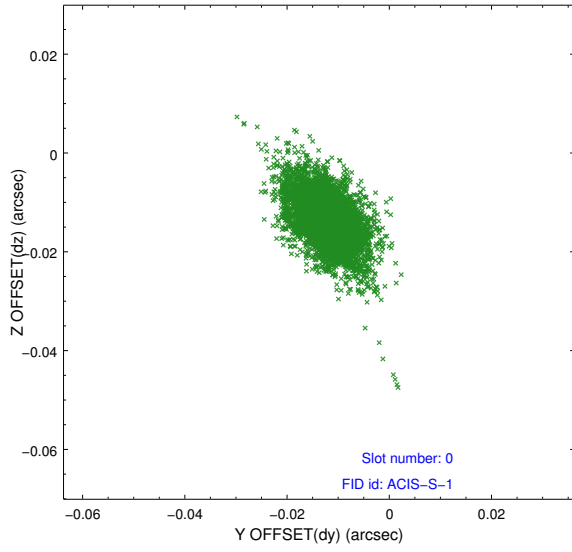


2.4.5 Slot 7

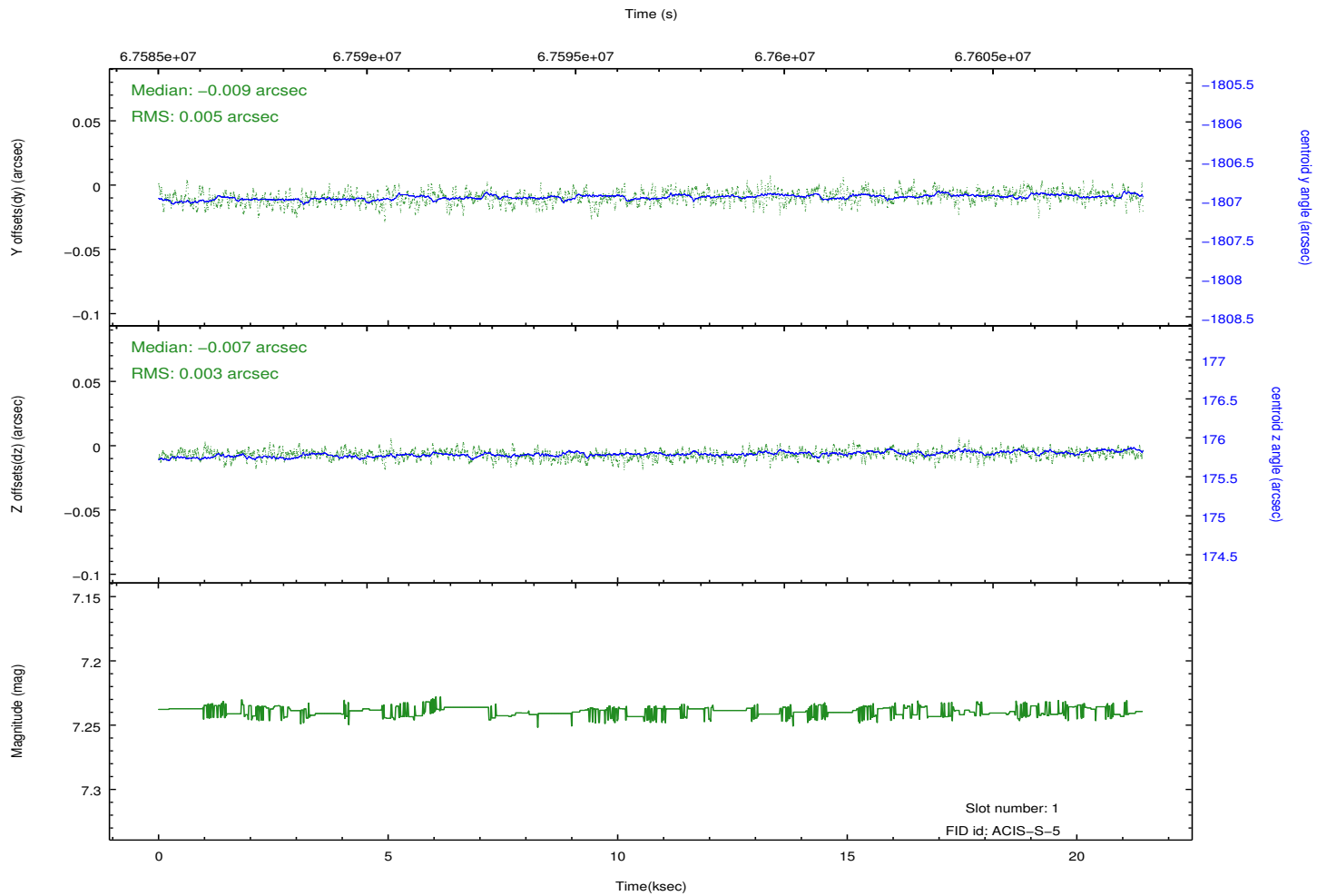
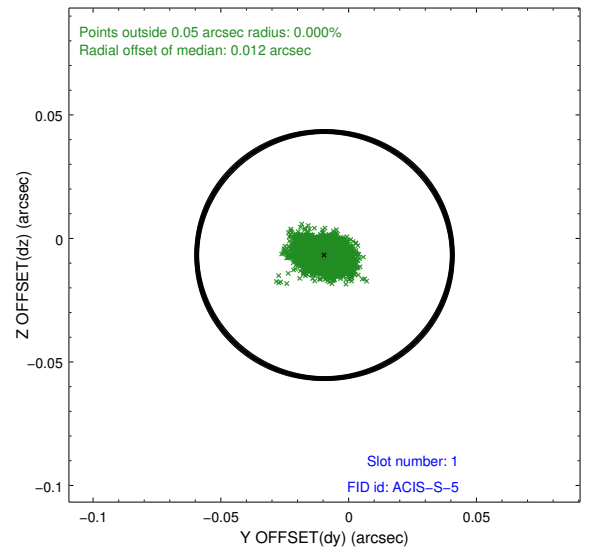
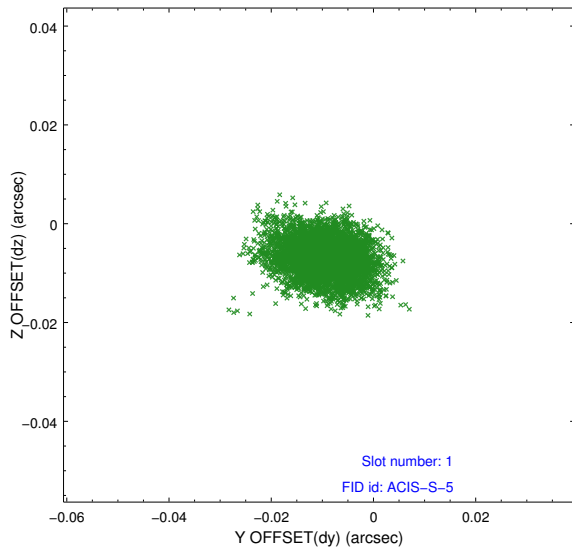


2.5 FID Slots

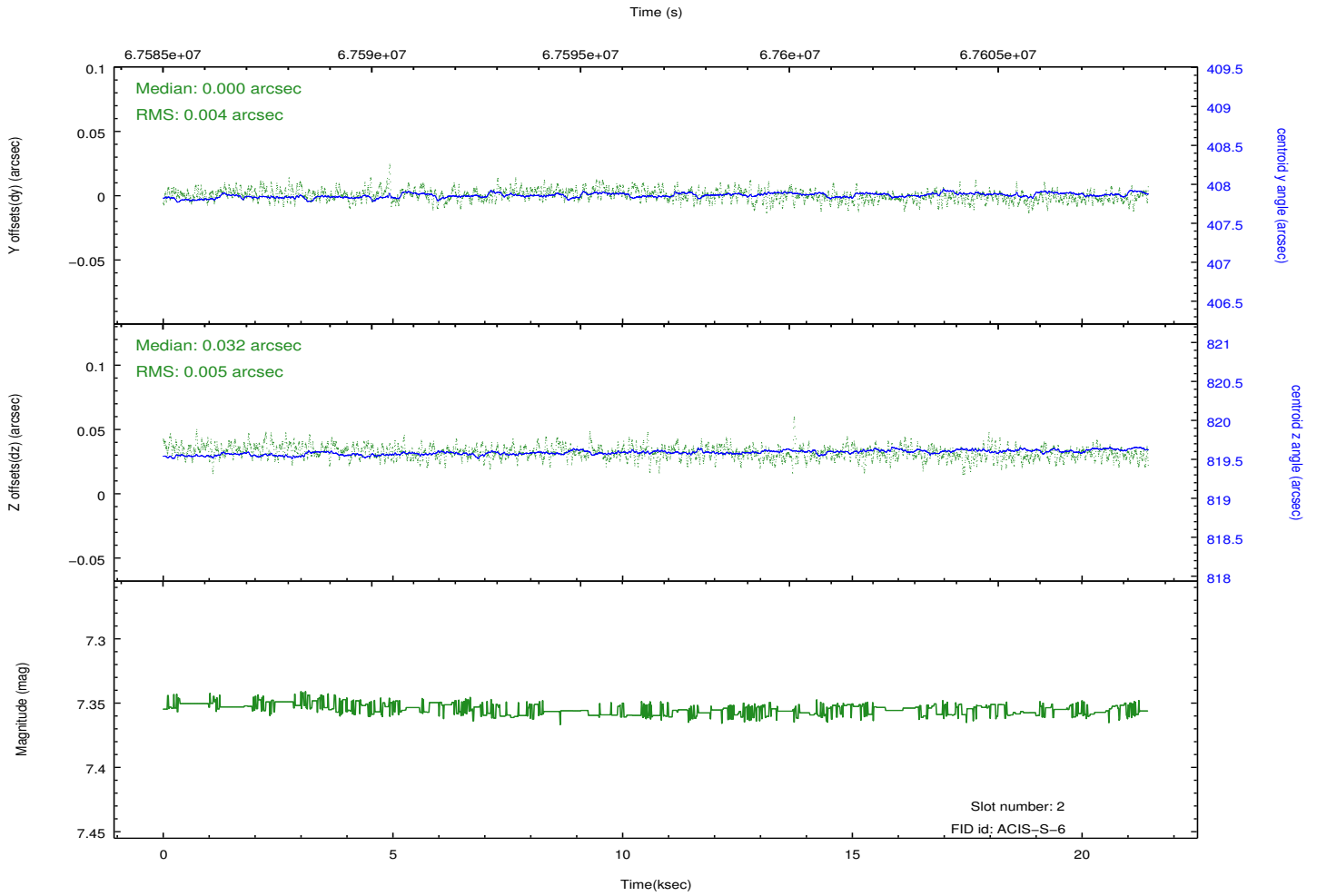
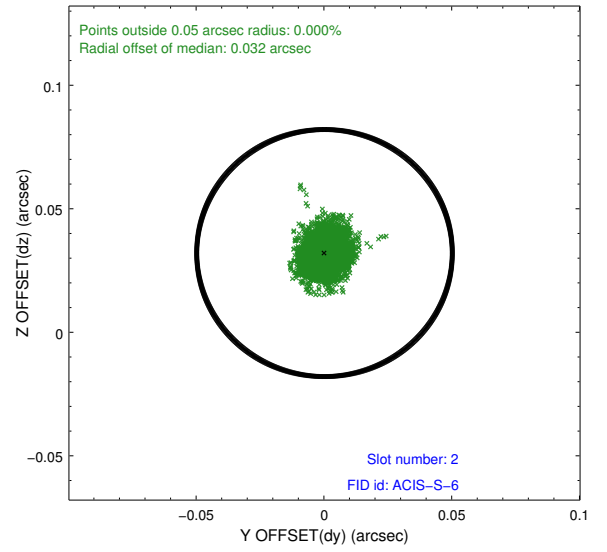
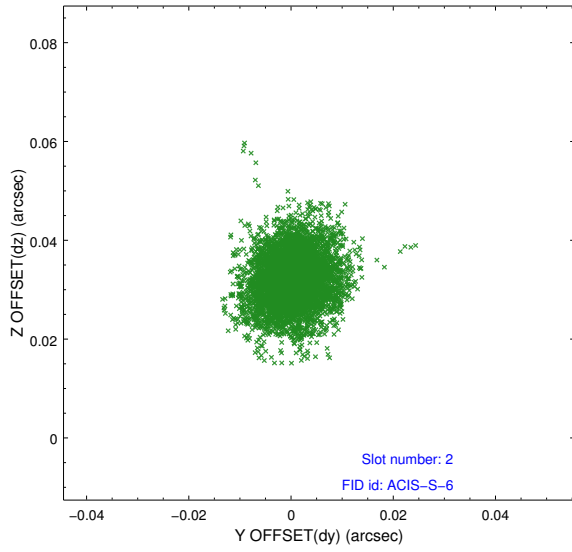
2.5.1 Slot 0



2.5.2 Slot 1



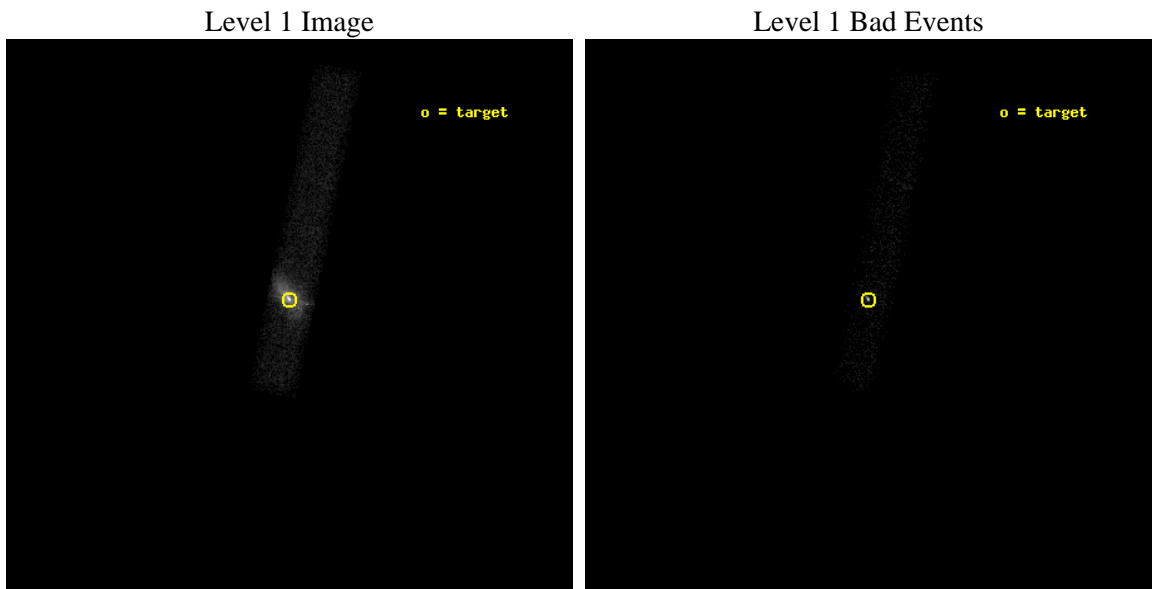
2.5.3 Slot 2



3 OBI Secondary

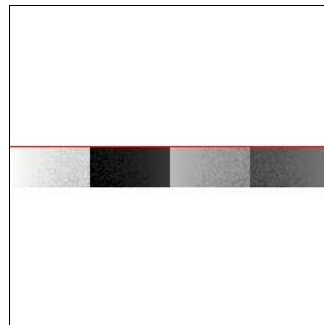
3.1 OBI

3.1.1 Images



3.1.2 Bias

Chip 7



3.1.3 Parameters

obi_num	0	Obi number	sched_exp_time	20959.498000	[s] Scheduled observation exposure time
ascdsver	8.4.5	Processing system revision	ontime	12641.322356373	Sum of GTIs [s]
caldbver	4.5.1.1	 	ontime7	12641.322356373	Sum of GTIs [s]
date	2012-08-23T01:38:26	Date and time of file creation	l1events	77530	Number of level 1 events
revision	5	Processing version of data			

3.1.4 Events

	ccd 7
level 1 events	77530
rejected events	13333
rejected %	17%

	ccd 7
grade 0 events	23492
	30%
grade 1 events	1184
	1%
grade 2 events	15263
	19%
grade 3 events	7292
	9%
grade 4 events	7218
	9%
grade 5 events	3941
	5%
grade 6 events	10937
	14%
grade 7 events	8203
	10%

A Summary

A.1 Status

V&V Scientist	Jen Lauer
V&V Date (YYYY-MM-DD)	2012.08.23
V&V Edition	1
V&V Disposition and Status	OK
V&V Charge Time	20.809

A.2 Comments