

V&V Reference Report

L2 ASCDS Version : 8.4.5

Observation 3710 - L2 Version 3
Chandra X-Ray Center

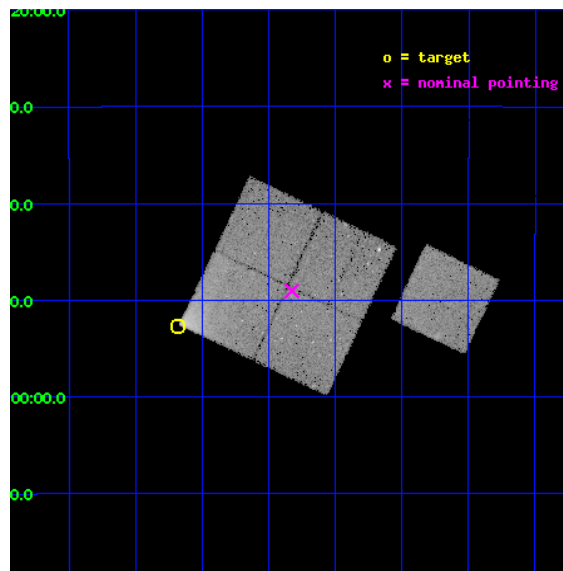
L2 Processing Date : Oct 10 2012

Contents

1	Front	2
2	OBI	3
2.1	OBI	3
2.1.1	Images	3
2.1.2	Bias	3
2.1.3	Parameters	4
2.1.4	Events	4
2.2	Compared Parameters	5
2.3	Aspect	6
2.4	Star Slots	9
2.4.1	Slot 3	9
2.4.2	Slot 4	10
2.4.3	Slot 5	11
2.4.4	Slot 6	12
2.4.5	Slot 7	13
2.5	FID Slots	14
2.5.1	Slot 0	14
2.5.2	Slot 1	15
2.5.3	Slot 2	16
A	Summary	17
A.1	Status	17
A.2	Comments	17

1 Front

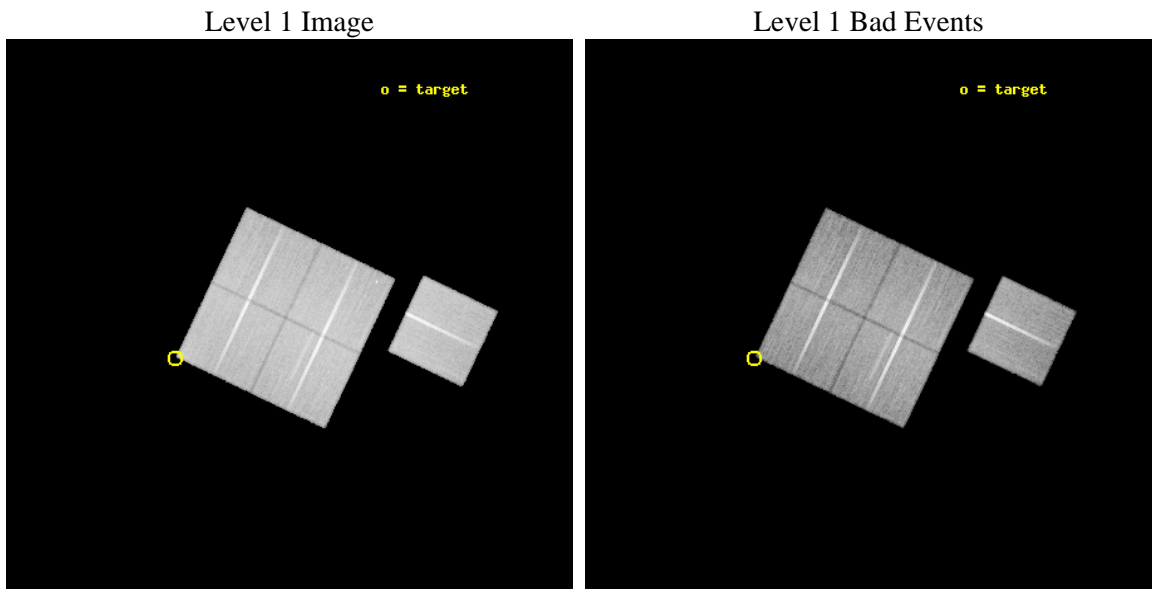
seq_num	800183	Sequence number
obs_id	3710	Observation id
title	DEEP X-RAY IMAGE OF A133	Proposal title
observer	Dr. Stephen Murray	Principal investigator
object	A133 OFFSET	Source name
dtcycle	0	
cycle	P	events from which exps? Prim/Second/Both
ra_targ	15.67	Observer's specified target RA [deg]
dec_targ	-21.878	Observer's specified target Dec [deg]
ra_nom	15.456633716055	Nominal RA [deg]
dec_nom	-21.81755614134	Nominal Dec [deg]
roll_nom	115.47909951336	Nominal Roll [deg]
revision	3	Processing version of data
ontime	45182.458922952	Sum of GTIs [s]
livetime	44592.116834282	Livetime [s]
ontime0	45185.59991309	Sum of GTIs [s]
ontime1	45179.317992657	Sum of GTIs [s]
ontime2	45179.317992628	Sum of GTIs [s]
ontime3	45182.458922952	Sum of GTIs [s]
ontime6	45176.177022427	Sum of GTIs [s]
l2events	116464	Number of level 2 events



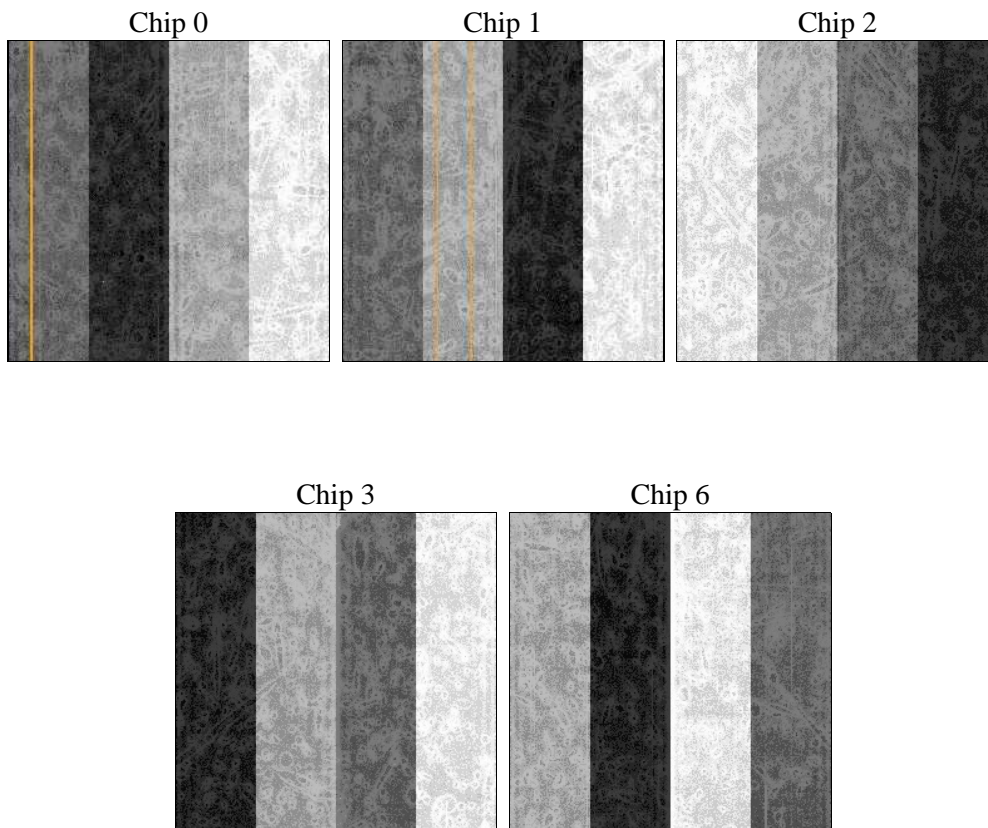
2 OBI

2.1 OBI

2.1.1 Images



2.1.2 Bias



2.1.3 Parameters

obi_num	0	Obi number	sched_exp_time	45000.000000	[s] Scheduled observation exposure time
ascdsver	8.4.5	Processing system revision	ontime	45182.458922952	Sum of GTIs [s]
caldsver	4.5.2	 	ontime0	45185.59991309	Sum of GTIs [s]
date	2012-10-10T05:10:57	Date and time of file creation	ontime1	45179.317992657	Sum of GTIs [s]
revision	3	Processing version of data	ontime2	45179.317992628	Sum of GTIs [s]
			ontime3	45182.458922952	Sum of GTIs [s]
			ontime6	45176.177022427	Sum of GTIs [s]
			l1events	1267252	Number of level 1 events

2.1.4 Events

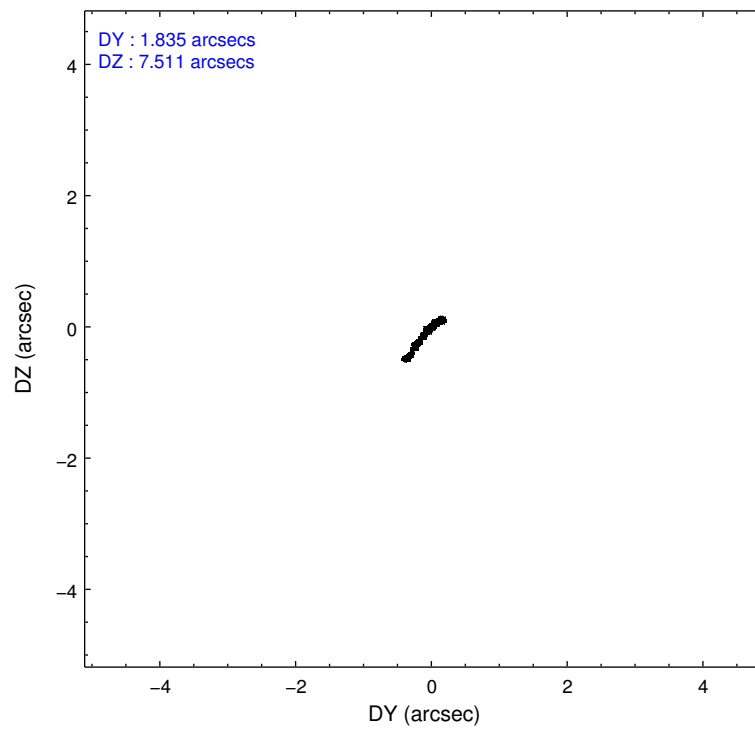
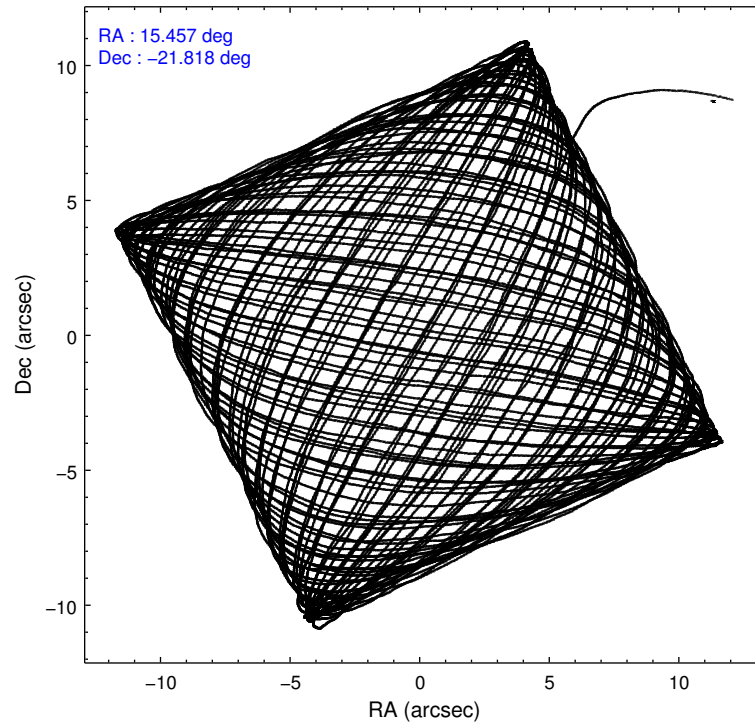
	ccd 0	ccd 1	ccd 2	ccd 3	ccd 6
level 1 events	234608	250881	264230	263375	254158
rejected events	209920	210624	239173	239073	229126
rejected %	89%	83%	90%	90%	90%

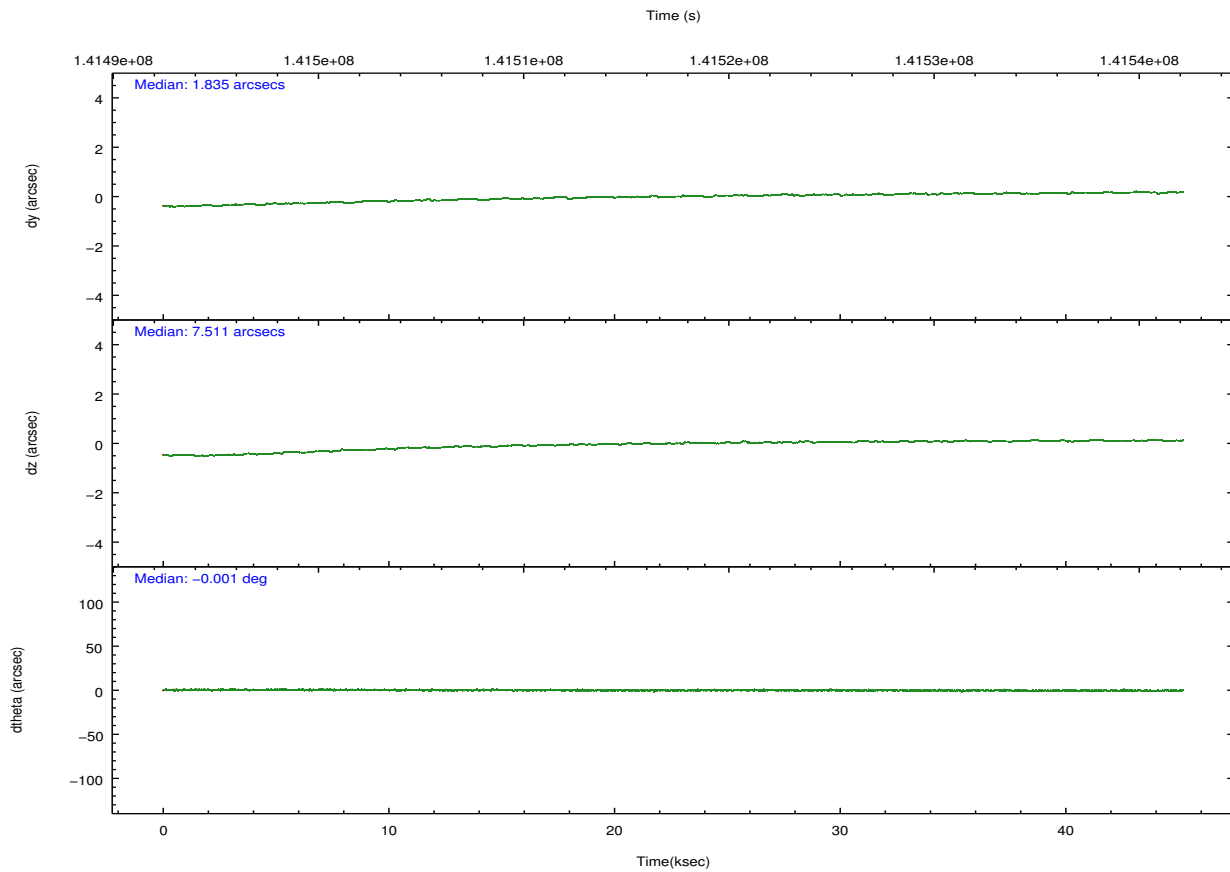
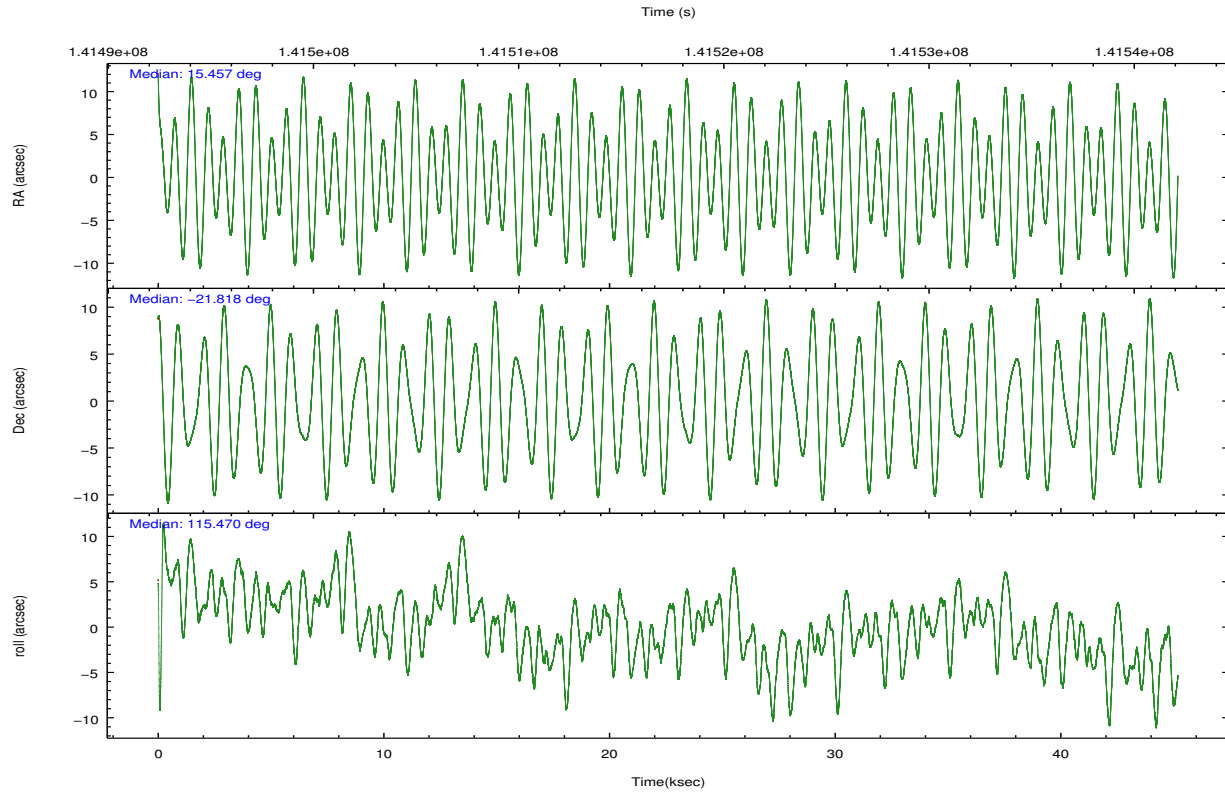
	ccd 0	ccd 1	ccd 2	ccd 3	ccd 6
grade 0 events	8694	20588	9473	9051	8823
	3%	8%	3%	3%	3%
grade 1 events	109	148	103	110	97
	0%	0%	0%	0%	0%
grade 2 events	5648	7080	5781	5109	5262
	2%	2%	2%	1%	2%
grade 3 events	2937	3468	2659	2722	2933
	1%	1%	1%	1%	1%
grade 4 events	2668	3485	2627	2726	2946
	1%	1%	0%	1%	1%
grade 5 events	7770	8931	7690	8950	9192
	3%	3%	2%	3%	3%
grade 6 events	4767	5662	4540	4708	5094
	2%	2%	1%	1%	2%
grade 7 events	202015	201519	231357	229999	219811
	86%	80%	87%	87%	86%

2.2 Compared Parameters

Parameter	Planned	Actual	Parameter	Planned	Actual
Instrument	ACIS	ACIS	Obspar format version number	7	7
Detector	ACIS-01236	ACIS-01236	Obspar file type	PREDICTED	ACTUAL
Grating	NONE	NONE	Obspar update status	NONE	UPDATED
Data mode	VFAINT	VFAINT	Number of optional ACIS chips dropped	0	0
Observation mode	POINTING	POINTING	On-chip summing requested	N	N
[deg] Pointing RA	15.481004	15.45663371605481	Subarray requested	NONE	NONE
[deg] Pointing Dec	-21.833022	-21.81755614134016	Alternating exposures requested	N	N
[deg] Pointing Roll	115.279468	115.4790995133627	[s] Primary exposure time	0.000000	3.1
[mm] SIM focus pos	-0.782348	-0.7809083437167272			
[mm] SIM defocus	0	0.001439871863259334			
[mm] SIM translation stage pos	-233.592463	-233.5874344608287			
[mm] SIM translation stage offset	0	-0.005018542100998502			
[s] Observation start time (MET)	141494877.184000	141493870.5186			
Observation start date	2002-06-26T16:06:53	2002-06-26T15:51:10			
[s] Observation end time (MET)	141539877.184000	141540602.83301			
Observation end date	2002-06-27T04:36:53	2002-06-27T04:50:02			
Read mode	TIMED	TIMED			

2.3 Aspect





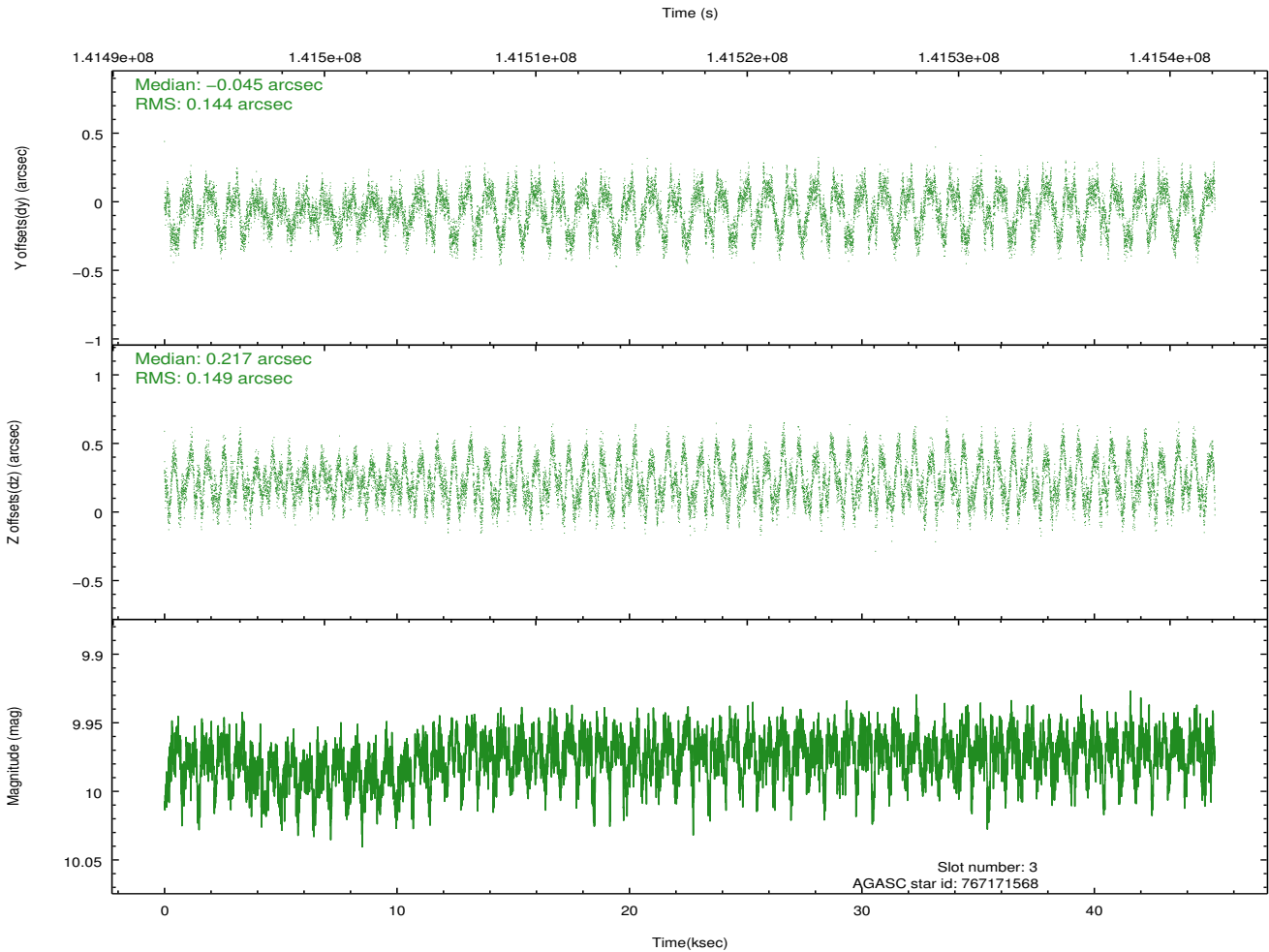
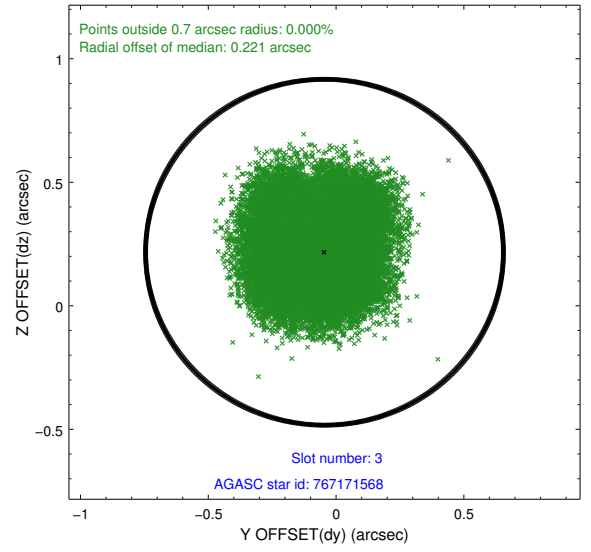
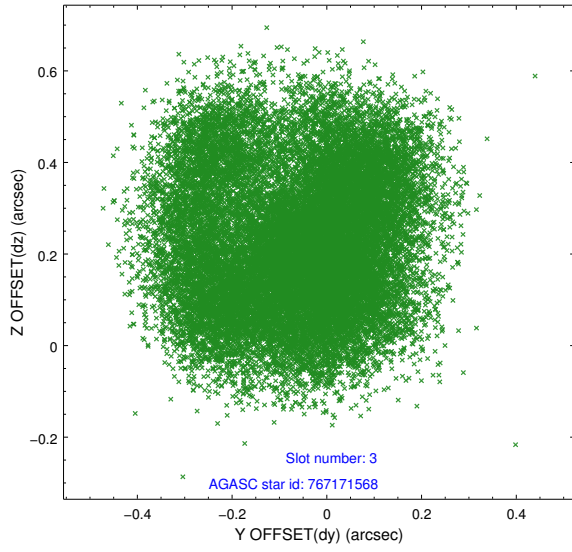
Slot Statistics

slot	status	id	mag	n_pts	med_dy	med_dz	dr1	dr2	ra	dec	mean_y	mean_z
0	FID	ACIS-I-1	7.24	11022	-0.009	0.035	0.018	0.025	0.000000	0.000000	938.00	-830.83
1	FID	ACIS-I-5	7.24	11023	-0.052	0.046	0.015	0.021	0.000000	0.000000	-1810.11	1066.73
2	FID	ACIS-I-6	7.26	11023	-0.032	-0.012	0.015	0.021	0.000000	0.000000	403.58	1711.13
3	GUIDE	767171568	9.97	22035	-0.045	0.217	0.232	0.337	16.035890	-22.108834	-1690.31	-1247.11
4	BAD	766779696	10.87	20957	-0.373	-0.382	0.344	0.643	15.056781	-21.415428	1964.66	645.23
5	GUIDE	766783464	9.20	22034	-0.075	-0.314	0.089	0.140	15.041422	-22.197983	-563.80	1887.50
6	GUIDE	766777184	7.87	22040	0.406	0.240	0.093	0.138	15.615560	-21.610598	532.45	-748.18
7	GUIDE	766779344	10.03	22009	-0.269	-0.149	0.130	0.207	15.380905	-21.452302	1383.02	-280.93

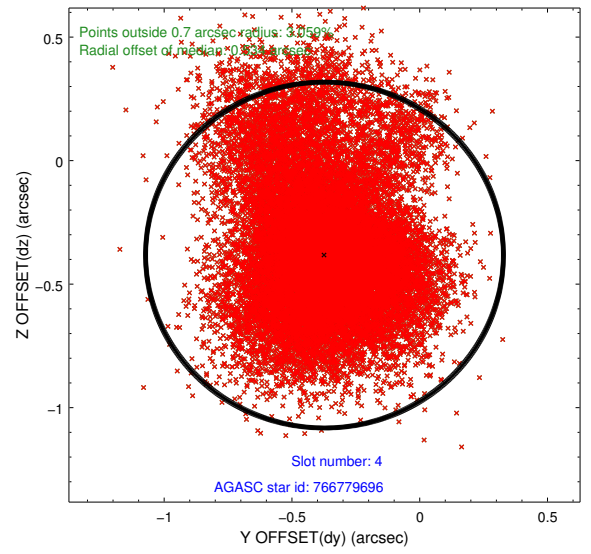
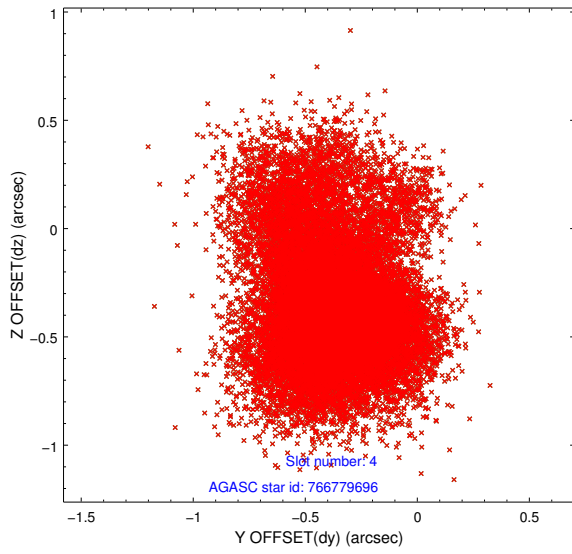
∞

2.4 Star Slots

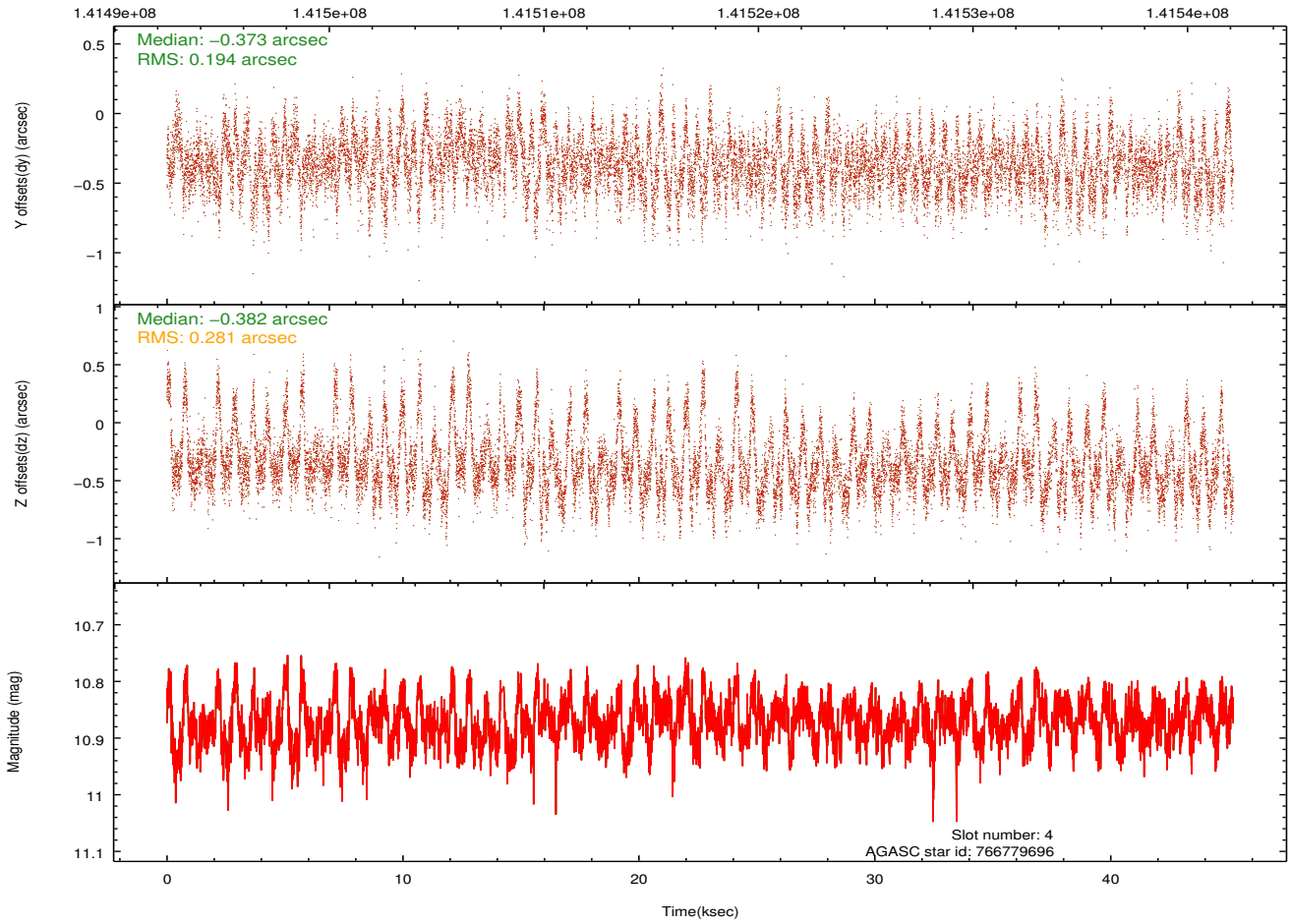
2.4.1 Slot 3



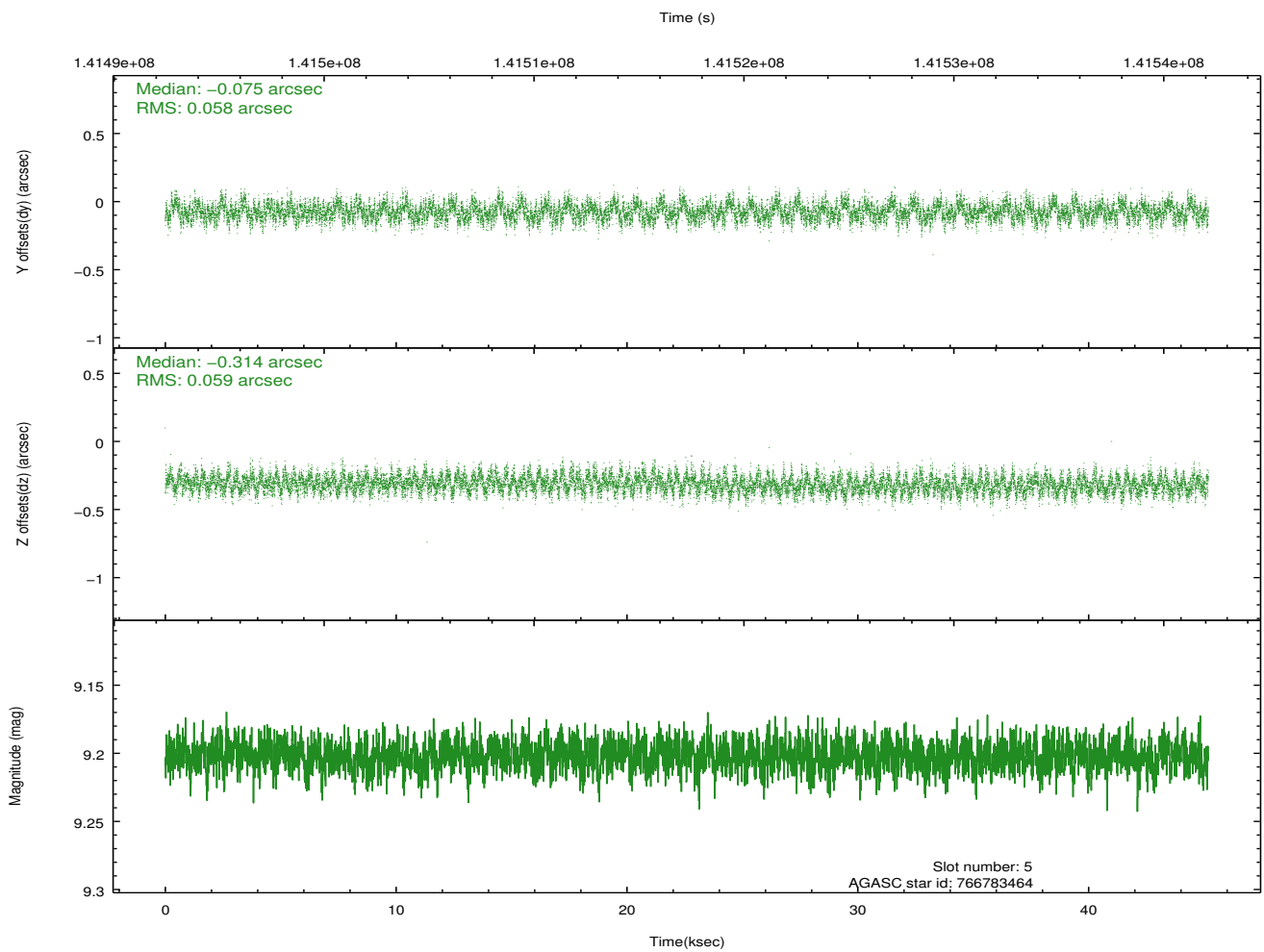
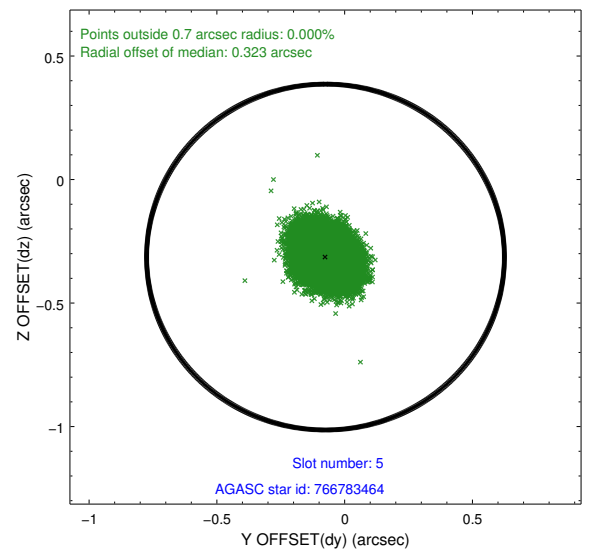
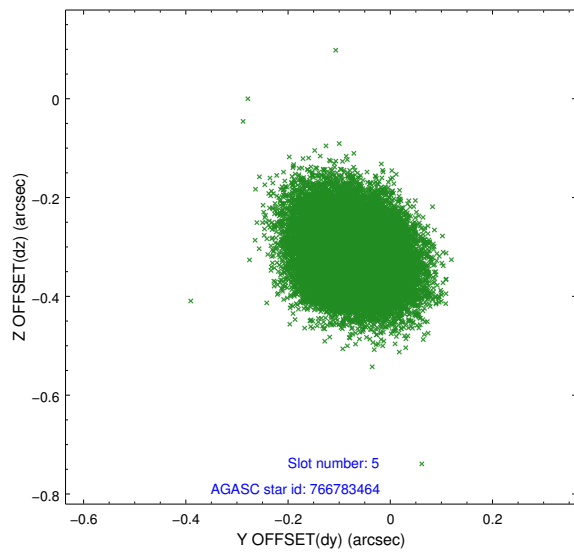
2.4.2 Slot 4



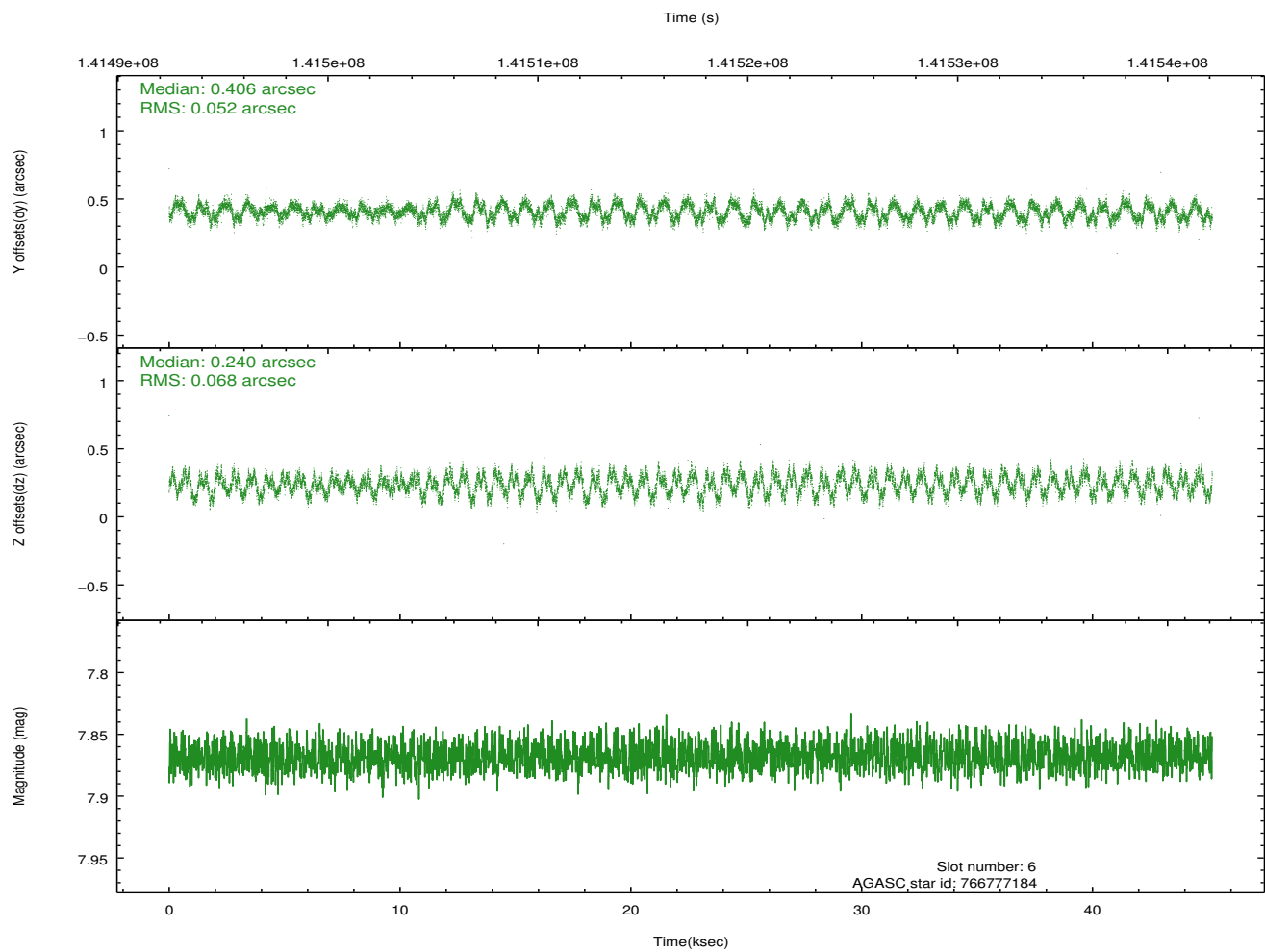
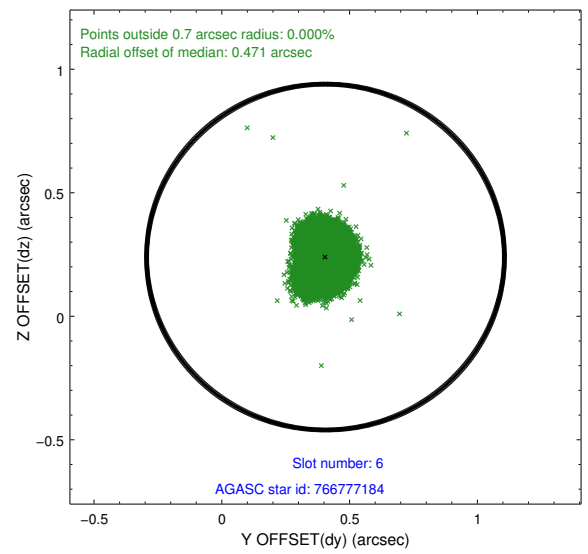
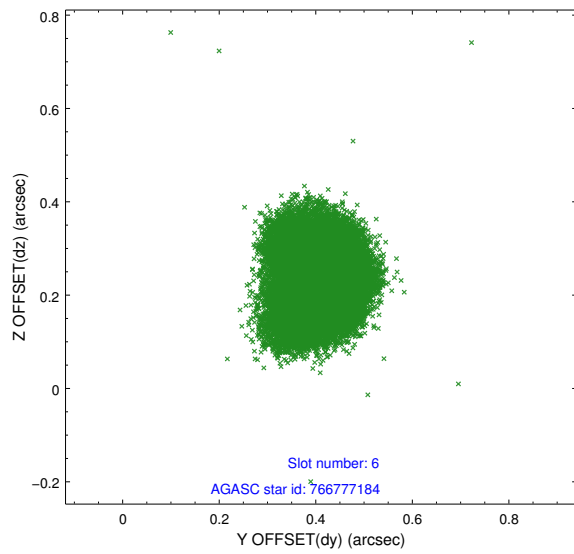
Time (s)



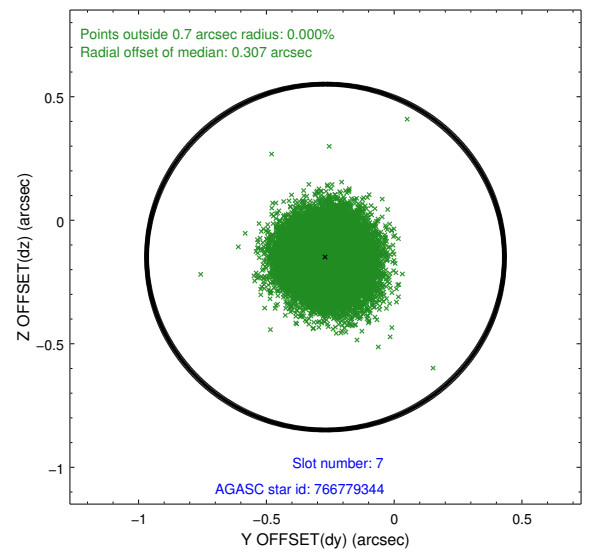
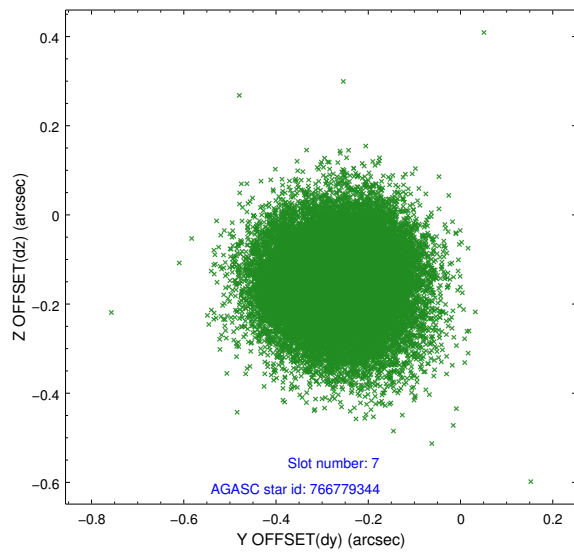
2.4.3 Slot 5



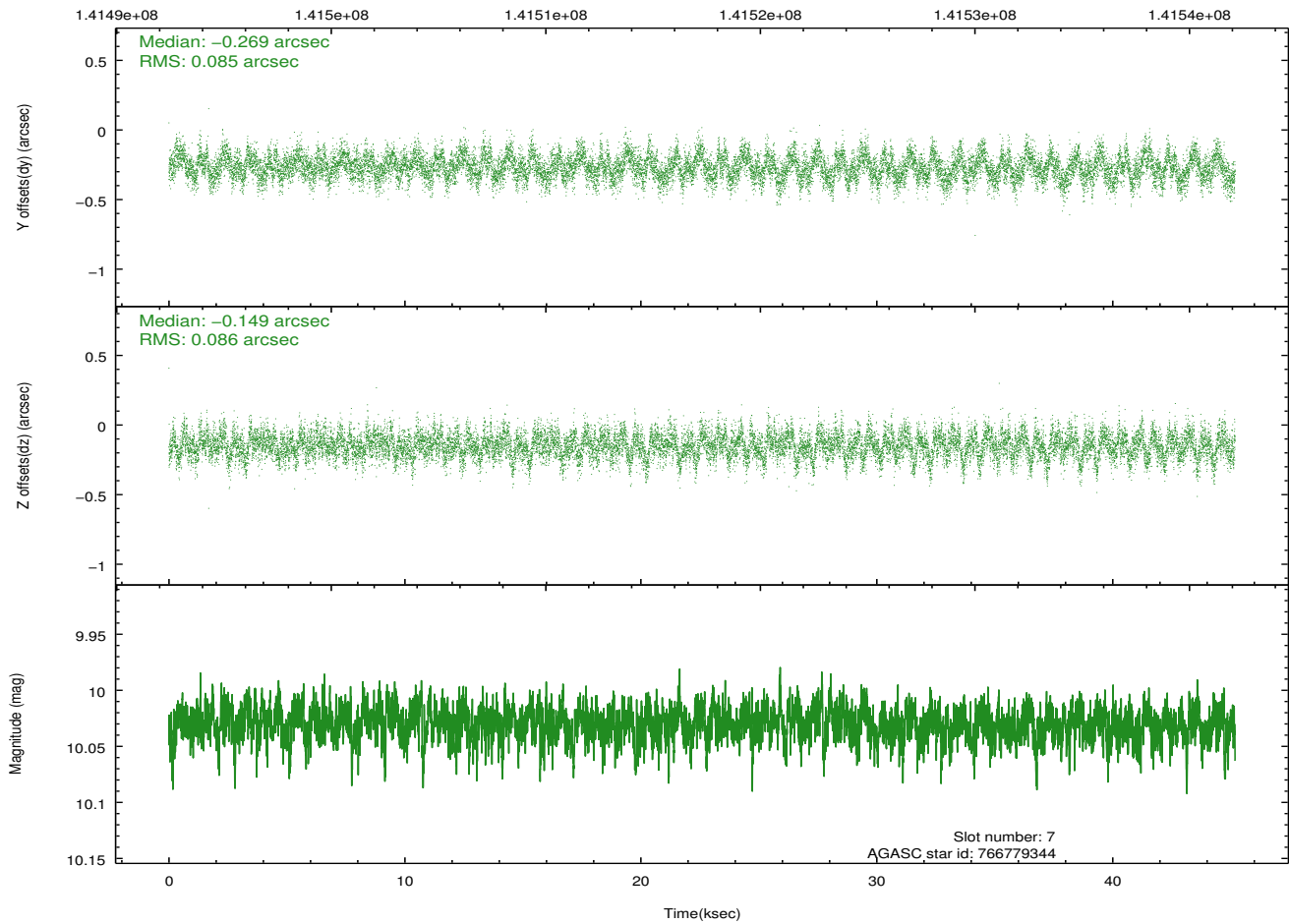
2.4.4 Slot 6



2.4.5 Slot 7

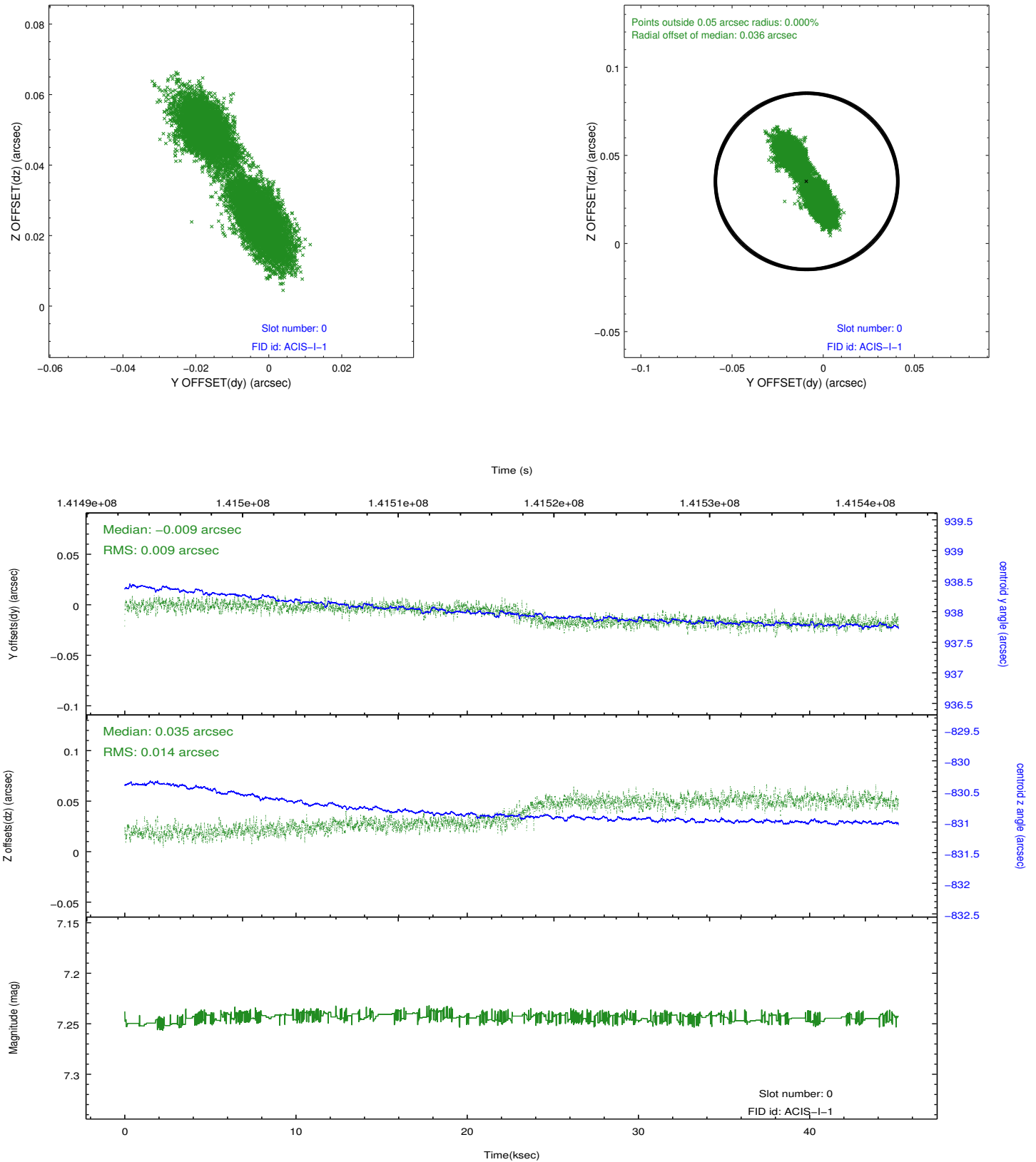


Time (s)

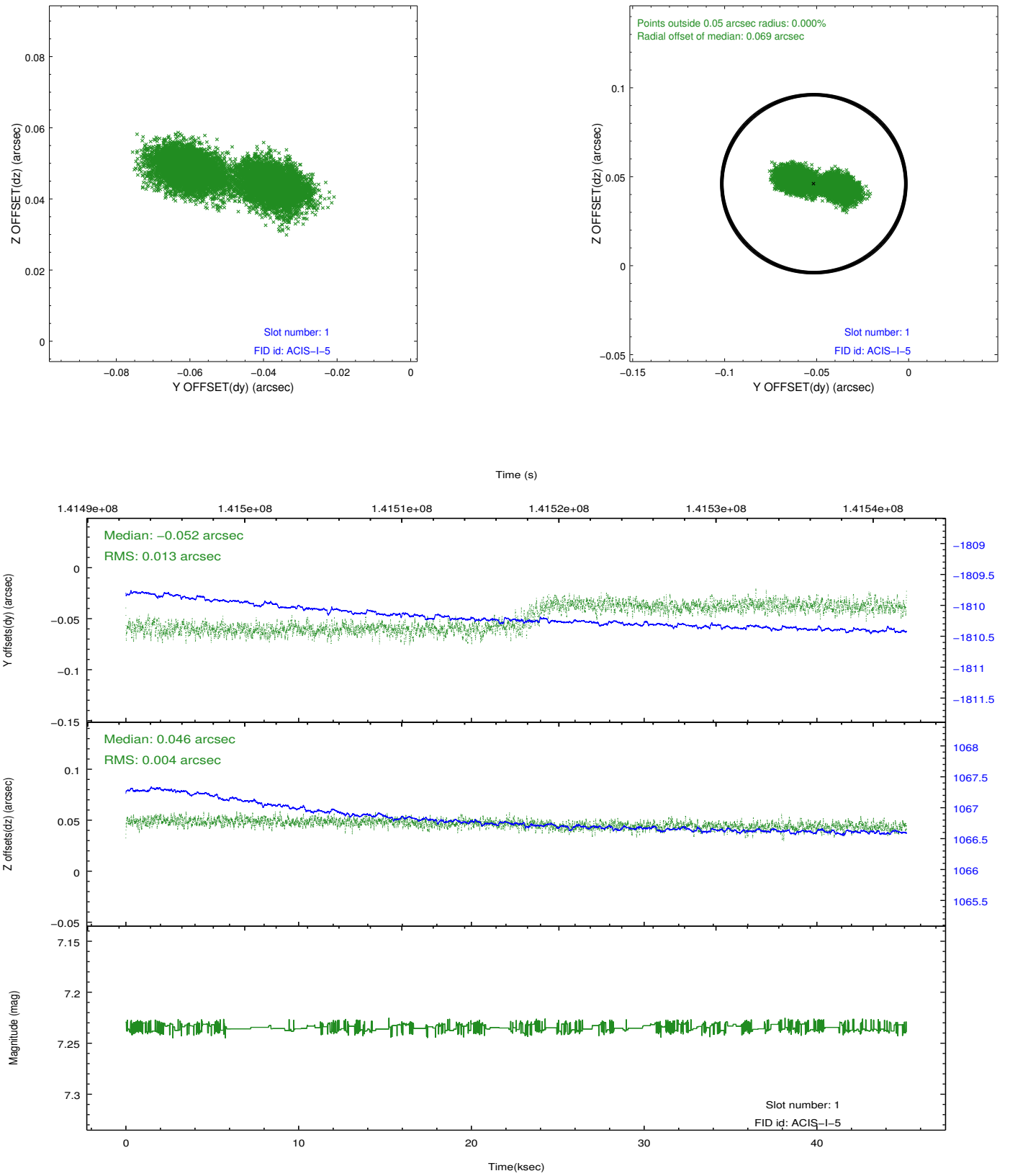


2.5 FID Slots

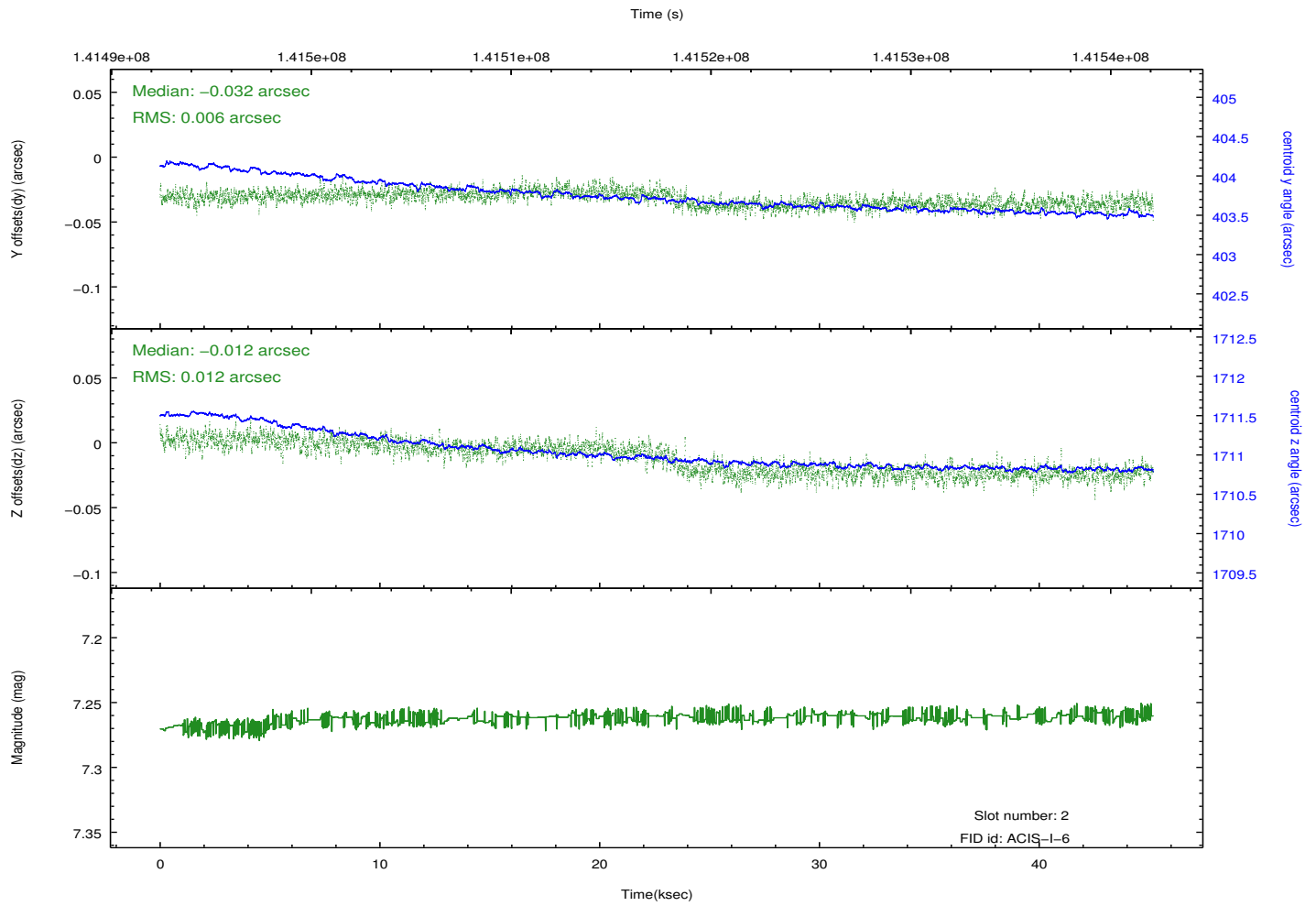
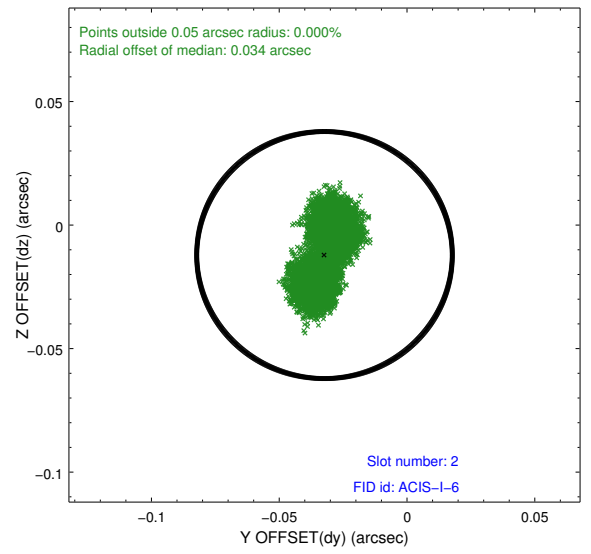
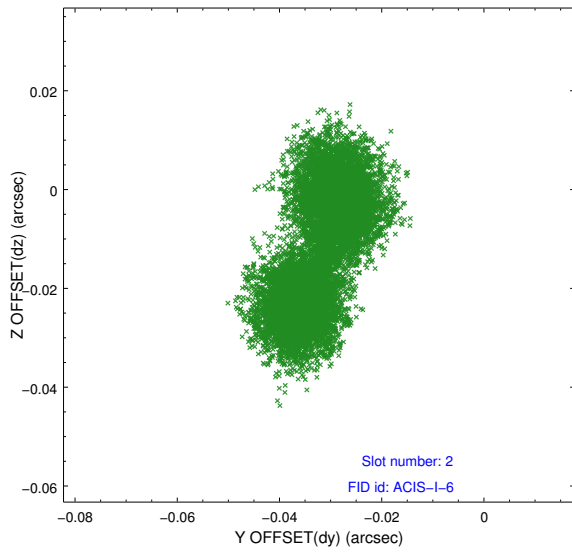
2.5.1 Slot 0



2.5.2 Slot 1



2.5.3 Slot 2



A Summary

A.1 Status

V&V Scientist	Jen Lauer
V&V Date (YYYY-MM-DD)	2012.10.19
V&V Edition	1
V&V Disposition and Status	OK
V&V Charge Time	45.176

A.2 Comments

Slot 4 was automatically excluded from aspect solution due to poor data quality. The aspect solution is not degraded by the removal of this guide star from the solution.