

V&V Reference Report

L2 ASCDS Version : 8.4.5

Observation 3770 - L2 Version 3
Chandra X-Ray Center

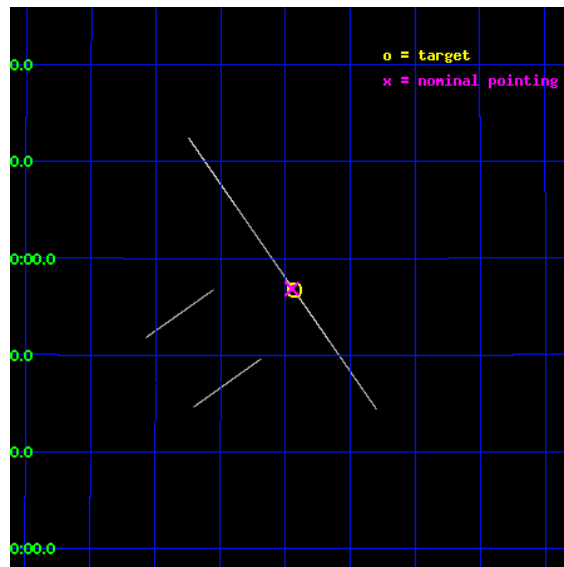
L2 Processing Date : Oct 23 2012

Contents

1	Front	2
2	OBI	3
2.1	OBI	3
2.1.1	Images	3
2.1.2	Bias	3
2.1.3	Parameters	4
2.1.4	Events	4
2.2	Compared Parameters	5
2.3	Aspect	6
2.4	Star Slots	9
2.4.1	Slot 3	9
2.4.2	Slot 4	10
2.4.3	Slot 5	11
2.4.4	Slot 6	12
2.4.5	Slot 7	13
2.5	FID Slots	14
2.5.1	Slot 0	14
2.5.2	Slot 1	15
2.5.3	Slot 2	16
A	Summary	17
A.1	Status	17
A.2	Comments	17

1 Front

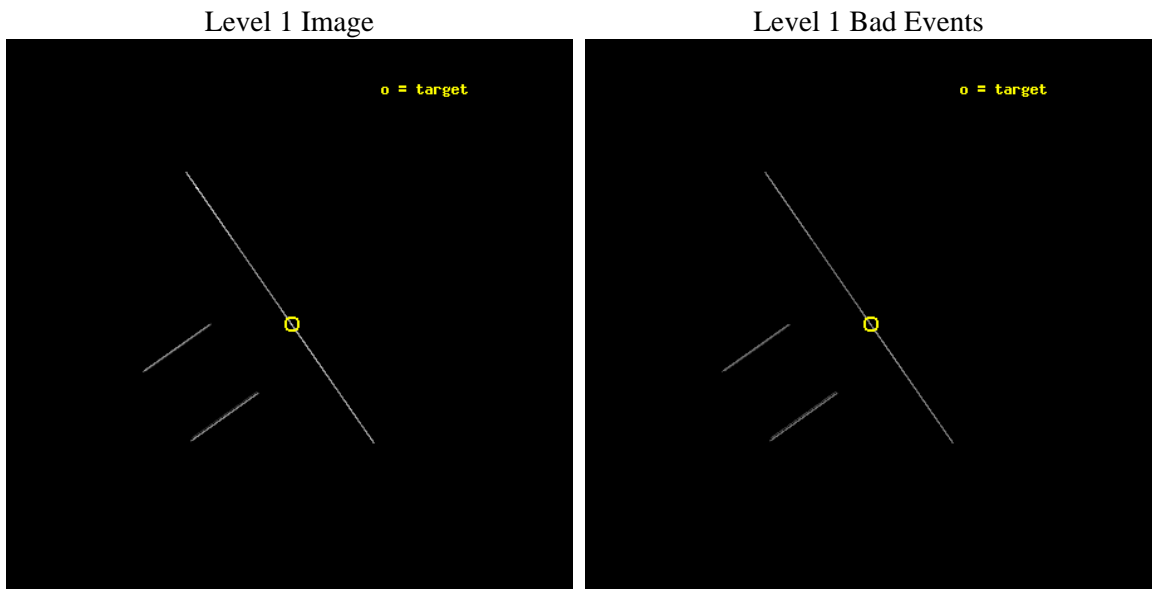
seq_num	300095	Sequence number
obs_id	3770	Observation id
title	TIMING THE ORBIT OF RX J1914.4+2456: GRAVITATIONAL RADIATION AND THE NATURE OF THE X-RAY EMISSION	Proposal title
observer	Dr. Tod Strohmayer	Principal investigator
object	RX J1914.4+2456	Source name
ra_targ	288.60875	Observer's specified target RA [deg]
dec_targ	24.945444	Observer's specified target Dec [deg]
ra_nom	288.61279643334	Nominal RA [deg]
dec_nom	24.947745231275	Nominal Dec [deg]
roll_nom	54.924151894549	Nominal Roll [deg]
revision	3	Processing version of data
ontime	35473.0	Sum of GTIs [s]
livetime	35334.43359375	Livetime [s]
ontime2	35473.0	Sum of GTIs [s]
ontime3	35473.0	Sum of GTIs [s]
ontime5	35473.0	Sum of GTIs [s]
ontime6	35473.0	Sum of GTIs [s]
ontime7	35473.0	Sum of GTIs [s]
ontime8	35473.0	Sum of GTIs [s]
l2events	390188	Number of level 2 events



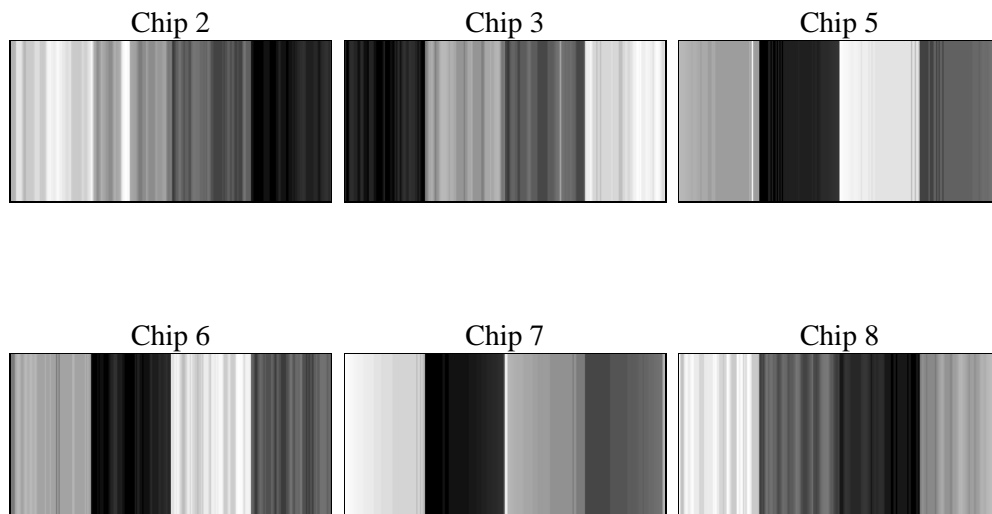
2 OBI

2.1 OBI

2.1.1 Images



2.1.2 Bias



2.1.3 Parameters

obi_num	0	Obi number	sched_exp_time	35000.000000	[s] Scheduled observation exposure time
ascdsver	8.4.5	Processing system revision	ontime	35473.0	Sum of GTIs [s]
caldbver	4.5.2	 	ontime2	35473.0	Sum of GTIs [s]
date	2012-10-23T09:37:25	Date and time of file creation	ontime3	35473.0	Sum of GTIs [s]
revision	3	Processing version of data	ontime5	35473.0	Sum of GTIs [s]
			ontime6	35473.0	Sum of GTIs [s]
			ontime7	35473.0	Sum of GTIs [s]
			ontime8	35473.0	Sum of GTIs [s]
			l1events	636908	Number of level 1 events

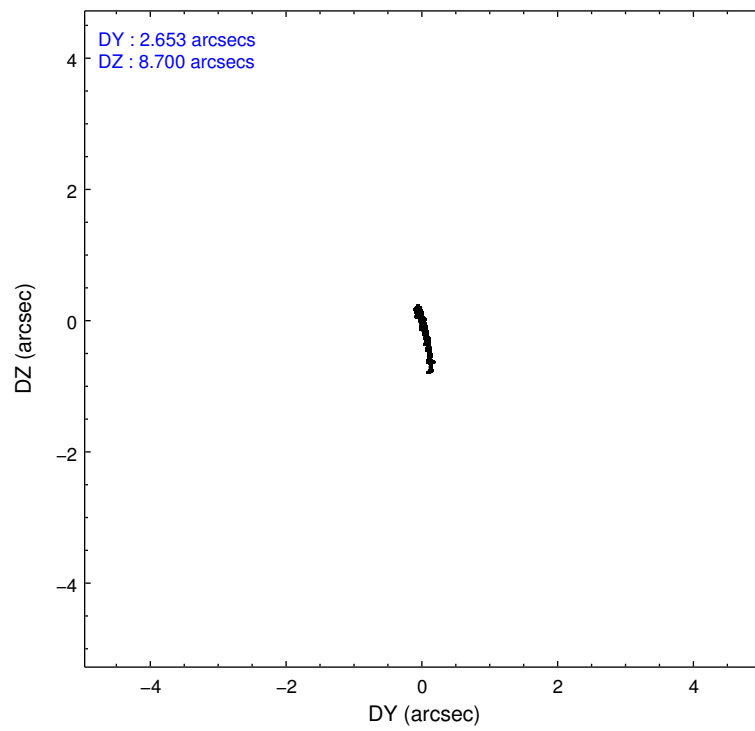
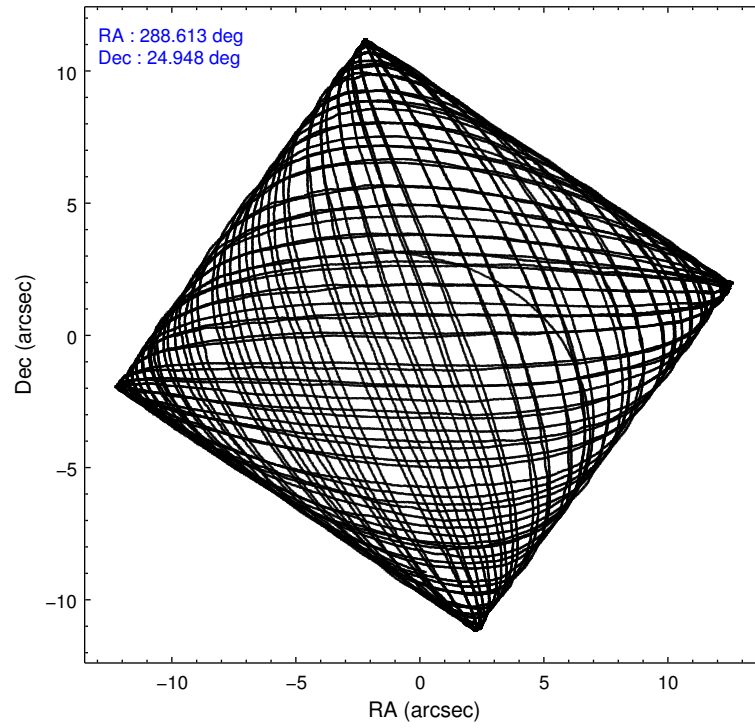
2.1.4 Events

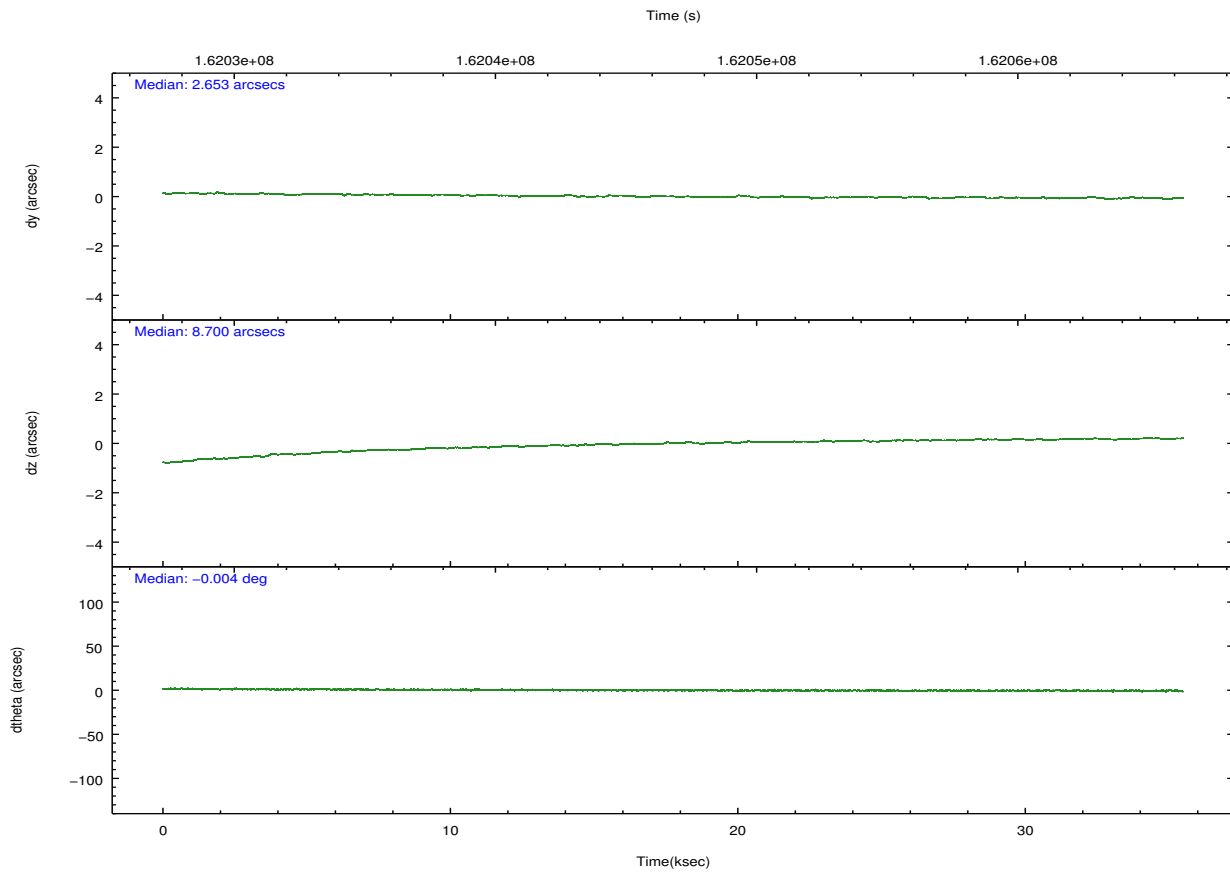
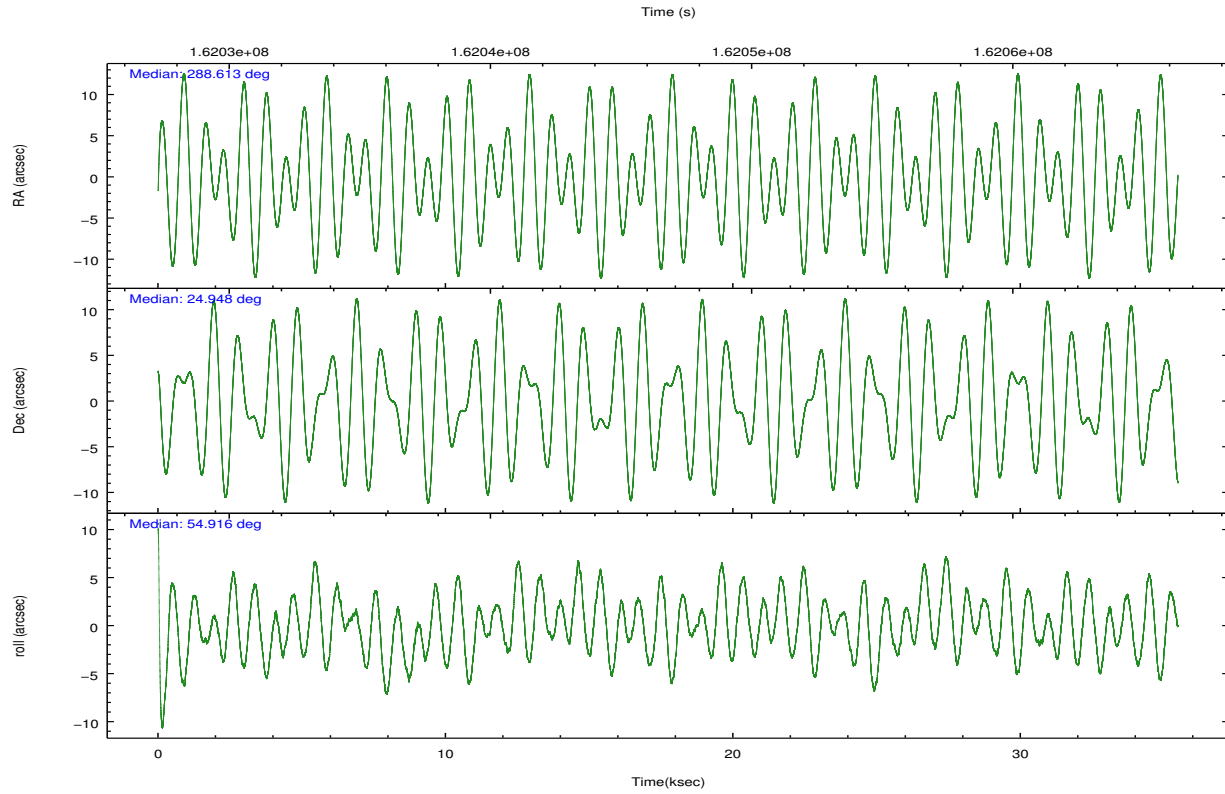
	ccd 2	ccd 3	ccd 5	ccd 6	ccd 7	ccd 8		ccd 2	ccd 3	ccd 5	ccd 6	ccd 7	ccd 8
level 1 events	44220	47765	259644	47173	148660	89446	grade 0 events	5421	5276	83360	4774	13849	14310
rejected events	8549	9391	24471	9561	26251	14341		12%	11%	32%	10%	9%	15%
rejected %	19%	19%	9%	20%	17%	16%	grade 1 events	169	169	335	133	354	323
								0%	0%	0%	0%	0%	0%
							grade 2 events	13127	14653	61277	14223	30270	24191
								29%	30%	23%	30%	20%	27%
							grade 3 events	5121	5881	4803	5164	9597	8802
								11%	12%	1%	10%	6%	9%
							grade 4 events	5253	5167	4563	4924	9342	8681
								11%	10%	1%	10%	6%	9%
							grade 5 events	7787	8594	20525	8781	24005	12544
								17%	17%	7%	18%	16%	14%
							grade 6 events	7342	8025	84781	9174	61243	20595
								16%	16%	32%	19%	41%	23%
							grade 7 events	0	0	0	0	0	0
								0%	0%	0%	0%	0%	0%

2.2 Compared Parameters

Parameter	Planned	Actual	Parameter	Planned	Actual
Instrument	ACIS	ACIS	Obspar format version number	7	7
Detector	ACIS-235678	ACIS-235678	Obspar file type	PREDICTED	ACTUAL
Grating	NONE	NONE	Obspar update status	NONE	UPDATED
Data mode	CC33_FAINT	CC33_FAINT	Number of optional ACIS chips dropped	0	0
Observation mode	POINTING	POINTING	On-chip summing requested	N	N
[deg] Pointing RA	288.610564	288.6127964333417	Subarray requested	NONE	NONE
[deg] Pointing Dec	24.920617	24.94774523127548	Alternating exposures requested	N	N
[deg] Pointing Roll	54.768461	54.92415189454903	[s] Primary exposure time	0.000000	0
[mm] SIM focus pos	-0.684267	-0.6828225247311905			
[mm] SIM defocus	0	0.001444936568705701			
[mm] SIM translation stage pos	-190.132523	-190.1400660498719			
[mm] SIM translation stage offset	0	0.00754346686406393			
[s] Observation start time (MET)	162029541.184000	162028431.29591			
Observation start date	2003-02-19T08:11:17	2003-02-19T07:53:51			
[s] Observation end time (MET)	162064541.184000	162065002.27244			
Observation end date	2003-02-19T17:54:37	2003-02-19T18:03:22			
Read mode	CONTINUOUS	CONTINUOUS			

2.3 Aspect



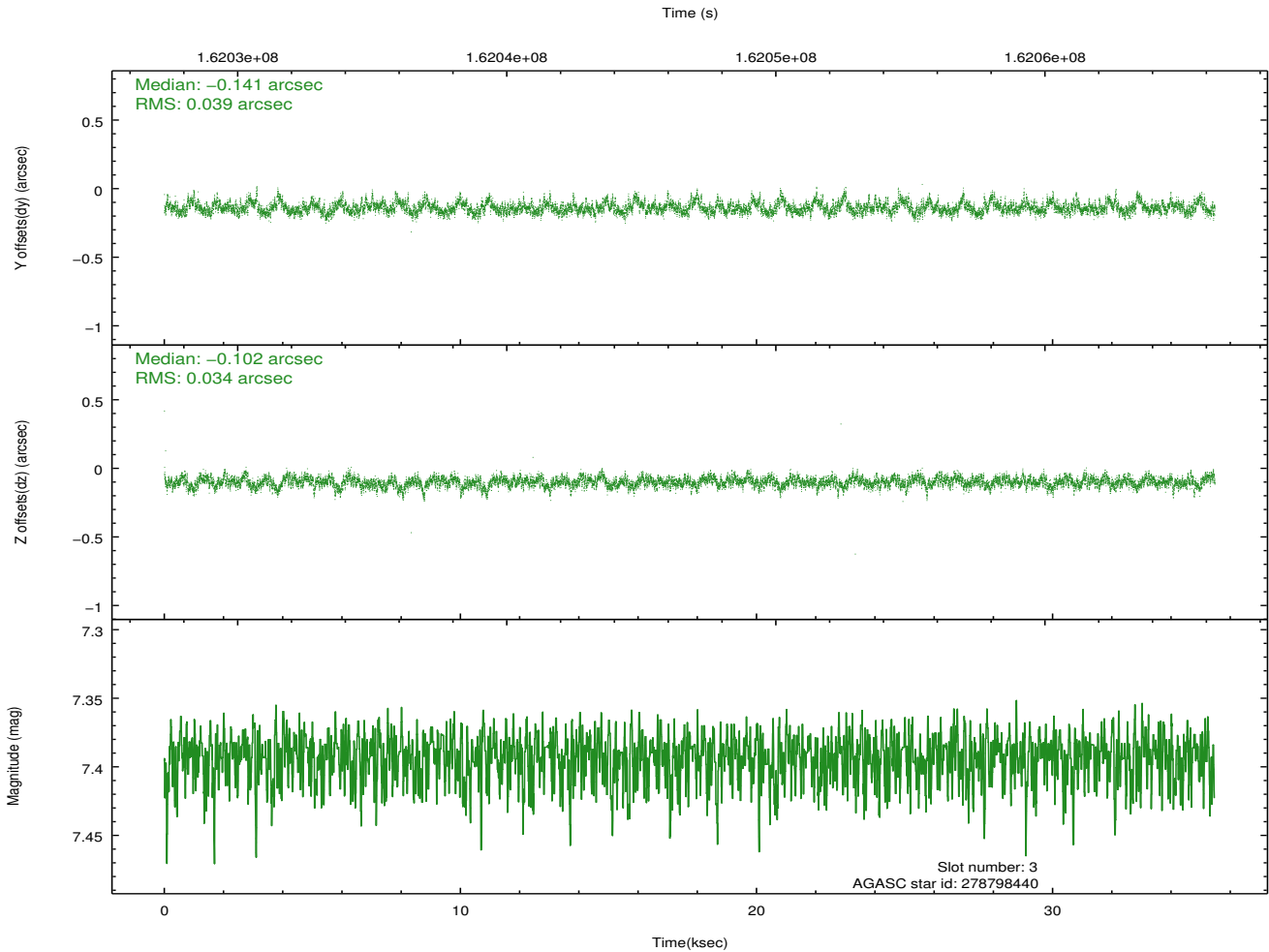
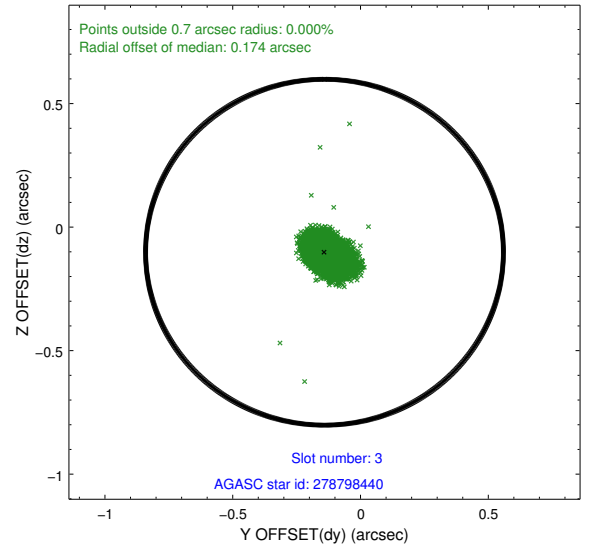
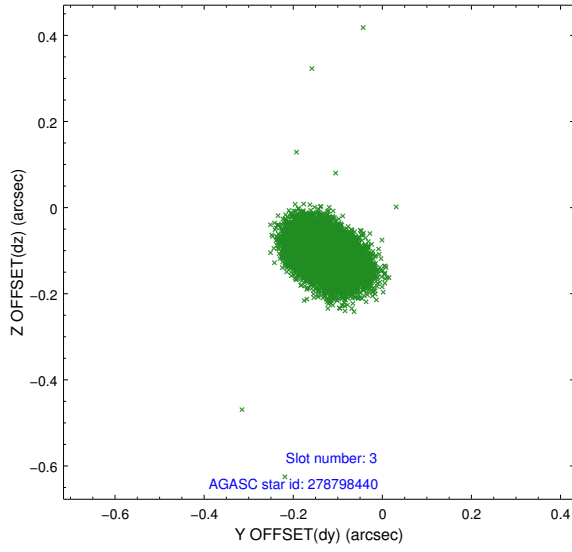


Slot Statistics

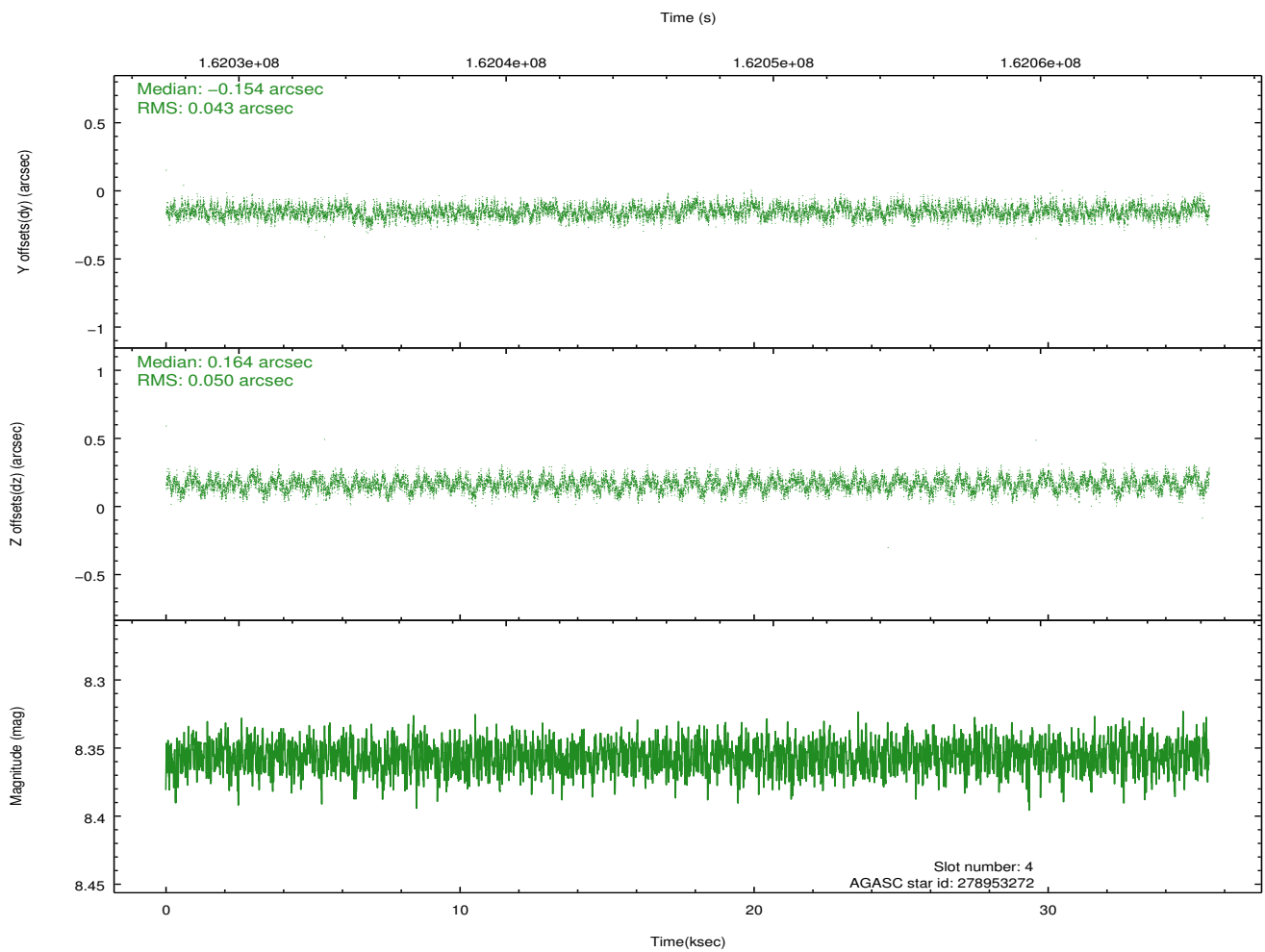
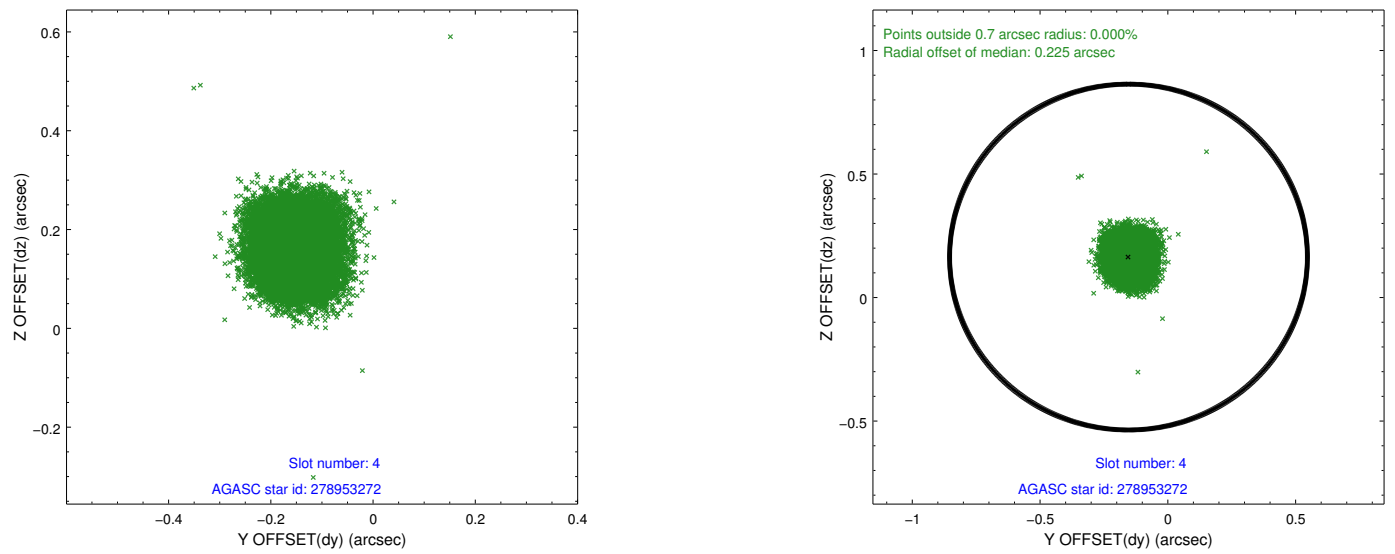
slot	status	id	mag	n_pts	med_dy	med_dz	dr1	dr2	ra	dec	mean_y	mean_z
0	FID	ACIS-S-2	7.10	8652	-0.022	-0.010	0.009	0.014	0.000000	0.000000	-755.32	-1729.84
1	FID	ACIS-S-4	7.20	8653	-0.014	0.013	0.006	0.011	0.000000	0.000000	2157.95	178.63
2	FID	ACIS-S-5	7.23	8652	0.004	0.006	0.008	0.014	0.000000	0.000000	-1808.09	172.33
3	GUIDE	278798440	7.39	17301	-0.141	-0.102	0.053	0.092	288.472447	25.758823	2206.55	2107.20
4	GUIDE	278953272	8.36	17301	-0.154	0.164	0.071	0.111	289.216166	24.729034	583.06	-2012.28
5	GUIDE	278266312	9.54	17293	0.134	0.030	0.092	0.149	288.641308	24.187100	-2098.08	-1606.05
6	GUIDE	278795448	8.96	17299	0.144	-0.203	0.101	0.163	287.699473	24.798355	-2069.12	2183.46
7	GUIDE	278806384	9.43	17295	0.027	0.113	0.095	0.158	288.649975	24.433815	-1356.65	-1116.24

2.4 Star Slots

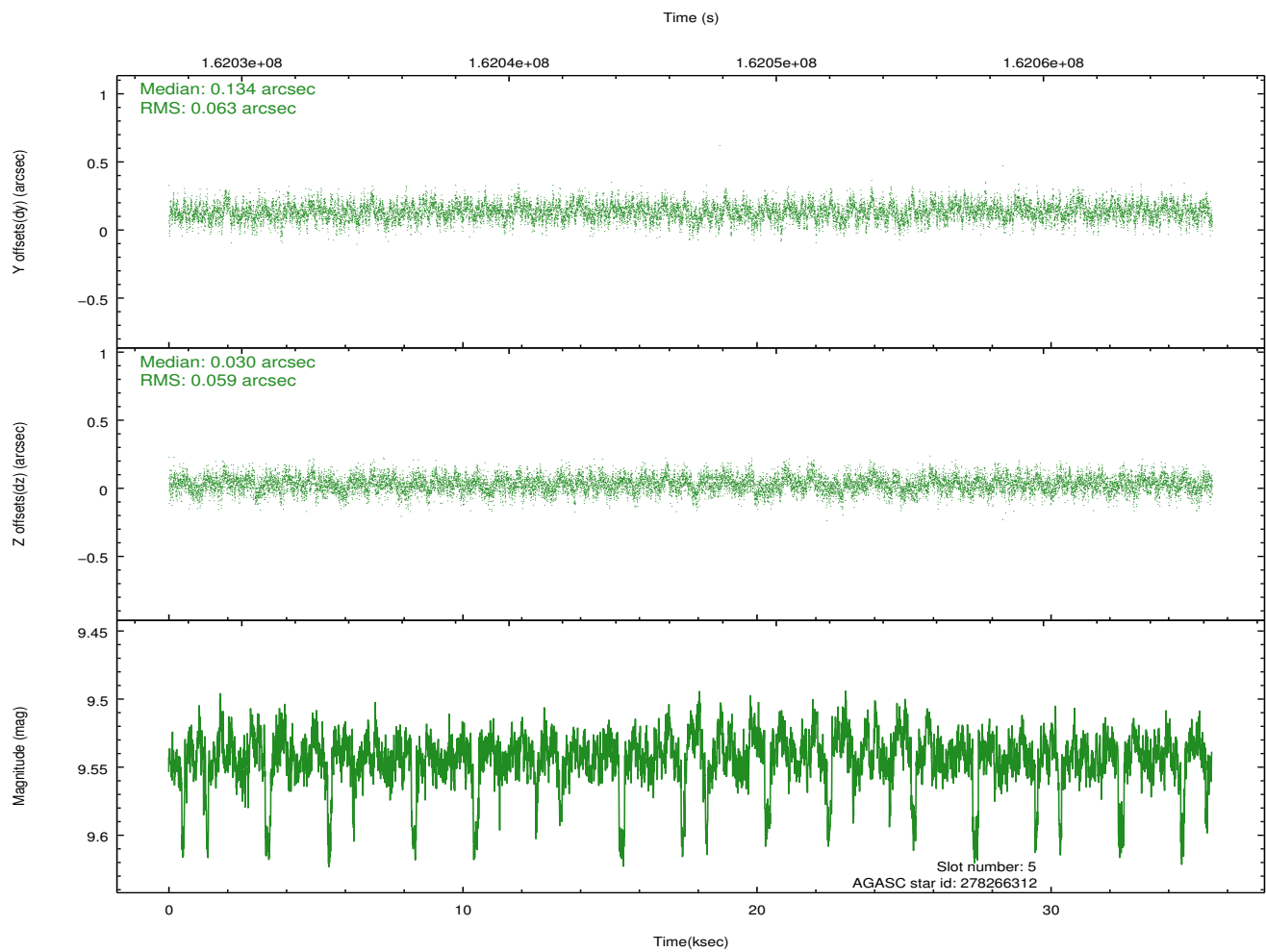
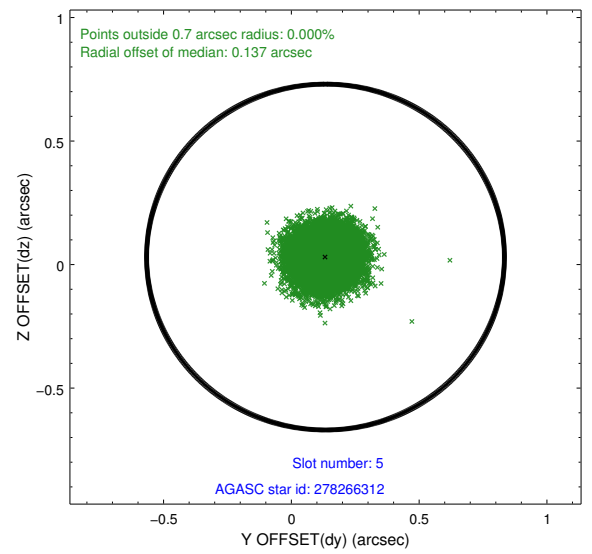
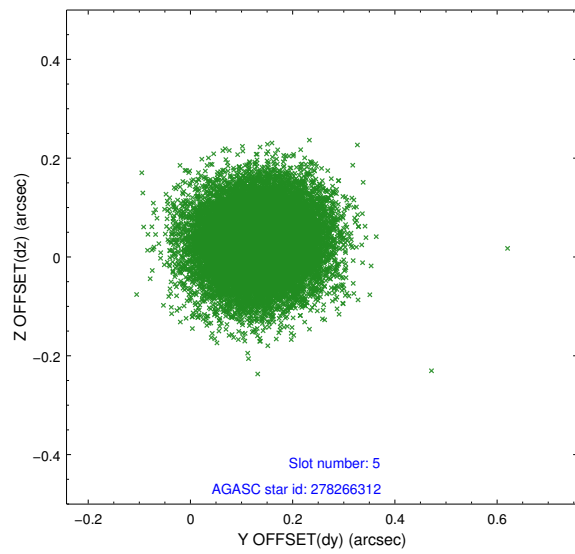
2.4.1 Slot 3



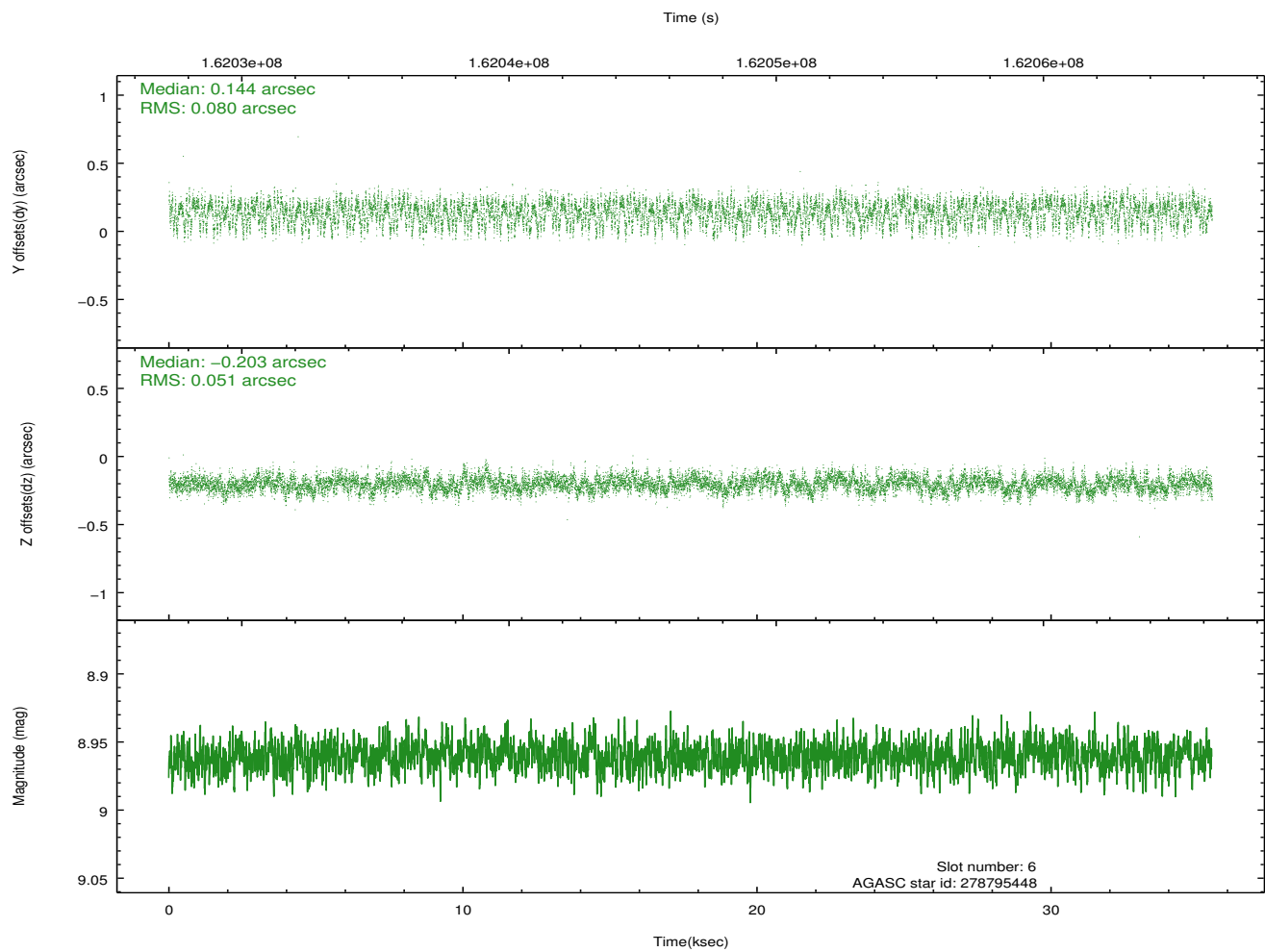
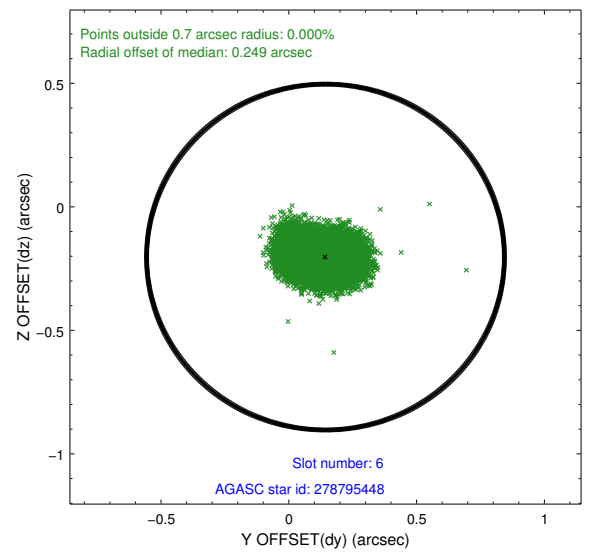
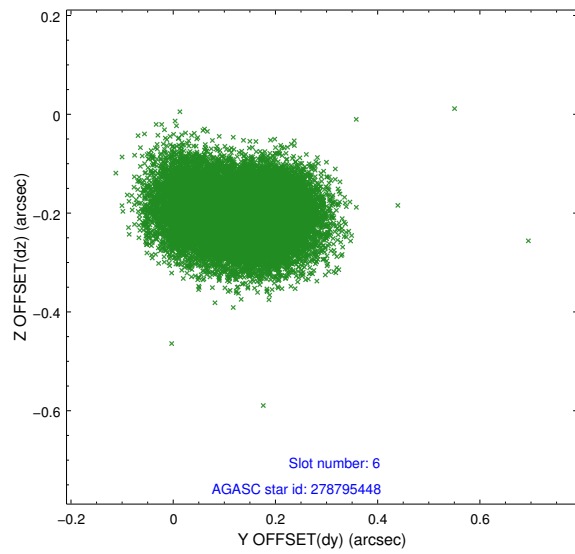
2.4.2 Slot 4



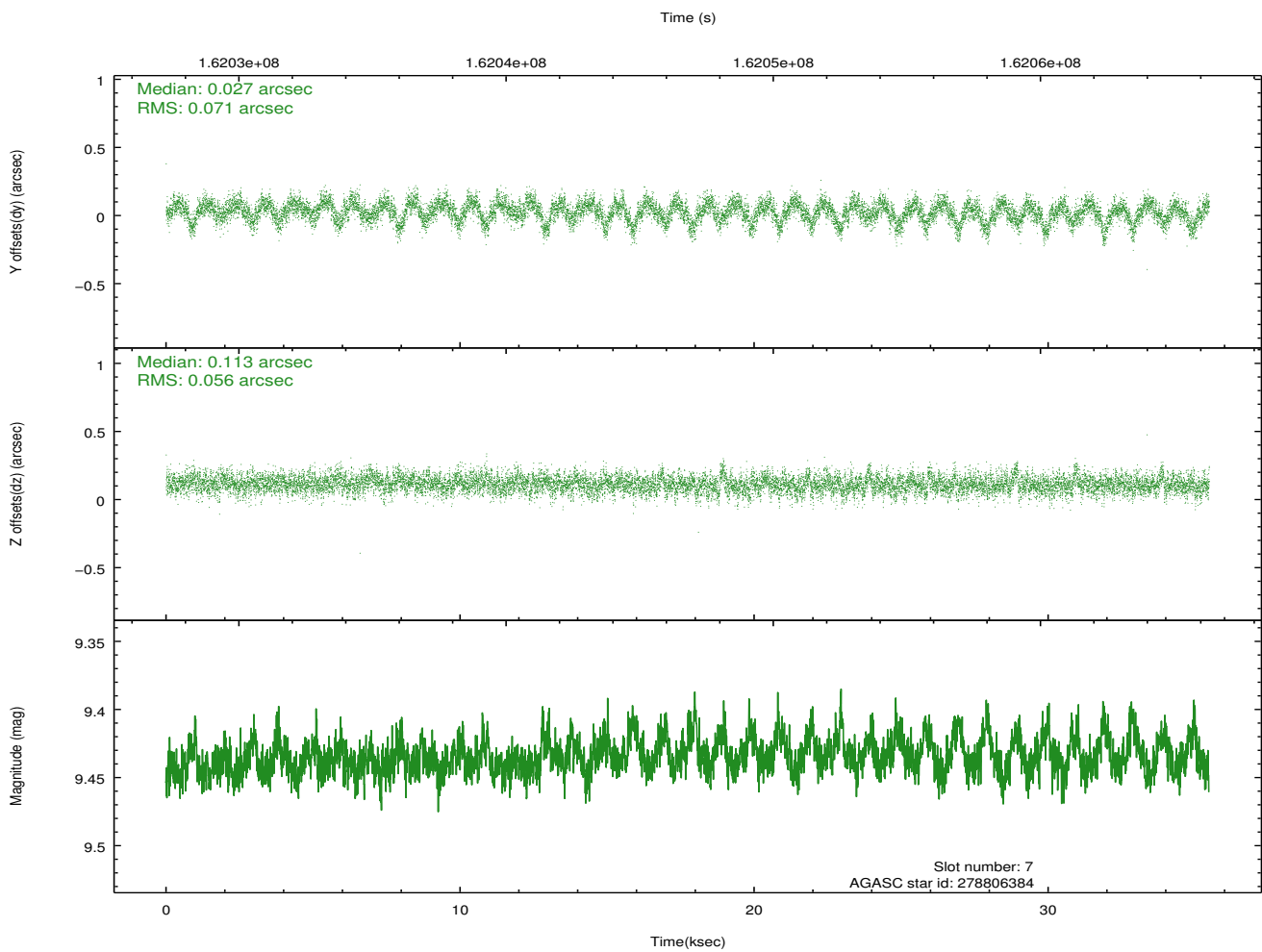
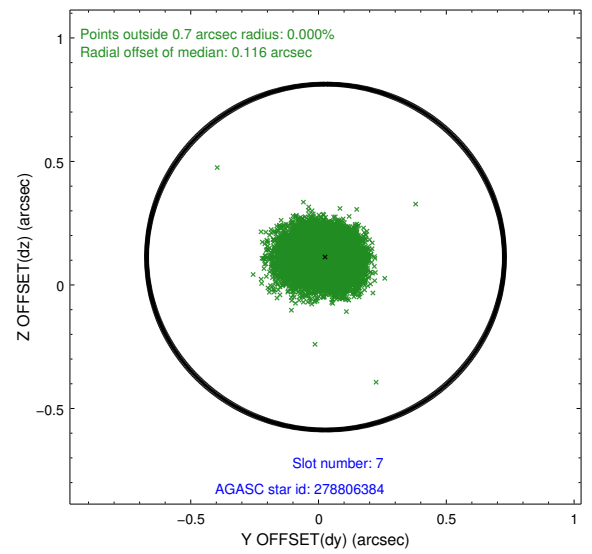
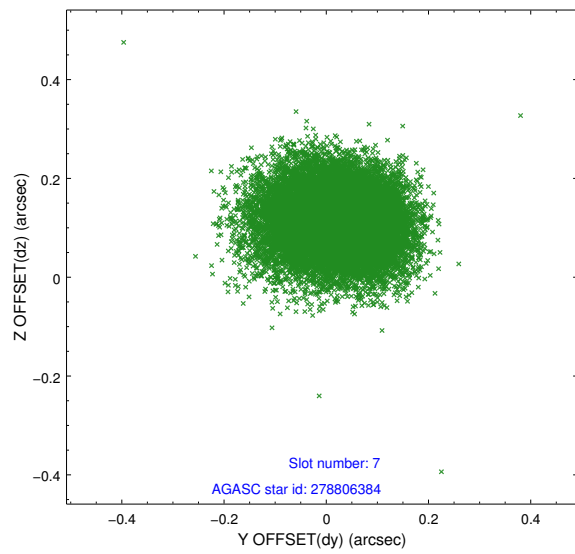
2.4.3 Slot 5



2.4.4 Slot 6

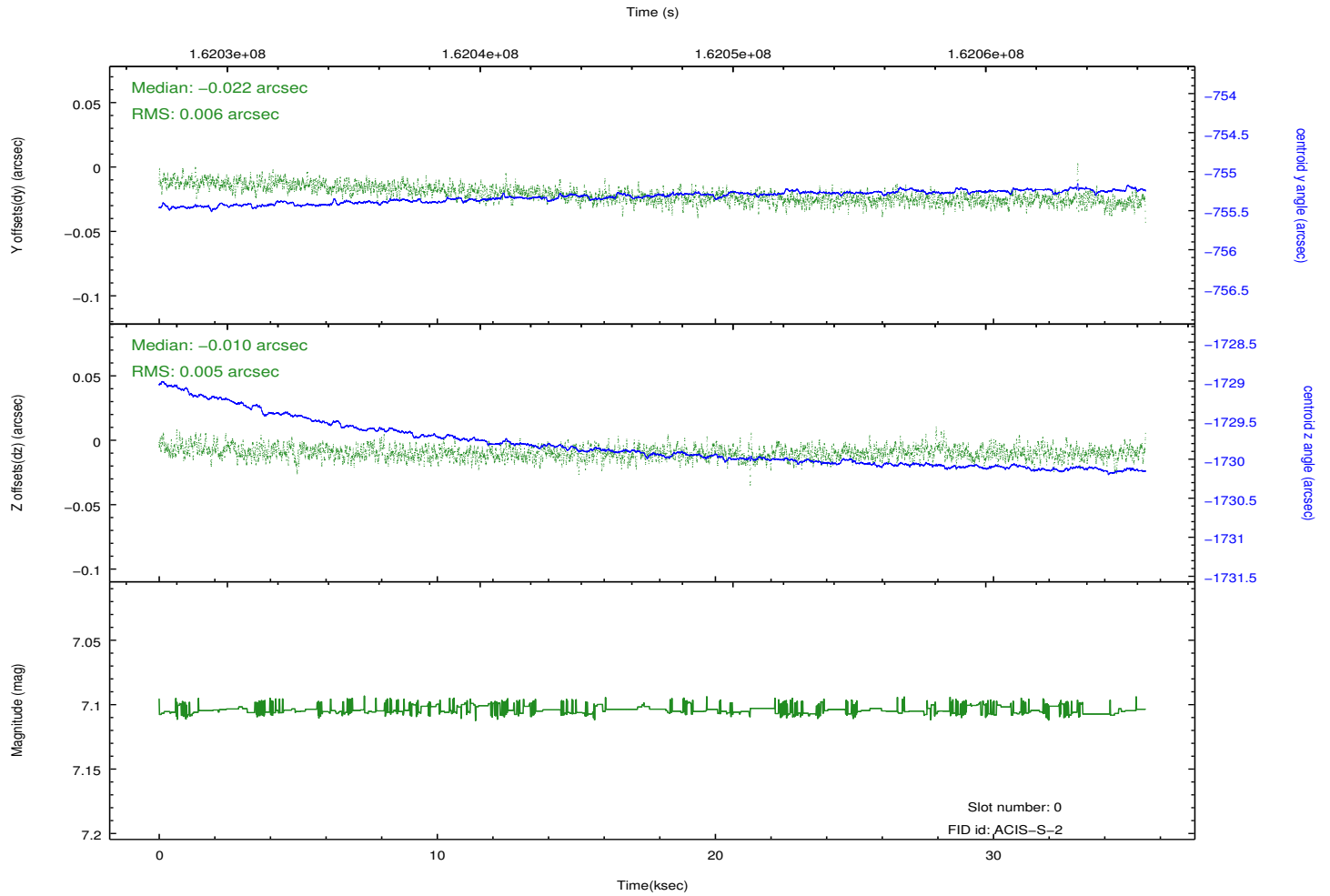
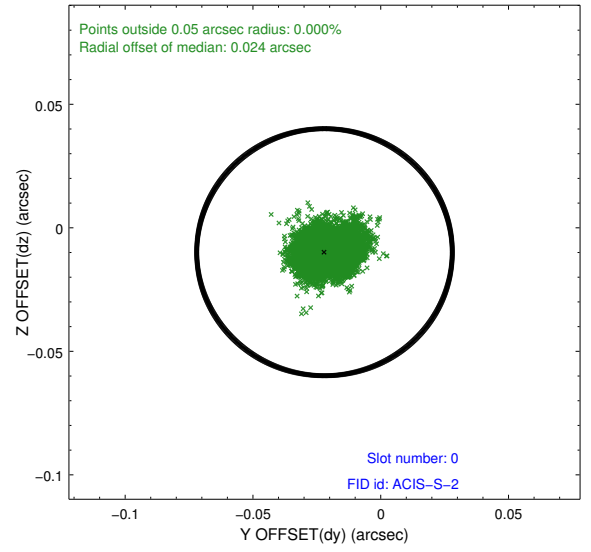
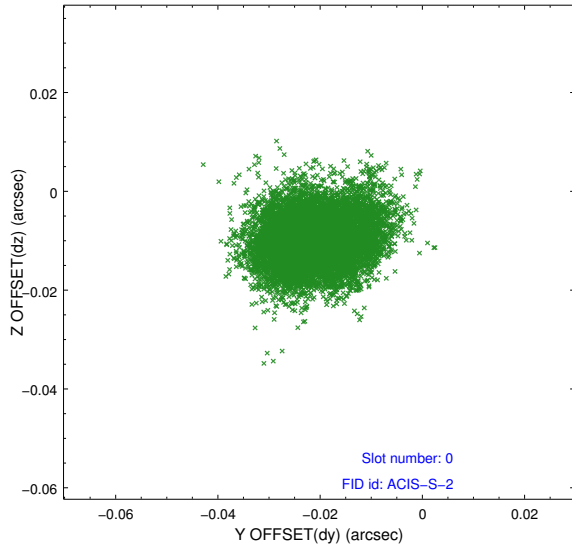


2.4.5 Slot 7

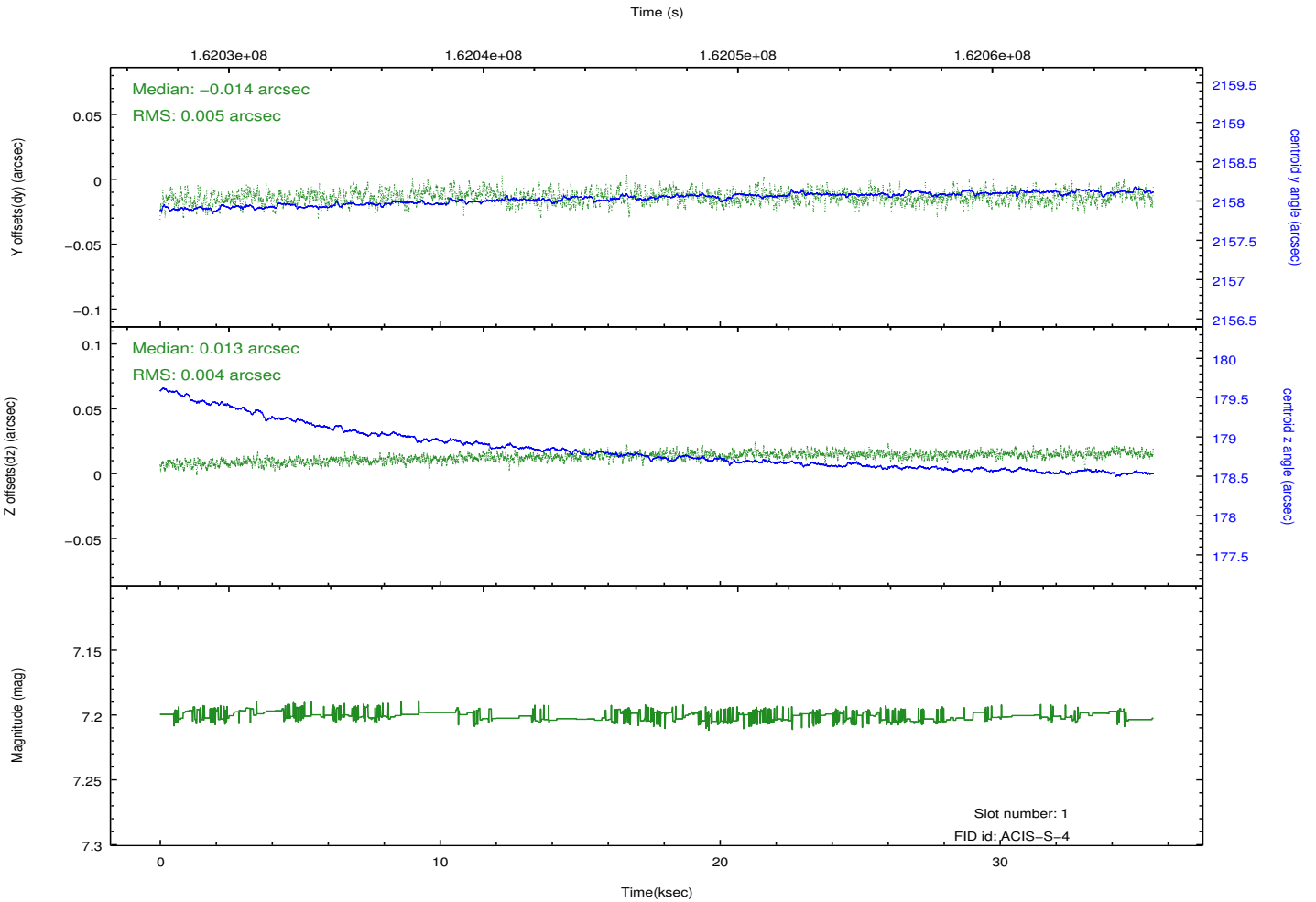
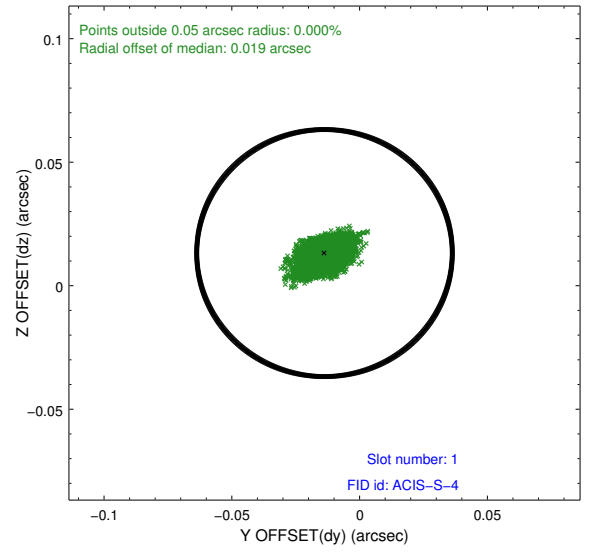
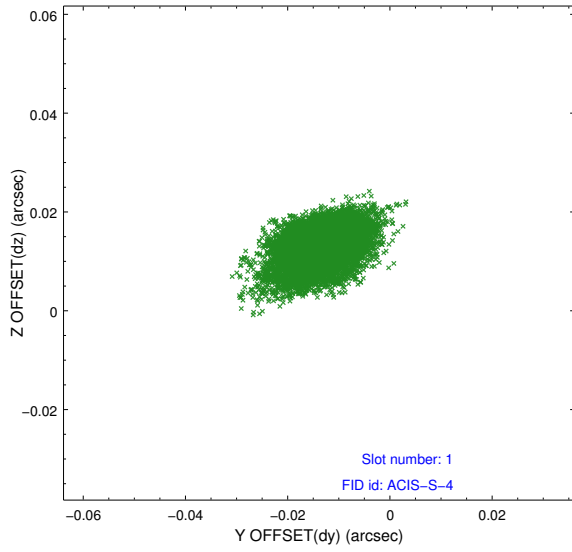


2.5 FID Slots

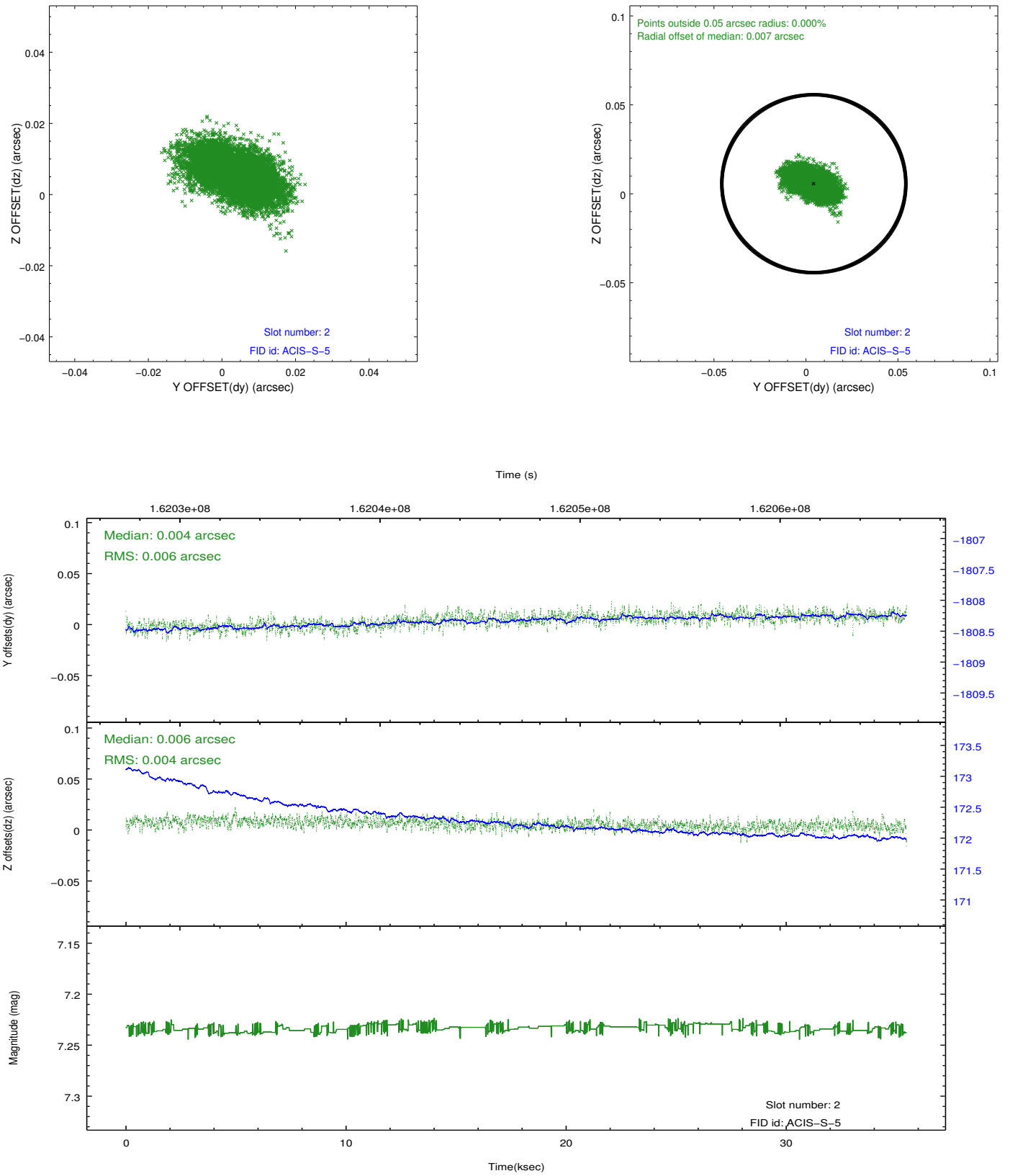
2.5.1 Slot 0



2.5.2 Slot 1



2.5.3 Slot 2



A Summary

A.1 Status

V&V Scientist	Joy Nichols
V&V Date (YYYY-MM-DD)	2012.11.06
V&V Edition	1
V&V Disposition and Status	OK
V&V Charge Time	35.476

A.2 Comments