

# V&V Reference Report

## L2 ASCDS Version : 8.4.5

Observation 3910 - L2 Version 3  
Chandra X-Ray Center

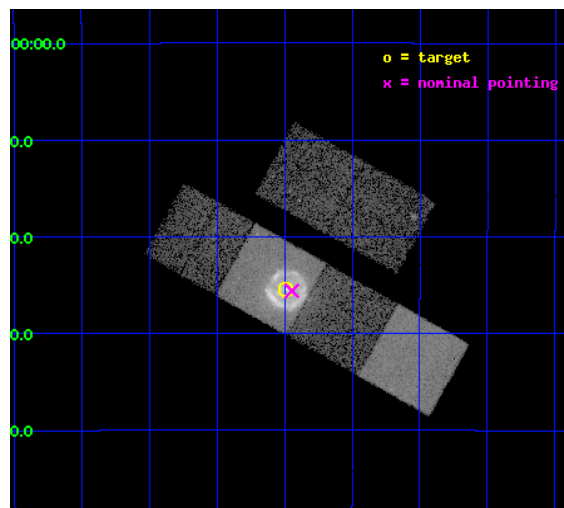
L2 Processing Date : Oct 31 2012

## Contents

<b>1</b>	<b>Front</b>	<b>2</b>
<b>2</b>	<b>OBI</b>	<b>3</b>
2.1	OBI . . . . .	3
2.1.1	Images . . . . .	3
2.1.2	Bias . . . . .	3
2.1.3	Parameters . . . . .	4
2.1.4	Events . . . . .	4
2.2	Compared Parameters . . . . .	5
2.3	Aspect . . . . .	6
2.4	Star Slots . . . . .	9
2.4.1	Slot 3 . . . . .	9
2.4.2	Slot 4 . . . . .	10
2.4.3	Slot 5 . . . . .	11
2.4.4	Slot 6 . . . . .	12
2.4.5	Slot 7 . . . . .	13
2.5	FID Slots . . . . .	14
2.5.1	Slot 0 . . . . .	14
2.5.2	Slot 1 . . . . .	15
2.5.3	Slot 2 . . . . .	16
<b>A</b>	<b>Summary</b>	<b>17</b>
A.1	Status . . . . .	17
A.2	Comments . . . . .	17

# 1 Front

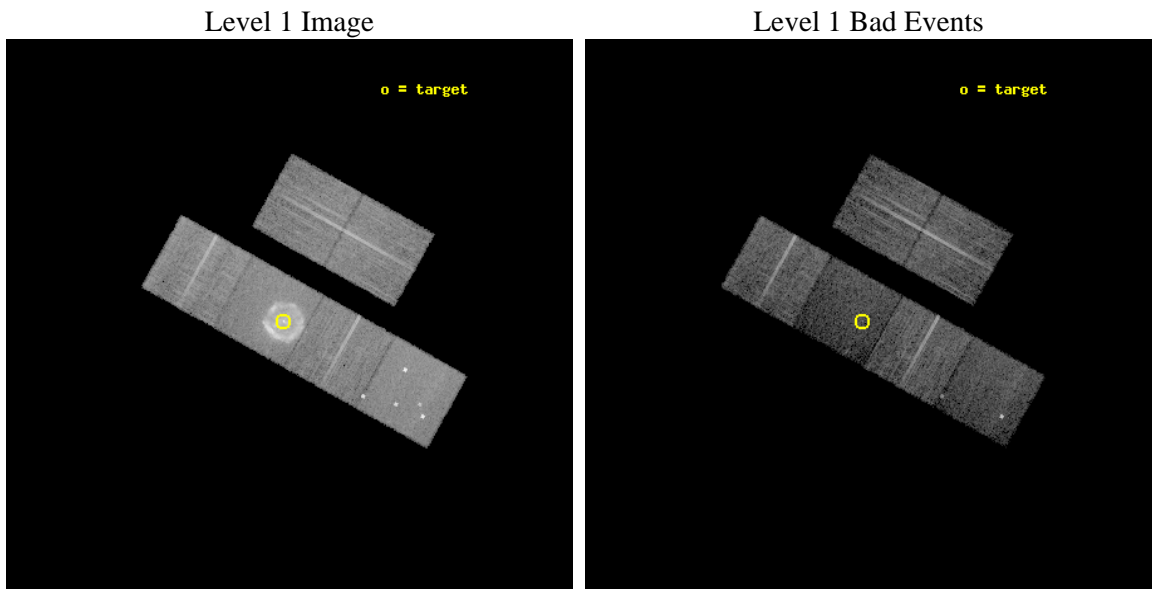
seq_num	500389	Sequence number
obs_id	3910	Observation id
title	THE DYNAMICS OF THE PULSAR WIND NEBULA IN G11.2-0.3	Proposal title
observer	Dr. Mallory Roberts	Principal investigator
object	G11.2-0.3	Source name
dtcycle	0	&#160
cycle	P	events from which exps? Prim/Second/Both
ra_targ	272.8725	Observer's specified target RA [deg]
dec_targ	-19.423611	Observer's specified target Dec [deg]
ra_nom	272.86164499951	Nominal RA [deg]
dec_nom	-19.426572975267	Nominal Dec [deg]
roll_nom	209.14368102445	Nominal Roll [deg]
revision	3	Processing version of data
ontime	13961.599947989	Sum of GTIs [s]
livetime	13784.809762781	Livetime [s]
ontime2	13961.599947989	Sum of GTIs [s]
ontime3	13958.35906741	Sum of GTIs [s]
ontime5	13961.599947989	Sum of GTIs [s]
ontime6	13961.599947989	Sum of GTIs [s]
ontime7	13961.599947989	Sum of GTIs [s]
ontime8	13958.358977735	Sum of GTIs [s]
l2events	172909	Number of level 2 events



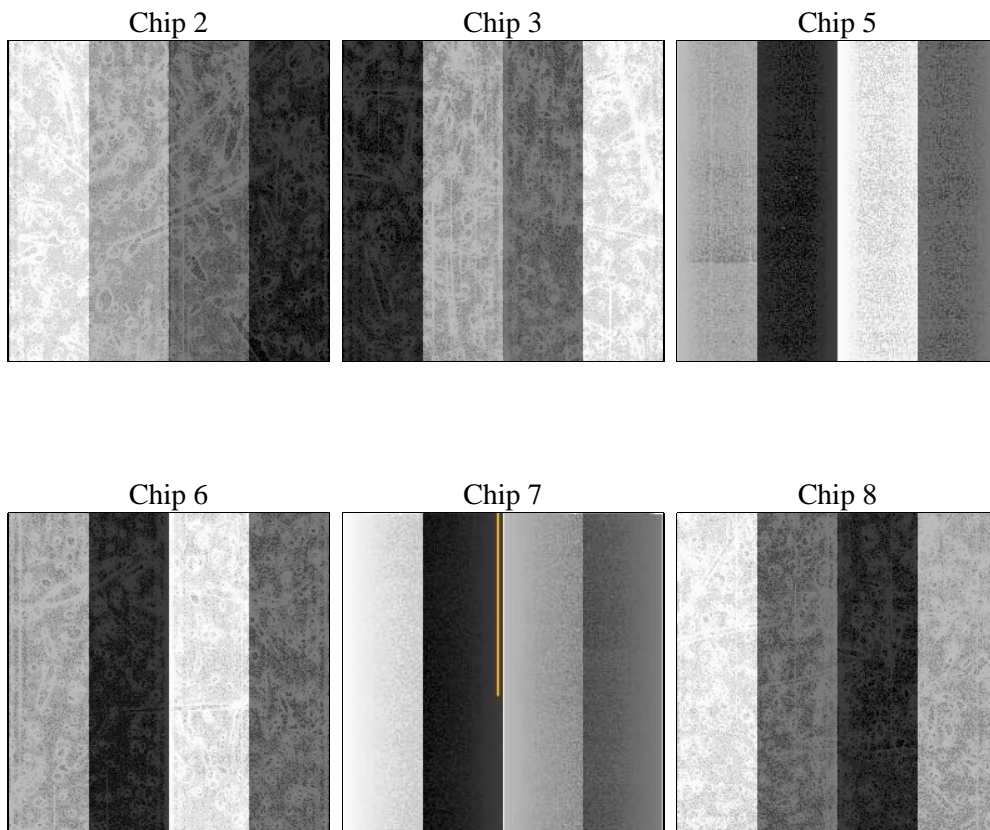
## 2 OBI

### 2.1 OBI

#### 2.1.1 Images



#### 2.1.2 Bias



### 2.1.3 Parameters

obi_num	1	Obi number	sched_exp_time	14000.000000	[s] Scheduled observation exposure time
ascdsver	8.4.5	Processing system revision	ontime	13961.599947989	Sum of GTIs [s]
caldbver	4.5.2	&#160	ontime2	13961.599947989	Sum of GTIs [s]
date	2012-10-31T03:49:33	Date and time of file creation	ontime3	13958.35906741	Sum of GTIs [s]
revision	3	Processing version of data	ontime5	13961.599947989	Sum of GTIs [s]
			ontime6	13961.599947989	Sum of GTIs [s]
			ontime7	13961.599947989	Sum of GTIs [s]
			ontime8	13958.358977735	Sum of GTIs [s]
			l1events	504311	Number of level 1 events

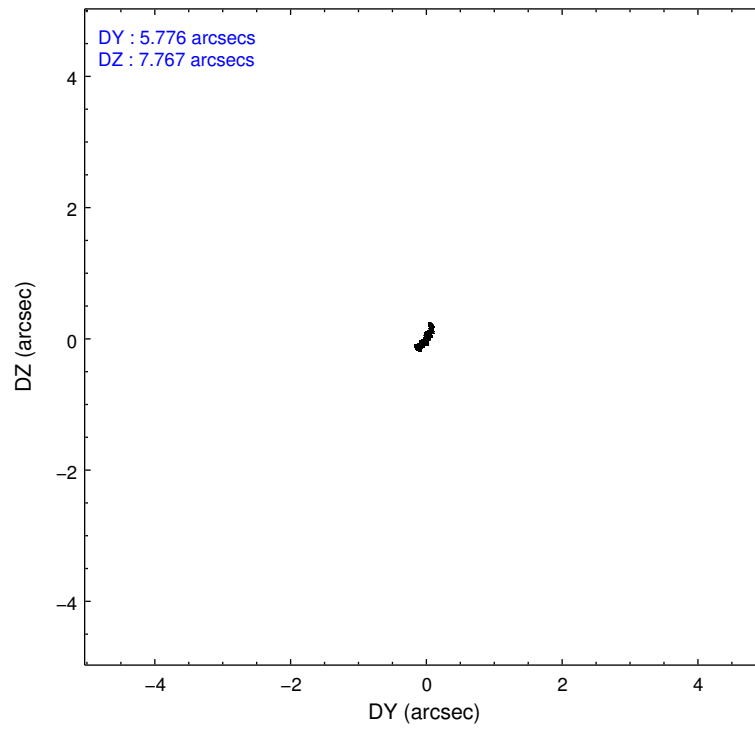
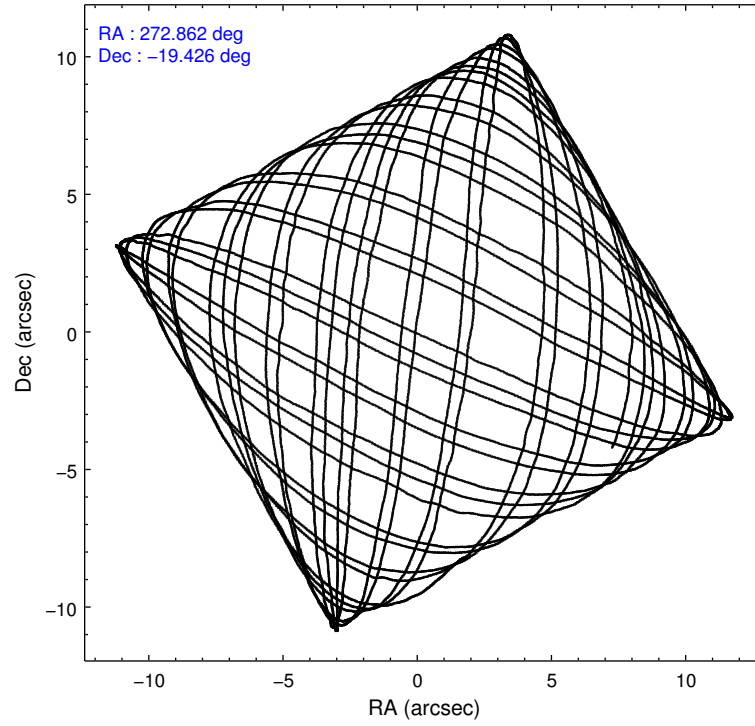
### 2.1.4 Events

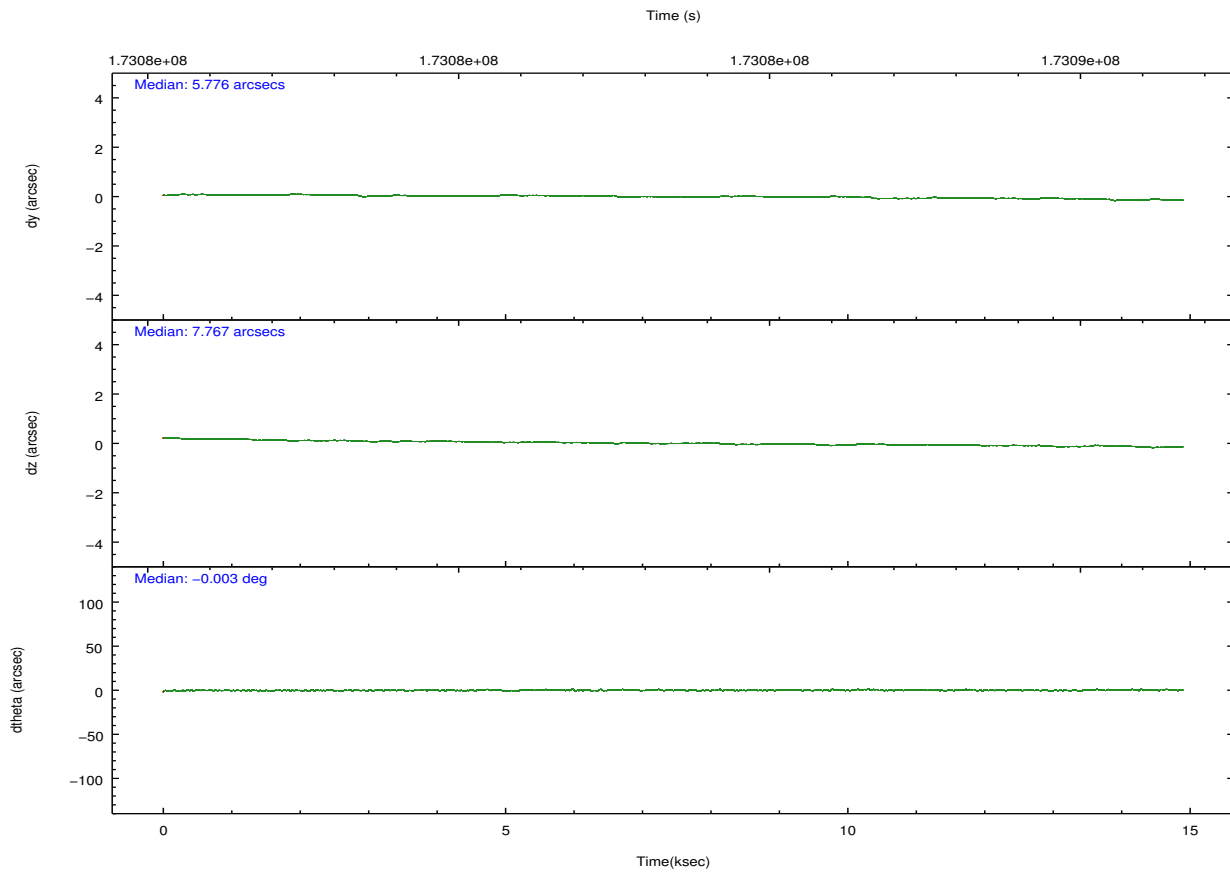
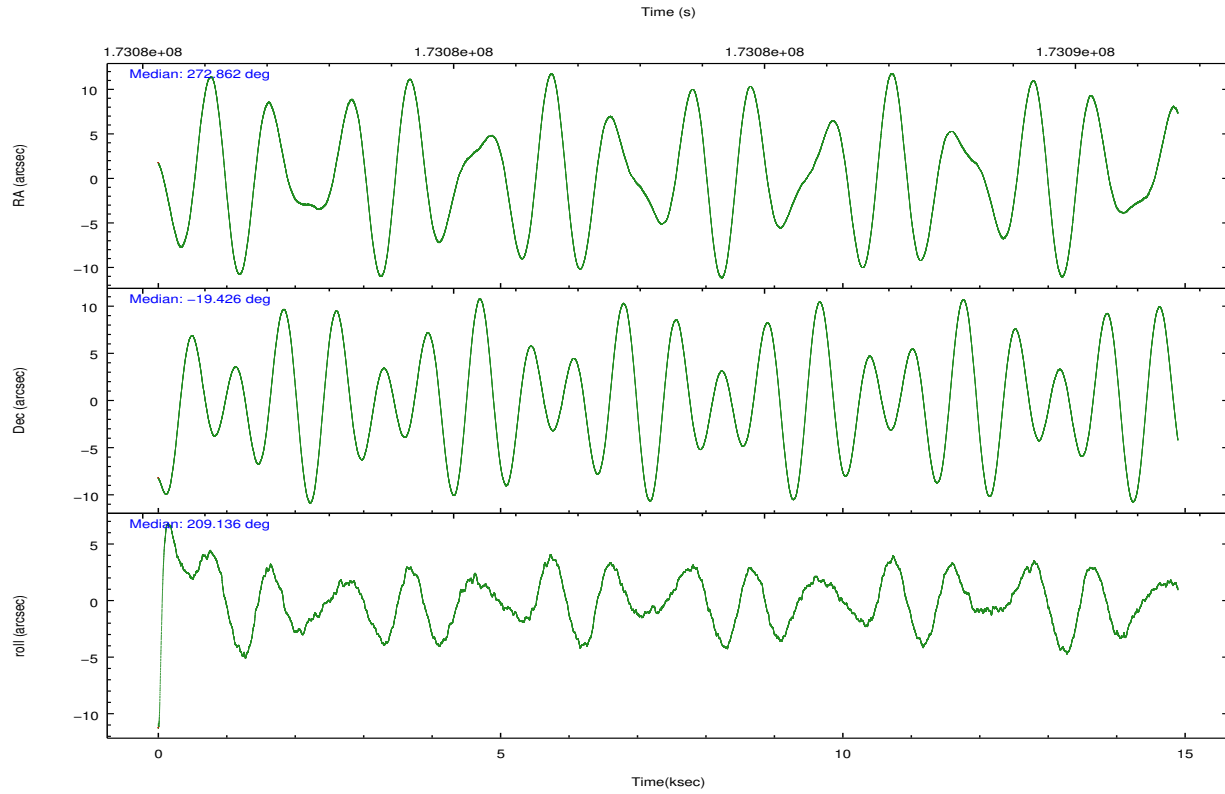
	ccd 2	ccd 3	ccd 5	ccd 6	ccd 7	ccd 8		ccd 2	ccd 3	ccd 5	ccd 6	ccd 7	ccd 8
level 1 events	68456	64775	88064	67259	137206	78551	grade 0 events	3862	3661	11209	5379	21998	6203
rejected events	60327	57223	37554	57214	31174	59326		5%	5%	12%	7%	16%	7%
rejected %	88%	88%	42%	85%	22%	75%	grade 1 events	35	47	272	38	87	63
								0%	0%	0%	0%	0%	0%
							grade 2 events	1629	1373	14596	1709	26707	4076
								2%	2%	16%	2%	19%	5%
							grade 3 events	757	678	2145	811	12175	2075
								1%	1%	2%	1%	8%	2%
							grade 4 events	763	698	2010	780	11702	1964
								1%	1%	2%	1%	8%	2%
							grade 5 events	1780	2063	6725	2081	6997	3189
								2%	3%	7%	3%	5%	4%
							grade 6 events	1120	1144	20560	1368	33475	4909
								1%	1%	23%	2%	24%	6%
							grade 7 events	58510	55111	30547	55093	24065	56072
								85%	85%	34%	81%	17%	71%

## 2.2 Compared Parameters

Parameter	Planned	Actual	Parameter	Planned	Actual
Instrument	ACIS	ACIS	Obspar format version number	7	7
Detector	ACIS-235678	ACIS-235678	Obspar file type	PREDICTED	ACTUAL
Grating	NONE	NONE	Obspar update status	NONE	UPDATED
Data mode	VFAINT	VFAINT	Number of optional ACIS chips dropped	0	0
Observation mode	POINTING	POINTING	On-chip summing requested	N	N
[deg] Pointing RA	272.876122	272.8616449995134	Subarray requested	NONE	NONE
[deg] Pointing Dec	-19.402996	-19.42657297526683	Alternating exposures requested	N	N
[deg] Pointing Roll	208.991873	209.1436810244504	[s] Primary exposure time	0.000000	3.2
[mm] SIM focus pos	-0.684267	-0.6828225247311905			
[mm] SIM defocus	0	0.001444936568705701			
[mm] SIM translation stage pos	-190.132523	-190.1425803651734			
[mm] SIM translation stage offset	0	0.01005778216563158			
[s] Observation start time (MET)	173076896.184000	173075578.87537			
Observation start date	2003-06-27T04:53:52	2003-06-27T04:32:58			
[s] Observation end time (MET)	173090896.184000	173091515.57605			
Observation end date	2003-06-27T08:47:12	2003-06-27T08:58:35			
Read mode	TIMED	TIMED			

## 2.3 Aspect



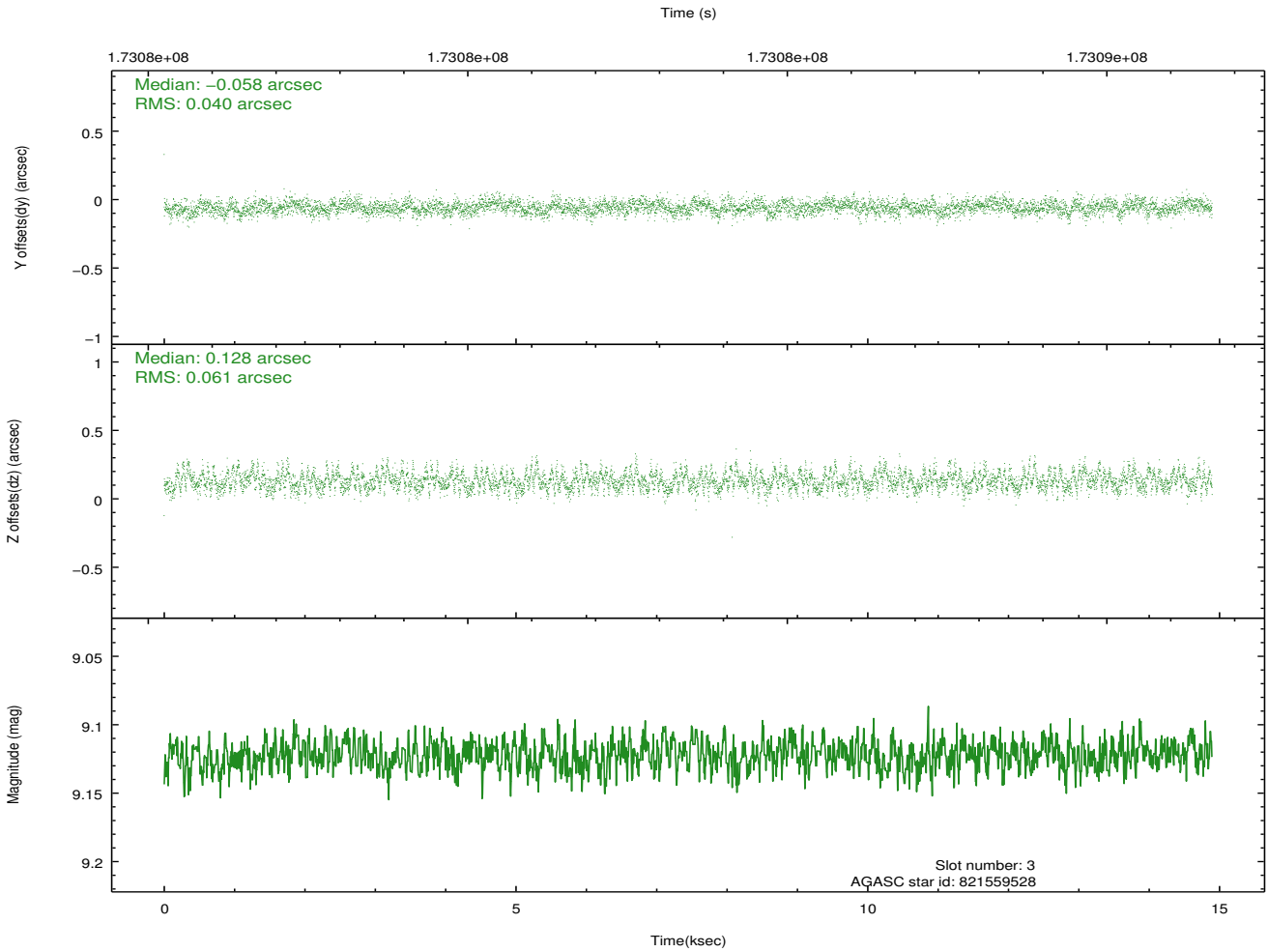
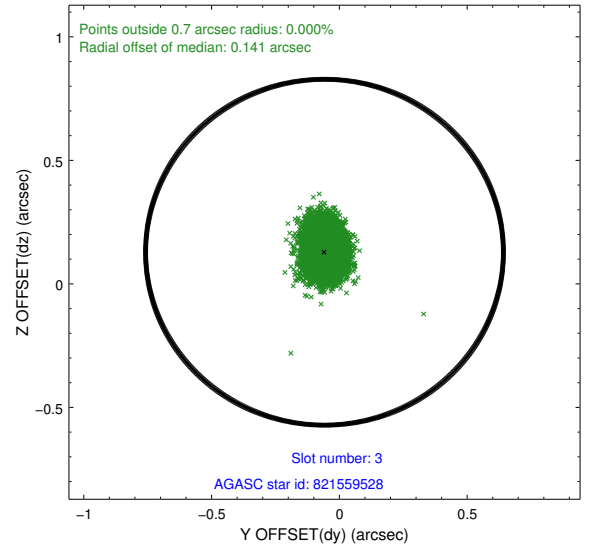
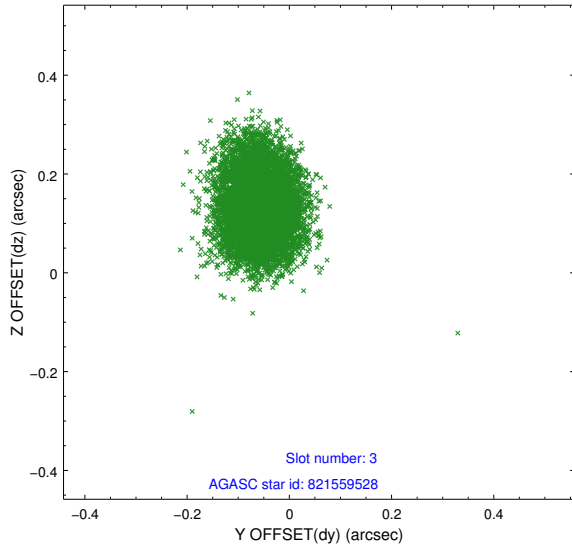


### Slot Statistics

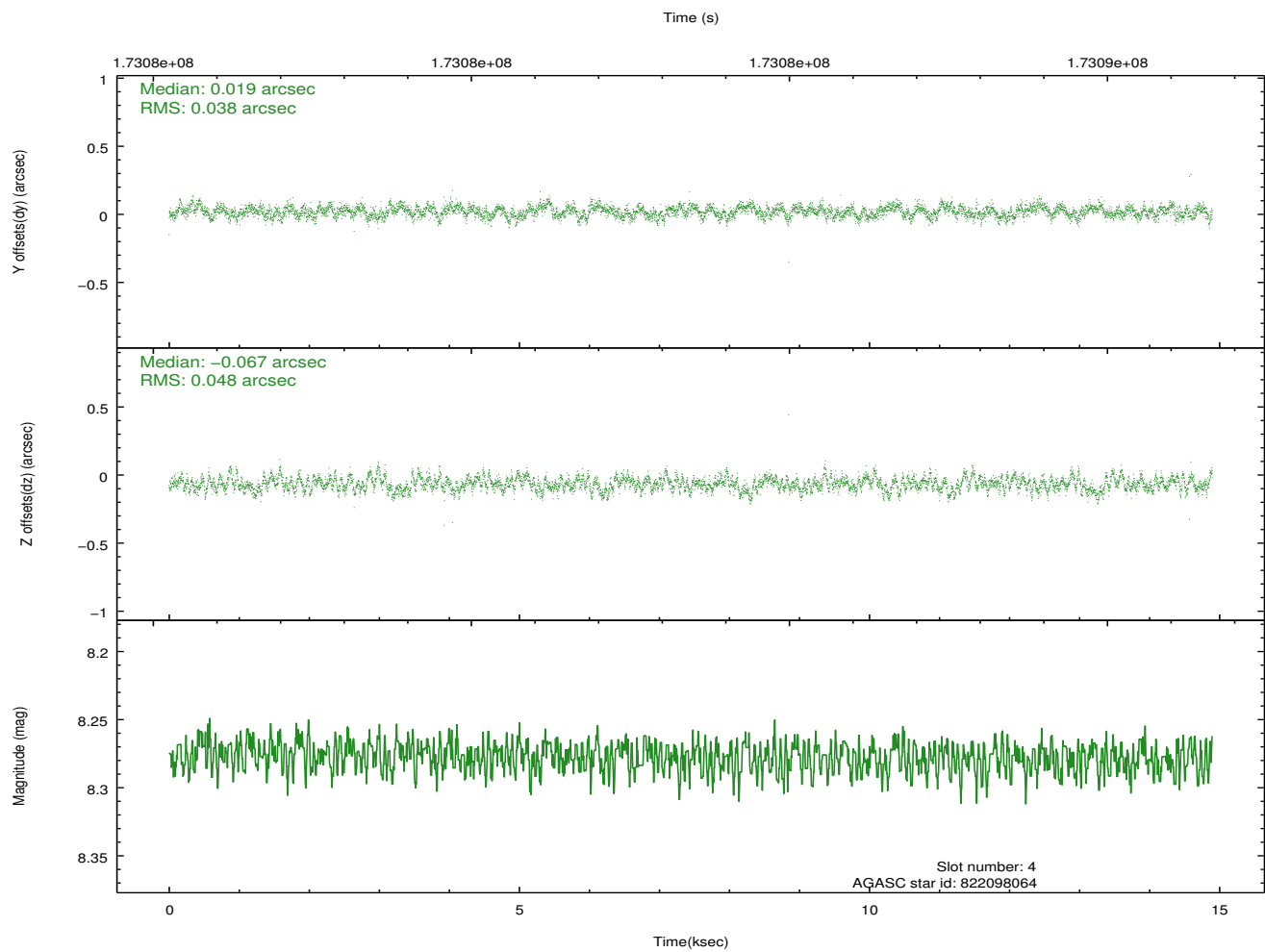
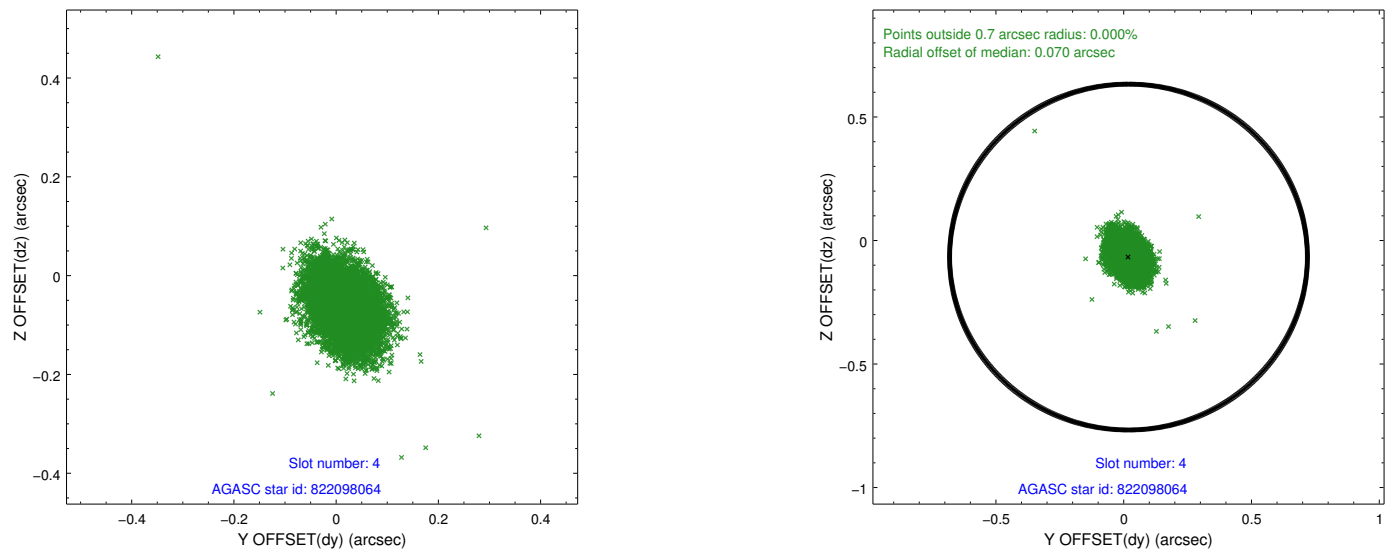
slot	status	id	mag	n_pts	med_dy	med_dz	dr1	dr2	ra	dec	mean_y	mean_z
0	FID	ACIS-S-1	7.18	3634	0.051	-0.045	0.007	0.012	0.000000	0.000000	937.53	-1724.62
1	FID	ACIS-S-5	7.23	3634	-0.079	0.038	0.006	0.010	0.000000	0.000000	-1811.35	172.83
2	FID	ACIS-S-6	7.36	3634	0.007	0.019	0.007	0.013	0.000000	0.000000	402.82	817.01
3	GUIDE	821559528	9.12	7264	-0.058	0.128	0.077	0.128	272.980625	-18.673858	-1583.49	-2123.03
4	GUIDE	822098064	8.28	7267	0.019	-0.067	0.064	0.104	273.233974	-19.745214	-462.99	1666.21
5	GUIDE	822100944	9.65	7263	-0.005	-0.102	0.111	0.178	273.673430	-19.715066	-1816.07	2297.98
6	GUIDE	822090352	8.63	7267	0.011	-0.028	0.082	0.138	272.203907	-18.976234	1259.64	-2448.49
7	GUIDE	822102528	9.31	7263	0.032	0.065	0.083	0.133	272.446853	-20.048949	2398.16	1332.31

## 2.4 Star Slots

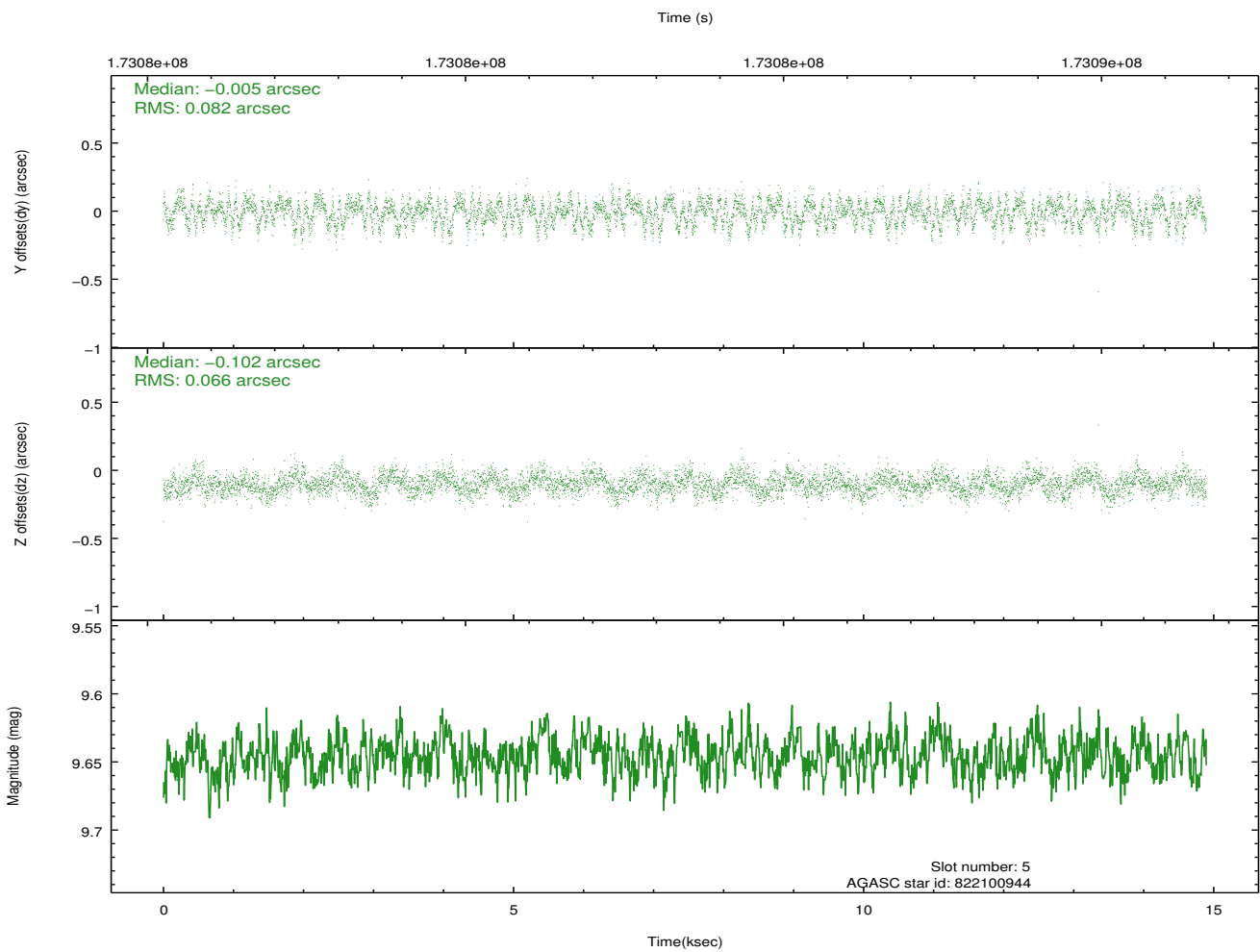
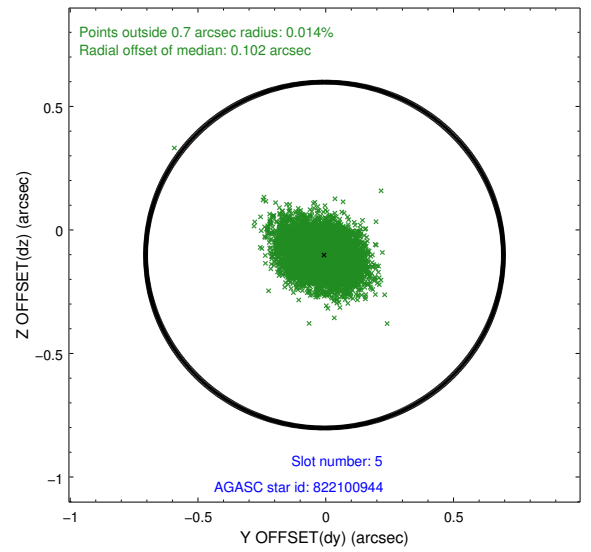
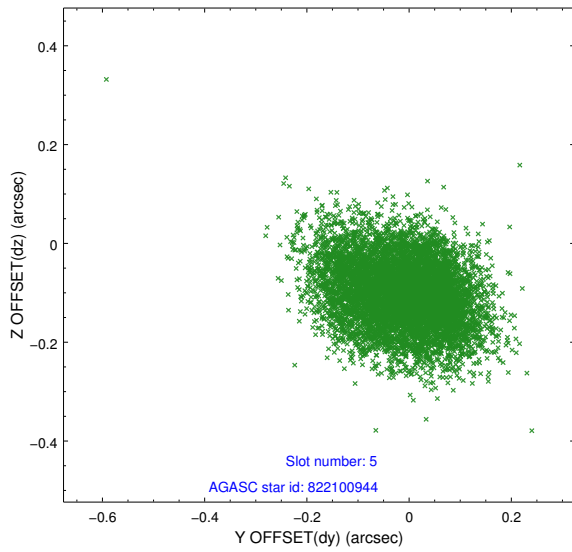
### 2.4.1 Slot 3



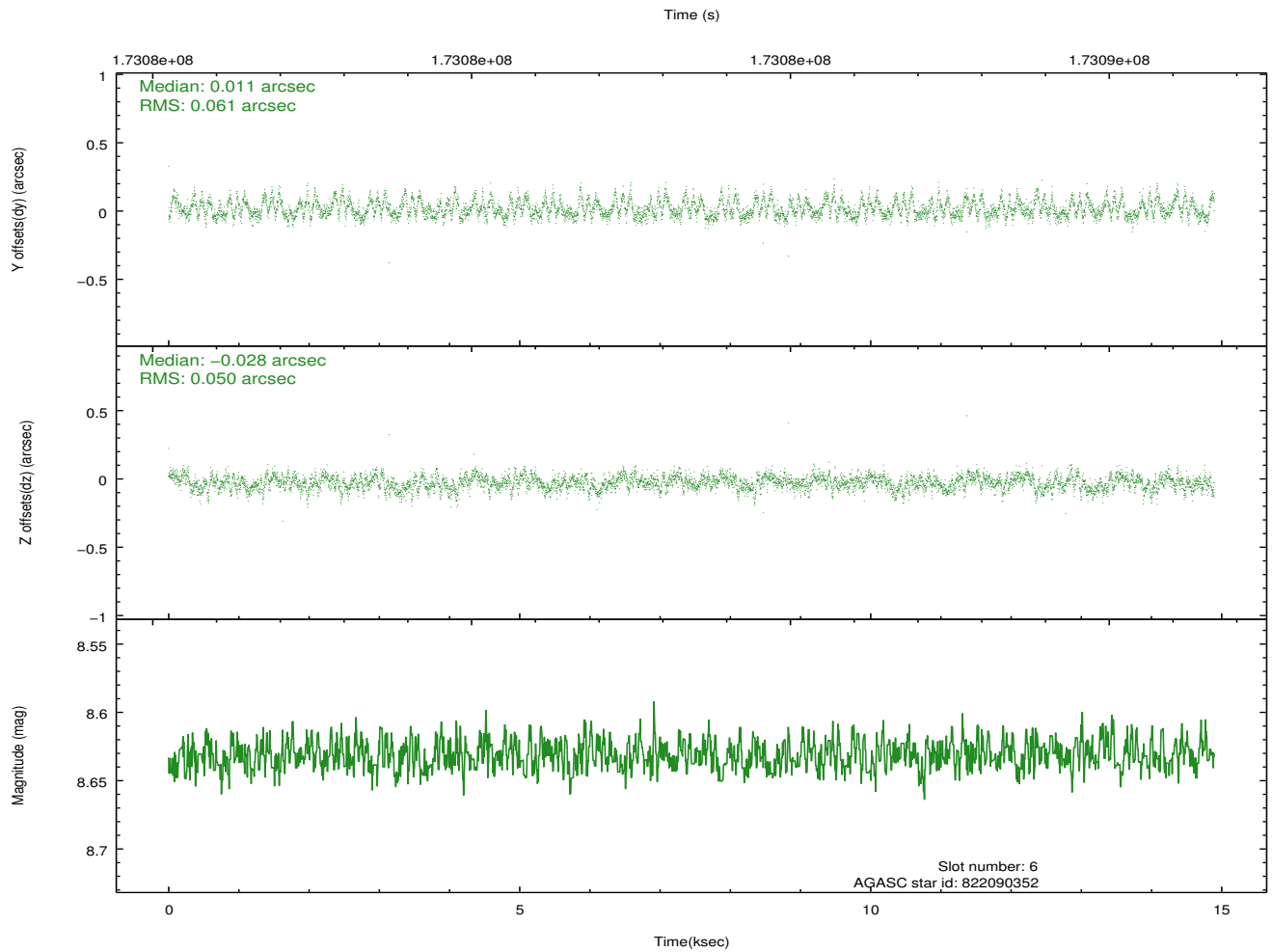
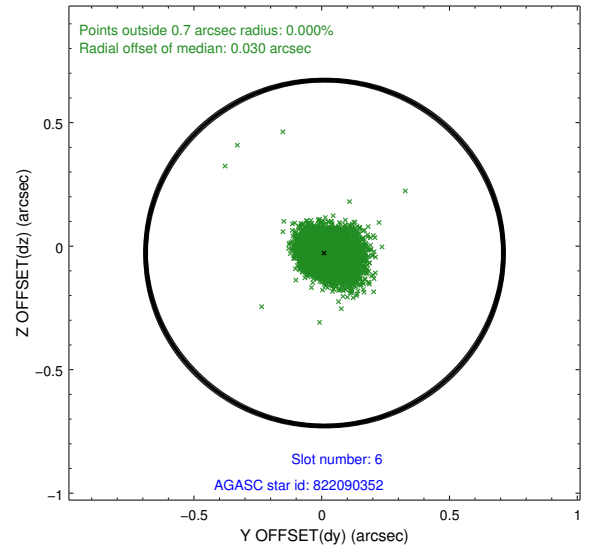
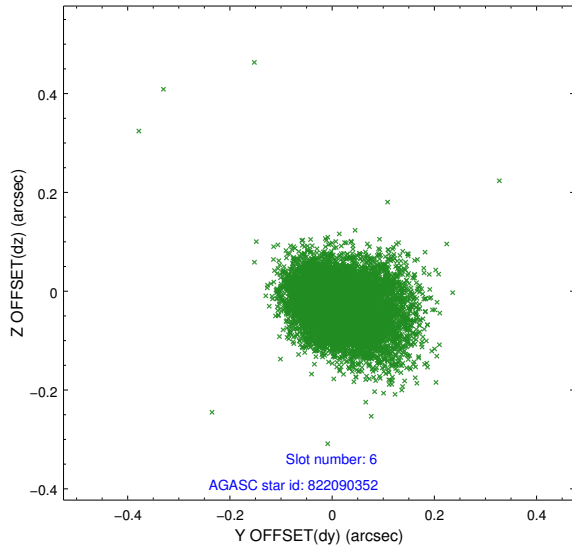
## 2.4.2 Slot 4



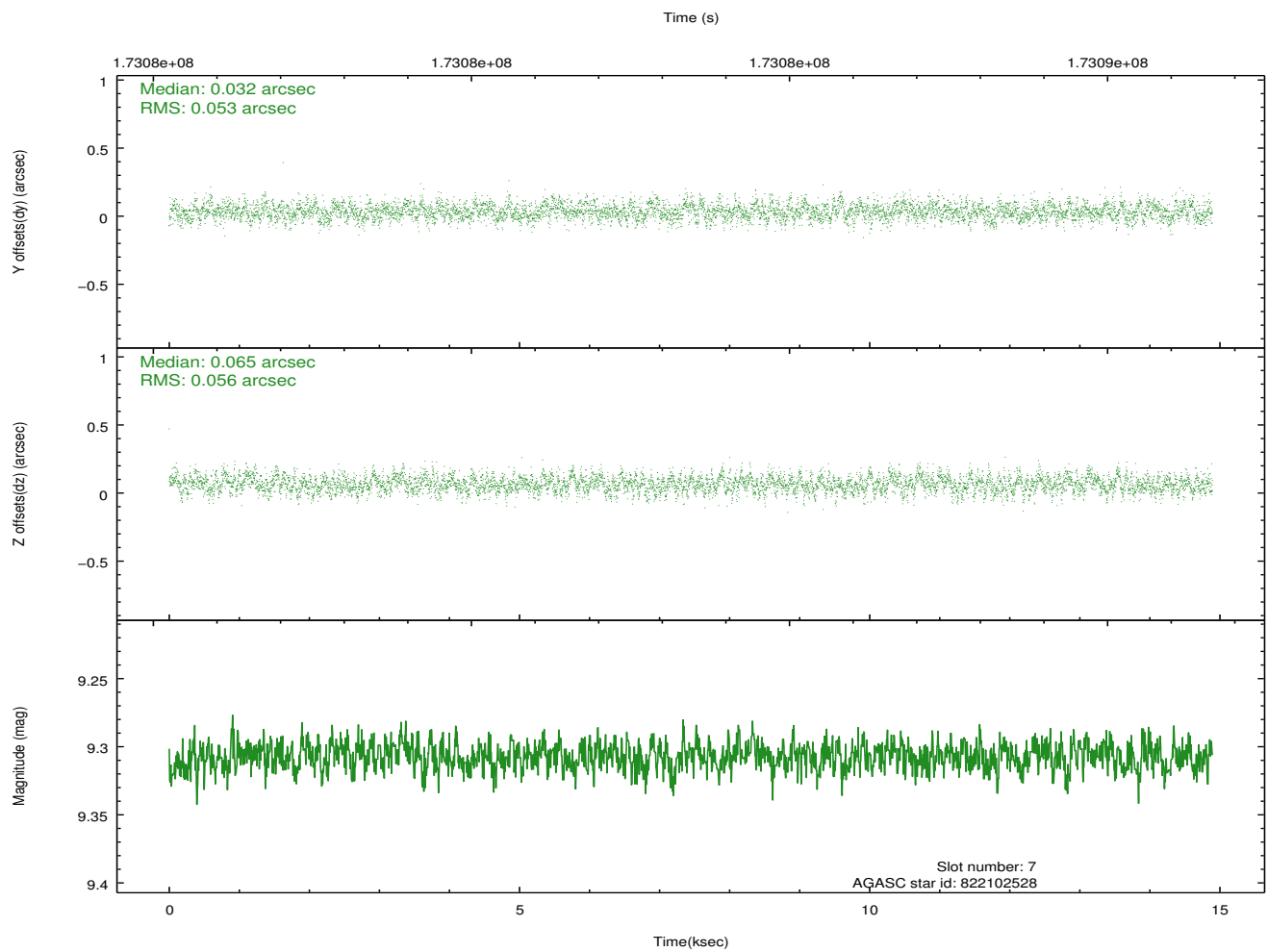
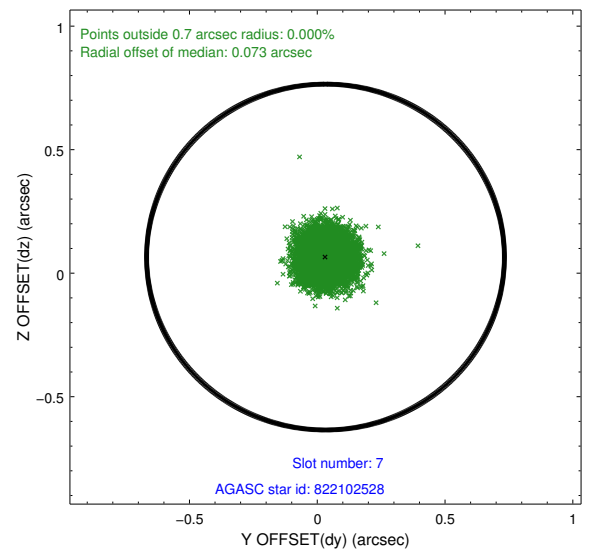
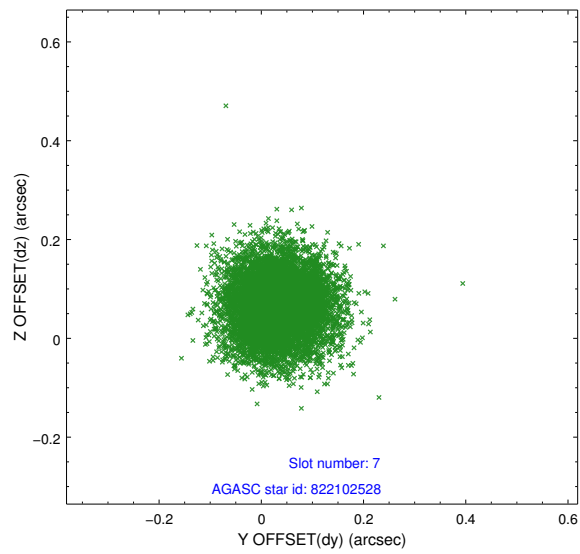
### 2.4.3 Slot 5



### 2.4.4 Slot 6

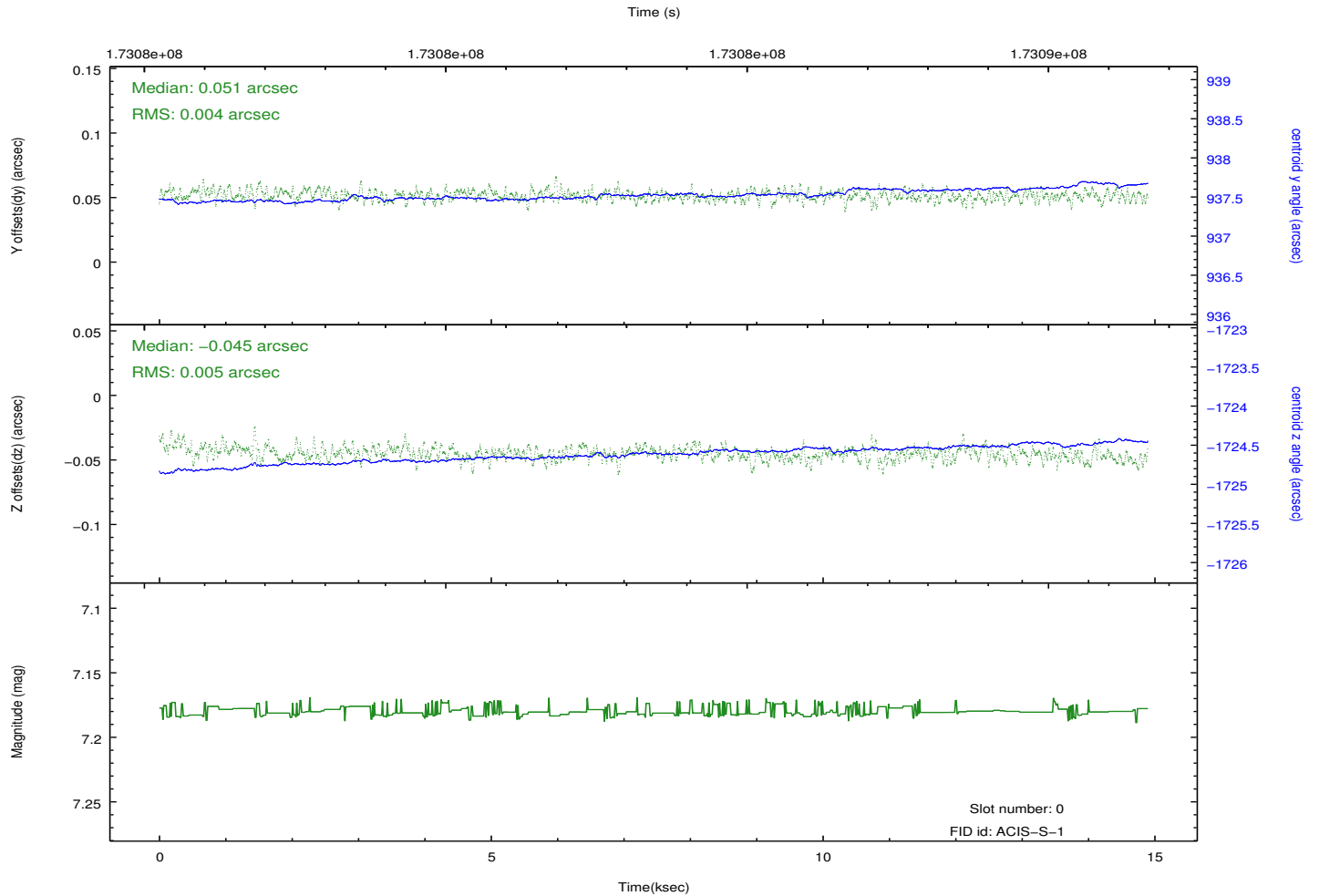
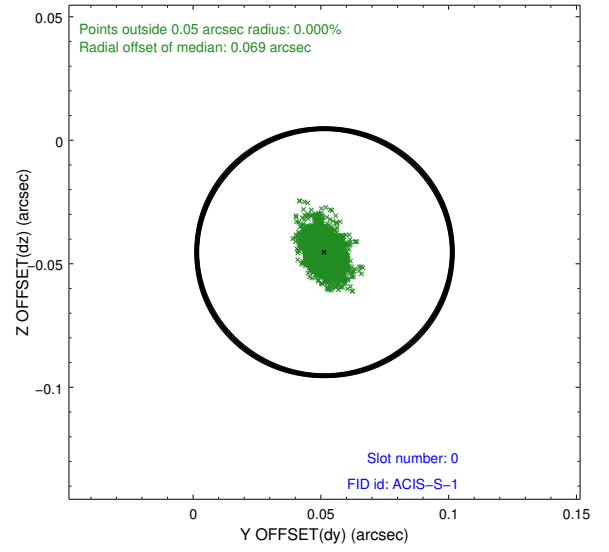
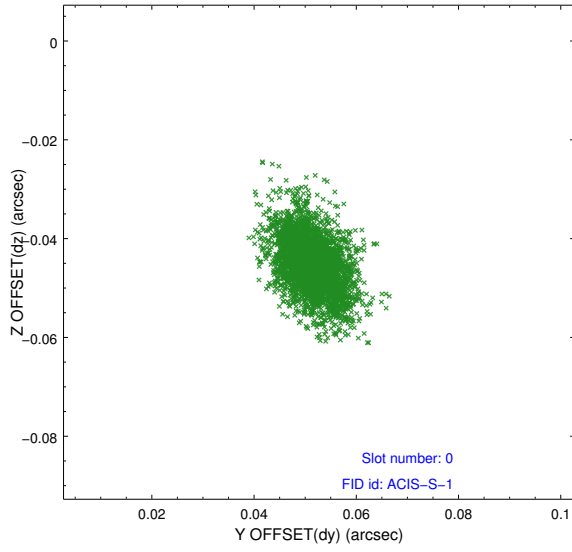


## 2.4.5 Slot 7

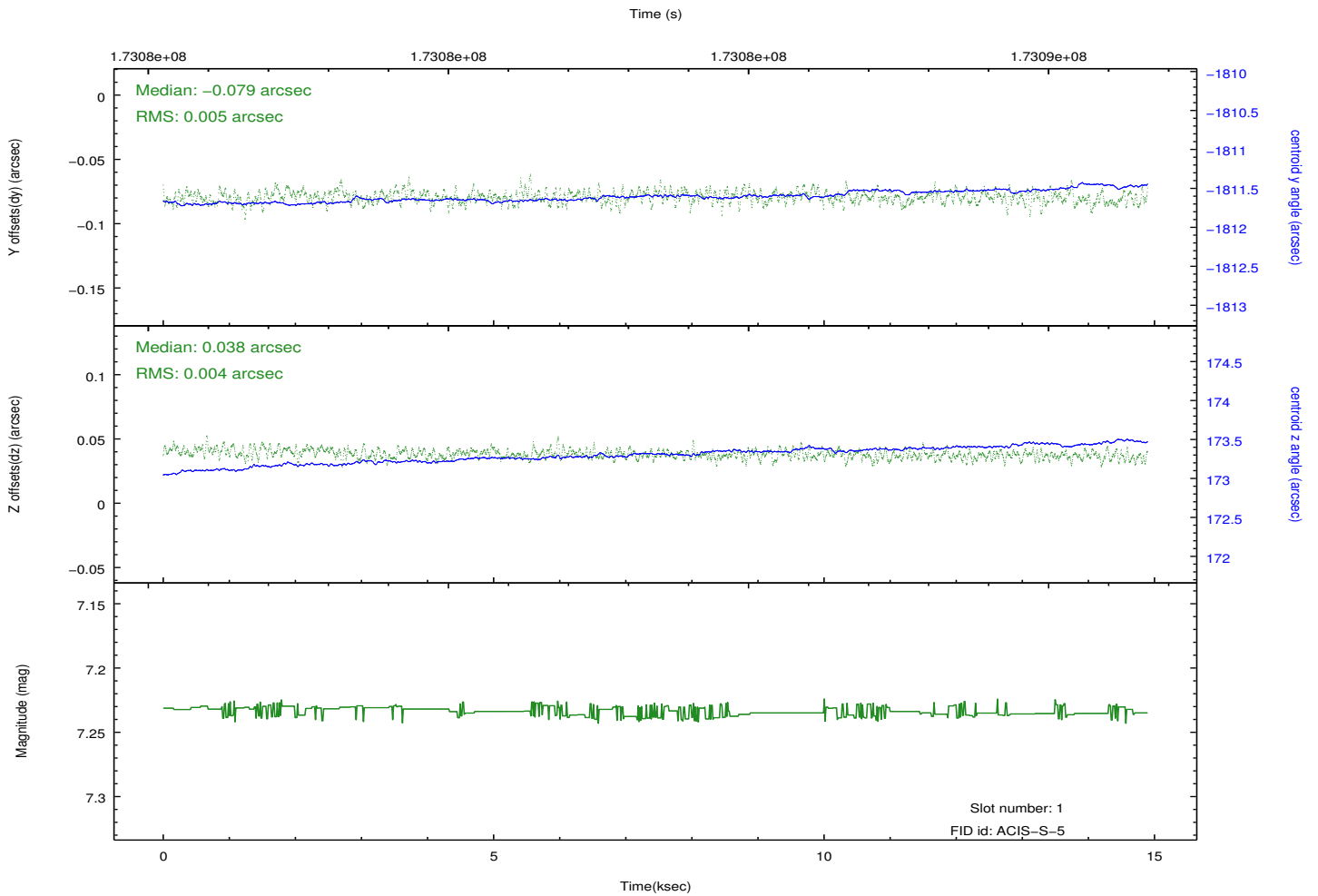
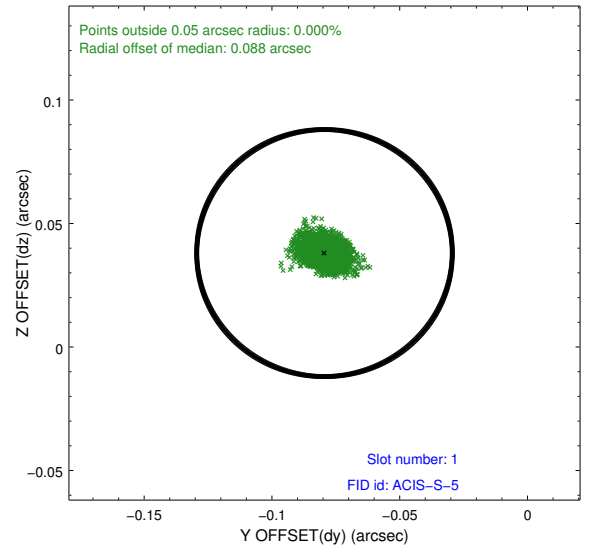
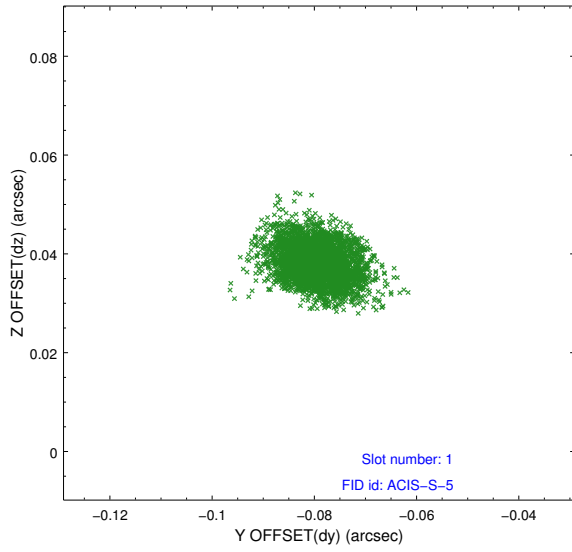


## 2.5 FID Slots

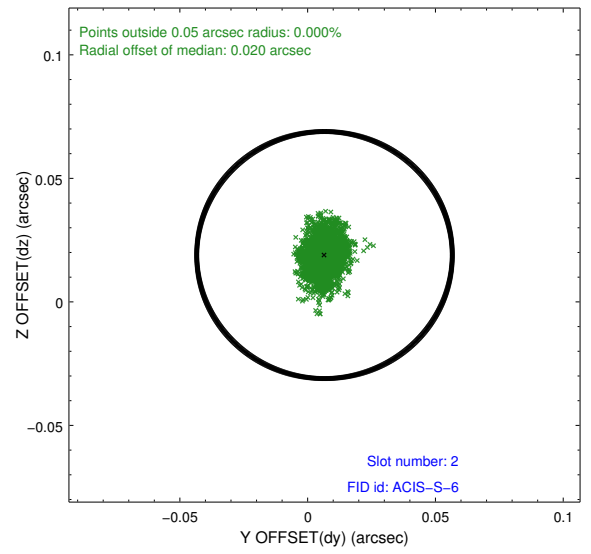
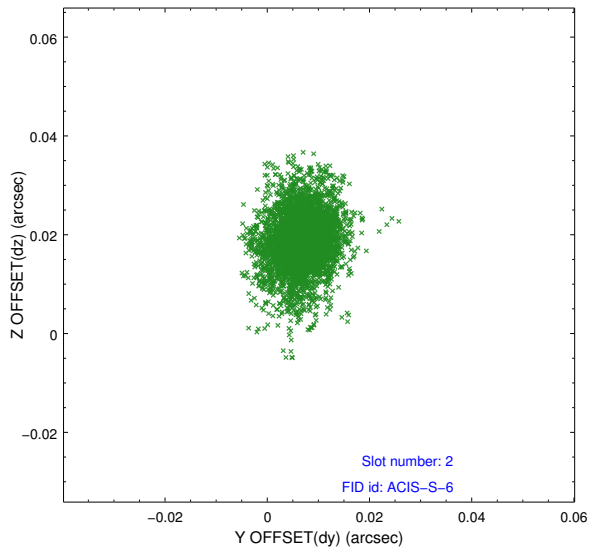
### 2.5.1 Slot 0



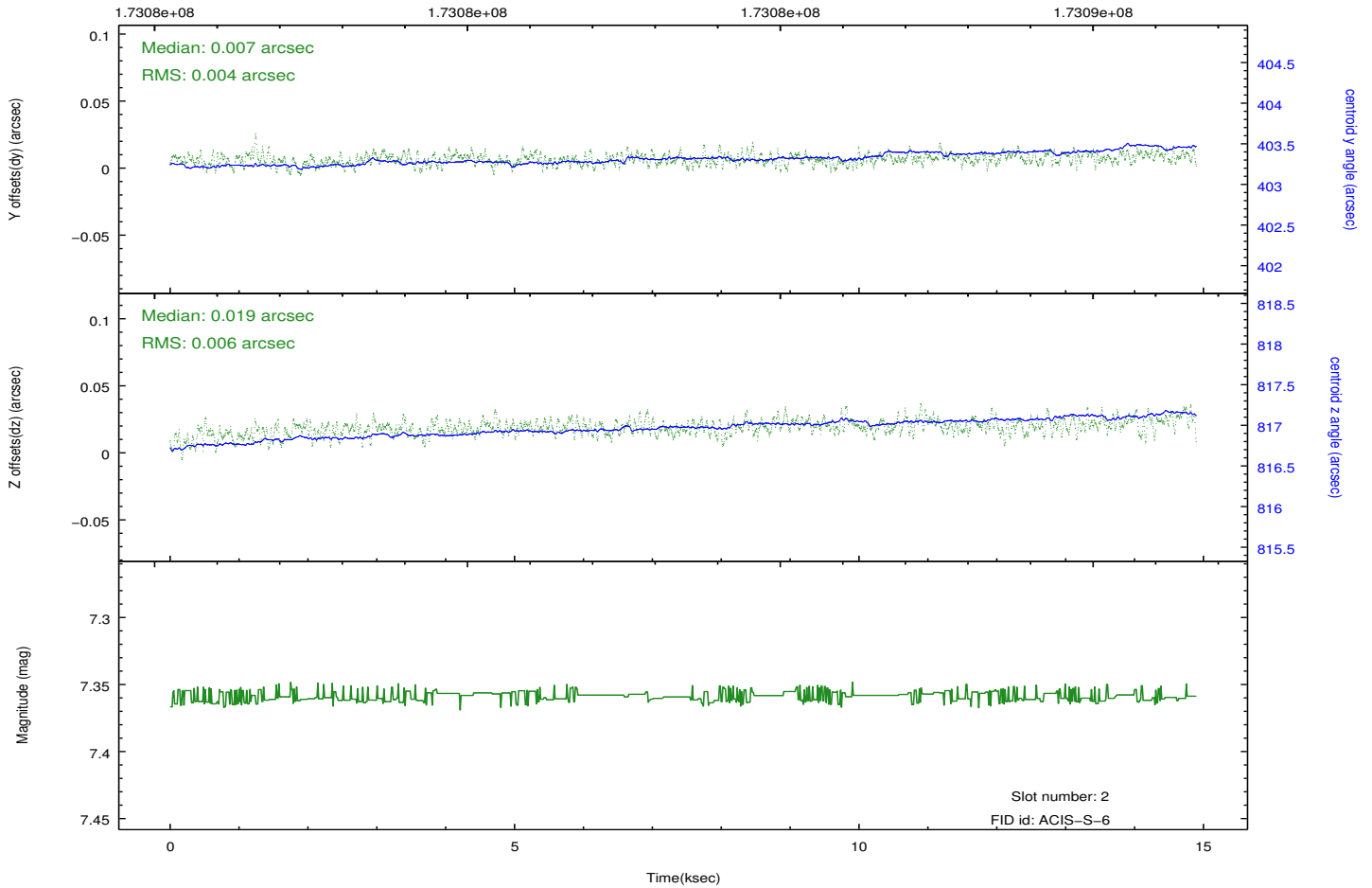
## 2.5.2 Slot 1



### 2.5.3 Slot 2



Time (s)



# A Summary

## A.1 Status

V&V Scientist	Jen Lauer
V&V Date (YYYY-MM-DD)	2012.11.16
V&V Edition	1
V&V Disposition and Status	OK
V&V Charge Time	13.964

## A.2 Comments

Monitor constraint met.