

V&V Reference Report

L2 ASCDS Version : 8.4.5

Observation 3970 - L2 Version 3
Chandra X-Ray Center

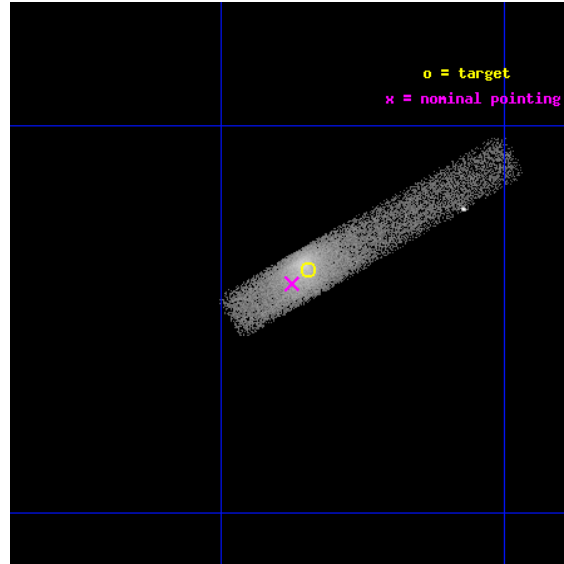
L2 Processing Date : Oct 19 2012

Contents

1	Front	2
2	OBI	3
2.1	OBI	3
2.1.1	Images	3
2.1.2	Bias	3
2.1.3	Parameters	4
2.1.4	Events	4
2.2	Compared Parameters	5
2.3	Aspect	6
2.4	Star Slots	9
2.4.1	Slot 3	9
2.4.2	Slot 4	10
2.4.3	Slot 5	11
2.4.4	Slot 6	12
2.4.5	Slot 7	13
2.5	FID Slots	14
2.5.1	Slot 0	14
2.5.2	Slot 1	15
2.5.3	Slot 2	16
A	Summary	17
A.1	Status	17
A.2	Comments	17

1 Front

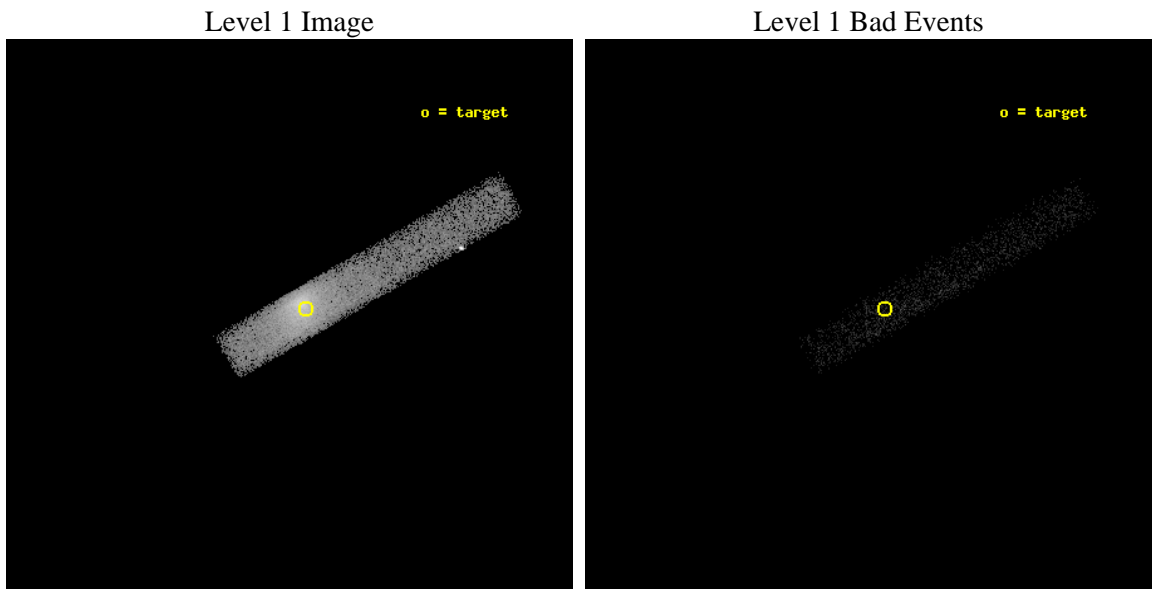
seq_num	700649	Sequence number
obs_id	3970	Observation id
title	STRUCTURES AND SPECTRA OF EXTENDED EMISSION REGIONS IN THREE BL LAC OBJECTS	Proposal title
observer	Prof Mark Birkinshaw	Principal investigator
object	EXO 0423.4-0840	Source name
dtcycle	0	
cycle	P	events from which exps? Prim/Second/Both
ra_targ	66.46125	Observer's specified target RA [deg]
dec_targ	-8.561944	Observer's specified target Dec [deg]
ra_nom	66.46875312342	Nominal RA [deg]
dec_nom	-8.5680940772414	Nominal Dec [deg]
roll_nom	330.25822033472	Nominal Roll [deg]
revision	3	Processing version of data
ontime	15745.862328053	Sum of GTIs [s]
livetime	14280.665996783	Livetime [s]
ontime7	15745.862328053	Sum of GTIs [s]
l2events	33027	Number of level 2 events



2 OBI

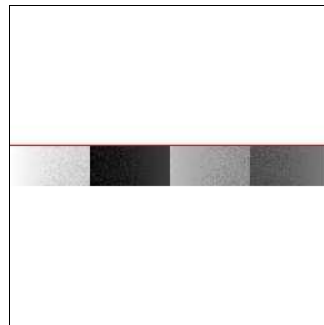
2.1 OBI

2.1.1 Images



2.1.2 Bias

Chip 7



2.1.3 Parameters

obi_num	0	Obi number	sched_exp_time	14888.000000	[s] Scheduled observation exposure time
ascdsver	8.4.5	Processing system revision	ontime	15745.862328053	Sum of GTIs [s]
caldbver	4.5.2	 	ontime7	15745.862328053	Sum of GTIs [s]
date	2012-10-19T06:15:42	Date and time of file creation	l1events	42942	Number of level 1 events
revision	3	Processing version of data			

2.1.4 Events

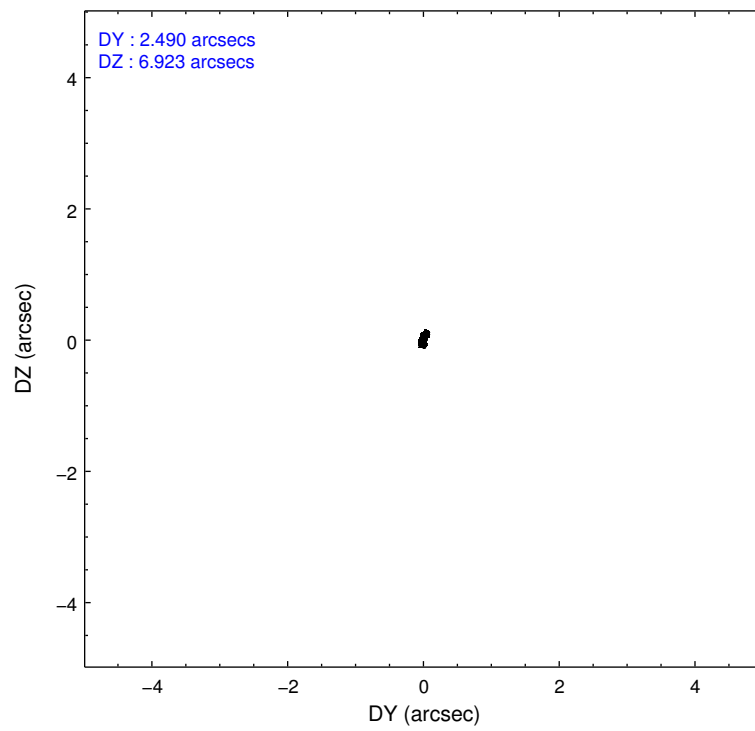
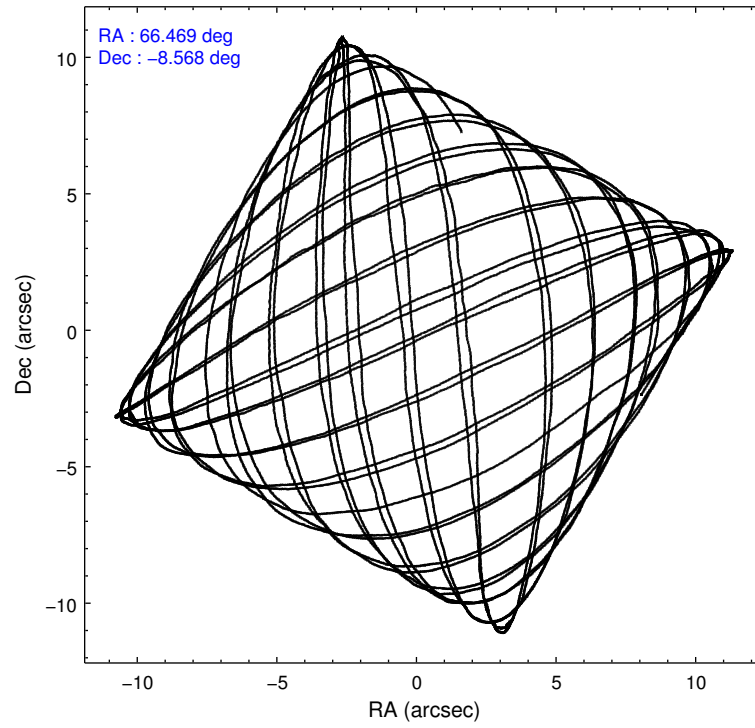
	ccd 7
level 1 events	42942
rejected events	9232
rejected %	21%

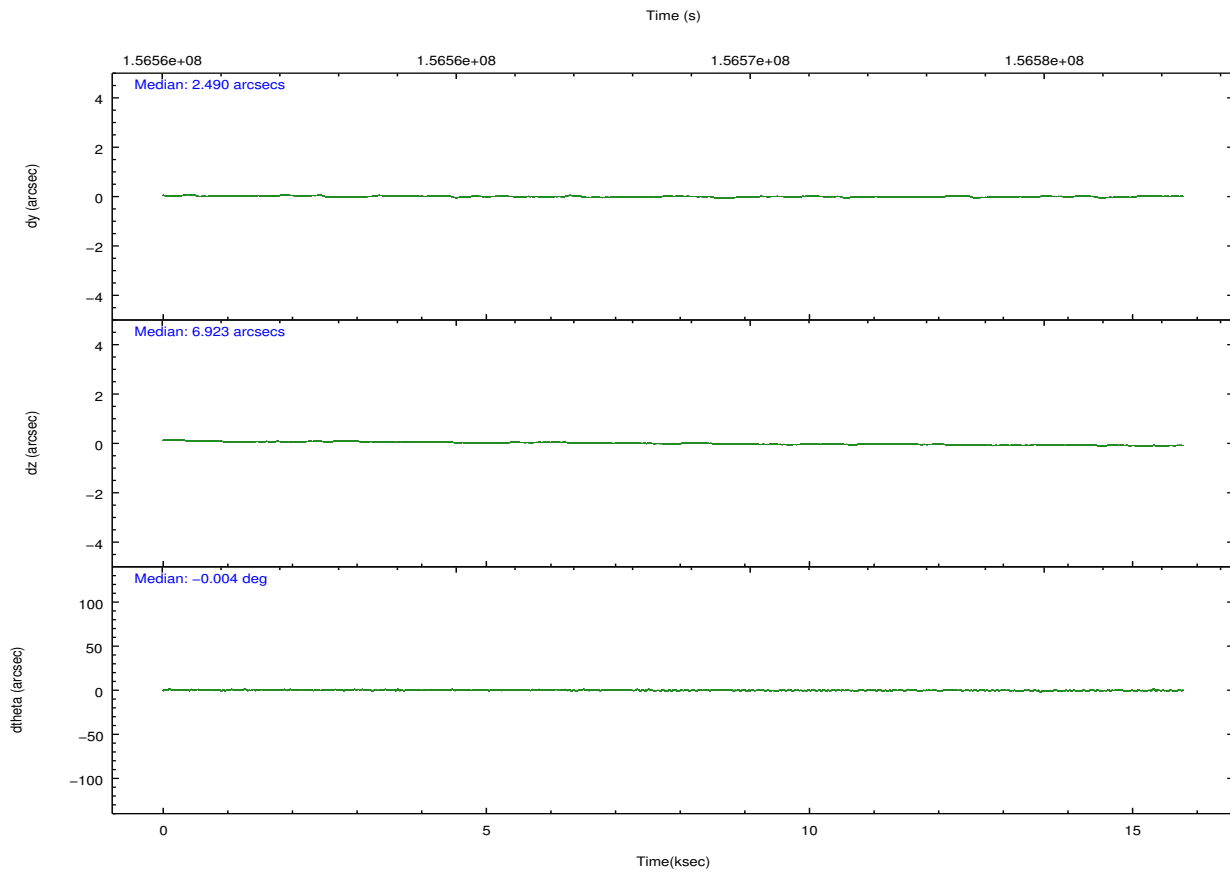
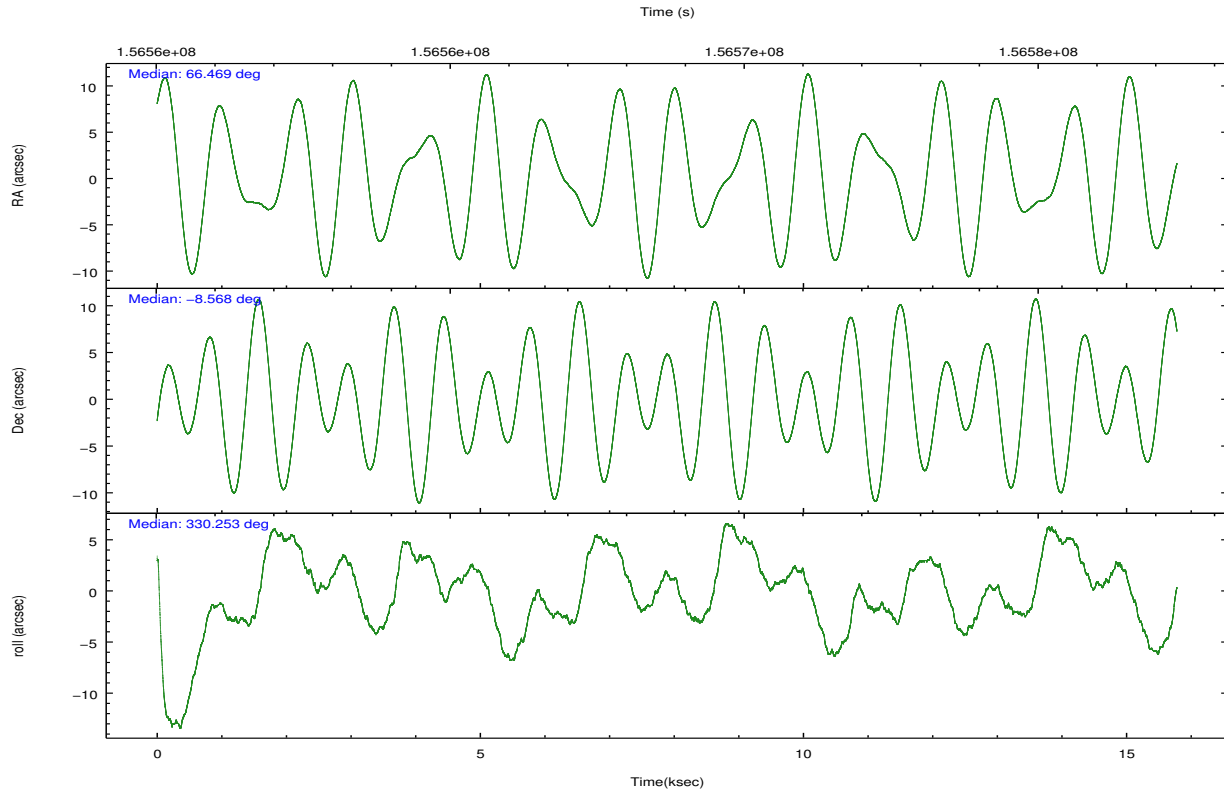
	ccd 7
grade 0 events	8654
	20%
grade 1 events	21
	0%
grade 2 events	8478
	19%
grade 3 events	4076
	9%
grade 4 events	4087
	9%
grade 5 events	1718
	4%
grade 6 events	8417
	19%
grade 7 events	7491
	17%

2.2 Compared Parameters

Parameter	Planned	Actual	Parameter	Planned	Actual
Instrument	ACIS	ACIS	Obspar format version number	7	7
Detector	ACIS-7	ACIS-7	Obspar file type	PREDICTED	ACTUAL
Grating	NONE	NONE	Obspar update status	NONE	UPDATED
Data mode	FAINT	FAINT	Number of optional ACIS chips dropped	0	0
Observation mode	POINTING	POINTING	On-chip summing requested	N	N
[deg] Pointing RA	66.441224	66.46875312342006	Subarray requested	CUSTOM	1/8
[deg] Pointing Dec	-8.568635	-8.568094077241431	Subarray start row	449	449
[deg] Pointing Roll	330.097489	330.2582203347249	Subarray row count	128	128
[mm] SIM focus pos	-0.684267	-0.6828225247311905	Alternating exposures requested	N	N
[mm] SIM defocus	0	0.001444936568705701	[s] Primary exposure time	0.000000	0.4
[mm] SIM translation stage pos	-190.132523	-190.1400660498719			
[mm] SIM translation stage offset	0	0.00754346686406393			
[s] Observation start time (MET)	156561692.184000	156560374.3294			
Observation start date	2002-12-18T01:20:28	2002-12-18T00:59:34			
[s] Observation end time (MET)	156576580.184000	156577678.38013			
Observation end date	2002-12-18T05:28:36	2002-12-18T05:47:58			
Read mode	TIMED	TIMED			

2.3 Aspect



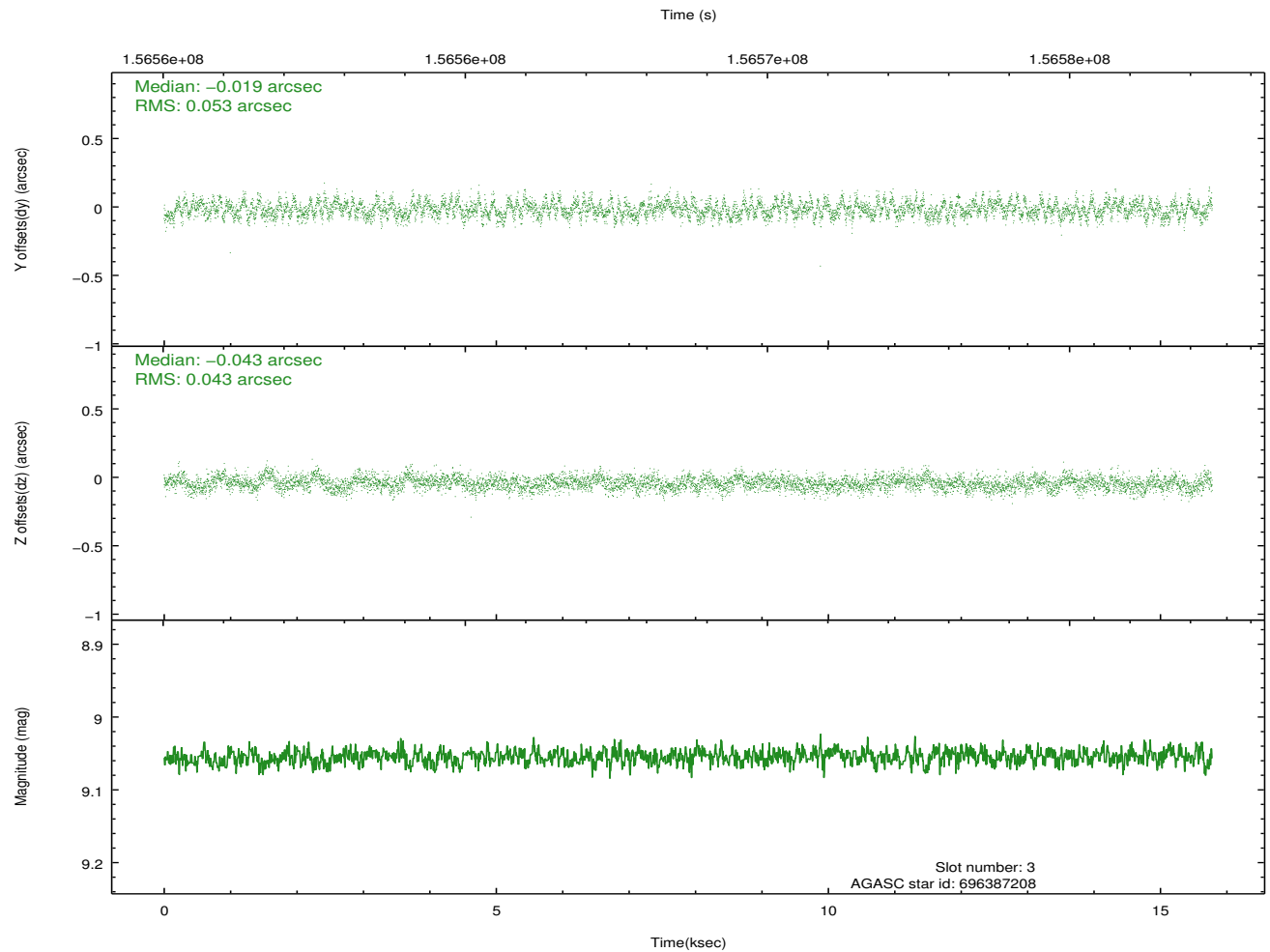
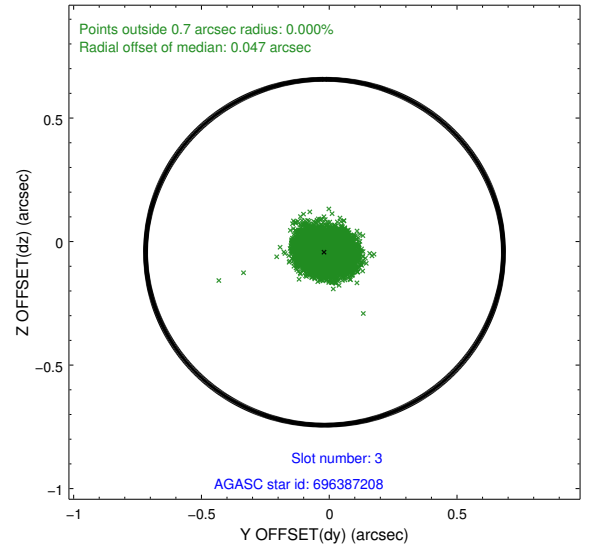
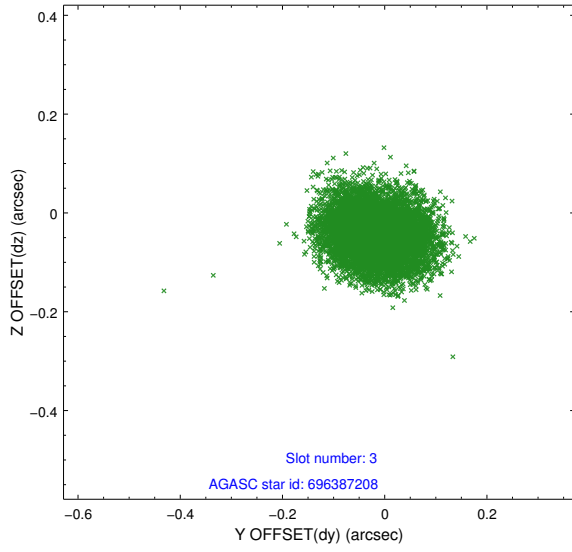


Slot Statistics

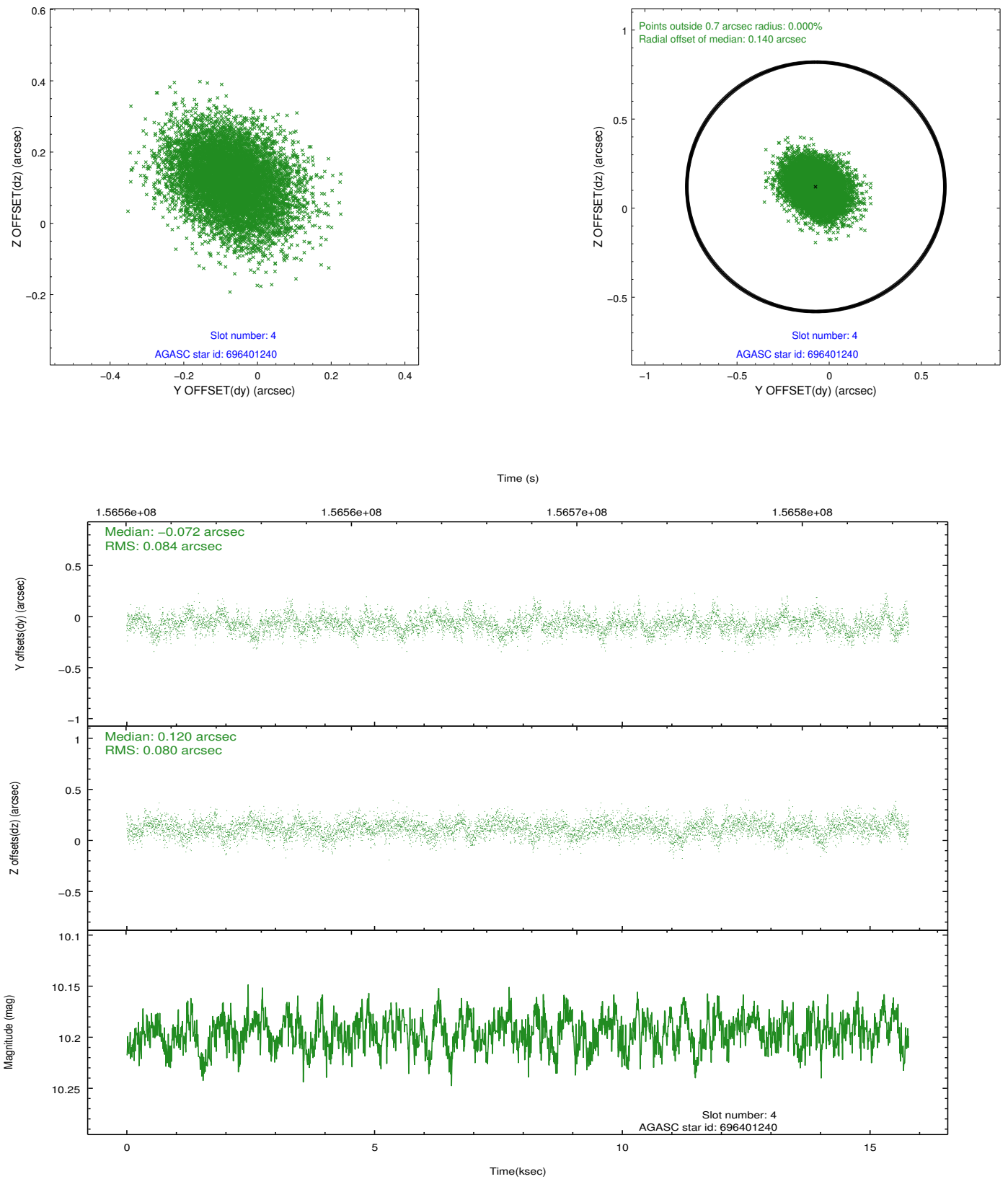
slot	status	id	mag	n_pts	med_dy	med_dz	dr1	dr2	ra	dec	mean_y	mean_z
0	FID	ACIS-S-2	7.12	3849	-0.030	0.001	0.007	0.011	0.000000	0.000000	-755.14	-1728.09
1	FID	ACIS-S-4	7.20	3849	-0.009	0.014	0.005	0.010	0.000000	0.000000	2158.02	180.13
2	FID	ACIS-S-5	7.24	3849	0.008	-0.006	0.007	0.012	0.000000	0.000000	-1807.59	174.08
3	GUIDE	696387208	9.05	7699	-0.019	-0.043	0.073	0.116	66.200801	-8.036400	-1698.49	1233.30
4	GUIDE	696401240	10.20	7691	-0.072	0.120	0.124	0.202	65.973010	-8.542660	-1491.62	-750.69
5	GUIDE	696518688	9.31	7681	0.082	0.035	0.096	0.153	66.849427	-8.392964	944.81	1272.34
6	GUIDE	696522872	8.05	7699	-0.120	-0.100	0.074	0.118	66.882030	-8.191582	684.86	1959.08
7	GUIDE	696538136	9.02	7697	0.123	-0.014	0.089	0.150	66.785429	-8.898543	1653.55	-419.34

2.4 Star Slots

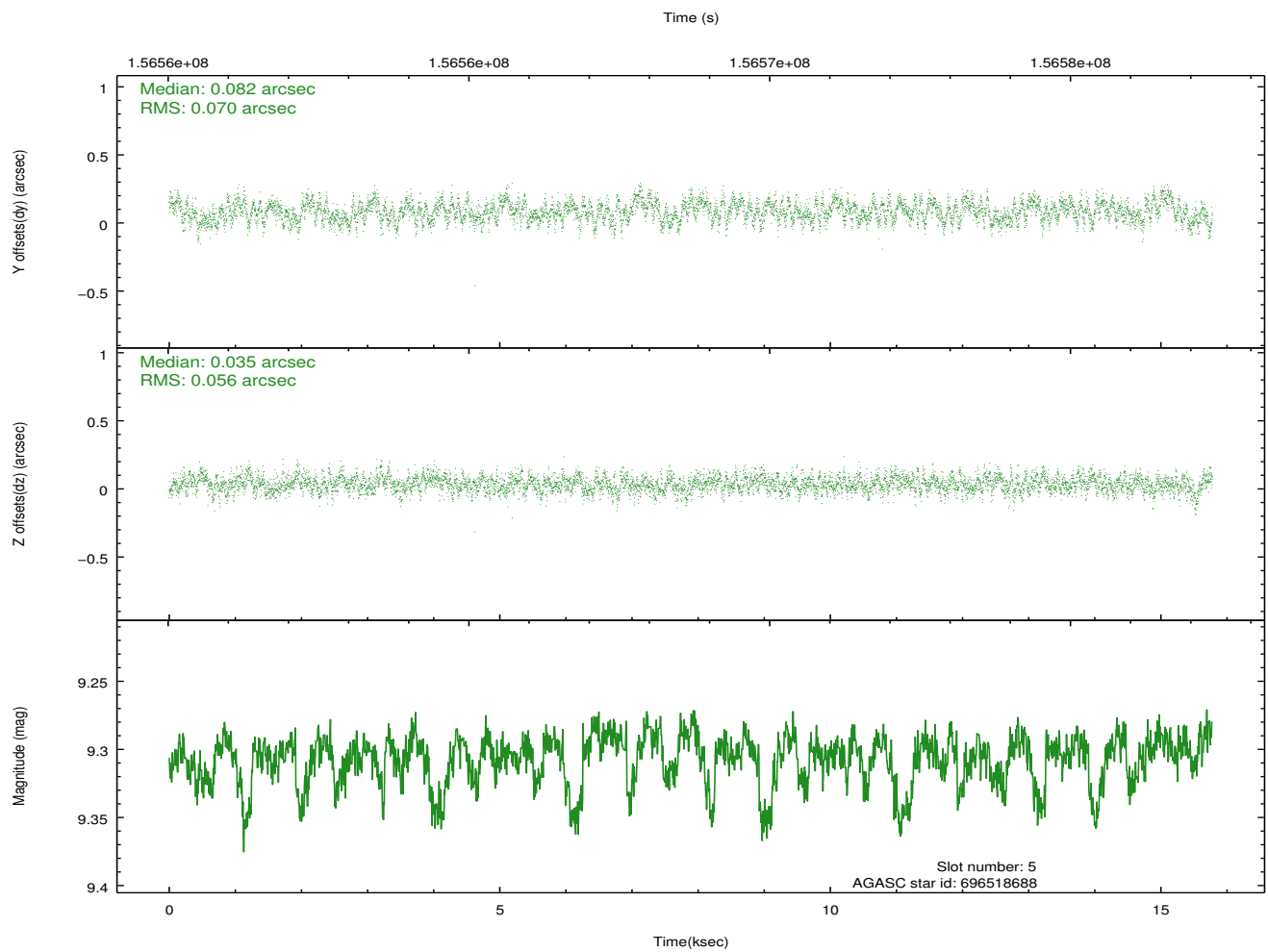
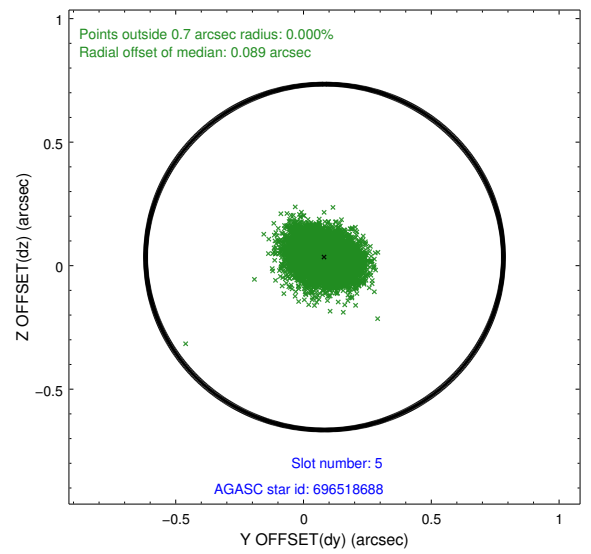
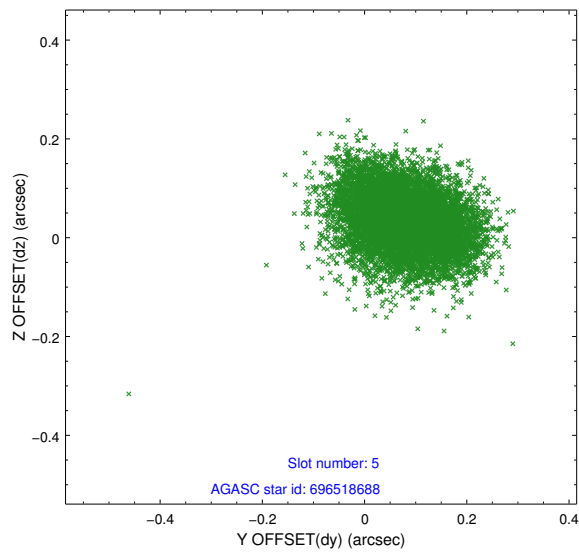
2.4.1 Slot 3



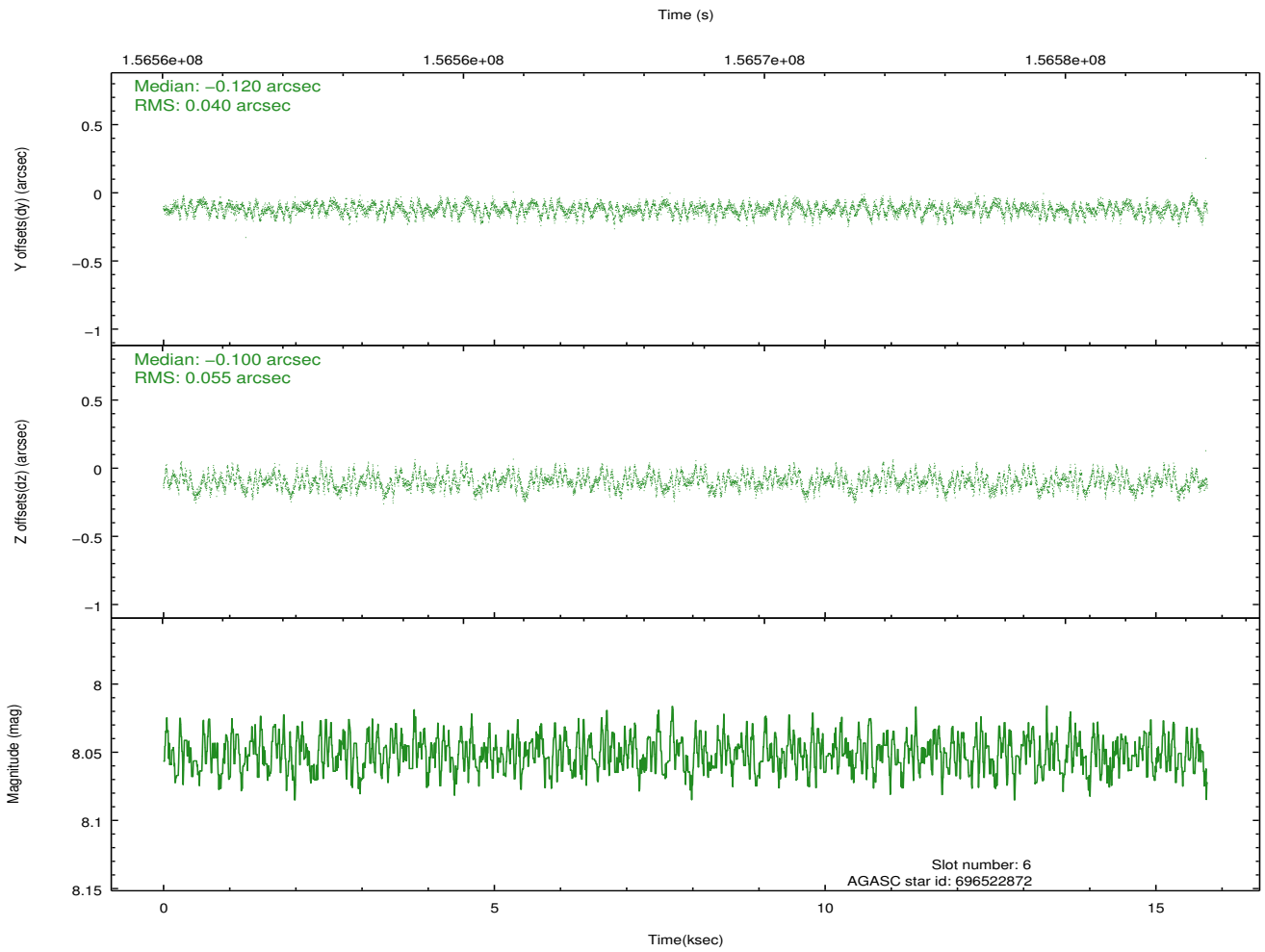
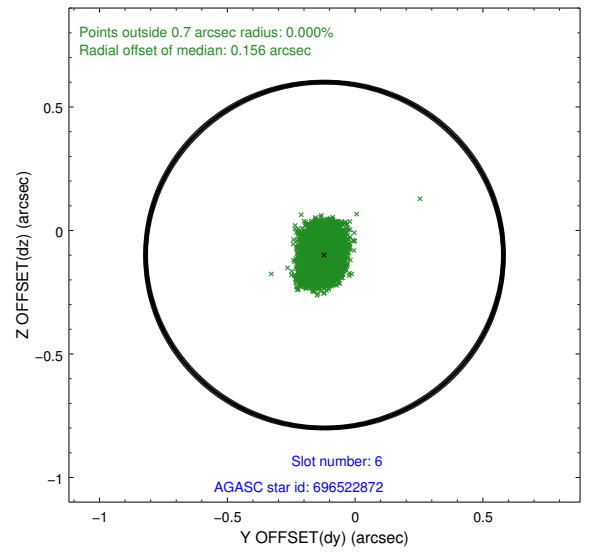
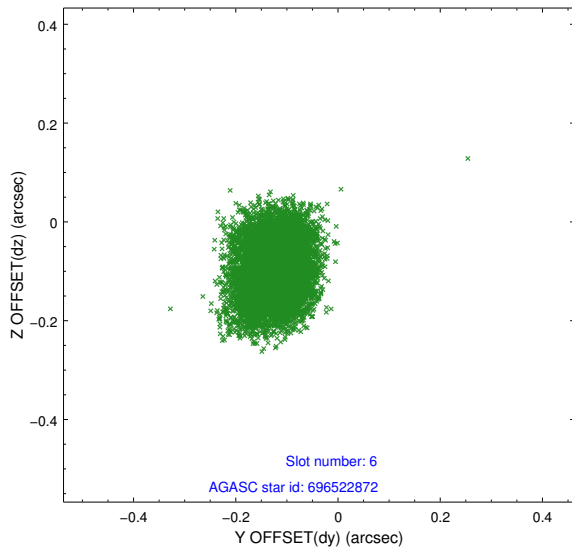
2.4.2 Slot 4



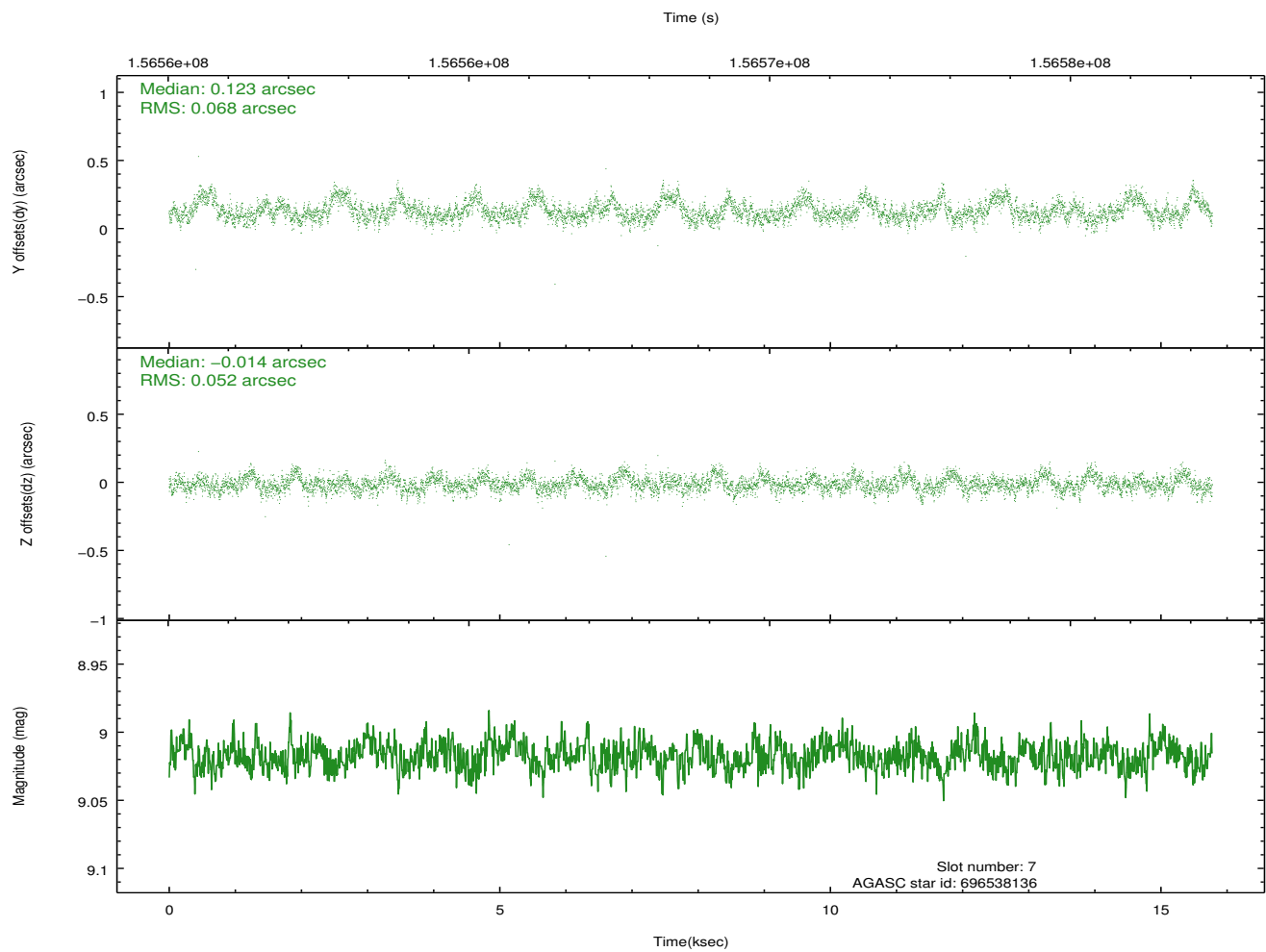
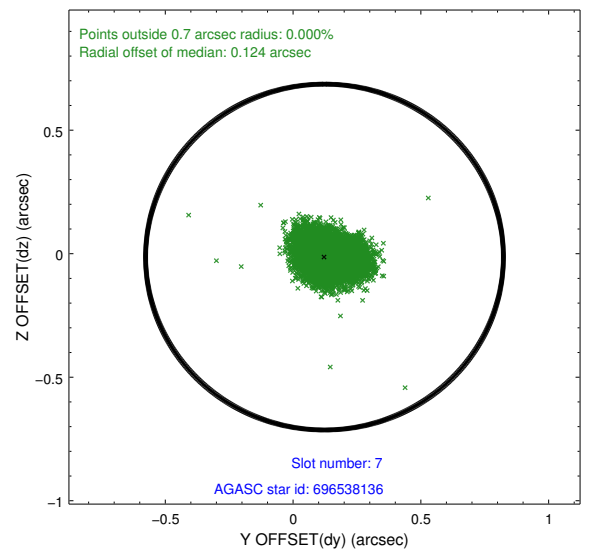
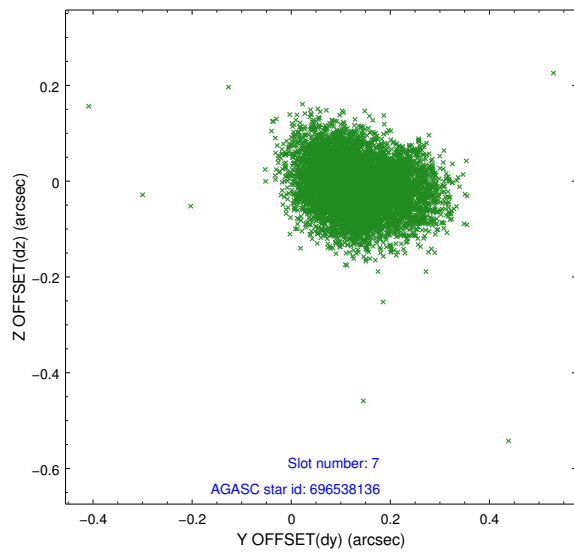
2.4.3 Slot 5



2.4.4 Slot 6

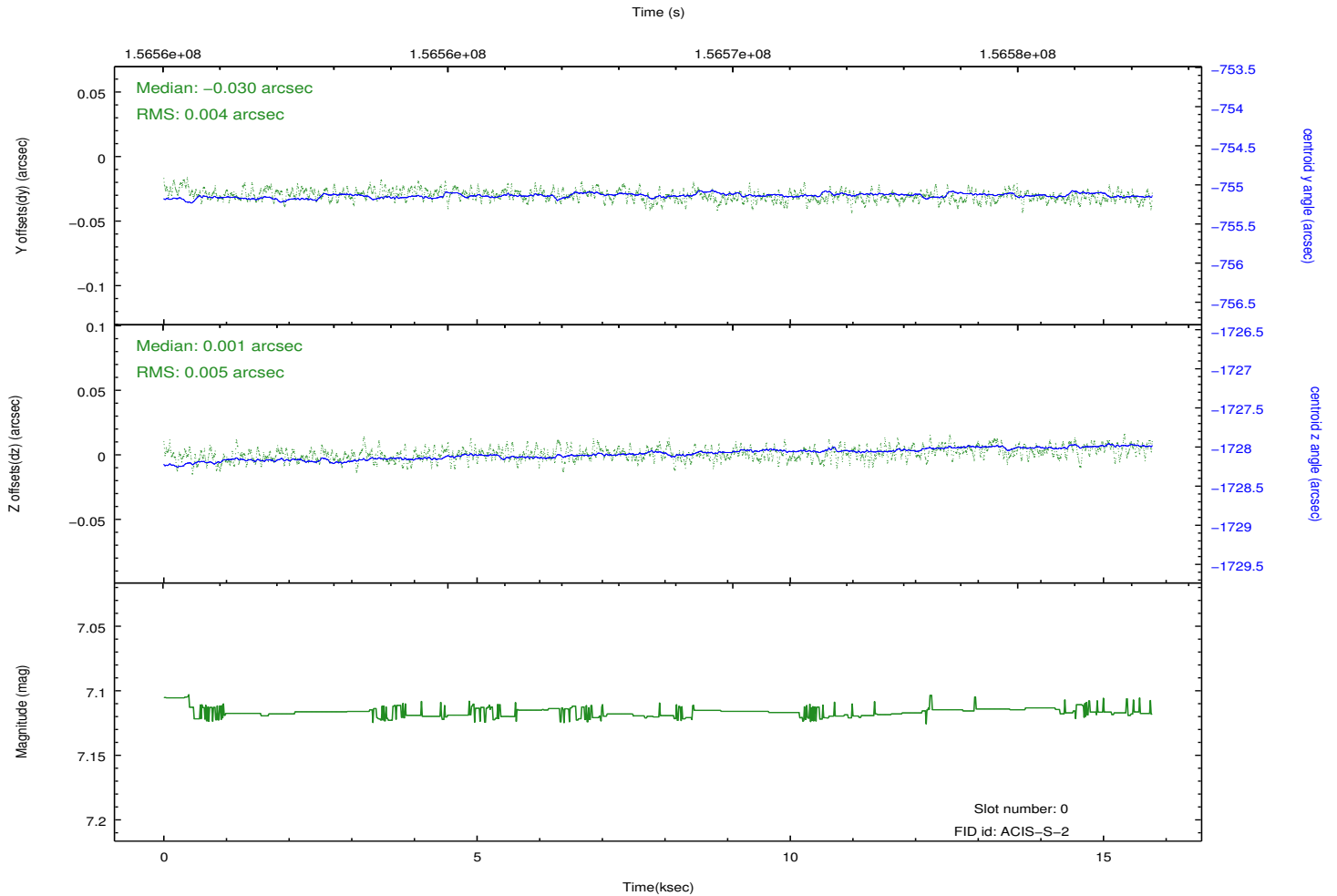
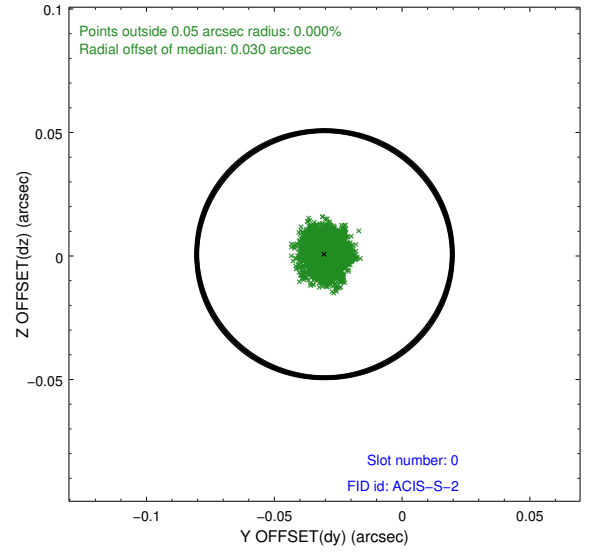
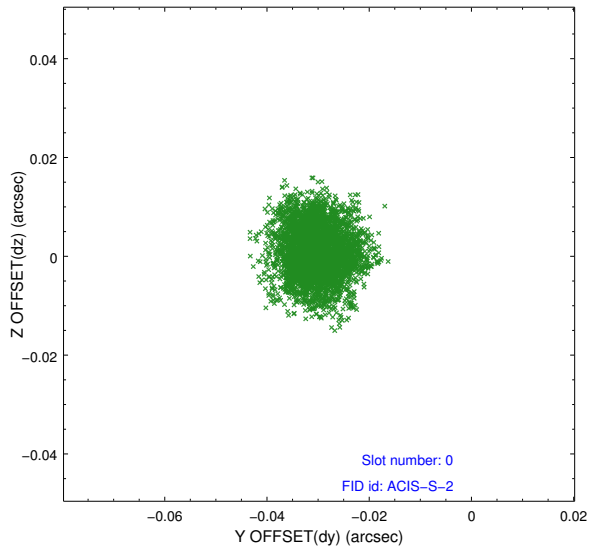


2.4.5 Slot 7

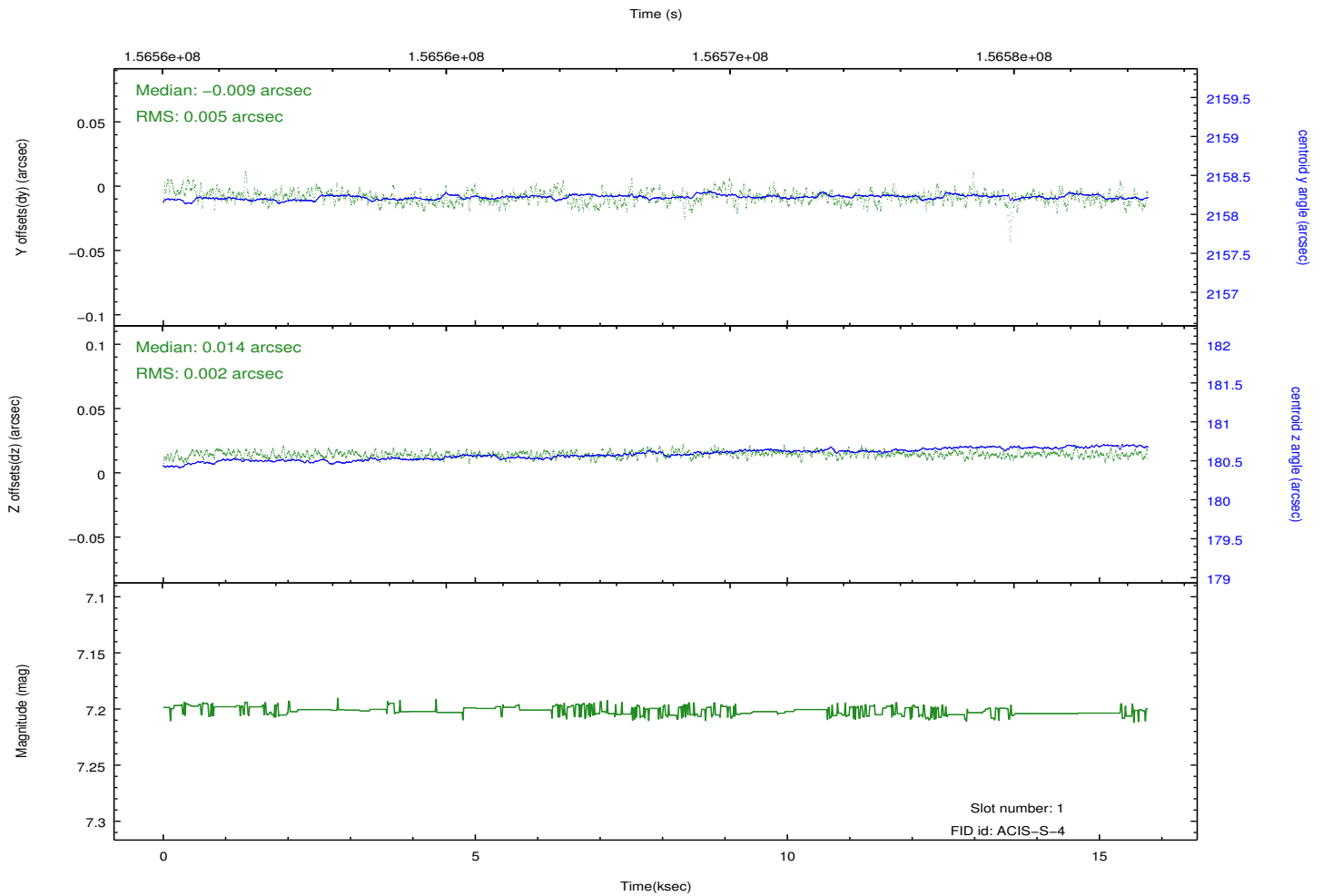
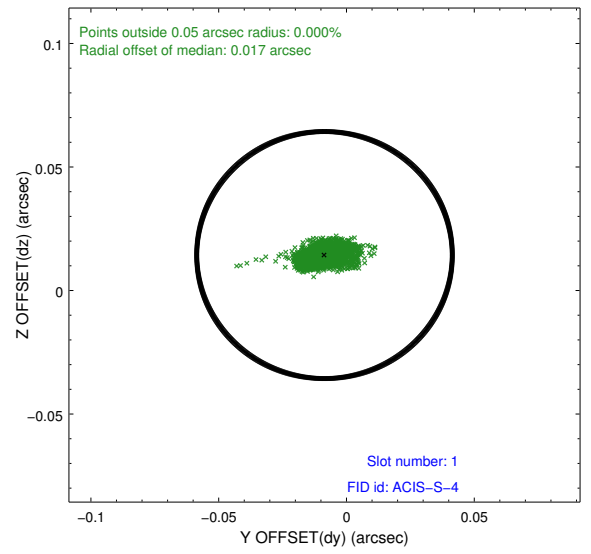
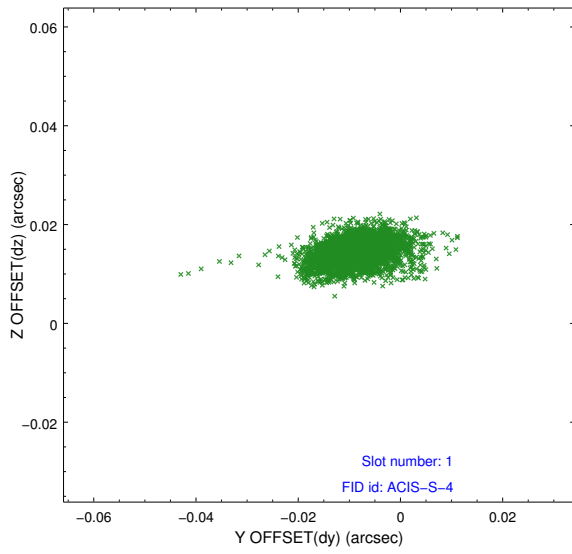


2.5 FID Slots

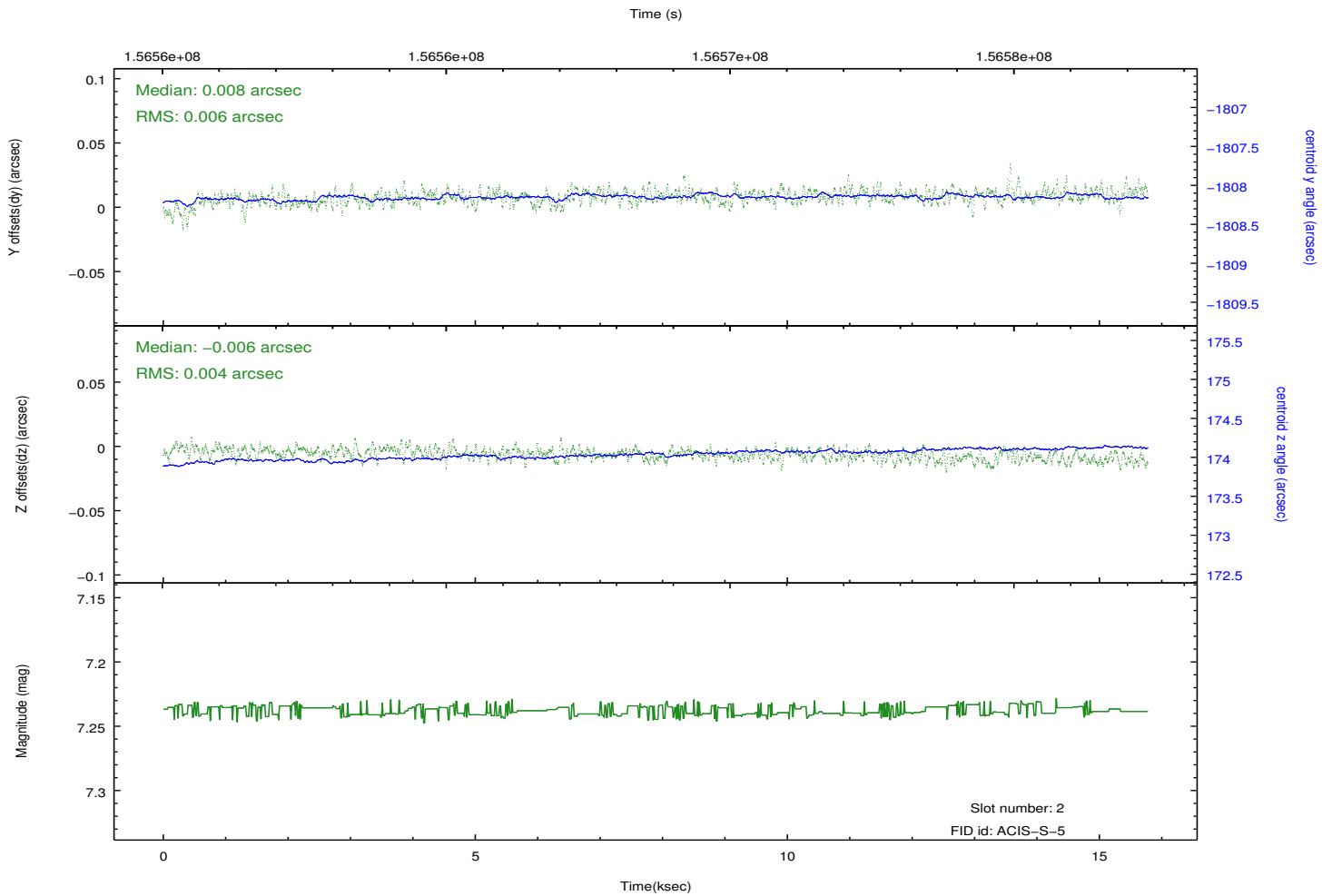
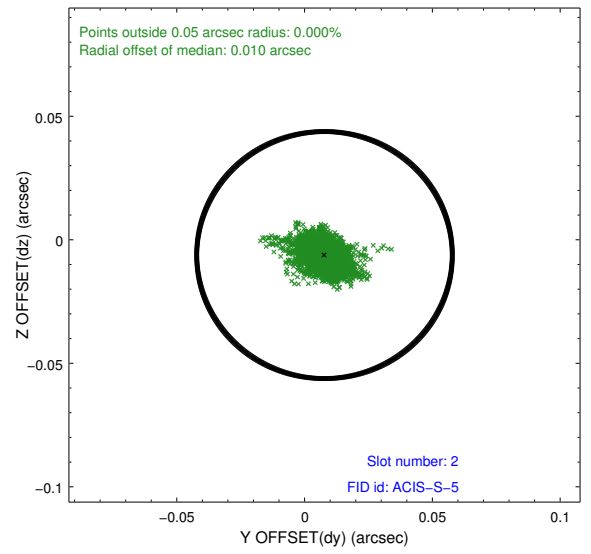
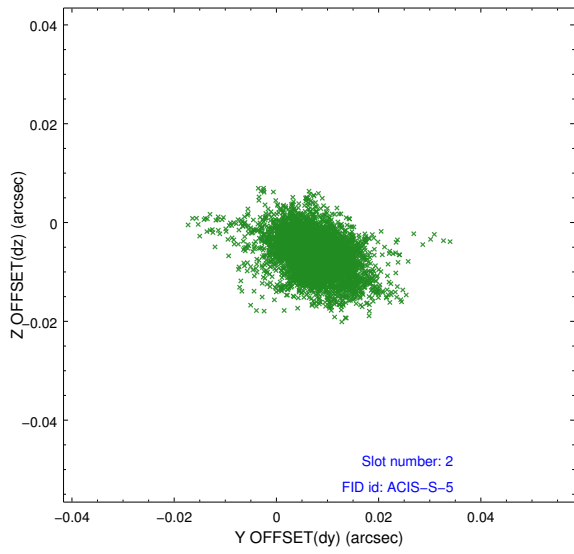
2.5.1 Slot 0



2.5.2 Slot 1



2.5.3 Slot 2



A Summary

A.1 Status

V&V Scientist	Jen Lauer
V&V Date (YYYY-MM-DD)	2012.10.31
V&V Edition	1
V&V Disposition and Status	OK
V&V Charge Time	15.746

A.2 Comments