

V&V Reference Report

L2 ASCDS Version : 8.4.5

Observation 4060 - L2 Version 3
Chandra X-Ray Center

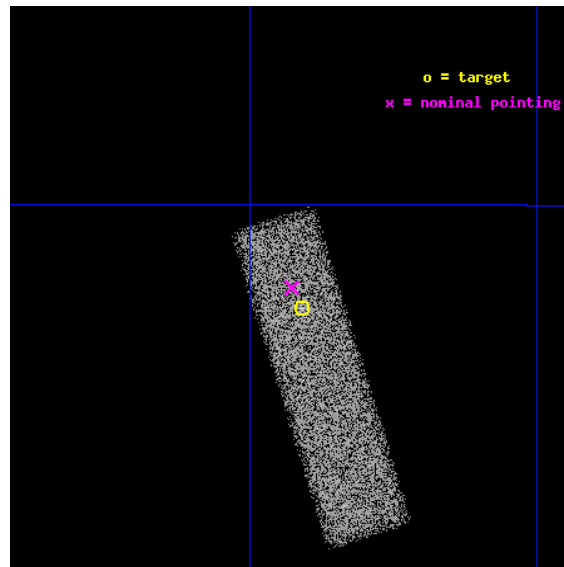
L2 Processing Date : Oct 24 2012

Contents

1	Front	2
2	OBI	3
2.1	OBI	3
2.1.1	Images	3
2.1.2	Bias	3
2.1.3	Parameters	4
2.1.4	Events	4
2.2	Compared Parameters	5
2.3	Aspect	6
2.4	Star Slots	9
2.4.1	Slot 3	9
2.4.2	Slot 4	10
2.4.3	Slot 5	11
2.4.4	Slot 6	12
2.4.5	Slot 7	13
2.5	FID Slots	14
2.5.1	Slot 0	14
2.5.2	Slot 1	15
2.5.3	Slot 2	16
A	Summary	17
A.1	Status	17
A.2	Comments	17

1 Front

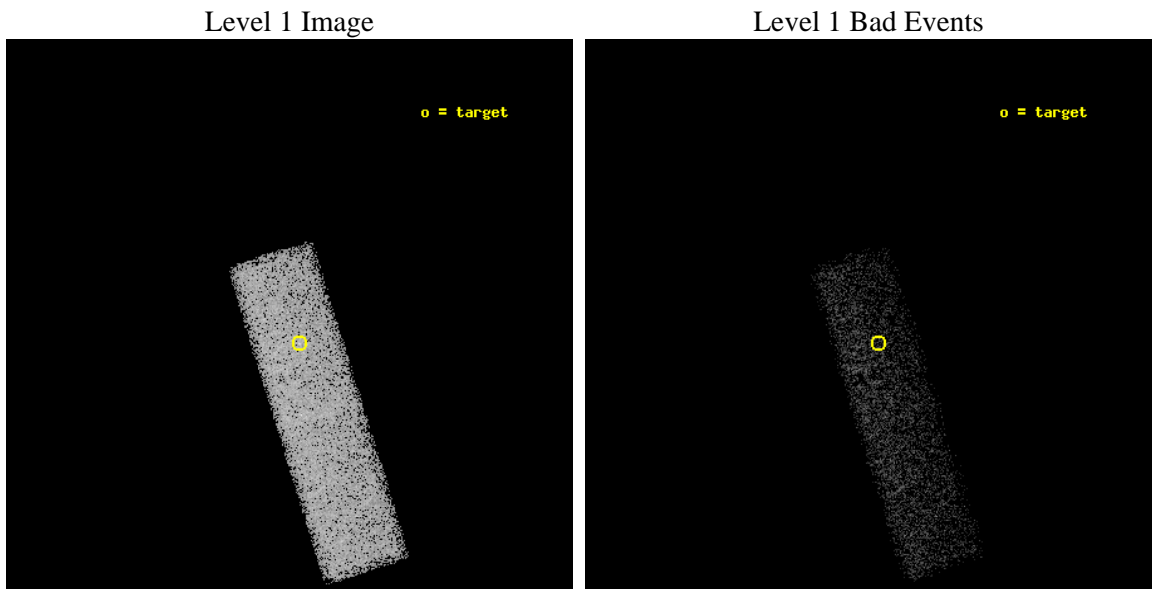
seq_num	700739	Sequence number
obs_id	4060	Observation id
title	ELUSIVE ACTIVE GALACTIC NUCLEI IN STARBURST GALAXIES	Proposal titl
observer	DR. ROBERTO MAIOLINO	Principal investigator
object	NGC4418	Source name
dtcycle	0	
cycle	P	events from which exps? Prim/Second/Both
ra_targ	186.7275	Observer's specified target RA [deg]
dec_targ	-0.8775	Observer's specified target Dec [deg]
ra_nom	186.73192594911	Nominal RA [deg]
dec_nom	-0.86893668484323	Nominal Dec [deg]
roll_nom	72.625748056838	Nominal Roll [deg]
revision	3	Processing version of data
ontime	20829.386538982	Sum of GTIs [s]
livetime	19812.980632534	Livetime [s]
ontime7	20829.386538982	Sum of GTIs [s]
l2events	19529	Number of level 2 events



2 OBI

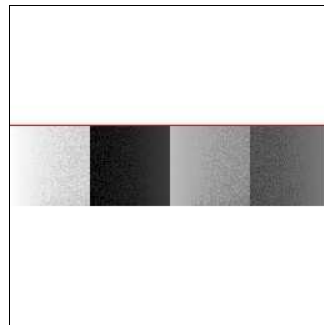
2.1 OBI

2.1.1 Images



2.1.2 Bias

Chip 7



2.1.3 Parameters

obi_num	0	Obi number	sched_exp_time	20000.000000	[s] Scheduled observation exposure time
ascdsver	8.4.5	Processing system revision	ontime	20829.386538982	Sum of GTIs [s]
caldbver	4.5.2	 	ontime7	20829.386538982	Sum of GTIs [s]
date	2012-10-24T14:01:24	Date and time of file creation	l1events	44992	Number of level 1 events
revision	3	Processing version of data			

2.1.4 Events

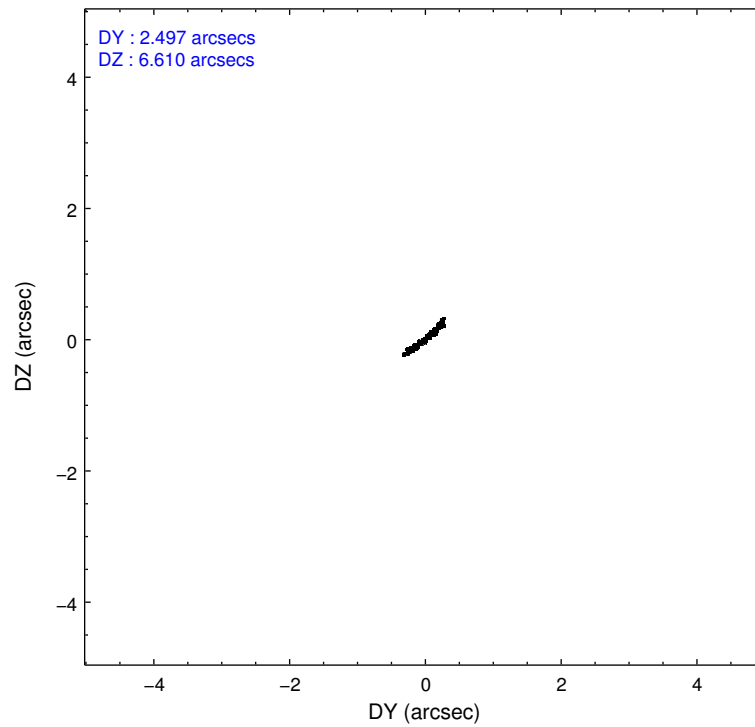
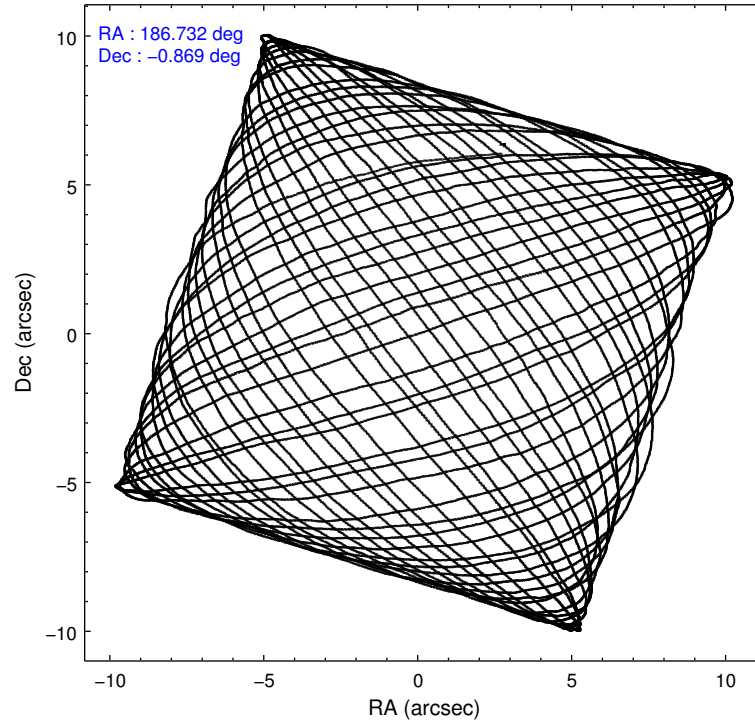
	ccd 7
level 1 events	44992
rejected events	24799
rejected %	55%

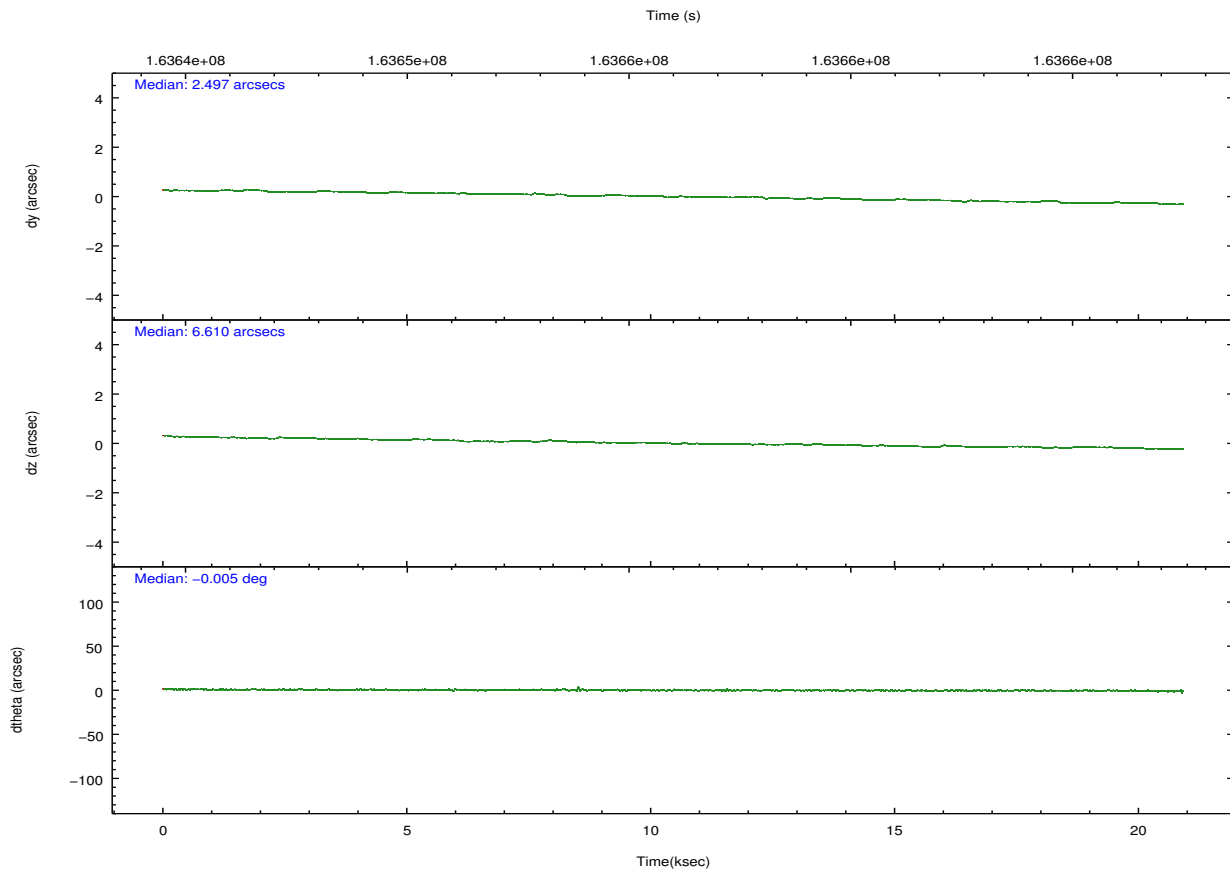
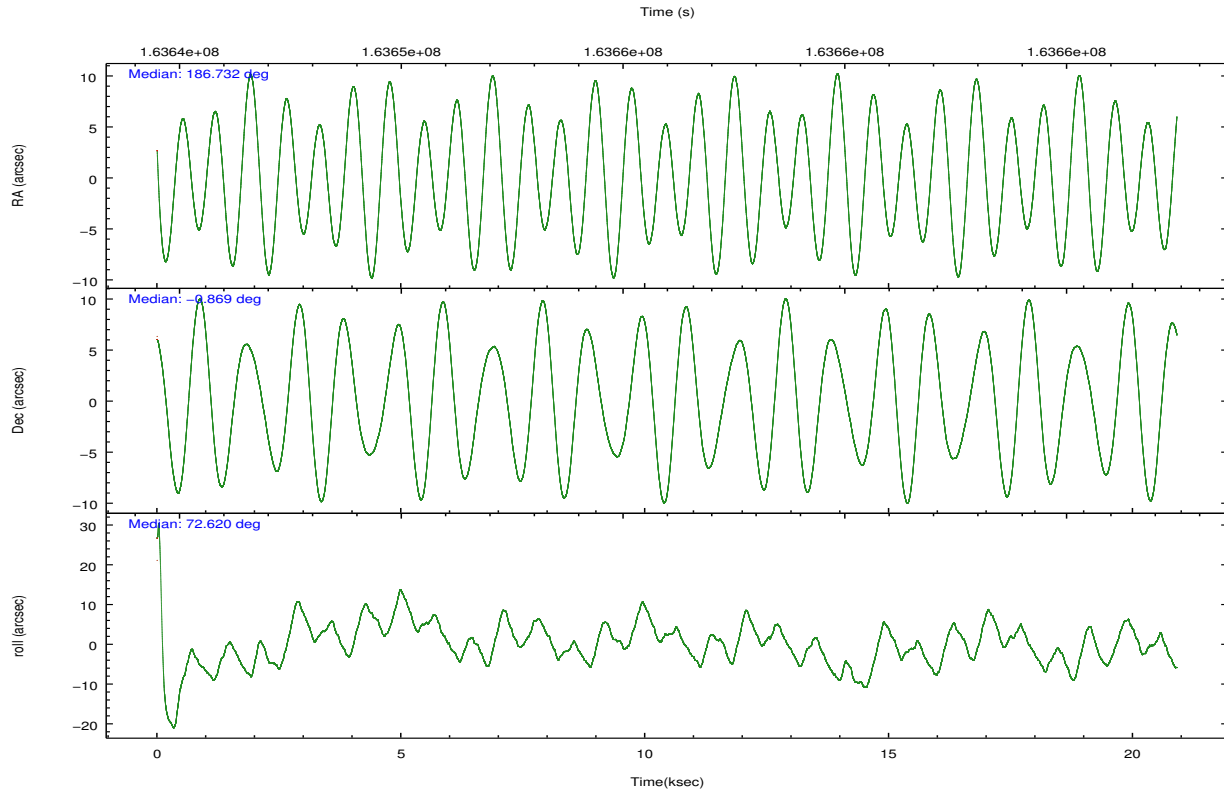
	ccd 7
grade 0 events	2168
	4%
grade 1 events	54
	0%
grade 2 events	4053
	9%
grade 3 events	2242
	4%
grade 4 events	2163
	4%
grade 5 events	4305
	9%
grade 6 events	9570
	21%
grade 7 events	20437
	45%

2.2 Compared Parameters

Parameter	Planned	Actual	Parameter	Planned	Actual
Instrument	ACIS	ACIS	Obspar format version number	7	7
Detector	ACIS-7	ACIS-7	Obspar file type	PREDICTED	ACTUAL
Grating	NONE	NONE	Obspar update status	NONE	UPDATED
Data mode	FAINT	FAINT	Number of optional ACIS chips dropped	0	0
Observation mode	POINTING	POINTING	On-chip summing requested	N	N
[deg] Pointing RA	186.738275	186.7319259491052	Subarray requested	CUSTOM	1/4
[deg] Pointing Dec	-0.895416	-0.8689366848432261	Subarray start row	384	385
[deg] Pointing Roll	72.469210	72.62574805683766	Subarray row count	256	256
[mm] SIM focus pos	-0.684267	-0.6828225247311905	Alternating exposures requested	N	N
[mm] SIM defocus	0	0.001444936568705701	[s] Primary exposure time	0.000000	0.8
[mm] SIM translation stage pos	-190.132523	-190.1400660498719			
[mm] SIM translation stage offset	0	0.00754346686406393			
[s] Observation start time (MET)	163646449.184000	163645127.98889			
Observation start date	2003-03-10T01:19:45	2003-03-10T00:58:47			
[s] Observation end time (MET)	163666449.184000	163667179.32732			
Observation end date	2003-03-10T06:53:05	2003-03-10T07:06:19			
Read mode	TIMED	TIMED			

2.3 Aspect



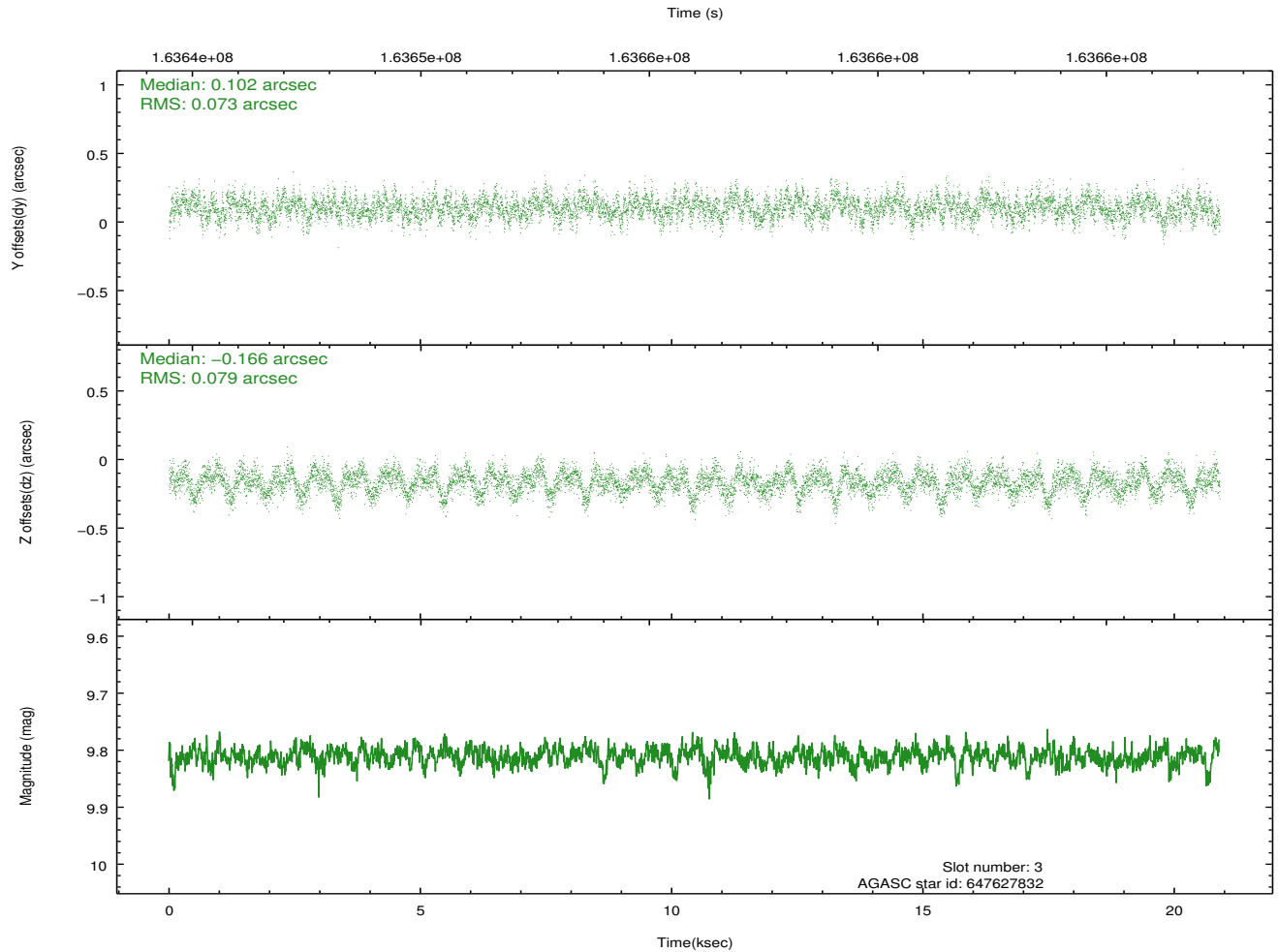
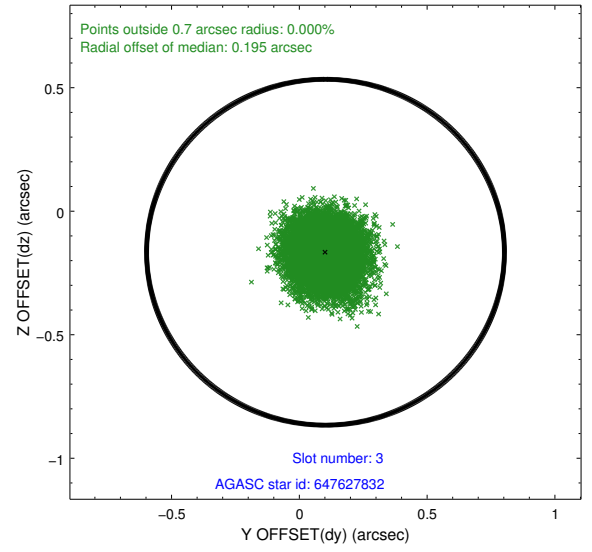
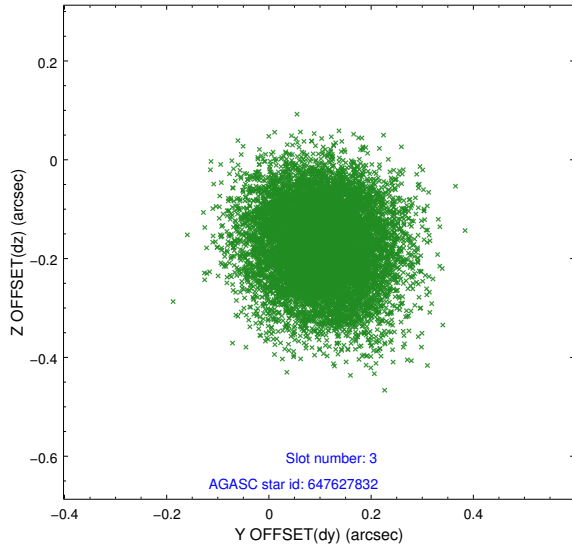


Slot Statistics

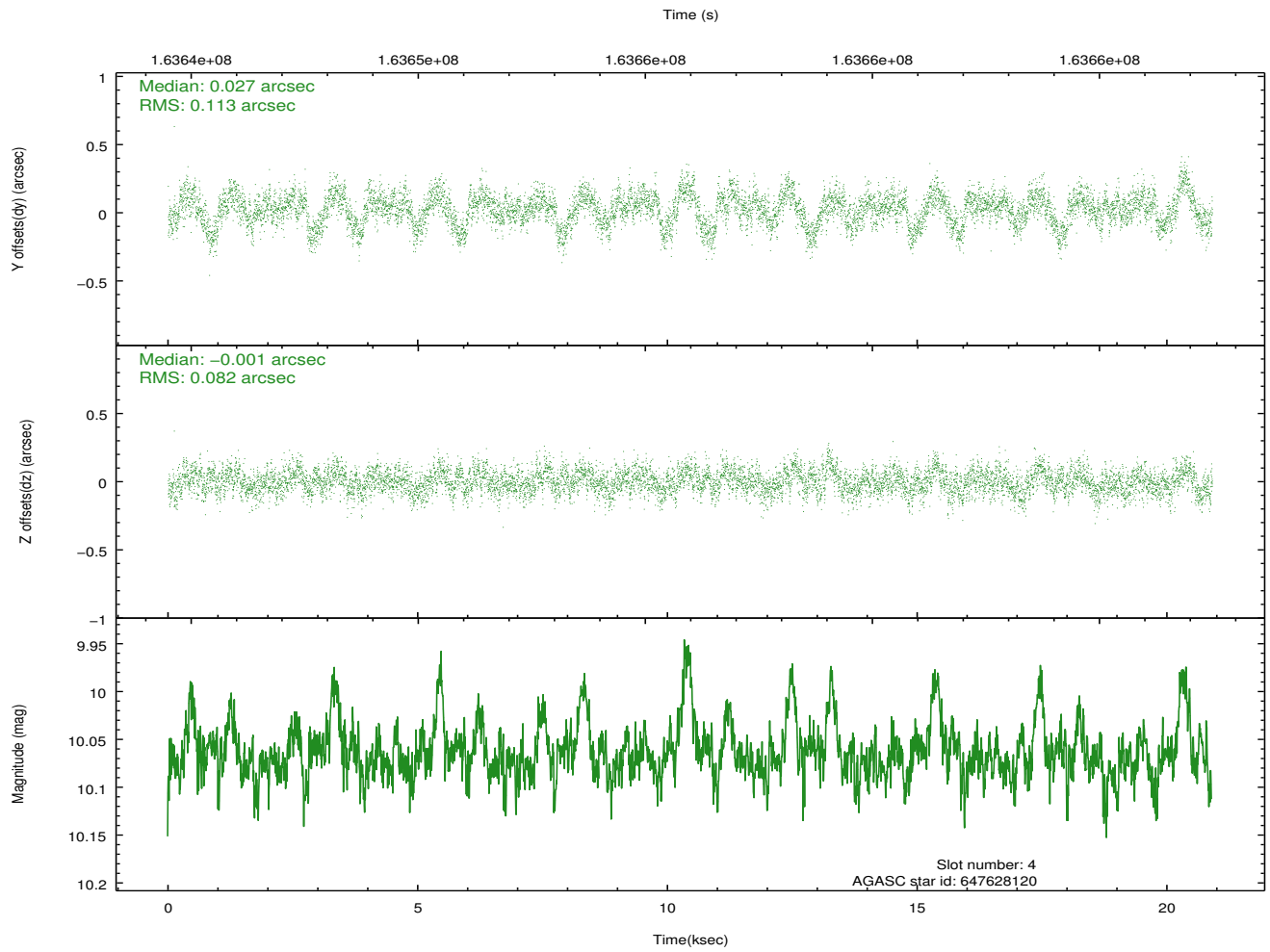
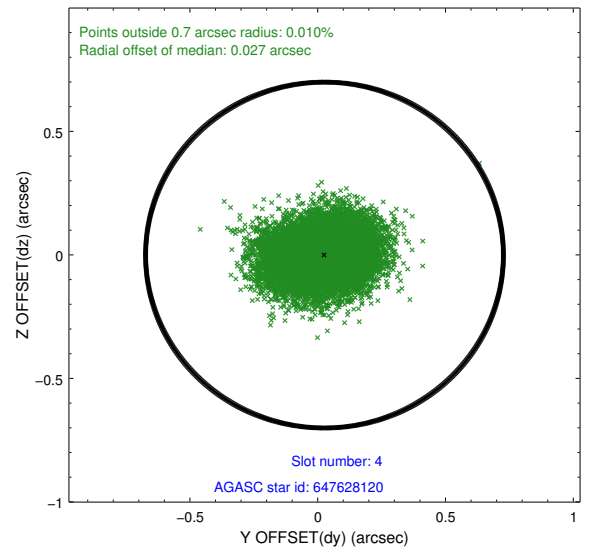
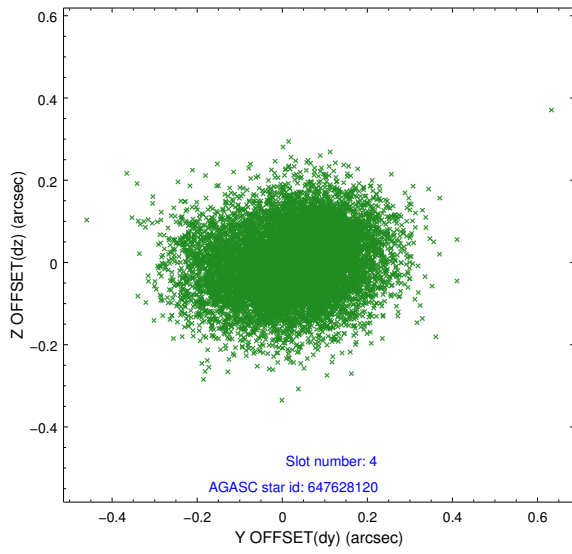
slot	status	id	mag	n_pts	med_dy	med_dz	dr1	dr2	ra	dec	mean_y	mean_z
0	FID	ACIS-S-2	7.11	5100	-0.040	0.005	0.009	0.014	0.000000	0.000000	-755.13	-1727.79
1	FID	ACIS-S-4	7.20	5100	-0.003	0.018	0.006	0.011	0.000000	0.000000	2158.07	180.57
2	FID	ACIS-S-5	7.24	5100	0.012	-0.014	0.011	0.018	0.000000	0.000000	-1807.73	174.35
3	GUIDE	647627832	9.81	10173	0.102	-0.166	0.116	0.183	186.462633	-1.110595	-1037.78	713.39
4	GUIDE	647628120	10.07	10169	0.027	-0.001	0.148	0.242	187.040020	-0.447035	1866.63	-549.23
5	GUIDE	647628336	9.23	10191	-0.034	0.061	0.083	0.134	186.324925	-1.069909	-1046.96	1229.45
6	GUIDE	647630656	9.48	10189	-0.146	0.124	0.103	0.166	187.256425	-0.901543	540.87	-1784.79
7	GUIDE	647635072	9.51	10193	0.055	-0.013	0.098	0.158	187.100974	-1.198713	-647.61	-1573.92

2.4 Star Slots

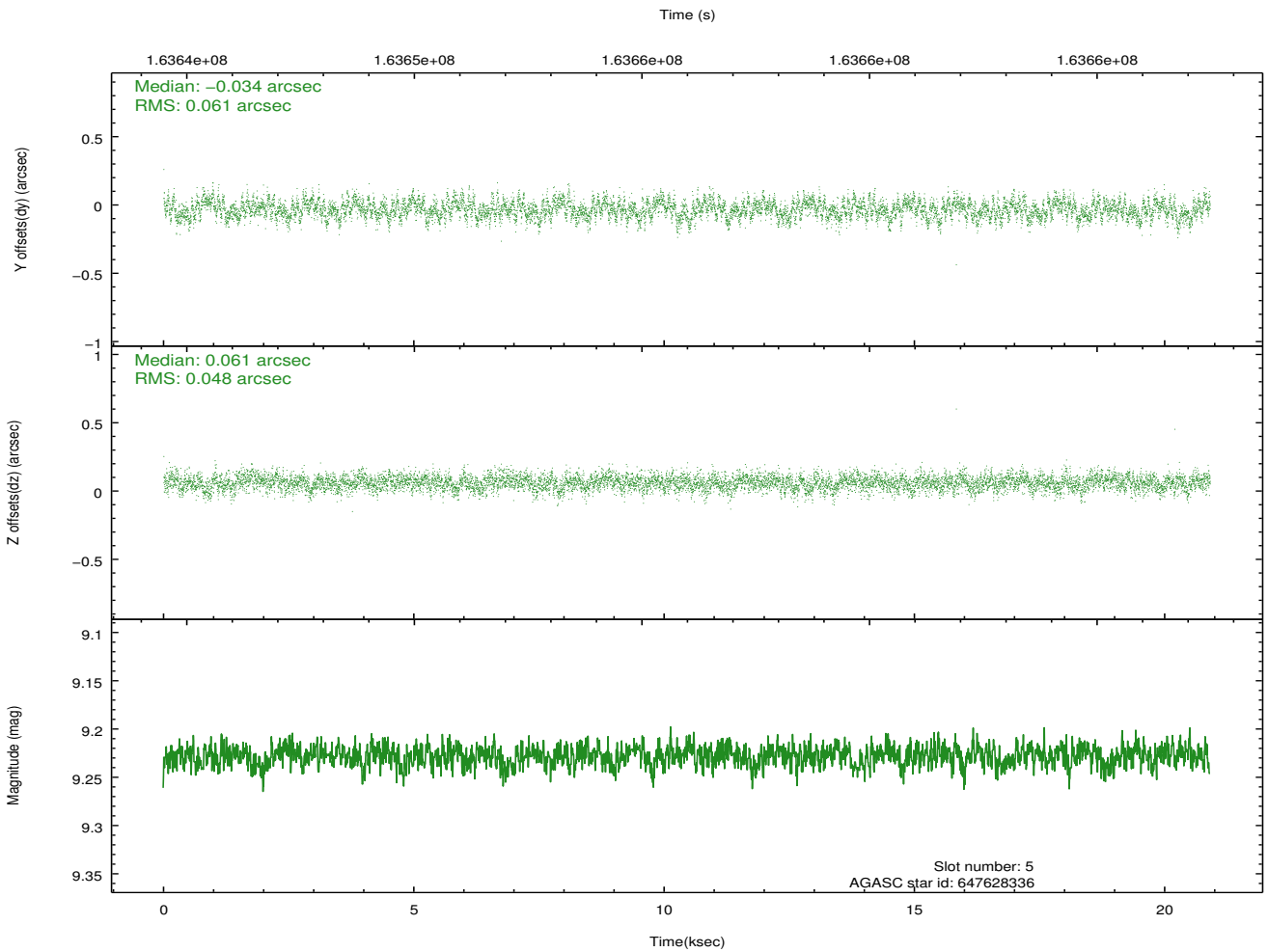
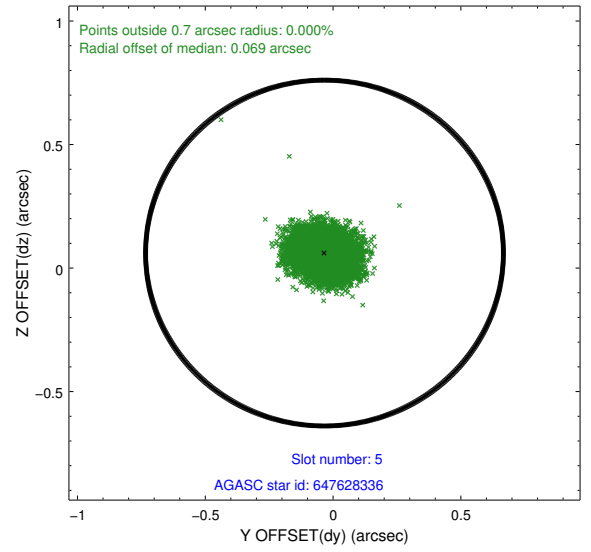
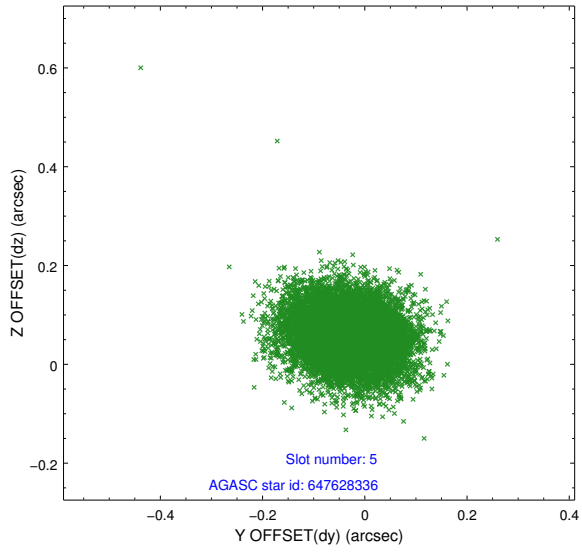
2.4.1 Slot 3



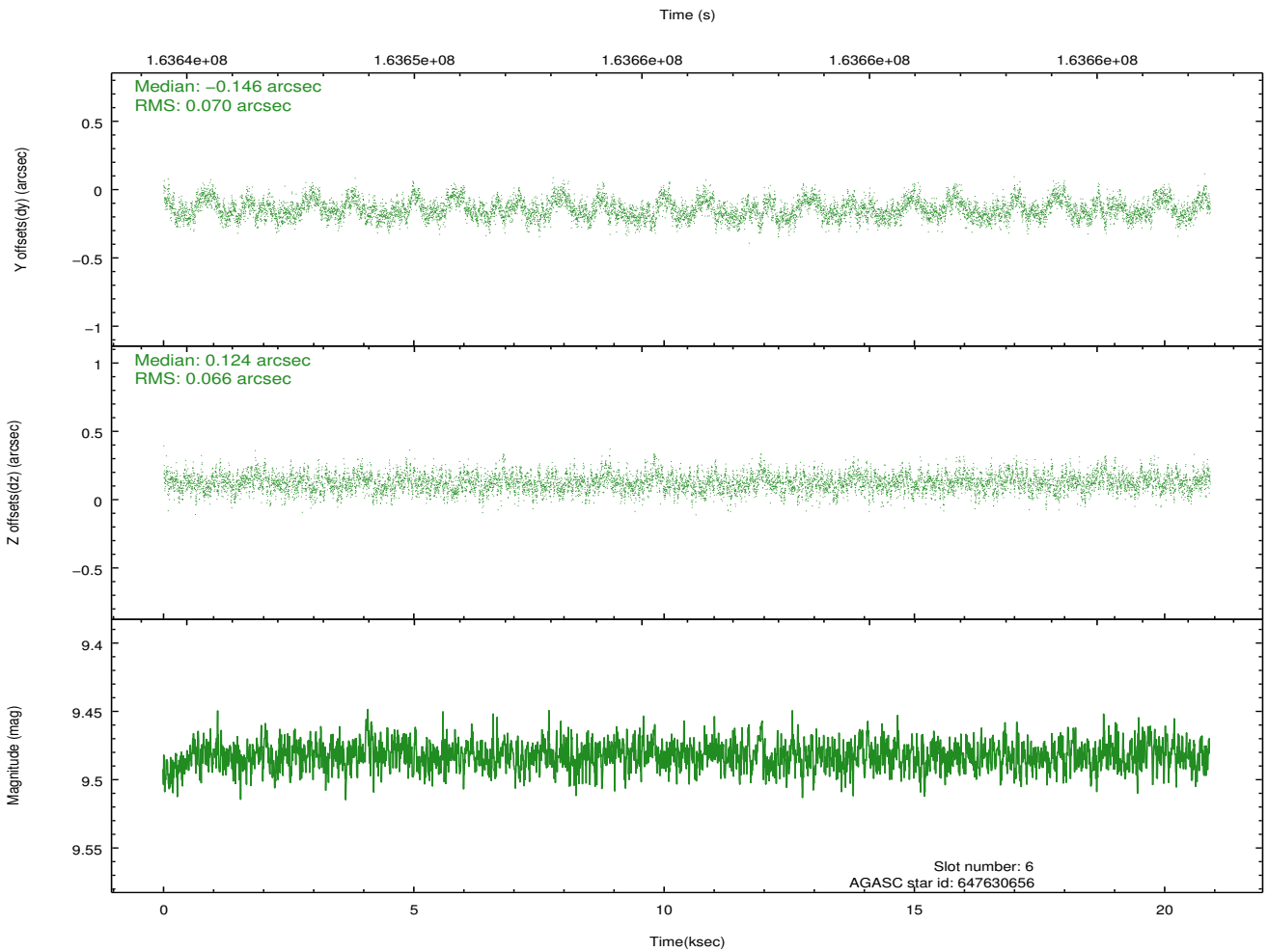
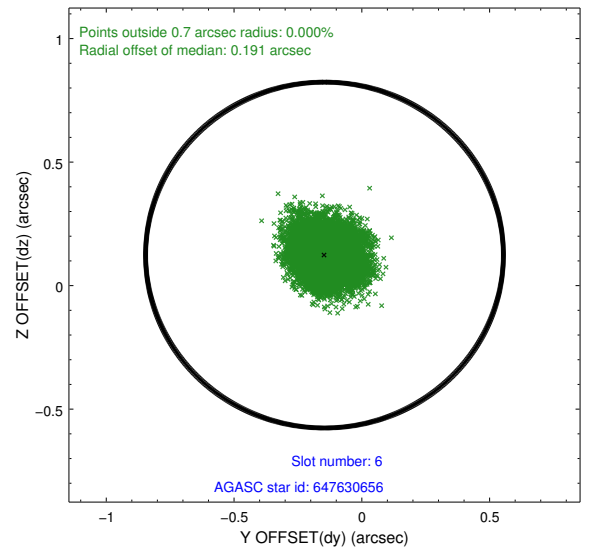
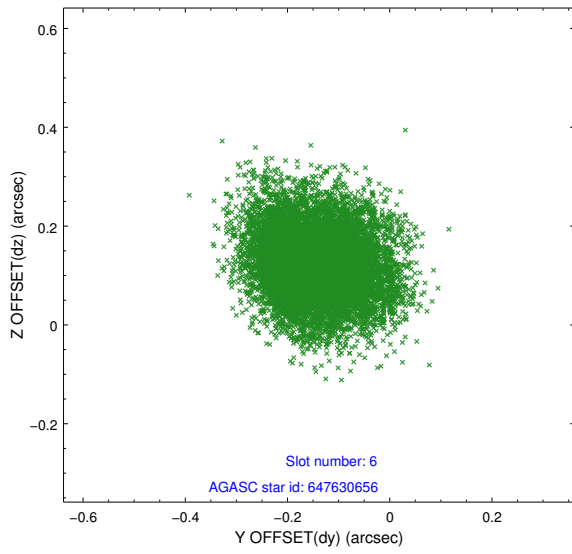
2.4.2 Slot 4



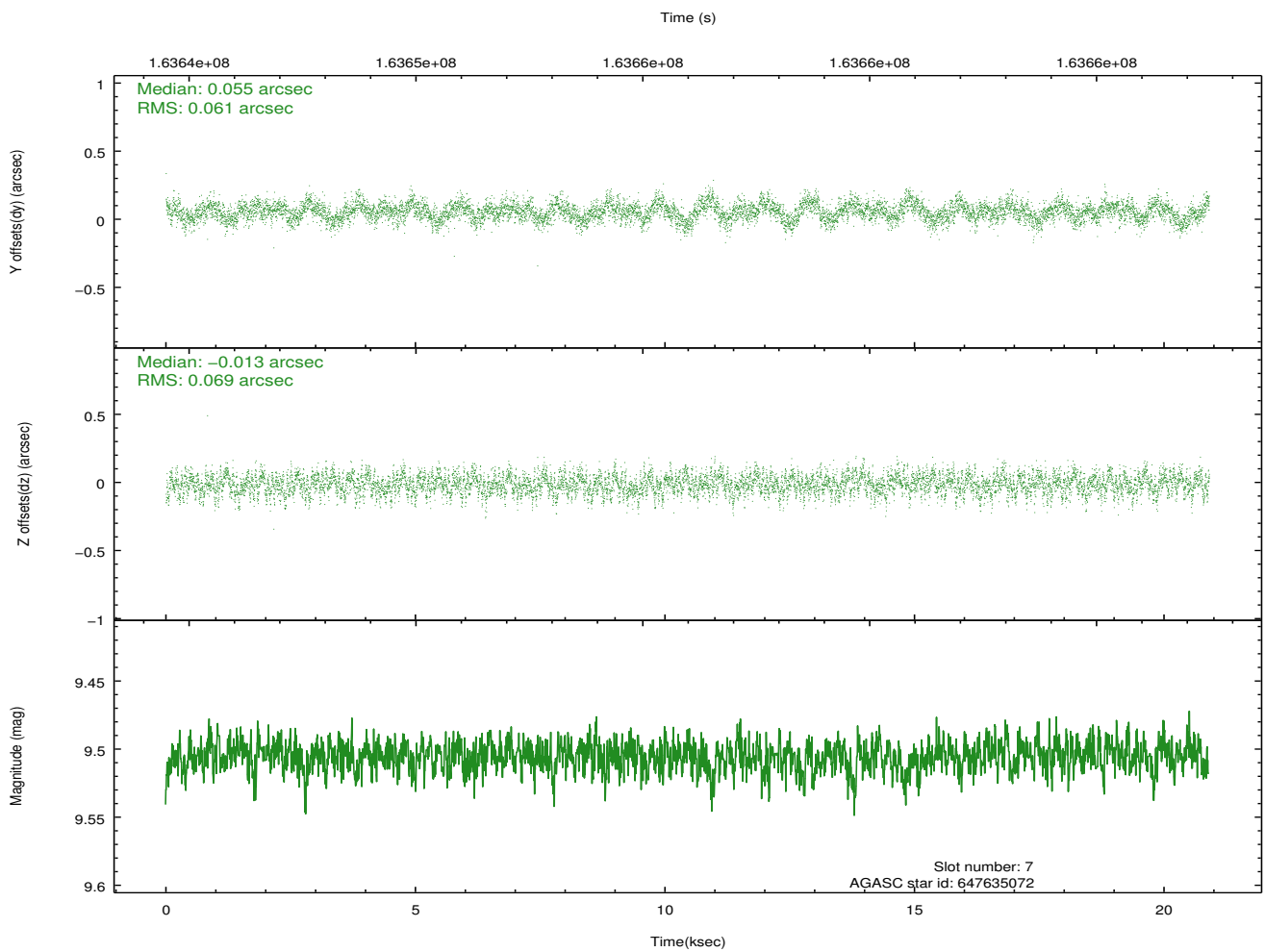
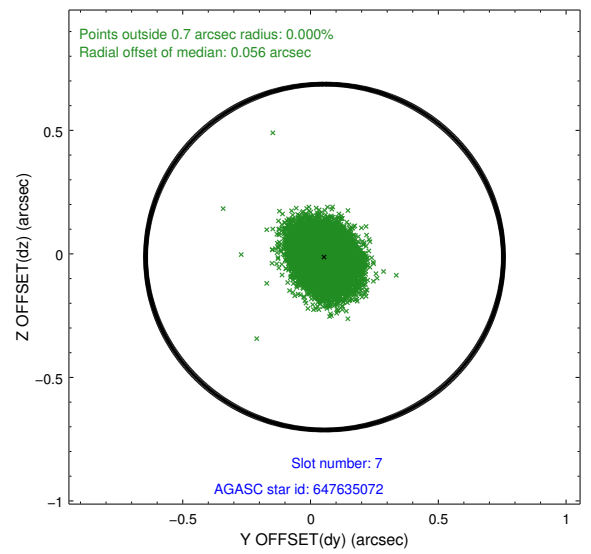
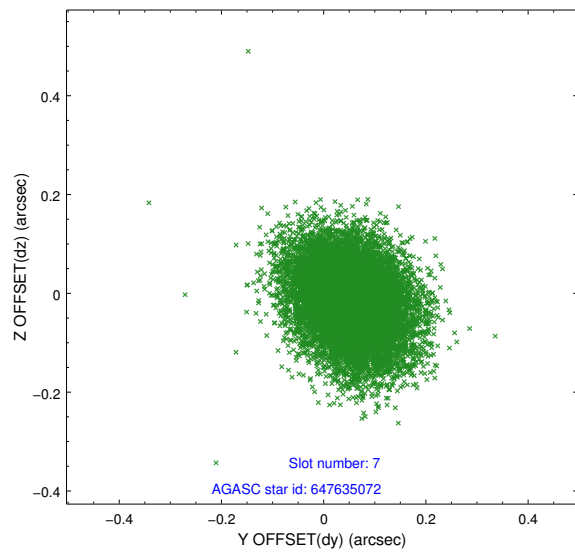
2.4.3 Slot 5



2.4.4 Slot 6

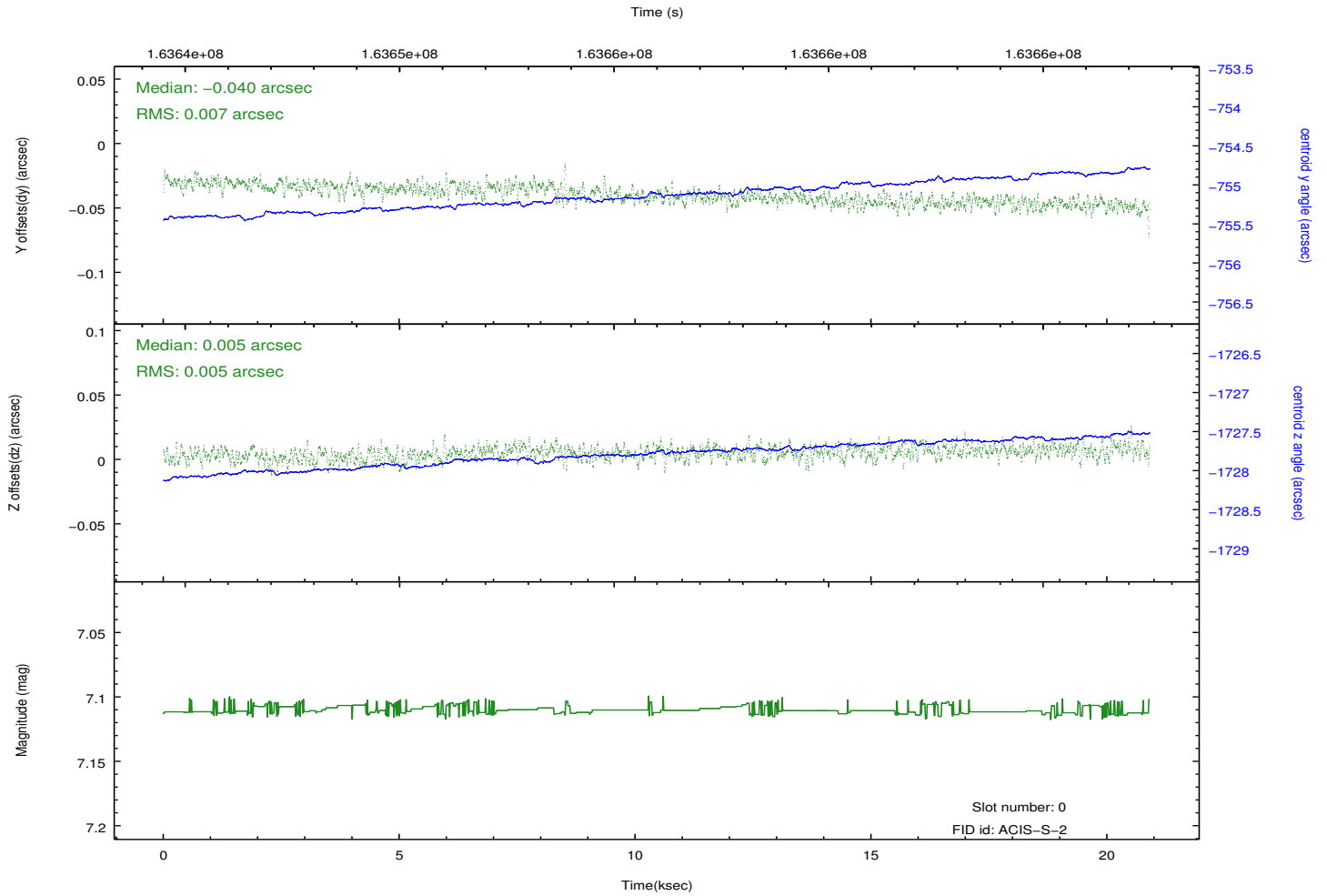
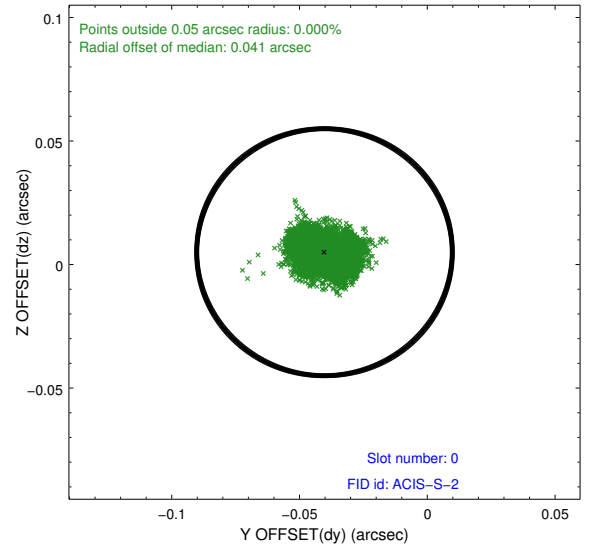
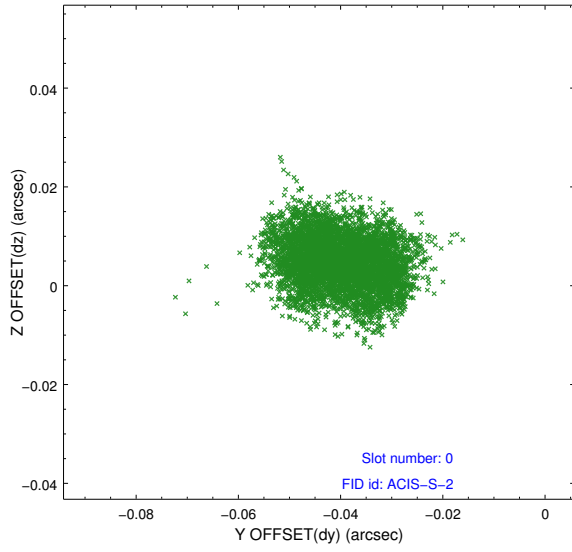


2.4.5 Slot 7

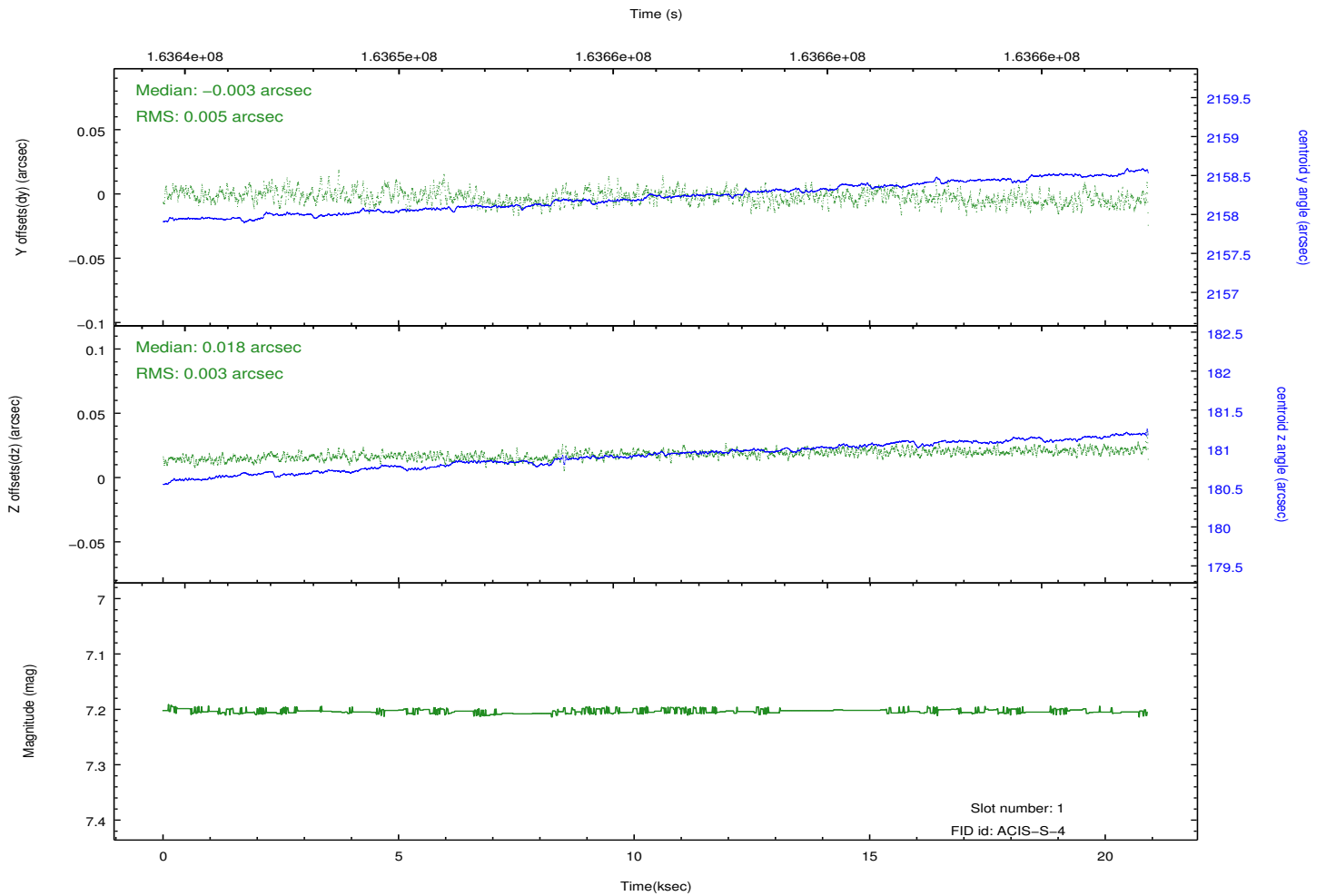
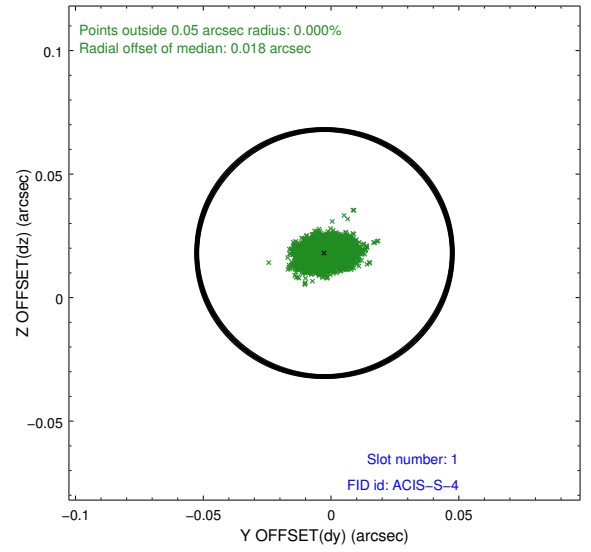
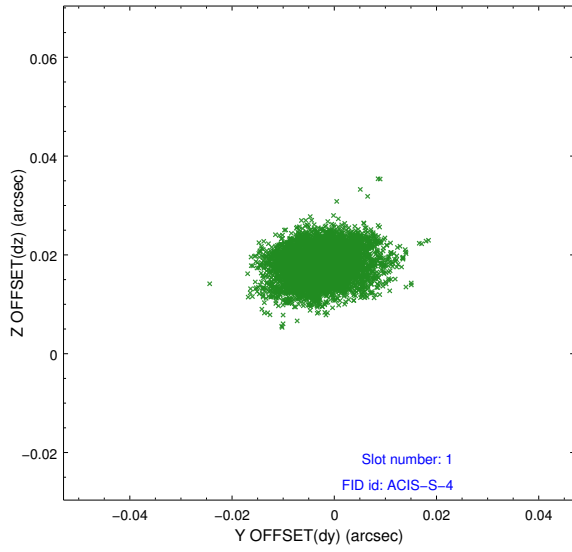


2.5 FID Slots

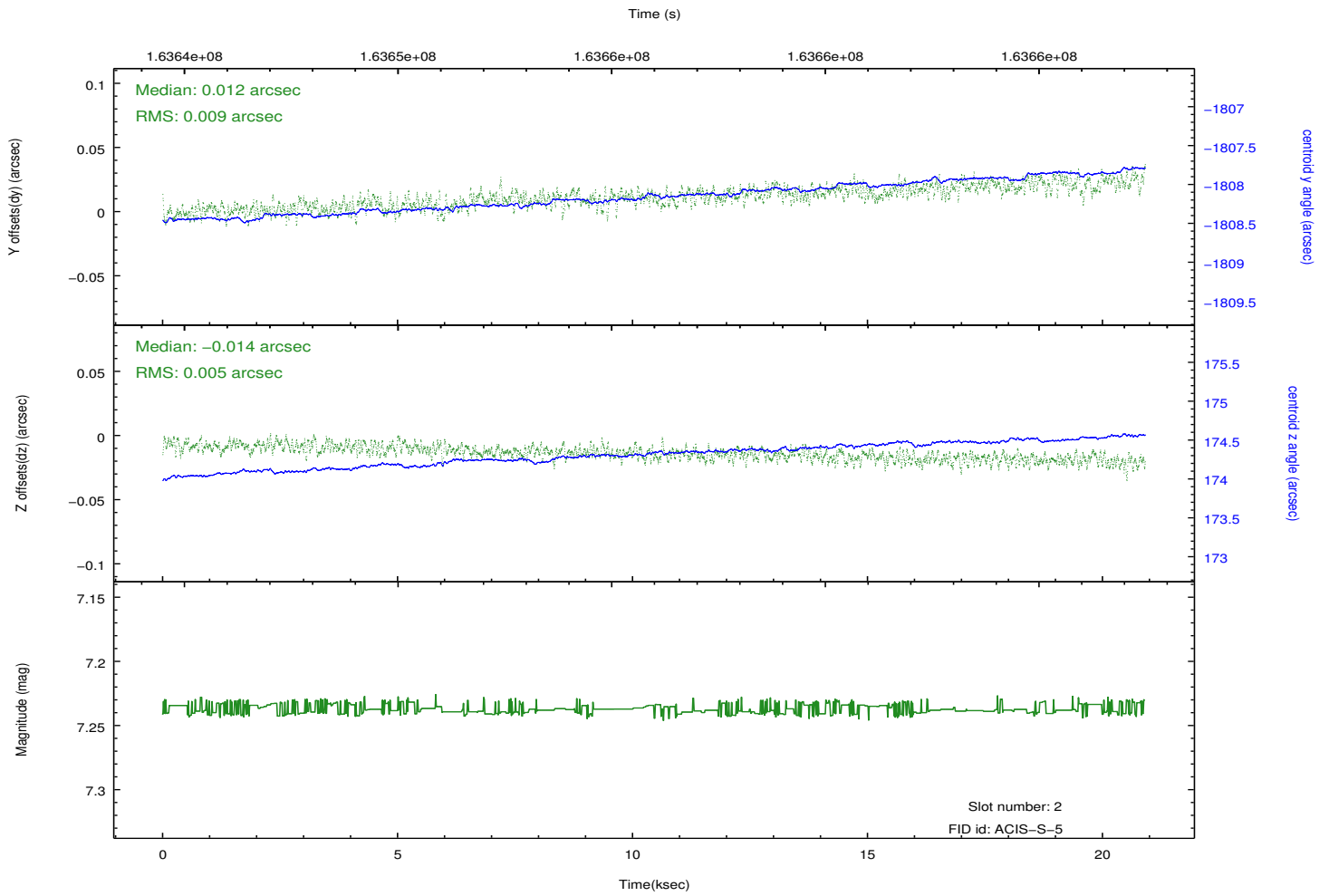
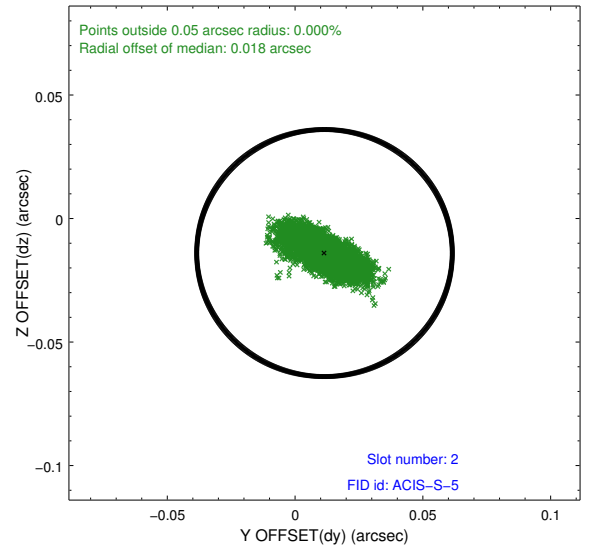
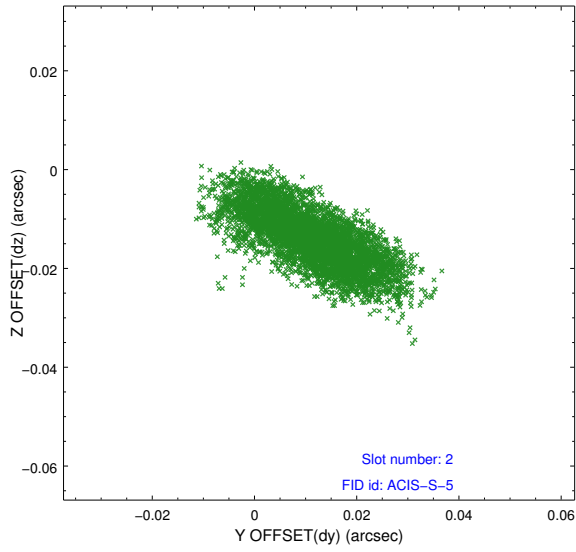
2.5.1 Slot 0



2.5.2 Slot 1



2.5.3 Slot 2



A Summary

A.1 Status

V&V Scientist	Jen Lauer
V&V Date (YYYY-MM-DD)	2012.12.06
V&V Edition	1
V&V Disposition and Status	OK
V&V Charge Time	20.829

A.2 Comments