

V&V Reference Report

L2 ASCDS Version : 8.4.5

Observation 4180 - L2 Version 3
Chandra X-Ray Center

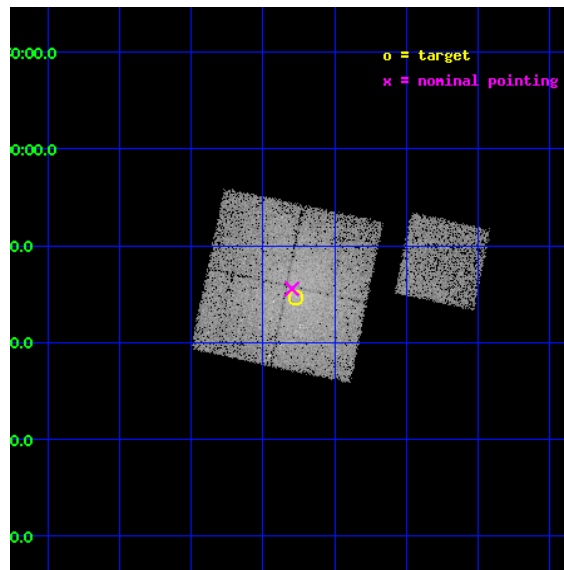
L2 Processing Date : Nov 3 2012

Contents

1	Front	2
2	OBI	3
2.1	OBI	3
2.1.1	Images	3
2.1.2	Bias	3
2.1.3	Parameters	4
2.1.4	Events	4
2.2	Compared Parameters	5
2.3	Aspect	6
2.4	Star Slots	9
2.4.1	Slot 3	9
2.4.2	Slot 4	10
2.4.3	Slot 5	11
2.4.4	Slot 6	12
2.4.5	Slot 7	13
2.5	FID Slots	14
2.5.1	Slot 0	14
2.5.2	Slot 1	15
2.5.3	Slot 2	16
A	Summary	17
A.1	Status	17
A.2	Comments	17

1 Front

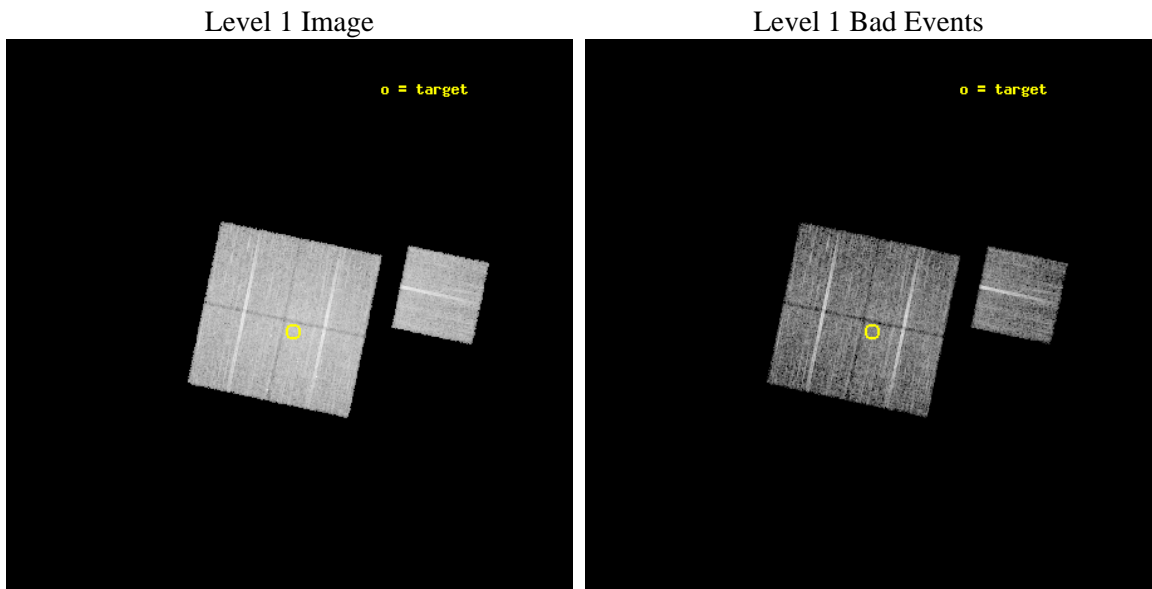
seq_num	800336	Sequence number
obs_id	4180	Observation id
title	THE HIFLUGCS CLUSTER SURVEY: A CORNERSTONE FOR COSMOLOGY	Proposal
observer	Dr. CRAIG SARAZIN	Principal investigator
object	A0119	Source name
dtcycle	0	
cycle	P	events from which exps? Prim/Second/Both
ra_targ	14.067208	Observer's specified target RA [deg]
dec_targ	-1.255111	Observer's specified target Dec [deg]
ra_nom	14.074537781967	Nominal RA [deg]
dec_nom	-1.2406647799919	Nominal Dec [deg]
roll_nom	101.8980540137	Nominal Roll [deg]
revision	3	Processing version of data
ontime	12089.795674503	Sum of GTIs [s]
livetime	11931.833593637	Livetime [s]
ontime0	12092.813514829	Sum of GTIs [s]
ontime1	12092.85457474	Sum of GTIs [s]
ontime2	12092.895614713	Sum of GTIs [s]
ontime3	12089.795674503	Sum of GTIs [s]
ontime6	12092.772494704	Sum of GTIs [s]
l2events	66221	Number of level 2 events



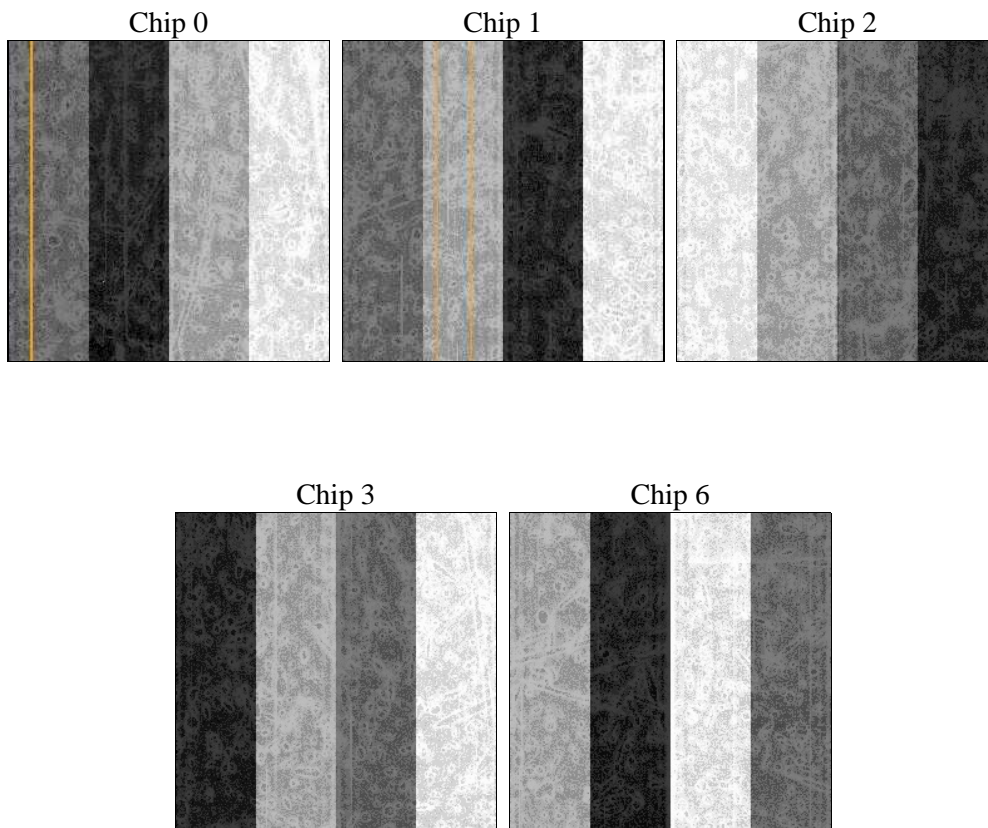
2 OBI

2.1 OBI

2.1.1 Images



2.1.2 Bias



2.1.3 Parameters

obi_num	0	Obi number	sched_exp_time	11976.859000	[s] Scheduled observation exposure time
ascdsver	8.4.5	Processing system revision	ontime	12089.795674503	Sum of GTIs [s]
caldbver	4.5.2	 	ontime0	12092.813514829	Sum of GTIs [s]
date	2012-11-03T19:17:29	Date and time of file creation	ontime1	12092.85457474	Sum of GTIs [s]
revision	3	Processing version of data	ontime2	12092.895614713	Sum of GTIs [s]
			ontime3	12089.795674503	Sum of GTIs [s]
			ontime6	12092.772494704	Sum of GTIs [s]
			l1events	355645	Number of level 1 events

2.1.4 Events

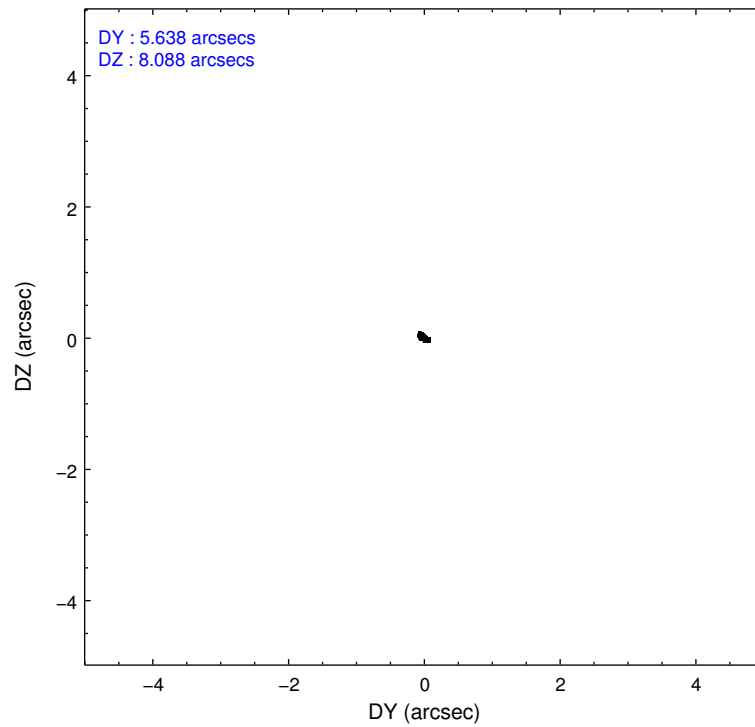
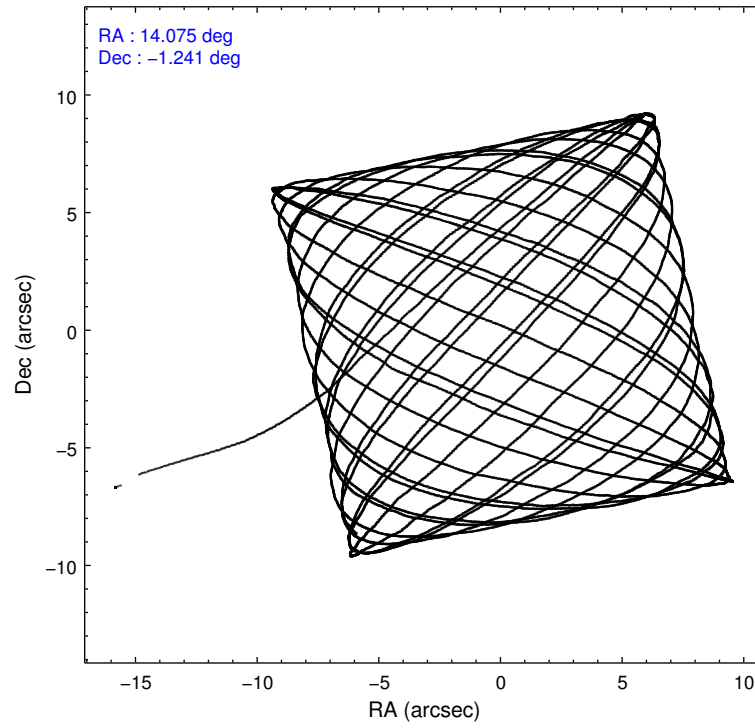
	ccd 0	ccd 1	ccd 2	ccd 3	ccd 6
level 1 events	67790	68375	75086	77988	66406
rejected events	53775	52616	58871	58595	57868
rejected %	79%	76%	78%	75%	87%

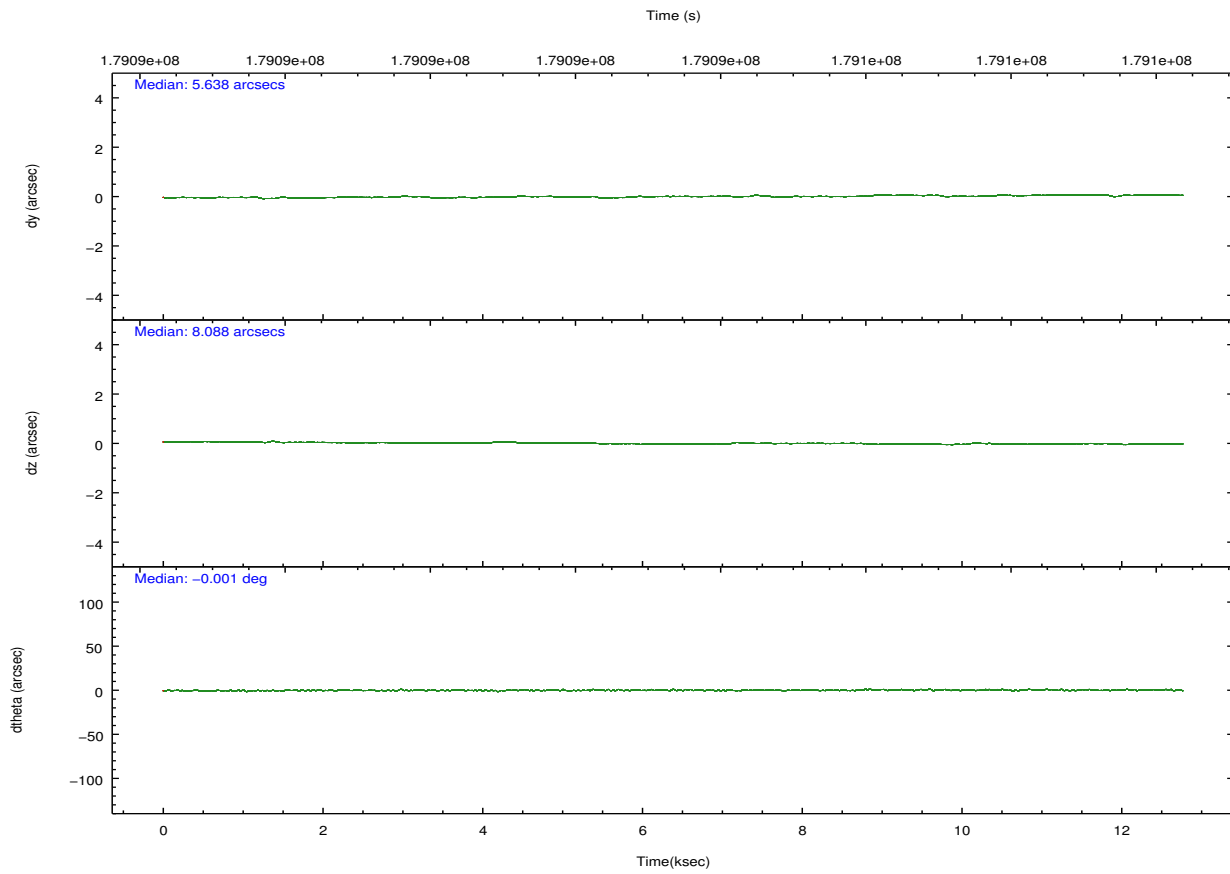
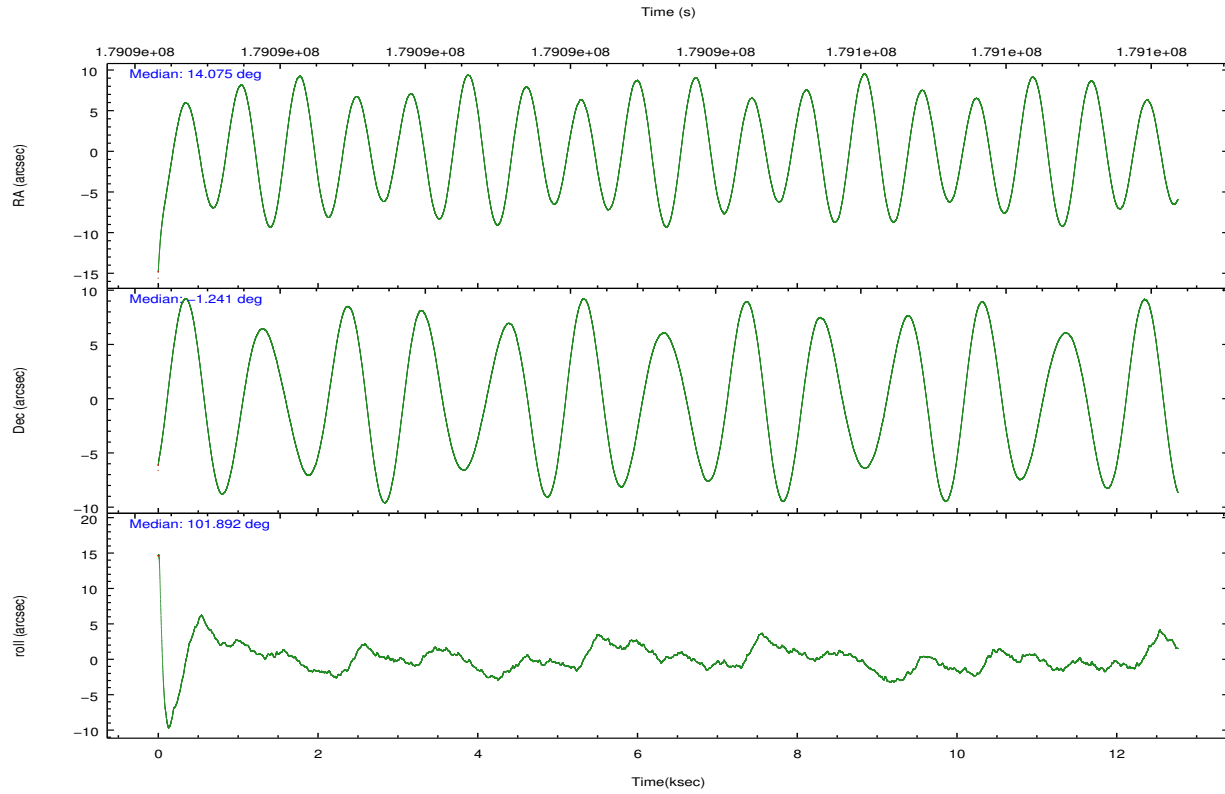
	ccd 0	ccd 1	ccd 2	ccd 3	ccd 6
grade 0 events	8518	9807	10434	13223	4116
	12%	14%	13%	16%	6%
grade 1 events	47	44	64	69	30
	0%	0%	0%	0%	0%
grade 2 events	2223	2367	2398	2502	1584
	3%	3%	3%	3%	2%
grade 3 events	991	1015	1038	1098	783
	1%	1%	1%	1%	1%
grade 4 events	926	1023	1020	1110	783
	1%	1%	1%	1%	1%
grade 5 events	2197	2435	2033	2515	2384
	3%	3%	2%	3%	3%
grade 6 events	1365	1558	1332	1467	1276
	2%	2%	1%	1%	1%
grade 7 events	51523	50126	56767	56004	55450
	76%	73%	75%	71%	83%

2.2 Compared Parameters

Parameter	Planned	Actual	Parameter	Planned	Actual
Instrument	ACIS	ACIS	Obspar format version number	7	7
Detector	ACIS-01236	ACIS-01236	Obspar file type	PREDICTED	ACTUAL
Grating	NONE	NONE	Obspar update status	NONE	UPDATED
Data mode	VFAINT	VFAINT	Number of optional ACIS chips dropped	0	0
Observation mode	POINTING	POINTING	On-chip summing requested	N	N
[deg] Pointing RA	14.092943	14.07453778196693	Subarray requested	NONE	NONE
[deg] Pointing Dec	-1.261024	-1.240664779991937	Alternating exposures requested	N	N
[deg] Pointing Roll	101.689742	101.8980540137039	[s] Primary exposure time	0.000000	3.1
[mm] SIM focus pos	-0.782348	-0.7809083437167272			
[mm] SIM defocus	0	0.001439871863259334			
[mm] SIM translation stage pos	-233.592463	-233.5874344608287			
[mm] SIM translation stage offset	0	-0.005018542100998502			
[s] Observation start time (MET)	179087748.184000	179086487.1444			
Observation start date	2003-09-04T18:34:44	2003-09-04T18:14:47			
[s] Observation end time (MET)	179099725.184000	179100040.20748			
Observation end date	2003-09-04T21:54:21	2003-09-04T22:00:40			
Read mode	TIMED	TIMED			

2.3 Aspect



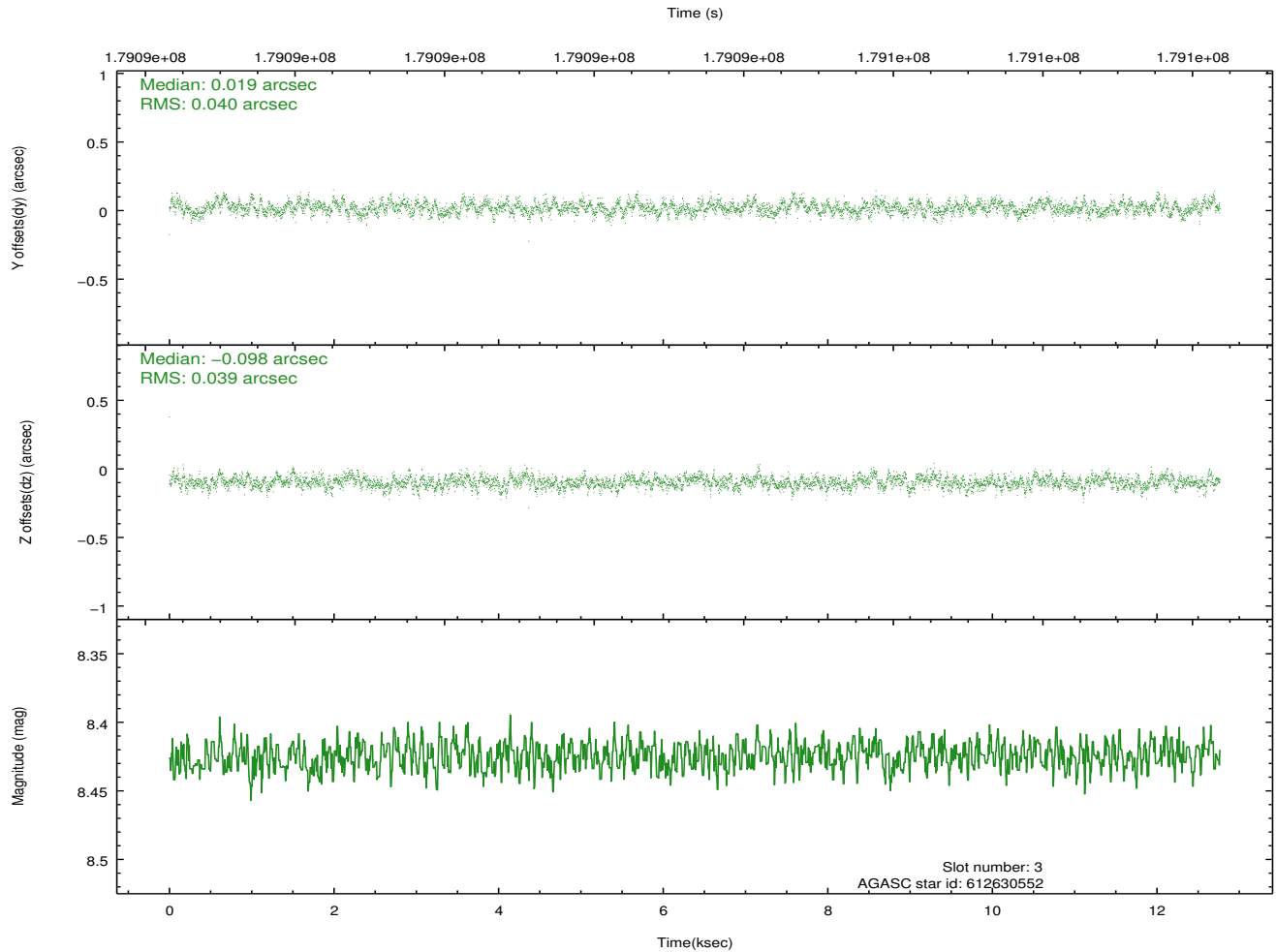
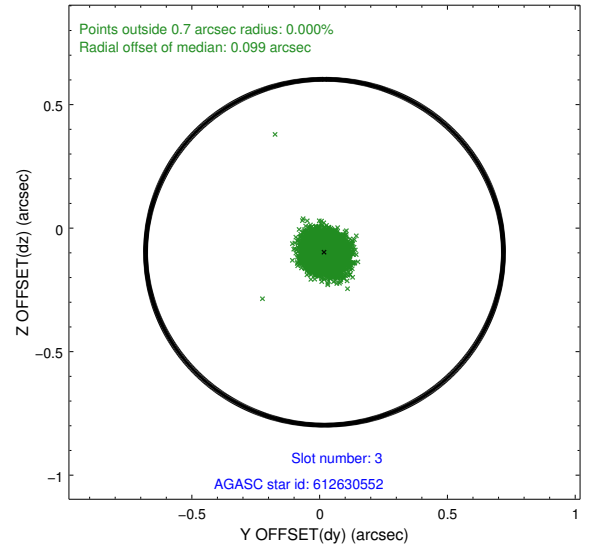
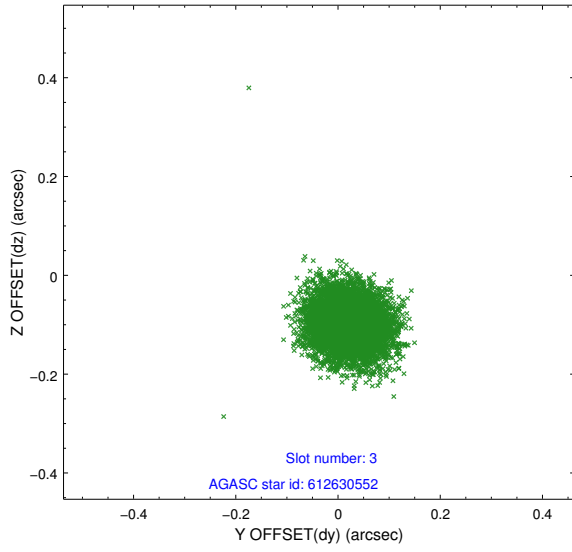


Slot Statistics

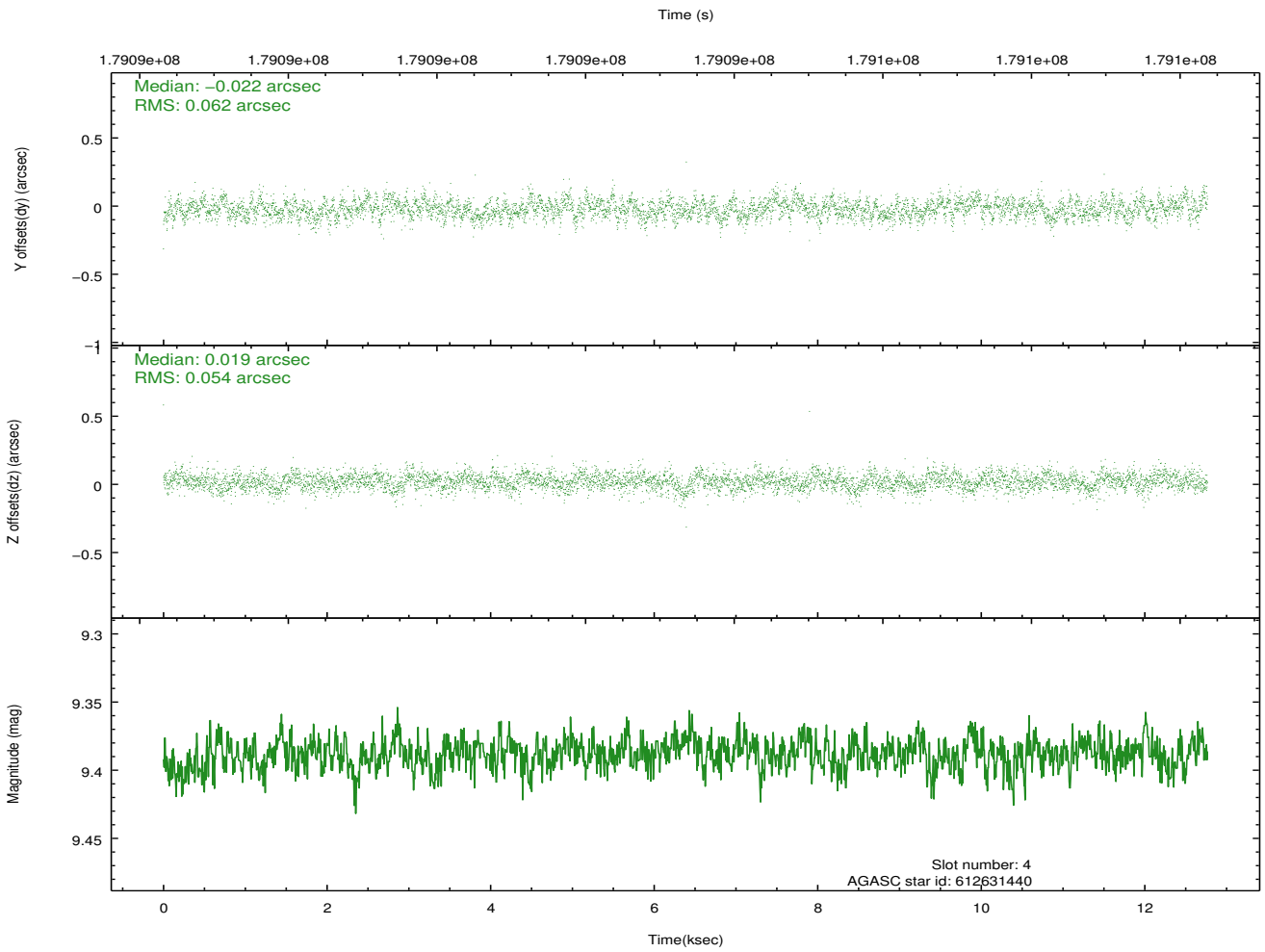
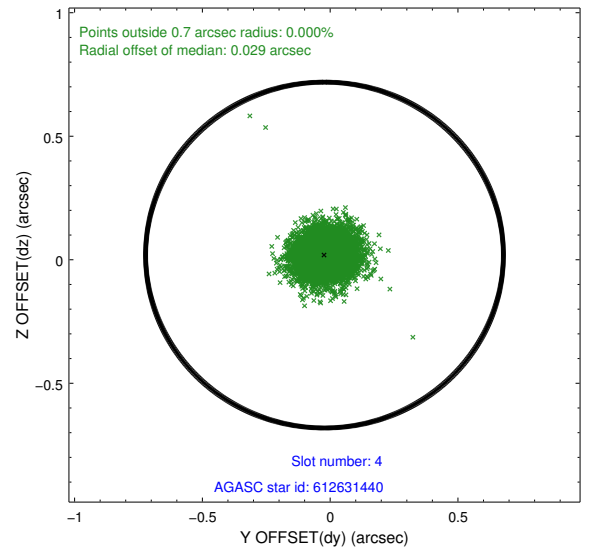
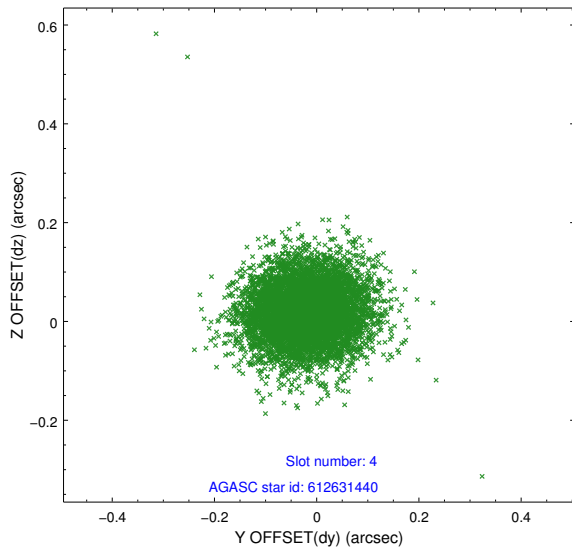
slot	status	id	mag	n_pts	med_dy	med_dz	dr1	dr2	ra	dec	mean_y	mean_z
0	FID	ACIS-I-1	7.24	3115	0.025	0.029	0.006	0.011	0.000000	0.000000	934.10	-831.49
1	FID	ACIS-I-5	7.23	3115	-0.139	0.058	0.006	0.010	0.000000	0.000000	-1813.94	1065.86
2	FID	ACIS-I-6	7.26	3115	0.023	-0.016	0.006	0.011	0.000000	0.000000	399.25	1710.70
3	GUIDE	612630552	8.42	6228	0.019	-0.098	0.059	0.096	13.806949	-1.503313	-645.73	1184.33
4	GUIDE	612631440	9.39	6218	-0.022	0.019	0.086	0.141	13.345518	-0.775803	2255.16	2281.42
5	GUIDE	612637576	8.96	6227	-0.137	0.193	0.062	0.101	14.501240	-0.747907	1511.55	-1812.81
6	GUIDE	612638048	8.81	6227	-0.062	-0.133	0.063	0.103	13.944560	-0.794877	1751.76	182.75
7	GUIDE	612639400	9.36	6225	0.201	0.021	0.079	0.134	14.334247	-1.816006	-2132.30	-444.59

2.4 Star Slots

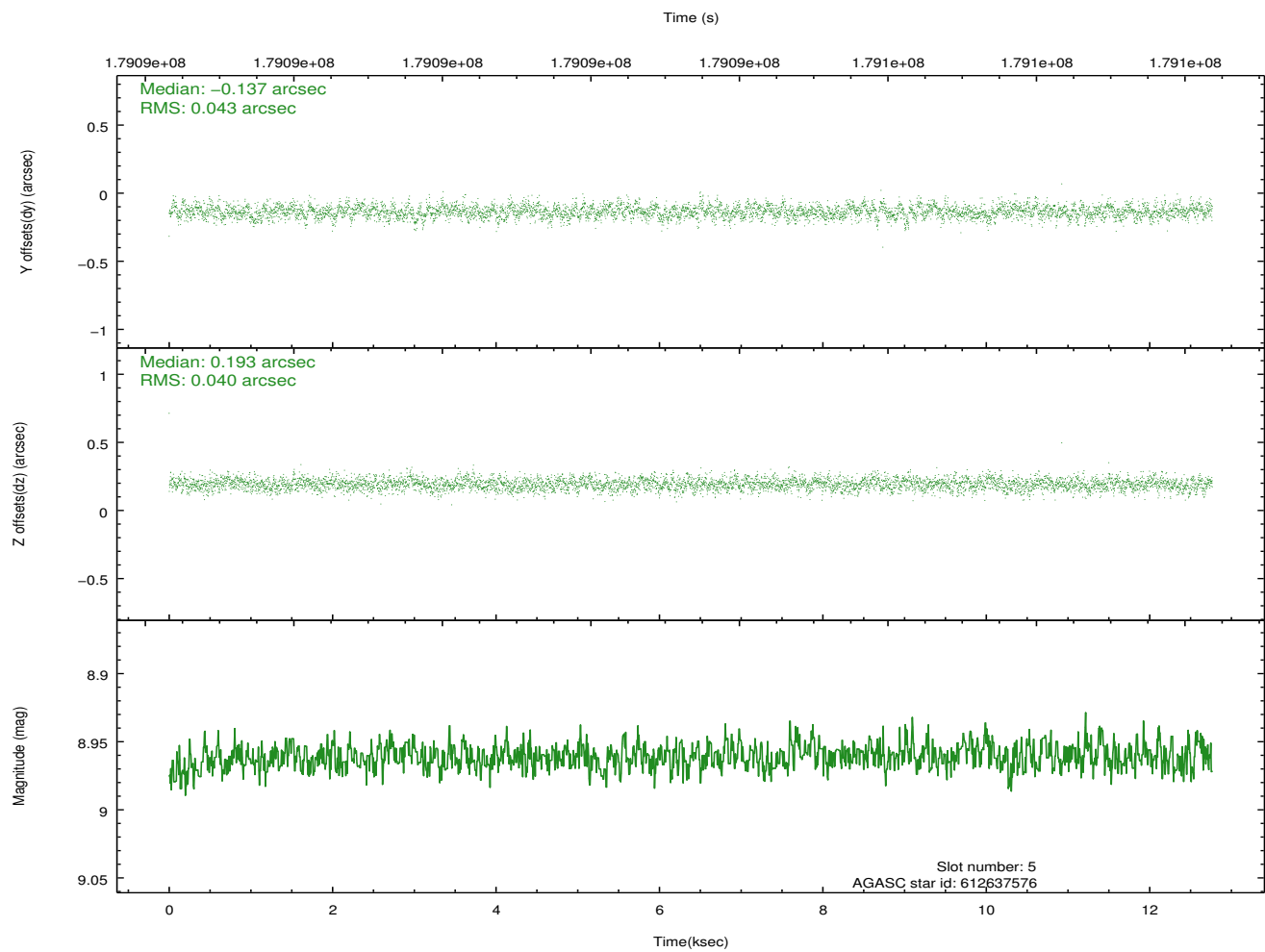
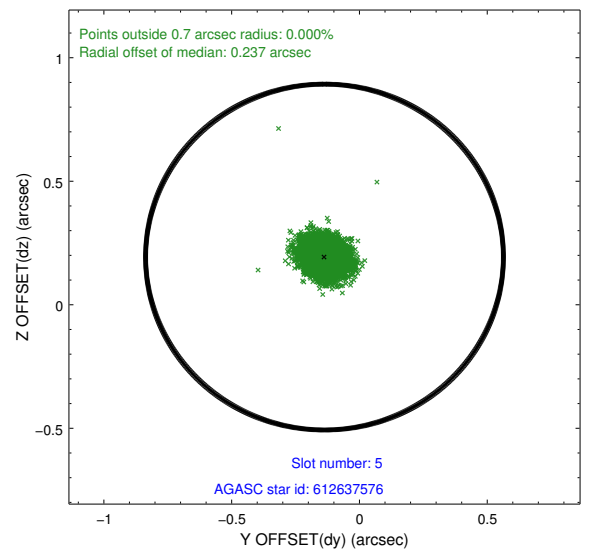
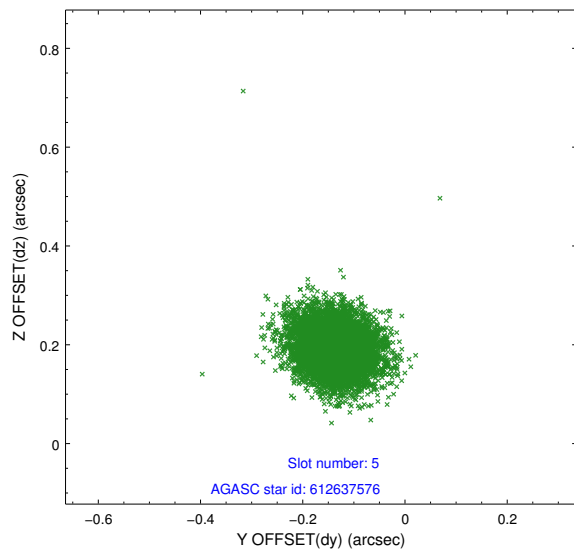
2.4.1 Slot 3



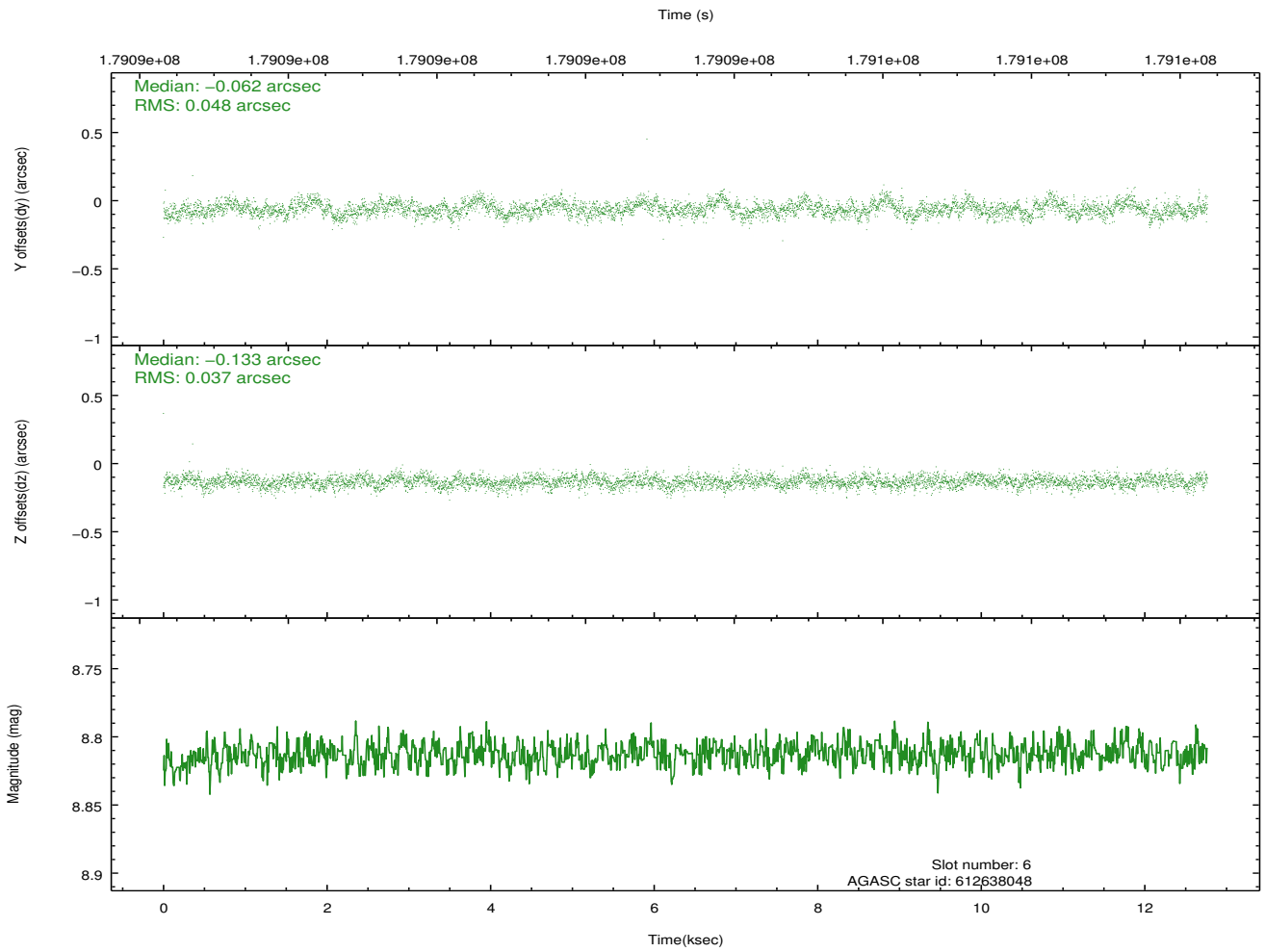
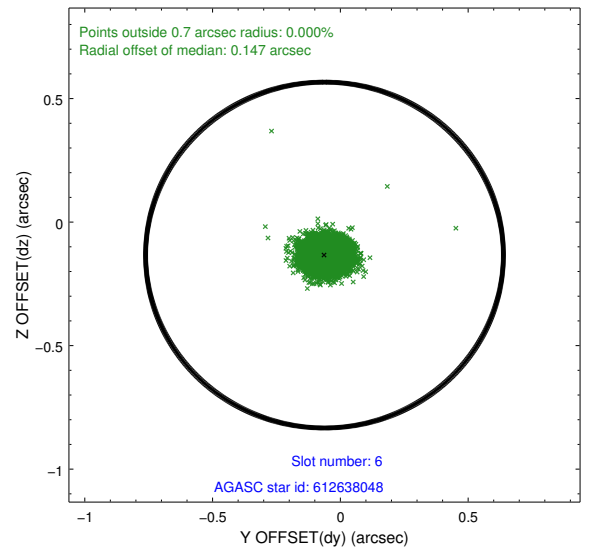
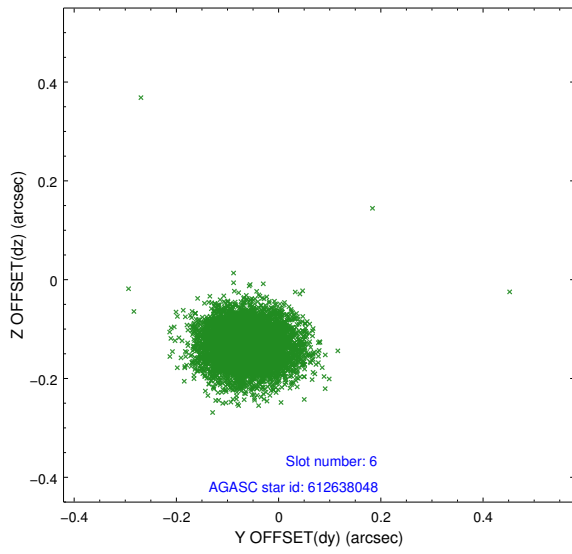
2.4.2 Slot 4



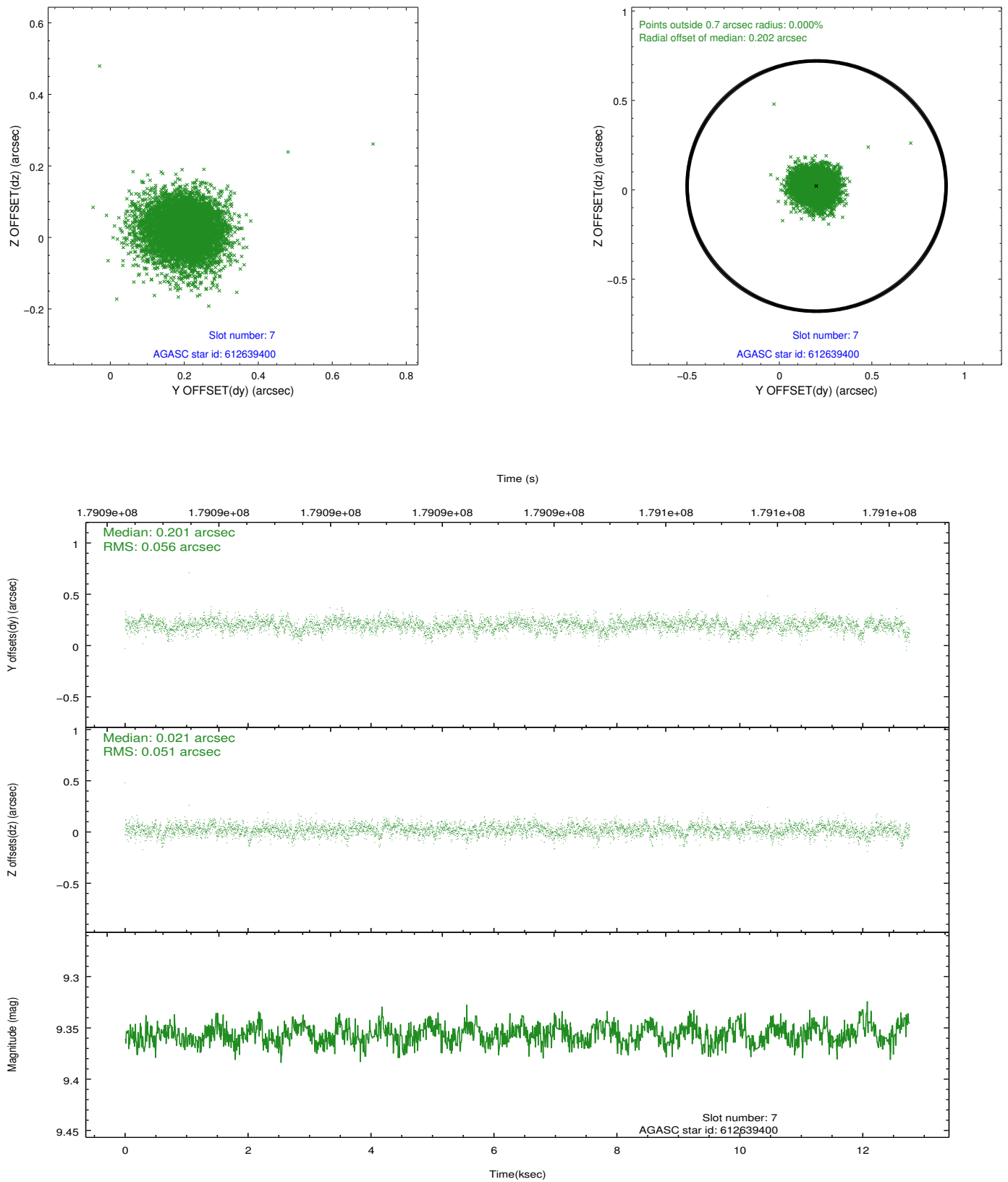
2.4.3 Slot 5



2.4.4 Slot 6

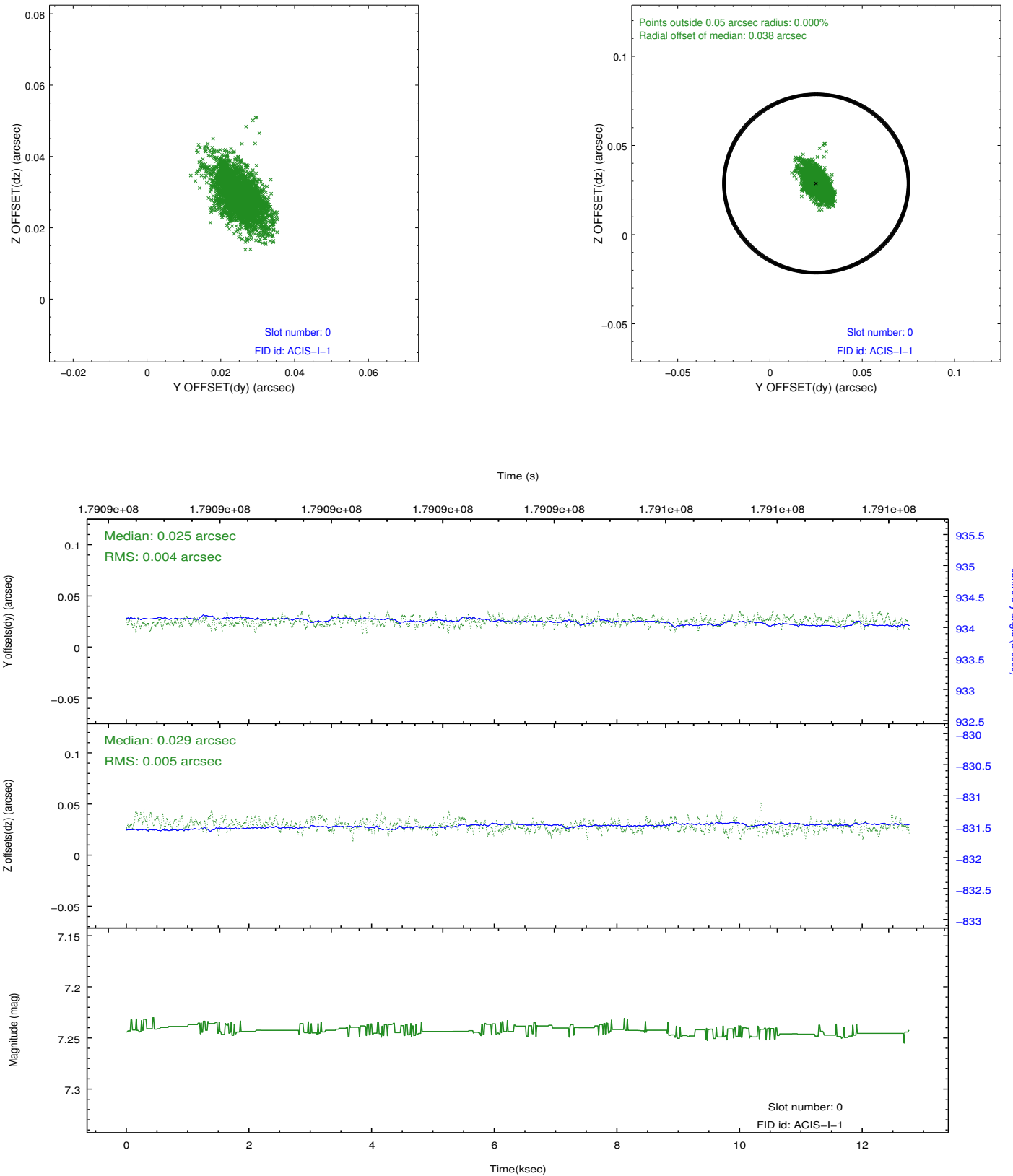


2.4.5 Slot 7

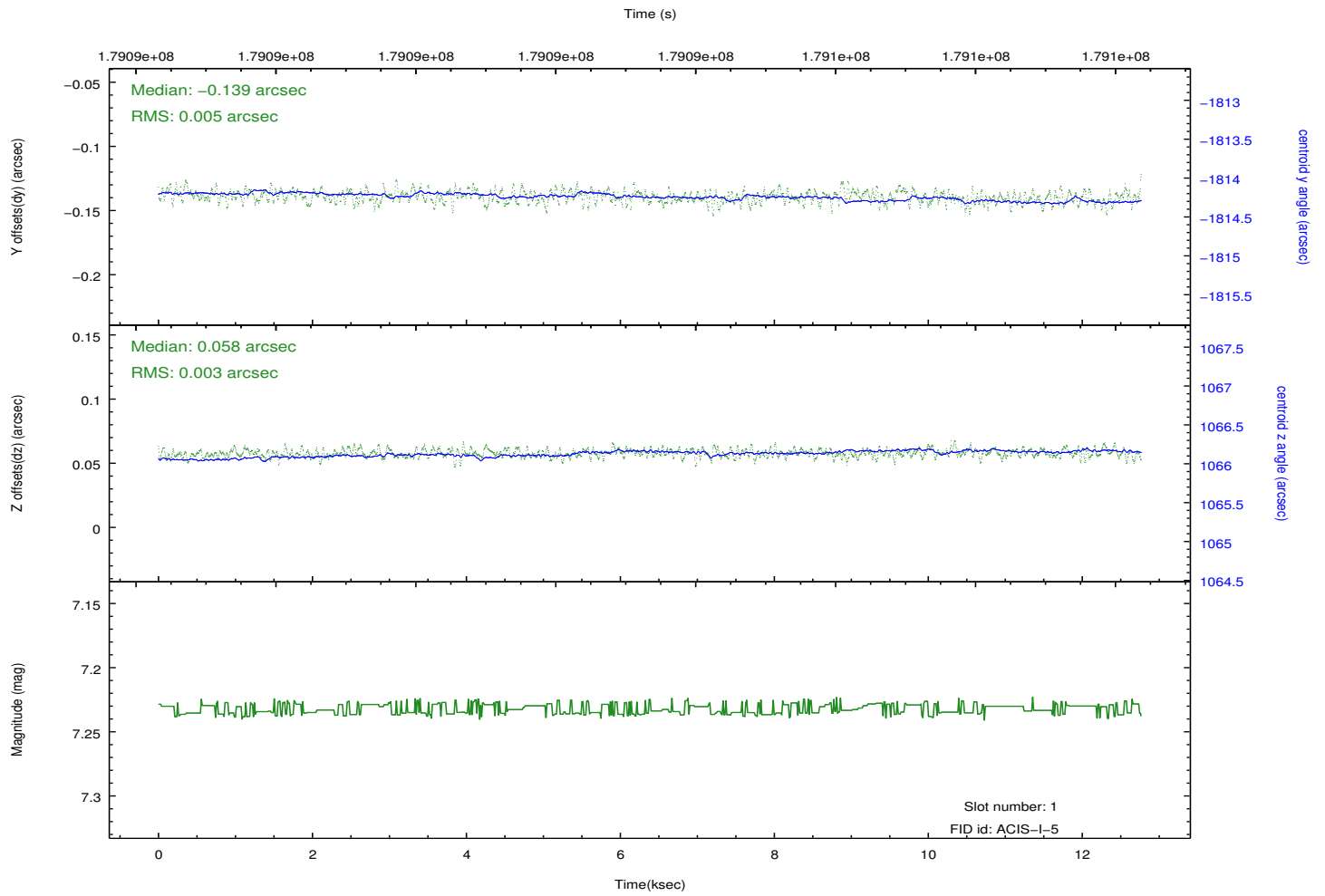
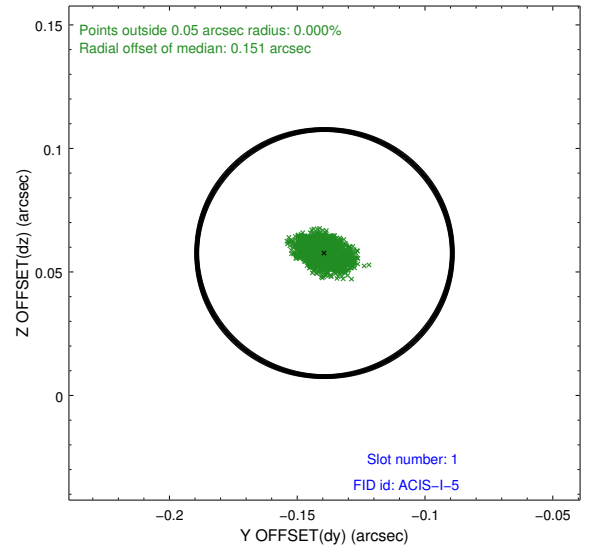
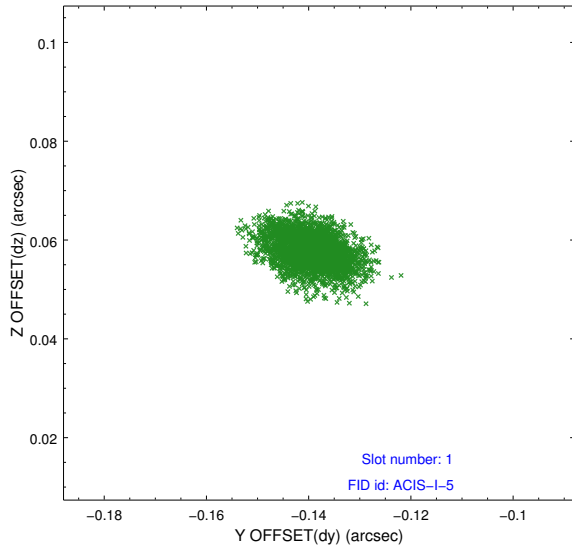


2.5 FID Slots

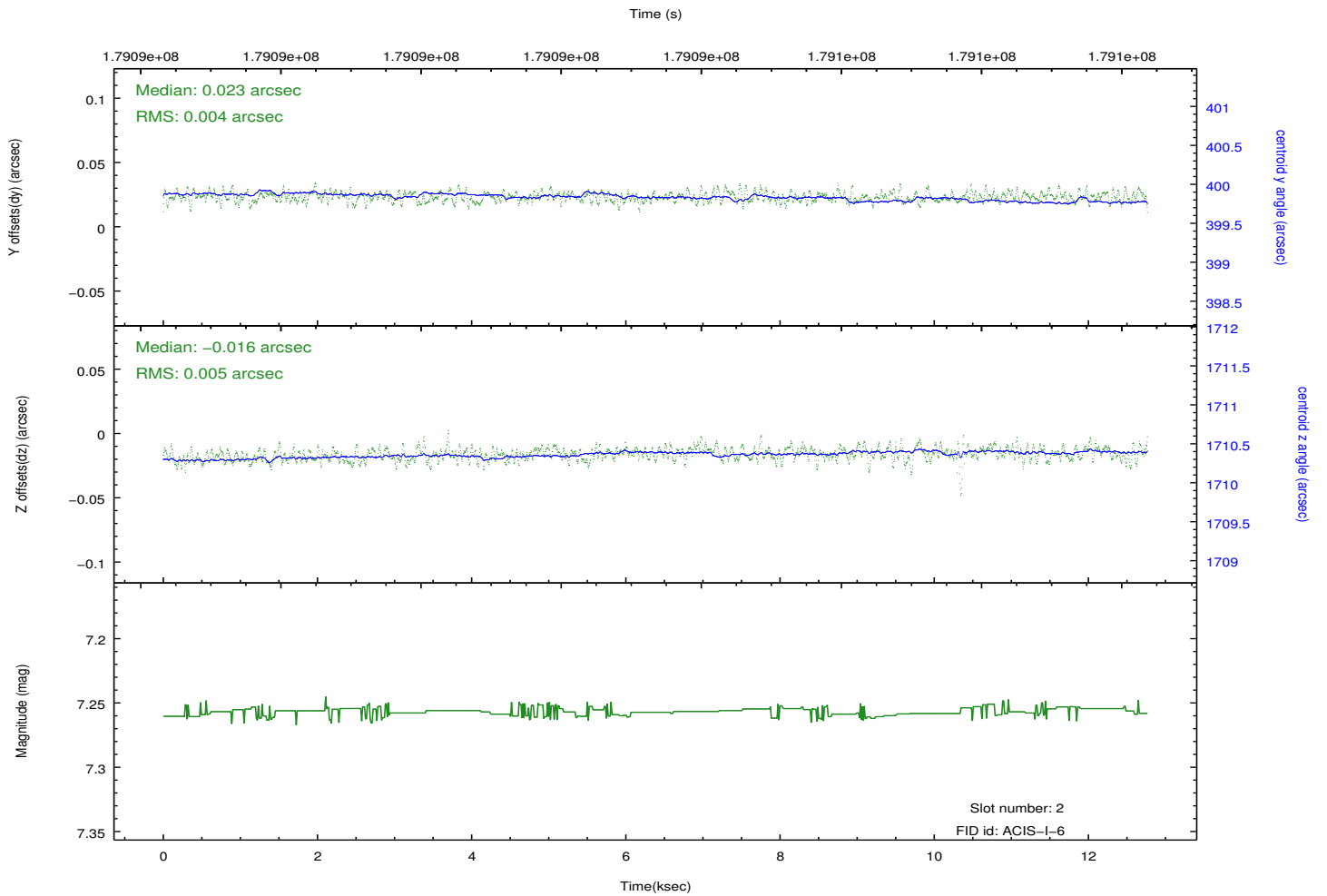
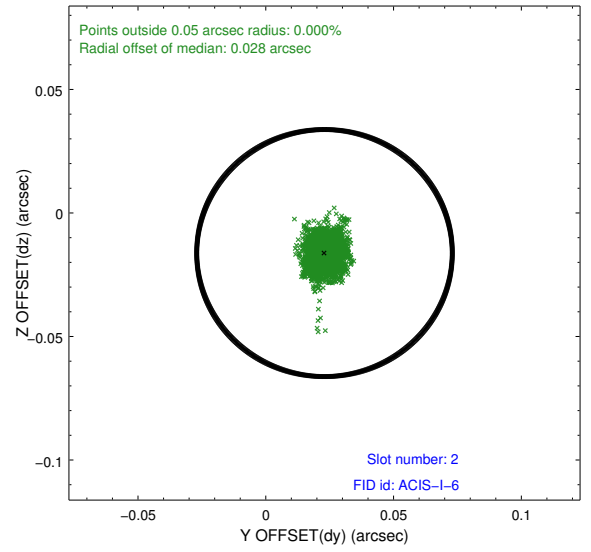
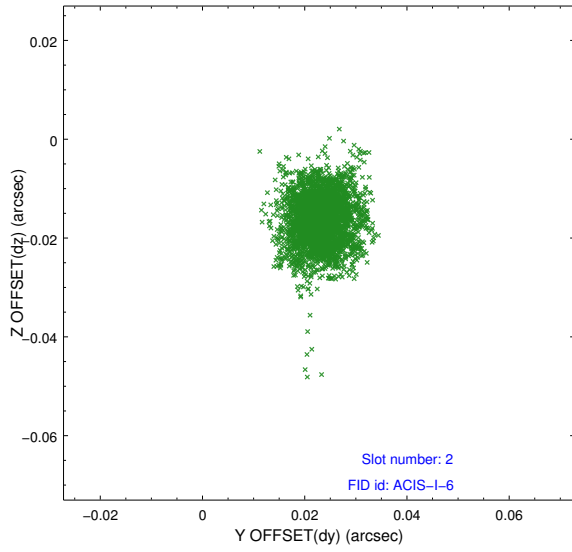
2.5.1 Slot 0



2.5.2 Slot 1



2.5.3 Slot 2



A Summary

A.1 Status

V&V Scientist	Jen Lauer
V&V Date (YYYY-MM-DD)	2012.11.29
V&V Edition	1
V&V Disposition and Status	OK
V&V Charge Time	12.089

A.2 Comments