

V&V Reference Report

L2 ASCDS Version : 8.4.5

Observation 4200 - L2 Version 4
Chandra X-Ray Center

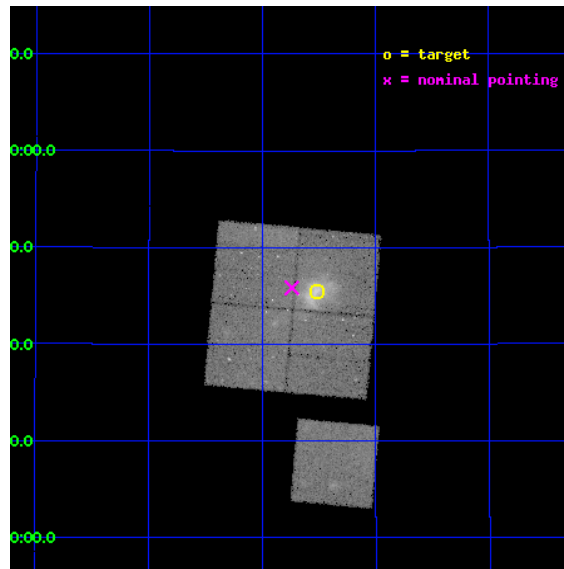
L2 Processing Date : Feb 25 2013

Contents

1	Front	2
2	OBI	3
2.1	OBI	3
2.1.1	Images	3
2.1.2	Bias	3
2.1.3	Parameters	4
2.1.4	Events	4
2.2	Compared Parameters	5
2.3	Aspect	6
2.4	Star Slots	9
2.4.1	Slot 3	9
2.4.2	Slot 4	10
2.4.3	Slot 5	11
2.4.4	Slot 6	12
2.4.5	Slot 7	13
2.5	FID Slots	14
2.5.1	Slot 0	14
2.5.2	Slot 1	15
2.5.3	Slot 2	16
A	Summary	17
A.1	Status	17
A.2	Comments	17

1 Front

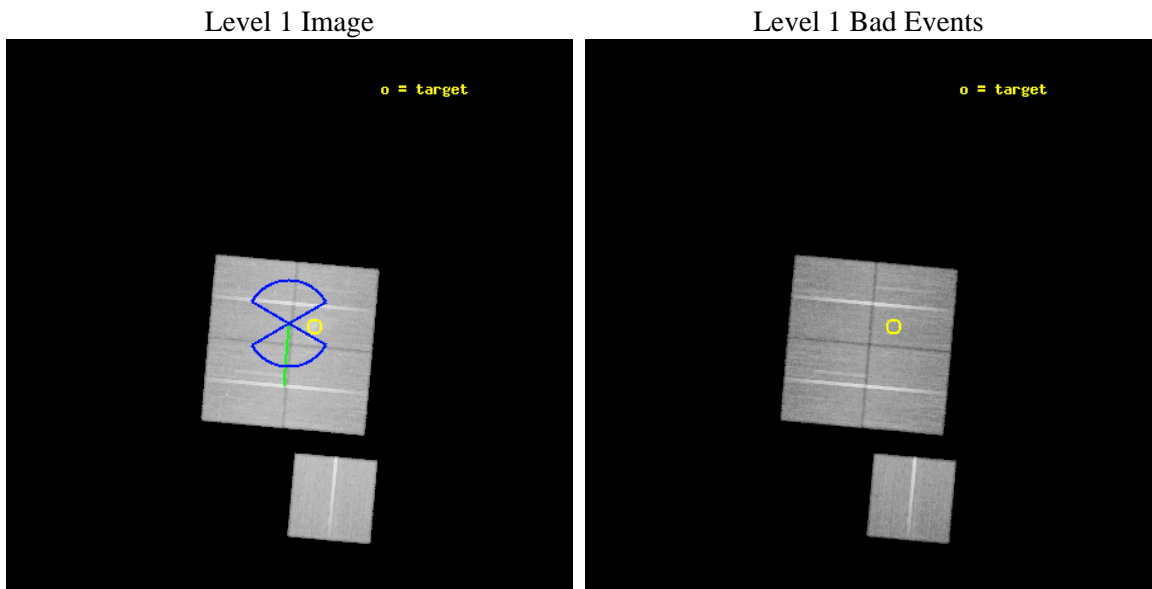
seq_num	800356	Sequence number
obs_id	4200	Observation id
title	THE ASSEMBLY OF A GIANT GALAXY CLUSTER AT Z=0.545	Proposal title
observer	Dr. Harald Ebeling	Principal investigator
object	MACSJ0717.5+3745	Source name
dtcycle	0	
cycle	P	events from which exps? Prim/Second/Both
ra_targ	109.379167	Observer's specified target RA [deg]
dec_targ	37.758333	Observer's specified target Dec [deg]
ra_nom	109.43451613567	Nominal RA [deg]
dec_nom	37.763956367002	Nominal Dec [deg]
roll_nom	185.17479770343	Nominal Roll [deg]
revision	4	Processing version of data
ontime	59824.668904483	Sum of GTIs [s]
livetime	59043.015562966	Livetime [s]
ontime0	59824.668904483	Sum of GTIs [s]
ontime1	59827.85089466	Sum of GTIs [s]
ontime2	59843.596945524	Sum of GTIs [s]
ontime3	59827.933104396	Sum of GTIs [s]
ontime6	59818.345884055	Sum of GTIs [s]
l2events	163096	Number of level 2 events



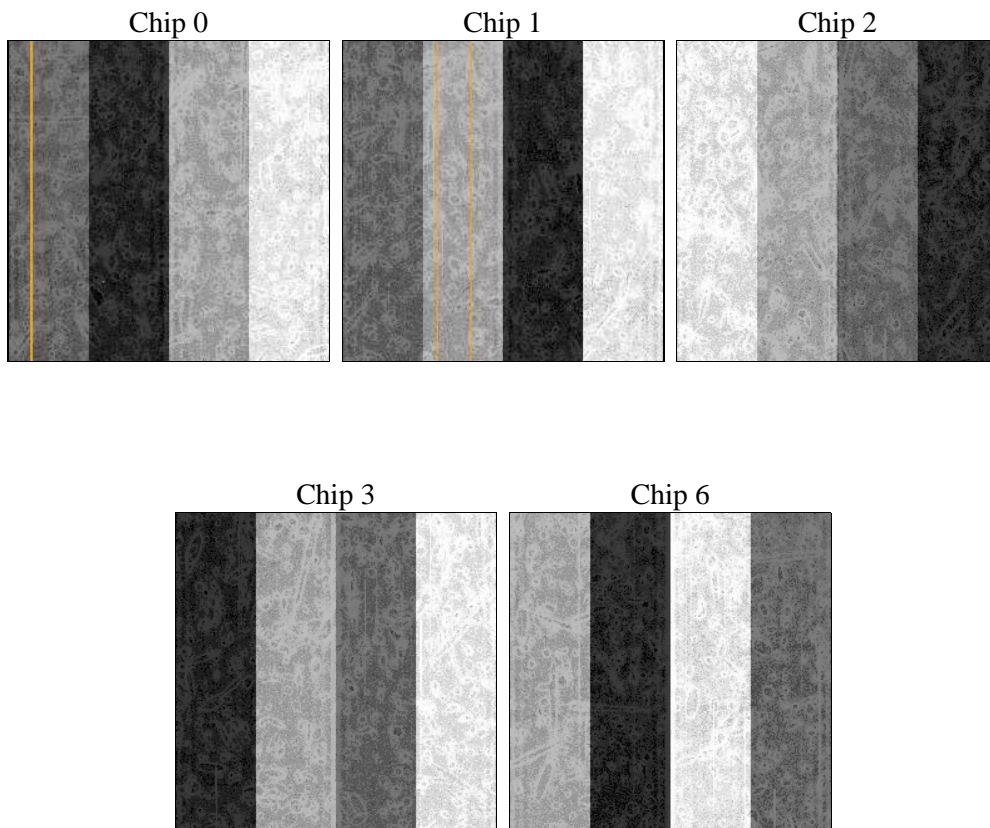
2 OBI

2.1 OBI

2.1.1 Images



2.1.2 Bias



2.1.3 Parameters

obi_num	0	Obi number	sched_exp_time	60000.000000	[s] Scheduled observation exposure time
ascdsver	8.5.1.1	Processing system revision	ontime	59824.668904483	Sum of GTIs [s]
caldsver	4.5.5	 	ontime0	59824.668904483	Sum of GTIs [s]
date	2013-02-25T20:37:01	Date and time of file creation	ontime1	59827.85089466	Sum of GTIs [s]
revision	4	Processing version of data	ontime2	59843.596945524	Sum of GTIs [s]
			ontime3	59827.933104396	Sum of GTIs [s]
			ontime6	59818.345884055	Sum of GTIs [s]
			l1events	1636097	Number of level 1 events

2.1.4 Events

	ccd 0	ccd 1	ccd 2	ccd 3	ccd 6
level 1 events	323105	306080	341944	334872	330096
rejected events	267762	268165	308790	302301	296584
rejected %	82%	87%	90%	90%	89%

	ccd 0	ccd 1	ccd 2	ccd 3	ccd 6
grade 0 events	30089	15021	13101	12710	12265
	9%	4%	3%	3%	3%
grade 1 events	241	160	170	170	138
	0%	0%	0%	0%	0%
grade 2 events	9510	7699	7195	6669	6967
	2%	2%	2%	1%	2%
grade 3 events	4796	4274	3566	3650	3715
	1%	1%	1%	1%	1%
grade 4 events	4300	4024	3608	3637	3817
	1%	1%	1%	1%	1%
grade 5 events	10736	11734	10448	12503	12434
	3%	3%	3%	3%	3%
grade 6 events	6778	6968	5745	5965	6822
	2%	2%	1%	1%	2%
grade 7 events	256655	256200	298111	289568	283938
	79%	83%	87%	86%	86%

2.2 Compared Parameters

Parameter	Planned	Actual	Parameter	Planned	Actual
Instrument	ACIS	ACIS	Obspar format		
Detector	ACIS-01236	ACIS-01236	version number	7	7
Grating	NONE	NONE	Obspar file type	PREDICTED	ACTUAL
Data mode	VFAINT	VFAINT	Obspar update status	NONE	UPDATED
Observation mode	POINTING	POINTING	Number of optional ACIS chips dropped	0	0
[deg] Pointing RA	109.462727	109.4345161356712	On-chip summing requested	N	N
[deg] Pointing Dec	37.779805	37.76395636700241	Subarray requested	NONE	NONE
[deg] Pointing Roll	184.948827	185.174797703435	Alternating exposures requested	N	N
[deg] Roll angle	180.000000	180.000000	[s] Primary exposure time	0.000000	3.1
[deg] Roll tolerance	60.000000	60.000000			
Roll constraint allows 180D rotation	Y	Y			
[mm] SIM focus pos	-0.782348	-0.7809083437167272			
[mm] SIM defocus	0	0.001439871863259334			
[mm] SIM translation stage pos	-241.792463	-241.7941596051205			
[mm] SIM translation stage offset	8.199999999999999	8.201706602190853			
[s] Observation start time (MET)	158377789.184000	158376724.63029			
Observation start date	2003-01-08T01:48:45	2003-01-08T01:32:04			
[s] Observation end time (MET)	158437789.184000	158438415.79537			
Observation end date	2003-01-08T18:28:45	2003-01-08T18:40:15			
Read mode	TIMED	TIMED			

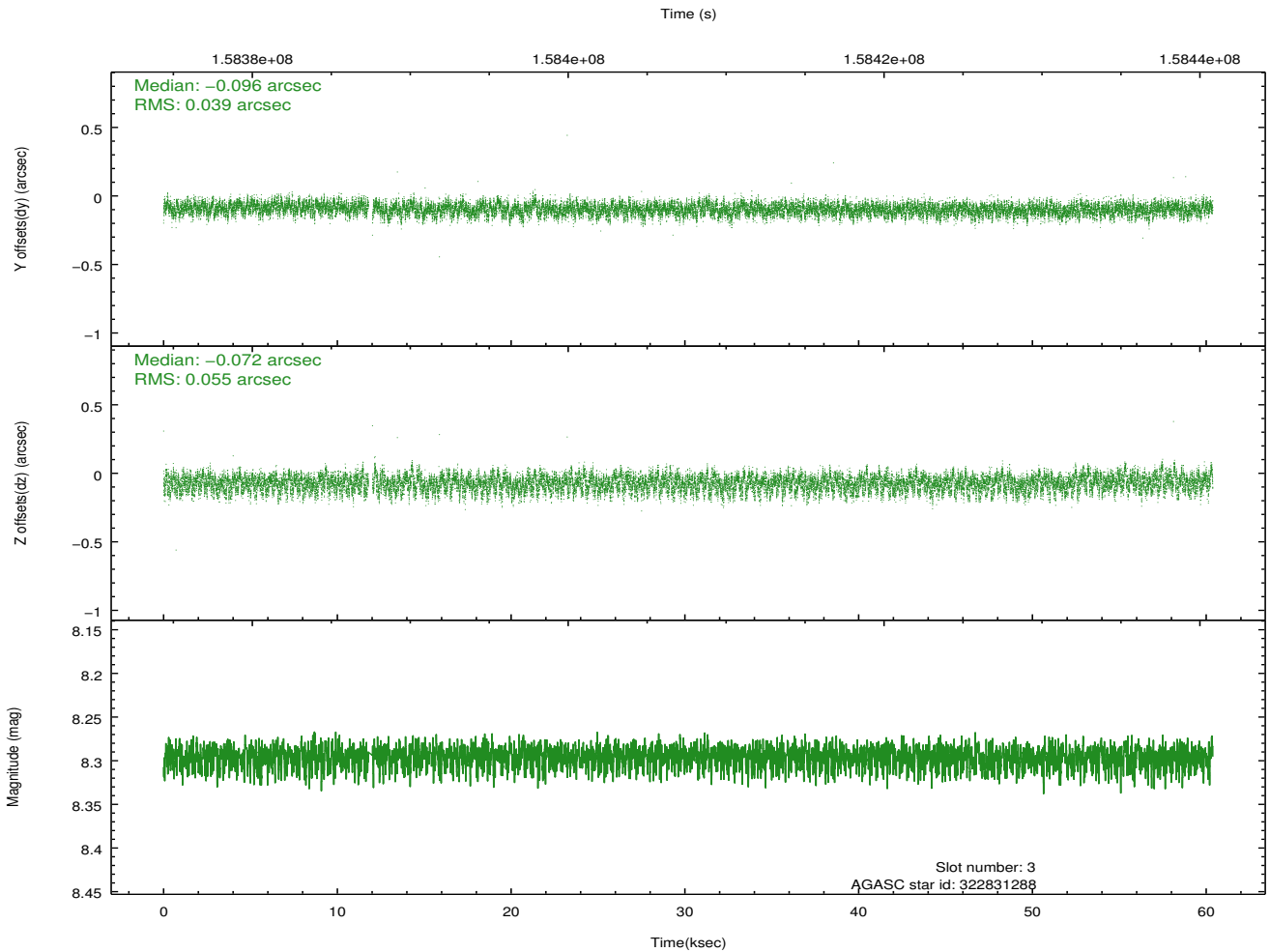
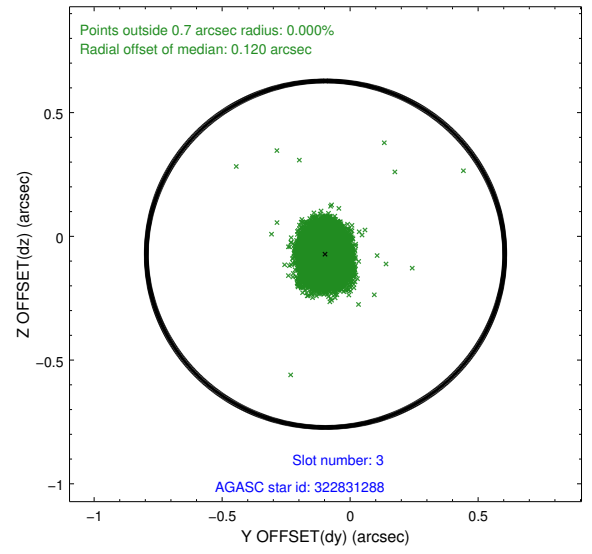
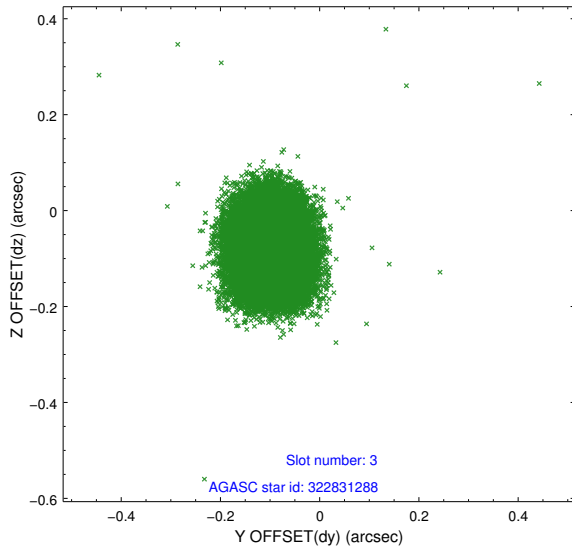
2.3 Aspect

Slot Statistics

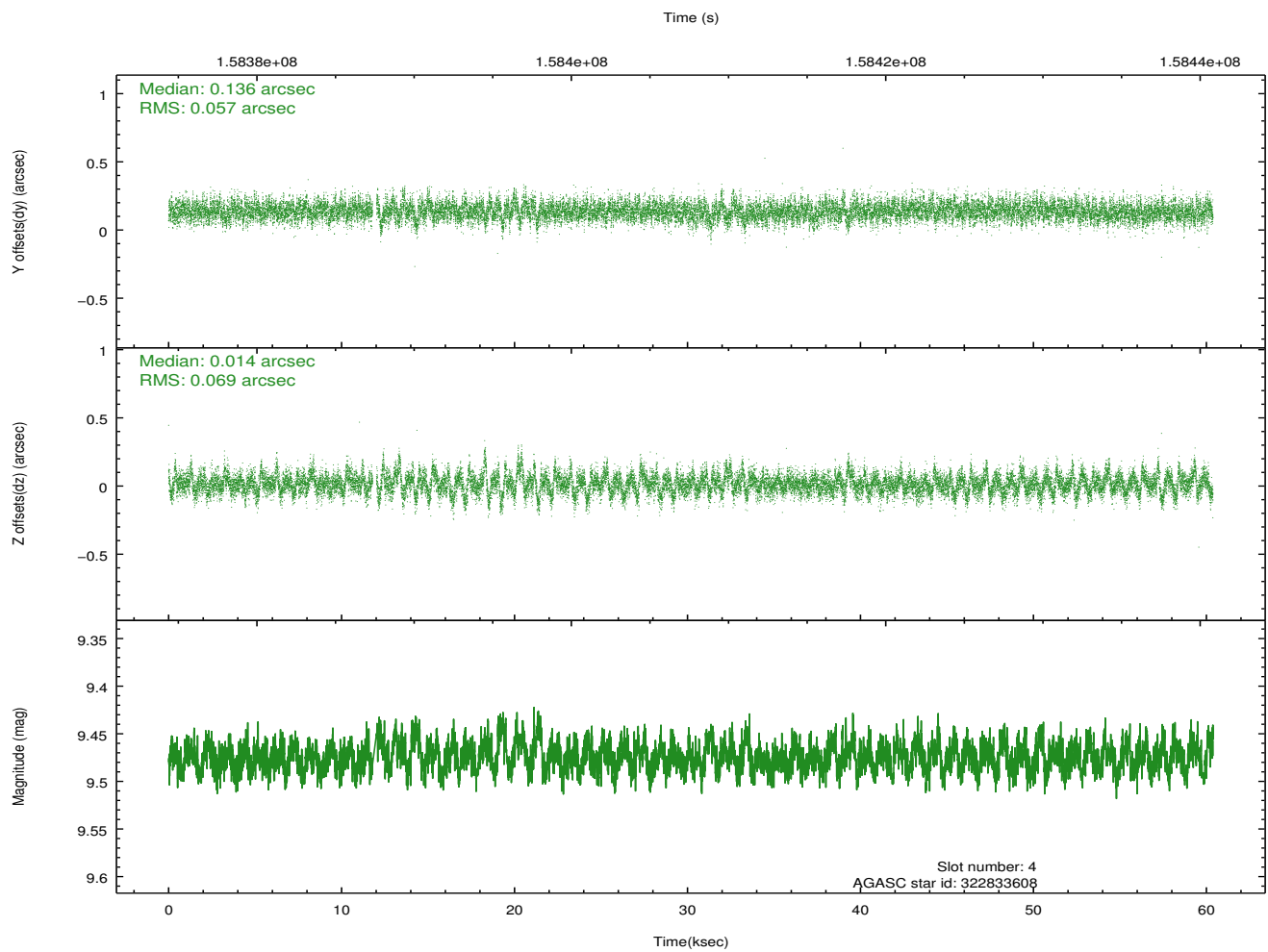
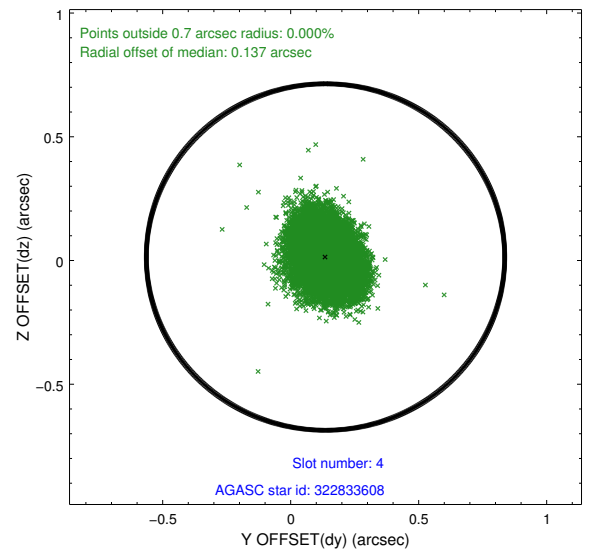
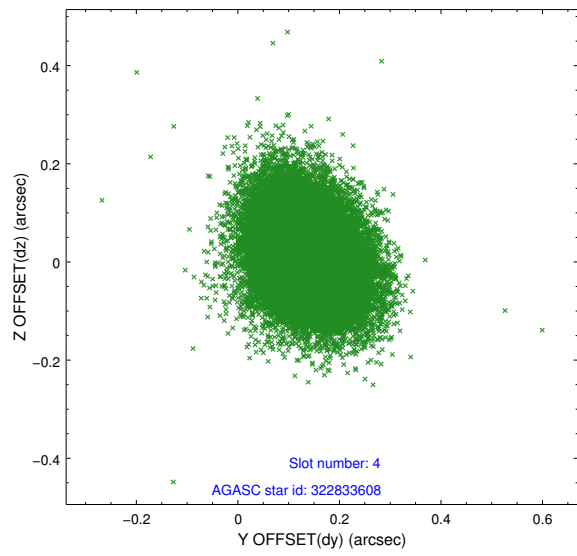
slot	status	id	mag	n_pts	med_dy	med_dz	dr1	dr2	ra	dec	mean_y	mean_z
0	FID	ACIS-I-1	7.29	14639	-0.032	0.052	0.013	0.021	0.000000	0.000000	936.81	-661.39
1	FID	ACIS-I-5	7.24	14605	-0.061	0.021	0.013	0.021	0.000000	0.000000	-1811.35	1236.09
2	FID	ACIS-I-6	7.24	14622	-0.000	-0.002	0.014	0.028	0.000000	0.000000	402.43	1880.52
3	GUIDE	322831288	8.30	29263	-0.096	-0.072	0.071	0.115	109.203187	37.248139	905.78	1841.94
4	GUIDE	322833608	9.47	29286	0.136	0.014	0.094	0.158	109.901423	37.457902	-1149.14	1259.68
5	GUIDE	385879840	7.83	29280	-0.022	-0.029	0.059	0.096	109.502710	38.364188	-293.26	-2086.14
6	GUIDE	322831016	9.66	29041	-0.015	0.020	0.120	0.199	109.551352	37.195307	-71.96	2118.15
7	GUIDE	385879504	9.57	29232	-0.005	0.062	0.083	0.138	108.887817	38.157725	1504.20	-1500.24

2.4 Star Slots

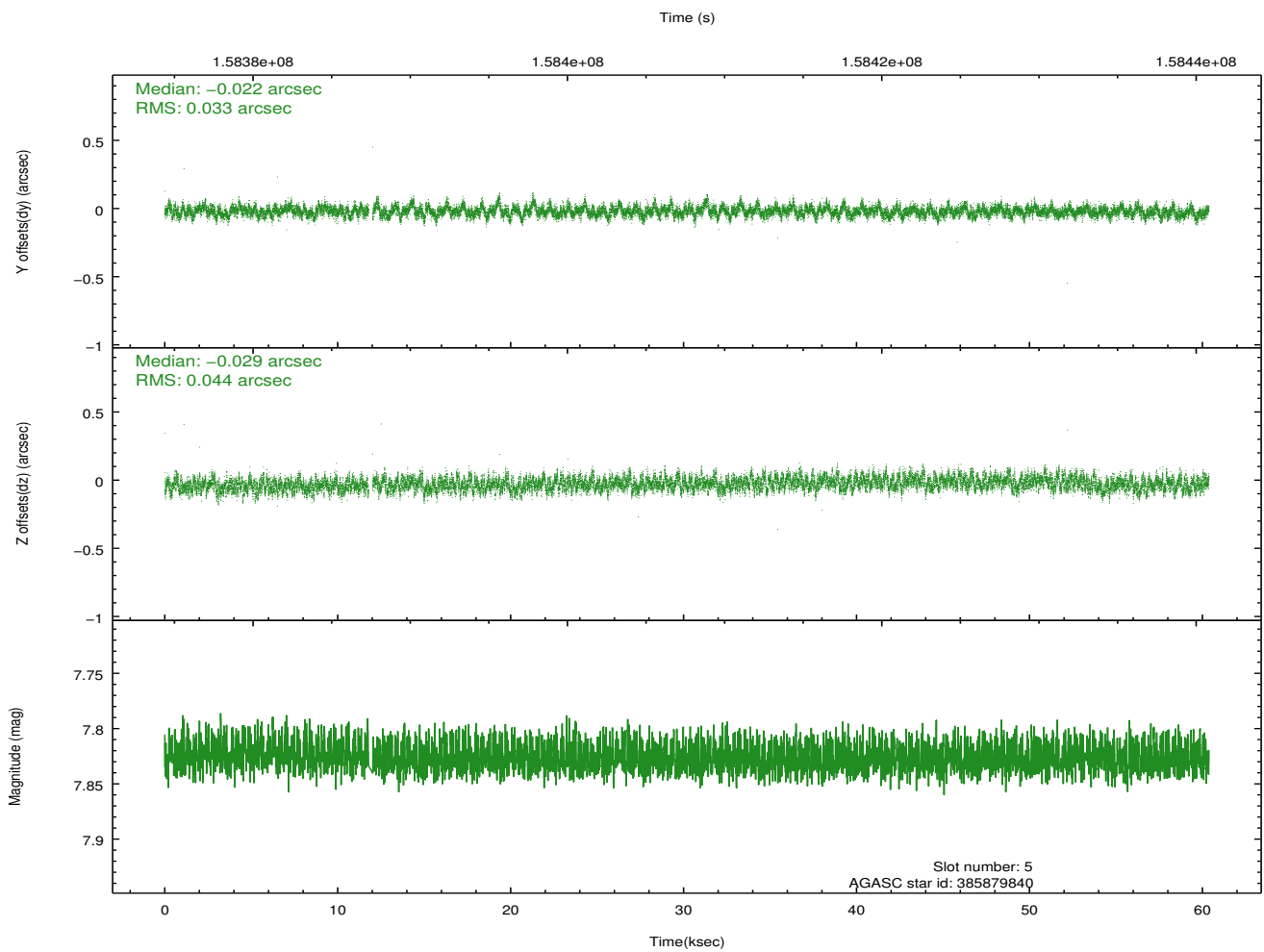
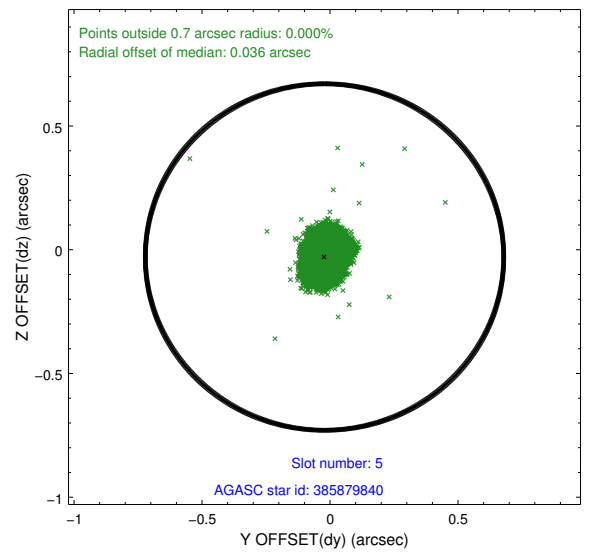
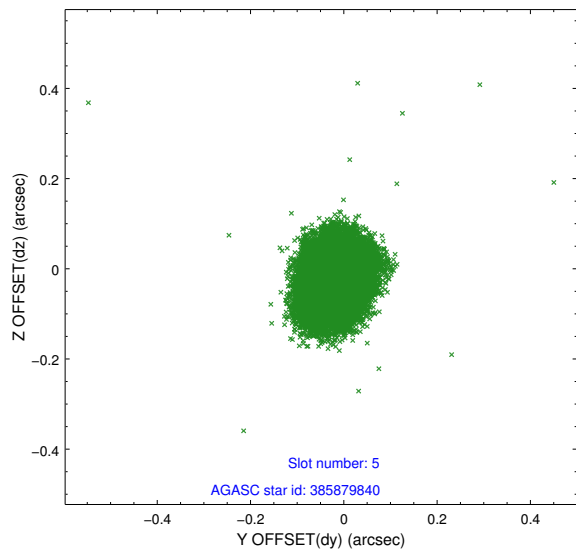
2.4.1 Slot 3



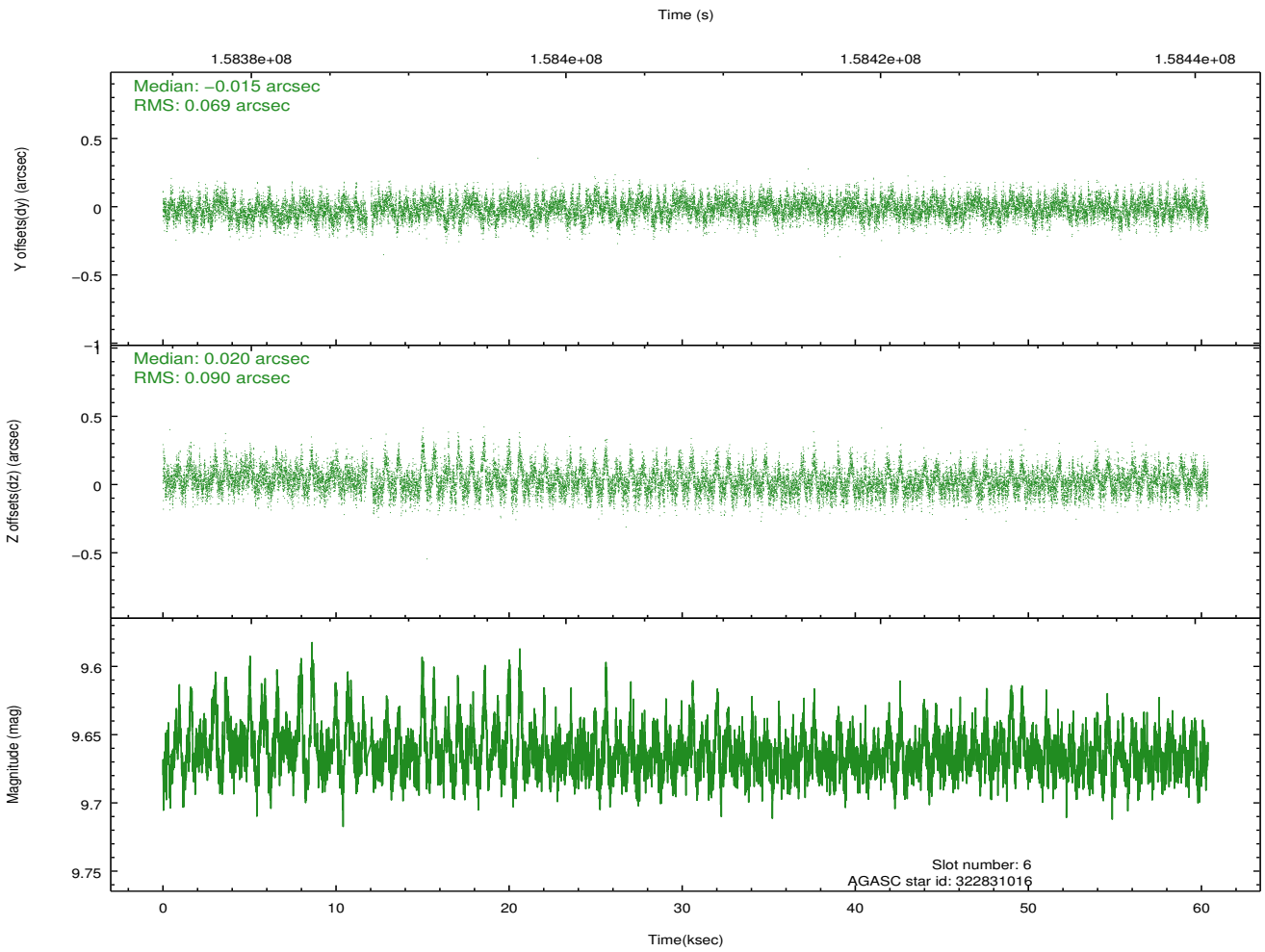
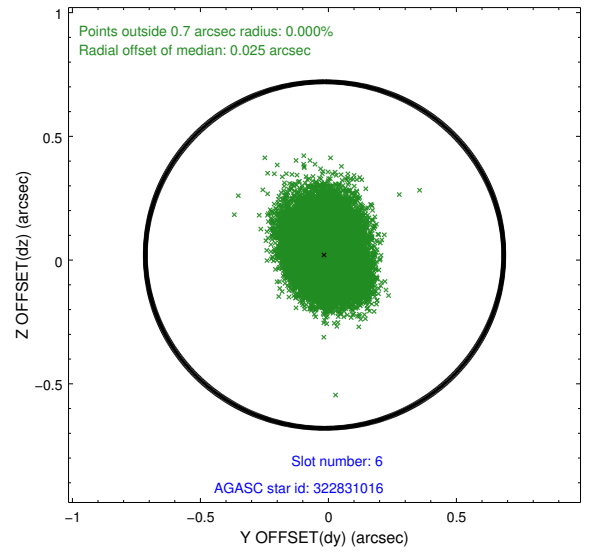
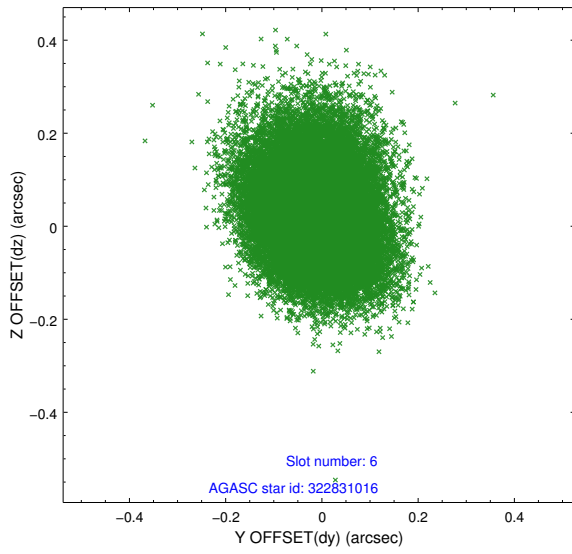
2.4.2 Slot 4



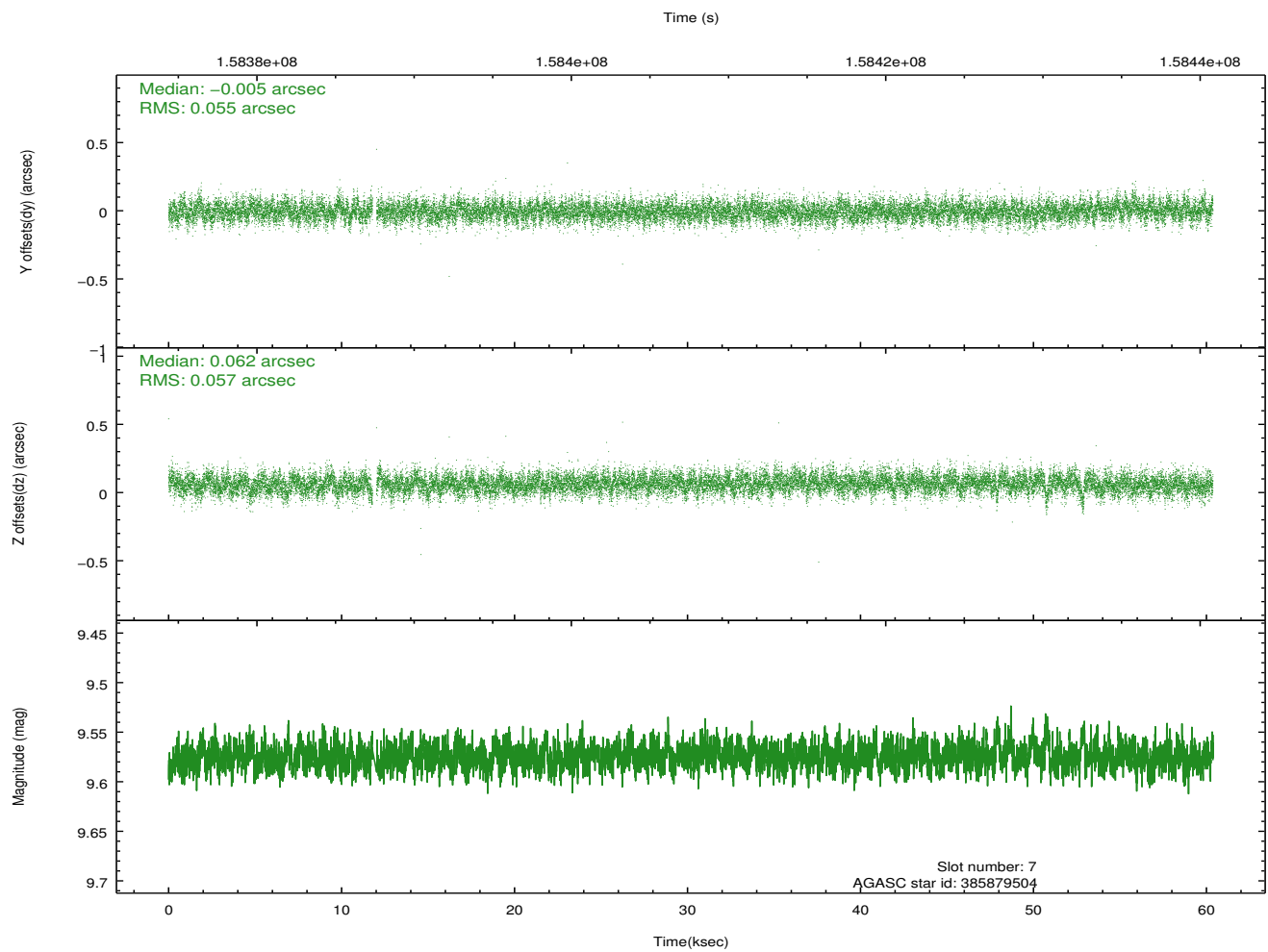
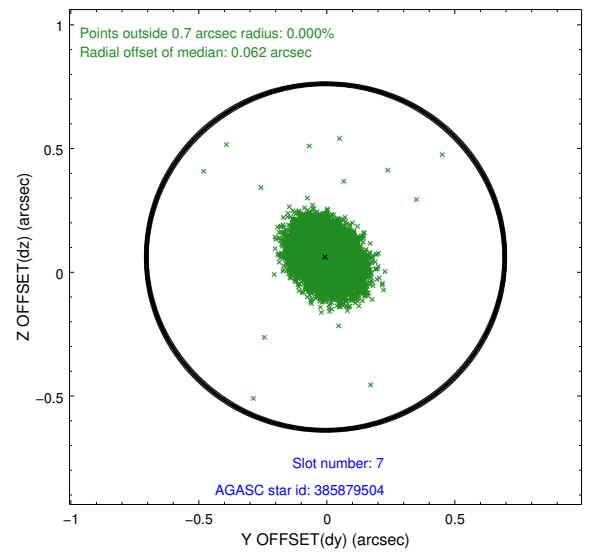
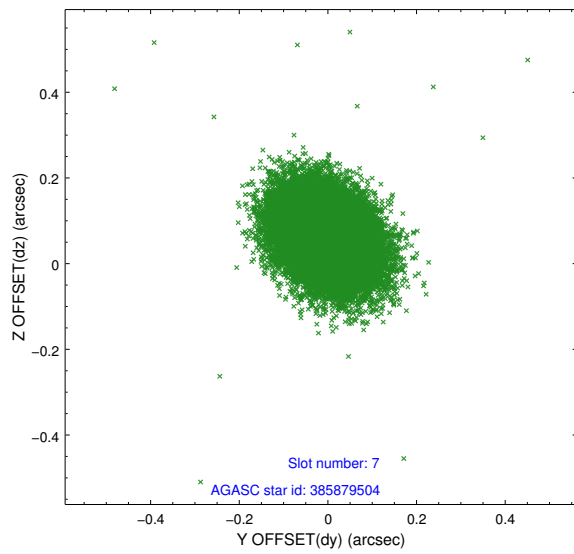
2.4.3 Slot 5



2.4.4 Slot 6

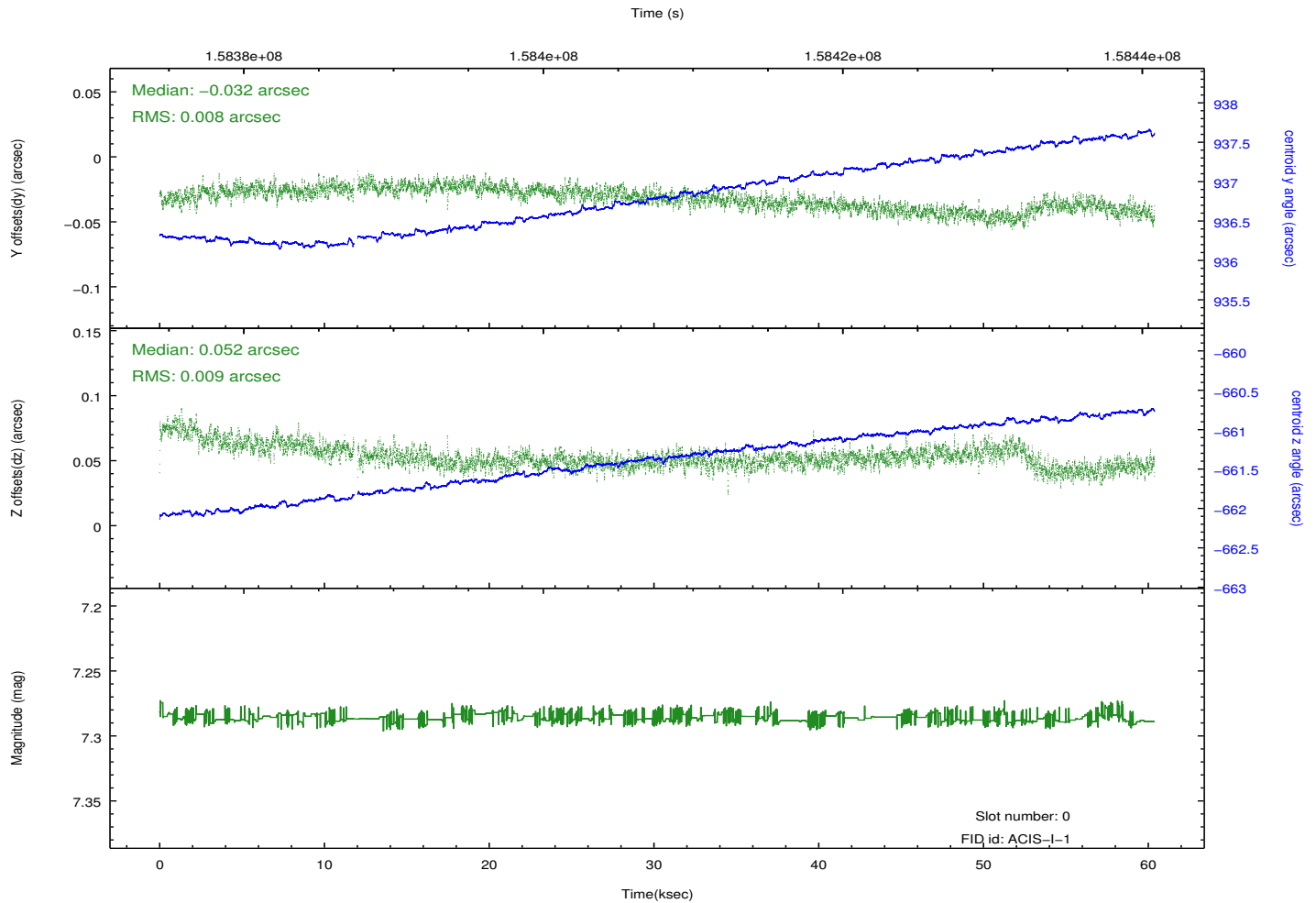
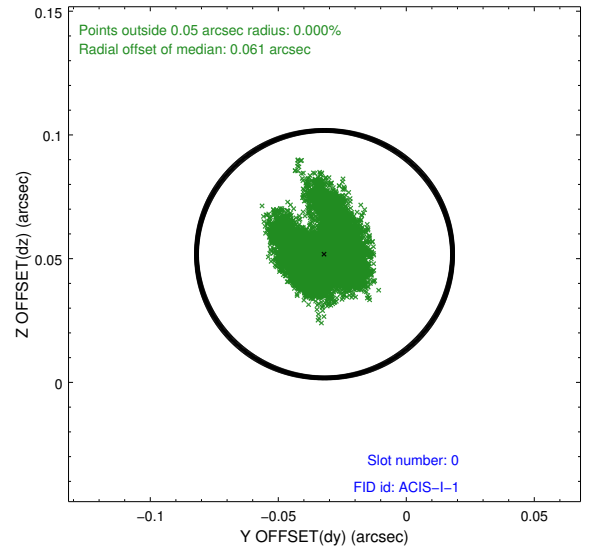
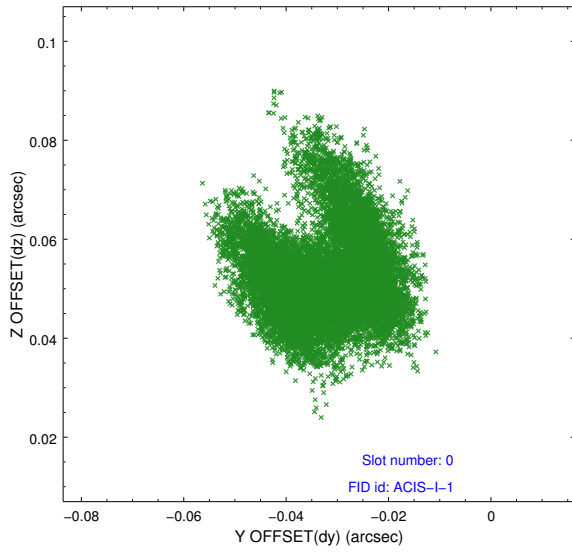


2.4.5 Slot 7

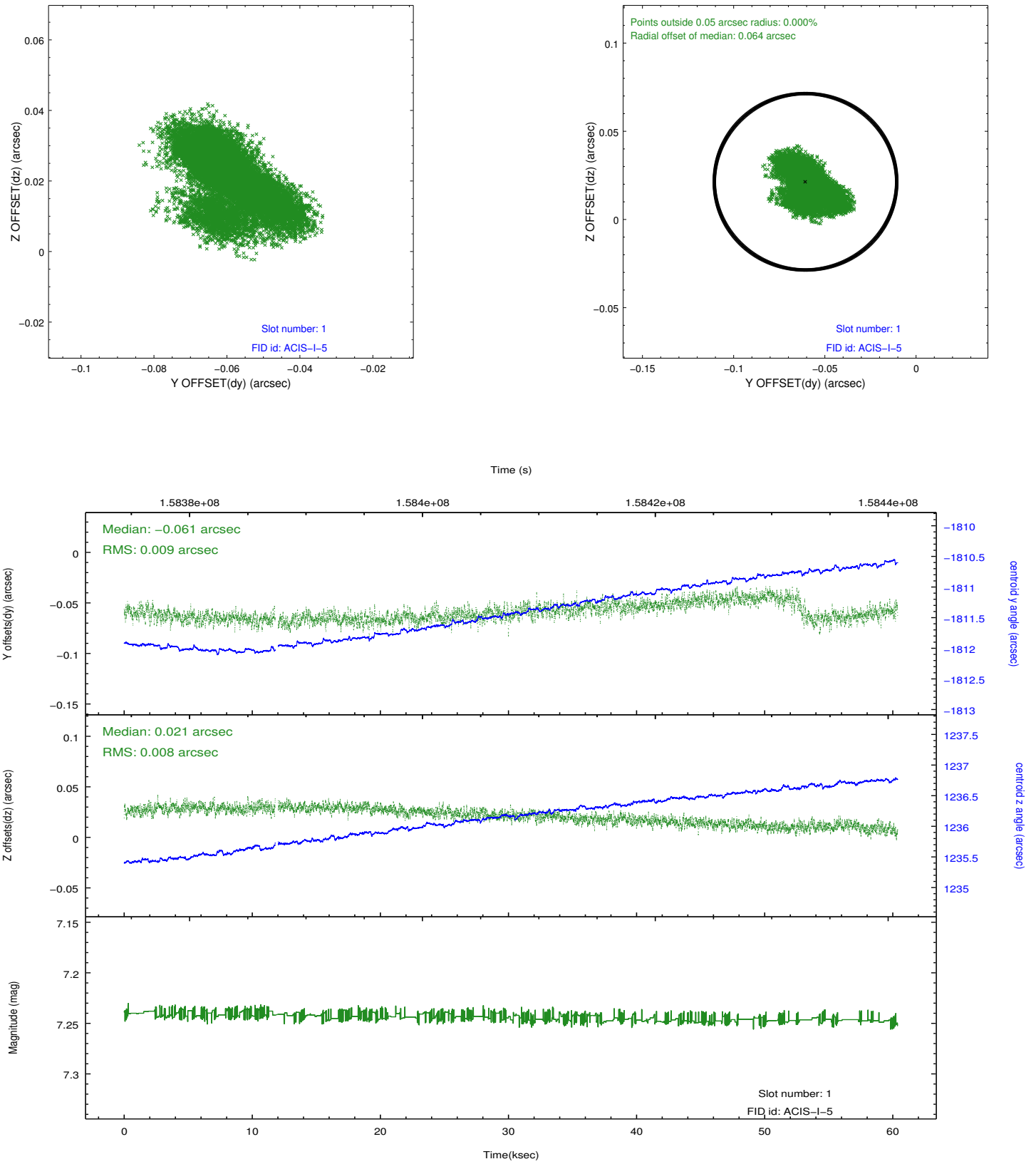


2.5 FID Slots

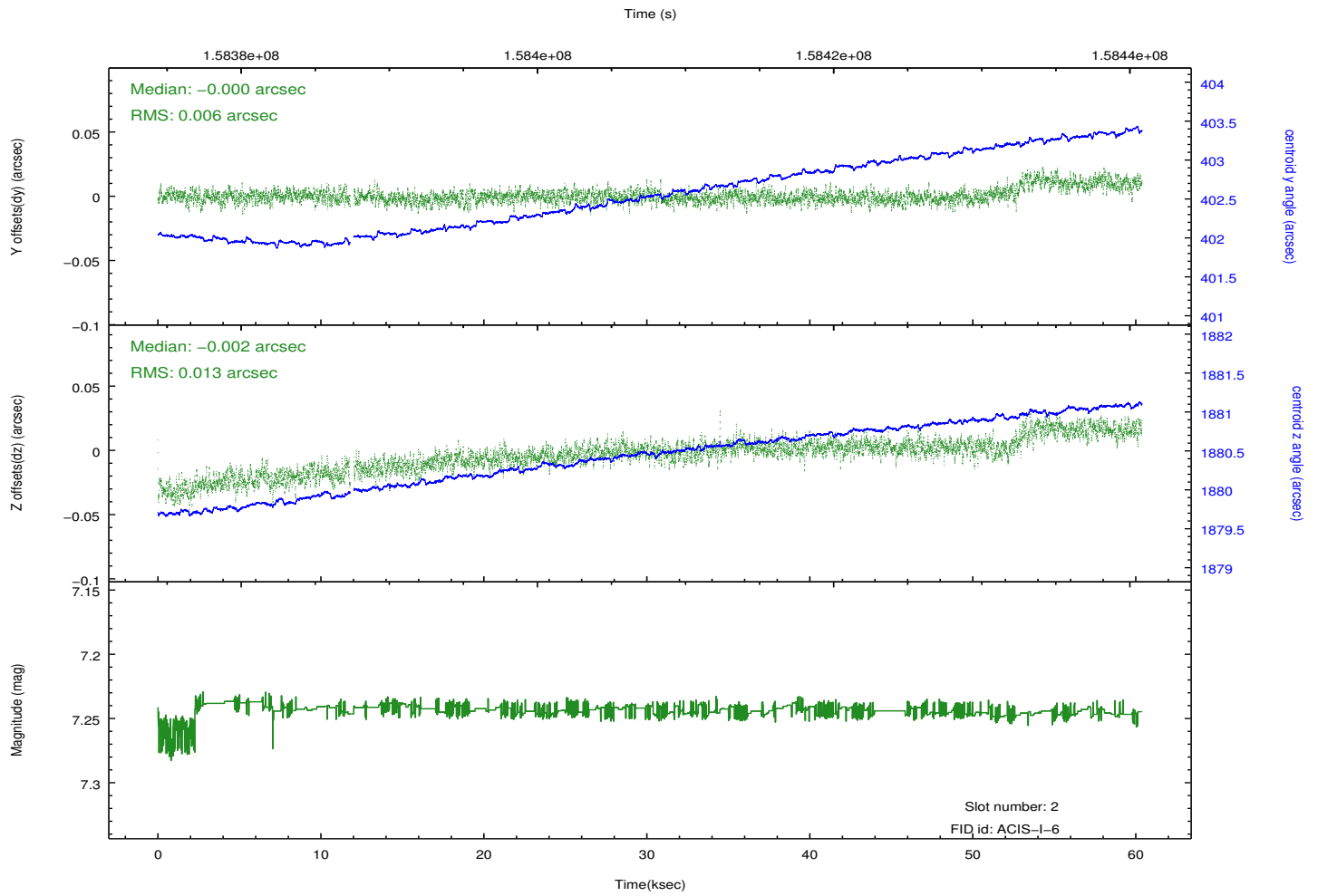
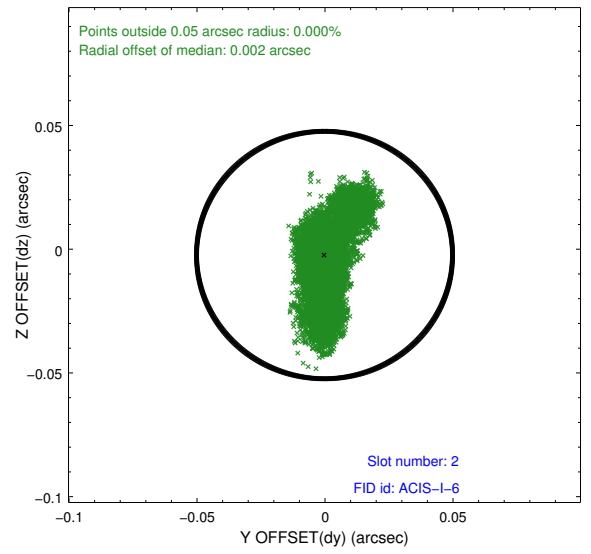
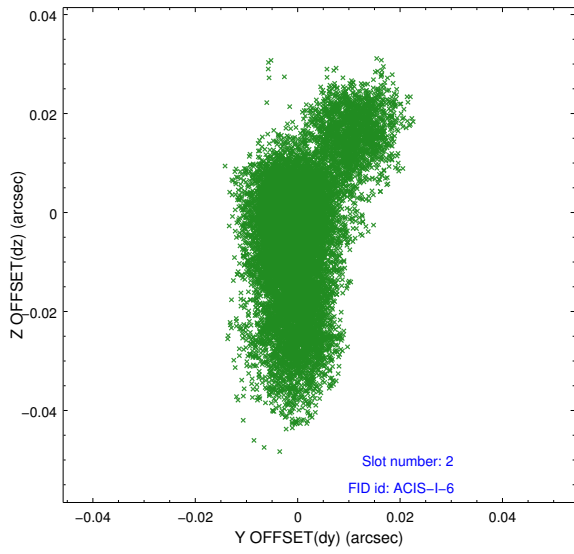
2.5.1 Slot 0



2.5.2 Slot 1



2.5.3 Slot 2



A Summary

A.1 Status

V&V Scientist	Jen Lauer
V&V Date (YYYY-MM-DD)	2013.02.26
V&V Edition	1
V&V Disposition and Status	OK
V&V Charge Time	59.928

A.2 Comments

Charge time for this ObsId remains at previous value of 59.928 ks although with the current processing the charge time would have been 59.82 ksec.

=====

Roll constraint met.