

V&V Reference Report

L2 ASCDS Version : 8.4.5

Observation 4390 - L2 Version 3
Chandra X-Ray Center

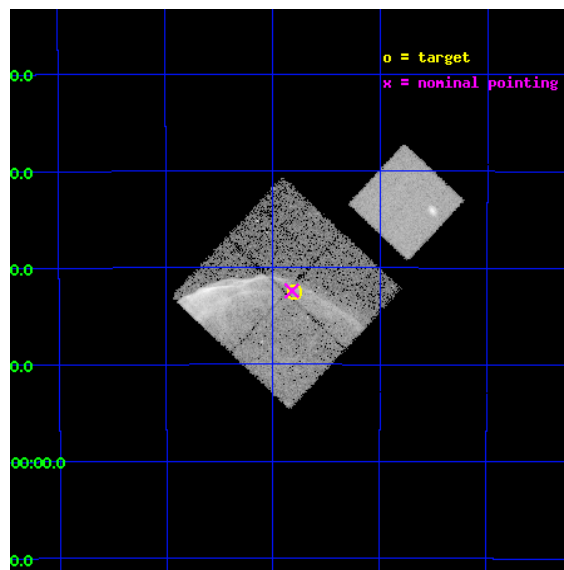
L2 Processing Date : Oct 26 2012

Contents

1	Front	2
2	OBI	3
2.1	OBI	3
2.1.1	Images	3
2.1.2	Bias	3
2.1.3	Parameters	4
2.1.4	Events	4
2.2	Compared Parameters	5
2.3	Aspect	6
2.4	Star Slots	9
2.4.1	Slot 3	9
2.4.2	Slot 4	10
2.4.3	Slot 5	11
2.4.4	Slot 6	12
2.4.5	Slot 7	13
2.5	FID Slots	14
2.5.1	Slot 0	14
2.5.2	Slot 1	15
2.5.3	Slot 2	16
A	Summary	17
A.1	Status	17
A.2	Comments	17

1 Front

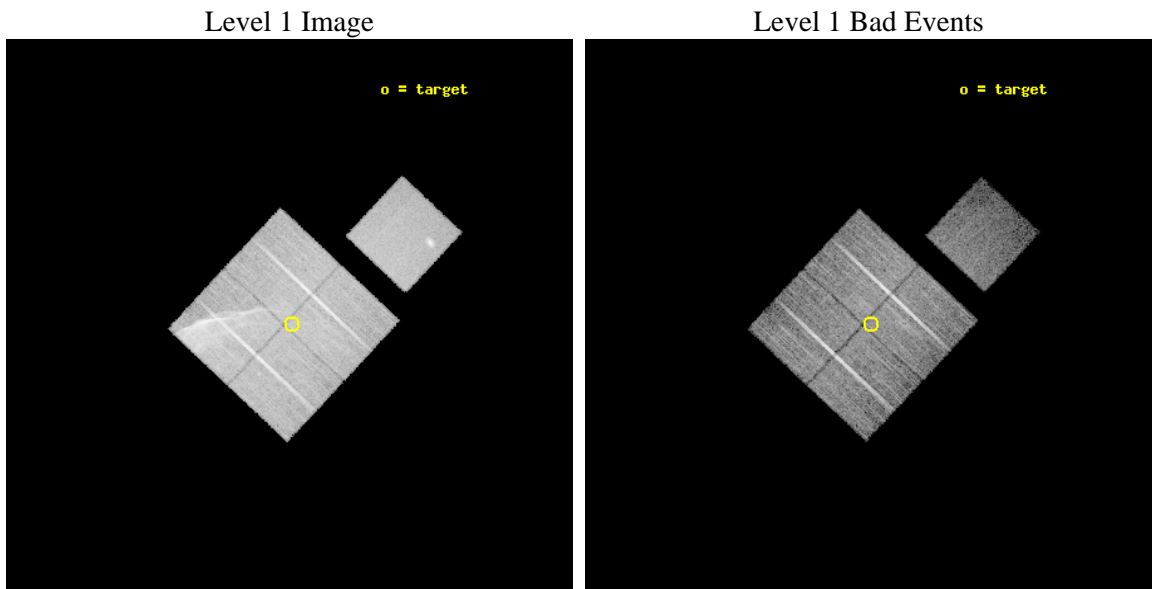
seq_num	500317	Sequence number
obs_id	4390	Observation id
title	STUDYING HIGH MACH NUMBER SHOCKS IN YOUNG SUPERNOVA REMNANTS WITH CHANDRA	Proposal title
observer	Prof. John Hughes	Principal investigator
object	SN1006	Source name
dtcycle	0	
cycle	P	events from which exps? Prim/Second/Both
ra_targ	225.7	Observer's specified target RA [deg]
dec_targ	-41.7083	Observer's specified target Dec [deg]
ra_nom	225.7058398263	Nominal RA [deg]
dec_nom	-41.706683960487	Nominal Dec [deg]
roll_nom	43.212571950572	Nominal Roll [deg]
revision	3	Processing version of data
ontime	20059.571395606	Sum of GTIs [s]
livetime	19797.478327681	Livetime [s]
ontime0	20046.884354591	Sum of GTIs [s]
ontime1	20056.348355234	Sum of GTIs [s]
ontime2	20056.389375389	Sum of GTIs [s]
ontime3	20059.571395606	Sum of GTIs [s]
ontime7	20056.471475303	Sum of GTIs [s]
l2events	150139	Number of level 2 events



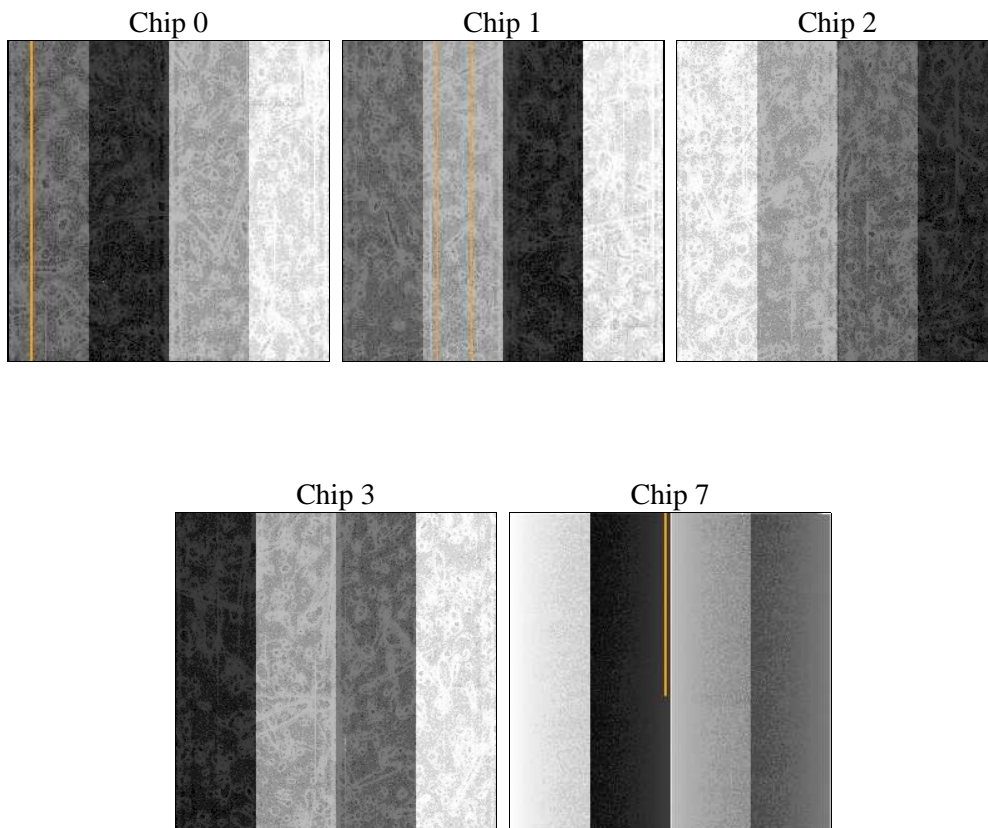
2 OBI

2.1 OBI

2.1.1 Images



2.1.2 Bias



2.1.3 Parameters

obi_num	0	Obi number	sched_exp_time	20284.754000	[s] Scheduled observation exposure time
ascdsver	8.4.5	Processing system revision	ontime	20059.571395606	Sum of GTIs [s]
caldbver	4.5.2	 	ontime0	20046.884354591	Sum of GTIs [s]
date	2012-10-26T12:33:35	Date and time of file creation	ontime1	20056.348355234	Sum of GTIs [s]
revision	3	Processing version of data	ontime2	20056.389375389	Sum of GTIs [s]
			ontime3	20059.571395606	Sum of GTIs [s]
			ontime7	20056.471475303	Sum of GTIs [s]
			l1events	572905	Number of level 1 events

2.1.4 Events

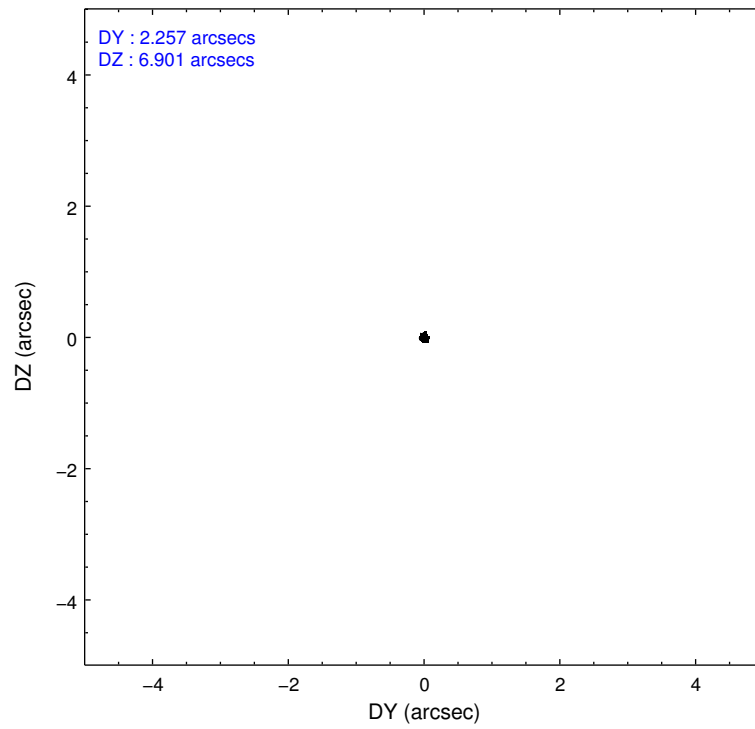
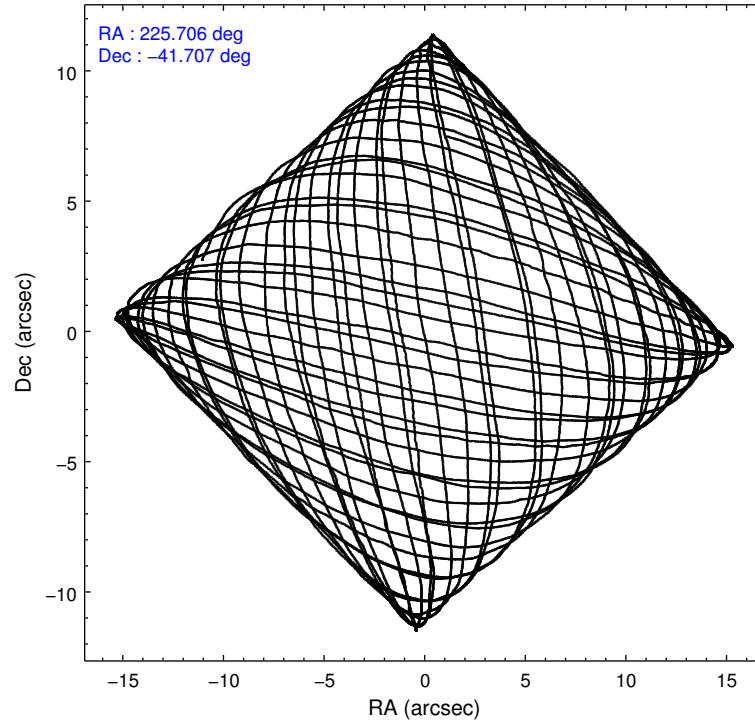
	ccd 0	ccd 1	ccd 2	ccd 3	ccd 7
level 1 events	148990	105268	109433	110737	98477
rejected events	85417	84558	97963	92506	50435
rejected %	57%	80%	89%	83%	51%

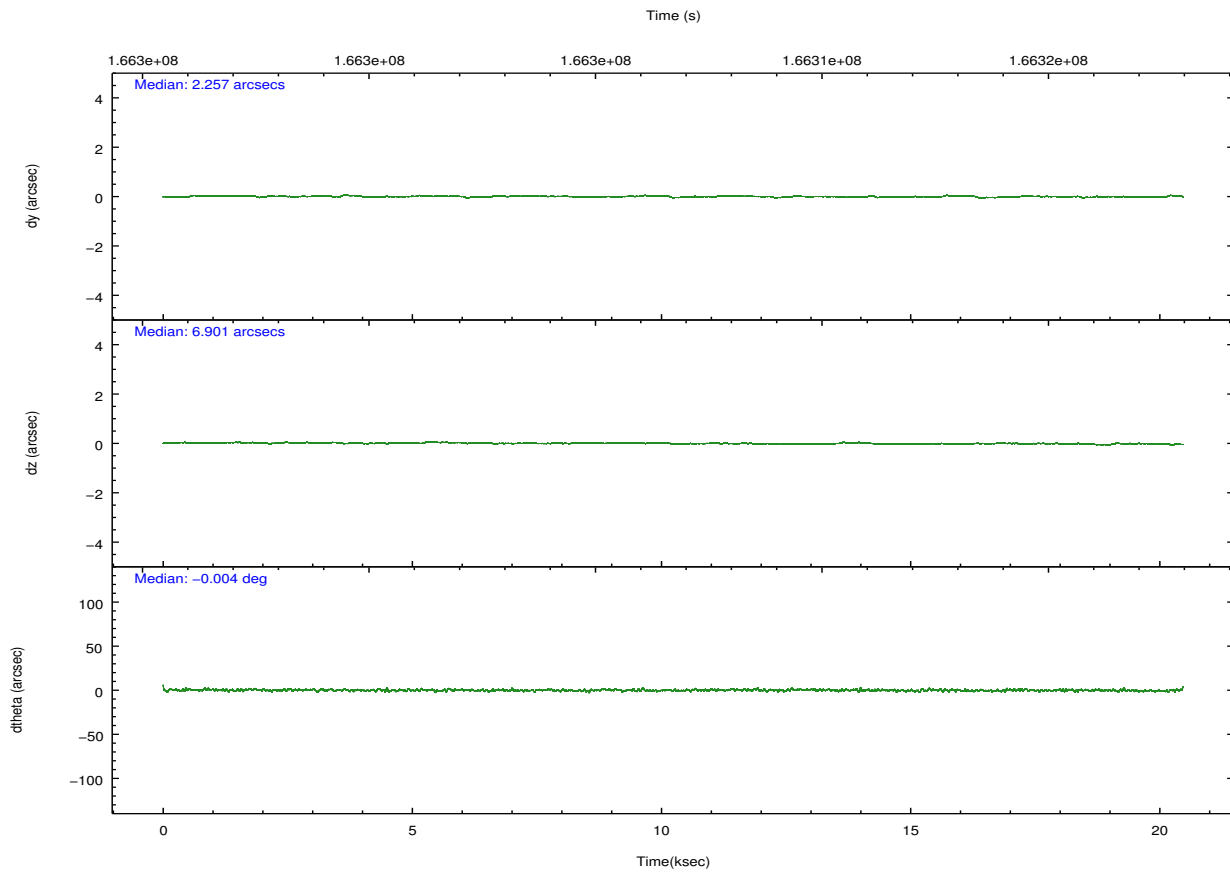
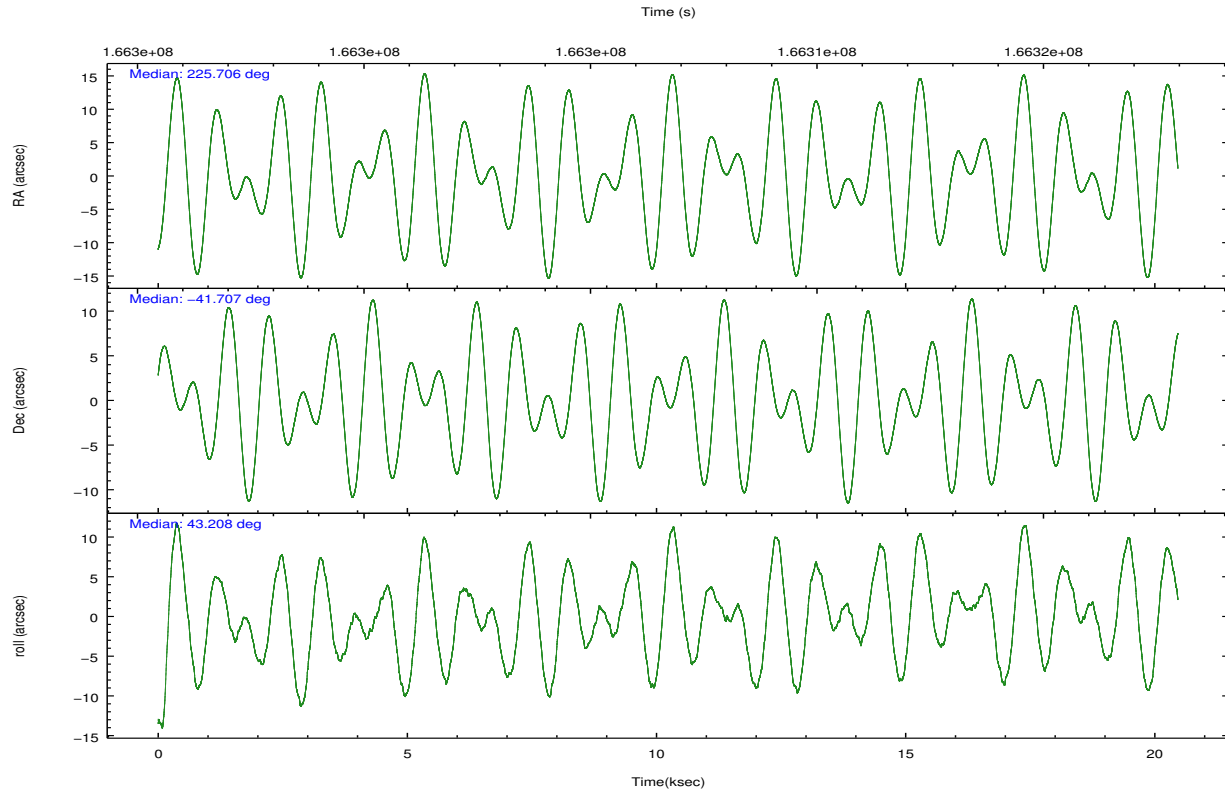
	ccd 0	ccd 1	ccd 2	ccd 3	ccd 7
grade 0 events	49379	13147	5307	11454	5412
	33%	12%	4%	10%	5%
grade 1 events	198	67	59	80	71
	0%	0%	0%	0%	0%
grade 2 events	6855	2634	2270	2554	9347
	4%	2%	2%	2%	9%
grade 3 events	2437	1368	1118	1215	4521
	1%	1%	1%	1%	4%
grade 4 events	2361	1388	1021	1174	4474
	1%	1%	0%	1%	4%
grade 5 events	3099	3194	2842	3375	10400
	2%	3%	2%	3%	10%
grade 6 events	2560	2181	1759	1841	24310
	1%	2%	1%	1%	24%
grade 7 events	82101	81289	95057	89044	39942
	55%	77%	86%	80%	40%

2.2 Compared Parameters

Parameter	Planned	Actual	Parameter	Planned	Actual
Instrument	ACIS	ACIS	Obspar format version number	7	7
Detector	ACIS-01237	ACIS-01237	Obspar file type	PREDICTED	ACTUAL
Grating	NONE	NONE	Obspar update status	NONE	UPDATED
Data mode	VFAINT	VFAINT	Number of optional ACIS chips dropped	0	0
Observation mode	POINTING	POINTING	On-chip summing requested	N	N
[deg] Pointing RA	225.695375	225.7058398263042	Subarray requested	NONE	NONE
[deg] Pointing Dec	-41.732945	-41.70668396048662	Alternating exposures requested	N	N
[deg] Pointing Roll	42.996923	43.21257195057248	[s] Primary exposure time	0.000000	3.1
[mm] SIM focus pos	-0.782348	-0.7809083437167272			
[mm] SIM defocus	0	0.001439871863259334			
[mm] SIM translation stage pos	-233.592463	-233.5874344608287			
[mm] SIM translation stage offset	0	-0.005018542100998502			
[s] Observation start time (MET)	166296659.184000	166296282.91316			
Observation start date	2003-04-09T17:29:55	2003-04-09T17:24:42			
[s] Observation end time (MET)	166316944.184000	166317258.51404			
Observation end date	2003-04-09T23:08:00	2003-04-09T23:14:18			
Read mode	TIMED	TIMED			

2.3 Aspect



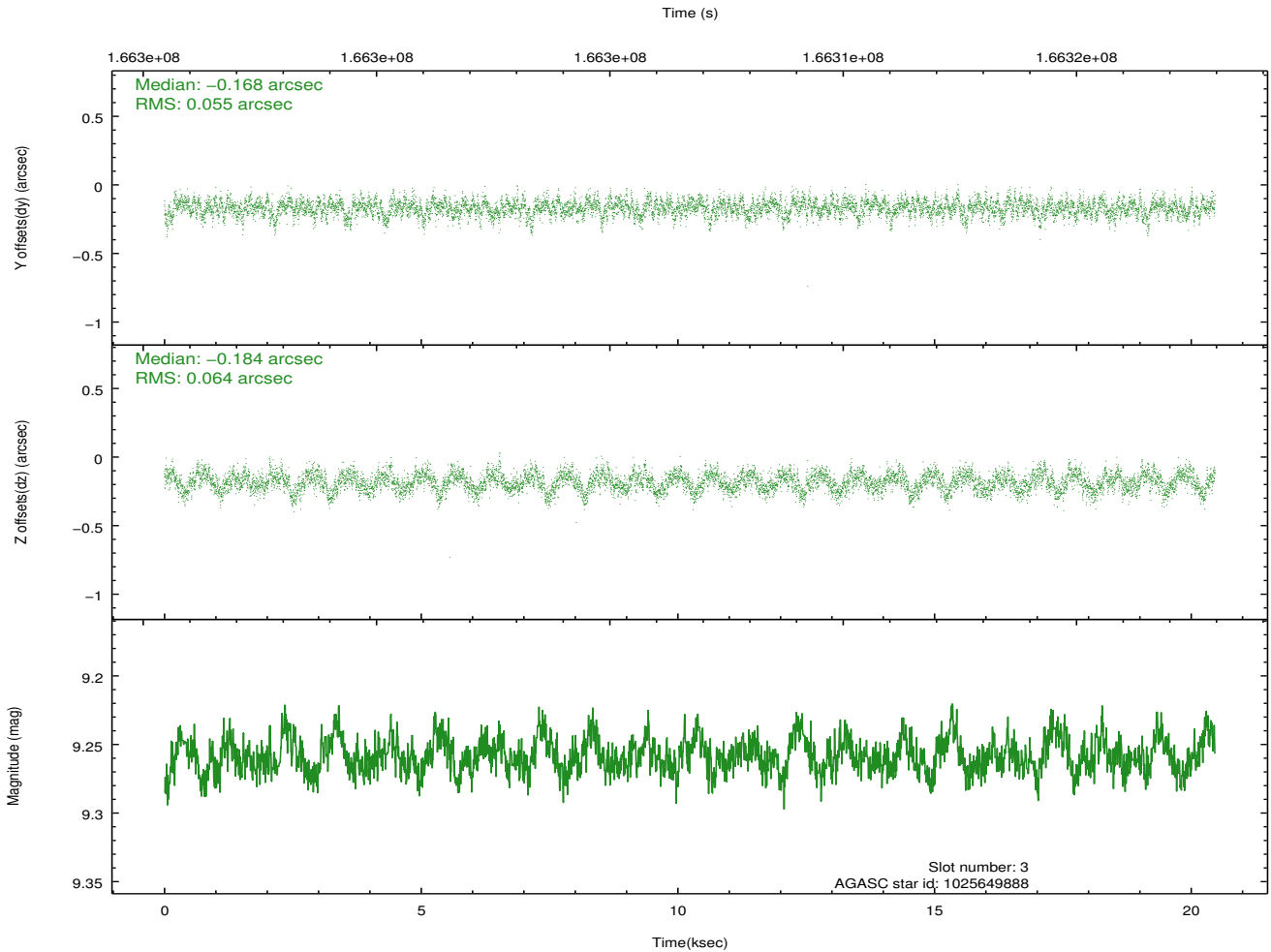
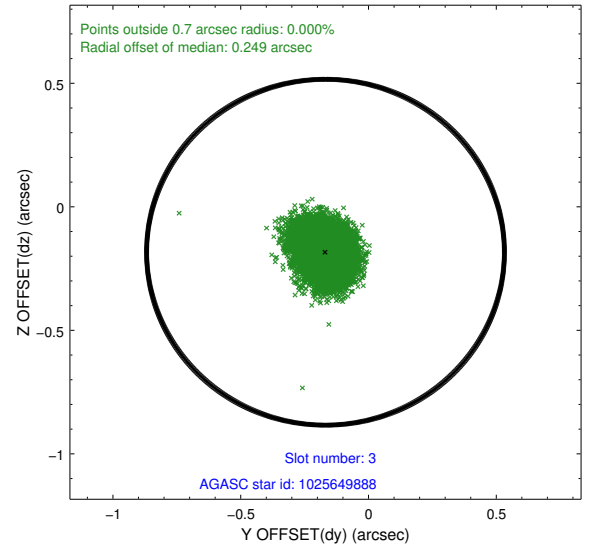
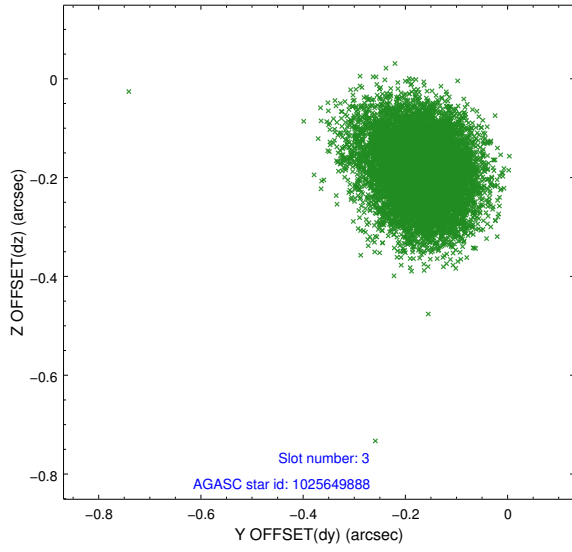


Slot Statistics

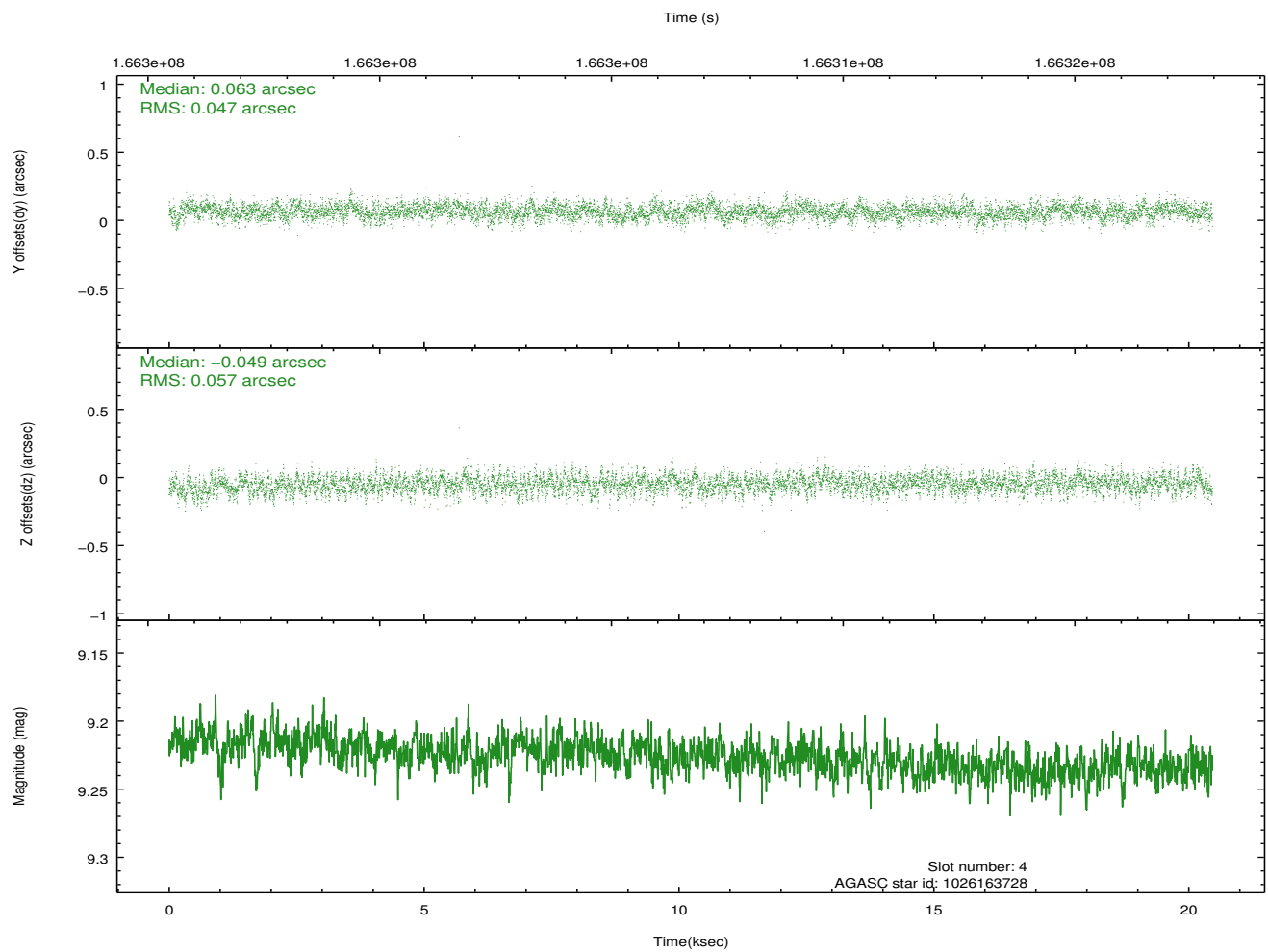
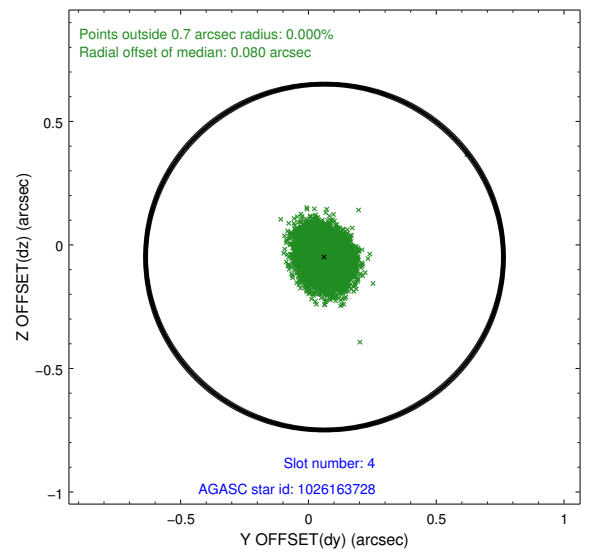
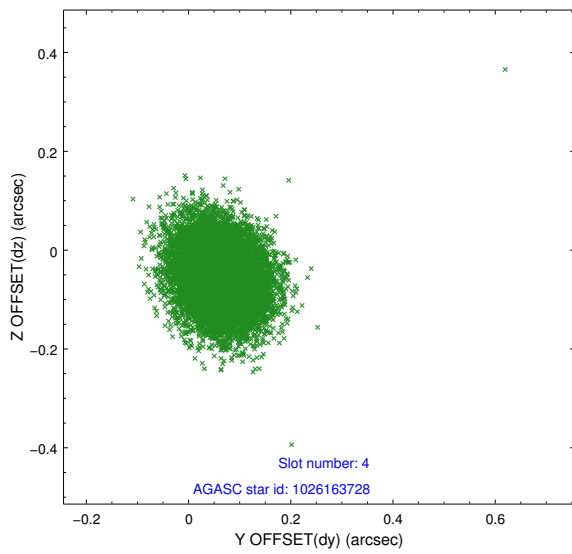
slot	status	id	mag	n_pts	med_dy	med_dz	dr1	dr2	ra	dec	mean_y	mean_z
0	FID	ACIS-I-1	7.25	4992	-0.081	0.006	0.008	0.015	0.000000	0.000000	937.50	-830.26
1	FID	ACIS-I-2	7.16	4991	-0.054	-0.019	0.007	0.011	0.000000	0.000000	-756.46	-836.86
2	FID	ACIS-I-4	7.17	4992	0.037	0.080	0.006	0.012	0.000000	0.000000	2157.37	1069.56
3	GUIDE	1025649888	9.26	9982	-0.168	-0.184	0.090	0.146	225.540879	-41.189826	1026.95	1715.27
4	GUIDE	1026163728	9.23	9977	0.063	-0.049	0.079	0.127	225.377558	-41.568164	-222.39	1016.65
5	GUIDE	1026170368	9.30	9975	0.074	0.052	0.081	0.131	225.763429	-42.291155	-1237.52	-1593.28
6	GUIDE	1026170800	9.02	9981	0.204	0.089	0.066	0.110	225.400024	-42.381702	-2167.76	-1173.74
7	GUIDE	1026183784	9.17	9976	-0.172	0.097	0.080	0.130	226.363370	-41.841537	1038.96	-1512.60

2.4 Star Slots

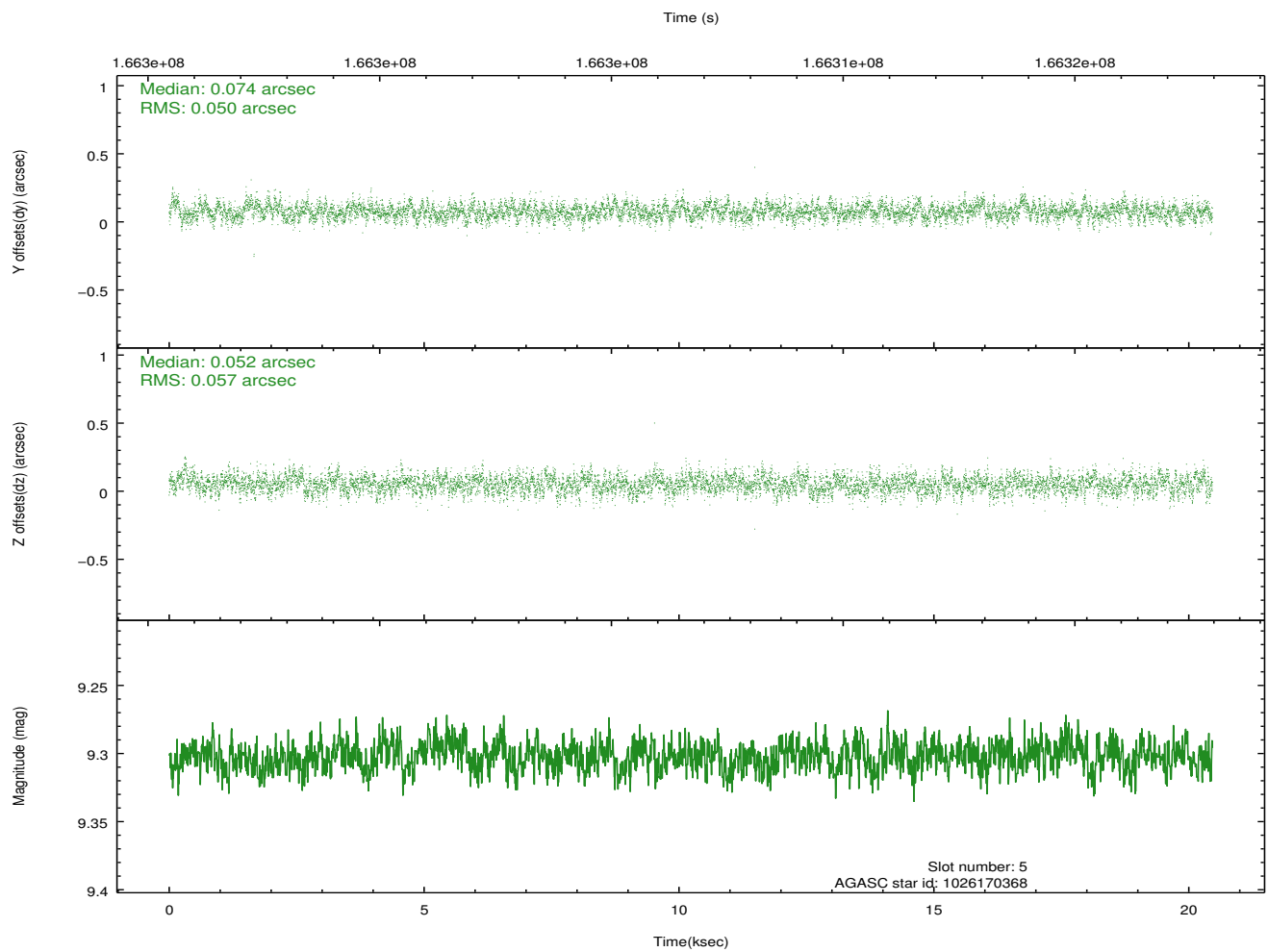
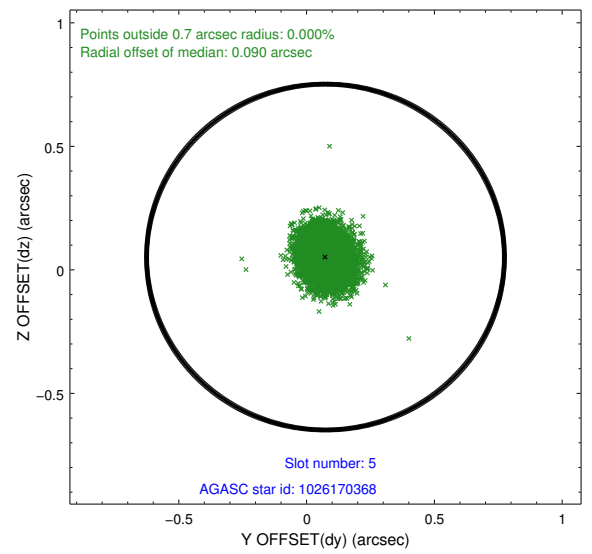
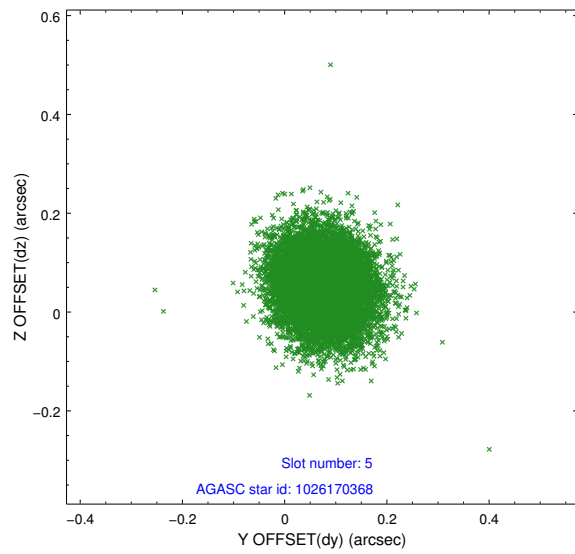
2.4.1 Slot 3



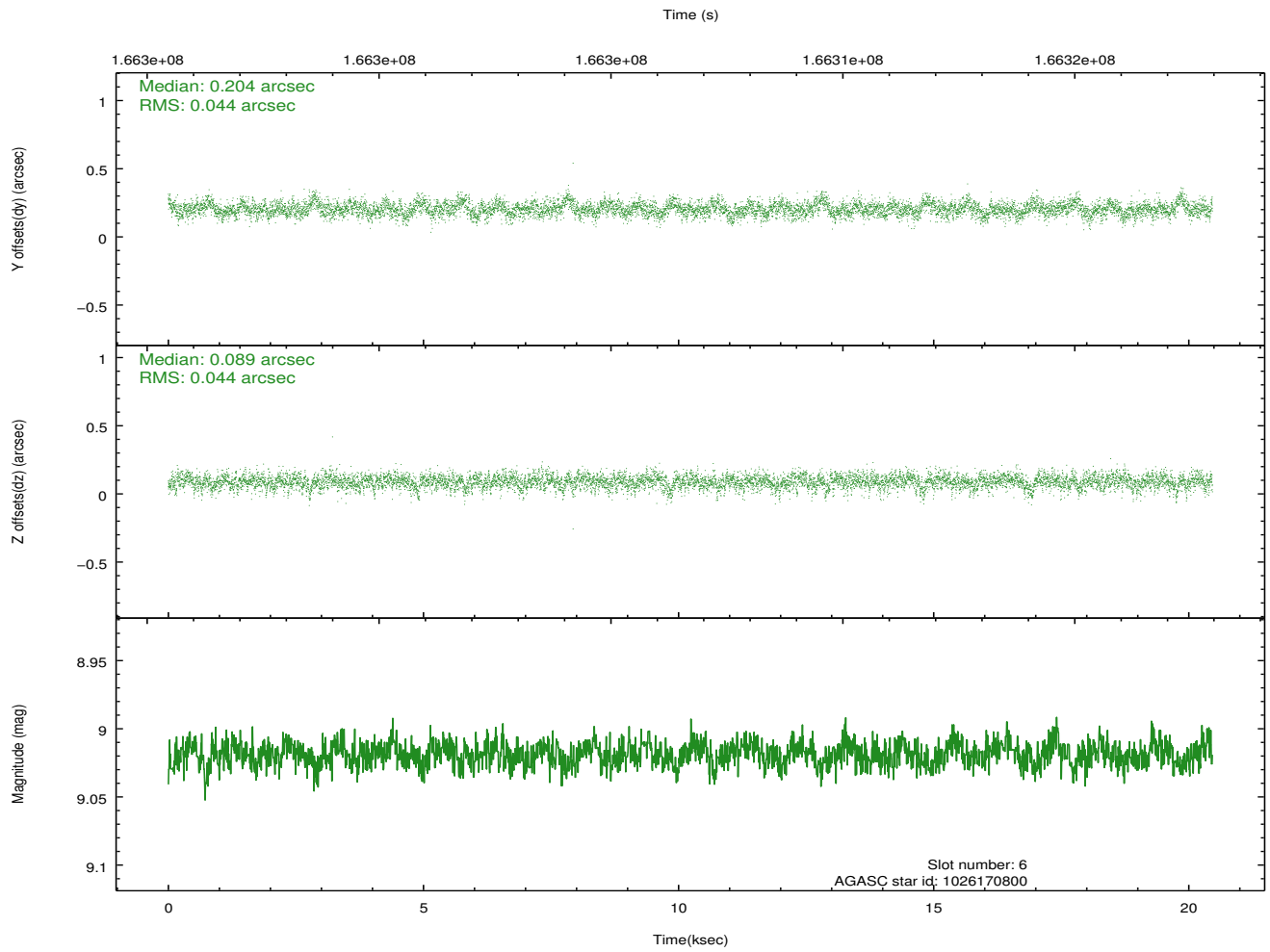
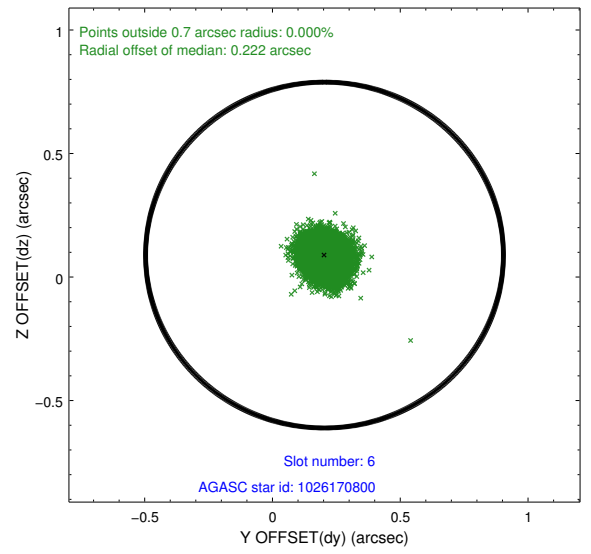
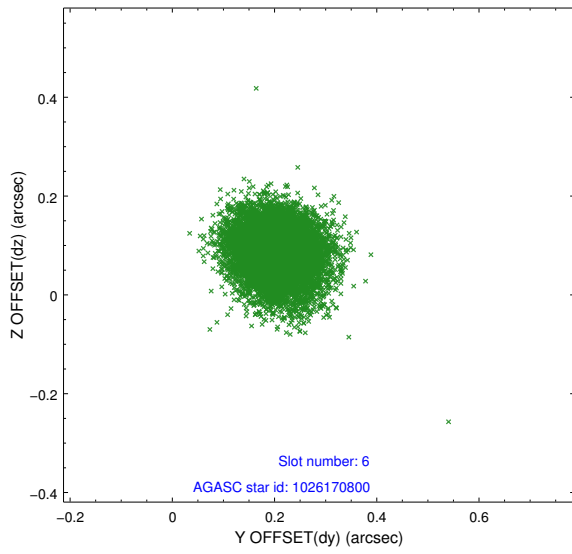
2.4.2 Slot 4



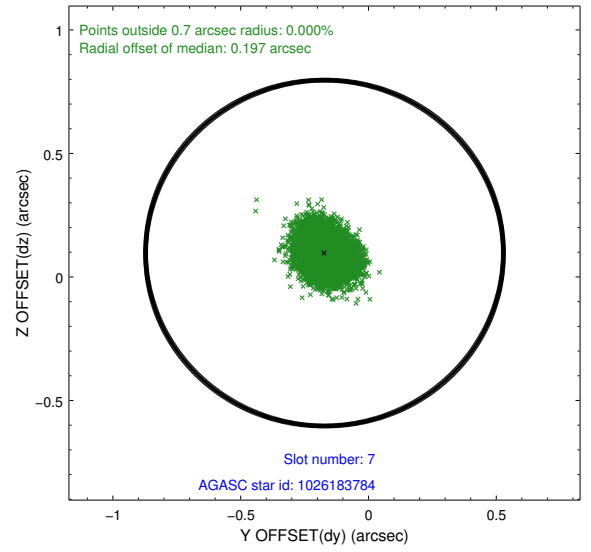
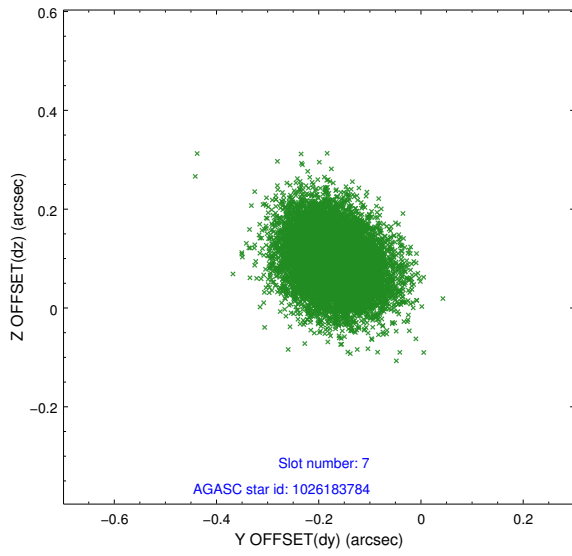
2.4.3 Slot 5



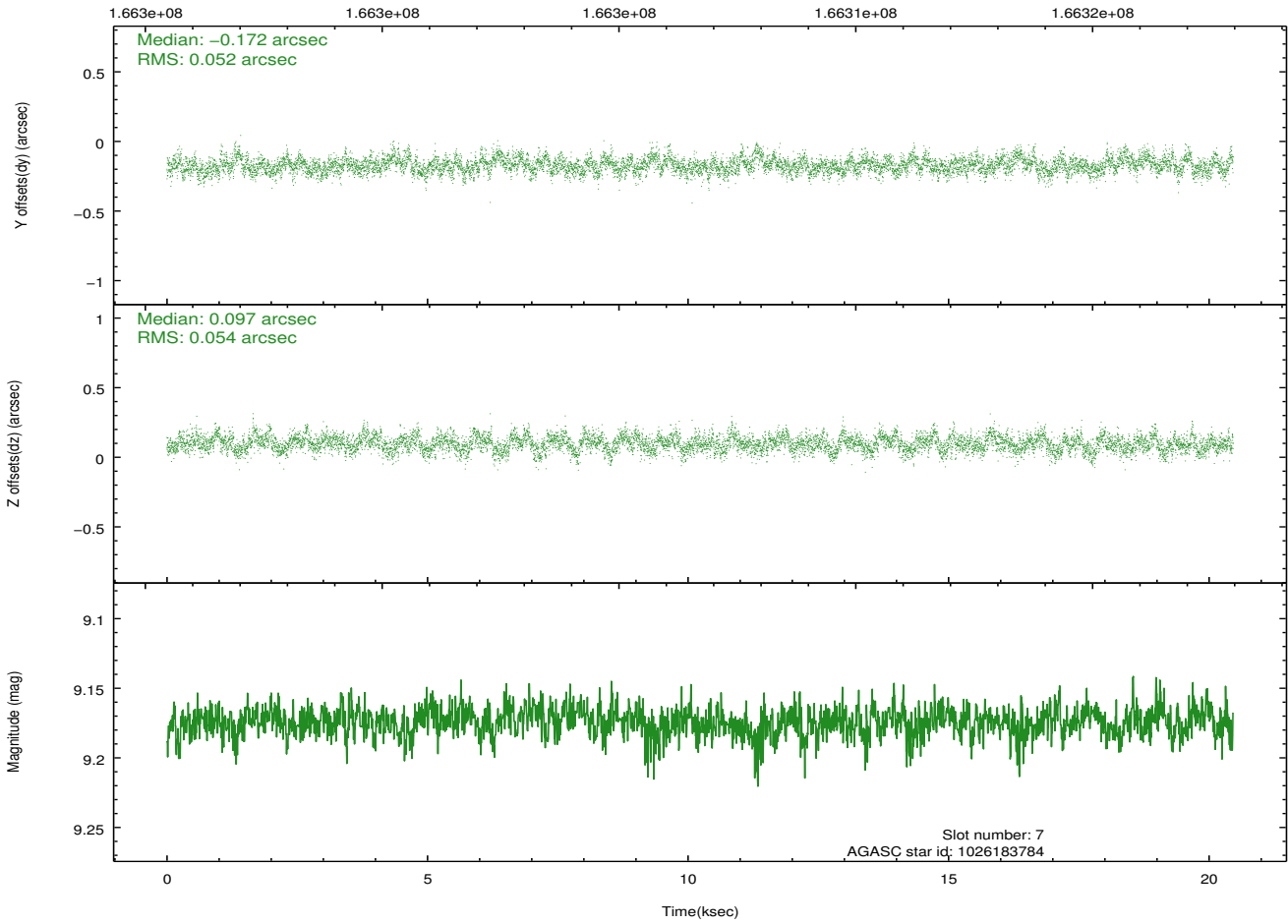
2.4.4 Slot 6



2.4.5 Slot 7

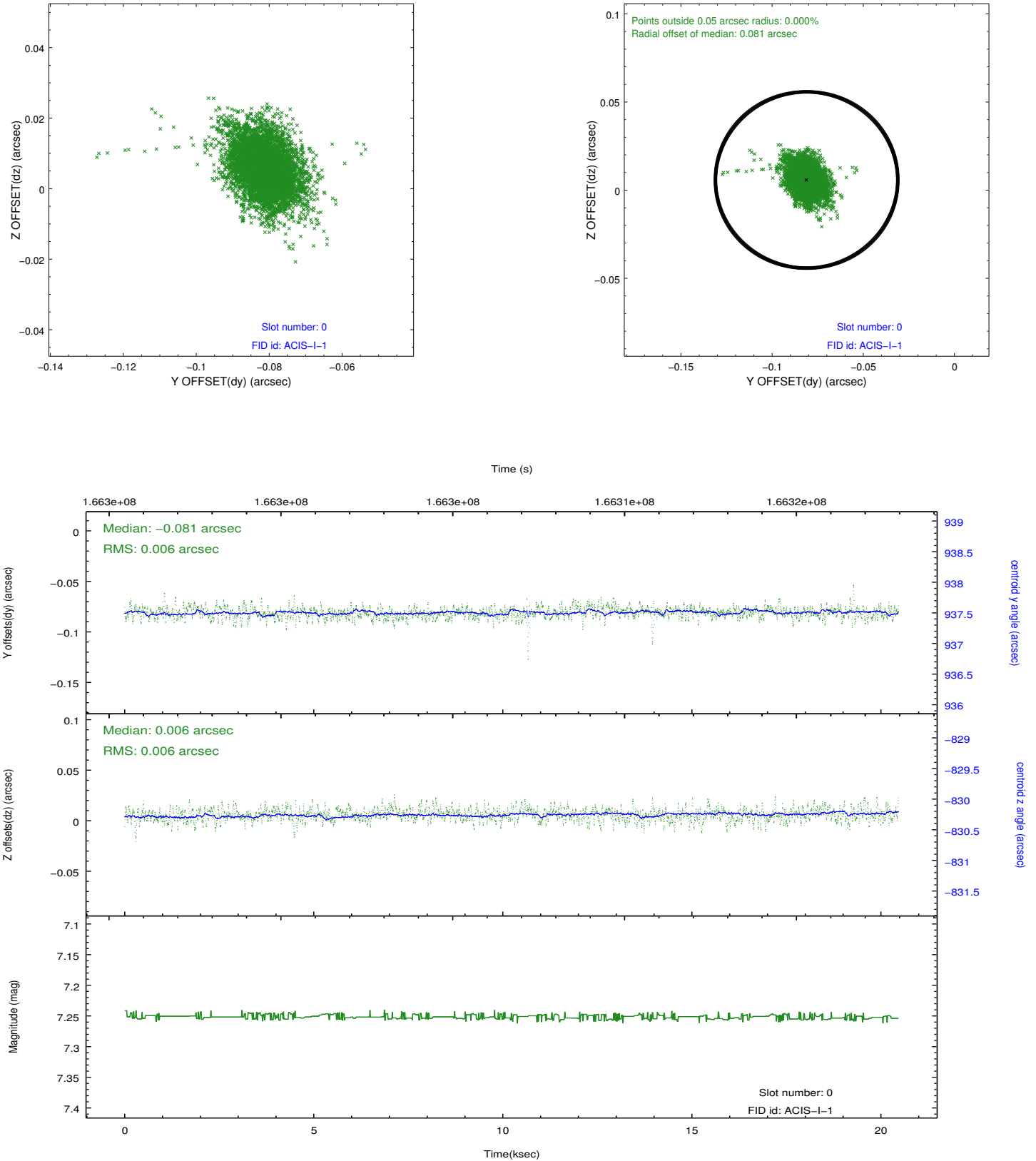


Time (s)

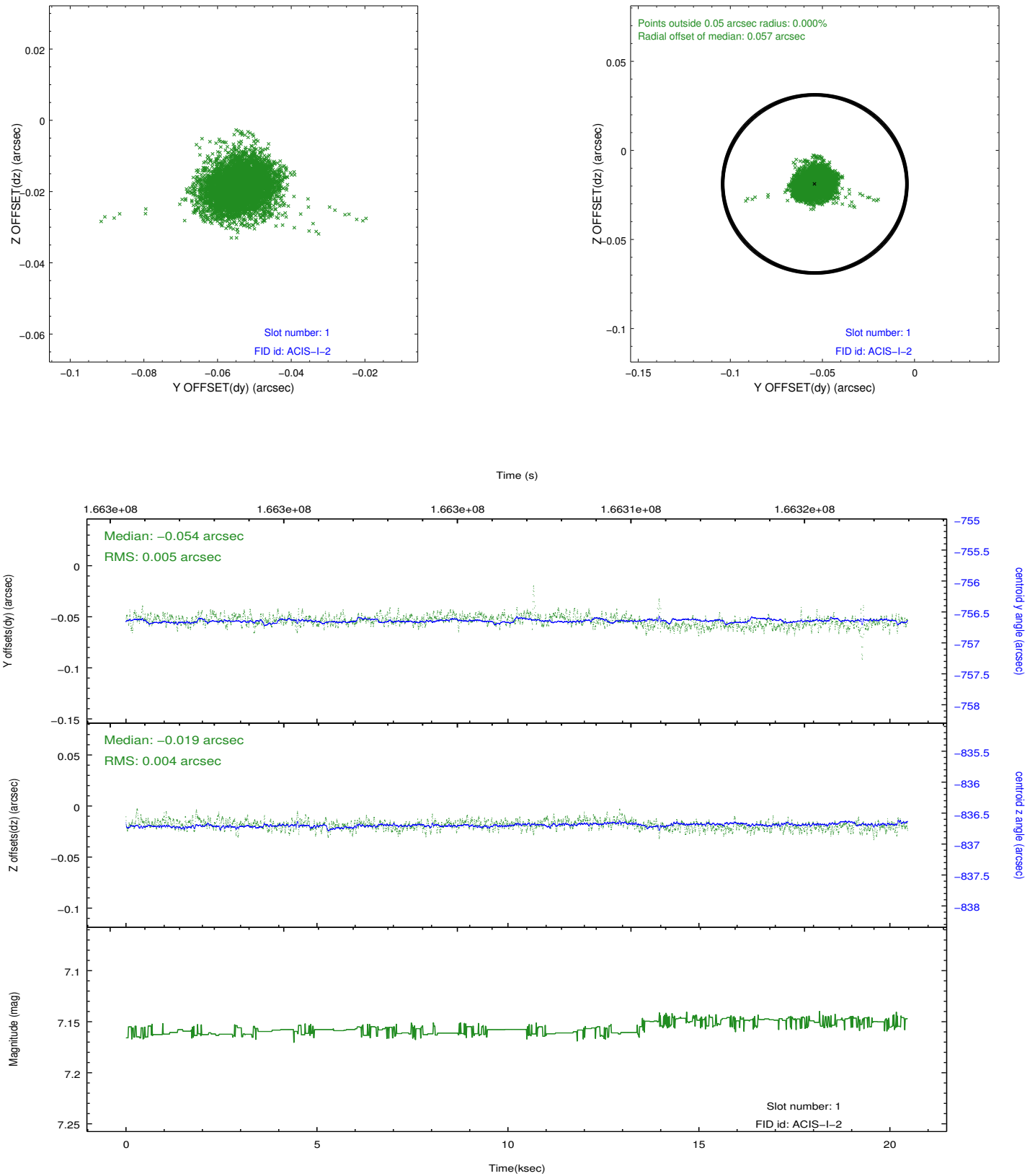


2.5 FID Slots

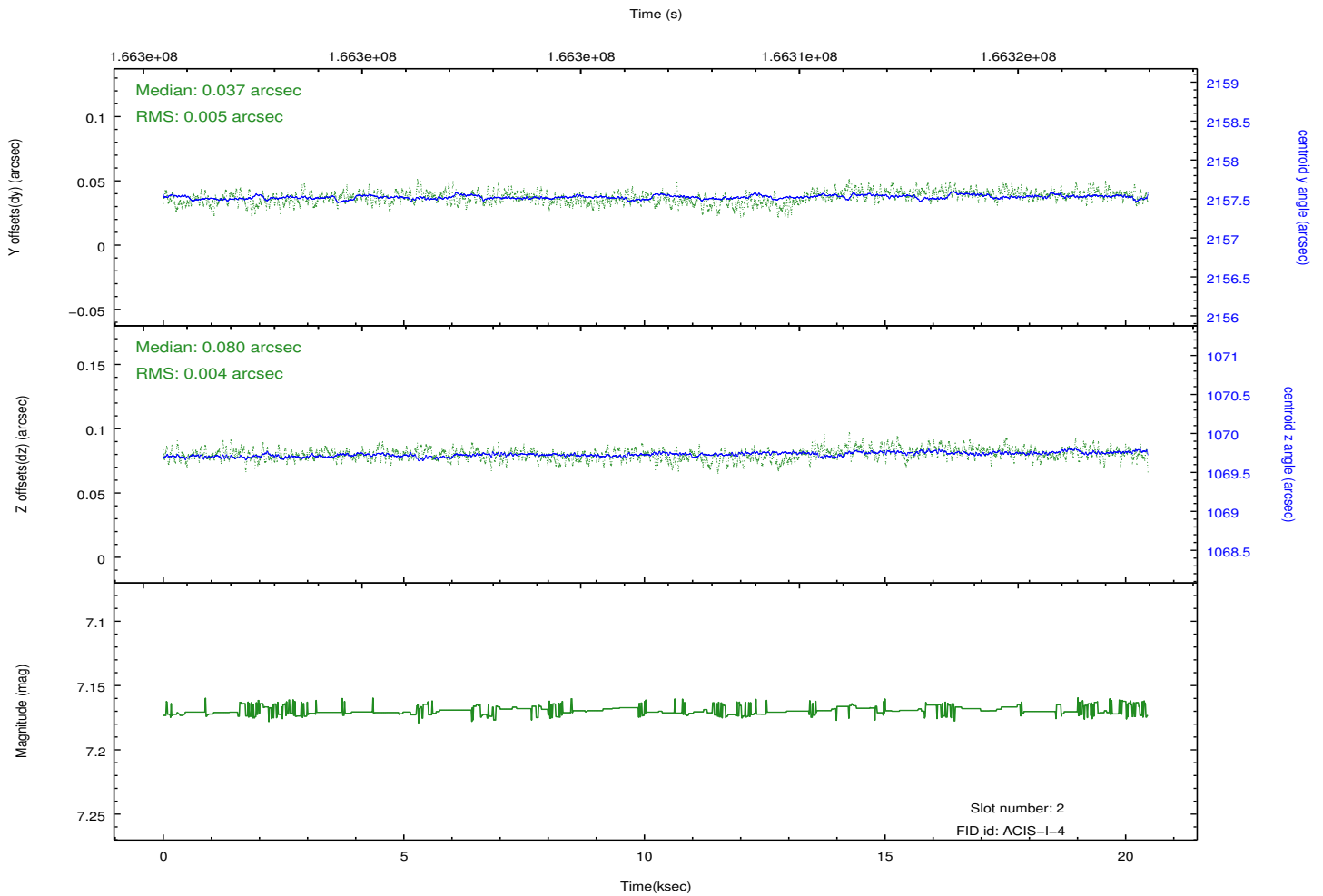
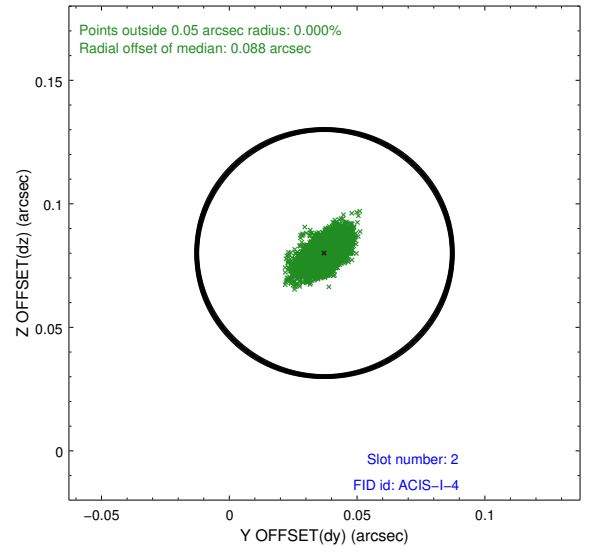
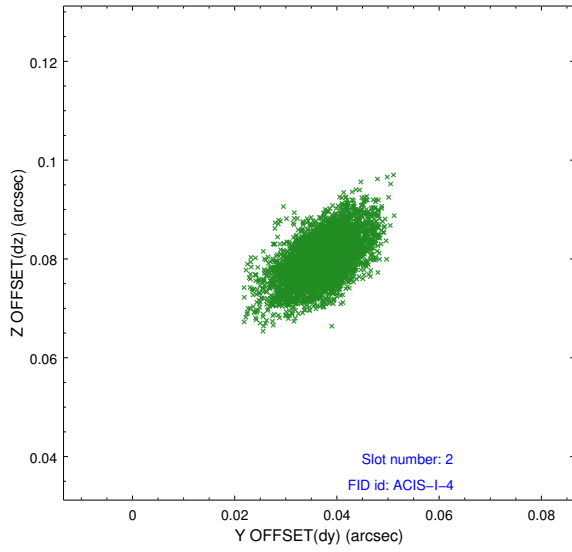
2.5.1 Slot 0



2.5.2 Slot 1



2.5.3 Slot 2



A Summary

A.1 Status

V&V Scientist	Jen Lauer
V&V Date (YYYY-MM-DD)	2012.11.14
V&V Edition	1
V&V Disposition and Status	OK
V&V Charge Time	20.06

A.2 Comments