

V&V Reference Report

L2 ASCDS Version : 8.4.5

Observation 4480 - L2 Version 3
Chandra X-Ray Center

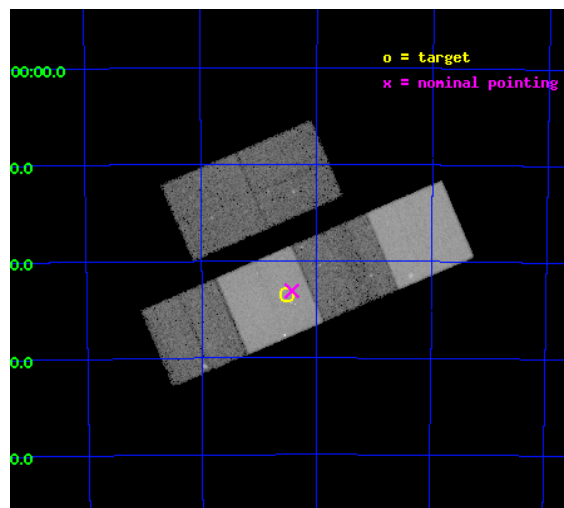
L2 Processing Date : Nov 8 2012

Contents

1	Front	2
2	OBI	3
2.1	OBI	3
2.1.1	Images	3
2.1.2	Bias	3
2.1.3	Parameters	4
2.1.4	Events	4
2.2	Compared Parameters	5
2.3	Aspect	6
2.4	Star Slots	9
2.4.1	Slot 3	9
2.4.2	Slot 4	10
2.4.3	Slot 5	11
2.4.4	Slot 6	12
2.4.5	Slot 7	13
2.5	FID Slots	14
2.5.1	Slot 0	14
2.5.2	Slot 1	15
2.5.3	Slot 2	16
A	Summary	17
A.1	Status	17
A.2	Comments	17

1 Front

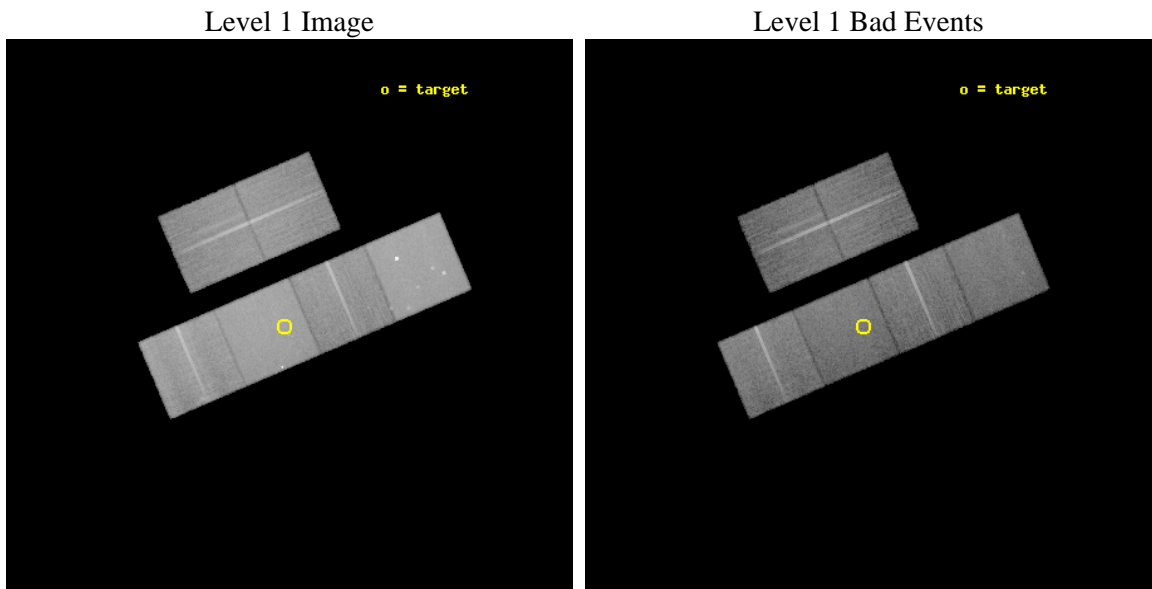
seq_num	200249	Sequence number
obs_id	4480	Observation id
title	The Early Onset of X-ray Emission from Planetary Nebulae	Proposal
observer	Dr. Joel Kastner	Principal investigator
object	Hen 2-99	Source name
dtycycle	0	
cycle	P	events from which exps? Prim/Second/Both
ra_targ	208.1275	Observer's specified target RA [deg]
dec_targ	-66.39	Observer's specified target Dec [deg]
ra_nom	208.10730794851	Nominal RA [deg]
dec_nom	-66.384709635055	Nominal Dec [deg]
roll_nom	156.87272260254	Nominal Roll [deg]
revision	3	Processing version of data
ontime	29113.256103992	Sum of GTIs [s]
livetime	28744.606525305	Livetime [s]
ontime2	29113.297143996	Sum of GTIs [s]
ontime3	29113.132983983	Sum of GTIs [s]
ontime5	29113.215063989	Sum of GTIs [s]
ontime6	29113.174023986	Sum of GTIs [s]
ontime7	29113.256103992	Sum of GTIs [s]
ontime8	29113.091944009	Sum of GTIs [s]
l2events	331378	Number of level 2 events



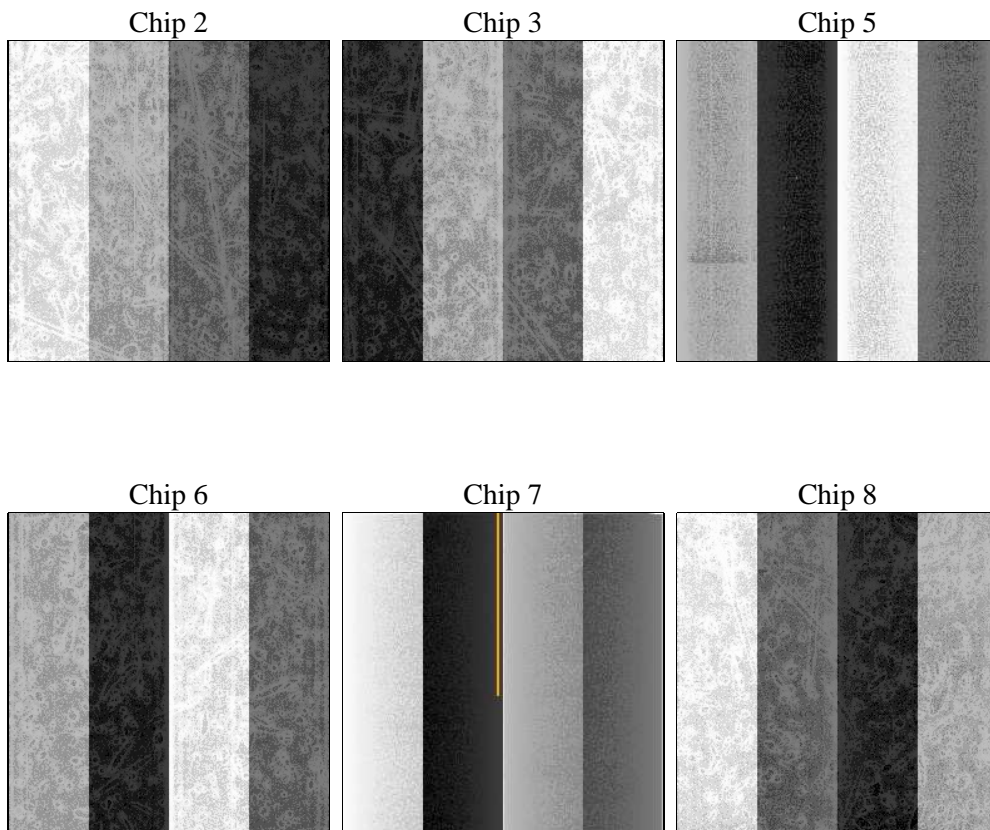
2 OBI

2.1 OBI

2.1.1 Images



2.1.2 Bias



2.1.3 Parameters

obi_num	0	Obi number	sched_exp_time	29011.000000	[s] Scheduled observation exposure time
ascdsver	8.4.5	Processing system revision	ontime	29113.256103992	Sum of GTIs [s]
caldbver	4.5.2	 	ontime2	29113.297143996	Sum of GTIs [s]
date	2012-11-08T02:22:47	Date and time of file creation	ontime3	29113.132983983	Sum of GTIs [s]
revision	3	Processing version of data	ontime5	29113.215063989	Sum of GTIs [s]
			ontime6	29113.174023986	Sum of GTIs [s]
			ontime7	29113.256103992	Sum of GTIs [s]
			ontime8	29113.091944009	Sum of GTIs [s]
			l1events	1259146	Number of level 1 events

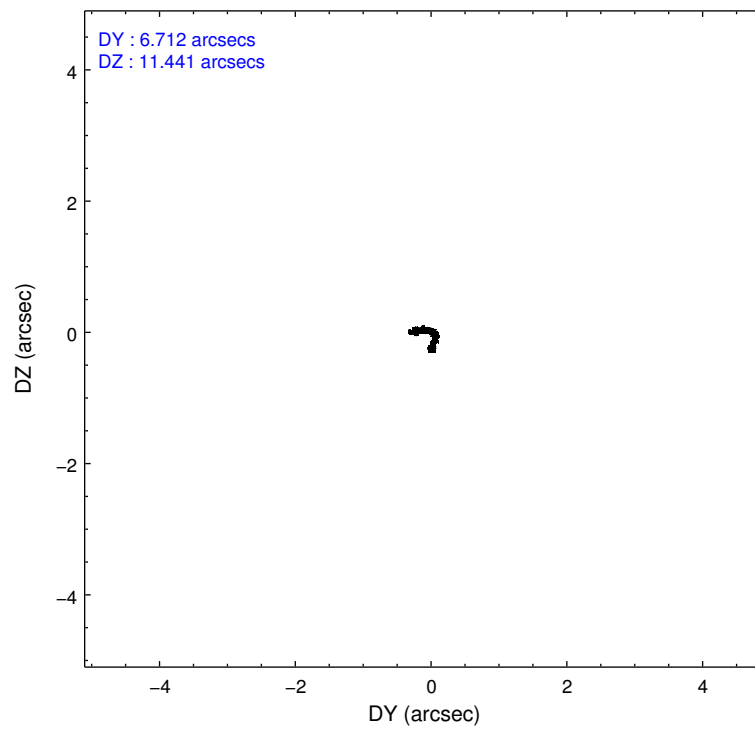
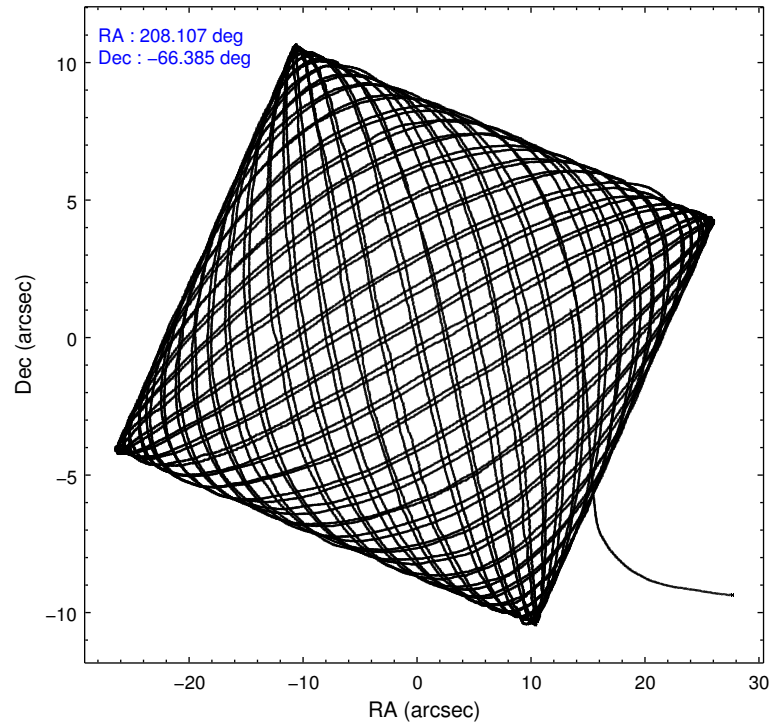
2.1.4 Events

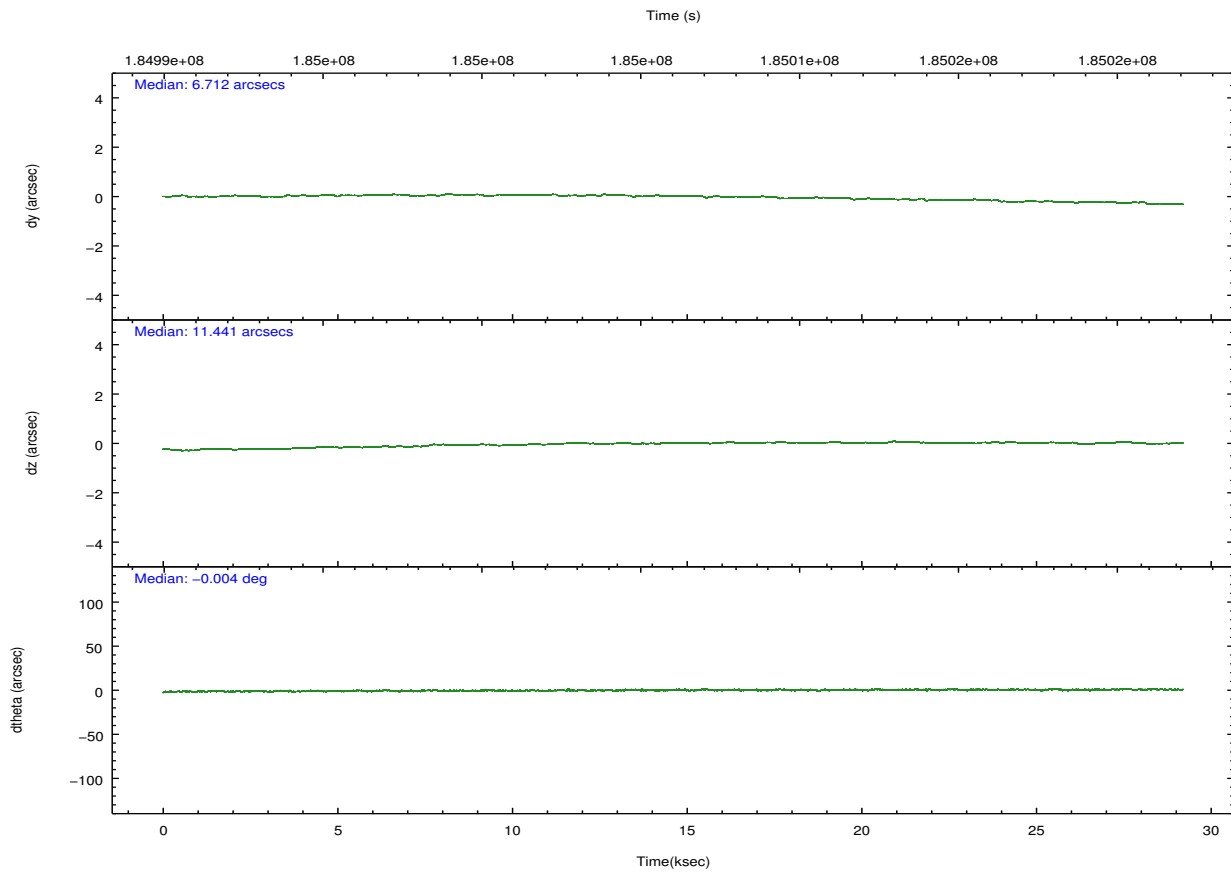
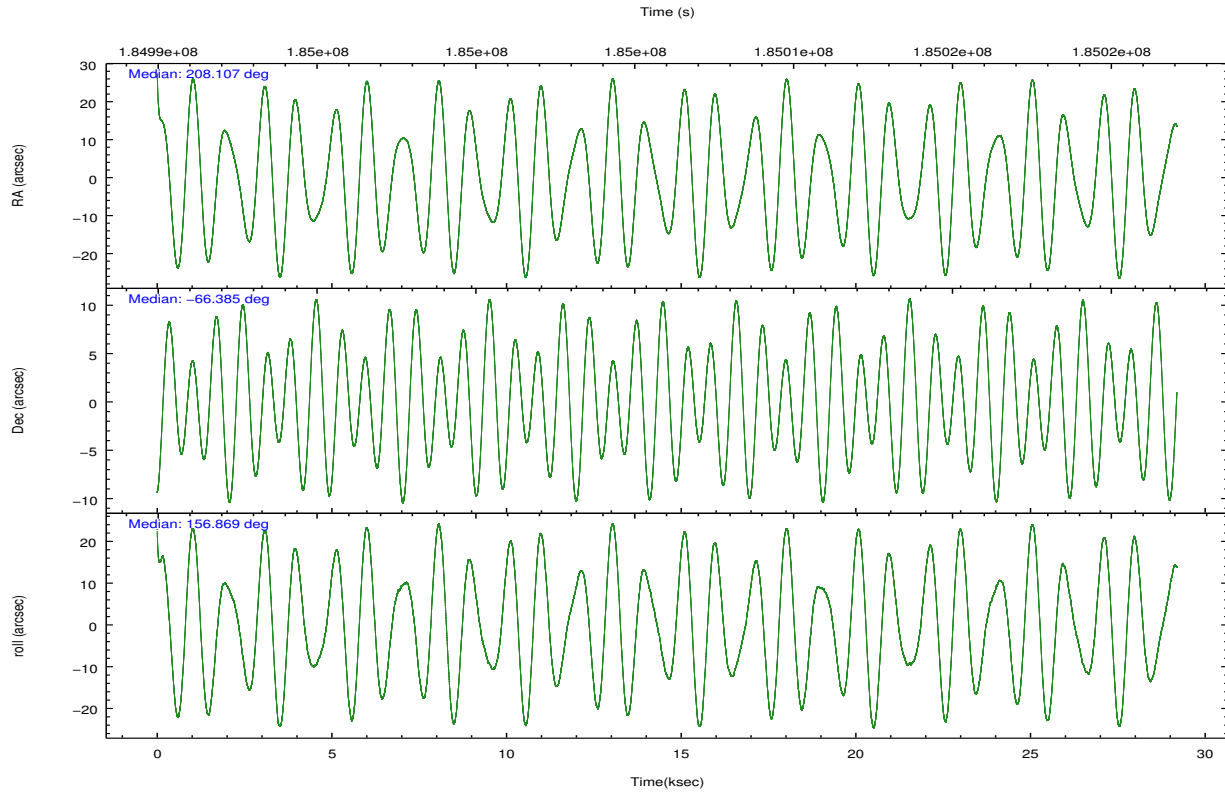
	ccd 2	ccd 3	ccd 5	ccd 6	ccd 7	ccd 8		ccd 2	ccd 3	ccd 5	ccd 6	ccd 7	ccd 8
level 1 events	173593	163300	277637	174271	250780	219565	grade 0 events	11931	11081	21086	12555	12264	19715
rejected events	149271	140134	137570	148110	133027	166449		6%	6%	7%	7%	4%	8%
rejected %	85%	85%	49%	84%	53%	75%	grade 1 events	107	101	316	105	219	152
								0%	0%	0%	0%	0%	0%
							grade 2 events	4868	4361	39695	5138	23262	10910
								2%	2%	14%	2%	9%	4%
							grade 3 events	1997	1953	6090	2070	10425	5428
								1%	1%	2%	1%	4%	2%
							grade 4 events	1998	2039	5712	2080	10380	5063
								1%	1%	2%	1%	4%	2%
							grade 5 events	6805	7387	18413	7666	21916	10176
								3%	4%	6%	4%	8%	4%
							grade 6 events	3530	3733	67495	4321	61438	12003
								2%	2%	24%	2%	24%	5%
							grade 7 events	142357	132645	118830	140336	110876	156118
								82%	81%	42%	80%	44%	71%

2.2 Compared Parameters

Parameter	Planned	Actual	Parameter	Planned	Actual
Instrument	ACIS	ACIS	Obspar format version number	7	7
Detector	ACIS-235678	ACIS-235678	Obspar file type	PREDICTED	ACTUAL
Grating	NONE	NONE	Obspar update status	NONE	UPDATED
Data mode	FAINT	FAINT	Number of optional ACIS chips dropped	0	0
Observation mode	POINTING	POINTING	On-chip summing requested	N	N
[deg] Pointing RA	208.174656	208.1073079485116	Subarray requested	NONE	NONE
[deg] Pointing Dec	-66.381072	-66.38470963505472	Alternating exposures requested	N	N
[deg] Pointing Roll	156.777807	156.8727226025401	[s] Primary exposure time	0.000000	3.2
[mm] SIM focus pos	-0.684267	-0.6828225247311905			
[mm] SIM defocus	0	0.001444936568705701			
[mm] SIM translation stage pos	-190.132523	-190.1400660498719			
[mm] SIM translation stage offset	0	0.00754346686406393			
[s] Observation start time (MET)	184991605.184000	184990574.52333			
Observation start date	2003-11-12T02:32:21	2003-11-12T02:16:14			
[s] Observation end time (MET)	185020616.184000	185021217.92466			
Observation end date	2003-11-12T10:35:52	2003-11-12T10:46:57			
Read mode	TIMED	TIMED			

2.3 Aspect



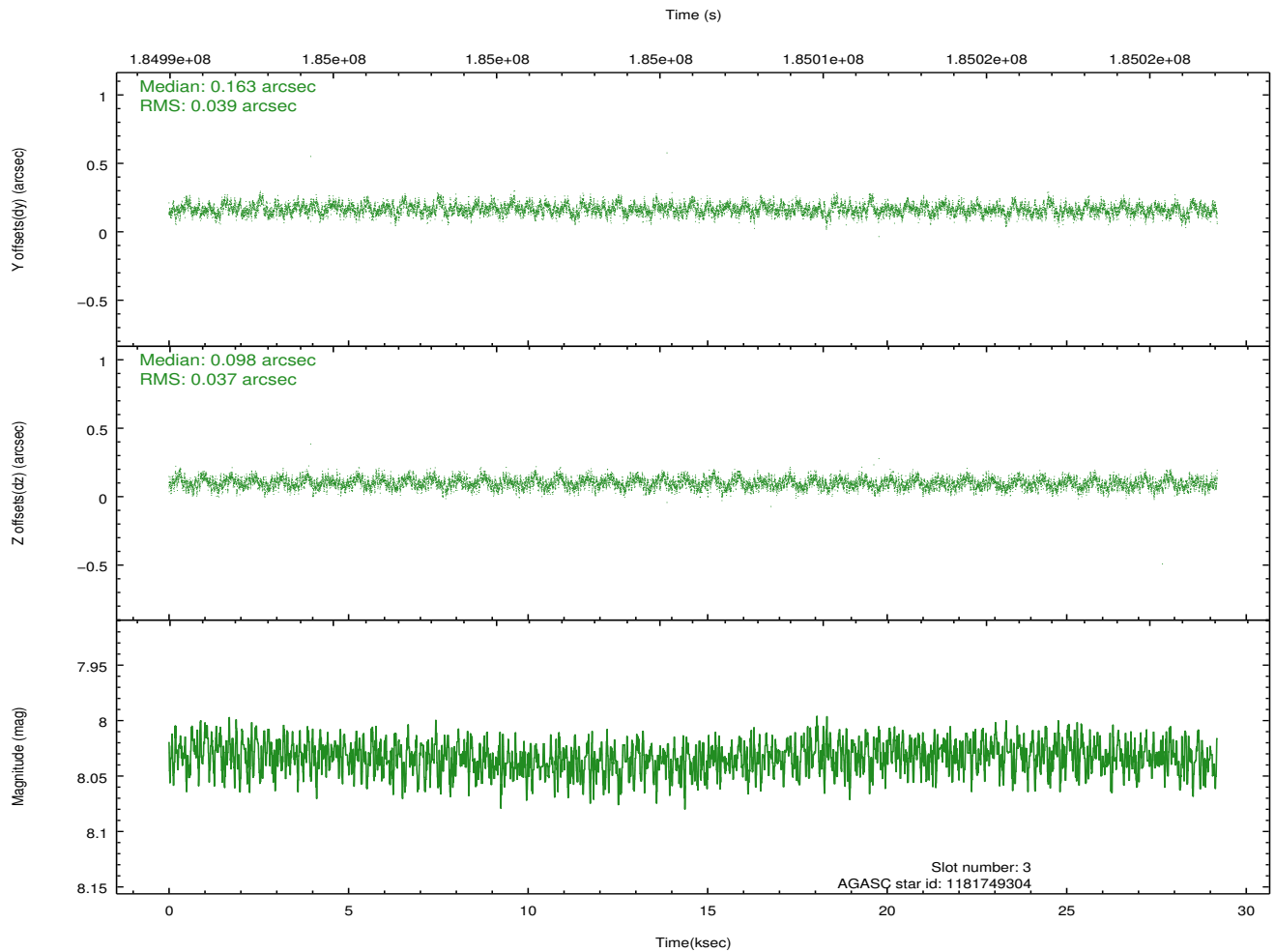
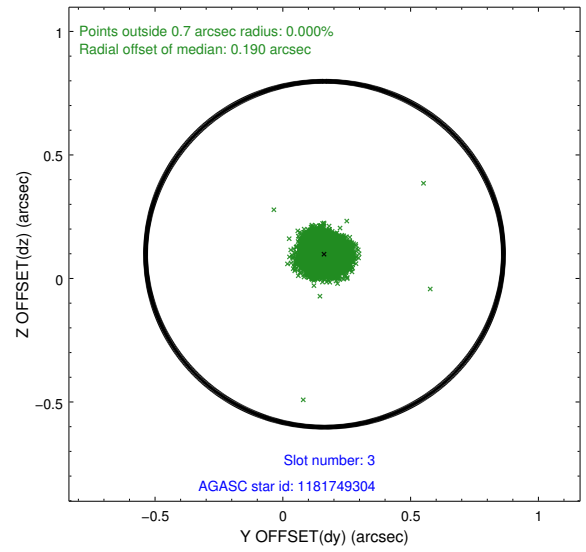
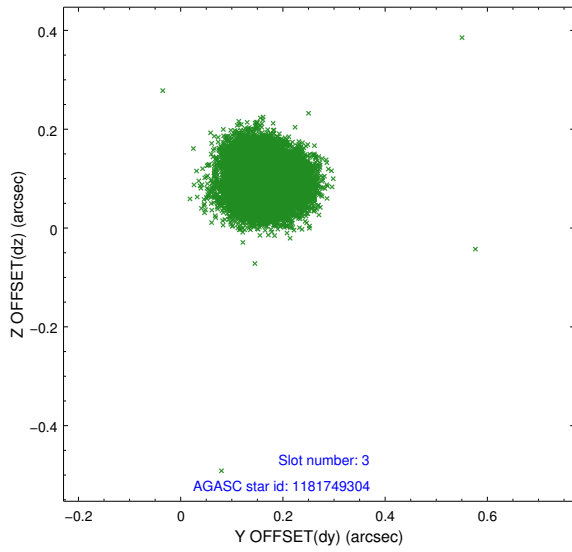


Slot Statistics

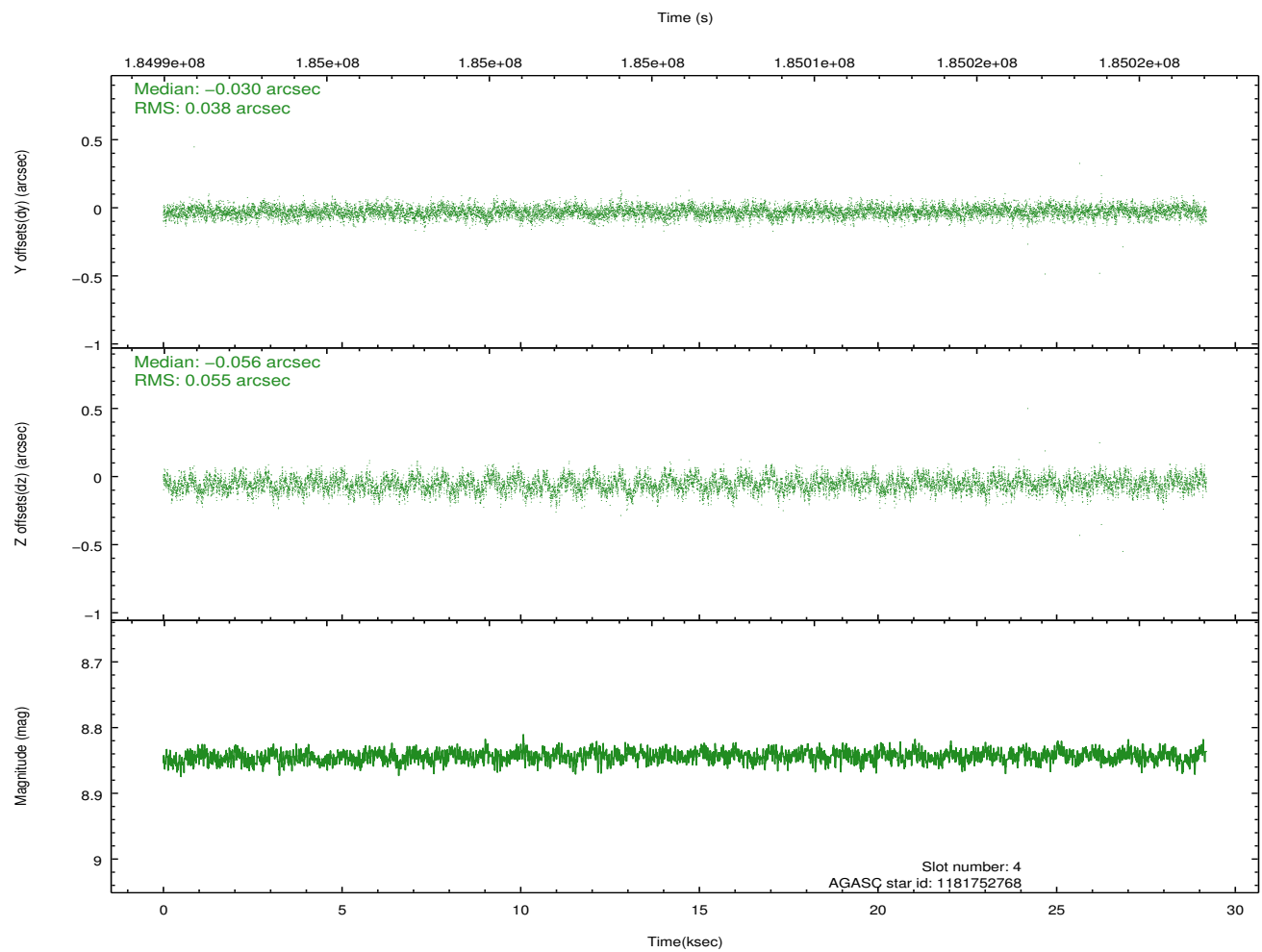
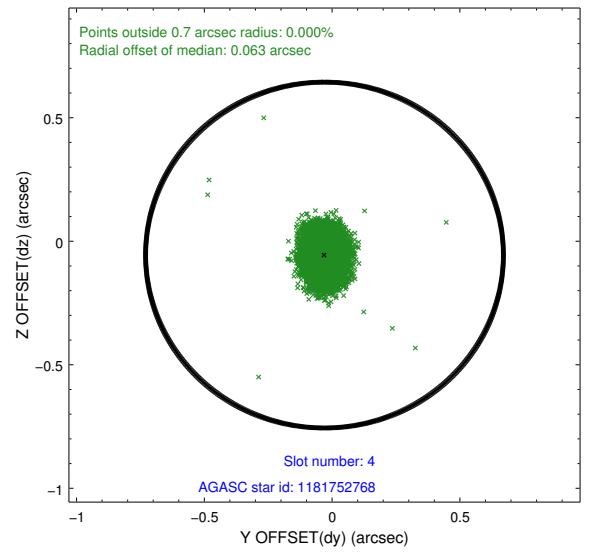
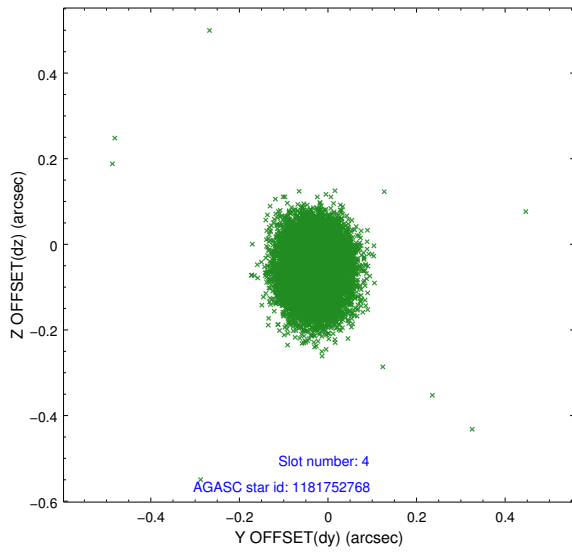
slot	status	id	mag	n_pts	med_dy	med_dz	dr1	dr2	ra	dec	mean_y	mean_z
0	FID	ACIS-S-1	7.18	7121	0.040	-0.087	0.008	0.014	0.000000	0.000000	936.63	-1728.41
1	FID	ACIS-S-5	7.23	7120	-0.038	0.026	0.007	0.012	0.000000	0.000000	-1812.36	169.23
2	FID	ACIS-S-6	7.34	7121	-0.023	0.073	0.008	0.013	0.000000	0.000000	402.09	813.28
3	GUIDE	1181749304	8.03	14237	0.163	0.098	0.058	0.091	206.326659	-66.754661	1867.25	2307.19
4	GUIDE	1181752768	8.84	14239	-0.030	-0.056	0.070	0.114	209.314371	-66.275722	-1373.01	-985.46
5	GUIDE	1181757880	8.70	14239	-0.033	0.034	0.071	0.115	207.575549	-66.823069	151.00	1800.80
6	GUIDE	1181759232	7.03	14242	-0.062	0.015	0.049	0.077	208.961383	-66.386458	-1052.75	-422.55
7	GUIDE	1181759792	8.19	14238	-0.043	-0.089	0.065	0.101	208.447476	-66.784712	-929.01	1183.54

2.4 Star Slots

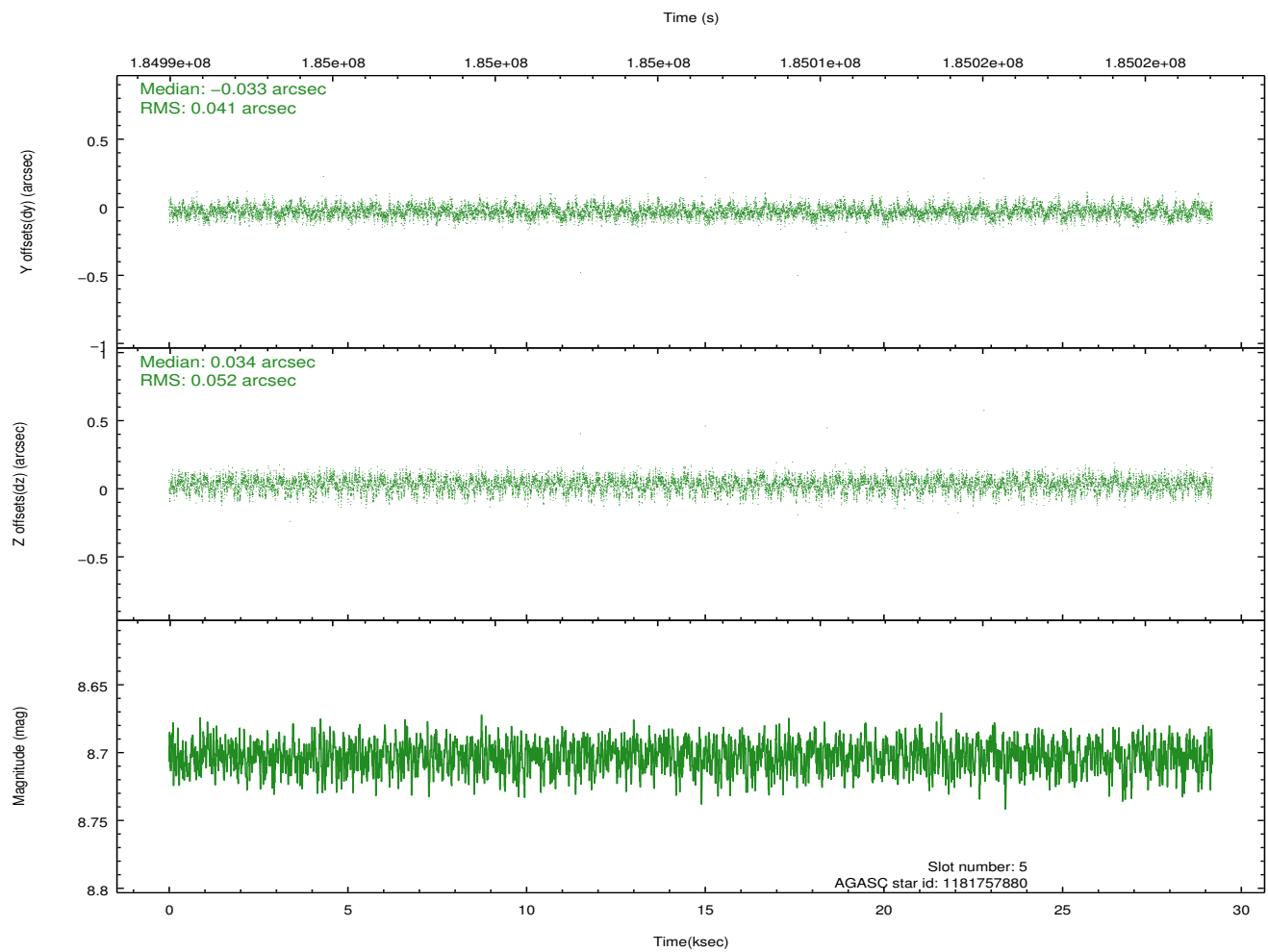
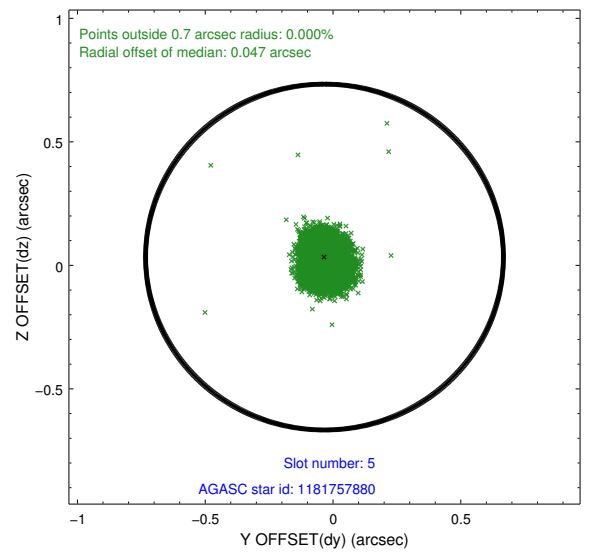
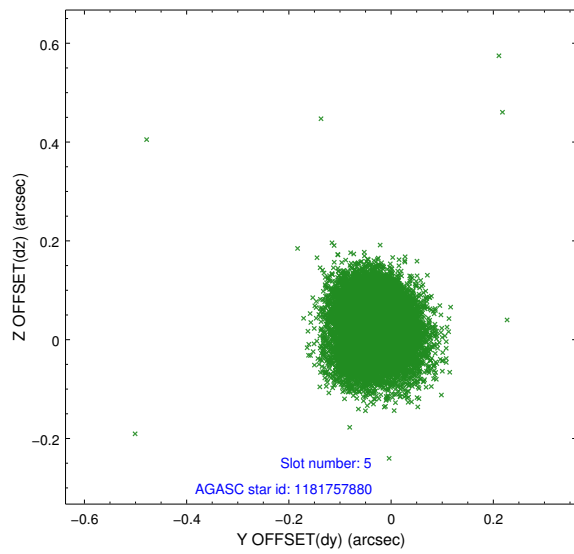
2.4.1 Slot 3



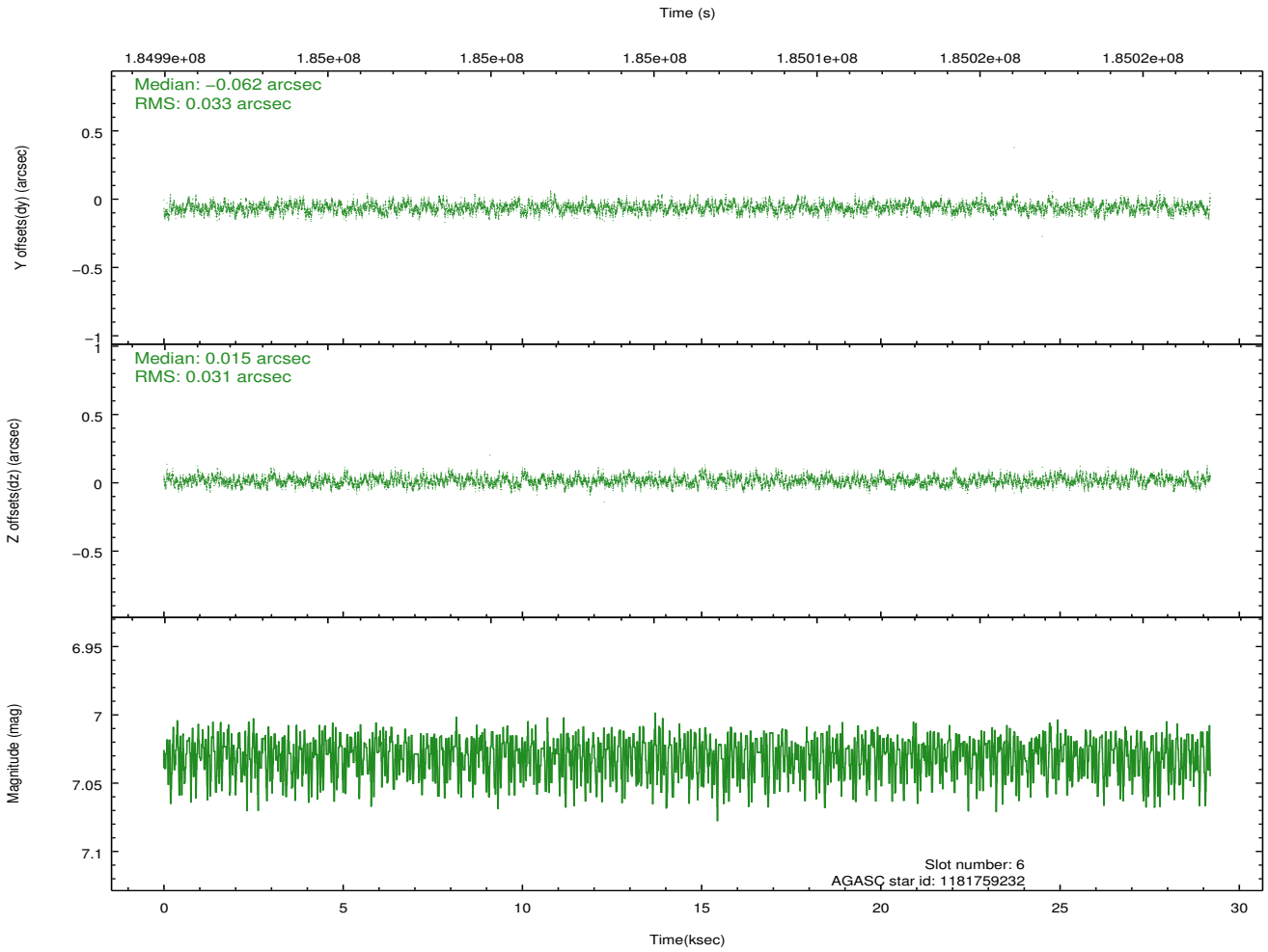
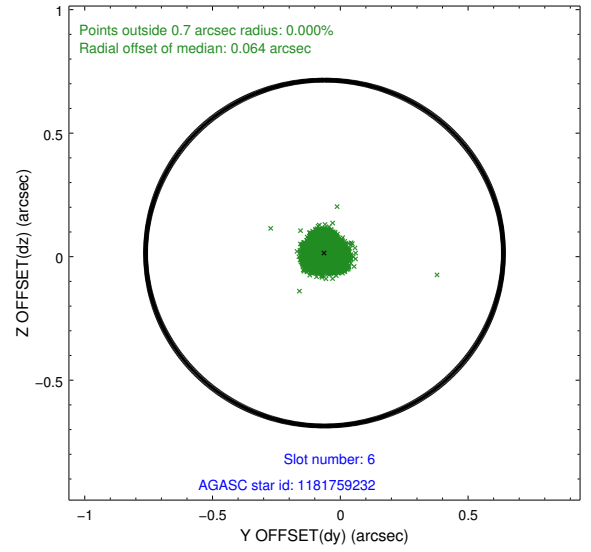
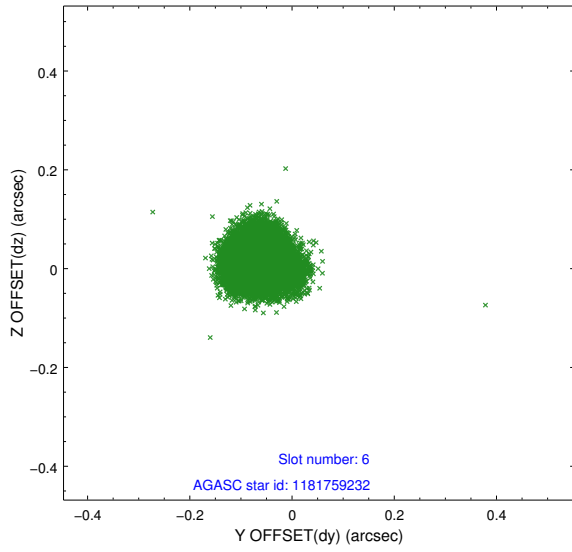
2.4.2 Slot 4



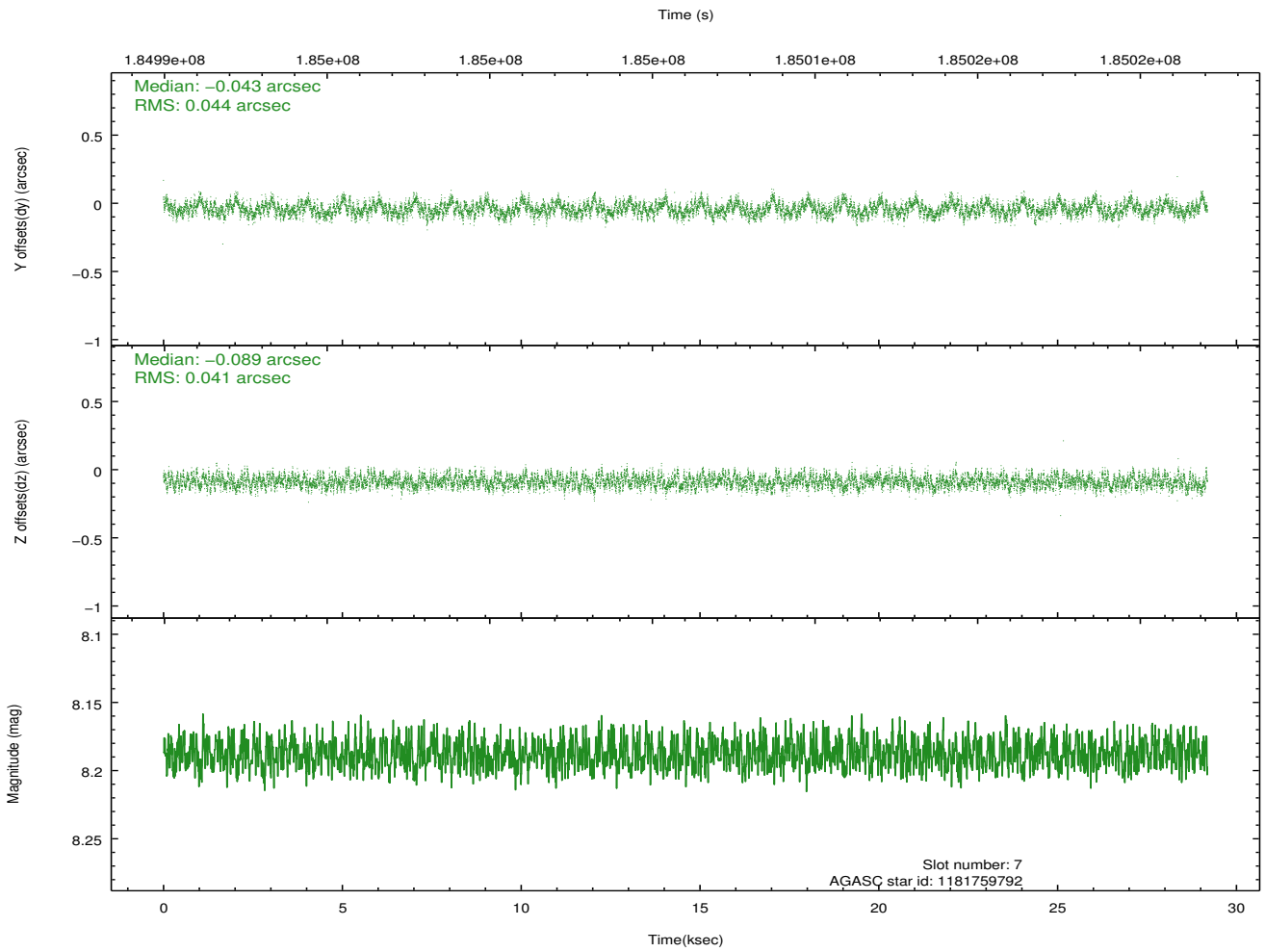
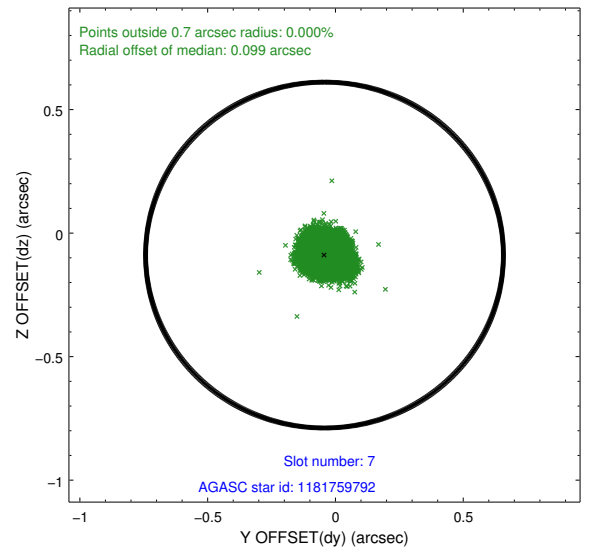
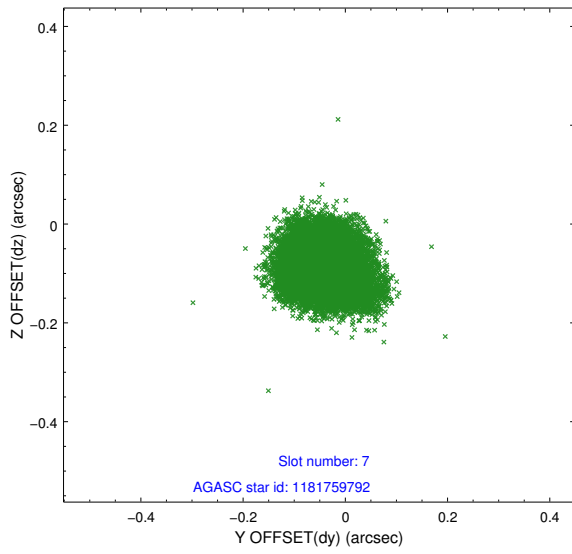
2.4.3 Slot 5



2.4.4 Slot 6

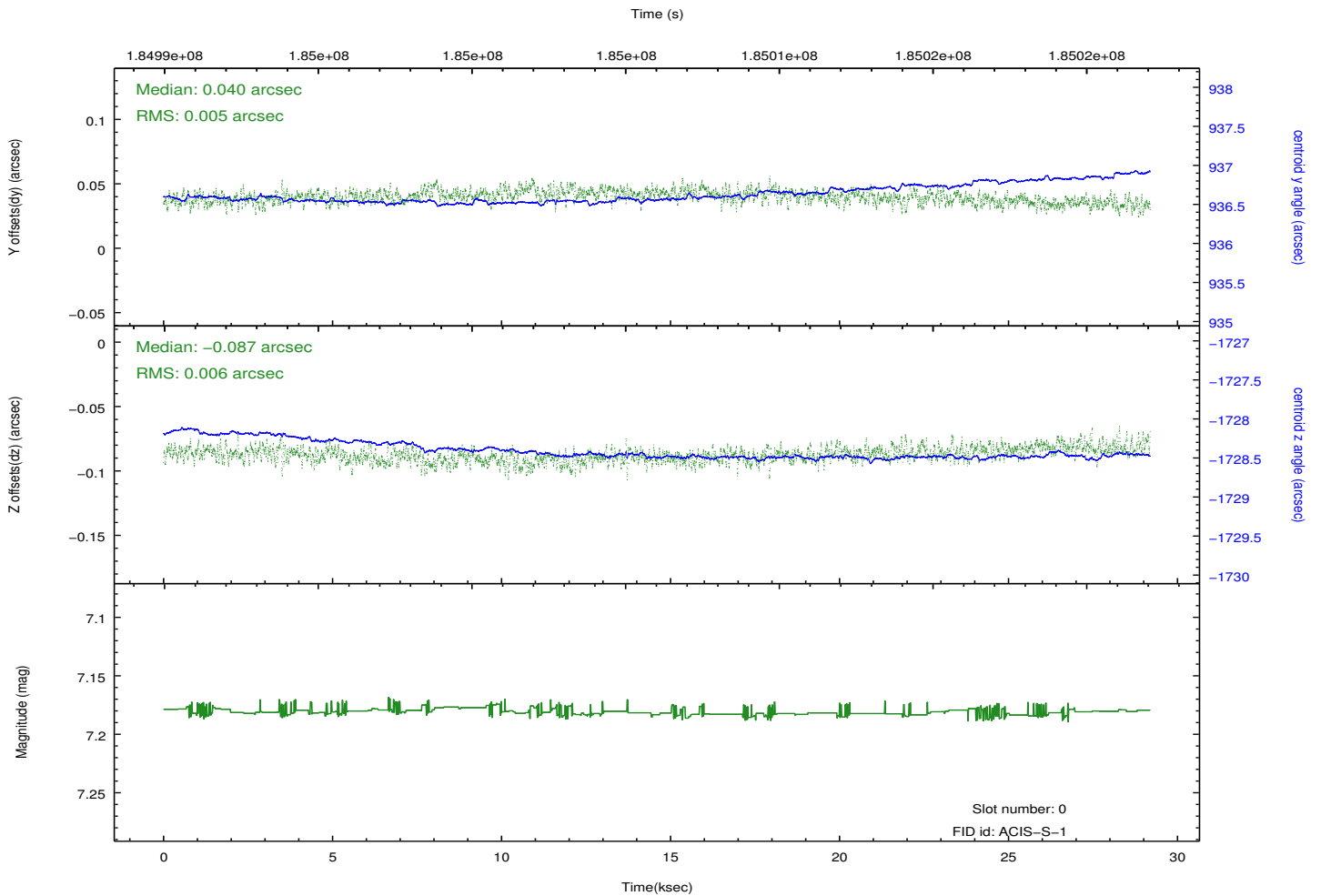
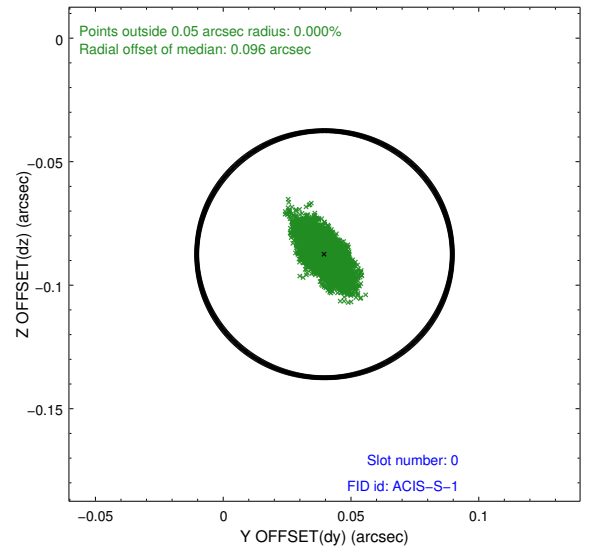
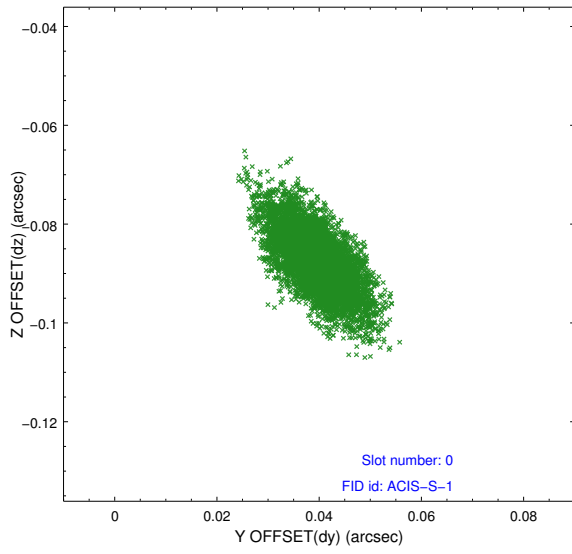


2.4.5 Slot 7

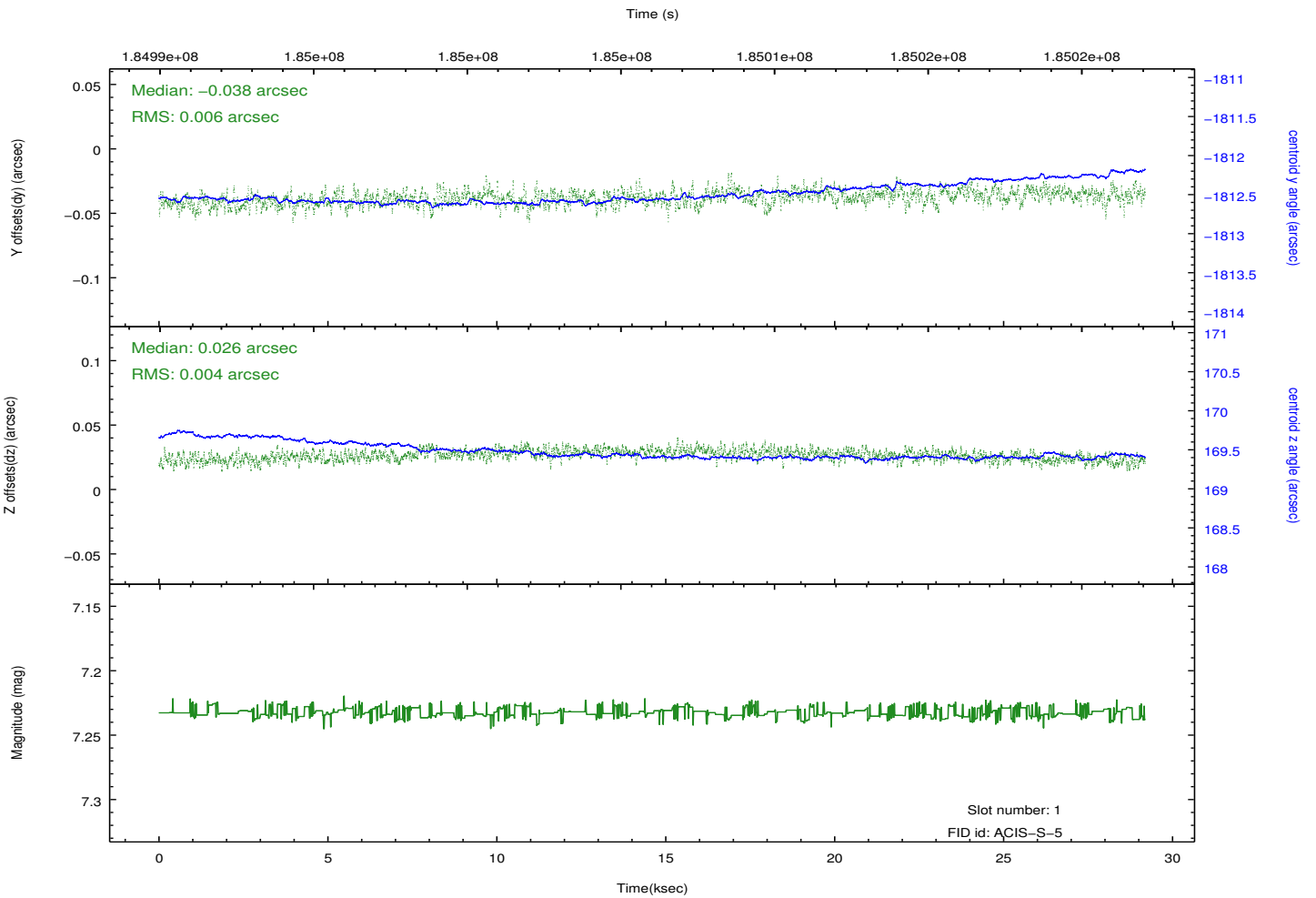
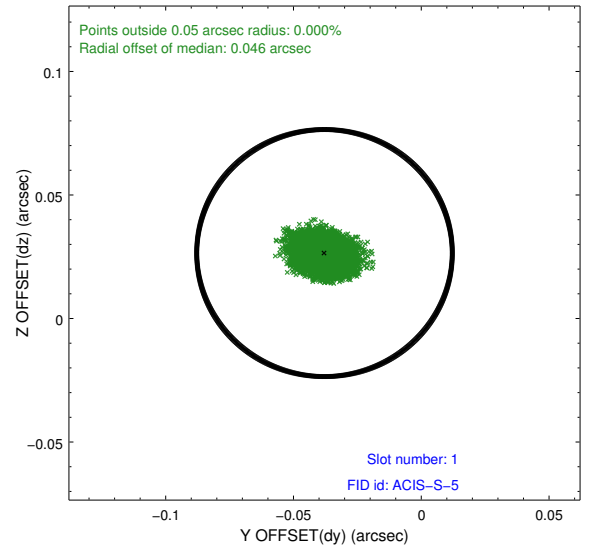
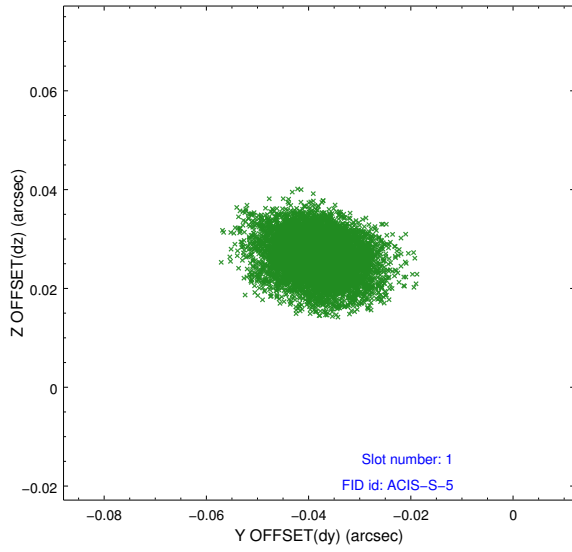


2.5 FID Slots

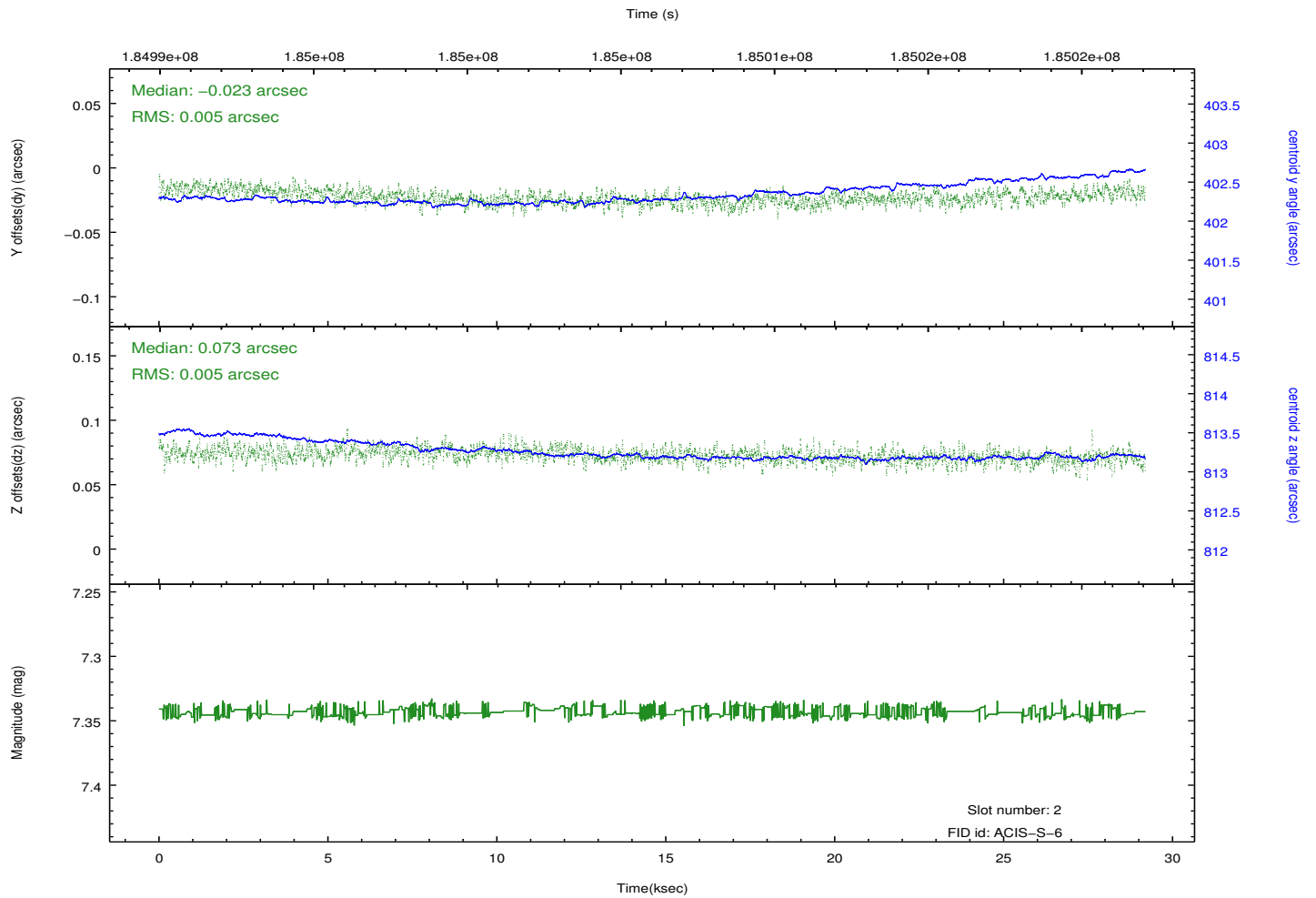
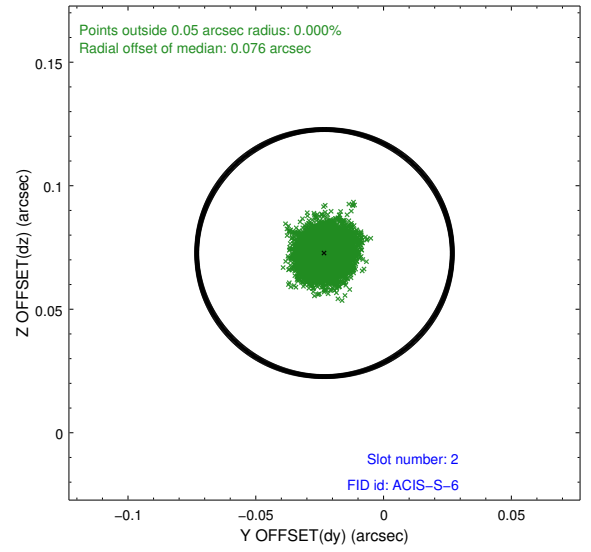
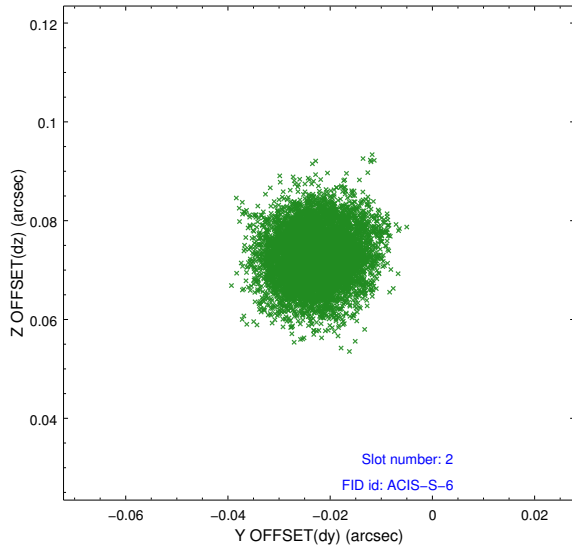
2.5.1 Slot 0



2.5.2 Slot 1



2.5.3 Slot 2



A Summary

A.1 Status

V&V Scientist	Jen Lauer
V&V Date (YYYY-MM-DD)	2012.12.02
V&V Edition	1
V&V Disposition and Status	OK
V&V Charge Time	29.113

A.2 Comments