

V&V Reference Report

L2 ASCDS Version : 8.5

Observation 4490 - L2 Version 3
Chandra X-Ray Center

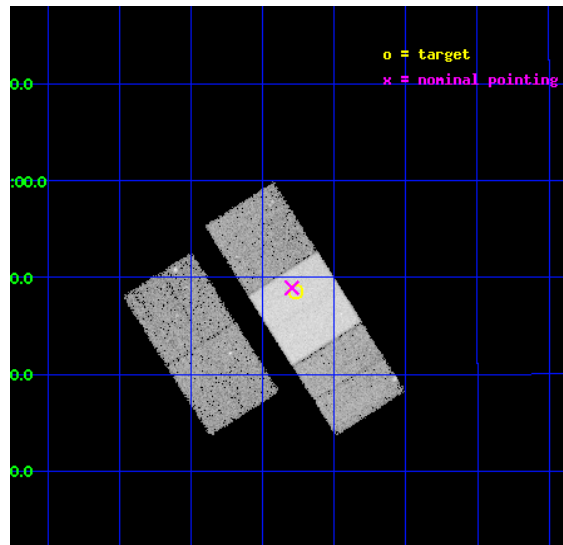
L2 Processing Date : Dec 12 2012

Contents

1	Front	2
2	OBI	3
2.1	OBI	3
2.1.1	Images	3
2.1.2	Bias	3
2.1.3	Parameters	4
2.1.4	Events	4
2.2	Compared Parameters	5
2.3	Aspect	6
2.4	Star Slots	9
2.4.1	Slot 3	9
2.4.2	Slot 4	10
2.4.3	Slot 5	11
2.4.4	Slot 6	12
2.4.5	Slot 7	13
2.5	FID Slots	14
2.5.1	Slot 0	14
2.5.2	Slot 1	15
2.5.3	Slot 2	16
A	Summary	17
A.1	Status	17
A.2	Comments	17

1 Front

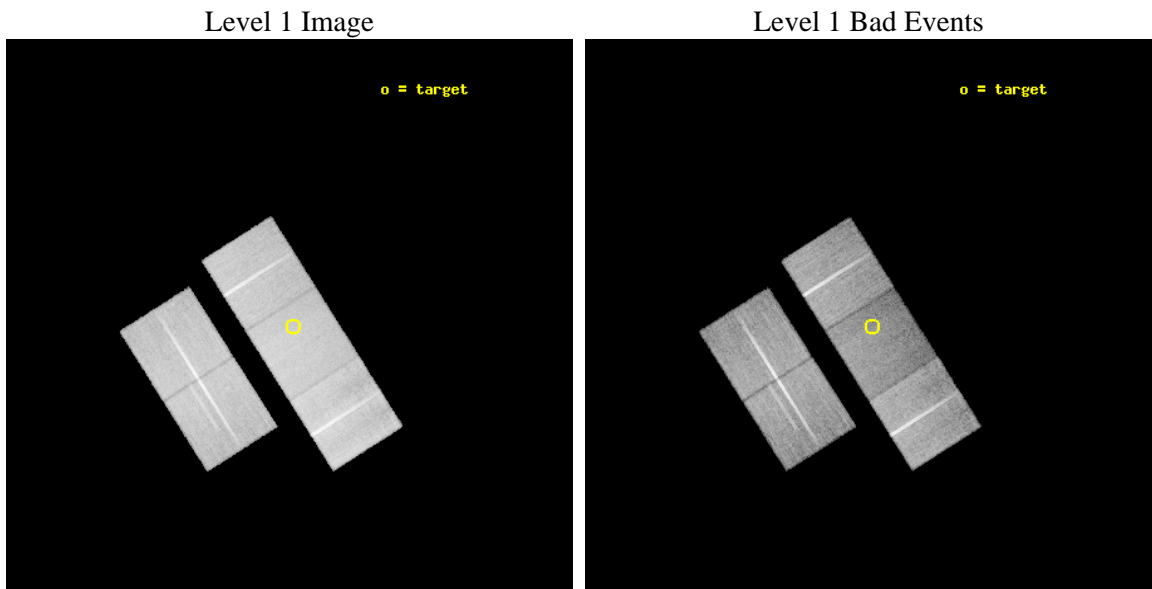
seq_num	200259	Sequence number
obs_id	4490	Observation id
title	SHOCKS AND X-RAYS IN PROTOSTELLAR JETS	Proposal title
observer	Prof. Manuel Guedel	Principal investigator
object	HH111	Source name
dtycycle	0	
cycle	P	events from which exps? Prim/Second/Both
ra_targ	87.9425	Observer's specified target RA [deg]
dec_targ	2.80825	Observer's specified target Dec [deg]
ra_nom	87.94903678219	Nominal RA [deg]
dec_nom	2.8153811086994	Nominal Dec [deg]
roll_nom	57.612865200851	Nominal Roll [deg]
revision	3	Processing version of data
ontime	29177.19994387	Sum of GTIs [s]
livetime	28795.978346662	Livetime [s]
ontime2	29174.058953643	Sum of GTIs [s]
ontime3	29174.058963627	Sum of GTIs [s]
ontime6	29177.19994387	Sum of GTIs [s]
ontime7	29177.19994387	Sum of GTIs [s]
ontime8	29174.058953613	Sum of GTIs [s]
l2events	156995	Number of level 2 events



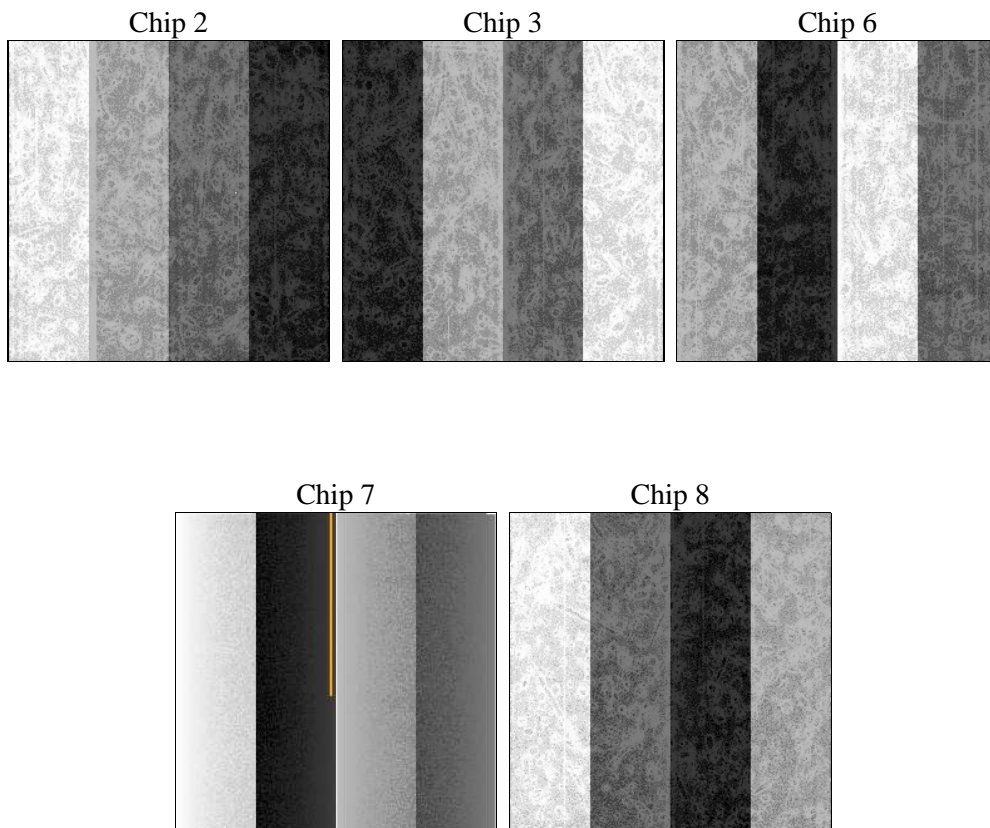
2 OBI

2.1 OBI

2.1.1 Images



2.1.2 Bias



2.1.3 Parameters

obi_num	1	Obi number	sched_exp_time	29000.000000	[s] Scheduled observation exposure time
ascdsver	8.5	Processing system revision	ontime	29177.19994387	Sum of GTIs [s]
caldbver	4.5.4	 	ontime2	29174.058953643	Sum of GTIs [s]
date	2012-12-11T23:06:35	Date and time of file creation	ontime3	29174.058963627	Sum of GTIs [s]
revision	3	Processing version of data	ontime6	29177.19994387	Sum of GTIs [s]
			ontime7	29177.19994387	Sum of GTIs [s]
			ontime8	29174.058953613	Sum of GTIs [s]
			l1events	1028086	Number of level 1 events

2.1.4 Events

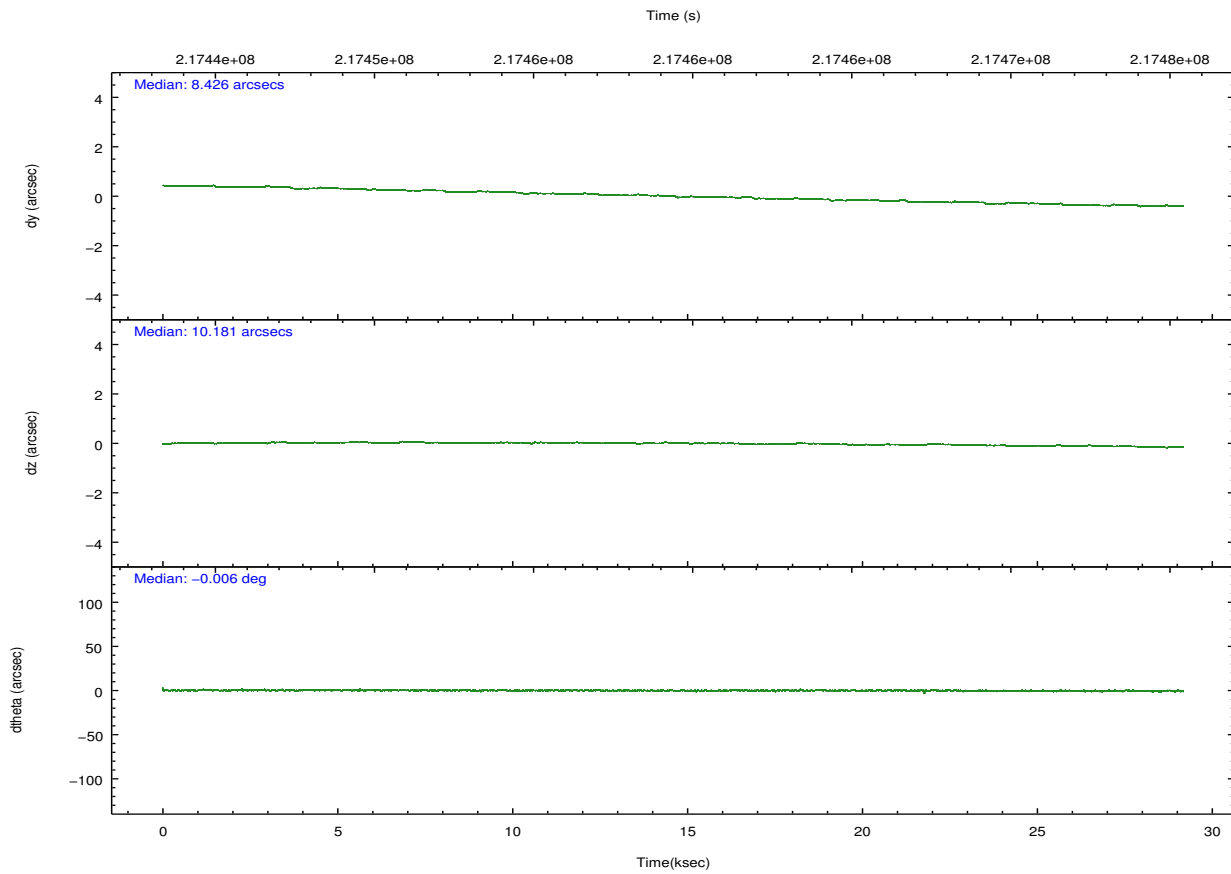
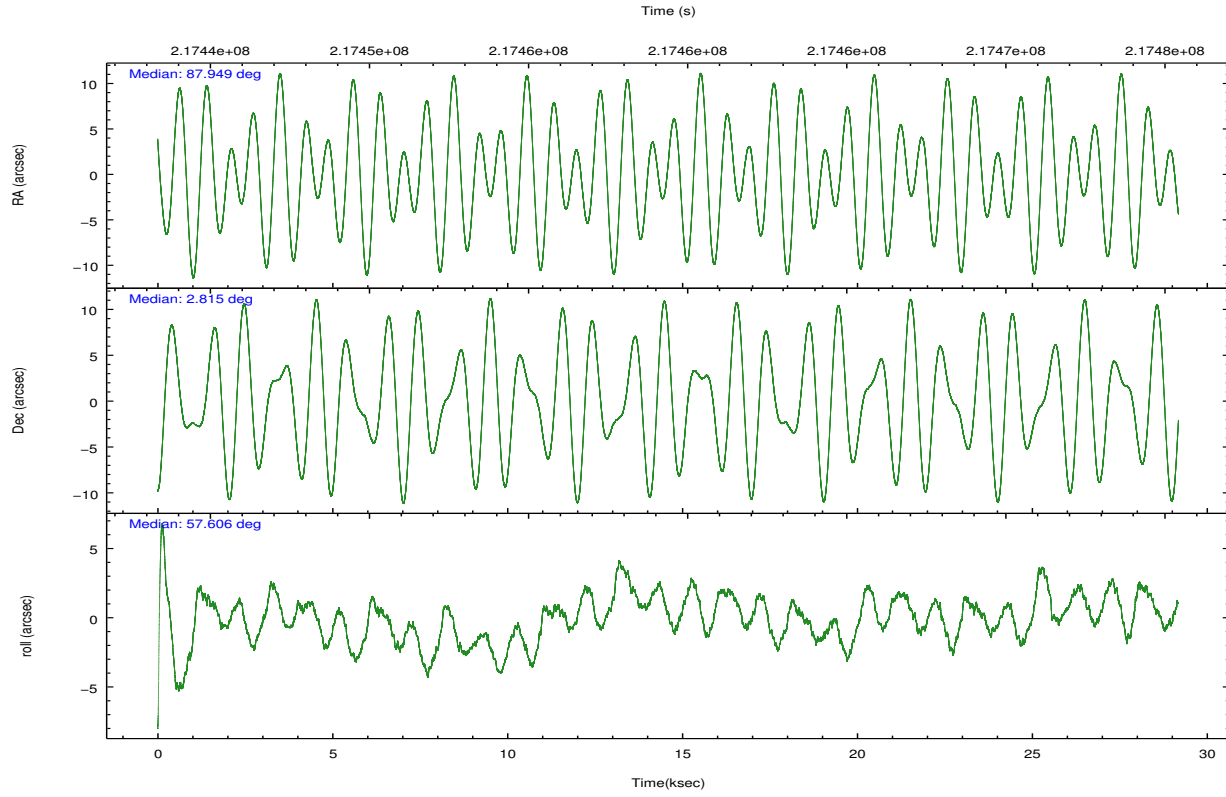
	ccd 2	ccd 3	ccd 6	ccd 7	ccd 8
level 1 events	192523	190350	192962	208278	243973
rejected events	174797	173122	174053	114756	189047
rejected %	90%	90%	90%	55%	77%

	ccd 2	ccd 3	ccd 6	ccd 7	ccd 8
grade 0 events	6428	5899	6445	7954	16405
	3%	3%	3%	3%	6%
grade 1 events	86	83	89	193	181
	0%	0%	0%	0%	0%
grade 2 events	4082	3689	4108	18710	12156
	2%	1%	2%	8%	4%
grade 3 events	1990	1988	2185	8748	6002
	1%	1%	1%	4%	2%
grade 4 events	2060	2086	2116	8842	5521
	1%	1%	1%	4%	2%
grade 5 events	6110	7309	7727	22062	10702
	3%	3%	4%	10%	4%
grade 6 events	3205	3604	4094	49483	15032
	1%	1%	2%	23%	6%
grade 7 events	168562	165692	166198	92286	177974
	87%	87%	86%	44%	72%

2.2 Compared Parameters

Parameter	Planned	Actual	Parameter	Planned	Actual
Instrument	ACIS	ACIS	Obspar format version number	7	7
Detector	ACIS-23678	ACIS-23678	Obspar file type	PREDICTED	ACTUAL
Grating	NONE	NONE	Obspar update status	NONE	UPDATED
Data mode	VFAINT	VFAINT	Number of optional ACIS chips dropped	0	0
Observation mode	POINTING	POINTING	On-chip summing requested	N	N
[deg] Pointing RA	87.948271	87.94903678219023	Subarray requested	NONE	NONE
[deg] Pointing Dec	2.788162	2.815381108699399	Alternating exposures requested	N	N
[deg] Pointing Roll	57.456273	57.61286520085067	[s] Primary exposure time	0.000000	3.1
[mm] SIM focus pos	-0.684267	-0.6828225247311905			
[mm] SIM defocus	0	0.001444936568705701			
[mm] SIM translation stage pos	-190.132523	-190.1425803651734			
[mm] SIM translation stage offset	0	0.01005778216563158			
[s] Observation start time (MET)	217444976.184000	217443950.16787			
Observation start date	2004-11-21T17:21:52	2004-11-21T17:05:50			
[s] Observation end time (MET)	217473976.184000	217474602.79425			
Observation end date	2004-11-22T01:25:12	2004-11-22T01:36:42			
Read mode	TIMED	TIMED			

2.3 Aspect

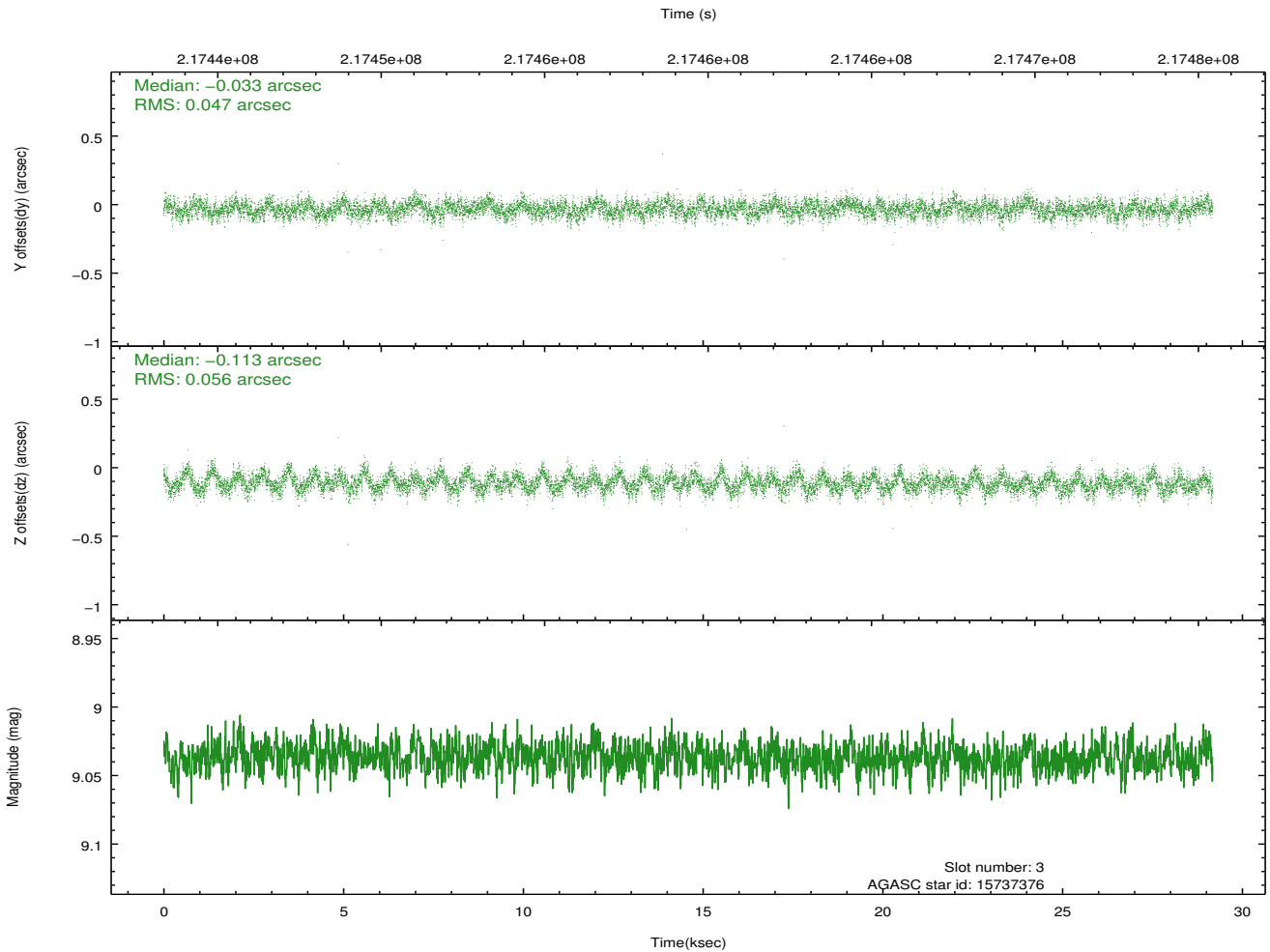
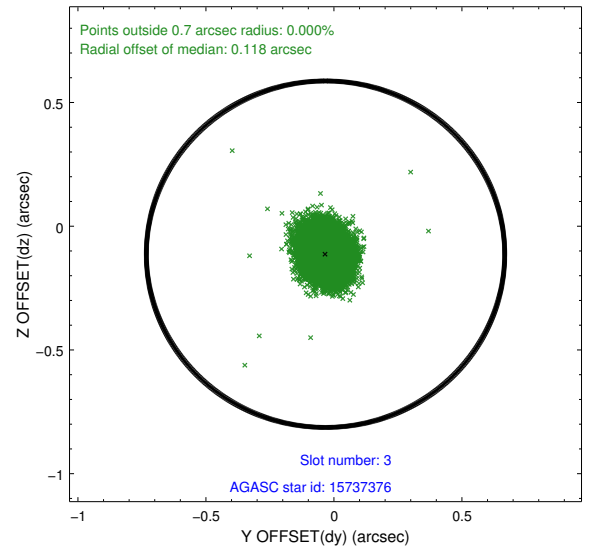
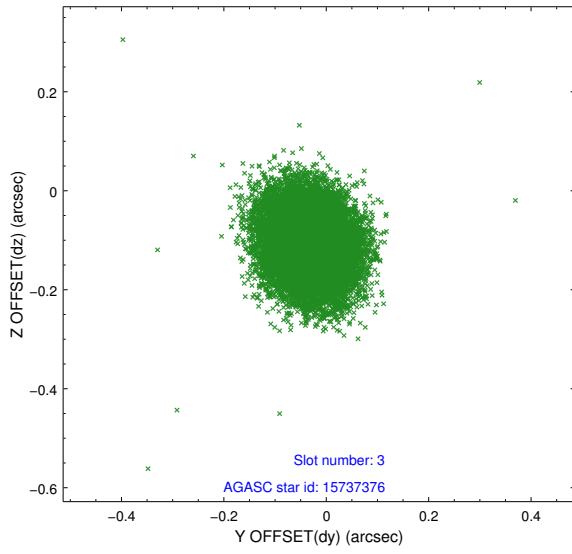


Slot Statistics

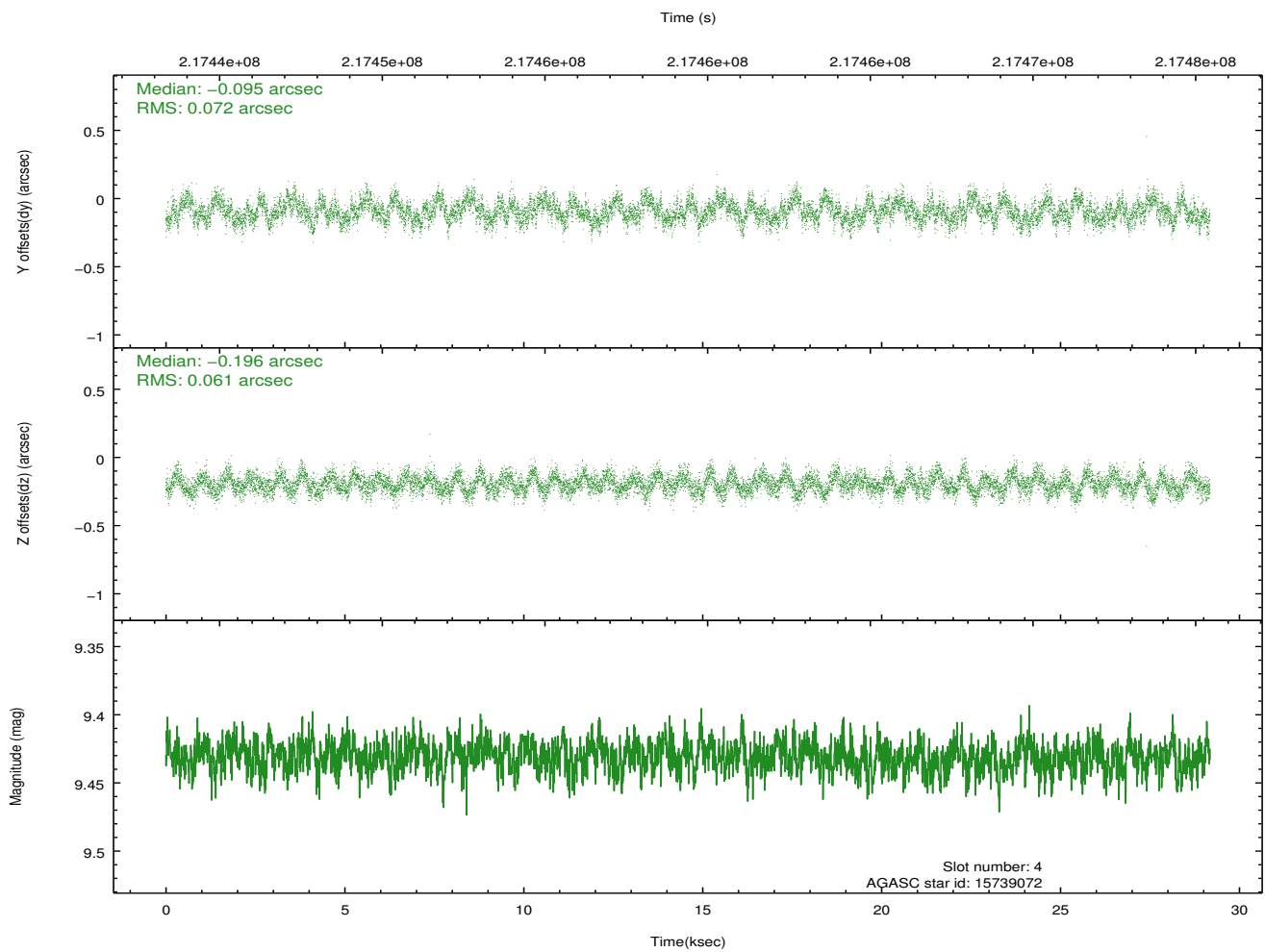
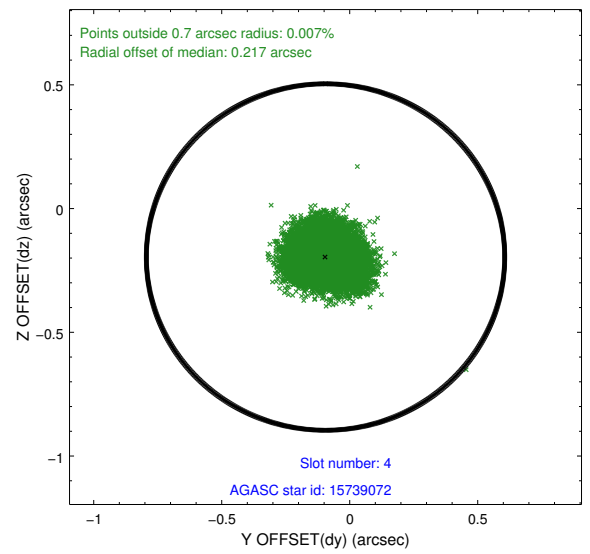
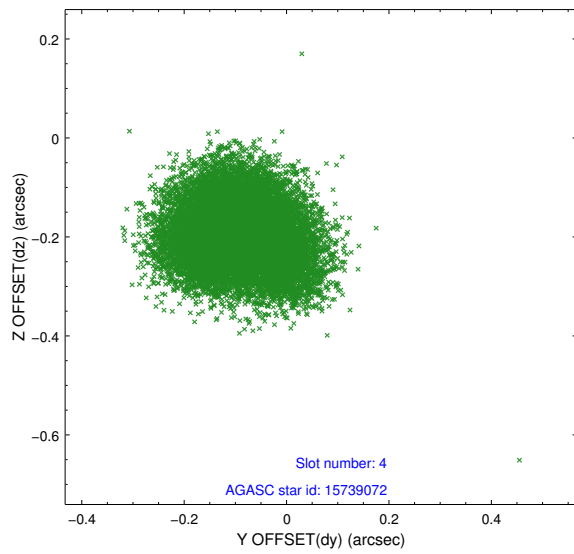
slot	status	id	mag	n_pts	med_dy	med_dz	dr1	dr2	ra	dec	mean_y	mean_z
0	FID	ACIS-S-1	7.19	7117	0.043	-0.039	0.007	0.012	0.000000	0.000000	934.87	-1727.02
1	FID	ACIS-S-5	7.24	7118	-0.107	0.022	0.014	0.021	0.000000	0.000000	-1814.24	170.50
2	FID	ACIS-S-6	7.35	7117	0.041	0.029	0.014	0.021	0.000000	0.000000	400.32	814.57
3	GUIDE	15737376	9.04	14231	-0.033	-0.113	0.077	0.125	87.780635	3.502000	1842.56	1890.40
4	GUIDE	15739072	9.43	14227	-0.095	-0.196	0.101	0.160	87.795739	3.450449	1715.37	1744.86
5	GUIDE	15860064	9.31	14230	0.109	0.076	0.102	0.162	88.180470	2.417450	-674.83	-1421.69
6	GUIDE	15860696	8.43	14228	0.029	0.066	0.063	0.100	88.242141	3.048017	1357.21	-387.50
7	GUIDE	15860168	8.26	14229	-0.016	0.164	0.068	0.105	88.277505	2.831756	769.80	-913.31

2.4 Star Slots

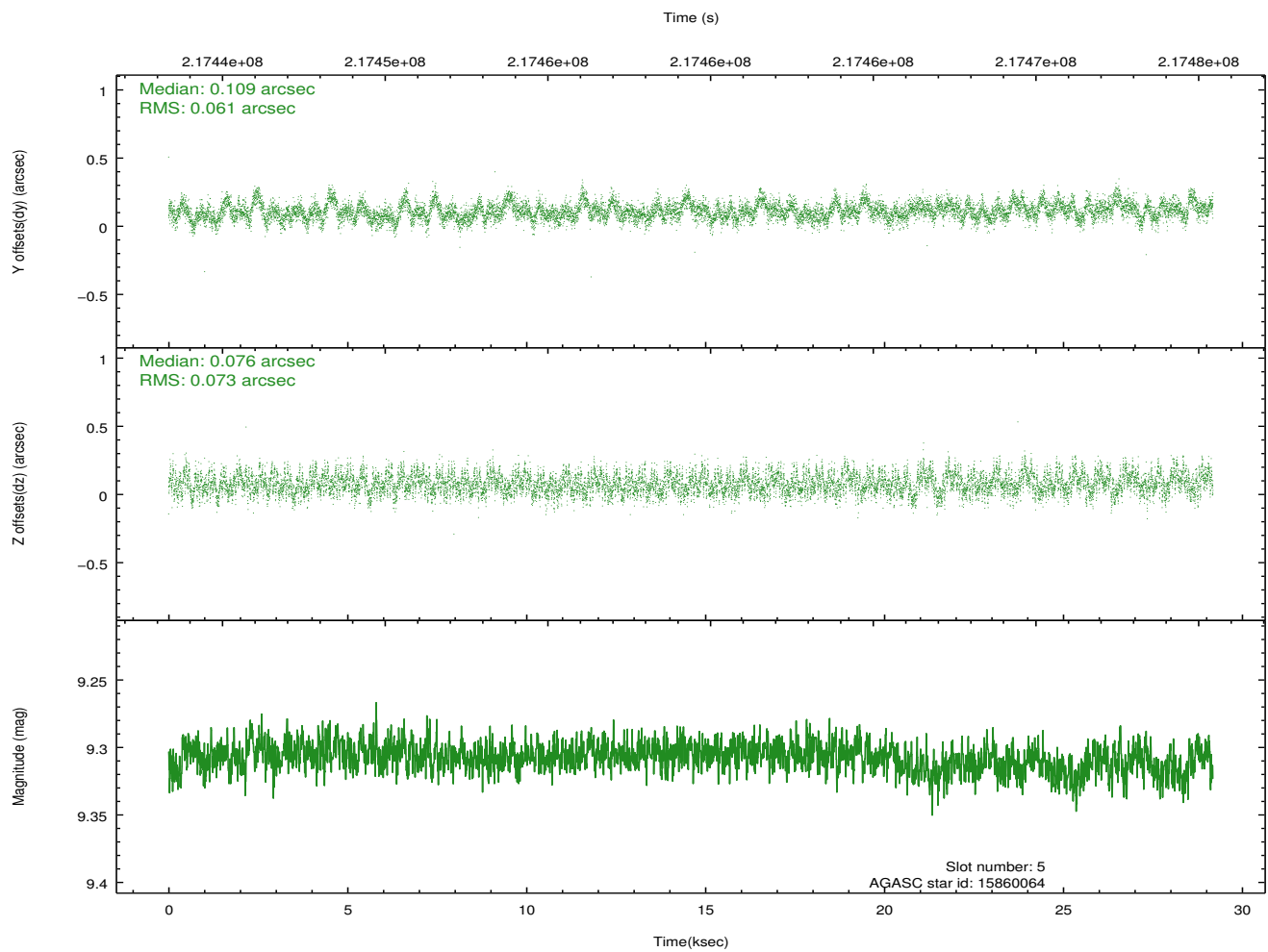
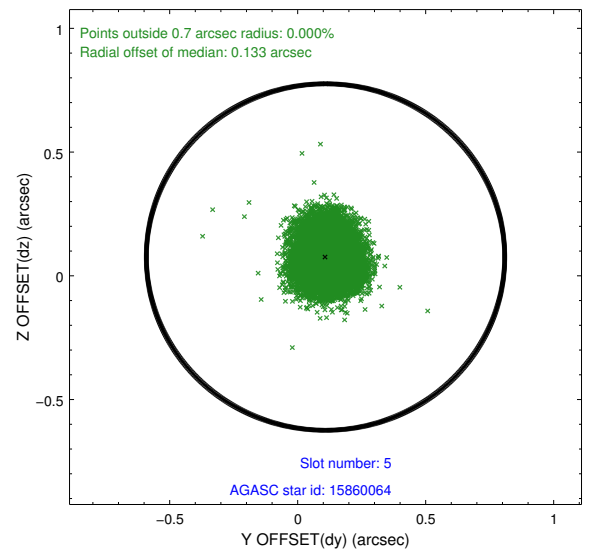
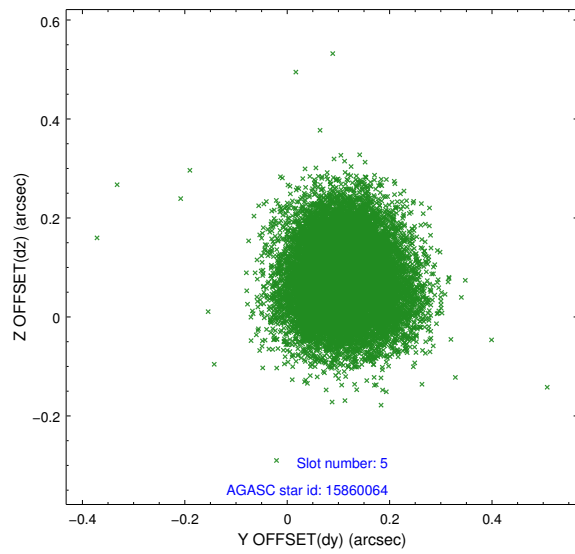
2.4.1 Slot 3



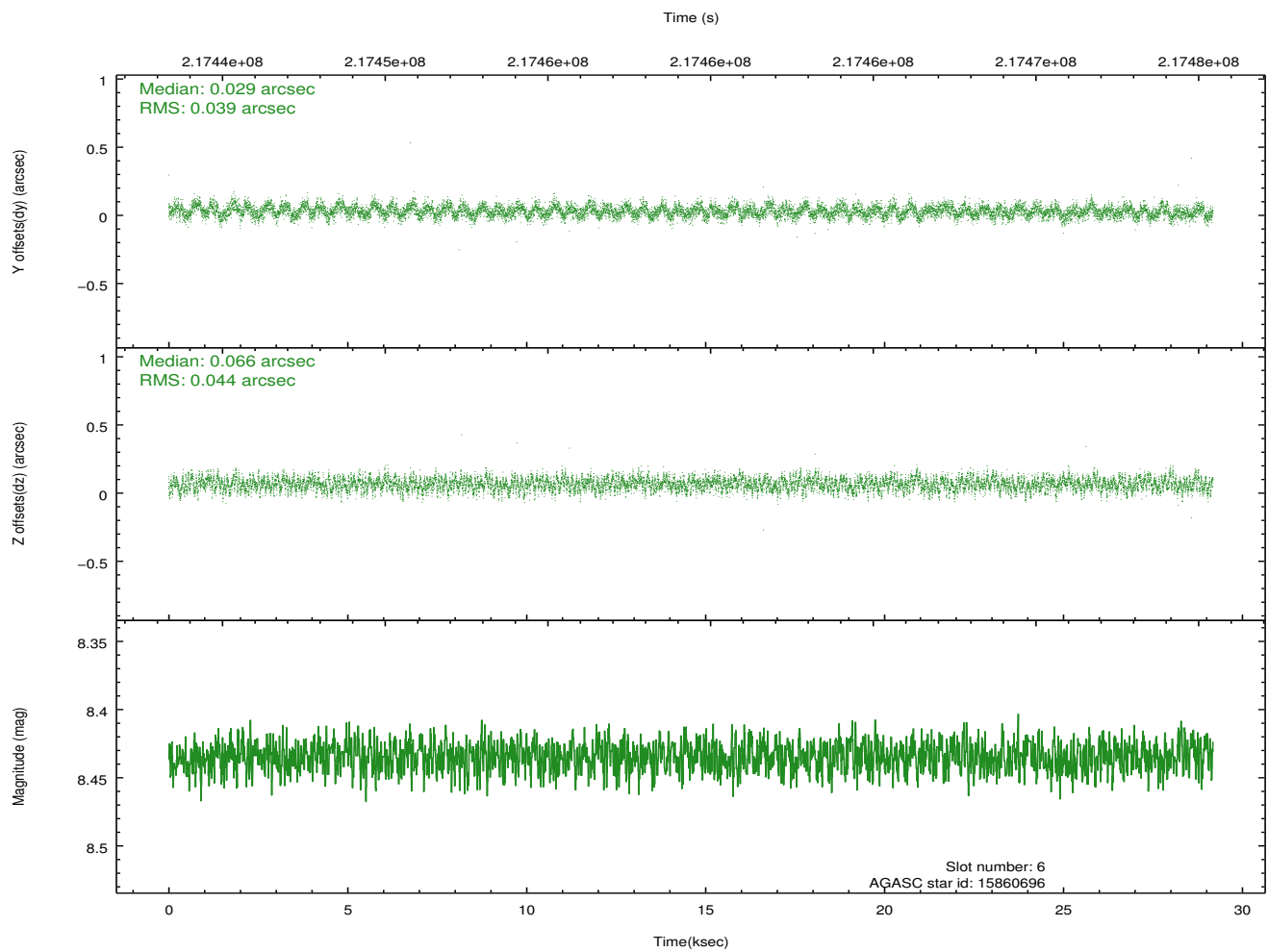
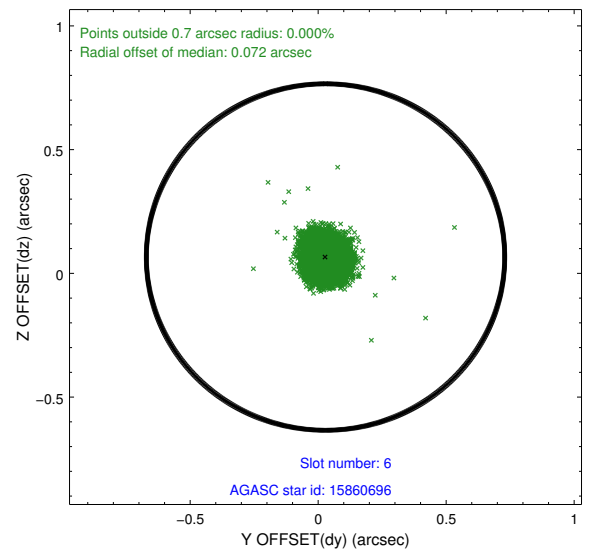
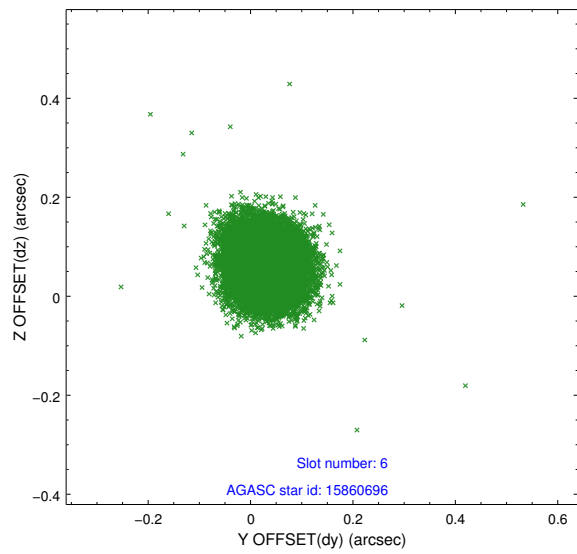
2.4.2 Slot 4



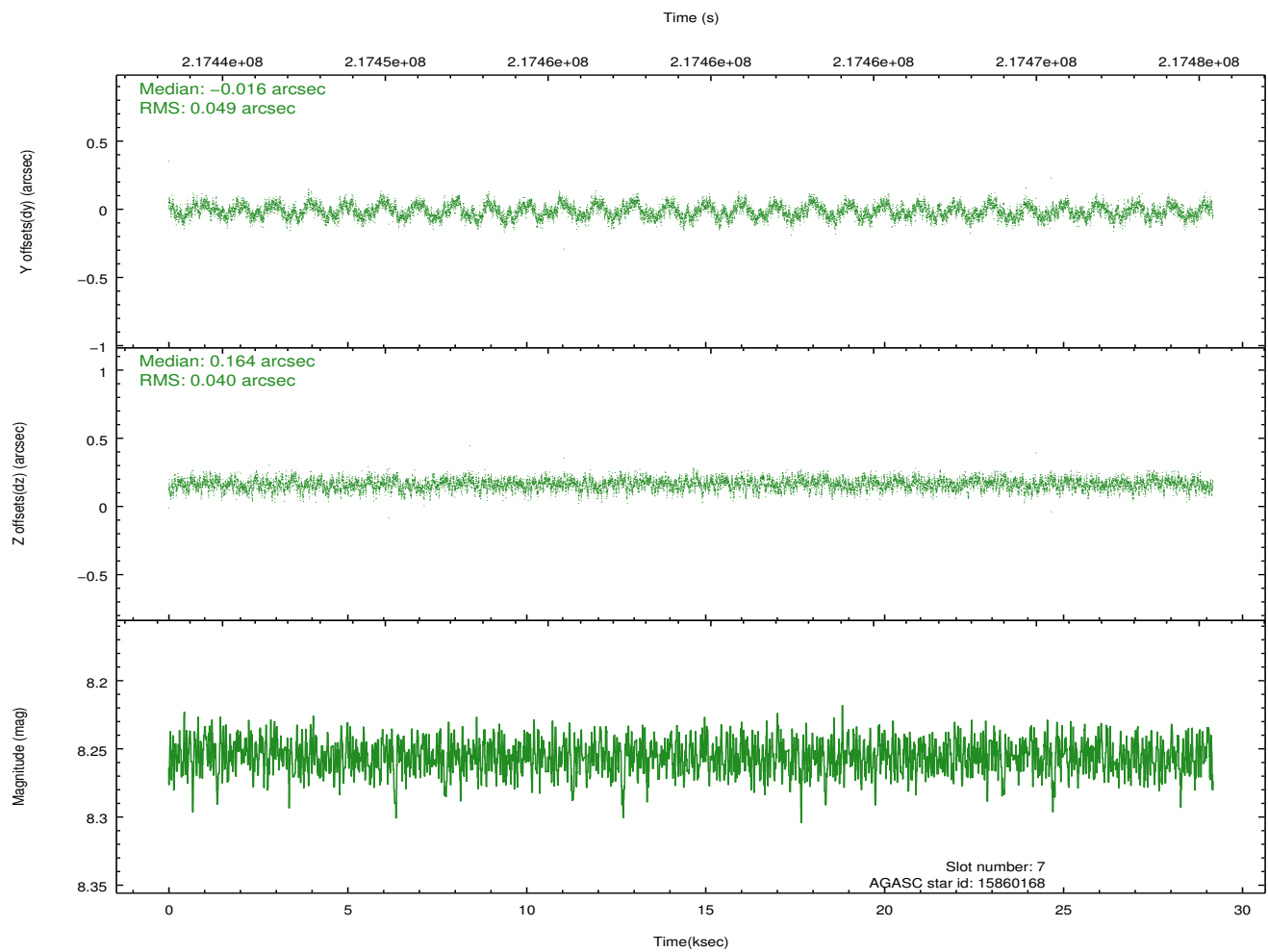
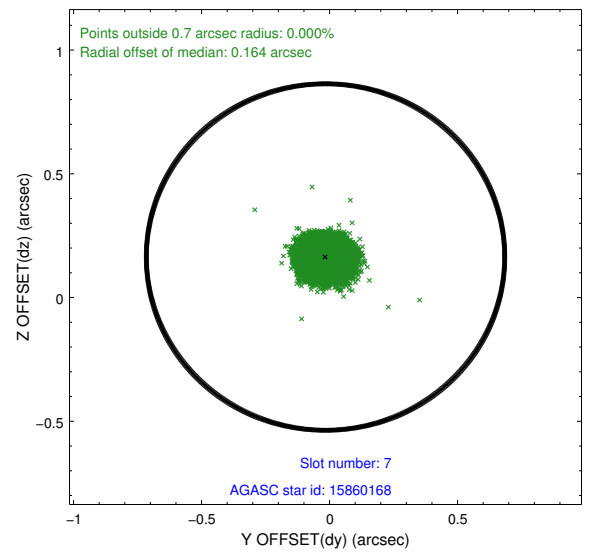
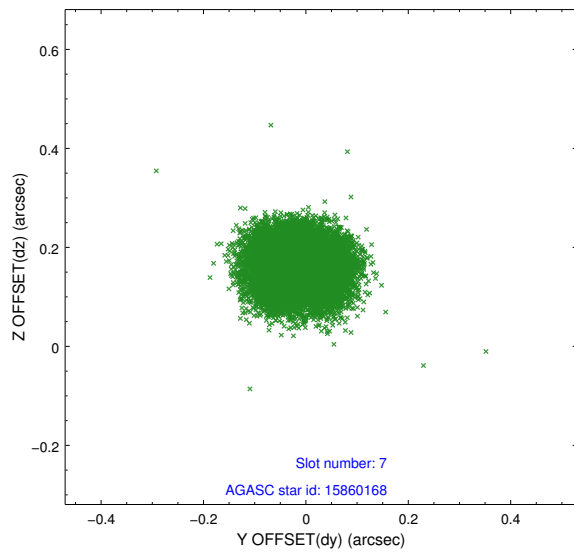
2.4.3 Slot 5



2.4.4 Slot 6

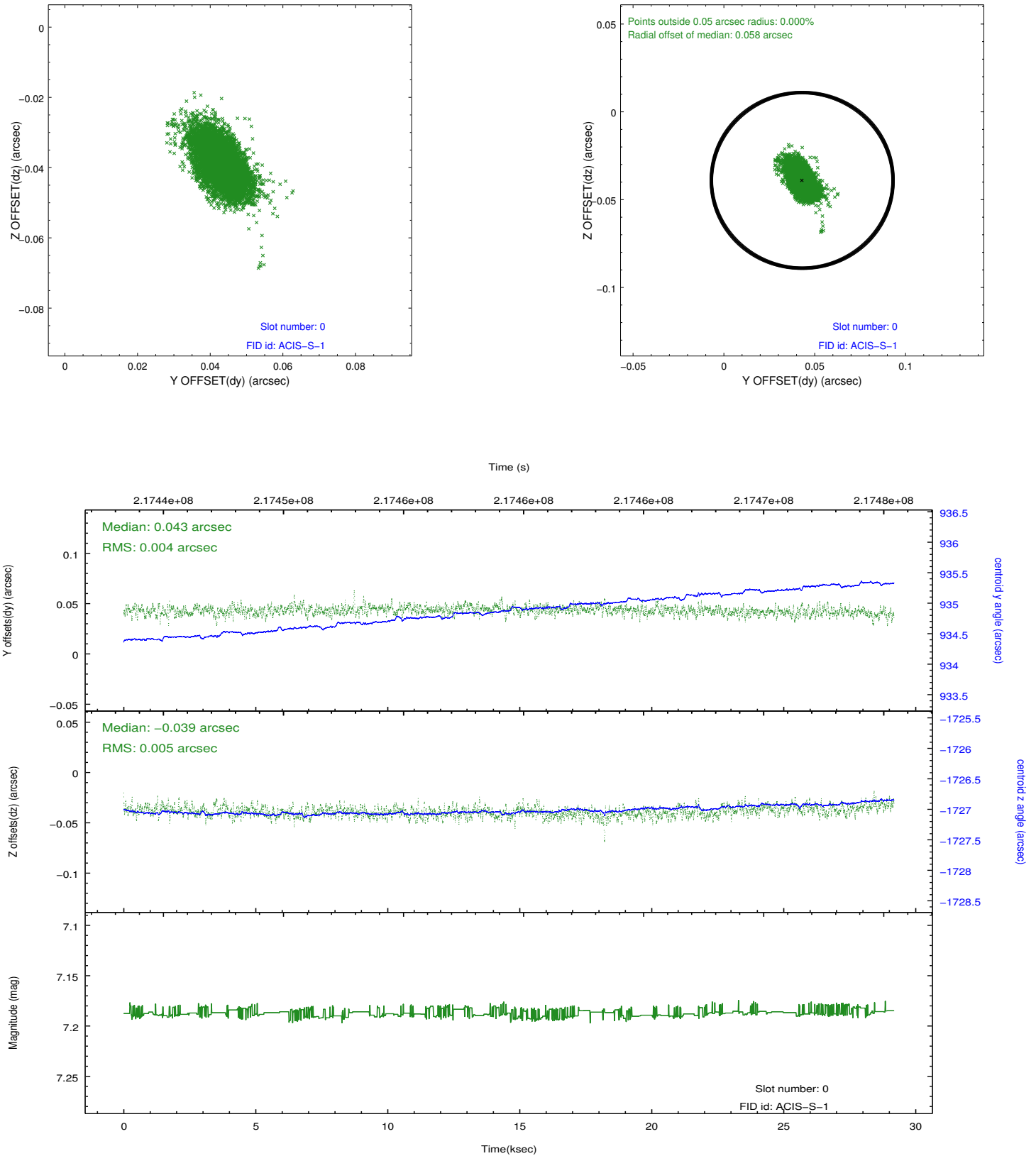


2.4.5 Slot 7

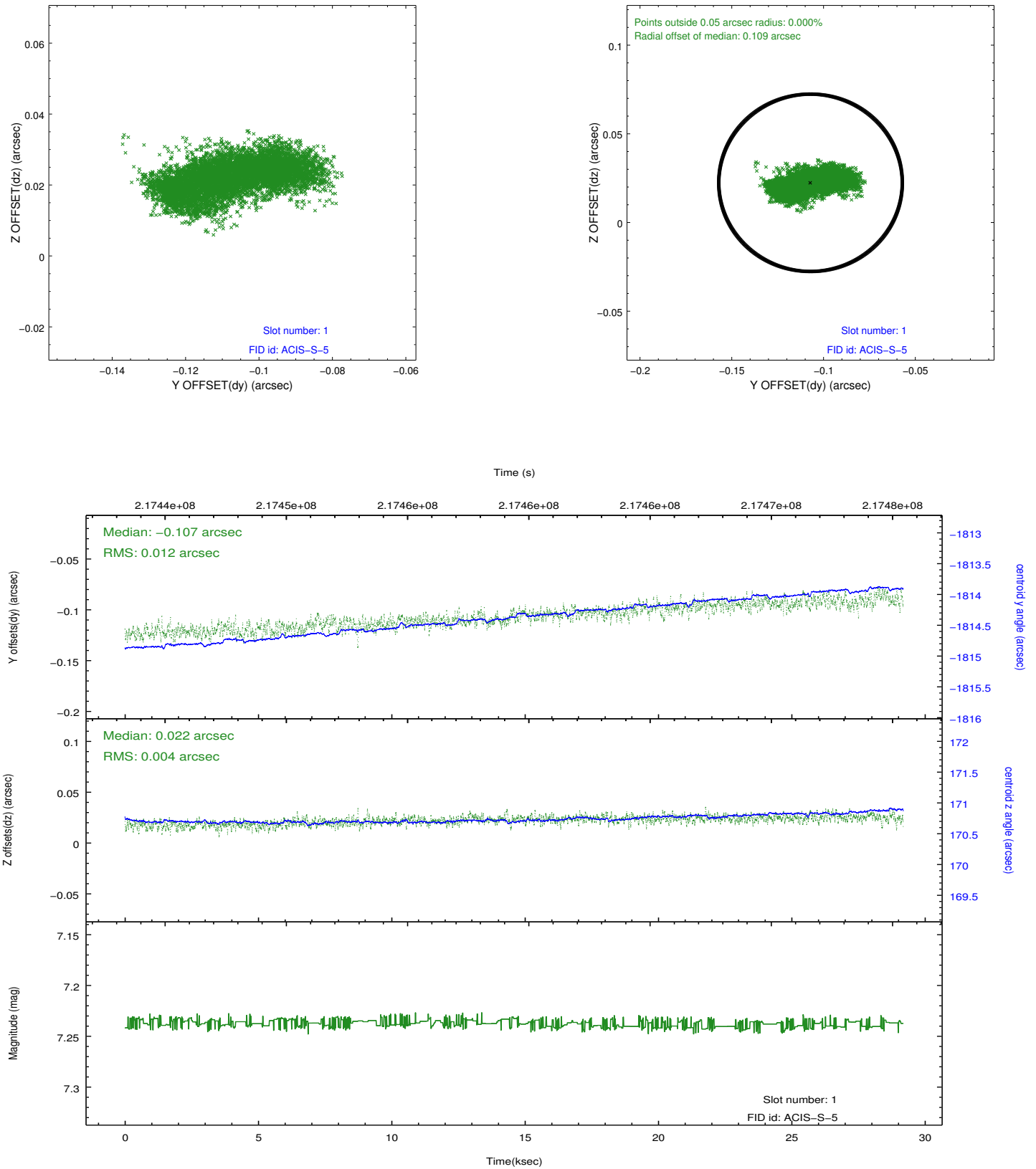


2.5 FID Slots

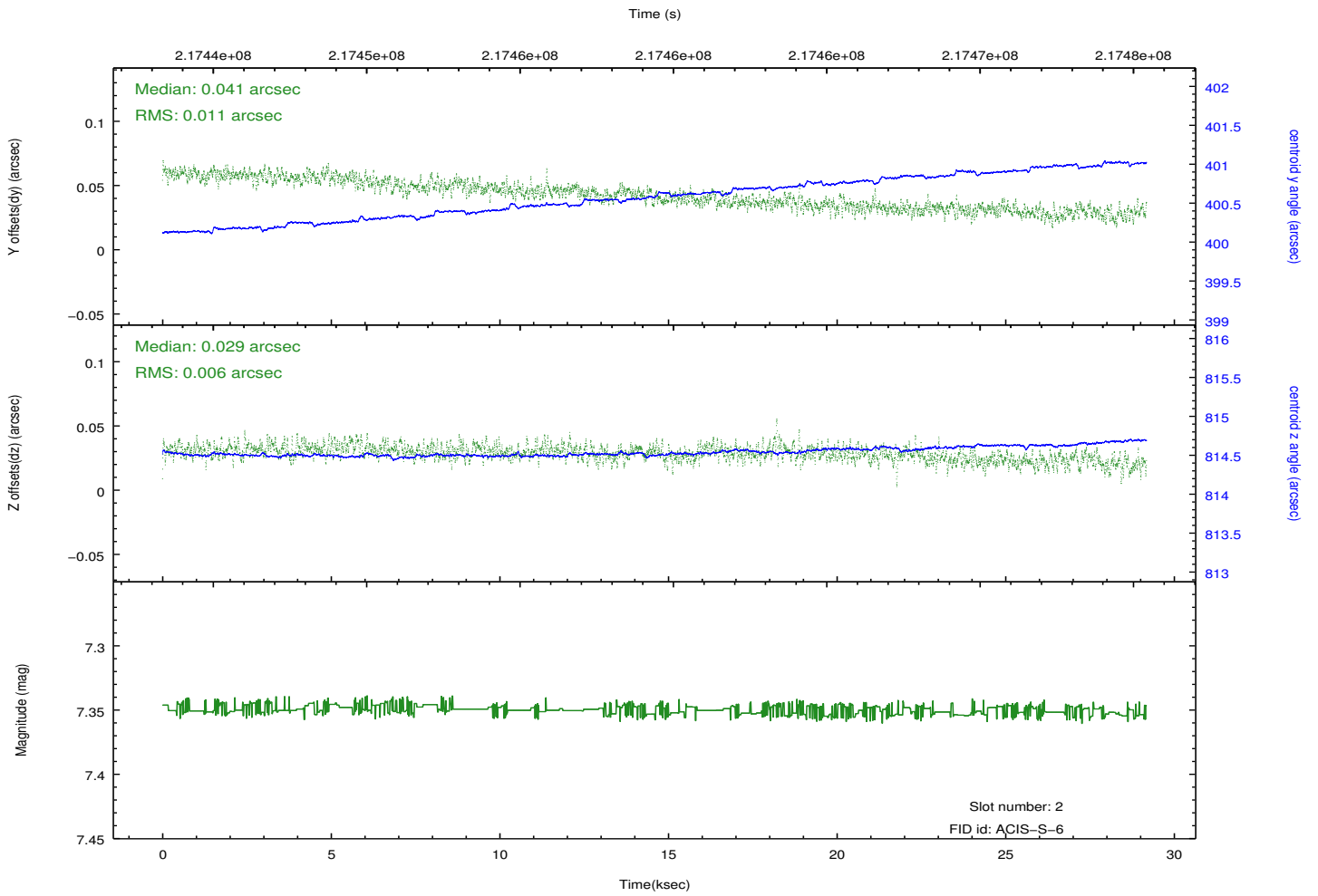
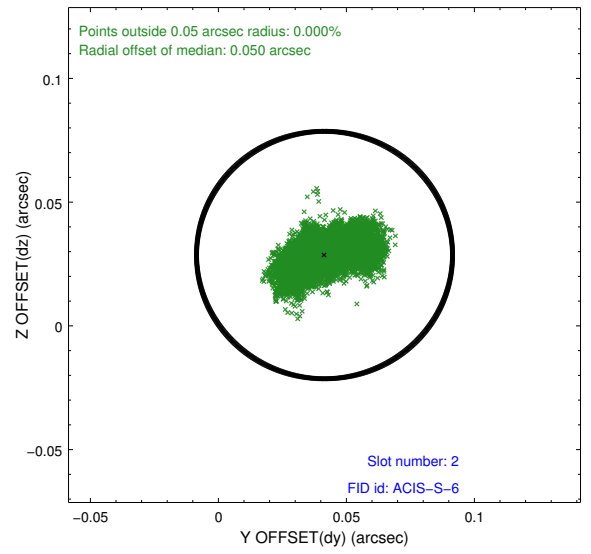
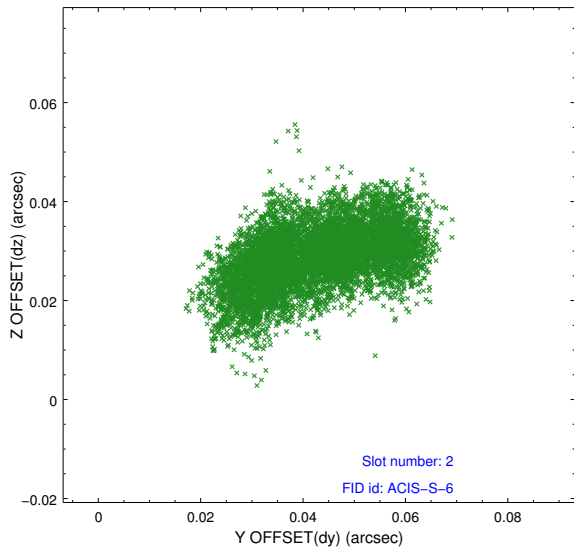
2.5.1 Slot 0



2.5.2 Slot 1



2.5.3 Slot 2



A Summary

A.1 Status

V&V Scientist	Jen Lauer
V&V Date (YYYY-MM-DD)	2013.01.02
V&V Edition	1
V&V Disposition and Status	OK
V&V Charge Time	29.177

A.2 Comments