

# V&V Reference Report

## L2 ASCDS Version : 8.4.5

Observation 4660 - L2 Version 3  
Chandra X-Ray Center

L2 Processing Date : Dec 3 2012

## Contents

<b>1</b>	<b>Front</b>	<b>2</b>
<b>2</b>	<b>OBI</b>	<b>3</b>
2.1	OBI . . . . .	3
2.1.1	Images . . . . .	3
2.1.2	Bias . . . . .	3
2.1.3	Parameters . . . . .	4
2.1.4	Events . . . . .	4
2.2	Compared Parameters . . . . .	5
2.3	Aspect . . . . .	6
2.4	Star Slots . . . . .	9
2.4.1	Slot 3 . . . . .	9
2.4.2	Slot 4 . . . . .	10
2.4.3	Slot 5 . . . . .	11
2.4.4	Slot 6 . . . . .	12
2.4.5	Slot 7 . . . . .	13
2.5	FID Slots . . . . .	14
2.5.1	Slot 0 . . . . .	14
2.5.2	Slot 1 . . . . .	15
2.5.3	Slot 2 . . . . .	16
<b>A</b>	<b>Summary</b>	<b>17</b>
A.1	Status . . . . .	17
A.2	Comments . . . . .	17

# 1 Front

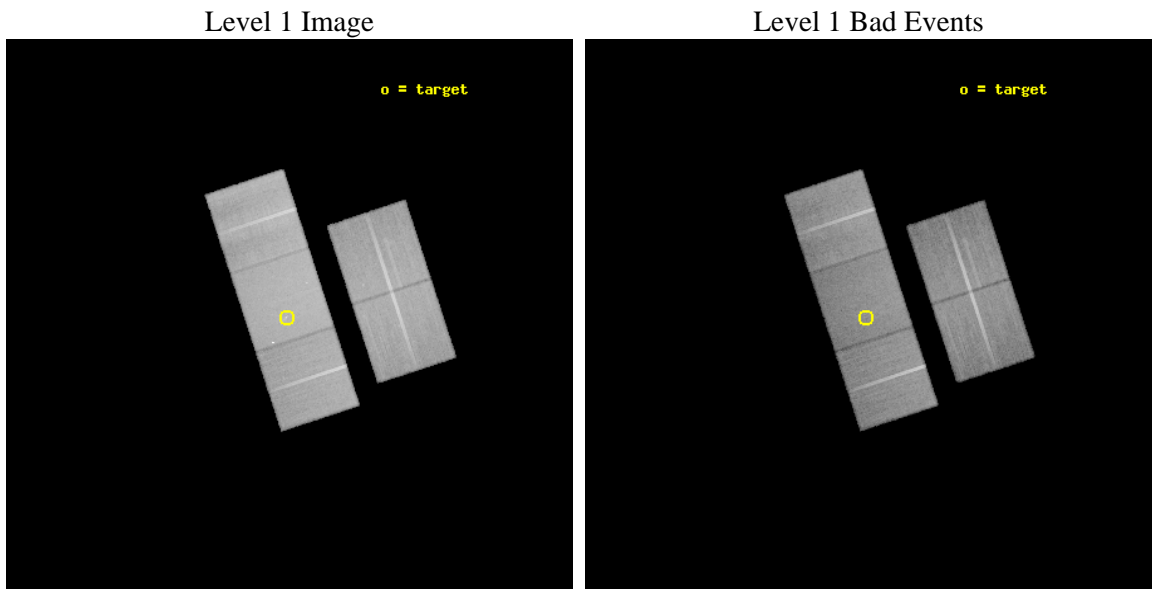
seq_num	500479	Sequence number
obs_id	4660	Observation id
title	In-depth Study of the Nearest Collapsars	Proposal title
observer	Prof. Shrinivas Kulkarni	Principal investigator
object	SN2004C	Source name
dtcycle	0	&#160
cycle	P	events from which exps? Prim/Second/Both
ra_targ	171.87375	Observer's specified target RA [deg]
dec_targ	56.880028	Observer's specified target Dec [deg]
ra_nom	171.86538042895	Nominal RA [deg]
dec_nom	56.871488253377	Nominal Dec [deg]
roll_nom	251.87192453081	Nominal Roll [deg]
revision	3	Processing version of data
ontime	38805.799925357	Sum of GTIs [s]
livetime	38298.773580918	Livetime [s]
ontime2	38799.517964959	Sum of GTIs [s]
ontime3	38796.377034605	Sum of GTIs [s]
ontime6	38799.517964989	Sum of GTIs [s]
ontime7	38805.799925357	Sum of GTIs [s]
ontime8	38802.658935189	Sum of GTIs [s]
l2events	280135	Number of level 2 events



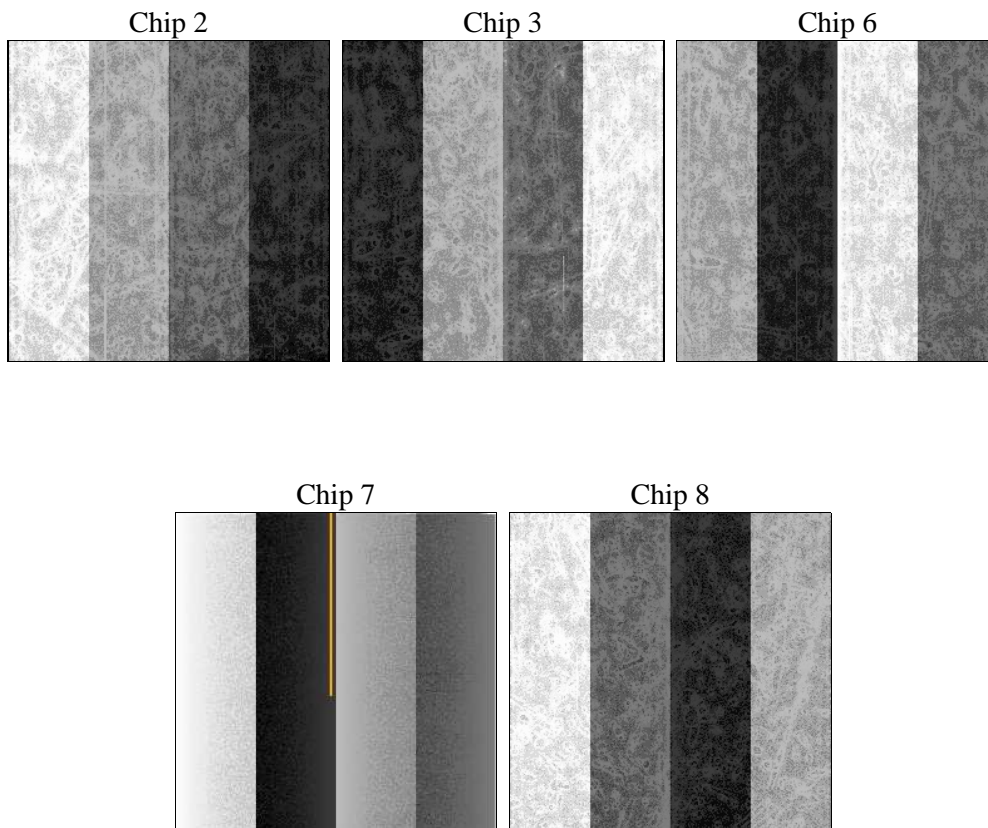
## 2 OBI

### 2.1 OBI

#### 2.1.1 Images



#### 2.1.2 Bias



### 2.1.3 Parameters

obi_num	0	Obi number	sched_exp_time	38629.000000	[s] Scheduled observation exposure time
ascdsver	8.4.5	Processing system revision	ontime	38805.799925357	Sum of GTIs [s]
caldsver	4.5.2	&#160	ontime2	38799.517964959	Sum of GTIs [s]
date	2012-12-03T01:08:39	Date and time of file creation	ontime3	38796.377034605	Sum of GTIs [s]
revision	3	Processing version of data	ontime6	38799.517964989	Sum of GTIs [s]
			ontime7	38805.799925357	Sum of GTIs [s]
			ontime8	38802.658935189	Sum of GTIs [s]
			l1events	1640560	Number of level 1 events

### 2.1.4 Events

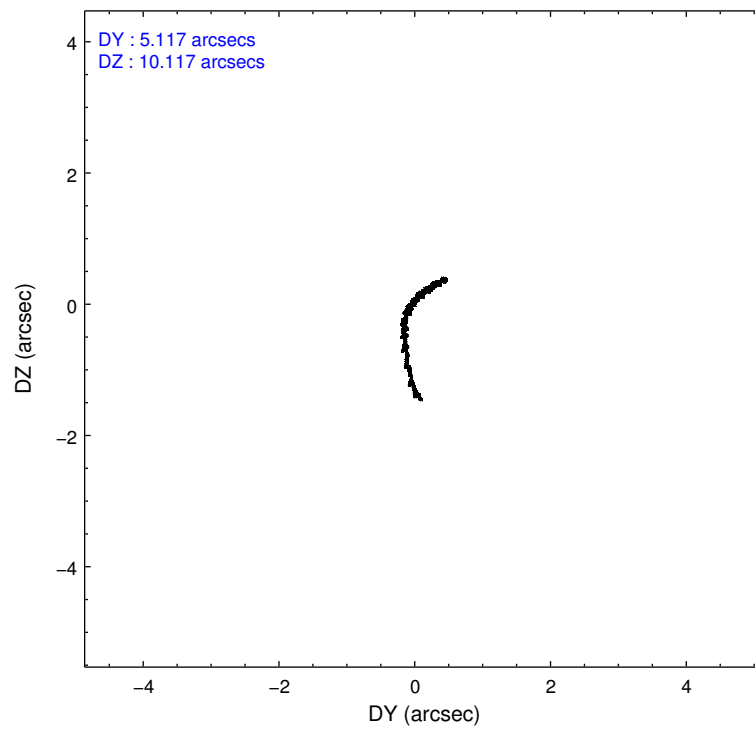
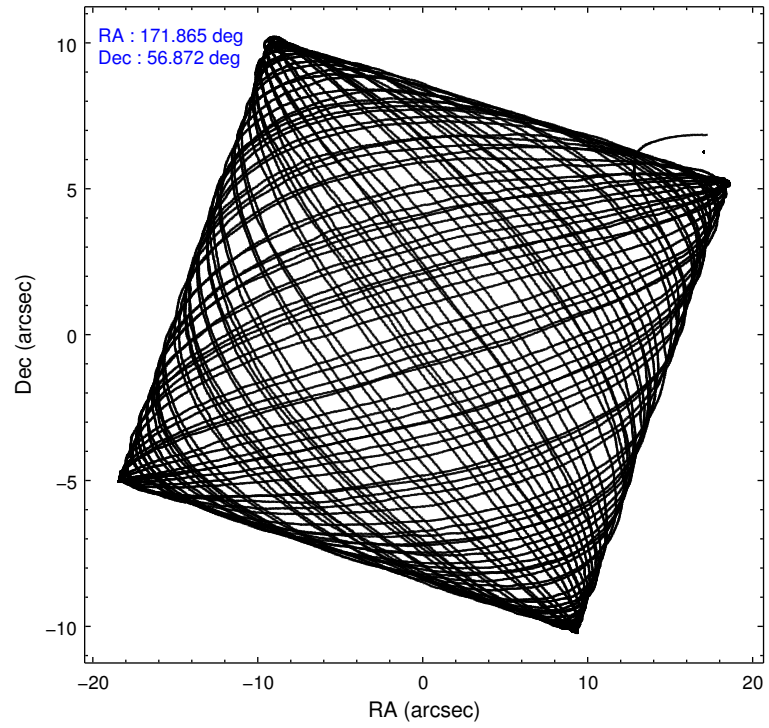
	ccd 2	ccd 3	ccd 6	ccd 7	ccd 8
level 1 events	287951	286275	297312	397010	372012
rejected events	254571	252769	263912	234023	295845
rejected %	88%	88%	88%	58%	79%

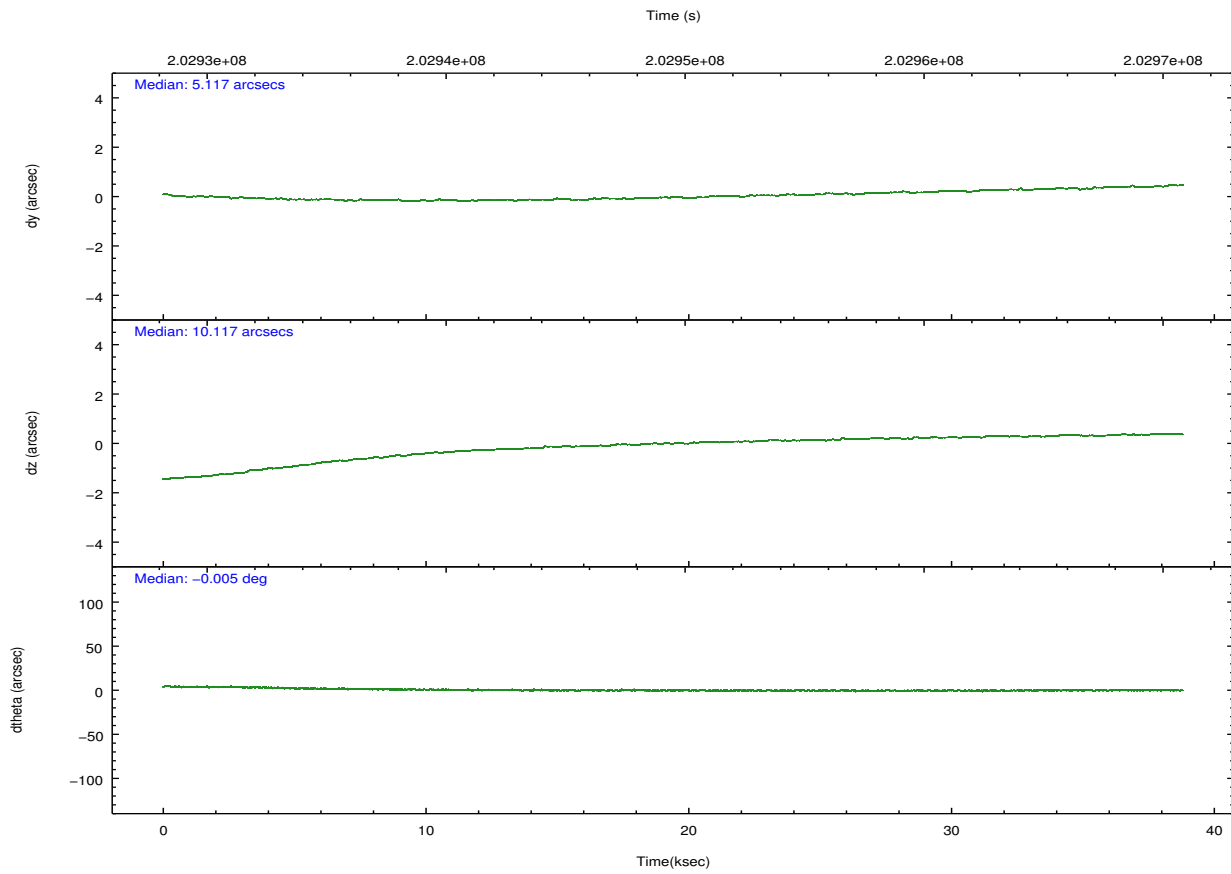
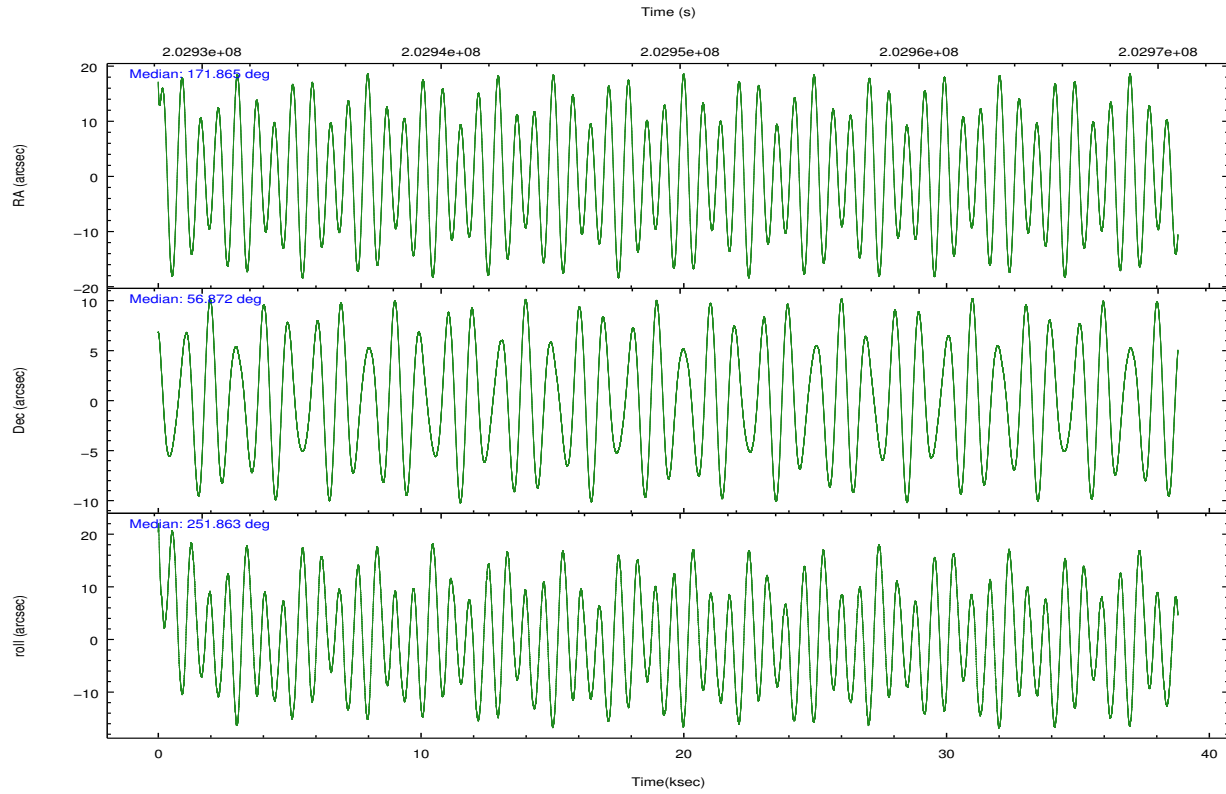
	ccd 2	ccd 3	ccd 6	ccd 7	ccd 8
grade 0 events	15059	14974	13041	15158	23928
	5%	5%	4%	3%	6%
grade 1 events	166	176	142	413	274
	0%	0%	0%	0%	0%
grade 2 events	6854	6421	7062	32859	16971
	2%	2%	2%	8%	4%
grade 3 events	3255	3388	3361	14668	8145
	1%	1%	1%	3%	2%
grade 4 events	3218	3222	3378	14529	7790
	1%	1%	1%	3%	2%
grade 5 events	11205	12728	13196	37625	17452
	3%	4%	4%	9%	4%
grade 6 events	5358	5910	6954	87650	20252
	1%	2%	2%	22%	5%
grade 7 events	242836	239456	250178	194108	277200
	84%	83%	84%	48%	74%

## 2.2 Compared Parameters

Parameter	Planned	Actual	Parameter	Planned	Actual
Instrument	ACIS	ACIS	Obspar format version number	7	7
Detector	ACIS-23678	ACIS-23678	Obspar file type	PREDICTED	ACTUAL
Grating	NONE	NONE	Obspar update status	NONE	UPDATED
Data mode	VFAINT	VFAINT	Number of optional ACIS chips dropped	0	0
Observation mode	POINTING	POINTING	On-chip summing requested	N	N
[deg] Pointing RA	171.854466	171.865380428947	Subarray requested	NONE	NONE
[deg] Pointing Dec	56.898070	56.8714882533774	Alternating exposures requested	N	N
[deg] Pointing Roll	251.724431	251.8719245308095	[s] Primary exposure time	0.000000	3.1
[mm] SIM focus pos	-0.684267	-0.6828225247311905			
[mm] SIM defocus	0	0.001444936568705701			
[mm] SIM translation stage pos	-190.132523	-190.1400660498719			
[mm] SIM translation stage offset	0	0.00754346686406393			
[s] Observation start time (MET)	202930272.184000	202929050.08355			
Observation start date	2004-06-06T17:30:08	2004-06-06T17:10:50			
[s] Observation end time (MET)	202968901.184000	202969302.86033			
Observation end date	2004-06-07T04:13:57	2004-06-07T04:21:42			
Read mode	TIMED	TIMED			

## 2.3 Aspect



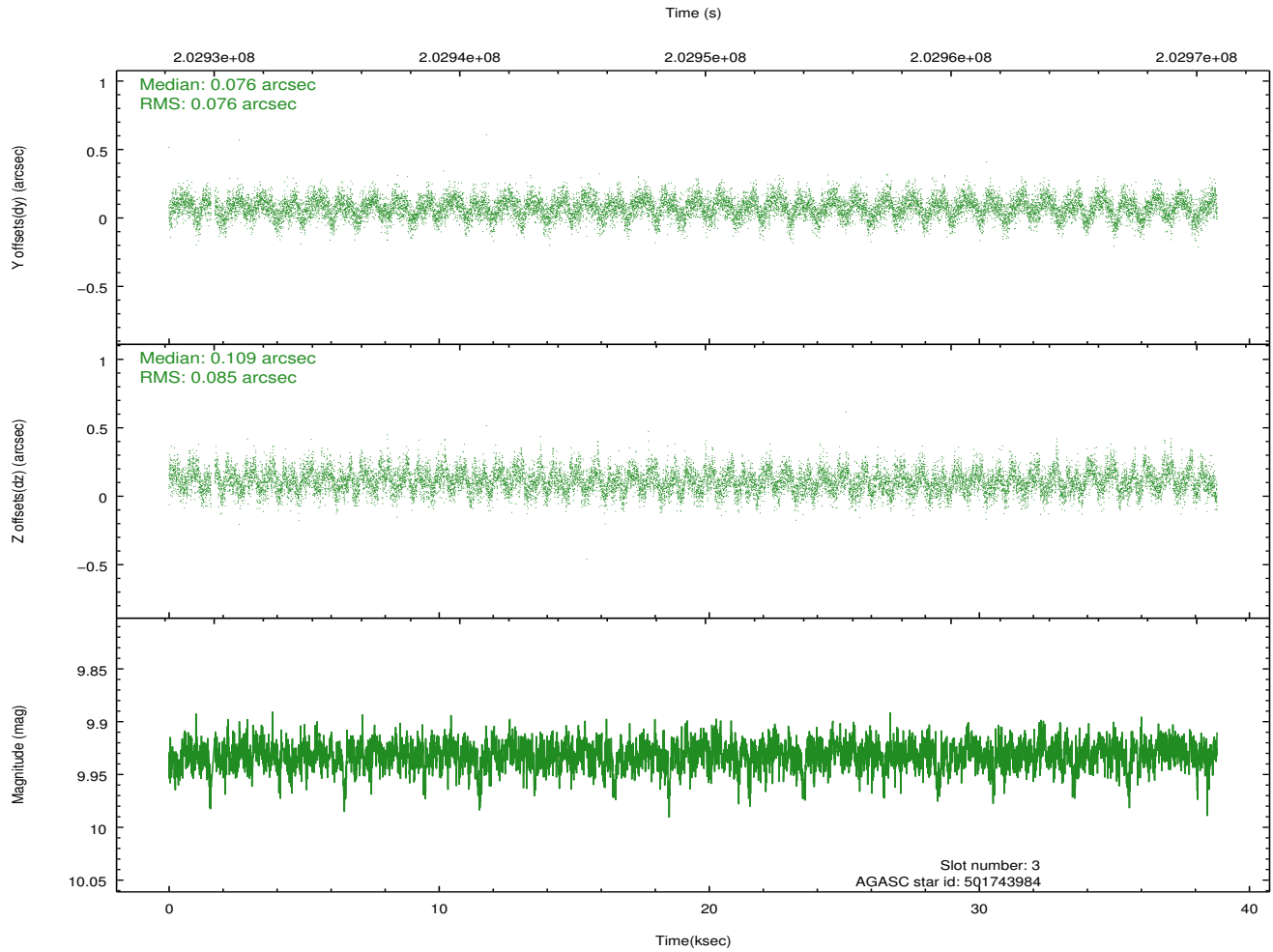
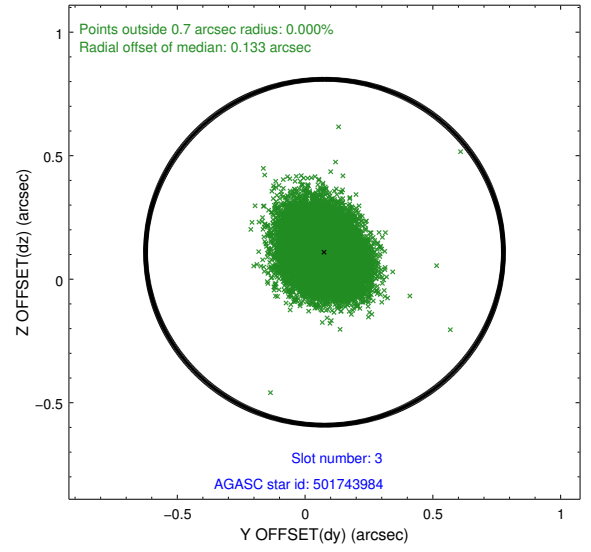
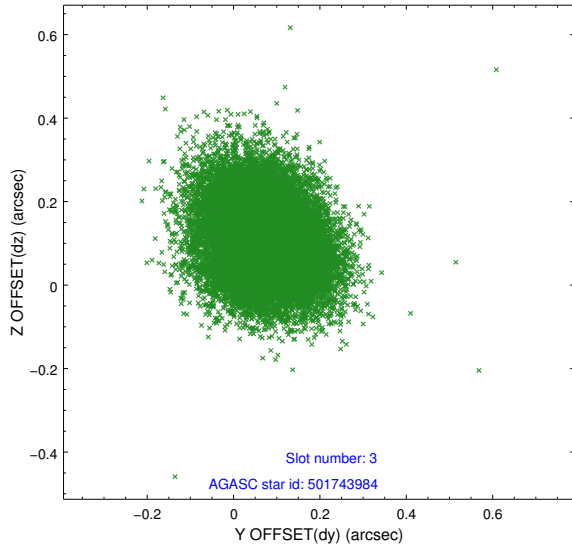


### Slot Statistics

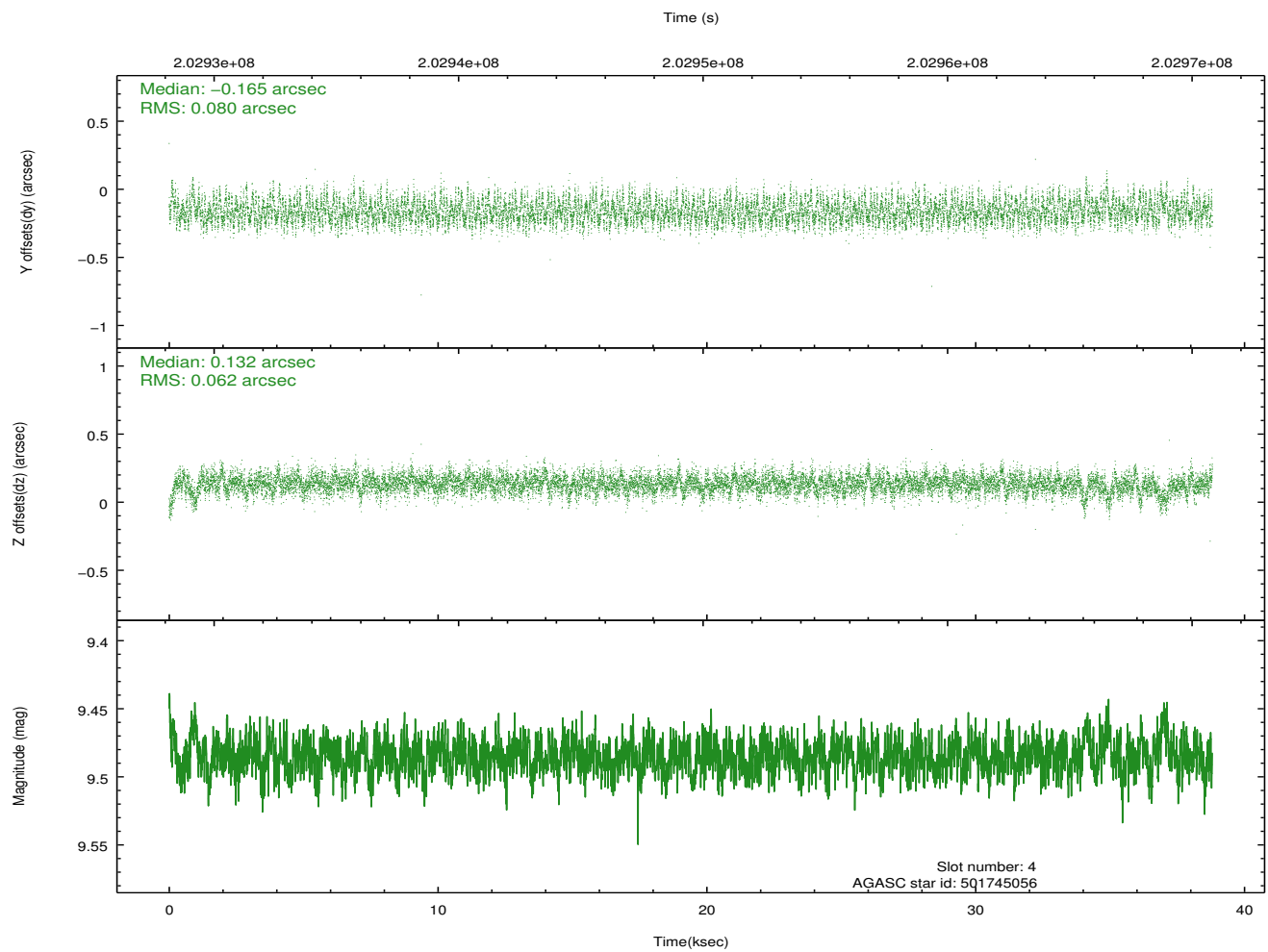
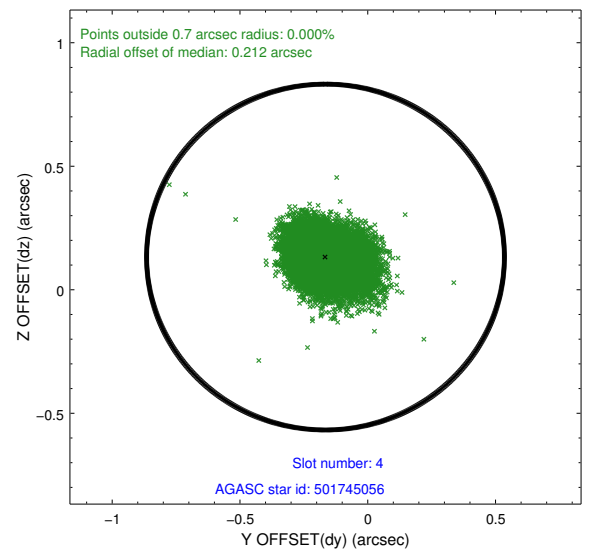
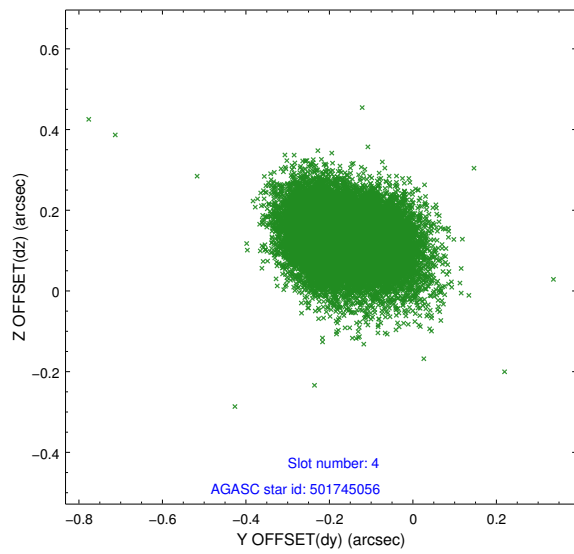
slot	status	id	mag	n_pts	med_dy	med_dz	dr1	dr2	ra	dec	mean_y	mean_z
0	FID	ACIS-S-2	7.10	9466	-0.070	-0.038	0.015	0.029	0.000000	0.000000	-757.91	-1731.24
1	FID	ACIS-S-4	7.20	9466	0.128	0.044	0.009	0.039	0.000000	0.000000	2155.52	177.34
2	FID	ACIS-S-5	7.23	9465	-0.088	0.001	0.018	0.036	0.000000	0.000000	-1810.77	170.95
3	GUIDE	501743984	9.93	18845	0.076	0.109	0.120	0.195	171.294983	56.867094	447.33	-1011.28
4	GUIDE	501745056	9.49	18925	-0.165	0.132	0.107	0.173	173.013273	57.050098	-1249.69	1977.03
5	GUIDE	501746360	8.30	18923	0.223	-0.324	0.058	0.092	171.888954	56.575508	1081.52	429.34
6	GUIDE	501748320	9.53	18917	0.022	-0.028	0.114	0.182	170.966165	57.350324	-1015.02	-2151.74
7	GUIDE	501750512	9.84	18907	-0.161	0.108	0.122	0.194	173.141567	57.249032	-2008.27	1976.60

## 2.4 Star Slots

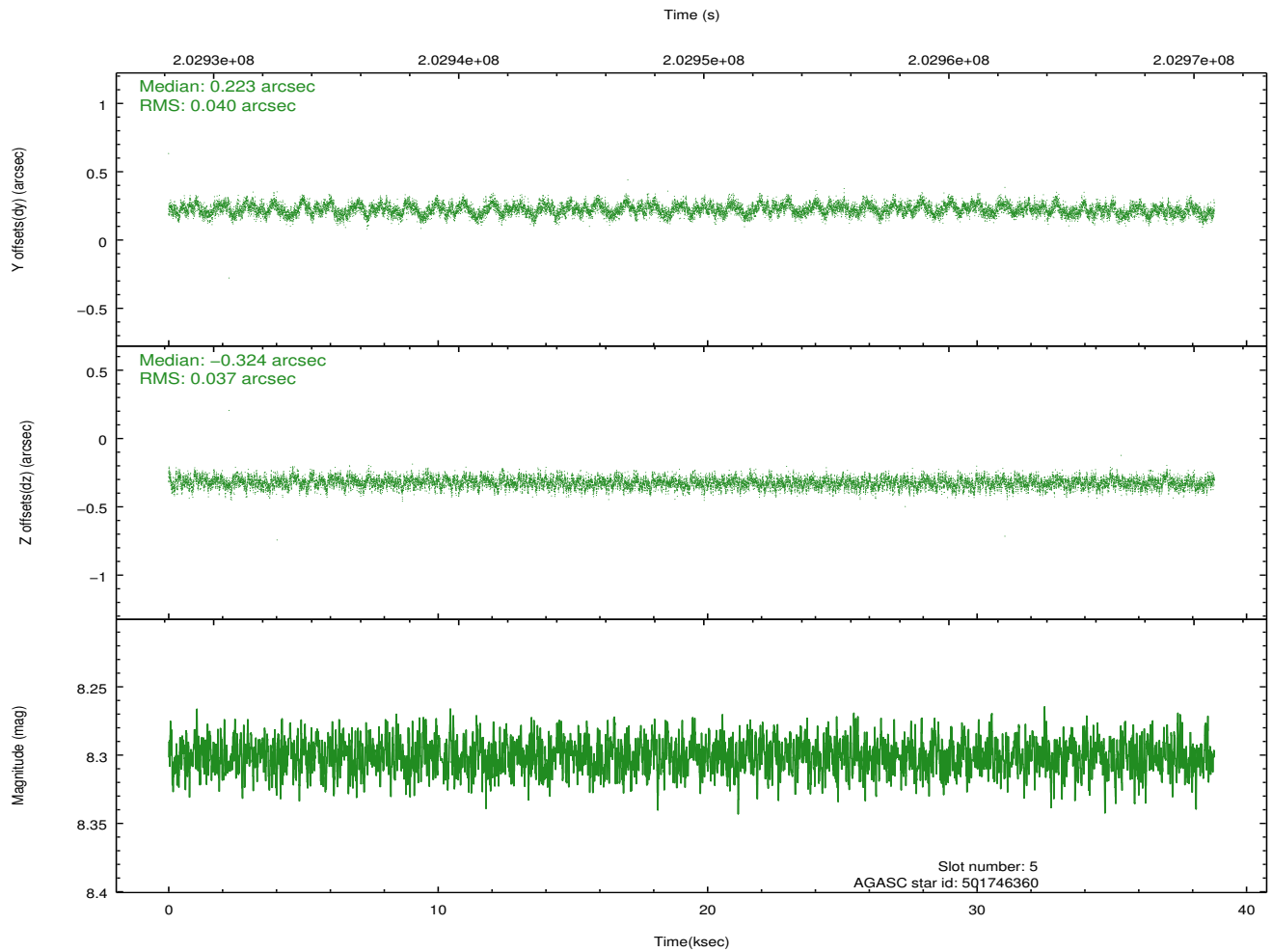
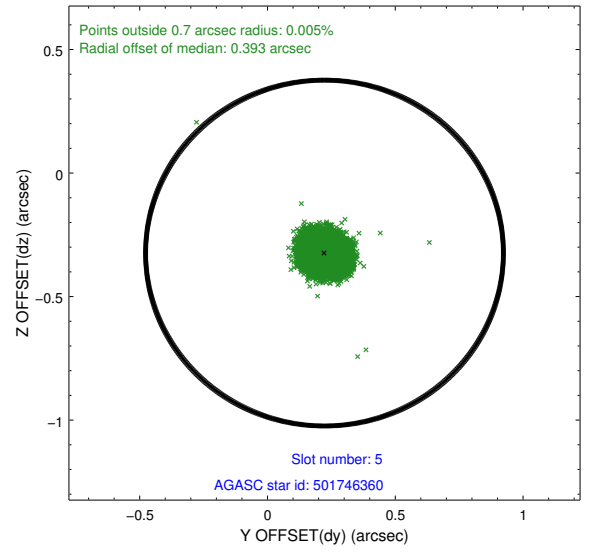
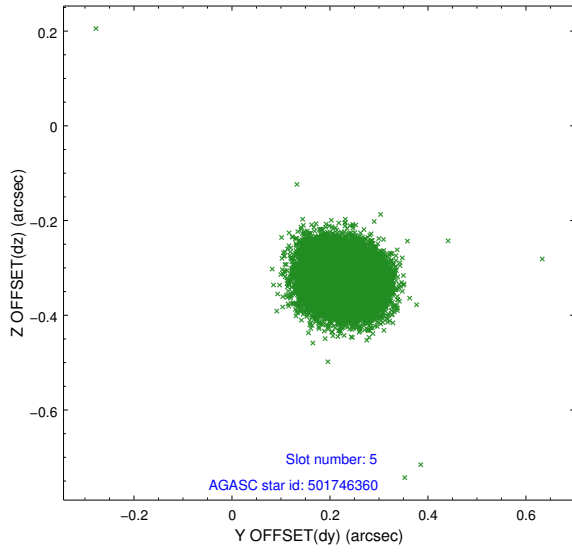
### 2.4.1 Slot 3



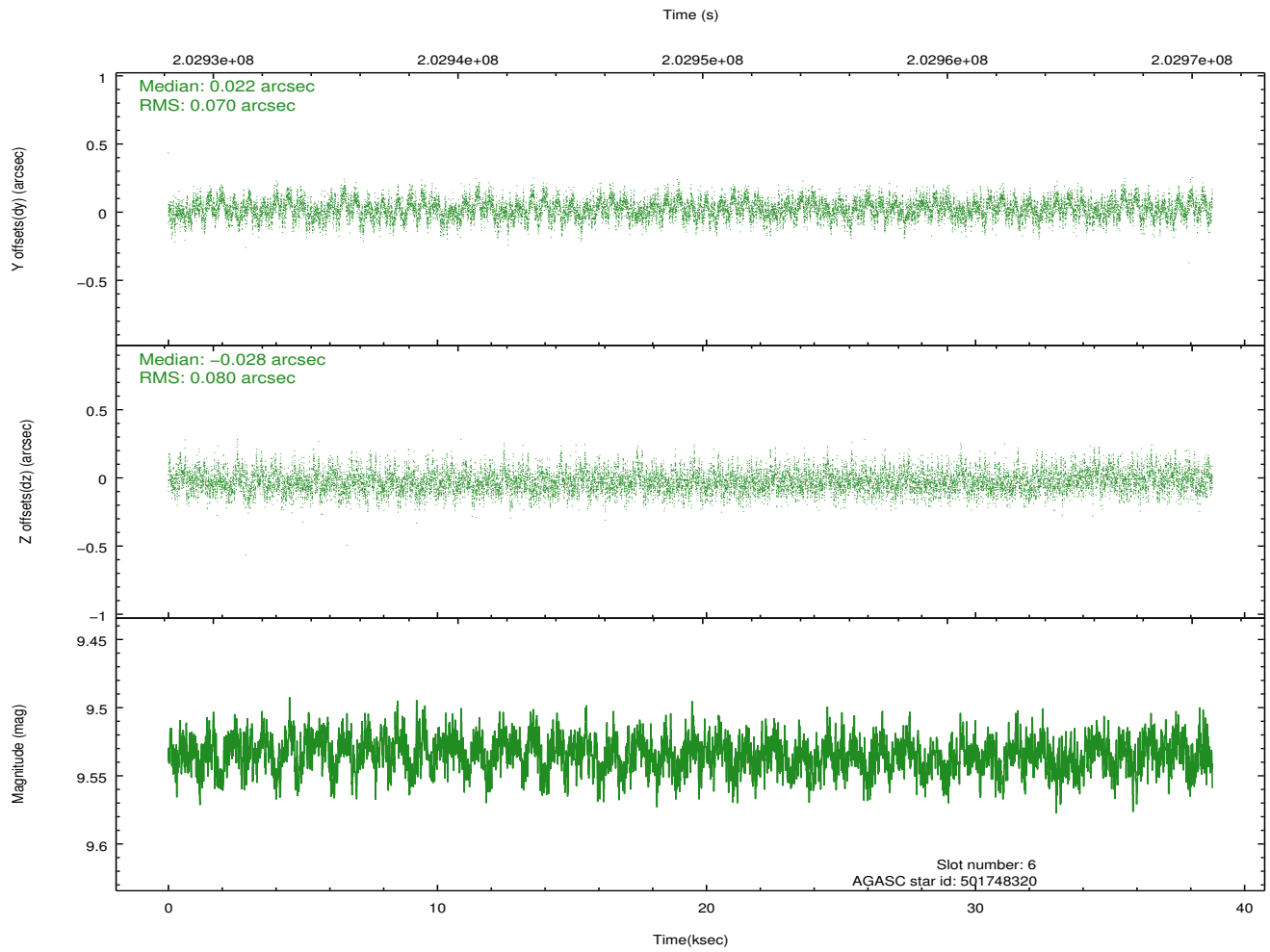
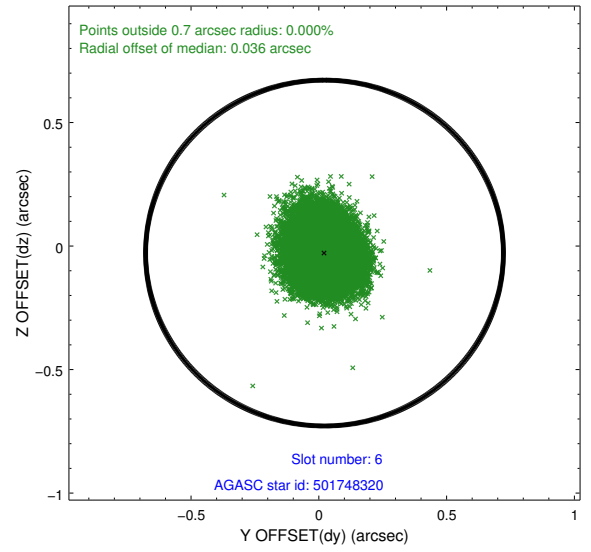
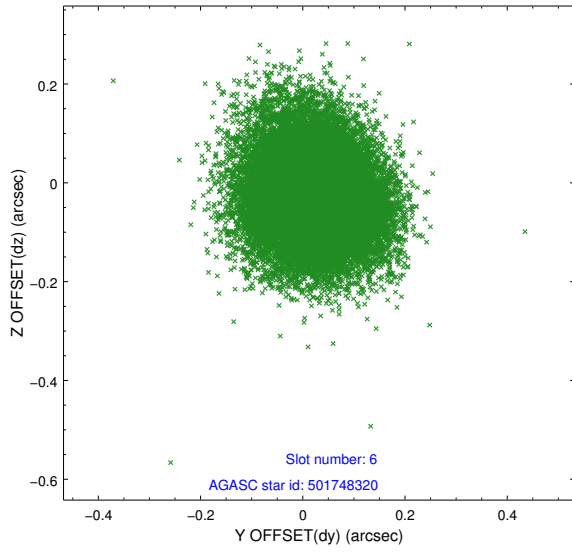
## 2.4.2 Slot 4



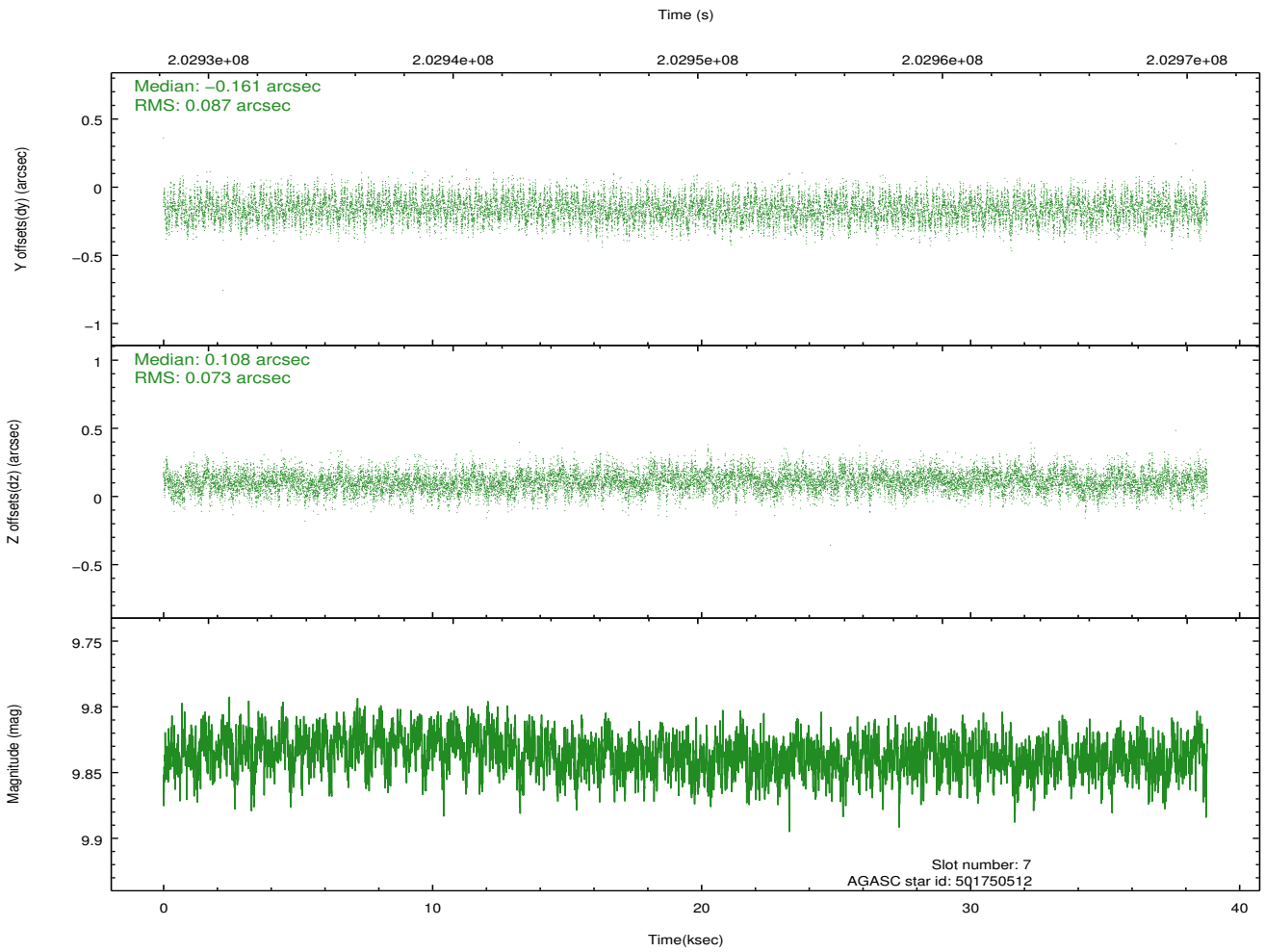
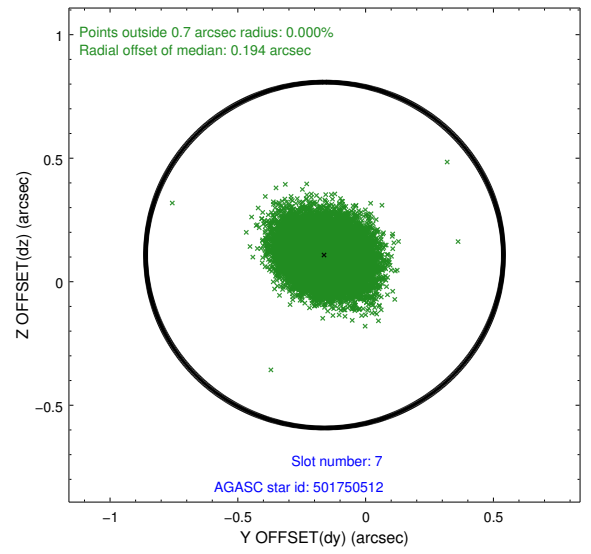
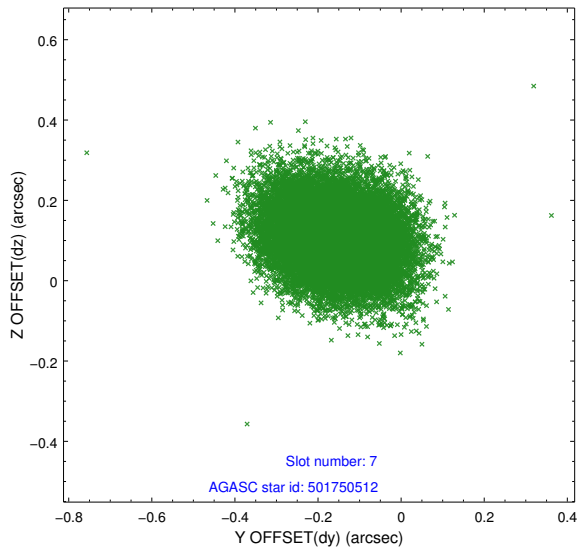
### 2.4.3 Slot 5



### 2.4.4 Slot 6

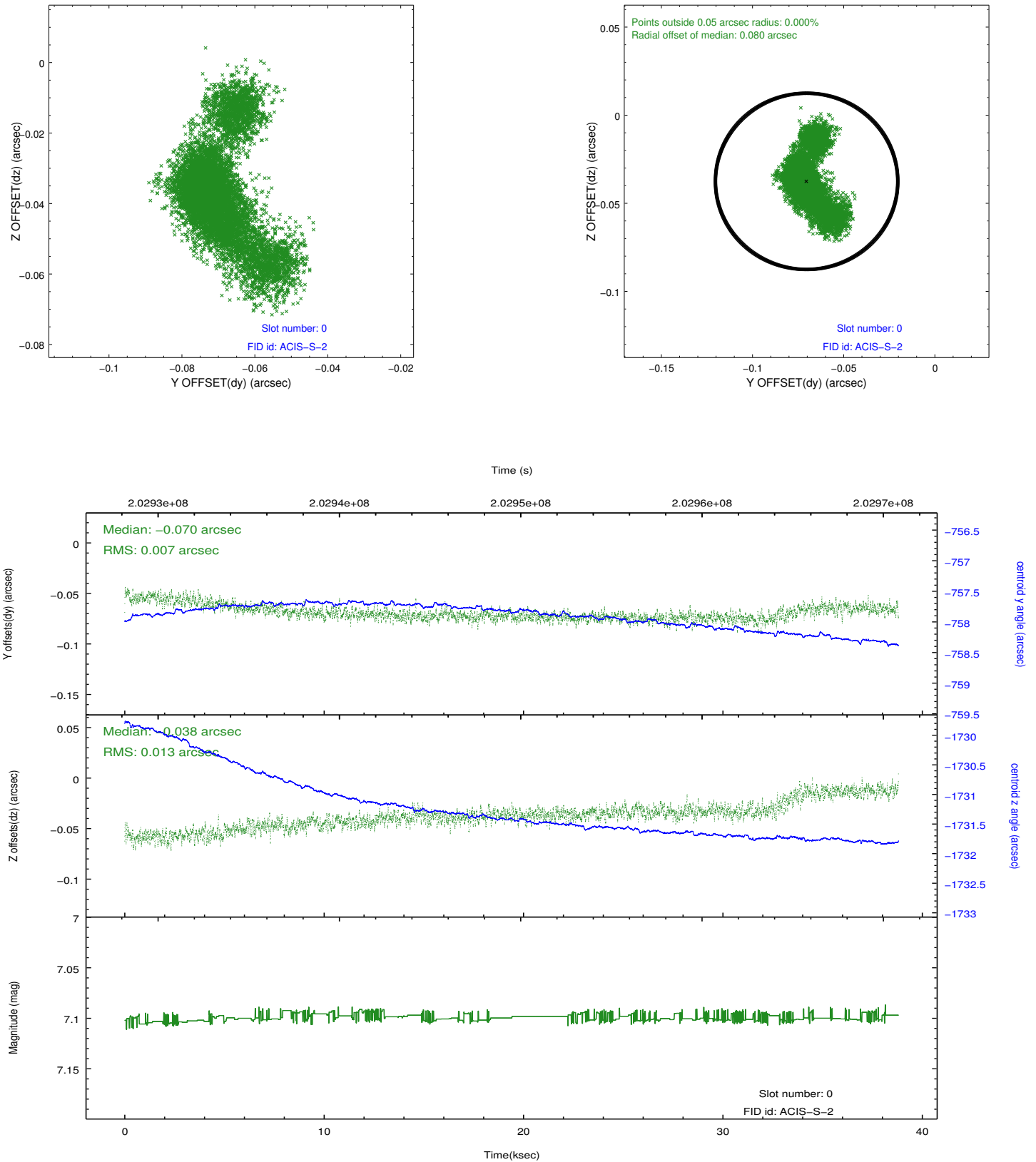


### 2.4.5 Slot 7

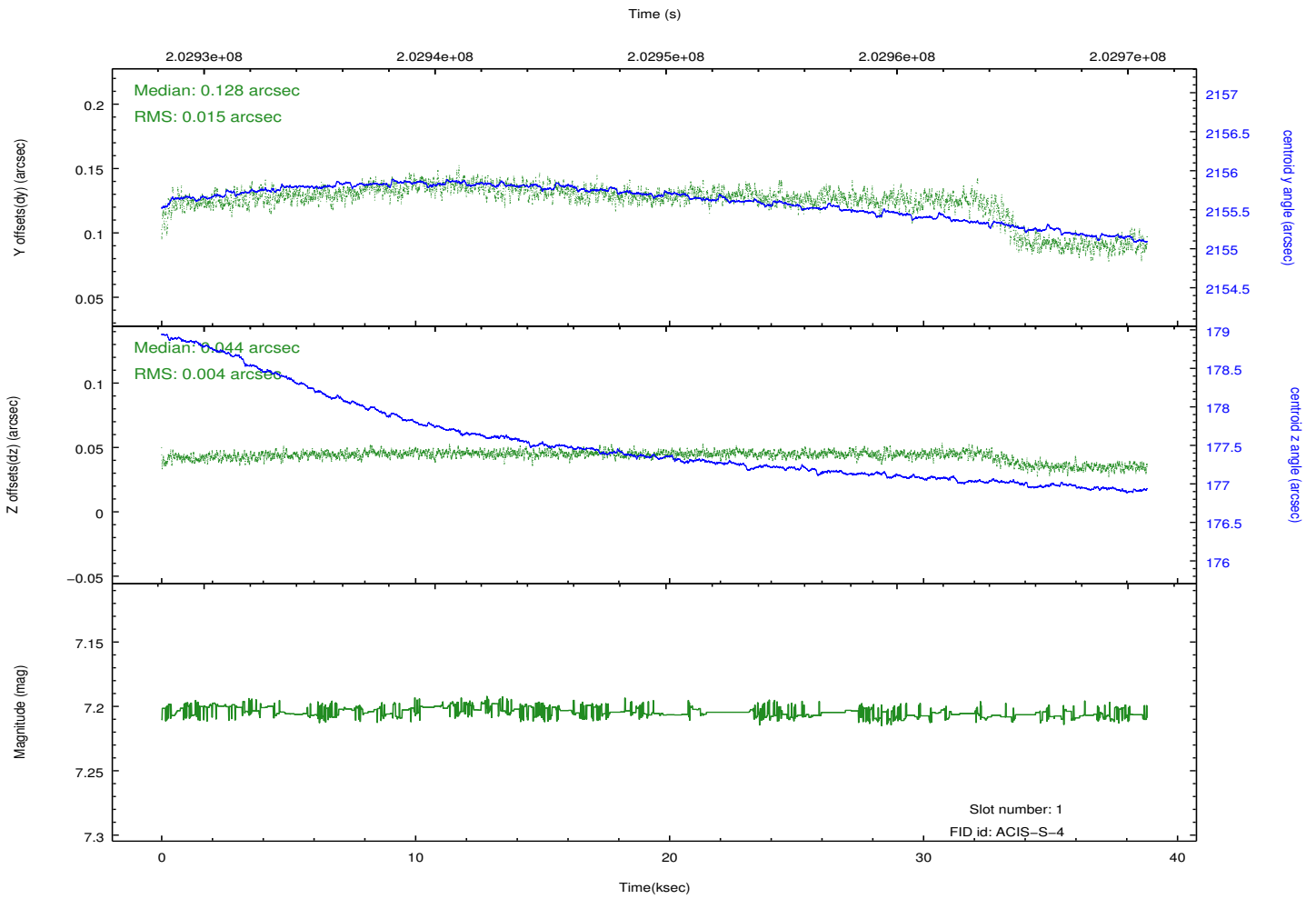
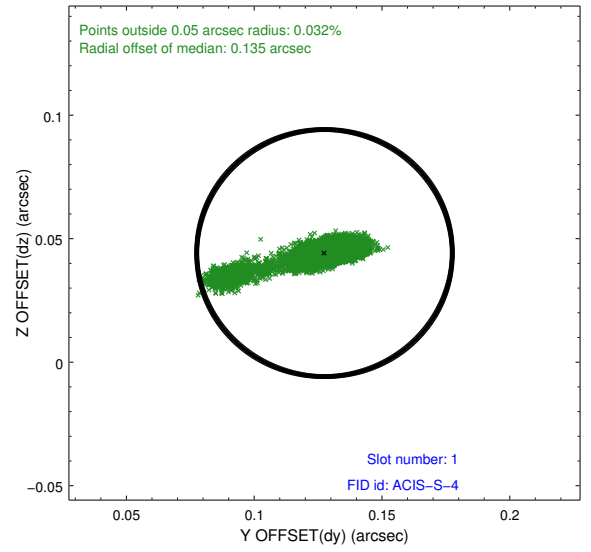
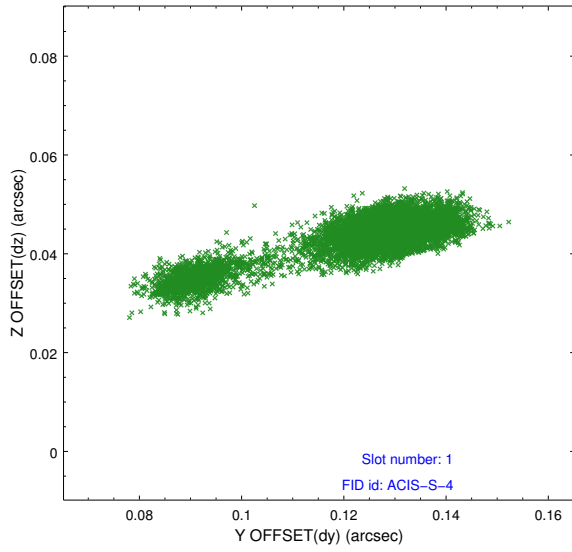


## 2.5 FID Slots

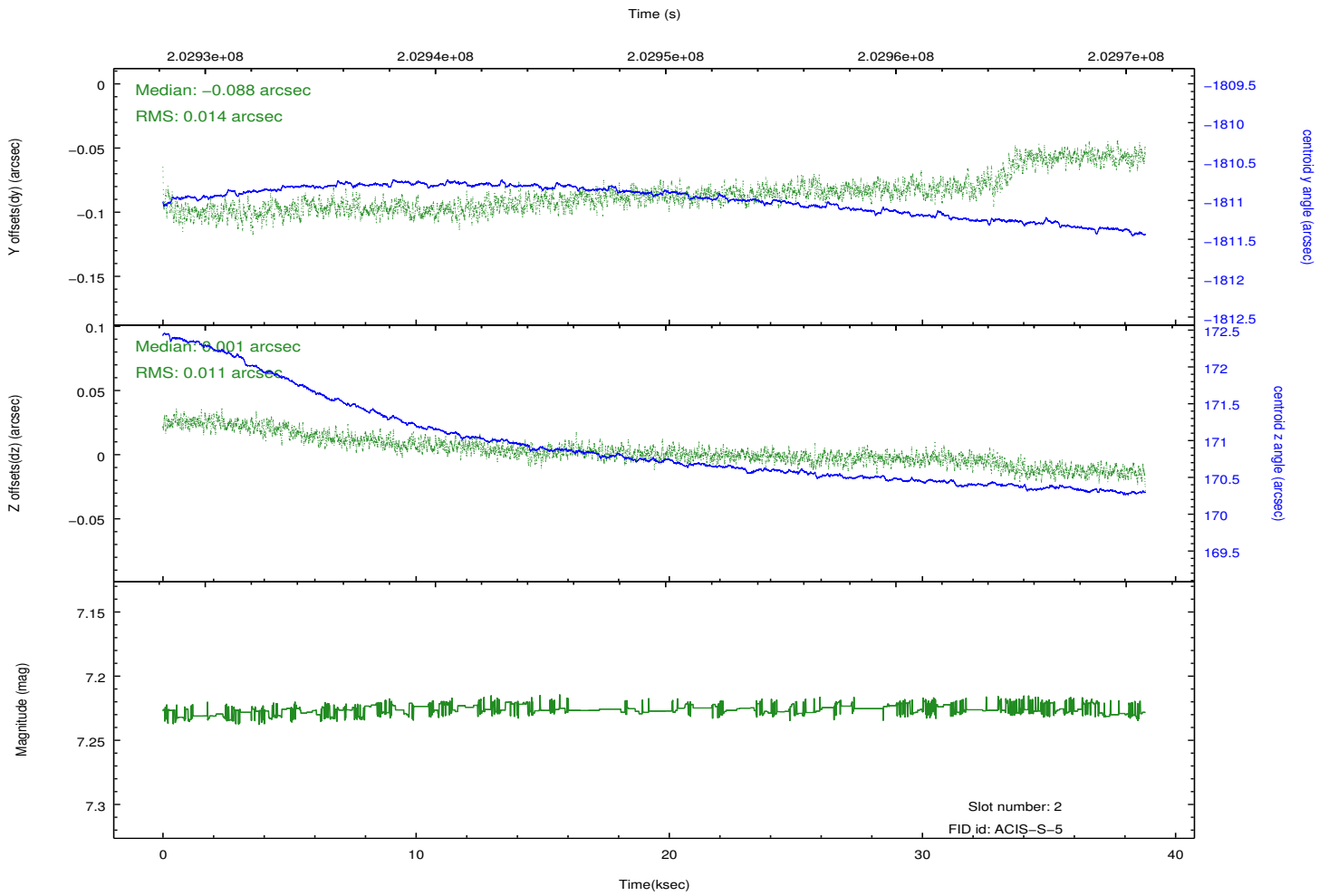
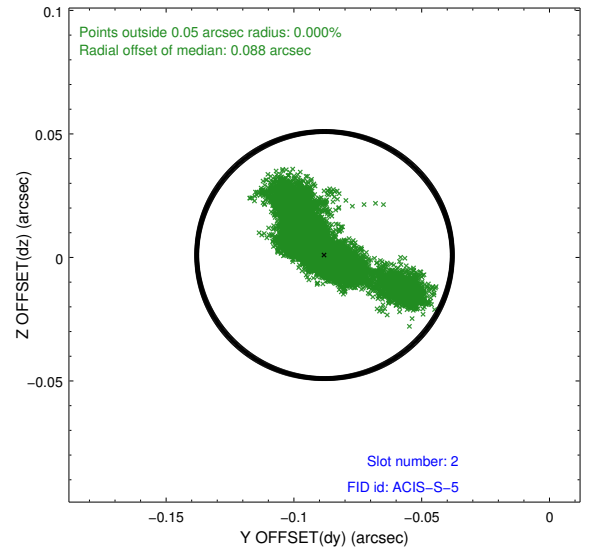
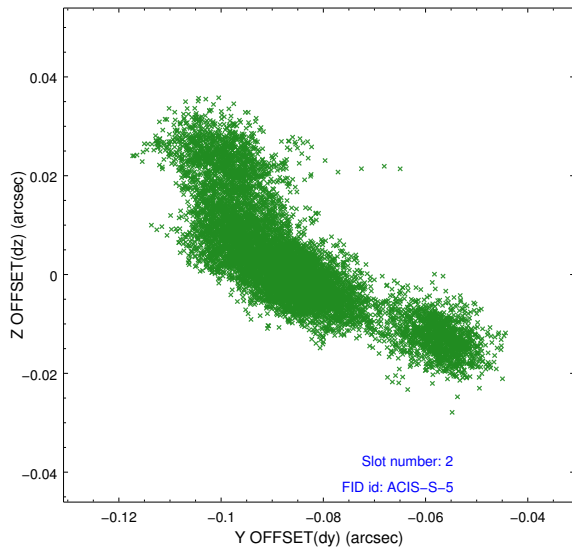
### 2.5.1 Slot 0



## 2.5.2 Slot 1



### 2.5.3 Slot 2



# A Summary

## A.1 Status

V&V Scientist	Jen Lauer
V&V Date (YYYY-MM-DD)	2012.12.18
V&V Edition	1
V&V Disposition and Status	OK
V&V Charge Time	38.805

## A.2 Comments

Monitor constraint met.