

V&V Reference Report

L2 ASCDS Version : 8.5

Observation 4950 - L2 Version 3
Chandra X-Ray Center

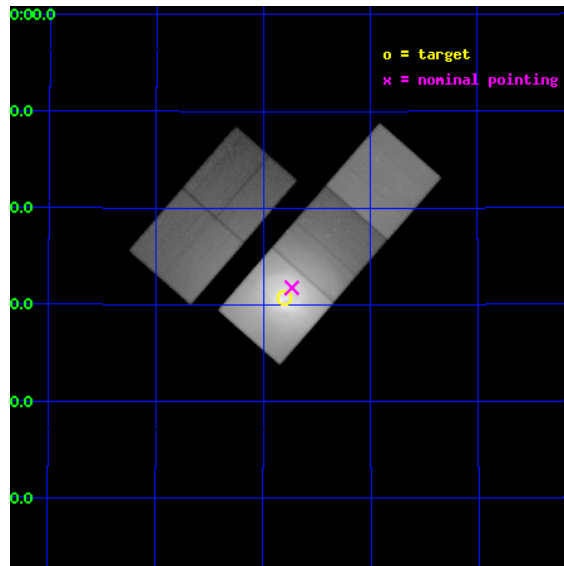
L2 Processing Date : Dec 11 2012

Contents

1	Front	2
2	OBI	3
2.1	OBI	3
2.1.1	Images	3
2.1.2	Bias	3
2.1.3	Parameters	4
2.1.4	Events	4
2.2	Compared Parameters	5
2.3	Aspect	6
2.4	Star Slots	9
2.4.1	Slot 3	9
2.4.2	Slot 4	10
2.4.3	Slot 5	11
2.4.4	Slot 6	12
2.4.5	Slot 7	13
2.5	FID Slots	14
2.5.1	Slot 0	14
2.5.2	Slot 1	15
2.5.3	Slot 2	16
A	Summary	17
A.1	Status	17
A.2	Comments	17

1 Front

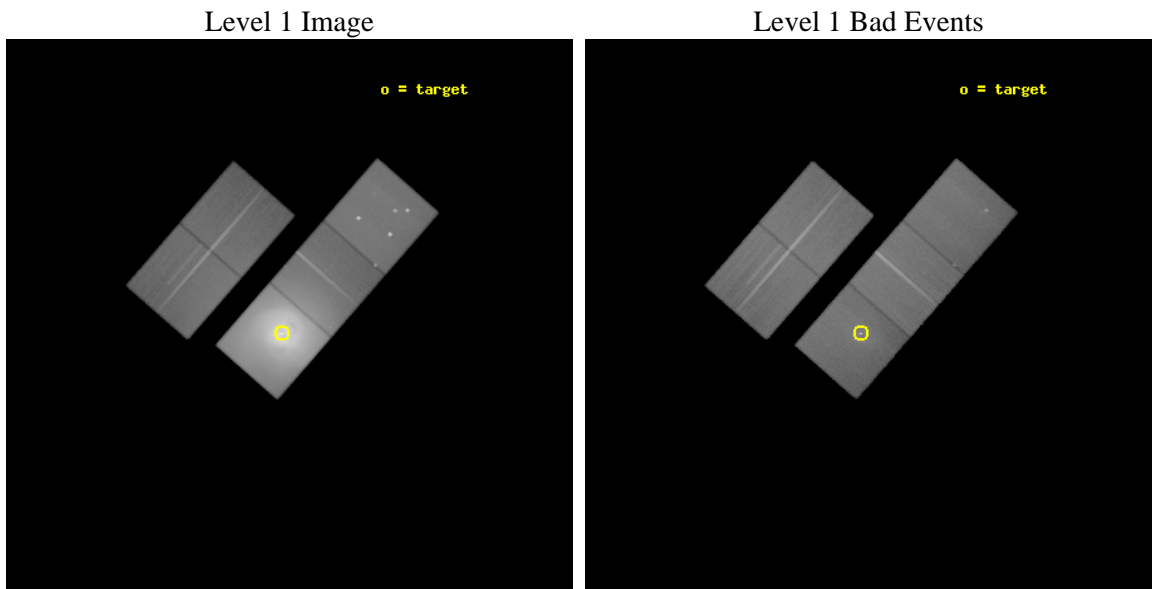
seq_num	800399	Sequence number
obs_id	4950	Observation id
title	A Megasecond Image of the Core of the Perseus Cluster	Proposal tit
observer	Professor Andrew Fabian	Principal investigator
object	Abell 426	Source name
dtycycle	0	
cycle	P	events from which exps? Prim/Second/Both
ra_targ	49.950833	Observer's specified target RA [deg]
dec_targ	41.511722	Observer's specified target Dec [deg]
ra_nom	49.933170769631	Nominal RA [deg]
dec_nom	41.529494509539	Nominal Dec [deg]
roll_nom	131.12760726877	Nominal Roll [deg]
revision	3	Processing version of data
ontime	98199.279068053	Sum of GTIs [s]
liveltime	96916.233193771	Livetime [s]
ontime2	98013.796146393	Sum of GTIs [s]
ontime3	98060.952188998	Sum of GTIs [s]
ontime5	98598.14302054	Sum of GTIs [s]
ontime6	98089.262310743	Sum of GTIs [s]
ontime7	98199.279068053	Sum of GTIs [s]
l2events	10235975	Number of level 2 events



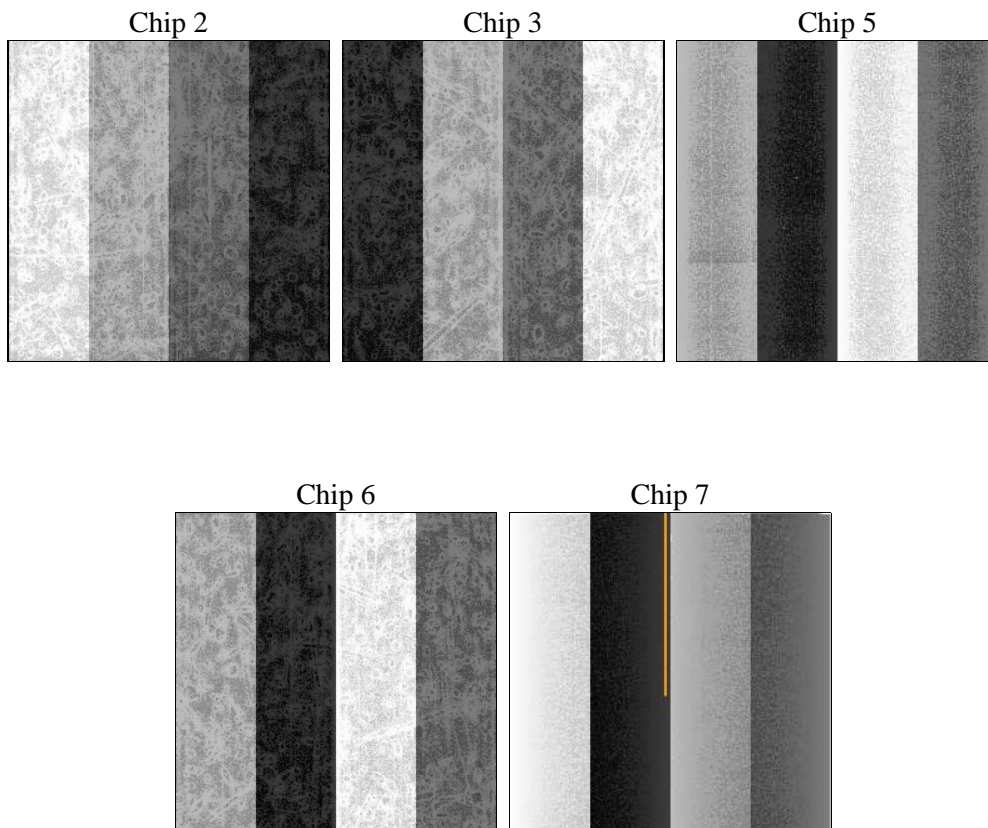
2 OBI

2.1 OBI

2.1.1 Images



2.1.2 Bias



2.1.3 Parameters

obi_num	0	Obi number	sched_exp_time	98821.840000	[s] Scheduled observation exposure time
ascdsver	8.5	Processing system revision	ontime	98199.279068053	Sum of GTIs [s]
caldbver	4.5.4	 	ontime2	98013.796146393	Sum of GTIs [s]
date	2012-12-10T05:03:09	Date and time of file creation	ontime3	98060.952188998	Sum of GTIs [s]
revision	3	Processing version of data	ontime5	98598.14302054	Sum of GTIs [s]
			ontime6	98089.262310743	Sum of GTIs [s]
			ontime7	98199.279068053	Sum of GTIs [s]
			l1events	13260490	Number of level 1 events

2.1.4 Events

	ccd 2	ccd 3	ccd 5	ccd 6	ccd 7		ccd 2	ccd 3	ccd 5	ccd 6	ccd 7
level 1 events	901724	1040318	1338272	1568584	8411592	grade 0 events	202332	336327	189486	744624	2141094
rejected events	619257	591894	464760	608426	480758		22%	32%	14%	47%	25%
rejected %	68%	56%	34%	38%	5%	grade 1 events	1324	1980	3296	3325	6222
							0%	0%	0%	0%	0%
						grade 2 events	36091	52283	238527	106039	2062867
							4%	5%	17%	6%	24%
						grade 3 events	13602	19222	49394	34770	916855
							1%	1%	3%	2%	10%
						grade 4 events	13711	19031	48448	34934	904012
							1%	1%	3%	2%	10%
						grade 5 events	21537	26150	76044	28537	128653
							2%	2%	5%	1%	1%
						grade 6 events	16742	21578	347741	39834	1906337
							1%	2%	25%	2%	22%
						grade 7 events	596385	563747	385336	576521	345552
							66%	54%	28%	36%	4%

2.2 Compared Parameters

Parameter	Planned	Actual	Parameter	Planned	Actual
Instrument	ACIS	ACIS	Obspar format version number	7	7
Detector	ACIS-23567	ACIS-23567	Obspar file type	PREDICTED	ACTUAL
Grating	NONE	NONE	Obspar update status	NONE	UPDATED
Data mode	FAINT	FAINT	Number of optional ACIS chips dropped	0	0
Observation mode	POINTING	POINTING	On-chip summing requested	N	N
[deg] Pointing RA	49.967749	49.93317076963133	Subarray requested	NONE	NONE
[deg] Pointing Dec	41.521022	41.5294945095389	Alternating exposures requested	N	N
[deg] Pointing Roll	130.948054	131.1276072687653	[s] Primary exposure time	0.000000	3.1
[mm] SIM focus pos	-0.684267	-0.6828225247311905			
[mm] SIM defocus	0	0.001444936568705701			
[mm] SIM translation stage pos	-190.132523	-190.1400660498719			
[mm] SIM translation stage offset	0	0.00754346686406393			
[s] Observation start time (MET)	213963388.184000	213963012.08689			
Observation start date	2004-10-12T10:15:24	2004-10-12T10:10:12			
[s] Observation end time (MET)	214062210.184000	214062421.20384			
Observation end date	2004-10-13T13:42:26	2004-10-13T13:47:01			
Read mode	TIMED	TIMED			

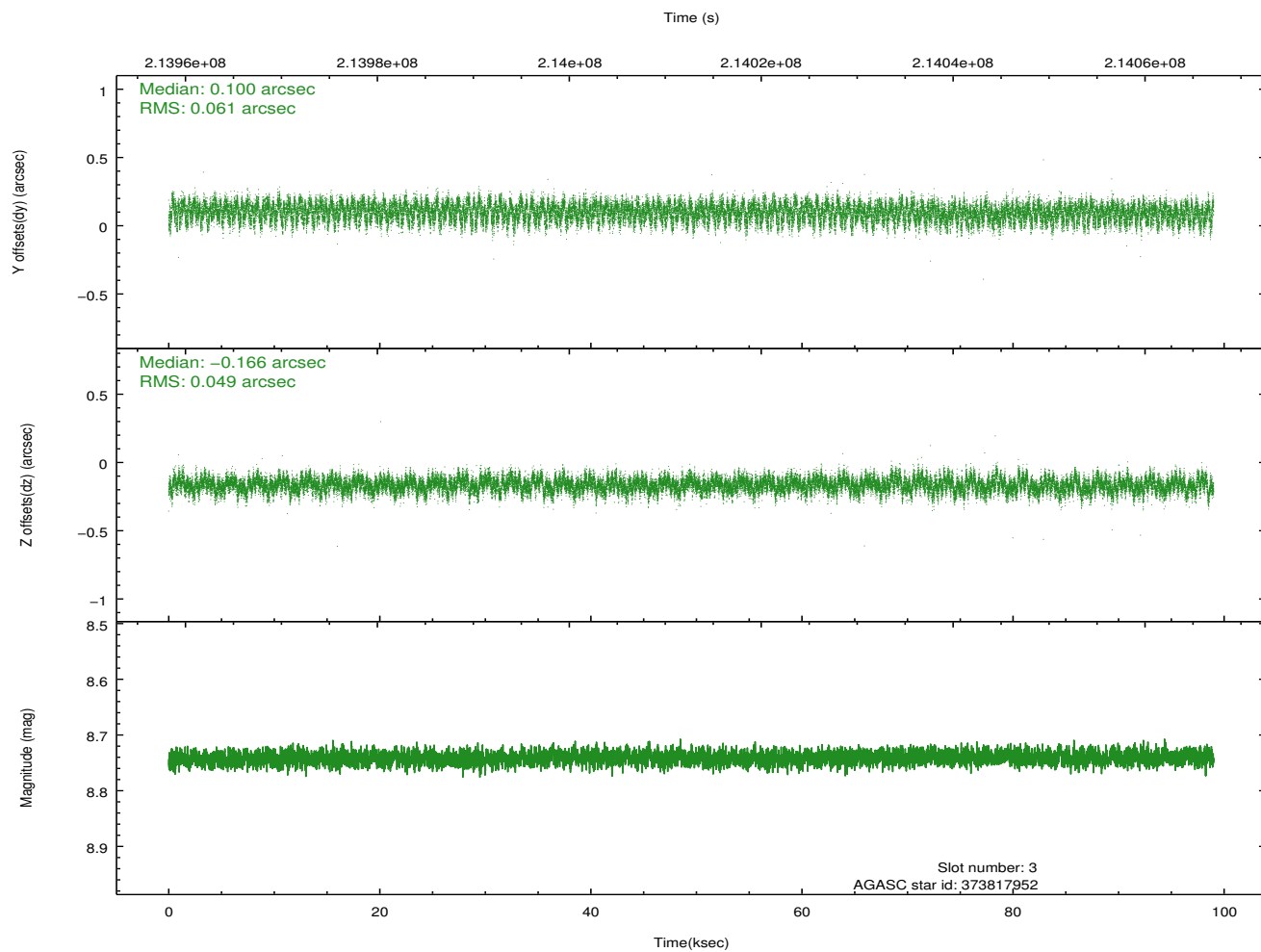
2.3 Aspect

Slot Statistics

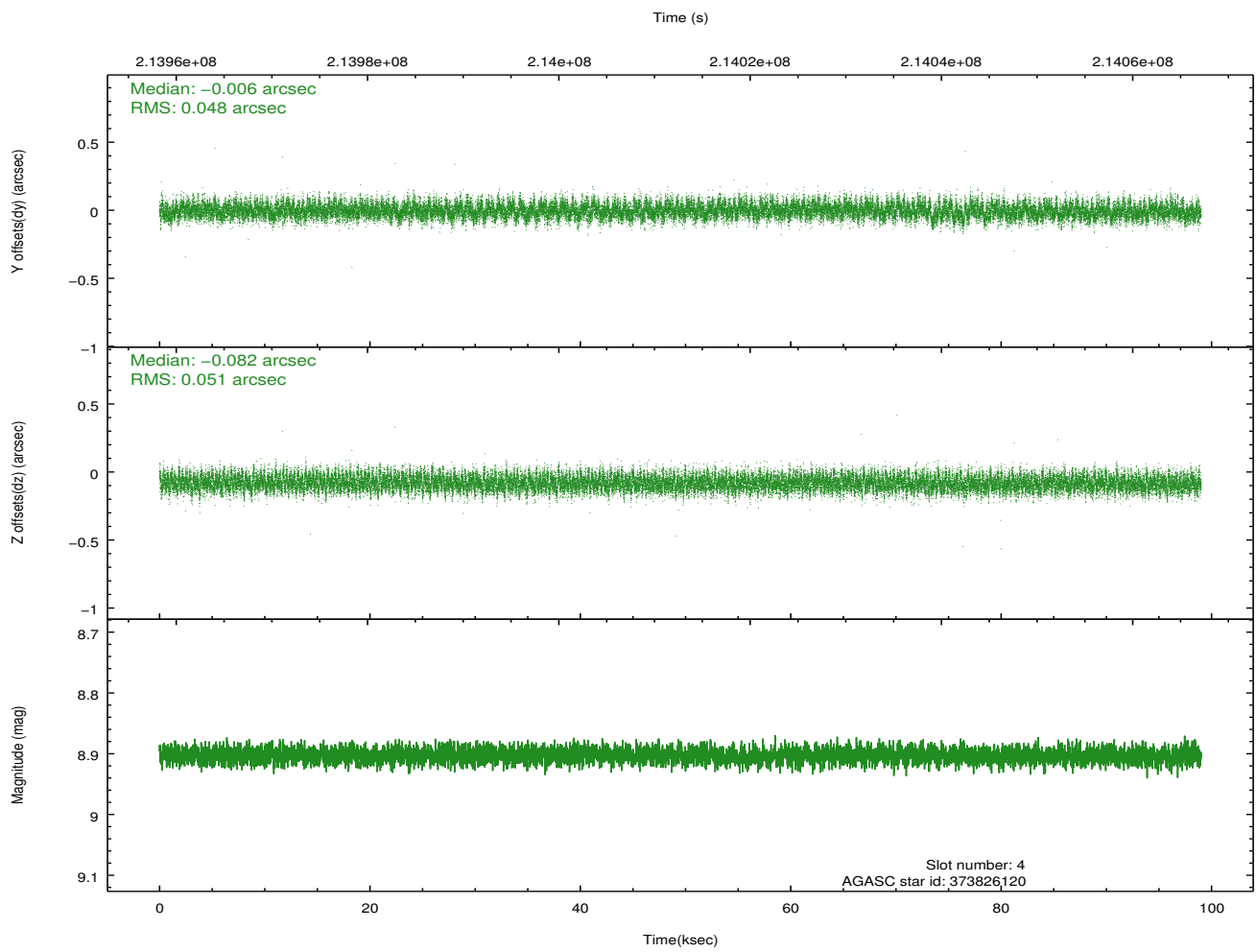
slot	status	id	mag	n_pts	med_dy	med_dz	dr1	dr2	ra	dec	mean_y	mean_z
0	FID	ACIS-S-1	7.19	24147	0.036	0.003	0.009	0.016	0.000000	0.000000	936.43	-1726.37
1	FID	ACIS-S-2	7.10	24149	-0.059	-0.021	0.006	0.010	0.000000	0.000000	-759.62	-1730.84
2	FID	ACIS-S-6	7.35	24149	0.003	0.023	0.009	0.016	0.000000	0.000000	402.11	815.08
3	GUIDE	373817952	8.74	48280	0.100	-0.166	0.084	0.132	49.913424	40.978510	-1378.26	1391.40
4	GUIDE	373826120	8.90	48272	-0.006	-0.082	0.074	0.118	49.738165	41.186341	-501.71	1259.01
5	GUIDE	374352808	8.78	48282	-0.106	0.101	0.095	0.146	49.969955	42.208621	1866.06	-1626.21
6	GUIDE	376057824	8.36	48275	-0.017	0.160	0.075	0.118	50.665569	41.926280	-116.99	-2372.44
7	GUIDE	374345008	9.36	47980	0.034	-0.021	0.134	0.215	48.768668	41.619367	2398.96	2191.15

2.4 Star Slots

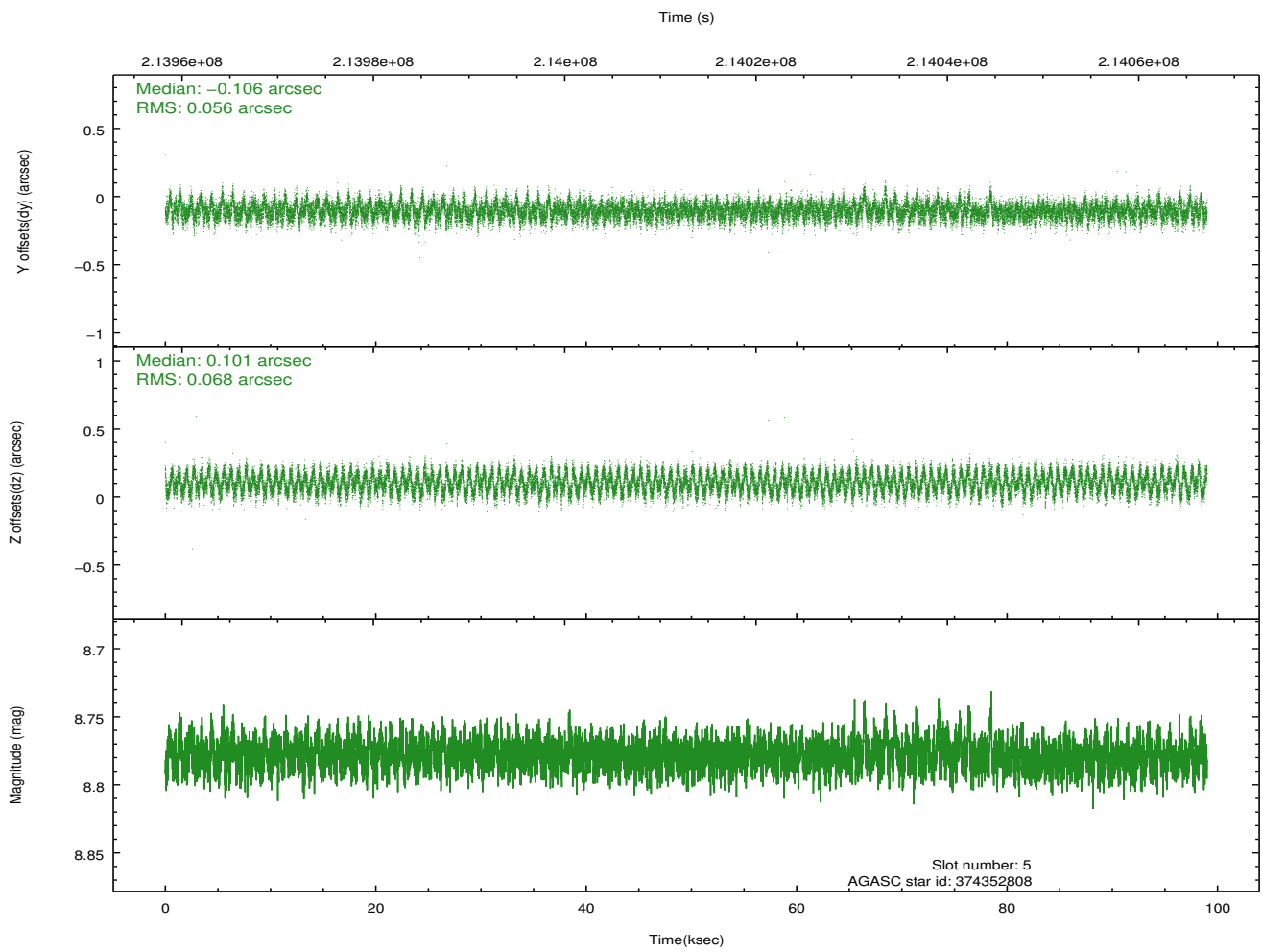
2.4.1 Slot 3



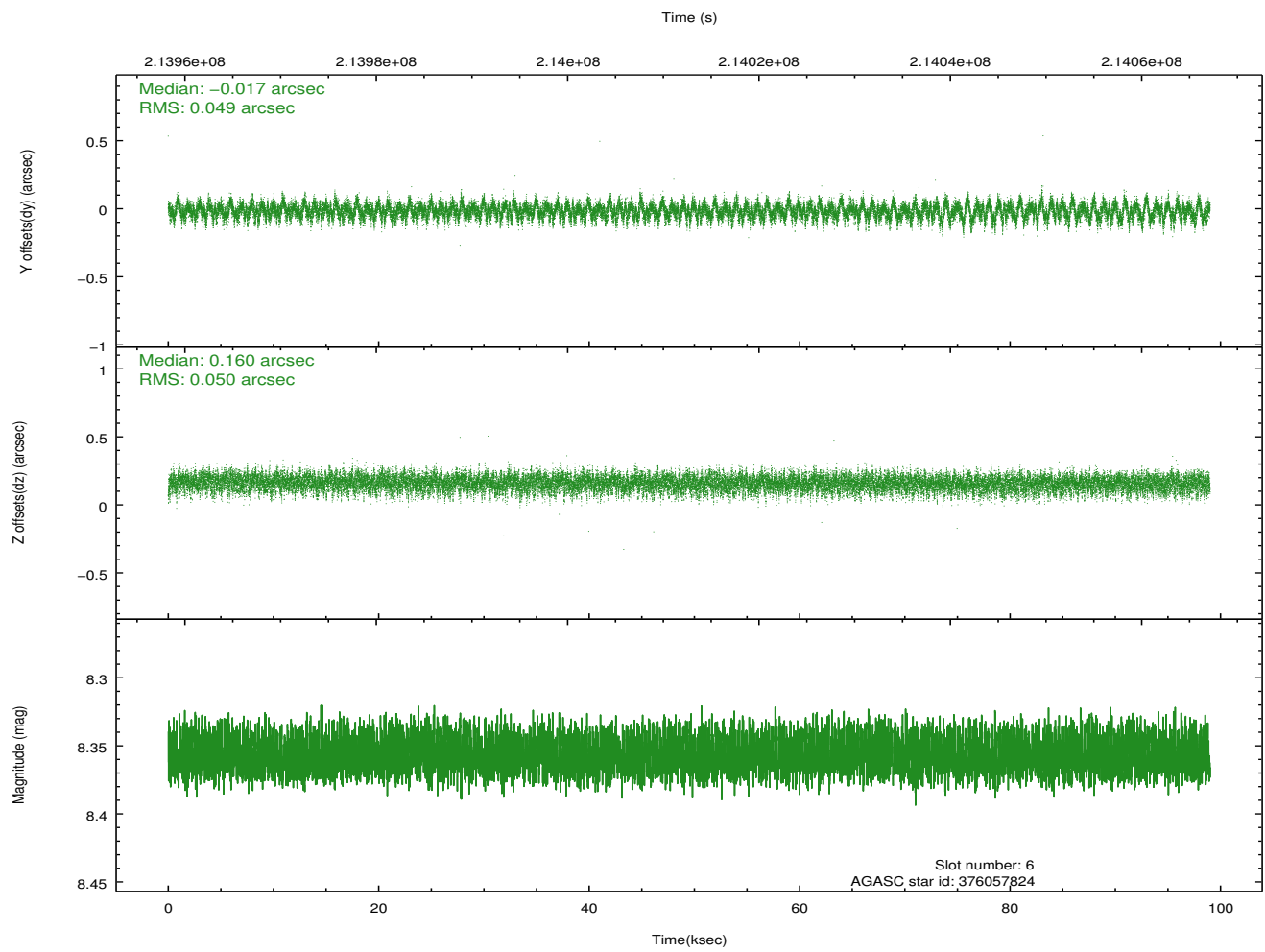
2.4.2 Slot 4



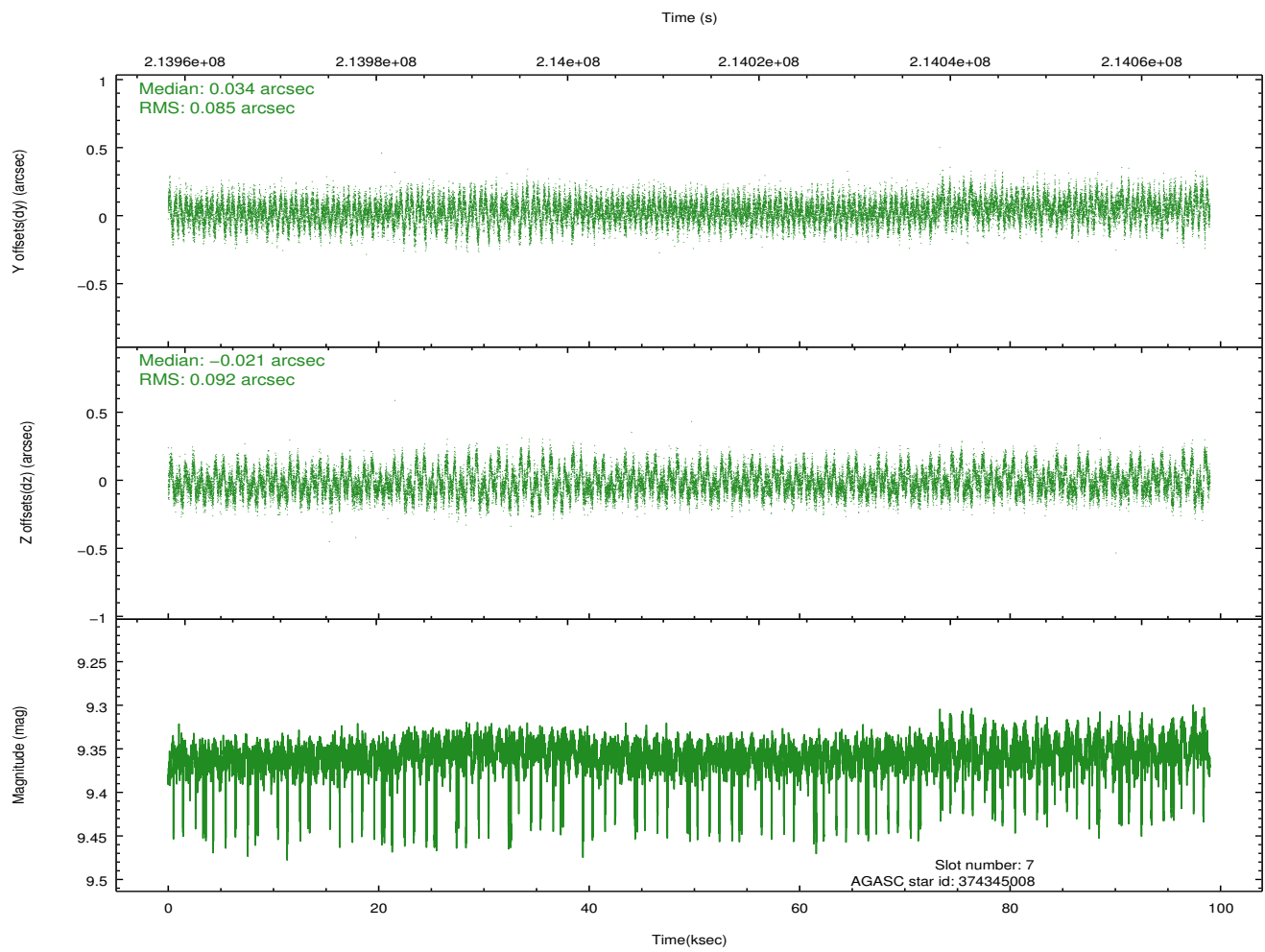
2.4.3 Slot 5



2.4.4 Slot 6

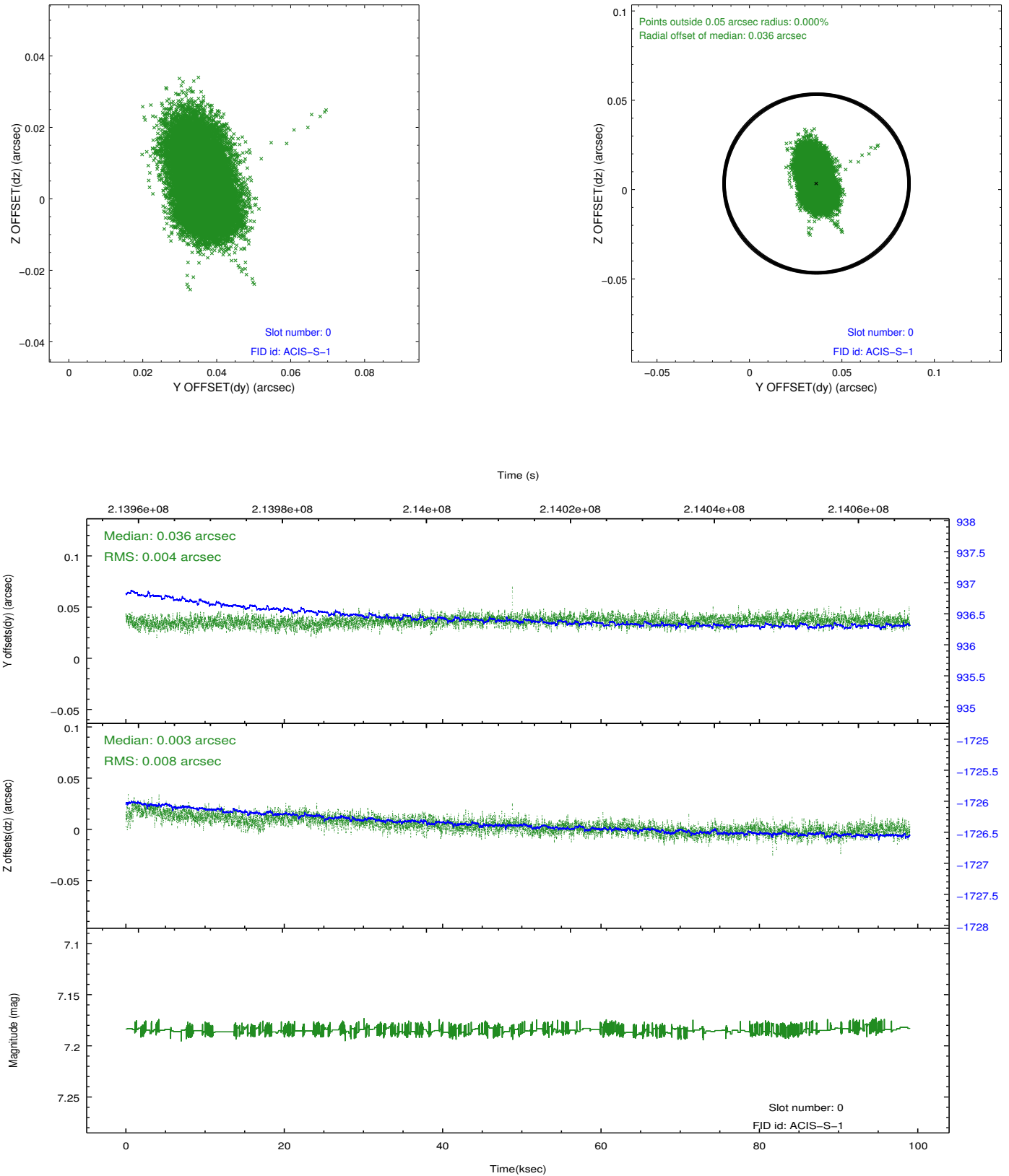


2.4.5 Slot 7

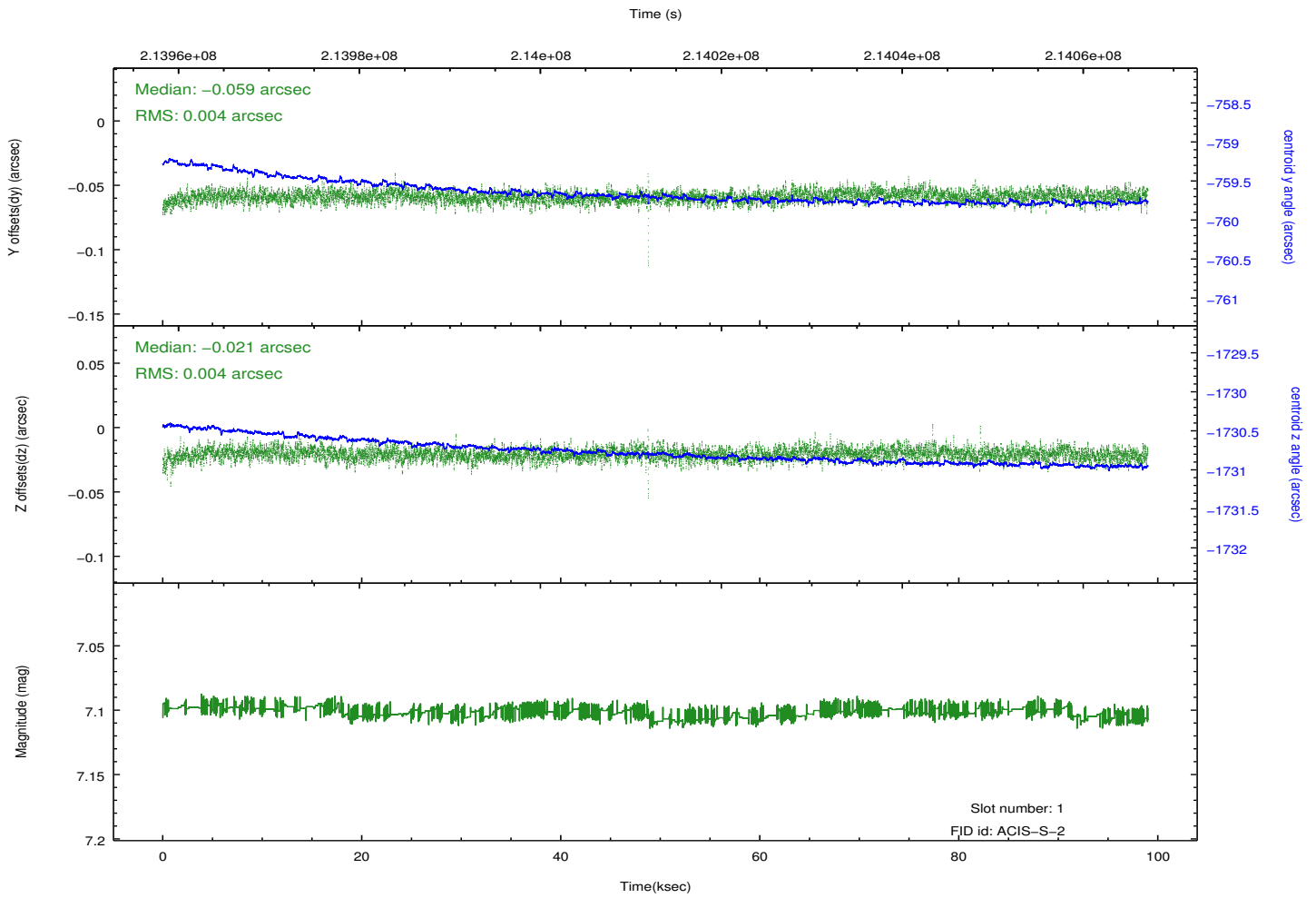
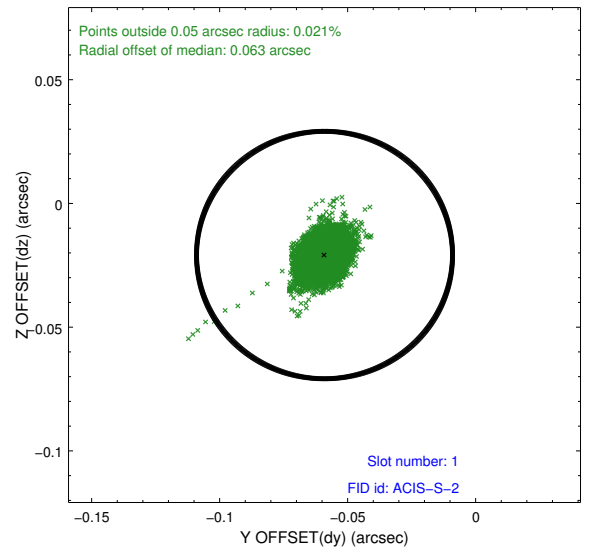
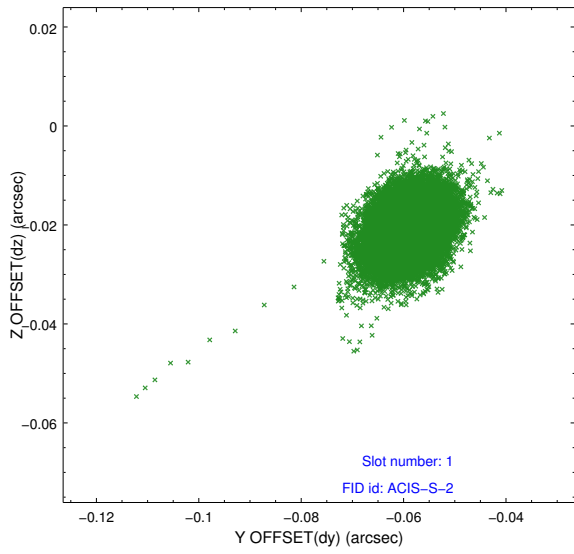


2.5 FID Slots

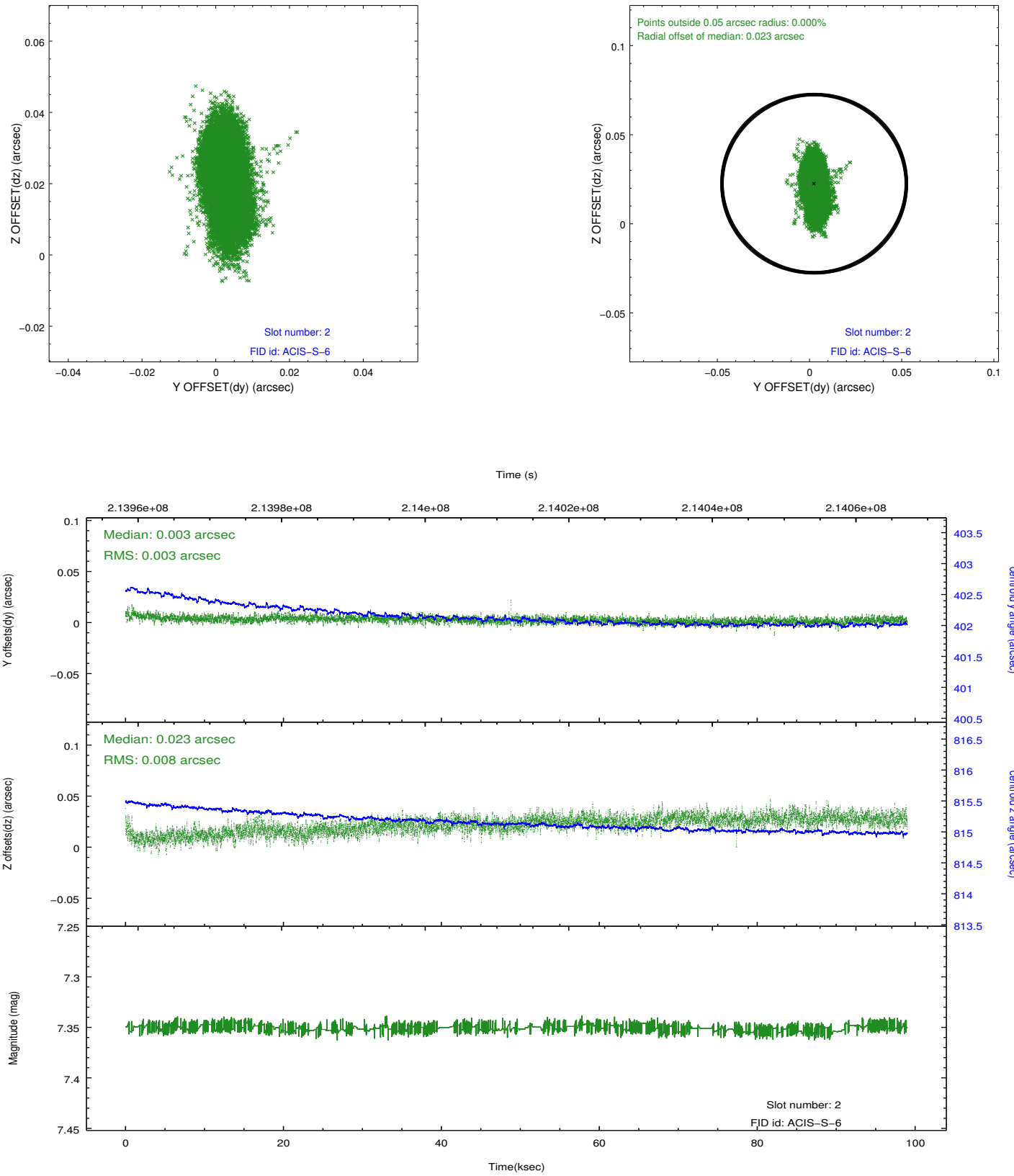
2.5.1 Slot 0



2.5.2 Slot 1



2.5.3 Slot 2



A Summary

A.1 Status

V&V Scientist	Jen Lauer
V&V Date (YYYY-MM-DD)	2013.01.03
V&V Edition	1
V&V Disposition and Status	OK
V&V Charge Time	98.199

A.2 Comments