

V&V Reference Report

L2 ASCDS Version : 8.5

Observation 5030 - L2 Version 3
Chandra X-Ray Center

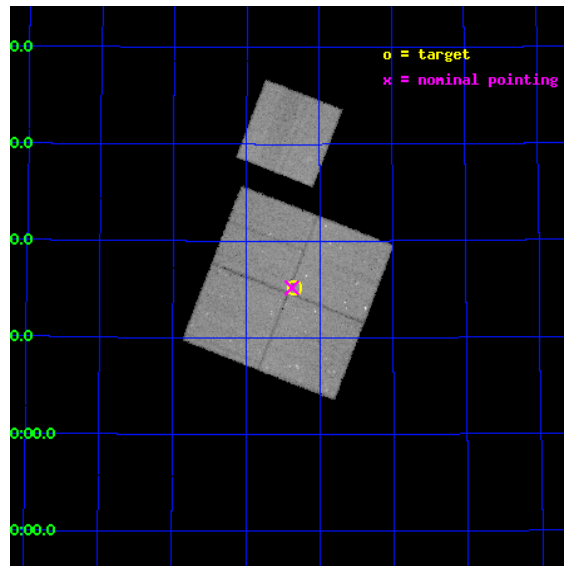
L2 Processing Date : Dec 9 2012

Contents

1	Front	2
2	OBI	3
2.1	OBI	3
2.1.1	Images	3
2.1.2	Bias	3
2.1.3	Parameters	4
2.1.4	Events	4
2.2	Compared Parameters	5
2.3	Aspect	6
2.4	Star Slots	9
2.4.1	Slot 3	9
2.4.2	Slot 4	10
2.4.3	Slot 5	11
2.4.4	Slot 6	12
2.4.5	Slot 7	13
2.5	FID Slots	14
2.5.1	Slot 0	14
2.5.2	Slot 1	15
2.5.3	Slot 2	16
A	Summary	17
A.1	Status	17
A.2	Comments	17

1 Front

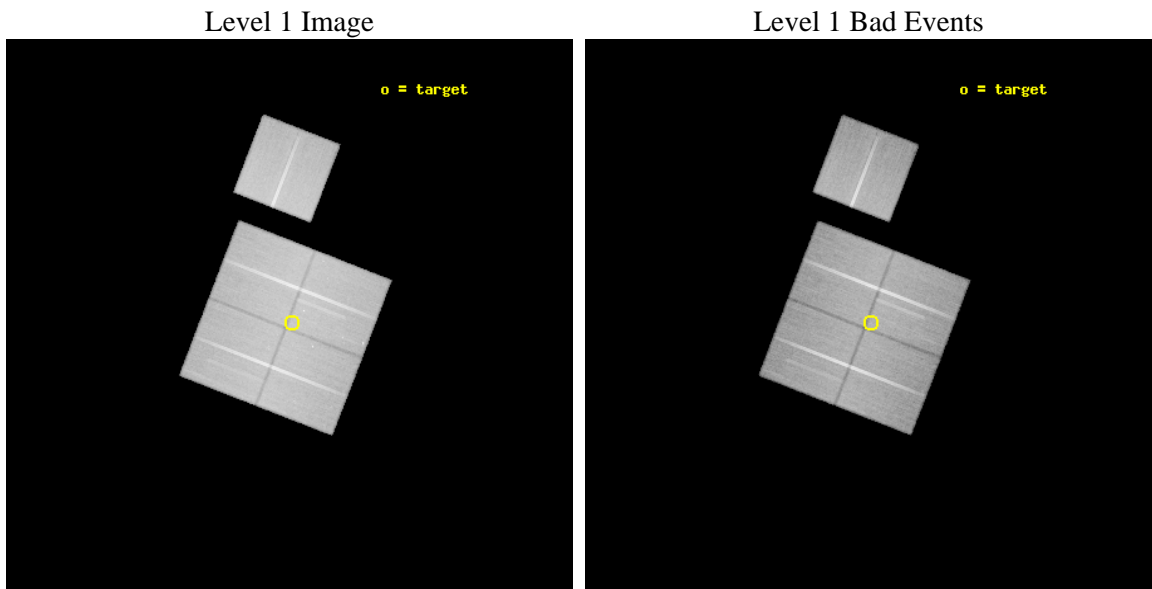
seq_num	900337	Sequence number
obs_id	5030	Observation id
title	The Balance of Power between Starbursts and AGN: a Chandra/SIRTf Survey.	Proposal title
observer	Dr. Belinda Wilkes	Principal investigator
object	SWIRE LOCKMAN 8	Source name
dtycycle	0	
cycle	P	events from which exps? Prim/Second/Both
ra_targ	161.33567	Observer's specified target RA [deg]
dec_targ	59.2531	Observer's specified target Dec [deg]
ra_nom	161.34478301459	Nominal RA [deg]
dec_nom	59.252966086846	Nominal Dec [deg]
roll_nom	21.200847130895	Nominal Roll [deg]
revision	3	Processing version of data
ontime	66618.91791144	Sum of GTIs [s]
livetime	65748.492704793	Livetime [s]
ontime0	66609.495020717	Sum of GTIs [s]
ontime1	66615.776951253	Sum of GTIs [s]
ontime2	66615.776941329	Sum of GTIs [s]
ontime3	66618.91791144	Sum of GTIs [s]
ontime6	66622.05888173	Sum of GTIs [s]
l2events	256556	Number of level 2 events



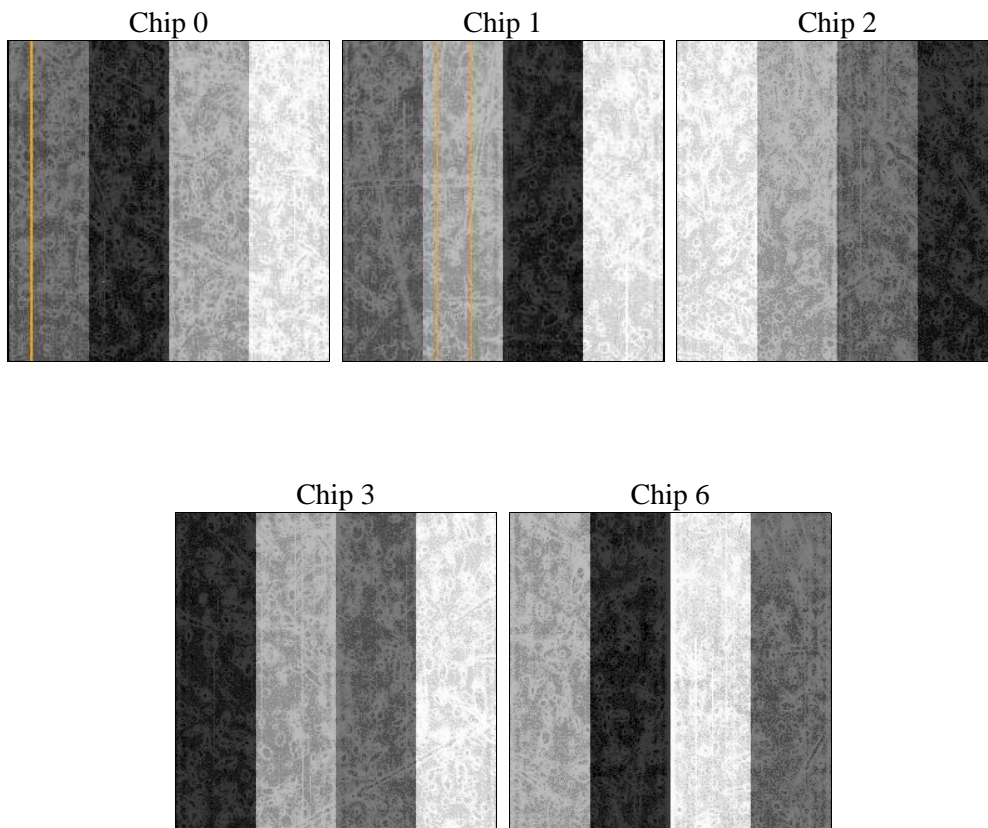
2 OBI

2.1 OBI

2.1.1 Images



2.1.2 Bias



2.1.3 Parameters

obi_num	1	Obi number	sched_exp_time	66500.000000	[s] Scheduled observation exposure time
ascdsver	8.5	Processing system revision	ontime	66618.91791144	Sum of GTIs [s]
caldbver	4.5.4	 	ontime0	66609.495020717	Sum of GTIs [s]
date	2012-12-09T10:06:32	Date and time of file creation	ontime1	66615.776951253	Sum of GTIs [s]
revision	3	Processing version of data	ontime2	66615.776941329	Sum of GTIs [s]
			ontime3	66618.91791144	Sum of GTIs [s]
			ontime6	66622.05888173	Sum of GTIs [s]
			l1events	2499505	Number of level 1 events

2.1.4 Events

	ccd 0	ccd 1	ccd 2	ccd 3	ccd 6
level 1 events	479545	482066	513455	513103	511336
rejected events	419340	418533	455598	453415	454144
rejected %	87%	86%	88%	88%	88%

	ccd 0	ccd 1	ccd 2	ccd 3	ccd 6
grade 0 events	26063	25999	26076	26906	22446
	5%	5%	5%	5%	4%
grade 1 events	288	255	311	323	226
	0%	0%	0%	0%	0%
grade 2 events	13224	13987	11936	11747	12360
	2%	2%	2%	2%	2%
grade 3 events	6176	6423	5556	5978	5942
	1%	1%	1%	1%	1%
grade 4 events	5626	6257	5792	5886	5833
	1%	1%	1%	1%	1%
grade 5 events	20800	21907	20258	23296	23482
	4%	4%	3%	4%	4%
grade 6 events	10537	12482	9876	10630	12010
	2%	2%	1%	2%	2%
grade 7 events	396831	394756	433650	428337	429037
	82%	81%	84%	83%	83%

2.2 Compared Parameters

Parameter	Planned	Actual	Parameter	Planned	Actual
Instrument	ACIS	ACIS	Obspar format version number	7	7
Detector	ACIS-01236	ACIS-01236	Obspar file type	PREDICTED	ACTUAL
Grating	NONE	NONE	Obspar update status	NONE	UPDATED
Data mode	VFAINT	VFAINT	Number of optional ACIS chips dropped	0	0
Observation mode	POINTING	POINTING	On-chip summing requested	N	N
[deg] Pointing RA	161.311370	161.3447830145855	Subarray requested	NONE	NONE
[deg] Pointing Dec	59.231541	59.25296608684599	Alternating exposures requested	N	N
[deg] Pointing Roll	21.020877	21.20084713089511	[s] Primary exposure time	0.000000	3.1
[deg] Roll angle	19.200000	19.200000			
[deg] Roll tolerance	1.800000	1.800000			
Roll constraint allows 180D rotation	Y	Y			
[mm] SIM focus pos	-0.782348	-0.7809083437167272			
[mm] SIM defocus	0	0.001439871863259334			
[mm] SIM translation stage pos	-233.592463	-233.5874344608287			
[mm] SIM translation stage offset	0	-0.005018542100998502			
[s] Observation start time (MET)	212530651.184000	212528892.4978			
Observation start date	2004-09-25T20:16:27	2004-09-25T19:48:12			
[s] Observation end time (MET)	212597151.184000	212597284.60086			
Observation end date	2004-09-26T14:44:47	2004-09-26T14:48:04			
Read mode	TIMED	TIMED			

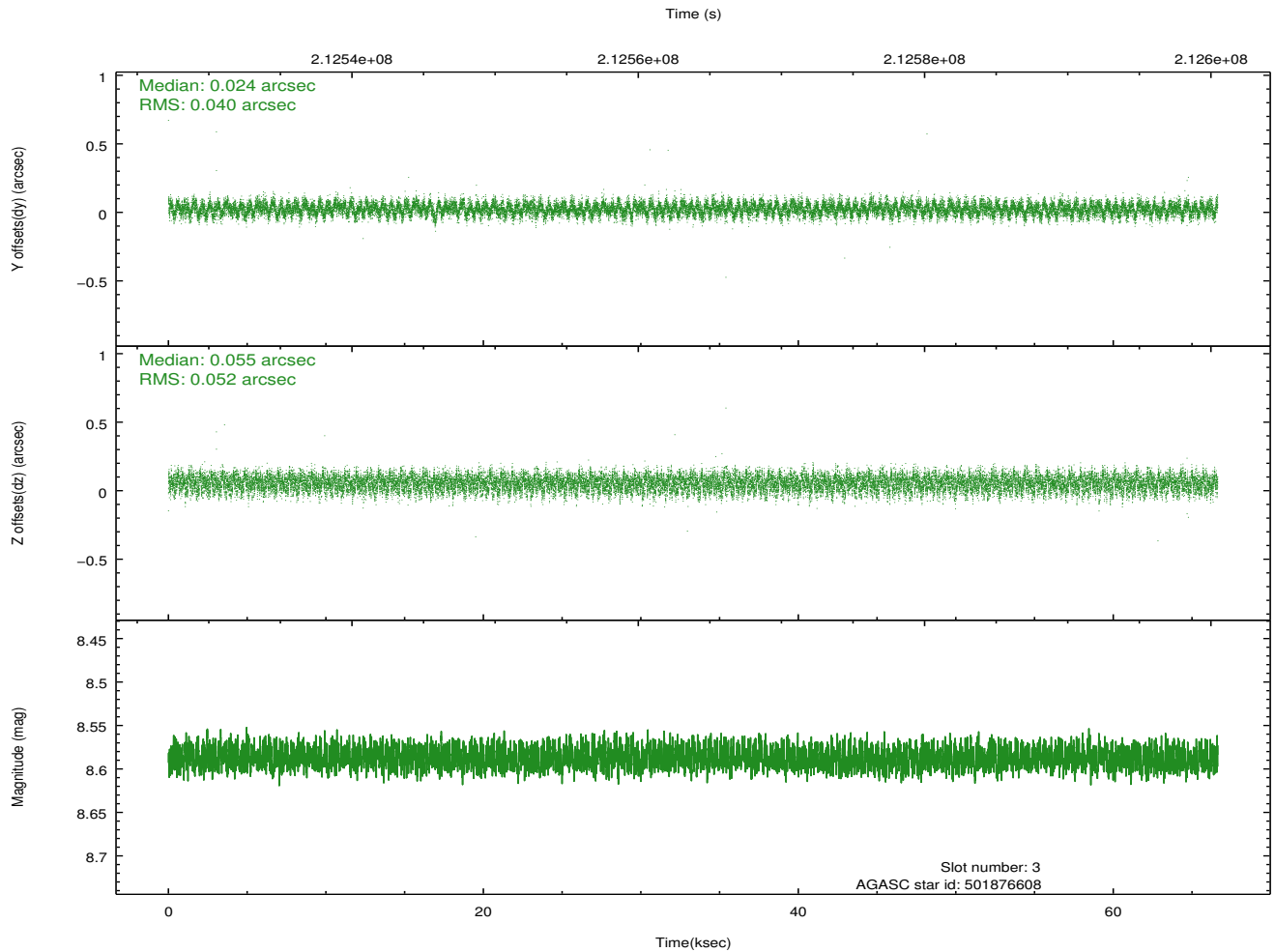
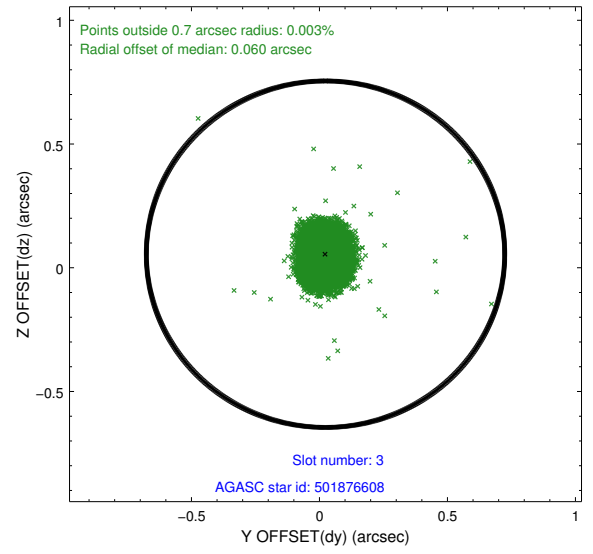
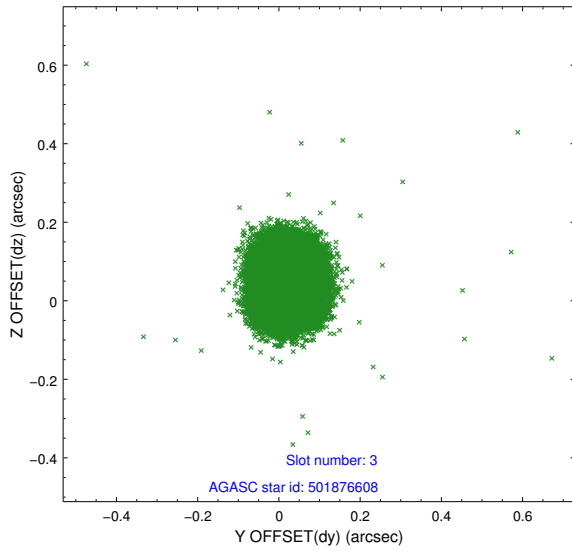
2.3 Aspect

Slot Statistics

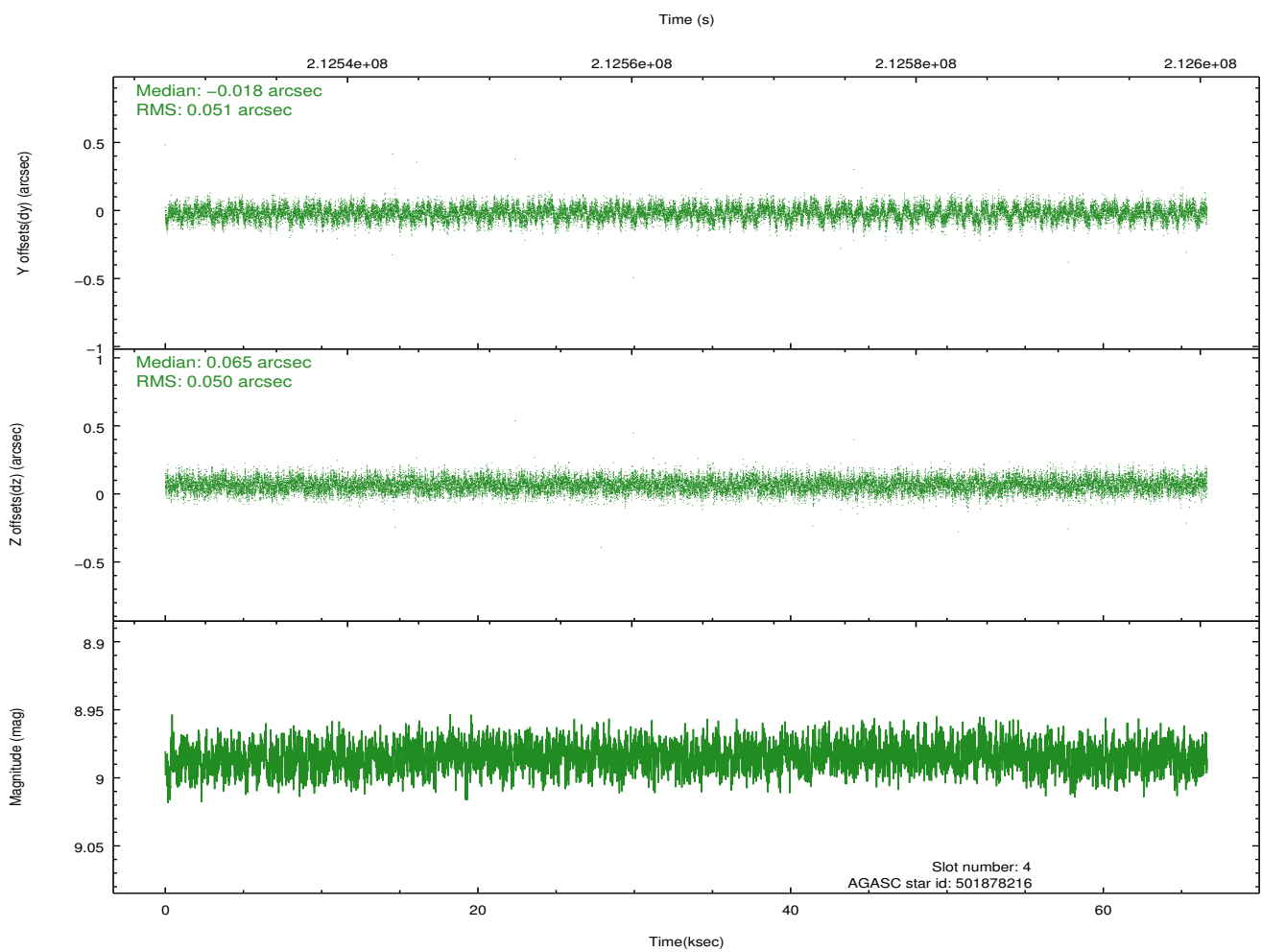
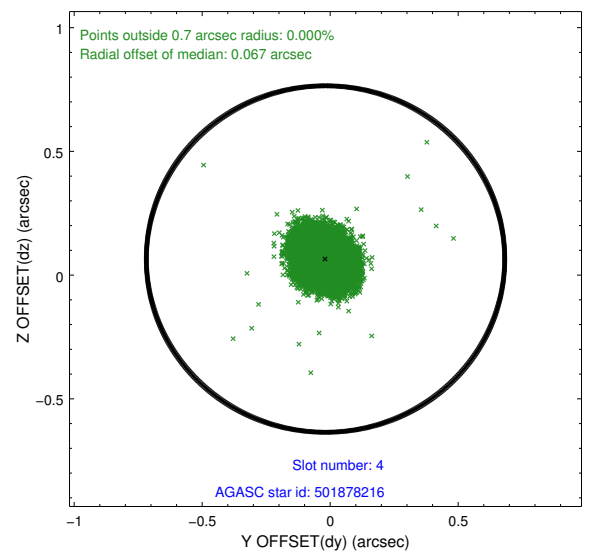
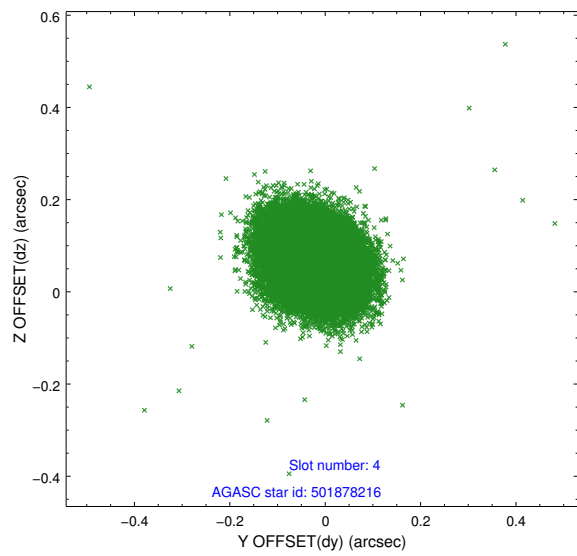
slot	status	id	mag	n_pts	med_dy	med_dz	dr1	dr2	ra	dec	mean_y	mean_z
0	FID	ACIS-I-1	7.24	16250	-0.058	-0.007	0.012	0.019	0.000000	0.000000	931.92	-835.36
1	FID	ACIS-I-2	7.15	16250	-0.130	-0.048	0.015	0.025	0.000000	0.000000	-762.27	-841.81
2	FID	ACIS-I-4	7.17	16250	0.089	0.122	0.013	0.027	0.000000	0.000000	2152.00	1064.59
3	GUIDE	501876608	8.59	32494	0.024	0.055	0.070	0.111	161.204341	58.717464	-850.38	-1655.55
4	GUIDE	501878216	8.98	32487	-0.018	0.065	0.075	0.122	161.663048	59.249982	628.89	-168.47
5	GUIDE	501878576	7.85	32501	-0.063	0.059	0.051	0.083	161.532118	59.060873	161.51	-719.28
6	GUIDE	501880360	8.29	32367	-0.124	-0.072	0.053	0.085	161.850113	59.665463	1476.21	1110.60
7	GUIDE	501882104	8.43	32492	0.184	-0.103	0.067	0.108	160.237120	59.342503	-1691.60	1094.43

2.4 Star Slots

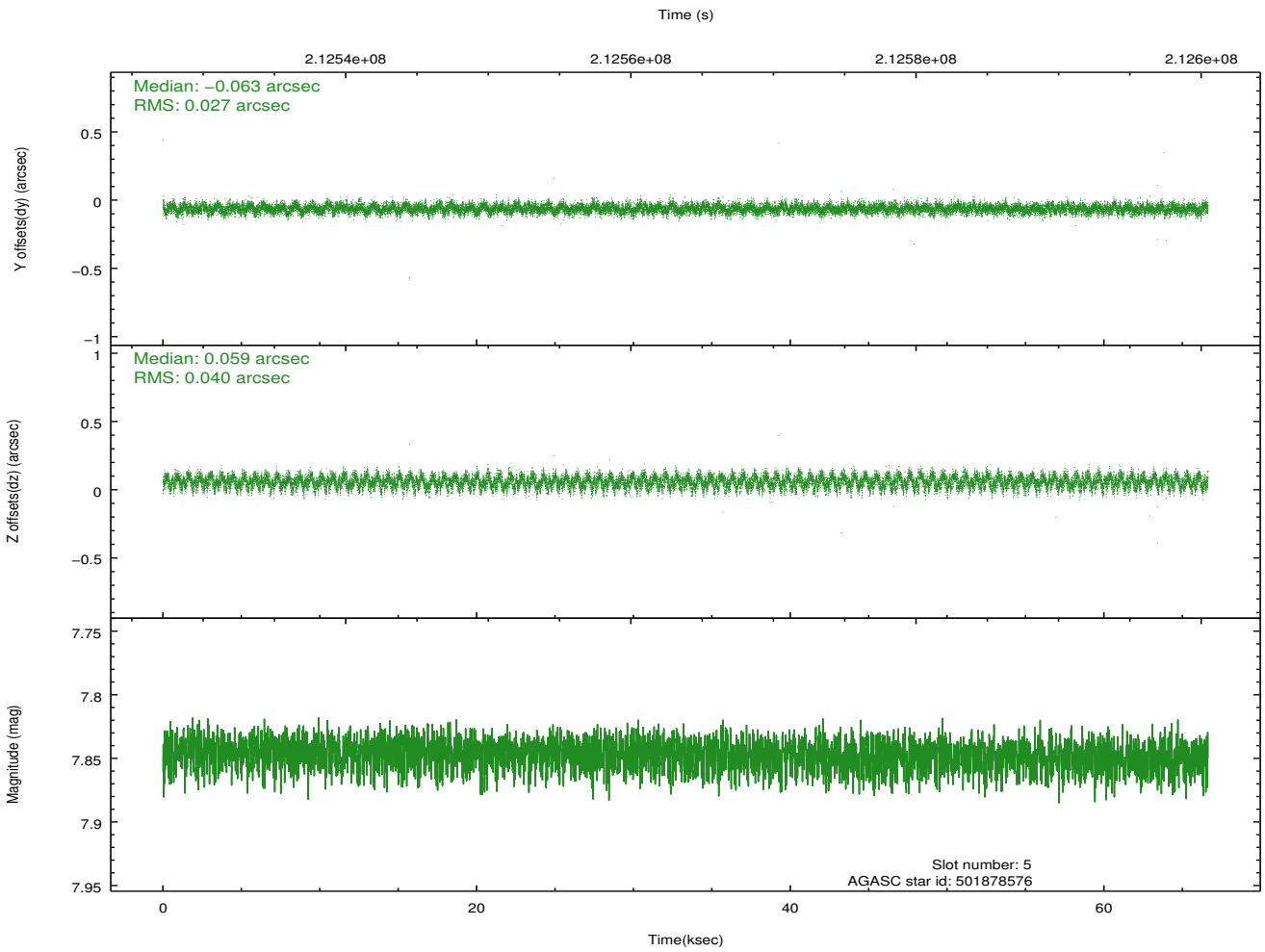
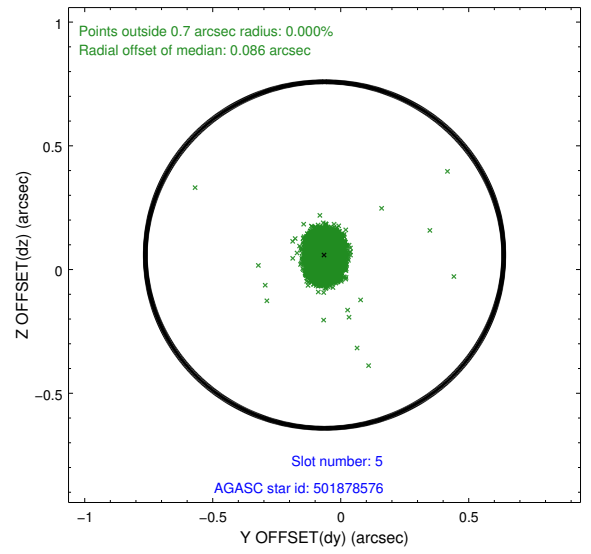
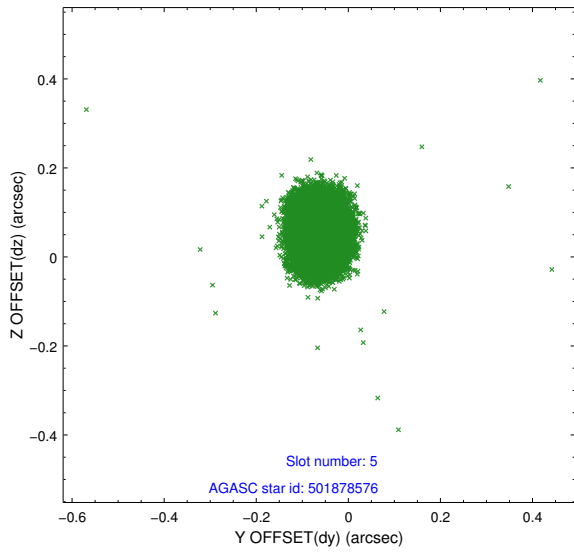
2.4.1 Slot 3



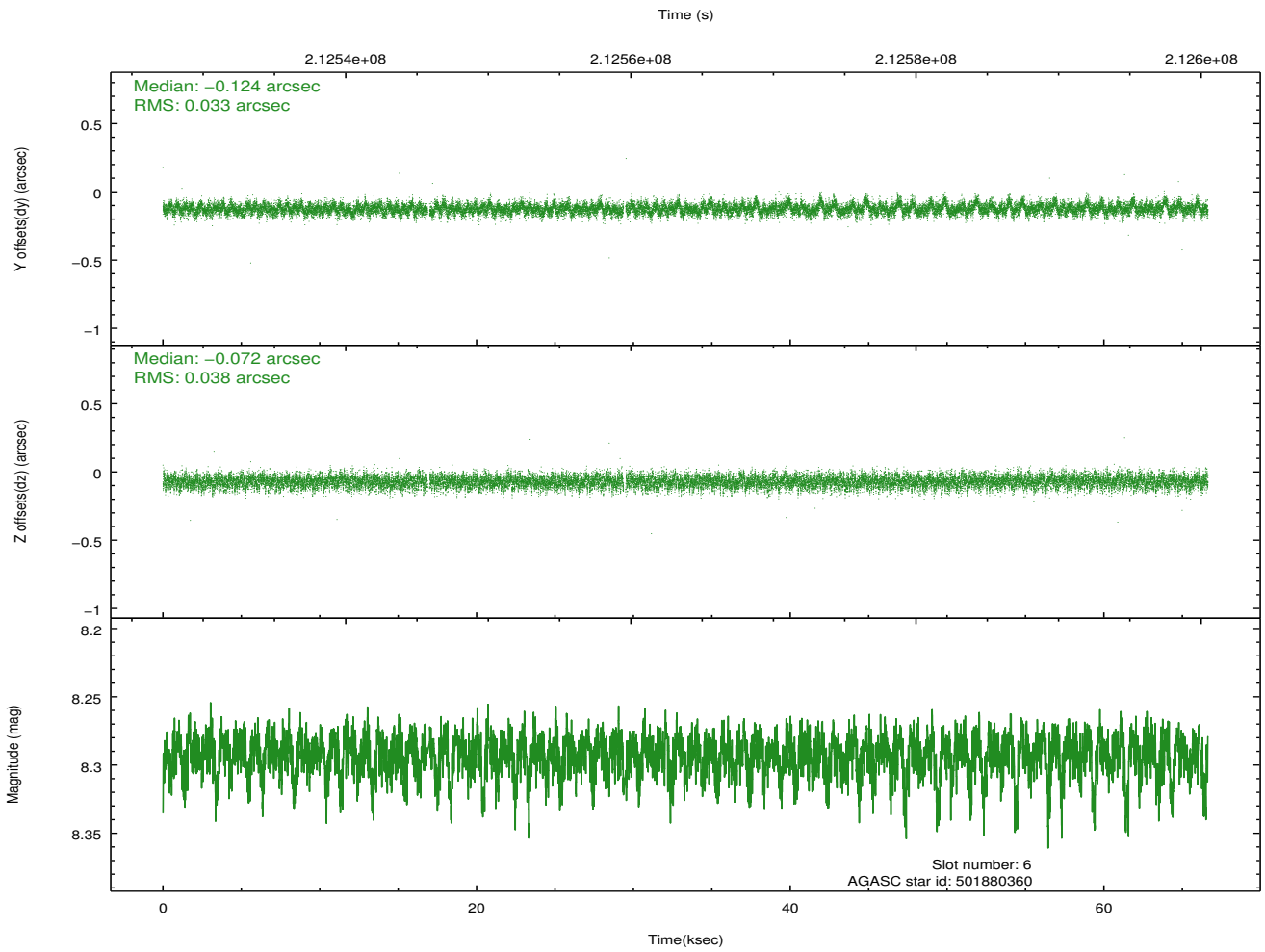
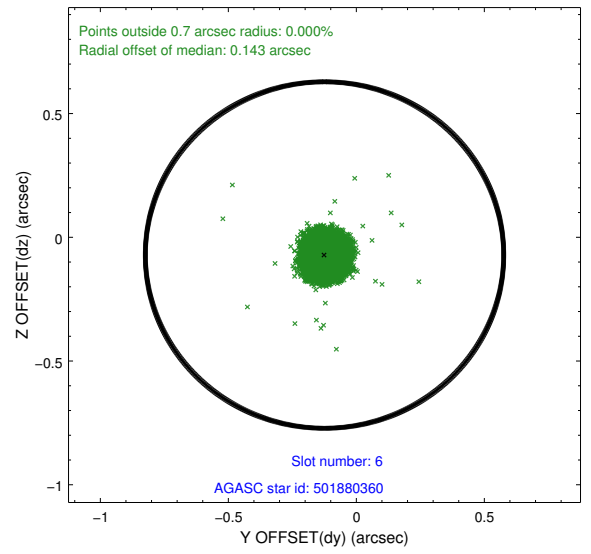
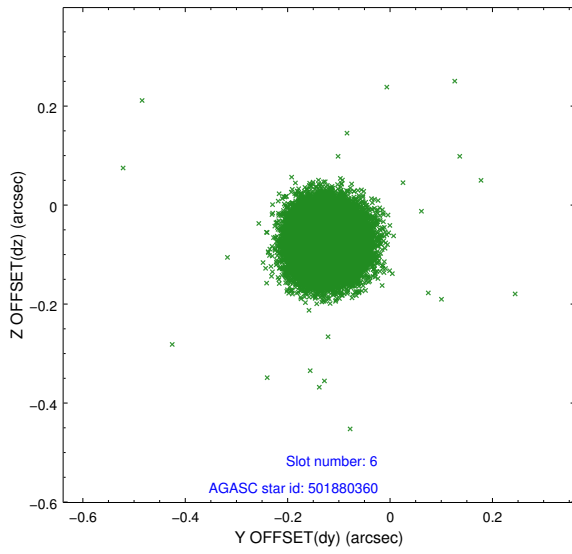
2.4.2 Slot 4



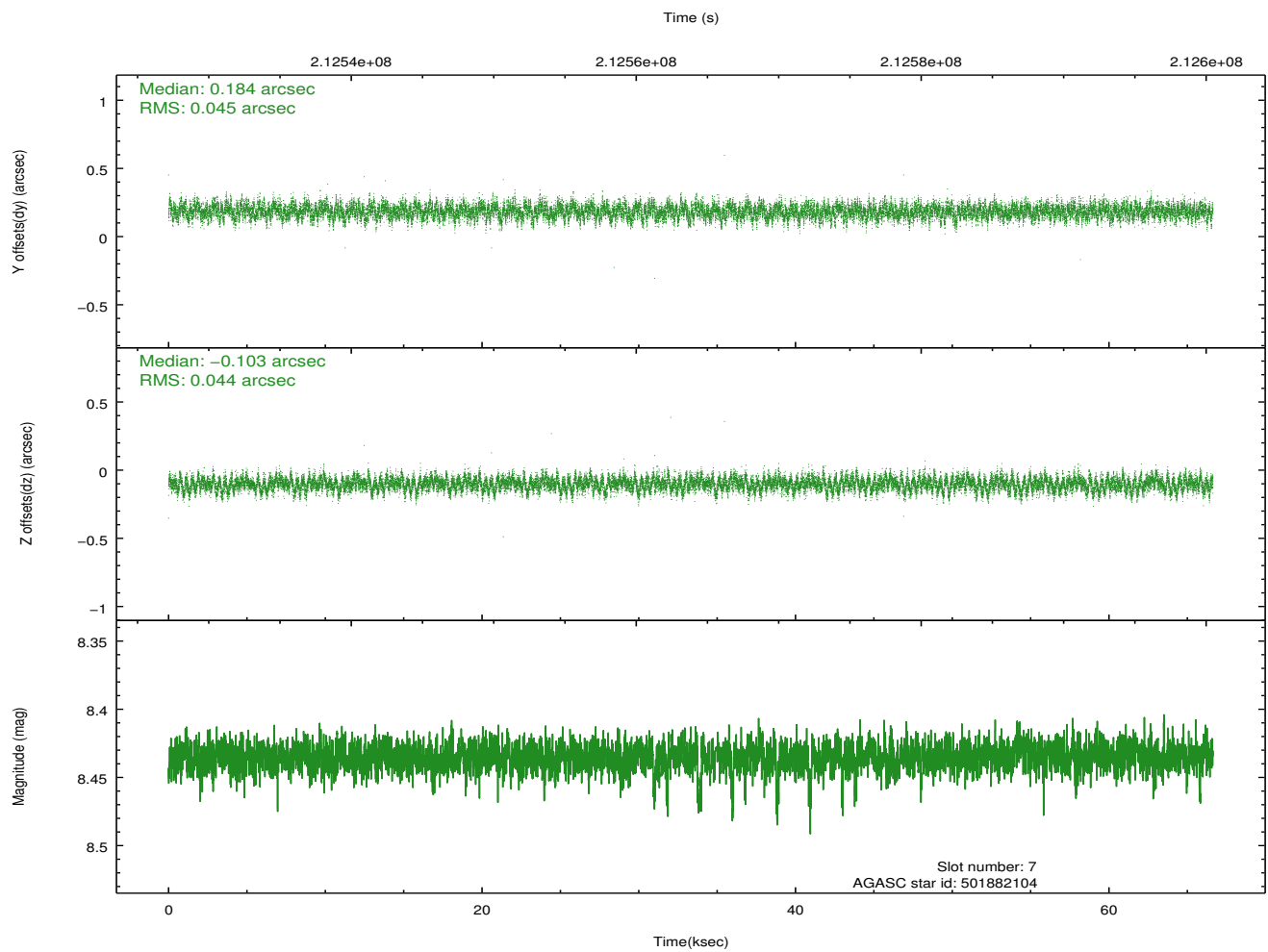
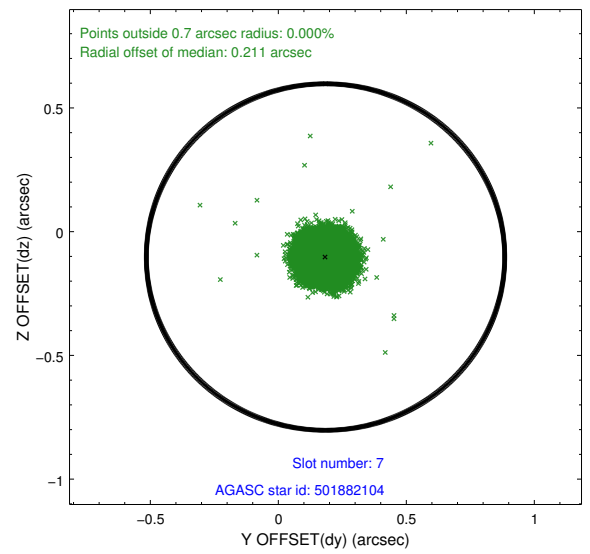
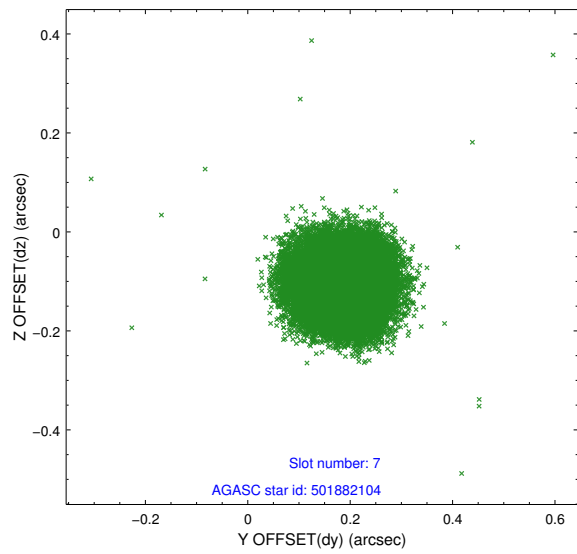
2.4.3 Slot 5



2.4.4 Slot 6

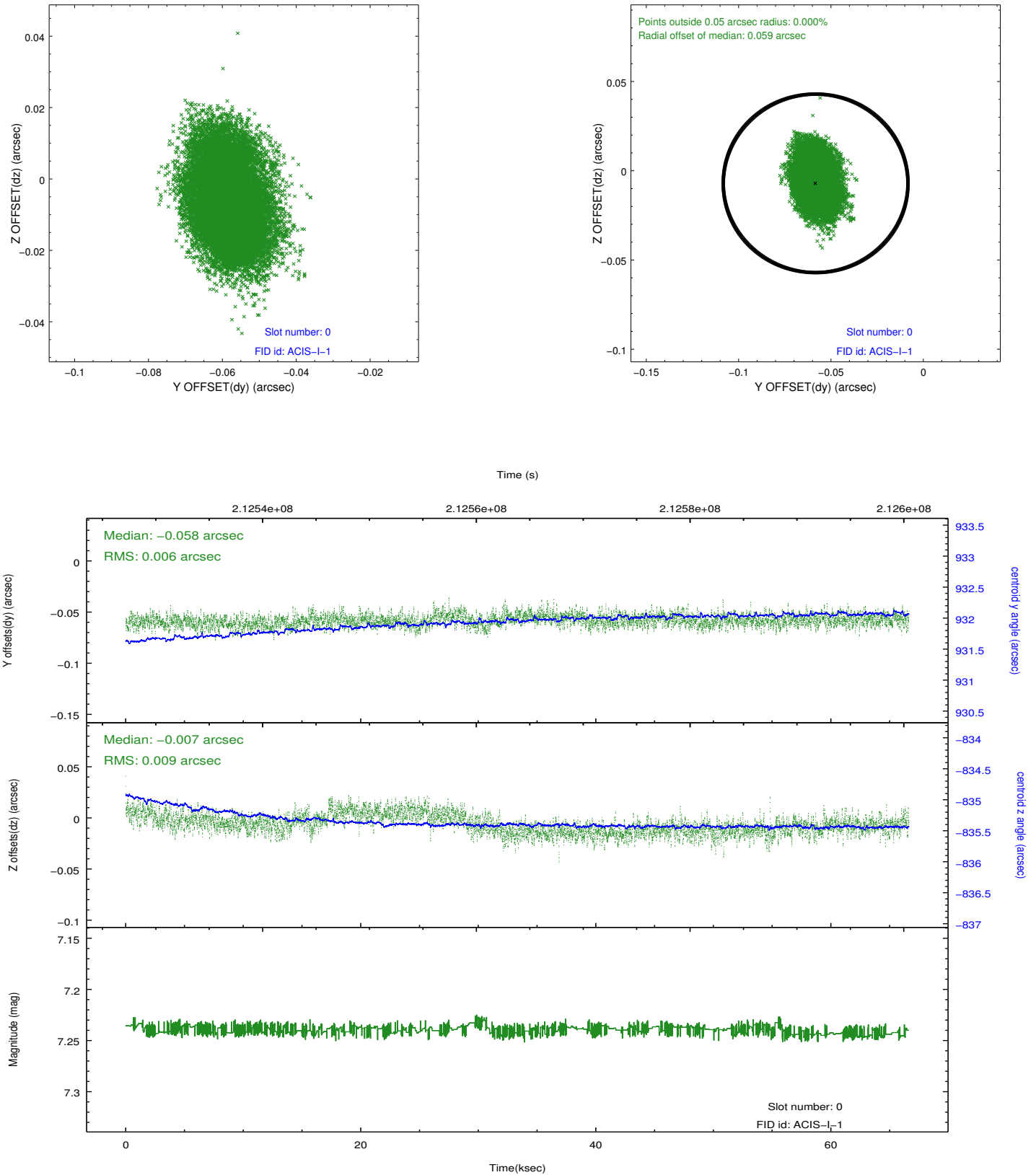


2.4.5 Slot 7

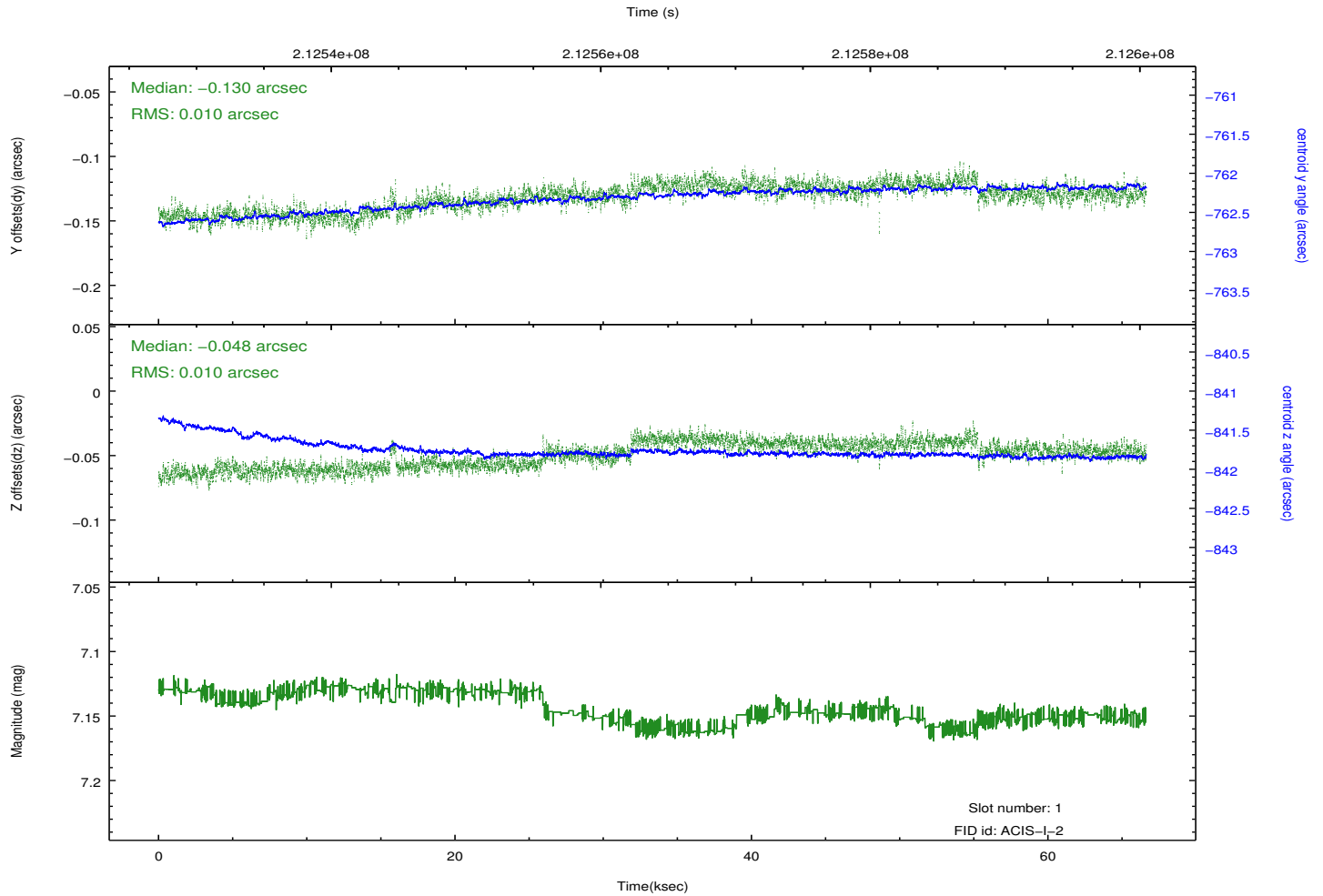
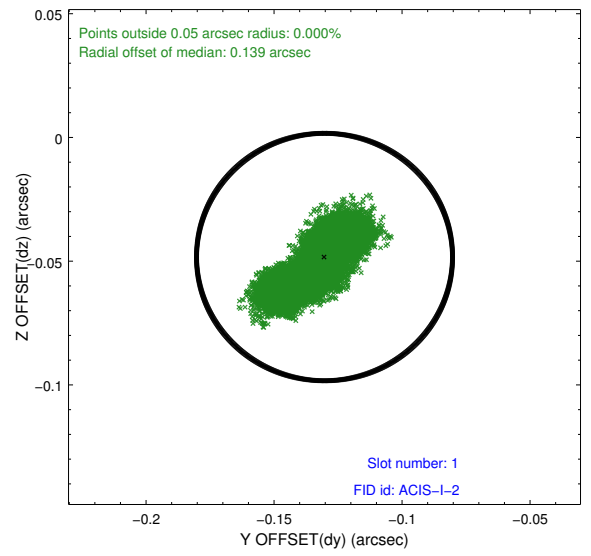
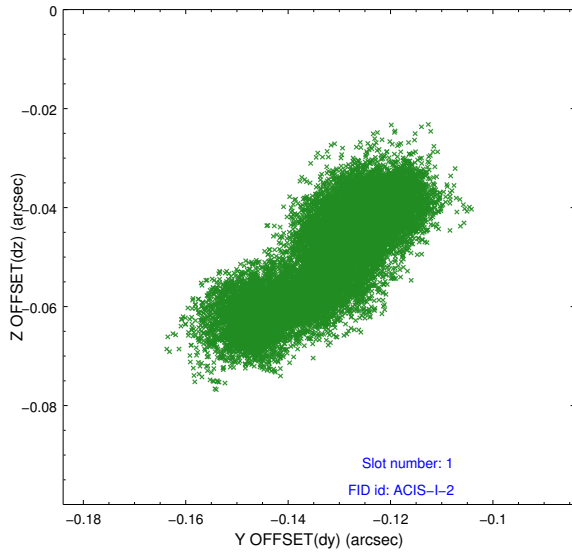


2.5 FID Slots

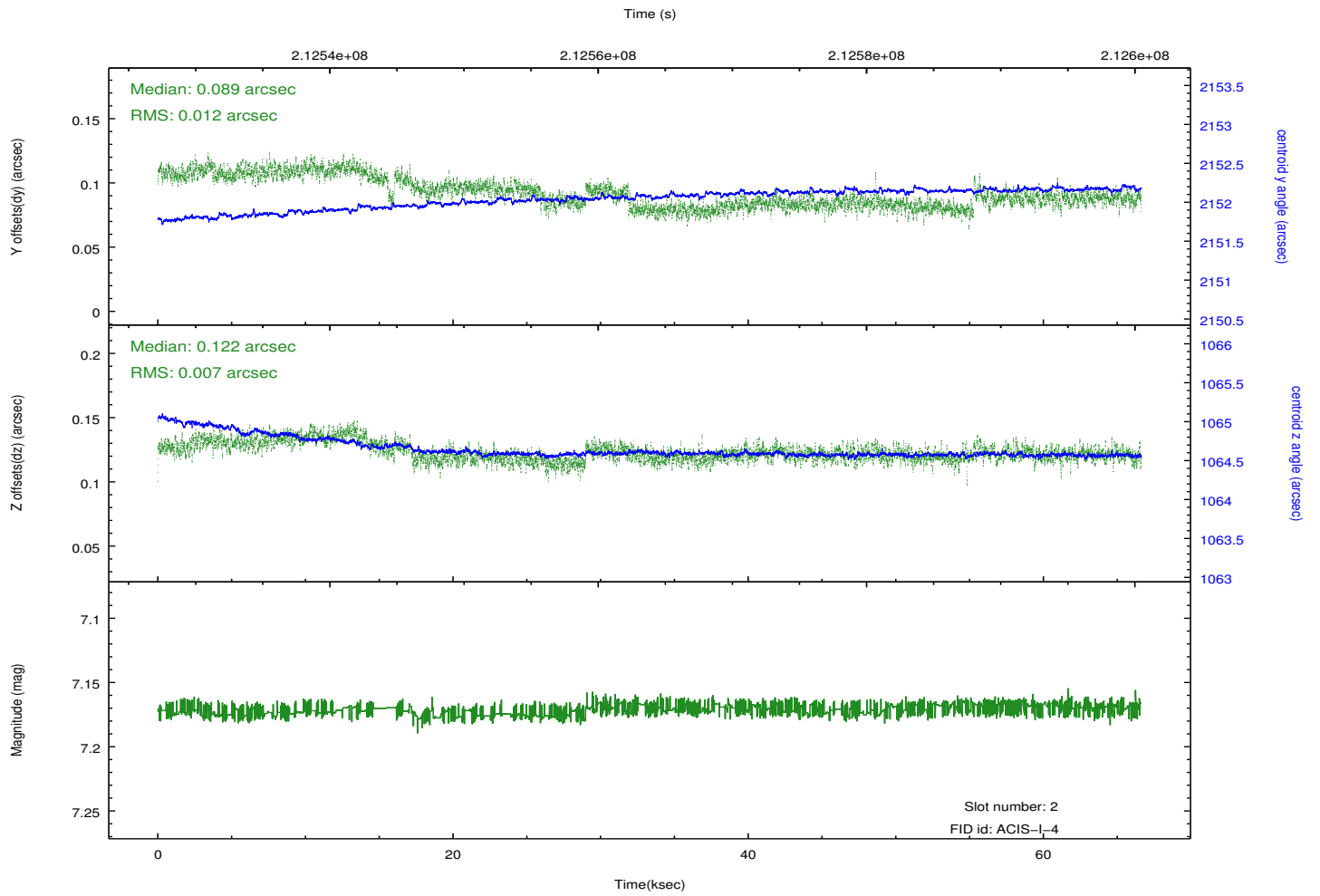
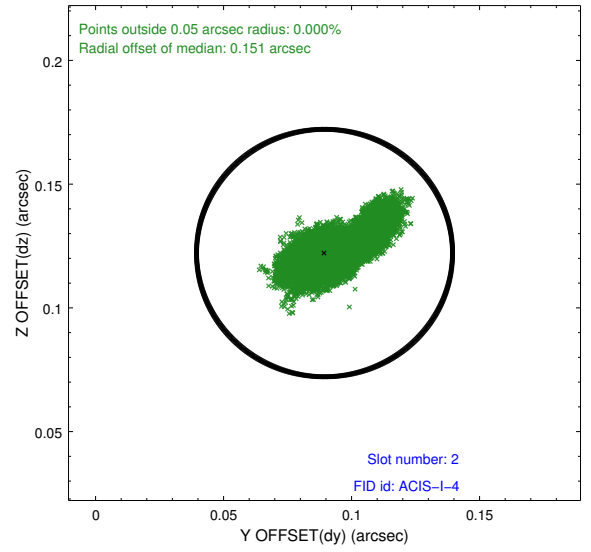
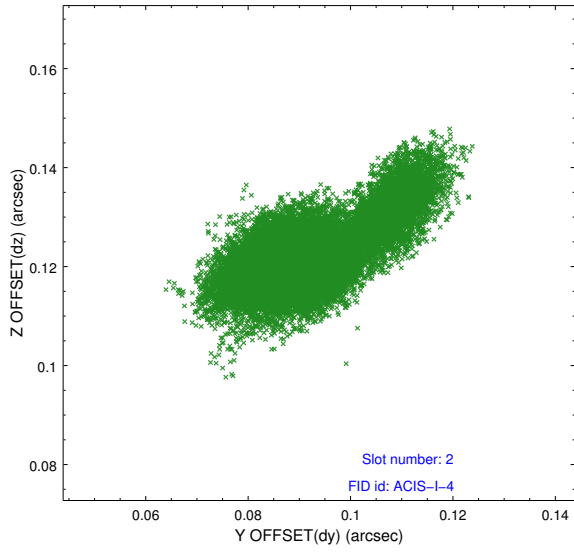
2.5.1 Slot 0



2.5.2 Slot 1



2.5.3 Slot 2



A Summary

A.1 Status

V&V Scientist	Beth Sundheim
V&V Date (YYYY-MM-DD)	2013.01.02
V&V Edition	1
V&V Disposition and Status	OK
V&V Charge Time	66.618

A.2 Comments

Joint proposal with NOAO.

Roll preference was not met (angle is 0.2 degrees outside requested range.)