

V&V Reference Report

L2 ASCDS Version : 8.4.3

Observation 5390 - L2 Version 2
Chandra X-Ray Center

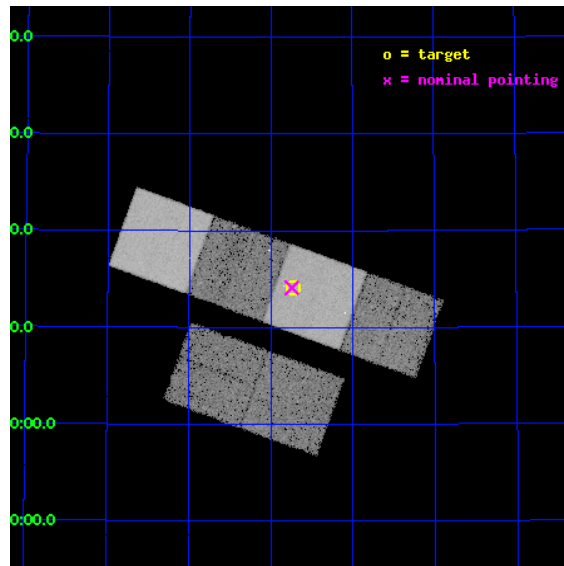
L2 Processing Date : Mar 28 2012

Contents

1	Front	2
2	OBI	3
2.1	OBI	3
2.1.1	Images	3
2.1.2	Bias	3
2.1.3	Parameters	4
2.1.4	Events	4
2.2	Compared Parameters	5
2.3	Aspect	6
2.4	Star Slots	9
2.4.1	Slot 3	9
2.4.2	Slot 4	10
2.4.3	Slot 5	11
2.4.4	Slot 6	12
2.4.5	Slot 7	13
2.5	FID Slots	14
2.5.1	Slot 0	14
2.5.2	Slot 1	15
2.5.3	Slot 2	16
A	Summary	17
A.1	Status	17
A.2	Comments	17

1 Front

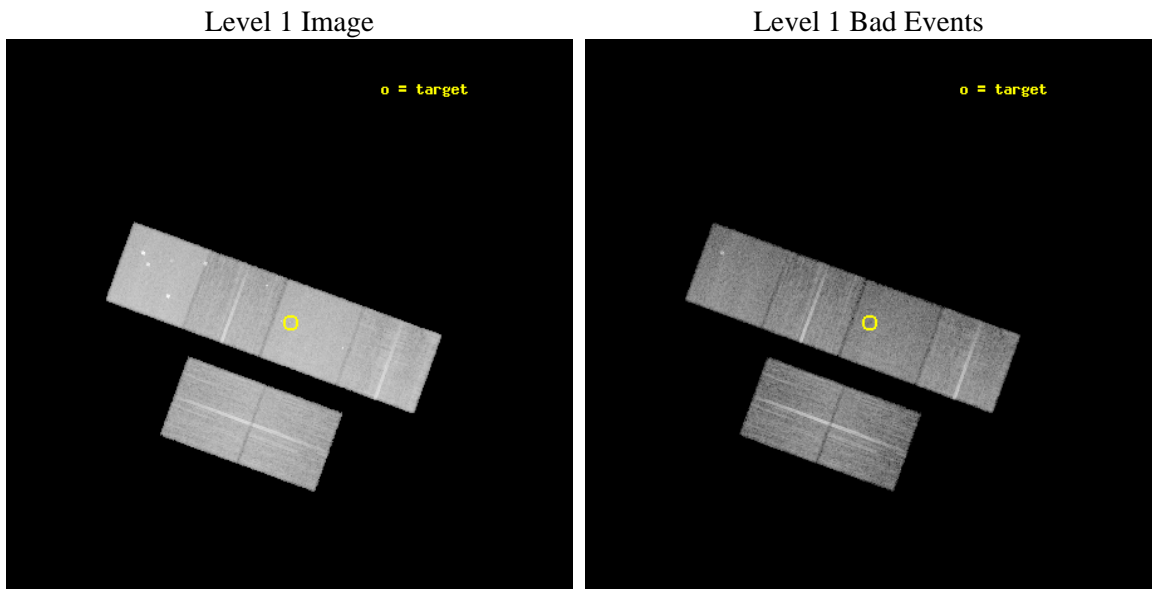
seq_num	200325	Sequence number
obs_id	5390	Observation id
title	The puzzle of X-ray emission from magnetic stars without convective envelopes	Proposal title
observer	Prof. Jurgen Schmitt	Principal investigator
object	HD 217833	Source name
dtcycle	0	
cycle	P	events from which exps? Prim/Second/Both
ra_targ	345.682917	Observer's specified target RA [deg]
dec_targ	55.236389	Observer's specified target Dec [deg]
ra_nom	345.6860194234	Nominal RA [deg]
dec_nom	55.23523732947	Nominal Dec [deg]
roll_nom	19.962763519309	Nominal Roll [deg]
revision	2	Processing version of data
ontime	14953.599944293	Sum of GTIs [s]
livetime	14764.248457822	Livetime [s]
ontime2	14953.599944293	Sum of GTIs [s]
ontime3	14953.599944293	Sum of GTIs [s]
ontime5	14953.599944293	Sum of GTIs [s]
ontime6	14953.599944293	Sum of GTIs [s]
ontime7	14953.599944293	Sum of GTIs [s]
ontime8	14953.599944293	Sum of GTIs [s]
l2events	215639	Number of level 2 events



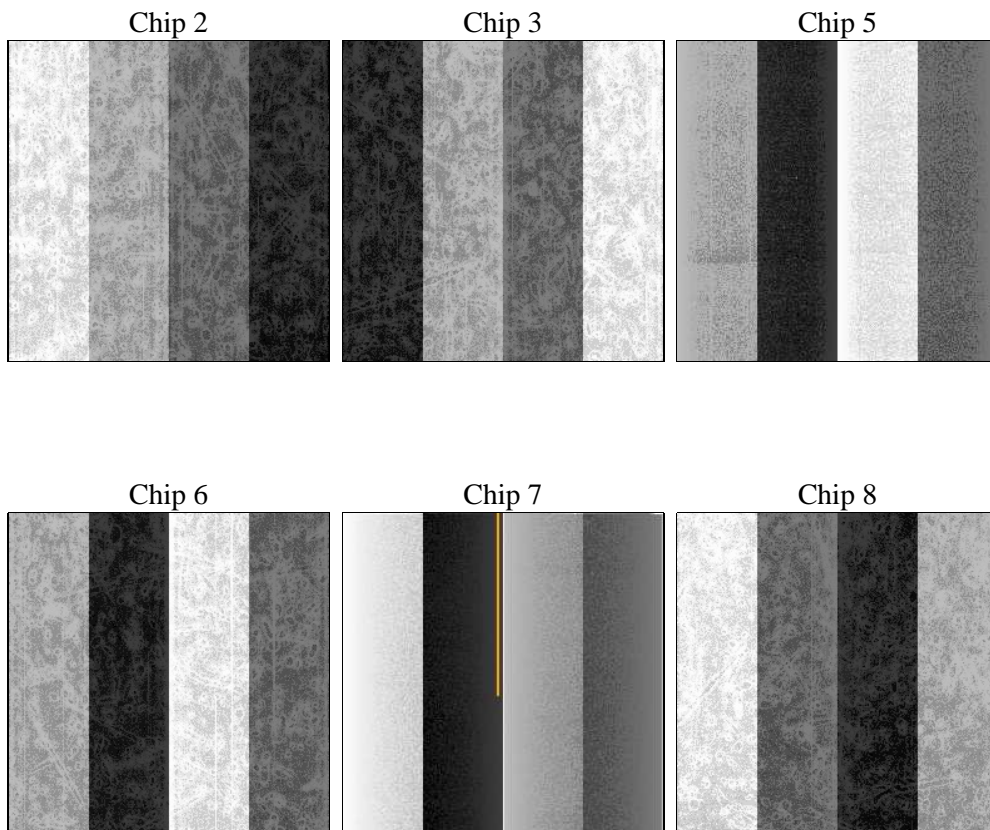
2 OBI

2.1 OBI

2.1.1 Images



2.1.2 Bias



2.1.3 Parameters

obi_num	1	Obi number	sched_exp_time	15000.000000	[s] Scheduled observation exposure time
ascdsver	8.4.3	Processing system revision	ontime	14953.599944293	Sum of GTIs [s]
caldsver	4.4.8	 	ontime2	14953.599944293	Sum of GTIs [s]
date	2012-03-28T21:25:44	Date and time of file creation	ontime3	14953.599944293	Sum of GTIs [s]
revision	2	Processing version of data	ontime5	14953.599944293	Sum of GTIs [s]
			ontime6	14953.599944293	Sum of GTIs [s]
			ontime7	14953.599944293	Sum of GTIs [s]
			ontime8	14953.599944293	Sum of GTIs [s]
			l1events	942531	Number of level 1 events

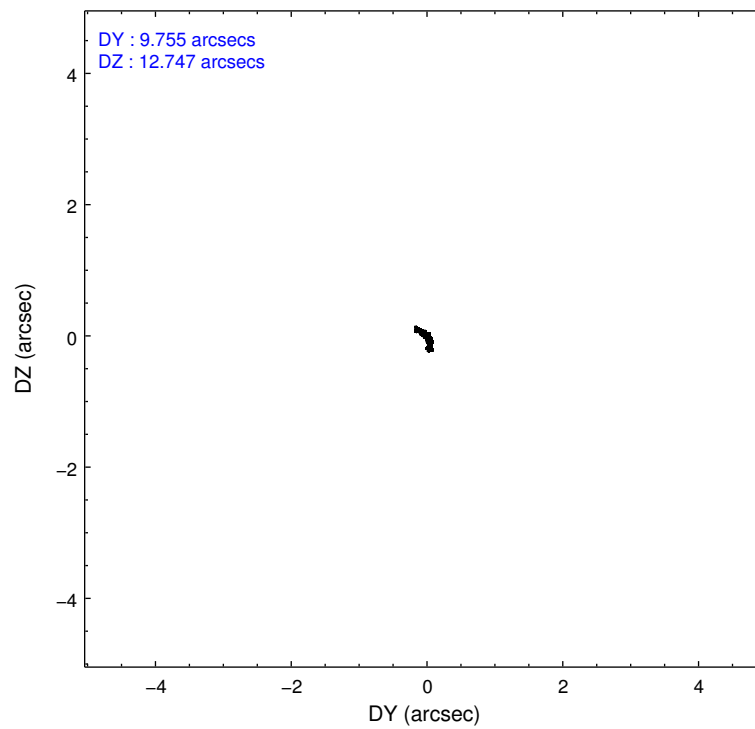
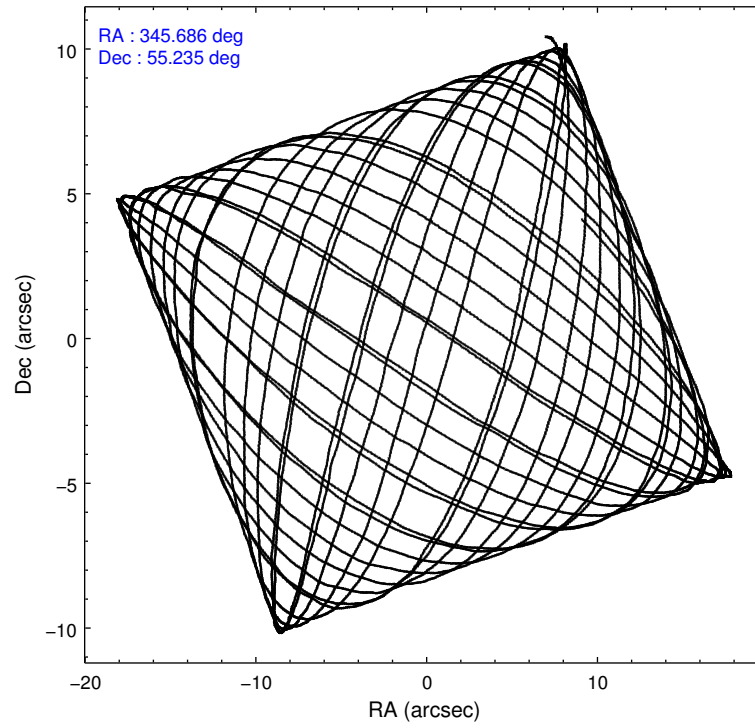
2.1.4 Events

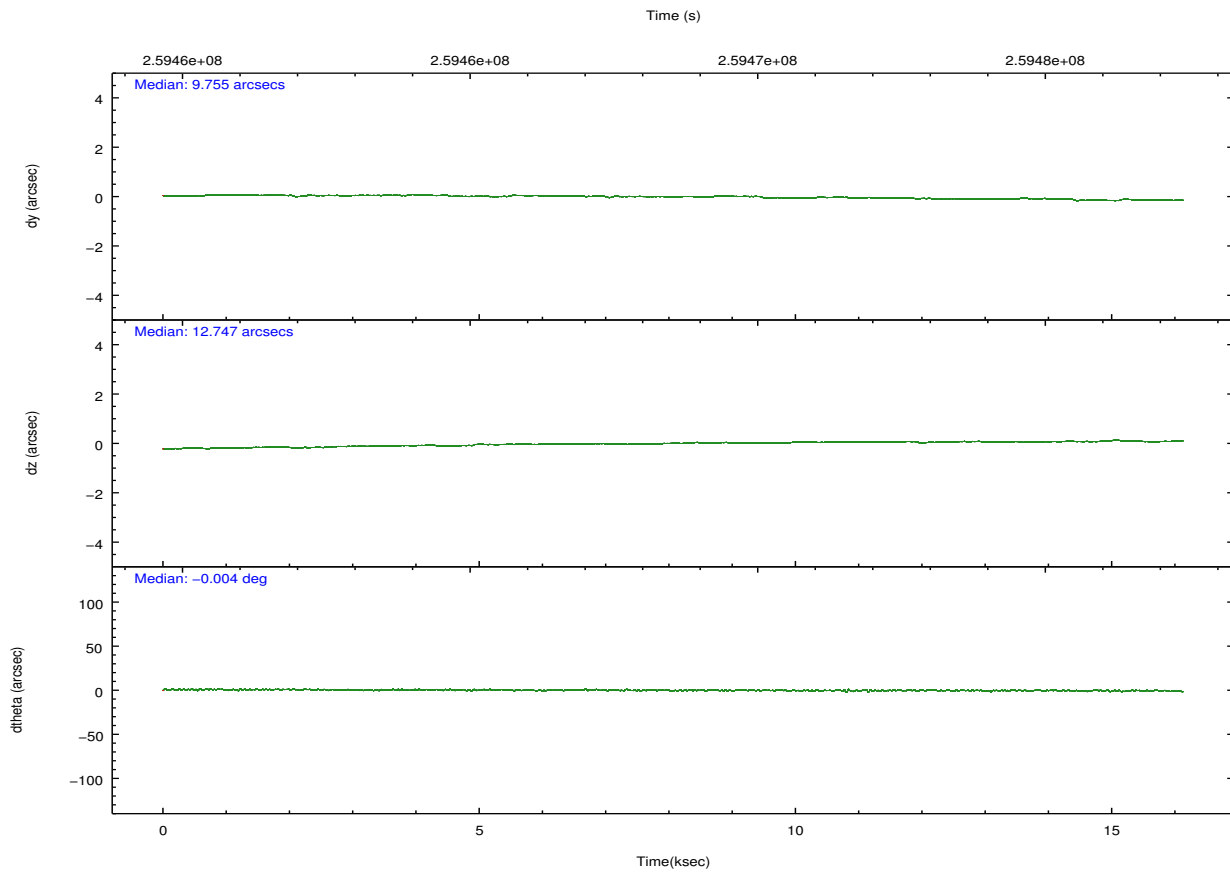
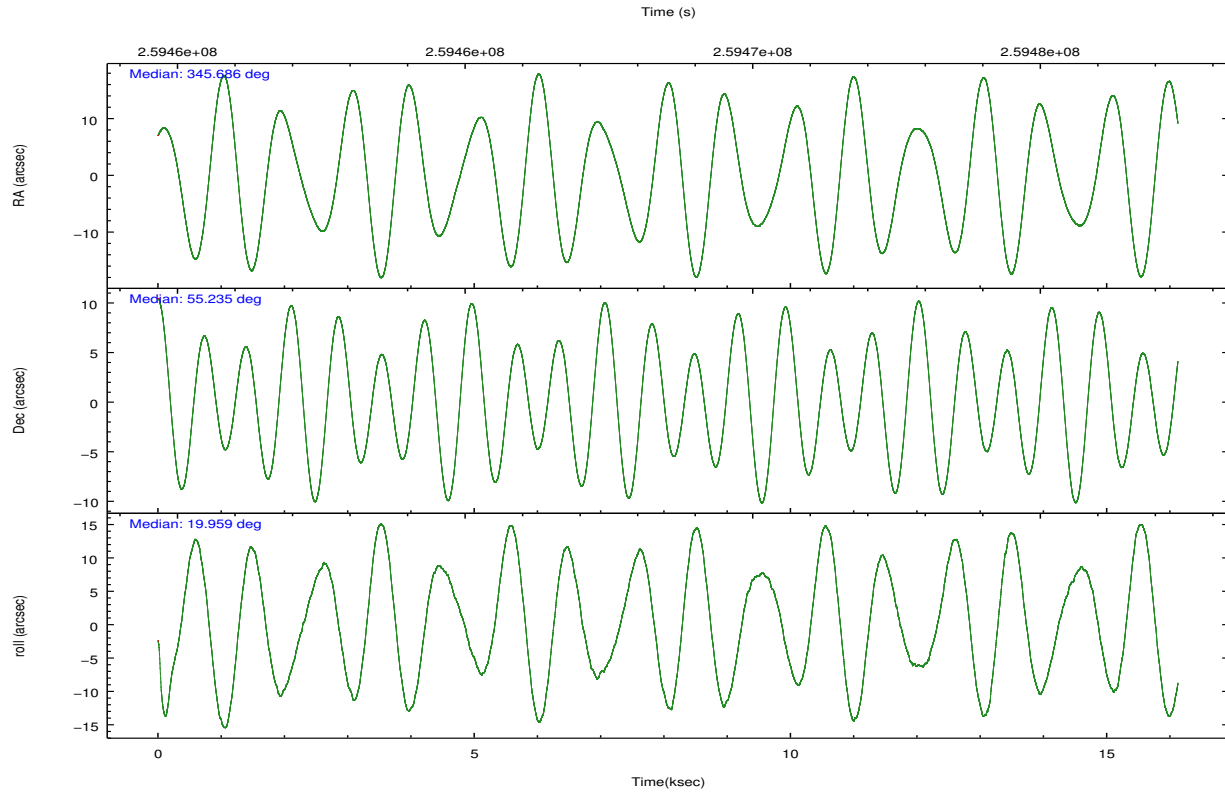
	ccd 2	ccd 3	ccd 5	ccd 6	ccd 7	ccd 8		ccd 2	ccd 3	ccd 5	ccd 6	ccd 7	ccd 8
level 1 events	133948	126957	201429	132329	179801	168067	grade 0 events	7064	6943	10936	6503	6606	11513
rejected events	118269	111535	108008	116435	104808	131485		5%	5%	5%	4%	3%	6%
rejected %	88%	87%	53%	87%	58%	78%	grade 1 events	85	93	768	69	181	113
								0%	0%	0%	0%	0%	0%
							grade 2 events	3154	2903	27248	3298	15084	8327
								2%	2%	13%	2%	8%	4%
							grade 3 events	1418	1480	3644	1568	6555	3581
								1%	1%	1%	1%	3%	2%
							grade 4 events	1480	1466	3528	1440	6526	3406
								1%	1%	1%	1%	3%	2%
							grade 5 events	5038	5803	14526	6088	17115	8082
								3%	4%	7%	4%	9%	4%
							grade 6 events	2563	2641	48109	3089	40254	9763
								1%	2%	23%	2%	22%	5%
							grade 7 events	113146	105628	92670	110274	87480	123282
								84%	83%	46%	83%	48%	73%

2.2 Compared Parameters

Parameter	Planned	Actual	Parameter	Planned	Actual
Instrument	ACIS	ACIS	Obspar format version number	7	7
Detector	ACIS-235678	ACIS-235678	Obspar file type	PREDICTED	ACTUAL
Grating	NONE	NONE	Obspar update status	NONE	UPDATED
Data mode	FAINT	FAINT	Number of optional ACIS chips dropped	0	0
Observation mode	POINTING	POINTING	On-chip summing requested	N	N
[deg] Pointing RA	345.655761	345.6860194233994	Subarray requested	NONE	NONE
[deg] Pointing Dec	55.214161	55.23523732947002	Alternating exposures requested	N	N
[deg] Pointing Roll	19.830988	19.96276351930902	[s] Primary exposure time	0.000000	3.2
[mm] SIM focus pos	-0.684267	-0.6828225247311905			
[mm] SIM defocus	0	0.001444936568705701			
[mm] SIM translation stage pos	-190.132523	-190.1400660498719			
[mm] SIM translation stage offset	0	0.00754346686406393			
[s] Observation start time (MET)	259461592.184000	259460162.20339			
Observation start date	2006-03-23T00:38:47	2006-03-23T00:16:02			
[s] Observation end time (MET)	259476592.184000	259477141.84168			
Observation end date	2006-03-23T04:48:47	2006-03-23T04:59:01			
Read mode	TIMED	TIMED			

2.3 Aspect



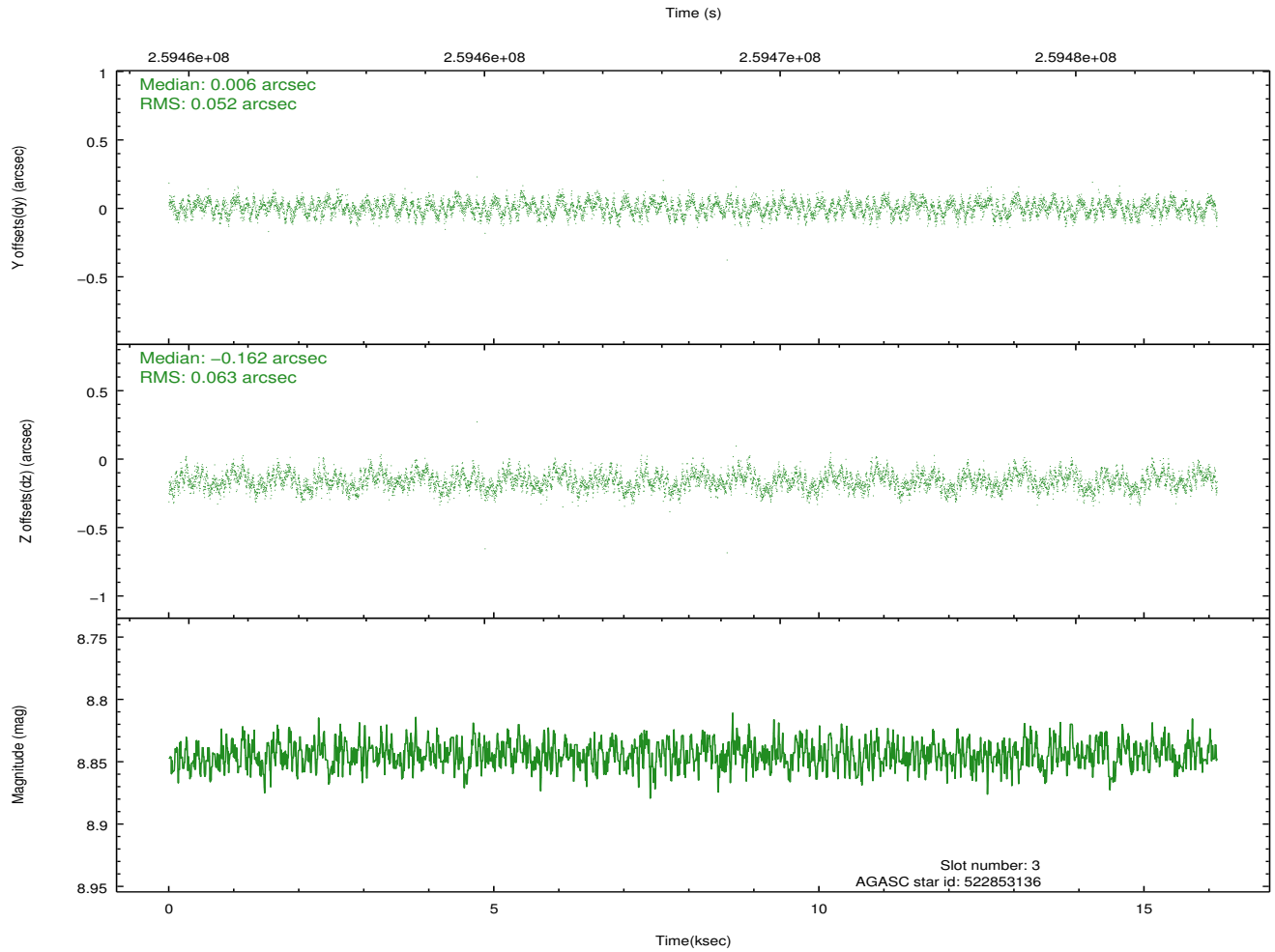
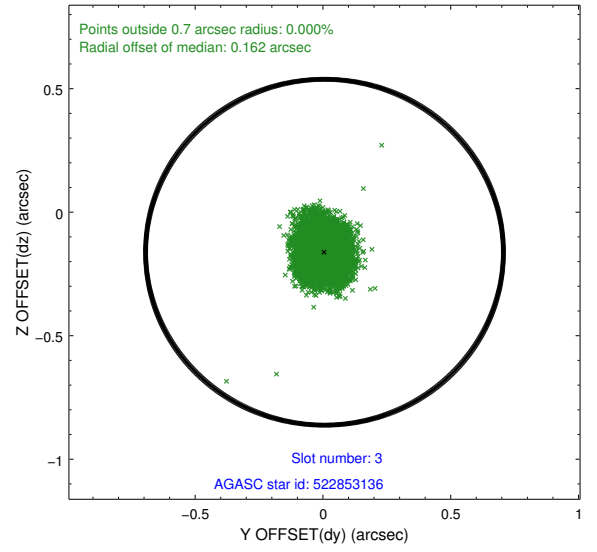
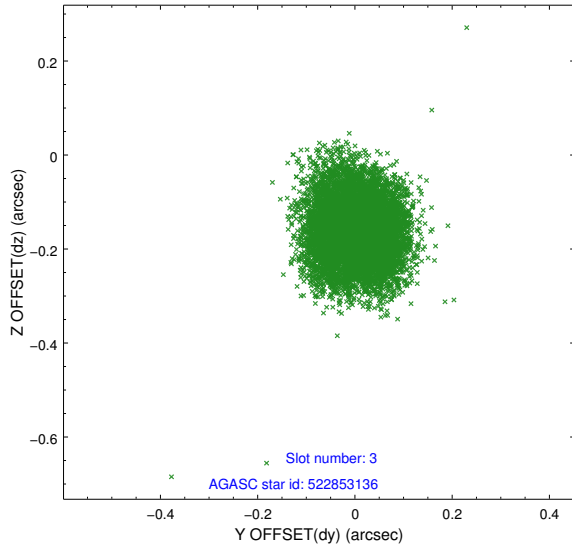


Slot Statistics

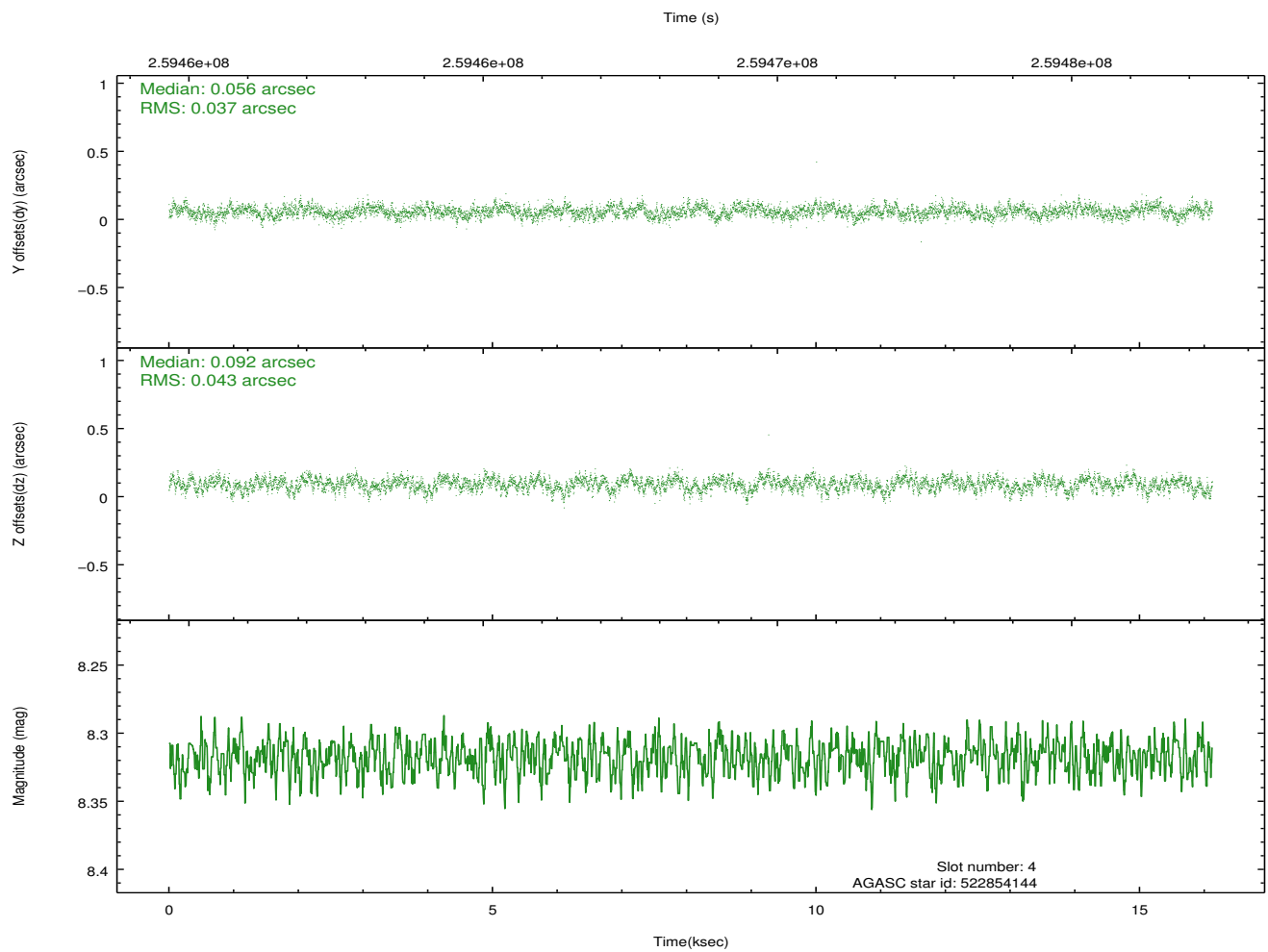
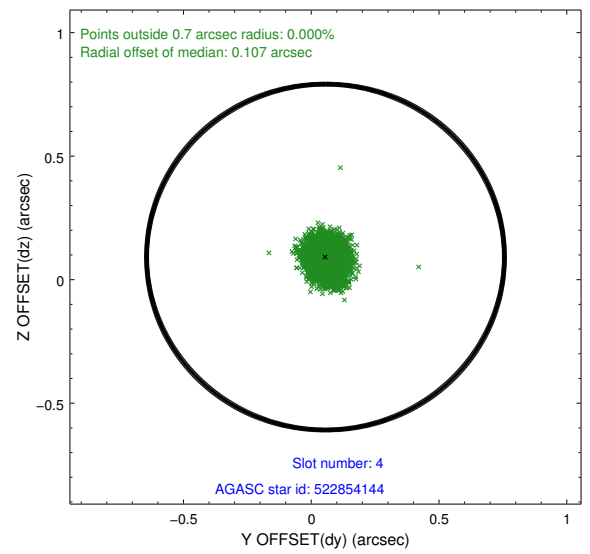
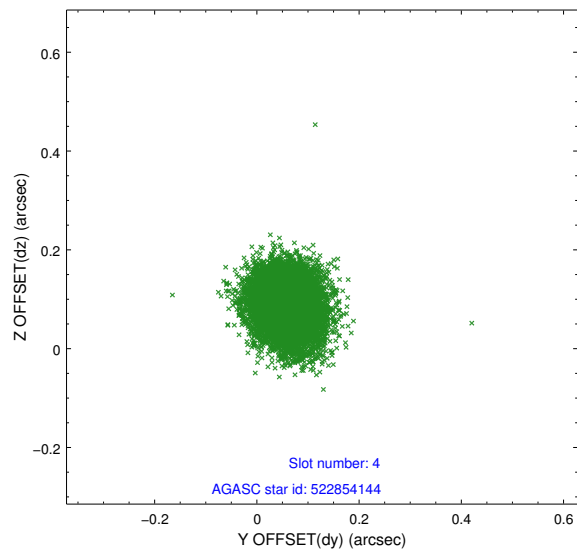
slot	status	id	mag	n_pts	med_dy	med_dz	dr1	dr2	ra	dec	mean_y	mean_z
0	FID	ACIS-S-1	7.19	3933	0.083	-0.052	0.007	0.012	0.000000	0.000000	933.52	-1729.74
1	FID	ACIS-S-2	7.11	3933	-0.004	-0.026	0.008	0.015	0.000000	0.000000	-762.32	-1734.51
2	FID	ACIS-S-5	7.23	3933	-0.102	0.084	0.007	0.012	0.000000	0.000000	-1815.90	167.73
3	GUIDE	522853136	8.84	7862	0.006	-0.162	0.087	0.137	345.050025	55.776492	-465.24	2325.43
4	GUIDE	522854144	8.32	7865	0.056	0.092	0.060	0.097	346.180558	55.691546	1586.10	1259.62
5	GUIDE	522854448	8.87	7858	-0.061	-0.017	0.076	0.121	346.221189	55.791754	1783.65	1572.64
6	GUIDE	522856832	9.25	7859	0.009	0.089	0.084	0.137	344.802684	54.745314	-2236.11	-975.91
7	GUIDE	522859304	8.08	7864	-0.008	0.002	0.055	0.091	345.389908	54.652402	-1206.82	-1713.62

2.4 Star Slots

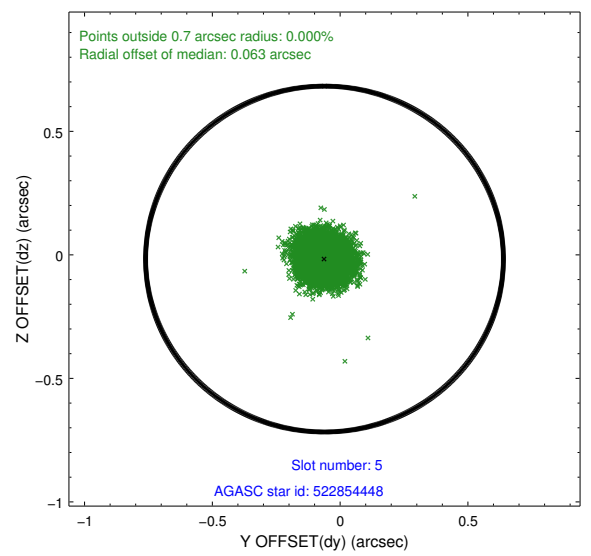
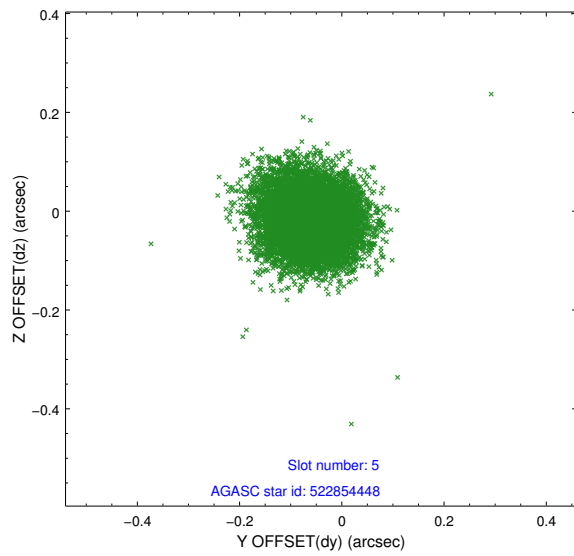
2.4.1 Slot 3



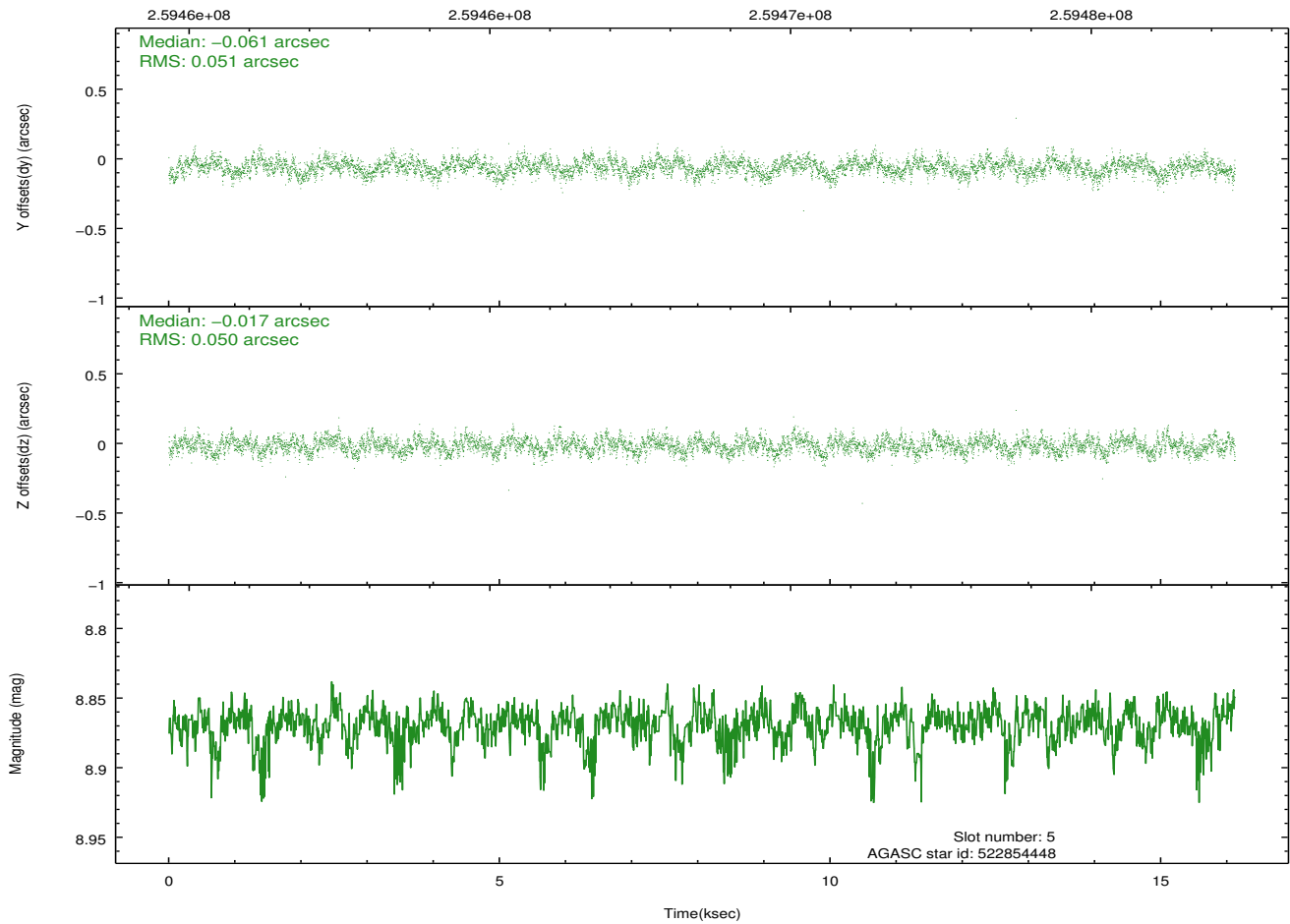
2.4.2 Slot 4



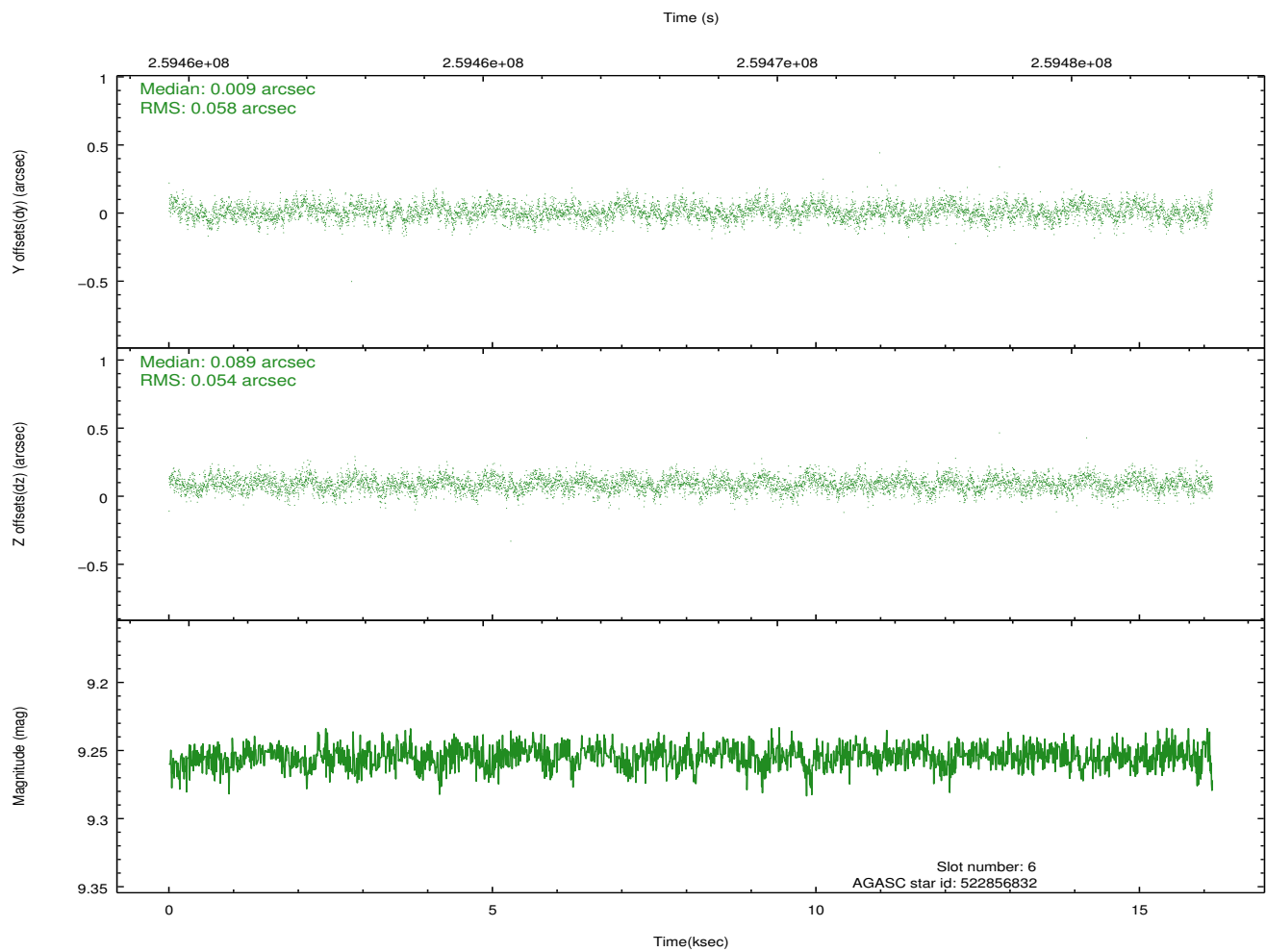
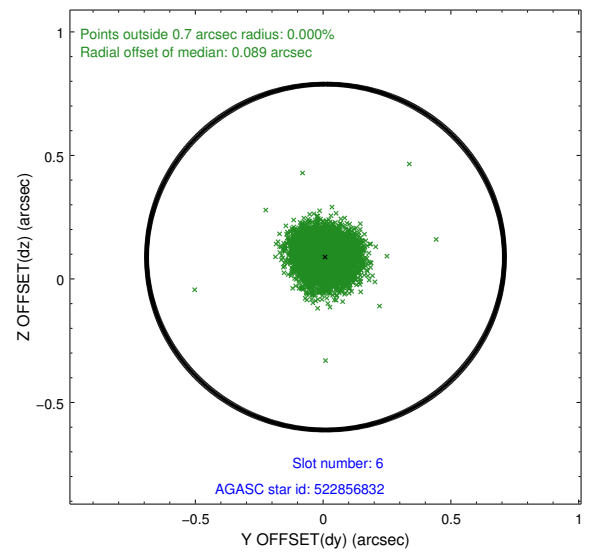
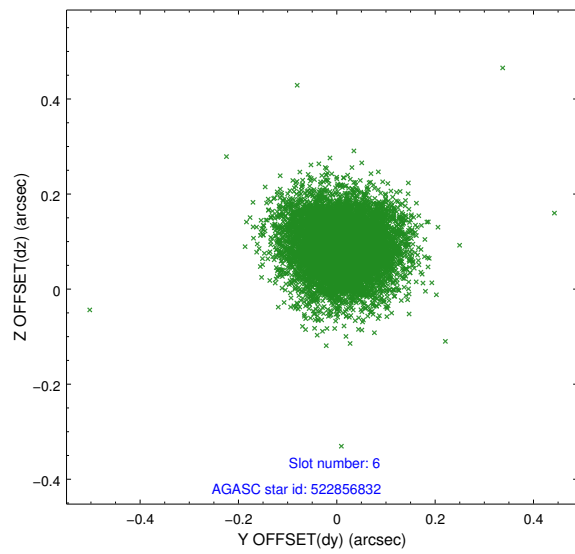
2.4.3 Slot 5



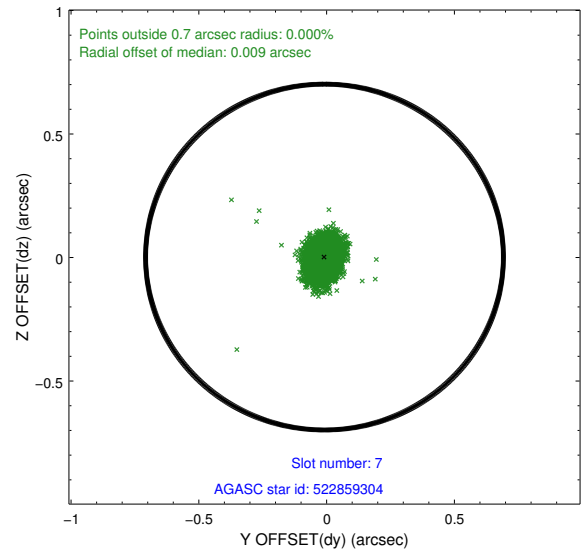
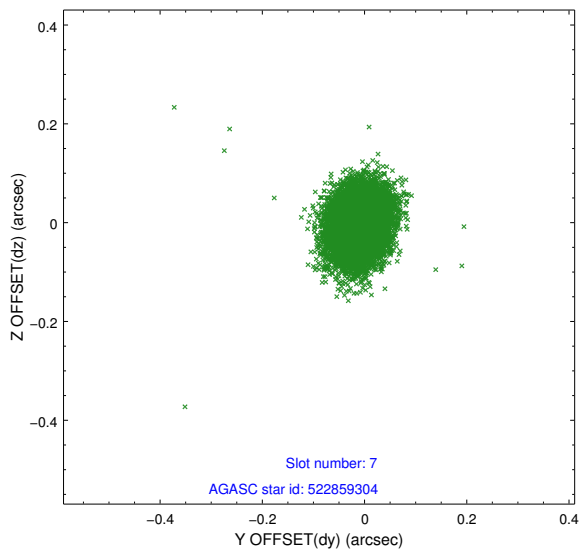
Time (s)



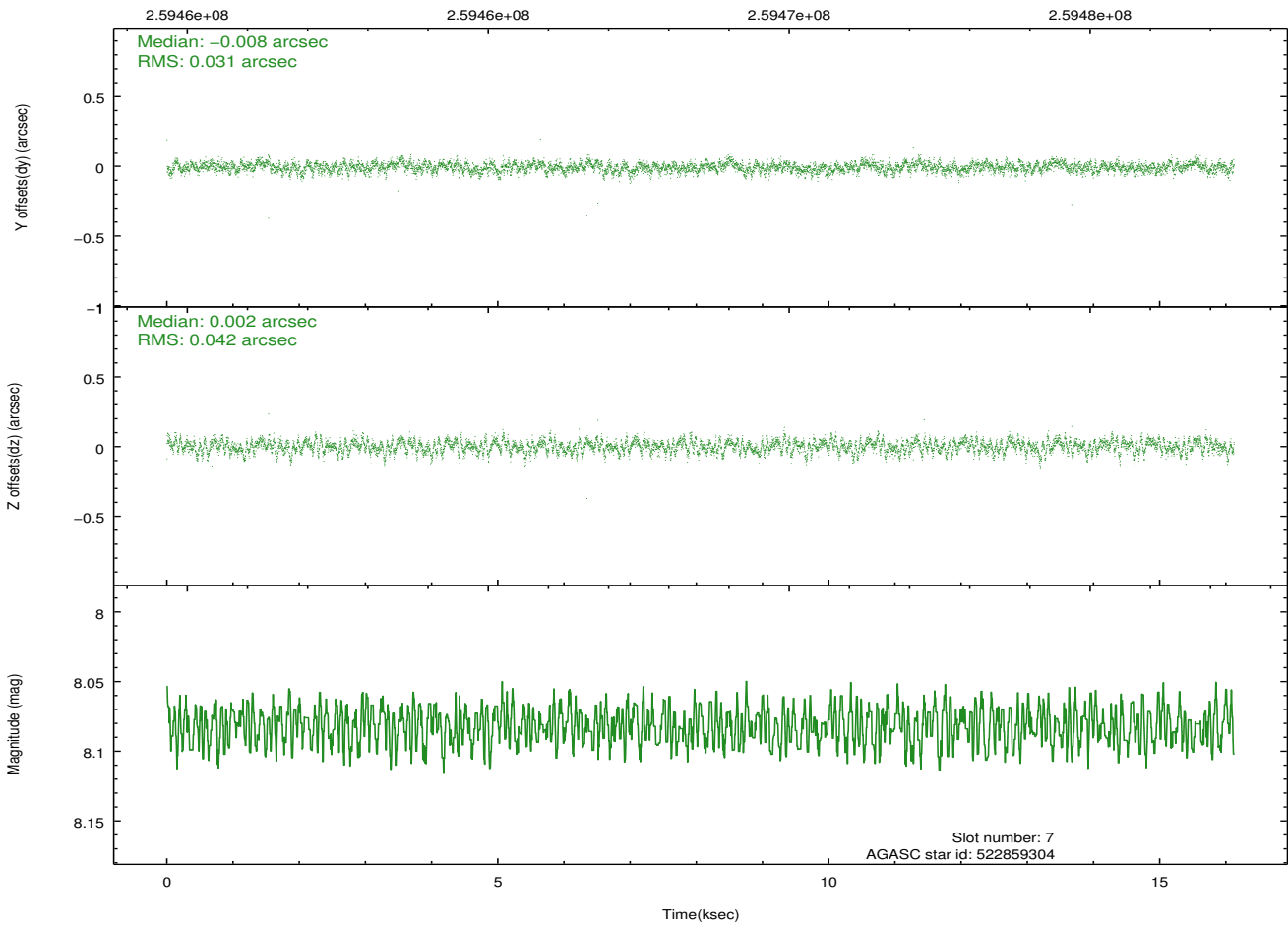
2.4.4 Slot 6



2.4.5 Slot 7

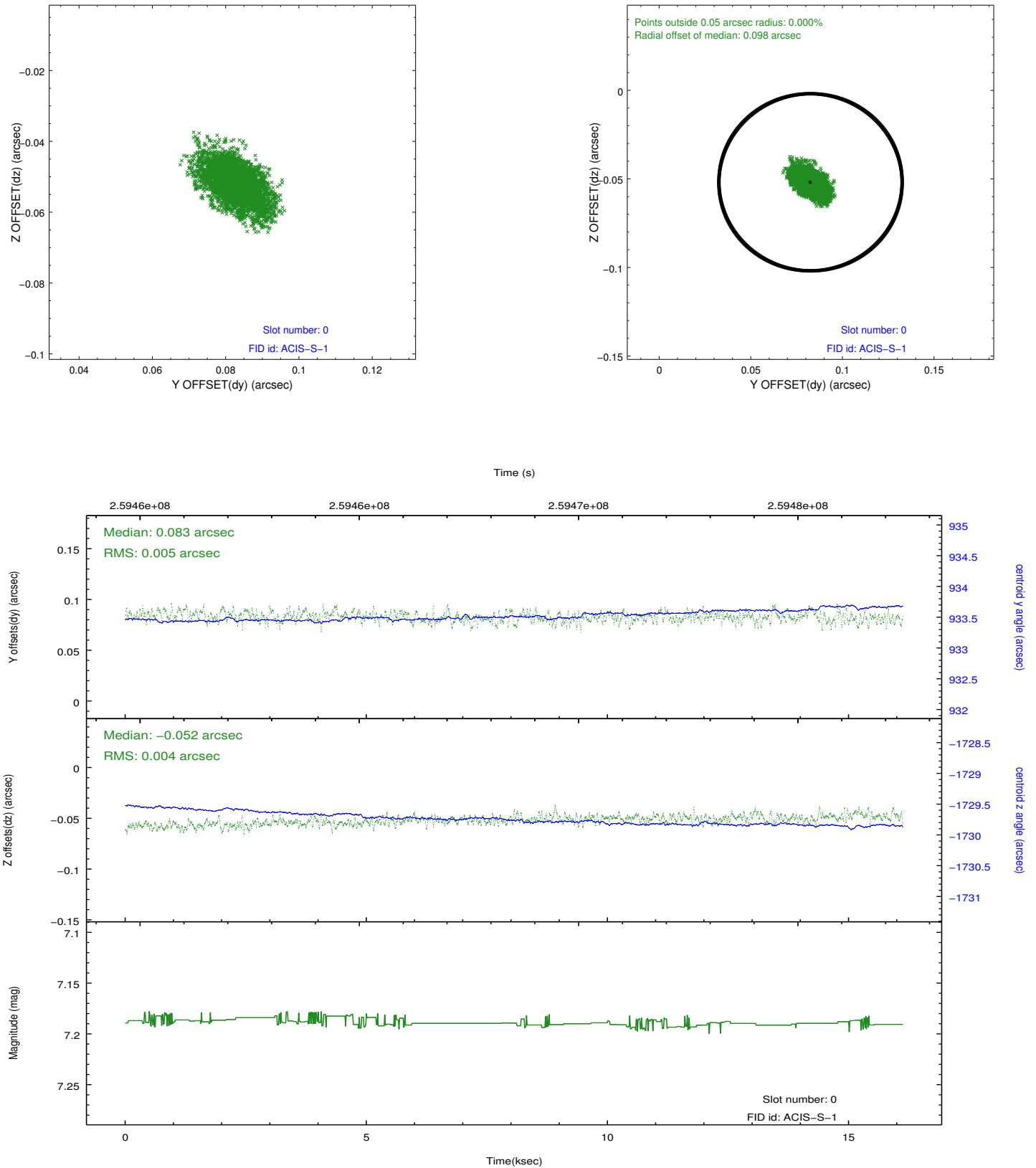


Time (s)

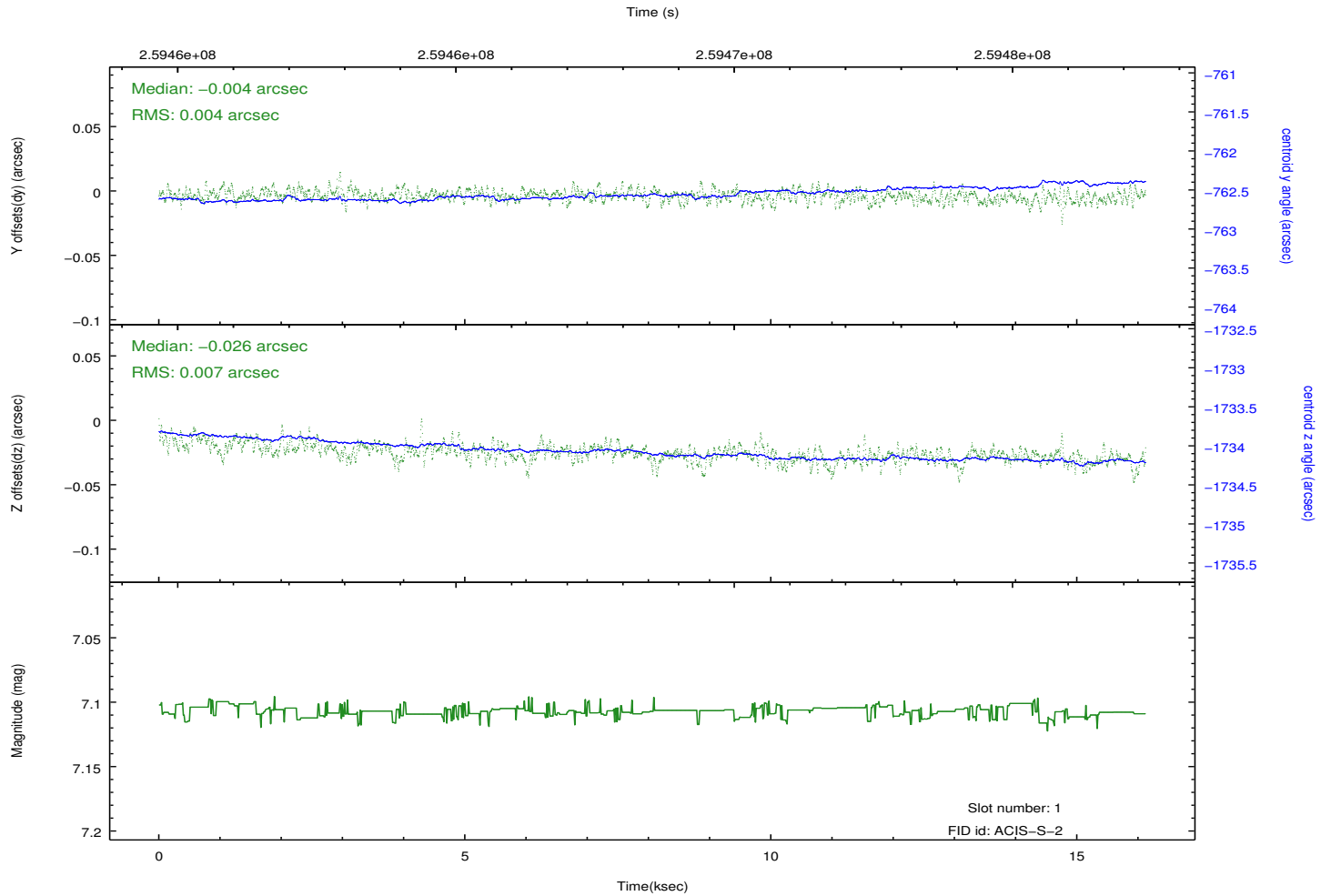
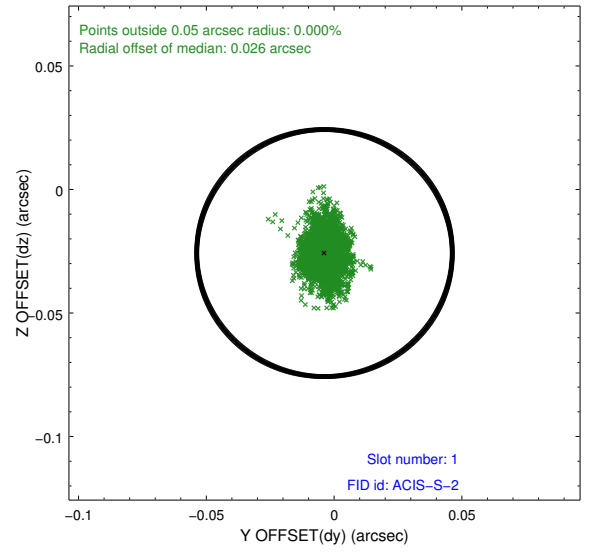
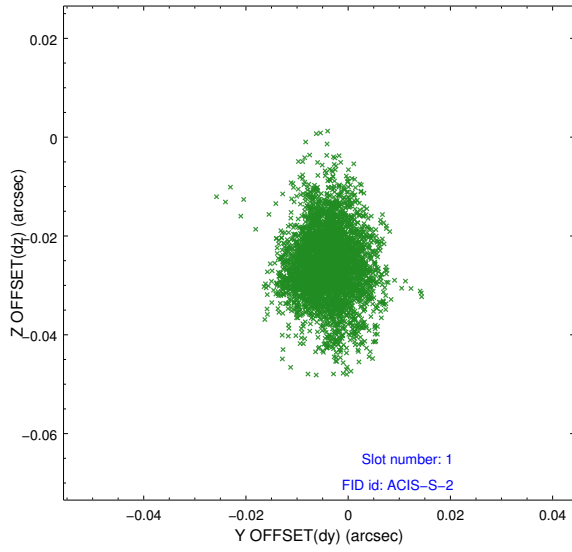


2.5 FID Slots

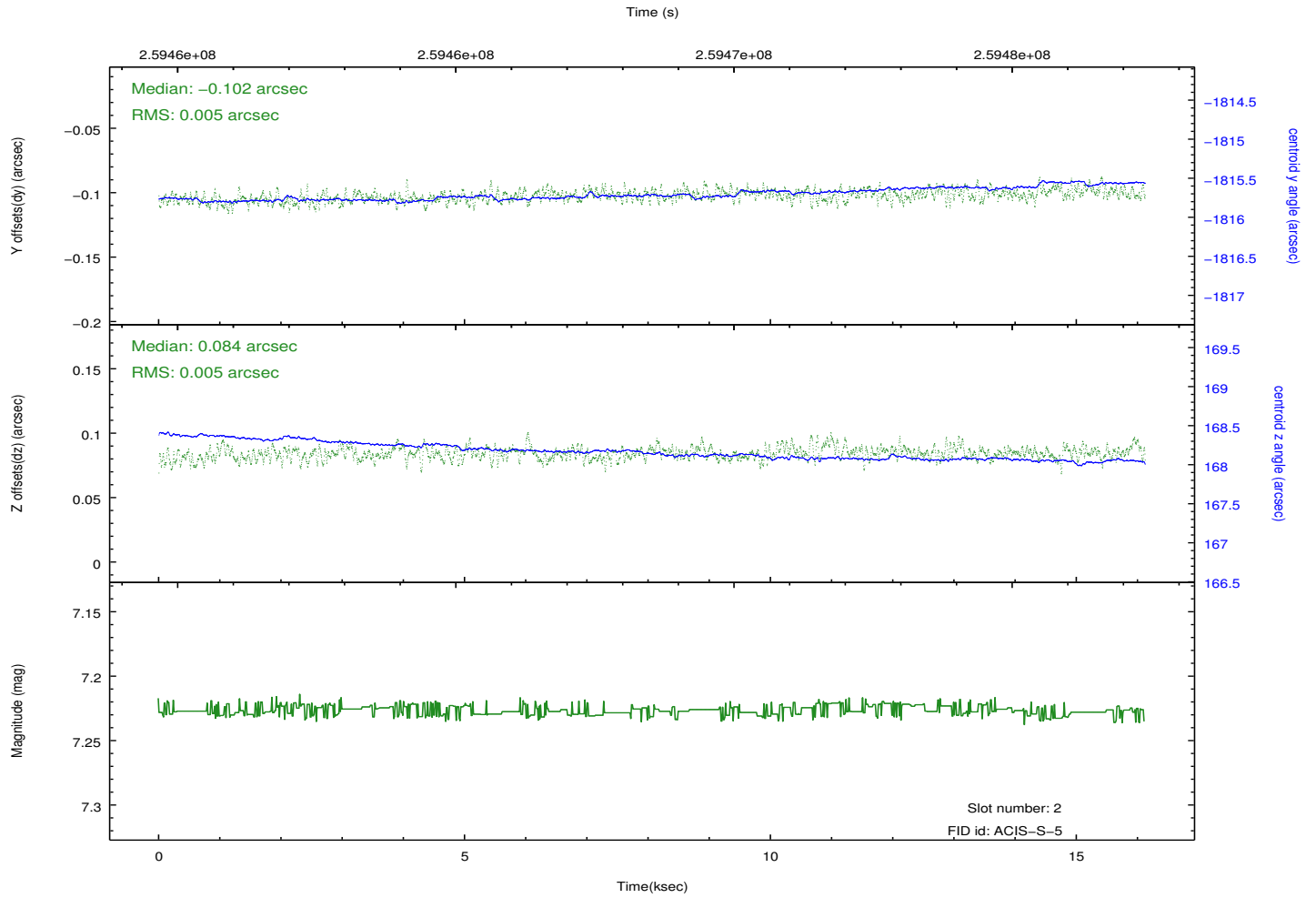
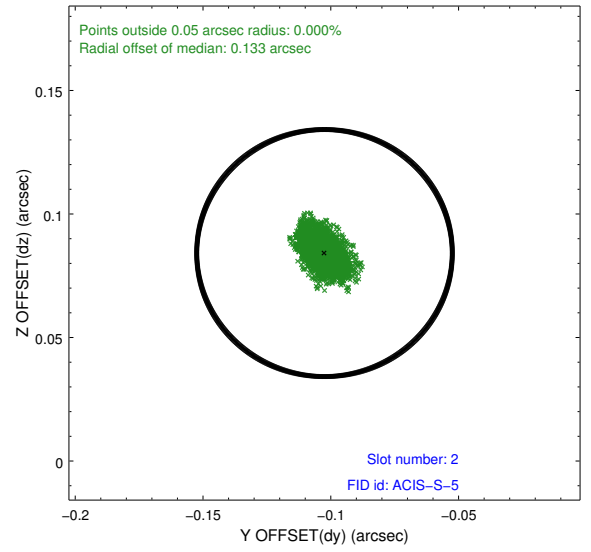
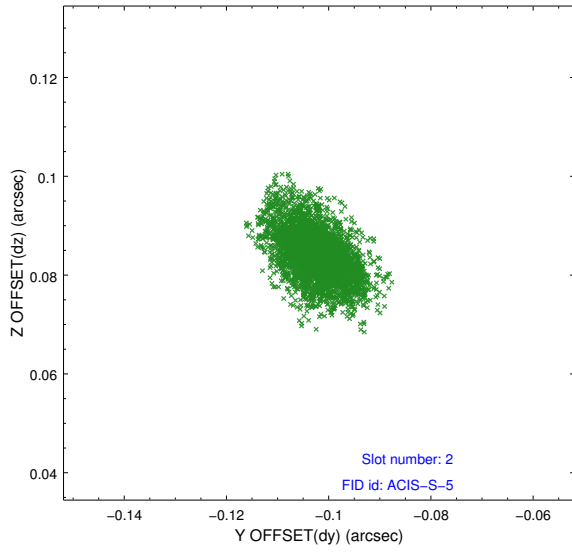
2.5.1 Slot 0



2.5.2 Slot 1



2.5.3 Slot 2



A Summary

A.1 Status

V&V Scientist	Beth Sundheim
V&V Date (YYYY-MM-DD)	2012.03.30
V&V Edition	1
V&V Disposition and Status	OK
V&V Charge Time	14.9535999

A.2 Comments