

V&V Reference Report

L2 ASCDS Version : 8.4.3

Observation 5480 - L2 Version 2
Chandra X-Ray Center

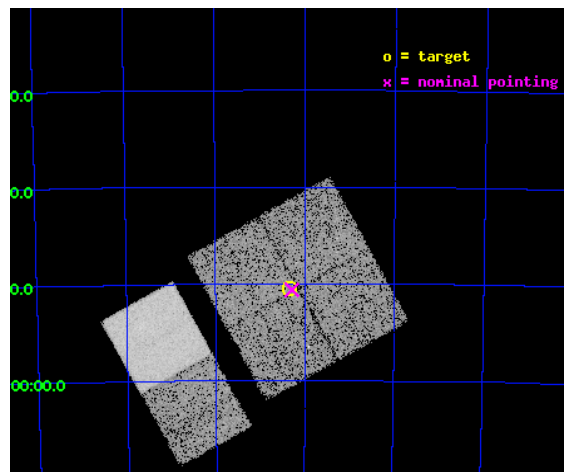
L2 Processing Date : Mar 24 2012

Contents

1	Front	2
2	OBI	3
2.1	OBI	3
2.1.1	Images	3
2.1.2	Bias	3
2.1.3	Parameters	4
2.1.4	Events	4
2.2	Compared Parameters	5
2.3	Aspect	6
2.4	Star Slots	9
2.4.1	Slot 3	9
2.4.2	Slot 4	10
2.4.3	Slot 5	11
2.4.4	Slot 6	12
2.4.5	Slot 7	13
2.5	FID Slots	14
2.5.1	Slot 0	14
2.5.2	Slot 1	15
2.5.3	Slot 2	16
A	Summary	17
A.1	Status	17
A.2	Comments	17

1 Front

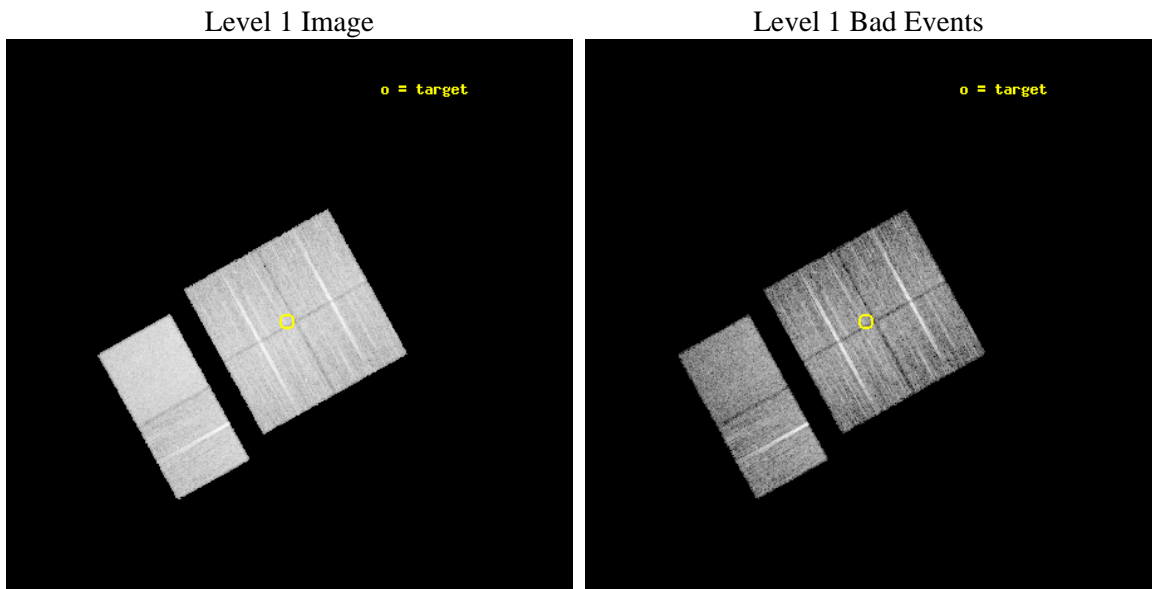
seq_num	400410	Sequence number
obs_id	5480	Observation id
title	Discovering X-ray pulsars in the Wing of the Small Magellanic Cloud	
observer	Prof Malcolm Coe	Principal investigator
object	SMCwing 1	Source name
dtycycle	0	
cycle	P	events from which exps? Prim/Second/Both
ra_targ	14.583333	Observer's specified target RA [deg]
dec_targ	-71.840833	Observer's specified target Dec [deg]
ra_nom	14.571575152121	Nominal RA [deg]
dec_nom	-71.843724834964	Nominal Dec [deg]
roll_nom	240.97989594465	Nominal Roll [deg]
revision	2	Processing version of data
ontime	9715.1999638081	Sum of GTIs [s]
livetime	9592.1802520752	Livetime [s]
ontime0	9715.1999638081	Sum of GTIs [s]
ontime1	9715.1999638081	Sum of GTIs [s]
ontime2	9715.1999638081	Sum of GTIs [s]
ontime3	9715.1999638081	Sum of GTIs [s]
ontime6	9715.1999638081	Sum of GTIs [s]
ontime7	9715.1999638081	Sum of GTIs [s]
l2events	88426	Number of level 2 events



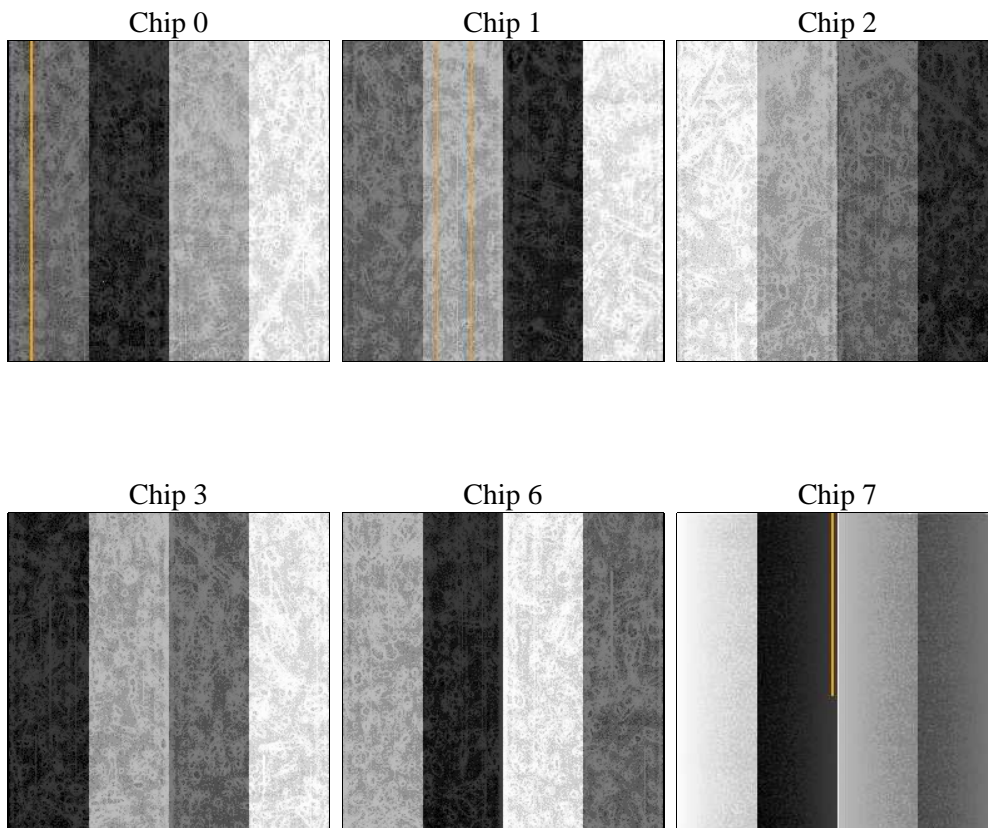
2 OBI

2.1 OBI

2.1.1 Images



2.1.2 Bias



2.1.3 Parameters

obi_num	0	Obi number	sched_exp_time	9700.000000	[s] Scheduled observation exposure time
ascdsver	8.4.3.1	Processing system revision	ontime	9715.1999638081	Sum of GTIs [s]
caldbver	4.4.8	 	ontime0	9715.1999638081	Sum of GTIs [s]
date	2012-03-25T00:13:31	Date and time of file creation	ontime1	9715.1999638081	Sum of GTIs [s]
revision	2	Processing version of data	ontime2	9715.1999638081	Sum of GTIs [s]
			ontime3	9715.1999638081	Sum of GTIs [s]
			ontime6	9715.1999638081	Sum of GTIs [s]
			ontime7	9715.1999638081	Sum of GTIs [s]
			l1events	508011	Number of level 1 events

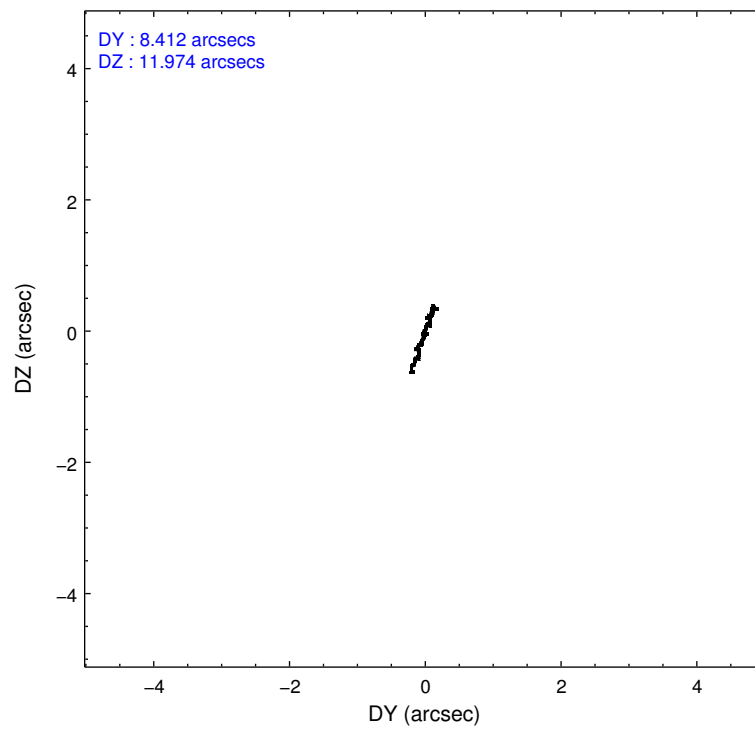
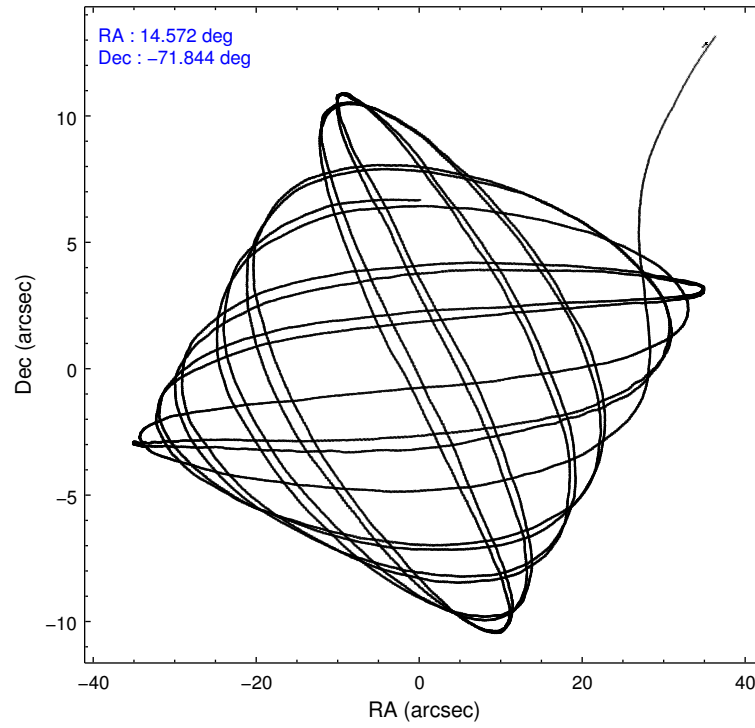
2.1.4 Events

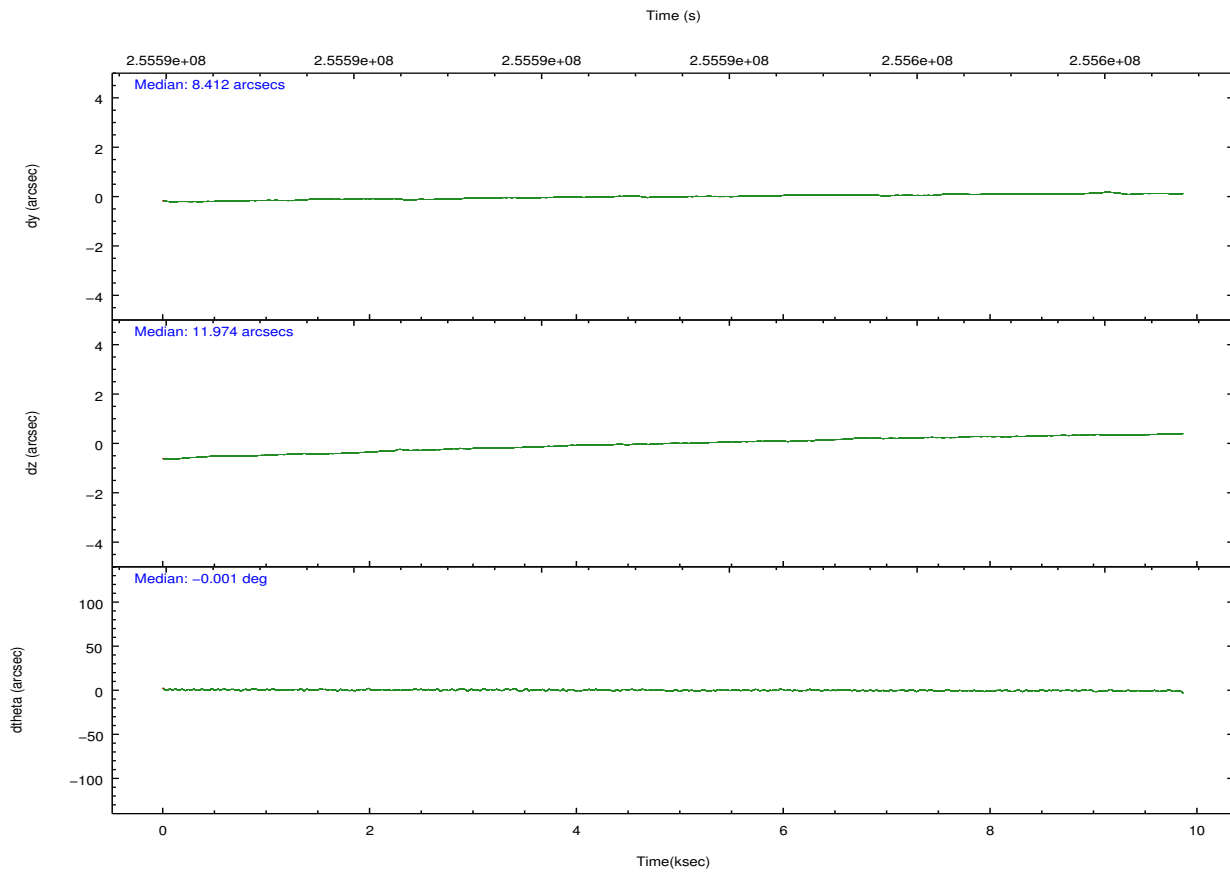
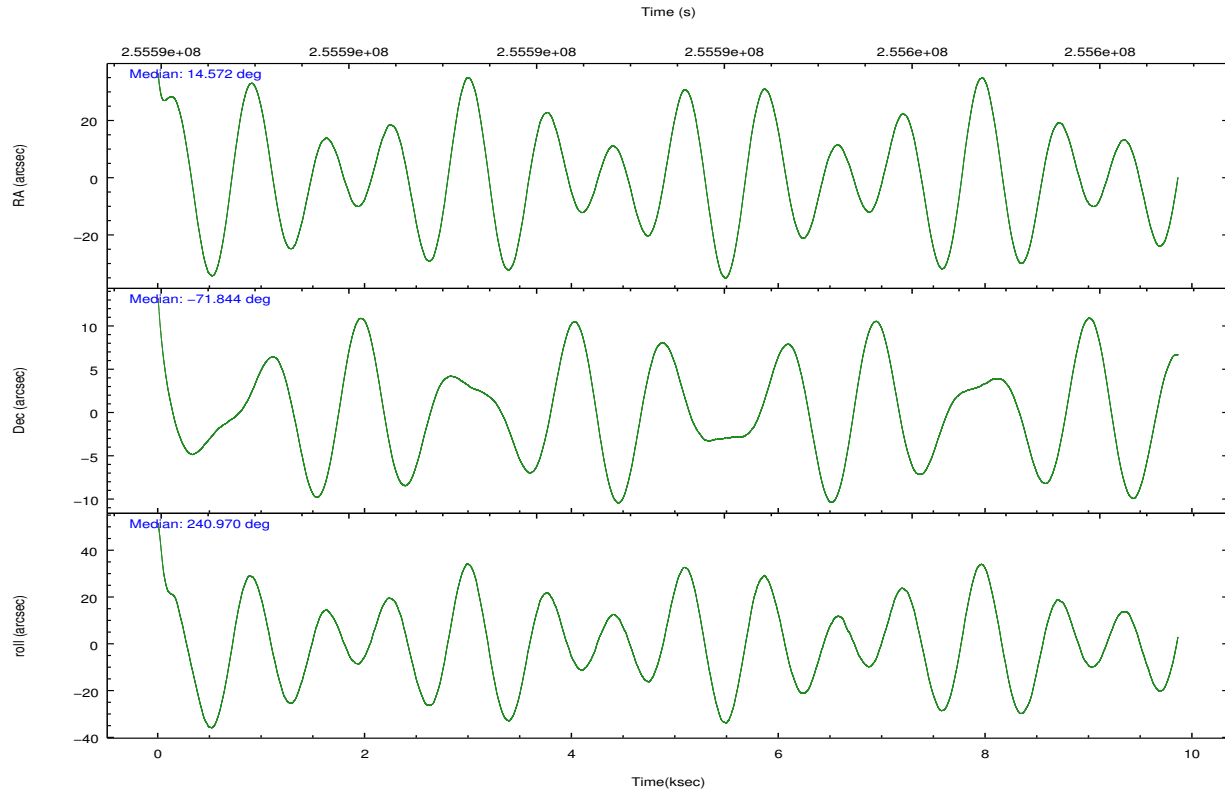
	ccd 0	ccd 1	ccd 2	ccd 3	ccd 6	ccd 7		ccd 0	ccd 1	ccd 2	ccd 3	ccd 6	ccd 7
level 1 events	74573	74866	84414	80028	82772	111358	grade 0 events	4253	3902	4406	4227	4193	4271
rejected events	64724	64731	74382	70376	72577	64686		5%	5%	5%	5%	5%	3%
rejected %	86%	86%	88%	87%	87%	58%	grade 1 events	44	28	45	55	43	119
								0%	0%	0%	0%	0%	0%
							grade 2 events	2086	2257	2149	1883	2162	9446
								2%	3%	2%	2%	2%	8%
							grade 3 events	1003	968	941	891	966	4024
								1%	1%	1%	1%	1%	3%
							grade 4 events	864	991	940	945	922	4053
								1%	1%	1%	1%	1%	3%
							grade 5 events	3176	3507	3025	3649	3708	10633
								4%	4%	3%	4%	4%	9%
							grade 6 events	1646	2018	1600	1708	1953	24895
								2%	2%	1%	2%	2%	22%
							grade 7 events	61501	61195	71308	66670	68825	53917
								82%	81%	84%	83%	83%	48%

2.2 Compared Parameters

Parameter	Planned	Actual	Parameter	Planned	Actual
Instrument	ACIS	ACIS	Obspar format version number	7	7
Detector	ACIS-012367	ACIS-012367	Obspar file type	PREDICTED	ACTUAL
Grating	NONE	NONE	Obspar update status	NONE	UPDATED
Data mode	FAINT	FAINT	Number of optional ACIS chips dropped	0	0
Observation mode	POINTING	POINTING	On-chip summing requested	N	N
[deg] Pointing RA	14.569760	14.57157515212111	Subarray requested	NONE	NONE
[deg] Pointing Dec	-71.816314	-71.84372483496369	Alternating exposures requested	N	N
[deg] Pointing Roll	240.769464	240.9798959446487	[s] Primary exposure time	0.000000	3.2
[mm] SIM focus pos	-0.782348	-0.7809083437167272			
[mm] SIM defocus	0	0.001439871863259334			
[mm] SIM translation stage pos	-233.592463	-233.5874344608287			
[mm] SIM translation stage offset	0	-0.005018542100998502			
[s] Observation start time (MET)	255588628.184000	255587638.2234			
Observation start date	2006-02-06T04:49:23	2006-02-06T04:33:58			
[s] Observation end time (MET)	255598328.184000	255598462.7364			
Observation end date	2006-02-06T07:31:03	2006-02-06T07:34:22			
Read mode	TIMED	TIMED			

2.3 Aspect



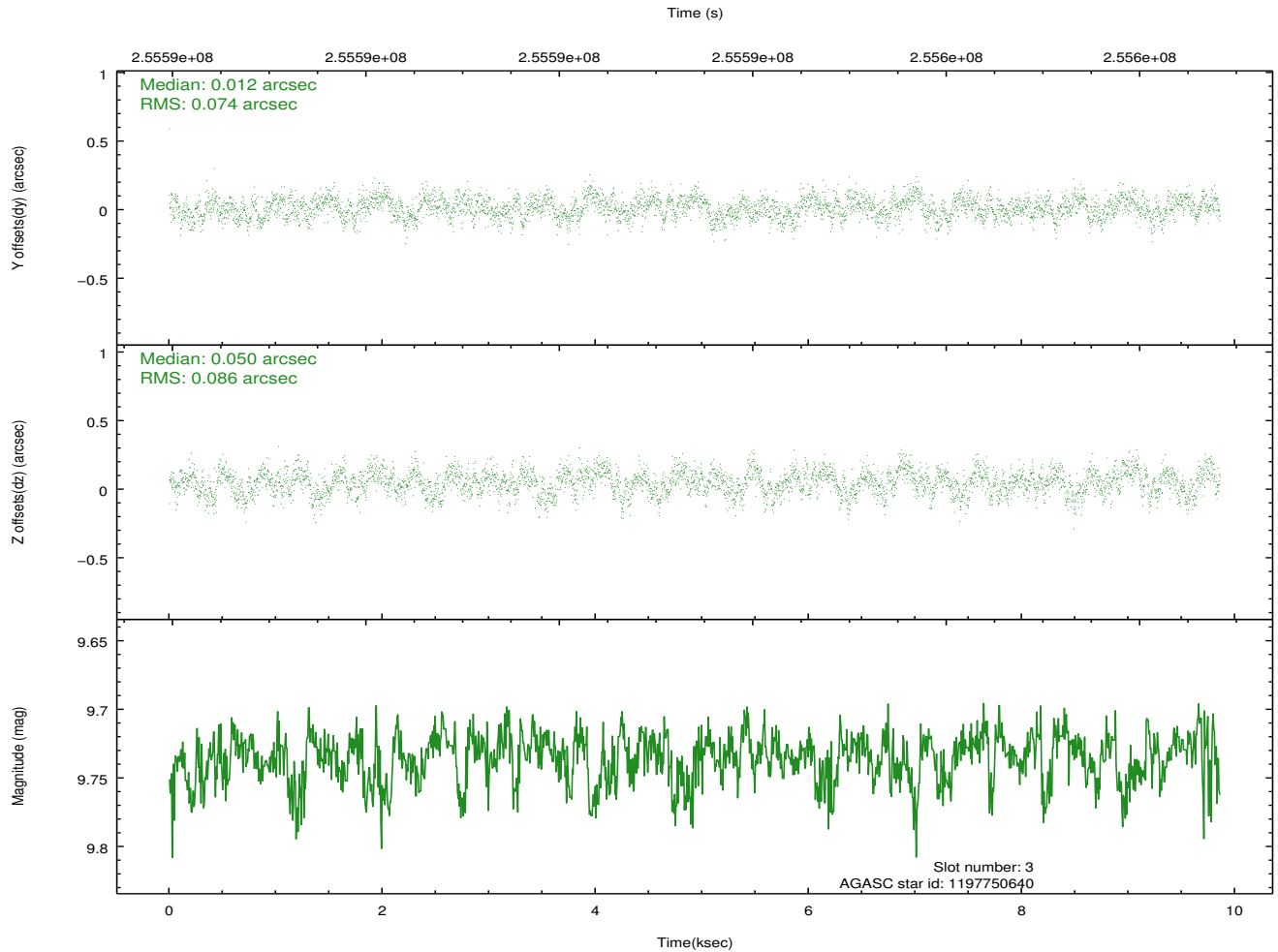
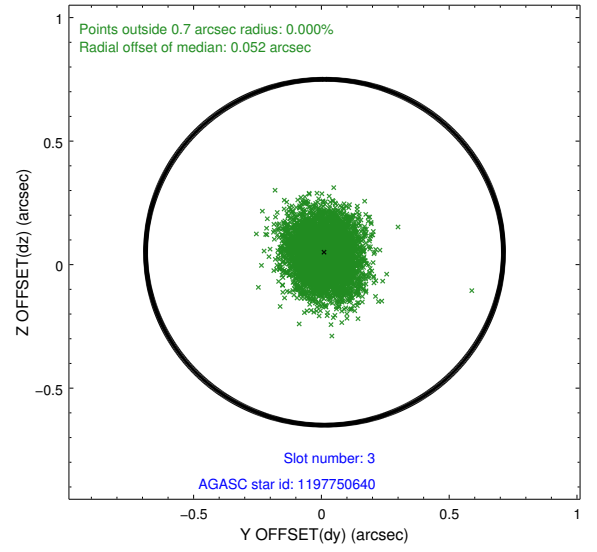
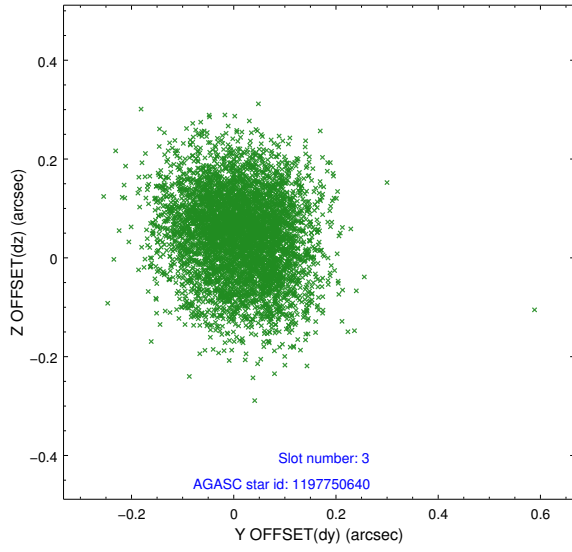


Slot Statistics

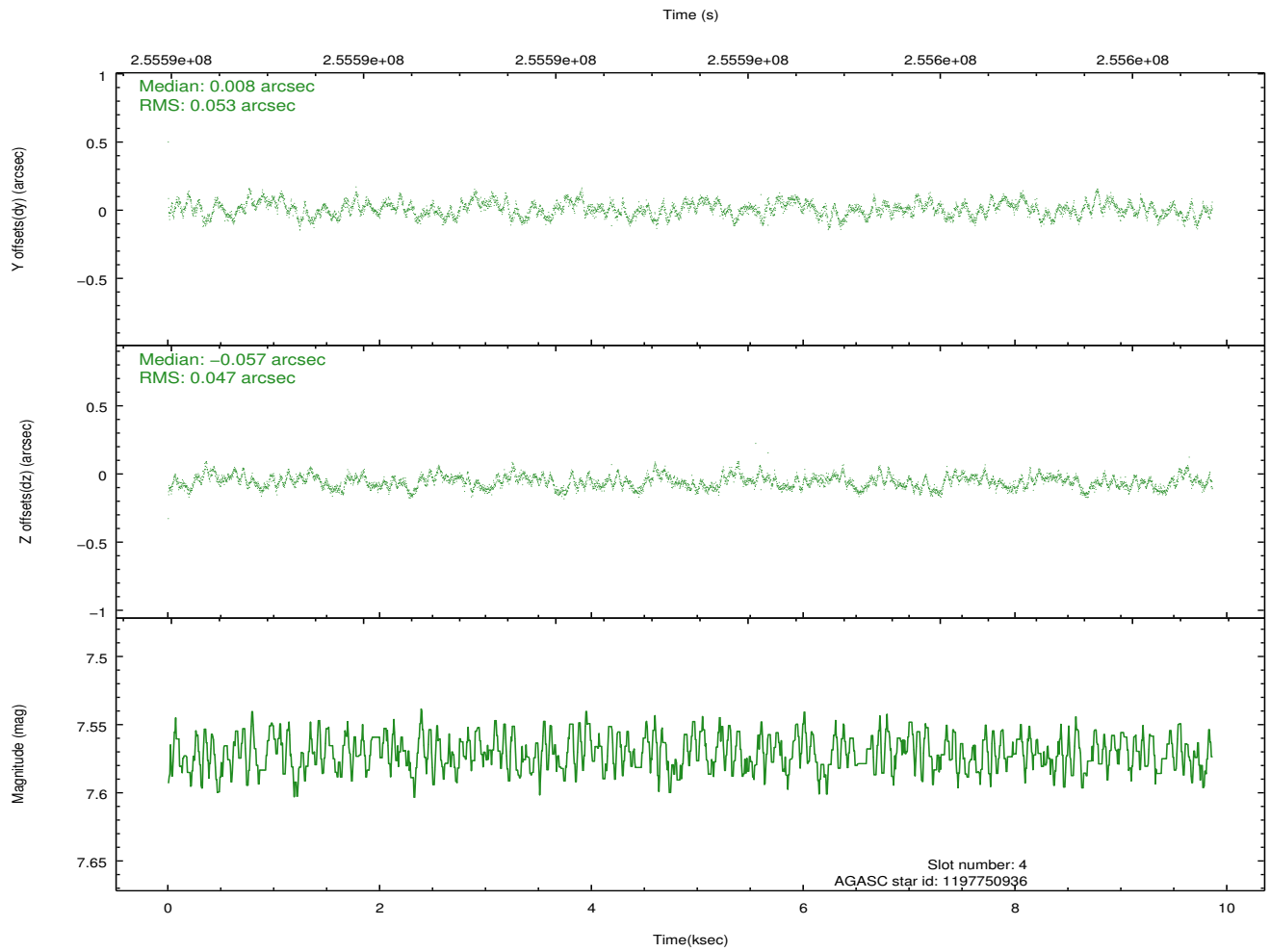
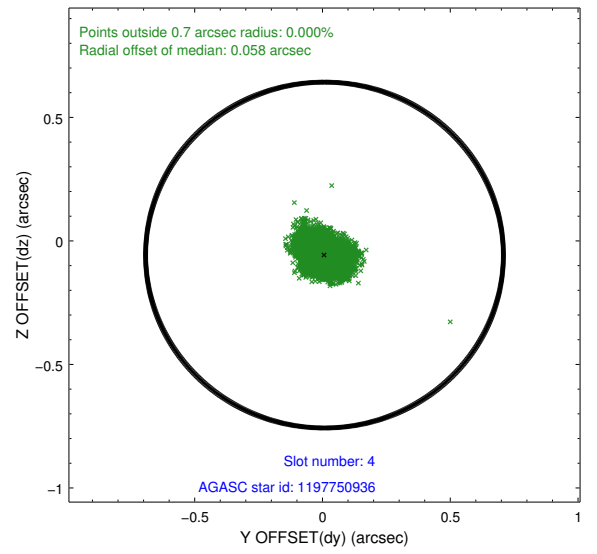
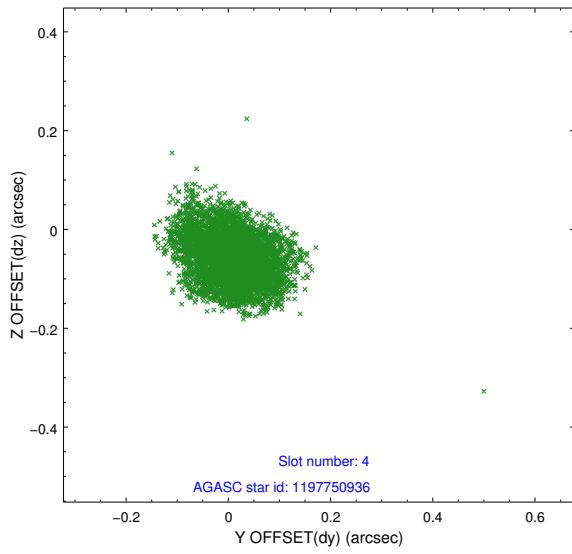
slot	status	id	mag	n_pts	med_dy	med_dz	dr1	dr2	ra	dec	mean_y	mean_z
0	FID	ACIS-I-1	7.24	2406	-0.013	-0.060	0.009	0.015	0.000000	0.000000	931.21	-835.53
1	FID	ACIS-I-4	7.18	2405	0.153	0.071	0.008	0.013	0.000000	0.000000	2151.75	1064.12
2	FID	ACIS-I-5	7.22	2405	-0.238	0.059	0.007	0.012	0.000000	0.000000	-1816.29	1062.63
3	GUIDE	1197750640	9.73	4807	0.012	0.050	0.121	0.194	15.758835	-72.088048	222.02	1632.84
4	GUIDE	1197750936	7.57	4810	0.008	-0.057	0.077	0.119	15.387940	-71.549550	-1287.40	347.85
5	GUIDE	1197751048	8.59	4810	-0.068	0.107	0.084	0.141	12.451586	-72.130600	2165.72	-1468.41
6	GUIDE	1197885328	7.24	4811	0.080	0.009	0.060	0.102	16.283090	-71.733943	-1178.88	1555.39
7	GUIDE	1197749664	9.57	4802	-0.030	-0.109	0.122	0.199	15.809015	-72.366369	1079.74	2153.56

2.4 Star Slots

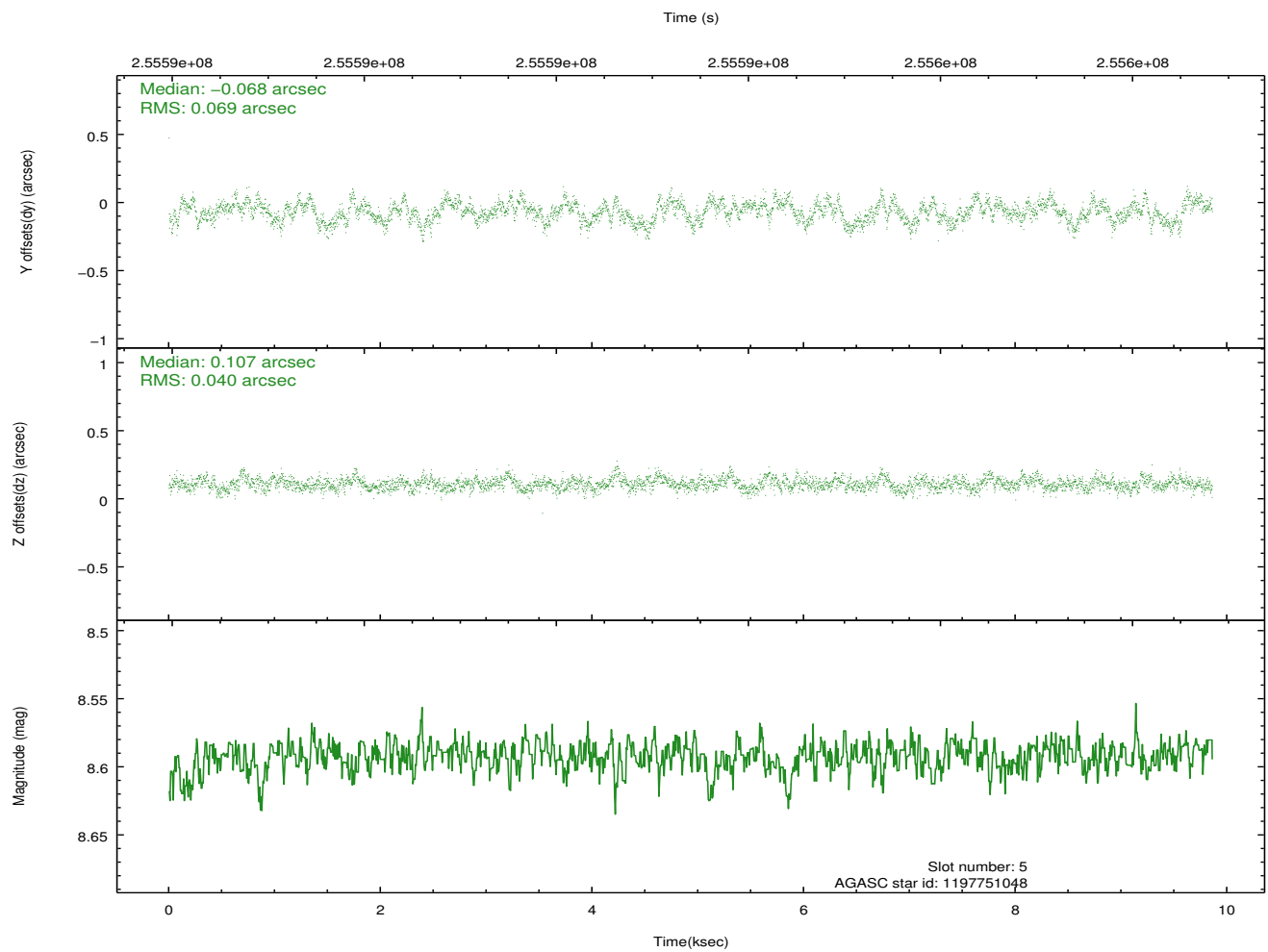
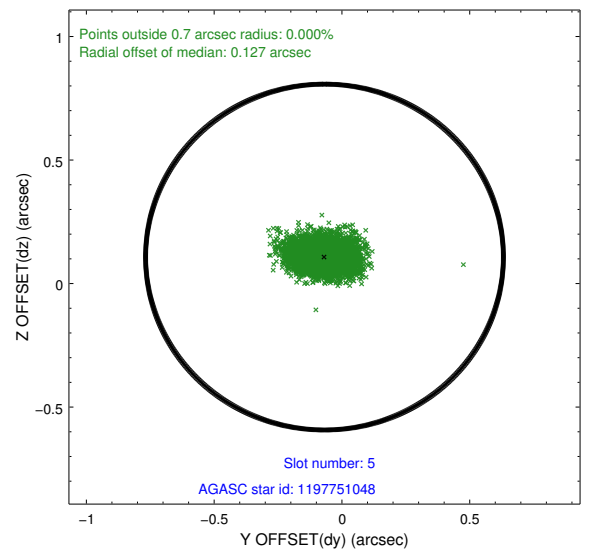
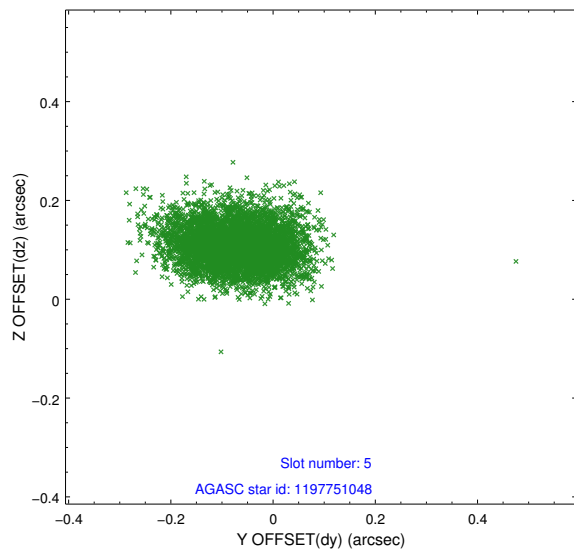
2.4.1 Slot 3



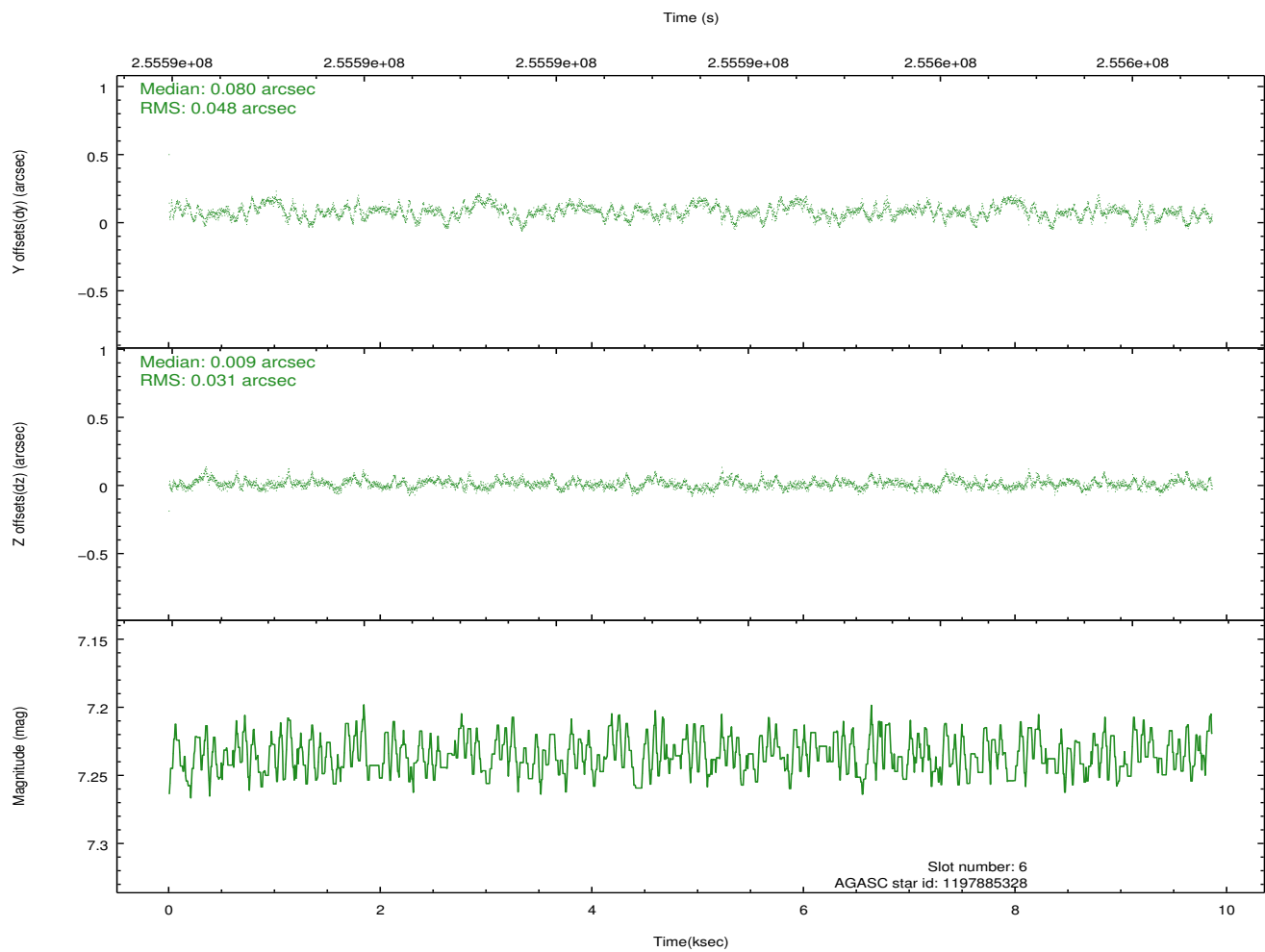
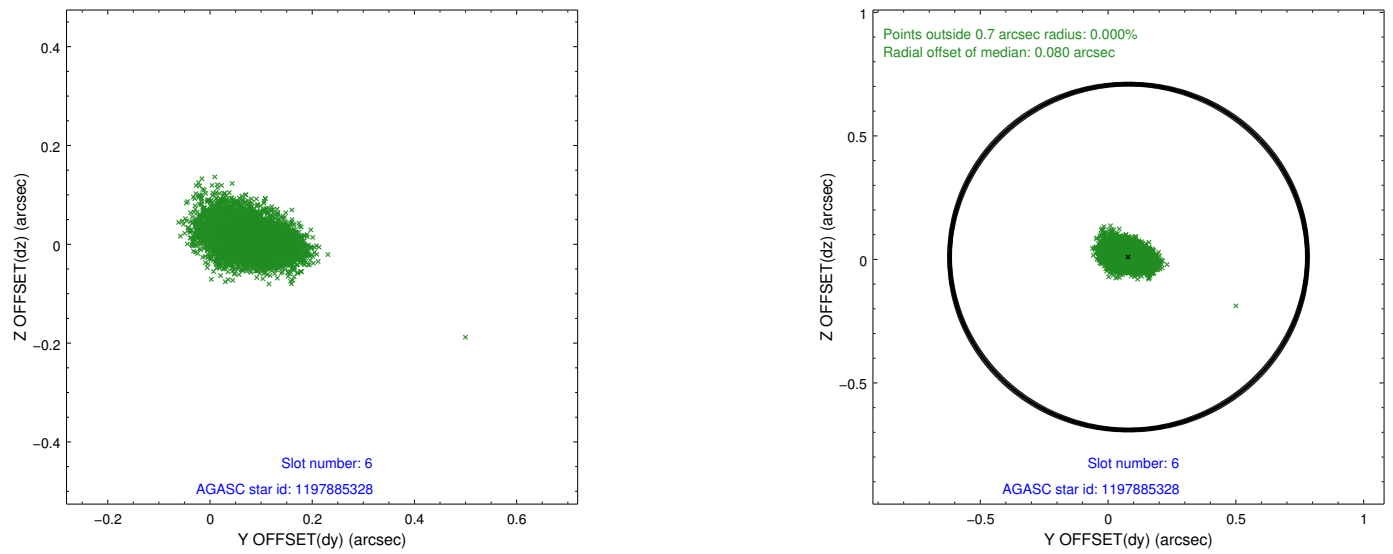
2.4.2 Slot 4



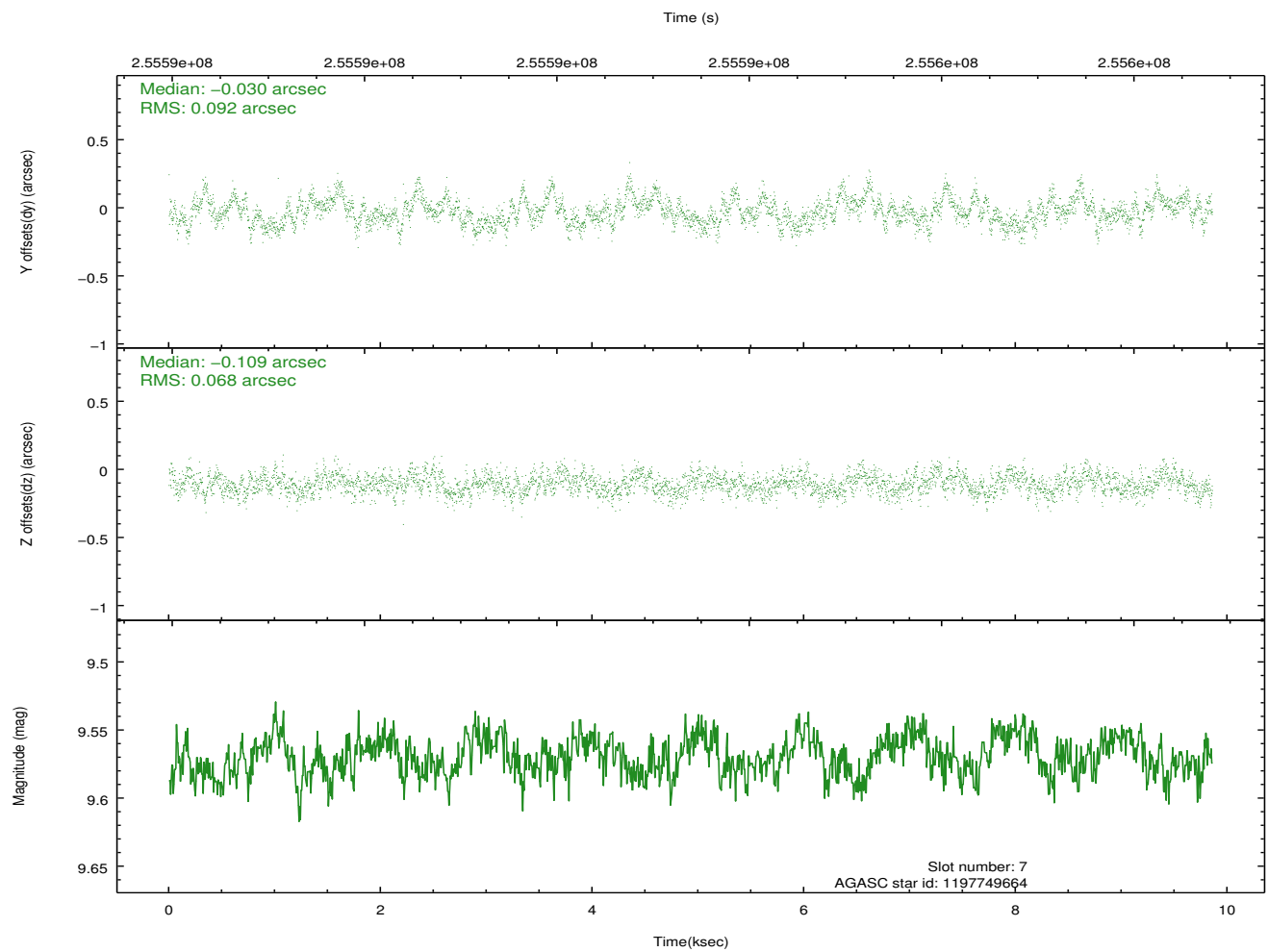
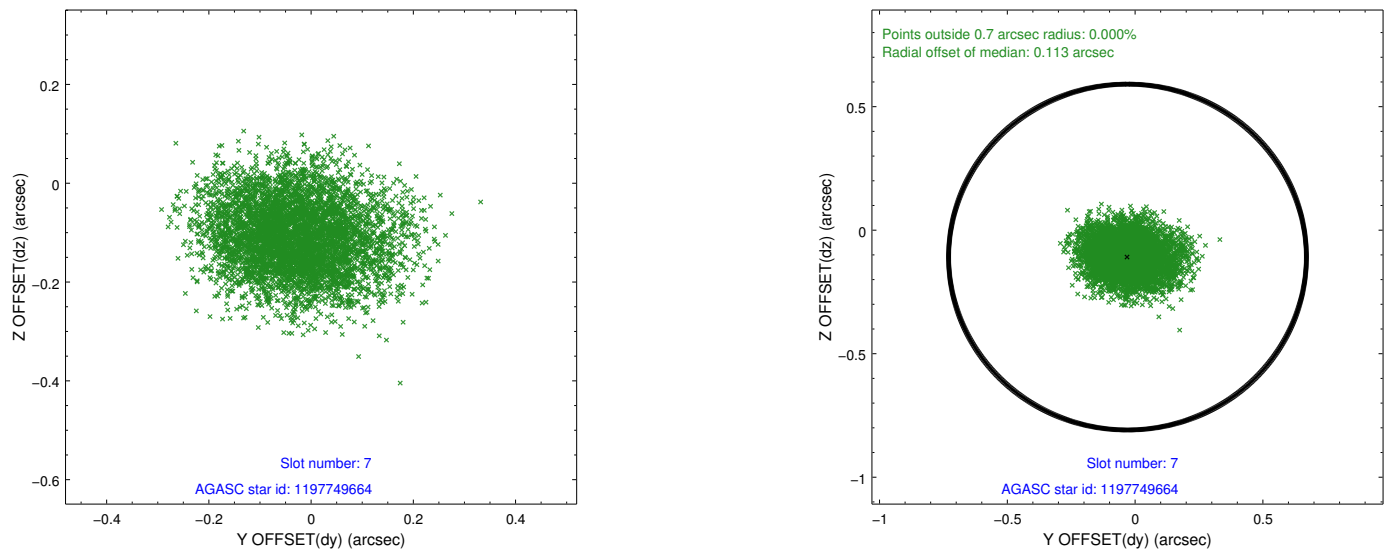
2.4.3 Slot 5



2.4.4 Slot 6

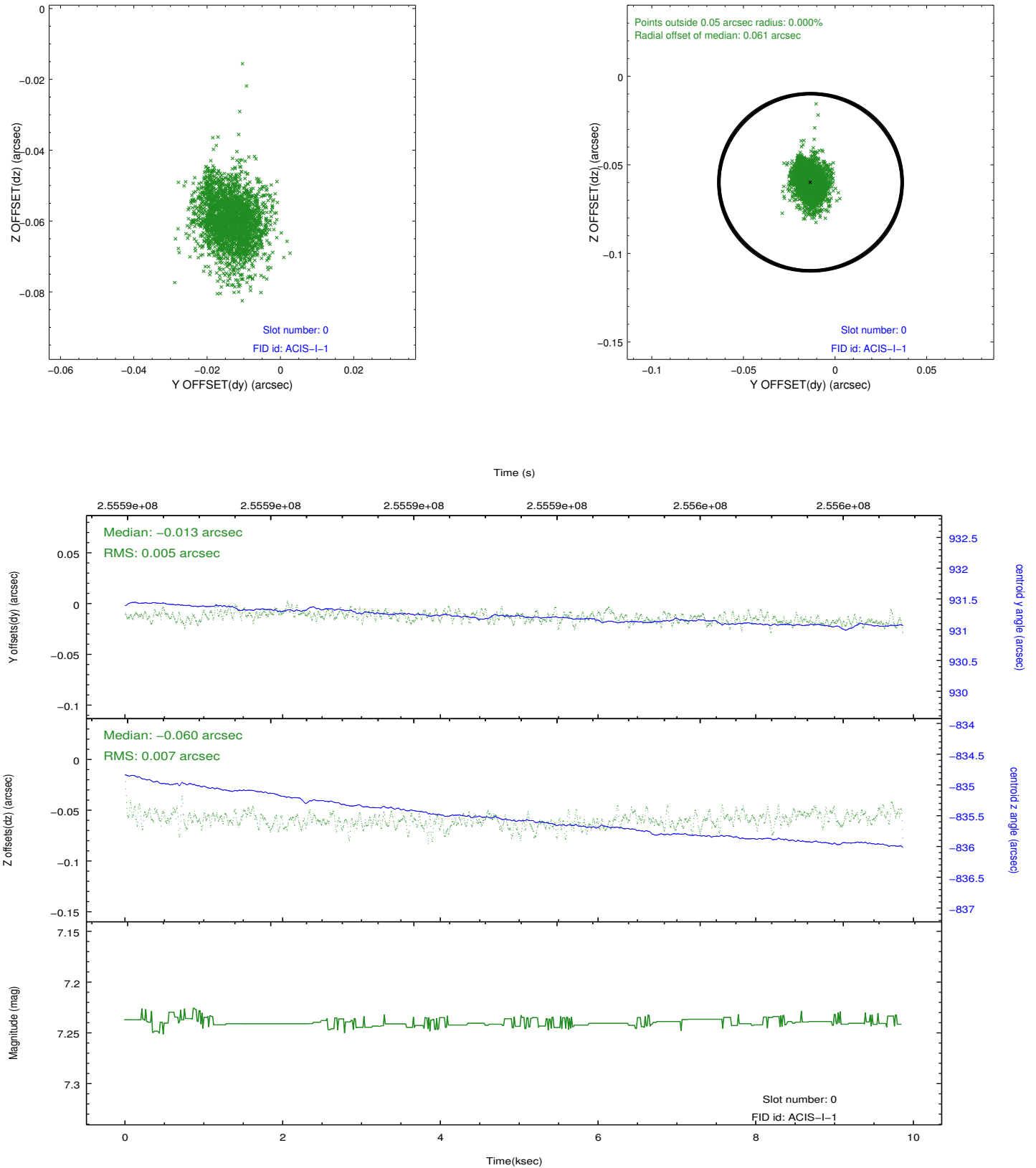


2.4.5 Slot 7

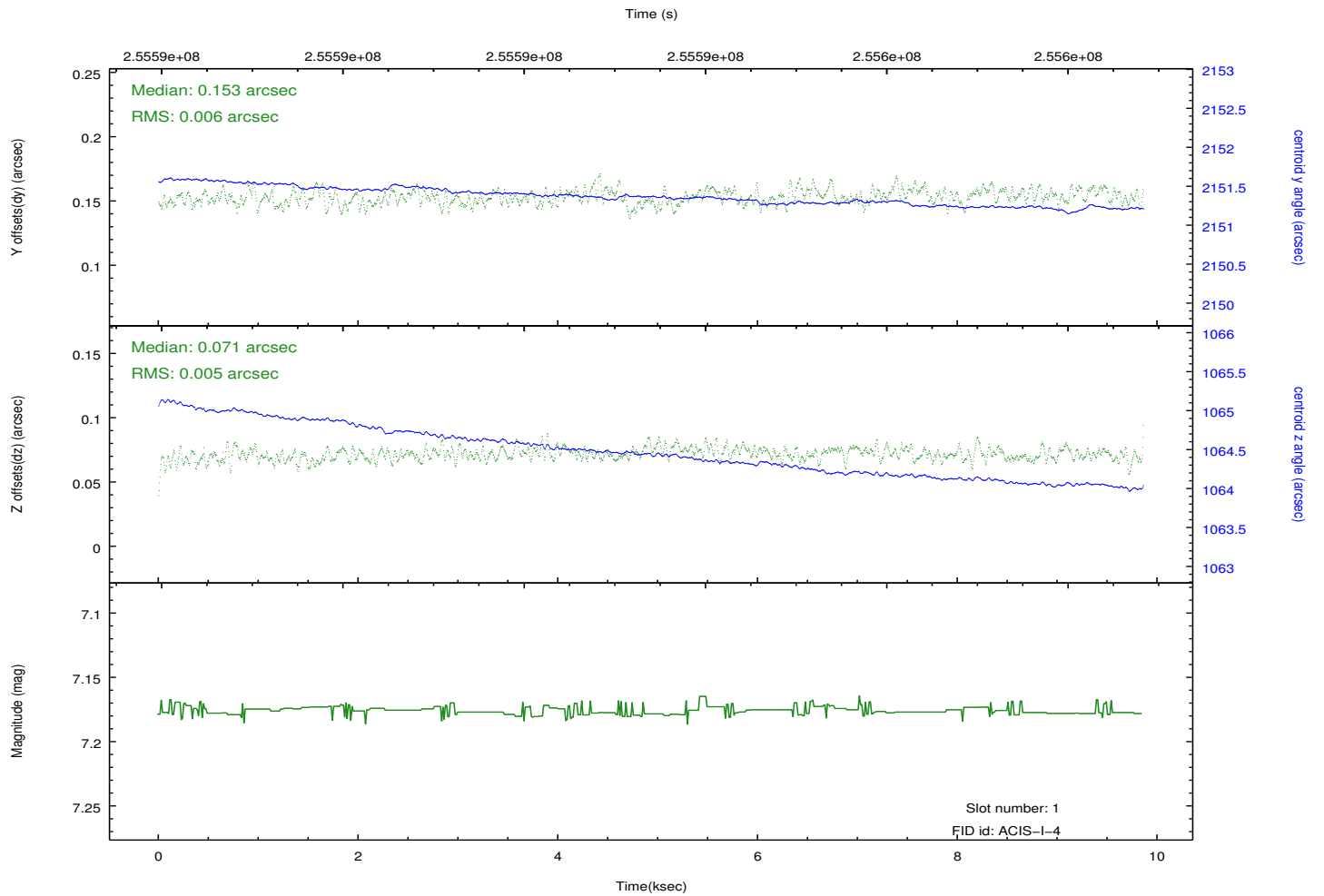
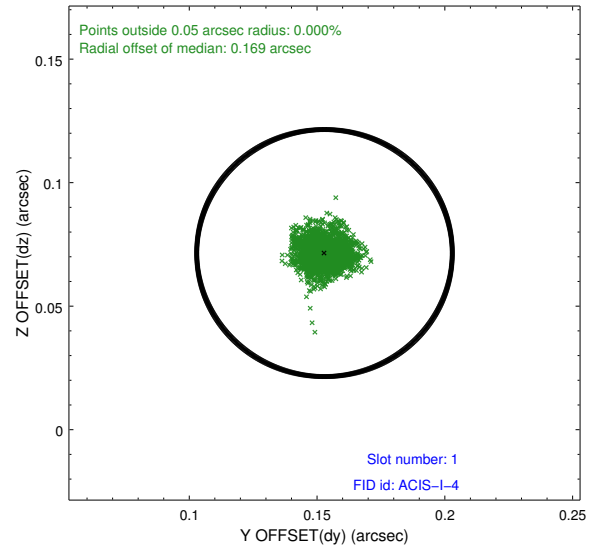
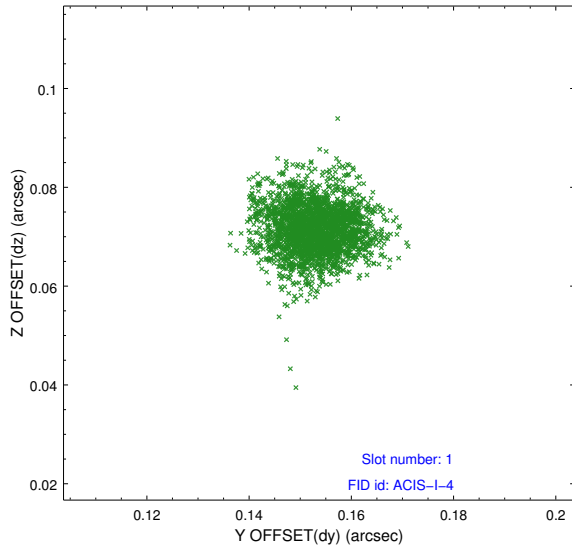


2.5 FID Slots

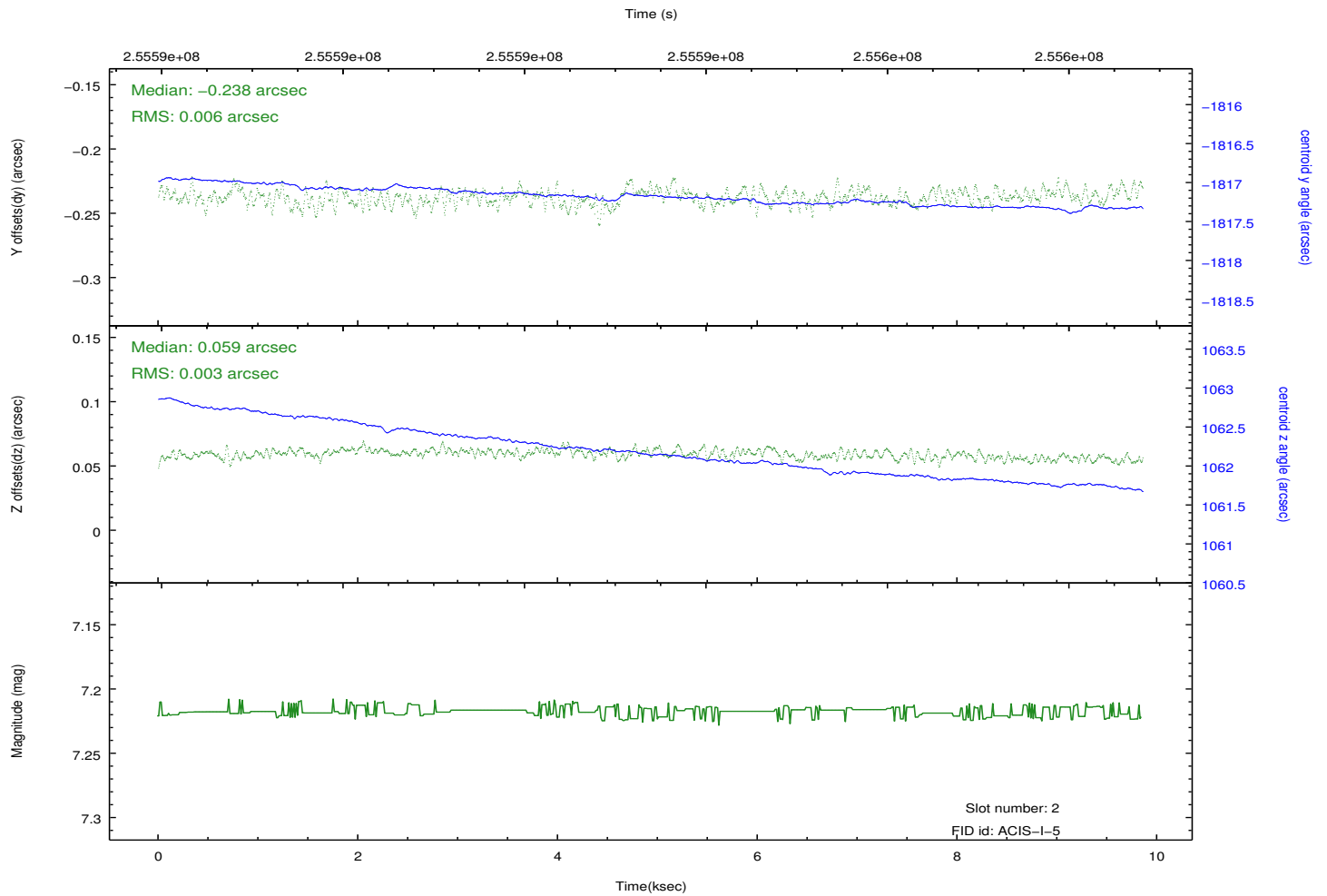
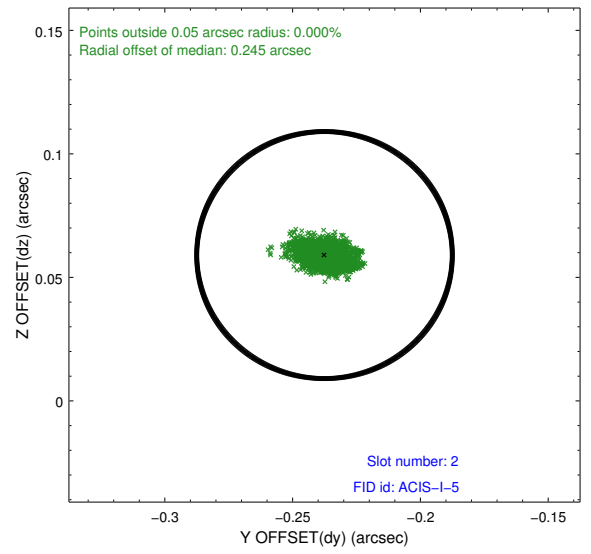
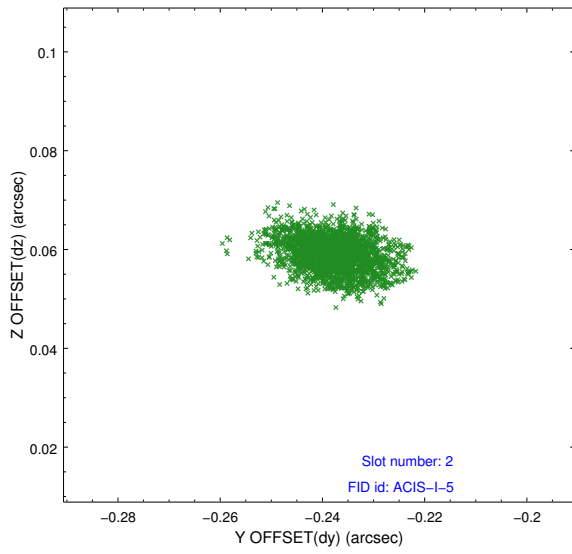
2.5.1 Slot 0



2.5.2 Slot 1



2.5.3 Slot 2



A Summary

A.1 Status

V&V Scientist	Jen Lauer
V&V Date (YYYY-MM-DD)	2012.03.27
V&V Edition	1
V&V Disposition and Status	OK
V&V Charge Time	9.71519996

A.2 Comments