

# V&V Reference Report

## L2 ASCDS Version : 8.5.1.1

Observation 5730 - L2 Version 3  
Chandra X-Ray Center

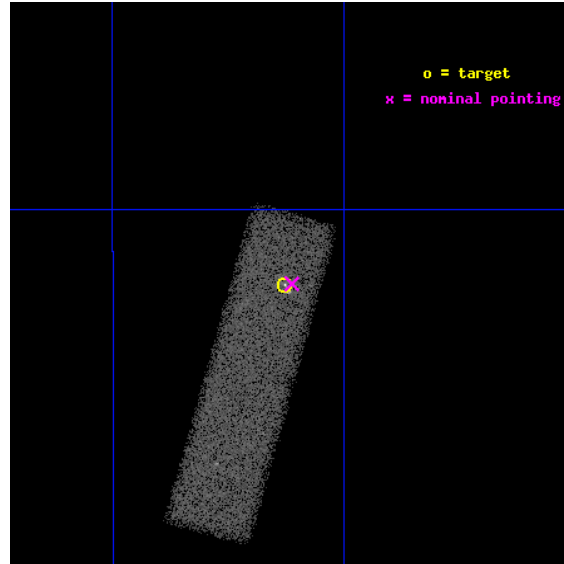
L2 Processing Date : Dec 30 2012

## Contents

<b>1</b>	<b>Front</b>	<b>2</b>
<b>2</b>	<b>OBI</b>	<b>3</b>
2.1	OBI . . . . .	3
2.1.1	Images . . . . .	3
2.1.2	Bias . . . . .	3
2.1.3	Parameters . . . . .	4
2.1.4	Events . . . . .	4
2.2	Compared Parameters . . . . .	5
2.3	Aspect . . . . .	6
2.4	Star Slots . . . . .	9
2.4.1	Slot 3 . . . . .	9
2.4.2	Slot 4 . . . . .	10
2.4.3	Slot 5 . . . . .	11
2.4.4	Slot 6 . . . . .	12
2.4.5	Slot 7 . . . . .	13
2.5	FID Slots . . . . .	14
2.5.1	Slot 0 . . . . .	14
2.5.2	Slot 1 . . . . .	15
2.5.3	Slot 2 . . . . .	16
<b>A</b>	<b>Summary</b>	<b>17</b>
A.1	Status . . . . .	17
A.2	Comments . . . . .	17

# 1 Front

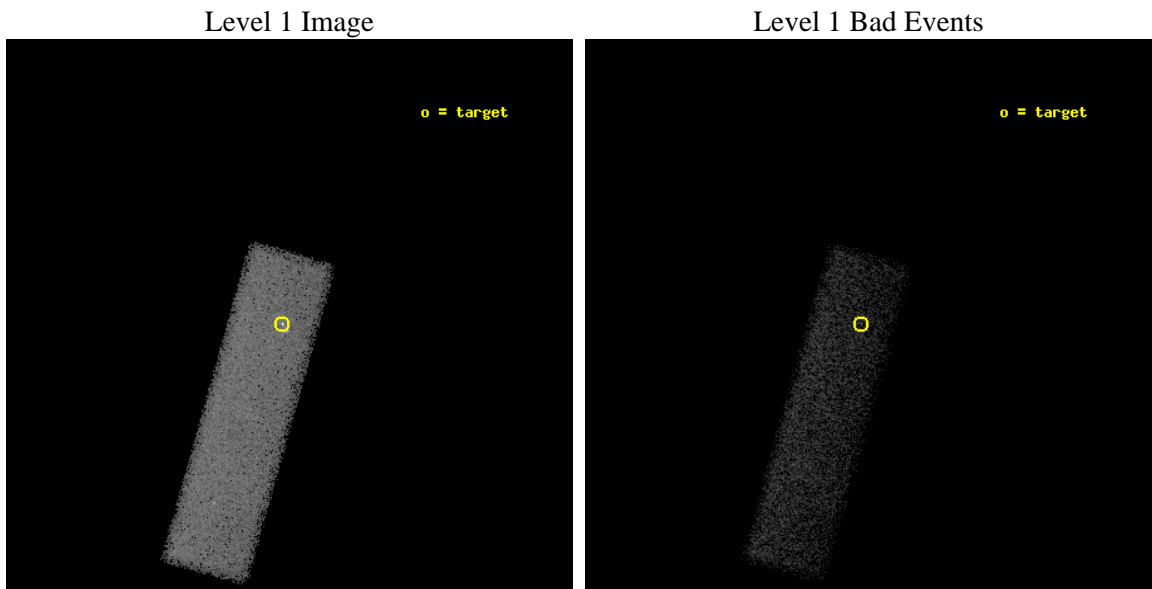
seq_num	701152	Sequence number
obs_id	5730	Observation id
title	A Study of the Physics of Extended Relativistic X-ray Jets, Discovered in our Chandra Survey	Proposal title
observer	Dr. Jonathan Gelbord	Principal investigator
object	PKS 1030-357	Source name
dtcycle	0	&#160
cycle	P	events from which exps? Prim/Second/Both
ra_targ	158.282083	Observer's specified target RA [deg]
dec_targ	-36.032472	Observer's specified target Dec [deg]
ra_nom	158.27837489355	Nominal RA [deg]
dec_nom	-36.03200778935	Nominal Dec [deg]
roll_nom	105.80660856345	Nominal Roll [deg]
revision	3	Processing version of data
ontime	30044.800447702	Sum of GTIs [s]
livetime	28578.712496626	Livetime [s]
ontime7	30044.800447702	Sum of GTIs [s]
l2events	36448	Number of level 2 events



## 2 OBI

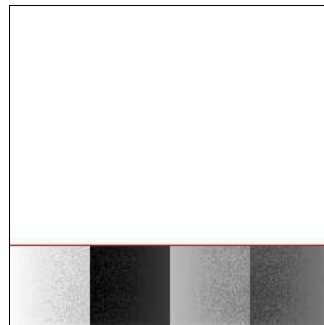
### 2.1 OBI

#### 2.1.1 Images



#### 2.1.2 Bias

Chip 7



### 2.1.3 Parameters

obi_num	2	Obi number	sched_exp_time	29938.524000	[s] Scheduled observation exposure time
ascdsver	8.5.1.1	Processing system revision	ontime	30044.800447702	Sum of GTIs [s]
caldbver	4.5.5	&#160	ontime7	30044.800447702	Sum of GTIs [s]
date	2012-12-30T22:22:06	Date and time of file creation	l1events	84762	Number of level 1 events
revision	3	Processing version of data			

### 2.1.4 Events

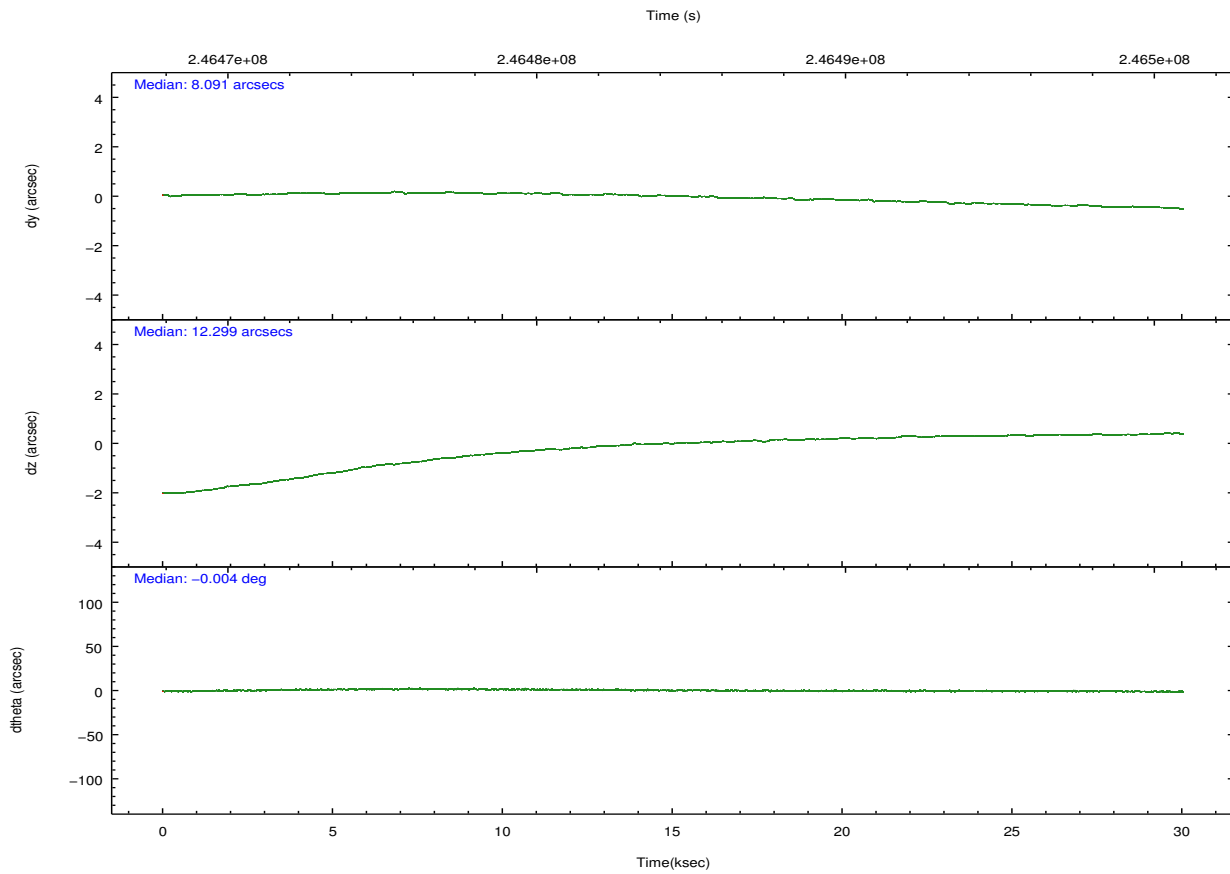
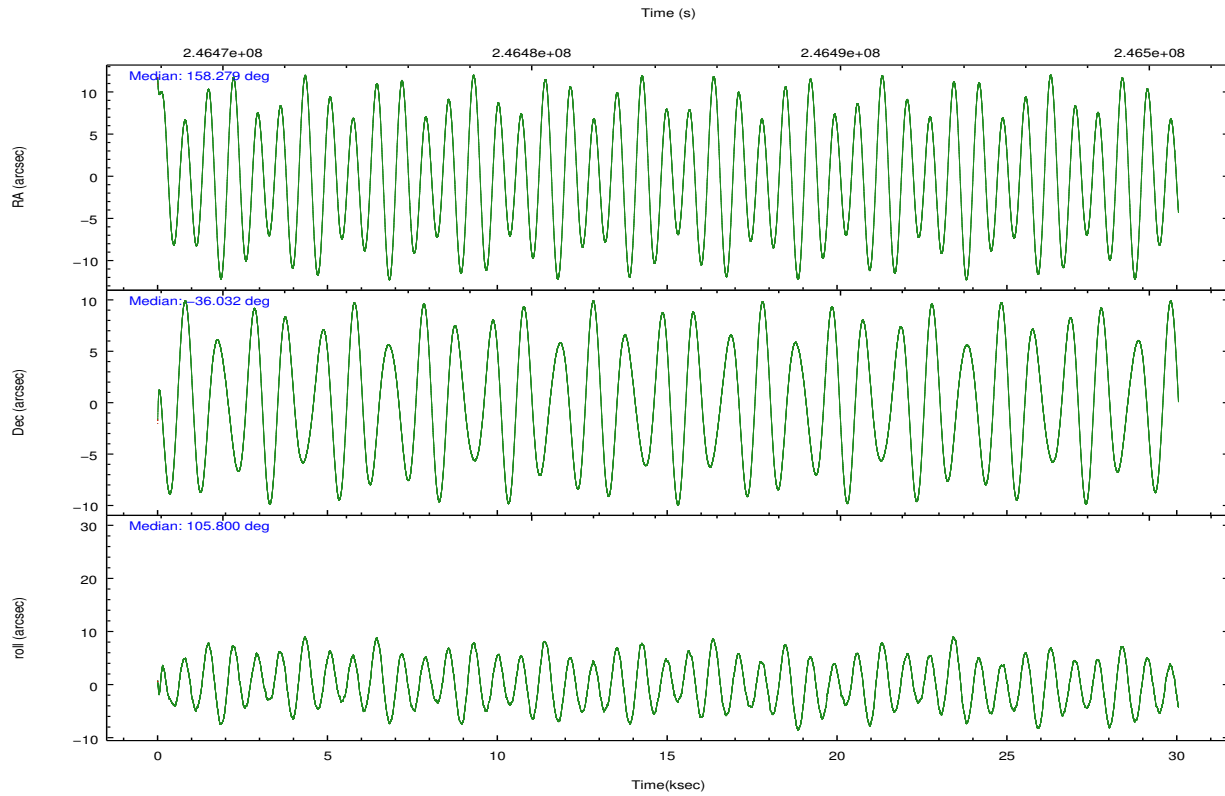
	<b>ccd 7</b>
level 1 events	84762
rejected events	47447
rejected %	<b>55%</b>

	<b>ccd 7</b>
grade 0 events	3836
	4%
grade 1 events	111
	0%
grade 2 events	7582
	8%
grade 3 events	4189
	4%
grade 4 events	4089
	4%
grade 5 events	7593
	8%
grade 6 events	18883
	22%
grade 7 events	38479
	45%

## 2.2 Compared Parameters

Parameter	Planned	Actual	Parameter	Planned	Actual
Instrument	ACIS	ACIS	Obspar format version number	7	7
Detector	ACIS-7	ACIS-7	Obspar file type	PREDICTED	ACTUAL
Grating	NONE	NONE	Obspar update status	NONE	UPDATED
Data mode	FAINT	FAINT	Number of optional ACIS chips dropped	0	0
Observation mode	POINTING	POINTING	On-chip summing requested	N	N
[deg] Pointing RA	158.302831	158.2783748935501	Subarray requested	CUSTOM	1/4
[deg] Pointing Dec	-36.050739	-36.03200778934974	Subarray start row	1	1
[deg] Pointing Roll	105.664378	105.8066085634503	Subarray row count	256	256
[mm] SIM focus pos	-0.684267	-0.6828225247311905	Alternating exposures requested	N	N
[mm] SIM defocus	0	0.001444936568705701	[s] Primary exposure time	0.000000	0.8
[mm] SIM translation stage pos	-179.932523	-179.9244029796336			
[mm] SIM translation stage offset	-10.2	-10.2081196033742			
[s] Observation start time (MET)	246469504.184000	246468233.30157			
Observation start date	2005-10-23T15:44:00	2005-10-23T15:23:53			
[s] Observation end time (MET)	246499443.184000	246499655.19051			
Observation end date	2005-10-24T00:02:59	2005-10-24T00:07:35			
Read mode	TIMED	TIMED			

## 2.3 Aspect

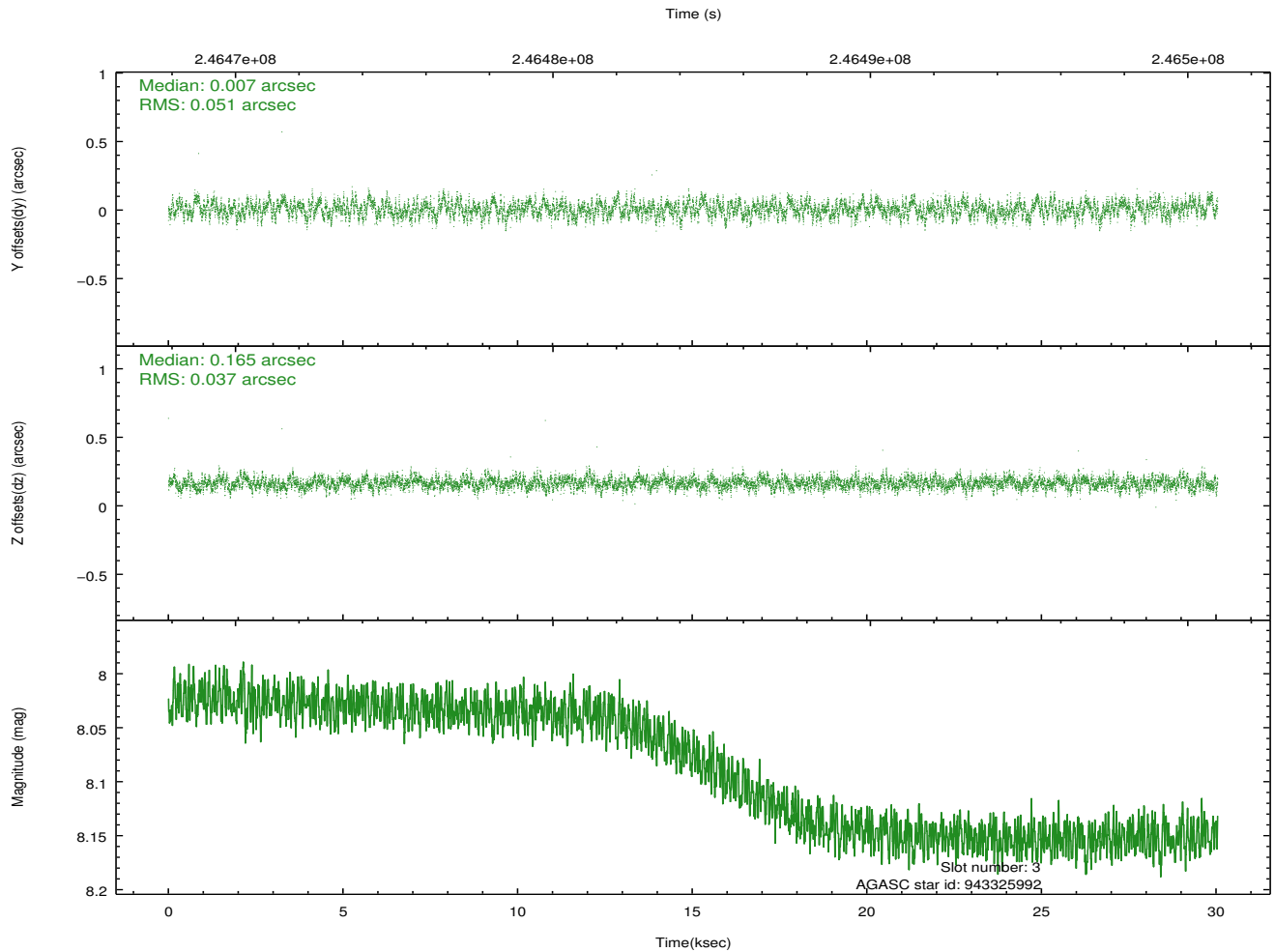
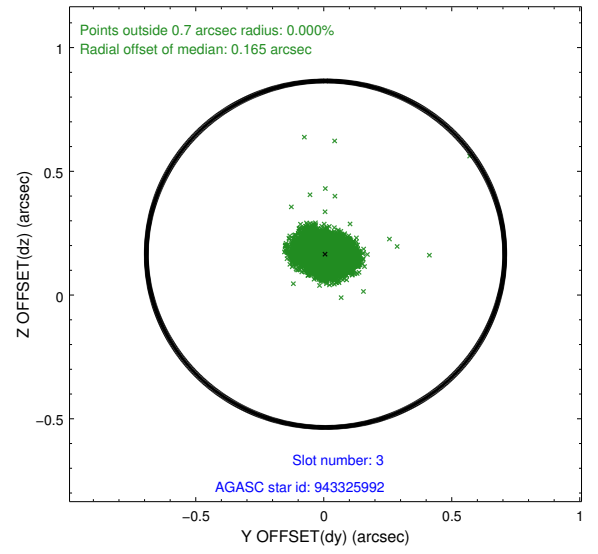
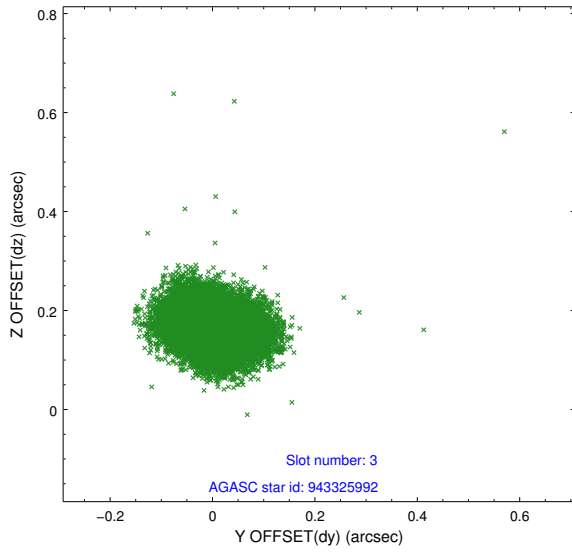


### Slot Statistics

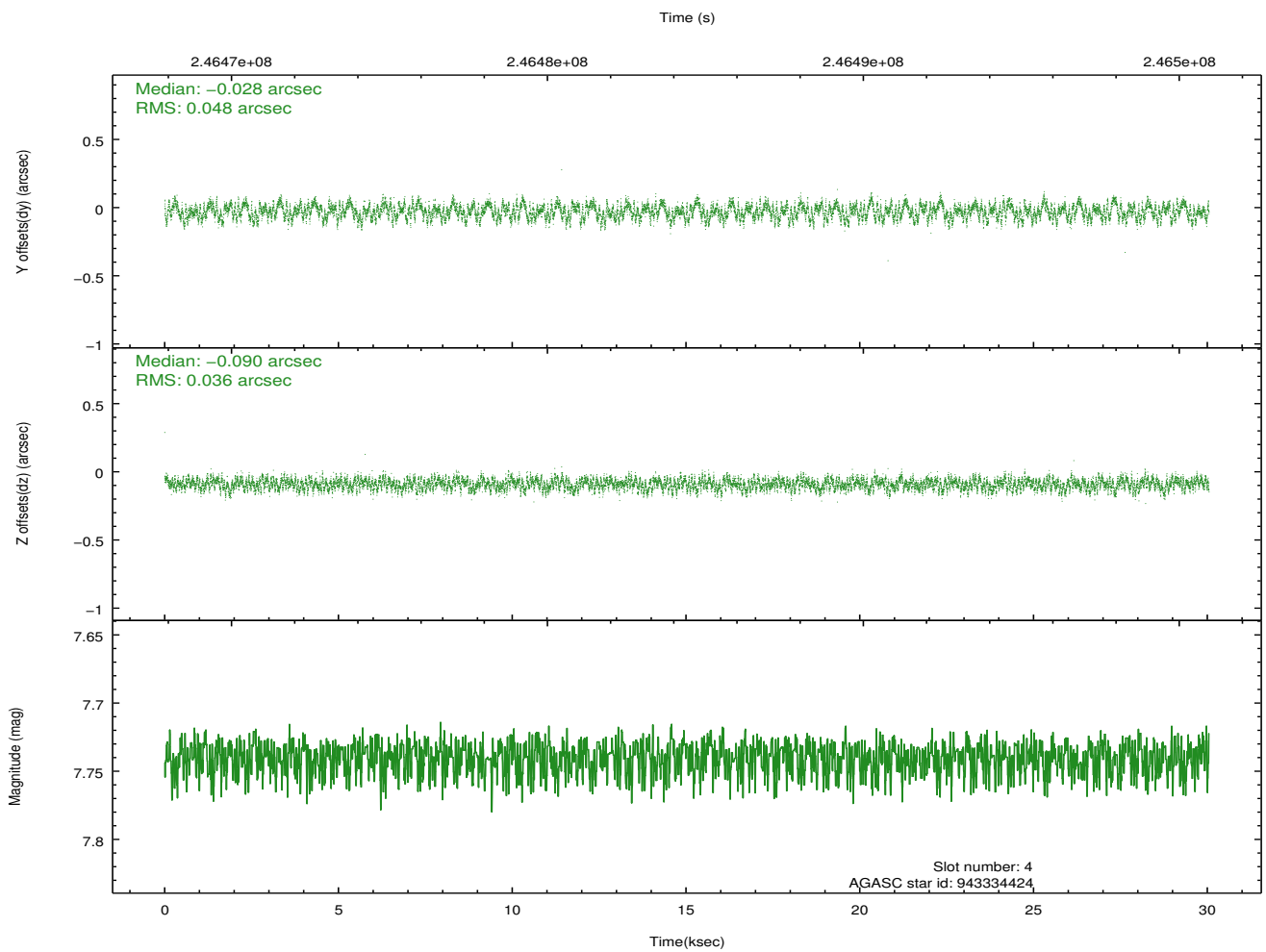
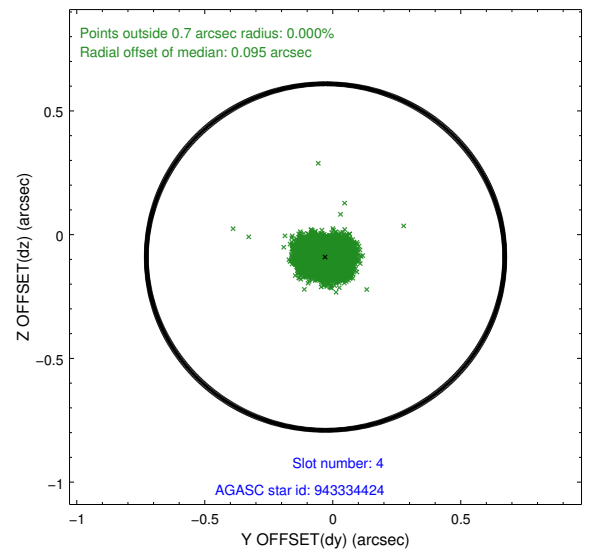
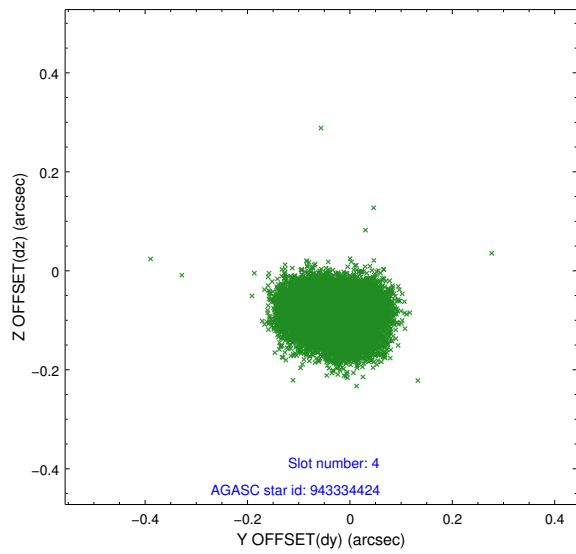
slot	status	id	mag	n_pts	med_dy	med_dz	dr1	dr2	ra	dec	mean_y	mean_z
0	FID	ACIS-S-2	7.07	7329	-0.102	-0.395	0.022	0.037	0.000000	0.000000	-760.15	-1943.88
1	FID	ACIS-S-4	7.17	7329	0.116	0.154	0.010	0.020	0.000000	0.000000	2153.31	-34.97
2	FID	ACIS-S-5	7.23	7329	-0.048	0.249	0.020	0.030	0.000000	0.000000	-1812.84	-41.12
3	GUIDE	943325992	8.08	14656	0.007	0.165	0.067	0.106	158.372385	-36.065991	-107.32	-179.33
4	GUIDE	943334424	7.74	14658	-0.028	-0.090	0.066	0.101	158.168911	-36.456574	-1302.04	768.39
5	GUIDE	943337000	8.33	14656	-0.097	0.151	0.061	0.101	159.054920	-36.366983	-1692.89	-1789.32
6	GUIDE	943342224	8.36	14652	0.084	-0.072	0.053	0.086	158.218692	-36.637369	-1967.77	804.13
7	GUIDE	943331040	9.21	14649	0.031	-0.149	0.097	0.164	157.716739	-36.786172	-2098.71	2343.38

## 2.4 Star Slots

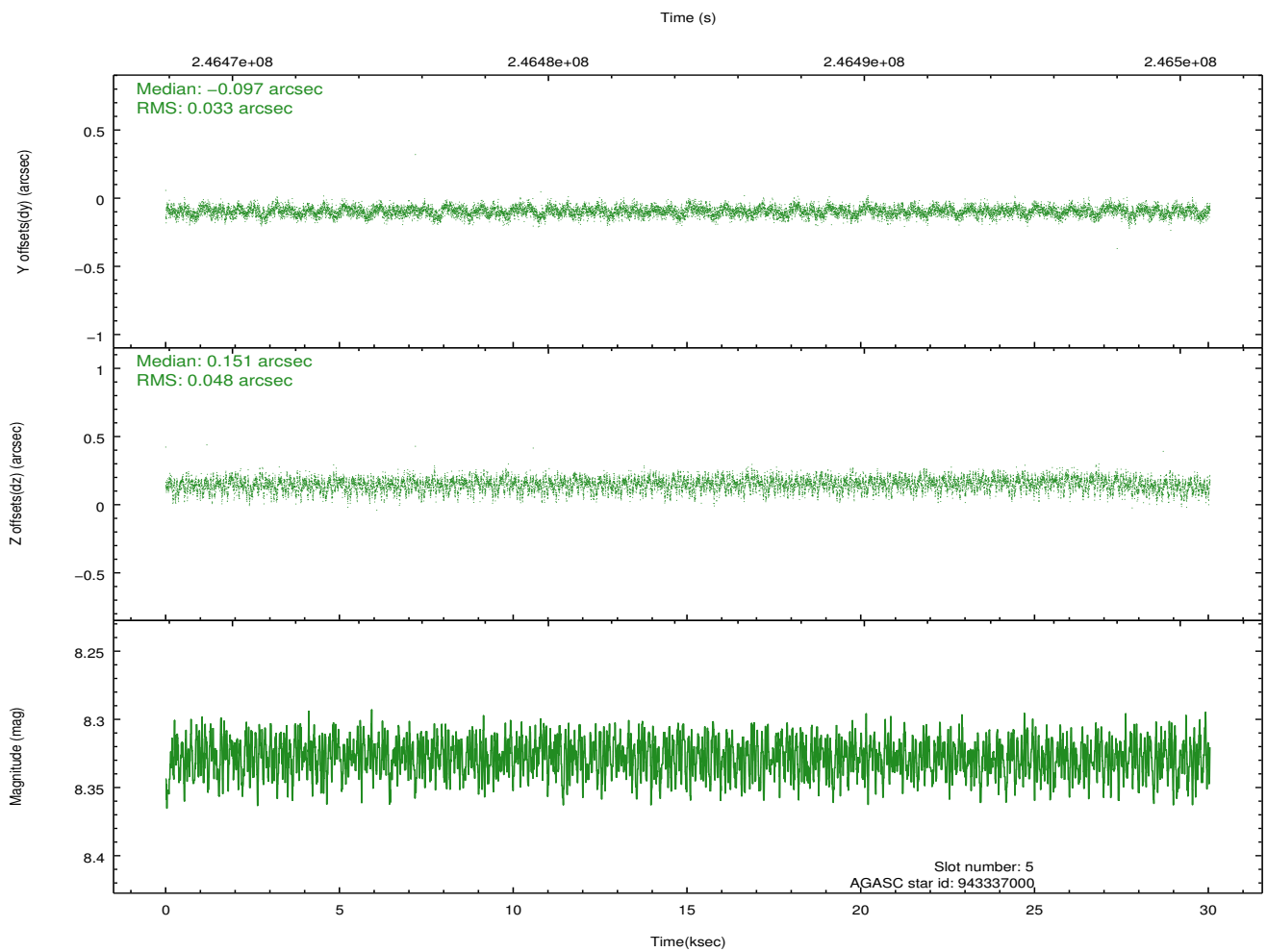
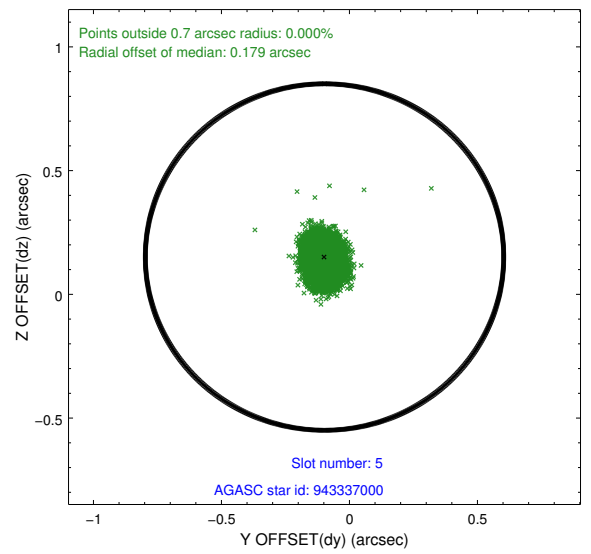
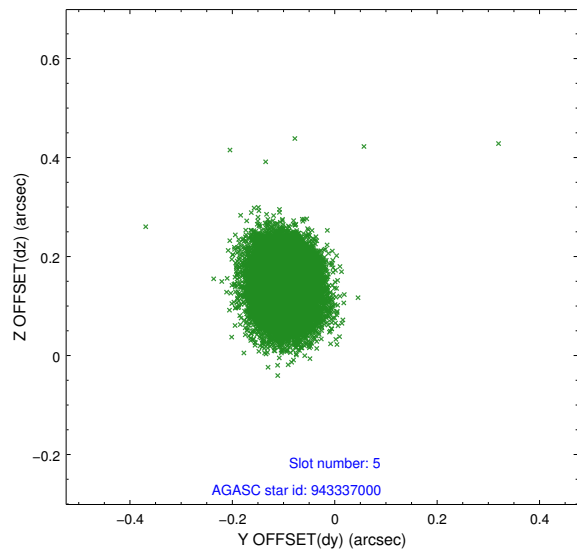
### 2.4.1 Slot 3



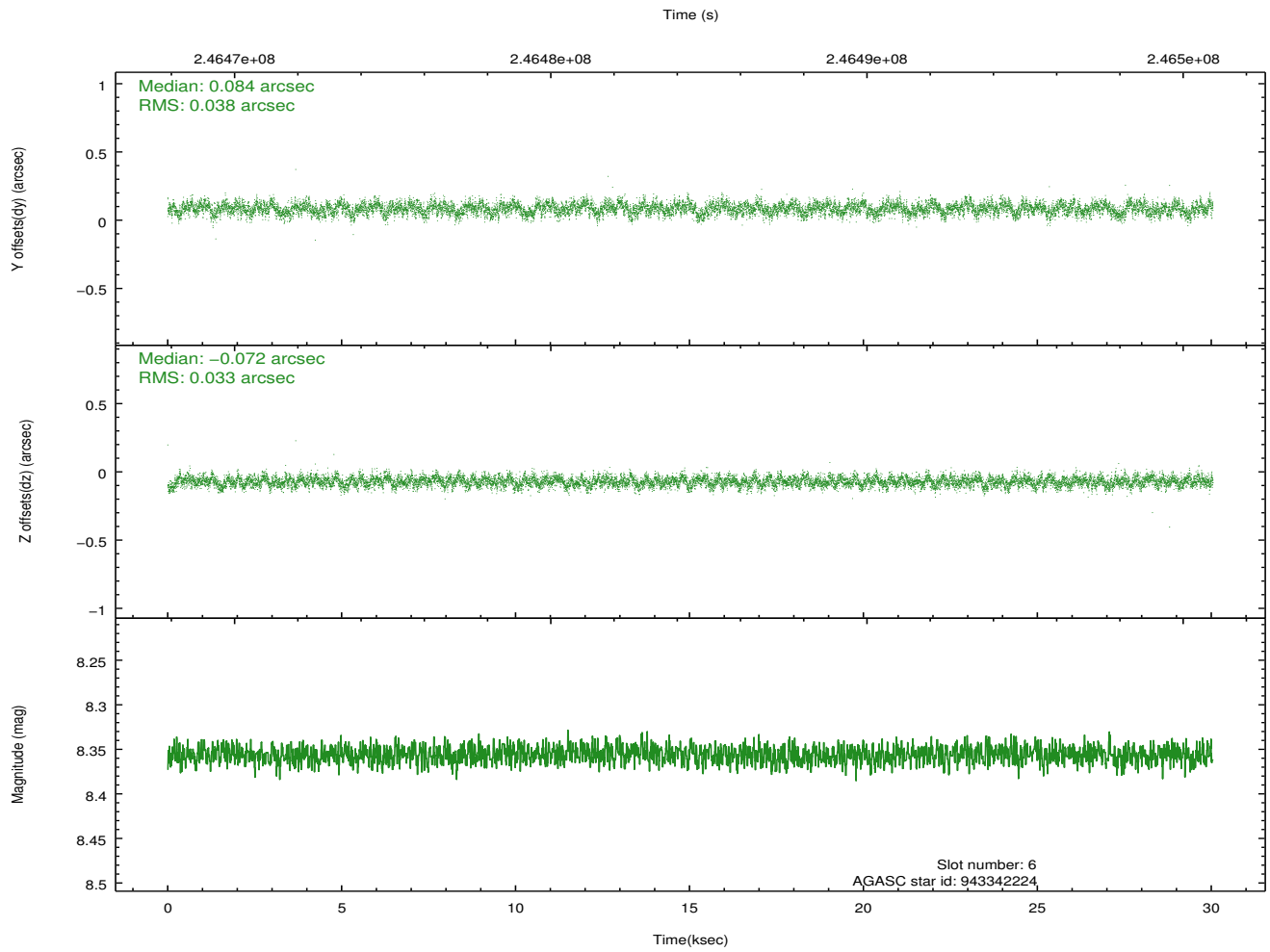
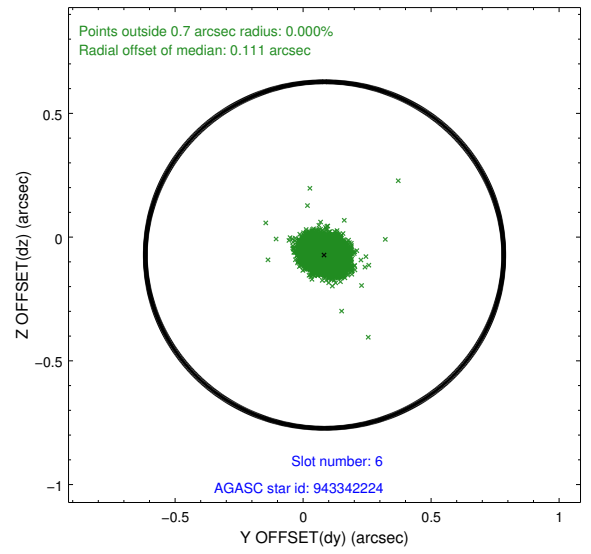
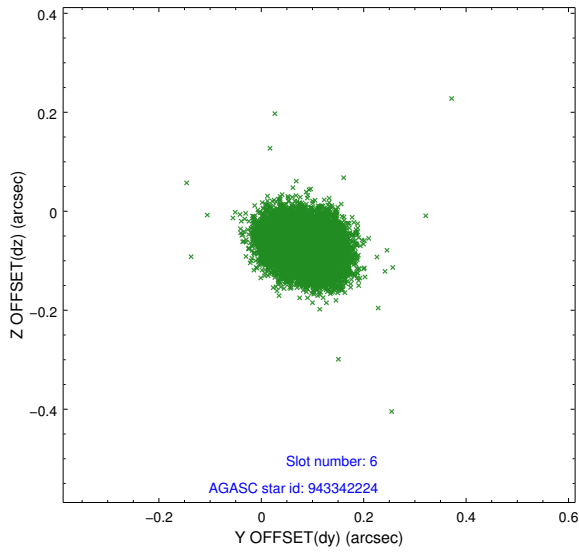
## 2.4.2 Slot 4



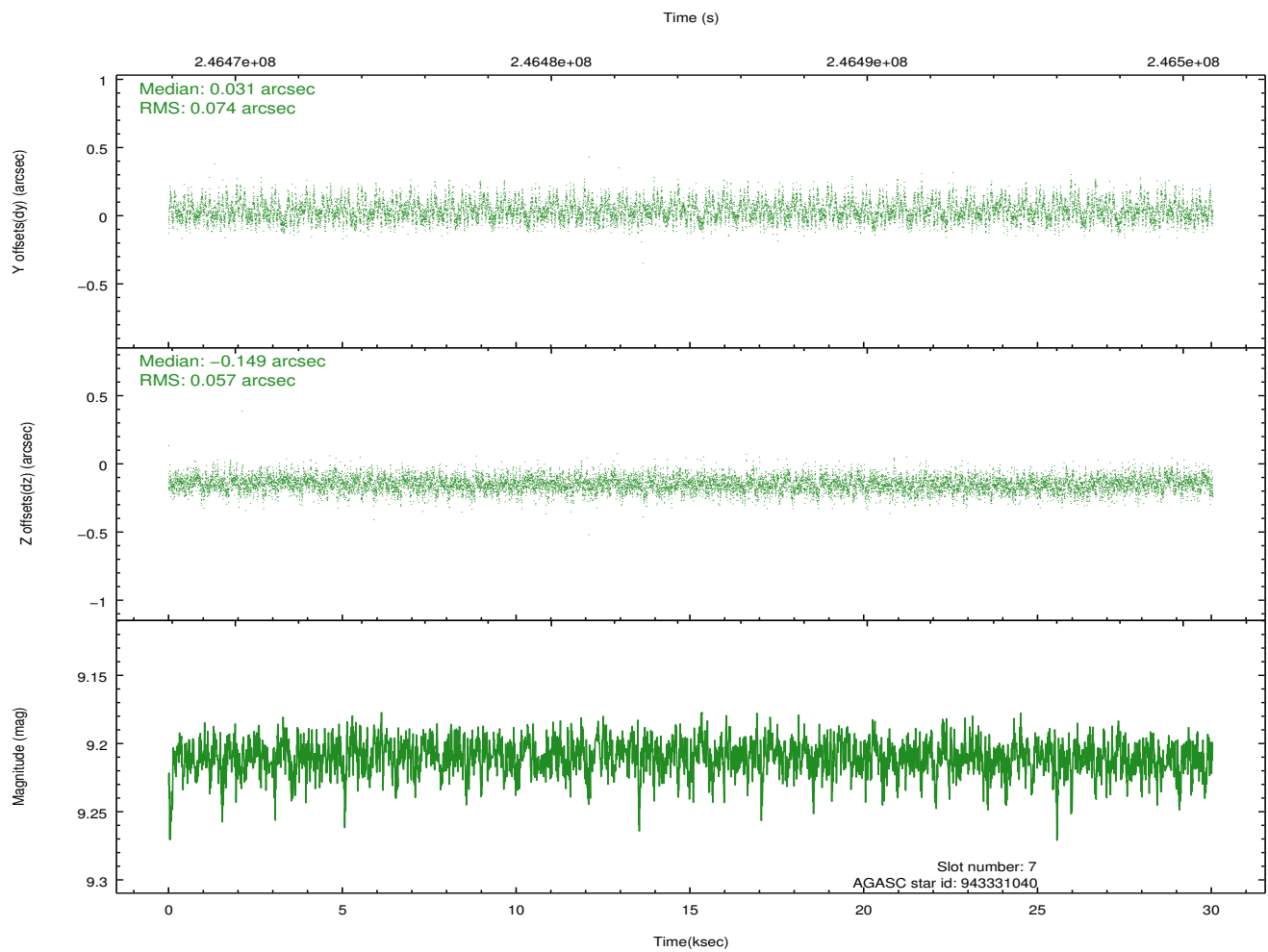
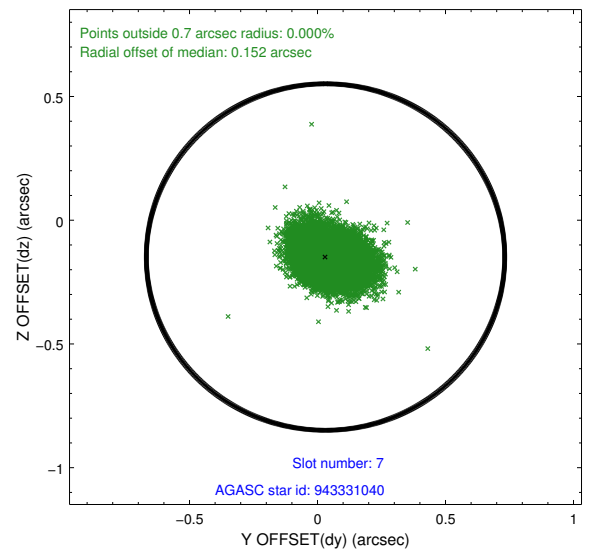
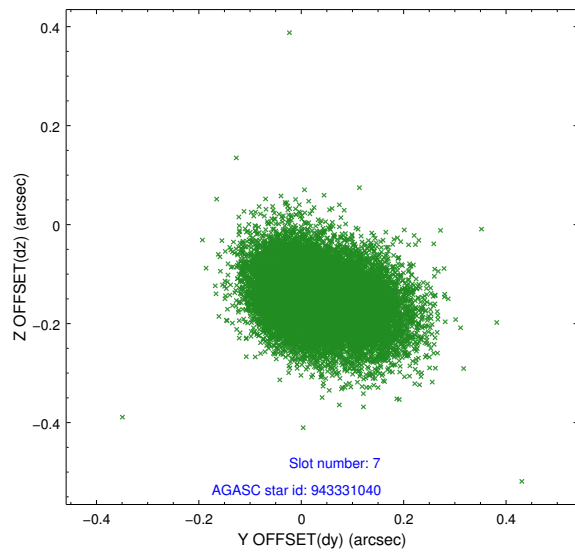
### 2.4.3 Slot 5



## 2.4.4 Slot 6

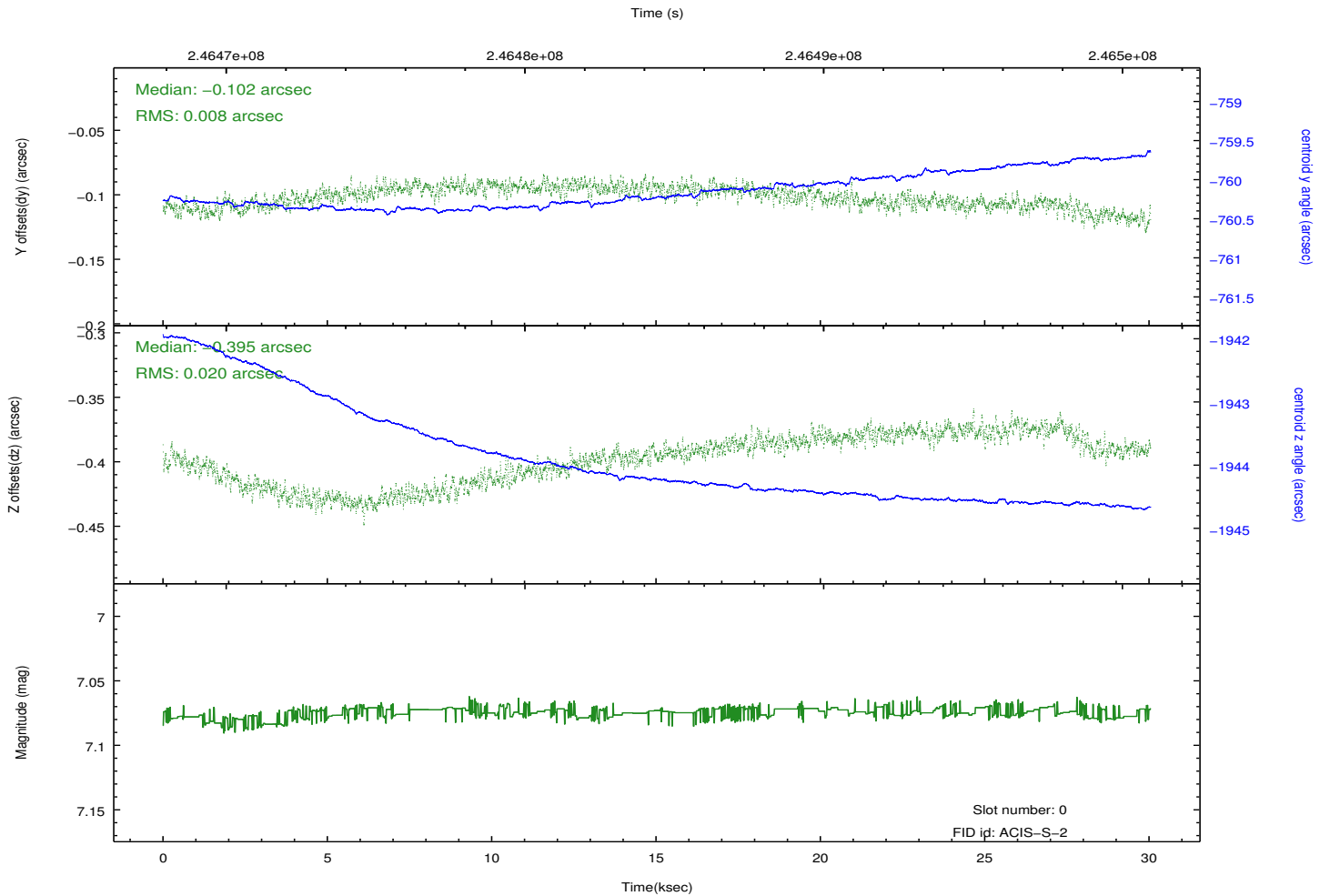
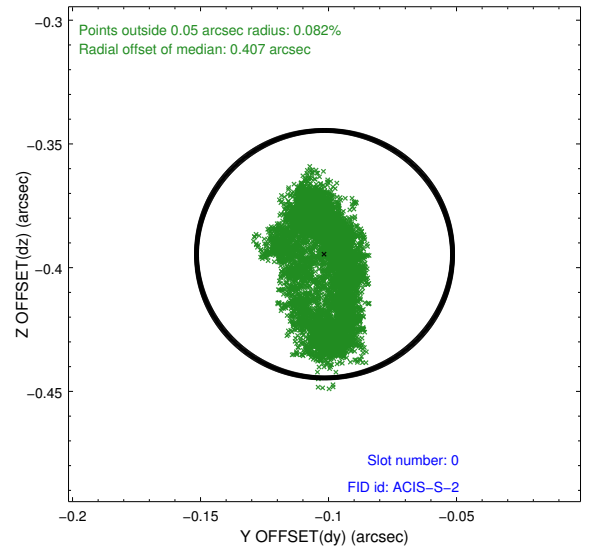
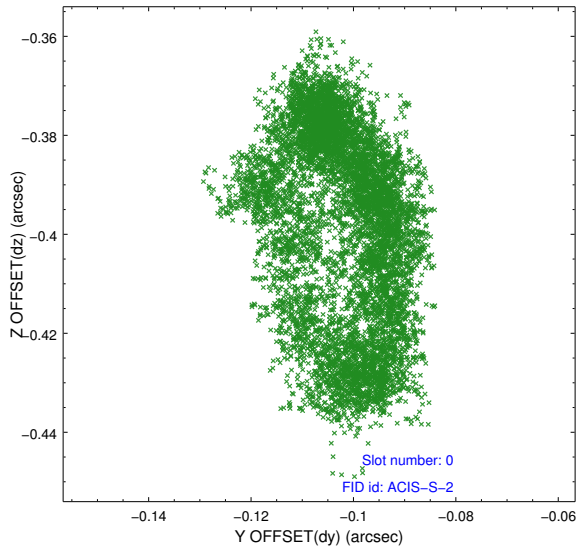


## 2.4.5 Slot 7

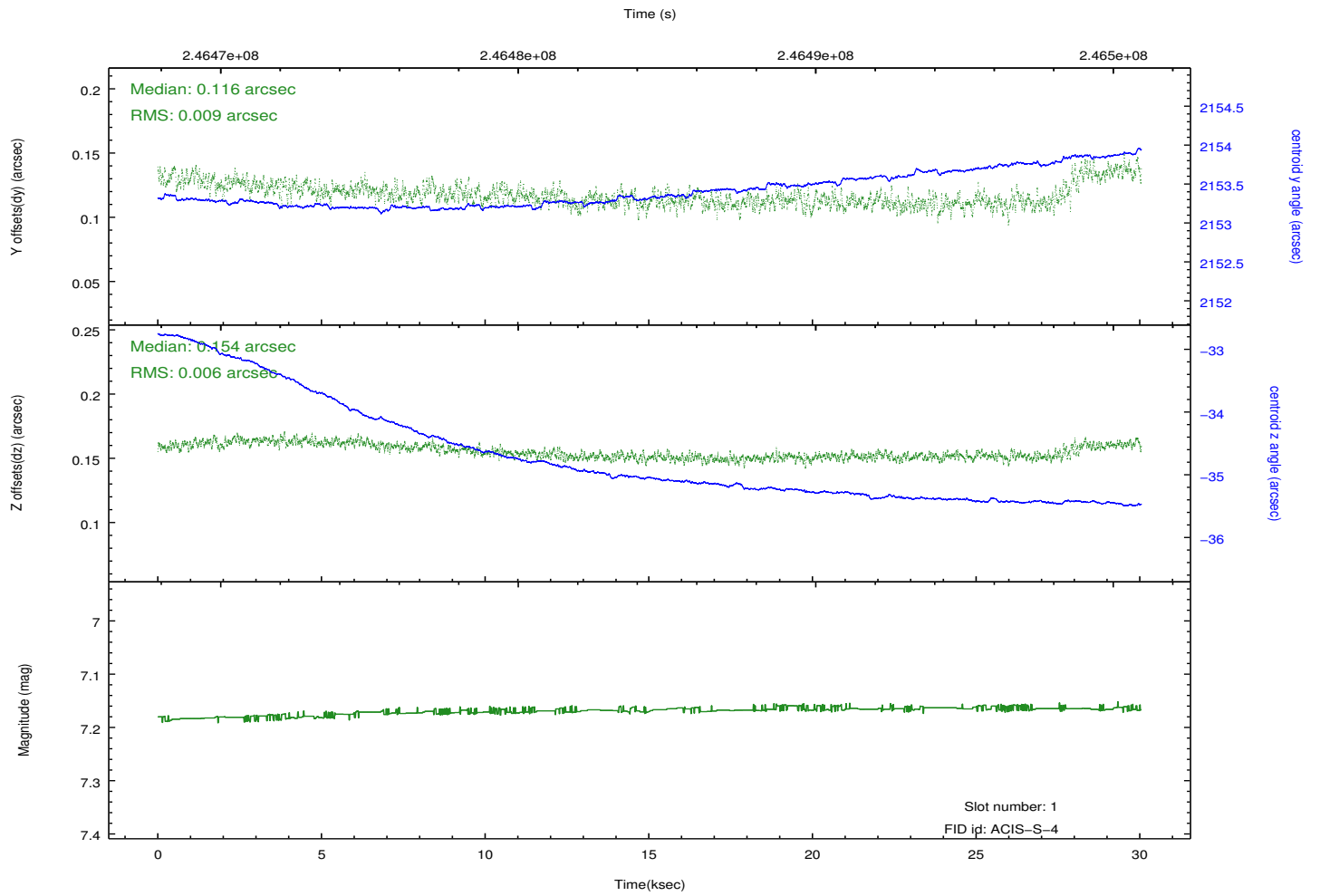
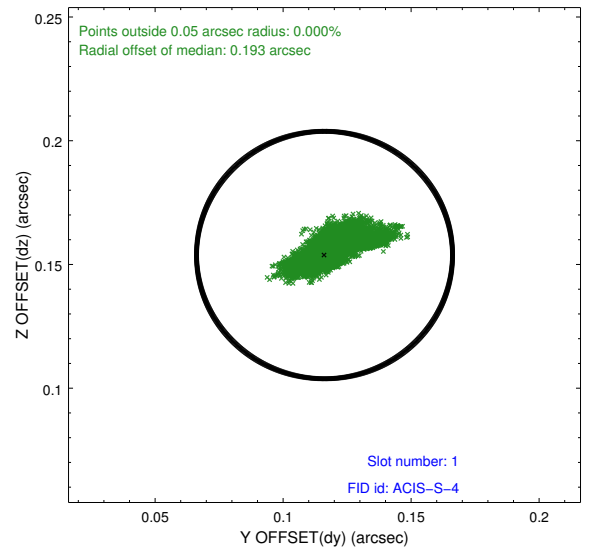
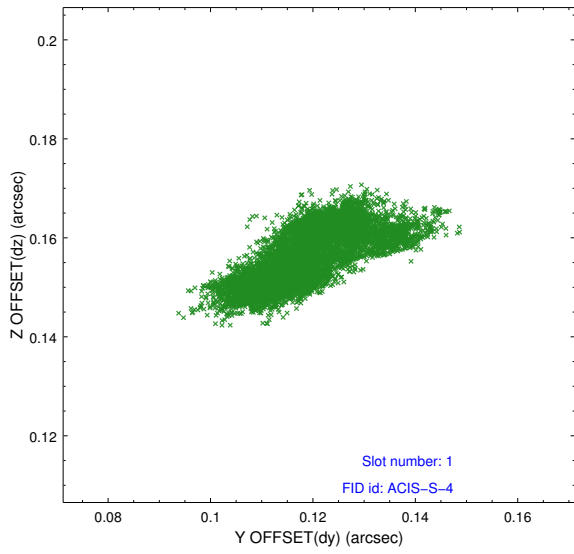


## 2.5 FID Slots

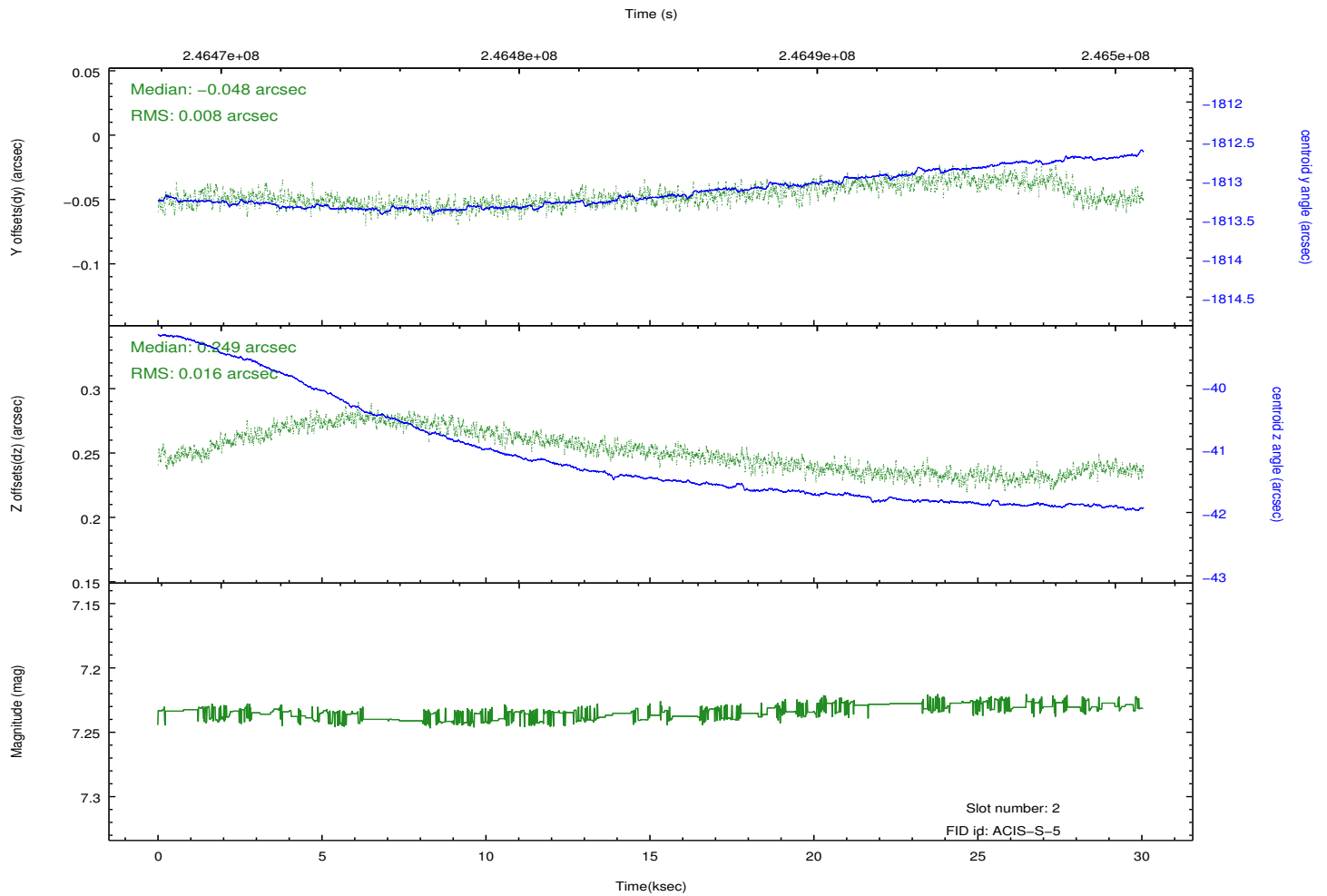
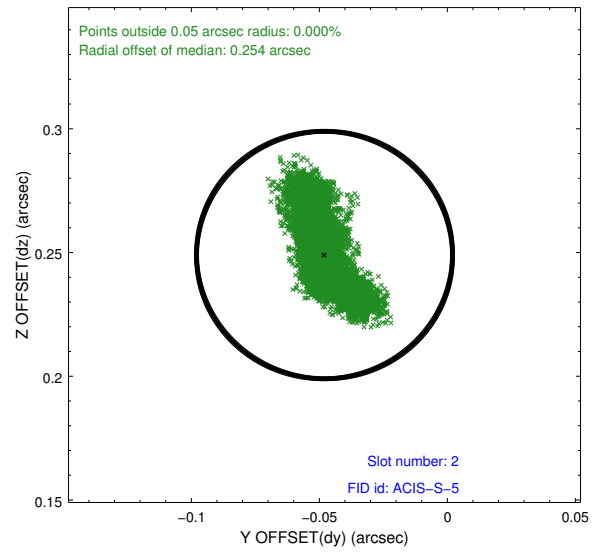
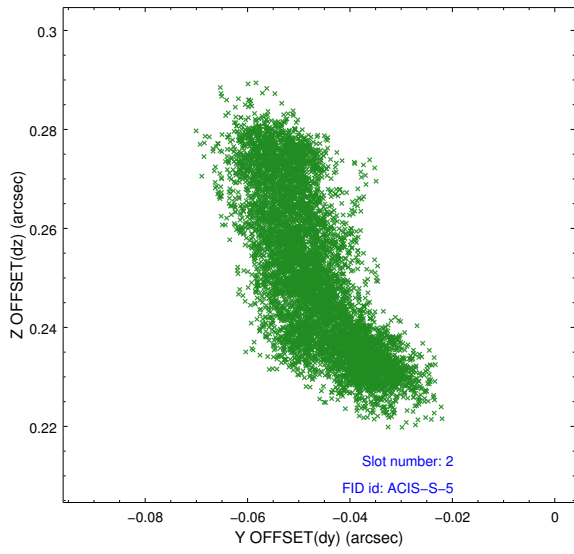
### 2.5.1 Slot 0



## 2.5.2 Slot 1



### 2.5.3 Slot 2



# A Summary

## A.1 Status

V&V Scientist	Jen Lauer
V&V Date (YYYY-MM-DD)	2013.01.30
V&V Edition	1
V&V Disposition and Status	OK
V&V Charge Time	30.0448

## A.2 Comments

Joint Proposal: HST. Roll preference met.