

V&V Reference Report

L2 ASCDS Version : 8.4.3

Observation 5780 - L2 Version 2
Chandra X-Ray Center

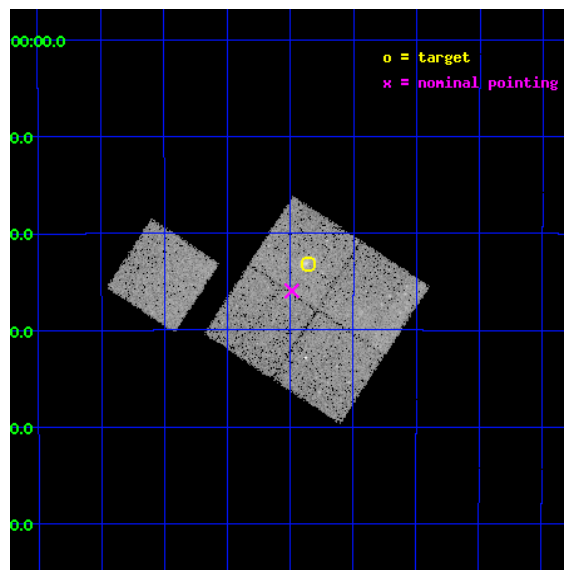
L2 Processing Date : Mar 23 2012

Contents

1	Front	2
2	OBI	3
2.1	OBI	3
2.1.1	Images	3
2.1.2	Bias	3
2.1.3	Parameters	4
2.1.4	Events	4
2.2	Compared Parameters	5
2.3	Aspect	6
2.4	Star Slots	9
2.4.1	Slot 3	9
2.4.2	Slot 4	10
2.4.3	Slot 5	11
2.4.4	Slot 6	12
2.4.5	Slot 7	13
2.5	FID Slots	14
2.5.1	Slot 0	14
2.5.2	Slot 1	15
2.5.3	Slot 2	16
A	Summary	17
A.1	Status	17
A.2	Comments	17

1 Front

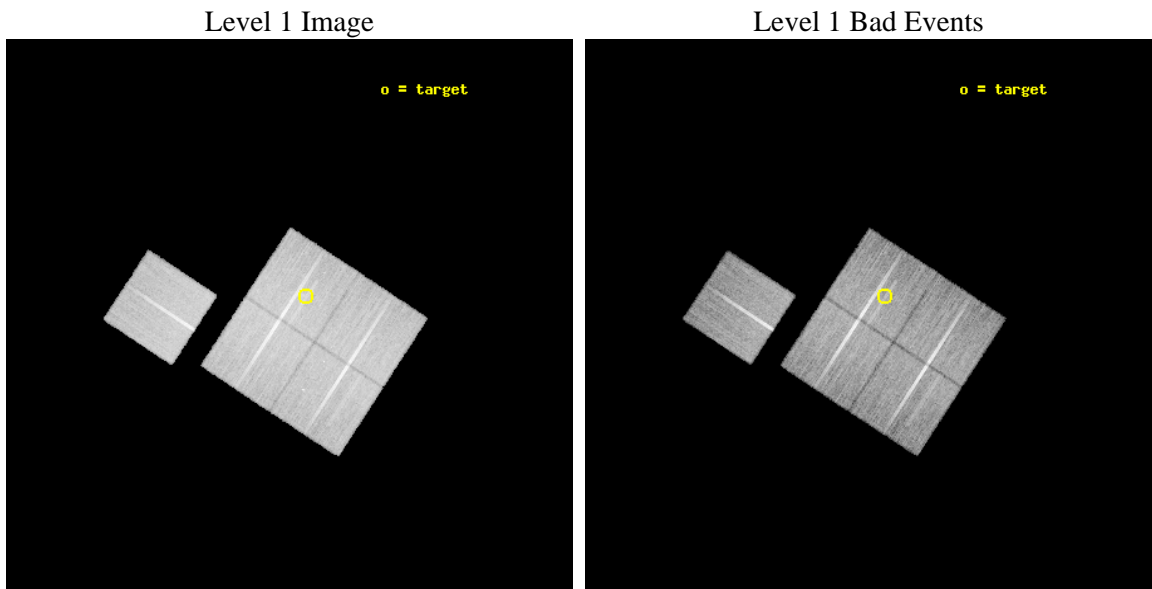
seq_num	800493	Sequence number
obs_id	5780	Observation id
title	Chandra observations of high-redshift clusters of galaxies from the 400 Square Degrees ROSAT PSPC survey	Proposal title
observer	Dr Stephen Murray	Principal investigator
object	cl0340-2823	Source name
dtcycle	0	
cycle	P	events from which exps? Prim/Second/Both
ra_targ	55.215	Observer's specified target RA [deg]
dec_targ	-28.386111	Observer's specified target Dec [deg]
ra_nom	55.246891214404	Nominal RA [deg]
dec_nom	-28.432620536841	Nominal Dec [deg]
roll_nom	303.21599502954	Nominal Roll [deg]
revision	2	Processing version of data
ontime	25050.898704916	Sum of GTIs [s]
livetime	24723.590271133	Livetime [s]
ontime0	25047.634594738	Sum of GTIs [s]
ontime1	25047.67565465	Sum of GTIs [s]
ontime2	25050.857664913	Sum of GTIs [s]
ontime3	25050.898704916	Sum of GTIs [s]
ontime6	25047.593574643	Sum of GTIs [s]
l2events	74126	Number of level 2 events



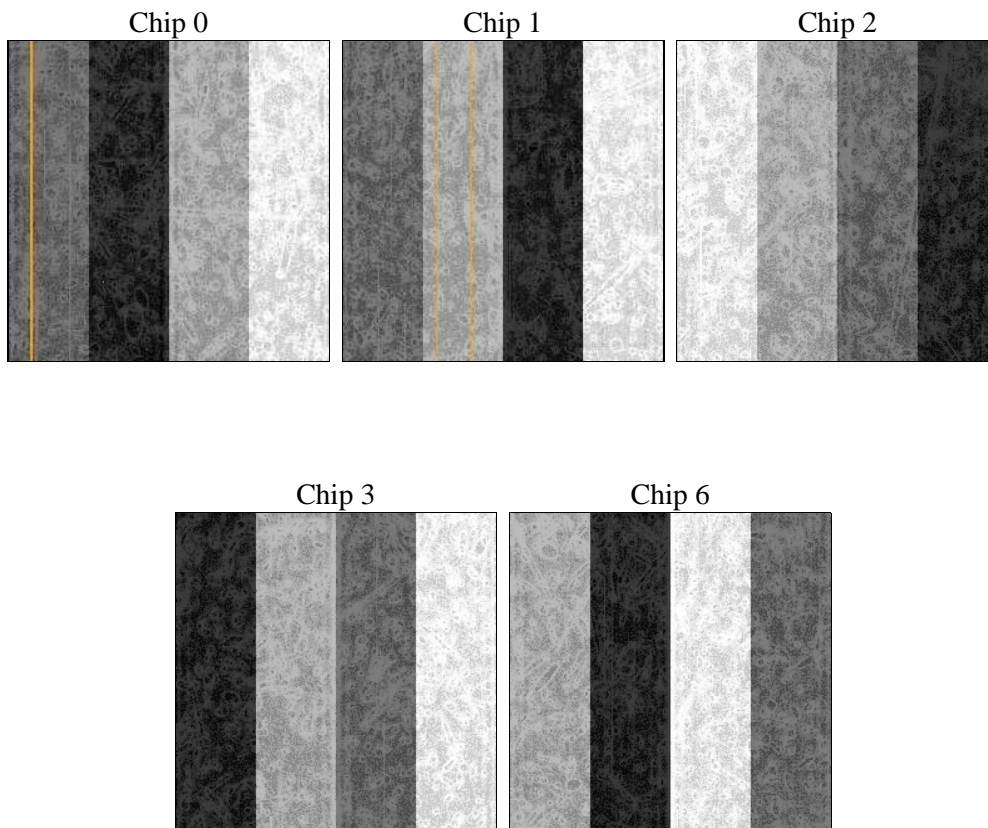
2 OBI

2.1 OBI

2.1.1 Images



2.1.2 Bias



2.1.3 Parameters

obi_num	2	Obi number	sched_exp_time	25000.000000	[s] Scheduled observation exposure time
ascdsver	8.4.3.1	Processing system revision	ontime	25050.898704916	Sum of GTIs [s]
caldbver	4.4.8	 	ontime0	25047.634594738	Sum of GTIs [s]
date	2012-03-23T14:24:40	Date and time of file creation	ontime1	25047.67565465	Sum of GTIs [s]
revision	2	Processing version of data	ontime2	25050.857664913	Sum of GTIs [s]
			ontime3	25050.898704916	Sum of GTIs [s]
			ontime6	25047.593574643	Sum of GTIs [s]
			l1events	859265	Number of level 1 events

2.1.4 Events

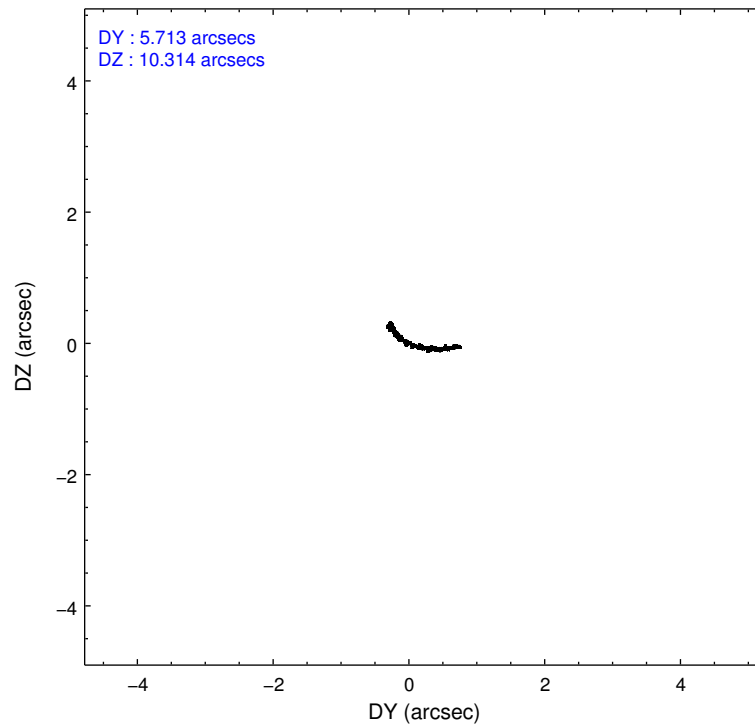
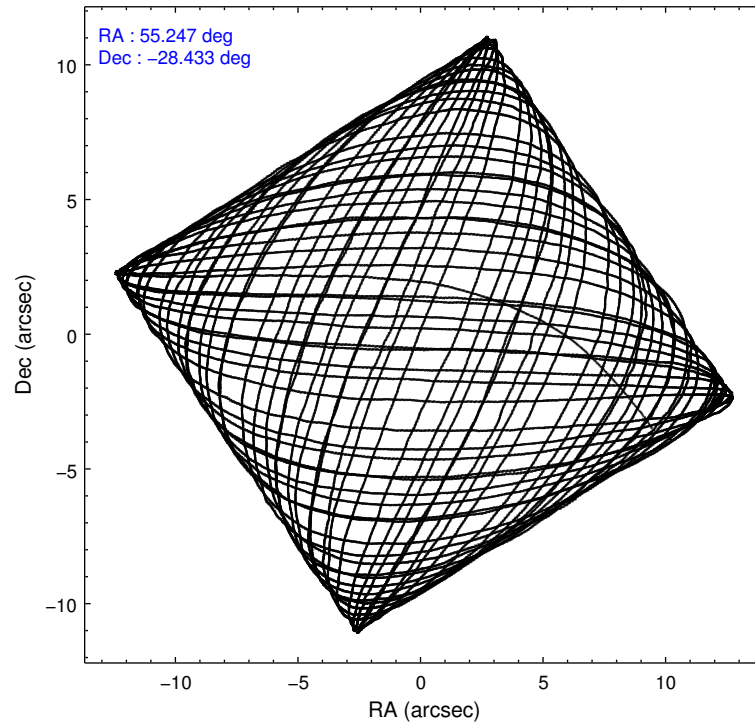
	ccd 0	ccd 1	ccd 2	ccd 3	ccd 6
level 1 events	163850	165920	182831	174514	172150
rejected events	146109	146304	166327	156861	154552
rejected %	89%	88%	90%	89%	89%

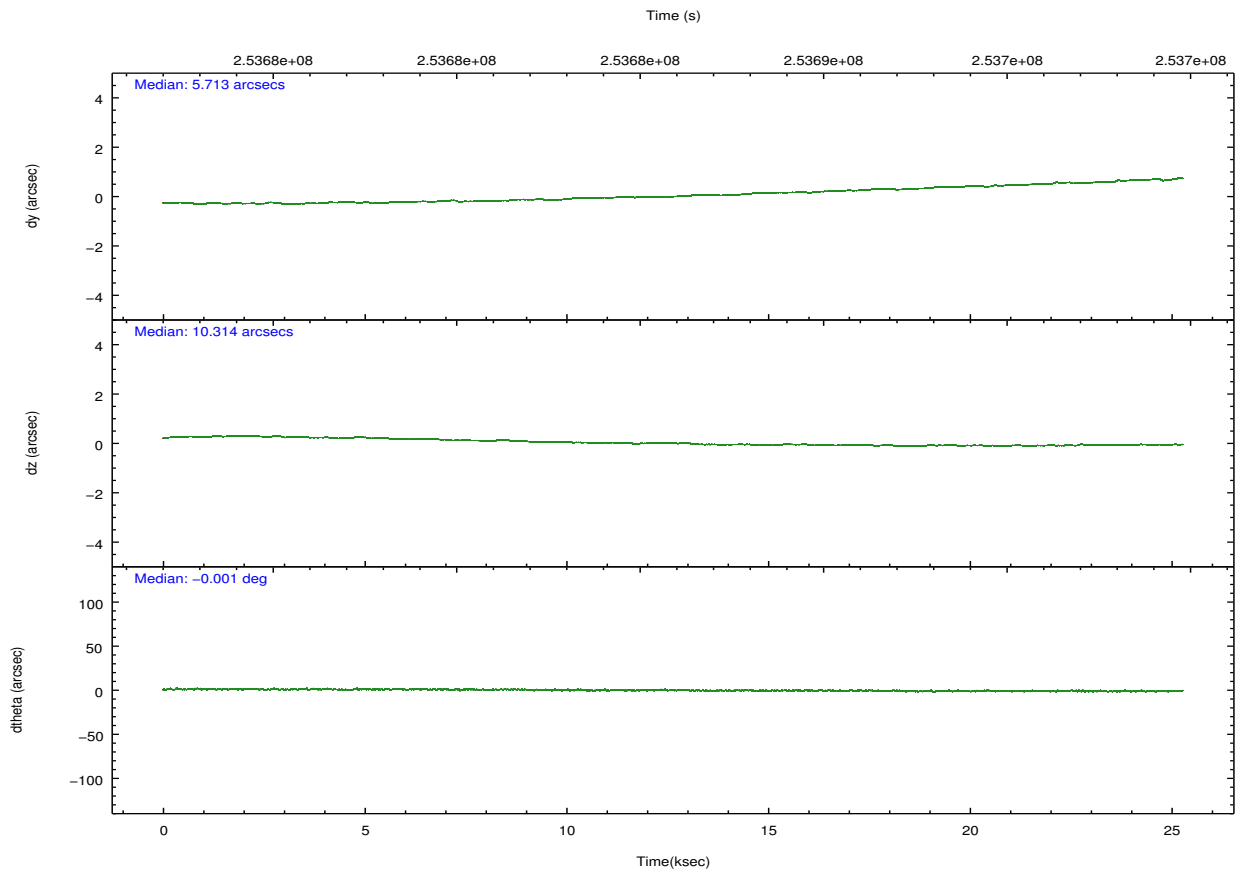
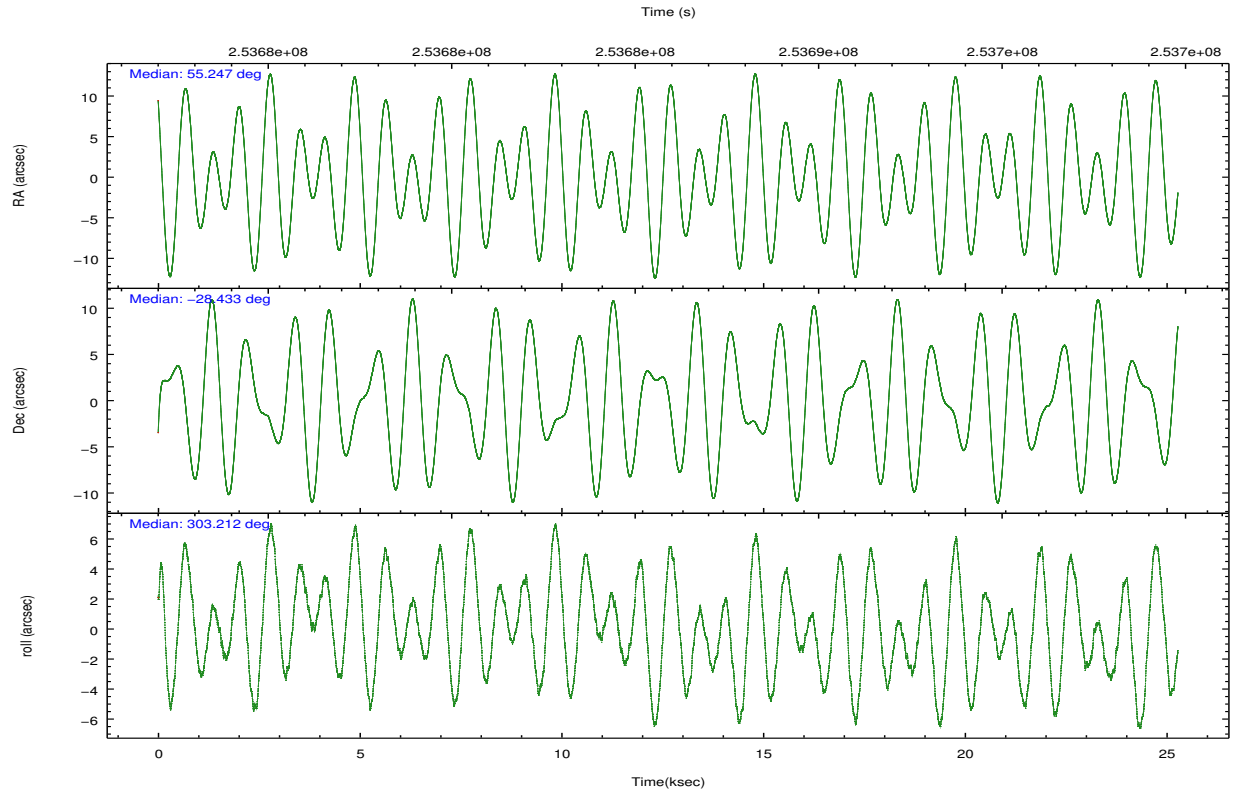
	ccd 0	ccd 1	ccd 2	ccd 3	ccd 6
grade 0 events	6393	7237	5787	6909	6072
	3%	4%	3%	3%	3%
grade 1 events	99	83	112	84	79
	0%	0%	0%	0%	0%
grade 2 events	4178	4212	3919	3663	3719
	2%	2%	2%	2%	2%
grade 3 events	2062	2170	1793	1970	2035
	1%	1%	0%	1%	1%
grade 4 events	1840	2066	1881	1885	1996
	1%	1%	1%	1%	1%
grade 5 events	5929	6670	5488	7085	6844
	3%	4%	3%	4%	3%
grade 6 events	3271	3932	3130	3233	3783
	1%	2%	1%	1%	2%
grade 7 events	140078	139550	160721	149685	147622
	85%	84%	87%	85%	85%

2.2 Compared Parameters

Parameter	Planned	Actual	Parameter	Planned	Actual
Instrument	ACIS	ACIS	Obspar format version number	7	7
Detector	ACIS-01236	ACIS-01236	Obspar file type	PREDICTED	ACTUAL
Grating	NONE	NONE	Obspar update status	NONE	UPDATED
Data mode	VFAINT	VFAINT	Number of optional ACIS chips dropped	0	0
Observation mode	POINTING	POINTING	On-chip summing requested	N	N
[deg] Pointing RA	55.219047	55.24689121440408	Subarray requested	NONE	NONE
[deg] Pointing Dec	-28.420369	-28.43262053684104	Alternating exposures requested	N	N
[deg] Pointing Roll	302.994058	303.2159950295423	[s] Primary exposure time	0.000000	3.1
[mm] SIM focus pos	-0.782348	-0.7809083437167272			
[mm] SIM defocus	0	0.001439871863259334			
[mm] SIM translation stage pos	-225.840463	-225.8433433320239			
[mm] SIM translation stage offset	-7.752	-7.749109670905796			
[s] Observation start time (MET)	253673534.184000	253672561.4471			
Observation start date	2006-01-15T00:51:09	2006-01-15T00:36:01			
[s] Observation end time (MET)	253698534.184000	253699204.27334			
Observation end date	2006-01-15T07:47:49	2006-01-15T08:00:04			
Read mode	TIMED	TIMED			

2.3 Aspect





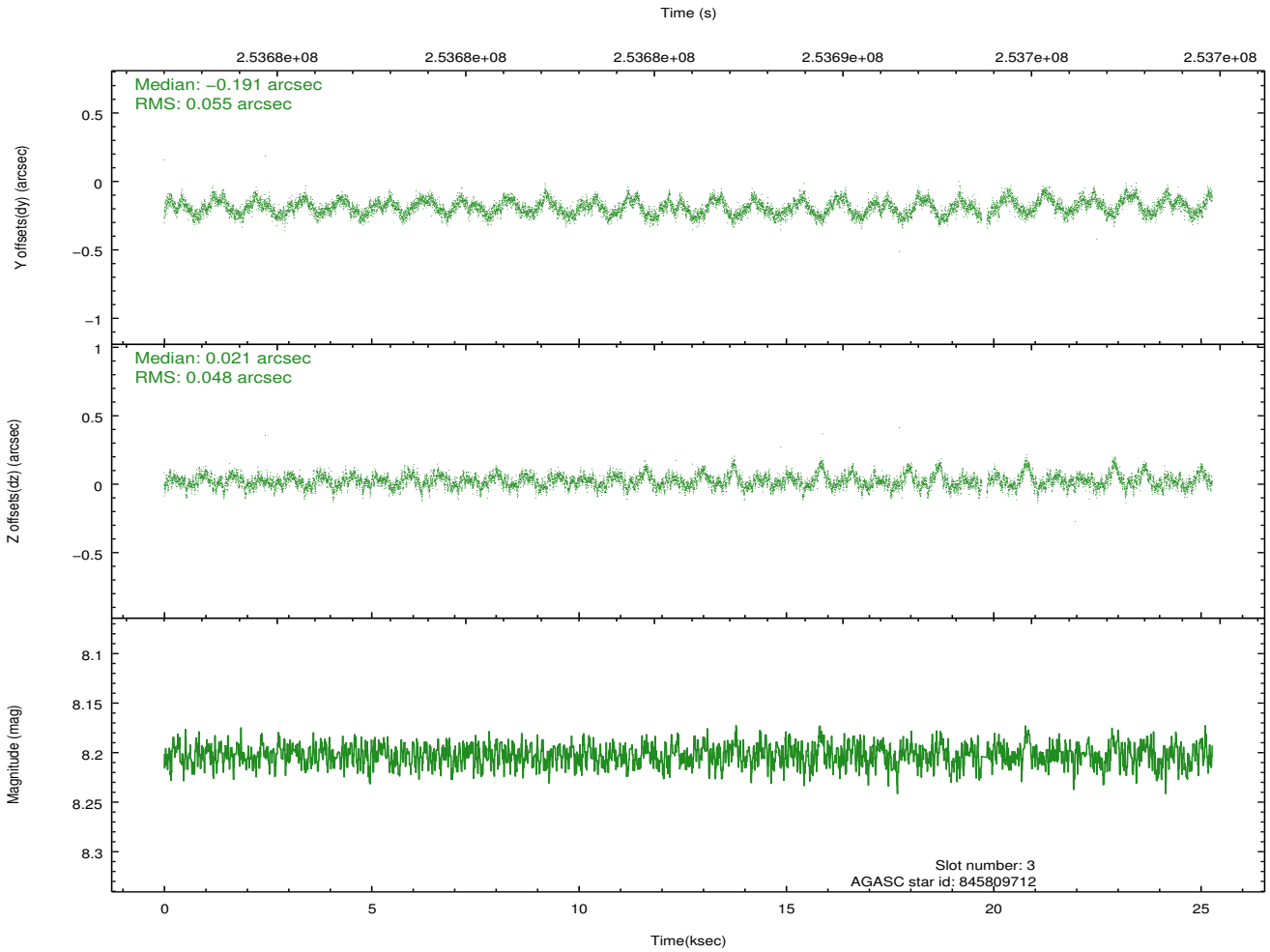
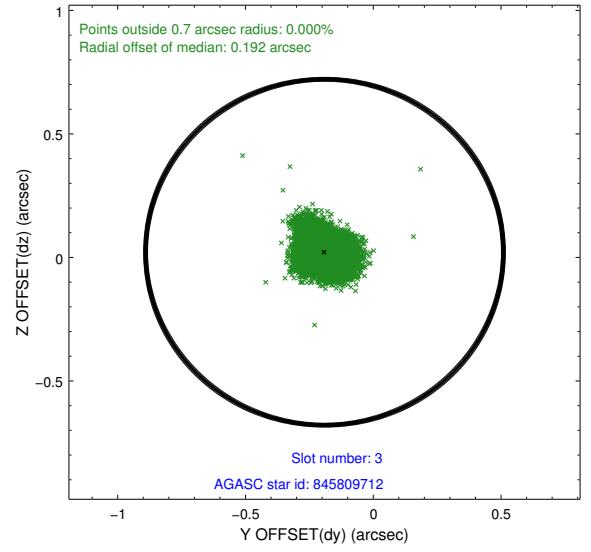
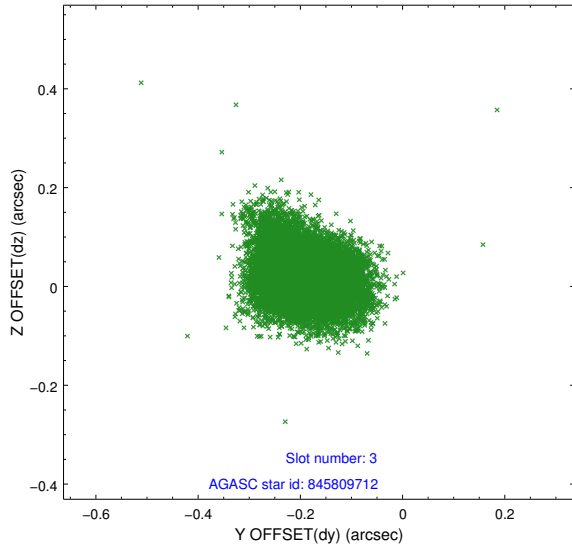
Slot Statistics

slot	status	id	mag	n_pts	med_dy	med_dz	dr1	dr2	ra	dec	mean_y	mean_z
0	FID	ACIS-I-1	7.23	6166	0.115	-0.111	0.009	0.022	0.000000	0.000000	933.87	-993.04
1	FID	ACIS-I-5	7.22	6166	-0.258	0.092	0.011	0.036	0.000000	0.000000	-1814.52	904.60
2	FID	ACIS-I-6	7.25	6164	0.051	0.089	0.010	0.021	0.000000	0.000000	399.25	1549.21
3	GUIDE	845809712	8.20	12269	-0.191	0.021	0.077	0.125	54.765639	-28.019852	-1991.36	-424.62
4	GUIDE	845812240	7.11	12330	0.004	-0.112	0.058	0.095	54.972671	-28.511492	-147.77	-833.23
5	GUIDE	845812904	8.93	12318	0.091	0.107	0.066	0.109	55.417167	-28.833728	1589.32	-286.21
6	GUIDE	845812912	8.04	12327	0.014	-0.056	0.066	0.109	54.885871	-29.102274	1490.35	-2216.68
7	GUIDE	845940392	7.54	12329	0.073	0.037	0.055	0.085	55.991231	-28.628645	1964.74	1634.11

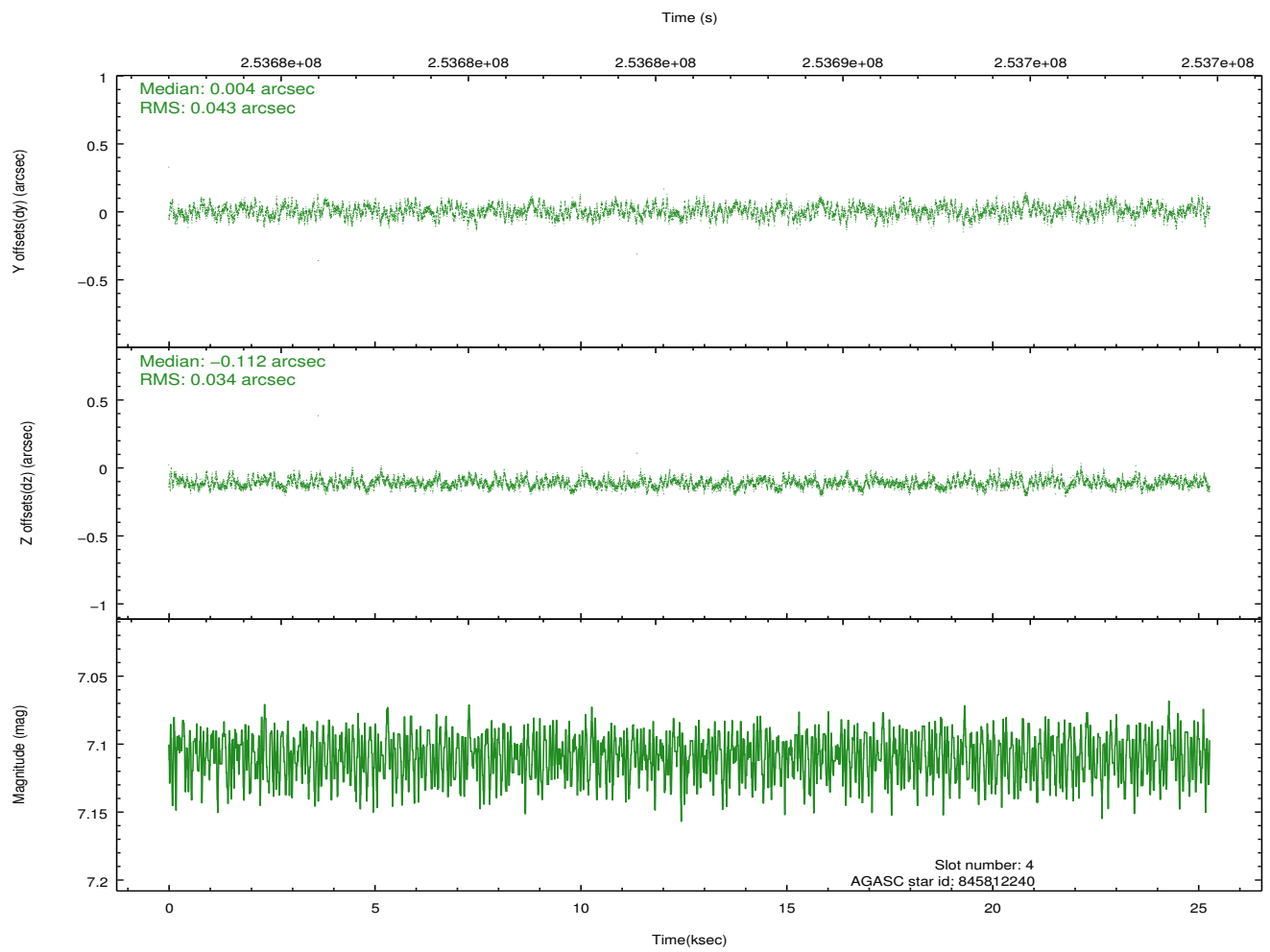
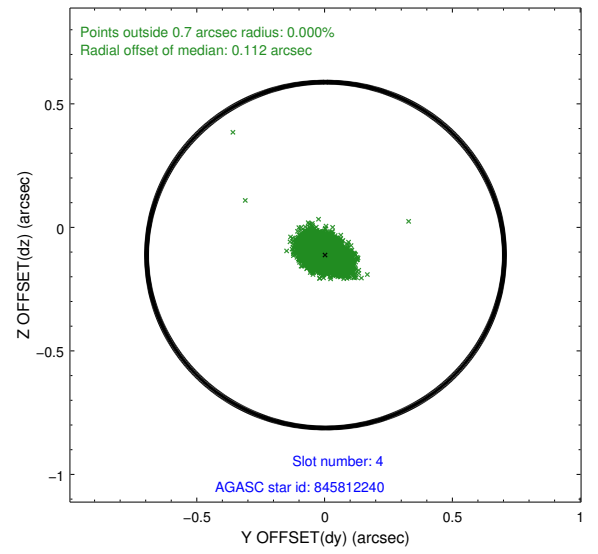
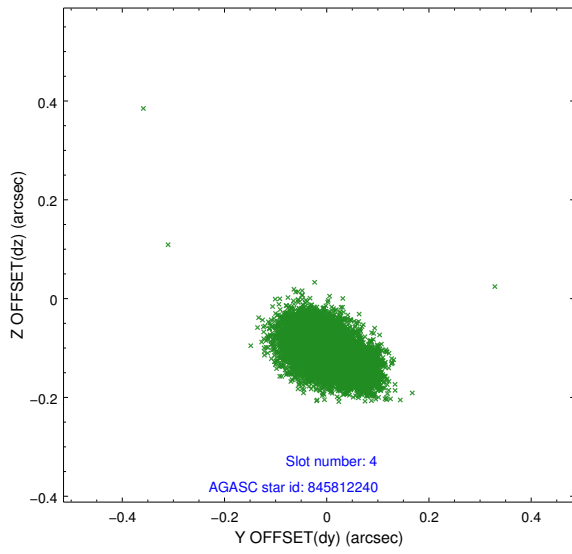
∞

2.4 Star Slots

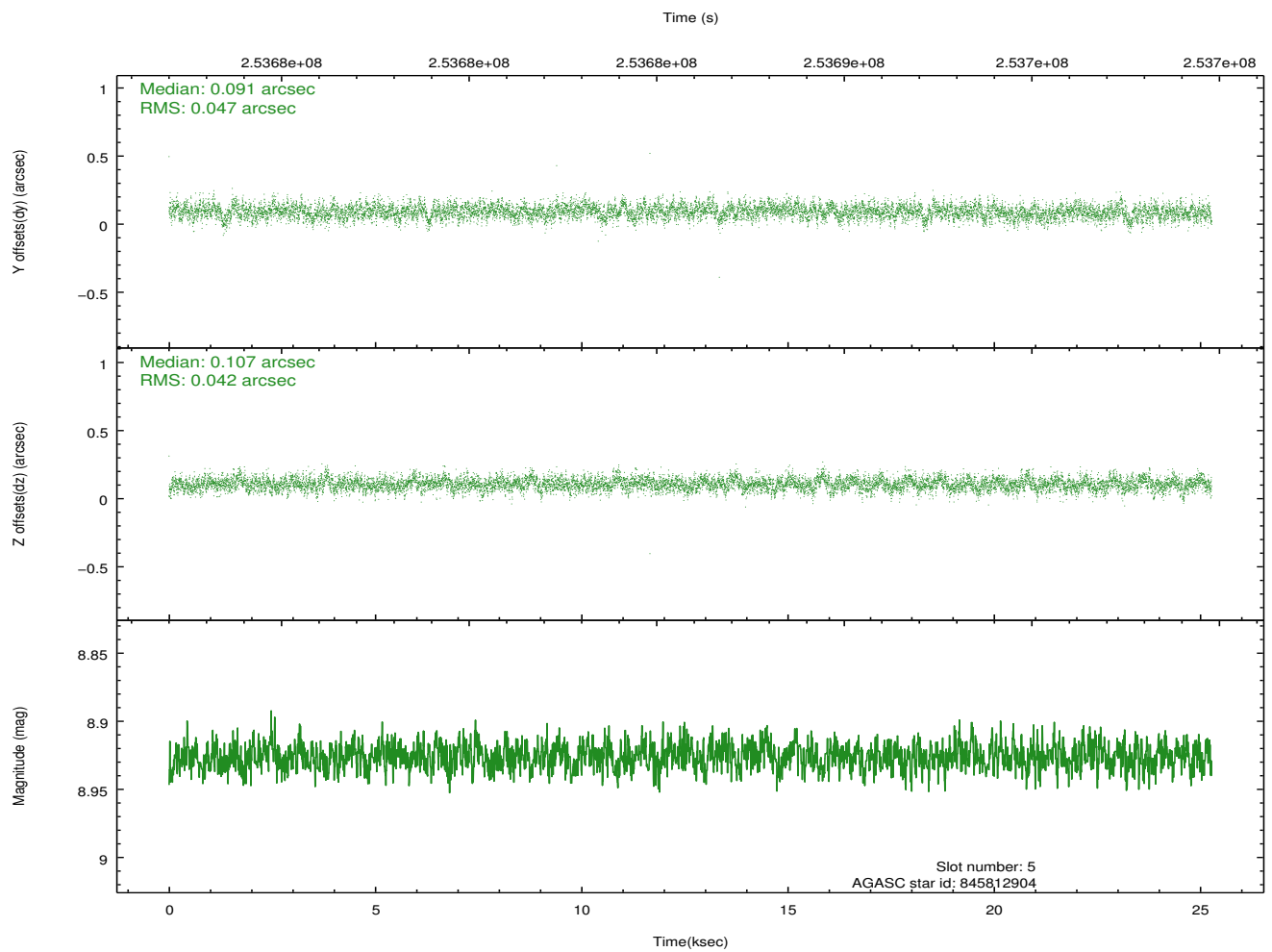
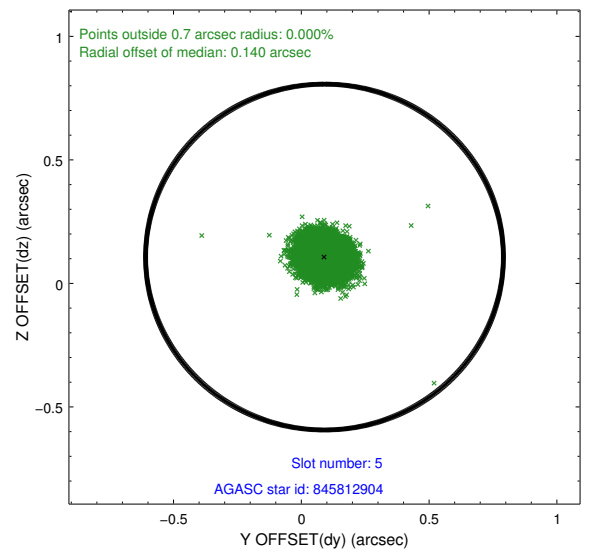
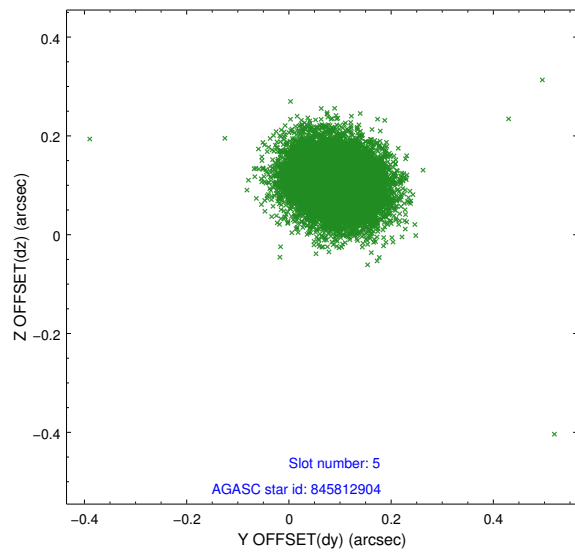
2.4.1 Slot 3



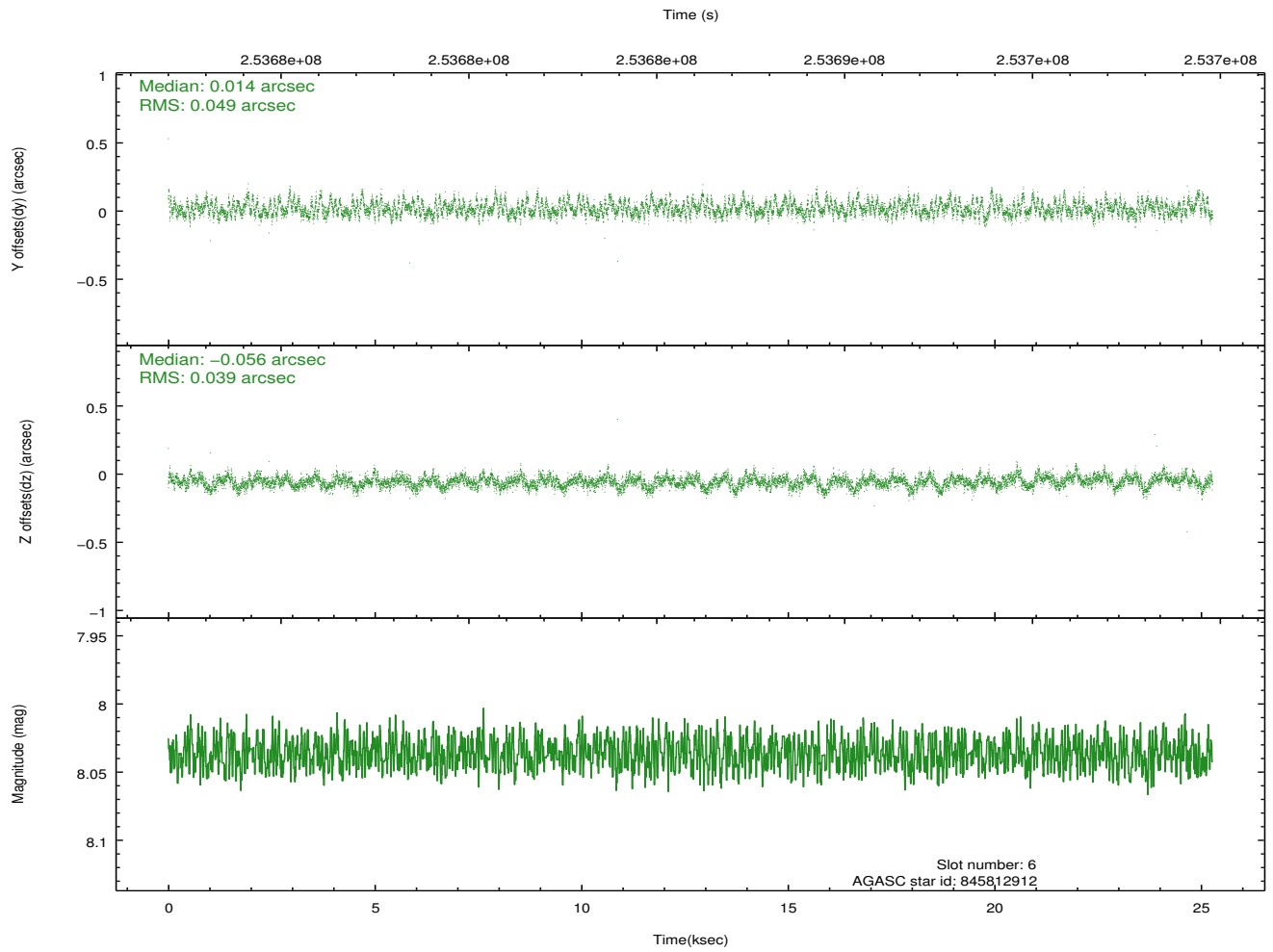
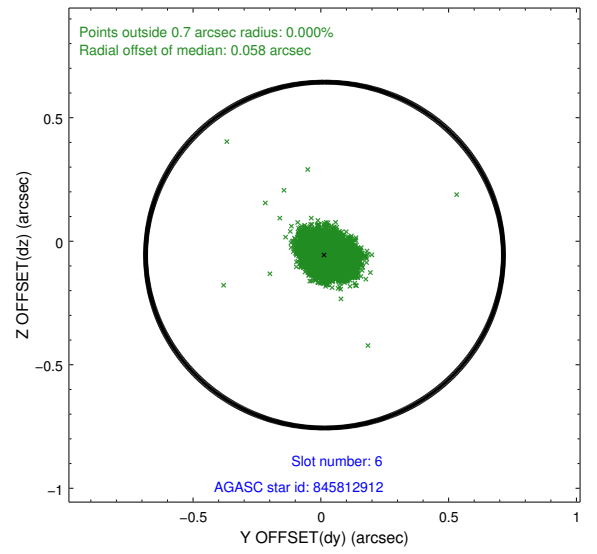
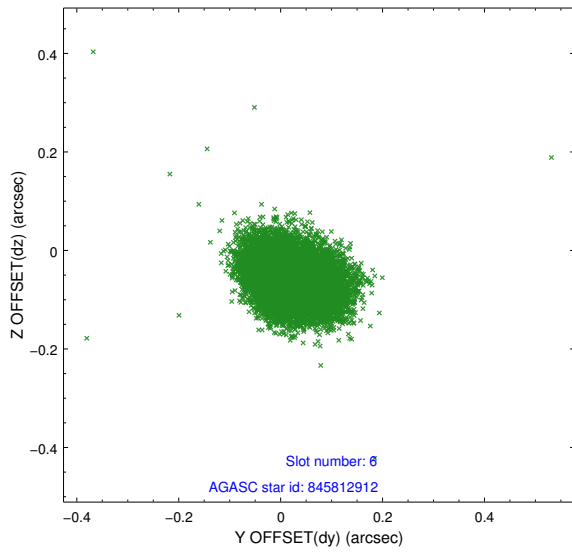
2.4.2 Slot 4



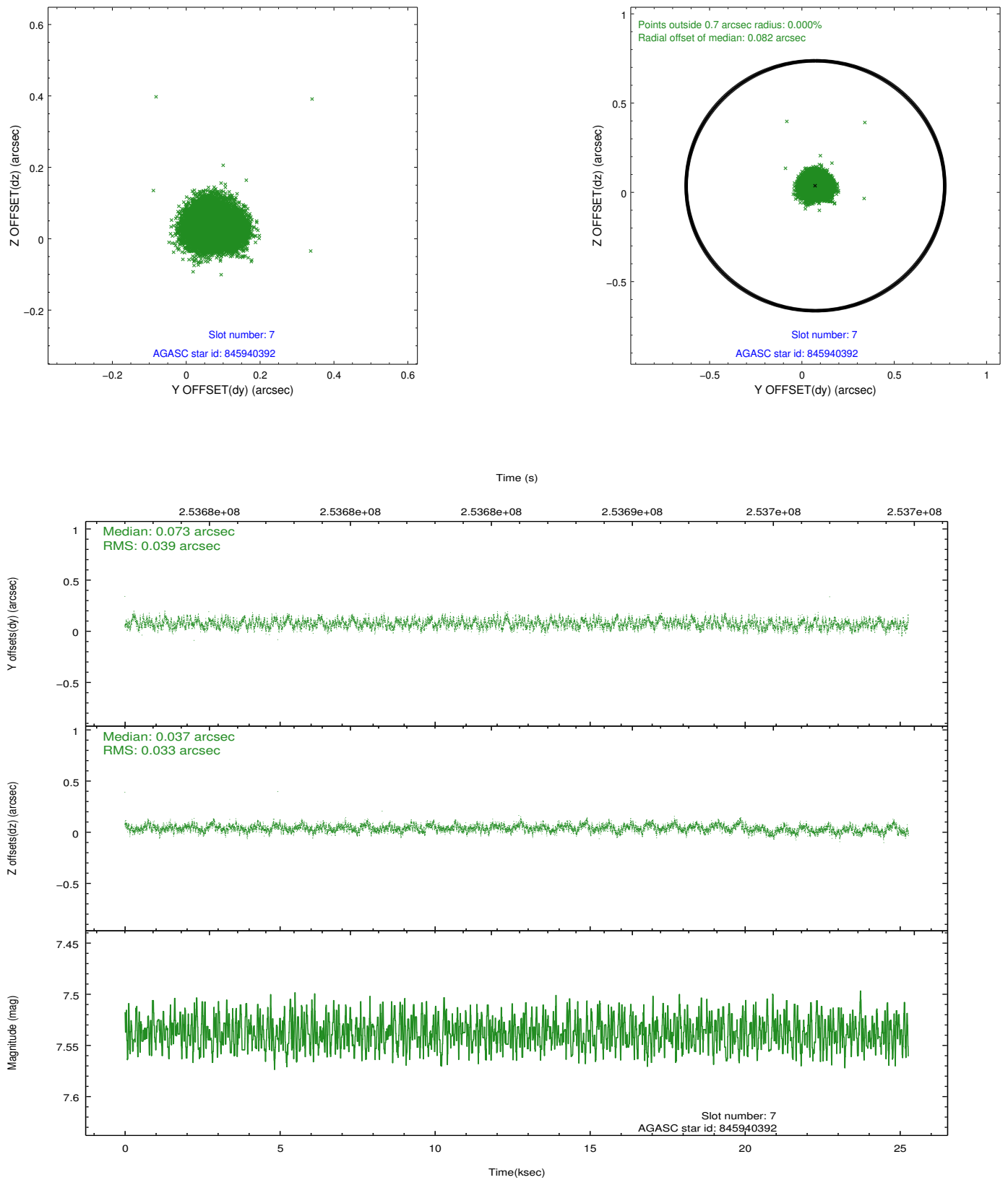
2.4.3 Slot 5



2.4.4 Slot 6

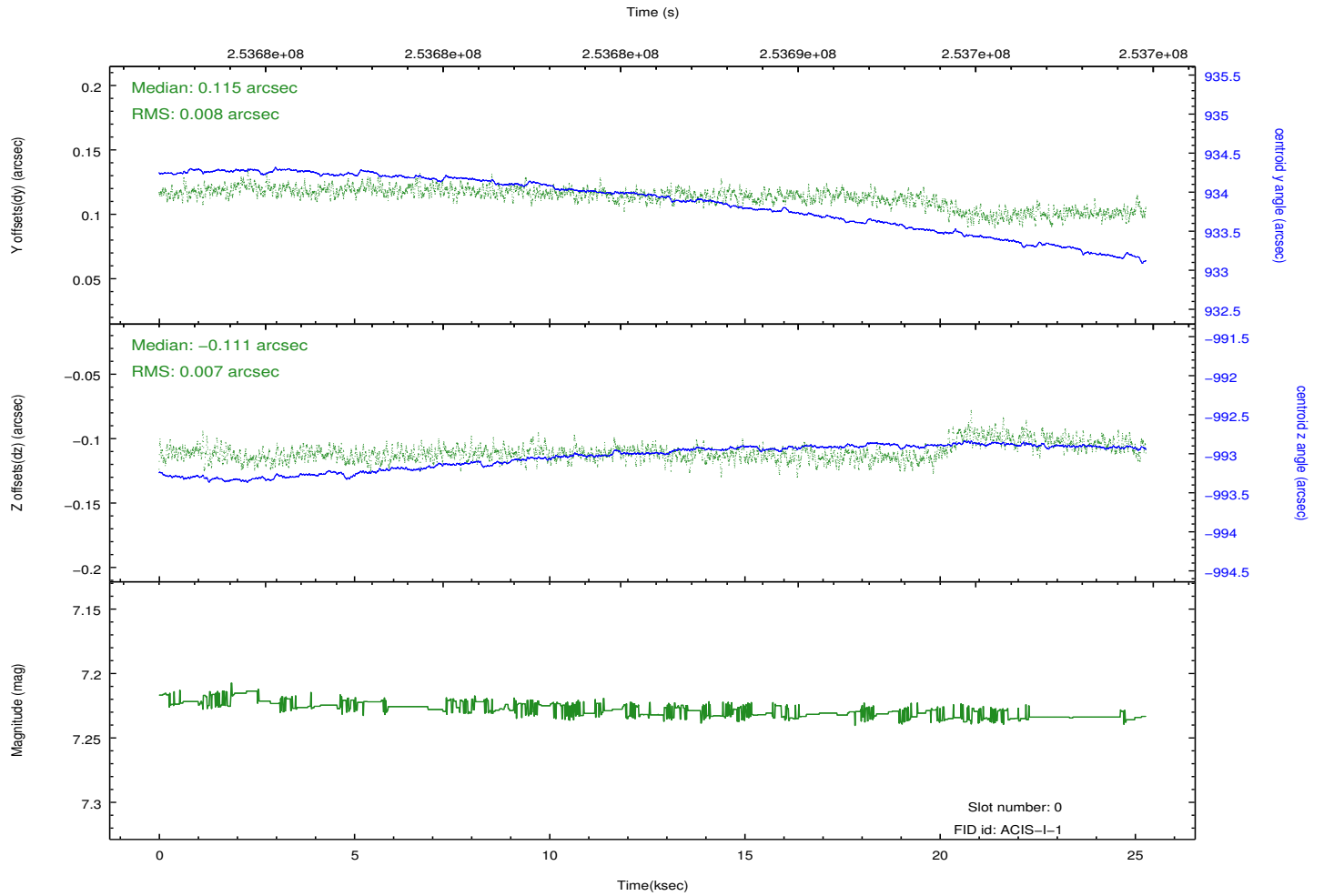
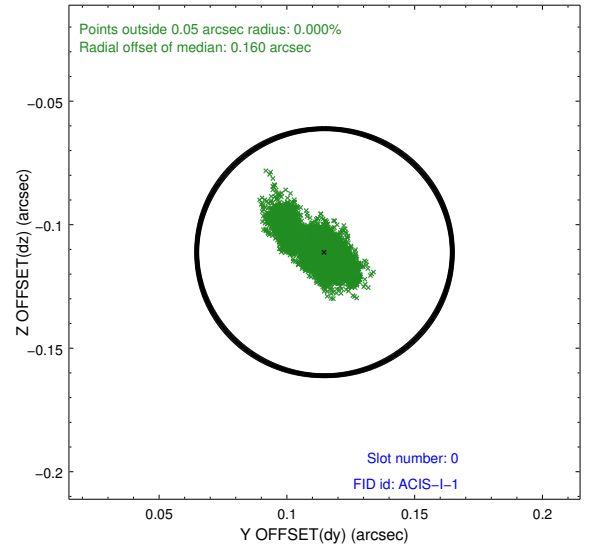
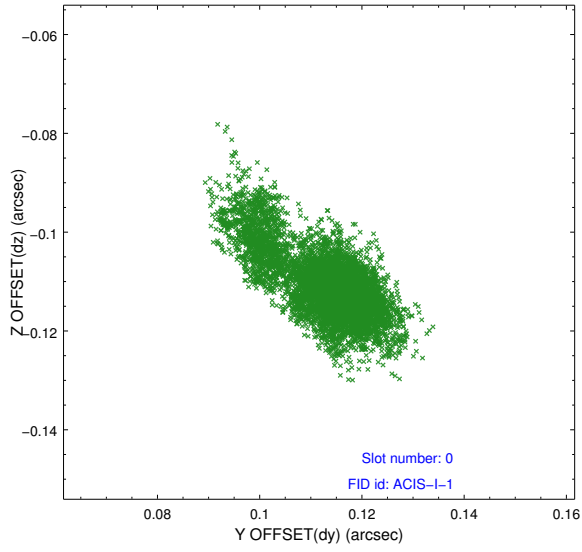


2.4.5 Slot 7

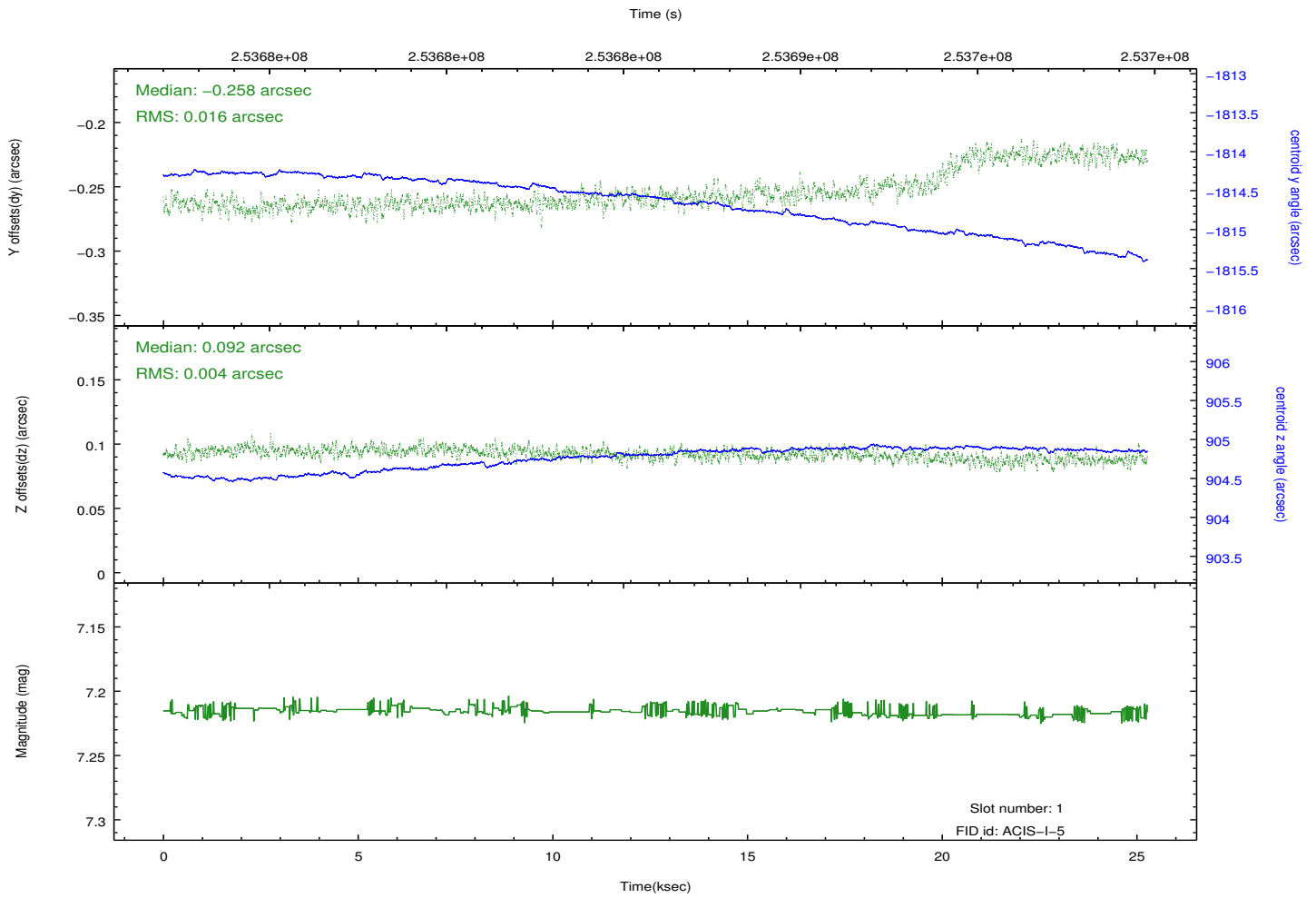
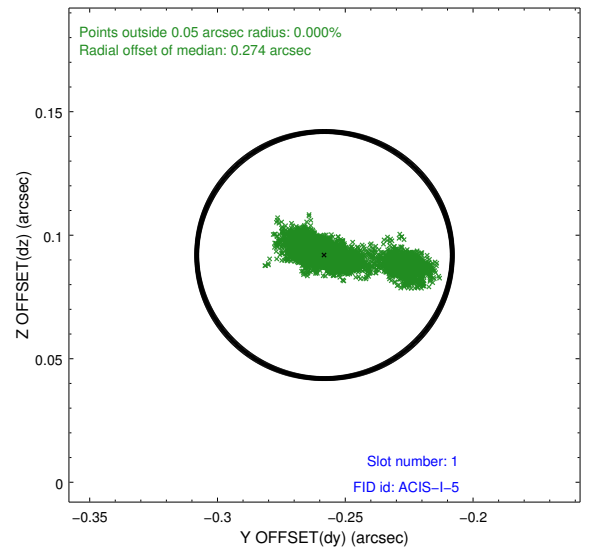
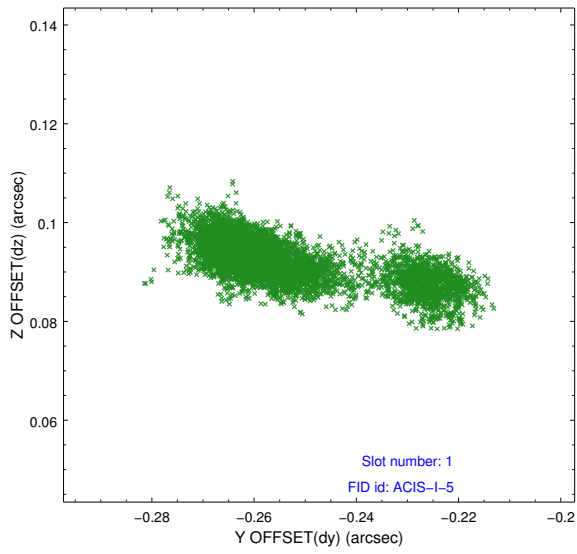


2.5 FID Slots

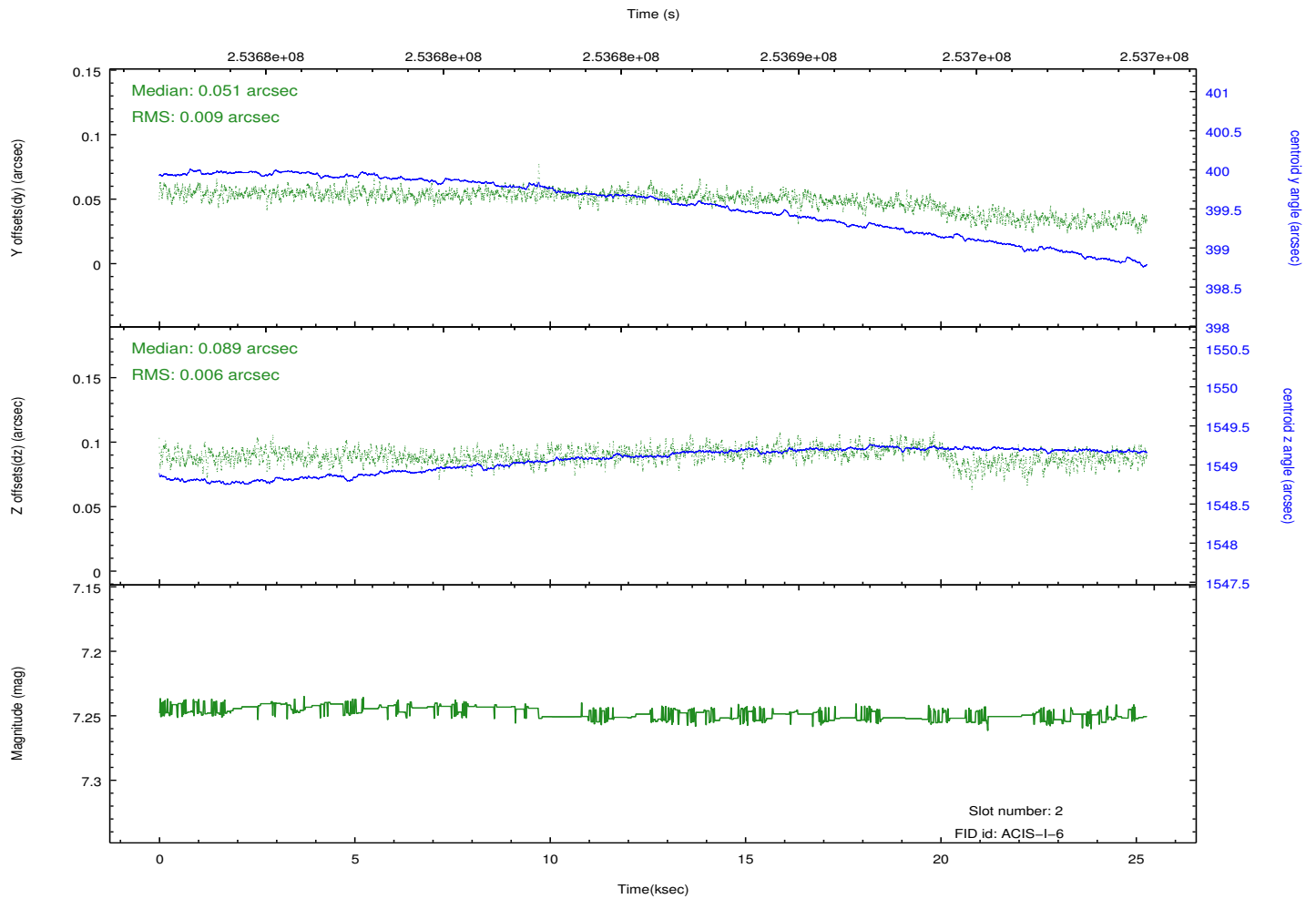
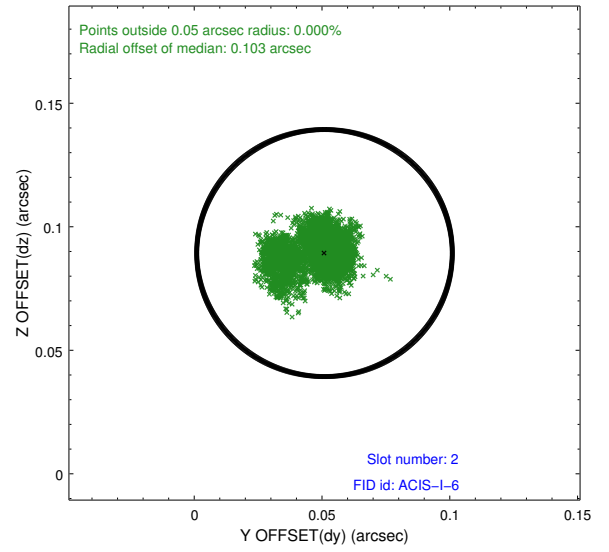
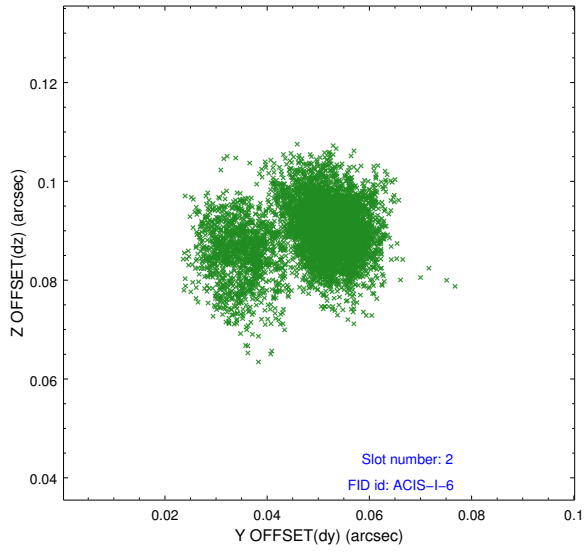
2.5.1 Slot 0



2.5.2 Slot 1



2.5.3 Slot 2



A Summary

A.1 Status

V&V Scientist	Jen Lauer
V&V Date (YYYY-MM-DD)	2012.03.23
V&V Edition	1
V&V Disposition and Status	OK
V&V Charge Time	25.0510999

A.2 Comments