

V&V Reference Report

L2 ASCDS Version : 8.5.1.1

Observation 5800 - L2 Version 3
Chandra X-Ray Center

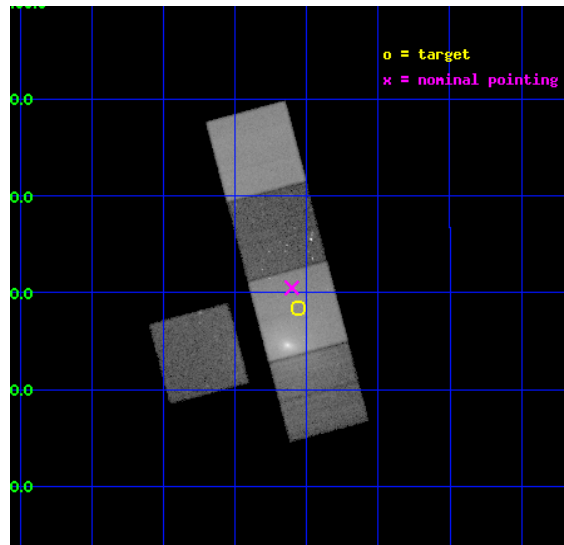
L2 Processing Date : Dec 30 2012

Contents

1	Front	2
2	OBI	3
2.1	OBI	3
2.1.1	Images	3
2.1.2	Bias	3
2.1.3	Parameters	4
2.1.4	Events	4
2.2	Compared Parameters	5
2.3	Aspect	6
2.4	Star Slots	9
2.4.1	Slot 3	9
2.4.2	Slot 4	10
2.4.3	Slot 5	11
2.4.4	Slot 6	12
2.4.5	Slot 7	13
2.5	FID Slots	14
2.5.1	Slot 0	14
2.5.2	Slot 1	15
2.5.3	Slot 2	16
A	Summary	17
A.1	Status	17
A.2	Comments	17

1 Front

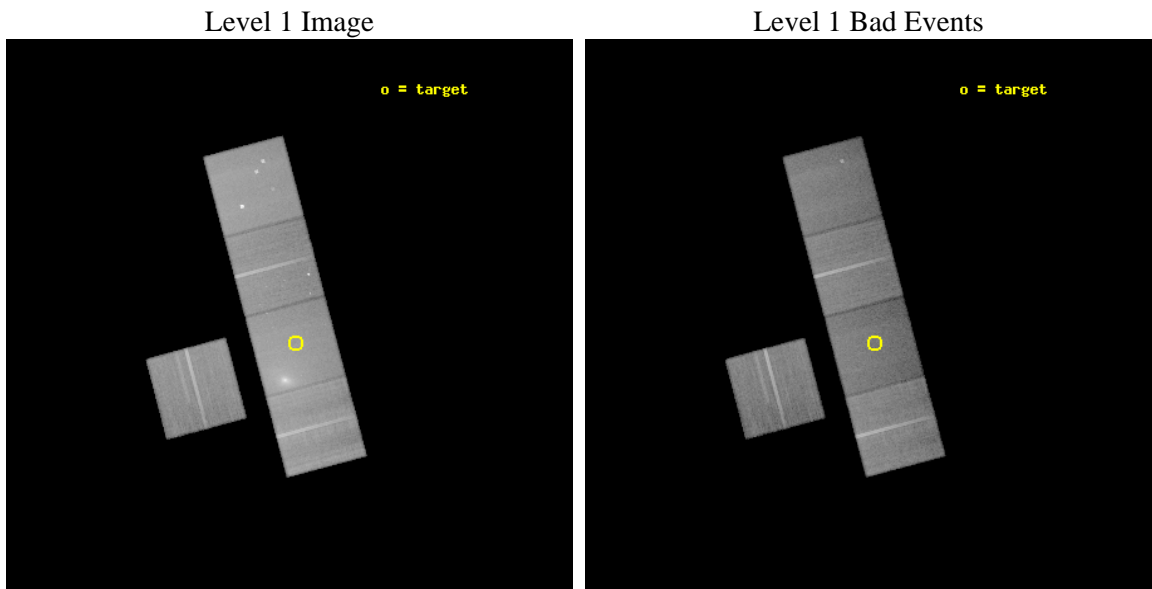
seq_num	800513	Sequence number
obs_id	5800	Observation id
title	Intracluster Gas Velocity Tomography in RXJ0419.6+0225	Proposal ti
observer	Dr renato dupke	Principal investigator
object	RXJ0419.6+0225(OFF1)	Source name
dtcycle	0	
cycle	P	events from which exps? Prim/Second/Both
ra_targ	64.889583	Observer's specified target RA [deg]
dec_targ	2.472889	Observer's specified target Dec [deg]
ra_nom	64.900882145518	Nominal RA [deg]
dec_nom	2.5085568042804	Nominal Dec [deg]
roll_nom	75.138787152663	Nominal Roll [deg]
revision	3	Processing version of data
ontime	45132.899913192	Sum of GTIs [s]
livetime	44543.205349468	Livetime [s]
ontime3	45123.476912498	Sum of GTIs [s]
ontime5	45132.899913192	Sum of GTIs [s]
ontime6	45126.617912769	Sum of GTIs [s]
ontime7	45132.899913192	Sum of GTIs [s]
ontime8	45129.758922905	Sum of GTIs [s]
l2events	560407	Number of level 2 events



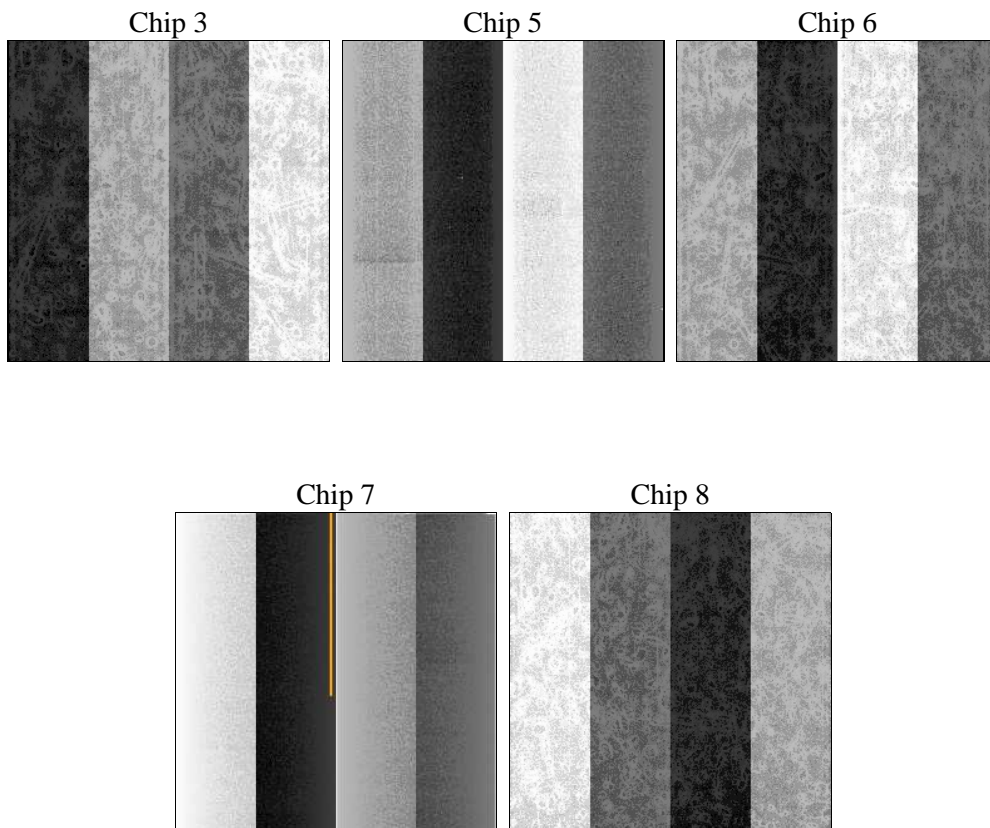
2 OBI

2.1 OBI

2.1.1 Images



2.1.2 Bias



2.1.3 Parameters

obi_num	0	Obi number	sched_exp_time	45000.000000	[s] Scheduled observation exposure time
ascdsver	8.5.1.1	Processing system revision	ontime	45132.899913192	Sum of GTIs [s]
caldbver	4.5.5	 	ontime3	45123.476912498	Sum of GTIs [s]
date	2012-12-31T00:10:53	Date and time of file creation	ontime5	45132.899913192	Sum of GTIs [s]
revision	3	Processing version of data	ontime6	45126.617912769	Sum of GTIs [s]
			ontime7	45132.899913192	Sum of GTIs [s]
			ontime8	45129.758922905	Sum of GTIs [s]
			l1events	1918262	Number of level 1 events

2.1.4 Events

	ccd 3	ccd 5	ccd 6	ccd 7	ccd 8
level 1 events	302044	432311	319627	448979	415301
rejected events	266389	220983	278265	195925	302995
rejected %	88%	51%	87%	43%	72%

	ccd 3	ccd 5	ccd 6	ccd 7	ccd 8
grade 0 events	16913	29641	19901	47292	48824
	5%	6%	6%	10%	11%
grade 1 events	190	389	203	318	374
	0%	0%	0%	0%	0%
grade 2 events	6828	62625	8161	58925	22654
	2%	14%	2%	13%	5%
grade 3 events	3518	9694	3915	27027	10303
	1%	2%	1%	6%	2%
grade 4 events	3484	9148	3722	26802	9554
	1%	2%	1%	5%	2%
grade 5 events	12020	35086	12728	37209	18018
	3%	8%	3%	8%	4%
grade 6 events	5982	108066	6928	99011	24482
	1%	24%	2%	22%	5%
grade 7 events	253109	177662	264069	152395	281092
	83%	41%	82%	33%	67%

2.2 Compared Parameters

Parameter	Planned	Actual	Parameter	Planned	Actual
Instrument	ACIS	ACIS	Obspar format version number	7	7
Detector	ACIS-35678	ACIS-35678	Obspar file type	PREDICTED	ACTUAL
Grating	NONE	NONE	Obspar update status	NONE	UPDATED
Data mode	VFAINT	VFAINT	Number of optional ACIS chips dropped	0	0
Observation mode	POINTING	POINTING	On-chip summing requested	N	N
[deg] Pointing RA	64.908360	64.90088214551764	Subarray requested	NONE	NONE
[deg] Pointing Dec	2.482352	2.508556804280419	Alternating exposures requested	N	N
[deg] Pointing Roll	74.981827	75.13878715266253	[s] Primary exposure time	0.000000	3.1
[mm] SIM focus pos	-0.684267	-0.6828225247311905			
[mm] SIM defocus	0	0.001444936568705701			
[mm] SIM translation stage pos	-190.132523	-190.1400660498719			
[mm] SIM translation stage offset	0	0.00754346686406393			
[s] Observation start time (MET)	246382673.184000	246380718.28503			
Observation start date	2005-10-22T15:36:49	2005-10-22T15:05:18			
[s] Observation end time (MET)	246427673.184000	246428839.98725			
Observation end date	2005-10-23T04:06:49	2005-10-23T04:27:19			
Read mode	TIMED	TIMED			

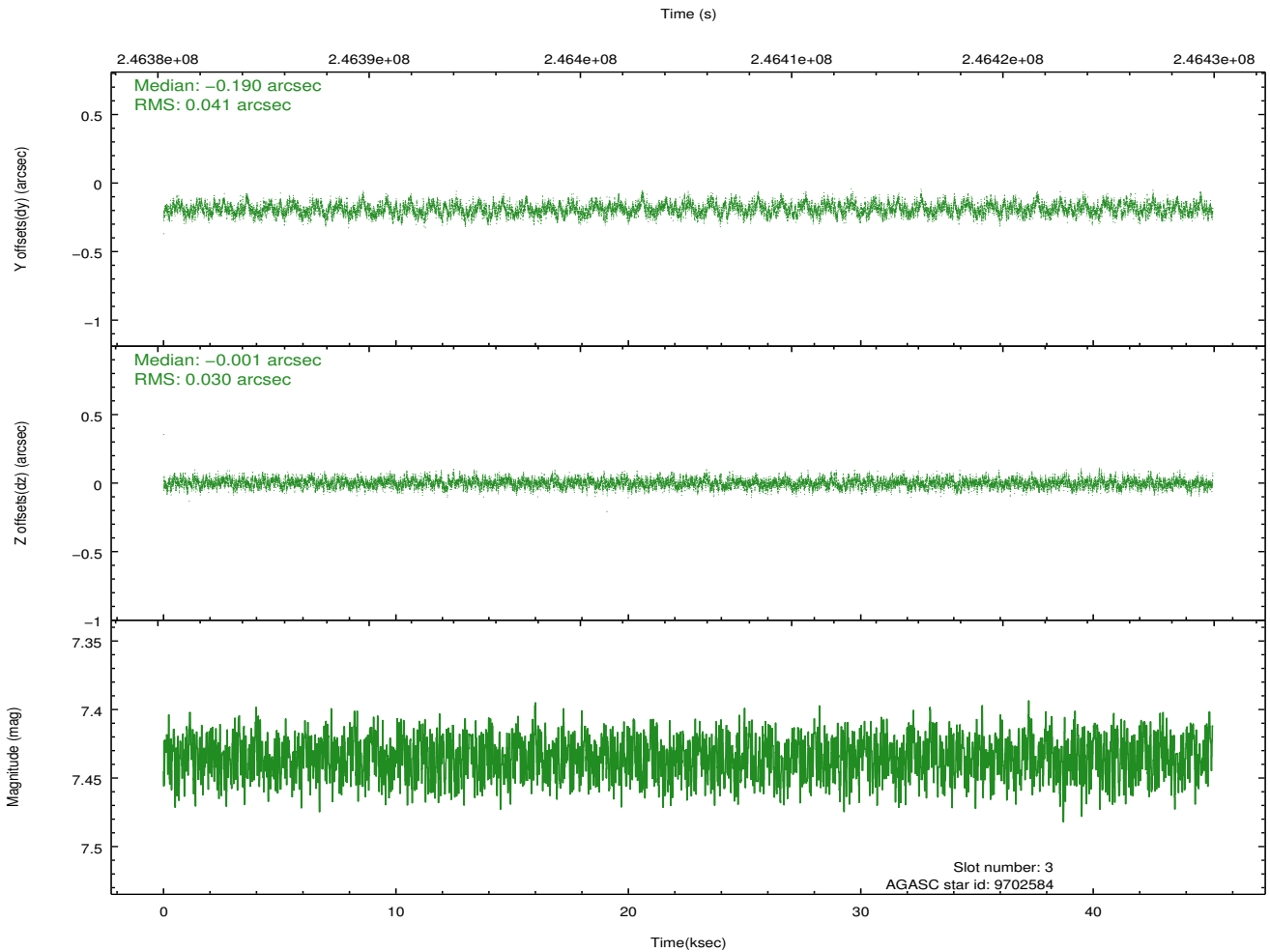
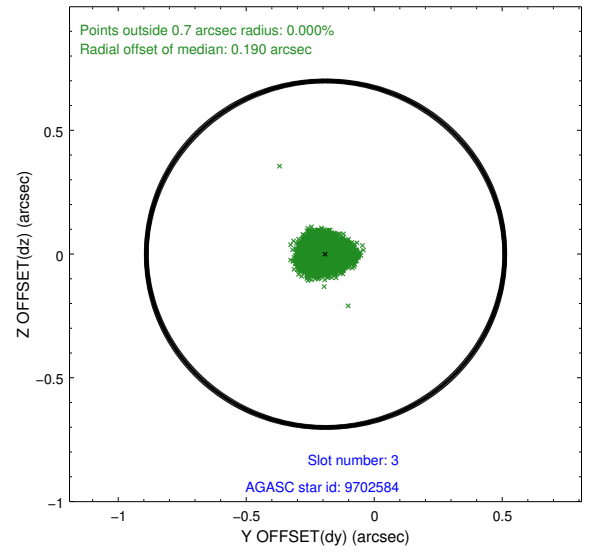
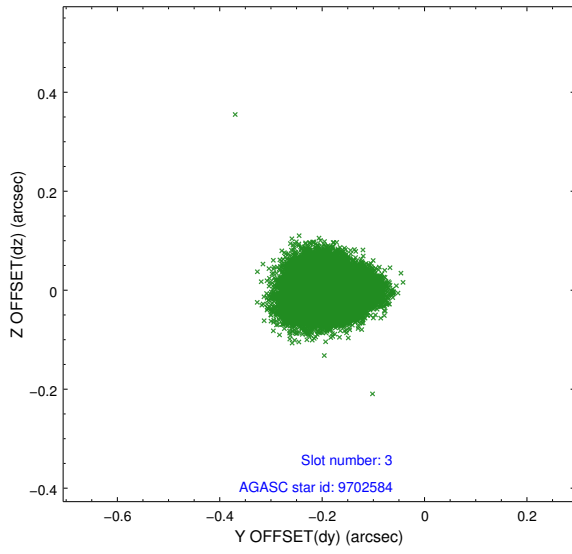
2.3 Aspect

Slot Statistics

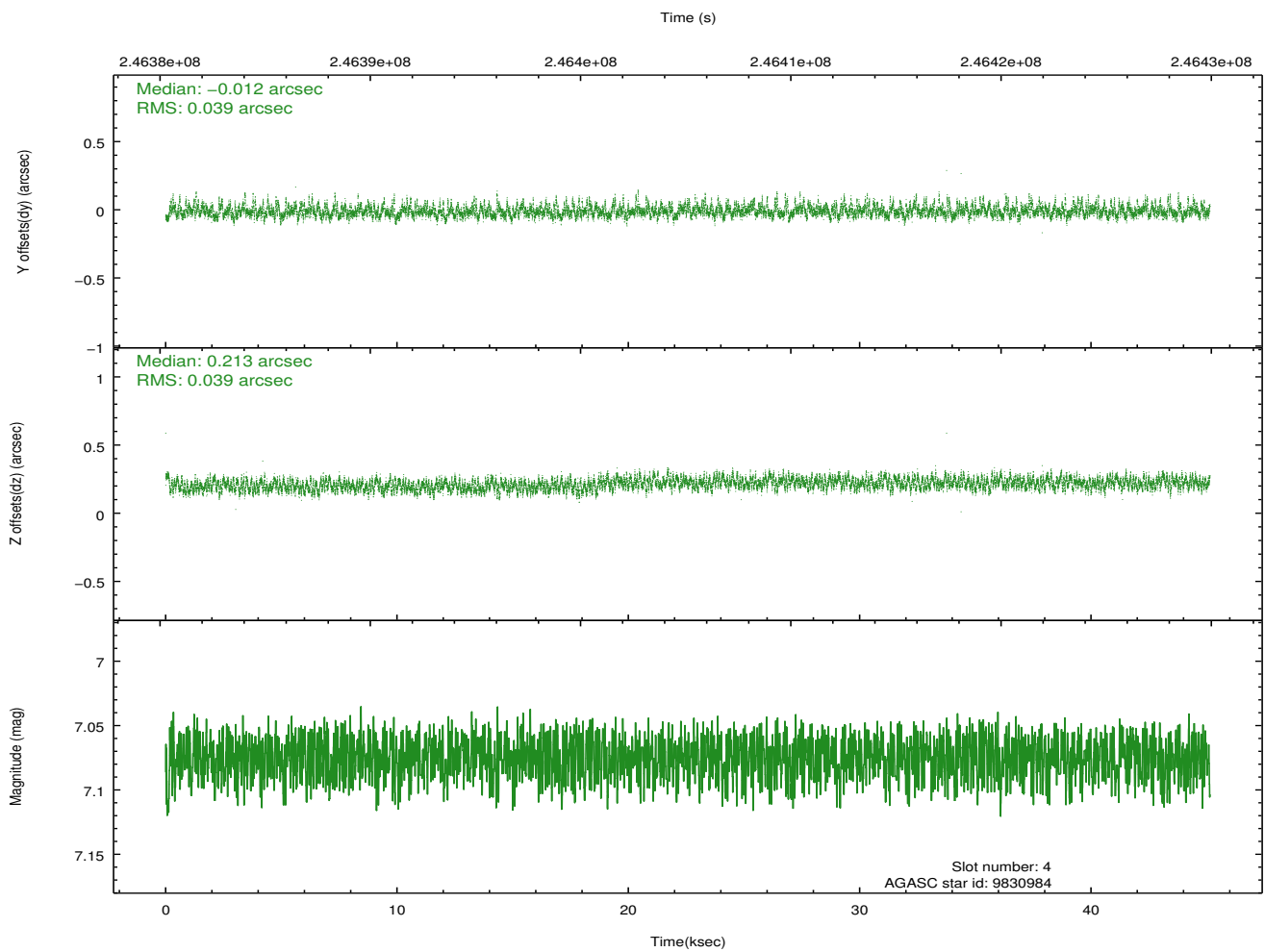
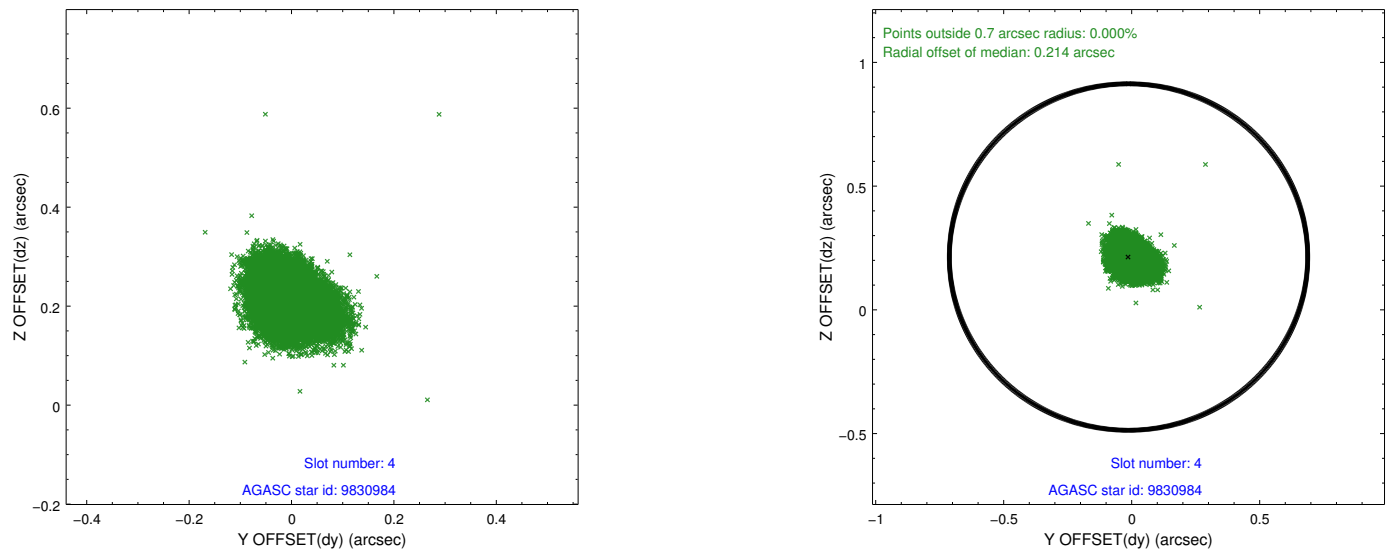
slot	status	id	mag	n_pts	med_dy	med_dz	dr1	dr2	ra	dec	mean_y	mean_z
0	FID	ACIS-S-2	7.11	11009	-0.049	-0.024	0.010	0.022	0.000000	0.000000	-760.24	-1731.91
1	FID	ACIS-S-4	7.21	11008	0.102	0.030	0.010	0.017	0.000000	0.000000	2153.15	176.70
2	FID	ACIS-S-5	7.23	11009	-0.084	0.002	0.009	0.020	0.000000	0.000000	-1813.16	170.25
3	GUIDE	9702584	7.43	22017	-0.190	-0.001	0.055	0.087	64.640935	2.470534	-290.44	917.90
4	GUIDE	9830984	7.07	22020	-0.012	0.213	0.058	0.094	65.442956	2.390106	177.52	-1943.24
5	GUIDE	10092712	7.08	22019	0.110	-0.198	0.058	0.096	64.322459	2.529688	-381.15	2079.16
6	GUIDE	10093656	8.29	22014	0.124	-0.033	0.057	0.091	64.910383	2.992173	1774.68	468.64
7	GUIDE	10094304	8.20	22013	-0.037	0.011	0.052	0.086	64.684037	3.149047	2109.17	1400.70

2.4 Star Slots

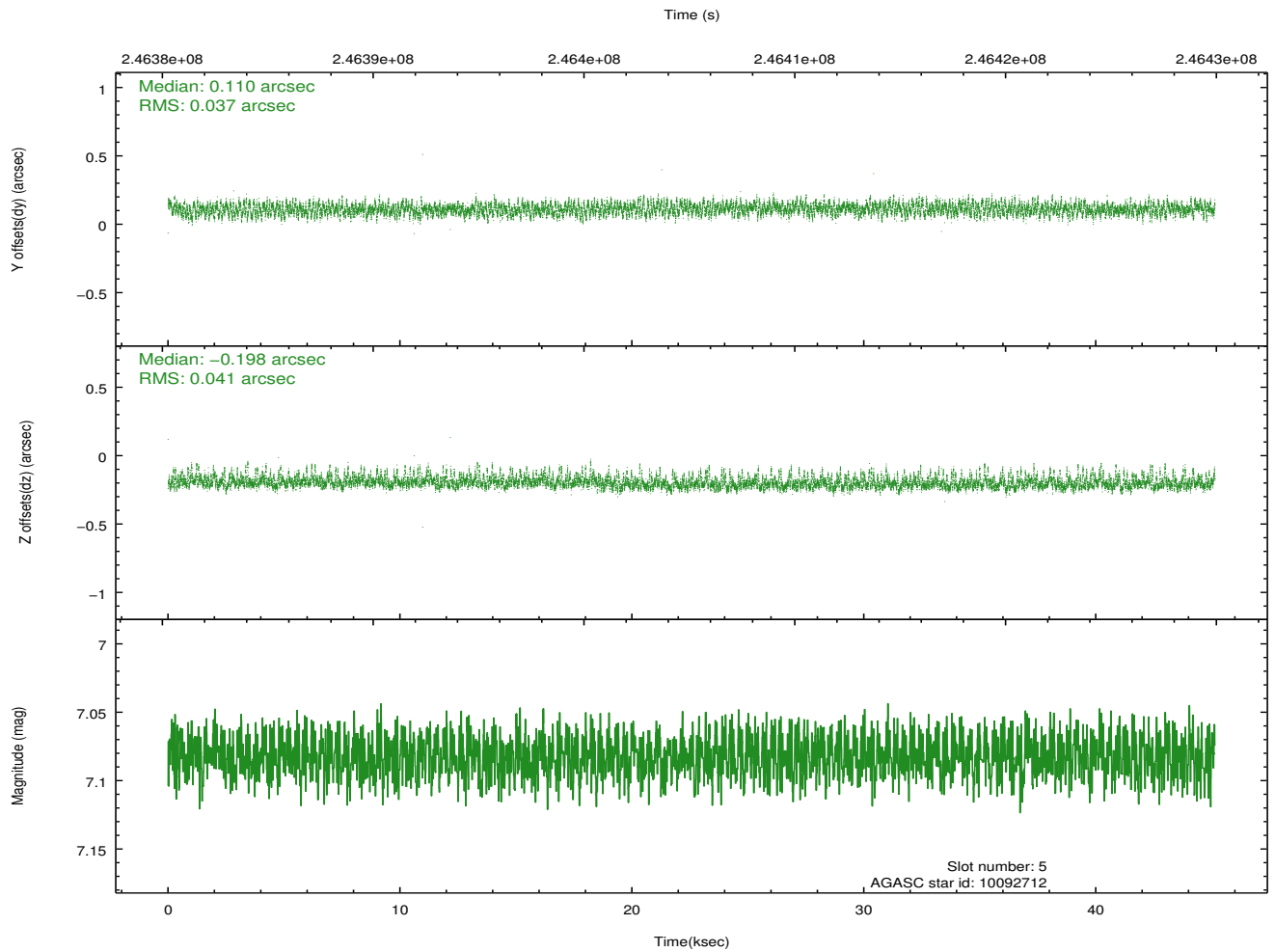
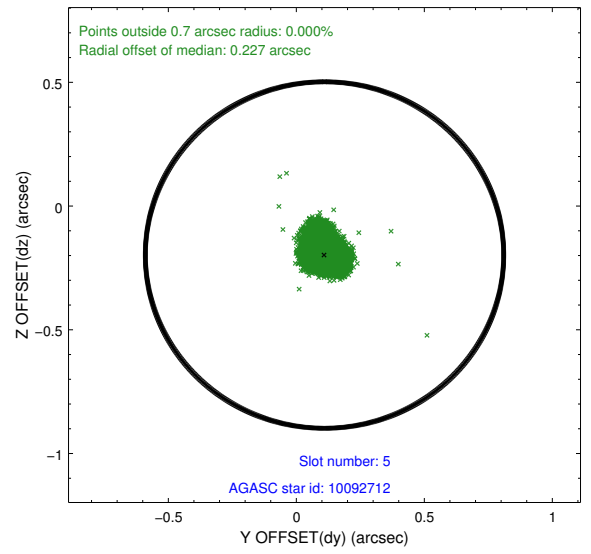
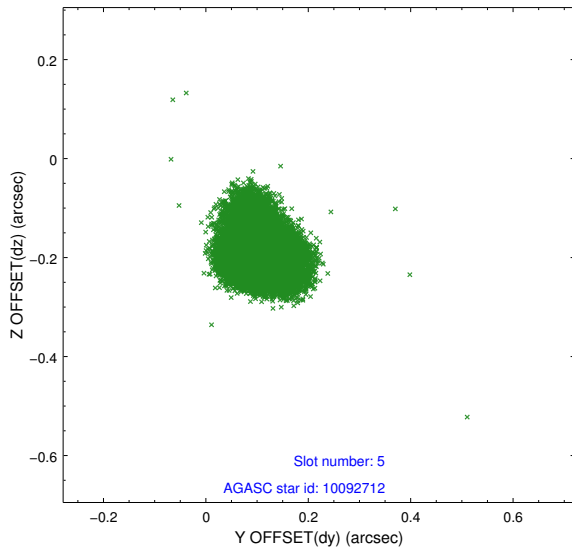
2.4.1 Slot 3



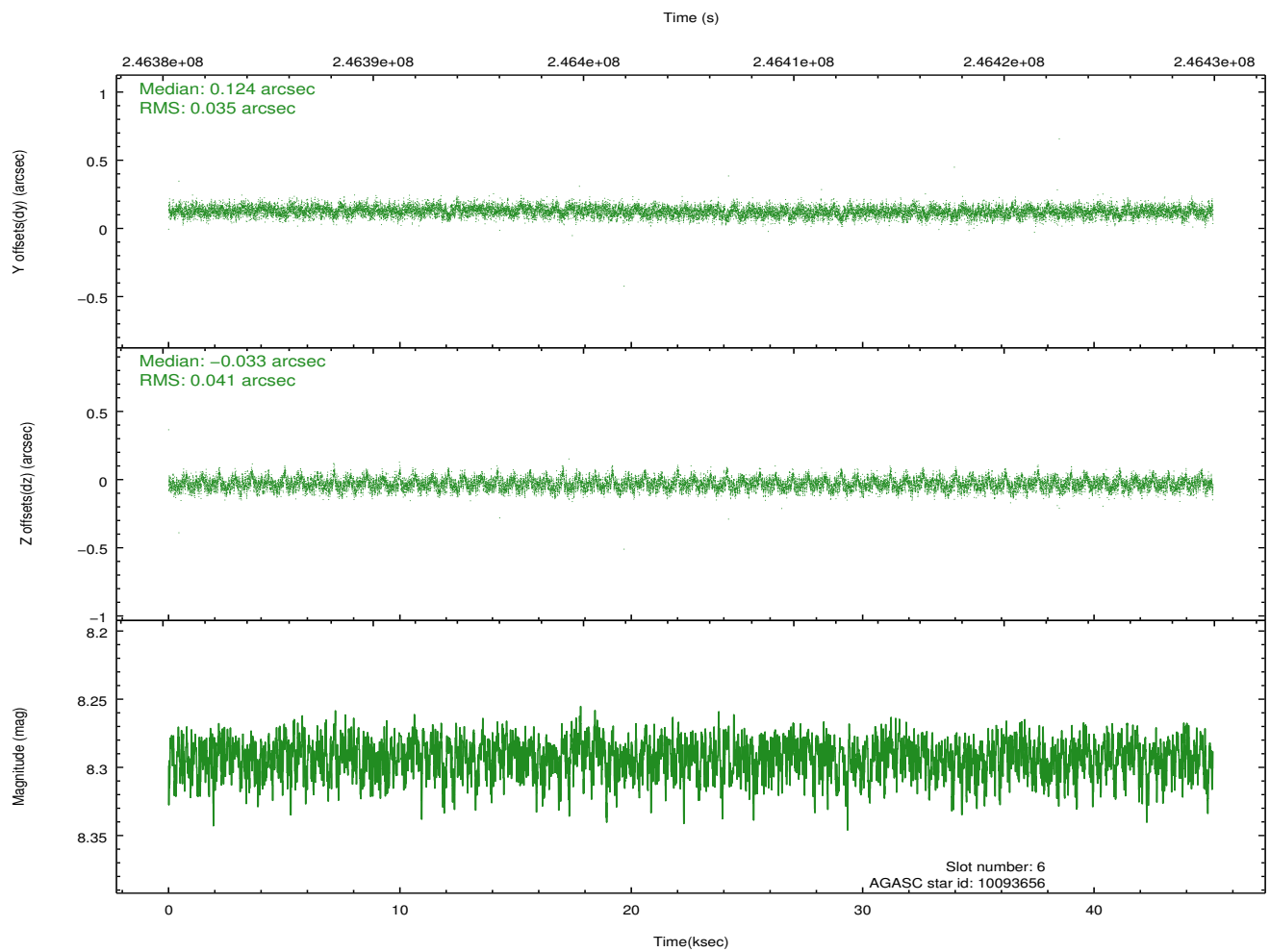
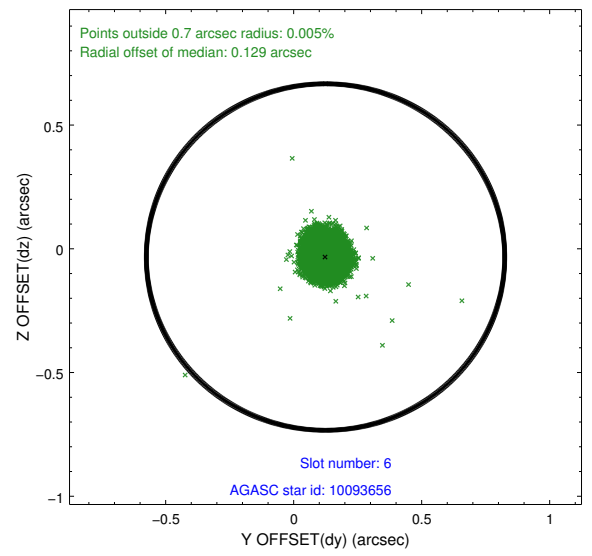
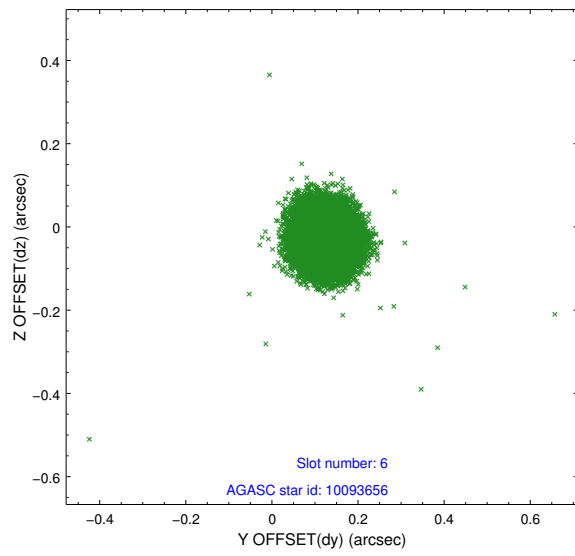
2.4.2 Slot 4



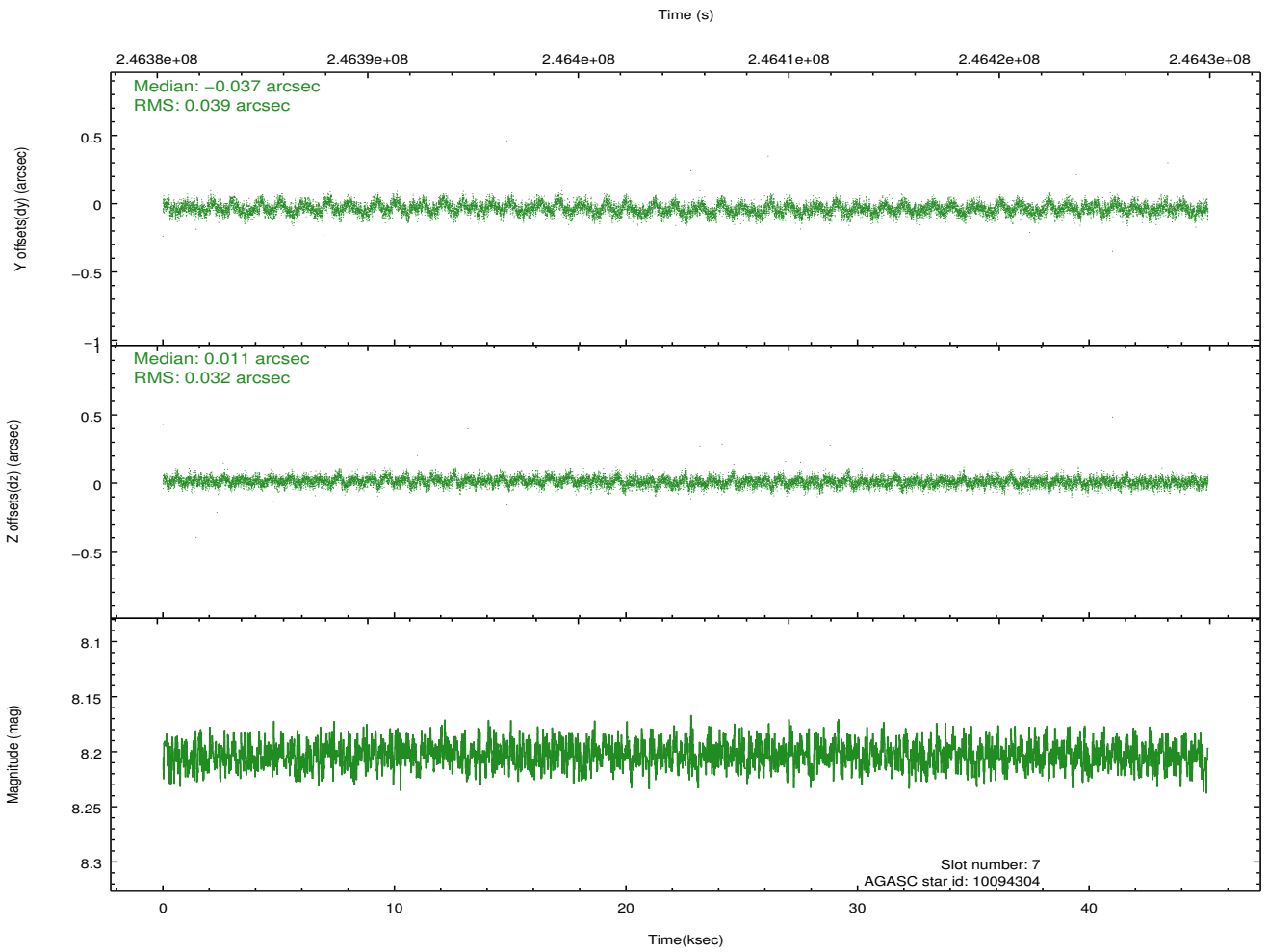
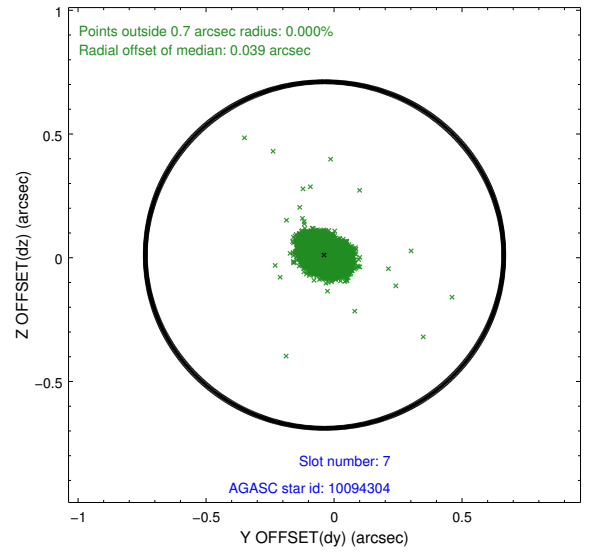
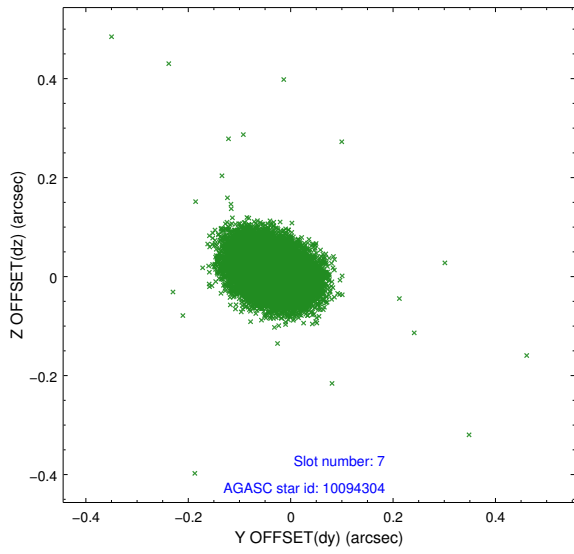
2.4.3 Slot 5



2.4.4 Slot 6

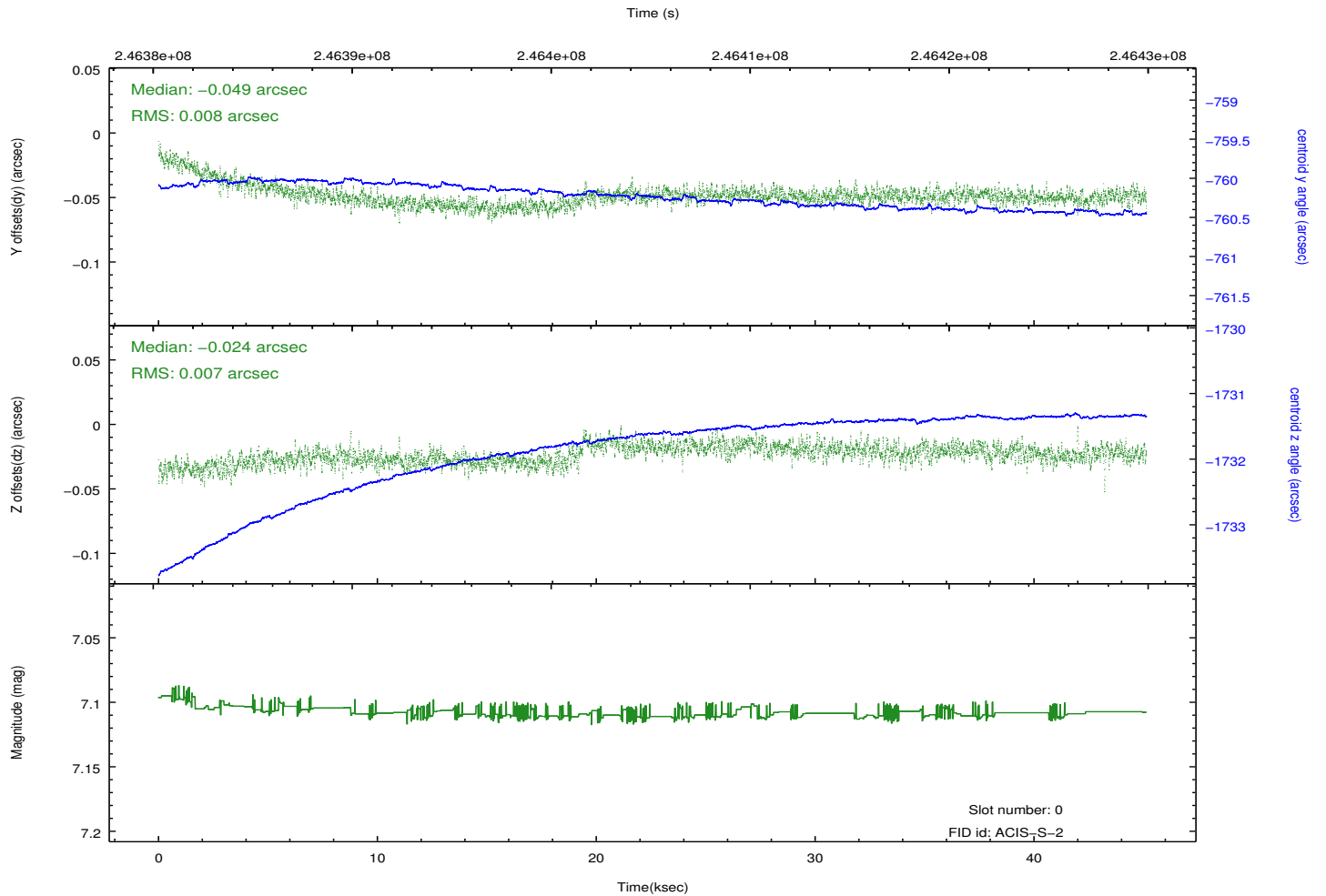
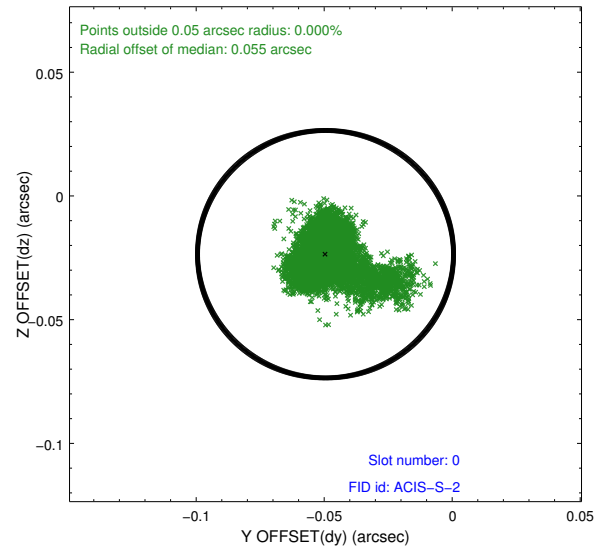
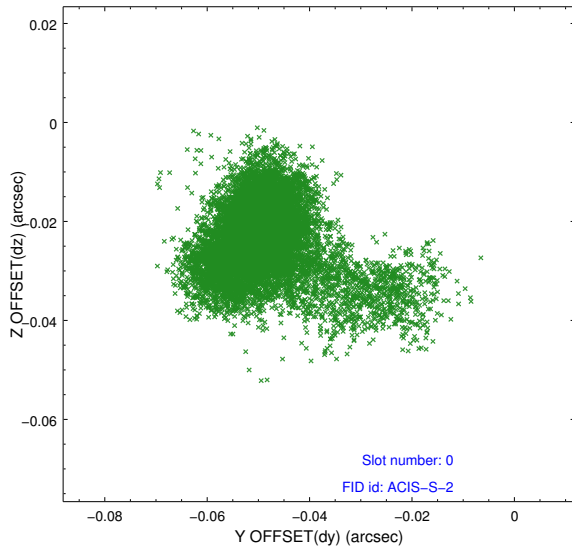


2.4.5 Slot 7

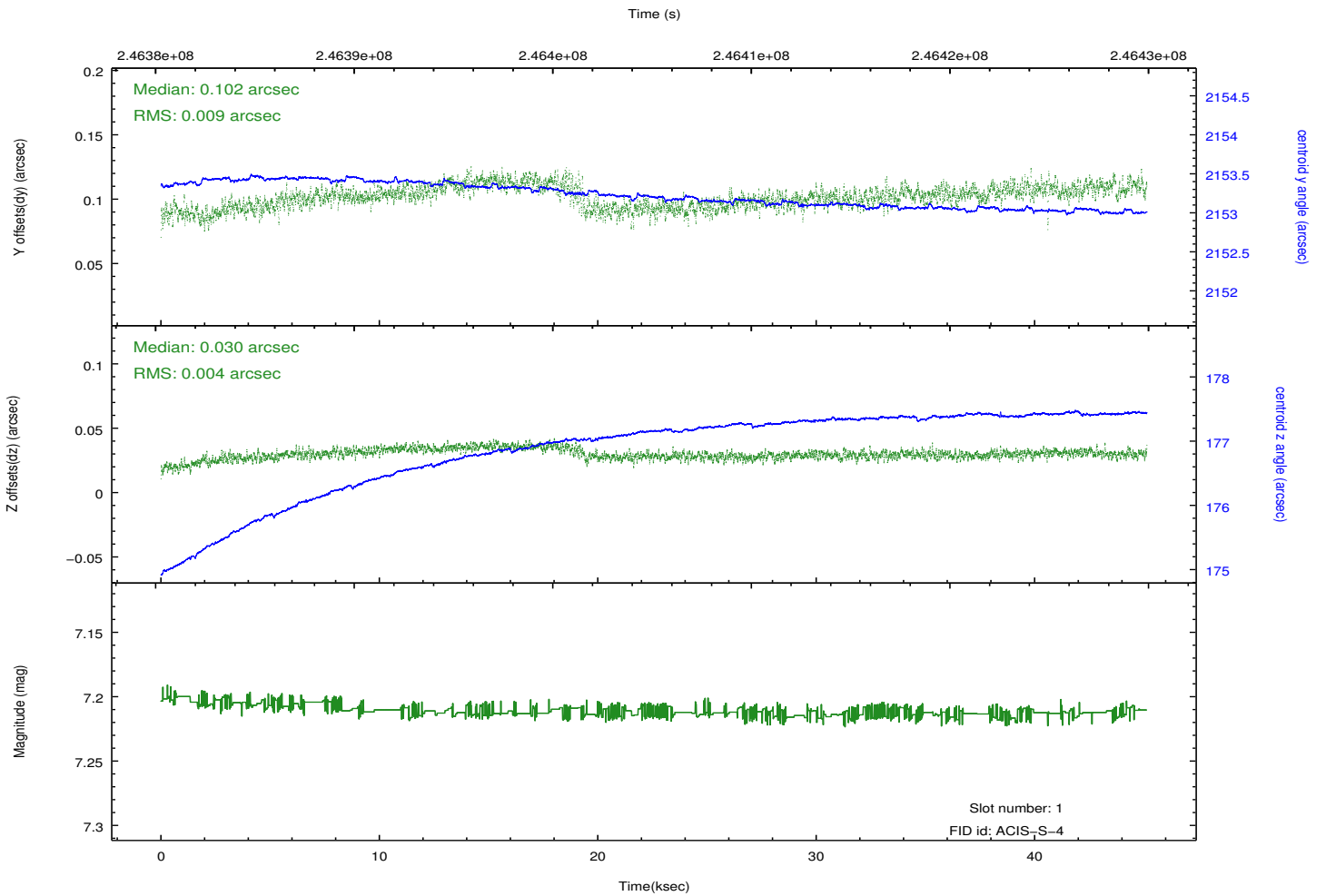
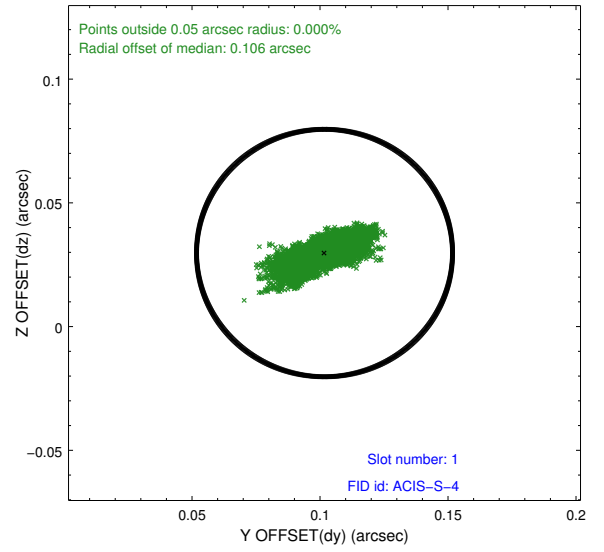
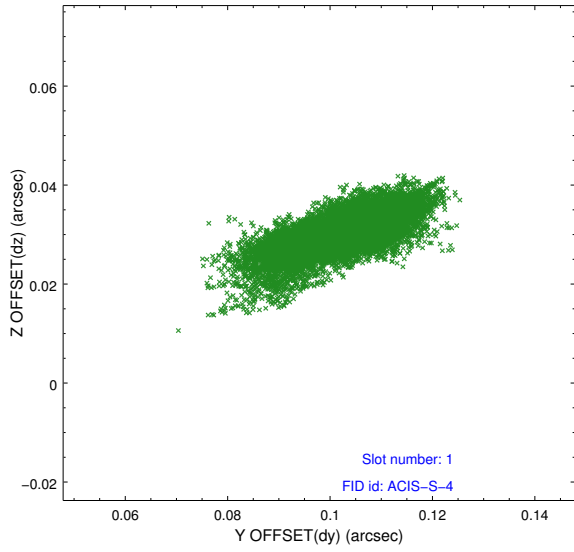


2.5 FID Slots

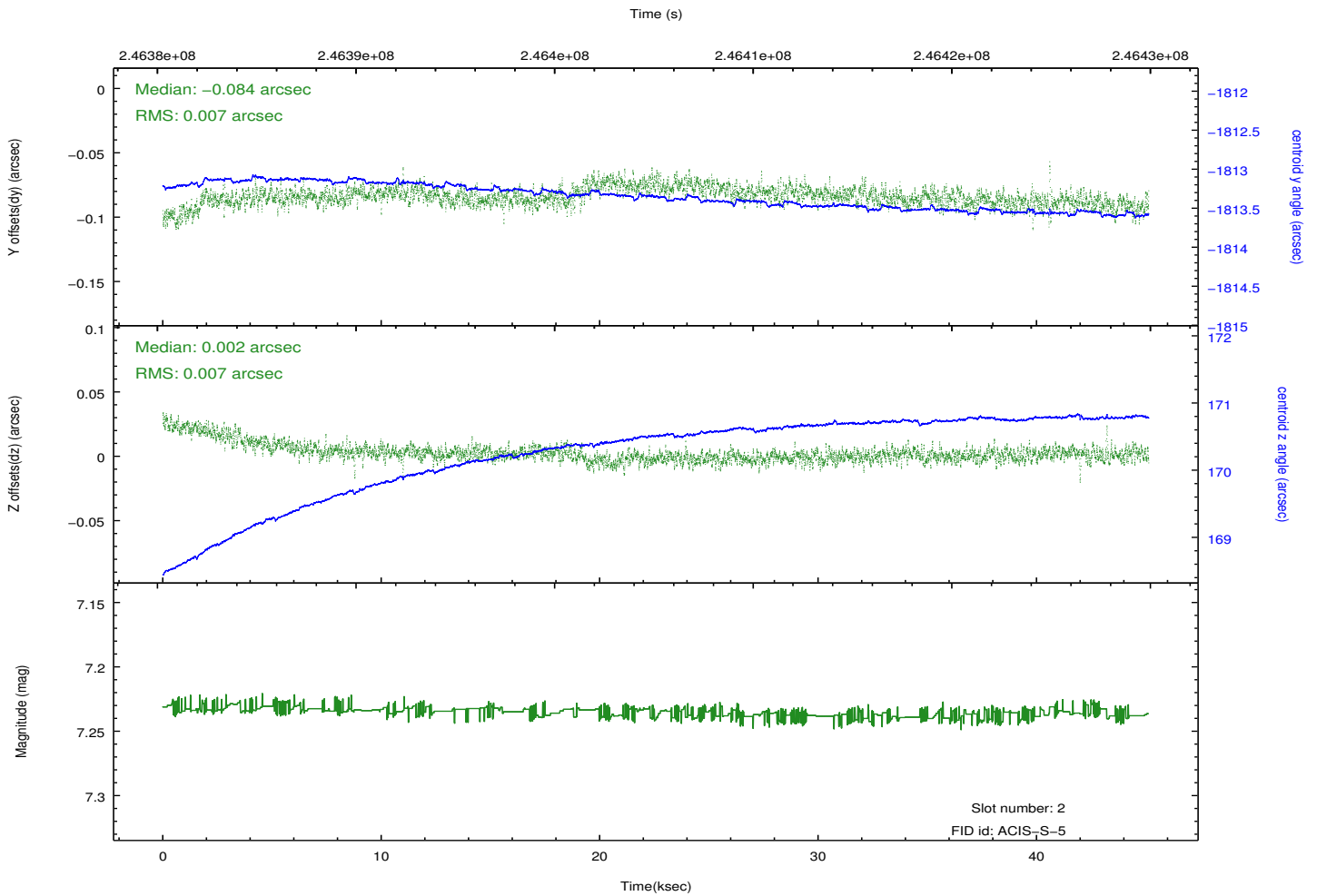
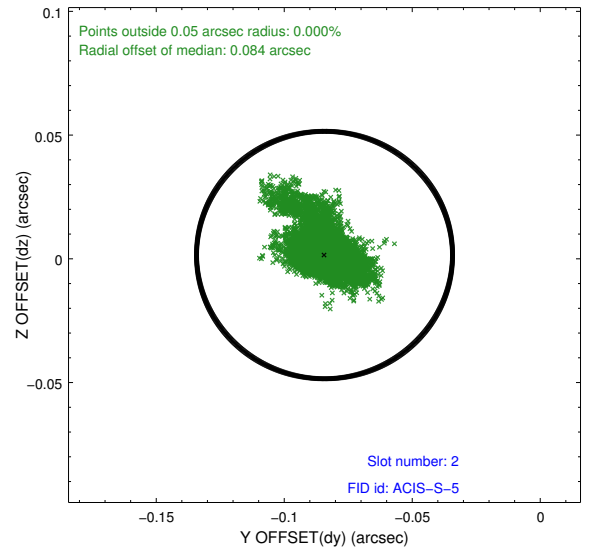
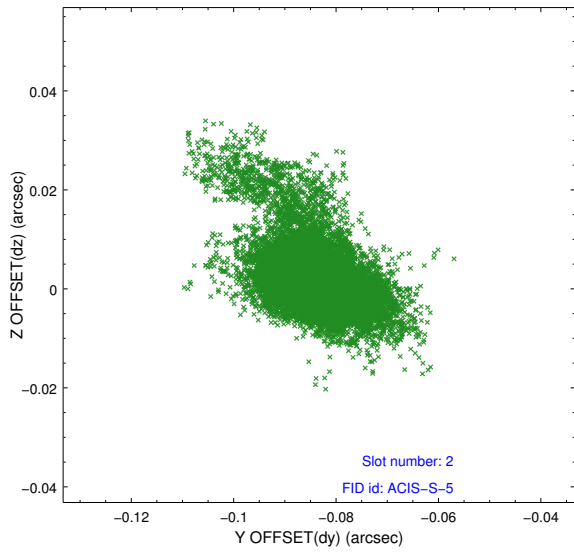
2.5.1 Slot 0



2.5.2 Slot 1



2.5.3 Slot 2



A Summary

A.1 Status

V&V Scientist	Jen Lauer
V&V Date (YYYY-MM-DD)	2013.01.28
V&V Edition	1
V&V Disposition and Status	OK
V&V Charge Time	45.13289

A.2 Comments