

V&V Reference Report

L2 ASCDS Version : 8.5.1.1

Observation 6060 - L2 Version 3
Chandra X-Ray Center

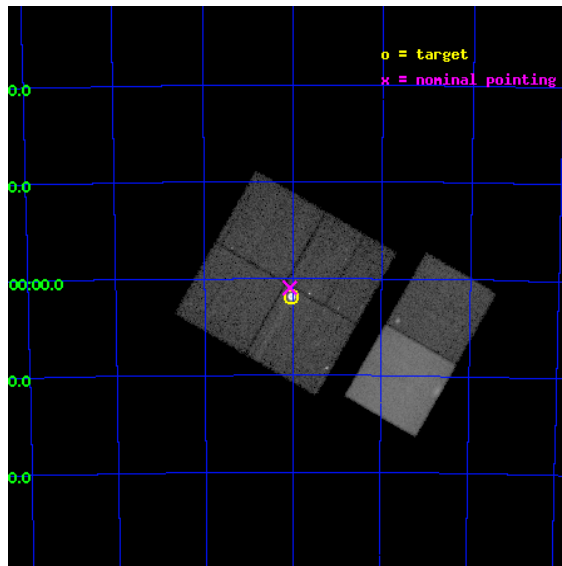
L2 Processing Date : Dec 24 2012

Contents

1	Front	2
2	OBI	3
2.1	OBI	3
2.1.1	Images	3
2.1.2	Bias	3
2.1.3	Parameters	4
2.1.4	Events	4
2.2	Compared Parameters	5
2.3	Aspect	6
2.4	Star Slots	9
2.4.1	Slot 3	9
2.4.2	Slot 4	10
2.4.3	Slot 5	11
2.4.4	Slot 6	12
2.4.5	Slot 7	13
2.5	FID Slots	14
2.5.1	Slot 0	14
2.5.2	Slot 1	15
2.5.3	Slot 2	16
A	Summary	17
A.1	Status	17
A.2	Comments	17

1 Front

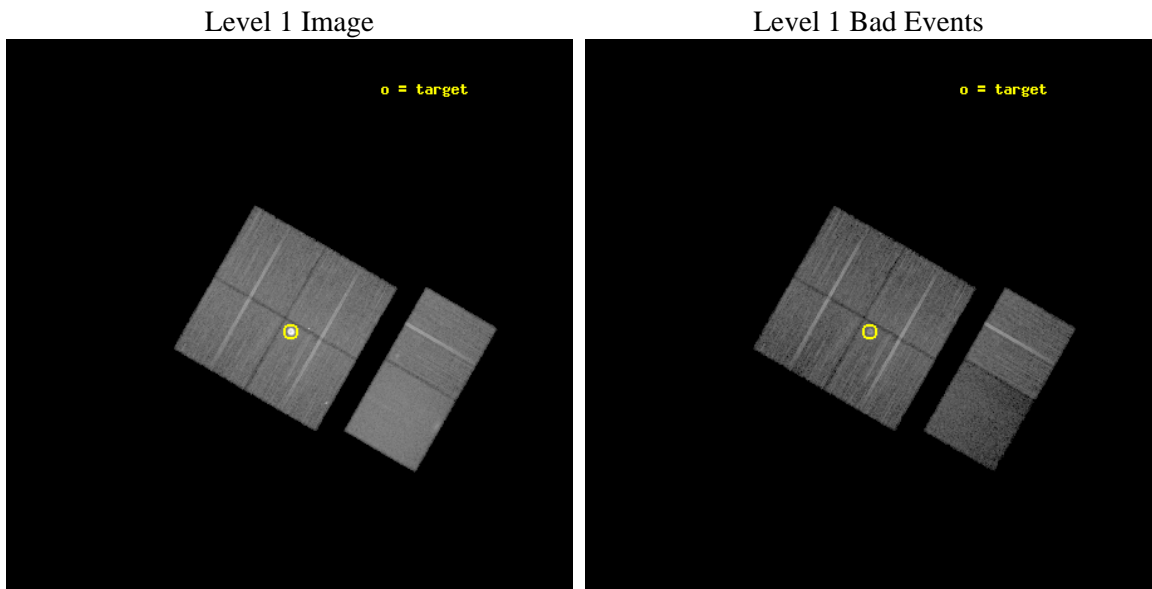
seq_num	590387	Sequence number
obs_id	6060	Observation id
title	AO6B ACIS-I Calibration Observations of E0102-72	Proposal title
observer	Dr. CXC Calibration	Principal investigator
object	E0102-72[I3,-120,-0.5,0.5,0]	Source name
dtycycle	0	
cycle	P	events from which exps? Prim/Second/Both
ra_targ	16.01	Observer's specified target RA [deg]
dec_targ	-72.032028	Observer's specified target Dec [deg]
ra_nom	16.018294082416	Nominal RA [deg]
dec_nom	-72.016053925161	Nominal Dec [deg]
roll_nom	119.93656036974	Nominal Roll [deg]
revision	3	Processing version of data
ontime	20057.59992528	Sum of GTIs [s]
livetime	19803.618517789	Livetime [s]
ontime0	20054.35901472	Sum of GTIs [s]
ontime1	20054.358974904	Sum of GTIs [s]
ontime2	20054.358954966	Sum of GTIs [s]
ontime3	20057.59992528	Sum of GTIs [s]
ontime6	20054.358954996	Sum of GTIs [s]
ontime7	20057.59992528	Sum of GTIs [s]
l2events	305310	Number of level 2 events



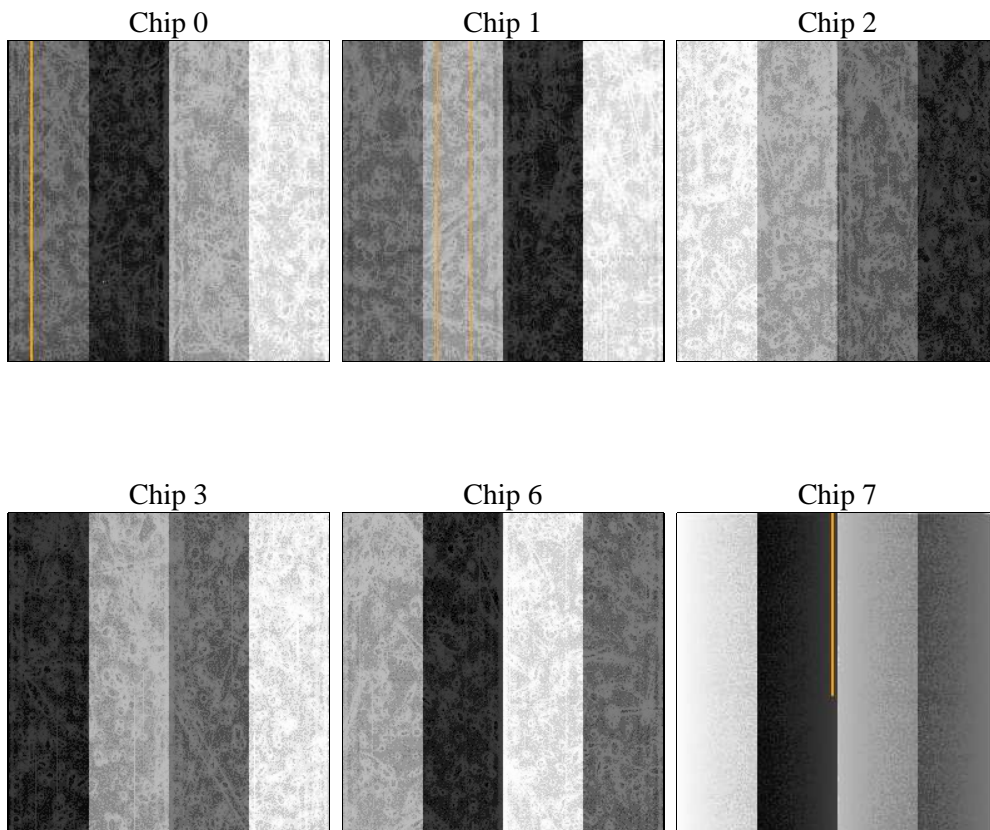
2 OBI

2.1 OBI

2.1.1 Images



2.1.2 Bias



2.1.3 Parameters

obi_num	0	Obi number	sched_exp_time	20100.000000	[s] Scheduled observation exposure time
ascdsver	8.5.1.1	Processing system revision	ontime	20057.59992528	Sum of GTIs [s]
caldsver	4.5.5	 	ontime0	20054.35901472	Sum of GTIs [s]
date	2012-12-24T14:16:58	Date and time of file creation	ontime1	20054.358974904	Sum of GTIs [s]
revision	3	Processing version of data	ontime2	20054.358954966	Sum of GTIs [s]
			ontime3	20057.59992528	Sum of GTIs [s]
			ontime6	20054.358954996	Sum of GTIs [s]
			ontime7	20057.59992528	Sum of GTIs [s]
			l1events	906467	Number of level 1 events

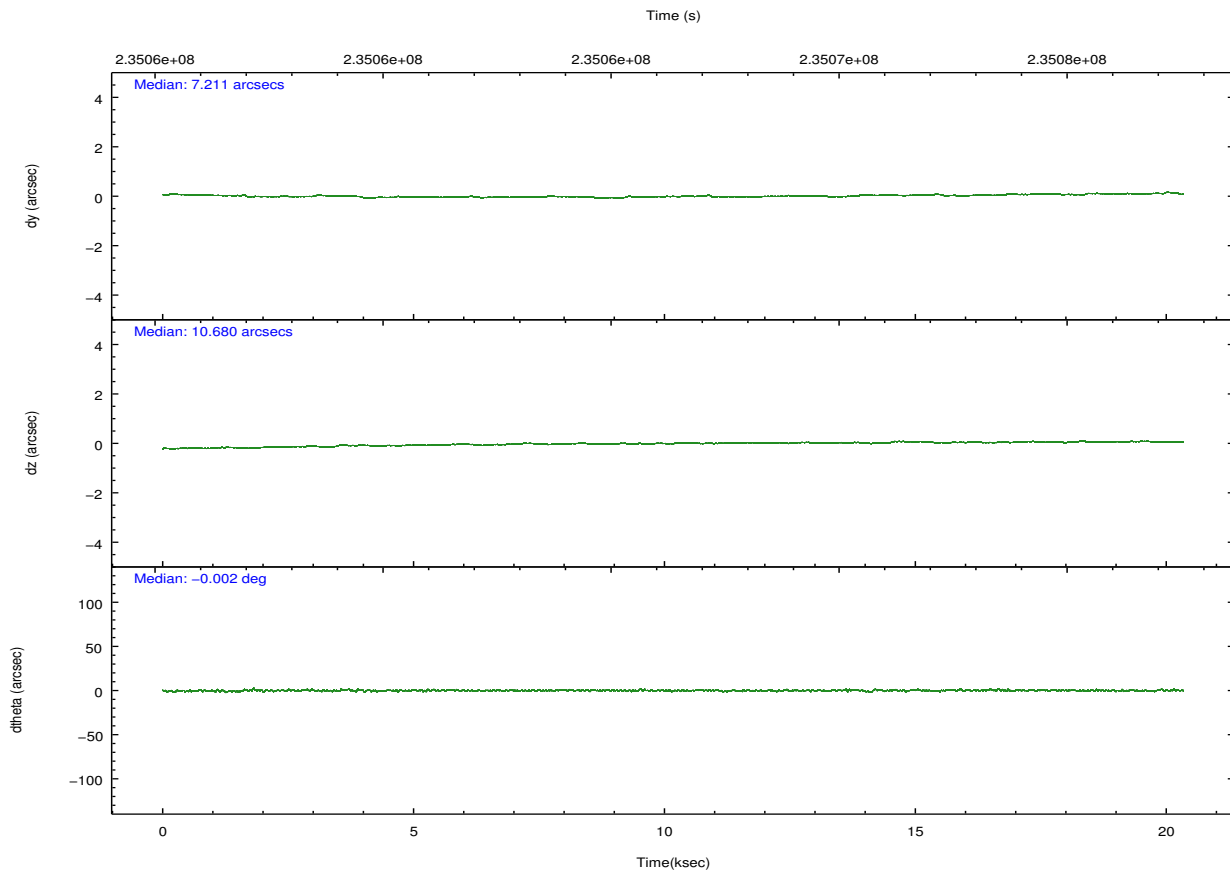
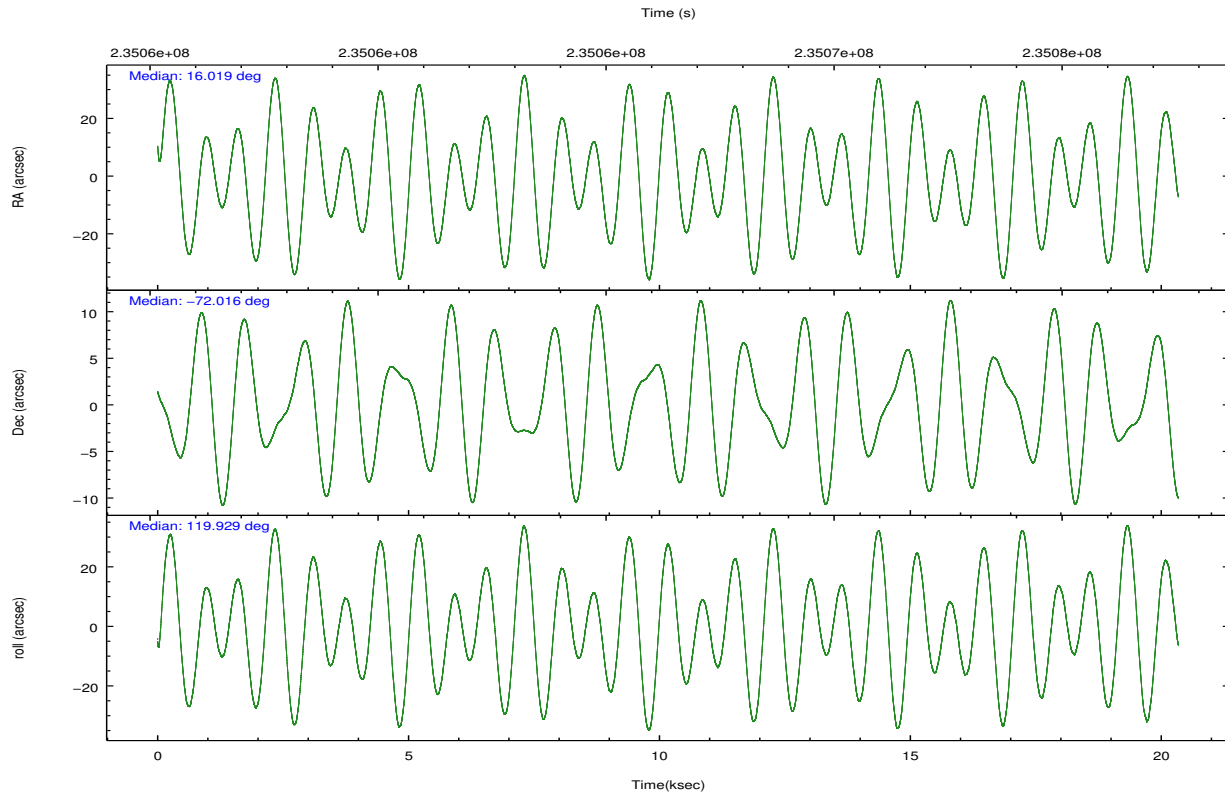
2.1.4 Events

	ccd 0	ccd 1	ccd 2	ccd 3	ccd 6	ccd 7		ccd 0	ccd 1	ccd 2	ccd 3	ccd 6	ccd 7
level 1 events	125456	124527	138845	202012	142870	172757	grade 0 events	14520	15150	16146	73152	18819	12873
rejected events	98617	96434	110936	110447	110553	56971		11%	12%	11%	36%	13%	7%
rejected %	78%	77%	79%	54%	77%	32%	grade 1 events	132	101	147	861	114	122
								0%	0%	0%	0%	0%	0%
							grade 2 events	4690	4575	4576	8715	4995	22516
								3%	3%	3%	4%	3%	13%
							grade 3 events	2042	2096	1885	2929	2132	10155
								1%	1%	1%	1%	1%	5%
							grade 4 events	1925	2142	2017	2867	2054	9969
								1%	1%	1%	1%	1%	5%
							grade 5 events	3616	3878	3211	4305	4169	12464
								2%	3%	2%	2%	2%	7%
							grade 6 events	3684	4153	3292	3917	4326	60307
								2%	3%	2%	1%	3%	34%
							grade 7 events	94847	92432	107571	105266	106261	44351
								75%	74%	77%	52%	74%	25%

2.2 Compared Parameters

Parameter	Planned	Actual	Parameter	Planned	Actual
Instrument	ACIS	ACIS	Obspar format version number	7	7
Detector	ACIS-012367	ACIS-012367	Obspar file type	PREDICTED	ACTUAL
Grating	NONE	NONE	Obspar update status	NONE	UPDATED
Data mode	VFAINT	VFAINT	Number of optional ACIS chips dropped	0	0
Observation mode	POINTING	POINTING	On-chip summing requested	N	N
[deg] Pointing RA	16.095241	16.01829408241611	Subarray requested	NONE	NONE
[deg] Pointing Dec	-72.029659	-72.01605392516061	Alternating exposures requested	N	N
[deg] Pointing Roll	119.801065	119.9365603697355	[s] Primary exposure time	0.000000	3.2
[s] Window start time (MET)	231292864.184000	231292864.184000			
[s] Window stop time (MET)	236476864.184000	236476864.184000			
[mm] SIM focus pos	-0.782348	-0.7809083437167272			
[mm] SIM defocus	0	0.001439871863259334			
[mm] SIM translation stage pos	-233.592463	-233.5874344608287			
[mm] SIM translation stage offset	0	-0.005018542100998502			
[s] Observation start time (MET)	235056435.184000	235055443.5656			
Observation start date	2005-06-13T13:26:11	2005-06-13T13:10:43			
[s] Observation end time (MET)	235076535.184000	235077276.5791			
Observation end date	2005-06-13T19:01:11	2005-06-13T19:14:36			
Read mode	TIMED	TIMED			

2.3 Aspect

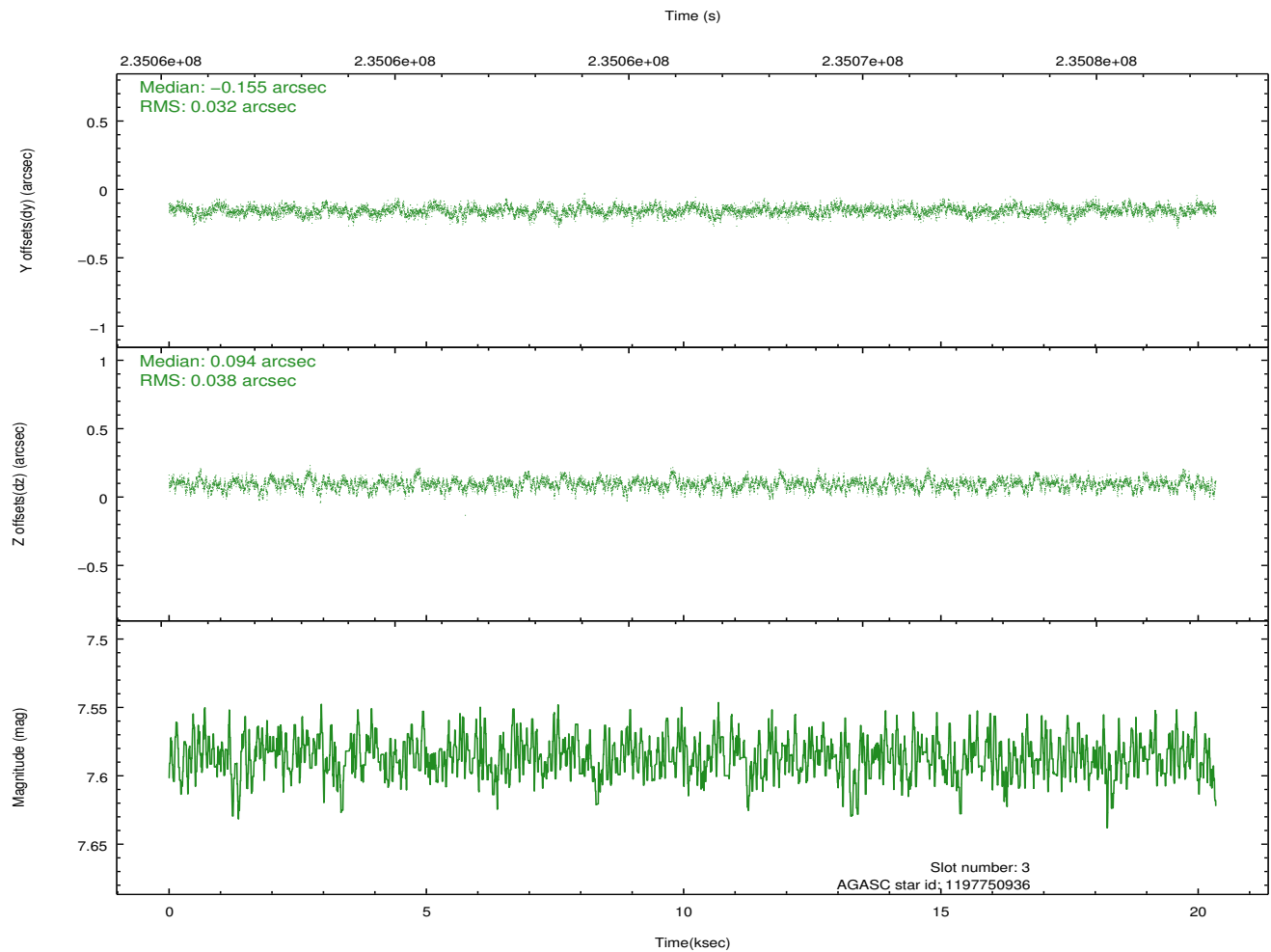
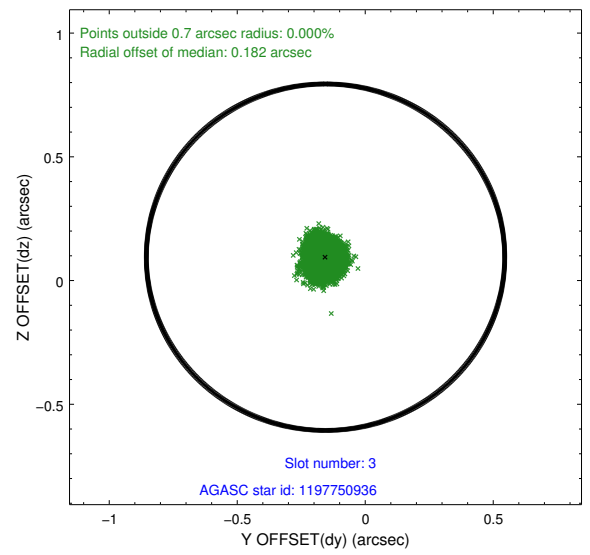
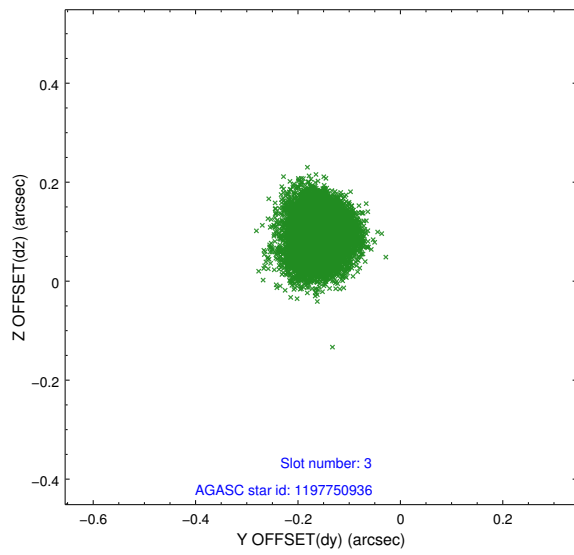


Slot Statistics

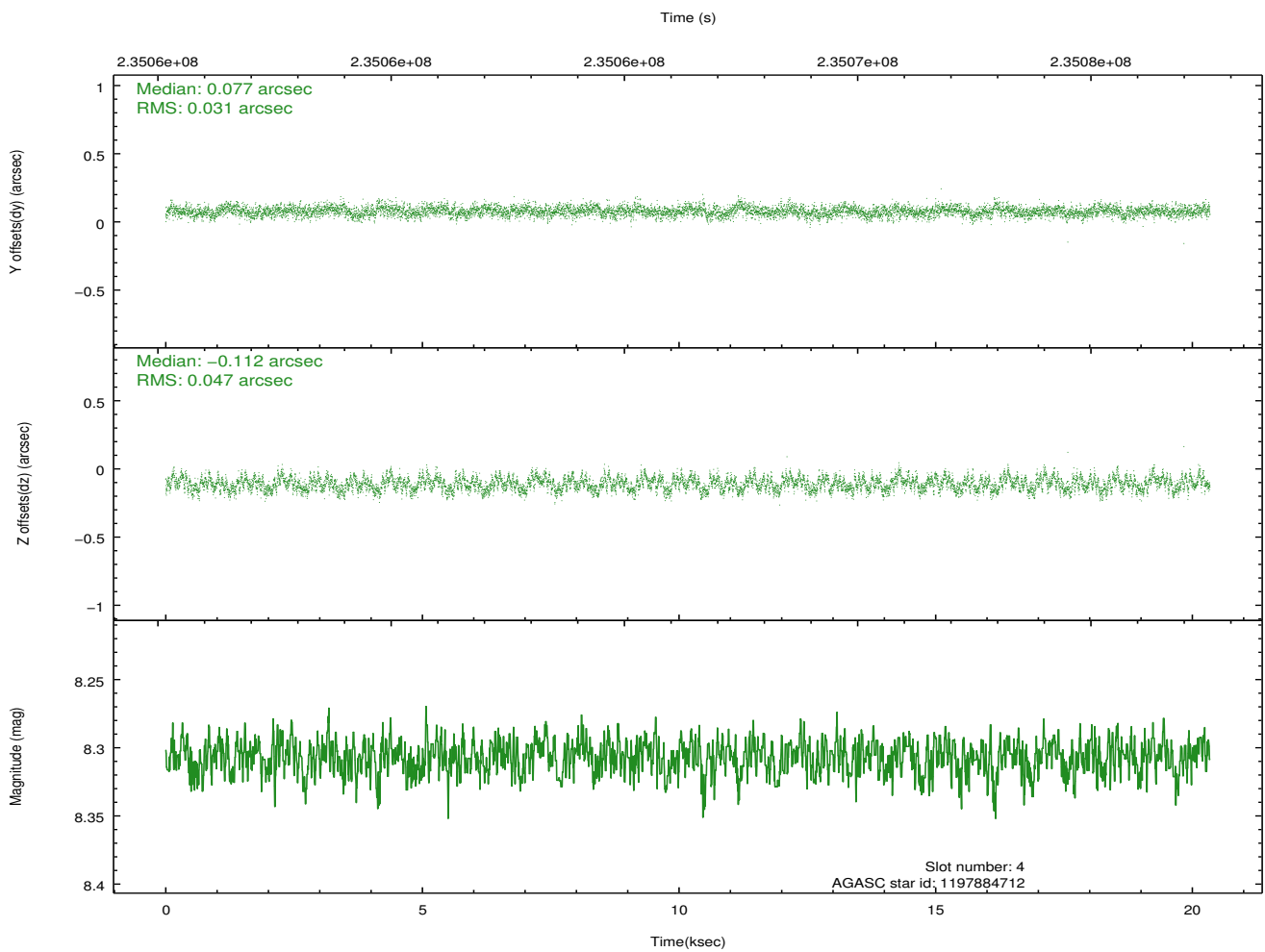
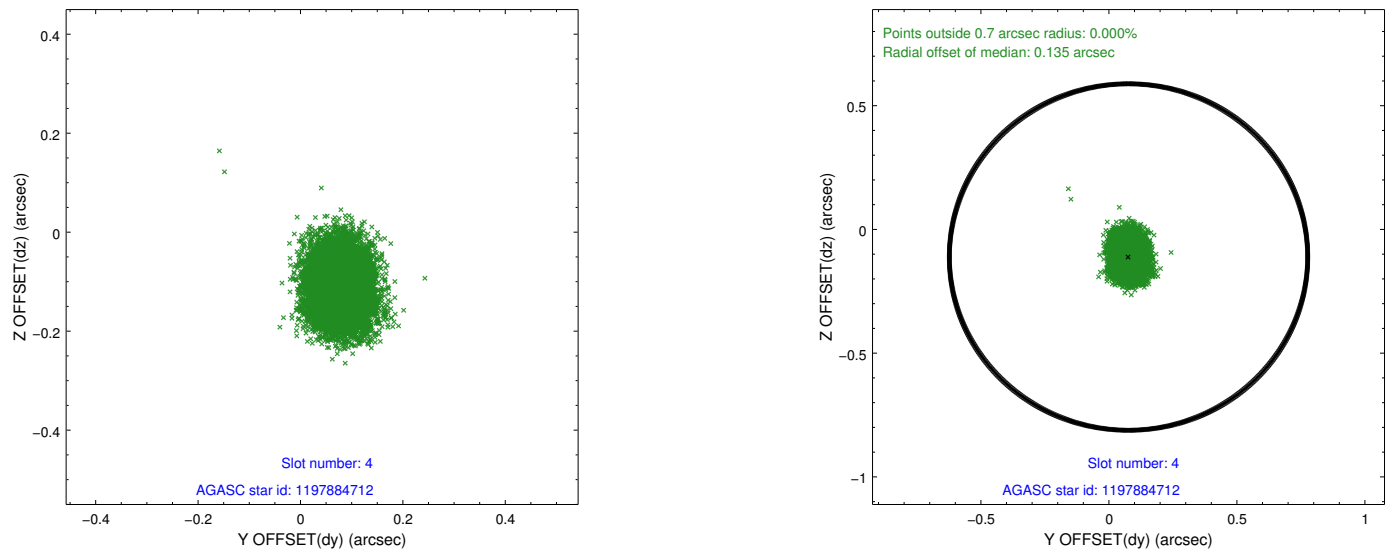
slot	status	id	mag	n_pts	med_dy	med_dz	dr1	dr2	ra	dec	mean_y	mean_z
0	FID	ACIS-I-2	7.14	4962	-0.065	-0.076	0.010	0.017	0.000000	0.000000	-761.79	-840.58
1	FID	ACIS-I-4	7.18	4962	0.145	0.063	0.008	0.013	0.000000	0.000000	2152.41	1065.62
2	FID	ACIS-I-5	7.23	4962	-0.181	0.082	0.010	0.016	0.000000	0.000000	-1815.49	1063.72
3	GUIDE	1197750936	7.59	9925	-0.155	0.094	0.053	0.086	15.387940	-71.549550	1896.18	-156.63
4	GUIDE	1197884712	8.31	9922	0.077	-0.112	0.060	0.097	16.087398	-72.252690	-691.97	406.59
5	GUIDE	1197885104	9.36	9911	0.013	0.169	0.081	0.136	17.845067	-72.189368	-1480.44	-1371.46
6	GUIDE	1197885328	7.25	9923	-0.058	0.033	0.044	0.071	16.283090	-71.733943	818.32	-713.15
7	GUIDE	1198189696	7.37	9924	0.123	-0.184	0.048	0.078	15.223750	-72.697522	-1628.40	2007.79

2.4 Star Slots

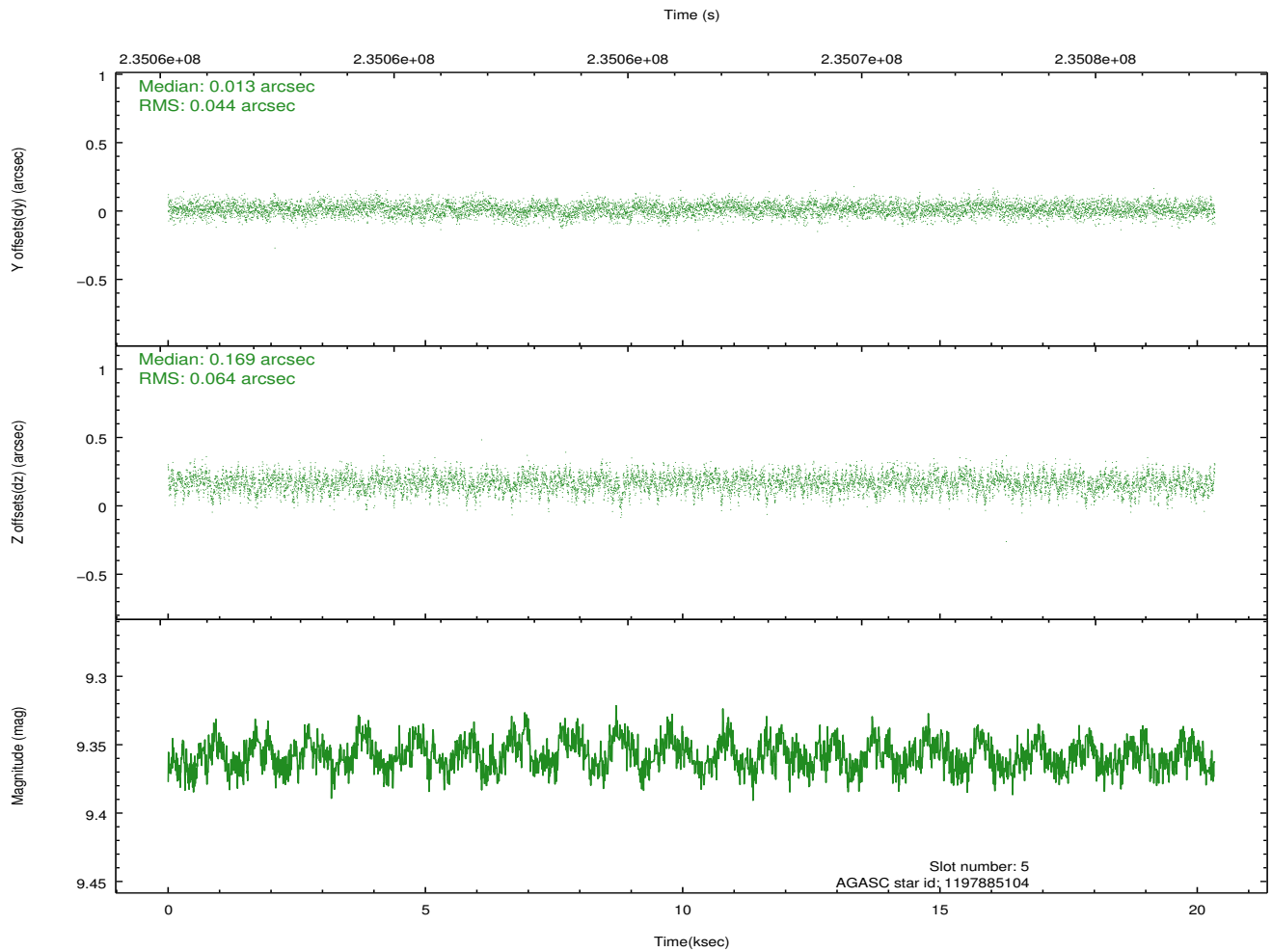
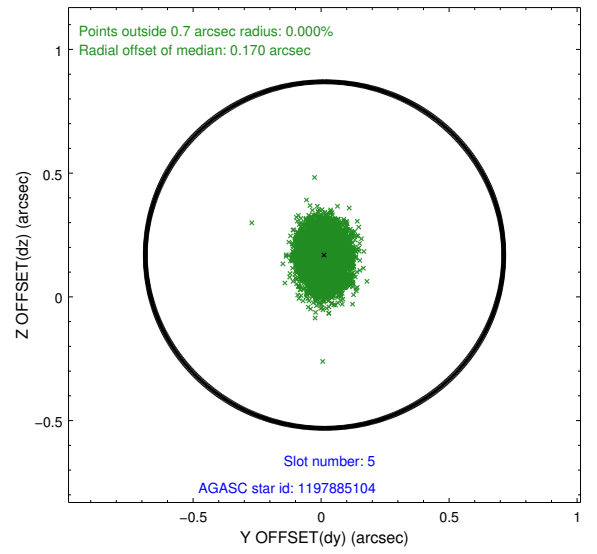
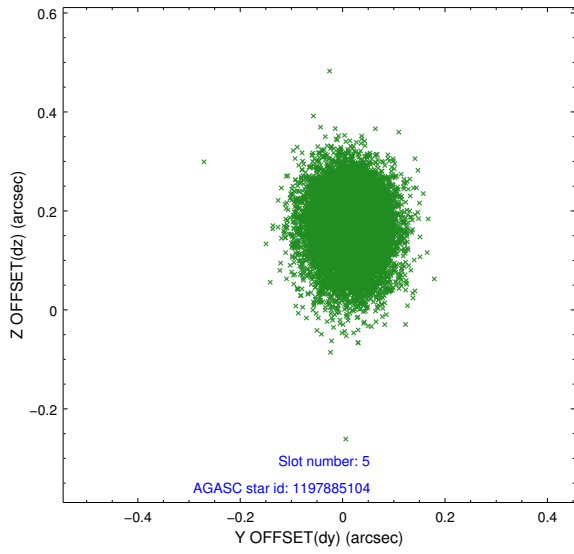
2.4.1 Slot 3



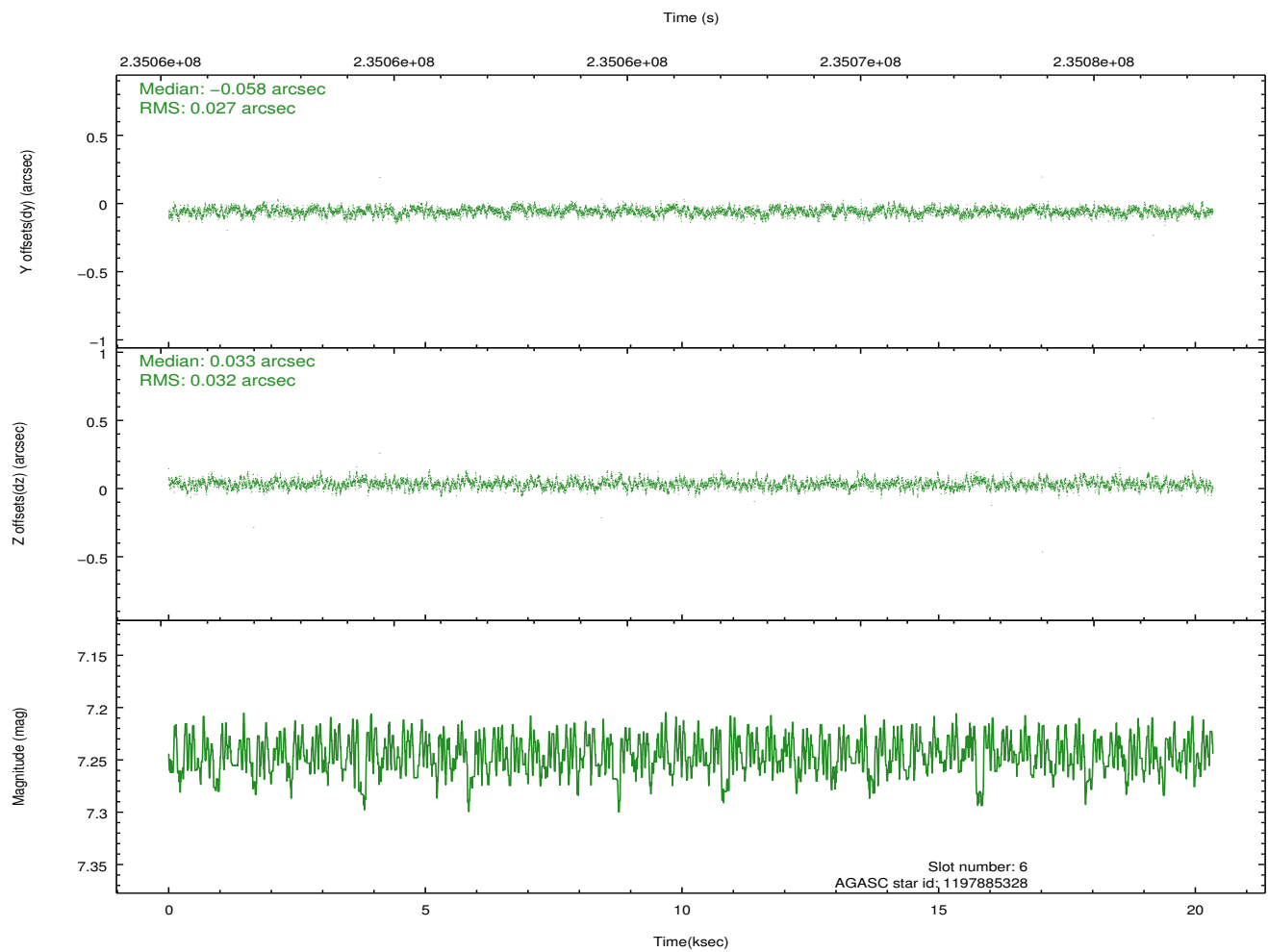
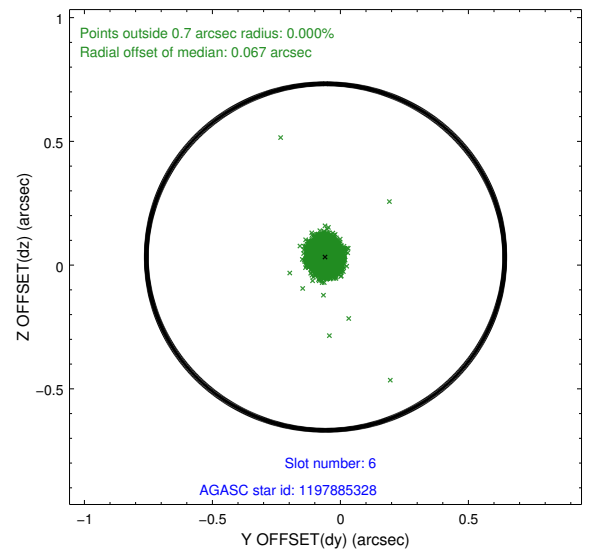
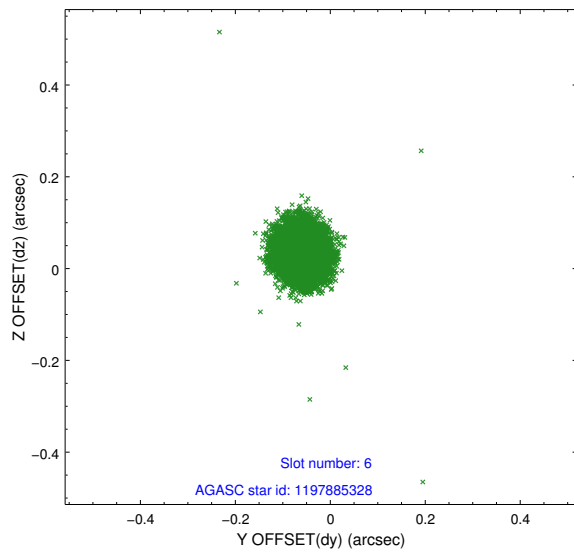
2.4.2 Slot 4



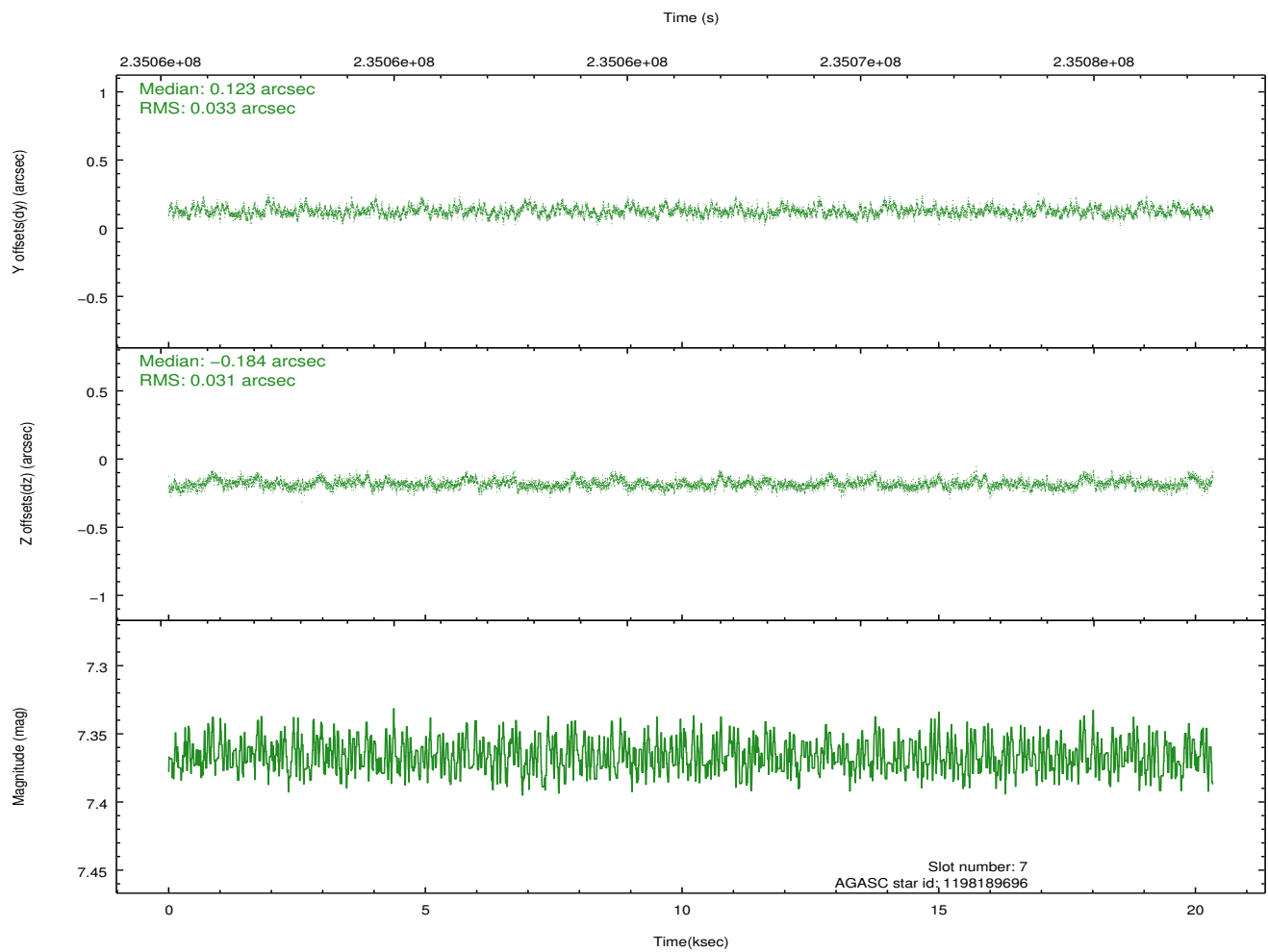
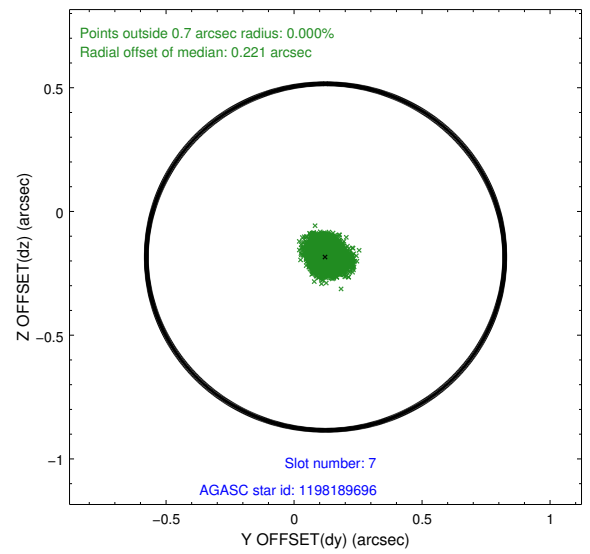
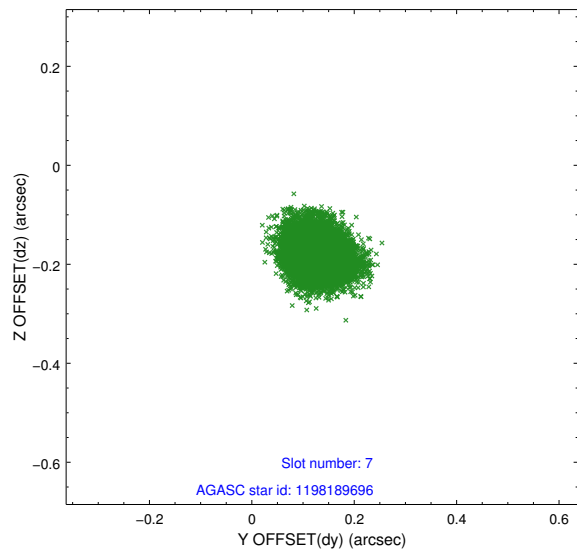
2.4.3 Slot 5



2.4.4 Slot 6

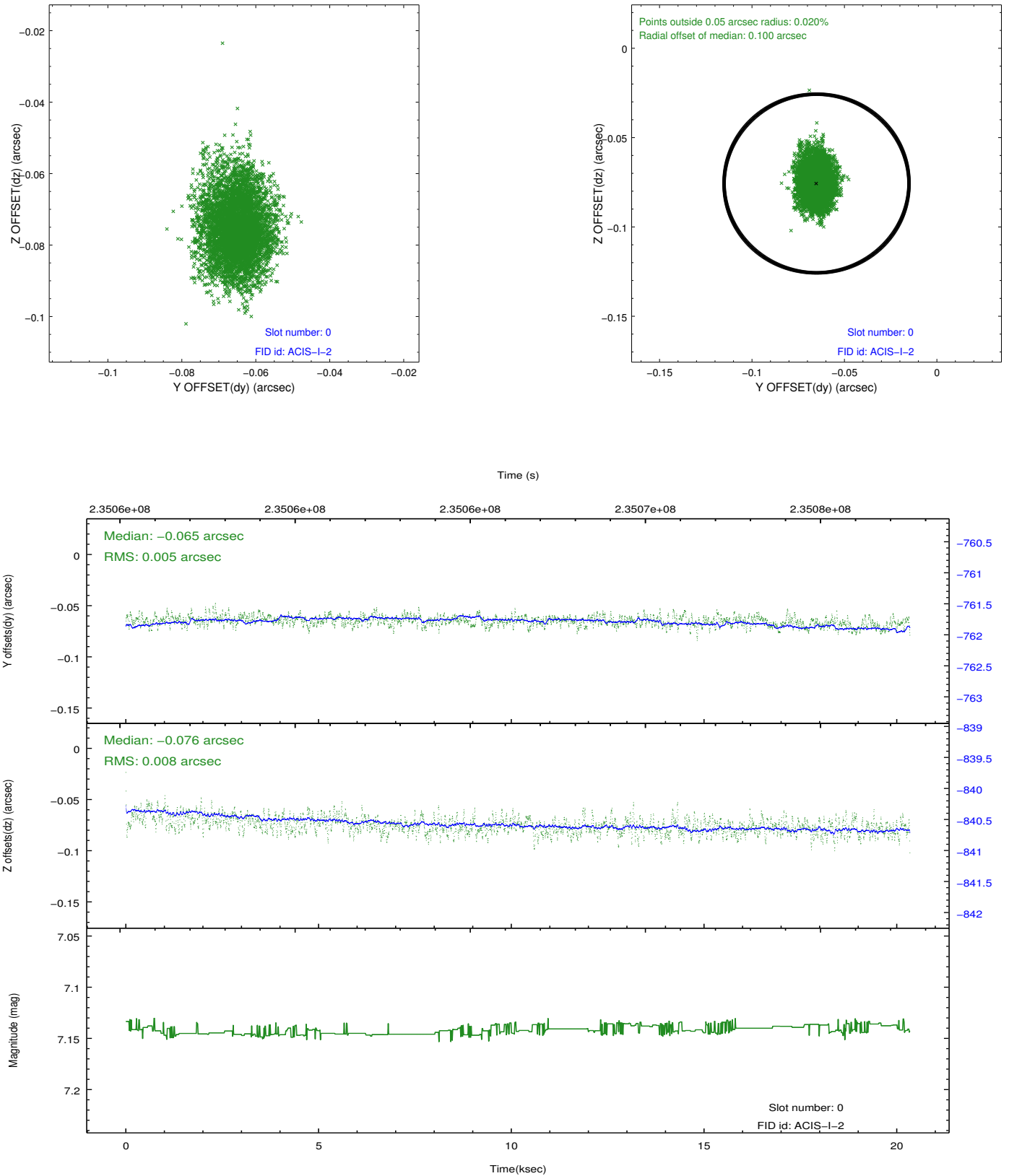


2.4.5 Slot 7

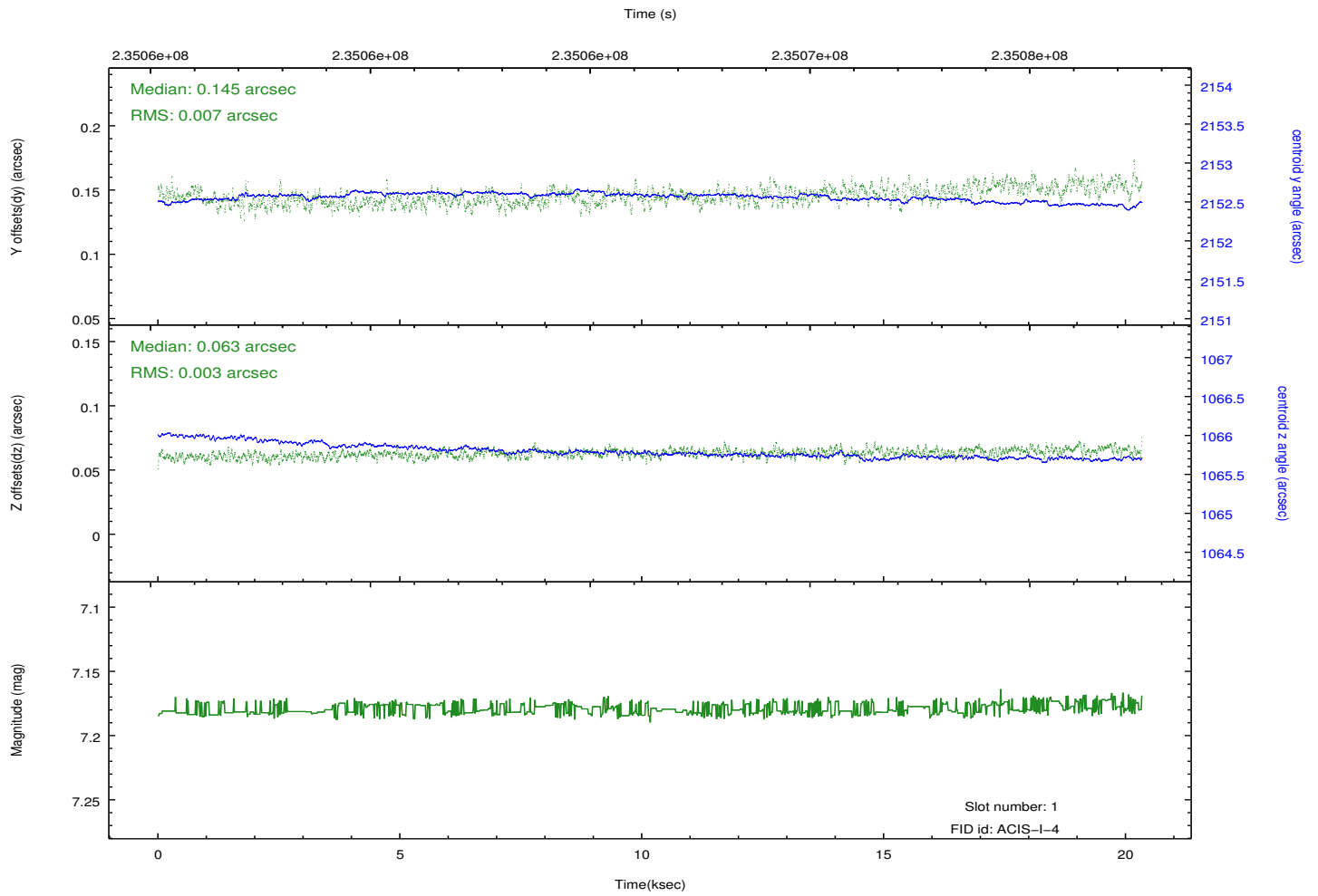
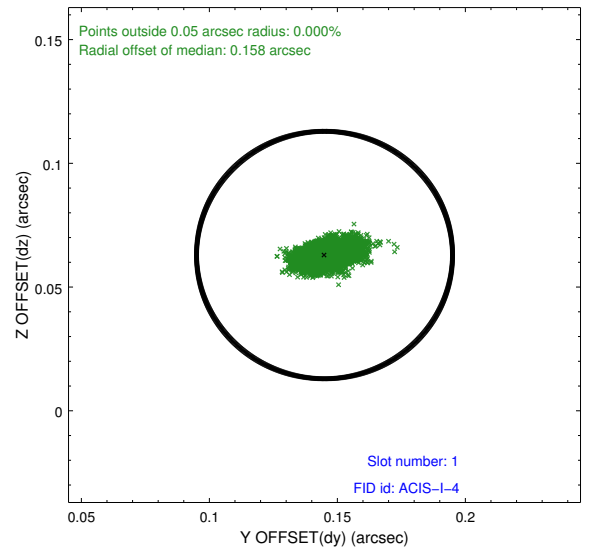
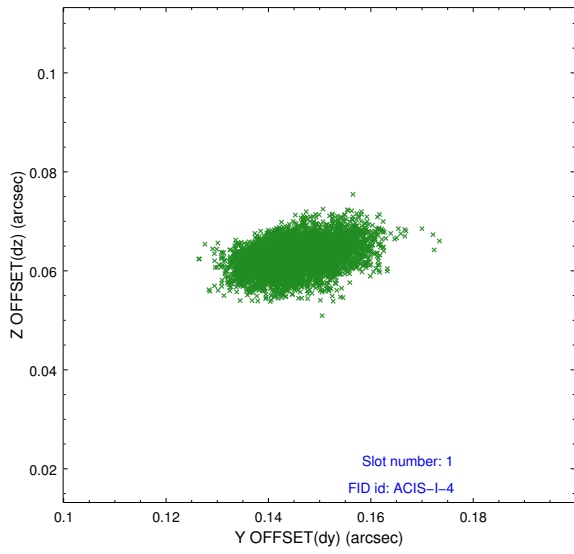


2.5 FID Slots

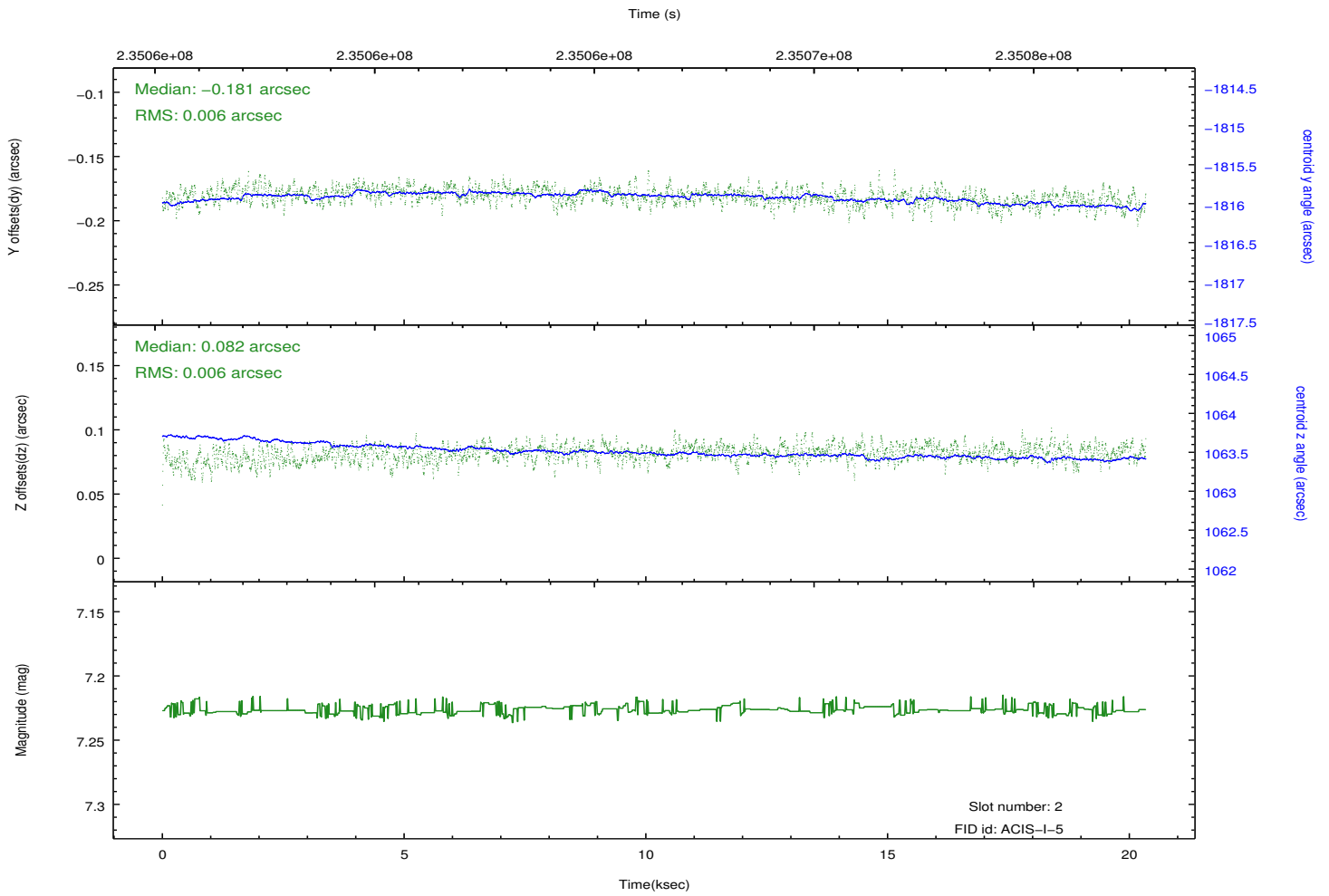
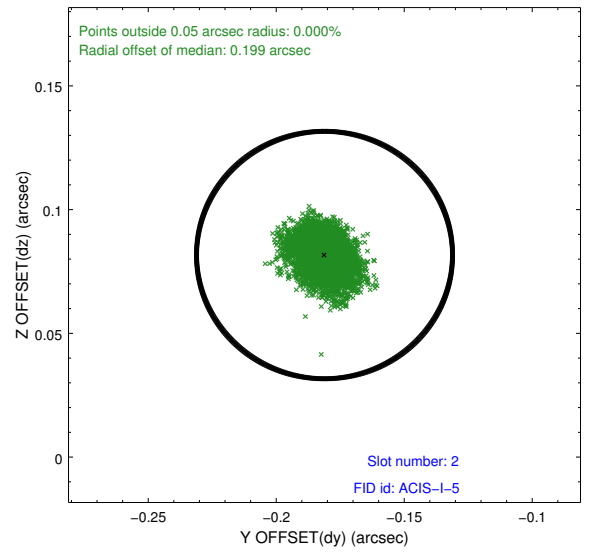
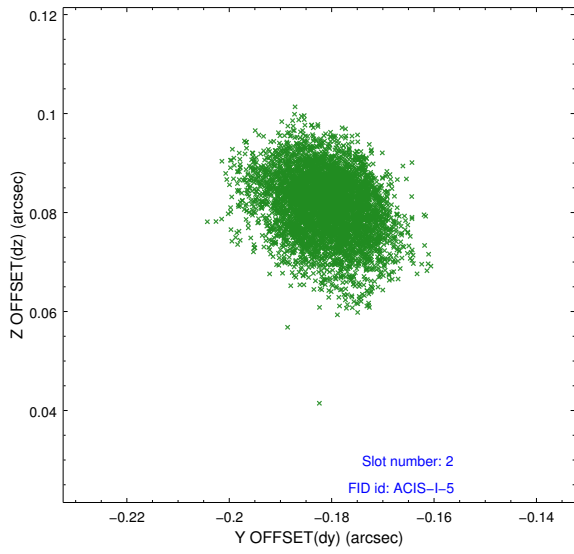
2.5.1 Slot 0



2.5.2 Slot 1



2.5.3 Slot 2



A Summary

A.1 Status

V&V Scientist	Jen Lauer
V&V Date (YYYY-MM-DD)	2013.01.17
V&V Edition	1
V&V Disposition and Status	OK
V&V Charge Time	20.05759

A.2 Comments

Time constraint met.