

V&V Reference Report

L2 ASCDS Version : 7.6.8.1

Observation 60690 - L2 Version 001
Chandra X-Ray Center

L2 Processing Date : Aug 7 2006

Contents

1	Front	2
2	OBI	3
2.1	OBI	3
2.1.1	Images	3
2.1.2	Bias	3
2.1.3	Parameters	4
2.1.4	Events	4
2.2	Compared Parameters	5
2.3	Aspect	6
2.4	Star Slots	8
2.5	FID Slots	8
A	Summary	9
A.1	Status	9
A.2	Comments	9

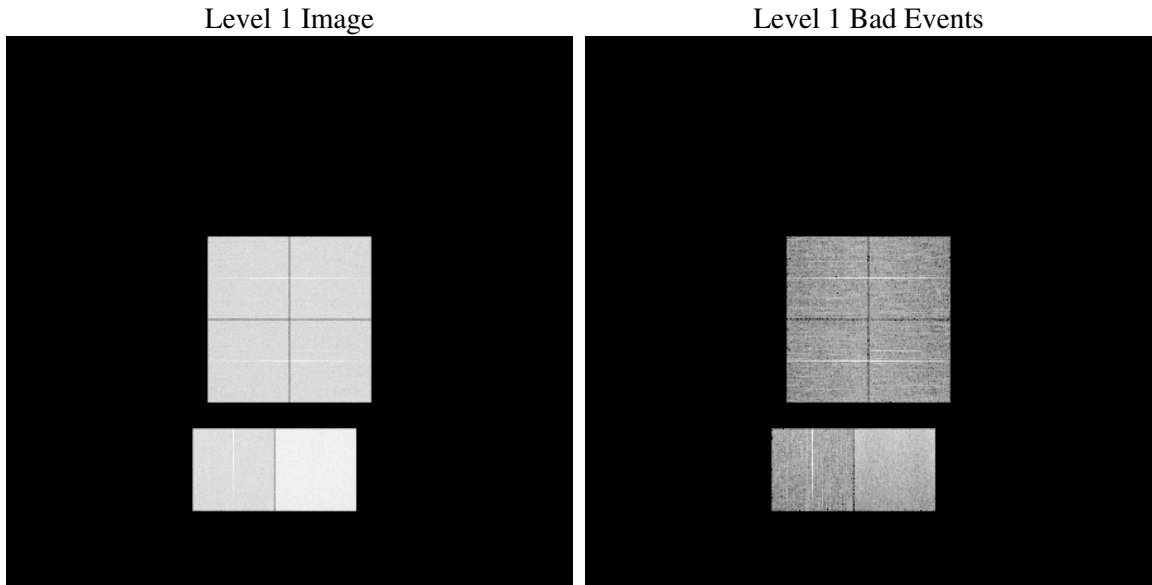
1 Front

seq_num	
obs_id	60690
title	ACIS-012367 diagnostics
observer	CHANDRA engineering request/realtime commanding
object	
dtcycle	0
cycle	P
ra_targ	0.0
dec_targ	0.0
ra_nom	299.96551407549
dec_nom	34.000808389553
roll_nom	145.50770903149
revision	2
ontime	12207.428012013
livetime	12052.850208095
ontime0	6986.2671894133
ontime1	7167.8027307987
ontime2	6749.7565974891
ontime3	6866.2690807879
ontime6	7333.1759893596
ontime7	12207.428012013
l2events	1814699

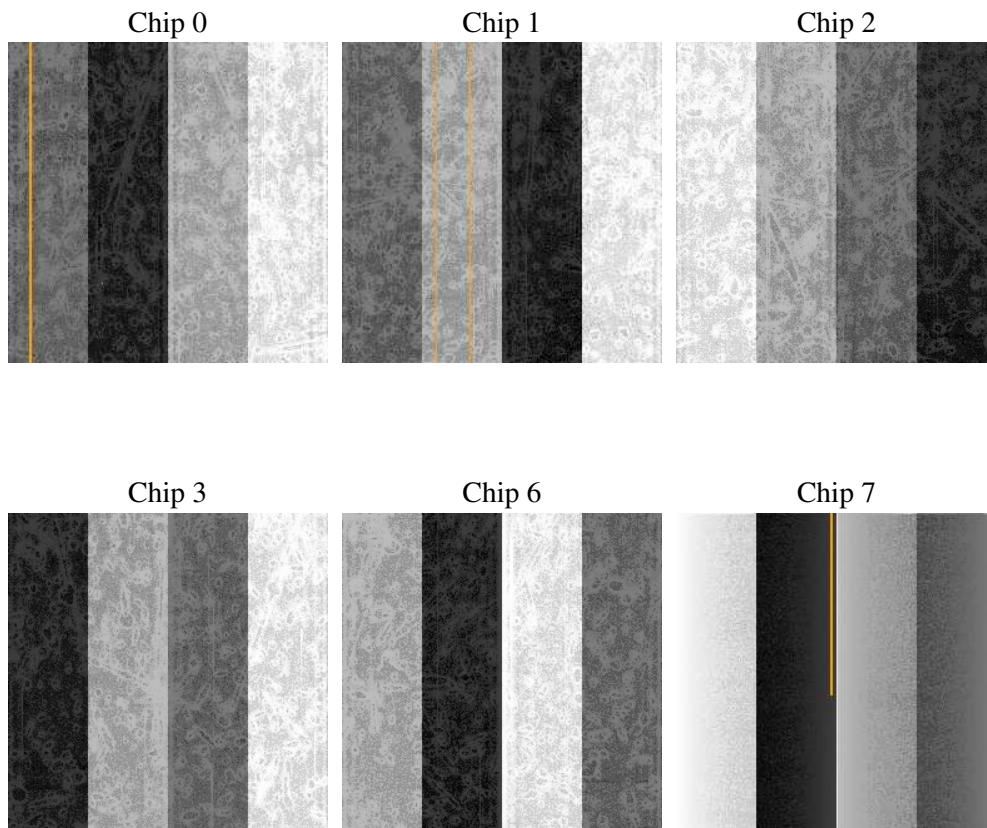
2 OBI

2.1 OBI

2.1.1 Images



2.1.2 Bias



2.1.3 Parameters

obi_num	0
ascdsver	7.6.8.1
caldbver	3.2.2
date	2006-08-07T08:19:10
revision	2

sched_exp_time	0.0
ontime	12208.850778639
ontime0	6987.6489160359
ontime1	7169.143417418
ontime2	6751.0562441051
ontime3	6867.7328874171
ontime6	7334.4345960021
ontime7	12208.850778639
l1events	2212044

2.1.4 Events

	ccd 0	ccd 1	ccd 2	ccd 3	ccd 6	ccd 7
level 1 events	319621	328224	315907	322066	354456	571770
rejected events	44800	44816	46007	47434	49693	80245
rejected %	14%	13%	14%	14%	14%	14%

	ccd 0	ccd 1	ccd 2	ccd 3	ccd 6	ccd 7
grade 0 events	151667	155244	151319	153850	164902	90588
	47%	47%	47%	47%	46%	15%
grade 1 events	794	726	843	877	805	238
	0%	0%	0%	0%	0%	0%
grade 2 events	47697	50432	45676	47013	52859	147479
	14%	15%	14%	14%	14%	25%
grade 3 events	17731	17849	17407	17824	18822	36576
	5%	5%	5%	5%	5%	6%
grade 4 events	17586	17946	17620	17882	18949	36012
	5%	5%	5%	5%	5%	6%
grade 5 events	3114	3190	2887	3295	3492	10362
	0%	0%	0%	1%	0%	1%
grade 6 events	40140	41937	37878	38063	49231	180870
	12%	12%	11%	11%	13%	31%
grade 7 events	40892	40900	42277	43262	45396	69645
	12%	12%	13%	13%	12%	12%

2.2 Compared Parameters

Parameter	Planned	Actual	Parameter	Planned	Actual
Instrument	ACIS	ACIS	Obspar format version number	6	6
Detector	ACIS-012367	ACIS-012367	Obspar file type	PREDICTED	ACTUAL
Grating	NONE	NONE	Obspar update status	NONE	UPDATED
Data mode	FAINT	FAINT	On-chip summing requested	N	N
Observation mode	SECONDARY	SECONDARY	Subarray requested	NONE	NONE
Pointing RA	0	299.9655140754856	Alternating exposures requested	N	N
Pointing Dec	0	34.00080838955279	Primary exposure time	0.000000	3.2
Pointing Roll	0.0	145.5077090314862			
SIM focus pos (mm)	-0.782348	-0.6828225247311905			
SIM defocus (mm)	0	0.8505141146731063			
SIM translation stage pos (mm)	-233.592463	250.466033080201			
SIM translation stage offset (mm)	0	-0.01005468664627074			
Observation start time	172246641.352371	172246640.32764			
Observation start date	2003-06-17T14:17:21	2003-06-17T14:17:20			
Observation end time	172281278.153845	172281277.12911			
Observation end date	2003-06-17T23:54:38	2003-06-17T23:54:37			
Read mode	TIMED	TIMED			

2.3 Aspect

2.4 Star Slots

2.5 FID Slots

A Summary

A.1 Status

V&V Scientist	Jen Lauer
V&V Date (YYYY-MM-DD)	2006.08.07
V&V Edition	1
V&V Disposition and Status	OK
V&V Charge Time	12.207428

A.2 Comments