

V&V Reference Report

L2 ASCDS Version : 8.4.5

Observation 60780 - L2 Version 3
Chandra X-Ray Center

L2 Processing Date : Oct 26 2012

Contents

1	Front	2
2	OBI	3
2.1	OBI	3
2.1.1	Images	3
2.1.2	Bias	3
2.1.3	Parameters	4
2.1.4	Events	4
2.2	Compared Parameters	5
2.3	Star Slots	6
2.4	FID Slots	6
A	Summary	7
A.1	Status	7
A.2	Comments	7

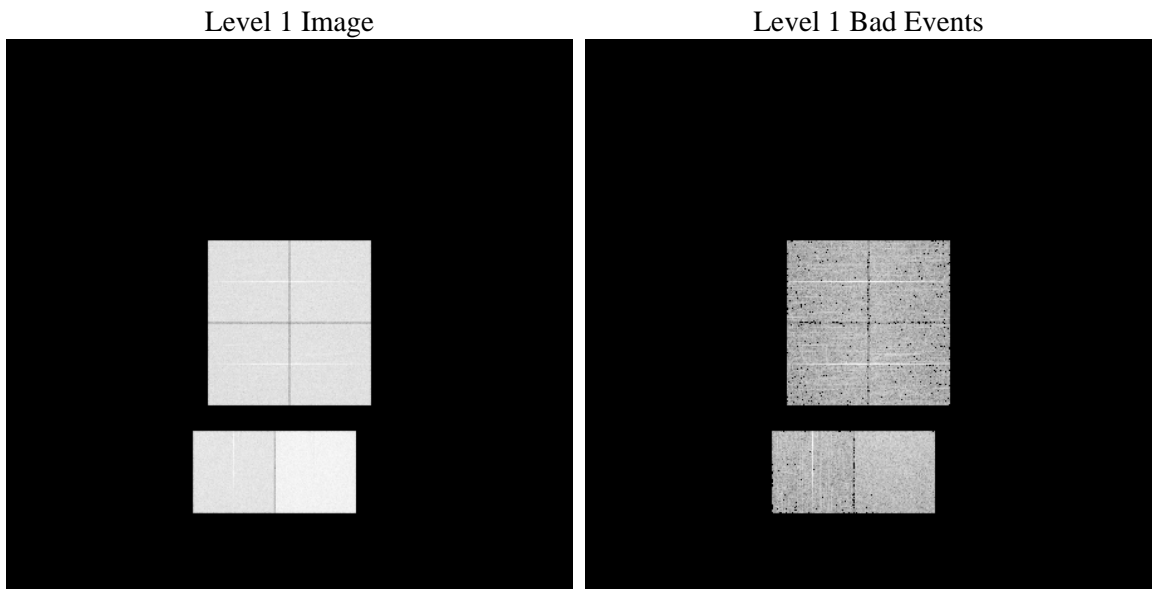
1 Front

seq_num	 	Sequence number
obs_id	60780	Observation id
title	ACIS-012367 diagnostics	Proposal title
observer	CHANDRA engineering request/realtime commanding	Principal investig
object	 	Source name
dtycle	0	
cycle	P	events from which exps? Prim/Second/Both
ra_targ	0.0	Observer's specified target RA [deg]
dec_targ	0.0	Observer's specified target Dec [deg]
ra_nom	170.00126038341	Nominal RA [deg]
dec_nom	9.9714458233574	Nominal Dec [deg]
roll_nom	239.57574554066	Nominal Roll [deg]
revision	3	Processing version of data
ontime	7794.8332526386	Sum of GTIs [s]
livetime	7696.1303805086	Livetime [s]
ontime0	4245.7470981479	Sum of GTIs [s]
ontime1	4436.966435045	Sum of GTIs [s]
ontime2	4103.2306107283	Sum of GTIs [s]
ontime3	4220.0702787042	Sum of GTIs [s]
ontime6	4602.2571265399	Sum of GTIs [s]
ontime7	7794.8332526386	Sum of GTIs [s]
l2events	1188154	Number of level 2 events

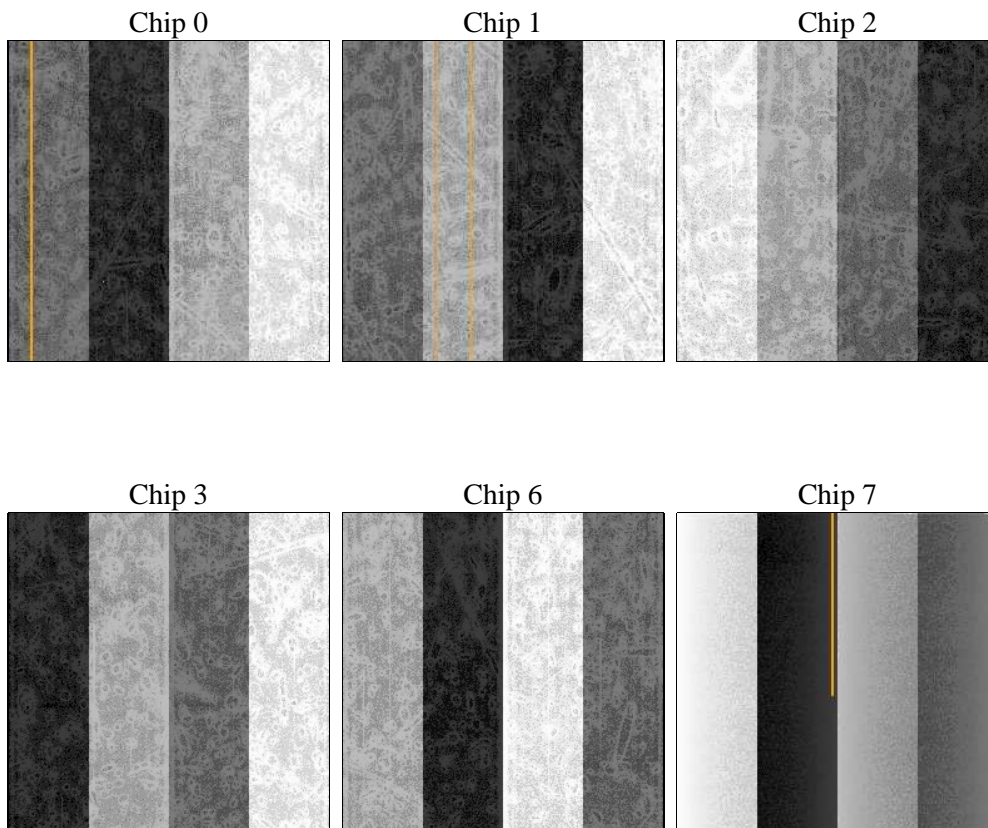
2 OBI

2.1 OBI

2.1.1 Images



2.1.2 Bias



2.1.3 Parameters

obi_num	0	Obi number	sched_exp_time	0.0	[s] Scheduled observation exposure time
ascdsver	8.4.5	Processing system revision	ontime	7794.8332526386	Sum of GTIs [s]
caldbver	4.5.2	 	ontime0	4245.7470981479	Sum of GTIs [s]
date	2012-10-26T16:38:12	Date and time of file creation	ontime1	4436.966435045	Sum of GTIs [s]
revision	3	Processing version of data	ontime2	4103.2306107283	Sum of GTIs [s]
			ontime3	4220.0702787042	Sum of GTIs [s]
			ontime6	4602.2571265399	Sum of GTIs [s]
			ontime7	7794.8332526386	Sum of GTIs [s]
			l1events	1426985	Number of level 1 events

2.1.4 Events

	ccd 0	ccd 1	ccd 2	ccd 3	ccd 6	ccd 7		ccd 0	ccd 1	ccd 2	ccd 3	ccd 6	ccd 7
level 1 events	202057	211391	198287	205492	229823	379935	grade 0 events	96214	100613	95646	99341	107673	85884
rejected events	27819	28127	27796	29097	30930	40362		47%	47%	48%	48%	46%	22%
rejected %	13%	13%	14%	14%	13%	10%	grade 1 events	526	497	561	596	485	228
								0%	0%	0%	0%	0%	0%
							grade 2 events	30357	32630	28671	29682	34154	75345
								15%	15%	14%	14%	14%	19%
							grade 3 events	11109	11720	11118	11529	12464	33996
								5%	5%	5%	5%	5%	8%
							grade 4 events	11198	11472	10959	11395	12482	33673
								5%	5%	5%	5%	5%	8%
							grade 5 events	1914	2048	1788	2037	2237	7800
								0%	0%	0%	0%	0%	2%
							grade 6 events	25360	26829	24241	24589	32120	110837
								12%	12%	12%	11%	13%	29%
							grade 7 events	25379	25582	25303	26323	28208	32172
								12%	12%	12%	12%	12%	8%

2.2 Compared Parameters

Parameter	Planned	Actual	Parameter	Planned	Actual
Instrument	ACIS	ACIS	Obspar format version number	7	7
Detector	ACIS-012367	ACIS-012367	Obspar file type	PREDICTED	ACTUAL
Grating	NONE	NONE	Obspar update status	NONE	UPDATED
Data mode	FAINT	FAINT	On-chip summing requested	N	N
Observation mode	SECONDARY	SECONDARY	Subarray requested	NONE	NONE
[deg] Pointing RA	0	170.0012603834129	Alternating exposures requested	N	N
[deg] Pointing Dec	0	9.971445823357405	[s] Primary exposure time	0.000000	3.2
[deg] Pointing Roll	0.0	239.5757455406575			
[mm] SIM focus pos	-0.782348	-0.6828225247311905			
[mm] SIM defocus	0	0.8505141146731063			
[mm] SIM translation stage pos	-233.592463	250.466033080201			
[mm] SIM translation stage offset	0	-0.01005468664627074			
[s] Observation start time (MET)	166539439.060658	166539438.03593			
Observation start date	2003-04-12T12:57:19	2003-04-12T12:57:18			
[s] Observation end time (MET)	166560467.961547	166560466.93682			
Observation end date	2003-04-12T18:47:48	2003-04-12T18:47:46			
Read mode	TIMED	TIMED			

2.3 Star Slots

2.4 FID Slots

A Summary

A.1 Status

V&V Scientist	Beth Sundheim
V&V Date (YYYY-MM-DD)	2012.12.06
V&V Edition	1
V&V Disposition and Status	OK
V&V Charge Time	7.7948332526386

A.2 Comments