

V&V Reference Report

L2 ASCDS Version : 8.4.5

Observation 60790 - L2 Version 3
Chandra X-Ray Center

L2 Processing Date : Oct 26 2012

Contents

1	Front	2
2	OBI	3
2.1	OBI	3
2.1.1	Images	3
2.1.2	Bias	3
2.1.3	Parameters	4
2.1.4	Events	4
2.2	Compared Parameters	5
2.3	Star Slots	6
2.4	FID Slots	6
A	Summary	7
A.1	Status	7
A.2	Comments	7

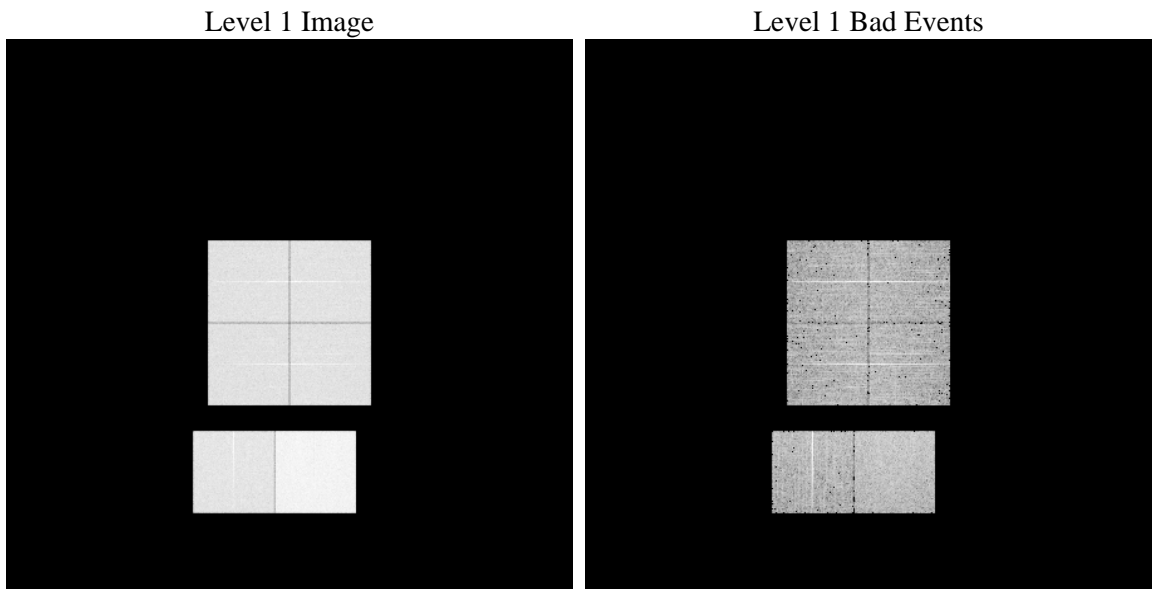
1 Front

seq_num	 	Sequence number
obs_id	60790	Observation id
title	ACIS-012367 diagnostics	Proposal title
observer	CHANDRA engineering request/realtime commanding	Principal investig
object	 	Source name
dtycle	0	
cycle	P	events from which exps? Prim/Second/Both
ra_targ	0.0	Observer's specified target RA [deg]
dec_targ	0.0	Observer's specified target Dec [deg]
ra_nom	326.00189923937	Nominal RA [deg]
dec_nom	52.028566899557	Nominal Dec [deg]
roll_nom	54.767975634159	Nominal Roll [deg]
revision	3	Processing version of data
ontime	8438.3999685645	Sum of GTIs [s]
livetime	8331.5478671681	Livetime [s]
ontime0	4733.9779200852	Sum of GTIs [s]
ontime1	4844.368445605	Sum of GTIs [s]
ontime2	4523.5523763001	Sum of GTIs [s]
ontime3	4662.75102368	Sum of GTIs [s]
ontime6	5038.6294206977	Sum of GTIs [s]
ontime7	8438.3999685645	Sum of GTIs [s]
l2events	1274562	Number of level 2 events

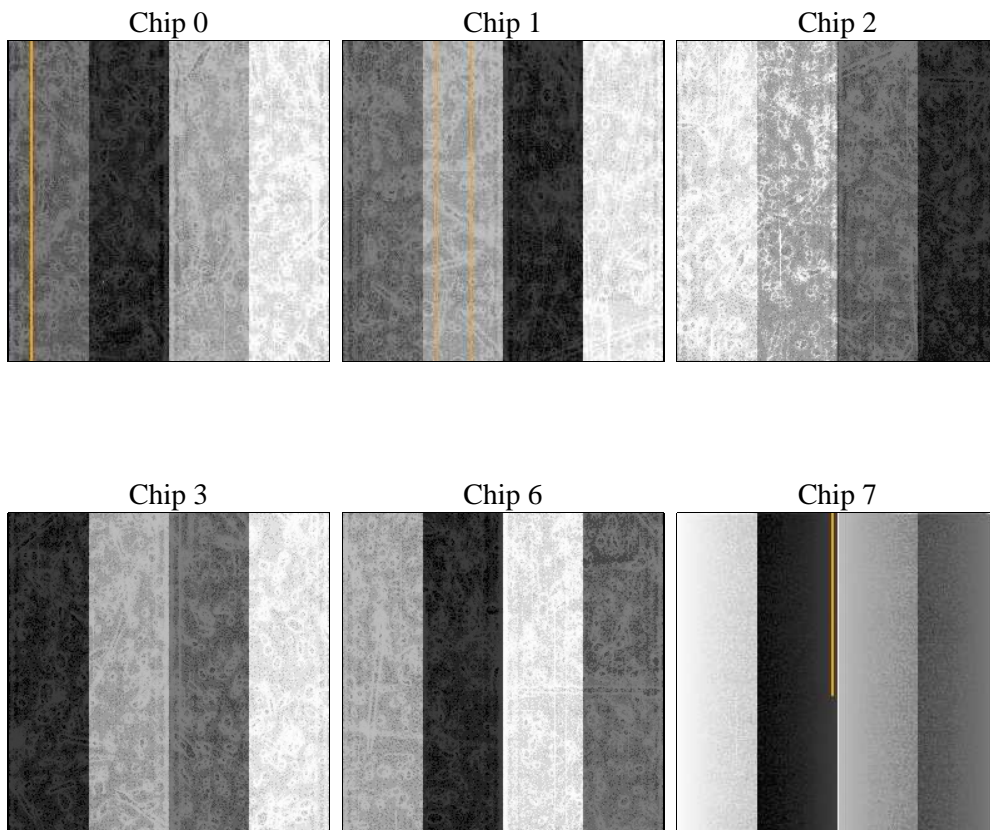
2 OBI

2.1 OBI

2.1.1 Images



2.1.2 Bias



2.1.3 Parameters

obi_num	1	Obi number	sched_exp_time	0.0	[s] Scheduled observation exposure time
ascdsver	8.4.5	Processing system revision	ontime	8438.3999685645	Sum of GTIs [s]
caldbver	4.5.2	 	ontime0	4733.9779200852	Sum of GTIs [s]
date	2012-10-26T01:54:49	Date and time of file creation	ontime1	4844.368445605	Sum of GTIs [s]
revision	3	Processing version of data	ontime2	4523.5523763001	Sum of GTIs [s]
			ontime3	4662.75102368	Sum of GTIs [s]
			ontime6	5038.6294206977	Sum of GTIs [s]
			ontime7	8438.3999685645	Sum of GTIs [s]
			l1events	1544373	Number of level 1 events

2.1.4 Events

	ccd 0	ccd 1	ccd 2	ccd 3	ccd 6	ccd 7		ccd 0	ccd 1	ccd 2	ccd 3	ccd 6	ccd 7
level 1 events	222048	227128	217291	223811	248439	405656	grade 0 events	105460	107626	104069	107101	115763	89609
rejected events	31268	32214	32076	34029	35878	46141		47%	47%	47%	47%	46%	22%
rejected %	14%	14%	14%	15%	14%	11%	grade 1 events	583	525	647	616	590	237
								0%	0%	0%	0%	0%	0%
							grade 2 events	33323	34329	31377	32548	36717	79342
								15%	15%	14%	14%	14%	19%
							grade 3 events	12427	12088	12156	12204	13312	36431
								5%	5%	5%	5%	5%	8%
							grade 4 events	12348	12541	12134	12493	13355	36226
								5%	5%	5%	5%	5%	8%
							grade 5 events	2113	2187	1991	2280	2381	8686
								0%	0%	0%	1%	0%	2%
							grade 6 events	27895	28858	26011	26107	34091	119072
								12%	12%	11%	11%	13%	29%
							grade 7 events	27899	28974	28906	30462	32230	36053
								12%	12%	13%	13%	12%	8%

2.2 Compared Parameters

Parameter	Planned	Actual	Parameter	Planned	Actual
Instrument	ACIS	ACIS	Obspar format version number	7	7
Detector	ACIS-012367	ACIS-012367	Obspar file type	PREDICTED	ACTUAL
Grating	NONE	NONE	Obspar update status	NONE	UPDATED
Data mode	FAINT	FAINT	On-chip summing requested	N	N
Observation mode	SECONDARY	SECONDARY	Subarray requested	NONE	NONE
[deg] Pointing RA	0	326.0018992393678	Alternating exposures requested	N	N
[deg] Pointing Dec	0	52.02856689955706	[s] Primary exposure time	0.000000	3.2
[deg] Pointing Roll	0.0	54.76797563415873			
[mm] SIM focus pos	-0.782348	-0.7809083437167272			
[mm] SIM defocus	0	0.7524282956875696			
[mm] SIM translation stage pos	-233.592463	250.466033080201			
[mm] SIM translation stage offset	0	-0.01005468664627074			
[s] Observation start time (MET)	165665829.473764	165665828.44905			
Observation start date	2003-04-02T10:17:09	2003-04-02T10:17:08			
[s] Observation end time (MET)	165687807.524691	165687806.49997			
Observation end date	2003-04-02T16:23:28	2003-04-02T16:23:26			
Read mode	TIMED	TIMED			

2.3 Star Slots

2.4 FID Slots

A Summary

A.1 Status

V&V Scientist	Beth Sundheim
V&V Date (YYYY-MM-DD)	2012.12.04
V&V Edition	1
V&V Disposition and Status	OK
V&V Charge Time	8.4383999685645

A.2 Comments