

V&V Reference Report

L2 ASCDS Version : 8.5.1.1

Observation 6100 - L2 Version 3
Chandra X-Ray Center

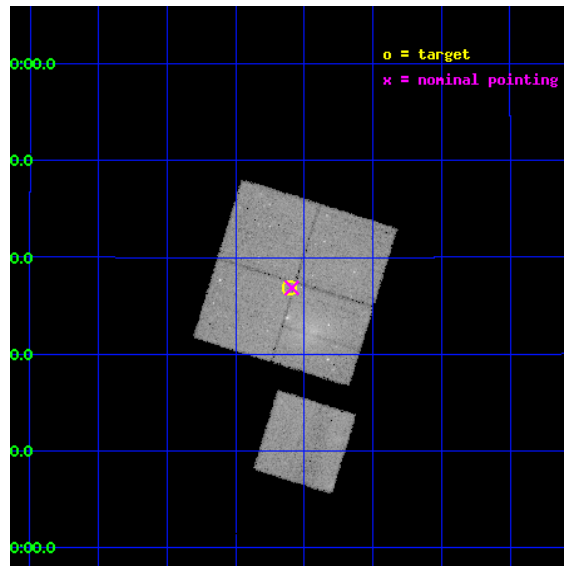
L2 Processing Date : Dec 21 2012

Contents

1	Front	2
2	OBI	3
2.1	OBI	3
2.1.1	Images	3
2.1.2	Bias	3
2.1.3	Parameters	4
2.1.4	Events	4
2.2	Compared Parameters	5
2.3	Aspect	6
2.4	Star Slots	9
2.4.1	Slot 3	9
2.4.2	Slot 4	10
2.4.3	Slot 5	11
2.4.4	Slot 6	12
2.4.5	Slot 7	13
2.5	FID Slots	14
2.5.1	Slot 0	14
2.5.2	Slot 1	15
2.5.3	Slot 2	16
A	Summary	17
A.1	Status	17
A.2	Comments	17

1 Front

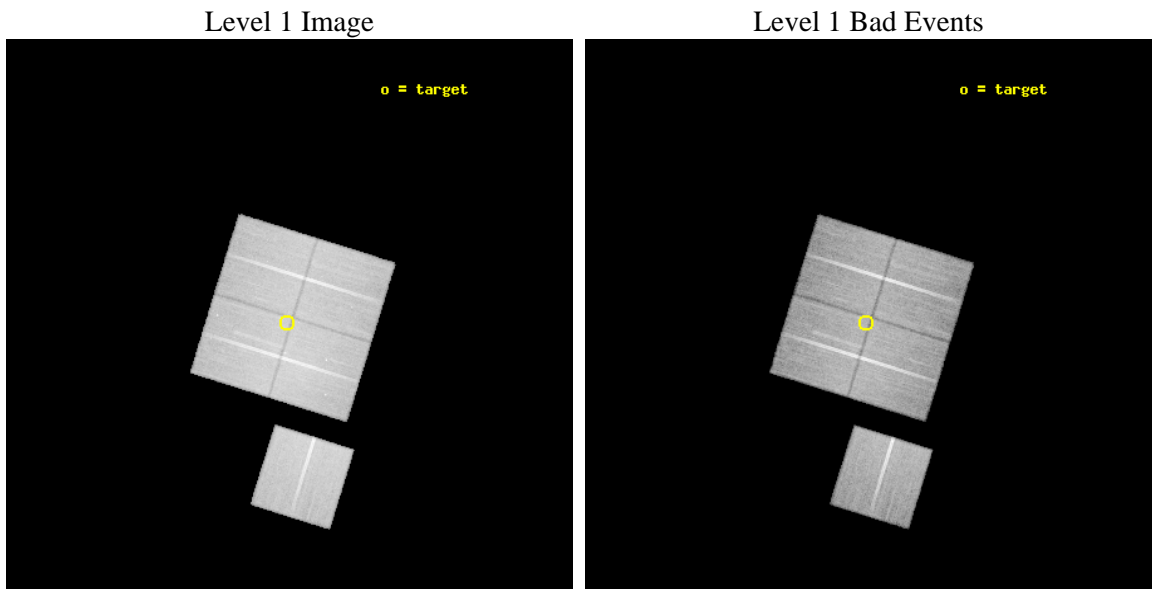
seq_num	800548	Sequence number
obs_id	6100	Observation id
title	A Chandra Study of the Unusual Galaxy Cluster A1569	Proposal title
observer	Dr. Stephen Murray	Principal investigator
object	Abell 1569	Source name
dtycycle	0	
cycle	P	events from which exps? Prim/Second/Both
ra_targ	189.15247	Observer's specified target RA [deg]
dec_targ	16.613885	Observer's specified target Dec [deg]
ra_nom	189.14764531336	Nominal RA [deg]
dec_nom	16.614332840575	Nominal Dec [deg]
roll_nom	197.27626506267	Nominal Roll [deg]
revision	3	Processing version of data
ontime	41753.108253807	Sum of GTIs [s]
livetime	41207.57315628	Livetime [s]
ontime0	41749.84414354	Sum of GTIs [s]
ontime1	41753.0261738	Sum of GTIs [s]
ontime2	41746.785233319	Sum of GTIs [s]
ontime3	41753.108253807	Sum of GTIs [s]
ontime6	41752.944093794	Sum of GTIs [s]
l2events	182253	Number of level 2 events



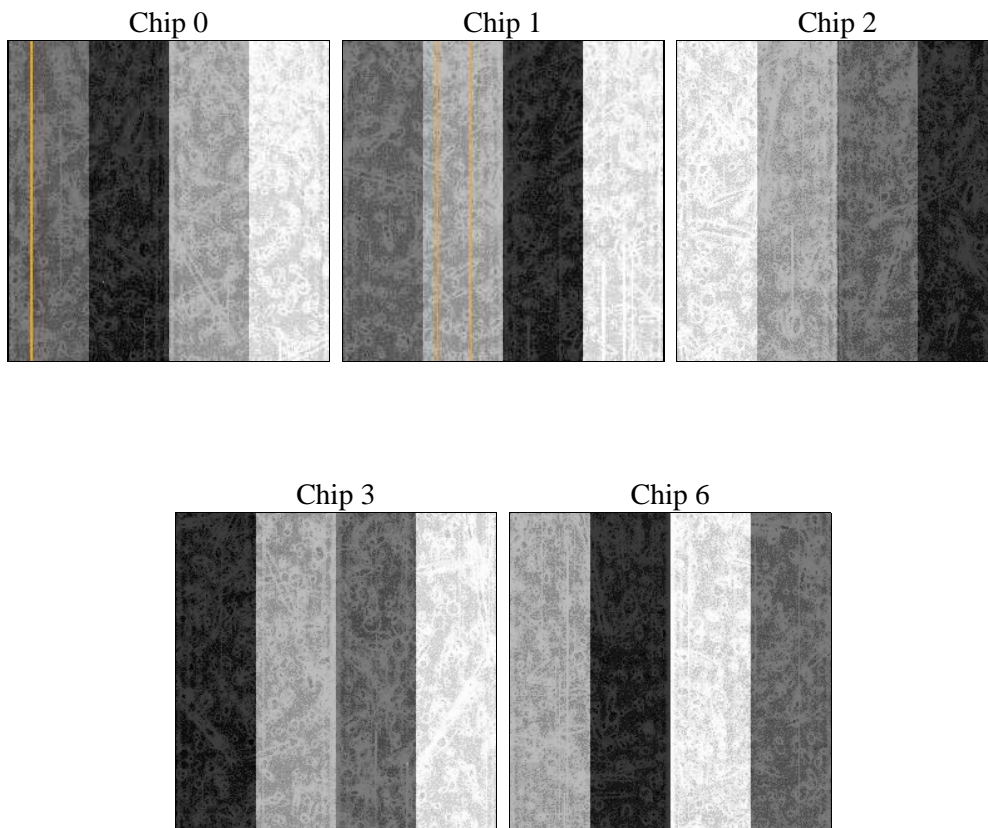
2 OBI

2.1 OBI

2.1.1 Images



2.1.2 Bias



2.1.3 Parameters

obi_num	1	Obi number	sched_exp_time	41700.000000	[s] Scheduled observation exposure time
ascdsver	8.5.1.1	Processing system revision	ontime	41753.108253807	Sum of GTIs [s]
caldbver	4.5.5	 	ontime0	41749.84414354	Sum of GTIs [s]
date	2012-12-21T22:44:00	Date and time of file creation	ontime1	41753.0261738	Sum of GTIs [s]
revision	3	Processing version of data	ontime2	41746.785233319	Sum of GTIs [s]
			ontime3	41753.108253807	Sum of GTIs [s]
			ontime6	41752.944093794	Sum of GTIs [s]
			l1events	1548355	Number of level 1 events

2.1.4 Events

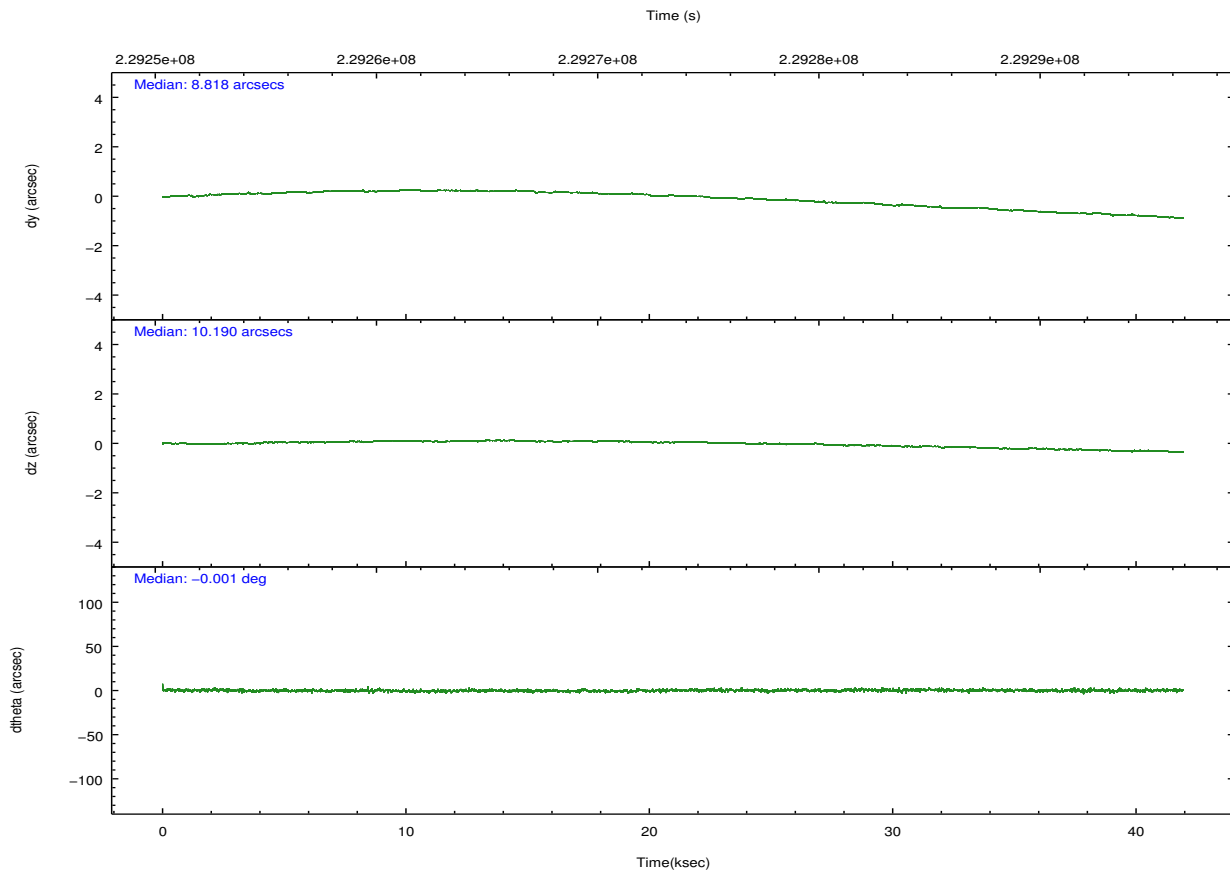
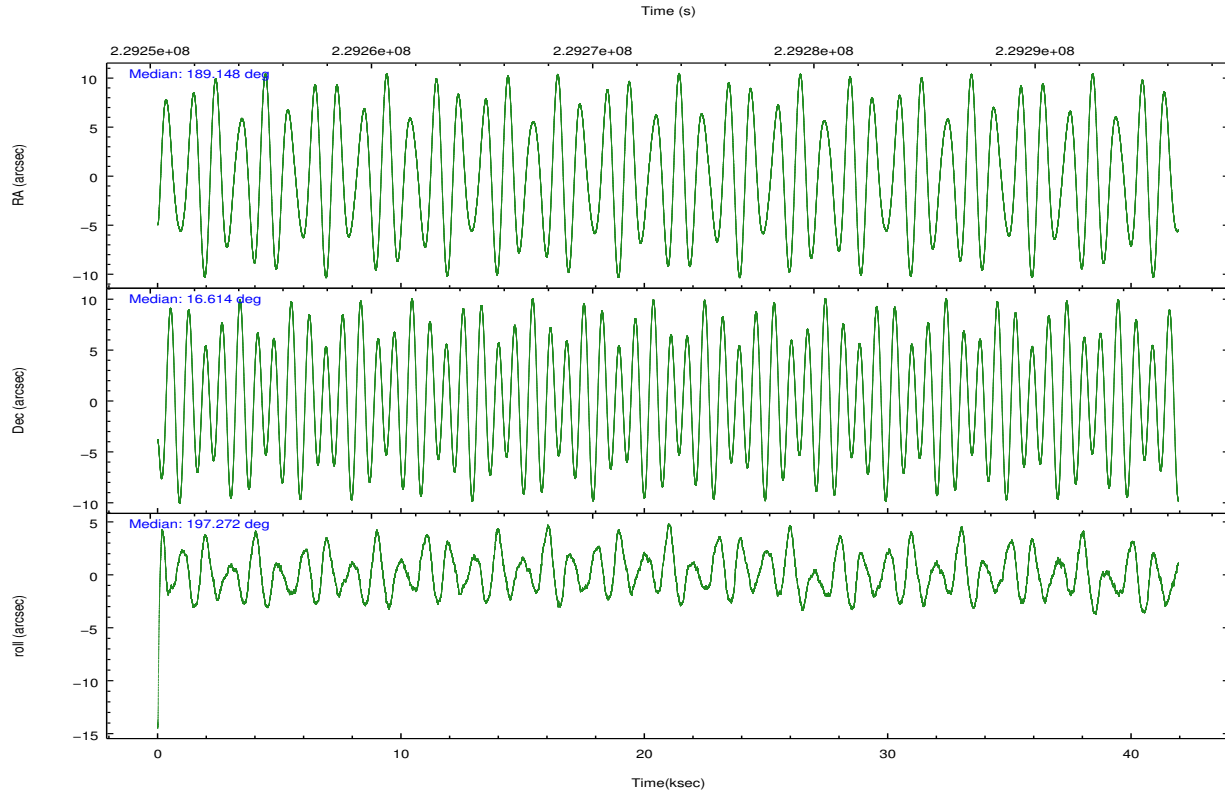
	ccd 0	ccd 1	ccd 2	ccd 3	ccd 6
level 1 events	295116	293816	330689	311704	317030
rejected events	253940	253045	278760	273094	279443
rejected %	86%	86%	84%	87%	88%

	ccd 0	ccd 1	ccd 2	ccd 3	ccd 6
grade 0 events	18808	16214	28717	17254	15036
	6%	5%	8%	5%	4%
grade 1 events	163	142	256	180	155
	0%	0%	0%	0%	0%
grade 2 events	8452	8989	8983	7402	7809
	2%	3%	2%	2%	2%
grade 3 events	3884	3914	3819	3629	3629
	1%	1%	1%	1%	1%
grade 4 events	3599	3873	3893	3593	3618
	1%	1%	1%	1%	1%
grade 5 events	13231	13901	12612	14433	14293
	4%	4%	3%	4%	4%
grade 6 events	6433	7782	6519	6737	7499
	2%	2%	1%	2%	2%
grade 7 events	240546	239001	265890	258476	264991
	81%	81%	80%	82%	83%

2.2 Compared Parameters

Parameter	Planned	Actual	Parameter	Planned	Actual
Instrument	ACIS	ACIS	Obspar format version number	7	7
Detector	ACIS-01236	ACIS-01236	Obspar file type	PREDICTED	ACTUAL
Grating	NONE	NONE	Obspar update status	NONE	UPDATED
Data mode	VFAINT	VFAINT	Number of optional ACIS chips dropped	0	0
Observation mode	POINTING	POINTING	On-chip summing requested	N	N
[deg] Pointing RA	189.166960	189.1476453133623	Subarray requested	NONE	NONE
[deg] Pointing Dec	16.634533	16.61433284057472	Alternating exposures requested	N	N
[deg] Pointing Roll	197.062061	197.276265062673	[s] Primary exposure time	0.000000	3.1
[mm] SIM focus pos	-0.782348	-0.7809083437167272			
[mm] SIM defocus	0	0.001439871863259334			
[mm] SIM translation stage pos	-233.592463	-233.5874344608287			
[mm] SIM translation stage offset	0	-0.005018542100998502			
[s] Observation start time (MET)	229252681.184000	229251722.6388			
Observation start date	2005-04-07T09:16:57	2005-04-07T09:02:02			
[s] Observation end time (MET)	229294381.184000	229295039.14077			
Observation end date	2005-04-07T20:51:57	2005-04-07T21:03:59			
Read mode	TIMED	TIMED			

2.3 Aspect

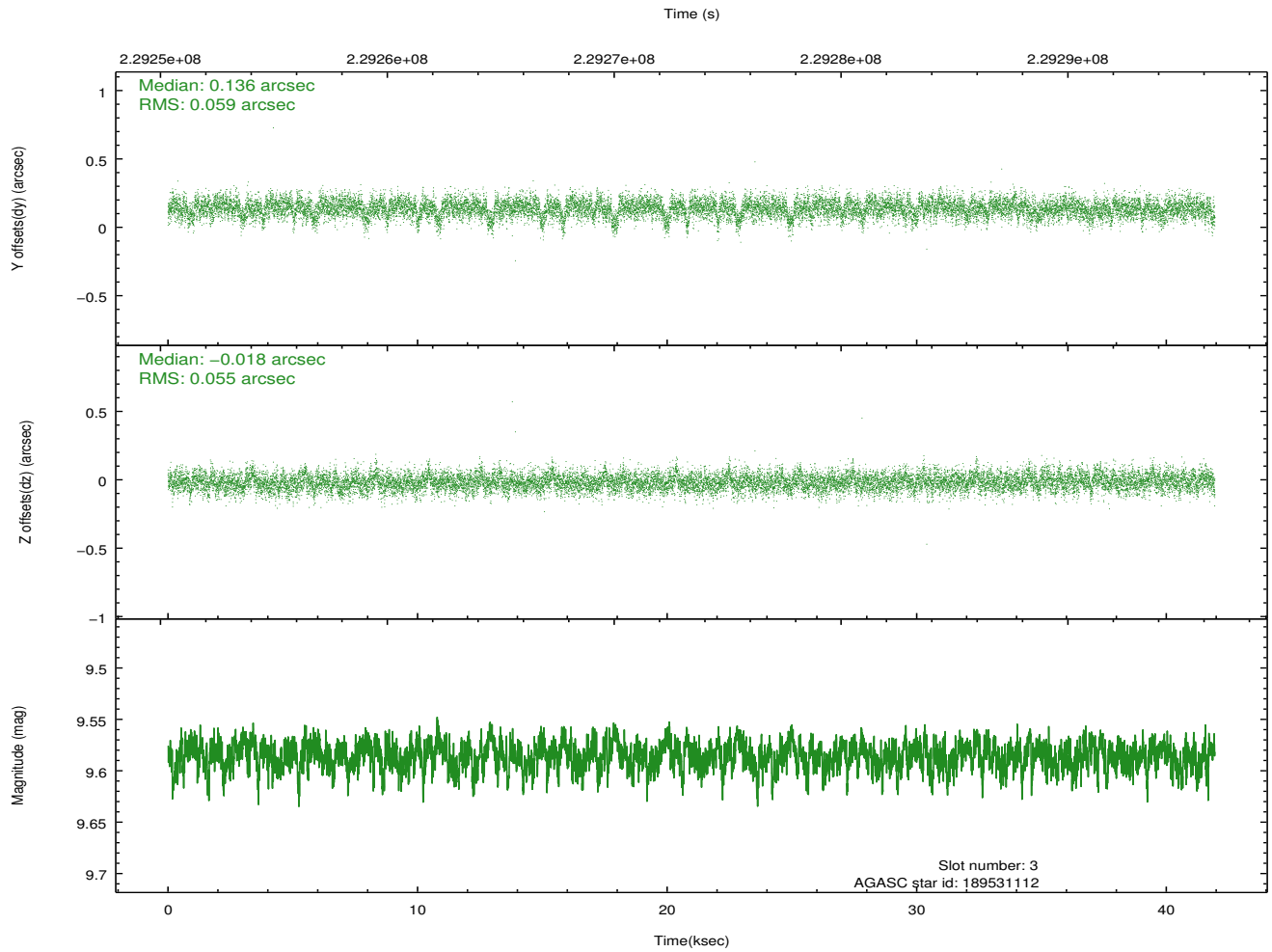
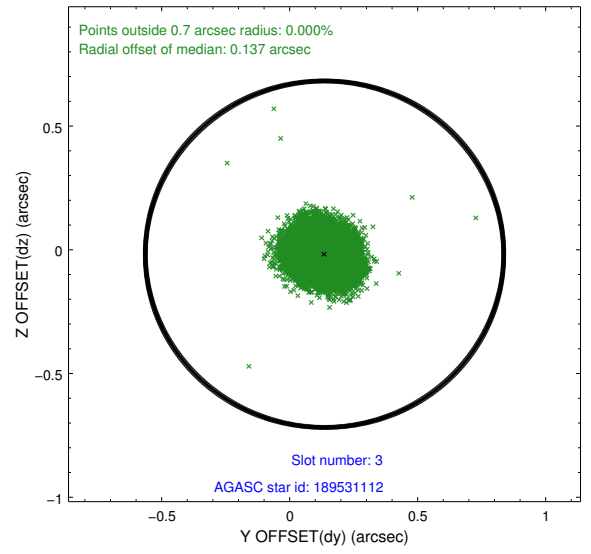
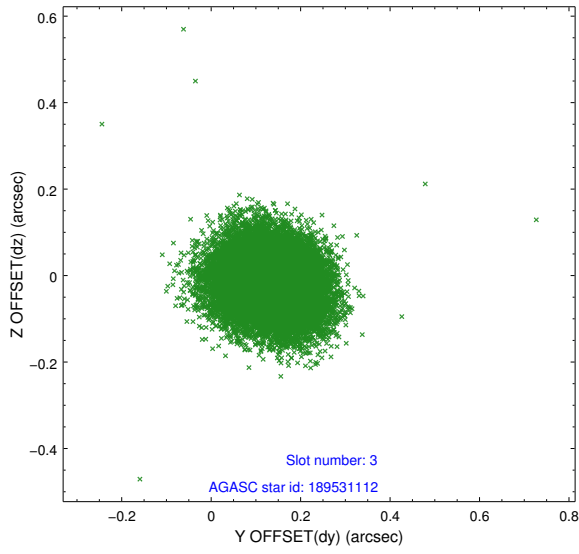


Slot Statistics

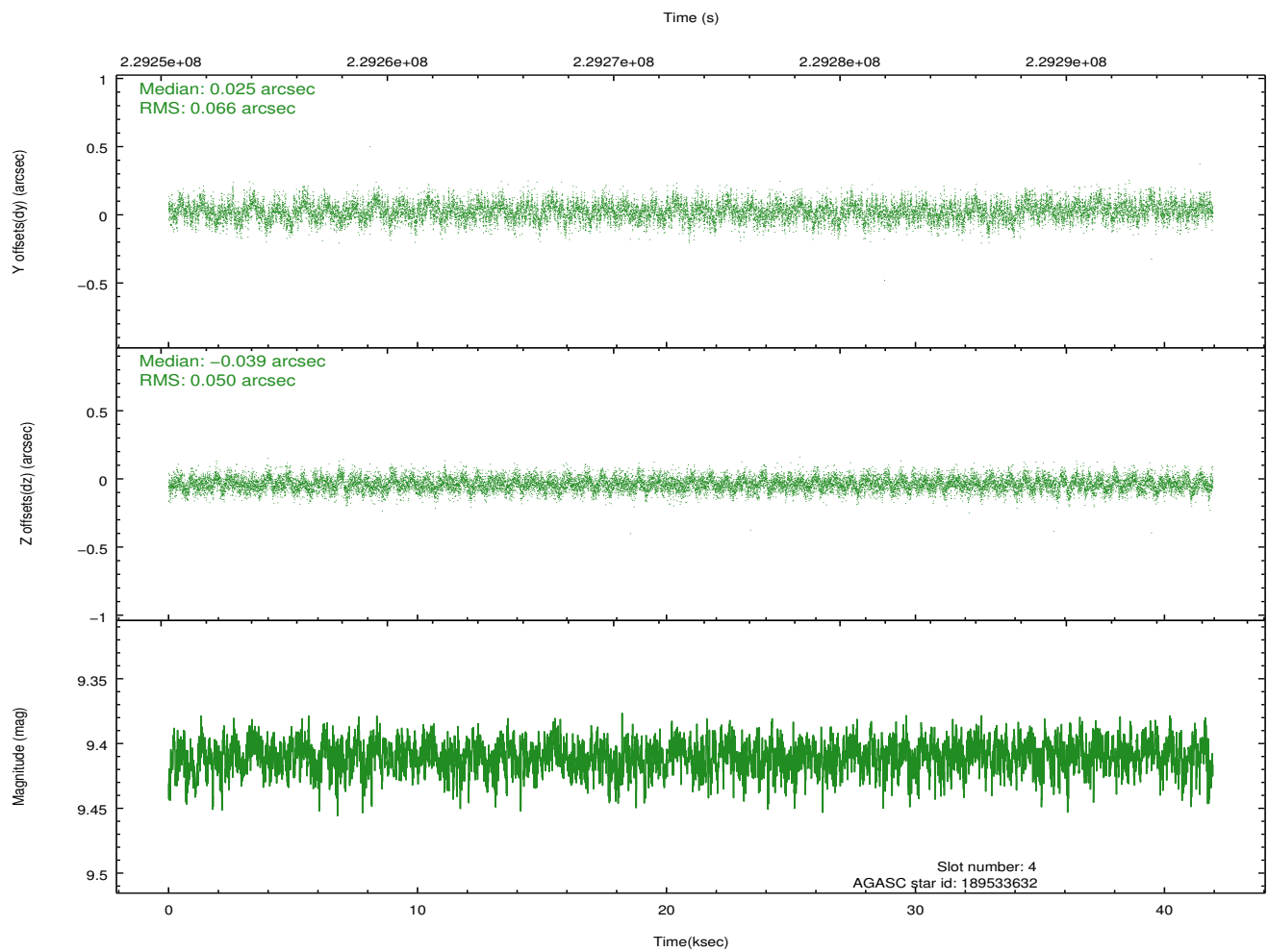
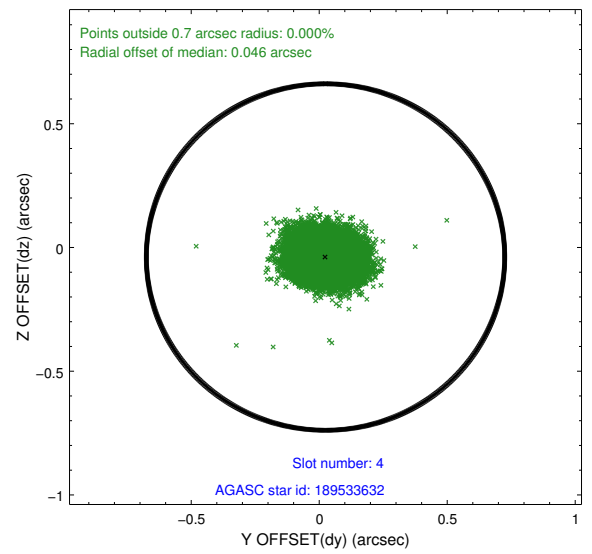
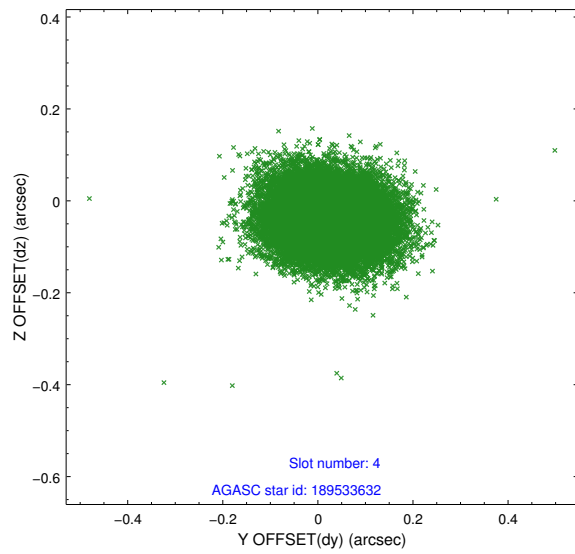
slot	status	id	mag	n_pts	med_dy	med_dz	dr1	dr2	ra	dec	mean_y	mean_z
0	FID	ACIS-I-1	7.24	10231	-0.043	0.071	0.017	0.028	0.000000	0.000000	930.88	-833.57
1	FID	ACIS-I-2	7.14	10229	-0.160	-0.091	0.013	0.023	0.000000	0.000000	-763.31	-840.14
2	FID	ACIS-I-4	7.17	10231	0.105	0.087	0.009	0.016	0.000000	0.000000	2150.97	1066.21
3	GUIDE	189531112	9.59	20441	0.136	-0.018	0.085	0.140	189.744251	16.502335	-1765.93	1037.07
4	GUIDE	189533632	9.41	20445	0.025	-0.039	0.087	0.143	188.646001	16.426664	1938.69	185.85
5	GUIDE	189535528	9.21	20443	0.003	0.042	0.093	0.153	188.943906	16.829854	528.82	-897.63
6	GUIDE	189537488	7.76	20461	-0.129	0.007	0.056	0.089	189.788372	16.479780	-1887.82	1158.80
7	GUIDE	189540176	9.24	20441	-0.035	0.005	0.080	0.134	189.801571	16.510067	-1963.23	1067.86

2.4 Star Slots

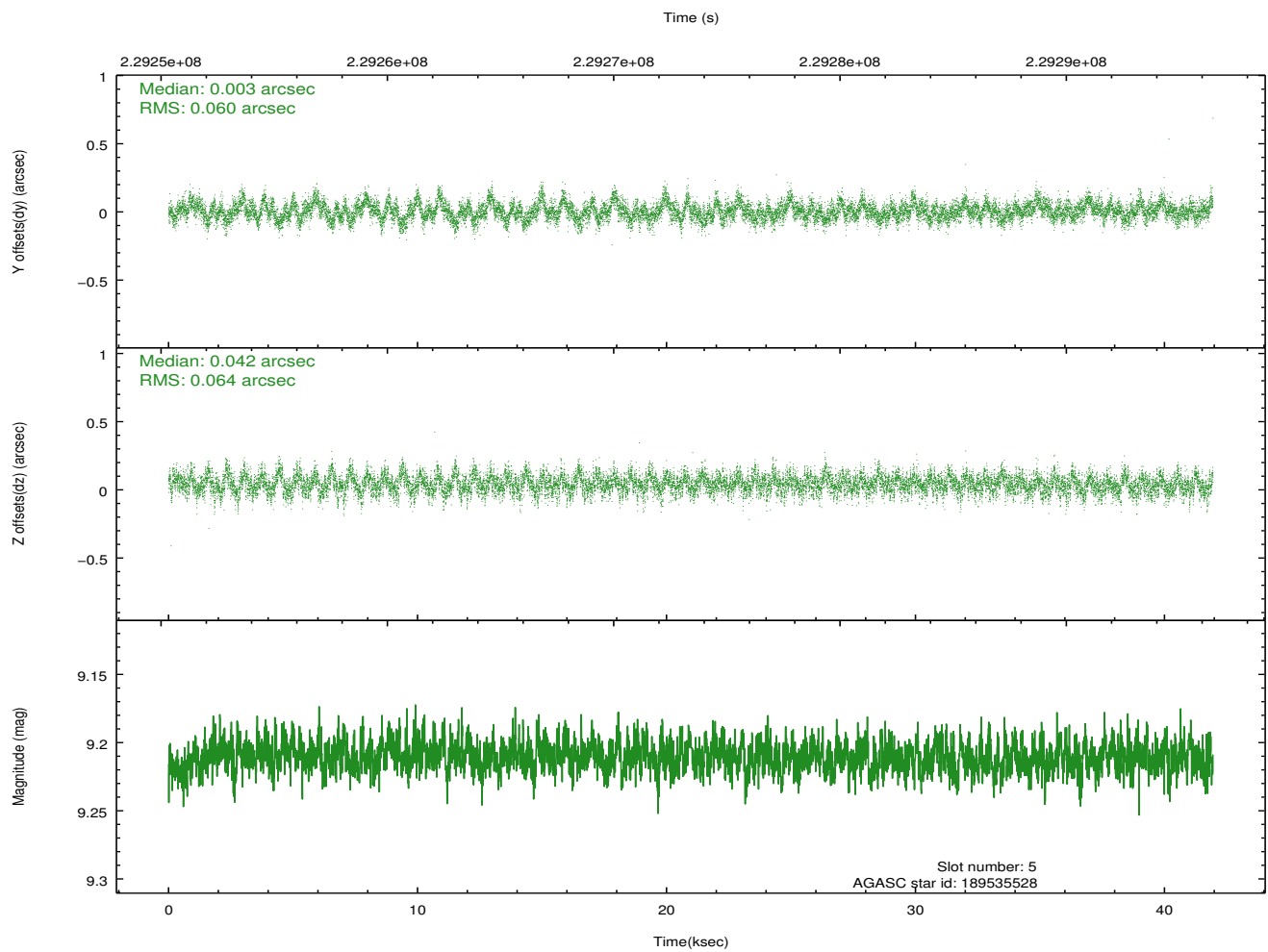
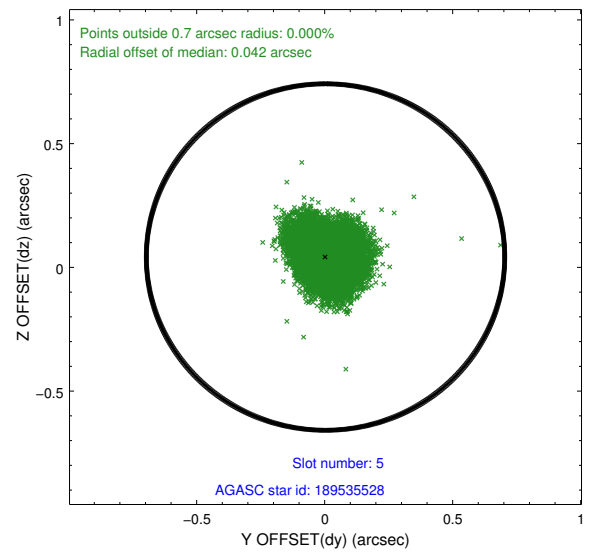
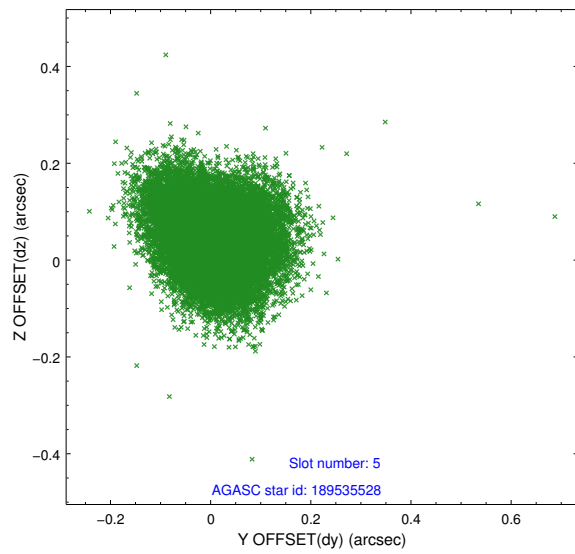
2.4.1 Slot 3



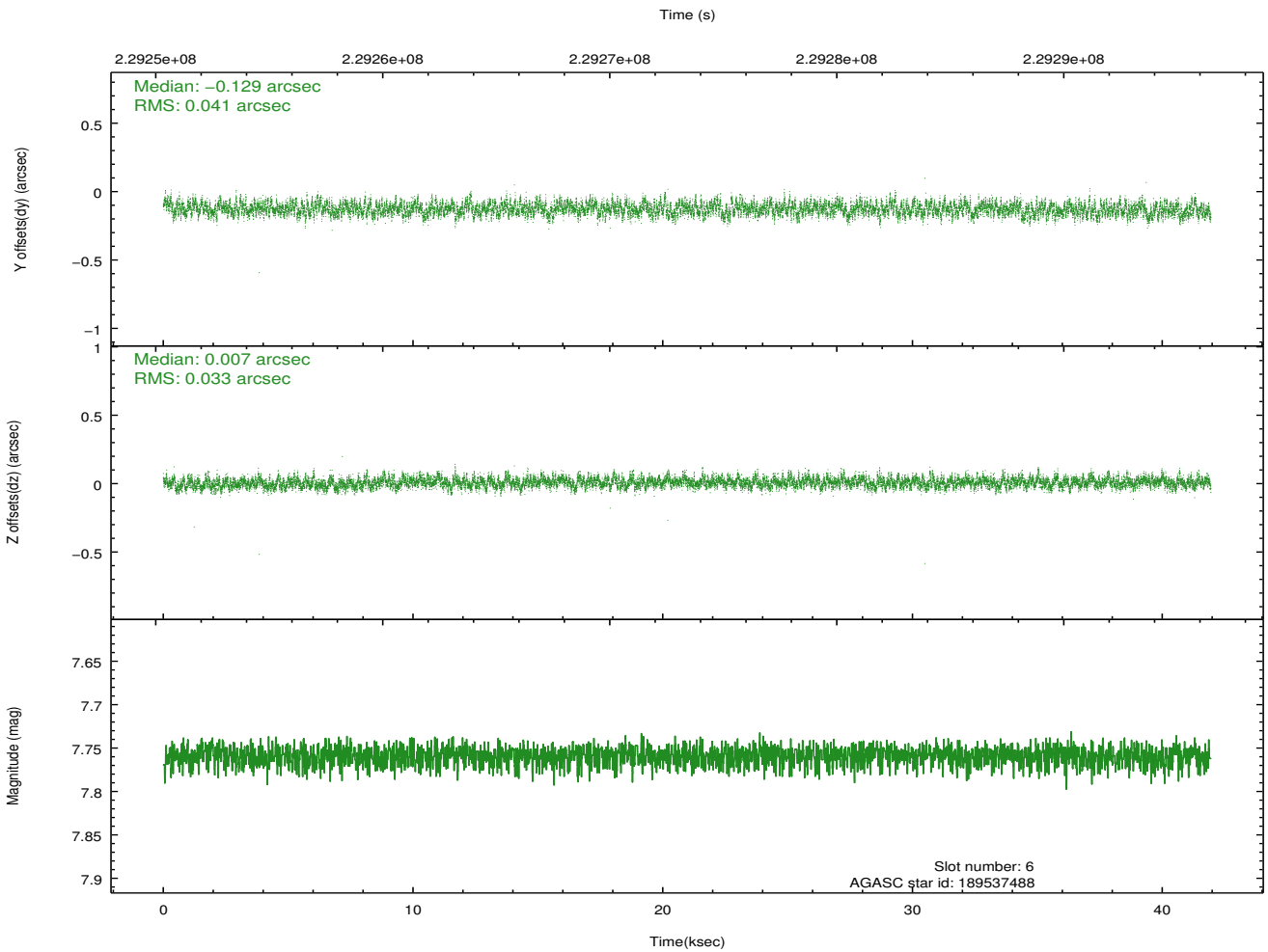
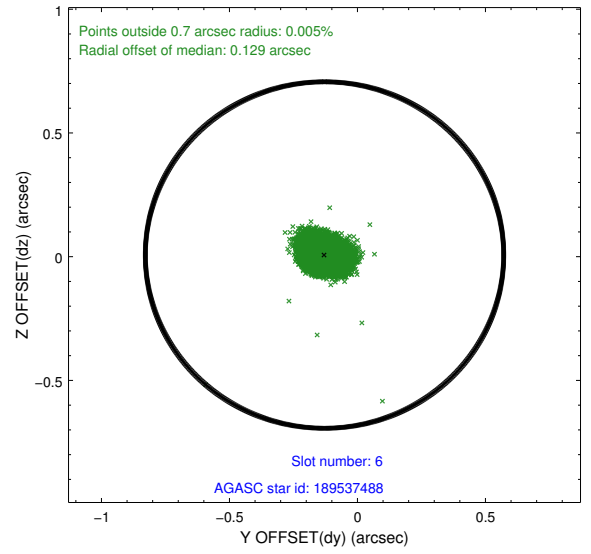
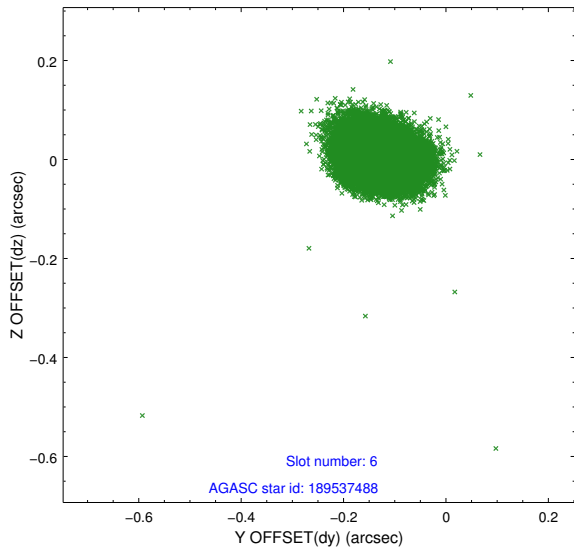
2.4.2 Slot 4



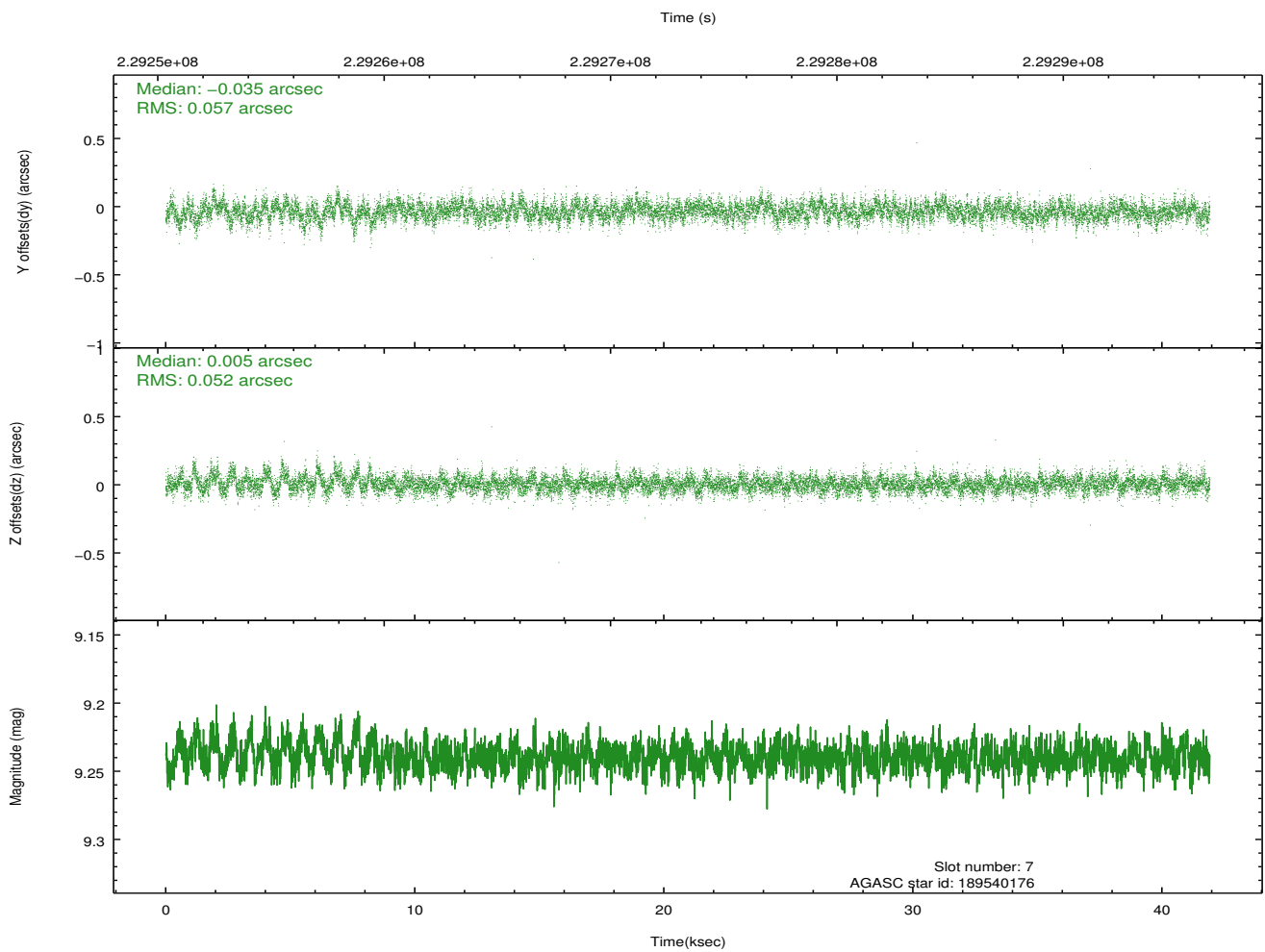
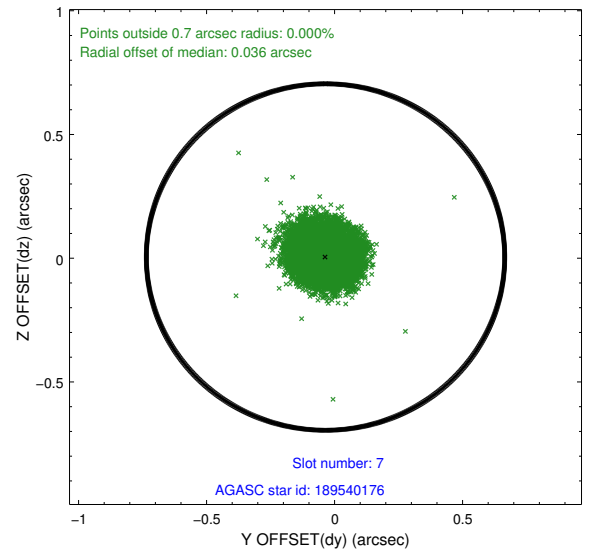
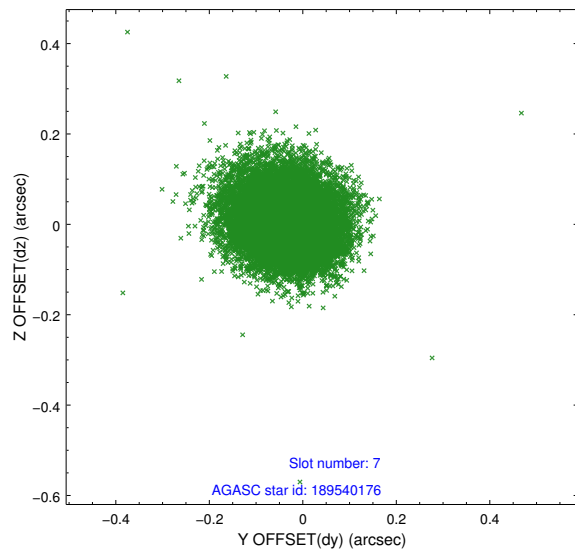
2.4.3 Slot 5



2.4.4 Slot 6

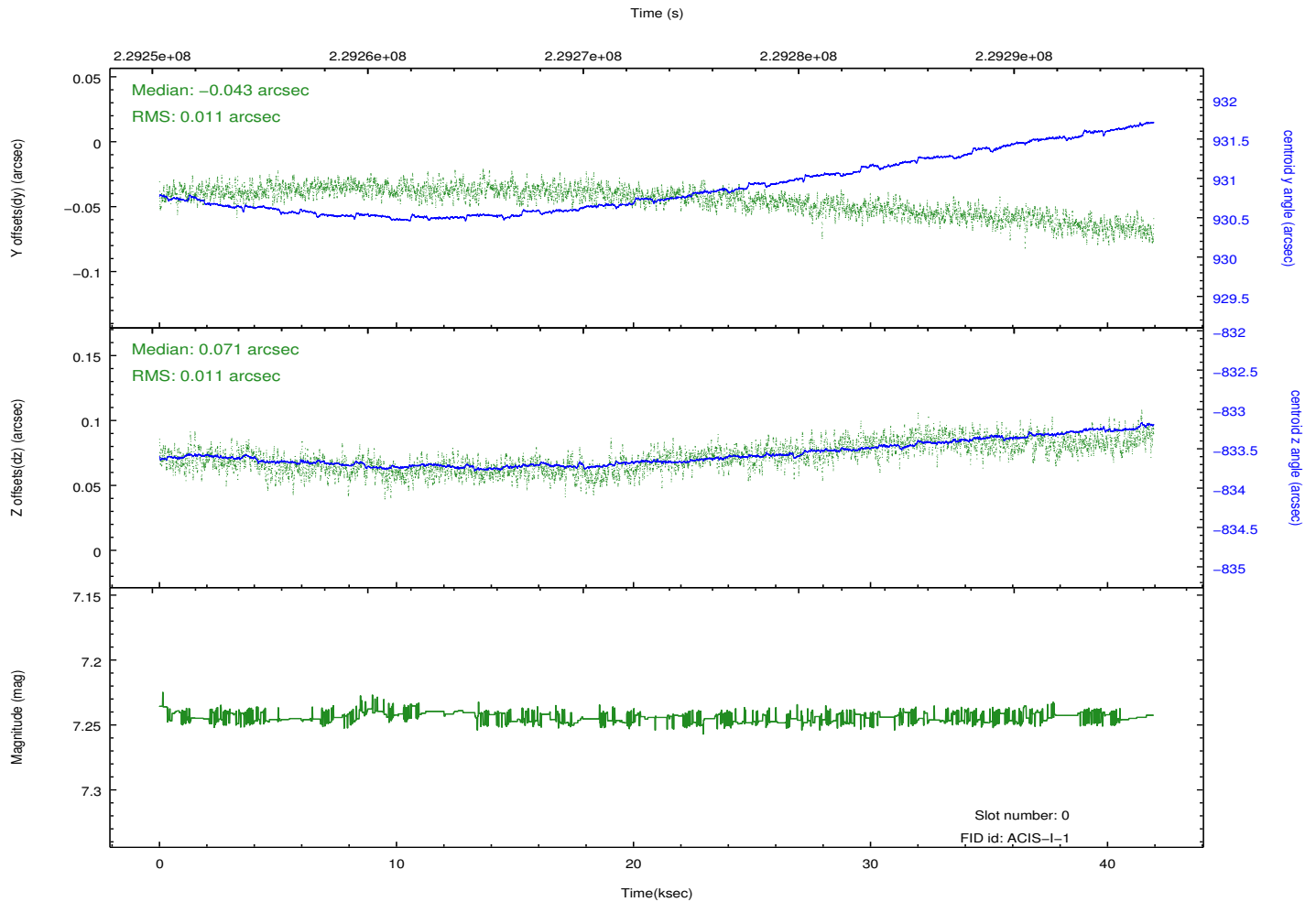
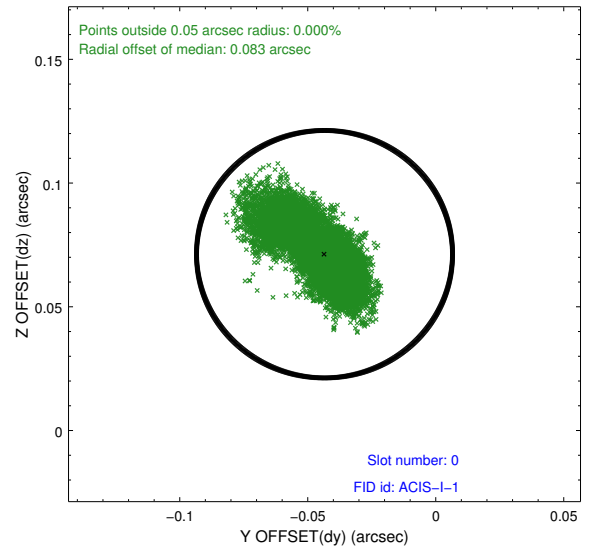
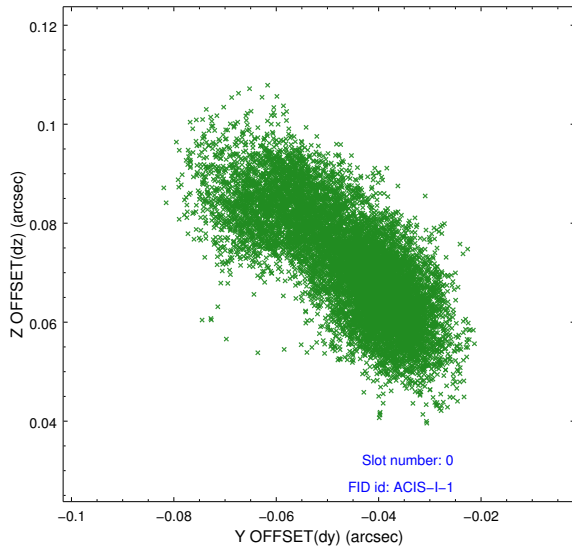


2.4.5 Slot 7

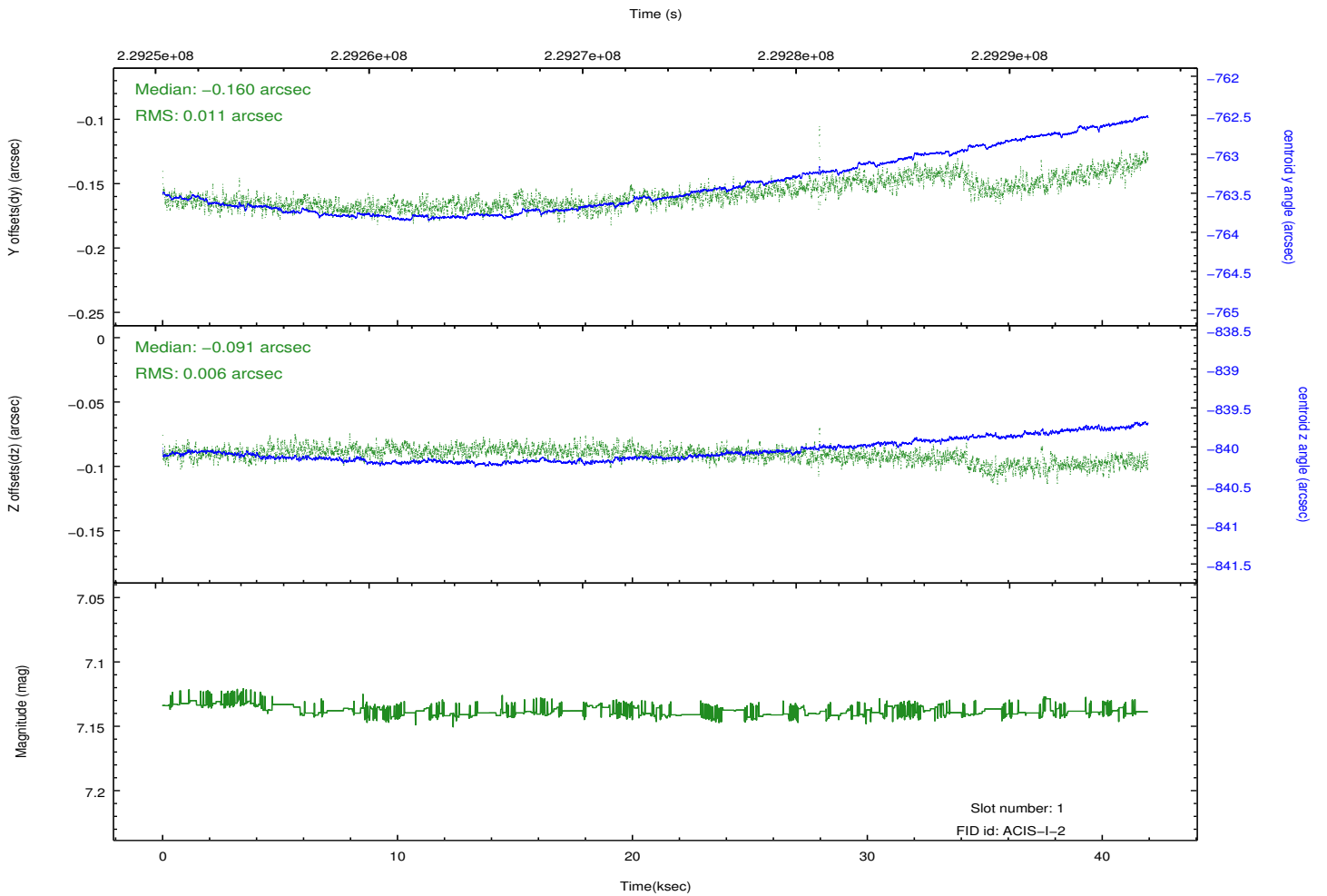
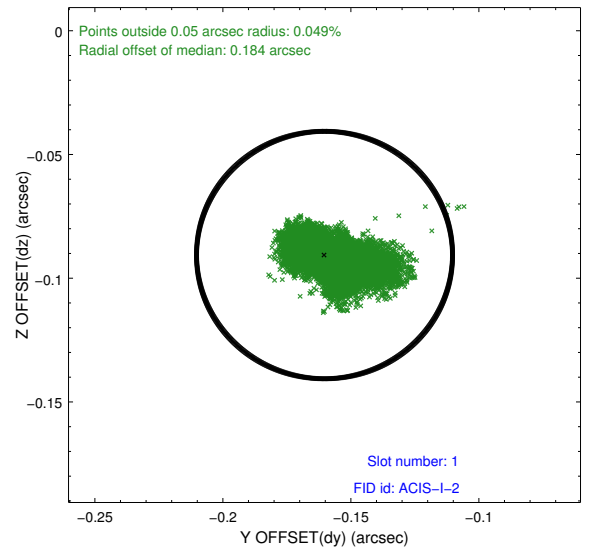
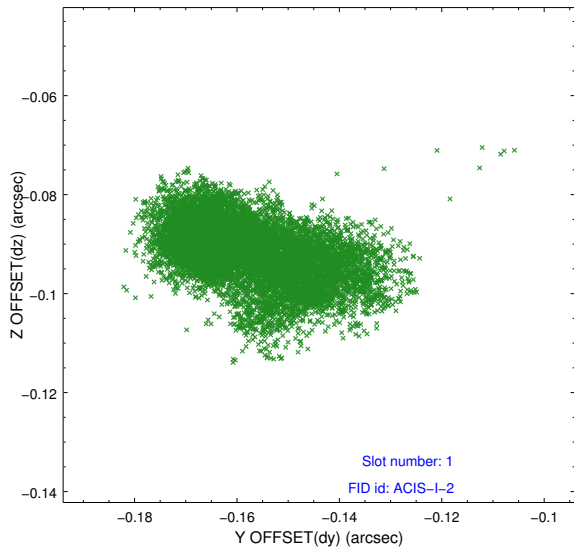


2.5 FID Slots

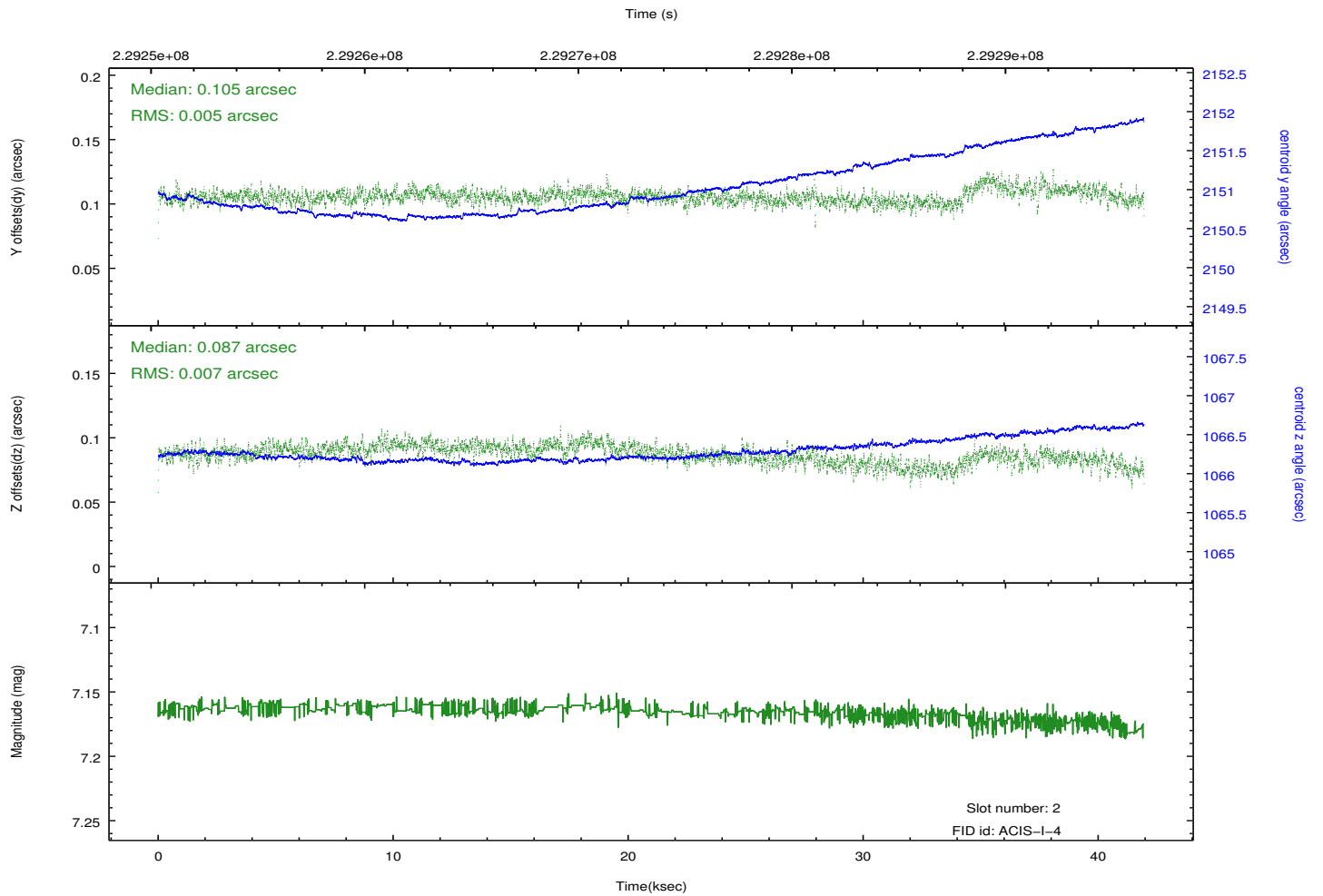
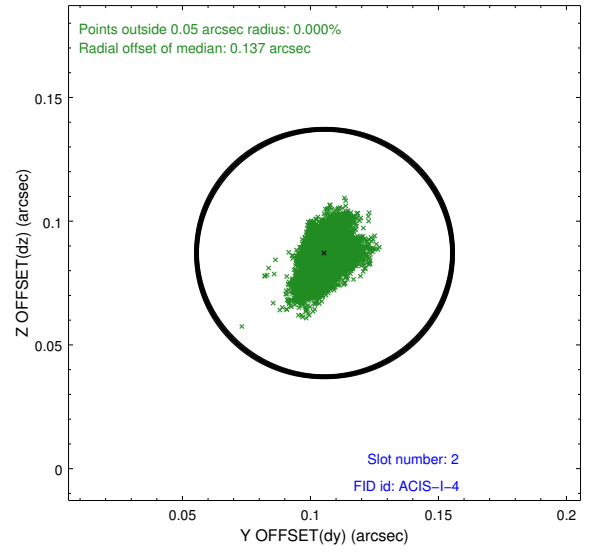
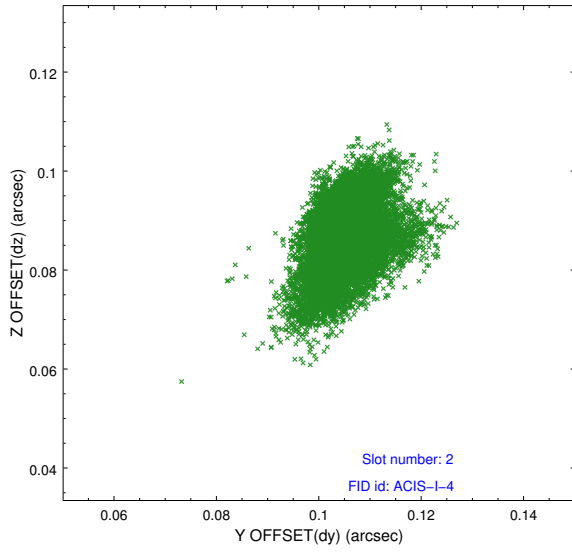
2.5.1 Slot 0



2.5.2 Slot 1



2.5.3 Slot 2



A Summary

A.1 Status

V&V Scientist	Jen Lauer
V&V Date (YYYY-MM-DD)	2013.01.14
V&V Edition	1
V&V Disposition and Status	OK
V&V Charge Time	41.75389

A.2 Comments