

V&V Reference Report

L2 ASCDS Version : 8.4.5

Observation 61240 - L2 Version 3
Chandra X-Ray Center

L2 Processing Date : Oct 4 2012

Contents

1	Front	2
2	OBI	3
2.1	OBI	3
2.1.1	Images	3
2.1.2	Bias	3
2.1.3	Parameters	4
2.1.4	Events	4
2.2	Compared Parameters	5
2.3	Star Slots	6
2.4	FID Slots	6
A	Summary	7
A.1	Status	7
A.2	Comments	7

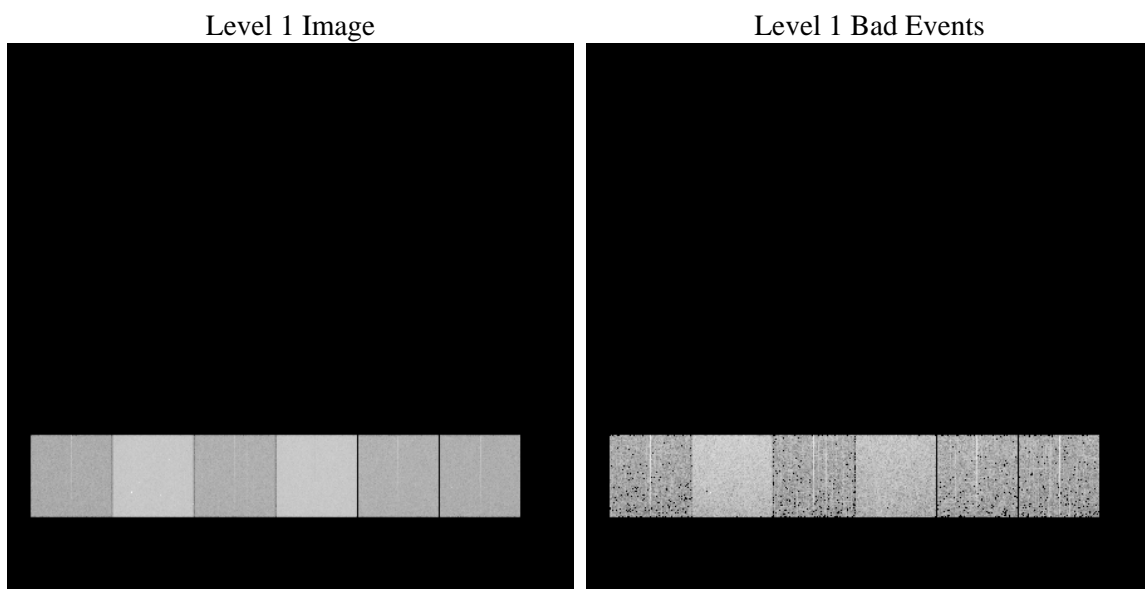
1 Front

seq_num	 	Sequence number
obs_id	61240	Observation id
title	ACIS-456789 diagnostics	Proposal title
observer	CHANDRA engineering request/realtime commanding	Principal investig
object	 	Source name
dtycycle	0	
cycle	P	events from which exps? Prim/Second/Both
ra_targ	0.0	Observer's specified target RA [deg]
dec_targ	0.0	Observer's specified target Dec [deg]
ra_nom	165.03289235949	Nominal RA [deg]
dec_nom	-35.009614326424	Nominal Dec [deg]
roll_nom	307.53705272586	Nominal Roll [deg]
revision	3	Processing version of data
ontime	6777.6166869998	Sum of GTIs [s]
livetime	6691.7944235182	Livetime [s]
ontime4	2493.0202773213	Sum of GTIs [s]
ontime5	7292.9316084683	Sum of GTIs [s]
ontime6	2710.1697475016	Sum of GTIs [s]
ontime7	6777.6166869998	Sum of GTIs [s]
ontime8	2809.7139905393	Sum of GTIs [s]
ontime9	2640.9749698937	Sum of GTIs [s]
l2events	1223883	Number of level 2 events

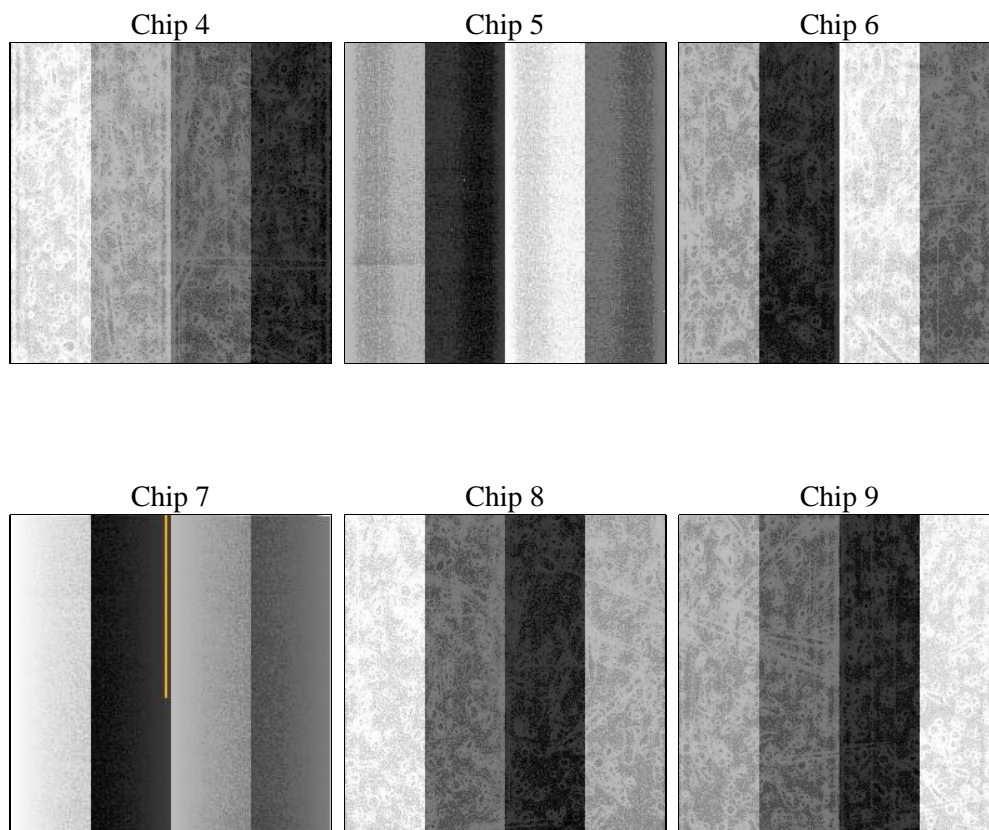
2 OBI

2.1 OBI

2.1.1 Images



2.1.2 Bias



2.1.3 Parameters

obi_num	2	Obi number	sched_exp_time	0.0	[s] Scheduled observation exposure time
ascdsver	8.4.5	Processing system revision	ontime	6777.6166869998	Sum of GTIs [s]
caldbver	4.5.2	 	ontime4	2493.0202773213	Sum of GTIs [s]
date	2012-10-05T01:21:28	Date and time of file creation	ontime5	7292.9316084683	Sum of GTIs [s]
revision	3	Processing version of data	ontime6	2710.1697475016	Sum of GTIs [s]
			ontime7	6777.6166869998	Sum of GTIs [s]
			ontime8	2809.7139905393	Sum of GTIs [s]
			ontime9	2640.9749698937	Sum of GTIs [s]
			l1events	1448756	Number of level 1 events

2.1.4 Events

	ccd 4	ccd 5	ccd 6	ccd 7	ccd 8	ccd 9		ccd 4	ccd 5	ccd 6	ccd 7	ccd 8	ccd 9
level 1 events	145392	396435	168293	403781	176150	158705	grade 0 events	70840	84795	80254	93024	84490	75443
rejected events	20383	50232	21367	37090	22864	20670		48%	21%	47%	23%	47%	47%
rejected %	14%	12%	12%	9%	12%	13%	grade 1 events	374	329	372	251	423	364
								0%	0%	0%	0%	0%	0%
							grade 2 events	22148	122084	25561	81839	27049	24422
								15%	30%	15%	20%	15%	15%
							grade 3 events	7673	22646	9179	37644	9837	8593
								5%	5%	5%	9%	5%	5%
							grade 4 events	7802	22490	9004	37228	9759	8711
								5%	5%	5%	9%	5%	5%
							grade 5 events	1293	9253	1572	7473	1718	1464
								0%	2%	0%	1%	0%	0%
							grade 6 events	16722	94321	23092	117137	22151	20866
								11%	23%	13%	29%	12%	13%
							grade 7 events	18540	40517	19259	29185	20723	18842
								12%	10%	11%	7%	11%	11%

2.2 Compared Parameters

Parameter	Planned	Actual	Parameter	Planned	Actual
Instrument	ACIS	ACIS	Obspar format version number	7	7
Detector	ACIS-456789	ACIS-456789	Obspar file type	PREDICTED	ACTUAL
Grating	NONE	NONE	Obspar update status	NONE	UPDATED
Data mode	FAINT	FAINT	On-chip summing requested	N	N
Observation mode	SECONDARY	SECONDARY	Subarray requested	NONE	NONE
[deg] Pointing RA	0	165.0328923594923	Alternating exposures requested	N	N
[deg] Pointing Dec	0	-35.00961432642352	[s] Primary exposure time	0.000000	3.2
[deg] Pointing Roll	0.0	307.5370527258623			
[mm] SIM focus pos	-0.684267	-0.6828225247311905			
[mm] SIM defocus	0	0.8505141146731063			
[mm] SIM translation stage pos	-190.132523	250.466033080201			
[mm] SIM translation stage offset	0	-0.01005468664627074			
[s] Observation start time (MET)	134553211.885	134553210.86044			
Observation start date	2002-04-07T07:53:32	2002-04-07T07:53:30			
[s] Observation end time (MET)	134591081.537	134591080.51197			
Observation end date	2002-04-07T18:24:42	2002-04-07T18:24:40			
Read mode	TIMED	TIMED			

2.3 Star Slots

2.4 FID Slots

A Summary

A.1 Status

V&V Scientist	Beth Sundheim
V&V Date (YYYY-MM-DD)	2012.10.10
V&V Edition	1
V&V Disposition and Status	OK
V&V Charge Time	6.7776166869998

A.2 Comments