

V&V Reference Report

L2 ASCDS Version : 8.4.5

Observation 61470 - L2 Version 3
Chandra X-Ray Center

L2 Processing Date : Sep 24 2012

Contents

1	Front	2
2	OBI	3
2.1	OBI	3
2.1.1	Images	3
2.1.2	Bias	3
2.1.3	Parameters	4
2.1.4	Events	4
2.2	Compared Parameters	5
2.3	Star Slots	6
2.4	FID Slots	6
A	Summary	7
A.1	Status	7
A.2	Comments	7

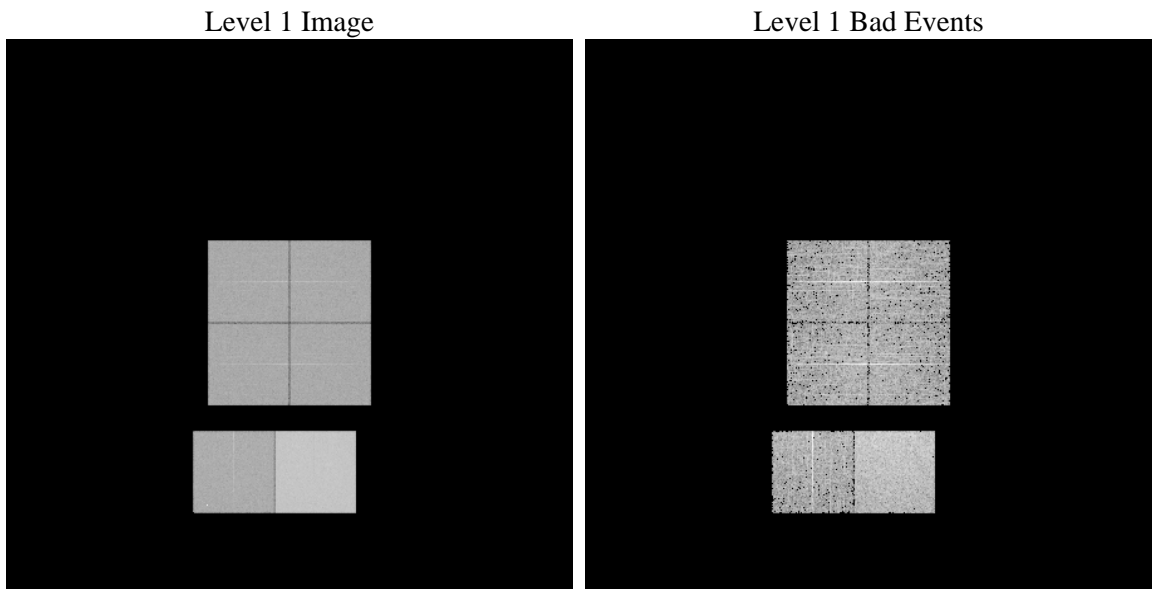
1 Front

seq_num	 	Sequence number
obs_id	61470	Observation id
title	ACIS-012367 diagnostics	Proposal title
observer	CHANDRA engineering request/realtime commanding	Principal investig
object	 	Source name
dtycle	0	
cycle	P	events from which exps? Prim/Second/Both
ra_targ	0.0	Observer's specified target RA [deg]
dec_targ	0.0	Observer's specified target Dec [deg]
ra_nom	122.79091987586	Nominal RA [deg]
dec_nom	25.727446077678	Nominal Dec [deg]
roll_nom	73.848714813014	Nominal Roll [deg]
revision	3	Processing version of data
ontime	7132.7614064068	Sum of GTIs [s]
livetime	7042.4420866455	Livetime [s]
ontime0	2790.5317345709	Sum of GTIs [s]
ontime1	2787.291053459	Sum of GTIs [s]
ontime2	2663.3283475339	Sum of GTIs [s]
ontime3	2712.7476220727	Sum of GTIs [s]
ontime6	2939.6187966913	Sum of GTIs [s]
ontime7	7132.7614064068	Sum of GTIs [s]
l2events	1225766	Number of level 2 events

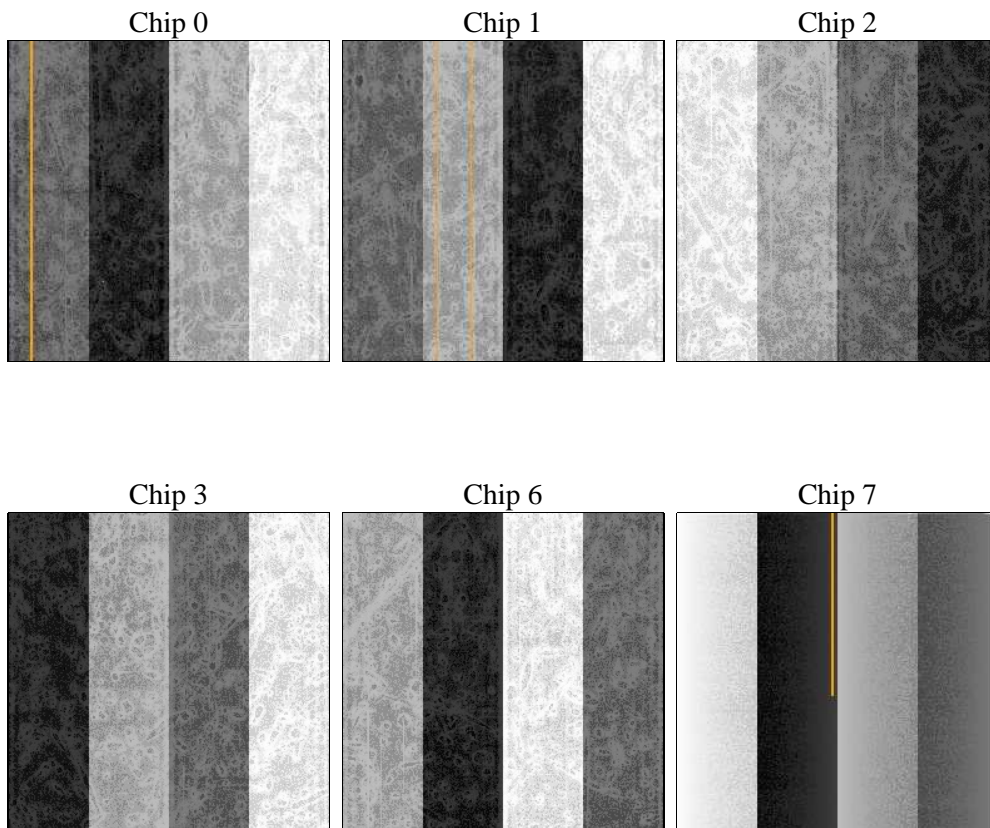
2 OBI

2.1 OBI

2.1.1 Images



2.1.2 Bias



2.1.3 Parameters

obi_num	0	Obi number	sched_exp_time	0.0	[s] Scheduled observation exposure time
ascdsver	8.4.5	Processing system revision	ontime	7132.7614064068	Sum of GTIs [s]
caldsver	4.5.1.1	 	ontime0	2790.5317345709	Sum of GTIs [s]
date	2012-09-24T10:48:15	Date and time of file creation	ontime1	2787.291053459	Sum of GTIs [s]
revision	3	Processing version of data	ontime2	2663.3283475339	Sum of GTIs [s]
			ontime3	2712.7476220727	Sum of GTIs [s]
			ontime6	2939.6187966913	Sum of GTIs [s]
			ontime7	7132.7614064068	Sum of GTIs [s]
			l1events	1424116	Number of level 1 events

2.1.4 Events

	ccd 0	ccd 1	ccd 2	ccd 3	ccd 6	ccd 7		ccd 0	ccd 1	ccd 2	ccd 3	ccd 6	ccd 7
level 1 events	185762	186897	182597	184062	205782	479016	grade 0 events	90650	91038	89699	90930	100448	113707
rejected events	20976	21171	22166	21781	22322	37571		48%	48%	49%	49%	48%	23%
rejected %	11%	11%	12%	11%	10%	7%	grade 1 events	458	475	455	505	505	277
								0%	0%	0%	0%	0%	0%
							grade 2 events	29194	29254	27832	28358	31916	98684
								15%	15%	15%	15%	15%	20%
							grade 3 events	10455	10643	10064	10362	11378	45547
								5%	5%	5%	5%	5%	9%
							grade 4 events	10371	10602	10079	10273	11090	45008
								5%	5%	5%	5%	5%	9%
							grade 5 events	1480	1548	1483	1515	1722	7981
								0%	0%	0%	0%	0%	1%
							grade 6 events	24116	24189	22757	22358	28628	138499
								12%	12%	12%	12%	13%	28%
							grade 7 events	19038	19148	20228	19761	20095	29313
								10%	10%	11%	10%	9%	6%

2.2 Compared Parameters

Parameter	Planned	Actual	Parameter	Planned	Actual
Instrument	ACIS	ACIS	Obspar format version number	7	7
Detector	ACIS-012367	ACIS-012367	Obspar file type	PREDICTED	ACTUAL
Grating	NONE	NONE	Obspar update status	NONE	UPDATED
Data mode	FAINT	FAINT	On-chip summing requested	N	N
Observation mode	SECONDARY	SECONDARY	Subarray requested	NONE	NONE
[deg] Pointing RA	0	122.7909198758585	Alternating exposures requested	N	N
[deg] Pointing Dec	0	25.7274460776777	[s] Primary exposure time	3.2	3.2
[deg] Pointing Roll	0.0	73.84871481301447			
[mm] SIM focus pos	-0.782348	-0.6828225247311905			
[mm] SIM defocus	0	0.8505141146731063			
[mm] SIM translation stage pos	-233.592463	250.466033080201			
[mm] SIM translation stage offset	0	-0.01005468664627074			
[s] Observation start time (MET)	117192956.082535	117192955.31406			
Observation start date	2001-09-18T09:35:56	2001-09-18T09:35:55			
[s] Observation end time (MET)	117235073.334197	117235072.56573			
Observation end date	2001-09-18T21:17:53	2001-09-18T21:17:52			
Read mode	TIMED	TIMED			

2.3 Star Slots

2.4 FID Slots

A Summary

A.1 Status

V&V Scientist	Jen Lauer
V&V Date (YYYY-MM-DD)	2012.09.26
V&V Edition	1
V&V Disposition and Status	OK
V&V Charge Time	7.1327614064068

A.2 Comments