

V&V Reference Report

L2 ASCDS Version : 8.4.5

Observation 61790 - L2 Version 4
Chandra X-Ray Center

L2 Processing Date : Sep 6 2012

Contents

1	Front	2
2	OBI	3
2.1	OBI	3
2.1.1	Images	3
2.1.2	Bias	3
2.1.3	Parameters	4
2.1.4	Events	4
2.2	Compared Parameters	5
2.3	Star Slots	6
2.4	FID Slots	6
A	Summary	7
A.1	Status	7
A.2	Comments	7

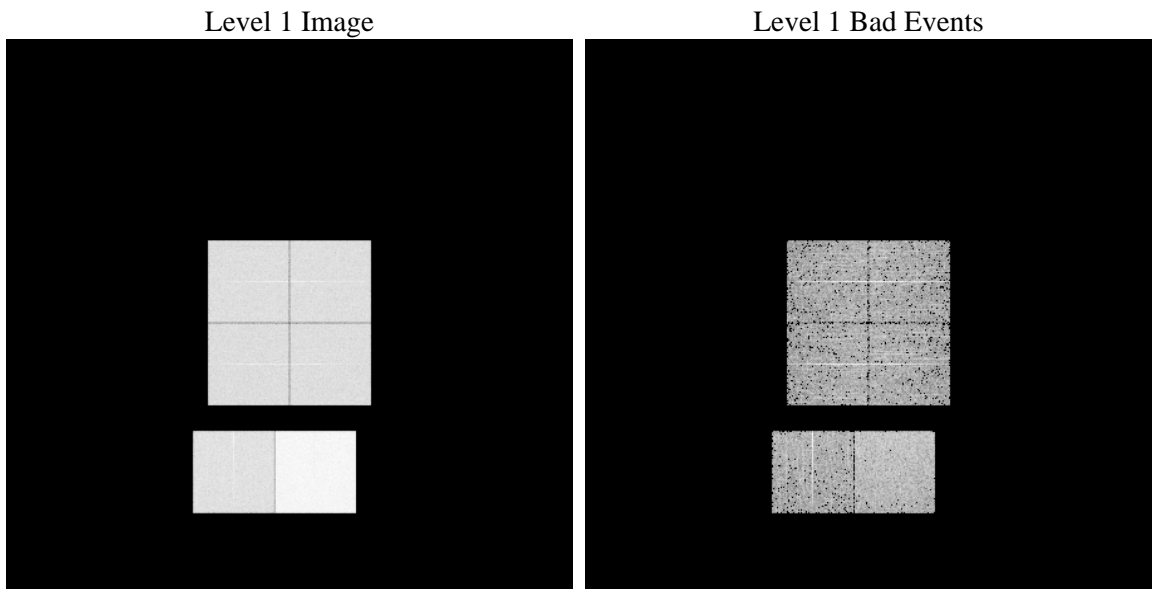
1 Front

seq_num	 	Sequence number
obs_id	61790	Observation id
title	ACIS-012367 diagnostics	Proposal title
observer	CHANDRA engineering request/realtime commanding	Principal investig
object	 	Source name
dtycycle	0	
cycle	P	events from which exps? Prim/Second/Both
ra_targ	0.0	Observer's specified target RA [deg]
dec_targ	0.0	Observer's specified target Dec [deg]
ra_nom	92.632283382459	Nominal RA [deg]
dec_nom	-30.592827148063	Nominal Dec [deg]
roll_nom	341.88568432487	Nominal Roll [deg]
revision	4	Processing version of data
ontime	5723.2812968343	Sum of GTIs [s]
livetime	5650.8096629076	Livetime [s]
ontime0	2492.2110851556	Sum of GTIs [s]
ontime1	2469.5649448782	Sum of GTIs [s]
ontime2	2352.9287445396	Sum of GTIs [s]
ontime3	2414.2266252339	Sum of GTIs [s]
ontime6	2621.6523473561	Sum of GTIs [s]
ontime7	5723.2812968343	Sum of GTIs [s]
l2events	1253922	Number of level 2 events

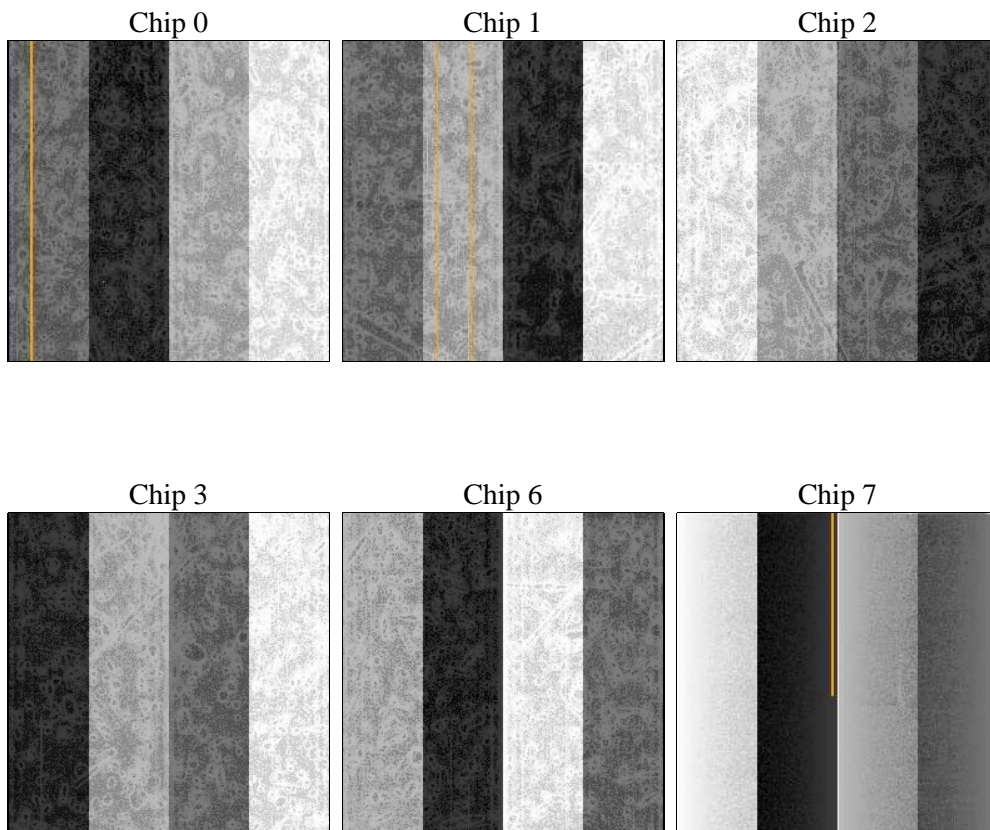
2 OBI

2.1 OBI

2.1.1 Images



2.1.2 Bias



2.1.3 Parameters

obi_num	0	Obi number	sched_exp_time	0.0	[s] Scheduled observation exposure time
ascdsver	8.4.5	Processing system revision	ontime	5723.2812968343	Sum of GTIs [s]
caldsver	4.5.1.1	 	ontime0	2492.2110851556	Sum of GTIs [s]
date	2012-09-06T12:47:36	Date and time of file creation	ontime1	2469.5649448782	Sum of GTIs [s]
revision	4	Processing version of data	ontime2	2352.9287445396	Sum of GTIs [s]
			ontime3	2414.2266252339	Sum of GTIs [s]
			ontime6	2621.6523473561	Sum of GTIs [s]
			ontime7	5723.2812968343	Sum of GTIs [s]
			l1events	1430232	Number of level 1 events

2.1.4 Events

	ccd 0	ccd 1	ccd 2	ccd 3	ccd 6	ccd 7		ccd 0	ccd 1	ccd 2	ccd 3	ccd 6	ccd 7
level 1 events	193725	193923	188219	191728	215845	446792	grade 0 events	97081	96963	94523	97061	106648	107134
rejected events	17964	18586	18609	18572	20052	28812		50%	50%	50%	50%	49%	23%
rejected %	9%	9%	9%	9%	9%	6%	grade 1 events	489	445	465	531	473	304
								0%	0%	0%	0%	0%	0%
							grade 2 events	30973	31153	29889	30340	33972	92799
								15%	16%	15%	15%	15%	20%
							grade 3 events	11079	10987	10614	11019	12064	42675
								5%	5%	5%	5%	5%	9%
							grade 4 events	11253	10946	10754	10941	12047	42171
								5%	5%	5%	5%	5%	9%
							grade 5 events	1394	1406	1311	1345	1650	6382
								0%	0%	0%	0%	0%	1%
							grade 6 events	25375	25288	23830	23795	31062	133201
								13%	13%	12%	12%	14%	29%
							grade 7 events	16081	16735	16833	16696	17929	22126
								8%	8%	8%	8%	8%	4%

2.2 Compared Parameters

Parameter	Planned	Actual	Parameter	Planned	Actual
Instrument	ACIS	ACIS	Obspar format version number	7	7
Detector	ACIS-012367	ACIS-012367	Obspar file type	PREDICTED	ACTUAL
Grating	NONE	NONE	Obspar update status	NONE	UPDATED
Data mode	FAINT	FAINT	On-chip summing requested	N	N
Observation mode	SECONDARY	SECONDARY	Subarray requested	NONE	NONE
[deg] Pointing RA	0	92.63228338245861	Alternating exposures requested	N	N
[deg] Pointing Dec	0	-30.59282714806333	[s] Primary exposure time	3.2	3.2
[deg] Pointing Roll	0.0	341.8856843248743			
[mm] SIM focus pos	-0.782348	-0.7809083437167272			
[mm] SIM defocus	0	0.7524282956875696			
[mm] SIM translation stage pos	-233.592463	250.466033080201			
[mm] SIM translation stage offset	0	-0.01005468664627074			
[s] Observation start time (MET)	95256307.028777	95256306.26031201			
Observation start date	2001-01-07T12:05:07	2001-01-07T12:05:06			
[s] Observation end time (MET)	95269051.87926599	95269051.1108			
Observation end date	2001-01-07T15:37:32	2001-01-07T15:37:31			
Read mode	TIMED	TIMED			

2.3 Star Slots

2.4 FID Slots

A Summary

A.1 Status

V&V Scientist	Jen Lauer
V&V Date (YYYY-MM-DD)	2012.09.17
V&V Edition	1
V&V Disposition and Status	OK
V&V Charge Time	5.7232812968343

A.2 Comments