

V&V Reference Report

L2 ASCDS Version : 8.5.1.1

Observation 6290 - L2 Version 3
Chandra X-Ray Center

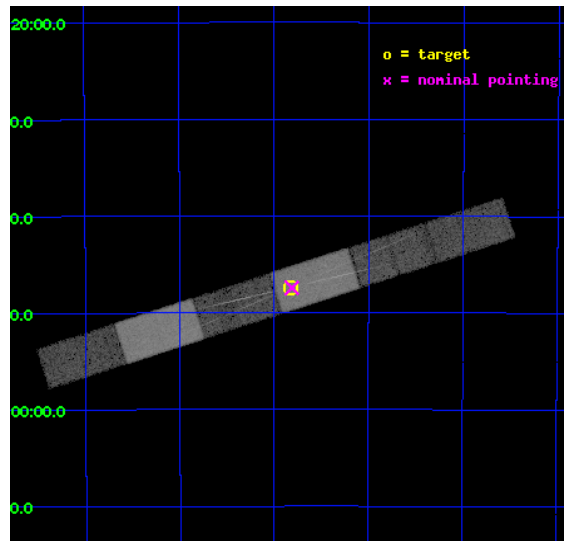
L2 Processing Date : Dec 25 2012

Contents

1	Front	2
2	OBI	3
2.1	OBI	3
2.1.1	Images	3
2.1.2	Bias	3
2.1.3	Parameters	4
2.1.4	Events	4
2.2	Compared Parameters	5
2.3	Aspect	6
2.4	Star Slots	9
2.4.1	Slot 3	9
2.4.2	Slot 4	10
2.4.3	Slot 5	11
2.4.4	Slot 6	12
2.4.5	Slot 7	13
2.5	FID Slots	14
2.5.1	Slot 0	14
2.5.2	Slot 1	15
2.5.3	Slot 2	16
3	Gratings	17
3.1	HEG Arm	17
3.2	MEG Arm	19
A	Summary	21
A.1	Status	21
A.2	Comments	21

1 Front

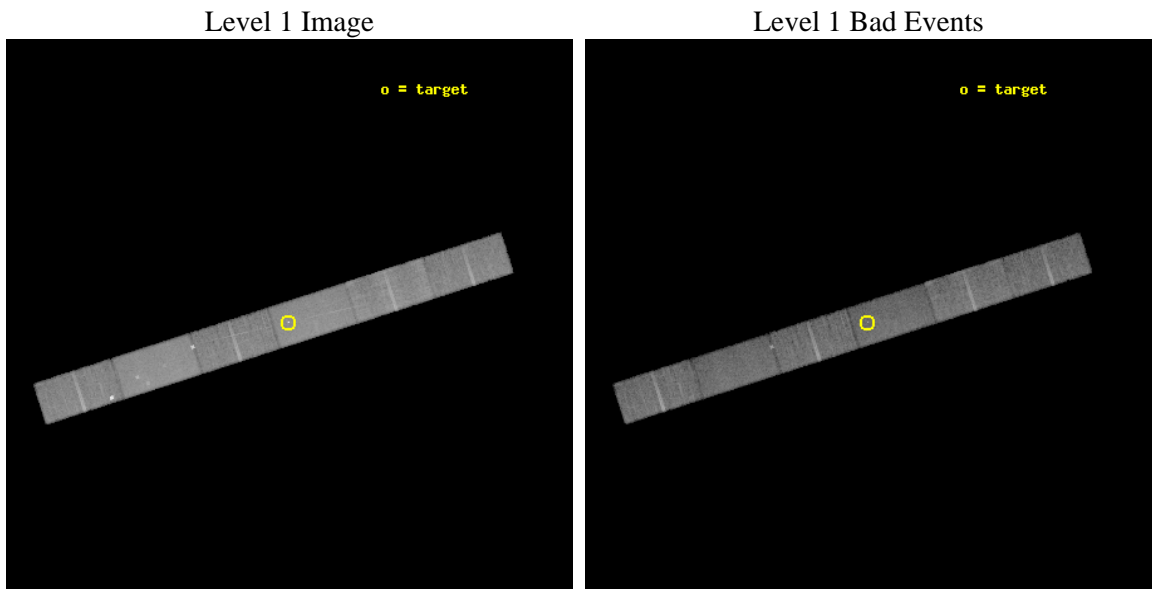
seq_num	400405	Sequence number
obs_id	6290	Observation id
title	Resolving the Fe Line, Warm Absorber, and Scattering Halo of GX339-4 with Joint Chandra/RXTE Observations	Proposal title
observer	Dr. Michael Nowak	Principal investigator
object	GX 339-4	Source name
dtcycle	0	
cycle	P	events from which exps? Prim/Second/Both
ra_targ	255.705833	Observer's specified target RA [deg]
dec_targ	-48.789556	Observer's specified target Dec [deg]
ra_nom	255.70292572642	Nominal RA [deg]
dec_nom	-48.790684591125	Nominal Dec [deg]
roll_nom	342.17359527813	Nominal Roll [deg]
revision	3	Processing version of data
ontime	21732.547576994	Sum of GTIs [s]
livetime	21220.265405097	Livetime [s]
ontime4	21732.588616997	Sum of GTIs [s]
ontime5	21732.50653699	Sum of GTIs [s]
ontime6	21732.465496987	Sum of GTIs [s]
ontime7	21732.547576994	Sum of GTIs [s]
ontime8	21732.424456984	Sum of GTIs [s]
ontime9	21732.38341701	Sum of GTIs [s]
l2events	142774	Number of level 2 events



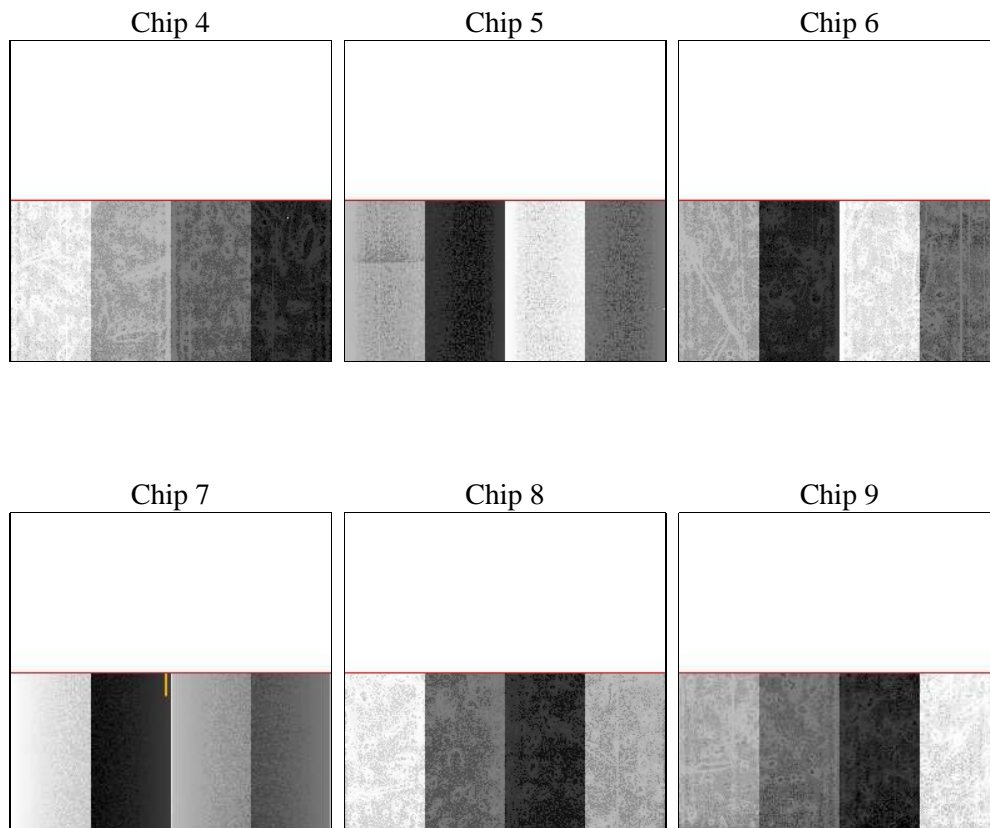
2 OBI

2.1 OBI

2.1.1 Images



2.1.2 Bias



2.1.3 Parameters

obi_num	0	Obi number	sched_exp_time	21660.000000	[s] Scheduled observation exposure time
ascdsver	8.5.1.1	Processing system revision	ontime	21732.547576994	Sum of GTIs [s]
caldsver	4.5.5	 	ontime4	21732.588616997	Sum of GTIs [s]
date	2012-12-25T04:22:17	Date and time of file creation	ontime5	21732.50653699	Sum of GTIs [s]
revision	3	Processing version of data	ontime6	21732.465496987	Sum of GTIs [s]
			ontime7	21732.547576994	Sum of GTIs [s]
			ontime8	21732.424456984	Sum of GTIs [s]
			ontime9	21732.38341701	Sum of GTIs [s]
			l1events	621919	Number of level 1 events

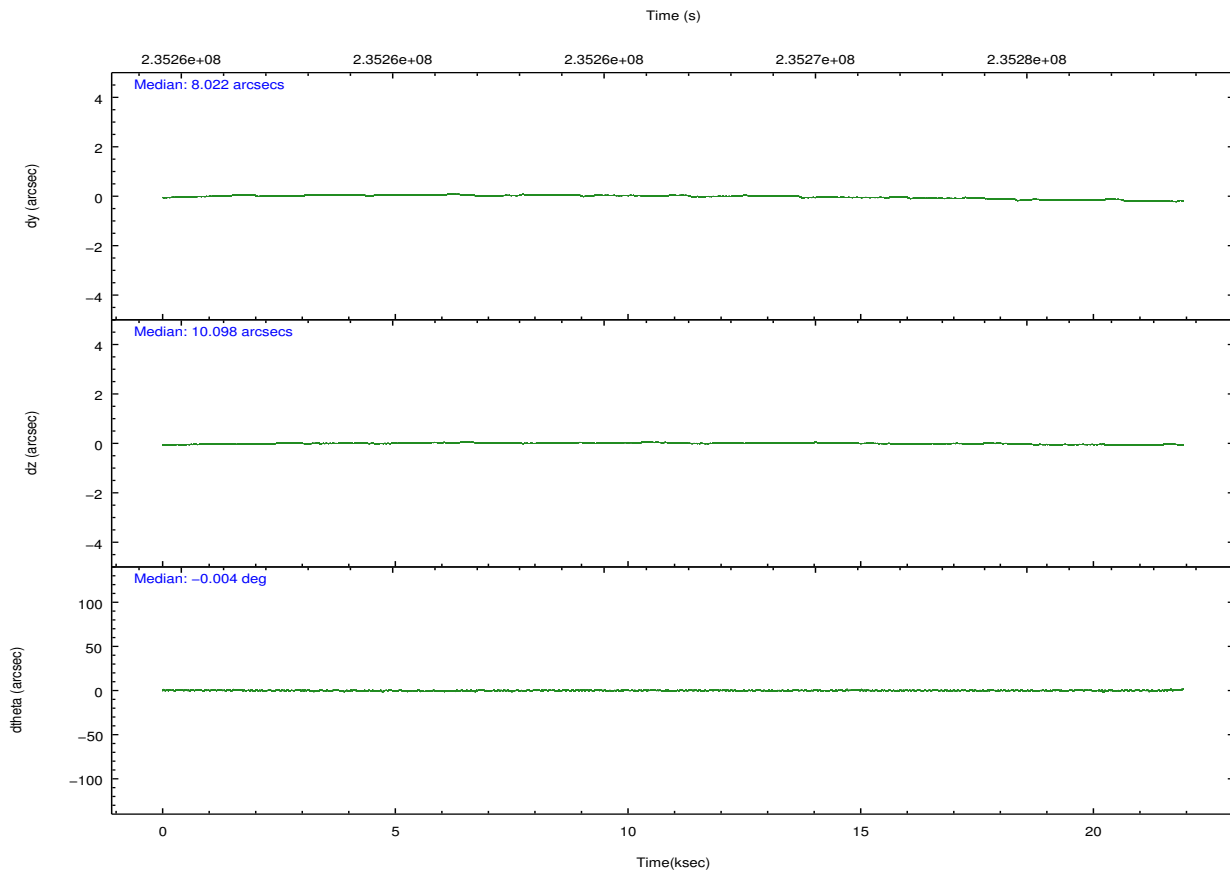
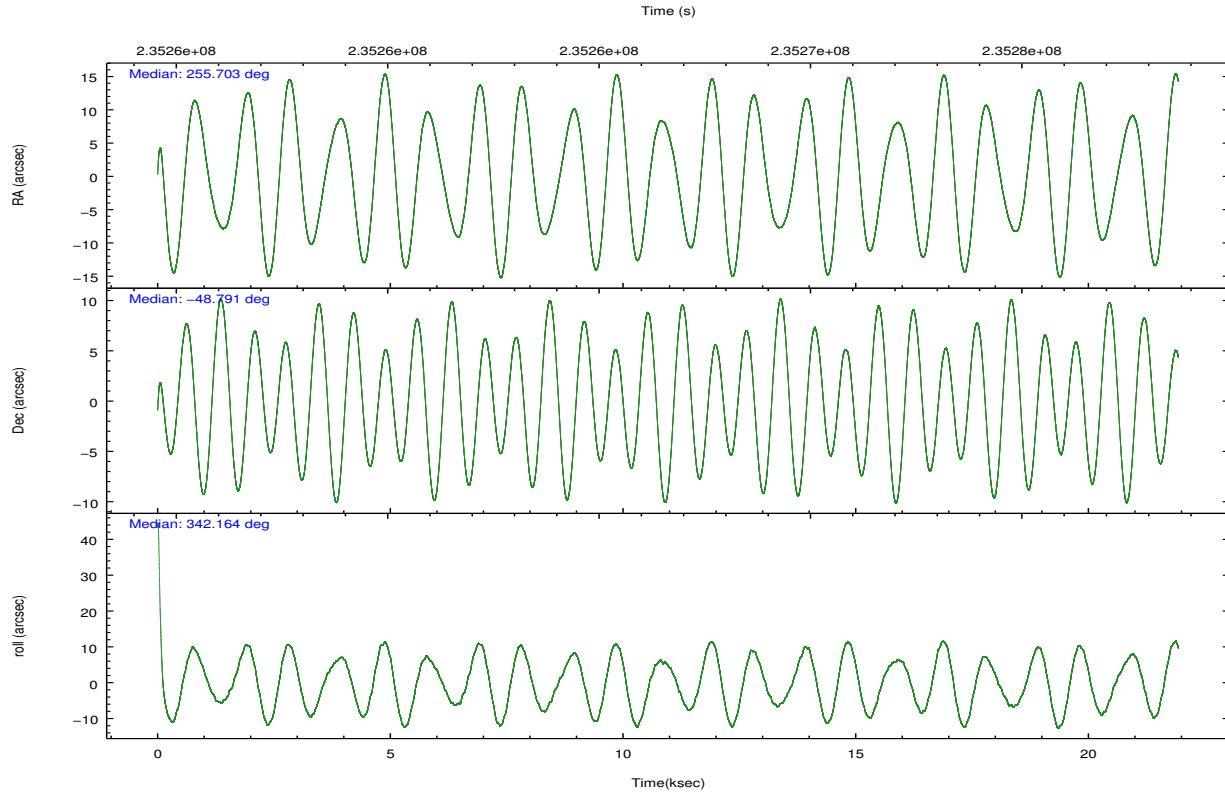
2.1.4 Events

	ccd 4	ccd 5	ccd 6	ccd 7	ccd 8	ccd 9		ccd 4	ccd 5	ccd 6	ccd 7	ccd 8	ccd 9
level 1 events	100874	125182	87426	114817	111681	81939	grade 0 events	13979	7032	5359	4948	8051	4265
rejected events	80333	66533	75074	63850	86136	71089		13%	5%	6%	4%	7%	5%
rejected %	79%	53%	85%	55%	77%	86%	grade 1 events	91	651	28	103	54	46
								0%	0%	0%	0%	0%	0%
							grade 2 events	2346	16192	2398	10616	5396	2062
								2%	12%	2%	9%	4%	2%
							grade 3 events	1230	3382	1234	4871	2803	1312
								1%	2%	1%	4%	2%	1%
							grade 4 events	1201	3289	1275	4745	2507	1189
								1%	2%	1%	4%	2%	1%
							grade 5 events	3446	10125	3771	10331	4745	3919
								3%	8%	4%	8%	4%	4%
							grade 6 events	1787	28762	2086	25789	6791	2022
								1%	22%	2%	22%	6%	2%
							grade 7 events	76794	55749	71275	53414	81334	67124
								76%	44%	81%	46%	72%	81%

2.2 Compared Parameters

Parameter	Planned	Actual	Parameter	Planned	Actual
Instrument	ACIS	ACIS	Obspar format version number	7	7
Detector	ACIS-456789	ACIS-456789	Obspar file type	PREDICTED	ACTUAL
Grating	HETG	HETG	Obspar update status	NONE	UPDATED
Data mode	FAINT	FAINT	Number of optional ACIS chips dropped	0	0
Observation mode	POINTING	POINTING	On-chip summing requested	N	N
[deg] Pointing RA	255.662627	255.7029257264164	Subarray requested	CUSTOM	1/2
[deg] Pointing Dec	-48.796789	-48.79068459112528	Subarray start row	1	1
[deg] Pointing Roll	341.986619	342.1735952781277	Subarray row count	512	512
[mm] SIM focus pos	-0.684267	-0.6828225247311905	Alternating exposures requested	N	N
[mm] SIM defocus	0	0.001444936568705701	[s] Primary exposure time	0.000000	1.7
[mm] SIM translation stage pos	-183.992523	-183.9875365069546			
[mm] SIM translation stage offset	-6.14	-6.144986076053243			
[s] Observation start time (MET)	235255939.184000	235254954.6997			
Observation start date	2005-06-15T20:51:15	2005-06-15T20:35:54			
[s] Observation end time (MET)	235277599.184000	235278350.83827			
Observation end date	2005-06-16T02:52:15	2005-06-16T03:05:50			
Read mode	TIMED	TIMED			

2.3 Aspect

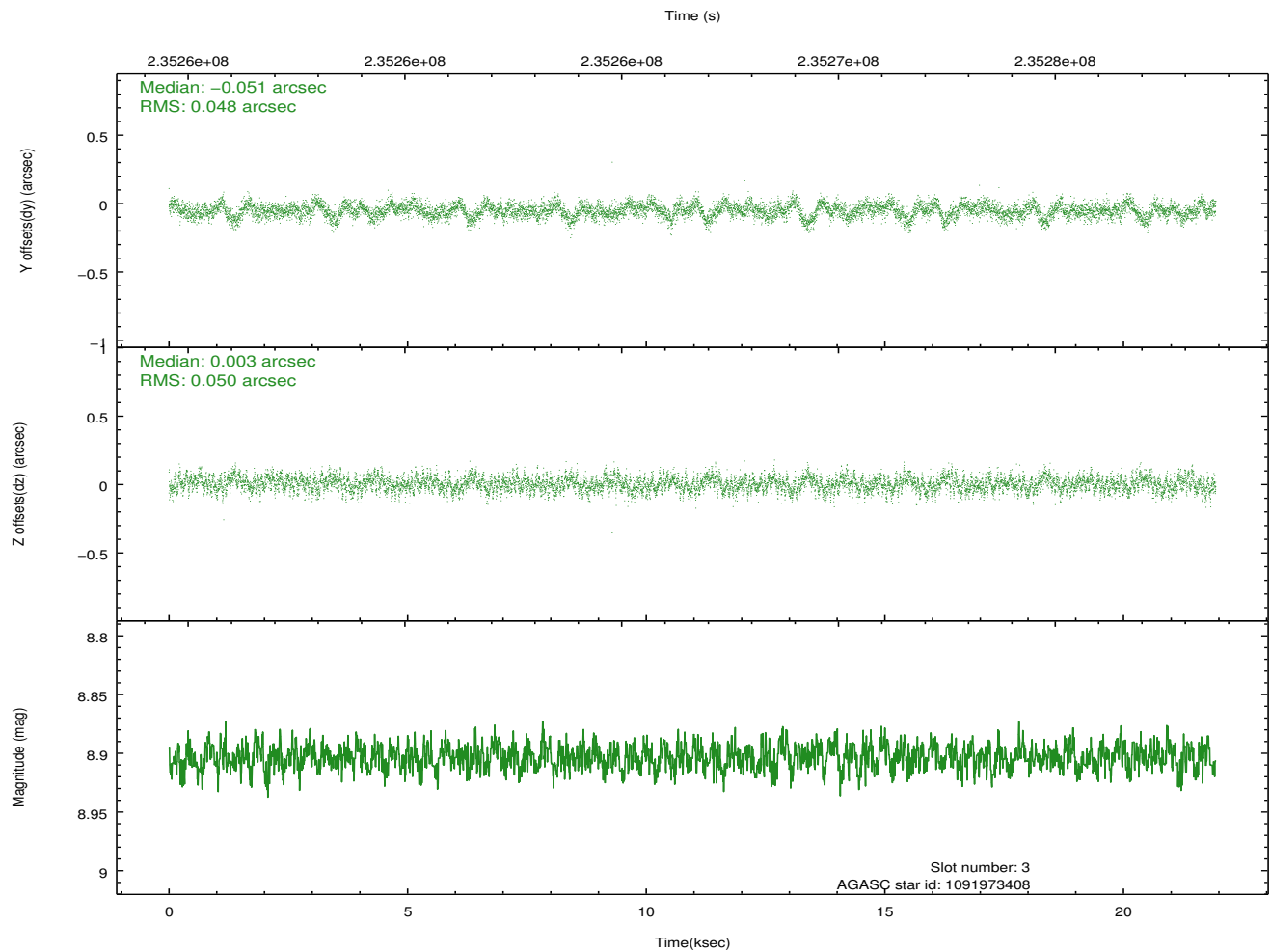
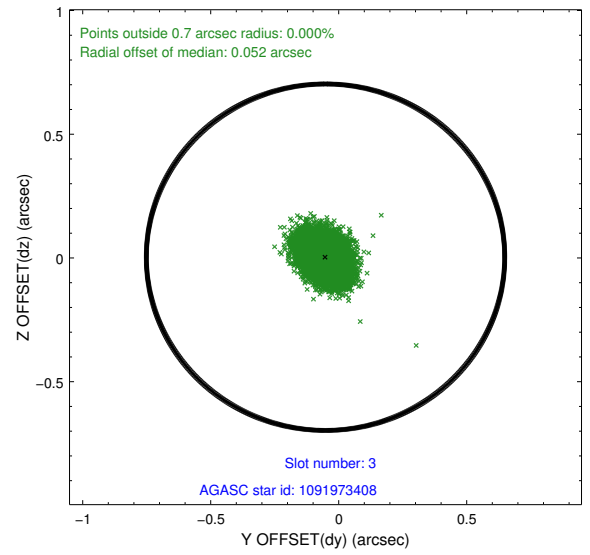
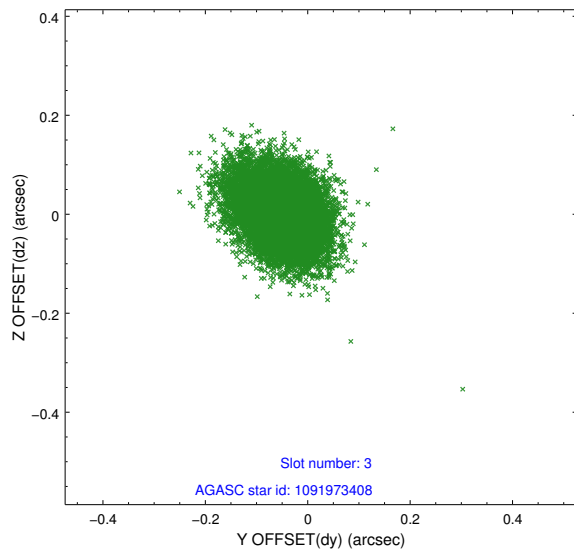


Slot Statistics

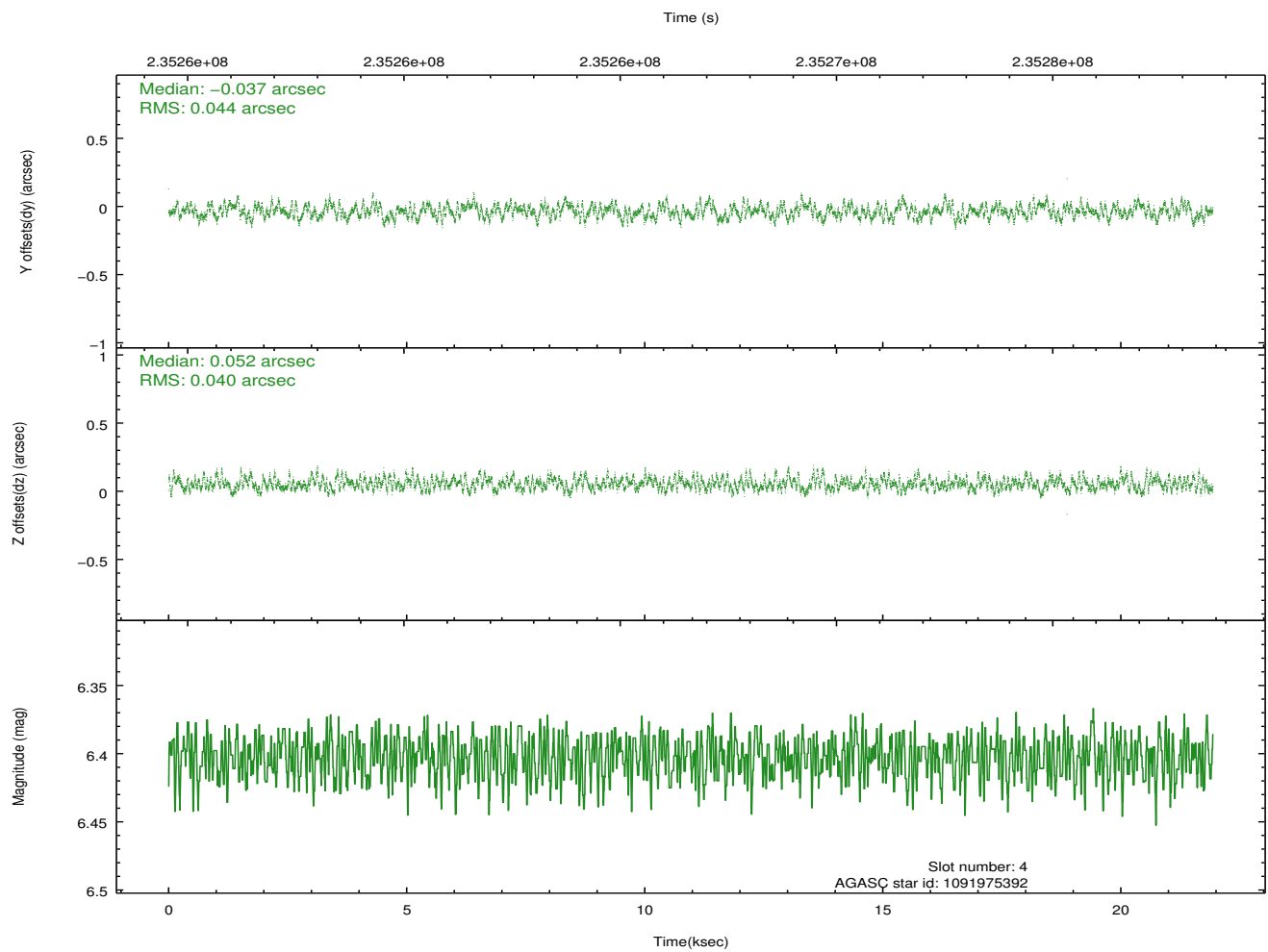
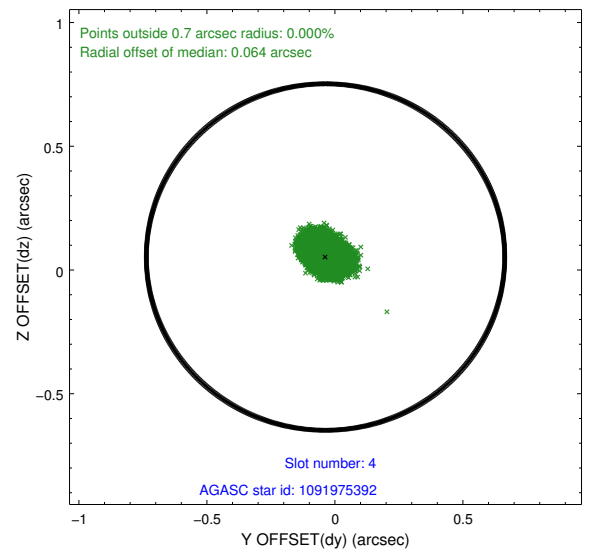
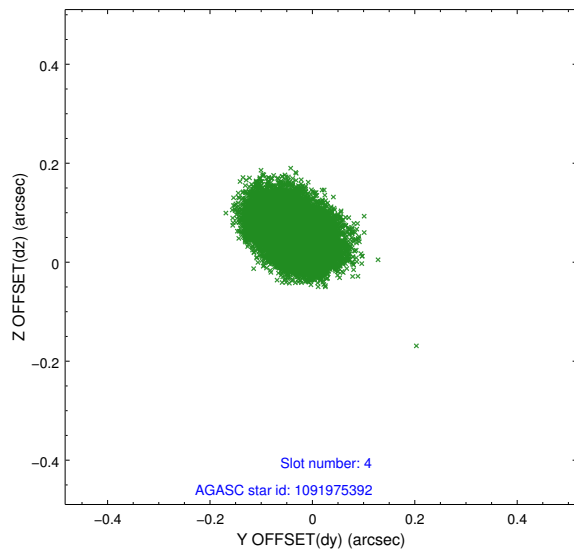
slot	status	id	mag	n_pts	med_dy	med_dz	dr1	dr2	ra	dec	mean_y	mean_z
0	FID	ACIS-S-2	7.08	5349	-0.101	-0.085	0.006	0.011	0.000000	0.000000	-760.43	-1858.09
1	FID	ACIS-S-4	7.18	5350	0.069	0.055	0.006	0.010	0.000000	0.000000	2152.94	50.35
2	FID	ACIS-S-6	7.40	5349	0.005	0.037	0.007	0.012	0.000000	0.000000	401.85	687.90
3	GUIDE	1091973408	8.90	10697	-0.051	0.003	0.074	0.120	255.800233	-48.601800	94.62	768.94
4	GUIDE	1091975392	6.40	10699	-0.037	0.052	0.065	0.101	255.805002	-48.336791	-188.03	1680.33
5	GUIDE	1092485728	6.88	10699	0.135	0.044	0.060	0.099	254.773222	-48.875124	-1911.10	-930.87
6	GUIDE	1092491384	9.12	10692	-0.105	0.000	0.086	0.139	254.923973	-49.184437	-1218.50	-1872.60
7	GUIDE	1091962216	9.47	10686	0.054	-0.101	0.100	0.162	255.189308	-47.995738	-1975.36	2386.29

2.4 Star Slots

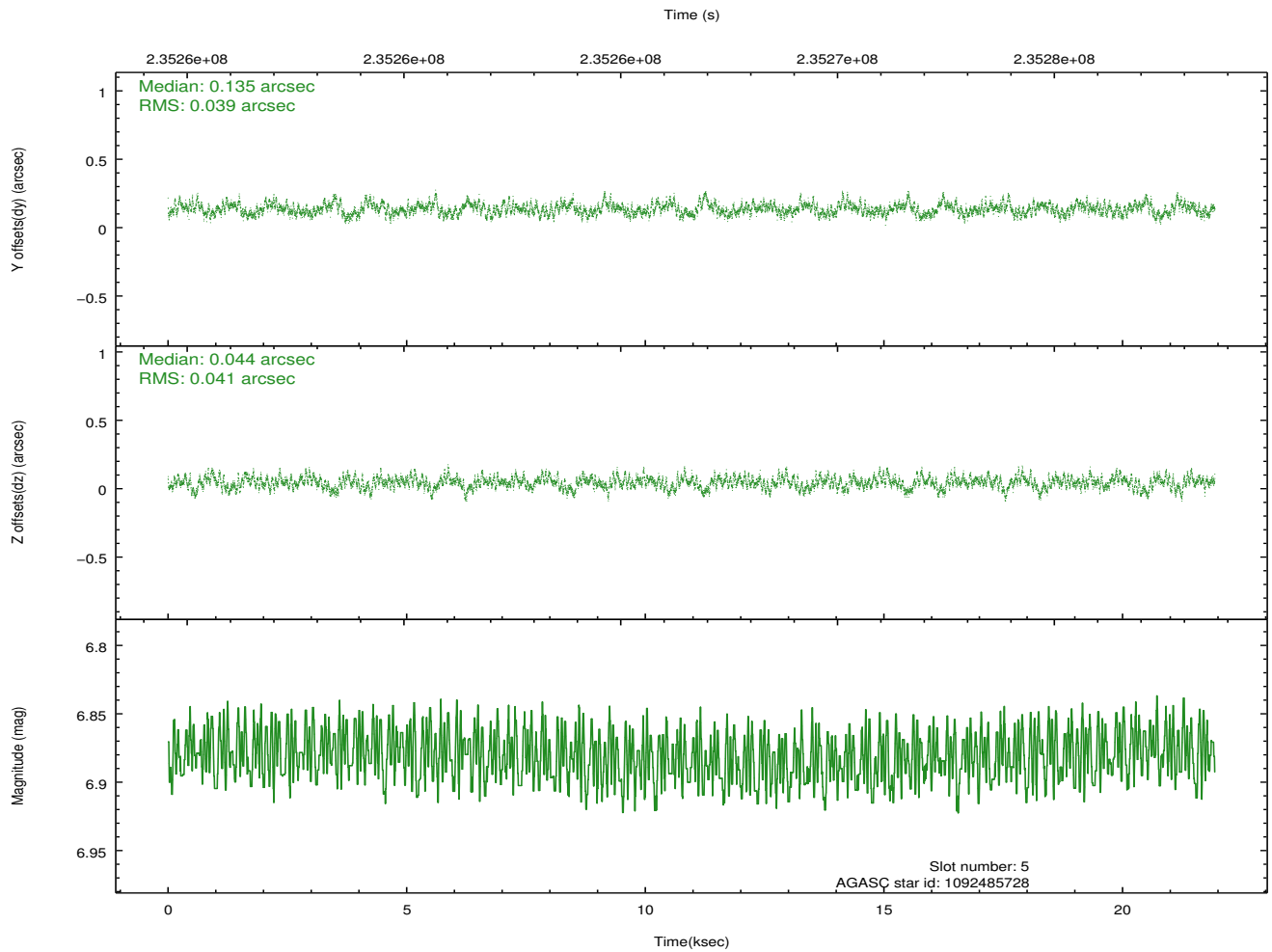
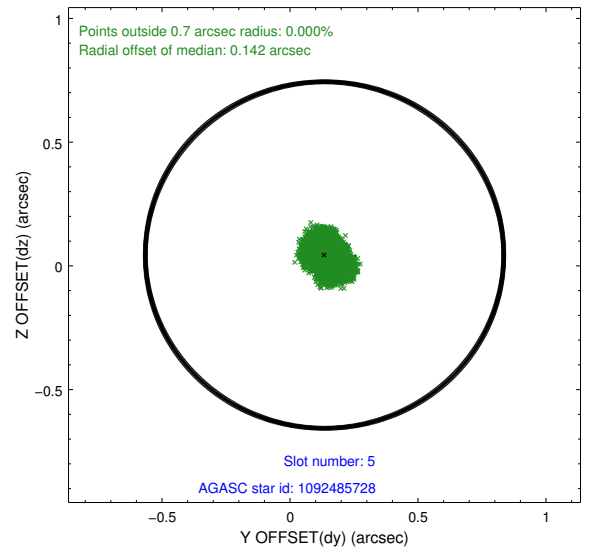
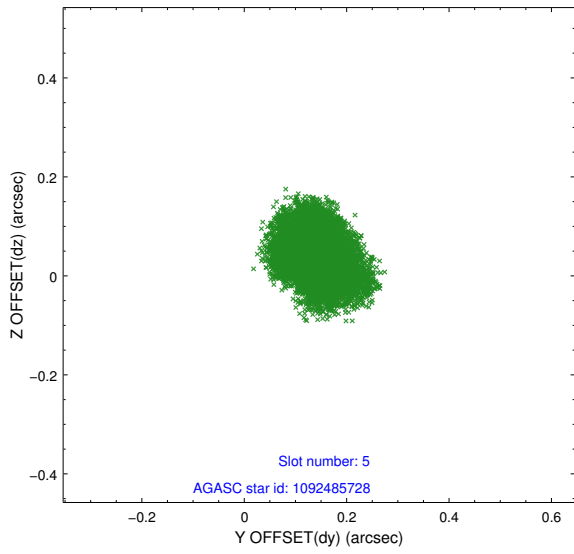
2.4.1 Slot 3



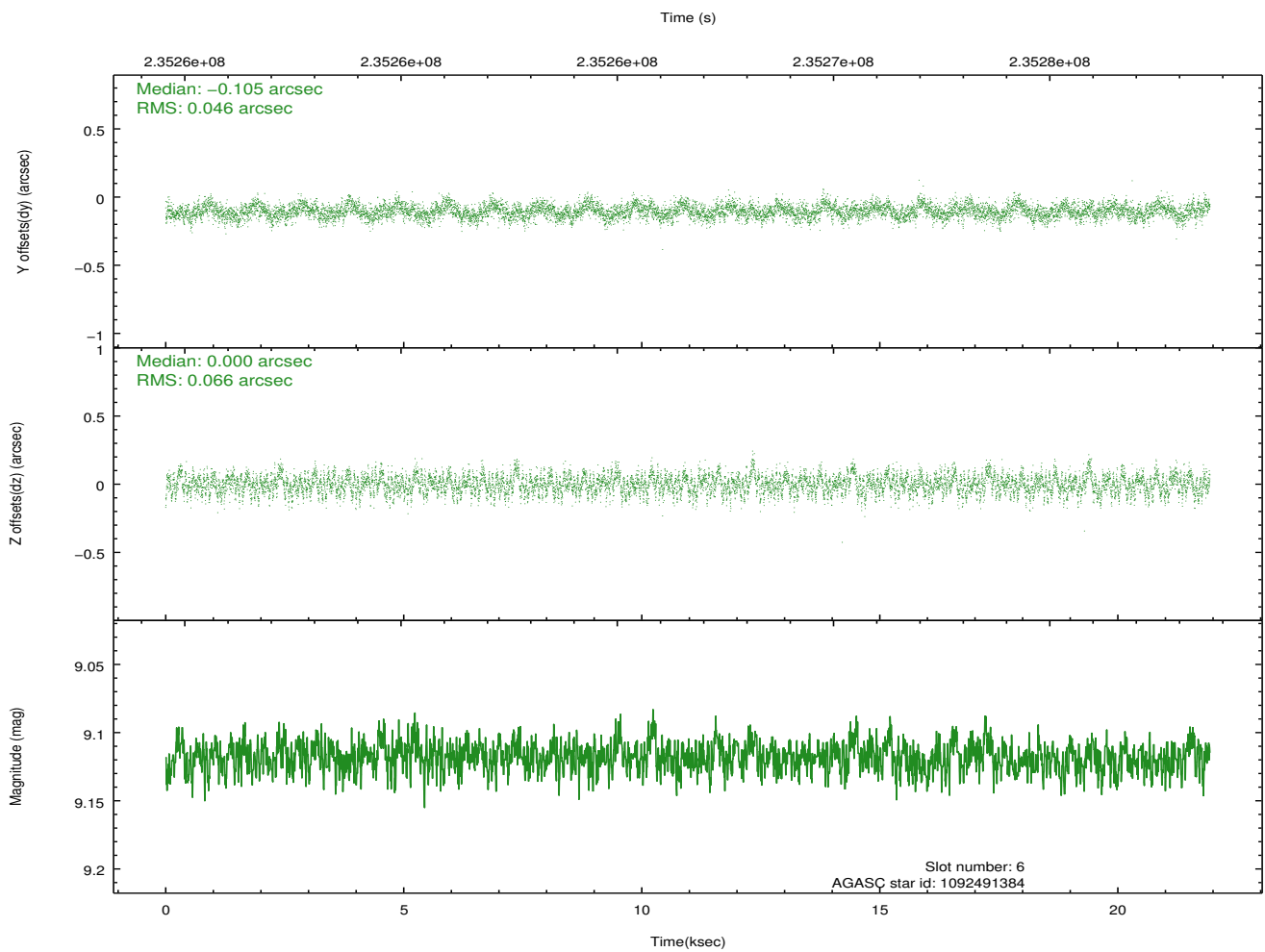
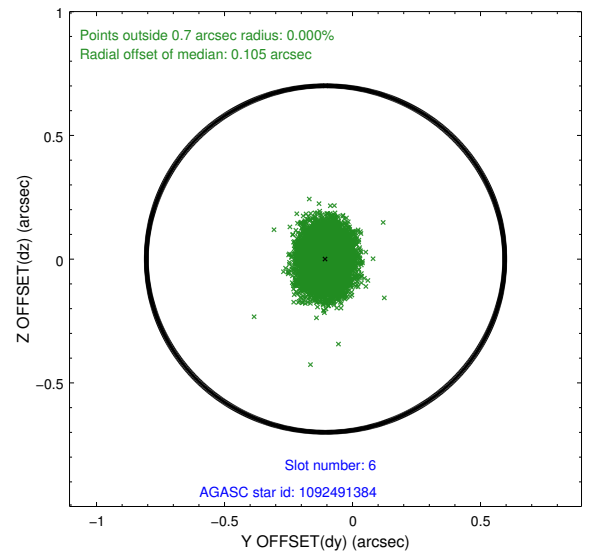
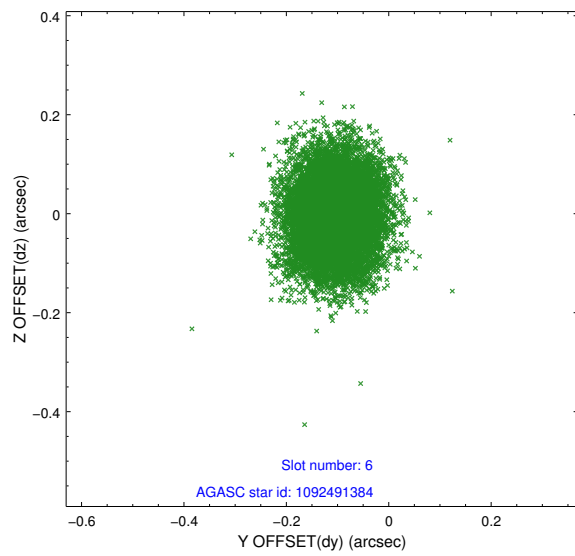
2.4.2 Slot 4



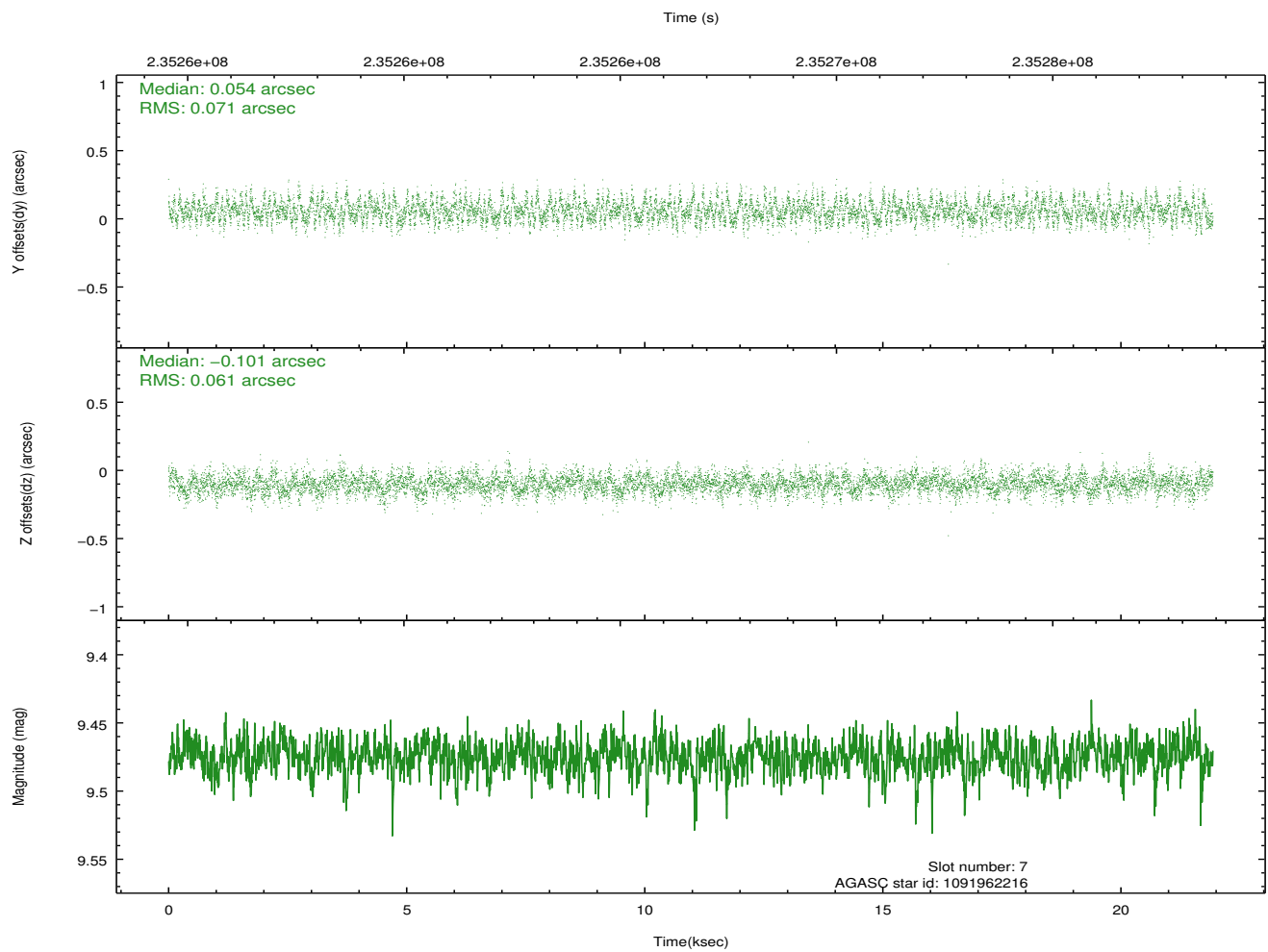
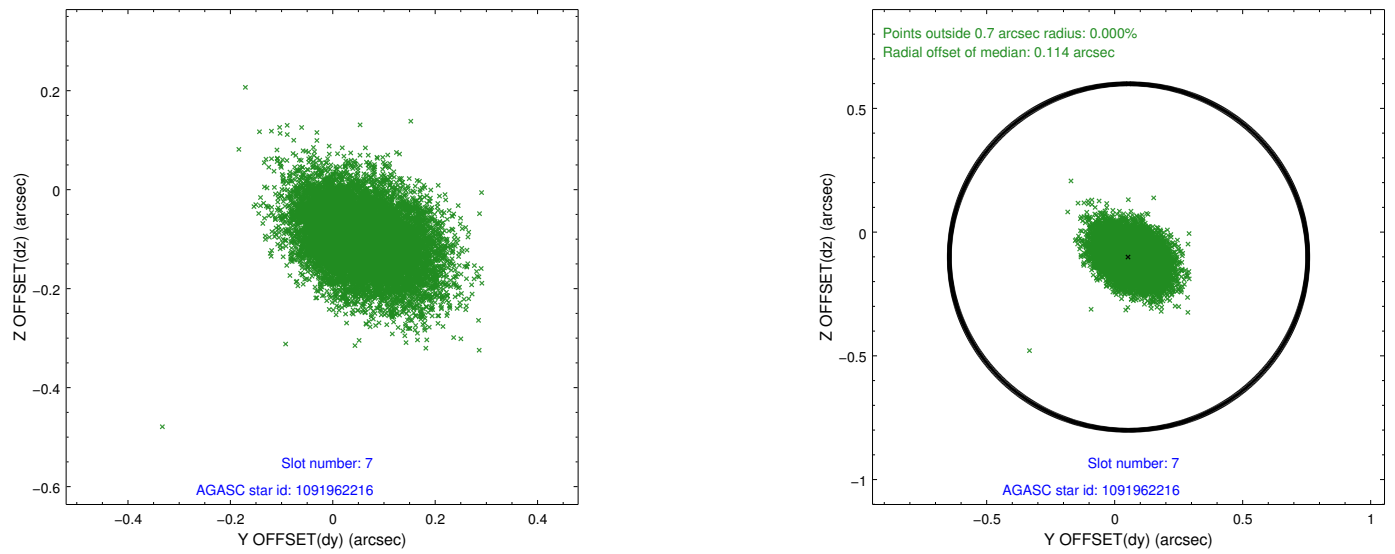
2.4.3 Slot 5



2.4.4 Slot 6

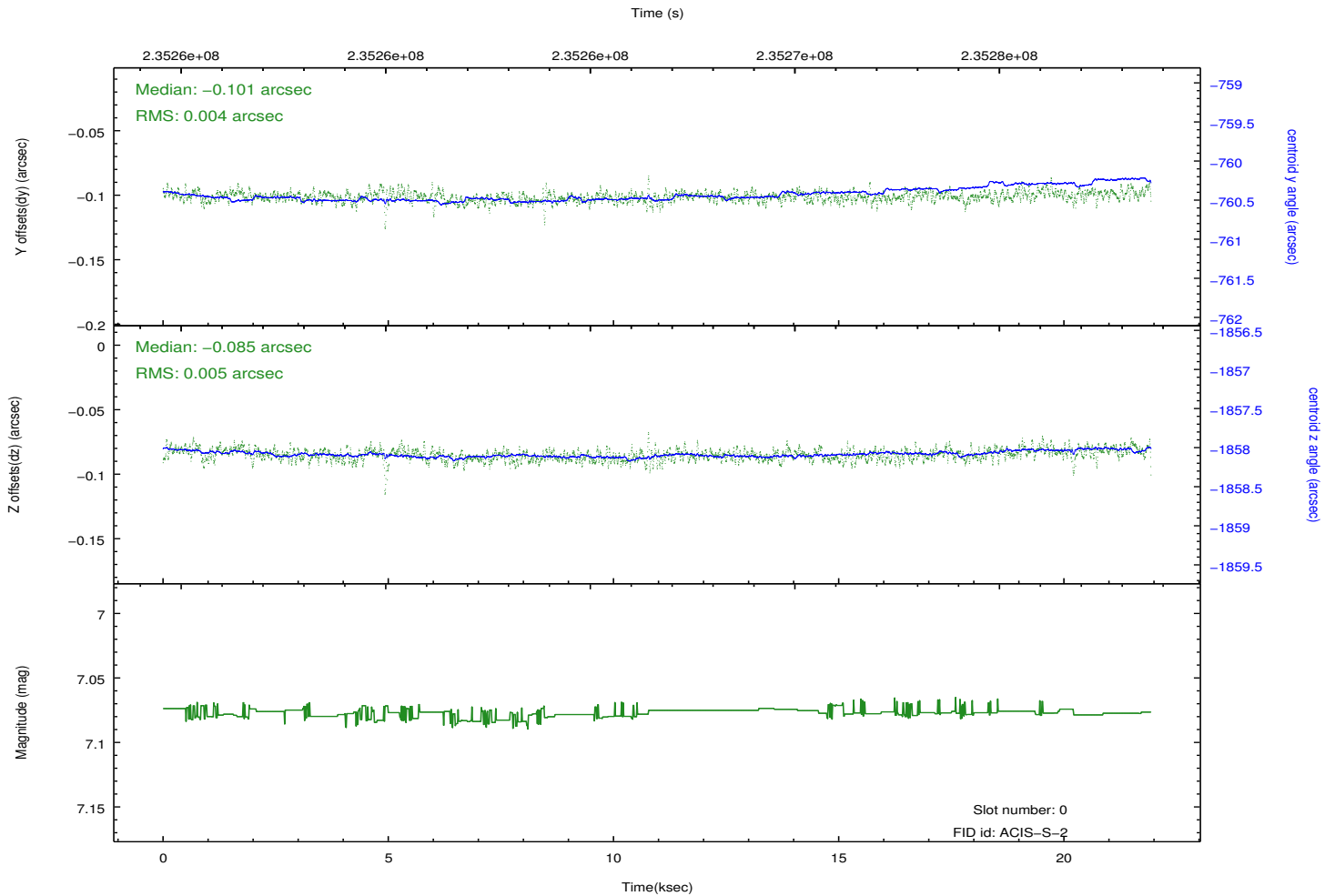
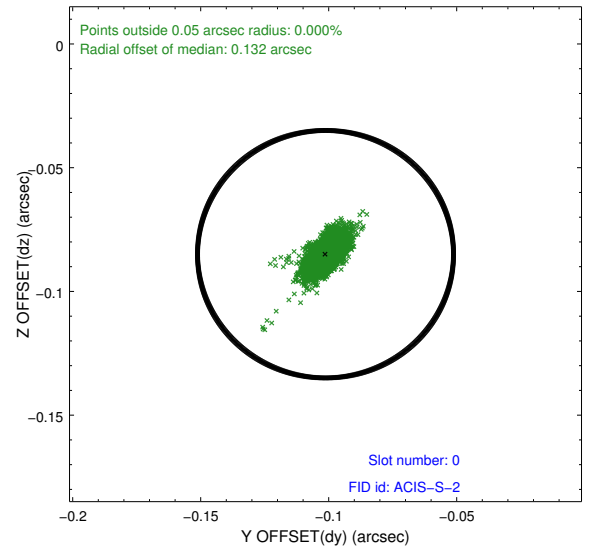
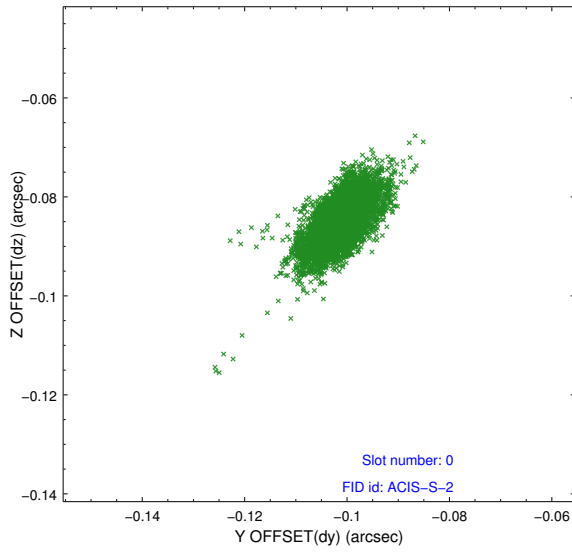


2.4.5 Slot 7

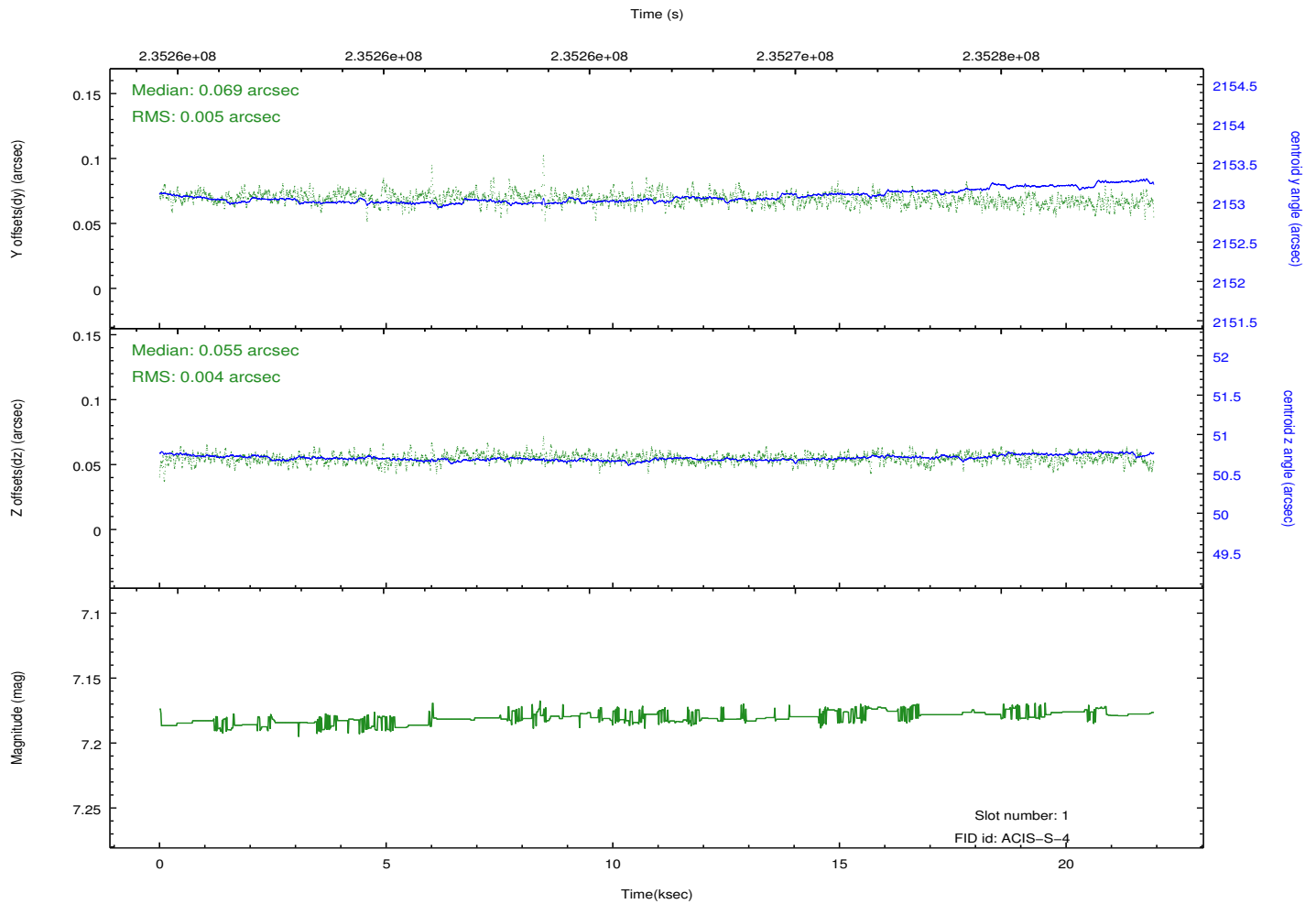
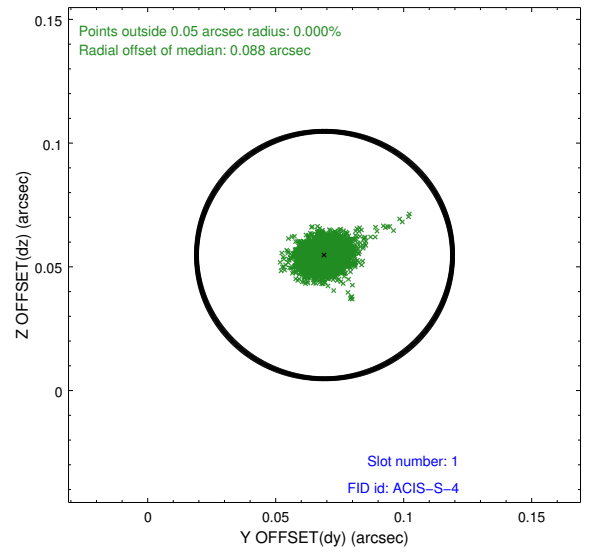
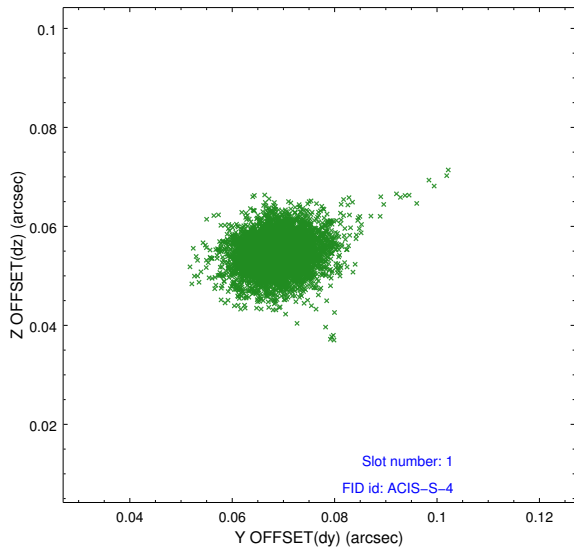


2.5 FID Slots

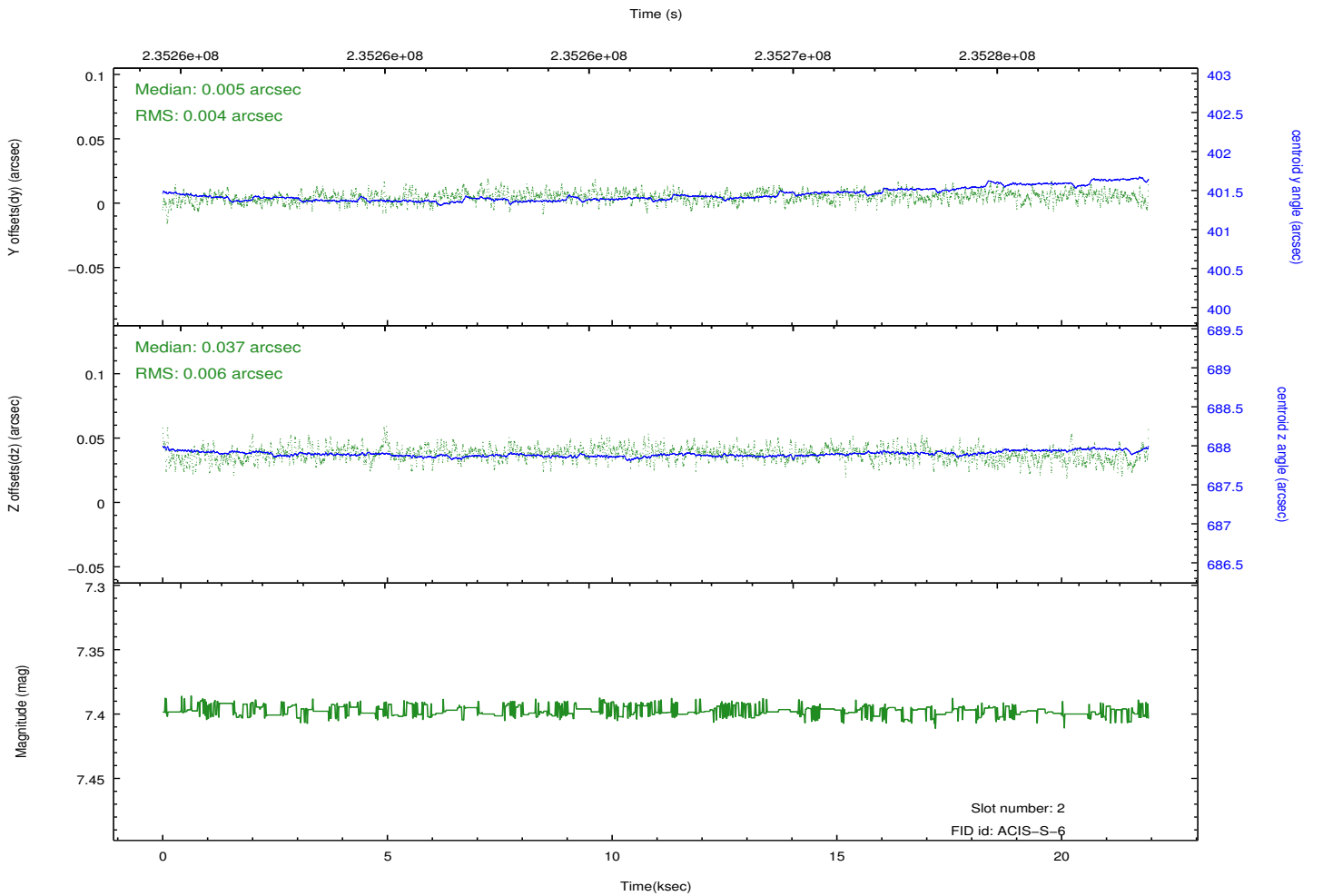
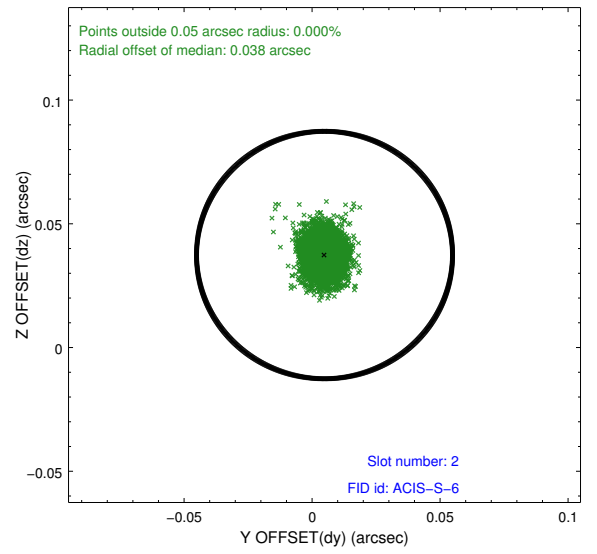
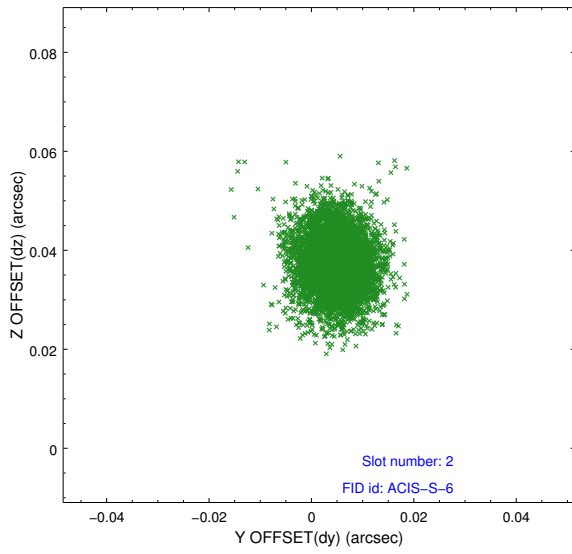
2.5.1 Slot 0



2.5.2 Slot 1



2.5.3 Slot 2

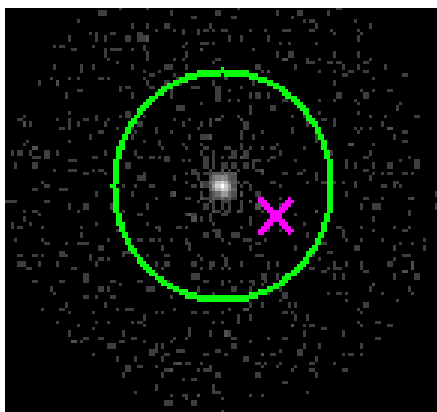


3 Gratings

3.1 HEG Arm



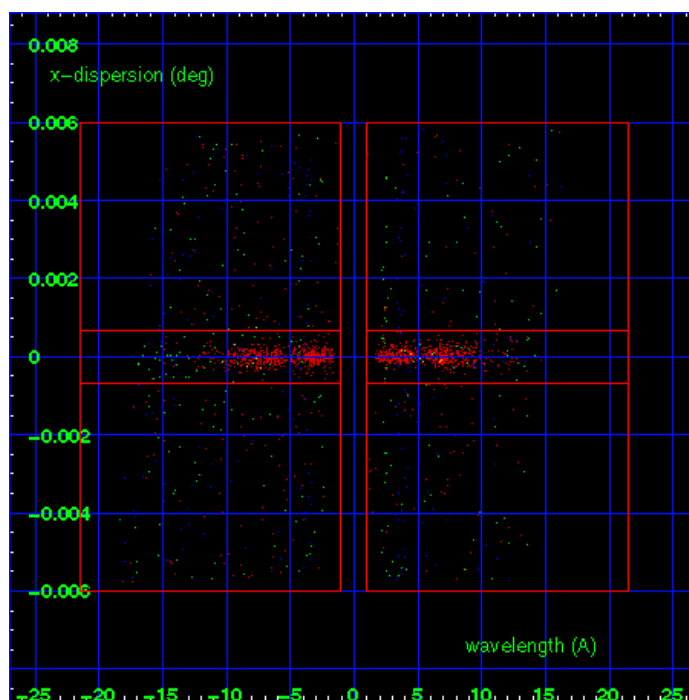
HEG Order Sort 123



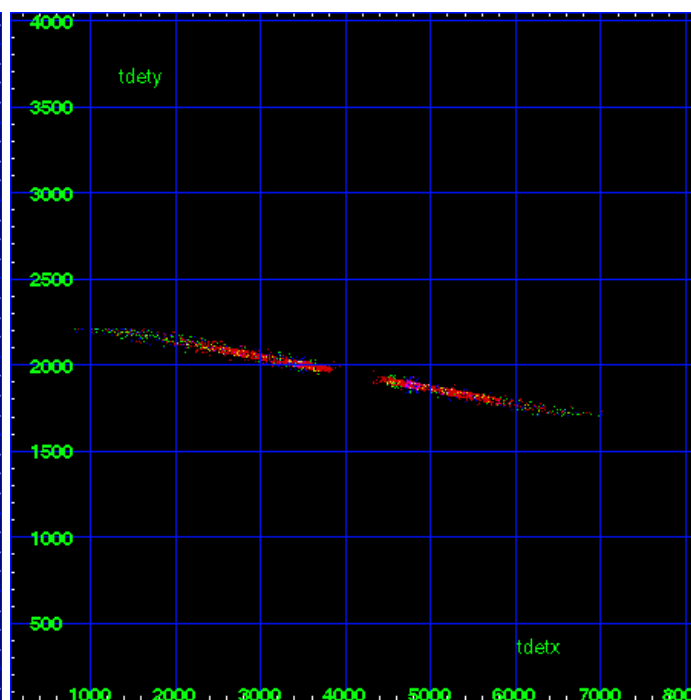
HEG Zero Order



HEG Order Sort ALL

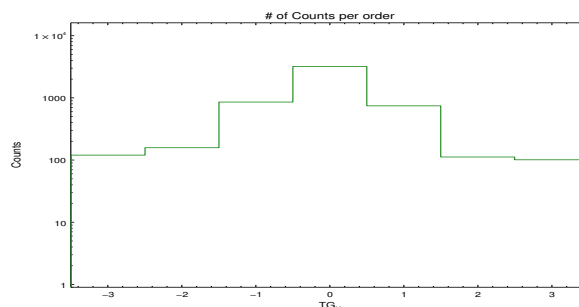


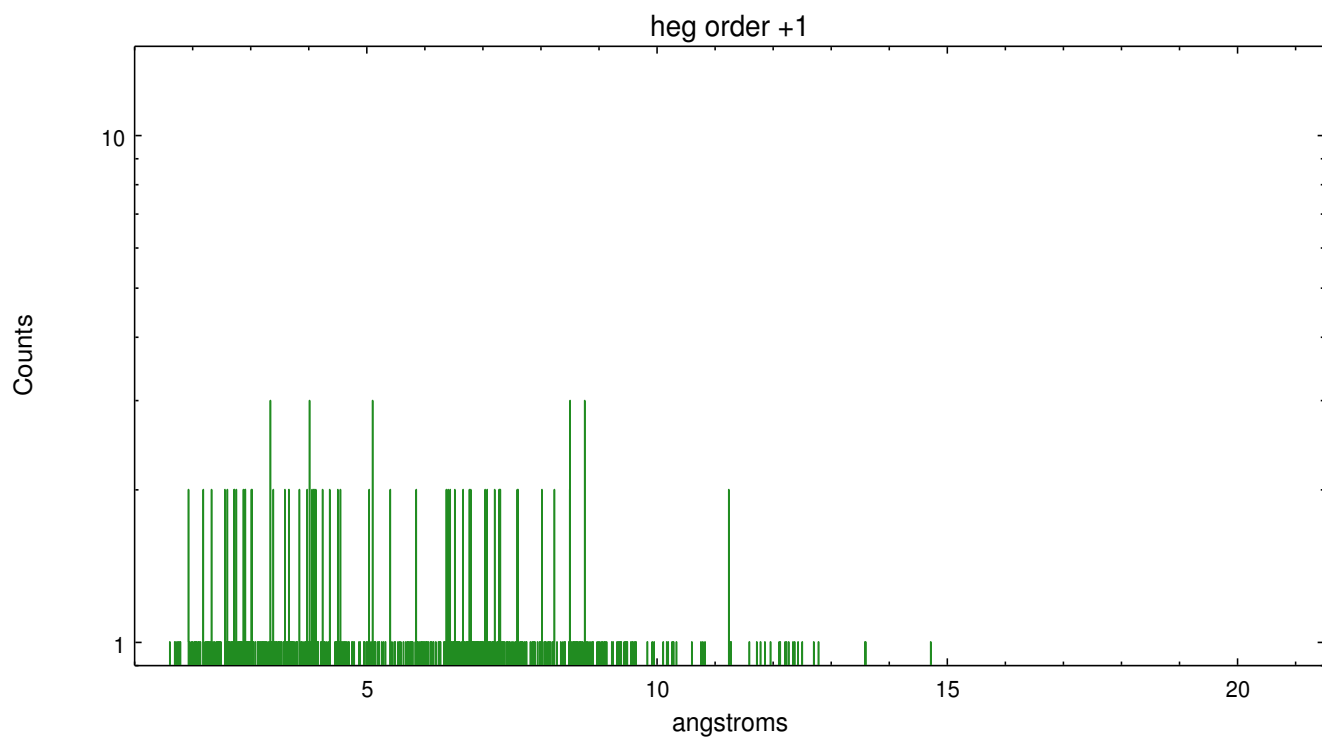
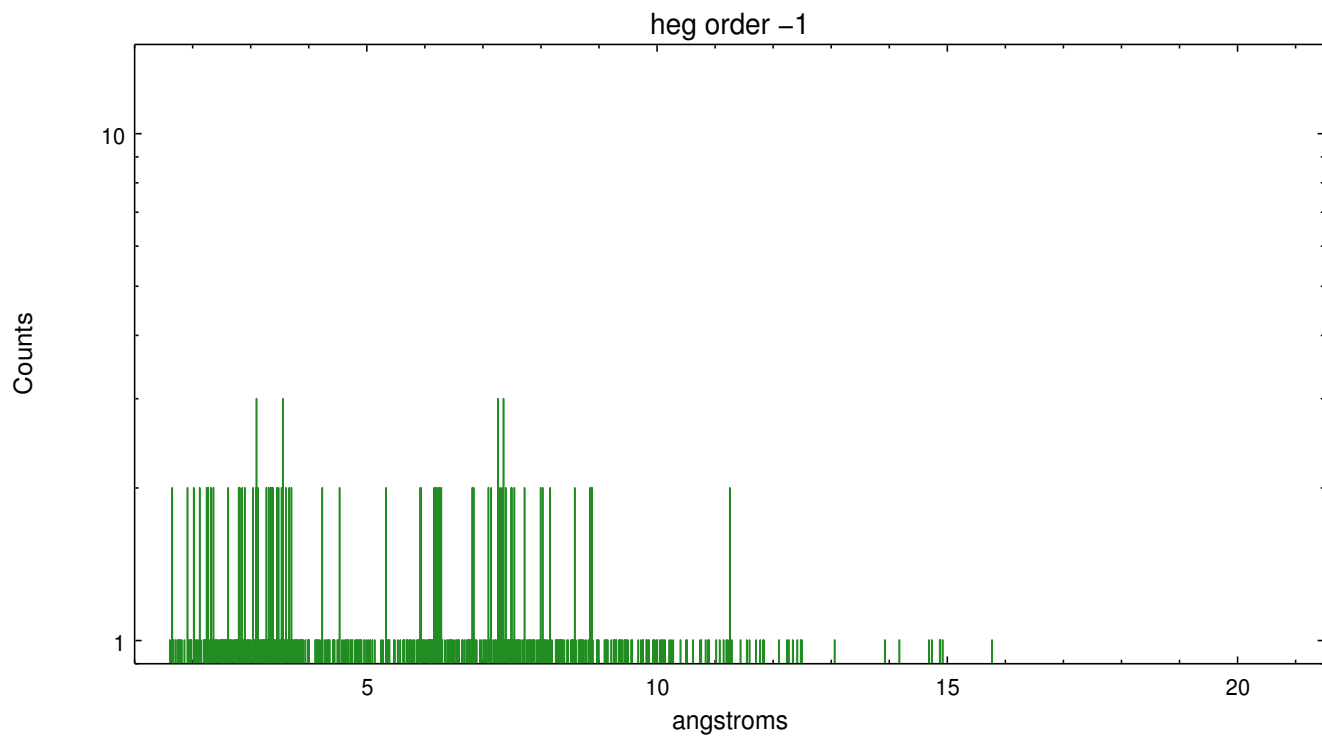
Spot Image HEG



Full Detector HEG

	order -3	order -2	order -1	order 0	order 1	order 2	order 3
Events	120	158	859	3221	747	112	101

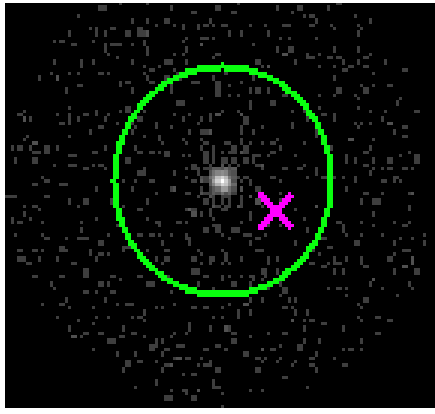




3.2 MEG Arm



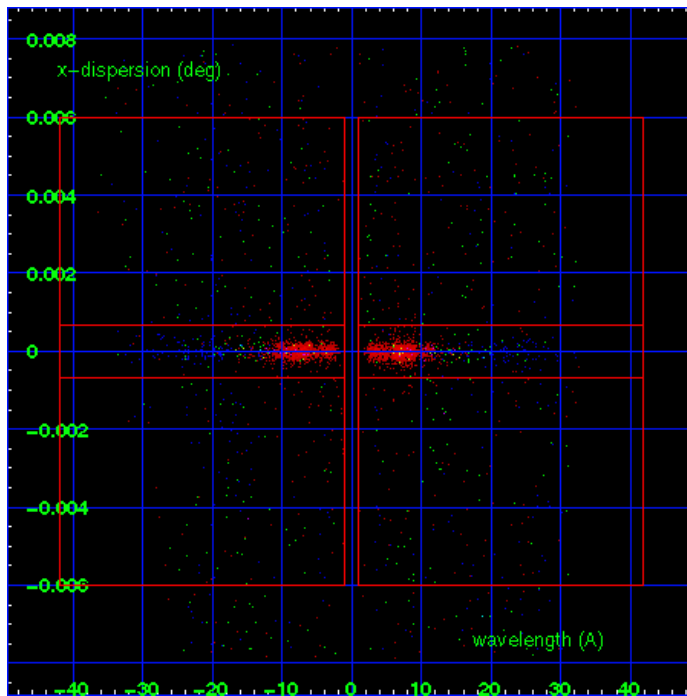
MEG Order Sort 123



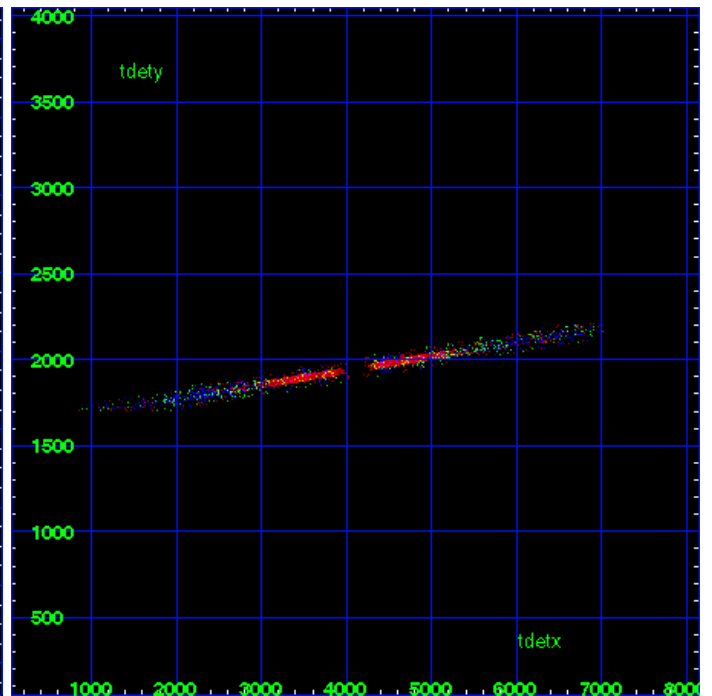
MEG Zero Order



MEG Order Sort ALL

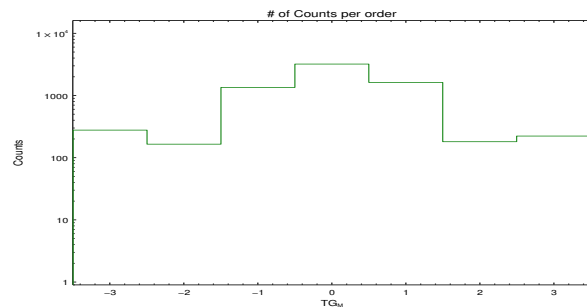


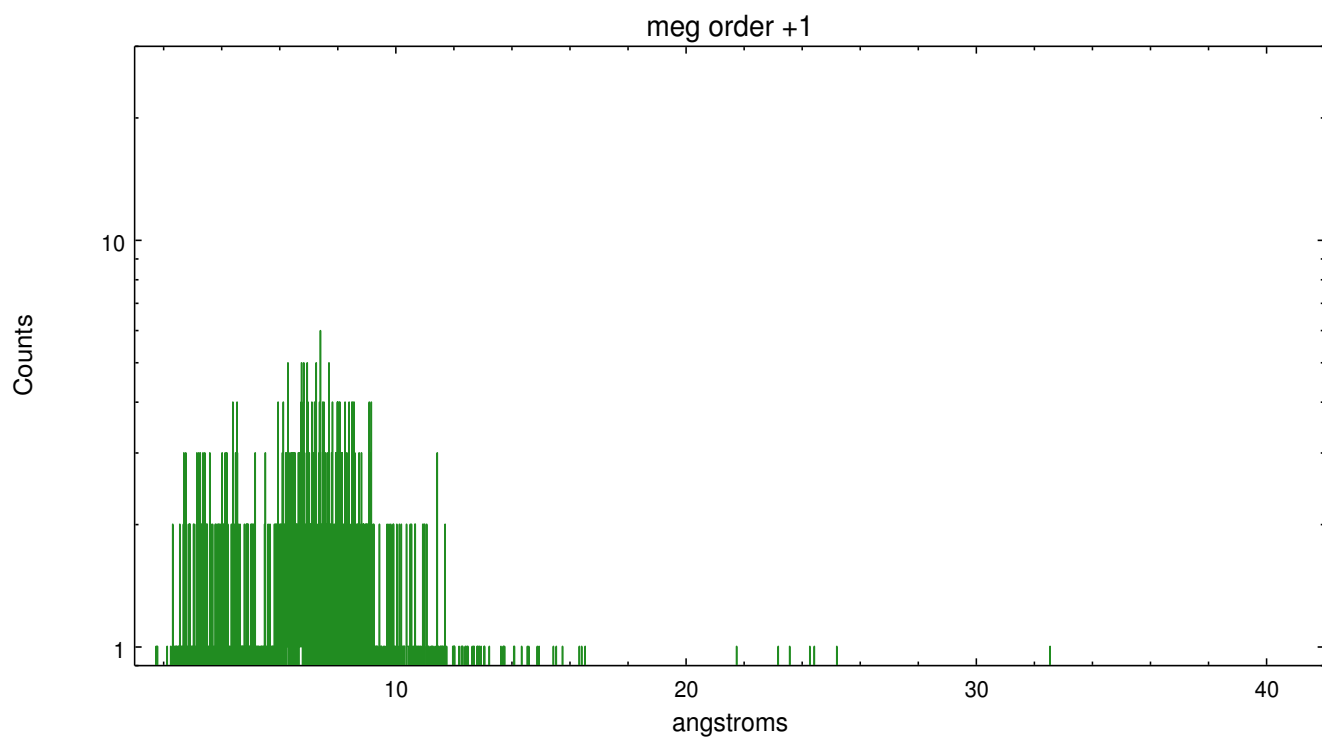
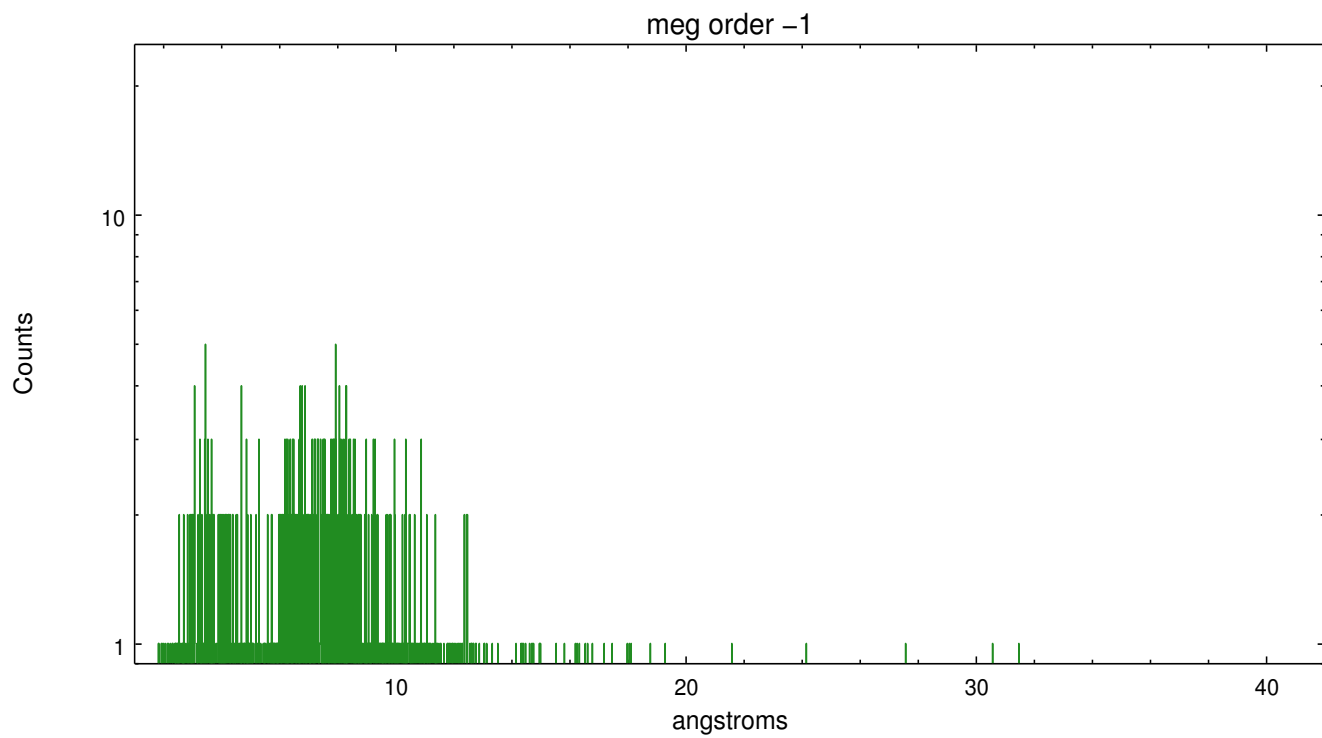
Spot Image MEG



Full Detector MEG

	order -3	order -2	order -1	order 0	order 1	order 2	order 3
Events	278	165	1355	3221	1631	181	223





A Summary

A.1 Status

V&V Scientist	Joy Nichols
V&V Date (YYYY-MM-DD)	2013.01.18
V&V Edition	1
V&V Disposition and Status	OK
V&V Charge Time	21.73279

A.2 Comments