

V&V Reference Report

L2 ASCDS Version : 8.4.3.1

Observation 6560 - L2 Version 2
Chandra X-Ray Center

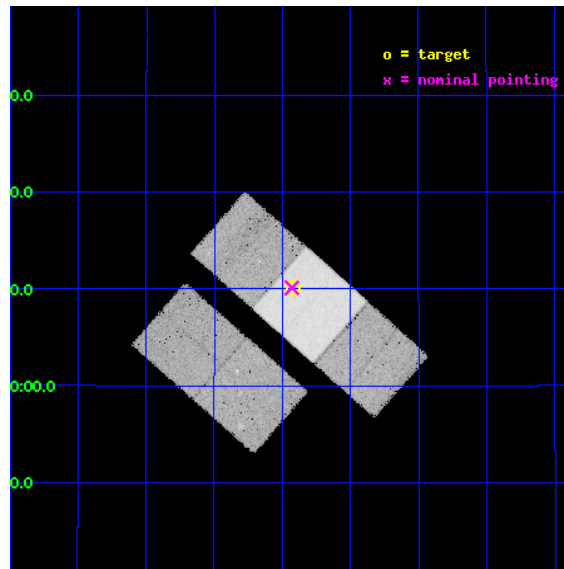
L2 Processing Date : Apr 13 2012

Contents

1	Front	2
2	OBI	3
2.1	OBI	3
2.1.1	Images	3
2.1.2	Bias	3
2.1.3	Parameters	4
2.1.4	Events	4
2.2	Compared Parameters	5
2.3	Aspect	6
2.4	Star Slots	9
2.4.1	Slot 3	9
2.4.2	Slot 4	10
2.4.3	Slot 5	11
2.4.4	Slot 6	12
2.4.5	Slot 7	13
2.5	FID Slots	14
2.5.1	Slot 0	14
2.5.2	Slot 1	15
2.5.3	Slot 2	16
A	Summary	17
A.1	Status	17
A.2	Comments	17

1 Front

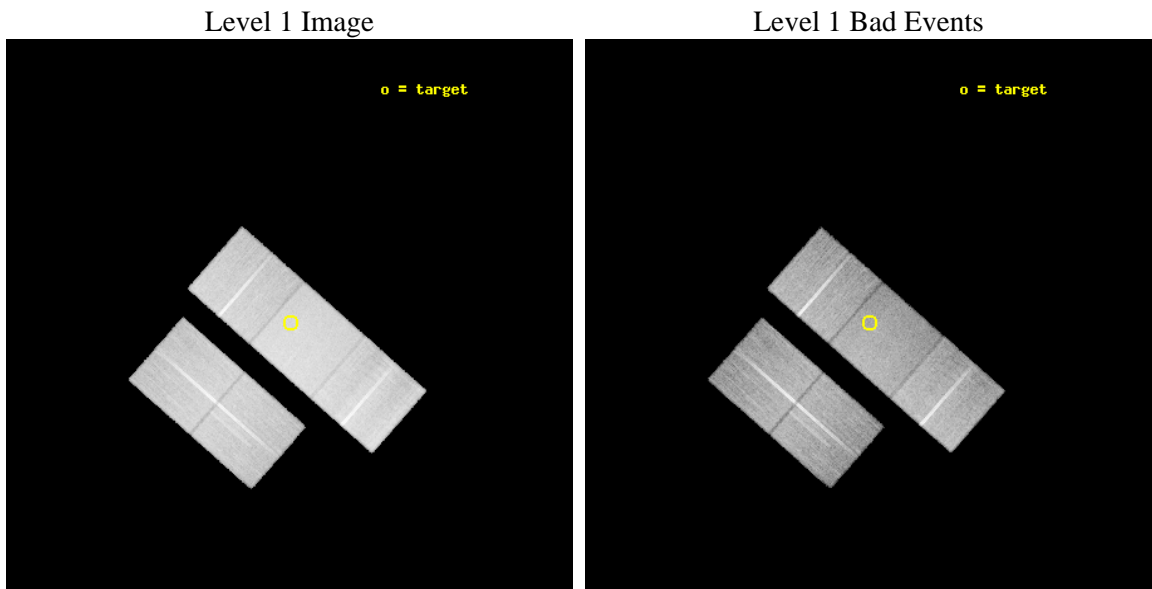
seq_num	300164	Sequence number
obs_id	6560	Observation id
title	CXC study of the globular cluster NGC5024 and its millisecond pulsars	Proposal title
observer	Dr. Peter Predehl	Principal investigator
object	NGC5024	Source name
dtycycle	0	
cycle	P	events from which exps? Prim/Second/Both
ra_targ	198.230417	Observer's specified target RA [deg]
dec_targ	18.169167	Observer's specified target Dec [deg]
ra_nom	198.23255748909	Nominal RA [deg]
dec_nom	18.168744532231	Nominal Dec [deg]
roll_nom	41.393013242856	Nominal Roll [deg]
revision	2	Processing version of data
ontime	24888.967551291	Sum of GTIs [s]
livetime	24563.774867242	Livetime [s]
ontime2	24885.662431002	Sum of GTIs [s]
ontime3	24888.885471284	Sum of GTIs [s]
ontime6	24888.926511288	Sum of GTIs [s]
ontime7	24888.967551291	Sum of GTIs [s]
ontime8	24882.562470734	Sum of GTIs [s]
l2events	221460	Number of level 2 events



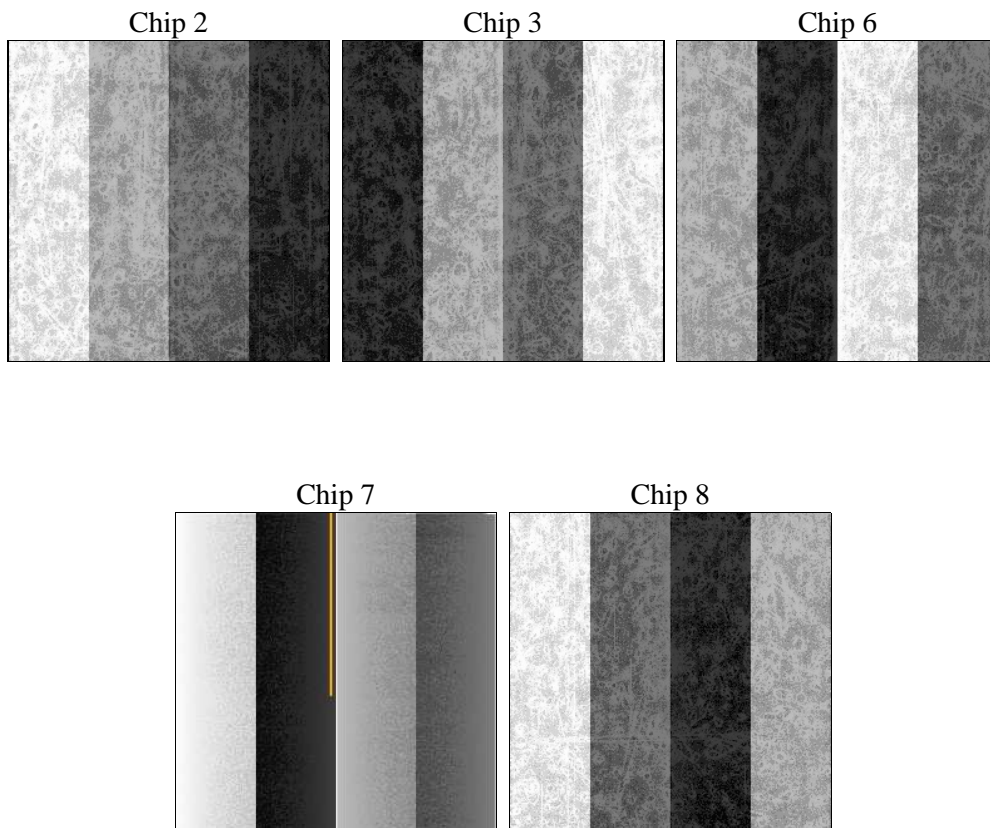
2 OBI

2.1 OBI

2.1.1 Images



2.1.2 Bias



2.1.3 Parameters

obi_num	0	Obi number	sched_exp_time	24856.210000	[s] Scheduled observation exposure time
ascdsver	8.4.3.1	Processing system revision	ontime	24888.967551291	Sum of GTIs [s]
caldbver	4.4.9	 	ontime2	24885.662431002	Sum of GTIs [s]
date	2012-04-13T15:28:30	Date and time of file creation	ontime3	24888.885471284	Sum of GTIs [s]
revision	2	Processing version of data	ontime6	24888.926511288	Sum of GTIs [s]
			ontime7	24888.967551291	Sum of GTIs [s]
			ontime8	24882.562470734	Sum of GTIs [s]
			l1events	1273610	Number of level 1 events

2.1.4 Events

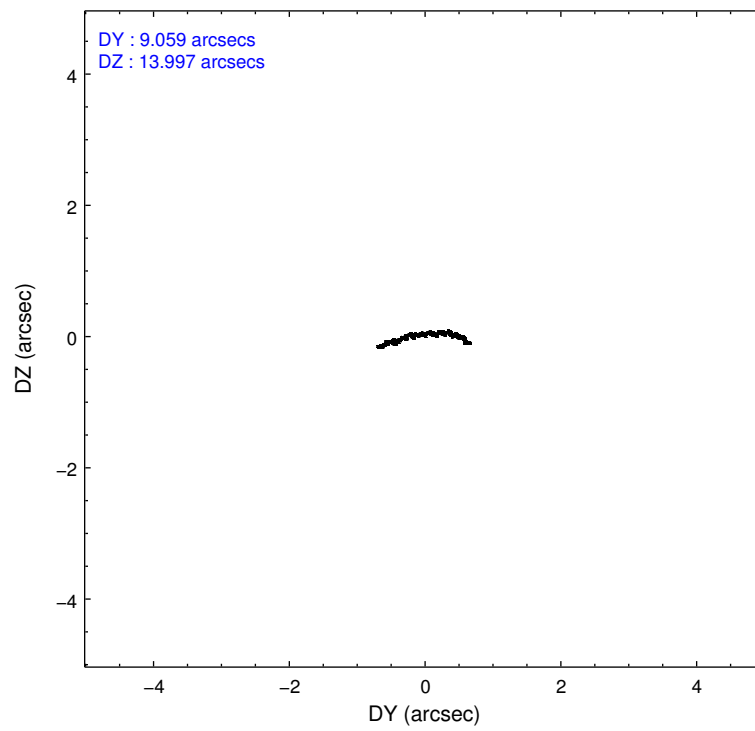
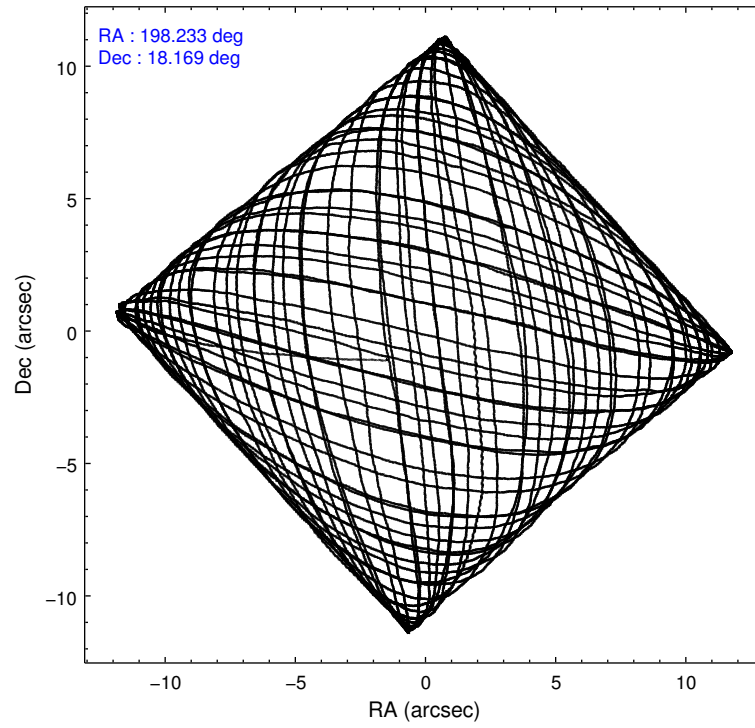
	ccd 2	ccd 3	ccd 6	ccd 7	ccd 8
level 1 events	223598	220831	230596	307702	290883
rejected events	197206	193775	203322	179392	225894
rejected %	88%	87%	88%	58%	77%

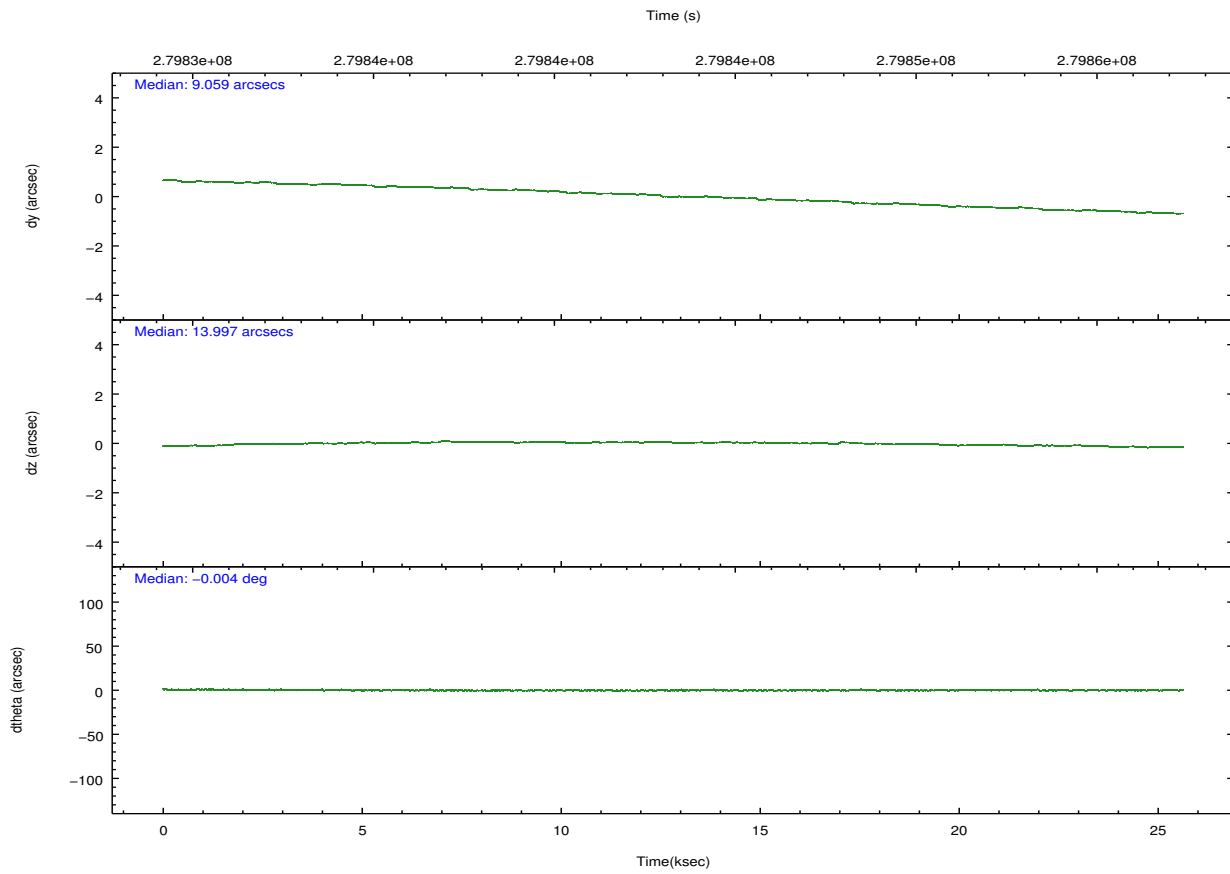
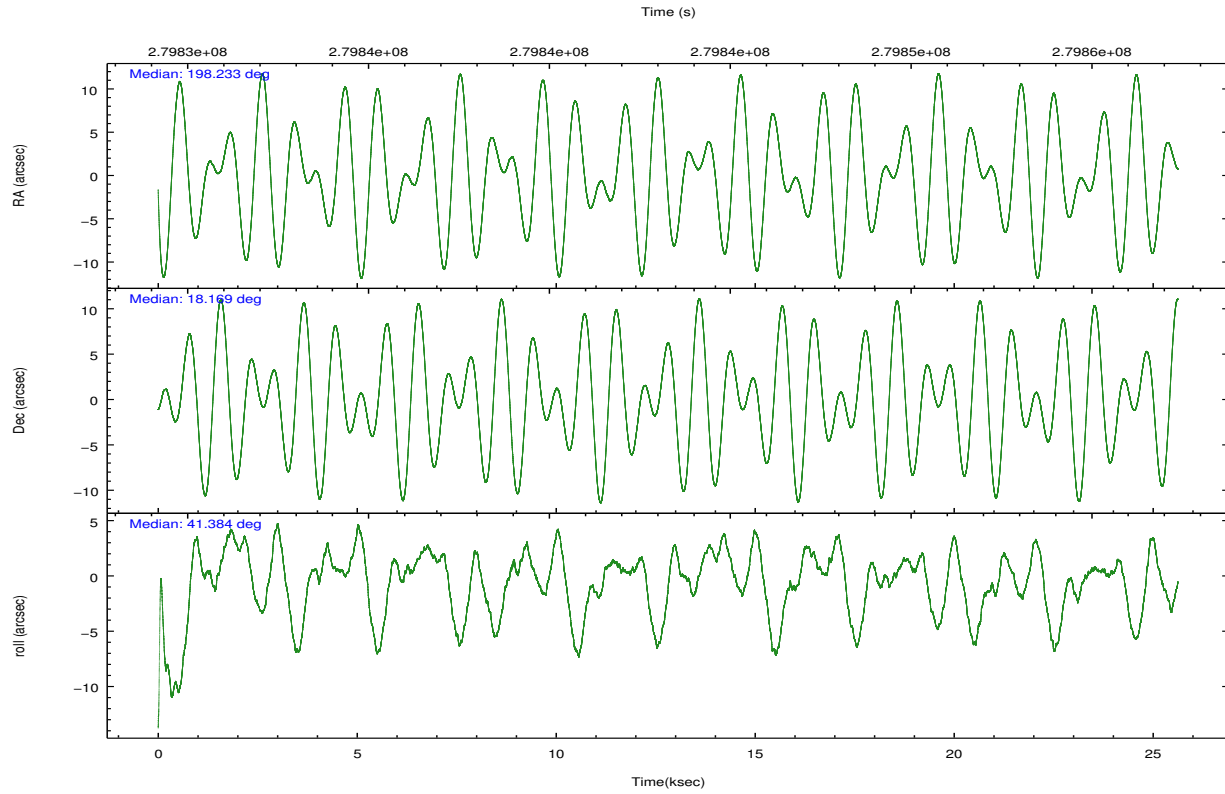
	ccd 2	ccd 3	ccd 6	ccd 7	ccd 8
grade 0 events	11538	11826	10759	11447	20428
	5%	5%	4%	3%	7%
grade 1 events	112	145	124	309	235
	0%	0%	0%	0%	0%
grade 2 events	5538	5349	5890	26046	14368
	2%	2%	2%	8%	4%
grade 3 events	2441	2561	2515	11127	6959
	1%	1%	1%	3%	2%
grade 4 events	2485	2558	2617	11015	6358
	1%	1%	1%	3%	2%
grade 5 events	8485	10206	10610	29696	13965
	3%	4%	4%	9%	4%
grade 6 events	4393	4765	5498	68694	16879
	1%	2%	2%	22%	5%
grade 7 events	188606	183421	192583	149368	211691
	84%	83%	83%	48%	72%

2.2 Compared Parameters

Parameter	Planned	Actual	Parameter	Planned	Actual
Instrument	ACIS	ACIS	Obspar format version number	7	7
Detector	ACIS-23678	ACIS-23678	Obspar file type	PREDICTED	ACTUAL
Grating	NONE	NONE	Obspar update status	NONE	UPDATED
Data mode	VFAINT	VFAINT	Number of optional ACIS chips dropped	0	0
Observation mode	POINTING	POINTING	On-chip summing requested	N	N
[deg] Pointing RA	198.223786	198.2325574890911	Subarray requested	NONE	NONE
[deg] Pointing Dec	18.142811	18.16874453223114	Alternating exposures requested	N	N
[deg] Pointing Roll	41.239123	41.39301324285582	[s] Primary exposure time	0.000000	3.1
[mm] SIM focus pos	-0.684267	-0.6828225247311905			
[mm] SIM defocus	0	0.001444936568705701			
[mm] SIM translation stage pos	-190.132523	-190.1400660498719			
[mm] SIM translation stage offset	0	0.00754346686406393			
[s] Observation start time (MET)	279831230.184000	279830007.63306			
Observation start date	2006-11-13T18:52:45	2006-11-13T18:33:27			
[s] Observation end time (MET)	279856086.184000	279856313.23431			
Observation end date	2006-11-14T01:47:01	2006-11-14T01:51:53			
Read mode	TIMED	TIMED			

2.3 Aspect



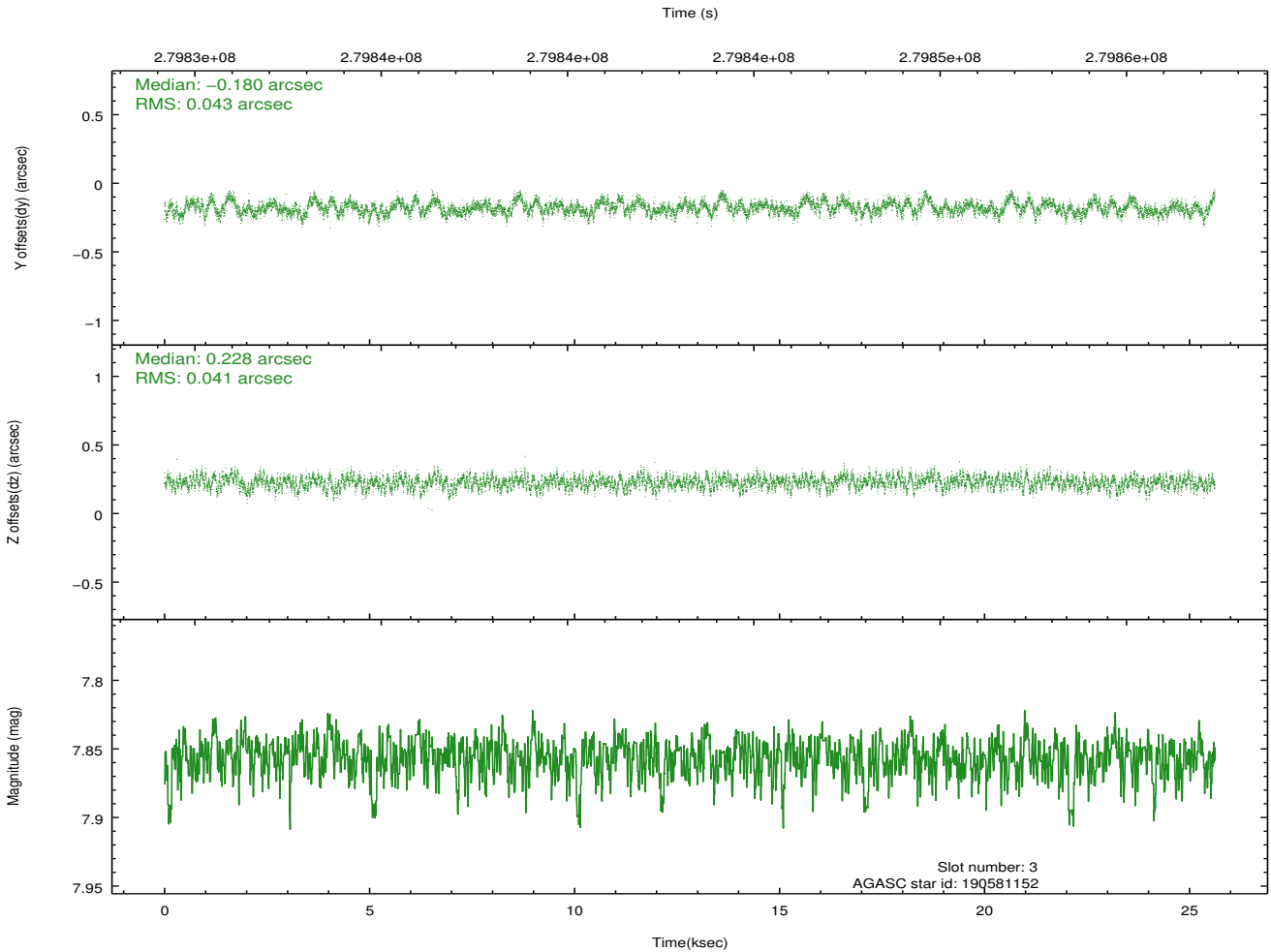
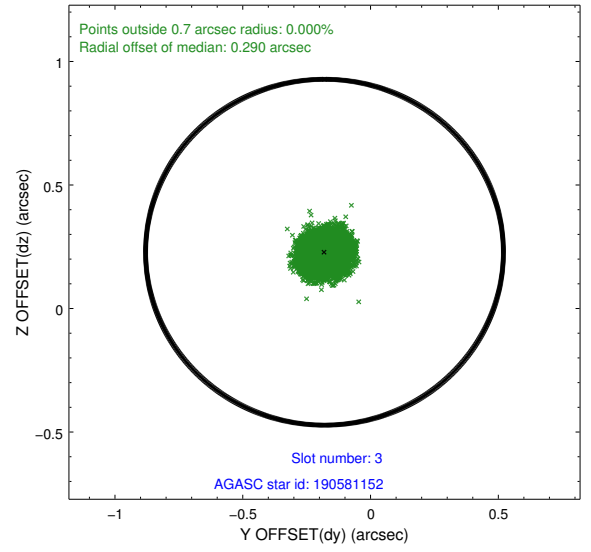
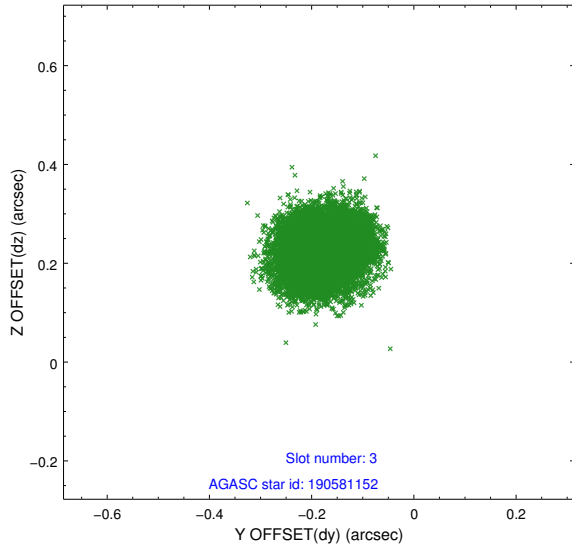


Slot Statistics

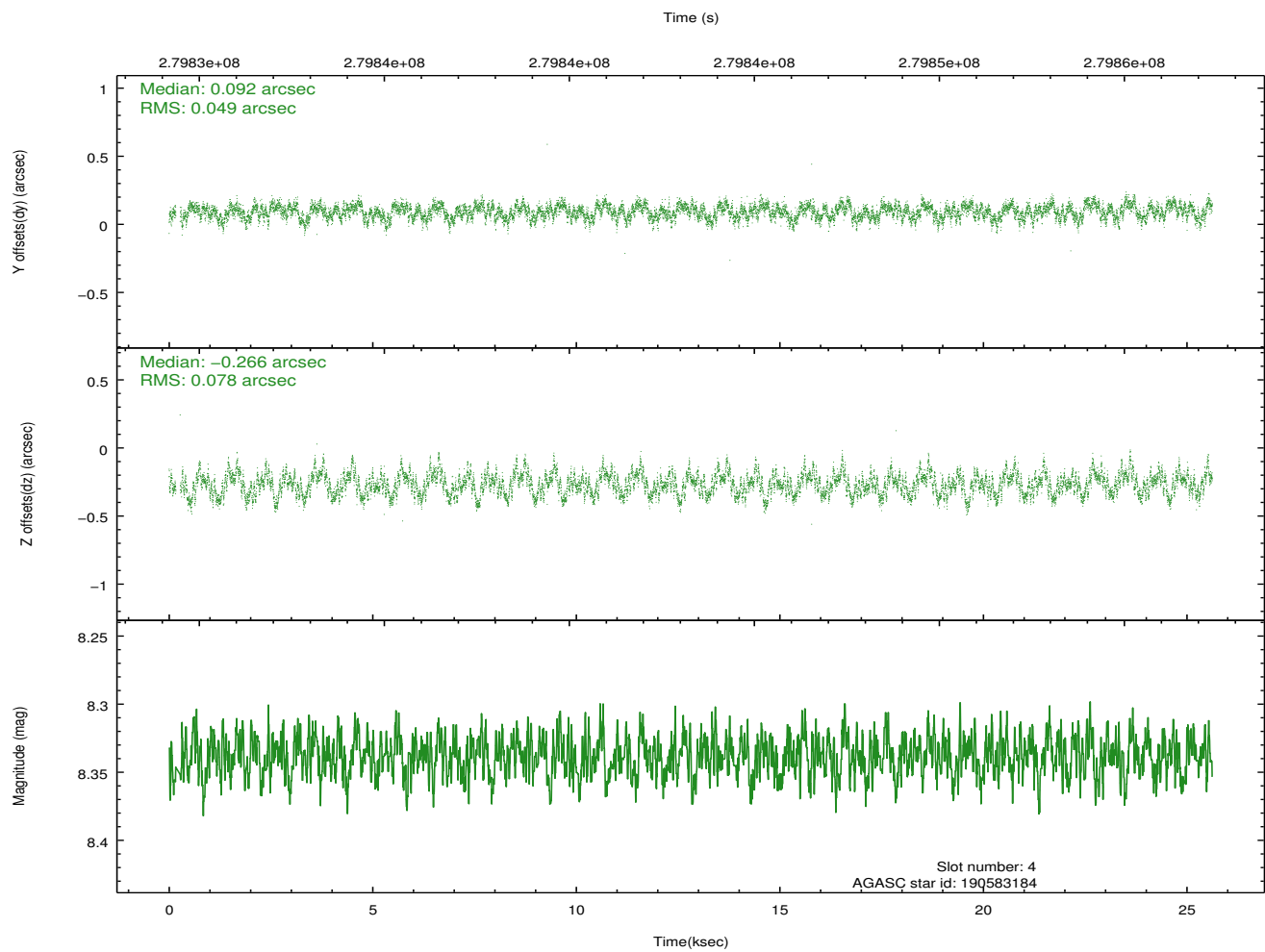
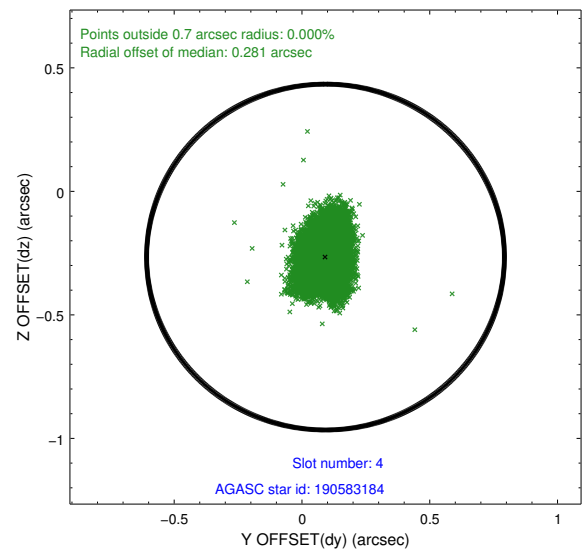
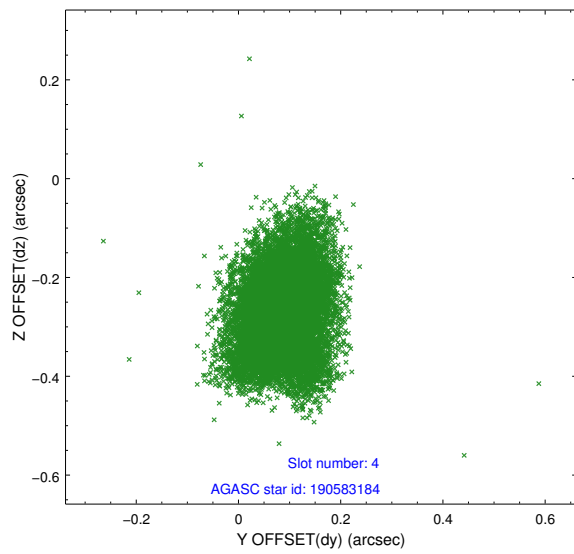
slot	status	id	mag	n_pts	med_dy	med_dz	dr1	dr2	ra	dec	mean_y	mean_z
0	FID	ACIS-S-2	7.11	6250	-0.034	-0.057	0.011	0.017	0.000000	0.000000	-761.91	-1735.39
1	FID	ACIS-S-4	7.20	6250	0.151	0.032	0.019	0.030	0.000000	0.000000	2151.50	173.07
2	FID	ACIS-S-5	7.24	6250	-0.148	0.034	0.014	0.021	0.000000	0.000000	-1814.73	166.86
3	GUIDE	190581152	7.86	12500	-0.180	0.228	0.064	0.101	198.286221	18.024635	-119.66	-460.52
4	GUIDE	190583184	8.34	12445	0.092	-0.266	0.098	0.161	198.088564	18.713334	1007.00	1848.81
5	GUIDE	190585192	6.48	12498	-0.383	-0.034	0.069	0.105	198.149609	18.751777	1254.63	1815.63
6	GUIDE	190585760	10.09	12459	0.278	0.123	0.167	0.264	198.310167	18.033502	-36.61	-490.63
7	GUIDE	190587184	9.89	12431	0.196	-0.046	0.149	0.237	197.951309	18.379125	-139.09	1251.72

2.4 Star Slots

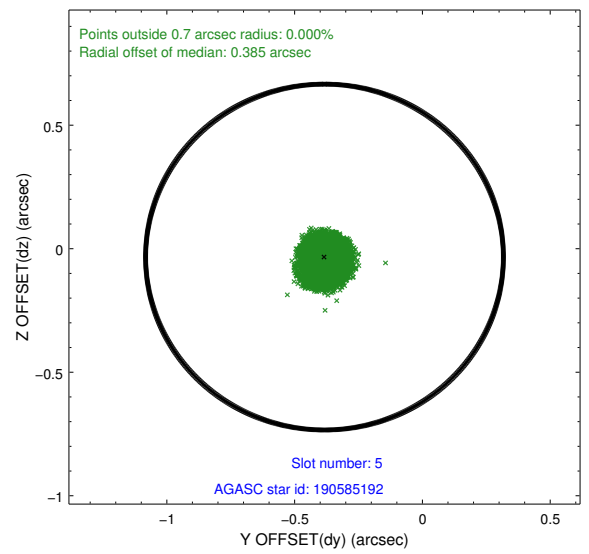
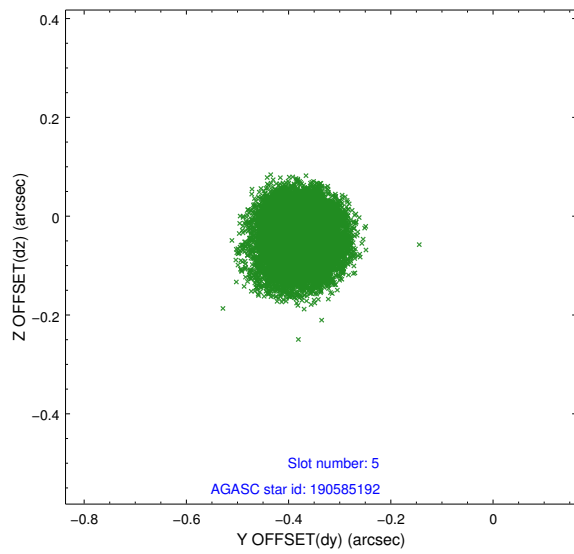
2.4.1 Slot 3



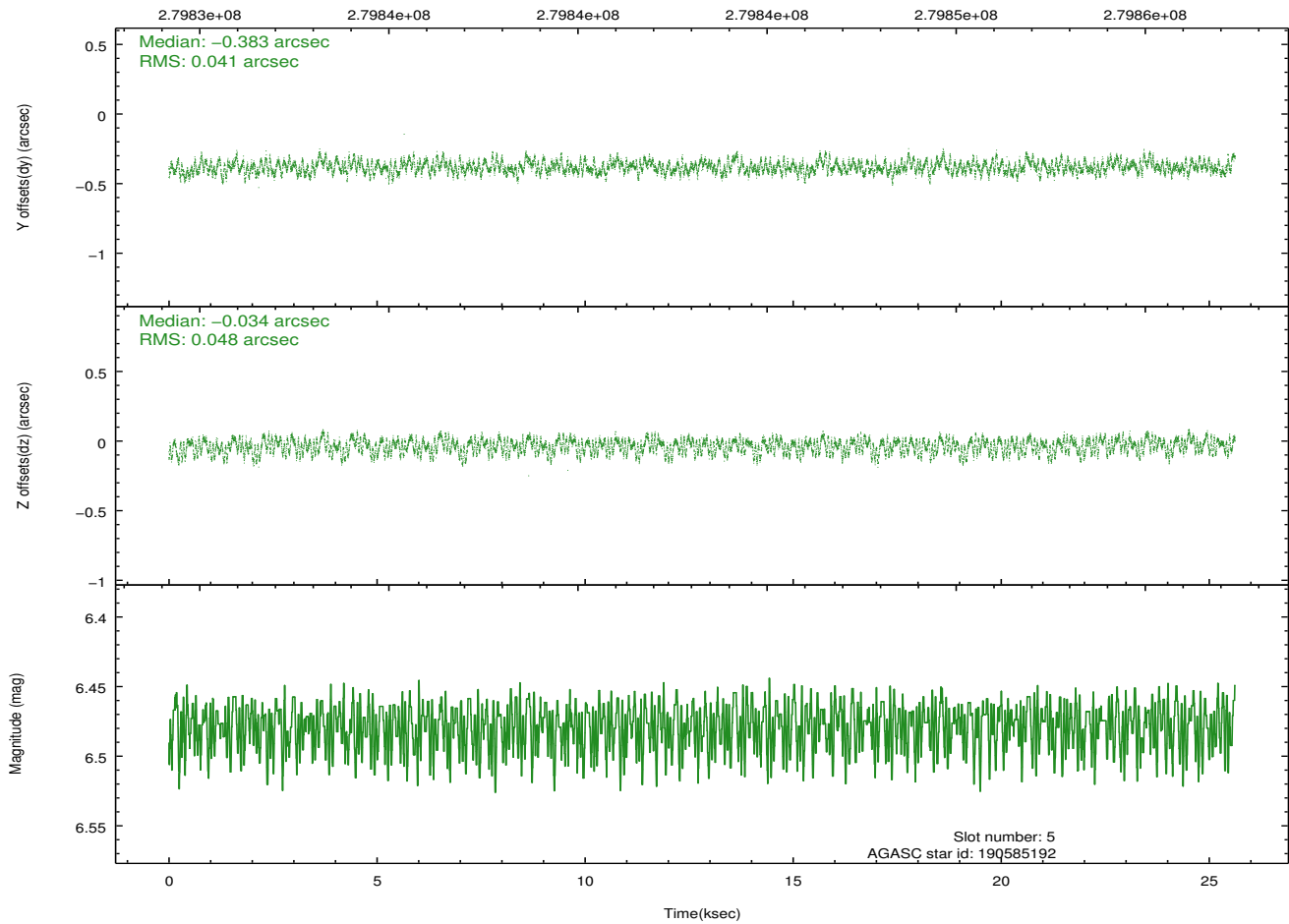
2.4.2 Slot 4



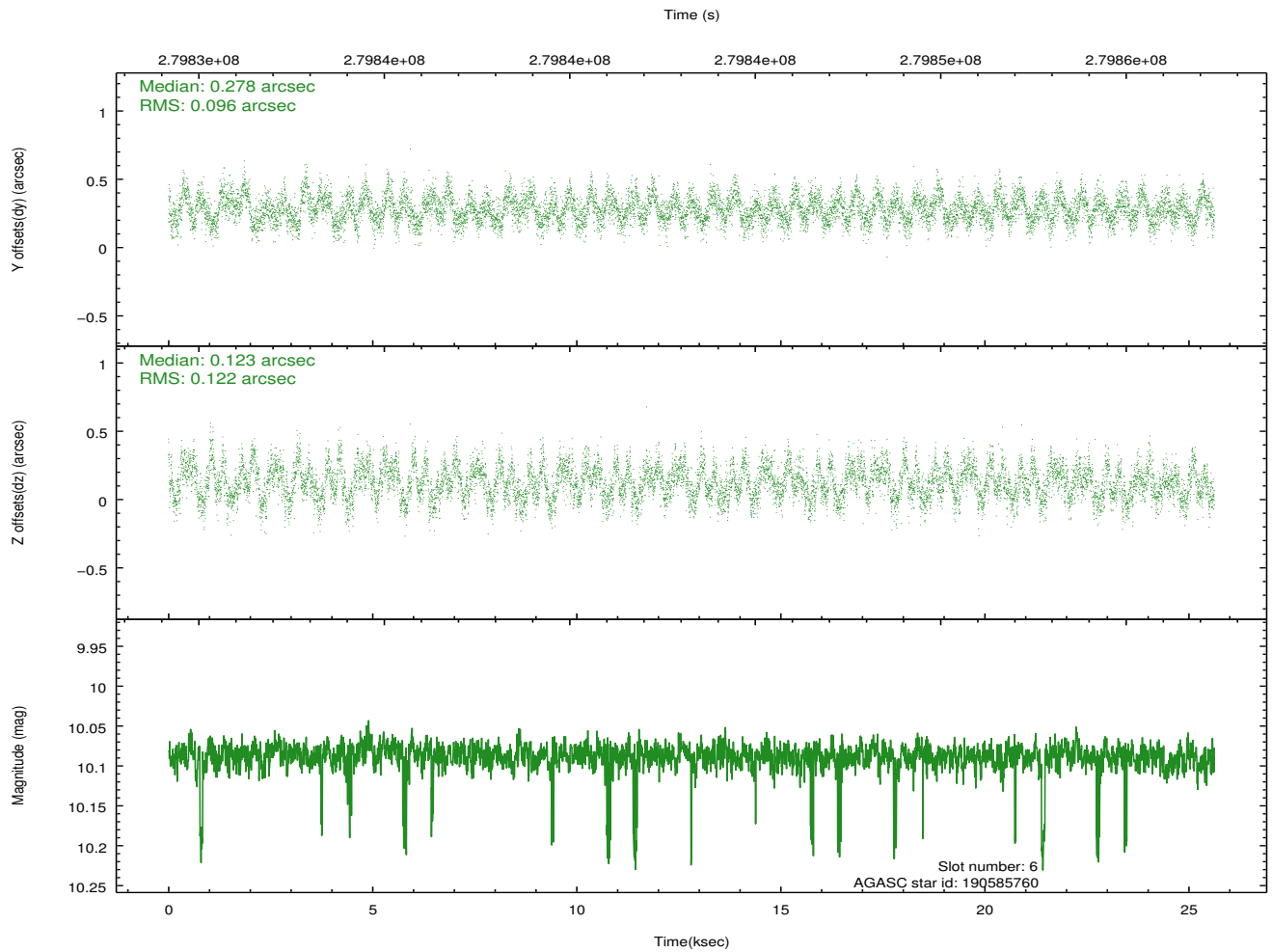
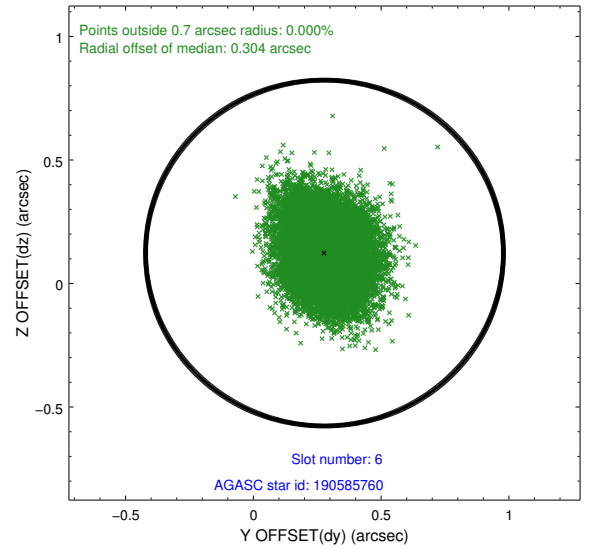
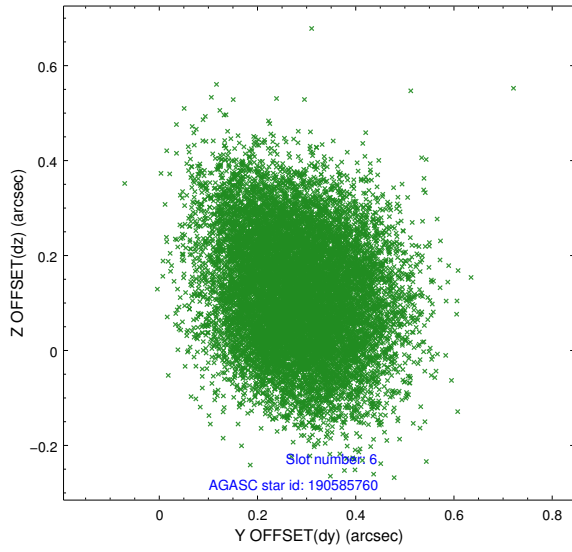
2.4.3 Slot 5



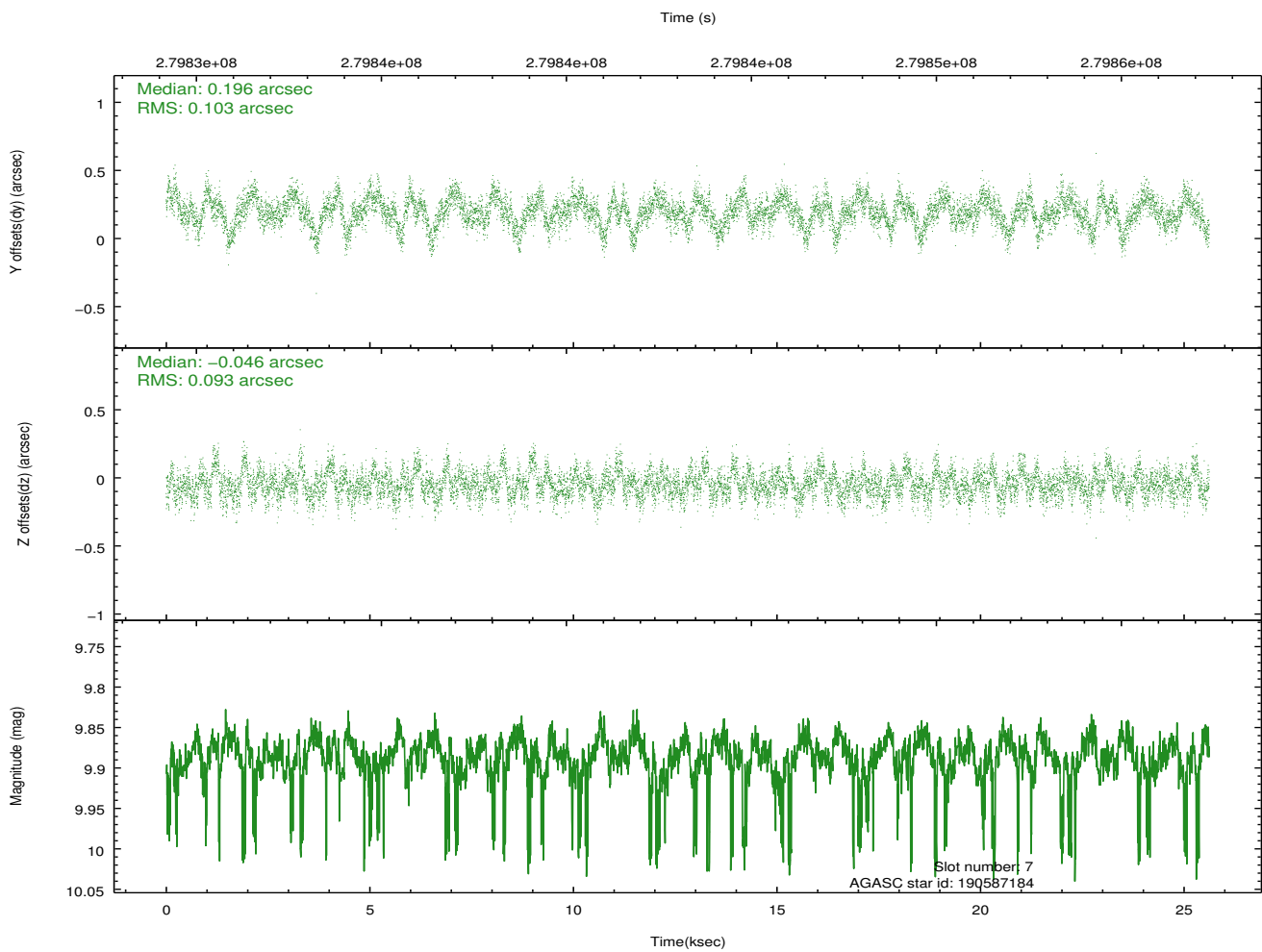
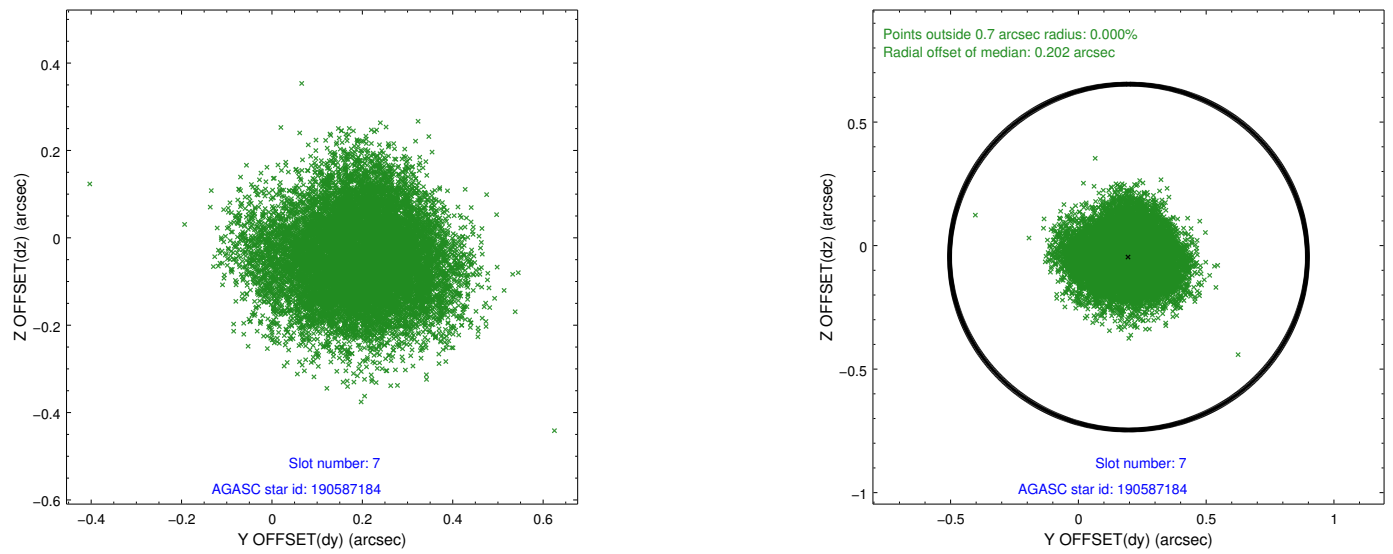
Time (s)



2.4.4 Slot 6

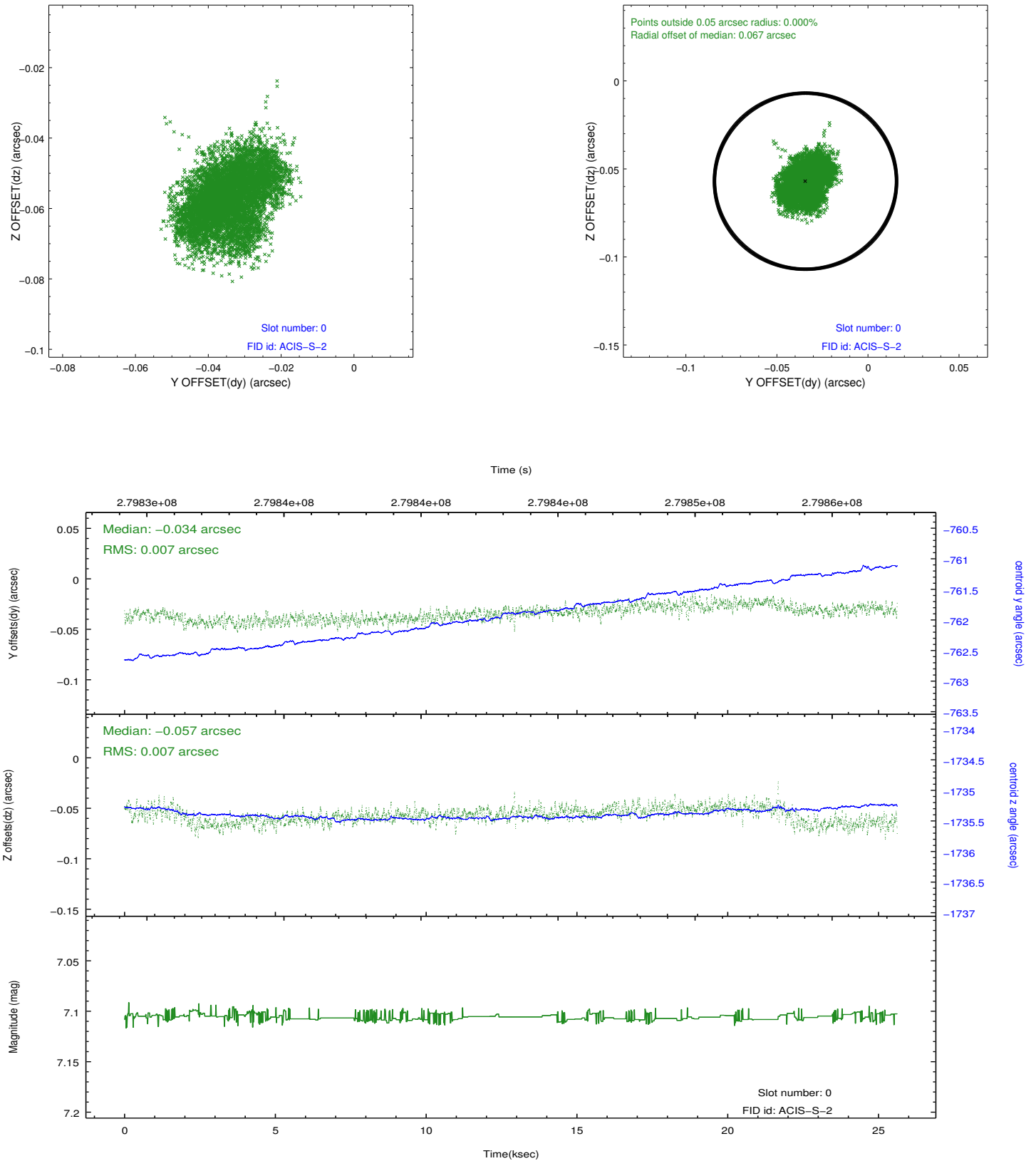


2.4.5 Slot 7

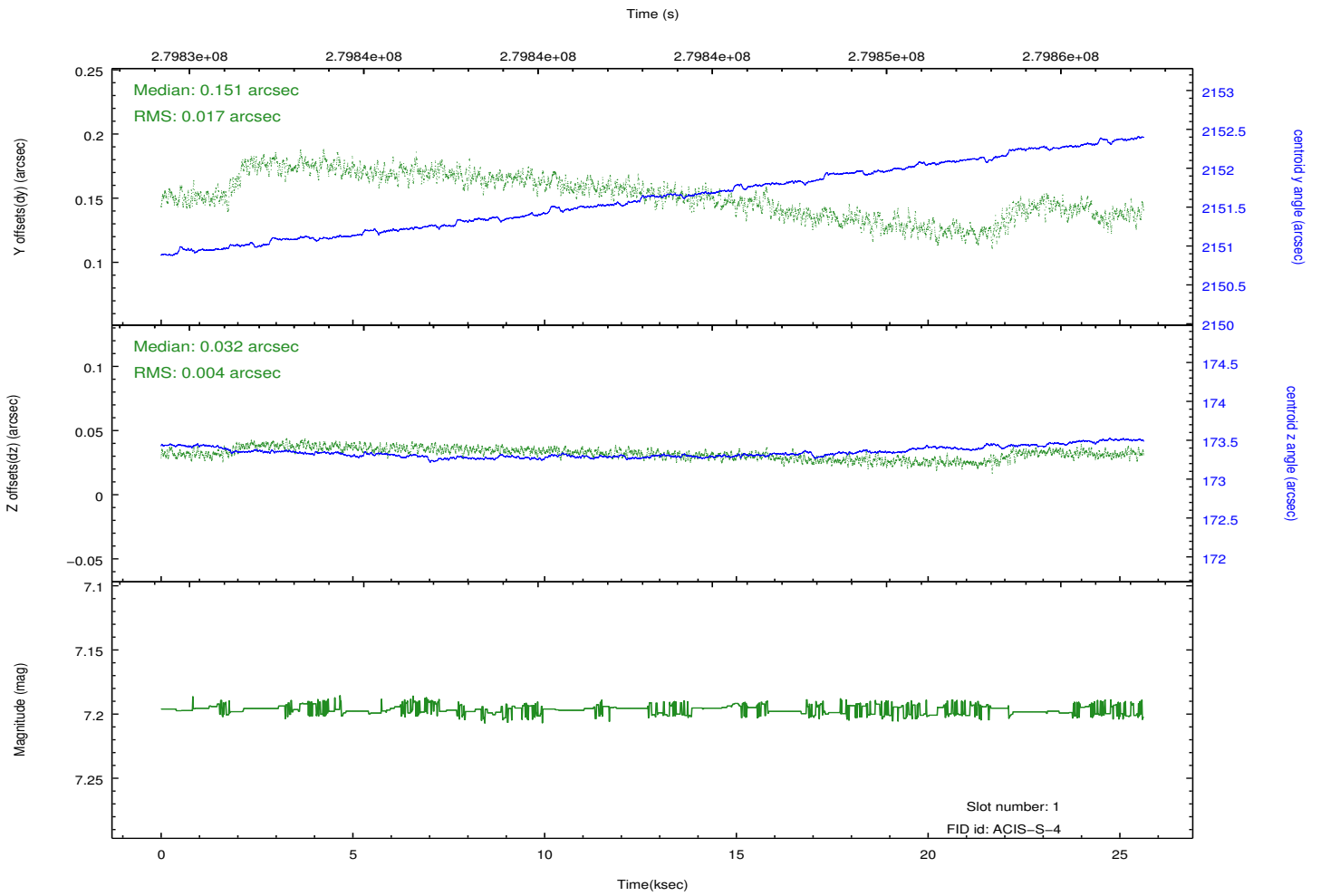
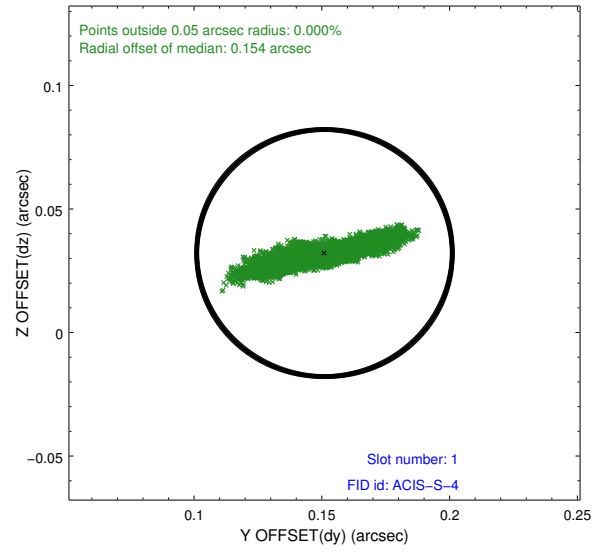
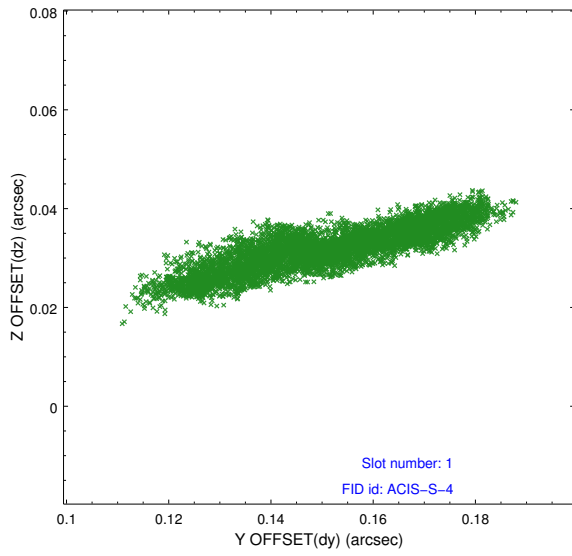


2.5 FID Slots

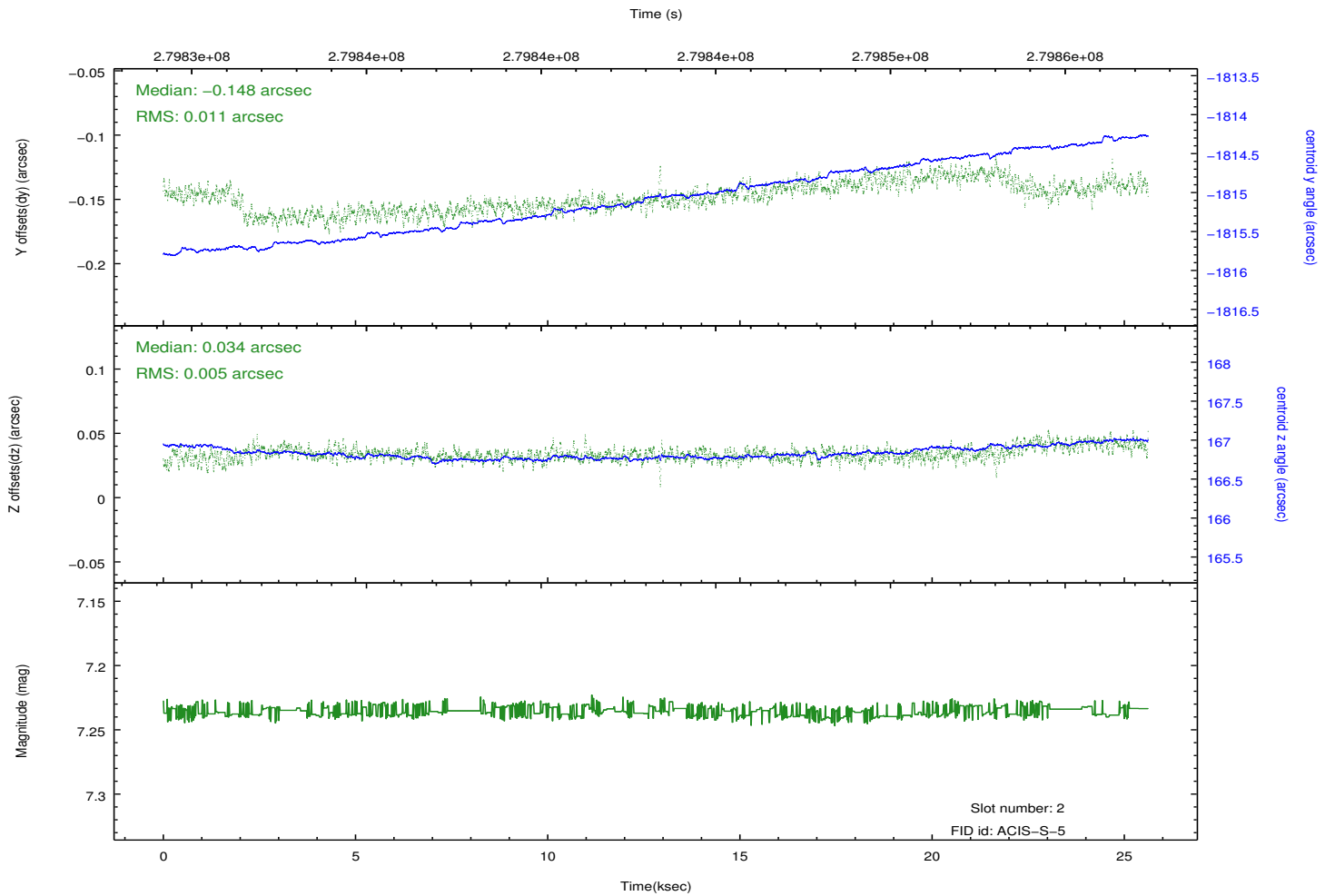
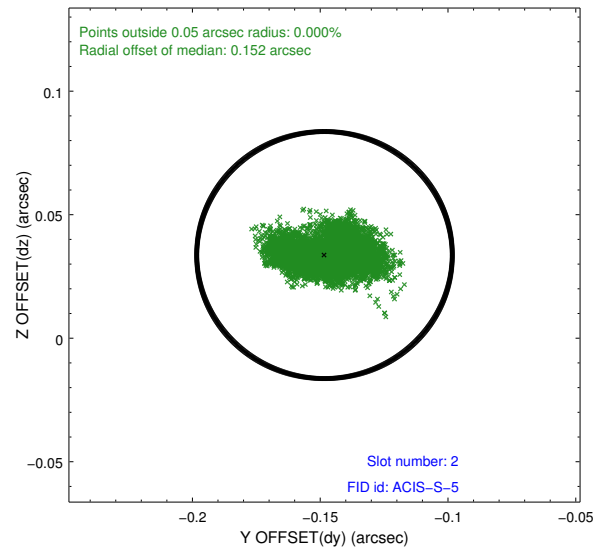
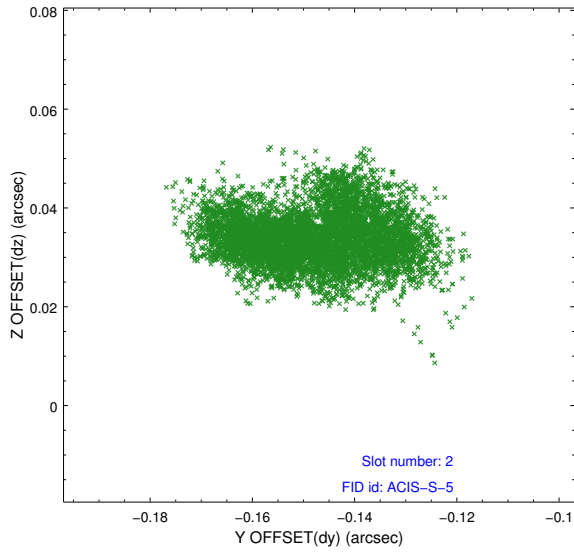
2.5.1 Slot 0



2.5.2 Slot 1



2.5.3 Slot 2



A Summary

A.1 Status

V&V Scientist	Beth Sundheim
V&V Date (YYYY-MM-DD)	2012.04.16
V&V Edition	1
V&V Disposition and Status	OK
V&V Charge Time	24.8899001

A.2 Comments