

V&V Reference Report

L2 ASCDS Version : 8.4.3.1

Observation 6710 - L2 Version 2
Chandra X-Ray Center

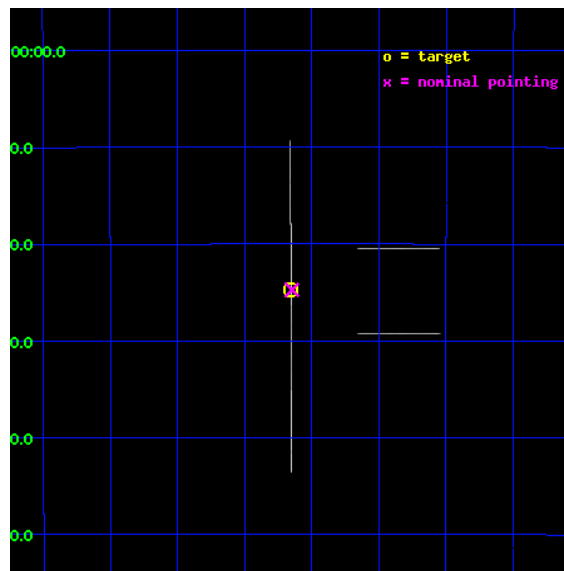
L2 Processing Date : Apr 8 2012

Contents

1	Front	2
2	OBI	3
2.1	OBI	3
2.1.1	Images	3
2.1.2	Bias	3
2.1.3	Parameters	4
2.1.4	Events	4
2.2	Compared Parameters	5
2.3	Aspect	6
2.4	Star Slots	9
2.4.1	Slot 3	9
2.4.2	Slot 4	10
2.4.3	Slot 5	11
2.4.4	Slot 6	12
2.4.5	Slot 7	13
2.5	FID Slots	14
2.5.1	Slot 0	14
2.5.2	Slot 1	15
2.5.3	Slot 2	16
A	Summary	17
A.1	Status	17
A.2	Comments	17

1 Front

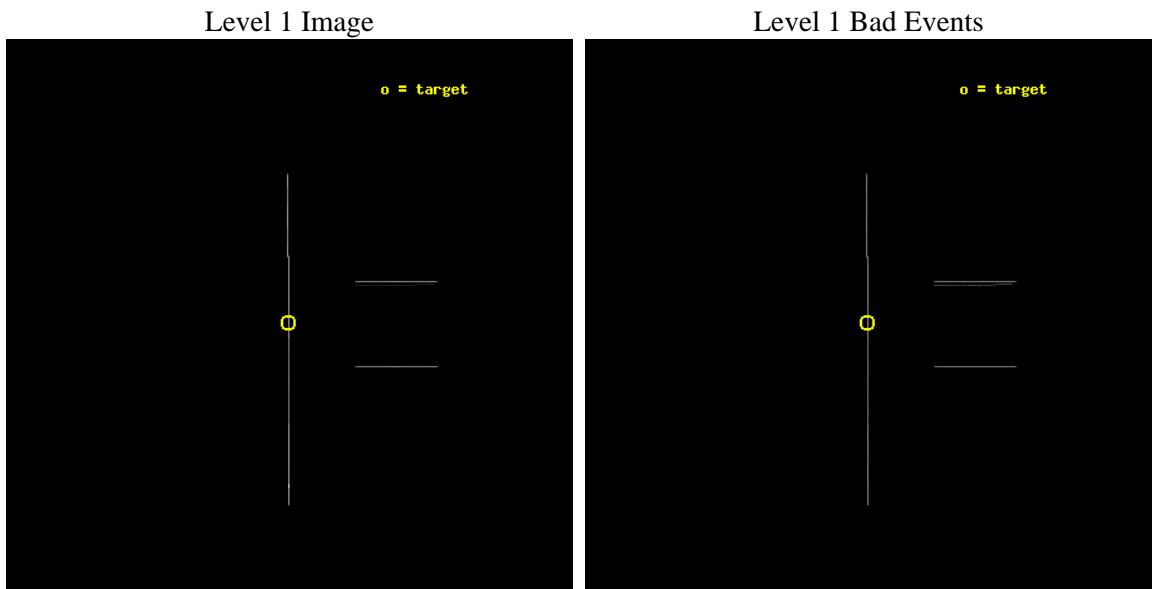
seq_num	500661	Sequence number
obs_id	6710	Observation id
title	ToO Observations of Soft Gamma Repeaters	Proposal title
observer	Dr. Peter Woods	Principal investigator
object	SGR 1806-20	Source name
ra_targ	272.16375	Observer's specified target RA [deg]
dec_targ	-20.410972	Observer's specified target Dec [deg]
ra_nom	272.16195593625	Nominal RA [deg]
dec_nom	-20.412217652745	Nominal Dec [deg]
roll_nom	269.74360447199	Nominal Roll [deg]
revision	2	Processing version of data
ontime	40175.0	Sum of GTIs [s]
livetime	40018.06640625	Livetime [s]
ontime2	40175.0	Sum of GTIs [s]
ontime3	40175.0	Sum of GTIs [s]
ontime5	40175.0	Sum of GTIs [s]
ontime6	40175.0	Sum of GTIs [s]
ontime7	40175.0	Sum of GTIs [s]
ontime8	40175.0	Sum of GTIs [s]
l2events	663249	Number of level 2 events



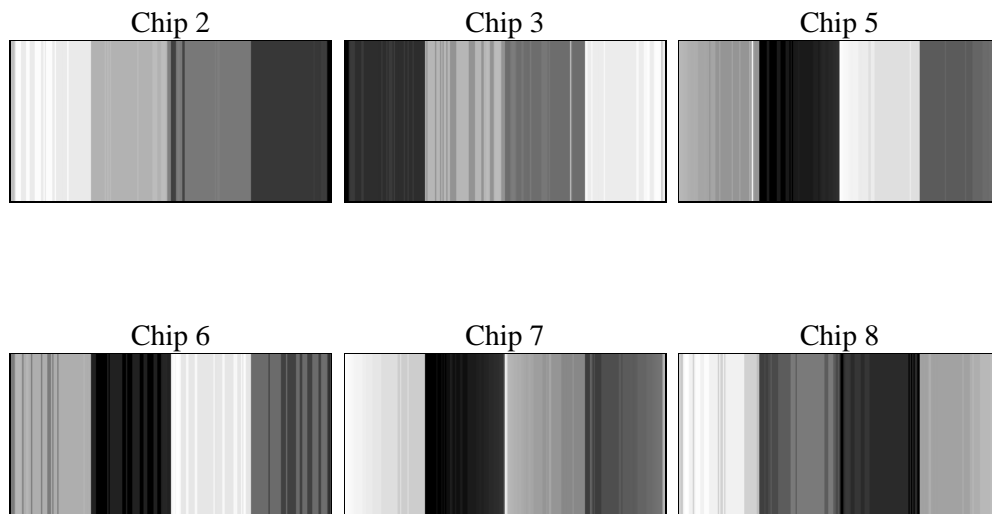
2 OBI

2.1 OBI

2.1.1 Images



2.1.2 Bias



2.1.3 Parameters

obi_num	0	Obi number	sched_exp_time	40000.000000	[s] Scheduled observation exposure time
ascdsver	8.4.3.1	Processing system revision	ontime	40175.0	Sum of GTIs [s]
caldbver	4.4.9	 	ontime2	40175.0	Sum of GTIs [s]
date	2012-04-08T19:07:28	Date and time of file creation	ontime3	40175.0	Sum of GTIs [s]
revision	2	Processing version of data	ontime5	40175.0	Sum of GTIs [s]
			ontime6	40175.0	Sum of GTIs [s]
			ontime7	40175.0	Sum of GTIs [s]
			ontime8	40175.0	Sum of GTIs [s]
			l1events	1214847	Number of level 1 events

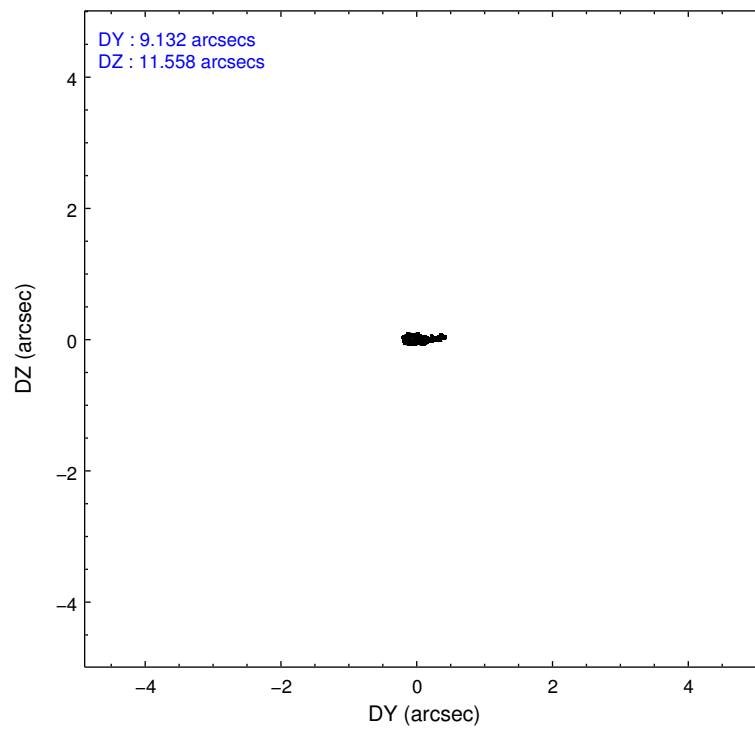
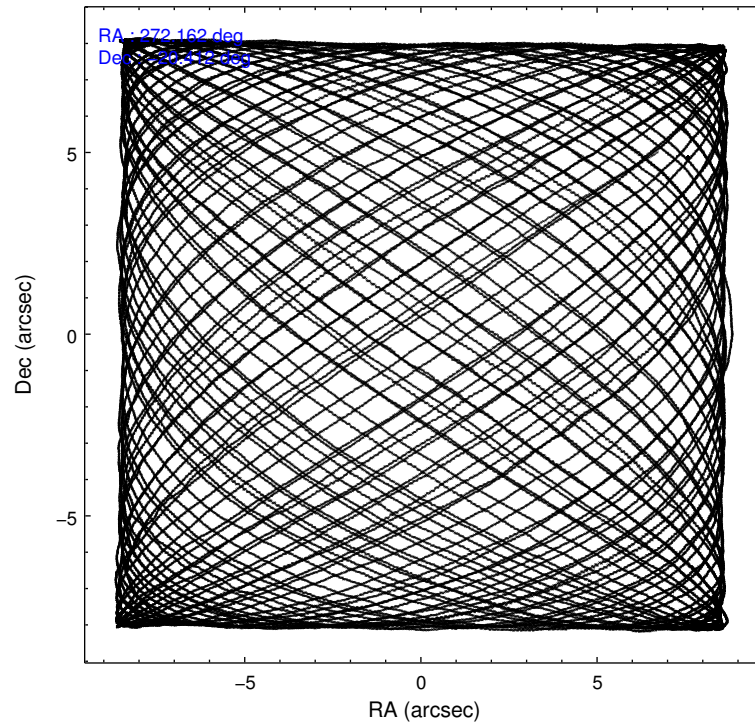
2.1.4 Events

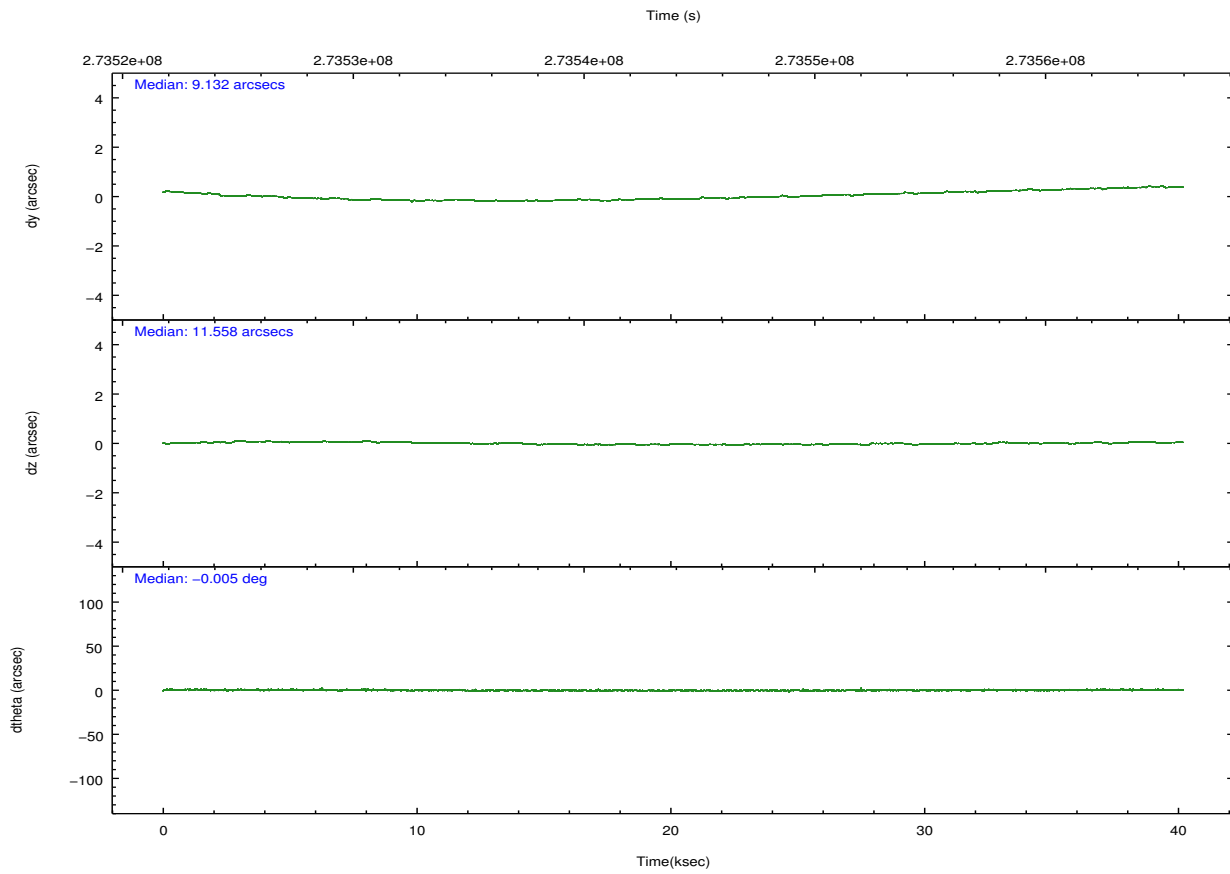
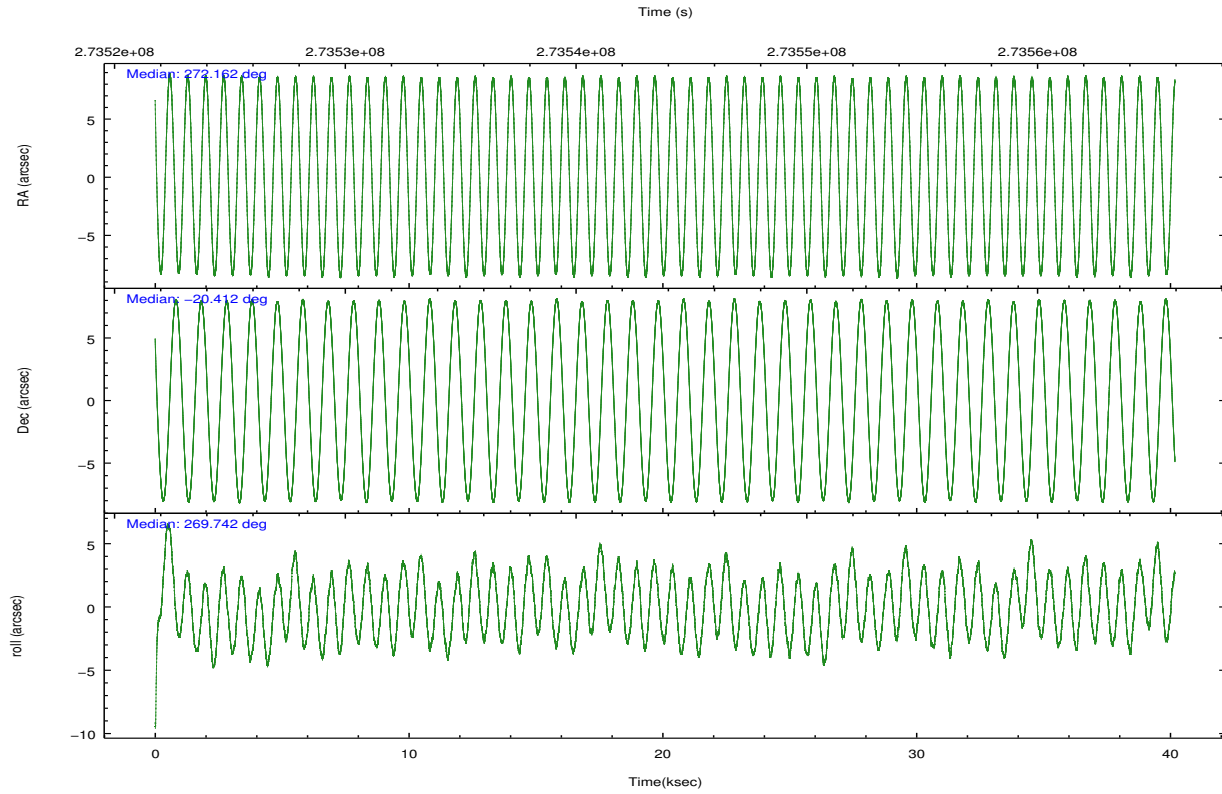
	ccd 2	ccd 3	ccd 5	ccd 6	ccd 7	ccd 8		ccd 2	ccd 3	ccd 5	ccd 6	ccd 7	ccd 8
level 1 events	73611	80887	560040	81924	252657	165728	grade 0 events	9137	9202	211889	8278	19375	29537
rejected events	14058	16198	37591	16917	41735	24466		12%	11%	37%	10%	7%	17%
rejected %	19%	20%	6%	20%	16%	14%	grade 1 events	324	338	618	330	587	553
								0%	0%	0%	0%	0%	0%
							grade 2 events	23582	25316	158516	26238	54506	44586
								32%	31%	28%	32%	21%	26%
							grade 3 events	7748	9011	6700	8097	14458	16486
								10%	11%	1%	9%	5%	9%
							grade 4 events	7810	7938	6559	7763	14215	15633
								10%	9%	1%	9%	5%	9%
							grade 5 events	12891	14908	32228	15714	38288	21822
								17%	18%	5%	19%	15%	13%
							grade 6 events	12119	14174	143530	15504	111228	37111
								16%	17%	25%	18%	44%	22%
							grade 7 events	0	0	0	0	0	0
								0%	0%	0%	0%	0%	0%

2.2 Compared Parameters

Parameter	Planned	Actual	Parameter	Planned	Actual
Instrument	ACIS	ACIS	Obspar format version number	7	7
Detector	ACIS-235678	ACIS-235678	Obspar file type	PREDICTED	ACTUAL
Grating	NONE	NONE	Obspar update status	NONE	UPDATED
Data mode	CC33_FAINT	CC33_FAINT	Number of optional ACIS chips dropped	0	0
Observation mode	POINTING	POINTING	On-chip summing requested	N	N
[deg] Pointing RA	272.147207	272.1619559362516	Subarray requested	NONE	NONE
[deg] Pointing Dec	-20.388747	-20.41221765274465	Alternating exposures requested	N	N
[deg] Pointing Roll	269.581829	269.743604471991	[s] Primary exposure time	0.000000	0
[mm] SIM focus pos	-0.684267	-0.6828225247311905			
[mm] SIM defocus	0	0.001444936568705701			
[mm] SIM translation stage pos	-190.132523	-190.1400660498719			
[mm] SIM translation stage offset	0	0.00754346686406393			
[s] Observation start time (MET)	273523951.184000	273523127.49842			
Observation start date	2006-09-01T18:51:26	2006-09-01T18:38:47			
[s] Observation end time (MET)	273563951.184000	273565740.85043			
Observation end date	2006-09-02T05:58:06	2006-09-02T06:29:00			
Read mode	CONTINUOUS	CONTINUOUS			

2.3 Aspect



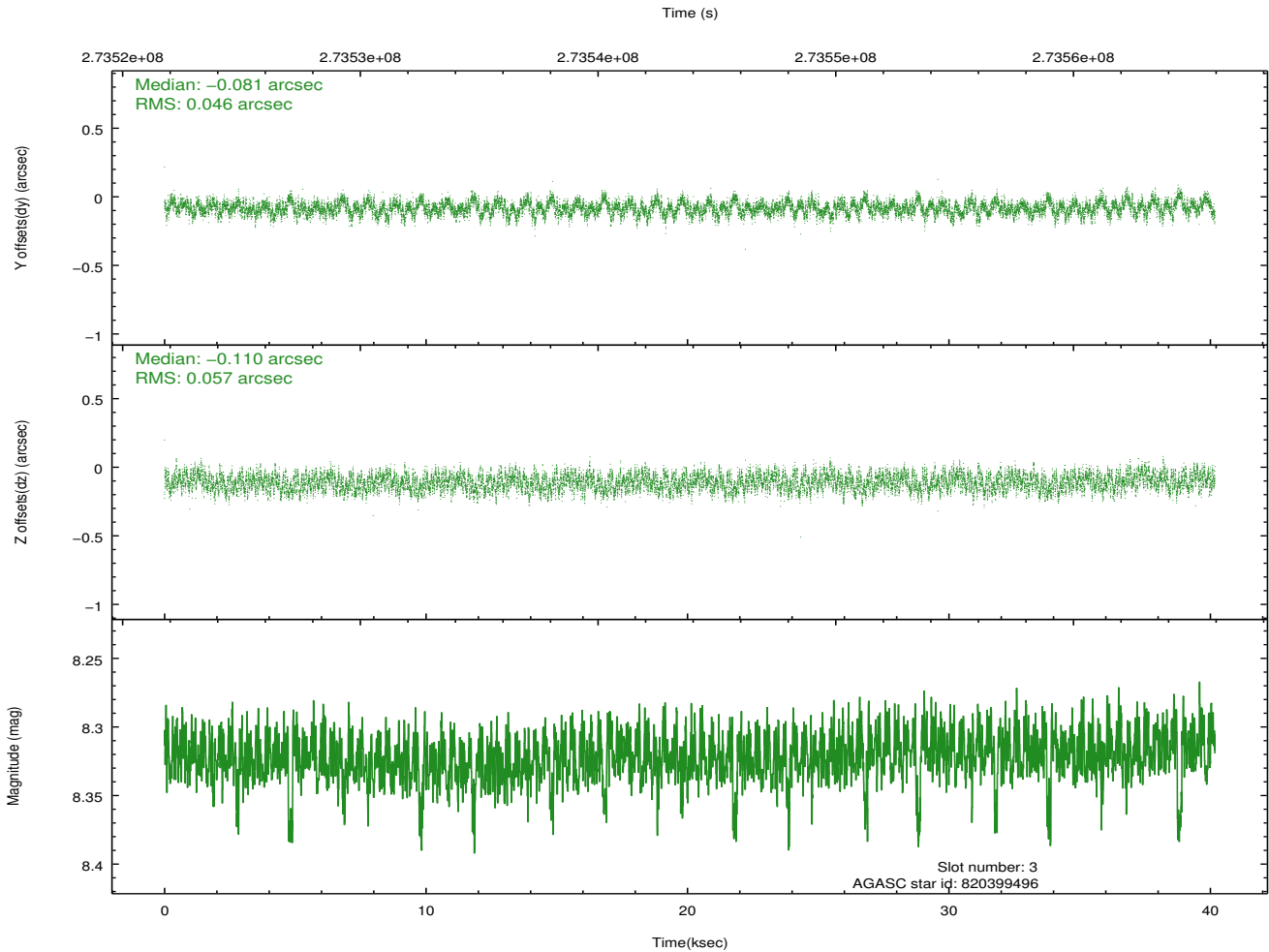
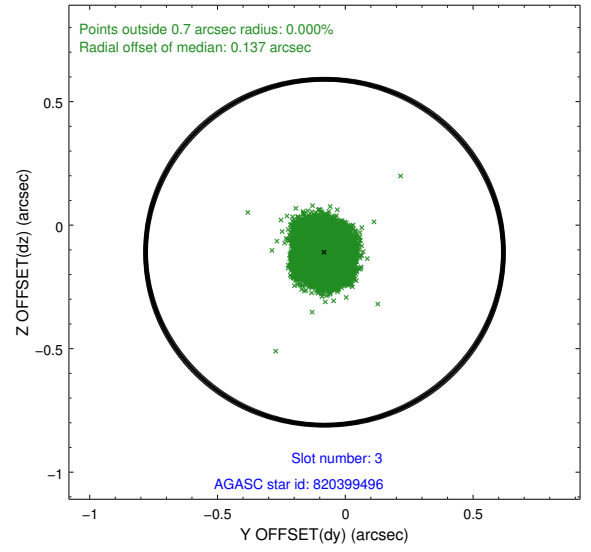
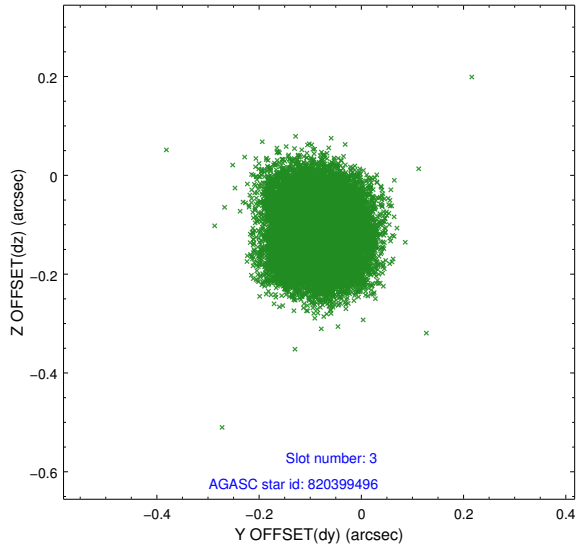


Slot Statistics

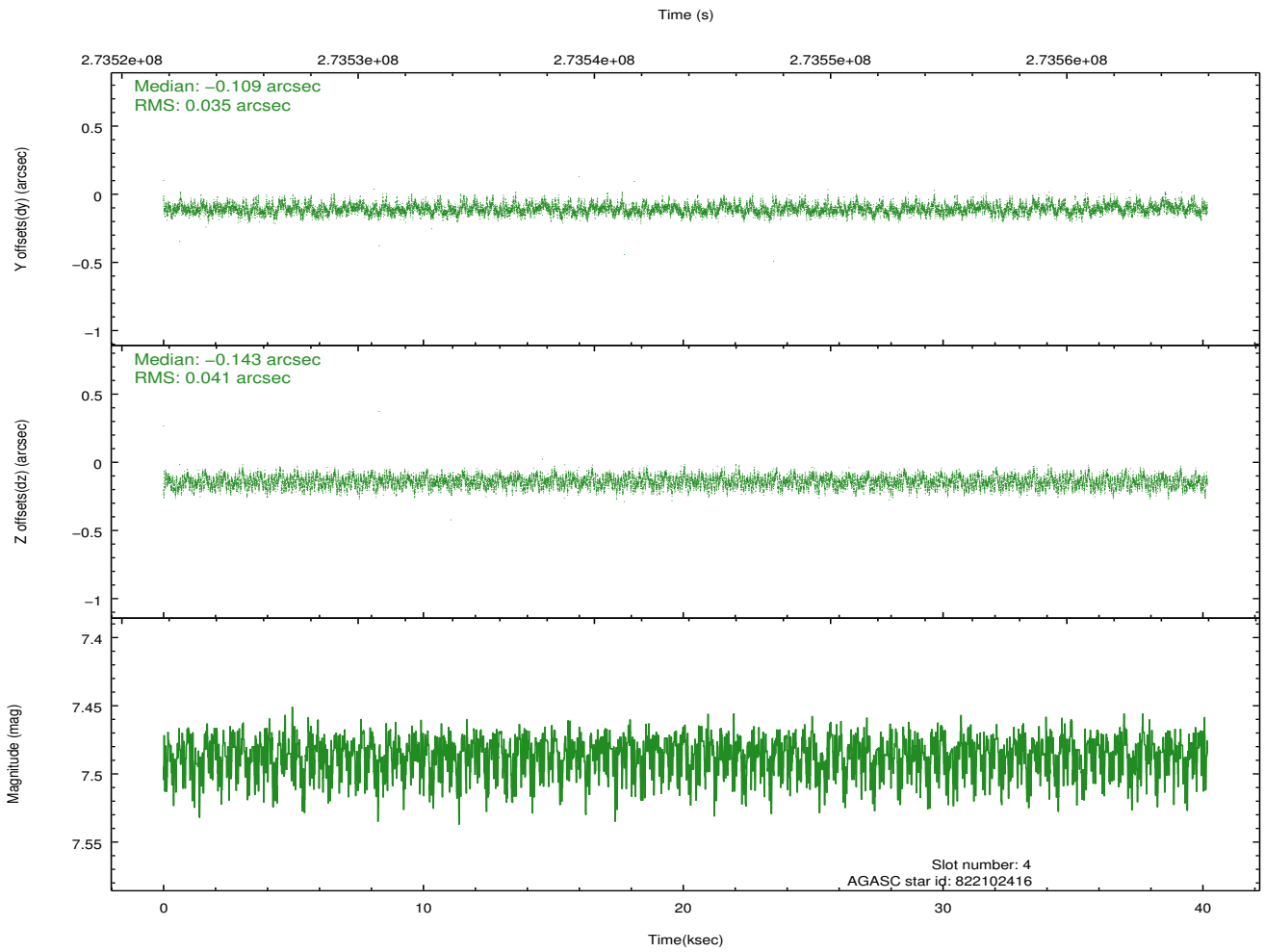
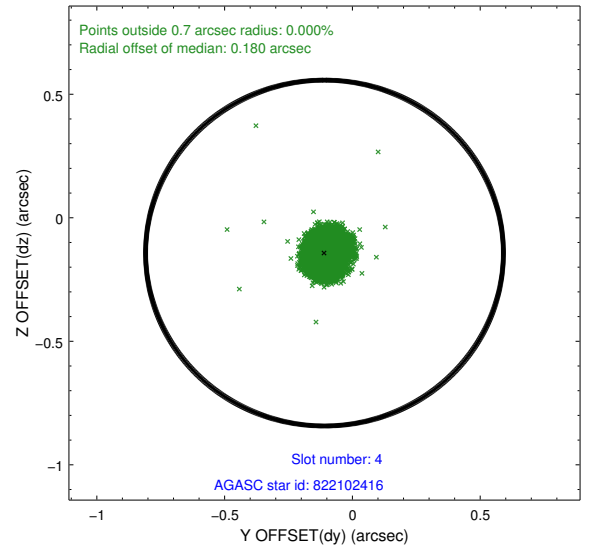
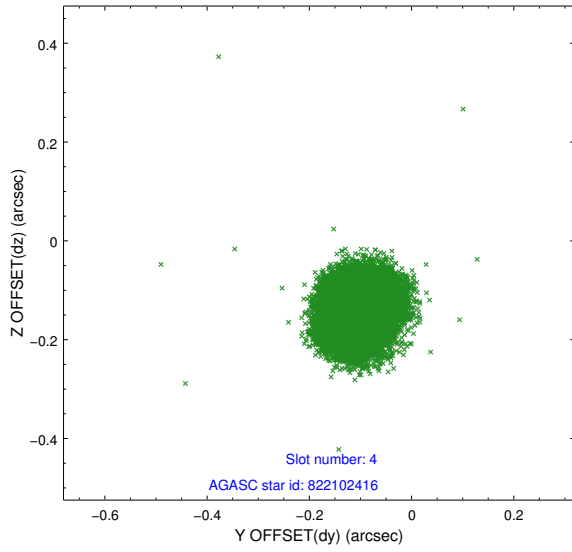
slot	status	id	mag	n_pts	med_dy	med_dz	dr1	dr2	ra	dec	mean_y	mean_z
0	FID	ACIS-S-1	7.19	9798	0.034	-0.091	0.009	0.019	0.000000	0.000000	934.06	-1728.58
1	FID	ACIS-S-4	7.21	9800	0.130	0.051	0.009	0.016	0.000000	0.000000	2151.59	175.69
2	FID	ACIS-S-5	7.23	9800	-0.191	0.052	0.008	0.023	0.000000	0.000000	-1814.99	169.34
3	GUIDE	820399496	8.32	19591	-0.081	-0.110	0.079	0.125	271.495152	-19.953854	-1544.89	-2217.85
4	GUIDE	822102416	7.49	19598	-0.109	-0.143	0.058	0.091	272.173216	-20.087156	-1086.20	79.90
5	GUIDE	822614704	7.89	19597	0.129	0.151	0.053	0.086	272.076243	-20.843493	1639.24	-226.44
6	GUIDE	822616024	8.42	19597	0.208	-0.044	0.072	0.114	272.218514	-20.919122	1908.38	254.15
7	GUIDE	822100176	8.52	19594	-0.150	0.145	0.064	0.102	272.112888	-19.868886	-1870.31	-129.57

2.4 Star Slots

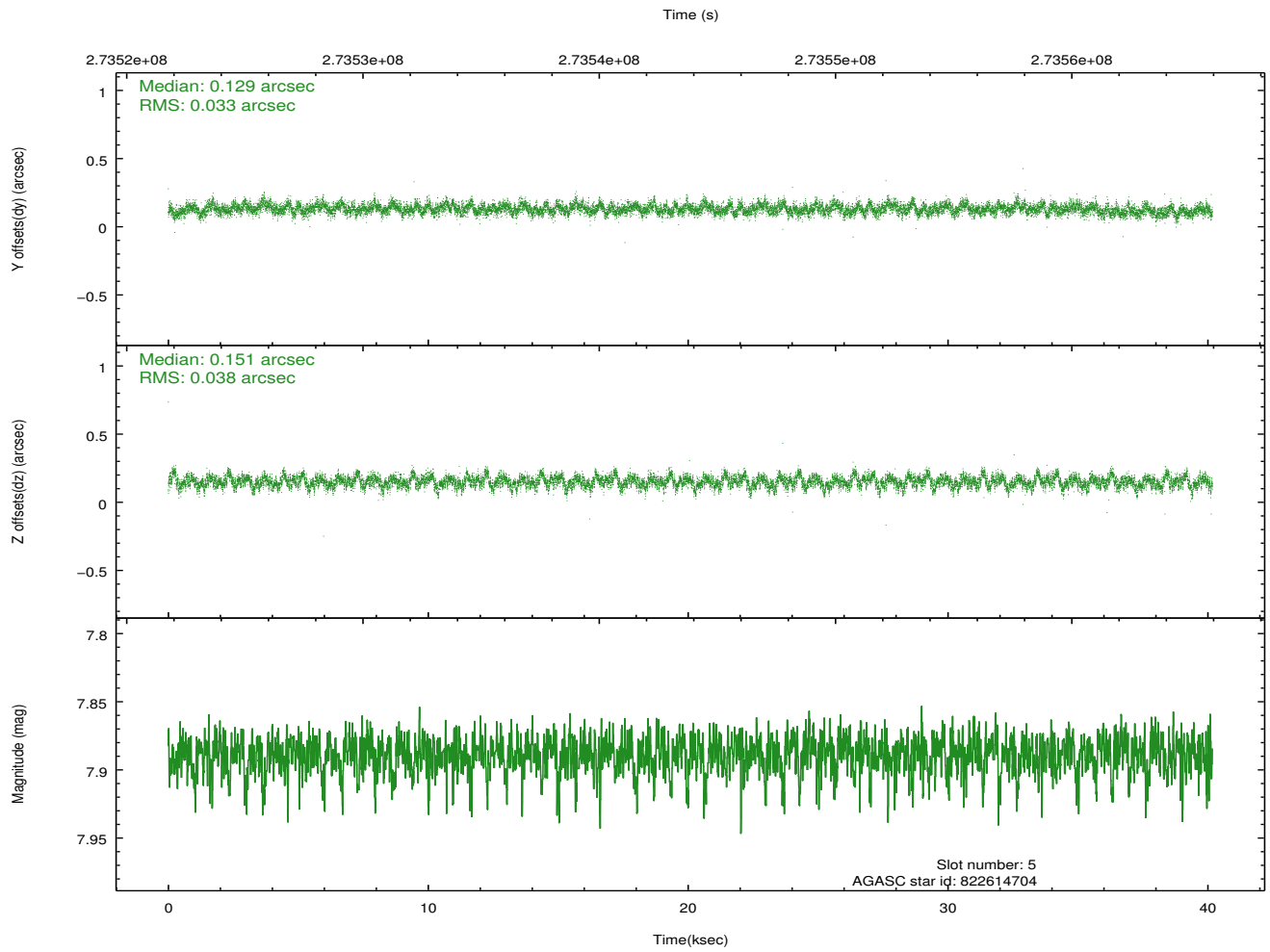
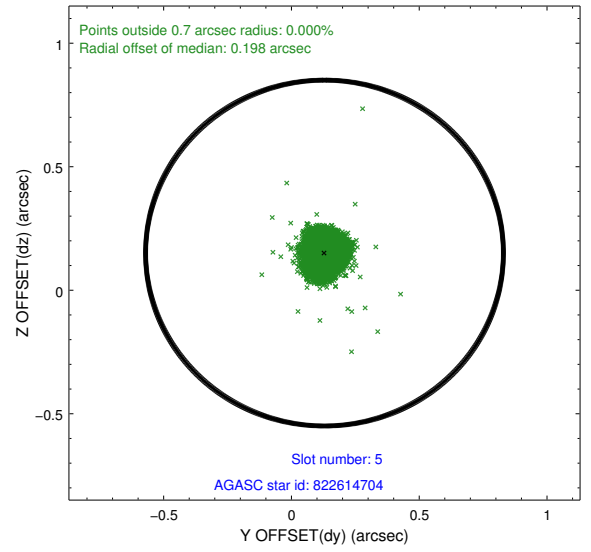
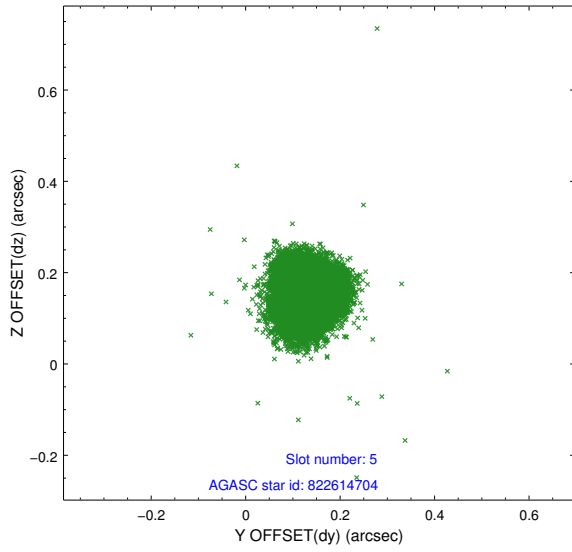
2.4.1 Slot 3



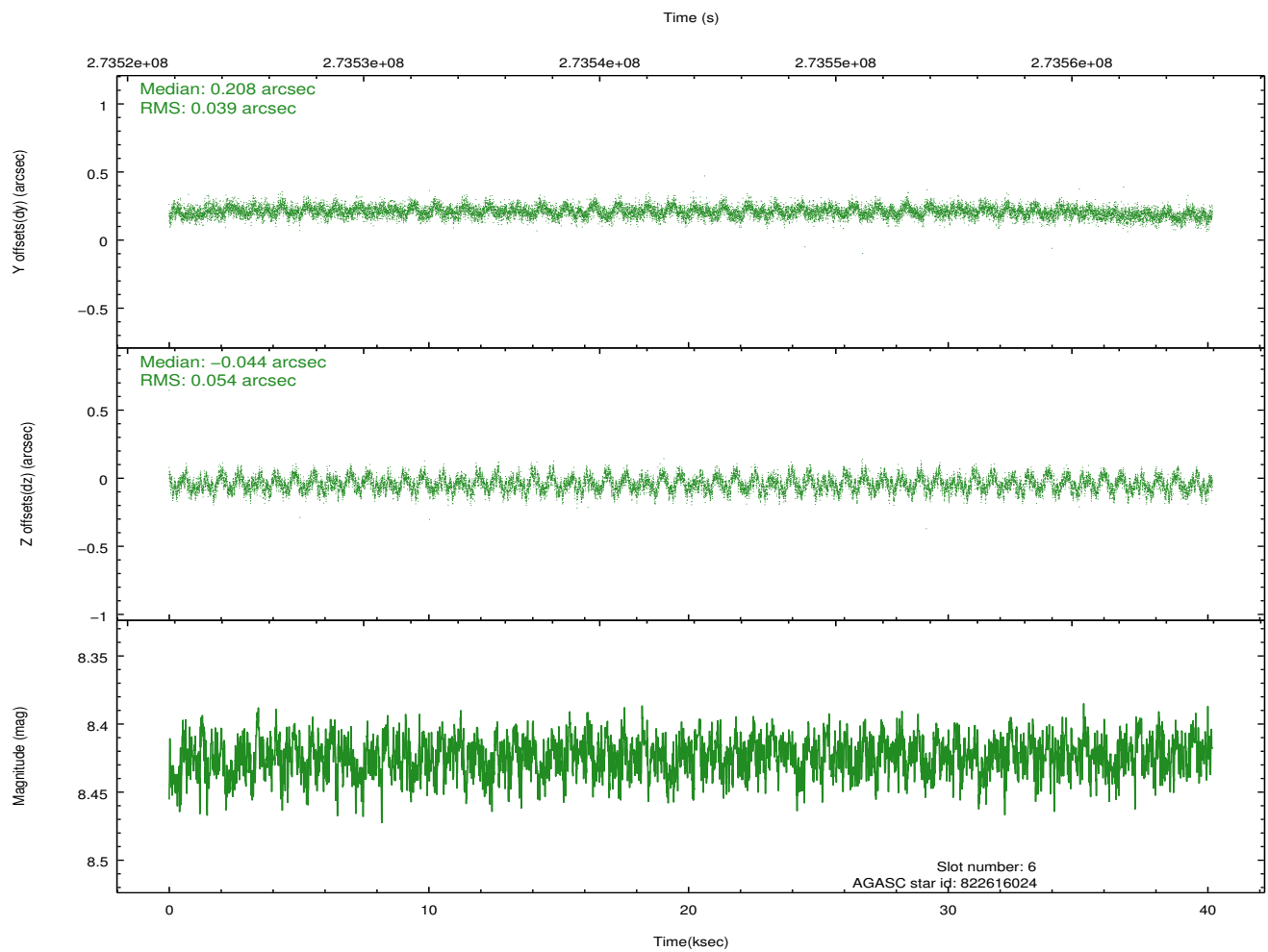
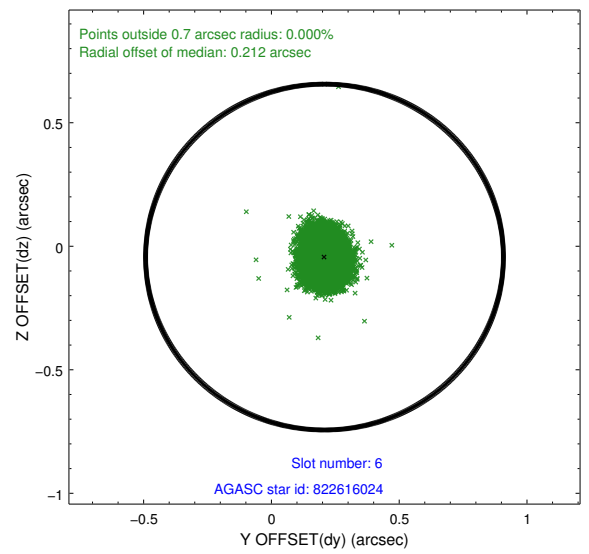
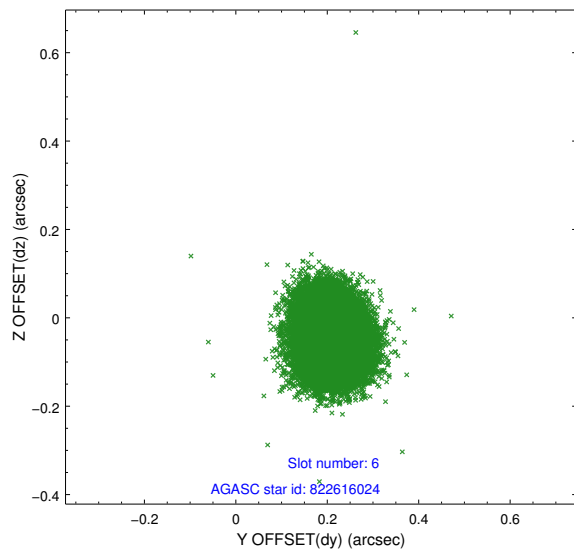
2.4.2 Slot 4



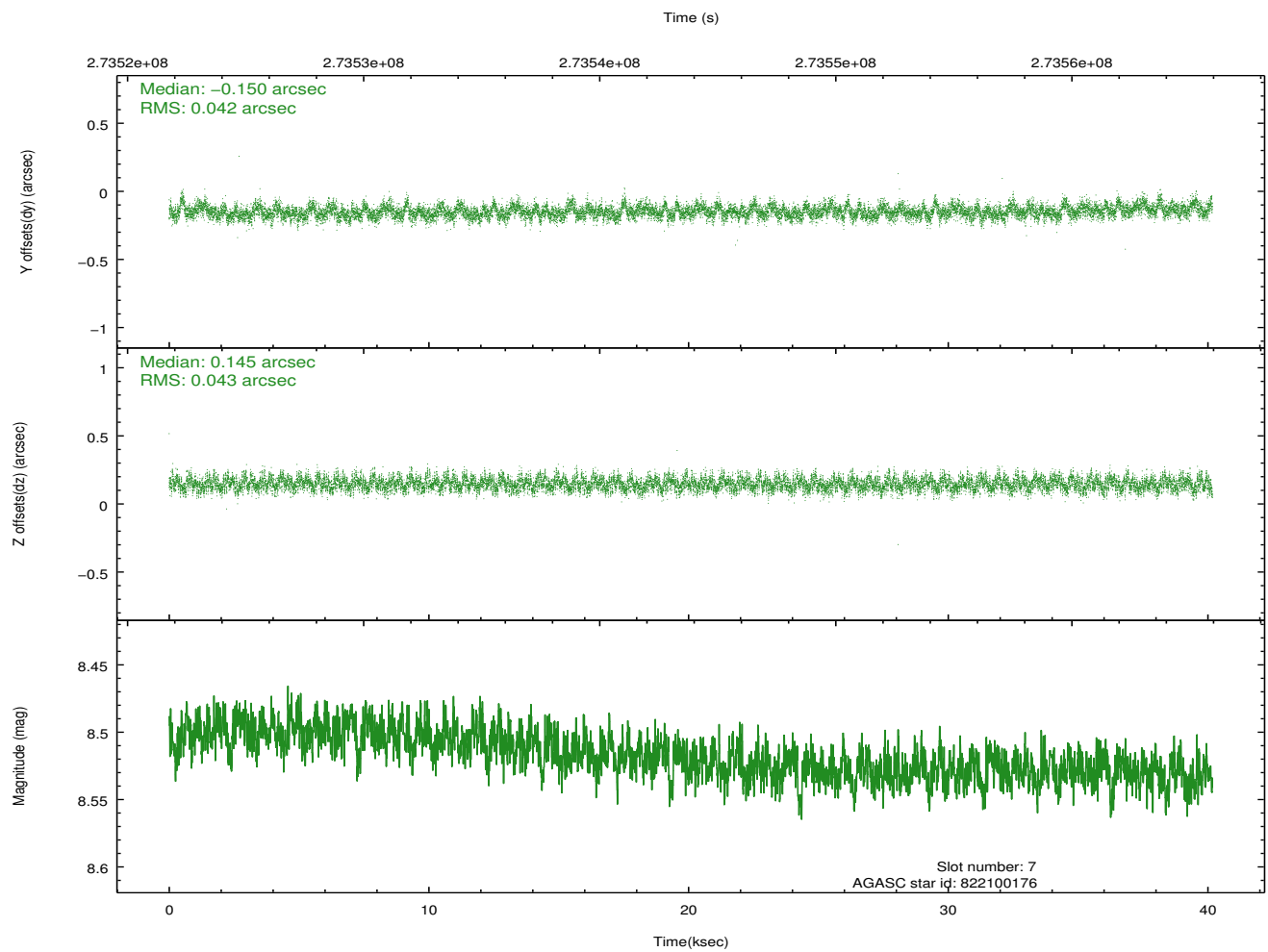
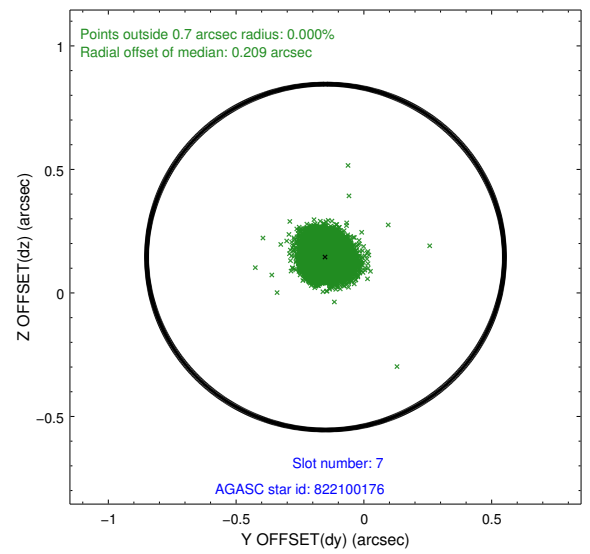
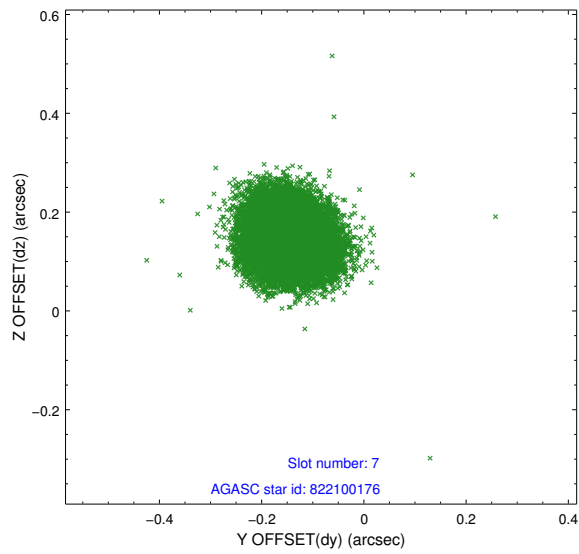
2.4.3 Slot 5



2.4.4 Slot 6

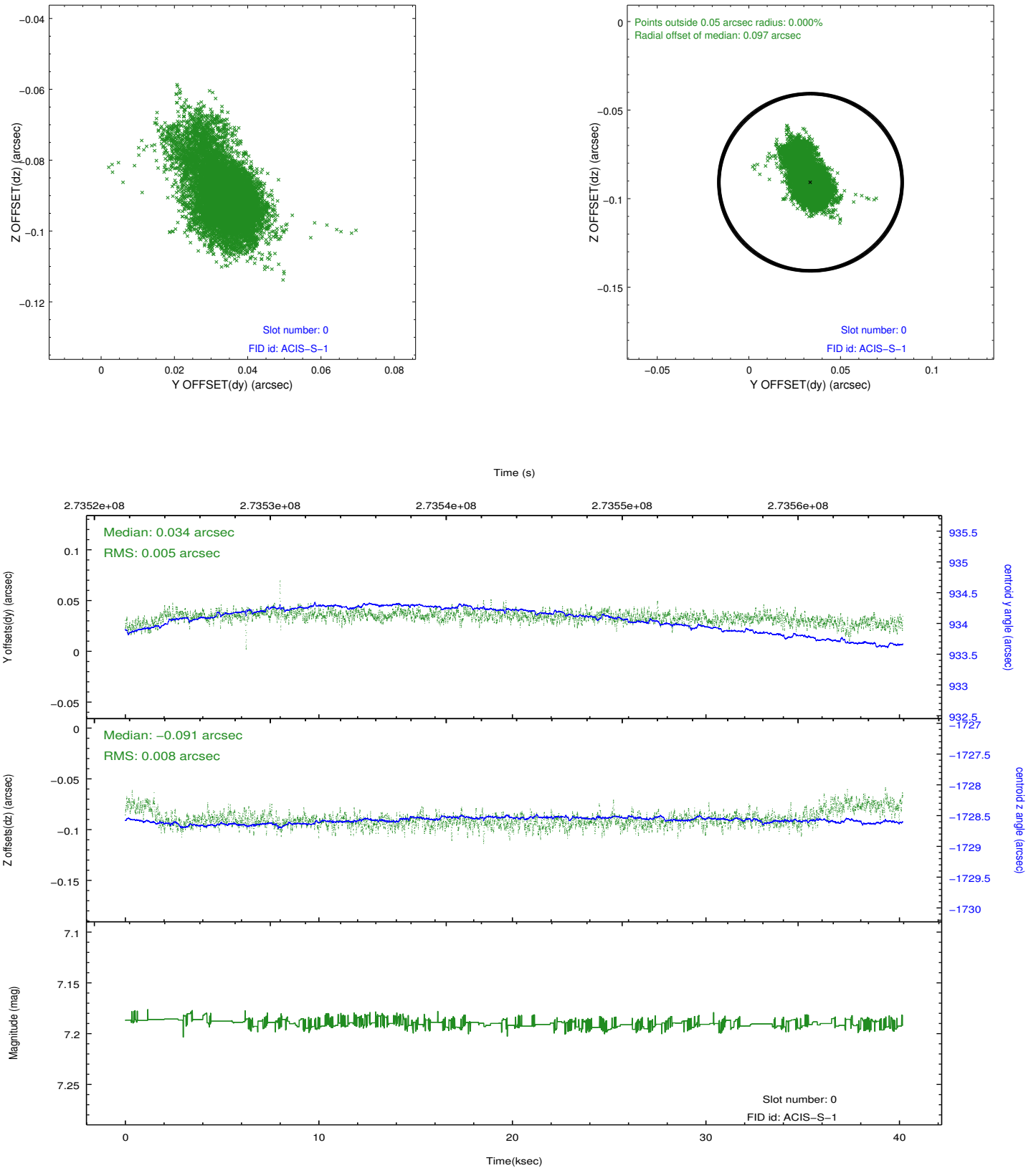


2.4.5 Slot 7

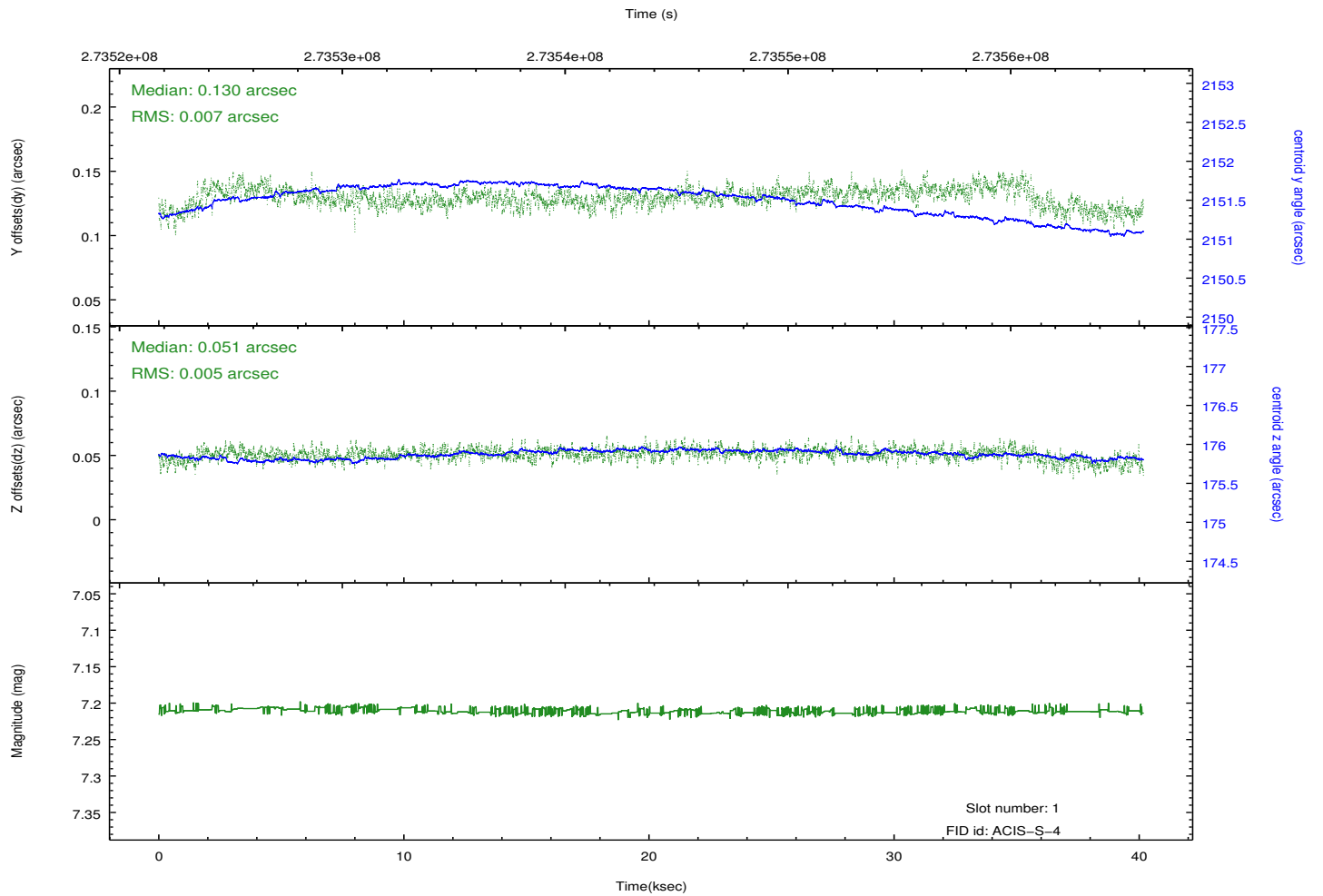
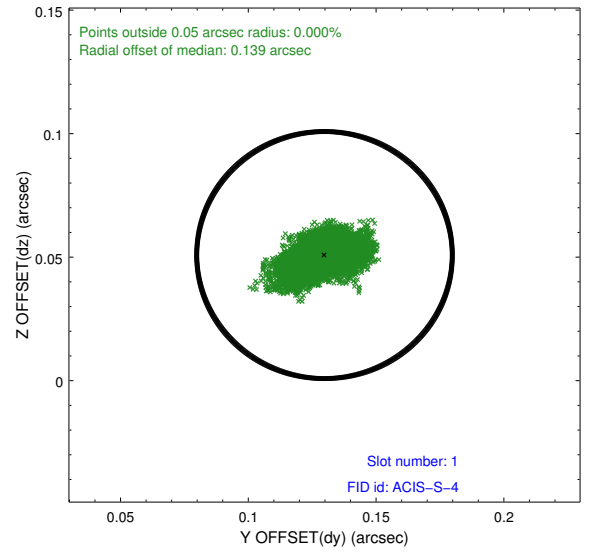
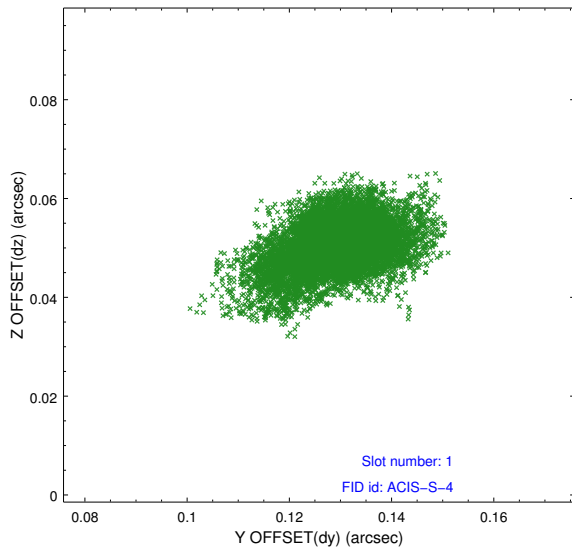


2.5 FID Slots

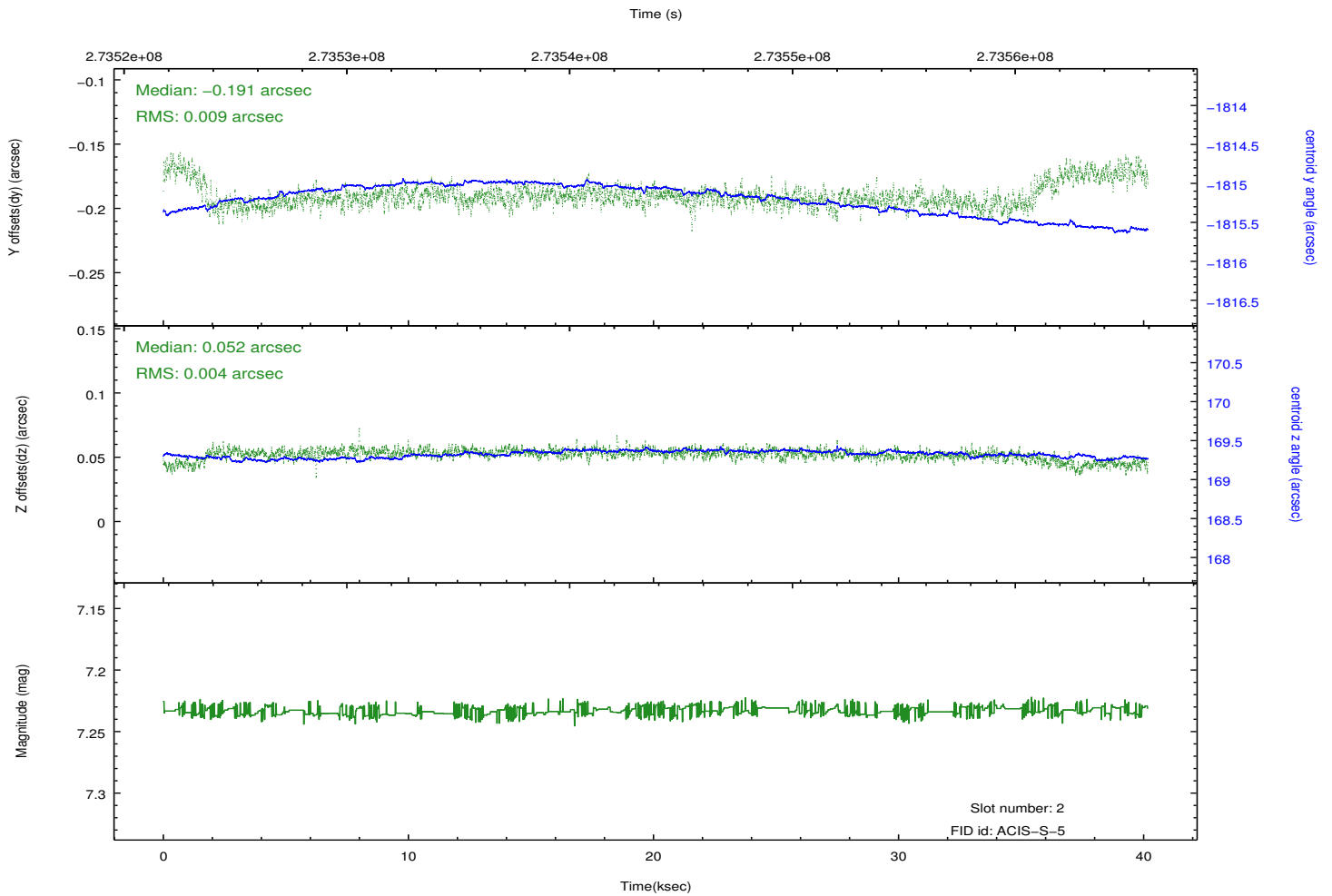
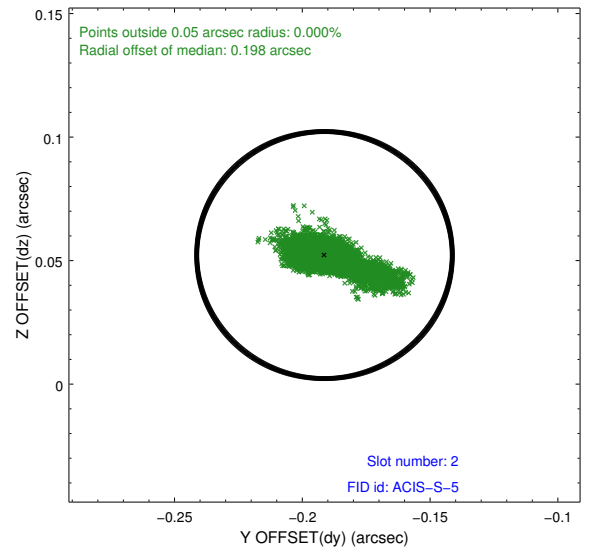
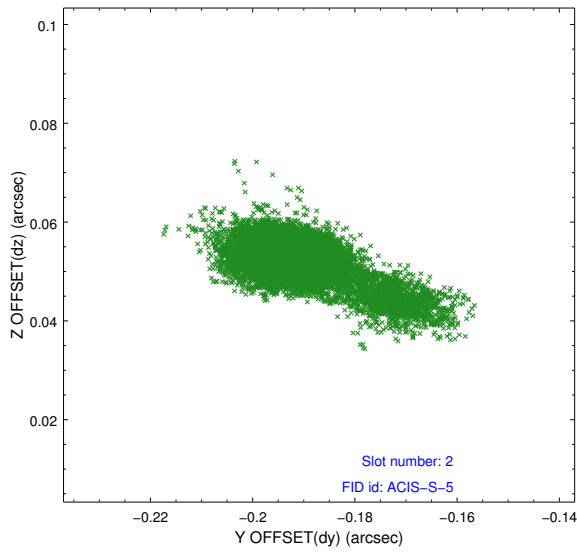
2.5.1 Slot 0



2.5.2 Slot 1



2.5.3 Slot 2



A Summary

A.1 Status

V&V Scientist	Joy Nichols
V&V Date (YYYY-MM-DD)	2012.04.09
V&V Edition	1
V&V Disposition and Status	OK
V&V Charge Time	40.175

A.2 Comments