

V&V Reference Report

L2 ASCDS Version : 8.4.3

Observation 6870 - L2 Version 2
Chandra X-Ray Center

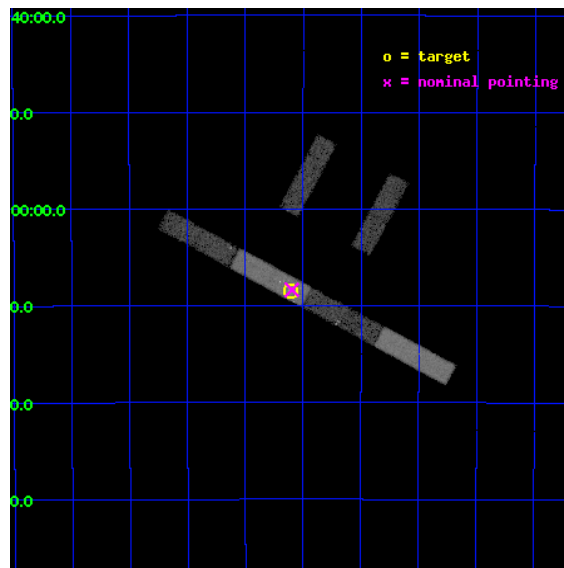
L2 Processing Date : Mar 30 2012

Contents

1	Front	2
2	OBI	3
2.1	OBI	3
2.1.1	Images	3
2.1.2	Bias	3
2.1.3	Parameters	4
2.1.4	Events	4
2.2	Compared Parameters	5
2.3	Aspect	6
2.4	Star Slots	9
2.4.1	Slot 3	9
2.4.2	Slot 4	10
2.4.3	Slot 5	11
2.4.4	Slot 6	12
2.4.5	Slot 7	13
2.5	FID Slots	14
2.5.1	Slot 0	14
2.5.2	Slot 1	15
2.5.3	Slot 2	16
A	Summary	17
A.1	Status	17
A.2	Comments	17

1 Front

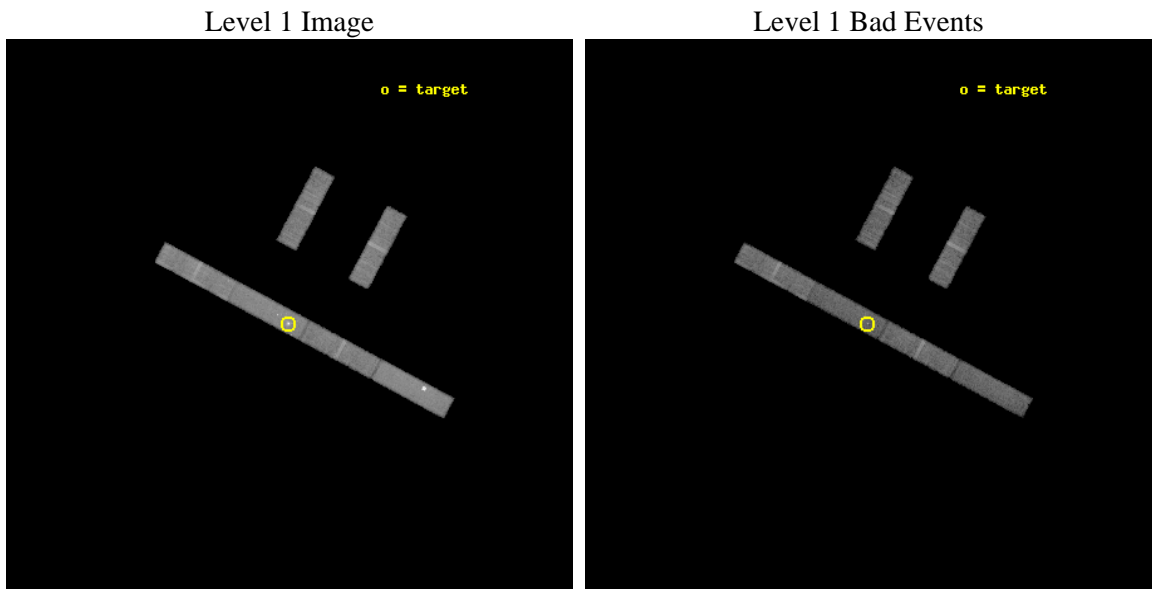
seq_num	701288	Sequence number
obs_id	6870	Observation id
title	Short-time monitoring of the extreme variations in NGC~1365	Propos
observer	Dr Guido Risaliti	Principal investigator
object	NGC 1365	Source name
dtcycle	0	
cycle	P	events from which exps? Prim/Second/Both
ra_targ	53.401667	Observer's specified target RA [deg]
dec_targ	-36.140278	Observer's specified target Dec [deg]
ra_nom	53.399346482223	Nominal RA [deg]
dec_nom	-36.139383185195	Nominal Dec [deg]
roll_nom	208.13819231276	Nominal Roll [deg]
revision	2	Processing version of data
ontime	15094.199918181	Sum of GTIs [s]
livetime	14551.3039946	Livetime [s]
ontime2	15094.199918181	Sum of GTIs [s]
ontime3	15094.199918181	Sum of GTIs [s]
ontime5	15094.199918181	Sum of GTIs [s]
ontime6	15094.199918181	Sum of GTIs [s]
ontime7	15094.199918181	Sum of GTIs [s]
ontime8	15094.199918181	Sum of GTIs [s]
l2events	66365	Number of level 2 events



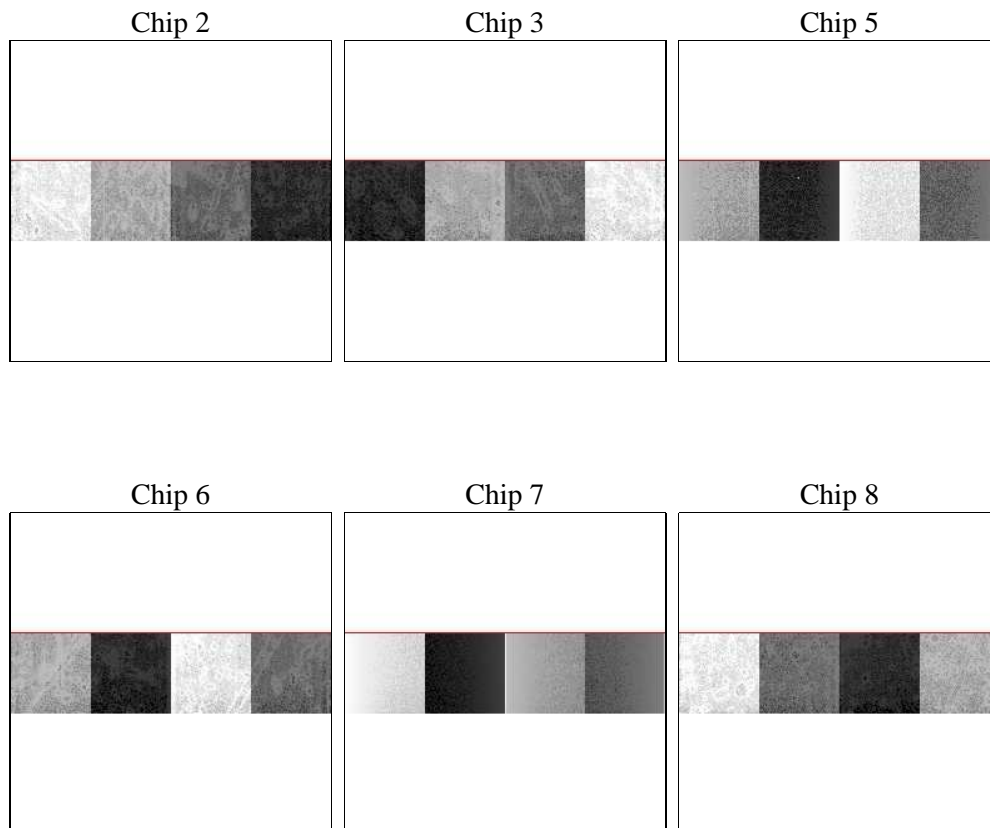
2 OBI

2.1 OBI

2.1.1 Images



2.1.2 Bias



2.1.3 Parameters

obi_num	0	Obi number	sched_exp_time	15000.000000	[s] Scheduled observation exposure time
ascdsver	8.4.3	Processing system revision	ontime	15094.199918181	Sum of GTIs [s]
caldbver	4.4.8	 	ontime2	15094.199918181	Sum of GTIs [s]
date	2012-03-30T18:48:41	Date and time of file creation	ontime3	15094.199918181	Sum of GTIs [s]
revision	2	Processing version of data	ontime5	15094.199918181	Sum of GTIs [s]
			ontime6	15094.199918181	Sum of GTIs [s]
			ontime7	15094.199918181	Sum of GTIs [s]
			ontime8	15094.199918181	Sum of GTIs [s]
			l1events	289590	Number of level 1 events

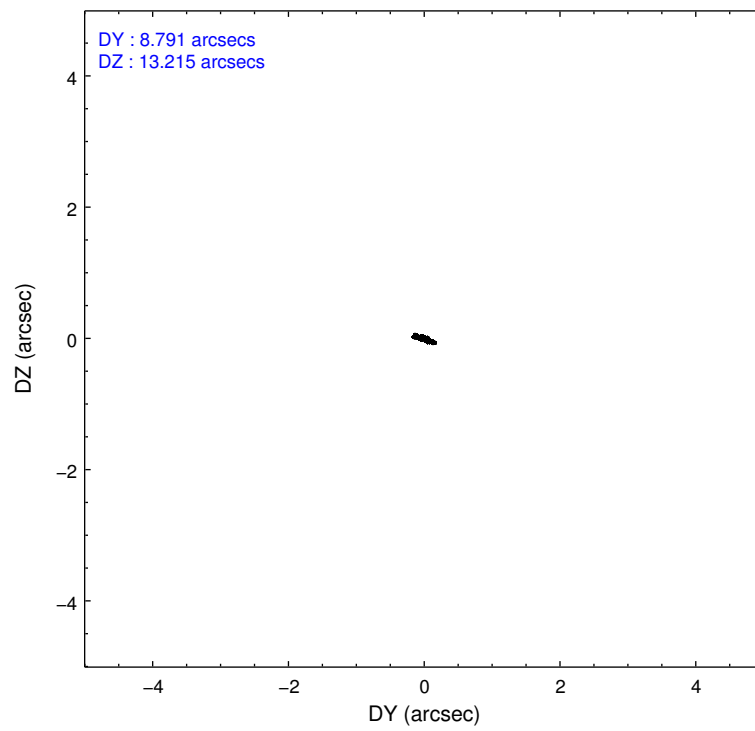
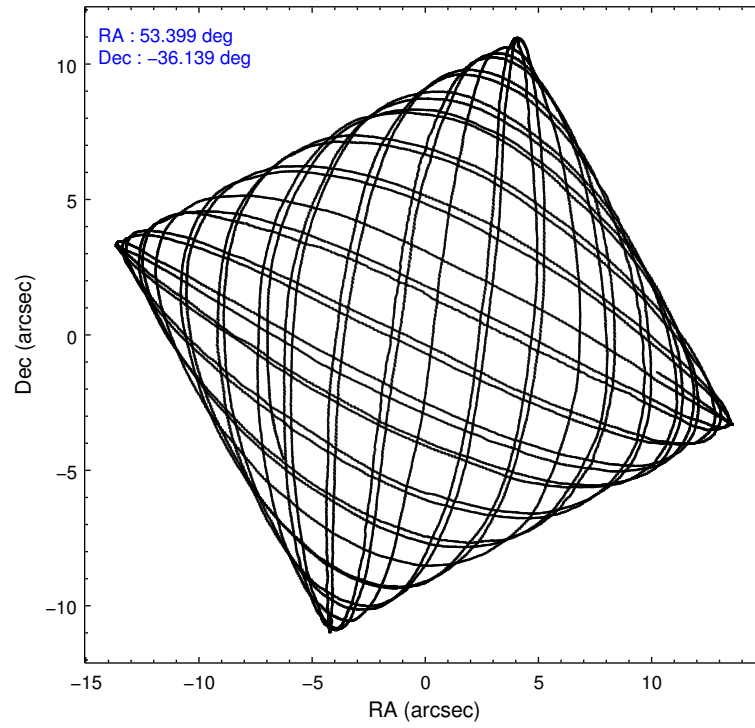
2.1.4 Events

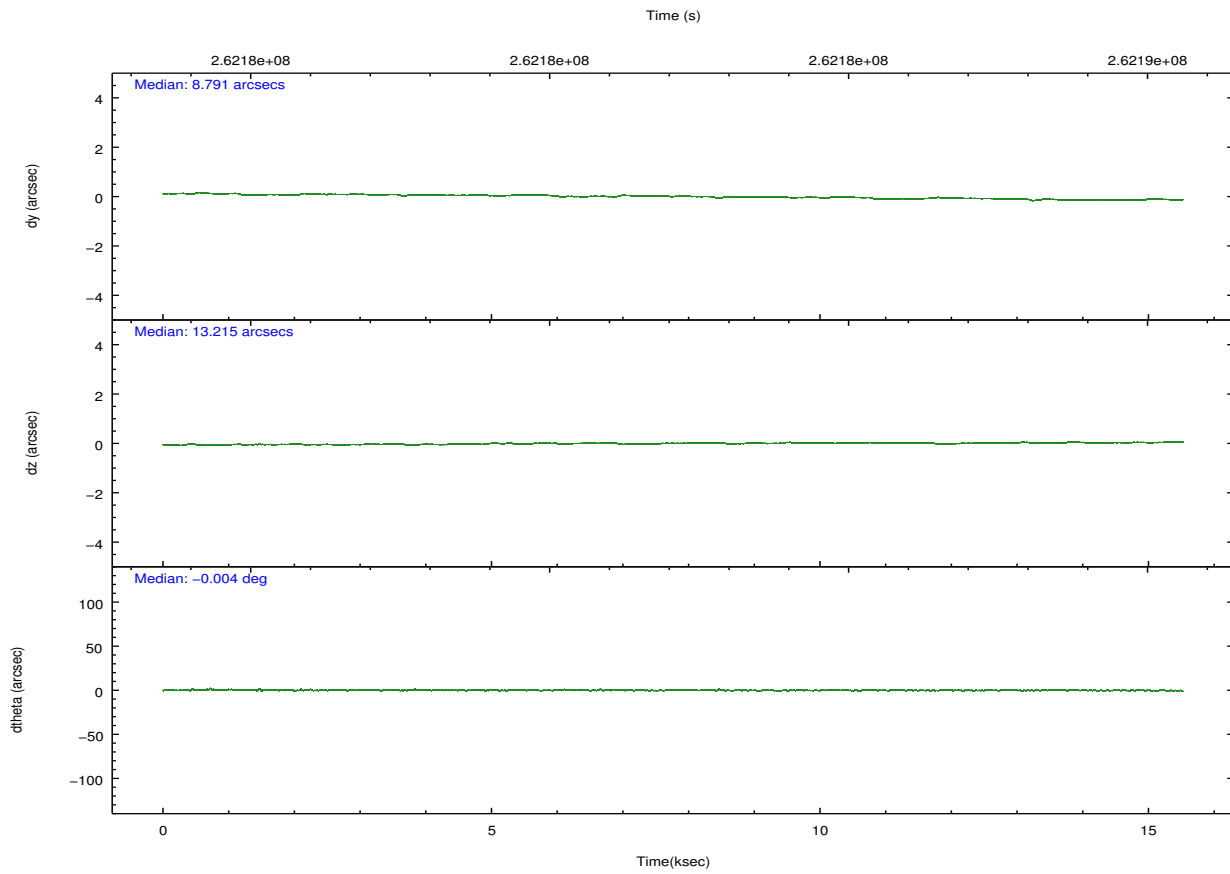
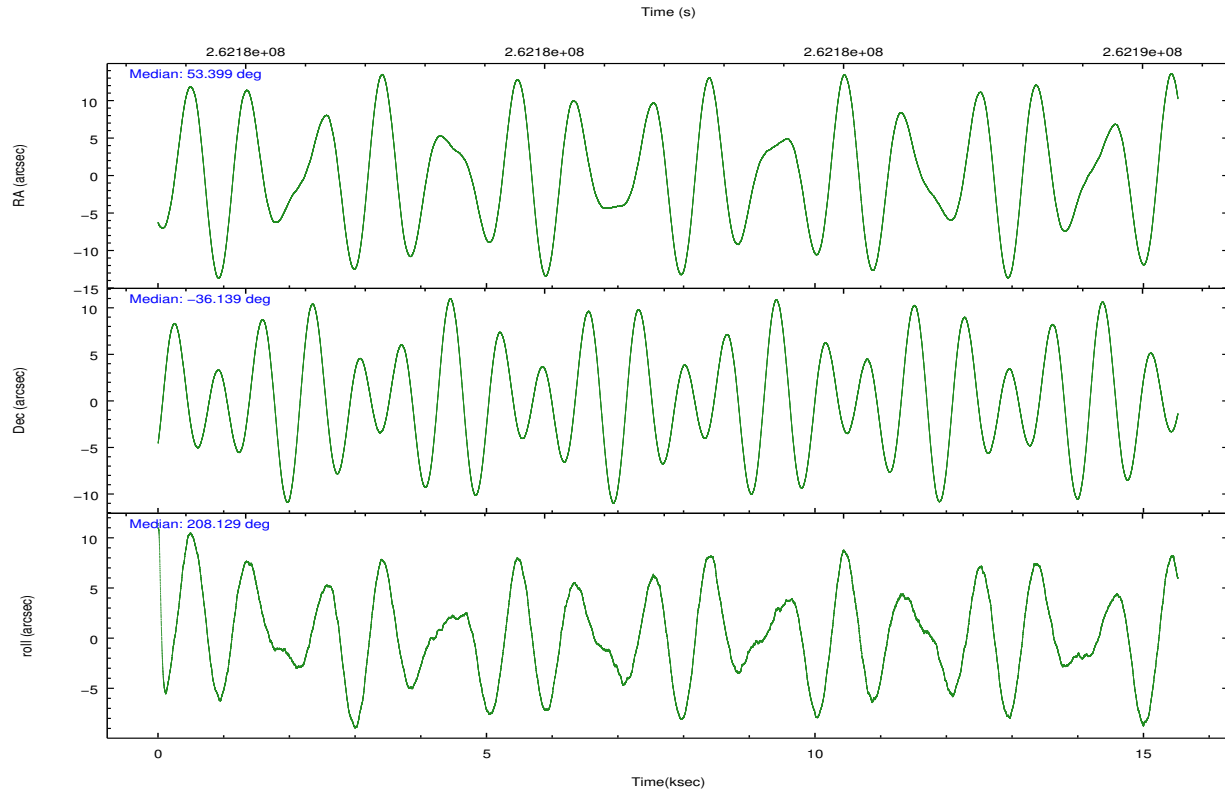
	ccd 2	ccd 3	ccd 5	ccd 6	ccd 7	ccd 8		ccd 2	ccd 3	ccd 5	ccd 6	ccd 7	ccd 8
level 1 events	41746	36803	64098	39646	55462	51835	grade 0 events	1926	1876	13702	1796	4085	3073
rejected events	36966	32330	27606	34873	27560	41314		4%	5%	21%	4%	7%	5%
rejected %	88%	87%	43%	87%	49%	79%	grade 1 events	16	23	86	15	85	24
								0%	0%	0%	0%	0%	0%
							grade 2 events	942	776	7721	854	6051	2153
								2%	2%	12%	2%	10%	4%
							grade 3 events	594	549	1384	637	2970	1151
								1%	1%	2%	1%	5%	2%
							grade 4 events	626	602	1306	631	3032	1111
								1%	1%	2%	1%	5%	2%
							grade 5 events	1356	1507	4294	1558	4815	2044
								3%	4%	6%	3%	8%	3%
							grade 6 events	695	671	12384	855	11770	3033
								1%	1%	19%	2%	21%	5%
							grade 7 events	35591	30799	23221	33300	22654	39246
								85%	83%	36%	83%	40%	75%

2.2 Compared Parameters

Parameter	Planned	Actual	Parameter	Planned	Actual
Instrument	ACIS	ACIS	Obspar format version number	7	7
Detector	ACIS-235678	ACIS-235678	Obspar file type	PREDICTED	ACTUAL
Grating	NONE	NONE	Obspar update status	NONE	UPDATED
Data mode	FAINT	FAINT	Number of optional ACIS chips dropped	0	0
Observation mode	POINTING	POINTING	On-chip summing requested	N	N
[deg] Pointing RA	53.416743	53.39934648222329	Subarray requested	CUSTOM	1/4
[deg] Pointing Dec	-36.116066	-36.13938318519494	Subarray start row	385	385
[deg] Pointing Roll	207.991828	208.1381923127556	Subarray row count	256	256
[mm] SIM focus pos	-0.684267	-0.6828225247311905	Alternating exposures requested	N	N
[mm] SIM defocus	0	0.001444936568705701	[s] Primary exposure time	0.000000	1.1
[mm] SIM translation stage pos	-190.132523	-190.1425803651734			
[mm] SIM translation stage offset	0	0.01005778216563158			
[s] Observation start time (MET)	262174828.184000	262173926.19232			
Observation start date	2006-04-23T10:19:23	2006-04-23T10:05:26			
[s] Observation end time (MET)	262189828.184000	262190514.79309			
Observation end date	2006-04-23T14:29:23	2006-04-23T14:41:54			
Read mode	TIMED	TIMED			

2.3 Aspect



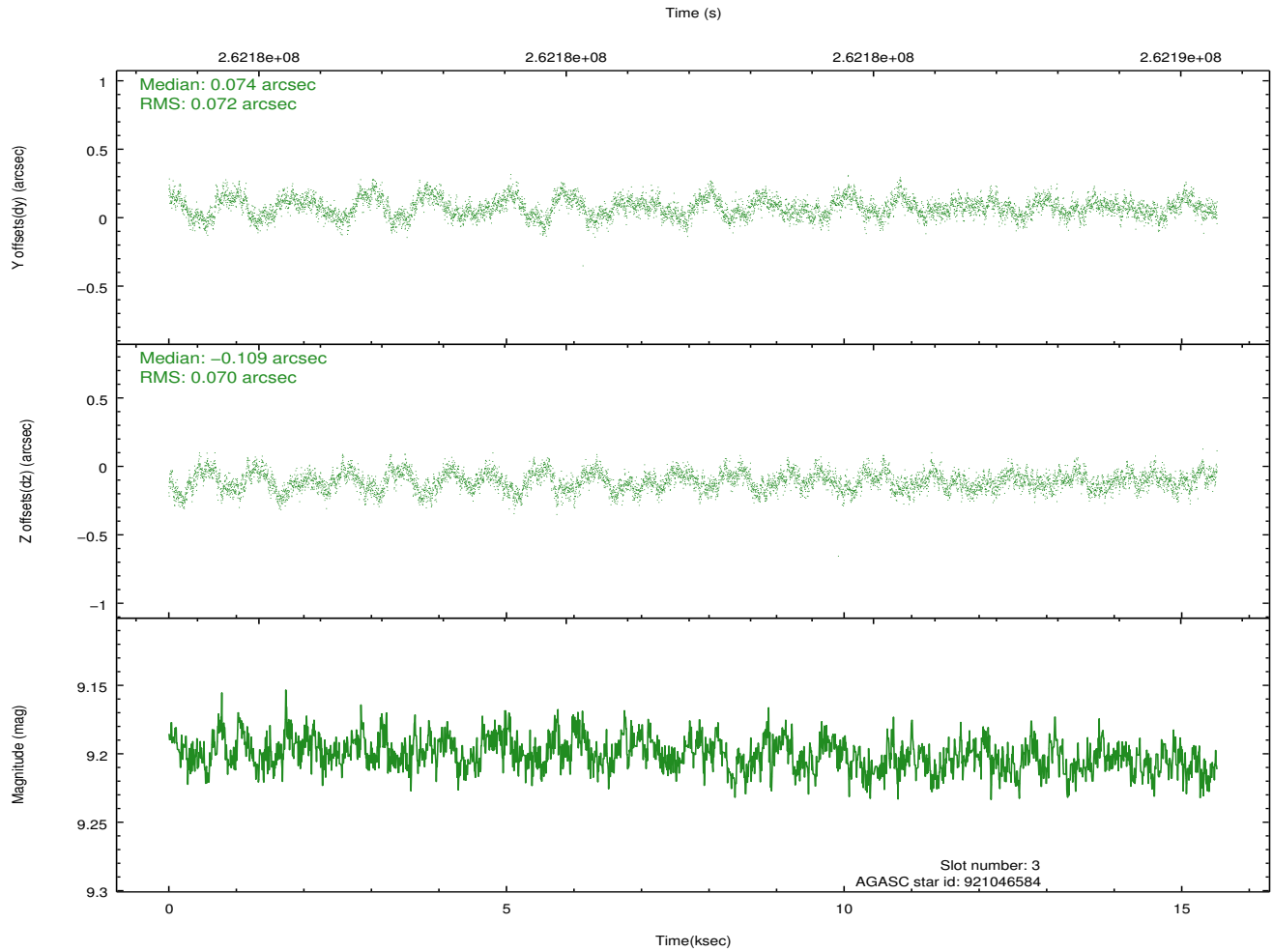
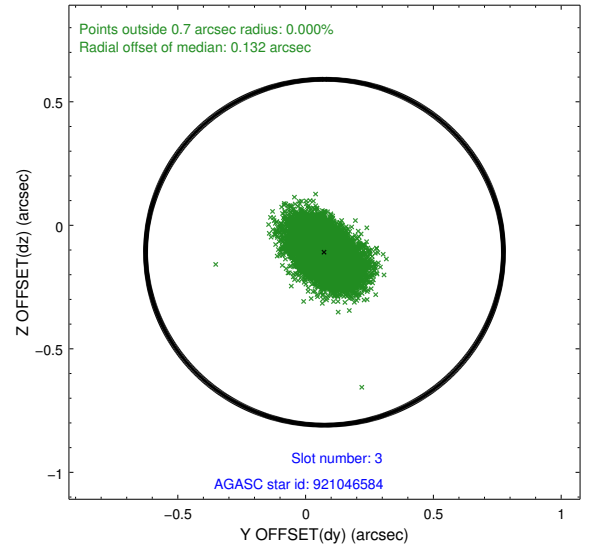
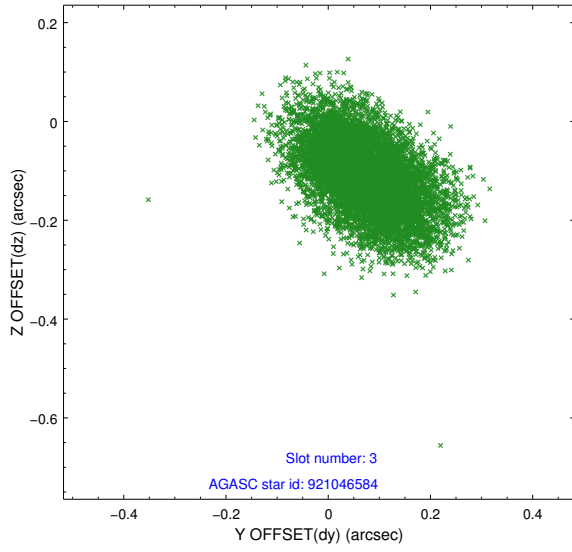


Slot Statistics

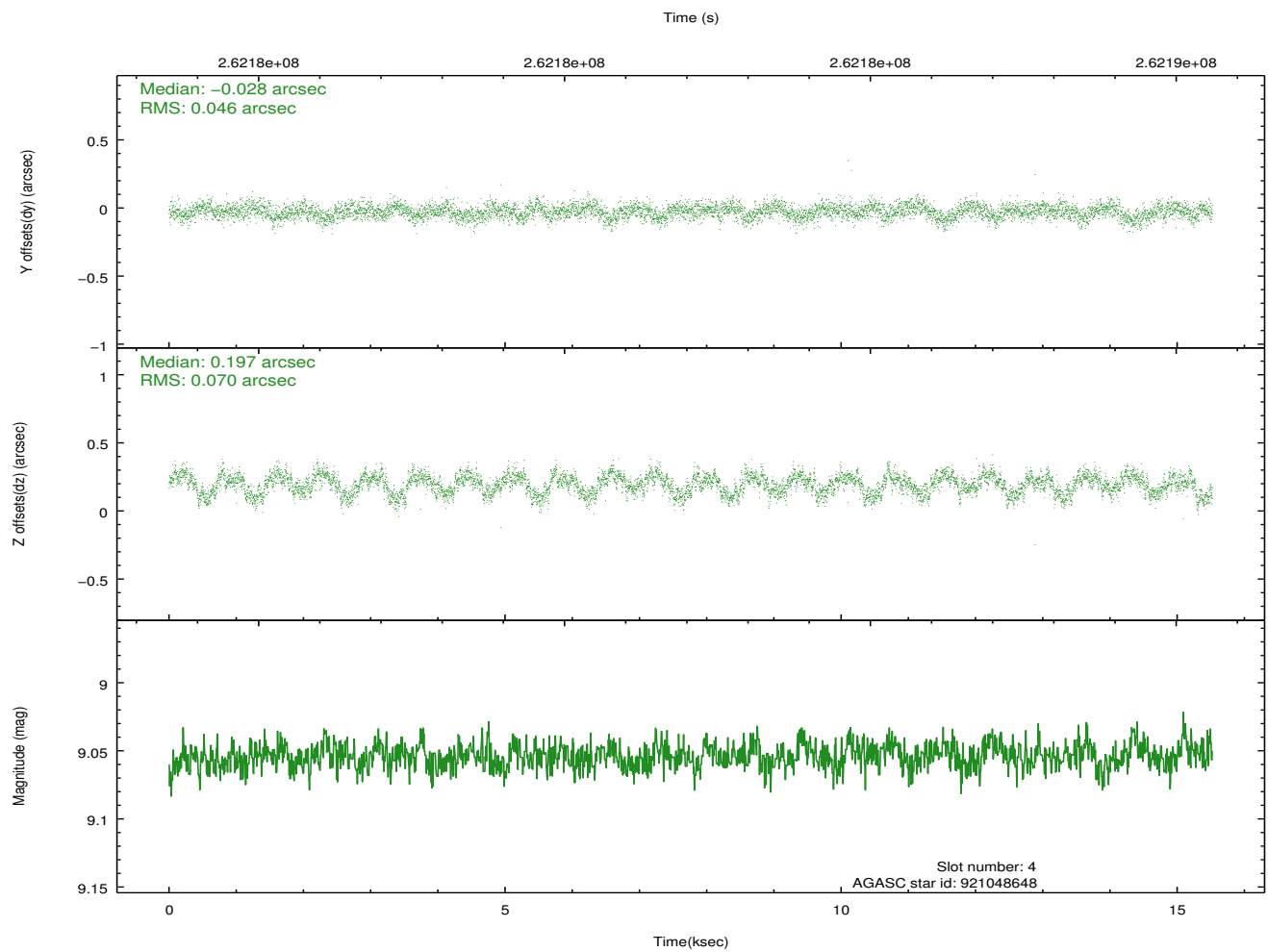
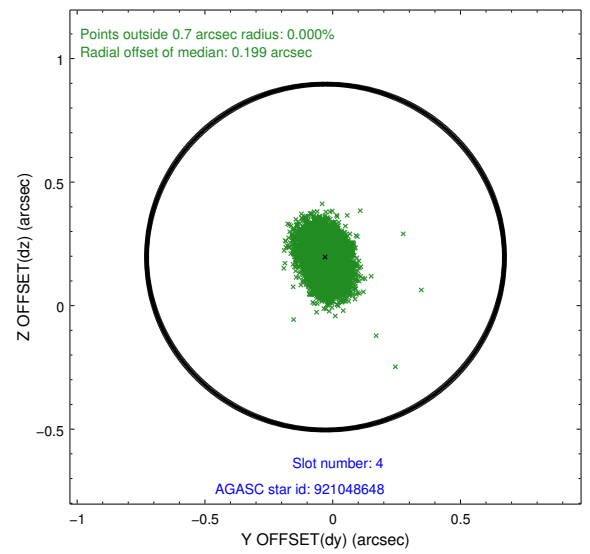
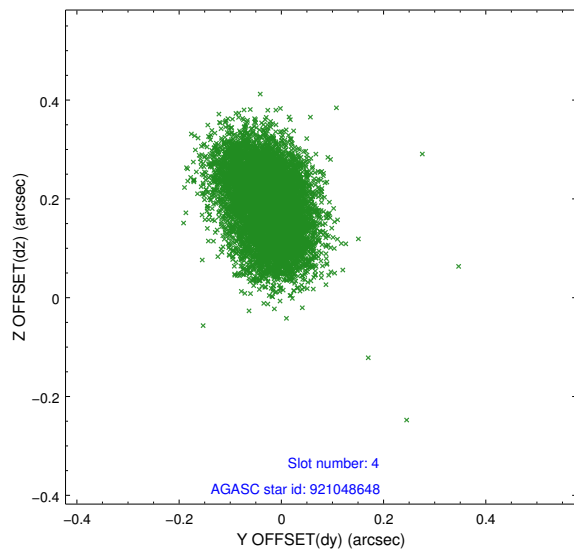
slot	status	id	mag	n_pts	med_dy	med_dz	dr1	dr2	ra	dec	mean_y	mean_z
0	FID	ACIS-S-2	7.10	3786	-0.005	-0.046	0.007	0.013	0.000000	0.000000	-761.61	-1734.53
1	FID	ACIS-S-4	7.20	3786	0.111	0.015	0.007	0.013	0.000000	0.000000	2151.67	173.69
2	FID	ACIS-S-5	7.23	3786	-0.137	0.040	0.007	0.013	0.000000	0.000000	-1814.20	167.75
3	GUIDE	921046584	9.20	7567	0.074	-0.109	0.107	0.174	53.976815	-36.314393	-1097.10	1397.50
4	GUIDE	921048648	9.05	7569	-0.028	0.197	0.090	0.145	53.884610	-35.870023	-1619.43	-138.22
5	GUIDE	921048880	7.63	7572	-0.035	0.037	0.081	0.135	52.491431	-35.748628	1773.02	-2424.76
6	GUIDE	921967072	7.67	7572	-0.068	-0.079	0.084	0.137	54.269247	-36.292226	-1881.29	1730.45
7	GUIDE	921970016	9.39	7569	0.052	-0.039	0.092	0.149	54.228536	-36.081558	-2140.41	1008.41

2.4 Star Slots

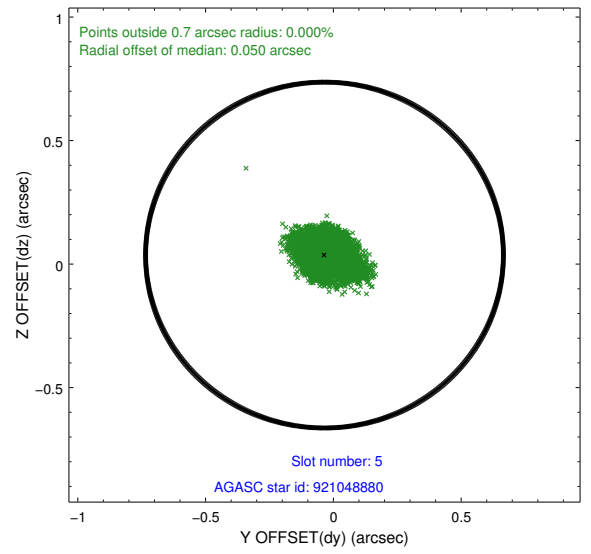
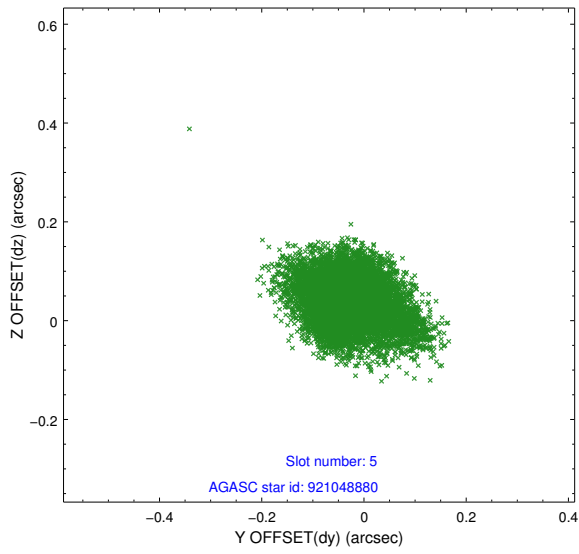
2.4.1 Slot 3



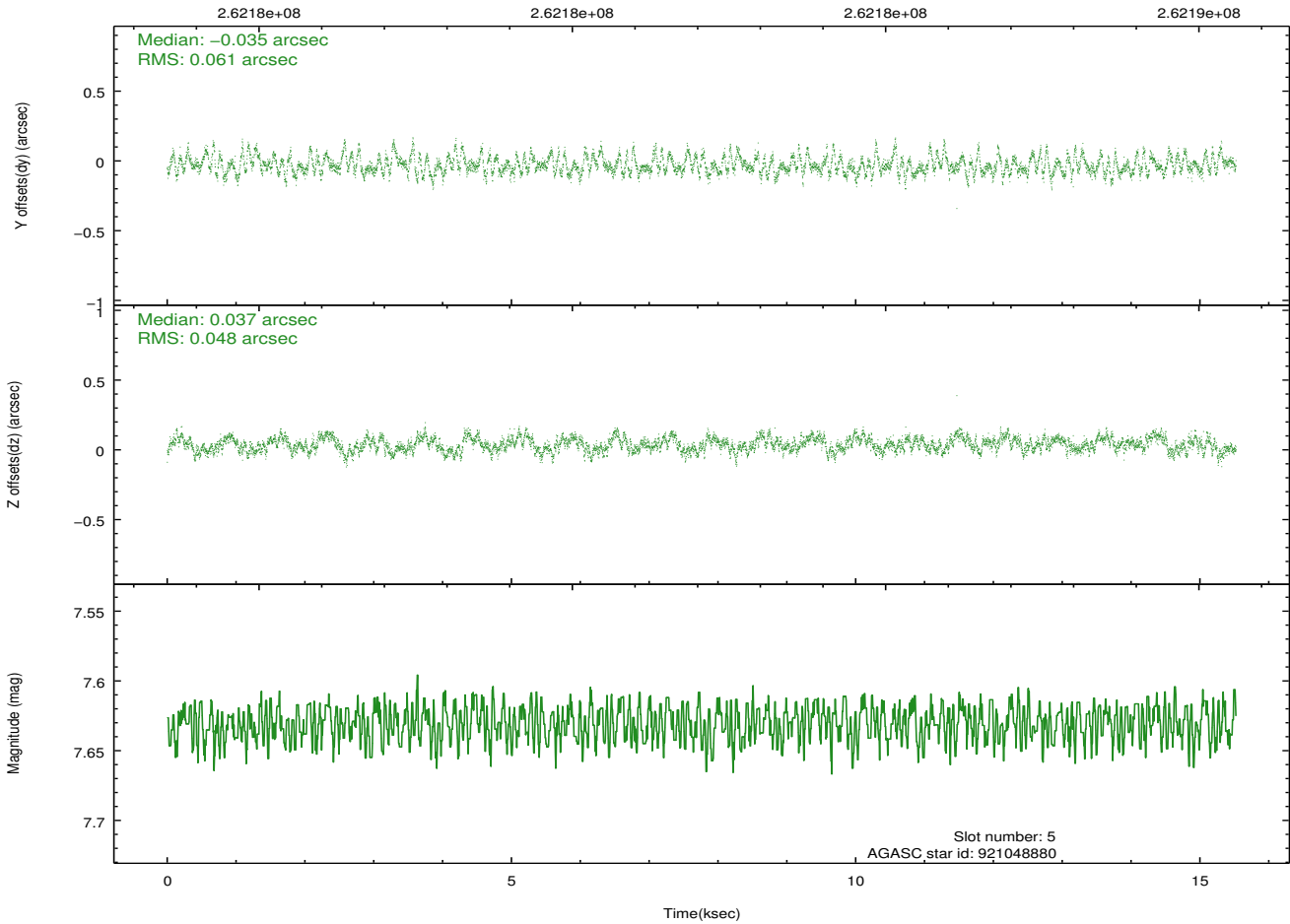
2.4.2 Slot 4



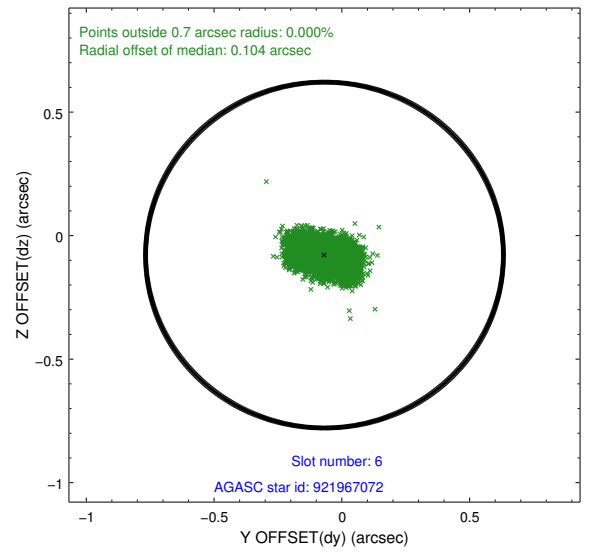
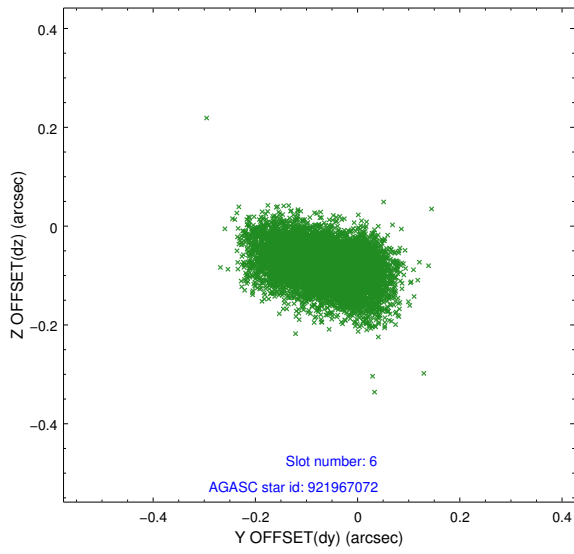
2.4.3 Slot 5



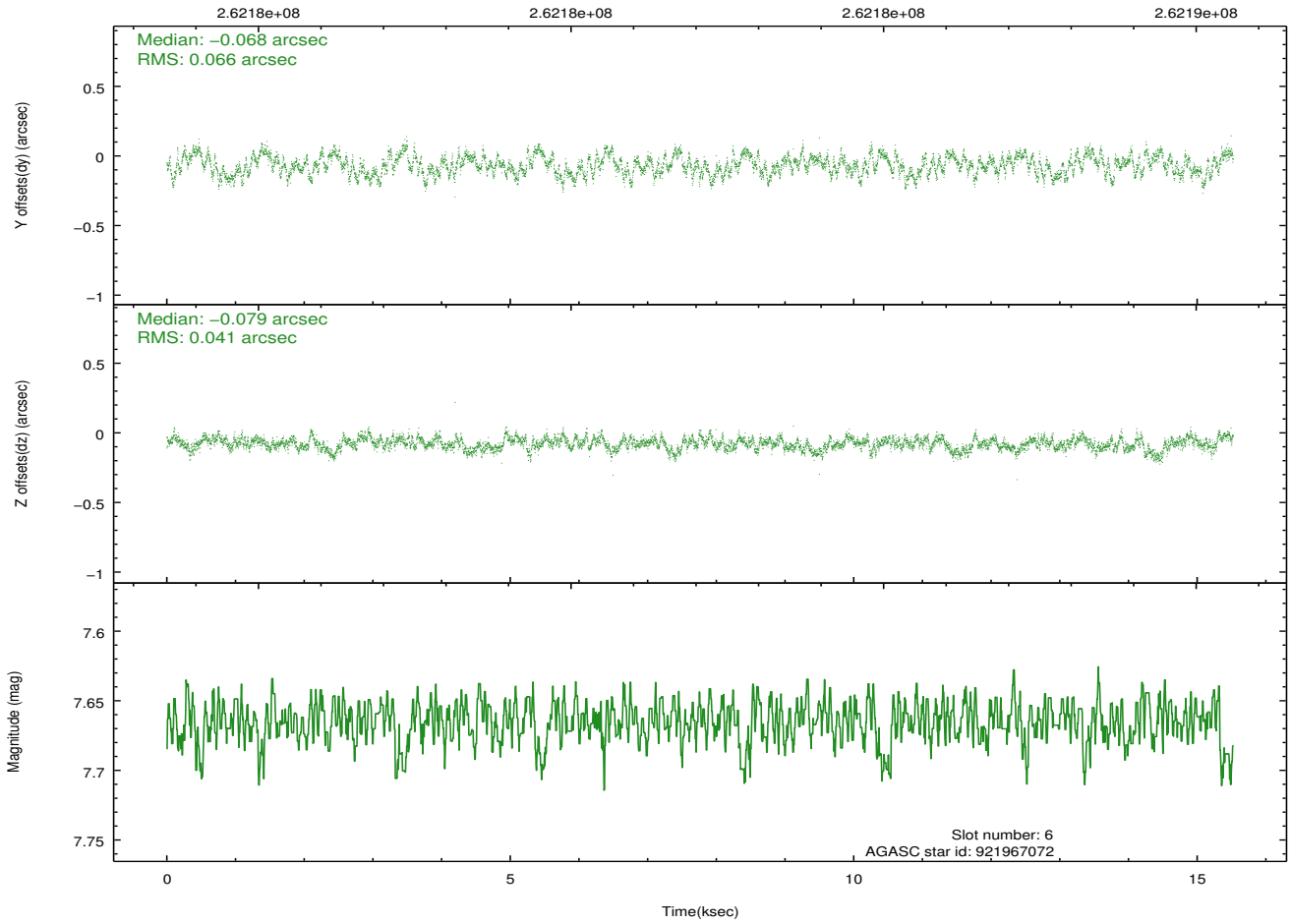
Time (s)



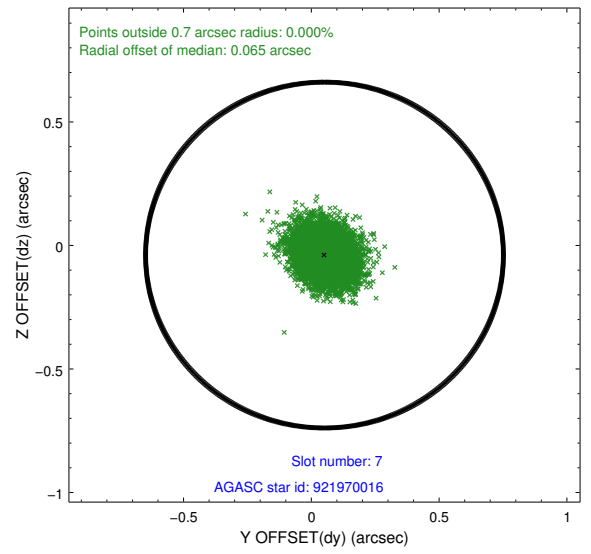
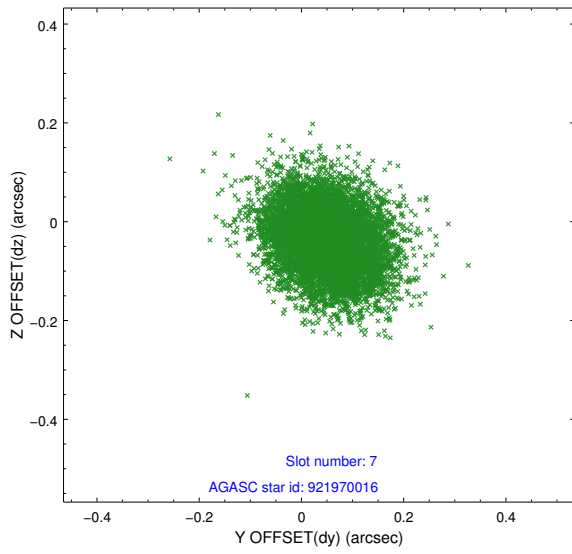
2.4.4 Slot 6



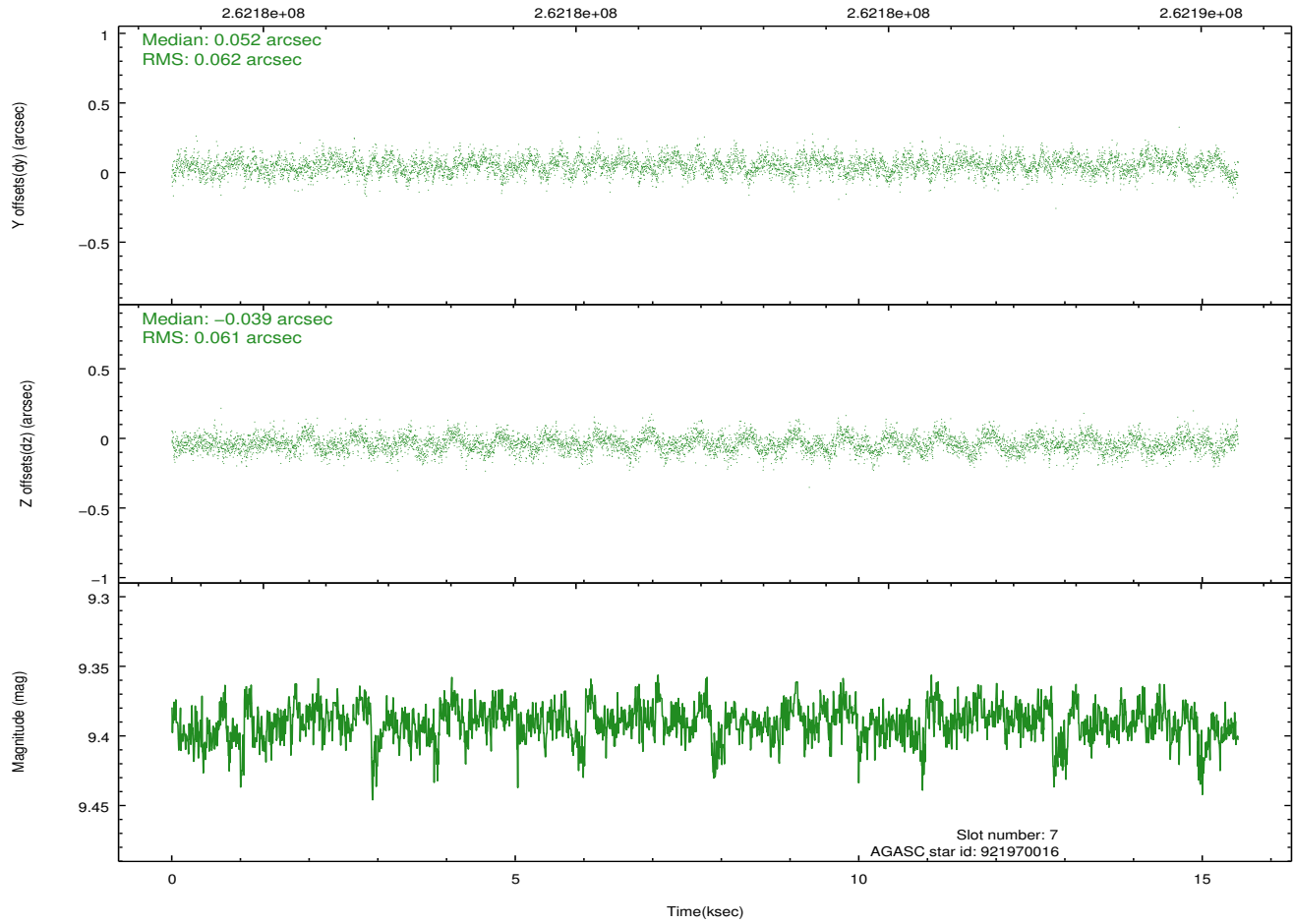
Time (s)



2.4.5 Slot 7

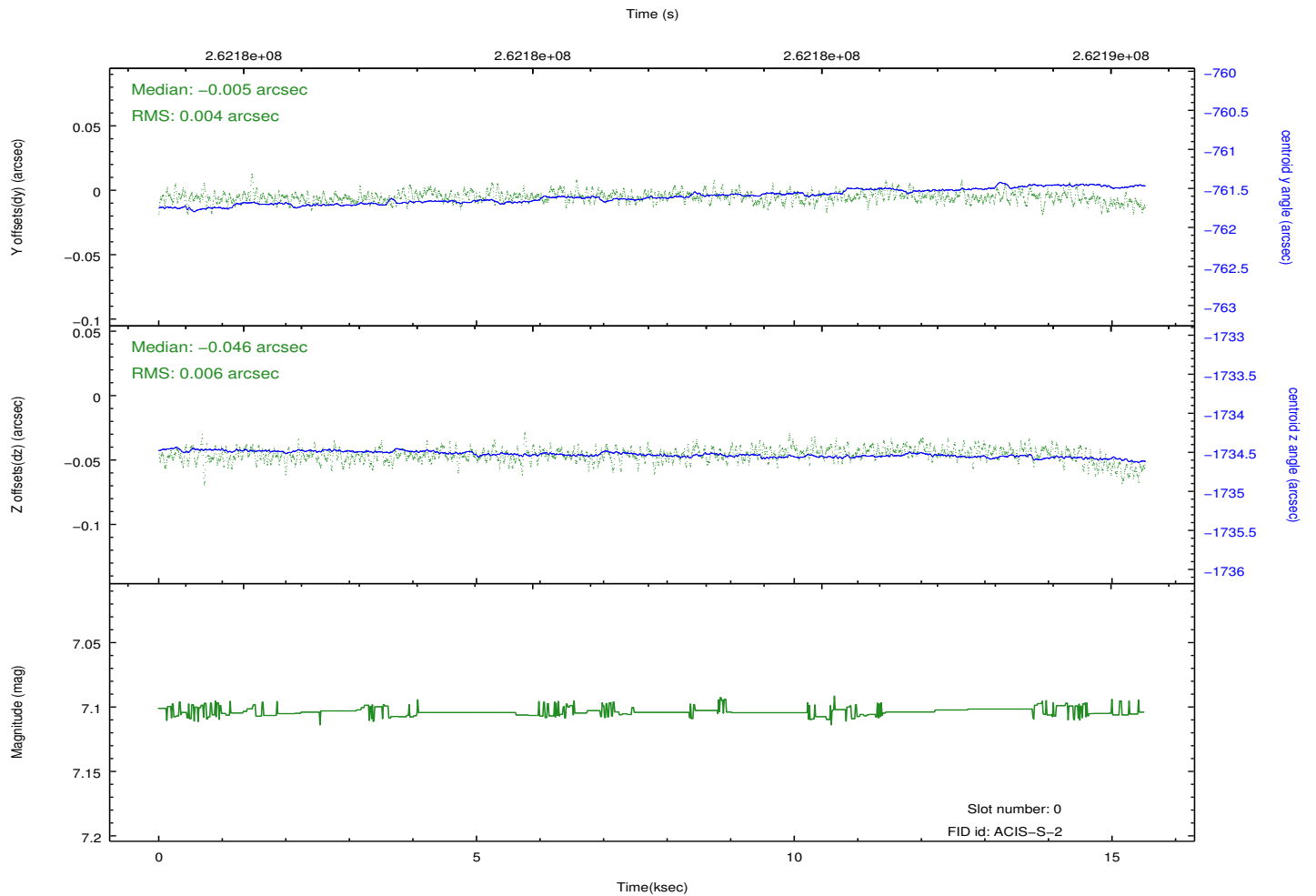
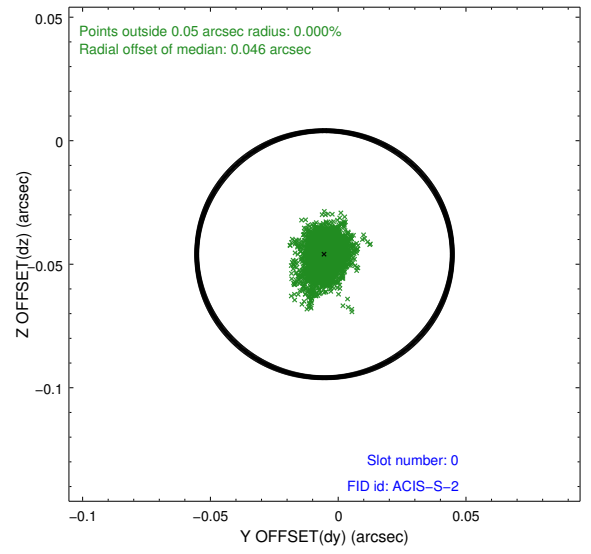
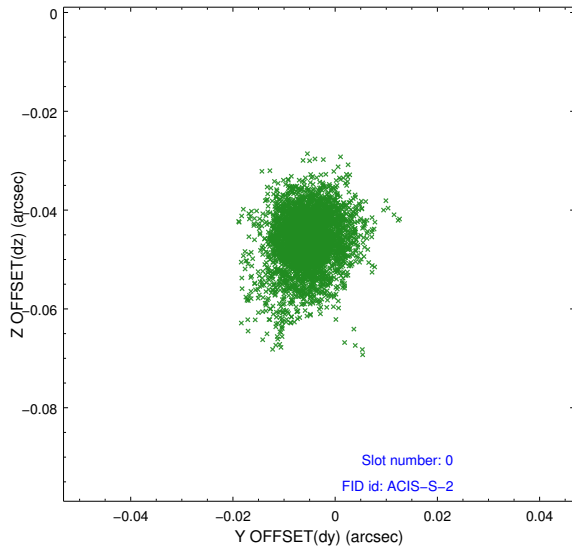


Time (s)

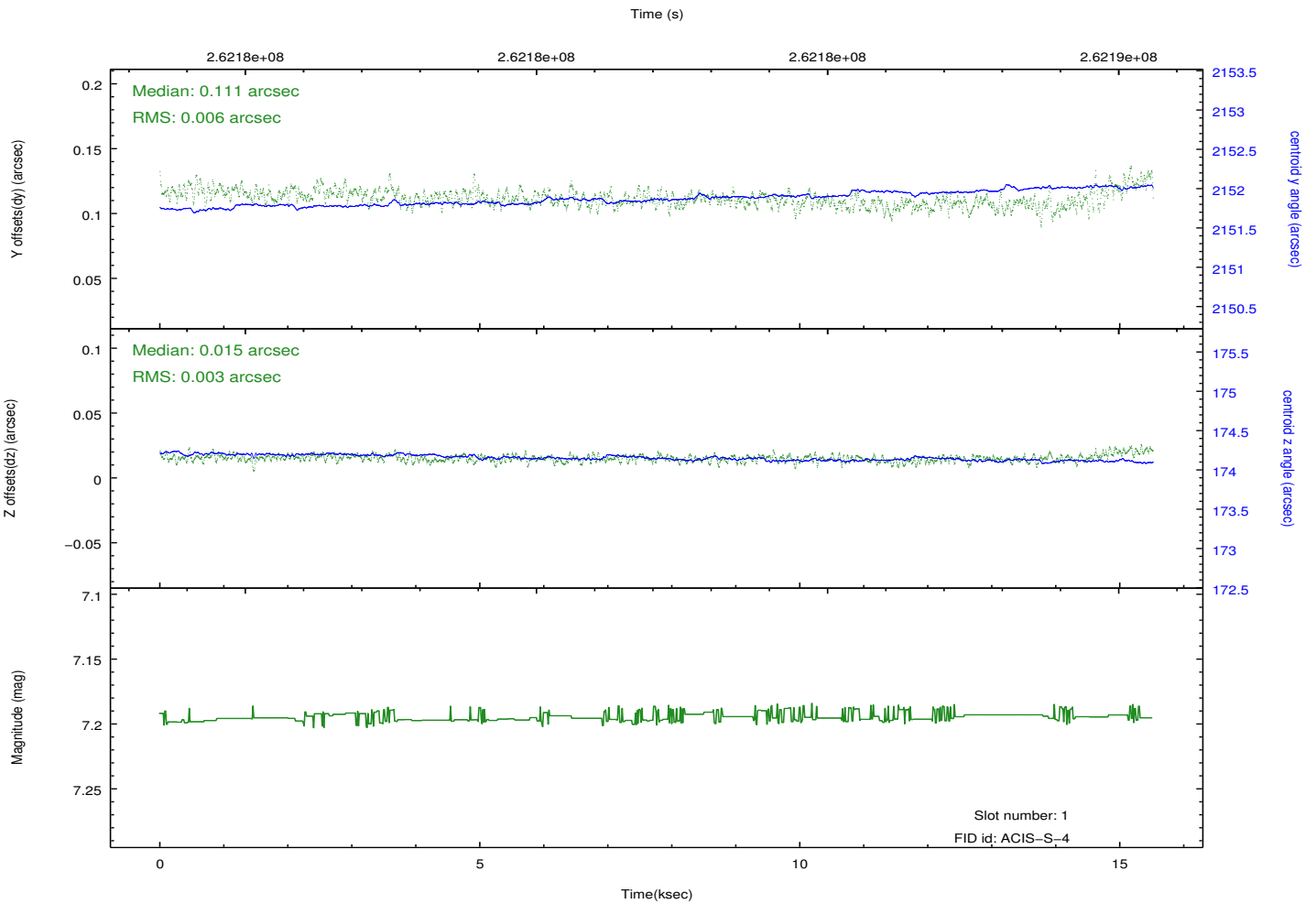
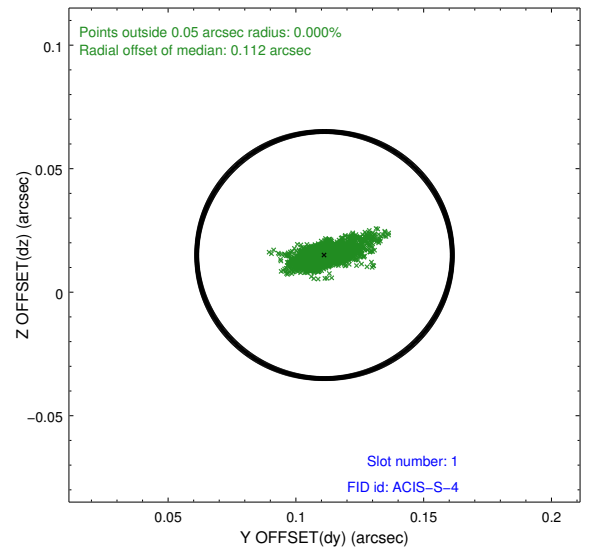
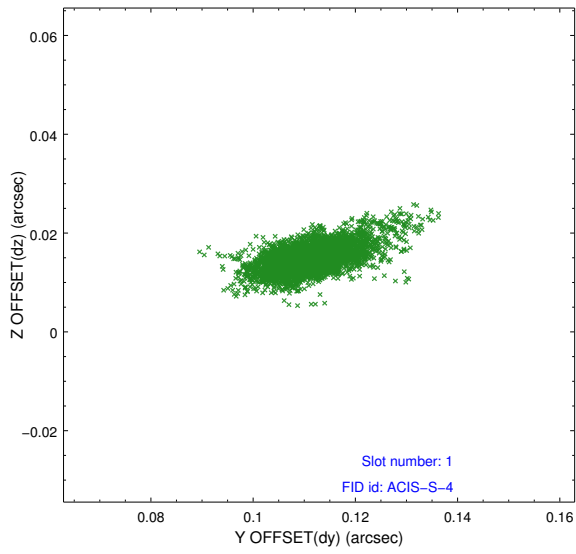


2.5 FID Slots

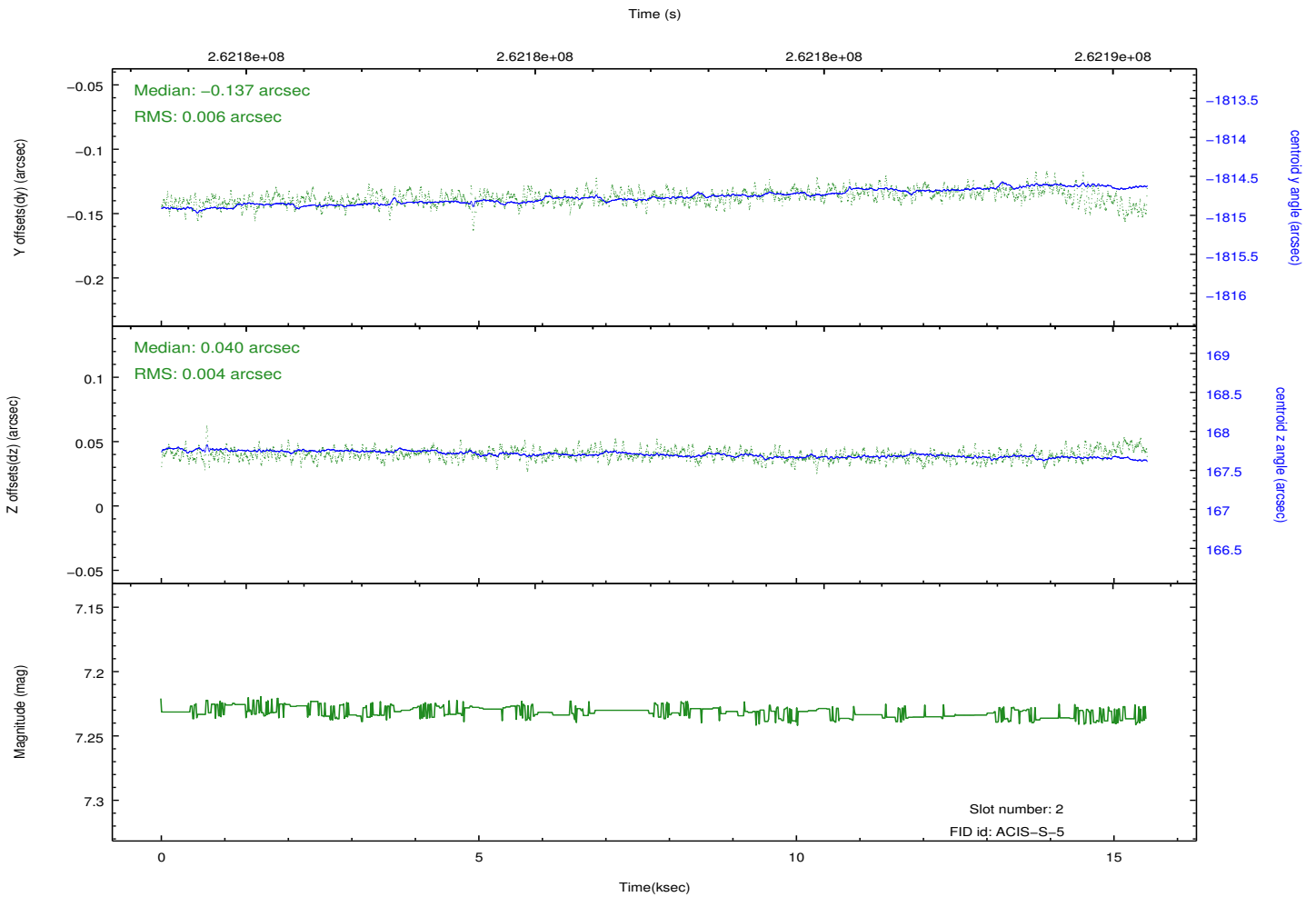
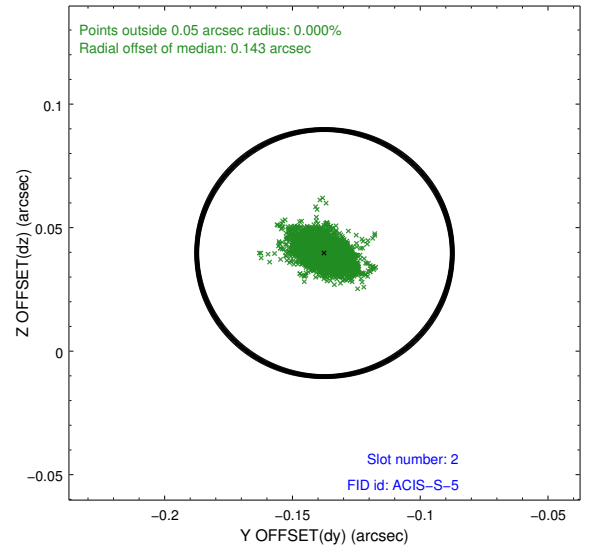
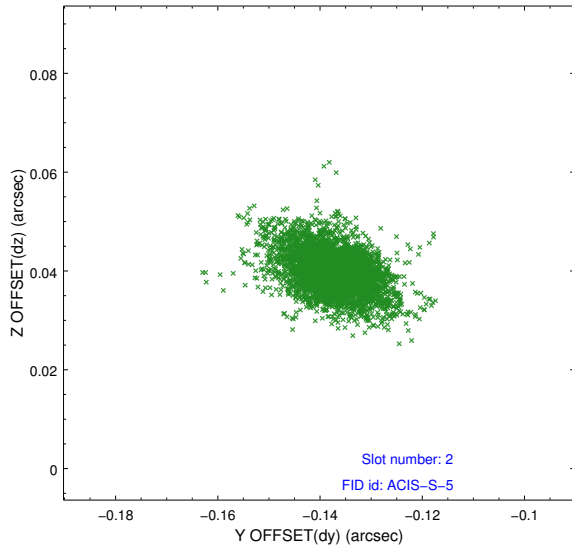
2.5.1 Slot 0



2.5.2 Slot 1



2.5.3 Slot 2



A Summary

A.1 Status

V&V Scientist	Jen Lauer
V&V Date (YYYY-MM-DD)	2012.04.02
V&V Edition	1
V&V Disposition and Status	OK
V&V Charge Time	15.0941999

A.2 Comments