

V&V Reference Report

L2 ASCDS Version : 8.4.3.1

Observation 6940 - L2 Version 3
Chandra X-Ray Center

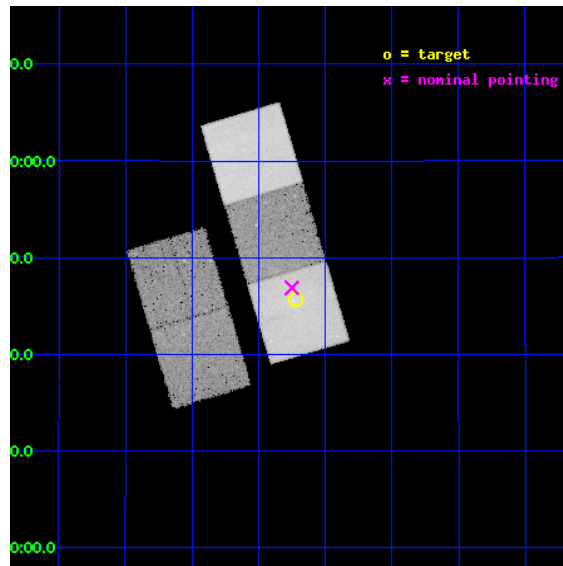
L2 Processing Date : Apr 16 2012

Contents

1	Front	2
2	OBI	3
2.1	OBI	3
2.1.1	Images	3
2.1.2	Bias	3
2.1.3	Parameters	4
2.1.4	Events	4
2.2	Compared Parameters	5
2.3	Aspect	6
2.4	Star Slots	9
2.4.1	Slot 3	9
2.4.2	Slot 4	10
2.4.3	Slot 5	11
2.4.4	Slot 6	12
2.4.5	Slot 7	13
2.5	FID Slots	14
2.5.1	Slot 0	14
2.5.2	Slot 1	15
2.5.3	Slot 2	16
A	Summary	17
A.1	Status	17
A.2	Comments	17

1 Front

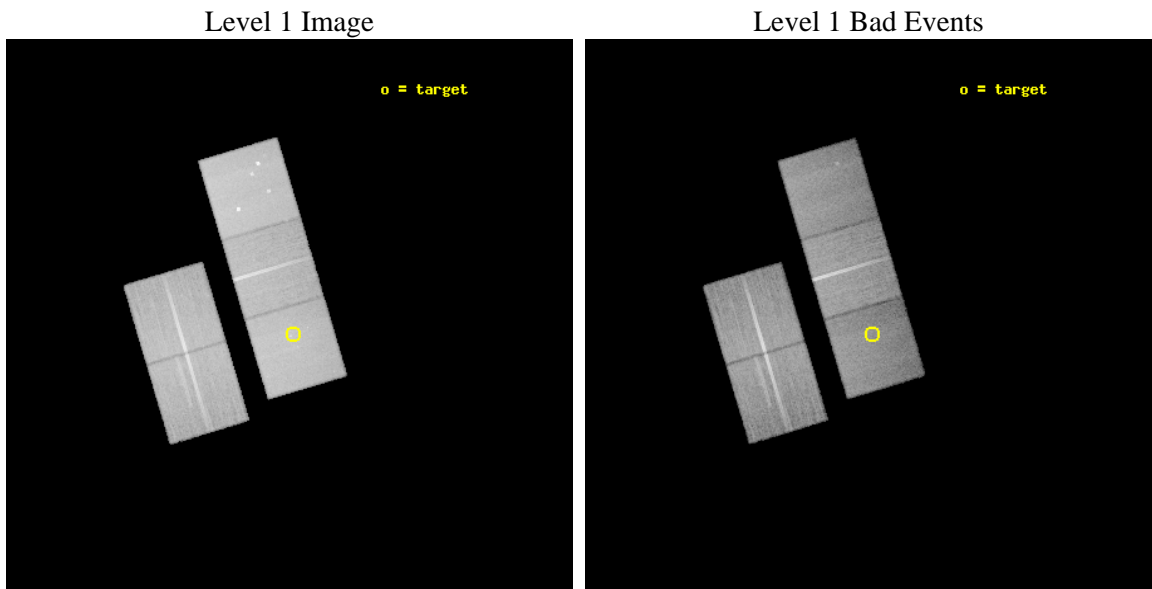
seq_num	800573	Sequence number
obs_id	6940	Observation id
title	The Cosmological Formation of Galaxy Groups	Proposal title
observer	Dr. DAVID BUOTE	Principal investigator
object	RXC J1109.7+2145	Source name
dtycycle	0	
cycle	P	events from which exps? Prim/Second/Both
ra_targ	167.429583	Observer's specified target RA [deg]
dec_targ	21.761944	Observer's specified target Dec [deg]
ra_nom	167.43768769568	Nominal RA [deg]
dec_nom	21.781375532988	Nominal Dec [deg]
roll_nom	73.43727620129	Nominal Roll [deg]
revision	3	Processing version of data
ontime	34077.192115545	Sum of GTIs [s]
livetime	33631.948513292	Livetime [s]
ontime2	34070.746004939	Sum of GTIs [s]
ontime3	34070.787054837	Sum of GTIs [s]
ontime5	34077.151075542	Sum of GTIs [s]
ontime6	34073.969035327	Sum of GTIs [s]
ontime7	34077.192115545	Sum of GTIs [s]
l2events	370340	Number of level 2 events



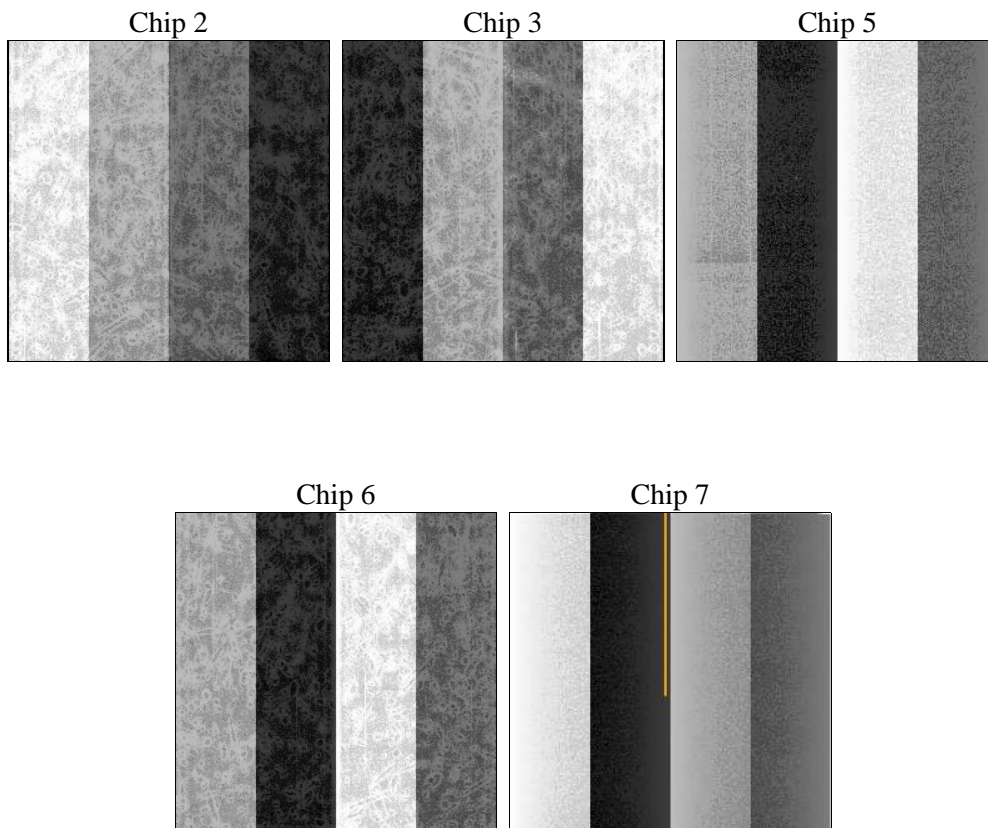
2 OBI

2.1 OBI

2.1.1 Images



2.1.2 Bias



2.1.3 Parameters

obi_num	0	Obi number	sched_exp_time	34000.000000	[s] Scheduled observation exposure time
ascdsver	8.4.3.1	Processing system revision	ontime	34077.192115545	Sum of GTIs [s]
caldbver	4.4.9	 	ontime2	34070.746004939	Sum of GTIs [s]
date	2012-04-16T04:59:17	Date and time of file creation	ontime3	34070.787054837	Sum of GTIs [s]
revision	3	Processing version of data	ontime5	34077.151075542	Sum of GTIs [s]
			ontime6	34073.969035327	Sum of GTIs [s]
			ontime7	34077.192115545	Sum of GTIs [s]
			l1events	1425564	Number of level 1 events

2.1.4 Events

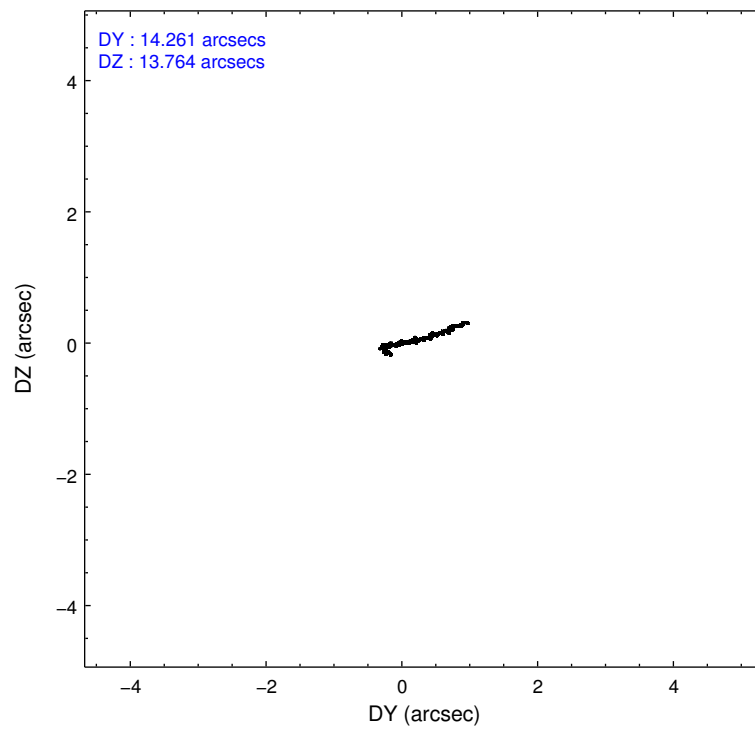
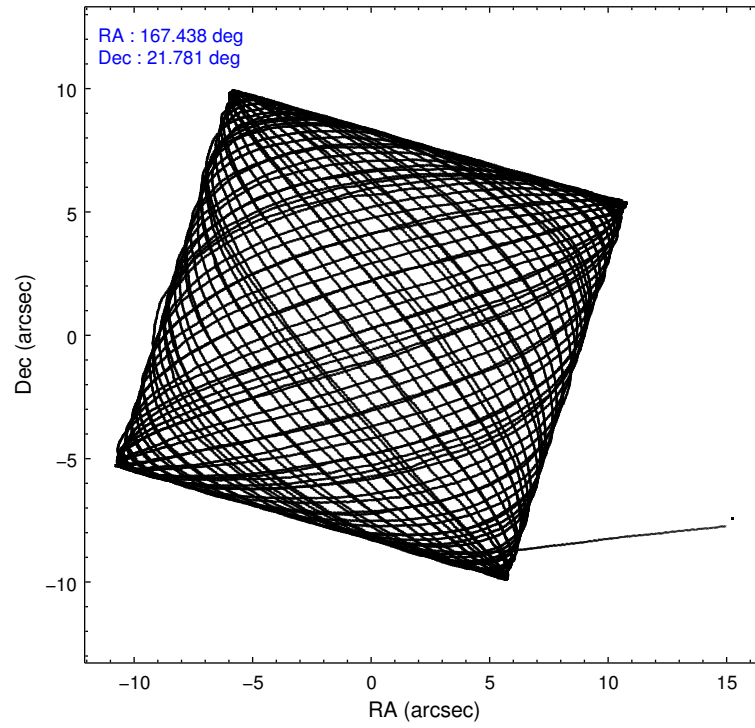
	ccd 2	ccd 3	ccd 5	ccd 6	ccd 7
level 1 events	265749	247758	353817	259632	298608
rejected events	241003	223890	177124	231520	154368
rejected %	90%	90%	50%	89%	51%

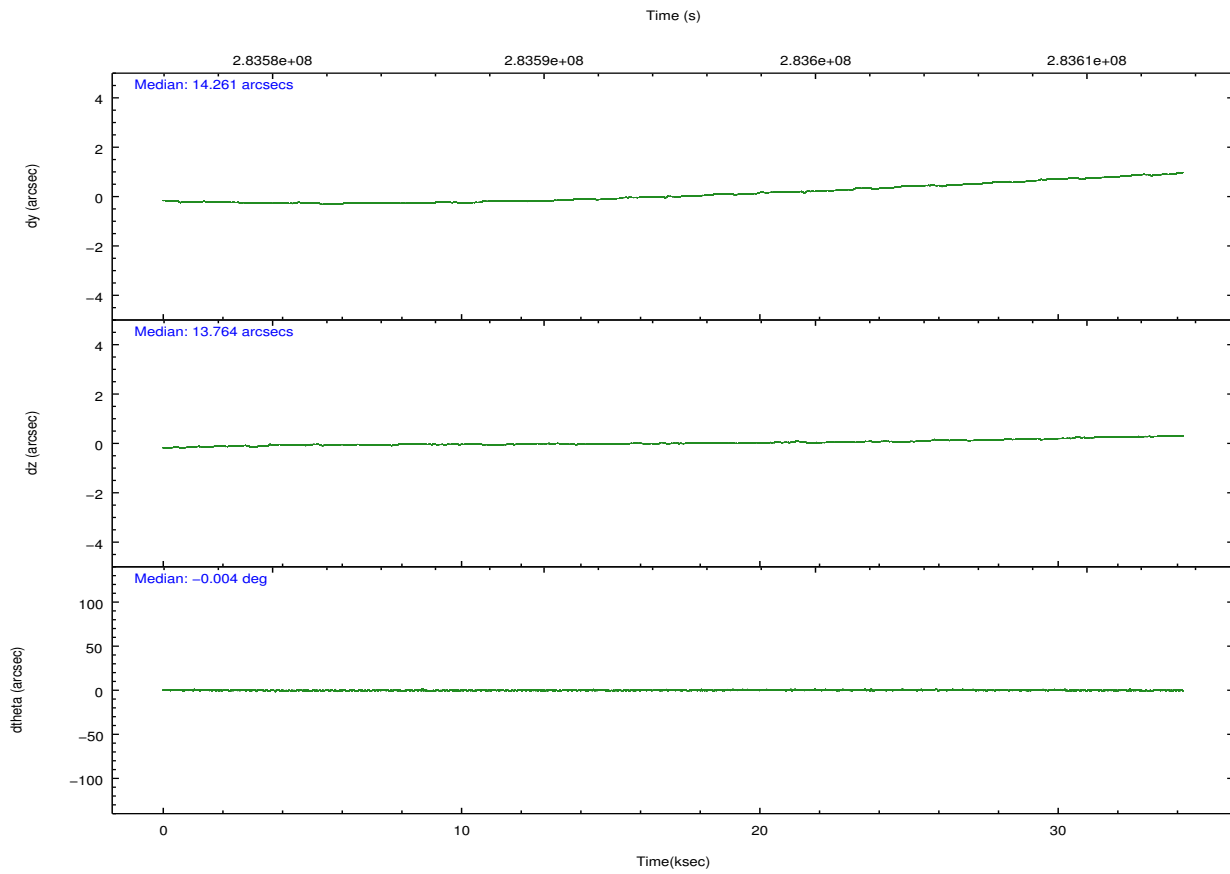
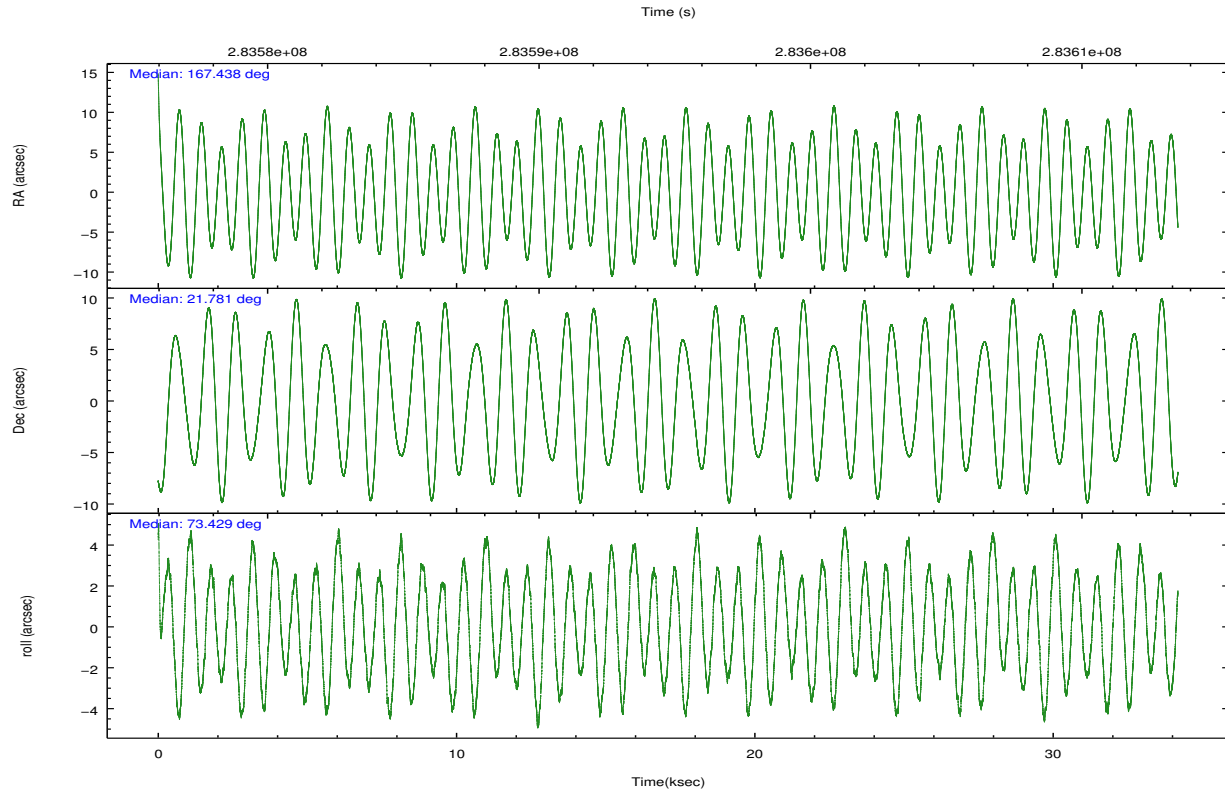
	ccd 2	ccd 3	ccd 5	ccd 6	ccd 7
grade 0 events	9000	8346	19972	10705	17352
	3%	3%	5%	4%	5%
grade 1 events	149	115	794	115	338
	0%	0%	0%	0%	0%
grade 2 events	5777	5283	51259	5856	29985
	2%	2%	14%	2%	10%
grade 3 events	2670	2738	7667	2930	13635
	1%	1%	2%	1%	4%
grade 4 events	2790	2780	7247	2866	13707
	1%	1%	2%	1%	4%
grade 5 events	8228	10062	28297	10286	29911
	3%	4%	7%	3%	10%
grade 6 events	4517	4729	90571	5759	69589
	1%	1%	25%	2%	23%
grade 7 events	232618	213705	148010	221115	124091
	87%	86%	41%	85%	41%

2.2 Compared Parameters

Parameter	Planned	Actual	Parameter	Planned	Actual
Instrument	ACIS	ACIS	Obspar format version number	7	7
Detector	ACIS-23567	ACIS-23567	Obspar file type	PREDICTED	ACTUAL
Grating	NONE	NONE	Obspar update status	NONE	UPDATED
Data mode	VFAINT	VFAINT	Number of optional ACIS chips dropped	0	0
Observation mode	POINTING	POINTING	On-chip summing requested	N	N
[deg] Pointing RA	167.444908	167.4376876956782	Subarray requested	NONE	NONE
[deg] Pointing Dec	21.754887	21.78137553298833	Alternating exposures requested	N	N
[deg] Pointing Roll	73.277969	73.43727620128972	[s] Primary exposure time	0.000000	3.1
[mm] SIM focus pos	-0.684267	-0.6828225247311905			
[mm] SIM defocus	0	0.001444936568705701			
[mm] SIM translation stage pos	-190.132523	-190.1400660498719			
[mm] SIM translation stage offset	0	0.00754346686406393			
[s] Observation start time (MET)	283577846.184000	283576889.67271			
Observation start date	2006-12-27T03:36:21	2006-12-27T03:21:29			
[s] Observation end time (MET)	283611846.184000	283612445.3869			
Observation end date	2006-12-27T13:03:01	2006-12-27T13:14:05			
Read mode	TIMED	TIMED			

2.3 Aspect





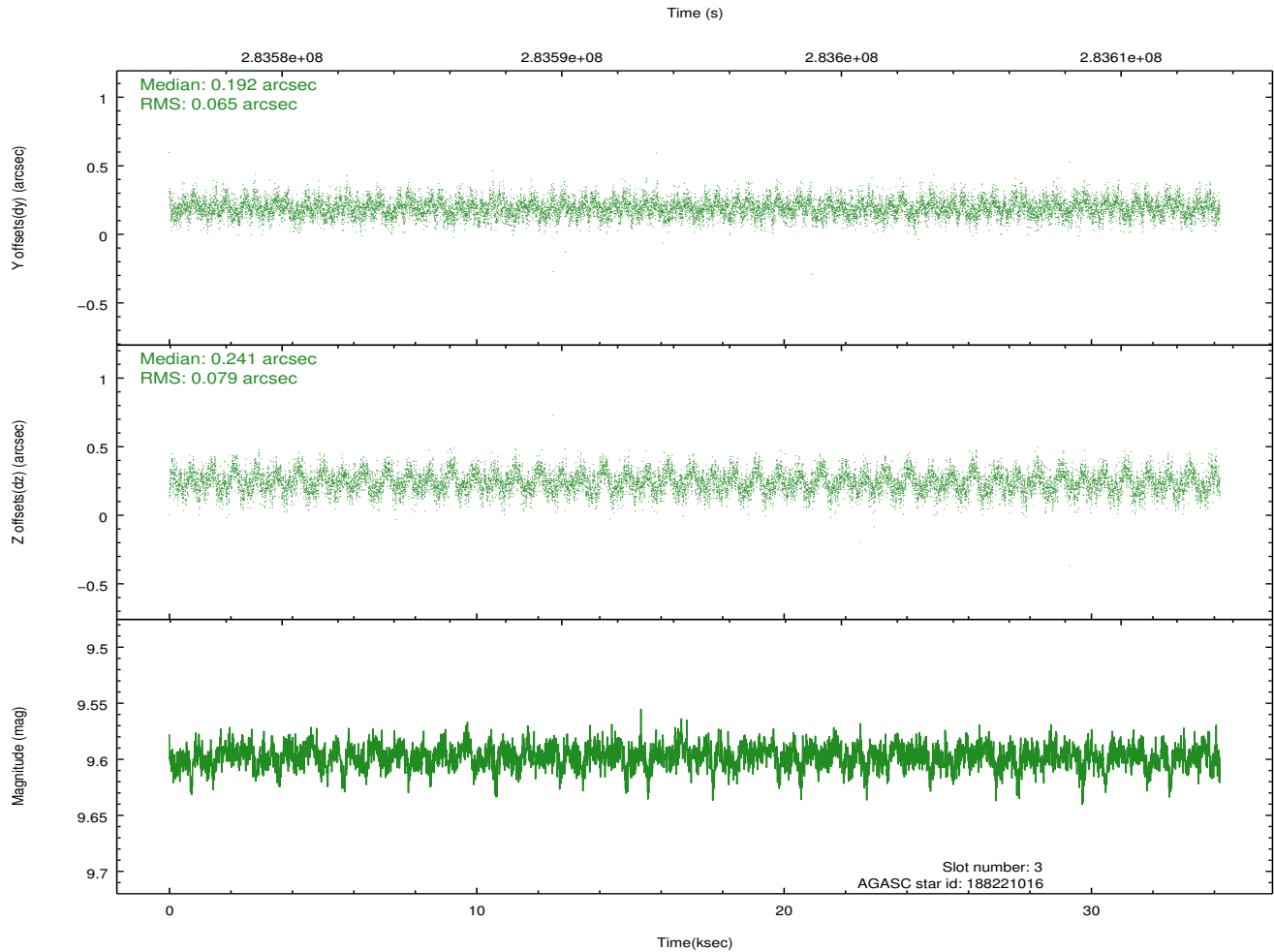
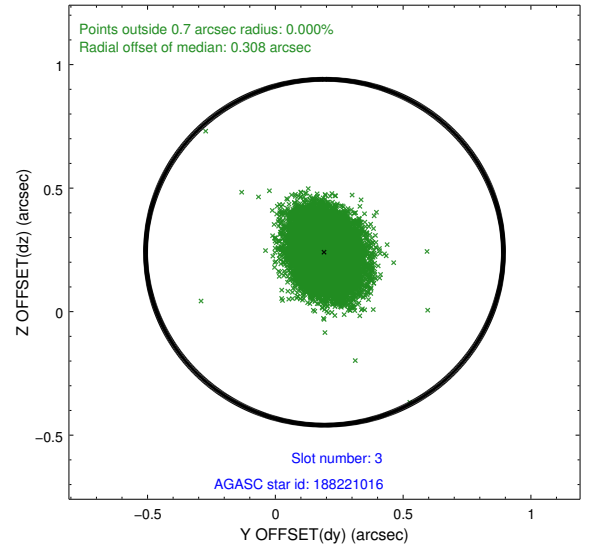
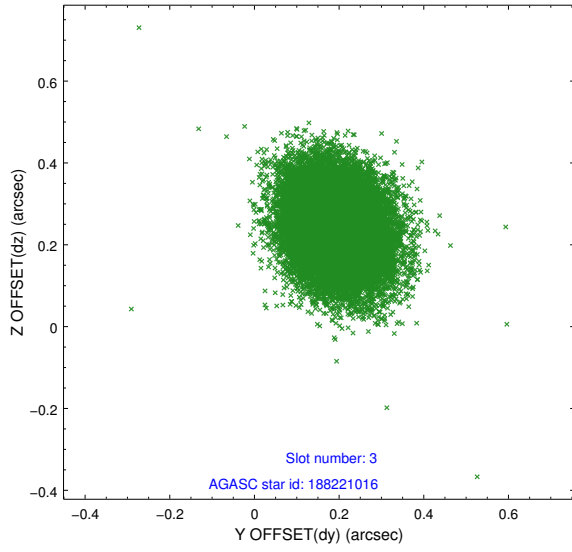
Slot Statistics

slot	status	id	mag	n_pts	med_dy	med_dz	dr1	dr2	ra	dec	mean_y	mean_z
0	FID	ACIS-S-2	7.09	8338	-0.071	-0.078	0.016	0.029	0.000000	0.000000	-767.43	-1735.21
1	FID	ACIS-S-4	7.20	8338	0.224	0.056	0.016	0.024	0.000000	0.000000	2146.14	173.33
2	FID	ACIS-S-5	7.22	8338	-0.181	0.031	0.009	0.017	0.000000	0.000000	-1820.30	167.06
3	GUIDE	188221016	9.60	16655	0.192	0.241	0.110	0.175	167.543028	21.644554	-285.31	-427.92
4	GUIDE	188222712	9.51	16662	0.240	-0.080	0.110	0.176	167.004644	21.369680	-1751.62	1015.18
5	GUIDE	188224088	9.10	16598	-0.129	-0.175	0.090	0.145	166.947124	22.071246	615.38	1919.27
6	GUIDE	188225528	8.81	16671	0.092	-0.260	0.077	0.123	166.720915	21.557455	-1372.71	2118.59
7	GUIDE	188620088	7.49	16676	-0.396	0.270	0.054	0.088	168.055229	22.055422	1626.02	-1636.97

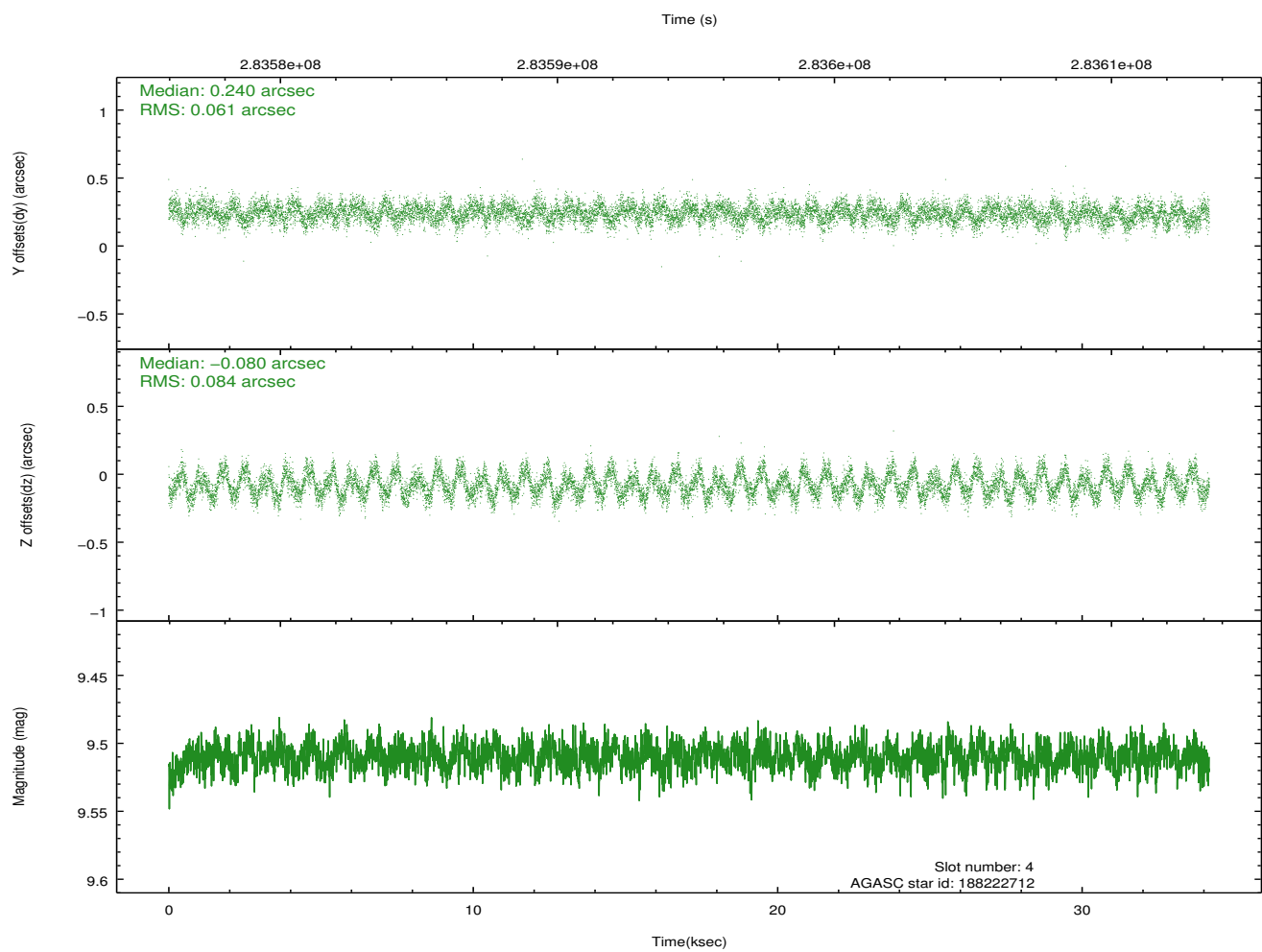
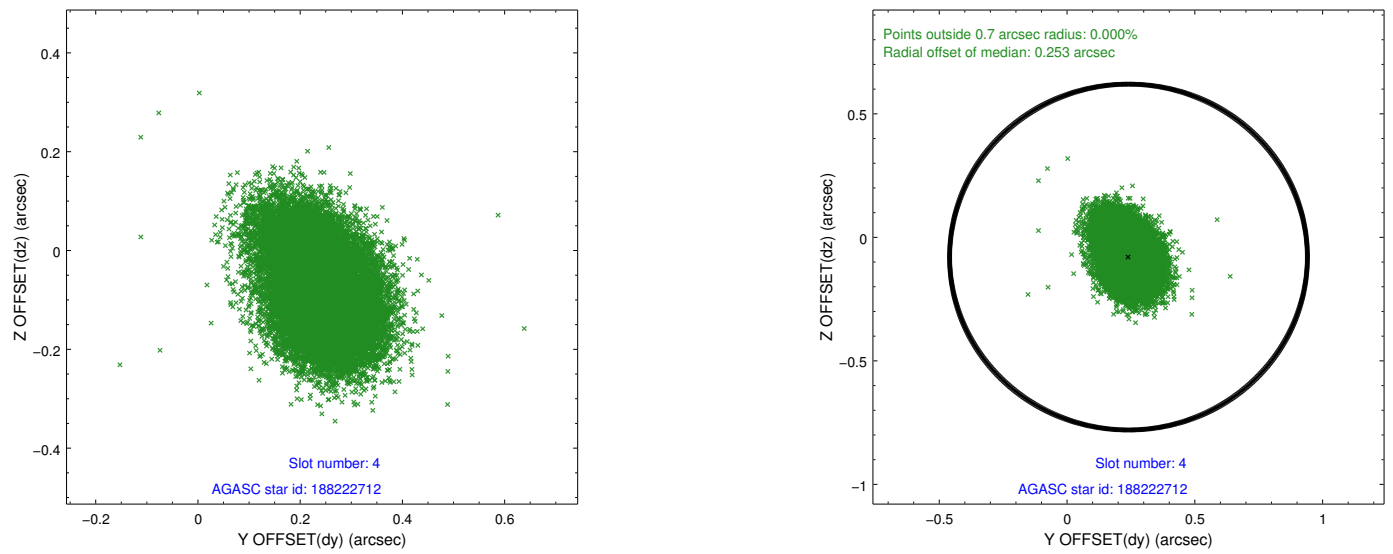
∞

2.4 Star Slots

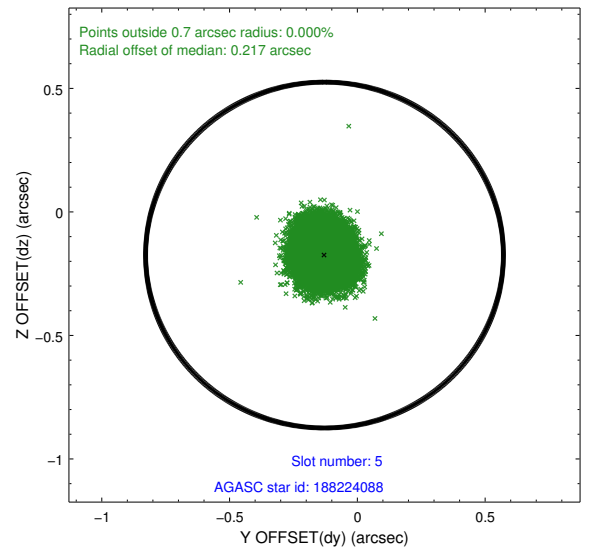
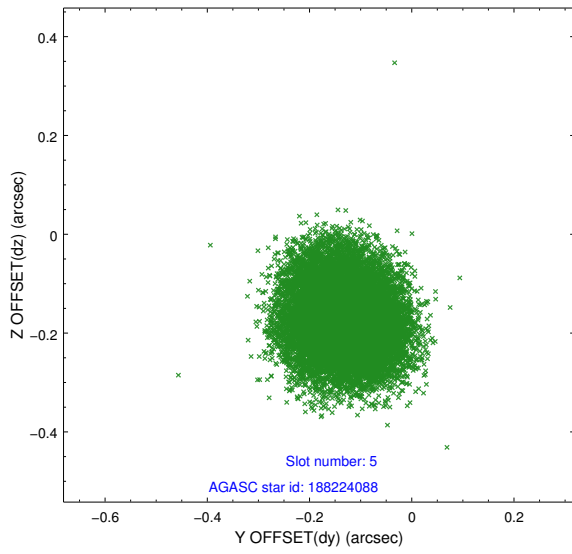
2.4.1 Slot 3



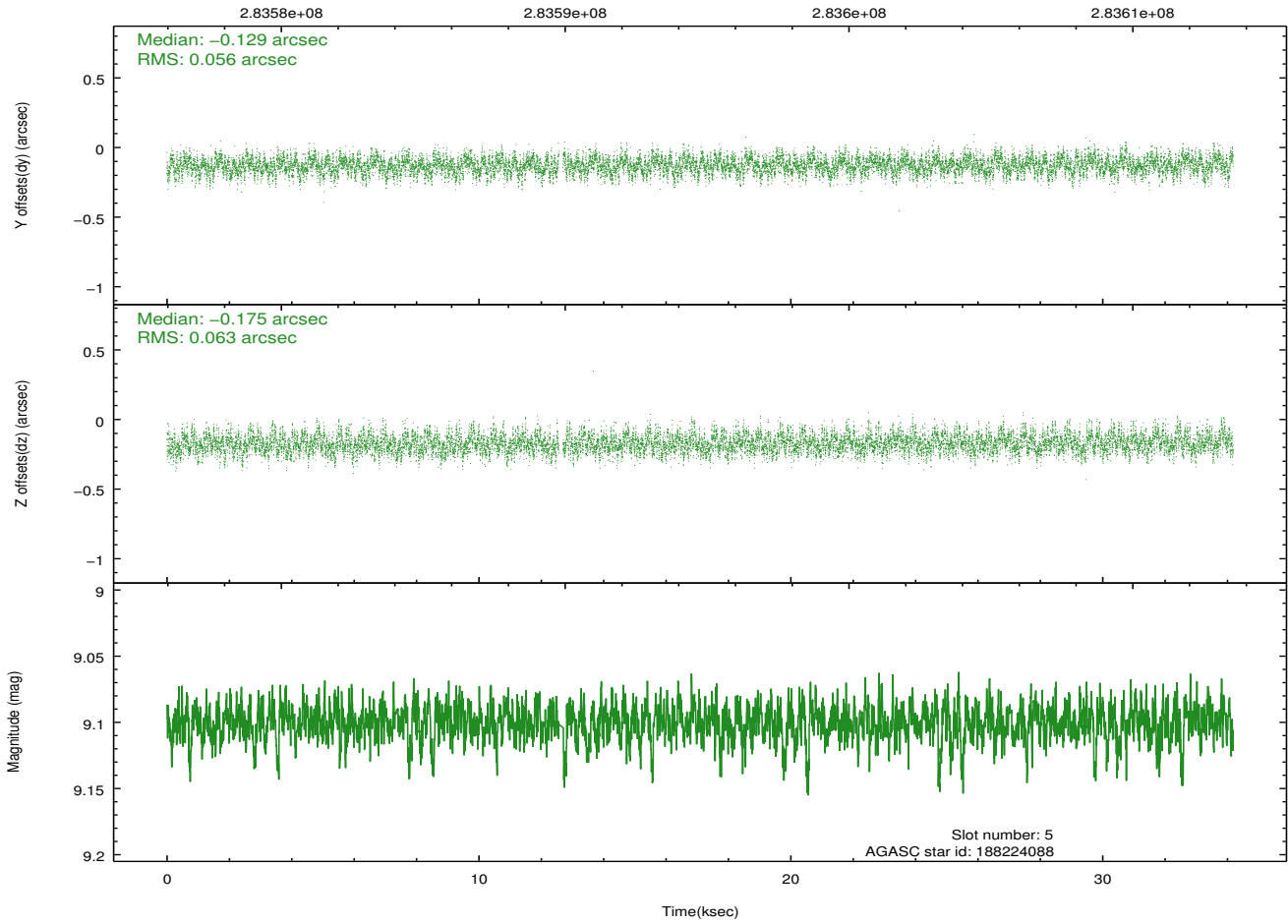
2.4.2 Slot 4



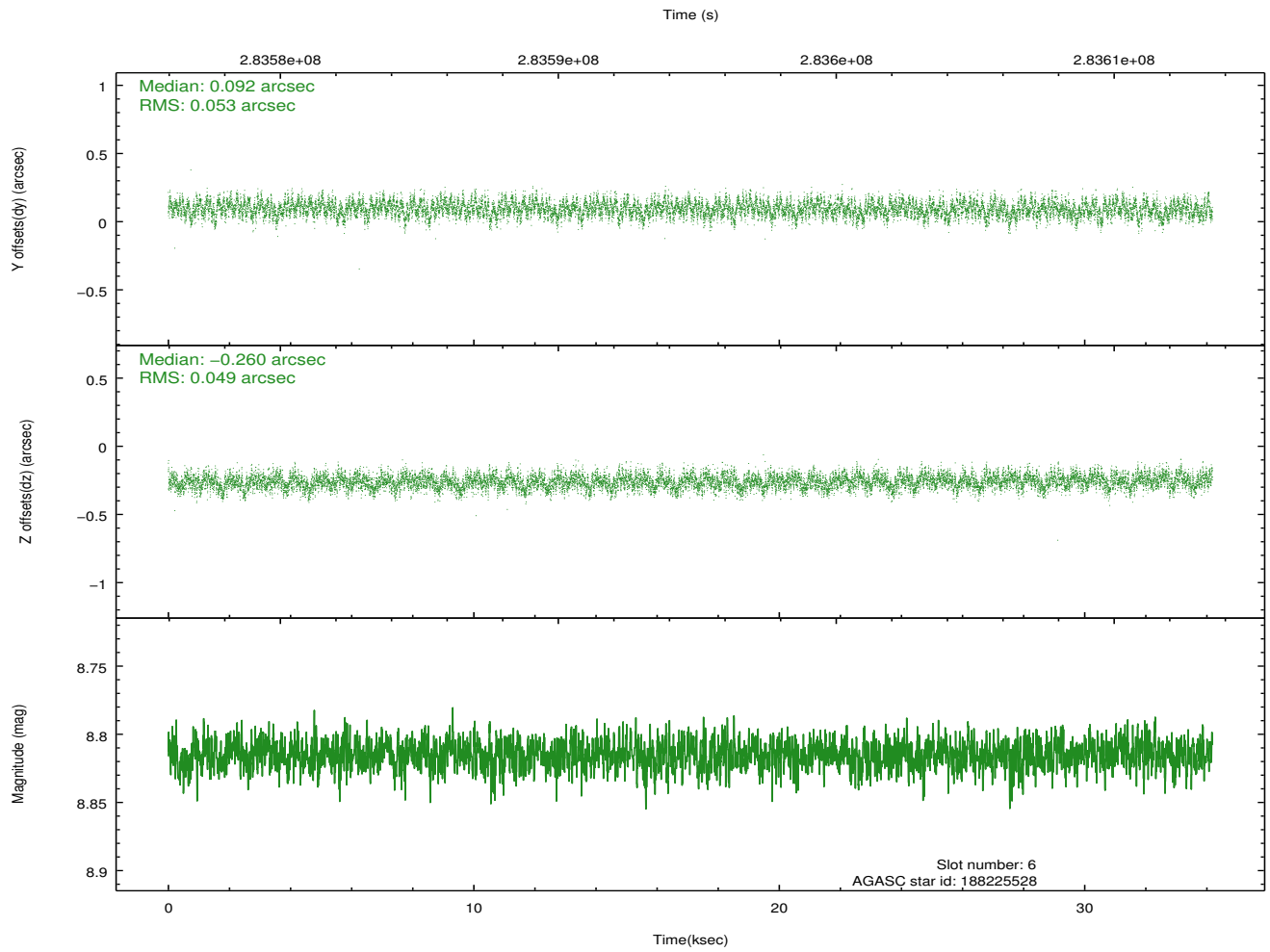
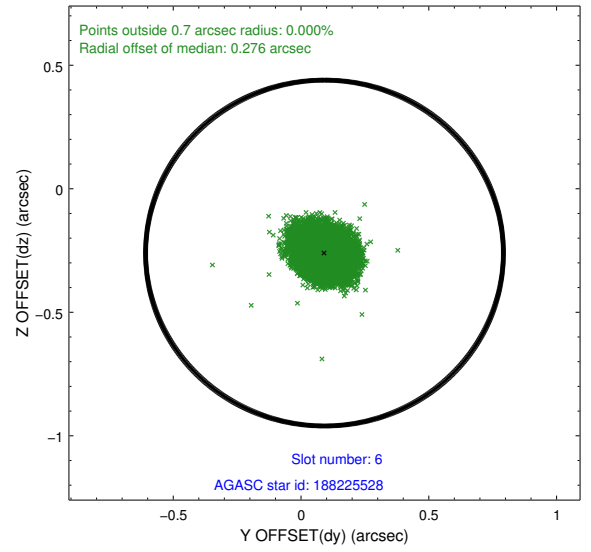
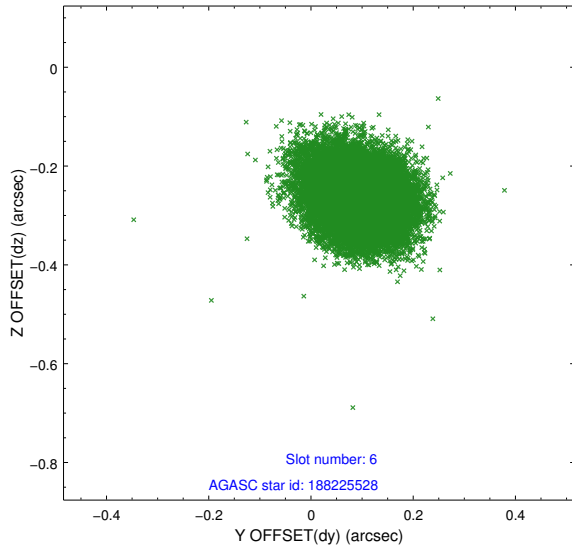
2.4.3 Slot 5



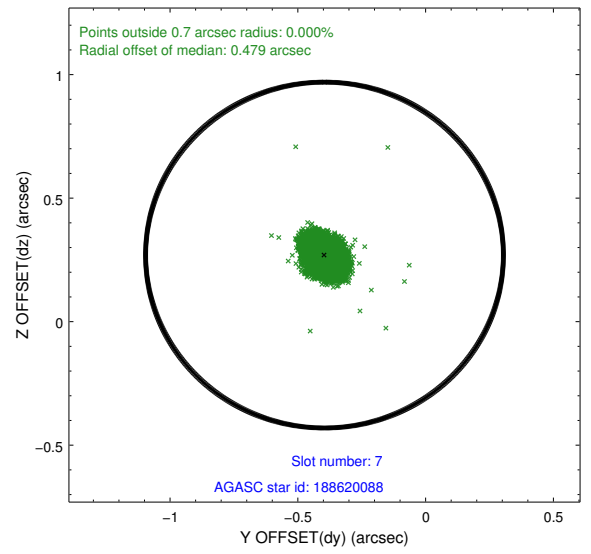
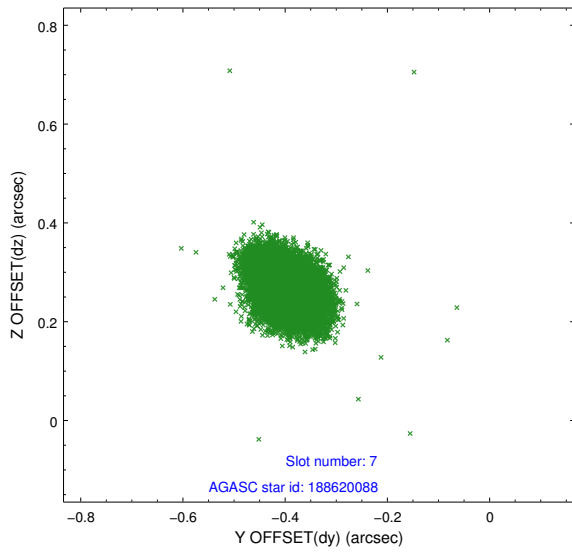
Time (s)



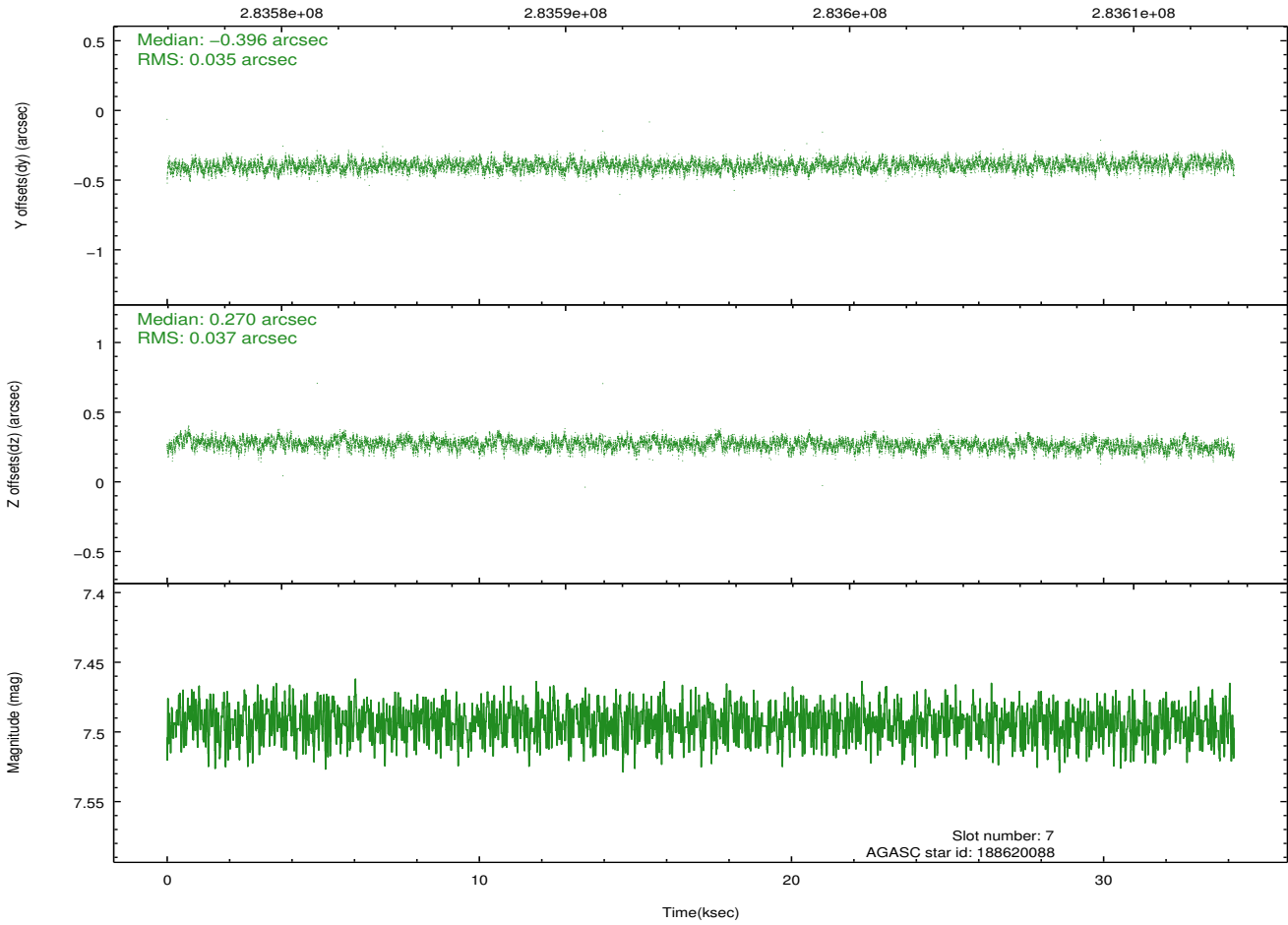
2.4.4 Slot 6



2.4.5 Slot 7

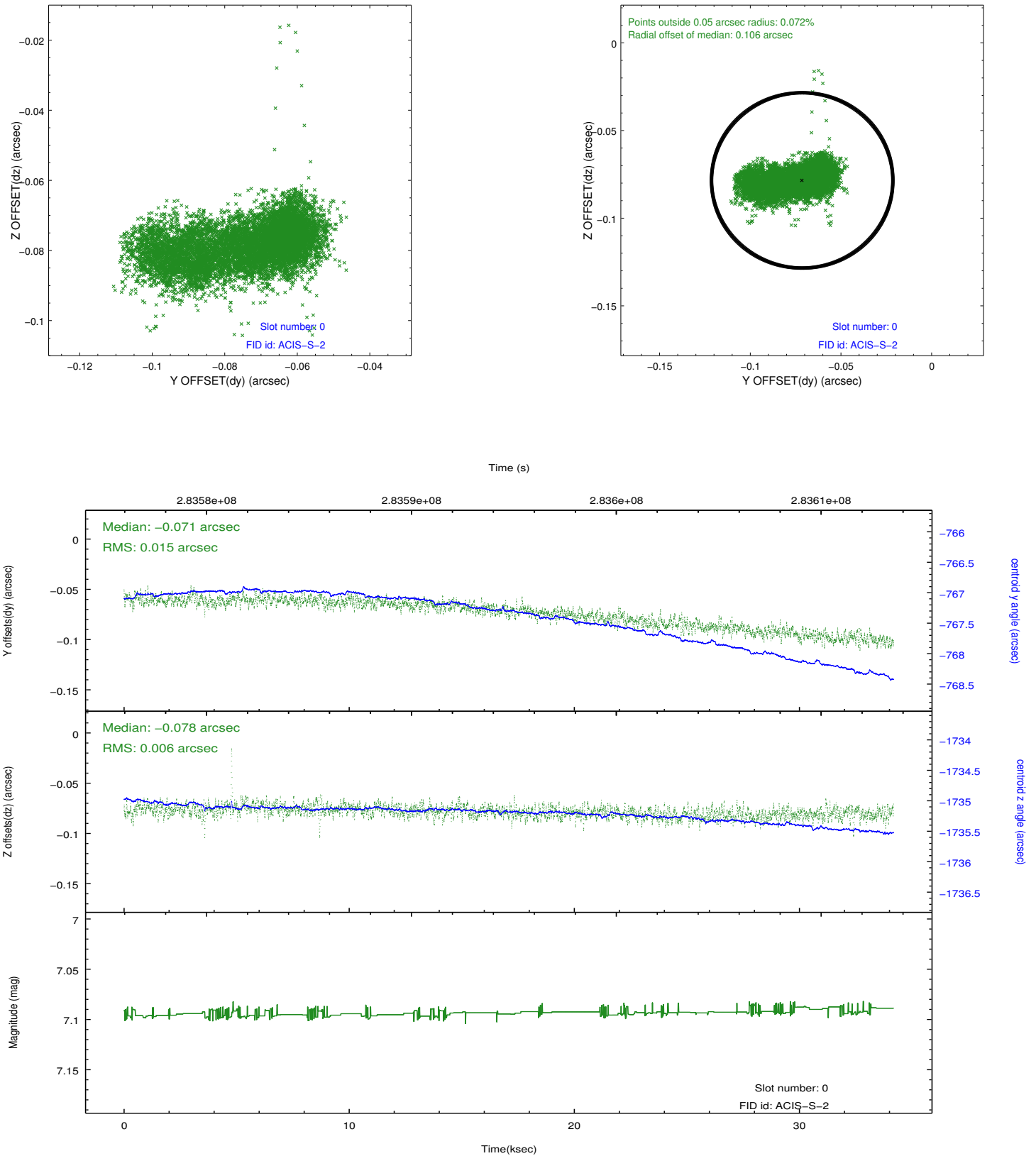


Time (s)

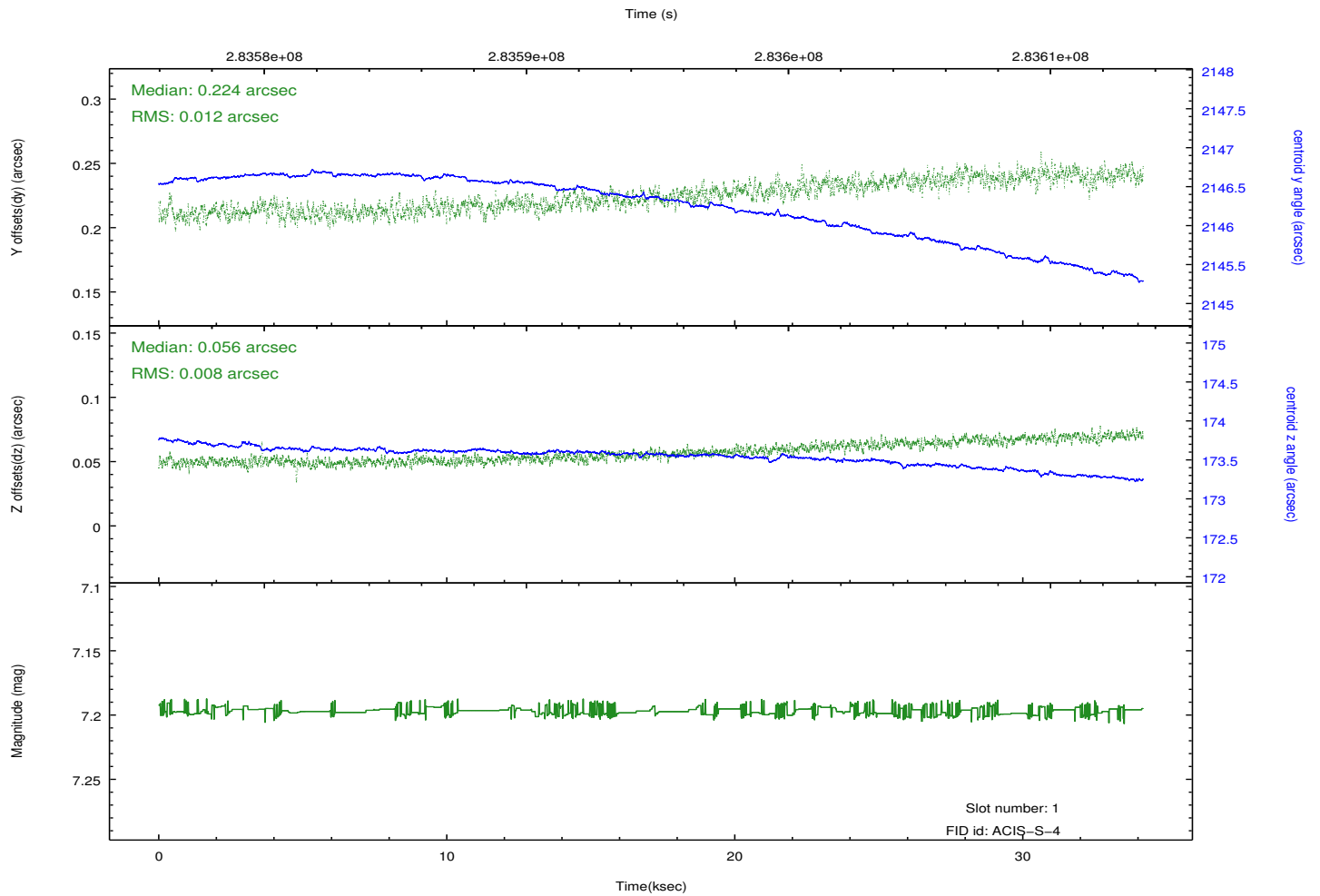
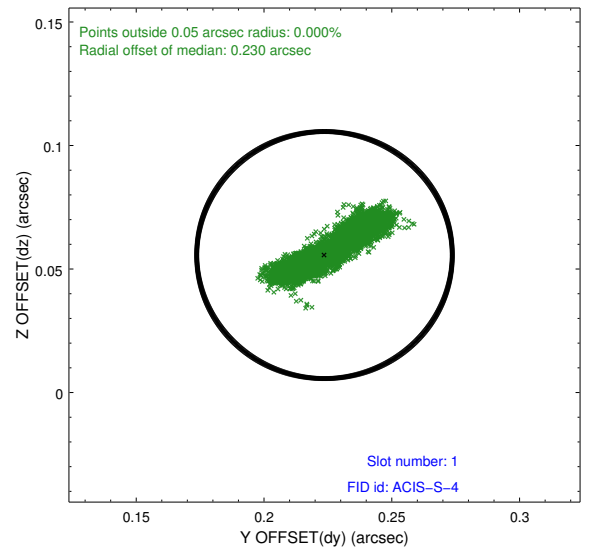
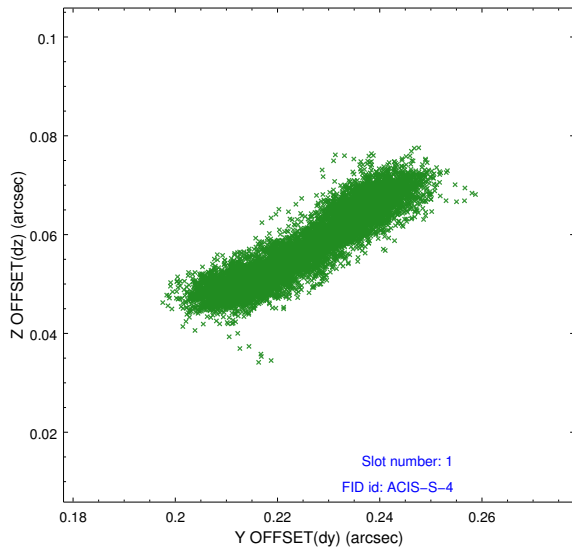


2.5 FID Slots

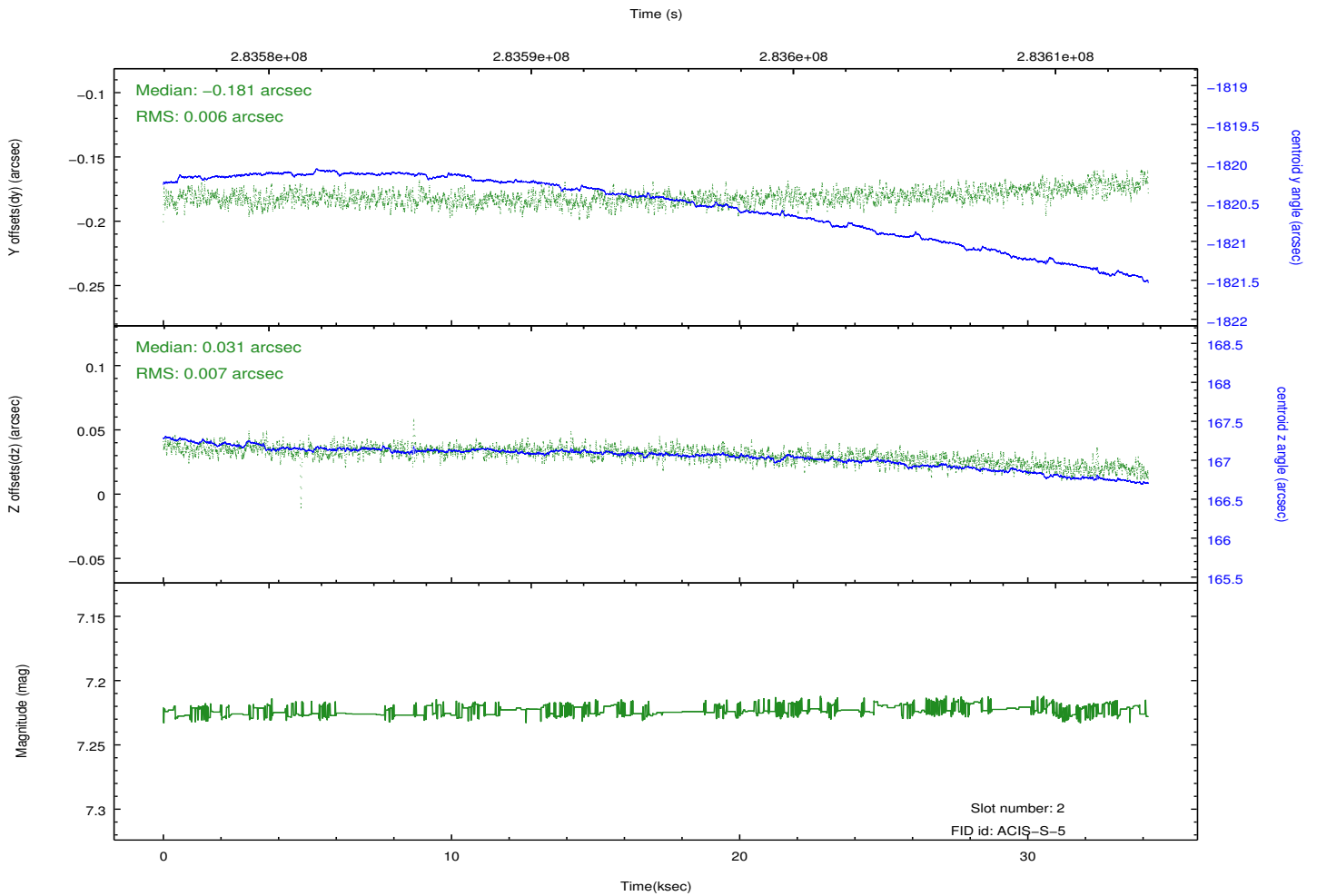
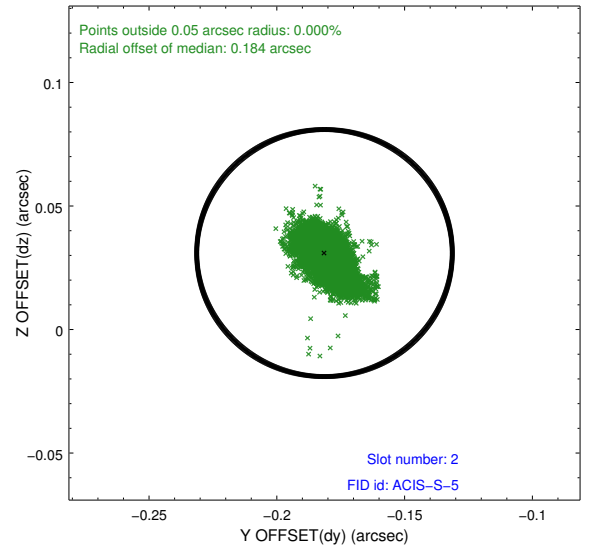
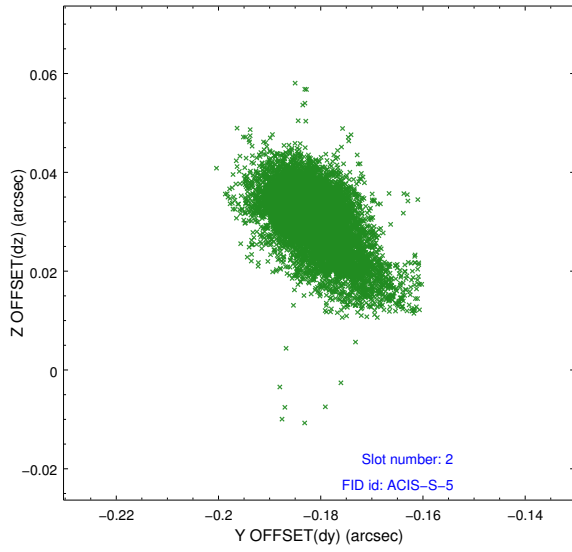
2.5.1 Slot 0



2.5.2 Slot 1



2.5.3 Slot 2



A Summary

A.1 Status

V&V Scientist	Beth Sundheim
V&V Date (YYYY-MM-DD)	2012.04.18
V&V Edition	1
V&V Disposition and Status	OK
V&V Charge Time	34.0783002

A.2 Comments