

V&V Reference Report

L2 ASCDS Version : 8.4.3

Observation 7020 - L2 Version 2
Chandra X-Ray Center

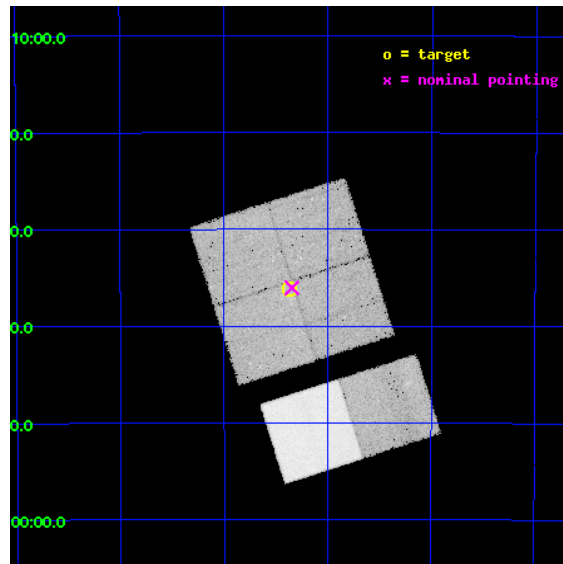
L2 Processing Date : Mar 30 2012

Contents

1	Front	2
2	OBI	3
2.1	OBI	3
2.1.1	Images	3
2.1.2	Bias	3
2.1.3	Parameters	4
2.1.4	Events	4
2.2	Compared Parameters	5
2.3	Aspect	6
2.4	Star Slots	9
2.4.1	Slot 3	9
2.4.2	Slot 4	10
2.4.3	Slot 5	11
2.4.4	Slot 6	12
2.4.5	Slot 7	13
2.5	FID Slots	14
2.5.1	Slot 0	14
2.5.2	Slot 1	15
2.5.3	Slot 2	16
A	Summary	17
A.1	Status	17
A.2	Comments	17

1 Front

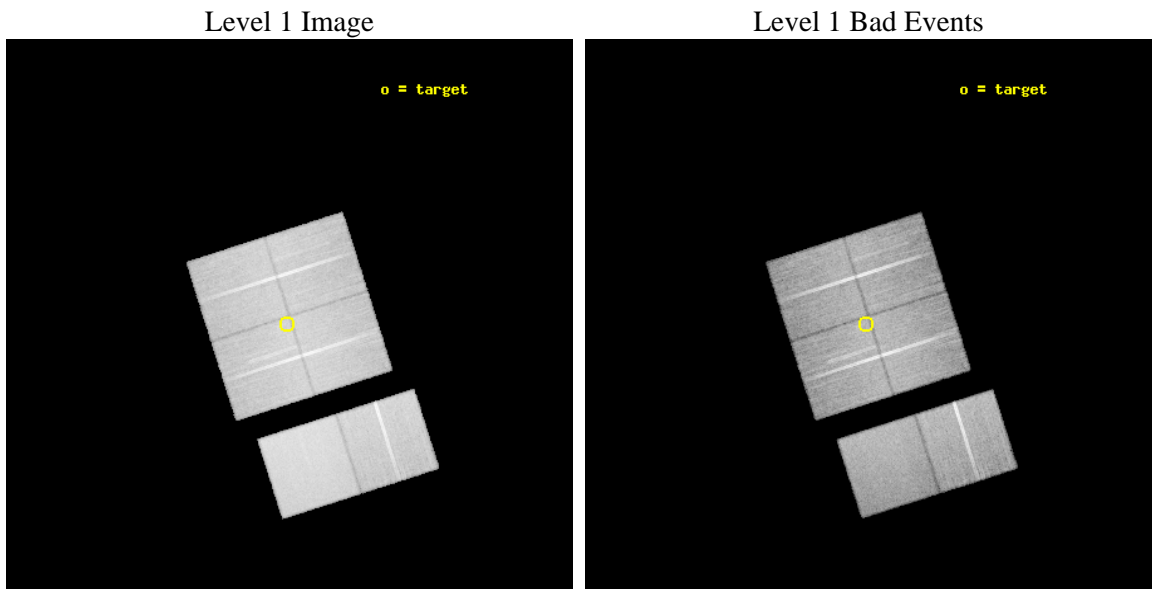
seq_num	900436	Sequence number
obs_id	7020	Observation id
title	The dark side of accretion: chasing type 2 QSOs	Proposal title
observer	Dr Fabrizio Fiore	Principal investigator
object	ELAIS-S1 E	Source name
dtycycle	0	
cycle	P	events from which exps? Prim/Second/Both
ra_targ	8.34125	Observer's specified target RA [deg]
dec_targ	-43.603889	Observer's specified target Dec [deg]
ra_nom	8.3363946232774	Nominal RA [deg]
dec_nom	-43.600866276938	Nominal Dec [deg]
roll_nom	162.31223379624	Nominal Roll [deg]
revision	2	Processing version of data
ontime	29948.717937976	Sum of GTIs [s]
livetime	29569.489238493	Livetime [s]
ontime0	29955.199888408	Sum of GTIs [s]
ontime1	29955.199888408	Sum of GTIs [s]
ontime2	29955.199888408	Sum of GTIs [s]
ontime3	29948.717937976	Sum of GTIs [s]
ontime6	29955.199888408	Sum of GTIs [s]
ontime7	29955.199888408	Sum of GTIs [s]
l2events	276553	Number of level 2 events



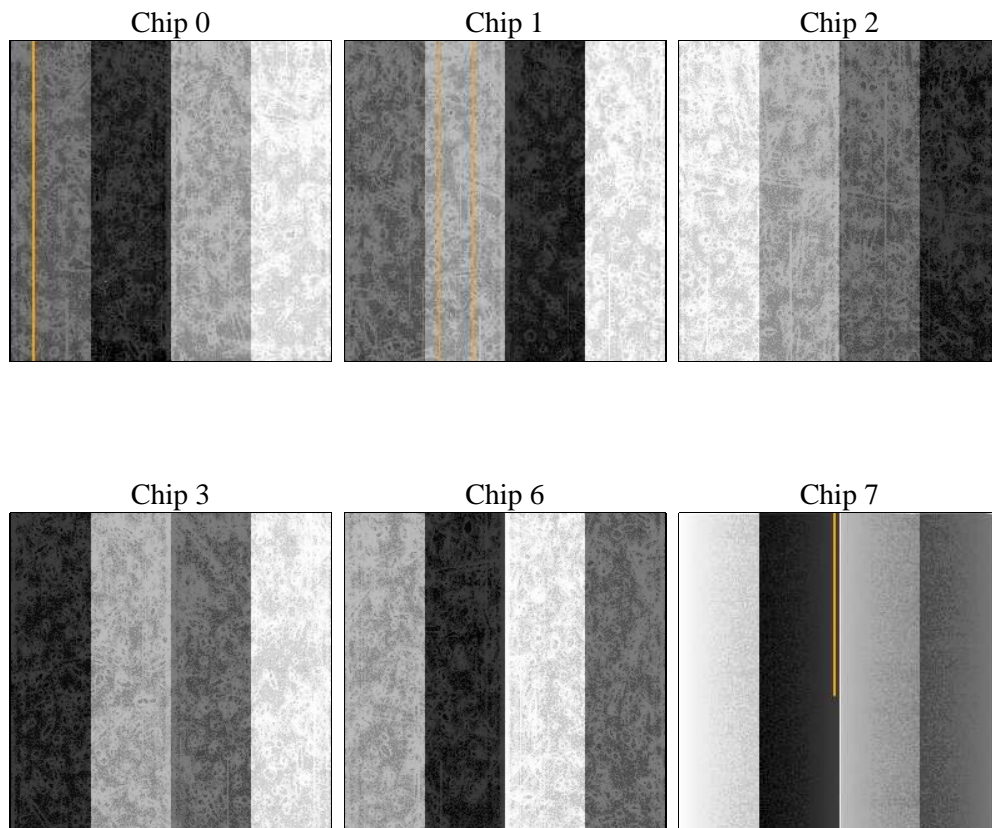
2 OBI

2.1 OBI

2.1.1 Images



2.1.2 Bias



2.1.3 Parameters

obi_num	0	Obi number	sched_exp_time	30000.000000	[s] Scheduled observation exposure time
ascdsver	8.4.3	Processing system revision	ontime	29948.717937976	Sum of GTIs [s]
caldbver	4.4.8	 	ontime0	29955.199888408	Sum of GTIs [s]
date	2012-03-30T06:22:27	Date and time of file creation	ontime1	29955.199888408	Sum of GTIs [s]
revision	2	Processing version of data	ontime2	29955.199888408	Sum of GTIs [s]
			ontime3	29948.717937976	Sum of GTIs [s]
			ontime6	29955.199888408	Sum of GTIs [s]
			ontime7	29955.199888408	Sum of GTIs [s]
			l1events	1619263	Number of level 1 events

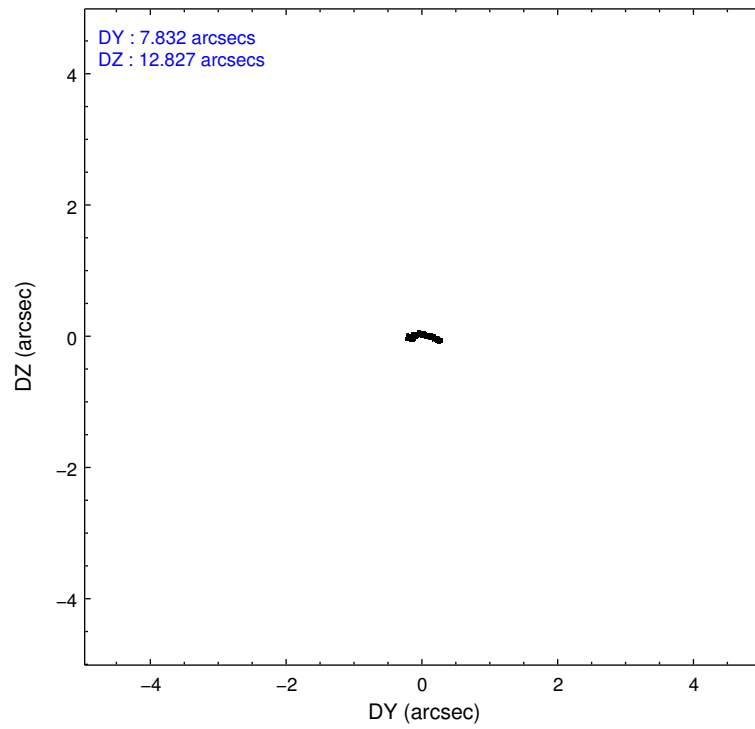
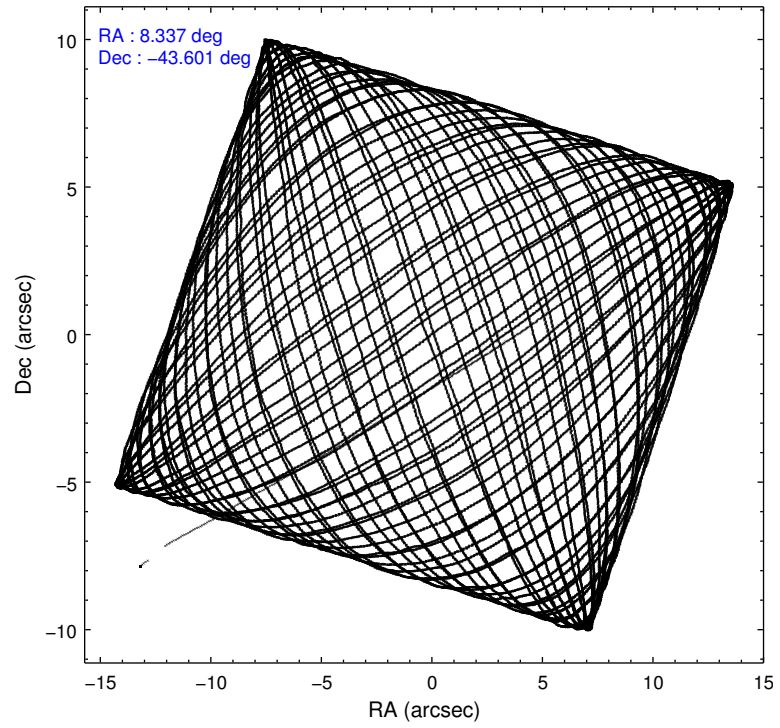
2.1.4 Events

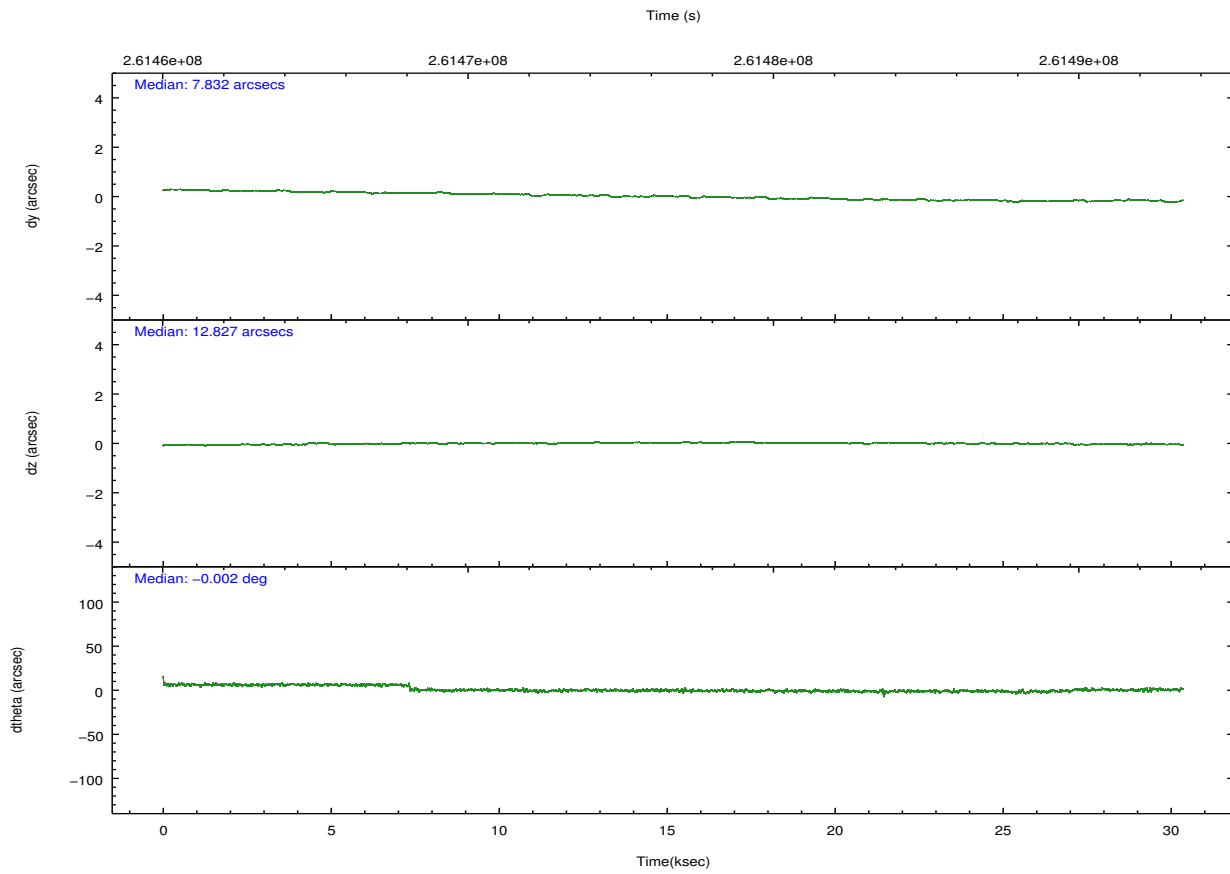
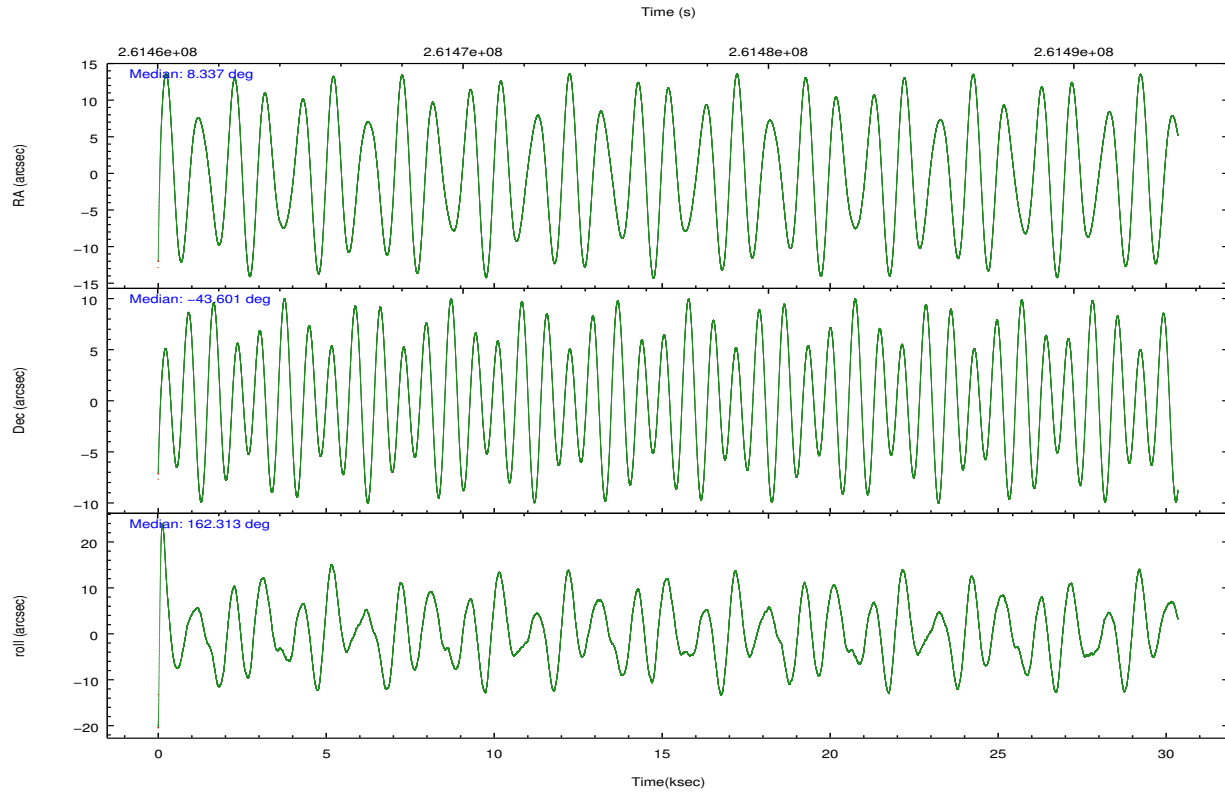
	ccd 0	ccd 1	ccd 2	ccd 3	ccd 6	ccd 7		ccd 0	ccd 1	ccd 2	ccd 3	ccd 6	ccd 7
level 1 events	241268	238788	259551	258081	268576	352999	grade 0 events	13374	12764	13486	13242	11690	12641
rejected events	210073	205984	229130	227531	237694	206920		5%	5%	5%	5%	4%	3%
rejected %	87%	86%	88%	88%	88%	58%	grade 1 events	161	122	172	141	141	370
								0%	0%	0%	0%	0%	0%
							grade 2 events	6570	7300	6420	6104	6725	29038
								2%	3%	2%	2%	2%	8%
							grade 3 events	3093	3177	2796	2920	3005	13018
								1%	1%	1%	1%	1%	3%
							grade 4 events	2888	3102	2838	2986	3011	12656
								1%	1%	1%	1%	1%	3%
							grade 5 events	10278	10986	9823	12017	12130	33759
								4%	4%	3%	4%	4%	9%
							grade 6 events	5275	6466	4887	5302	6456	78737
								2%	2%	1%	2%	2%	22%
							grade 7 events	199629	194871	219129	215369	225418	172780
								82%	81%	84%	83%	83%	48%

2.2 Compared Parameters

Parameter	Planned	Actual	Parameter	Planned	Actual
Instrument	ACIS	ACIS	Obspar format version number	7	7
Detector	ACIS-012367	ACIS-012367	Obspar file type	PREDICTED	ACTUAL
Grating	NONE	NONE	Obspar update status	NONE	UPDATED
Data mode	FAINT	FAINT	Number of optional ACIS chips dropped	0	0
Observation mode	POINTING	POINTING	On-chip summing requested	N	N
[deg] Pointing RA	8.373291	8.336394623277442	Subarray requested	NONE	NONE
[deg] Pointing Dec	-43.594915	-43.60086627693823	Alternating exposures requested	N	N
[deg] Pointing Roll	162.129003	162.3122337962378	[s] Primary exposure time	0.000000	3.2
[mm] SIM focus pos	-0.782348	-0.7809083437167272			
[mm] SIM defocus	0	0.001439871863259334			
[mm] SIM translation stage pos	-233.592463	-233.5874344608287			
[mm] SIM translation stage offset	0	-0.005018542100998502			
[s] Observation start time (MET)	261461887.184000	261460841.85907			
Observation start date	2006-04-15T04:17:02	2006-04-15T04:00:41			
[s] Observation end time (MET)	261491887.184000	261492860.29806			
Observation end date	2006-04-15T12:37:02	2006-04-15T12:54:20			
Read mode	TIMED	TIMED			

2.3 Aspect



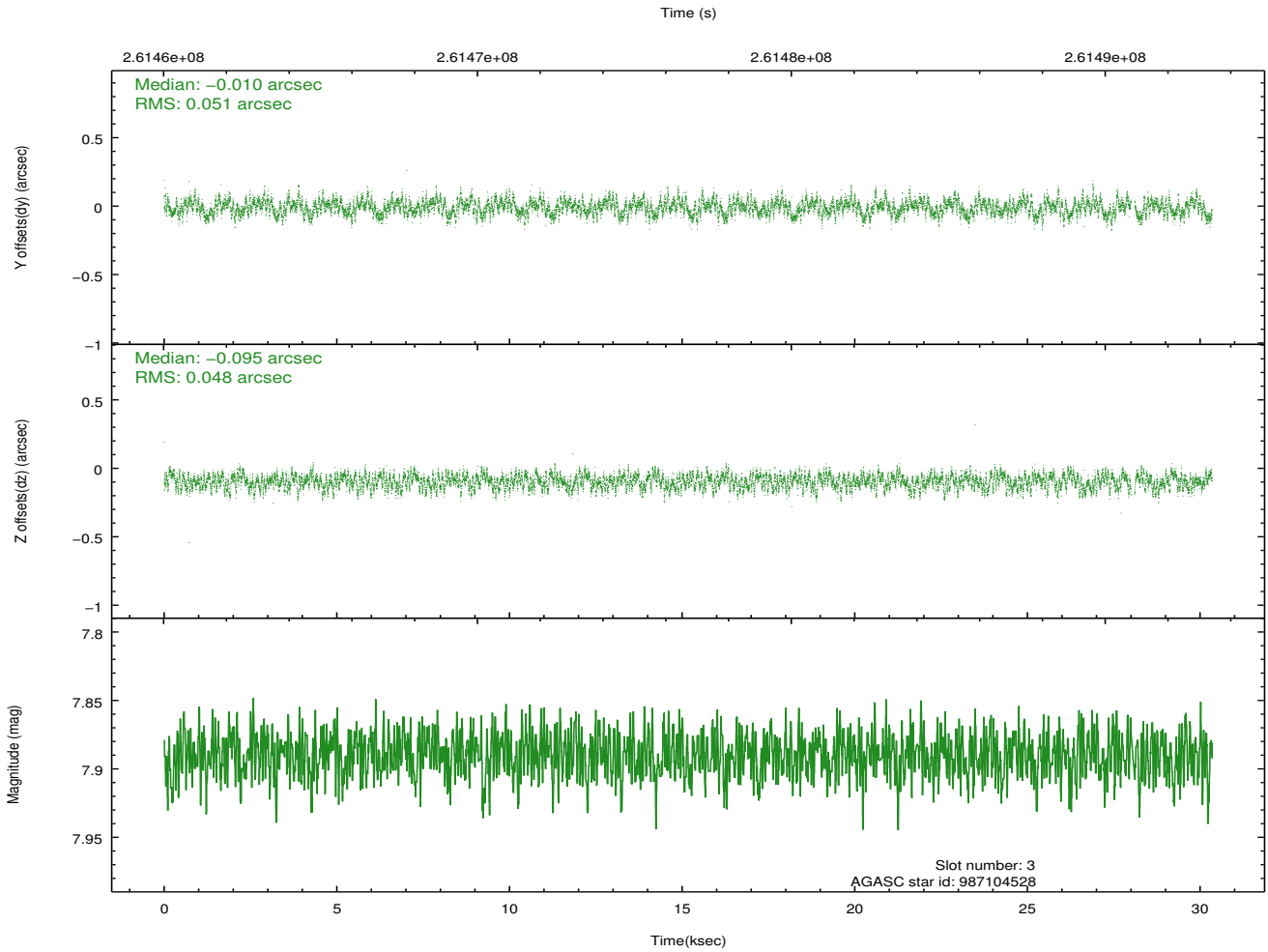
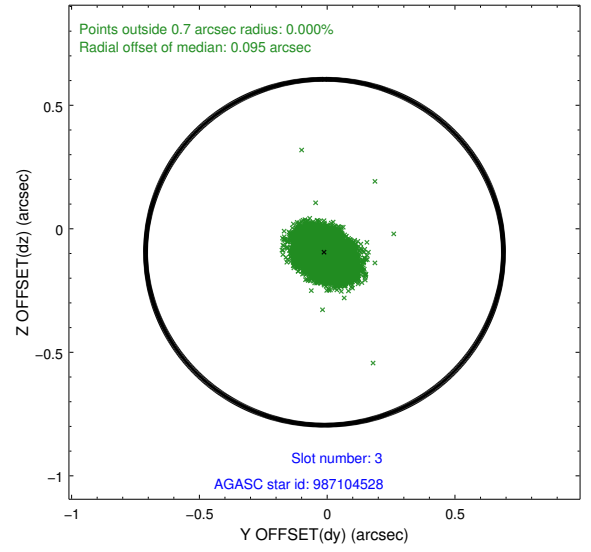
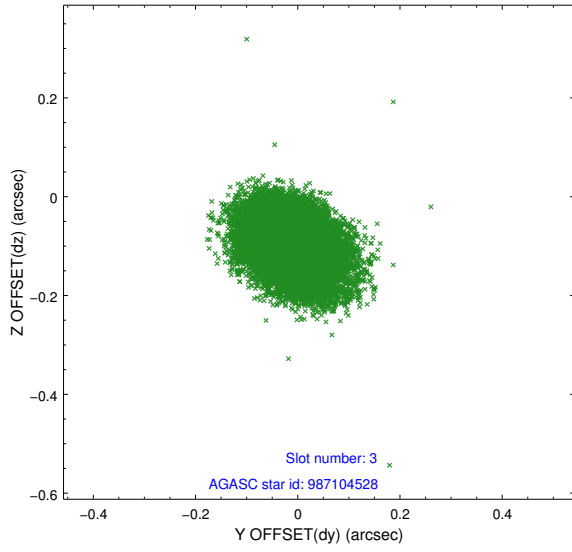


Slot Statistics

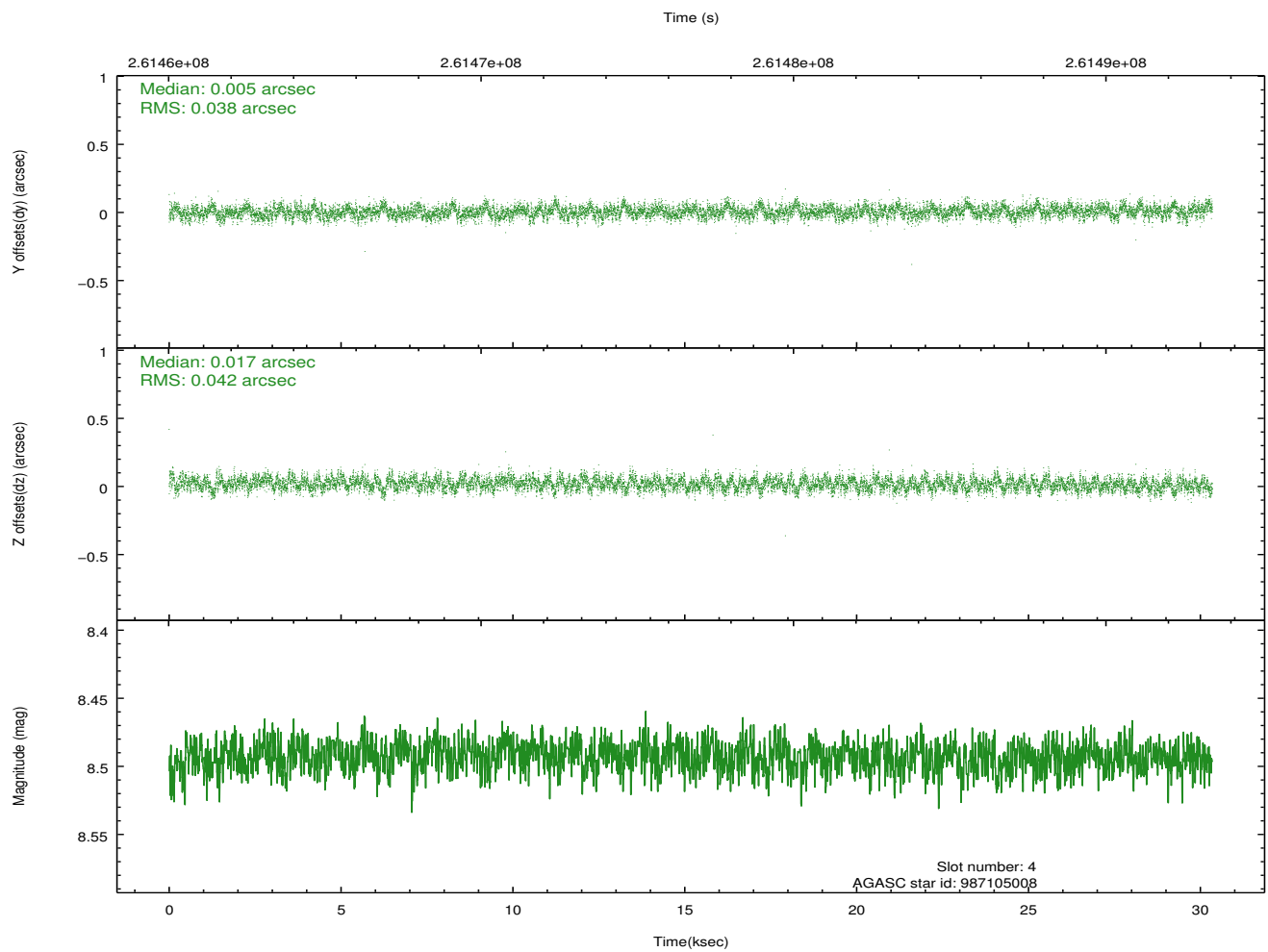
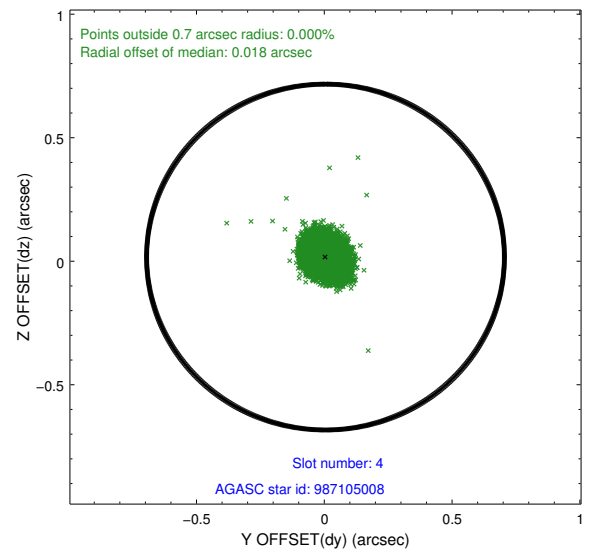
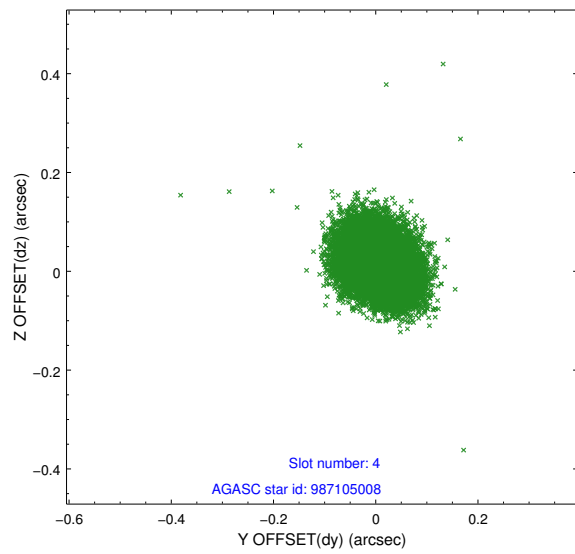
slot	status	id	mag	n_pts	med_dy	med_dz	dr1	dr2	ra	dec	mean_y	mean_z
0	FID	ACIS-I-1	7.24	7404	-0.064	0.014	0.016	0.040	0.000000	0.000000	931.75	-836.35
1	FID	ACIS-I-2	7.14	7400	-0.160	-0.082	0.012	0.028	0.000000	0.000000	-762.40	-842.92
2	FID	ACIS-I-4	7.17	7404	0.125	0.133	0.018	0.028	0.000000	0.000000	2151.80	1063.52
3	GUIDE	987104528	7.89	14749	-0.010	-0.095	0.076	0.119	7.827041	-43.606390	1341.32	480.96
4	GUIDE	987105008	8.49	14800	0.005	0.017	0.060	0.096	8.512368	-44.078521	-876.39	1547.24
5	GUIDE	987105472	8.92	14788	0.155	0.071	0.082	0.132	9.076108	-43.240154	-1363.83	-1772.84
6	GUIDE	987105504	8.51	14801	-0.145	0.086	0.067	0.107	7.758108	-43.292185	1866.77	-536.69
7	GUIDE	987104504	9.30	14730	-0.001	-0.076	0.092	0.152	7.470320	-44.083076	1678.87	2401.61

2.4 Star Slots

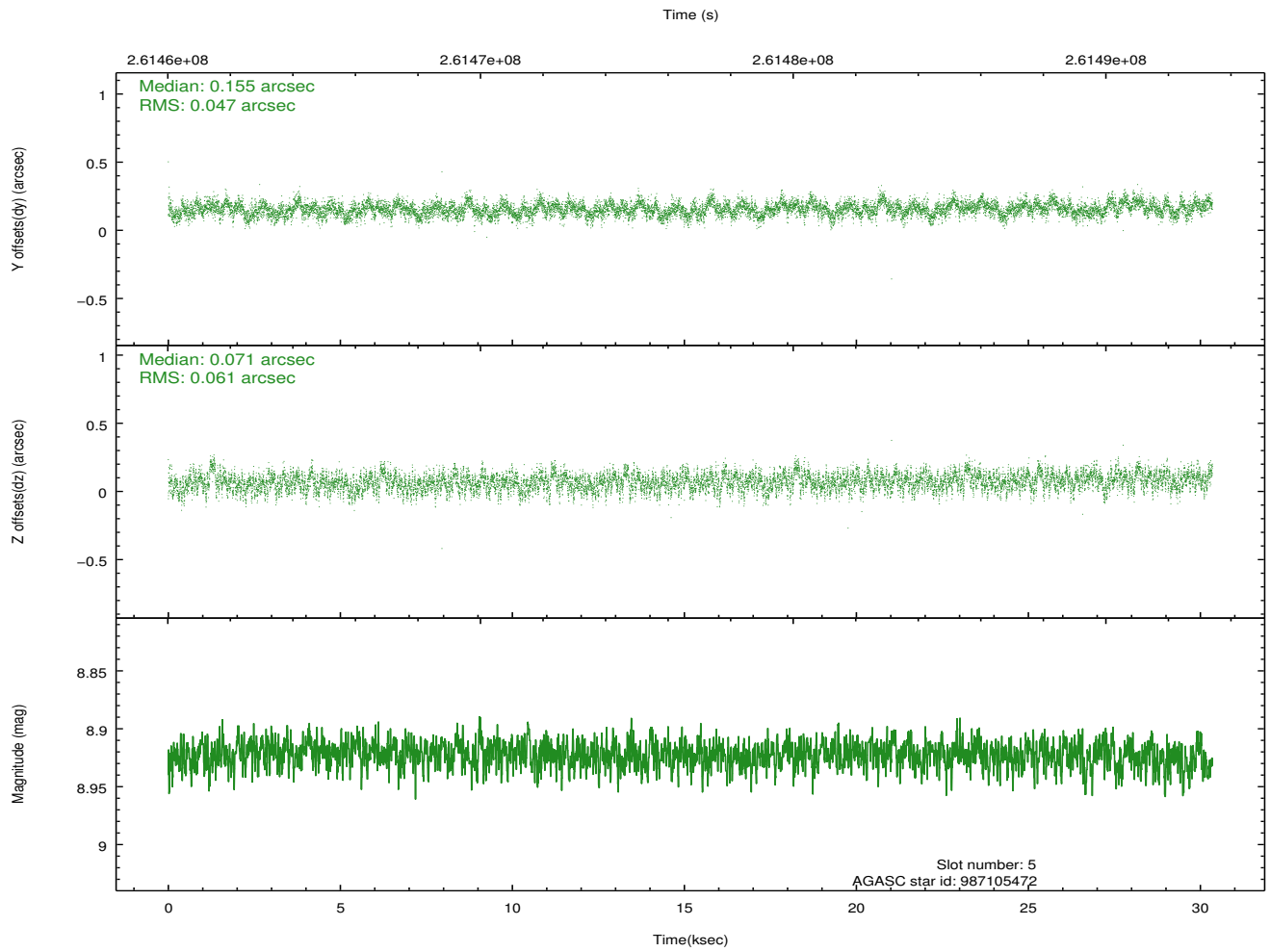
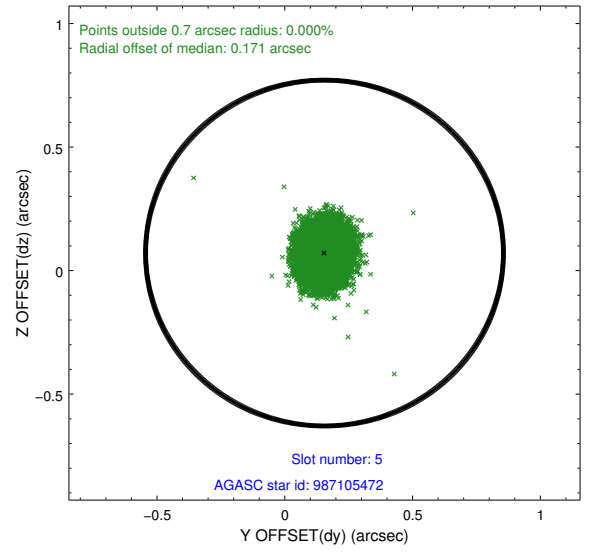
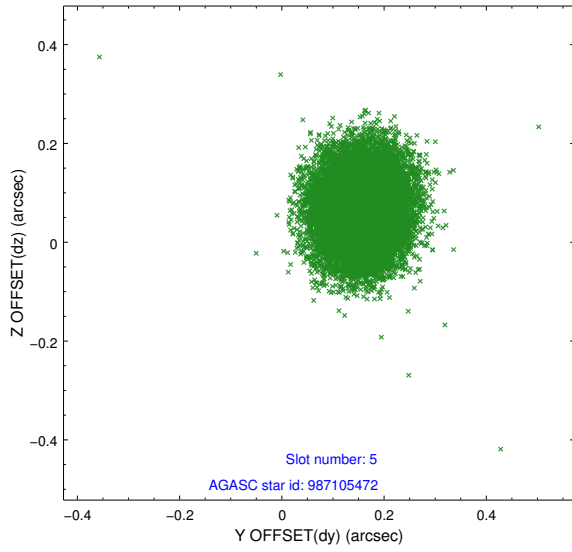
2.4.1 Slot 3



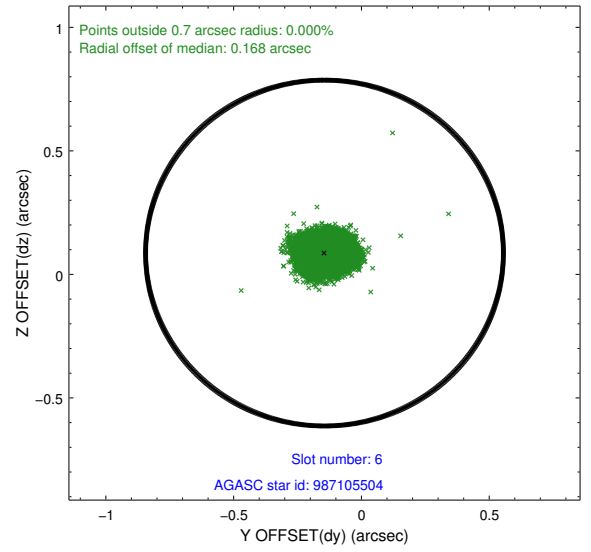
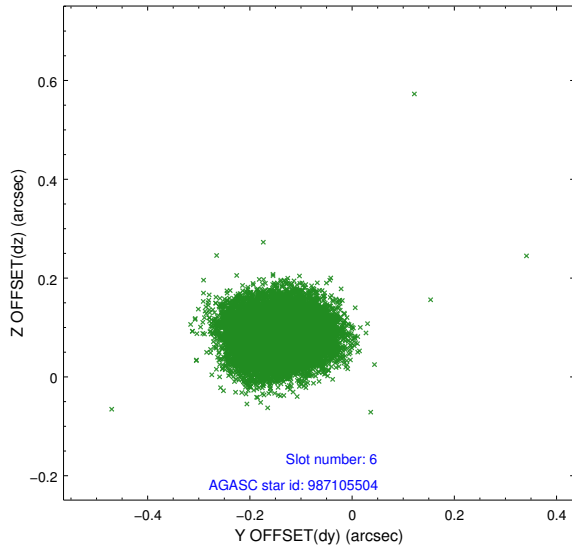
2.4.2 Slot 4



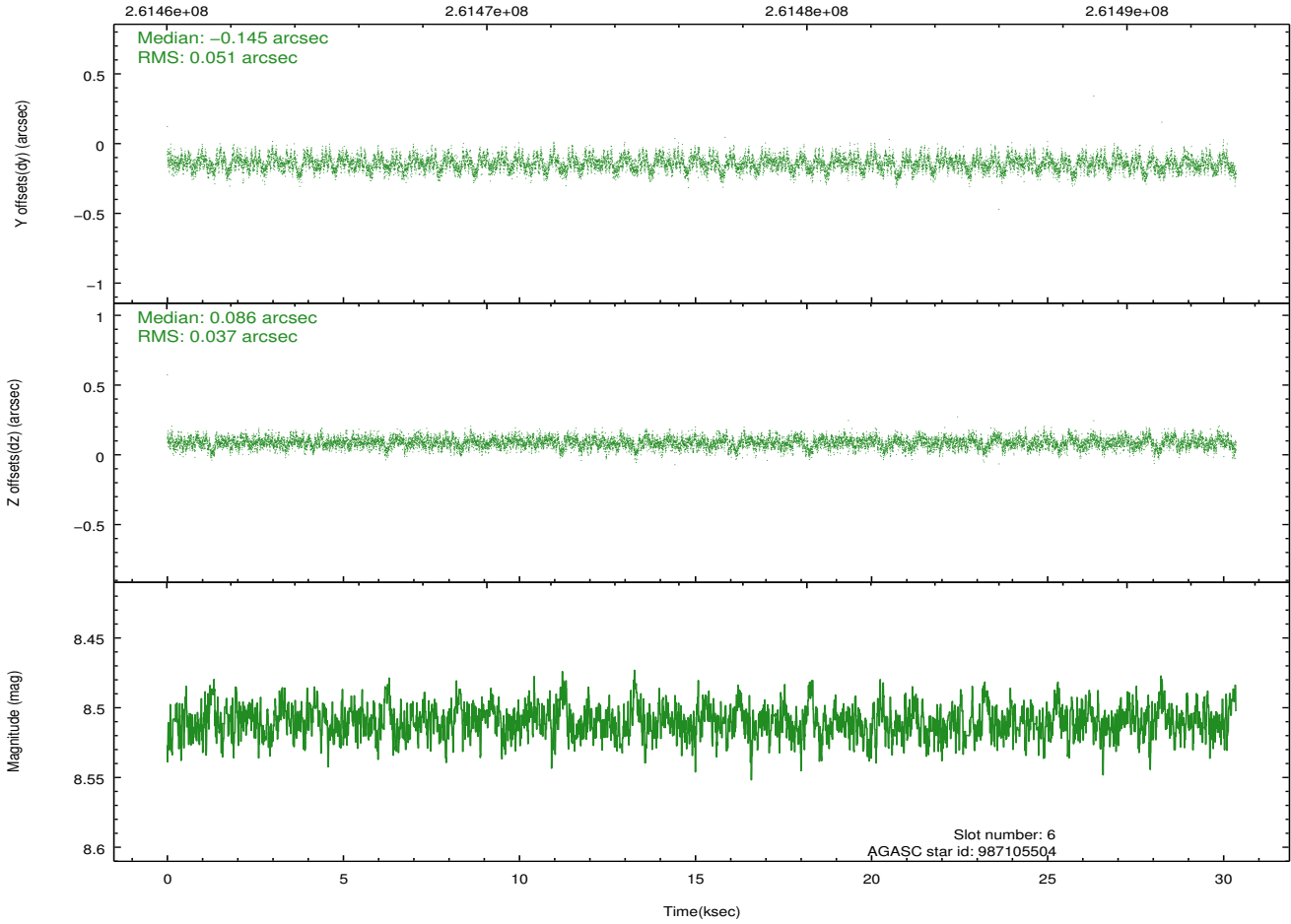
2.4.3 Slot 5



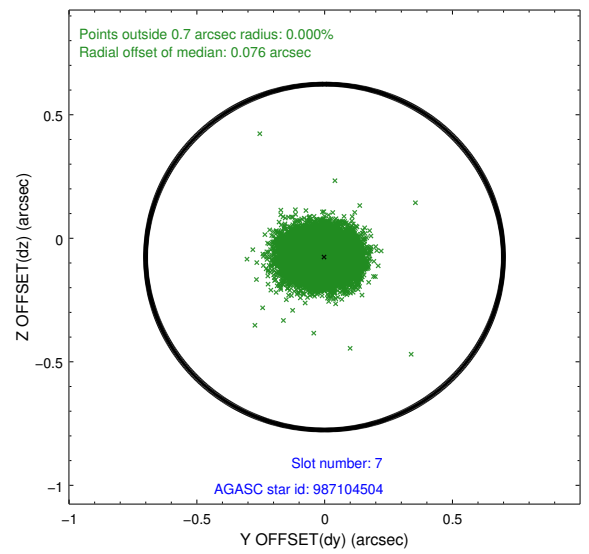
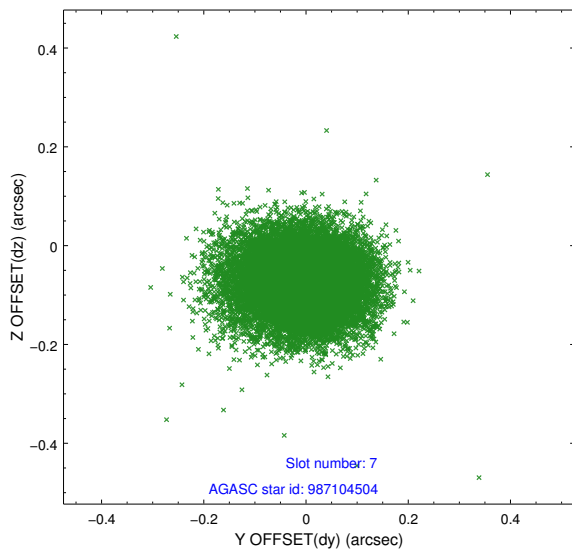
2.4.4 Slot 6



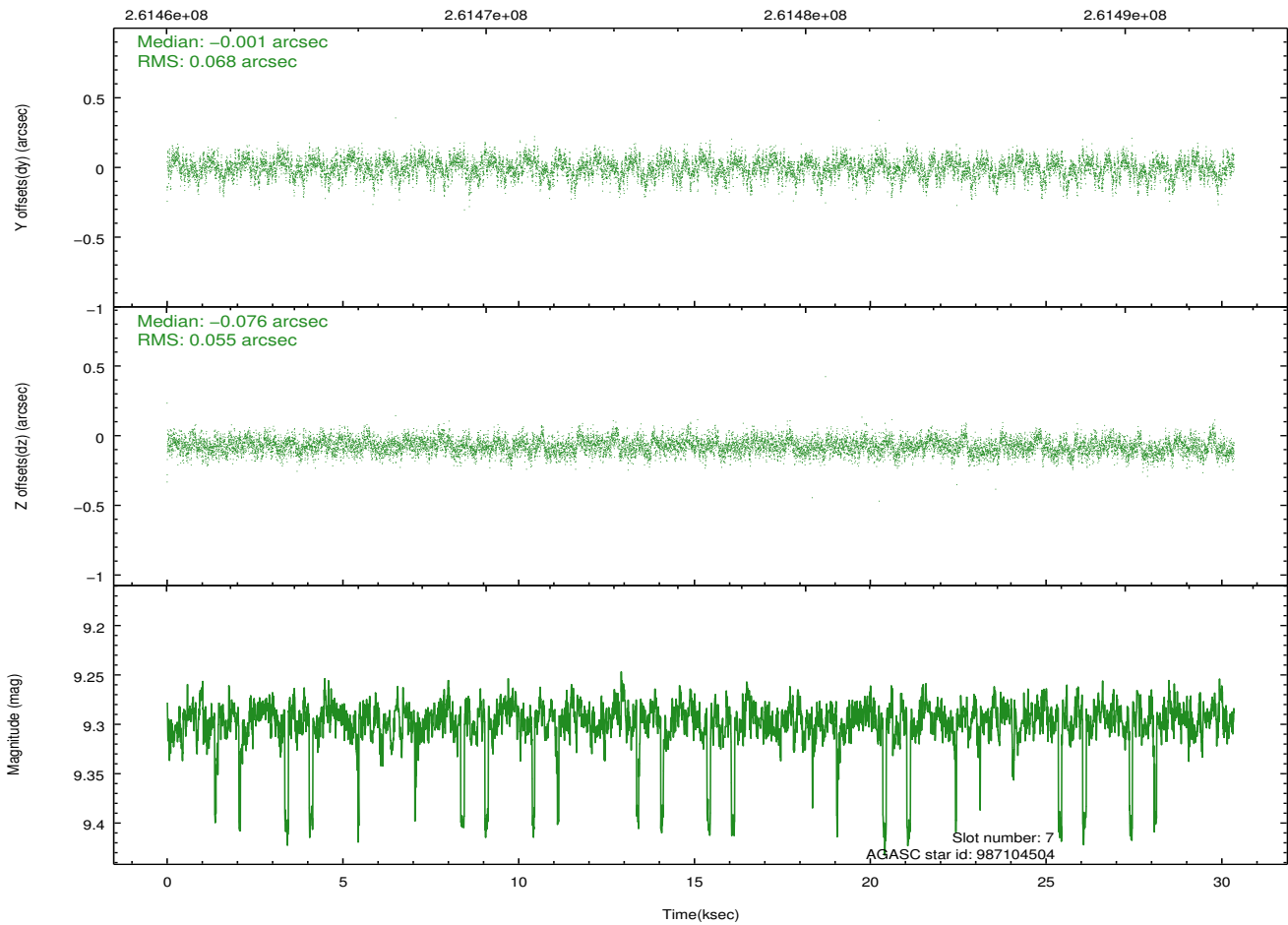
Time (s)



2.4.5 Slot 7

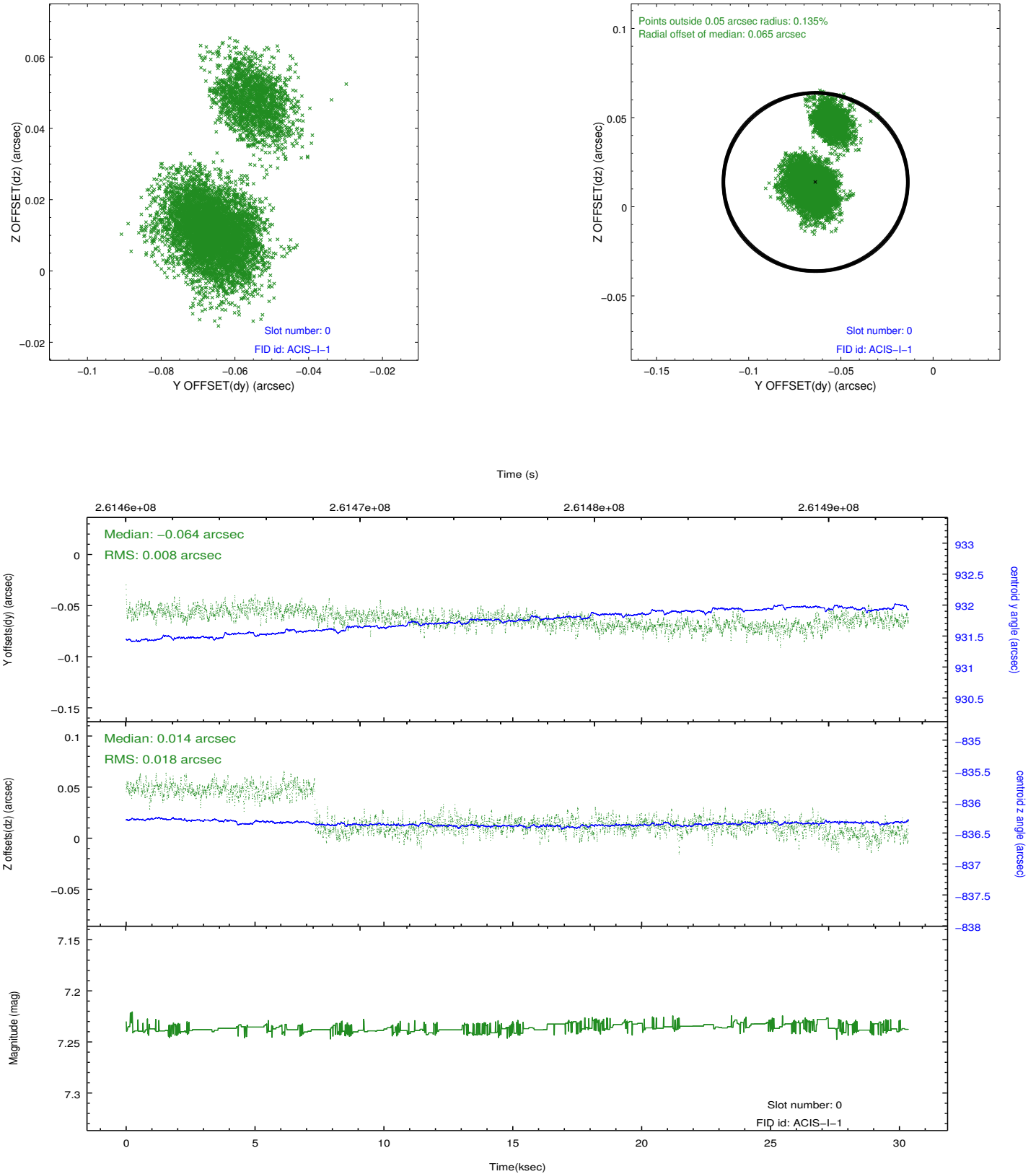


Time (s)

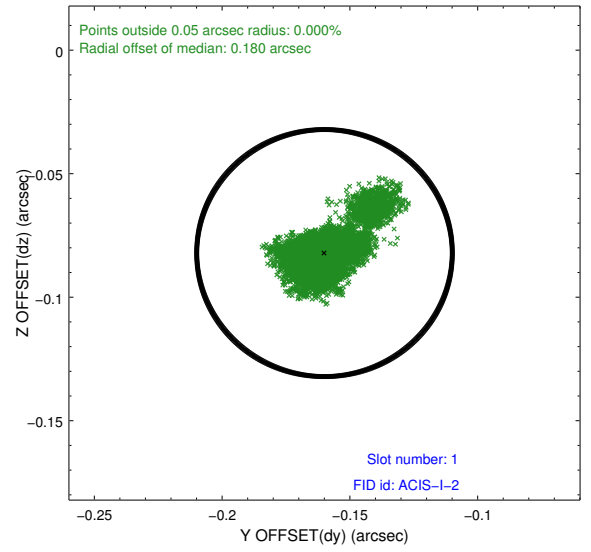
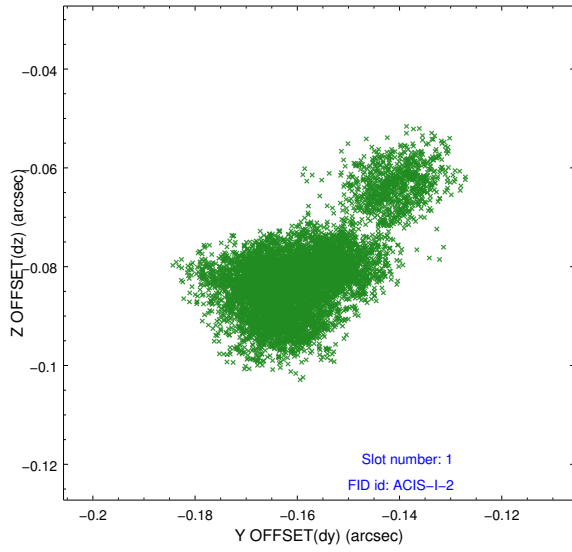


2.5 FID Slots

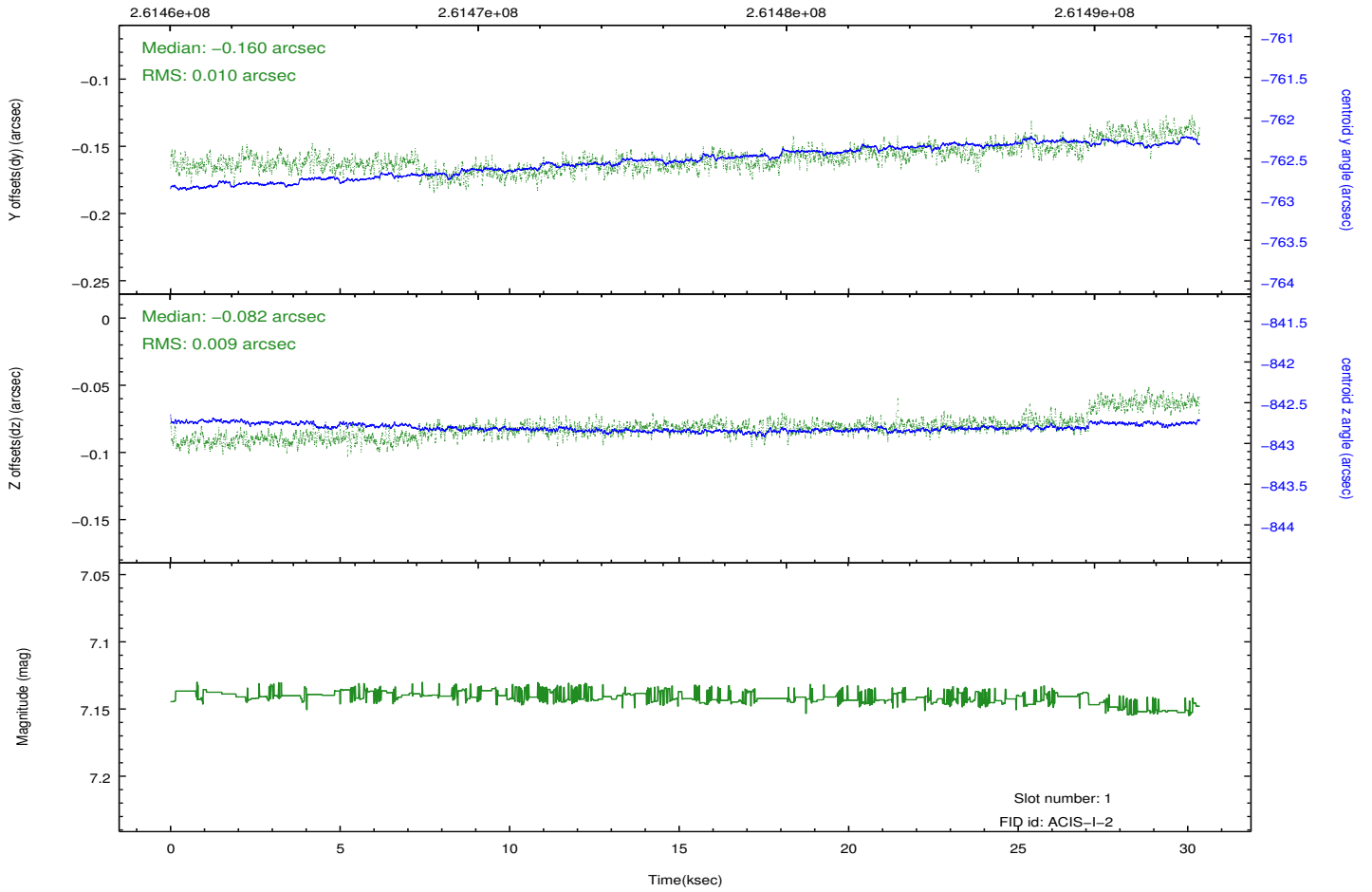
2.5.1 Slot 0



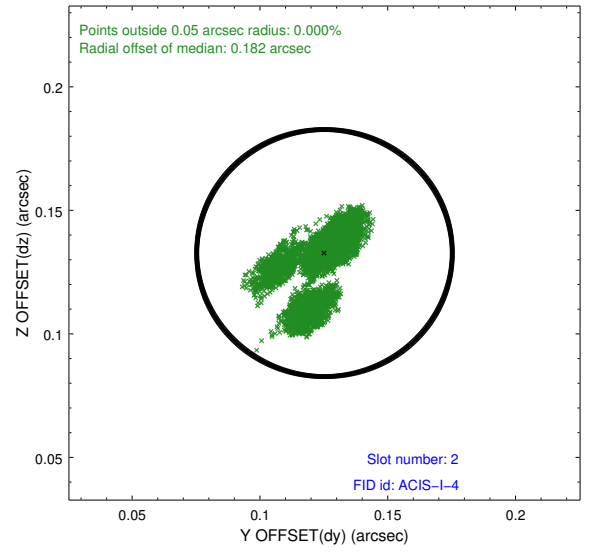
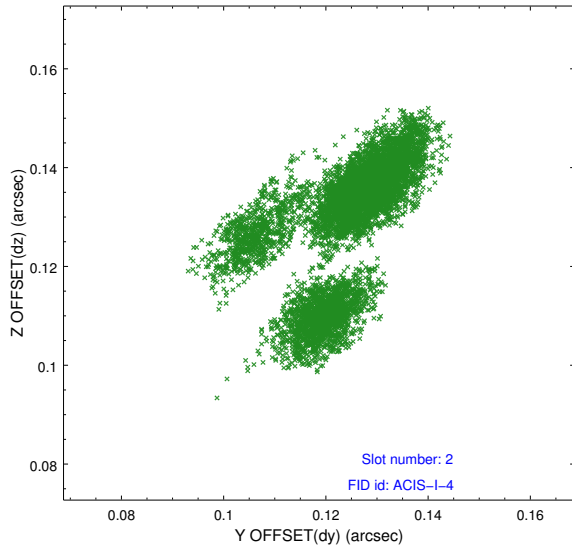
2.5.2 Slot 1



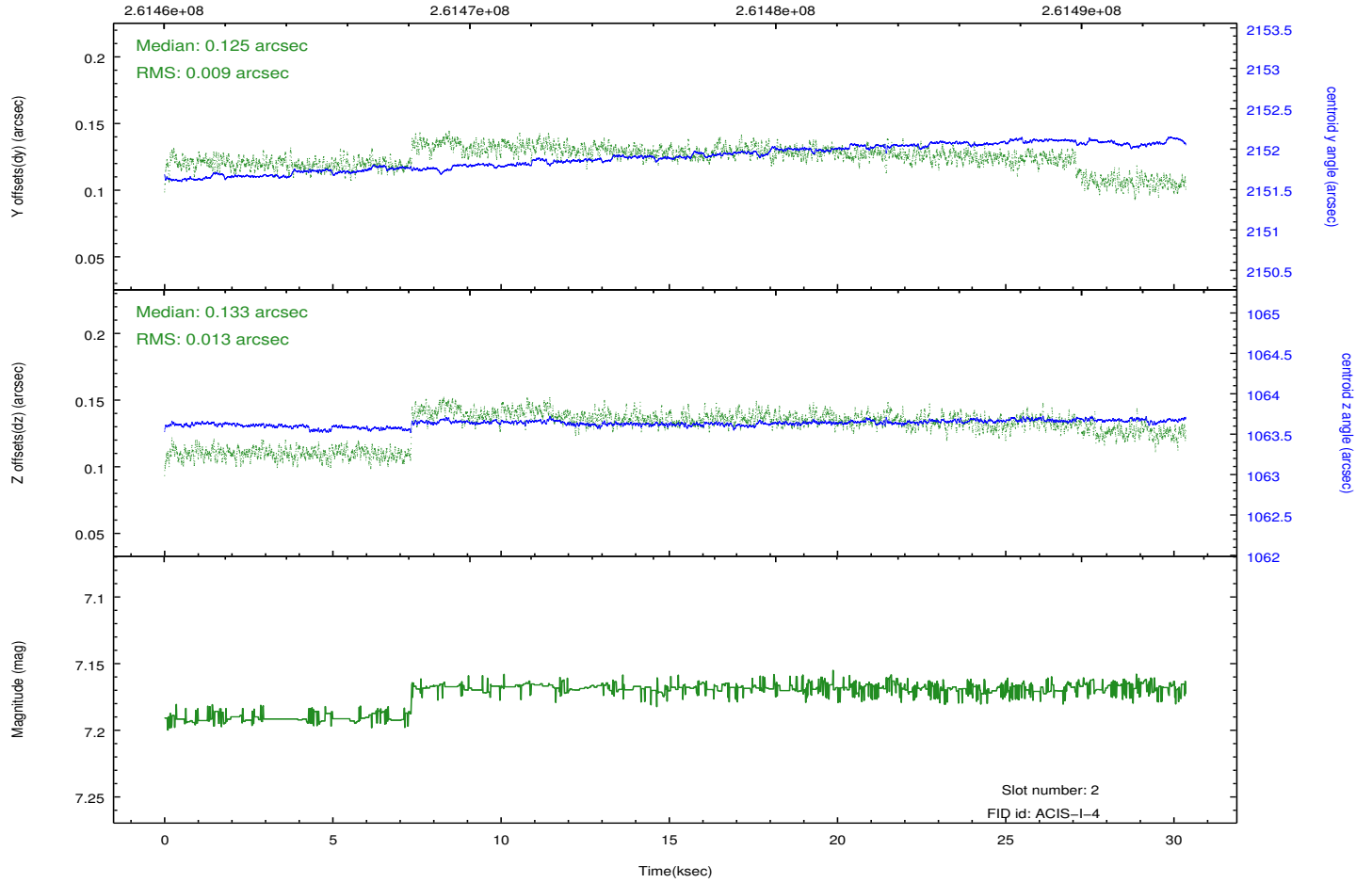
Time (s)



2.5.3 Slot 2



Time (s)



A Summary

A.1 Status

V&V Scientist	Jen Lauer
V&V Date (YYYY-MM-DD)	2012.04.02
V&V Edition	1
V&V Disposition and Status	OK
V&V Charge Time	29.9487179

A.2 Comments