

V&V Reference Report

L2 ASCDS Version : 8.4.3

Observation 7230 - L2 Version 2
Chandra X-Ray Center

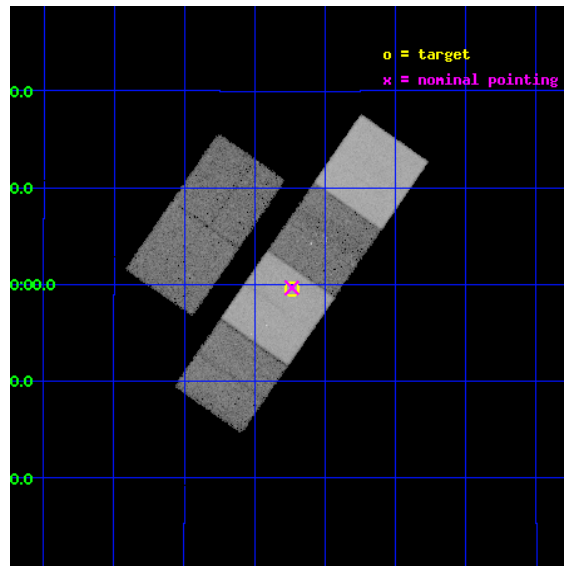
L2 Processing Date : Apr 2 2012

Contents

1	Front	2
2	OBI	3
2.1	OBI	3
2.1.1	Images	3
2.1.2	Bias	3
2.1.3	Parameters	4
2.1.4	Events	4
2.2	Compared Parameters	5
2.3	Aspect	6
2.4	Star Slots	9
2.4.1	Slot 3	9
2.4.2	Slot 4	10
2.4.3	Slot 5	11
2.4.4	Slot 6	12
2.4.5	Slot 7	13
2.5	FID Slots	14
2.5.1	Slot 0	14
2.5.2	Slot 1	15
2.5.3	Slot 2	16
A	Summary	17
A.1	Status	17
A.2	Comments	17

1 Front

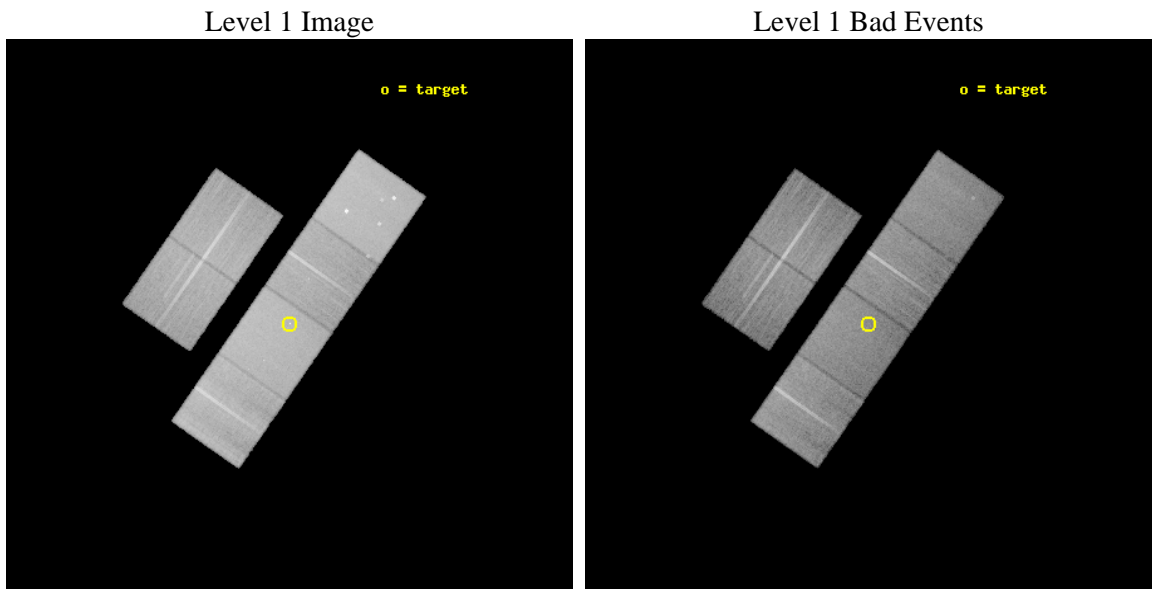
seq_num	500611	Sequence number
obs_id	7230	Observation id
title	The old pulsar B1929+10 and its surroundings	Proposal title
observer	Professor Gordon Garmire	Principal investigator
object	PSR B1929+10	Source name
dtycycle	0	
cycle	P	events from which exps? Prim/Second/Both
ra_targ	293.058096	Observer's specified target RA [deg]
dec_targ	10.992417	Observer's specified target Dec [deg]
ra_nom	293.05877851288	Nominal RA [deg]
dec_nom	10.994364411106	Nominal Dec [deg]
roll_nom	124.82392839287	Nominal Roll [deg]
revision	2	Processing version of data
ontime	24950.399907053	Sum of GTIs [s]
livetime	24634.462920102	Livetime [s]
ontime2	24947.158926785	Sum of GTIs [s]
ontime3	24950.399907053	Sum of GTIs [s]
ontime5	24950.399907053	Sum of GTIs [s]
ontime6	24943.91792658	Sum of GTIs [s]
ontime7	24950.399907053	Sum of GTIs [s]
ontime8	24950.399907053	Sum of GTIs [s]
l2events	368027	Number of level 2 events



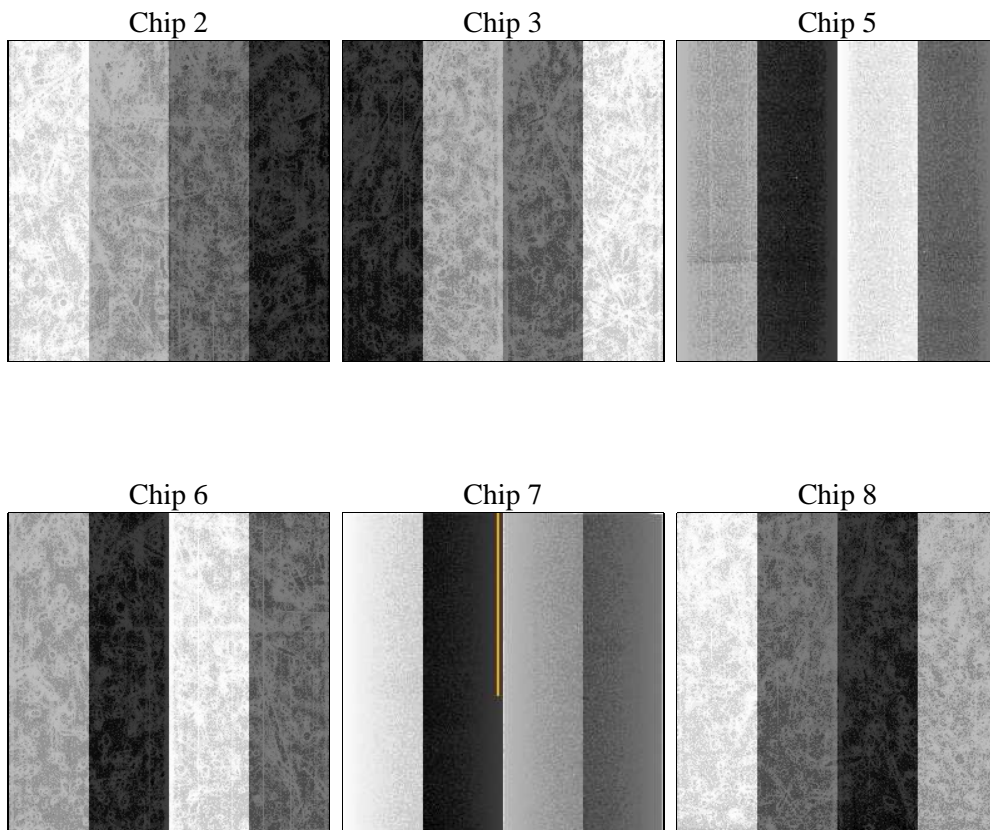
2 OBI

2.1 OBI

2.1.1 Images



2.1.2 Bias



2.1.3 Parameters

obi_num	0	Obi number	sched_exp_time	24999.681000	[s] Scheduled observation exposure time
ascdsver	8.4.3	Processing system revision	ontime	24950.399907053	Sum of GTIs [s]
caldbver	4.4.9	 	ontime2	24947.158926785	Sum of GTIs [s]
date	2012-04-02T04:13:04	Date and time of file creation	ontime3	24950.399907053	Sum of GTIs [s]
revision	2	Processing version of data	ontime5	24950.399907053	Sum of GTIs [s]
			ontime6	24943.91792658	Sum of GTIs [s]
			ontime7	24950.399907053	Sum of GTIs [s]
			ontime8	24950.399907053	Sum of GTIs [s]
			l1events	1609249	Number of level 1 events

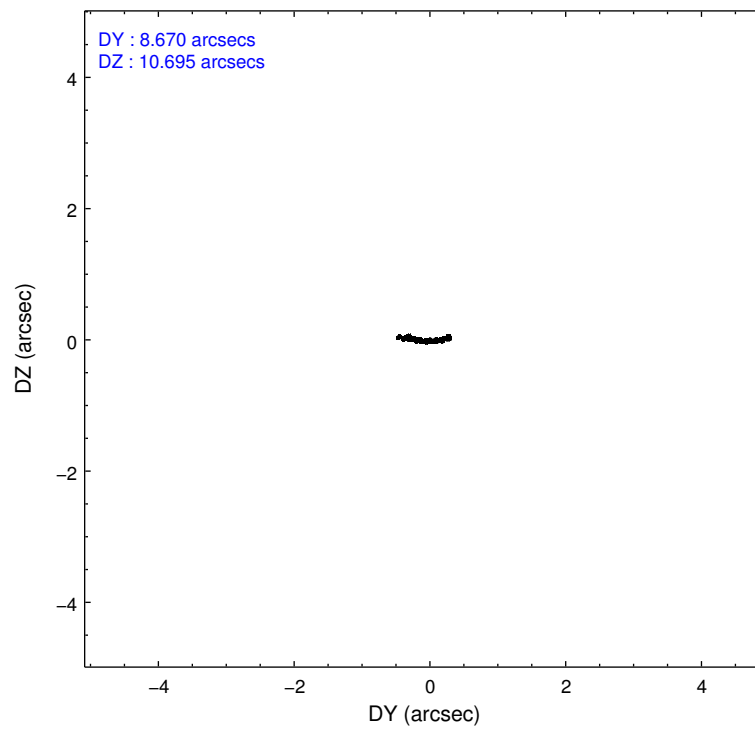
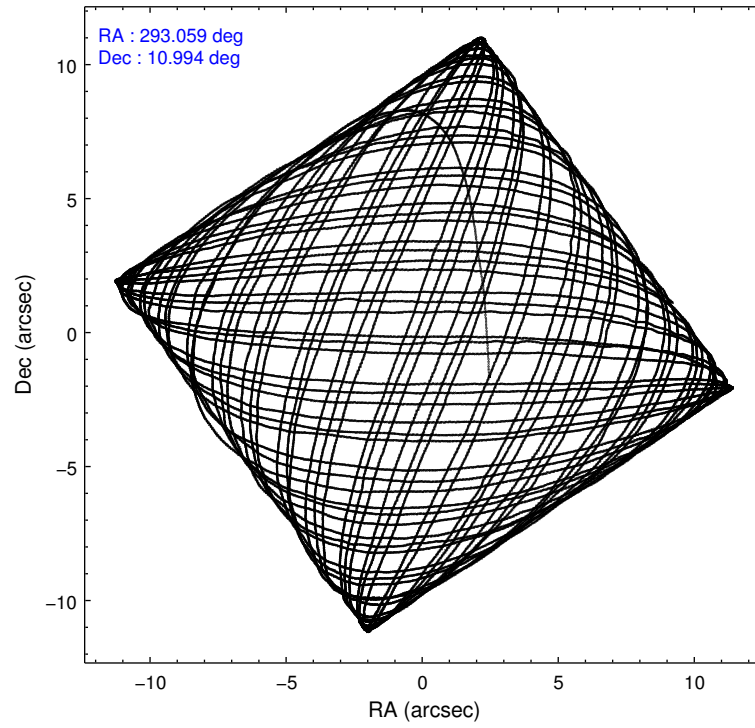
2.1.4 Events

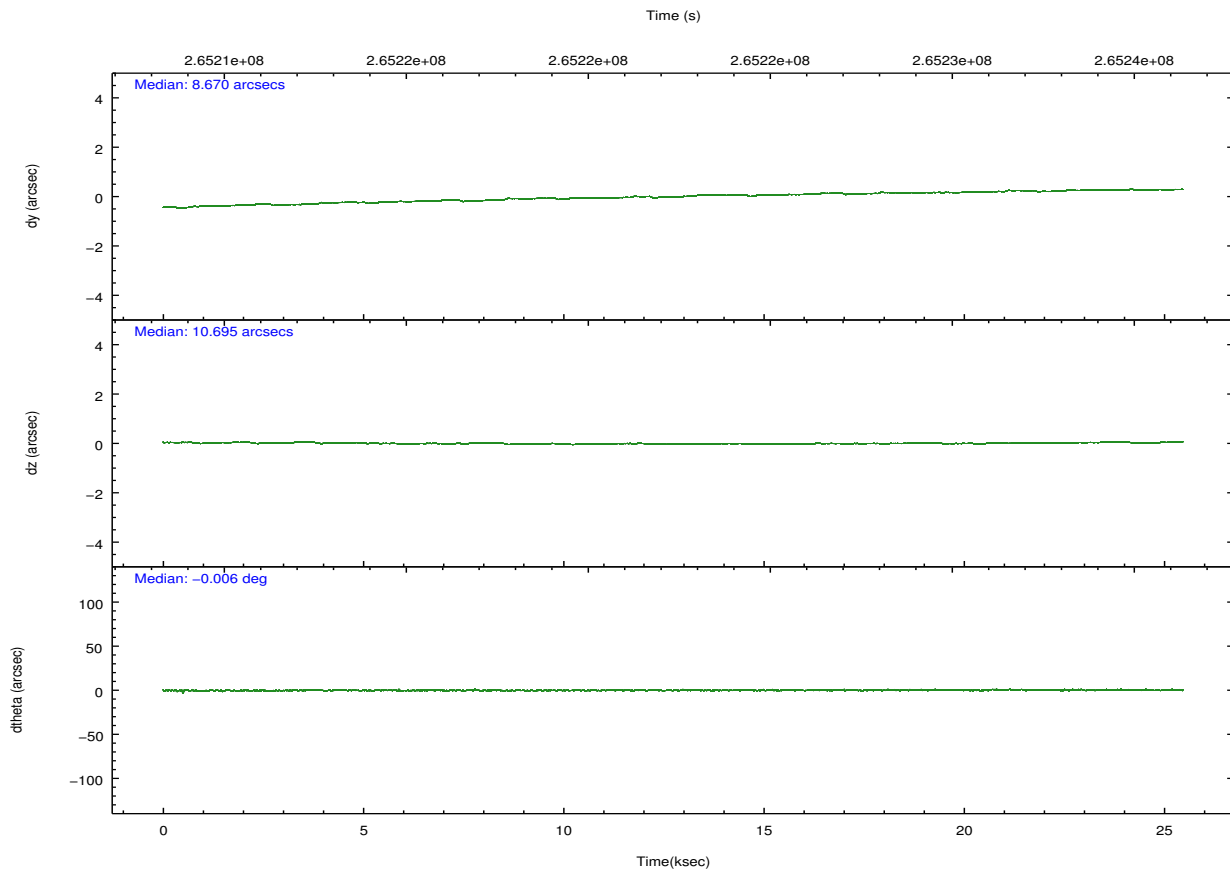
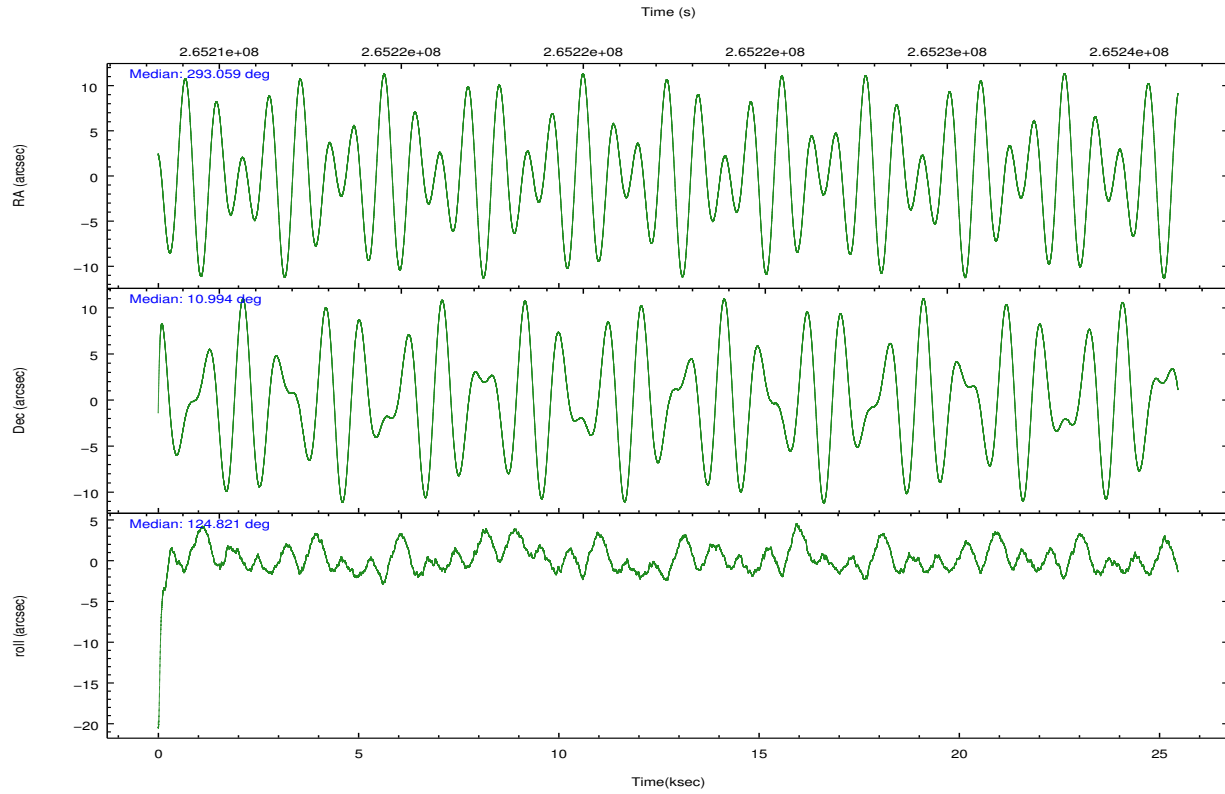
	ccd 2	ccd 3	ccd 5	ccd 6	ccd 7	ccd 8		ccd 2	ccd 3	ccd 5	ccd 6	ccd 7	ccd 8
level 1 events	233590	213591	343010	225270	308359	285429	grade 0 events	11523	11419	18443	10878	11576	19706
rejected events	207458	187551	183791	198192	179839	222242		4%	5%	5%	4%	3%	6%
rejected %	88%	87%	53%	87%	58%	77%	grade 1 events	144	122	912	134	304	206
								0%	0%	0%	0%	0%	0%
							grade 2 events	5467	5057	46673	5771	25992	14007
								2%	2%	13%	2%	8%	4%
							grade 3 events	2380	2563	5827	2542	11287	6577
								1%	1%	1%	1%	3%	2%
							grade 4 events	2451	2520	5744	2450	11048	6223
								1%	1%	1%	1%	3%	2%
							grade 5 events	8735	10112	24493	10413	29258	13583
								3%	4%	7%	4%	9%	4%
							grade 6 events	4312	4487	82548	5439	68634	16675
								1%	2%	24%	2%	22%	5%
							grade 7 events	198578	177311	158370	187643	150260	208452
								85%	83%	46%	83%	48%	73%

2.2 Compared Parameters

Parameter	Planned	Actual	Parameter	Planned	Actual
Instrument	ACIS	ACIS	Obspar format version number	7	7
Detector	ACIS-235678	ACIS-235678	Obspar file type	PREDICTED	ACTUAL
Grating	NONE	NONE	Obspar update status	NONE	UPDATED
Data mode	VFAINT	VFAINT	Number of optional ACIS chips dropped	0	0
Observation mode	POINTING	POINTING	On-chip summing requested	N	N
[deg] Pointing RA	293.084069	293.0587785128813	Subarray requested	NONE	NONE
[deg] Pointing Dec	10.983094	10.99436441110608	Alternating exposures requested	N	N
[deg] Pointing Roll	124.662484	124.8239283928737	[s] Primary exposure time	0.000000	3.2
[mm] SIM focus pos	-0.684267	-0.6828225247311905			
[mm] SIM defocus	0	0.001444936568705701			
[mm] SIM translation stage pos	-190.132523	-190.1425803651734			
[mm] SIM translation stage offset	0	0.01005778216563158			
[s] Observation start time (MET)	265210060.184000	265208959.5339			
Observation start date	2006-05-28T13:26:35	2006-05-28T13:09:19			
[s] Observation end time (MET)	265235059.184000	265235282.04763			
Observation end date	2006-05-28T20:23:14	2006-05-28T20:28:02			
Read mode	TIMED	TIMED			

2.3 Aspect



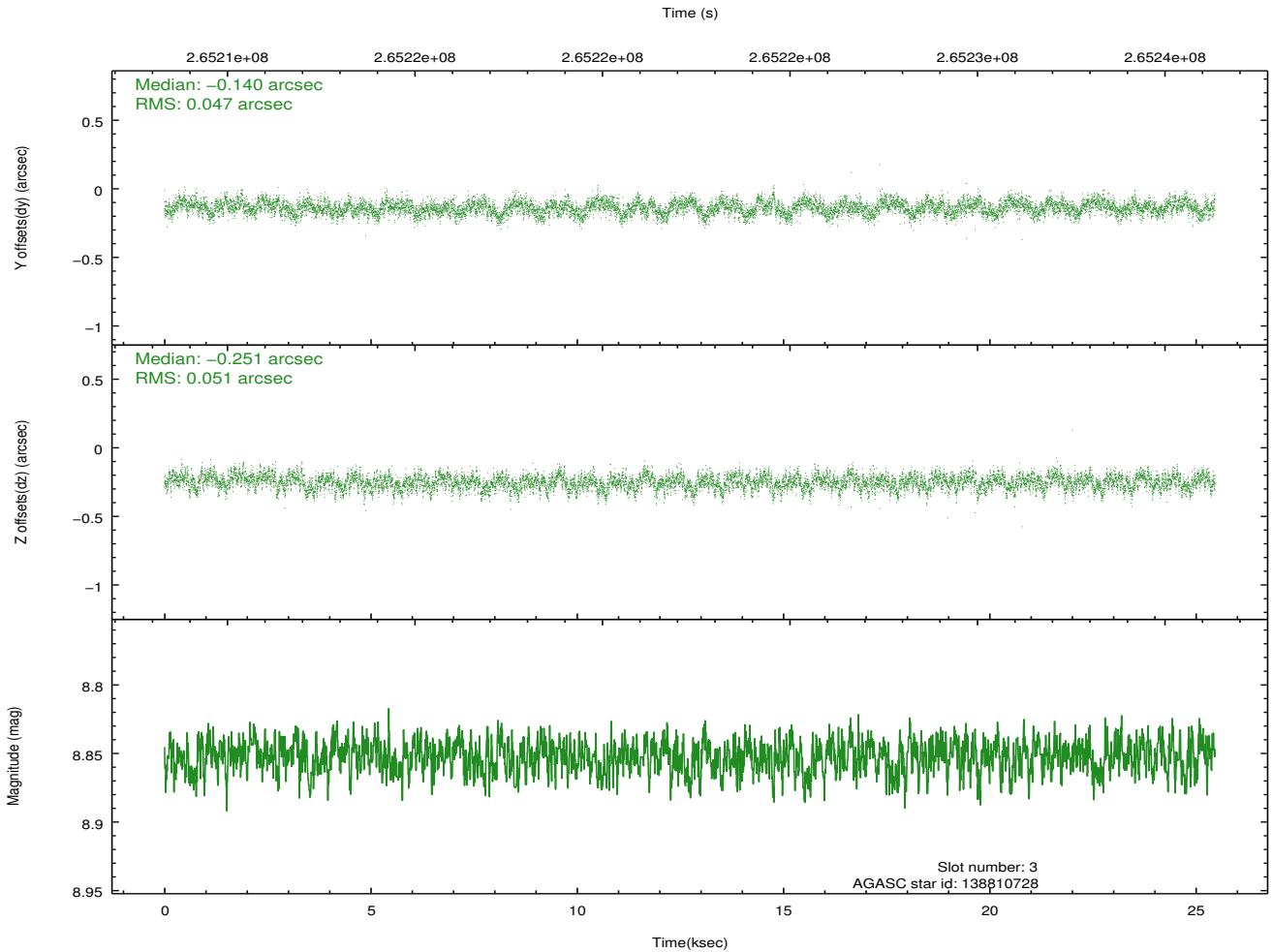
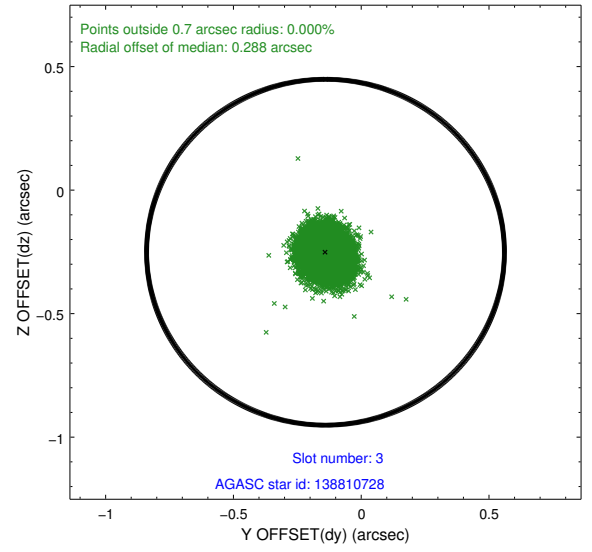
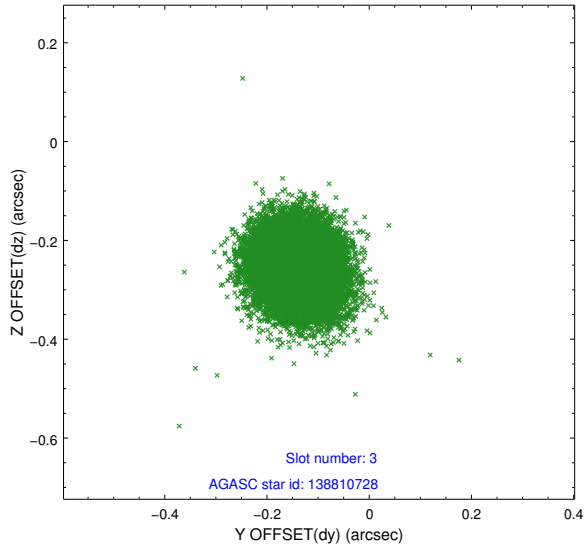


Slot Statistics

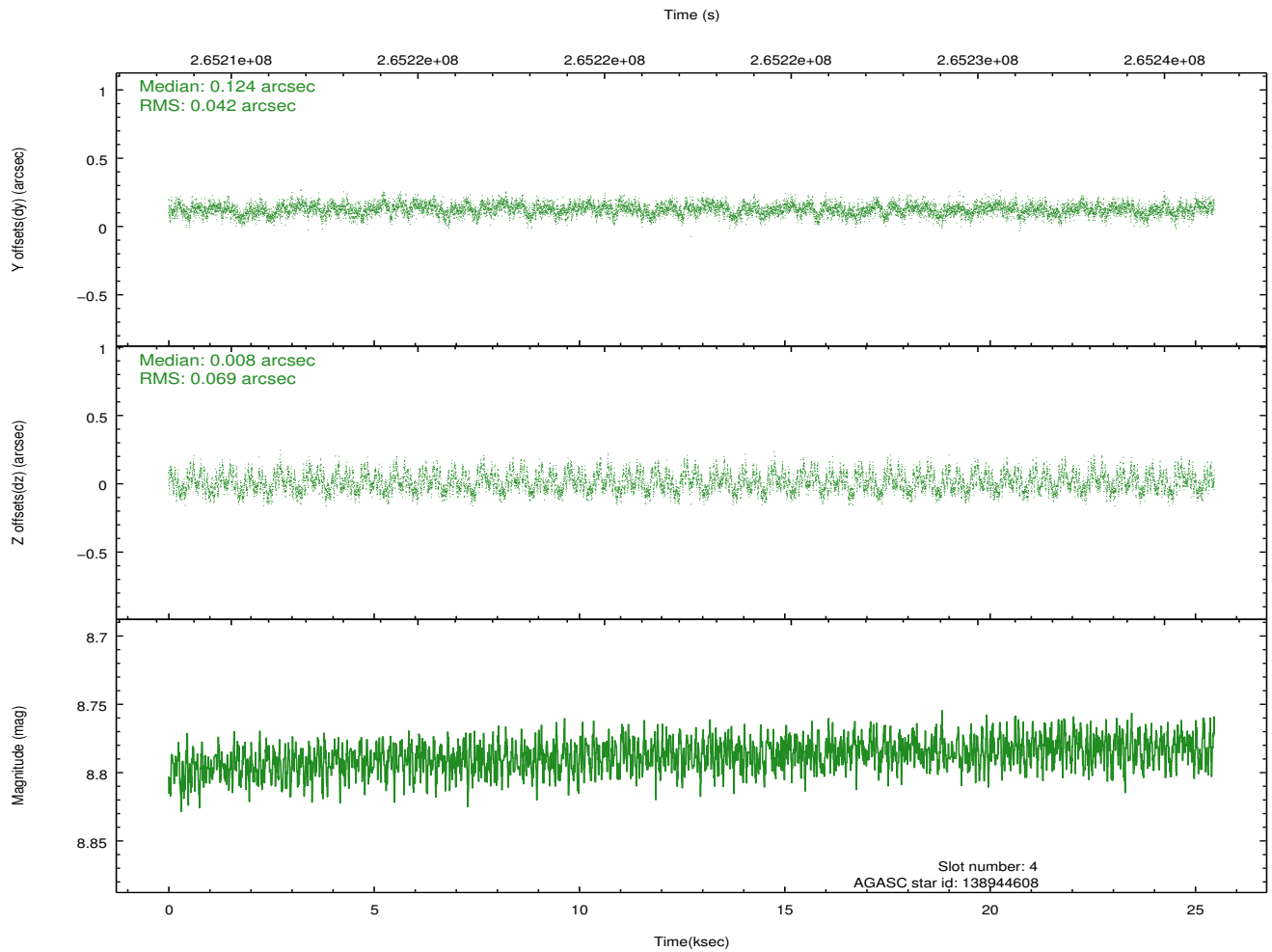
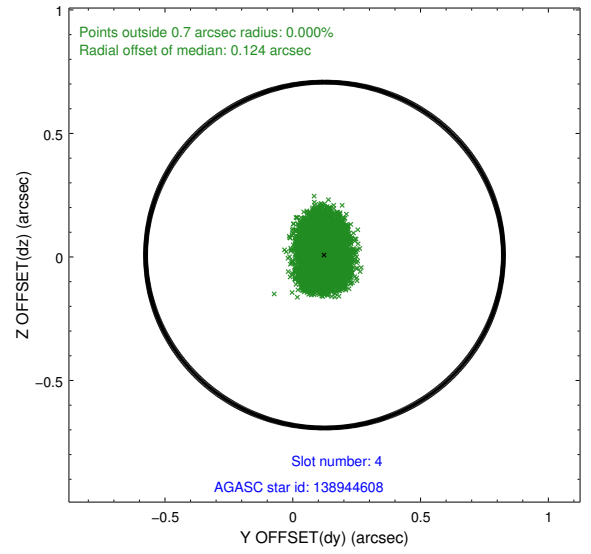
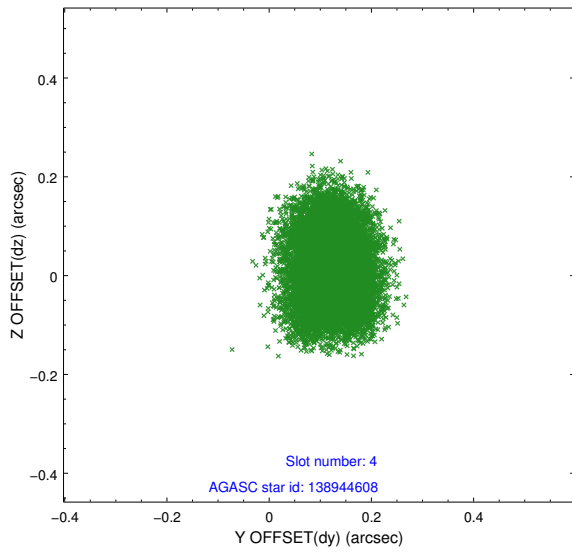
slot	status	id	mag	n_pts	med_dy	med_dz	dr1	dr2	ra	dec	mean_y	mean_z
0	FID	ACIS-S-1	7.19	6210	0.016	-0.064	0.008	0.016	0.000000	0.000000	934.61	-1727.60
1	FID	ACIS-S-4	7.21	6211	0.119	0.041	0.012	0.020	0.000000	0.000000	2152.17	176.56
2	FID	ACIS-S-5	7.23	6210	-0.163	0.035	0.012	0.021	0.000000	0.000000	-1814.31	170.24
3	GUIDE	138810728	8.85	12418	-0.140	-0.251	0.074	0.118	292.568685	11.088559	1349.06	1280.54
4	GUIDE	138944608	8.79	12420	0.124	0.008	0.087	0.138	293.762373	10.804438	-1890.49	-1608.43
5	GUIDE	138950688	9.09	12412	0.147	0.076	0.087	0.137	293.611858	10.712739	-1860.74	-982.91
6	GUIDE	139493368	9.40	12333	-0.108	0.169	0.094	0.152	293.318849	11.608954	1382.68	-1962.26
7	GUIDE	138954992	6.97	12421	-0.020	-0.001	0.050	0.078	293.660265	10.952713	-1246.24	-1614.00

2.4 Star Slots

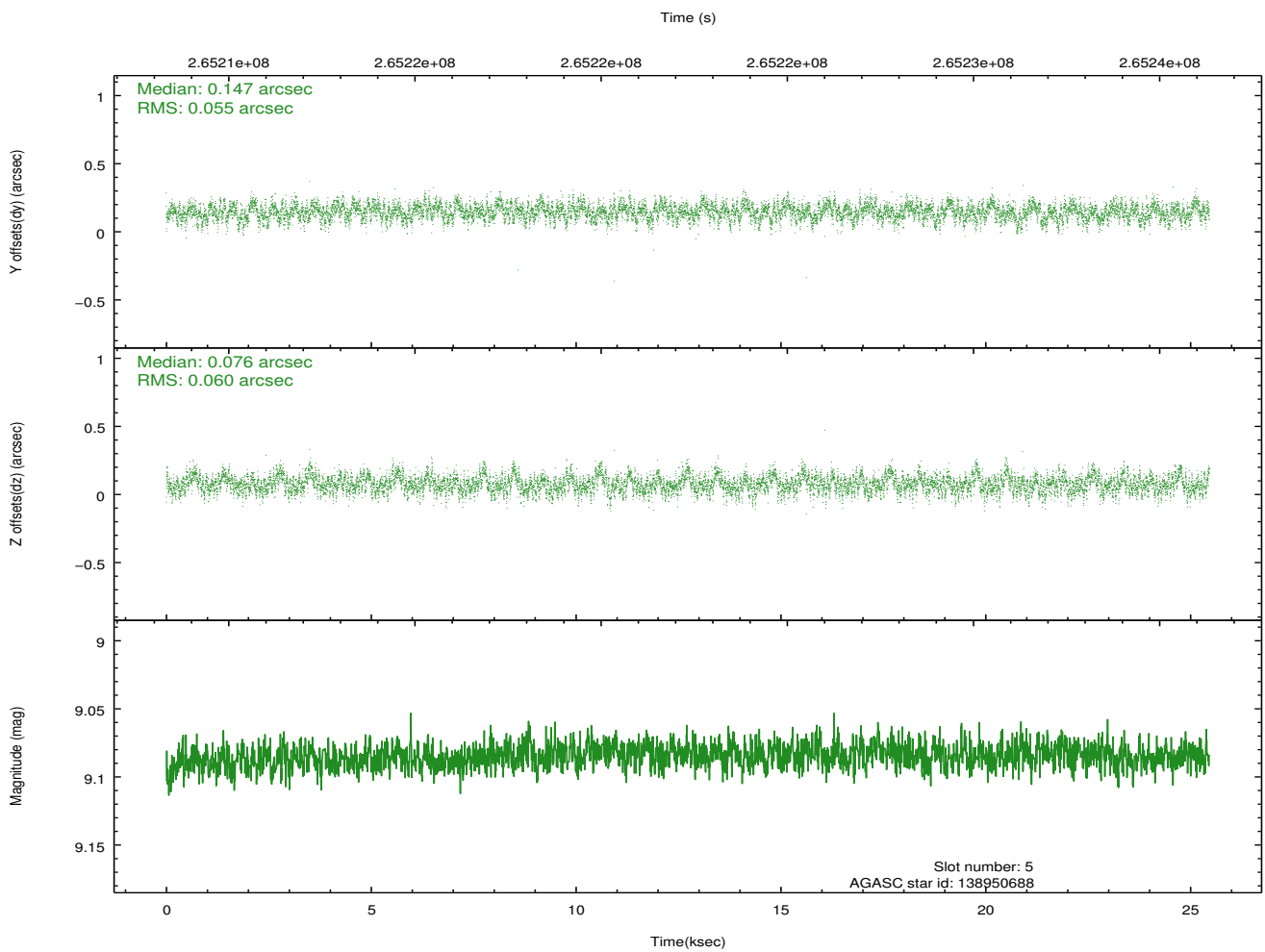
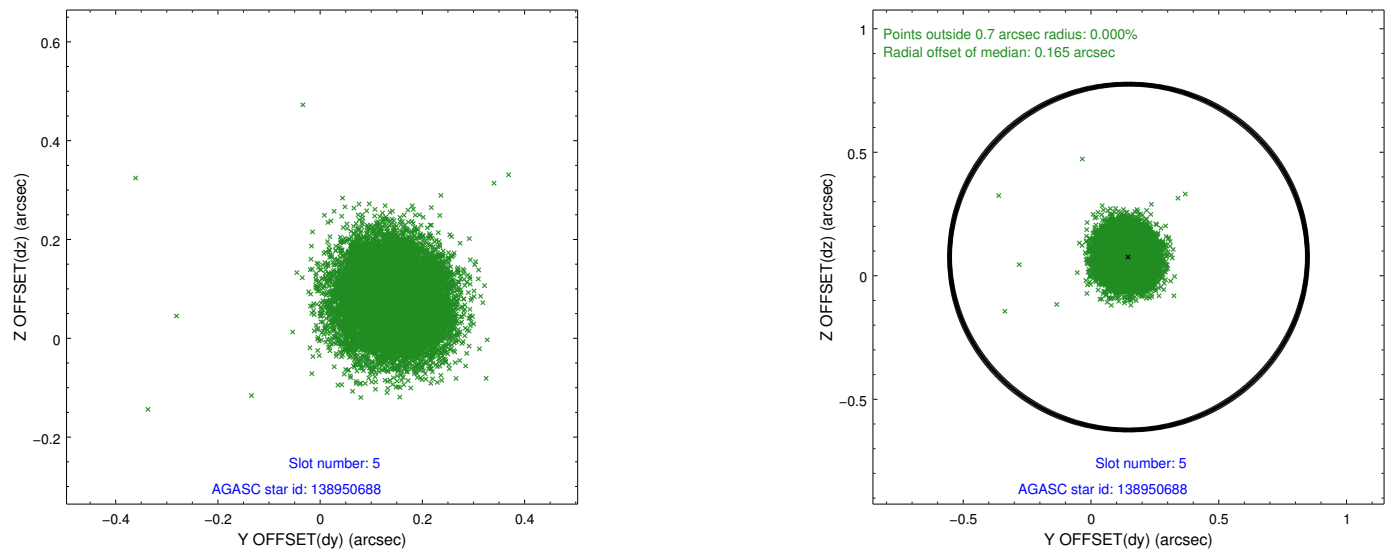
2.4.1 Slot 3



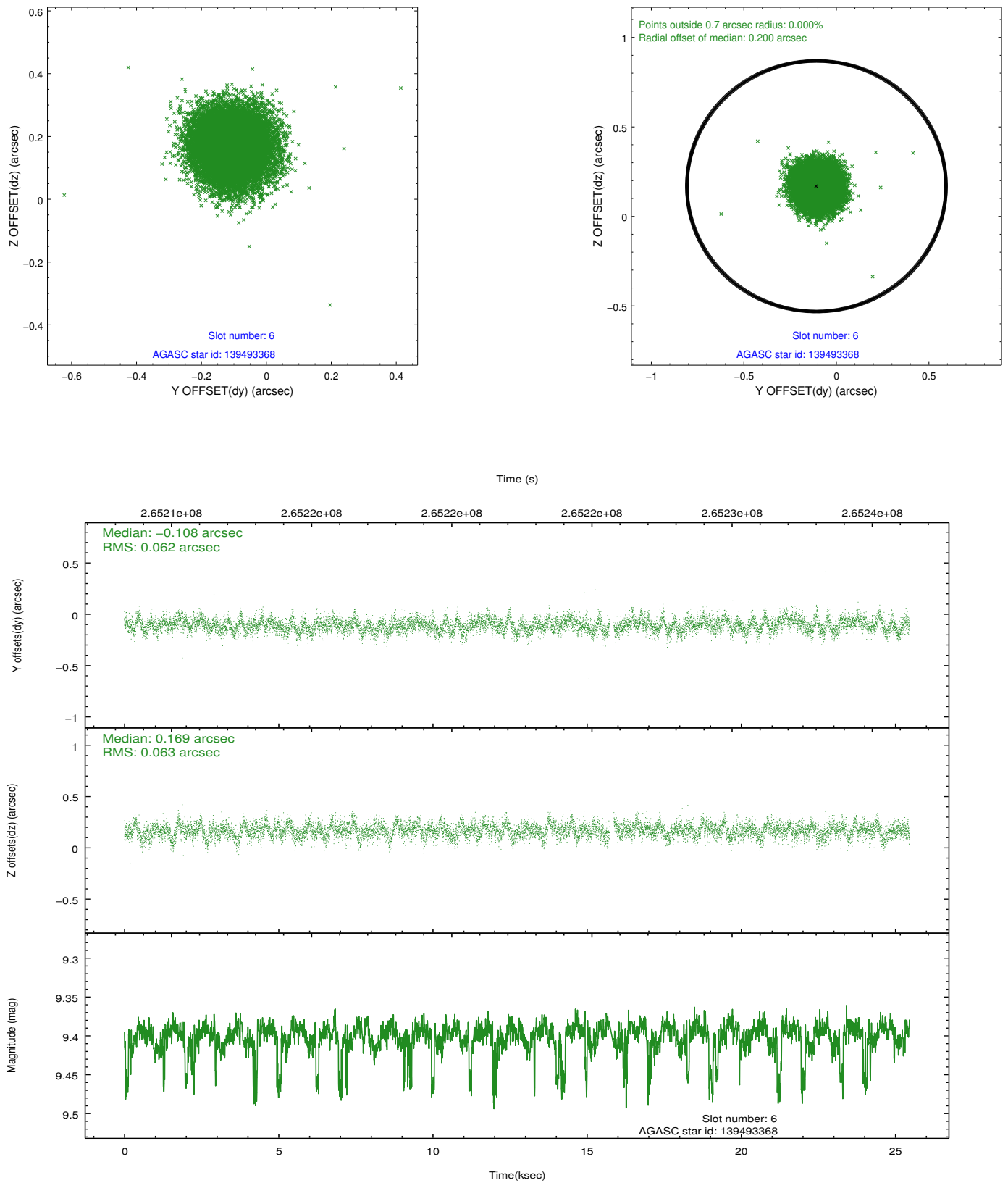
2.4.2 Slot 4



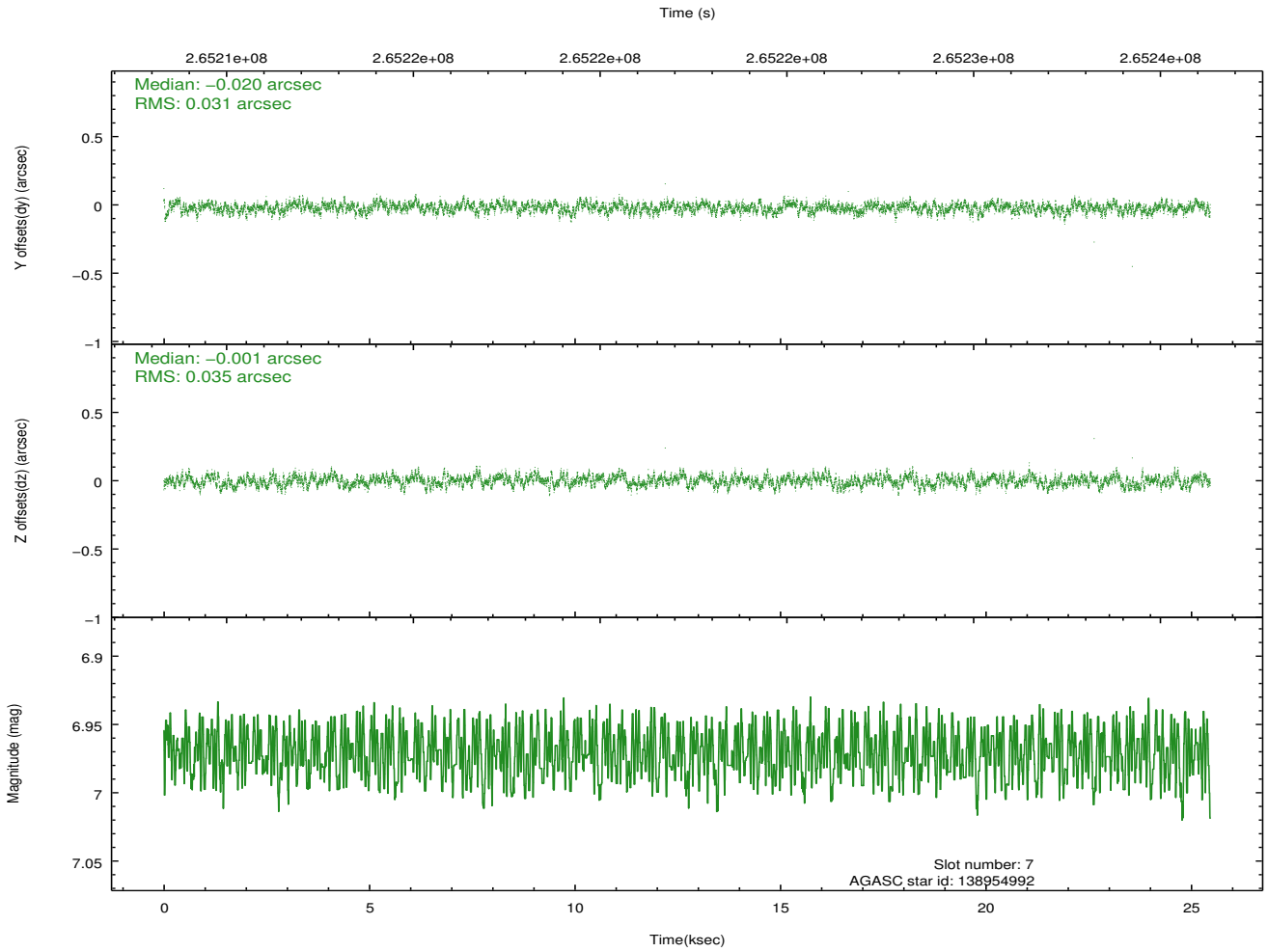
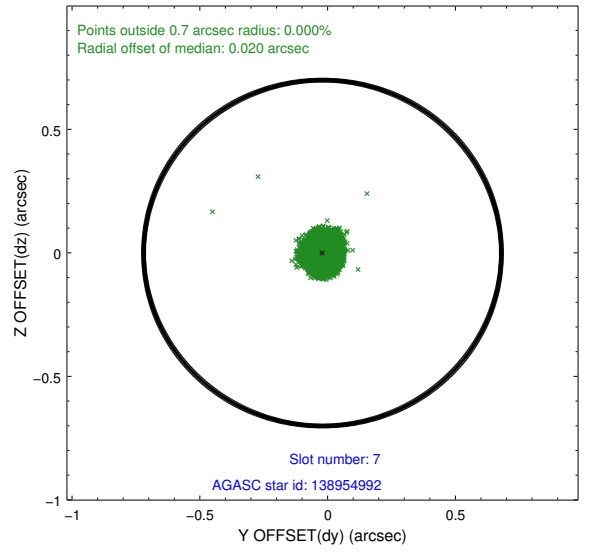
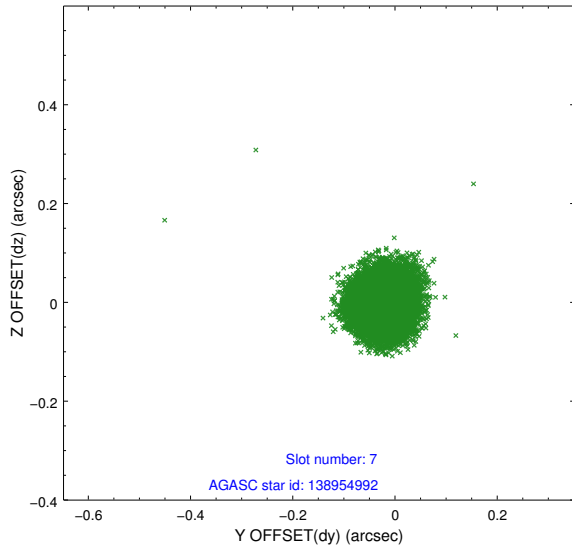
2.4.3 Slot 5



2.4.4 Slot 6

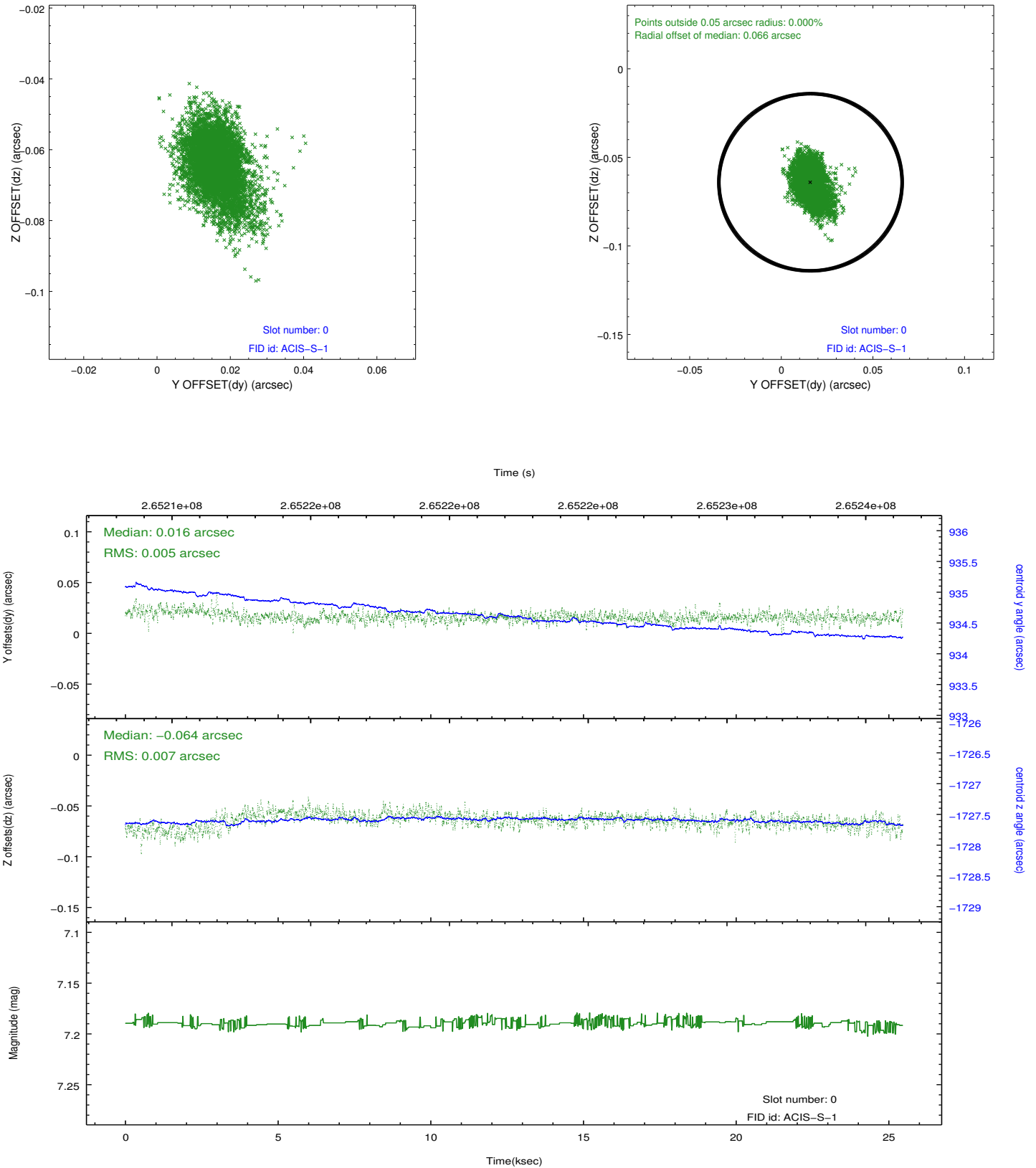


2.4.5 Slot 7

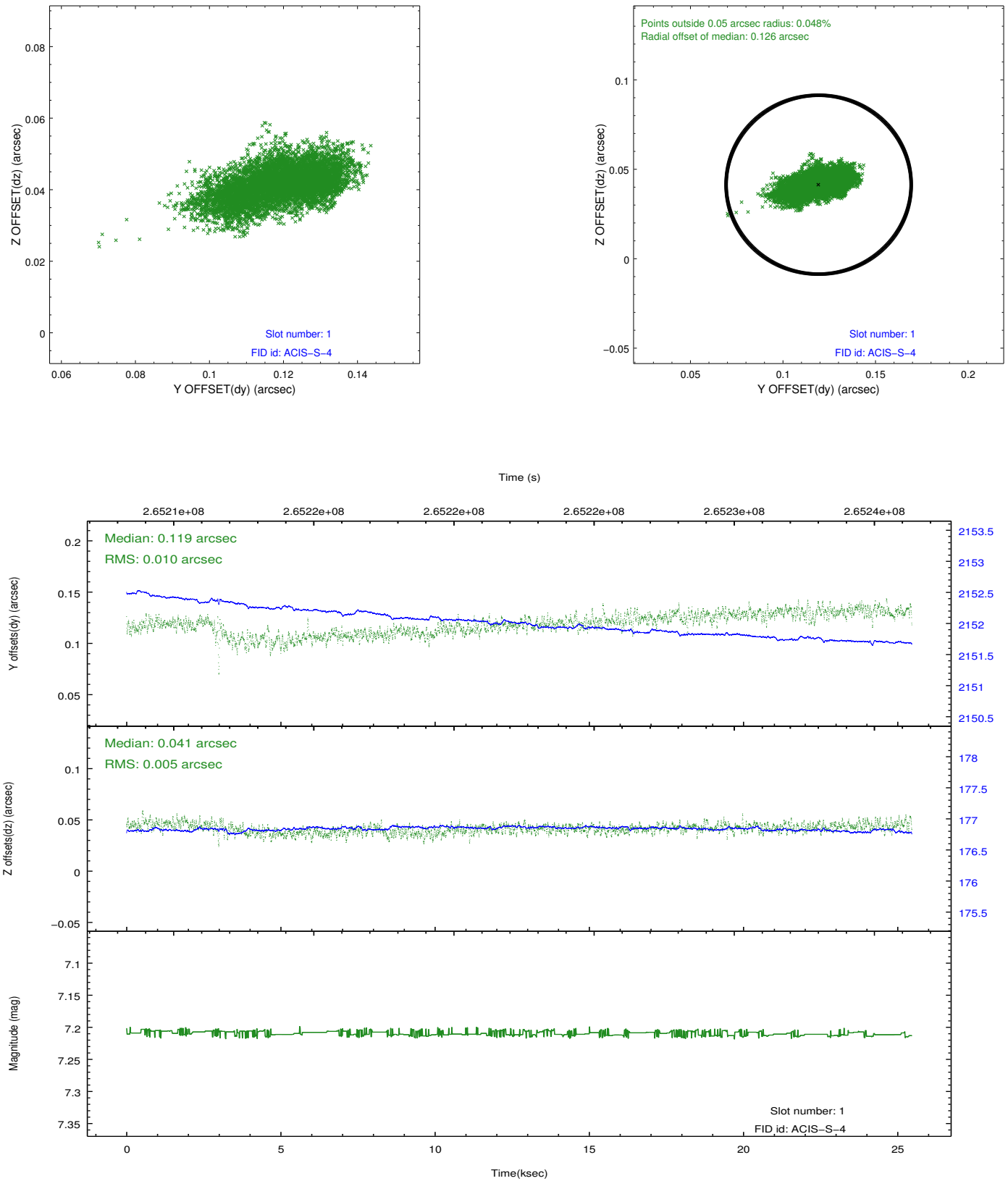


2.5 FID Slots

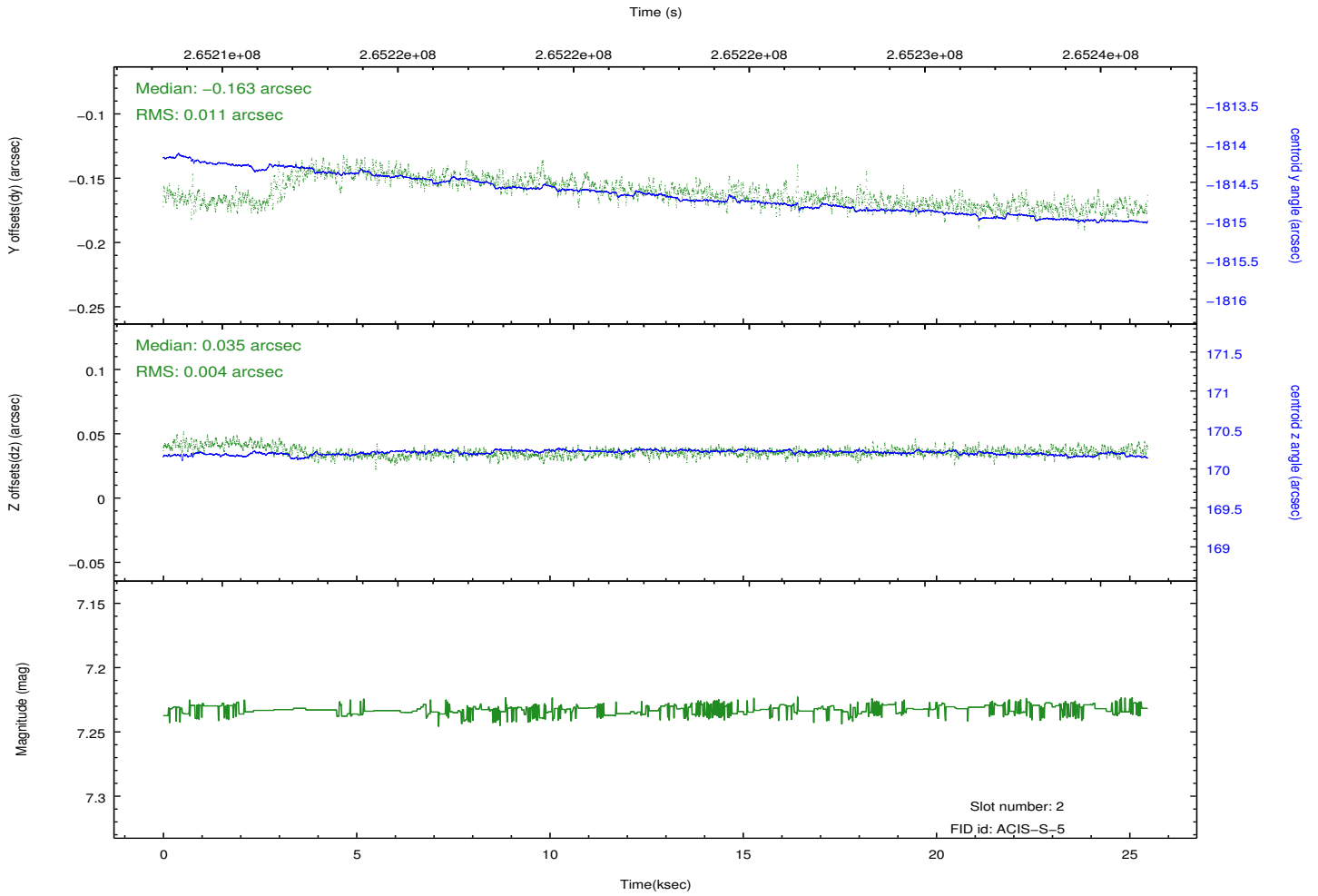
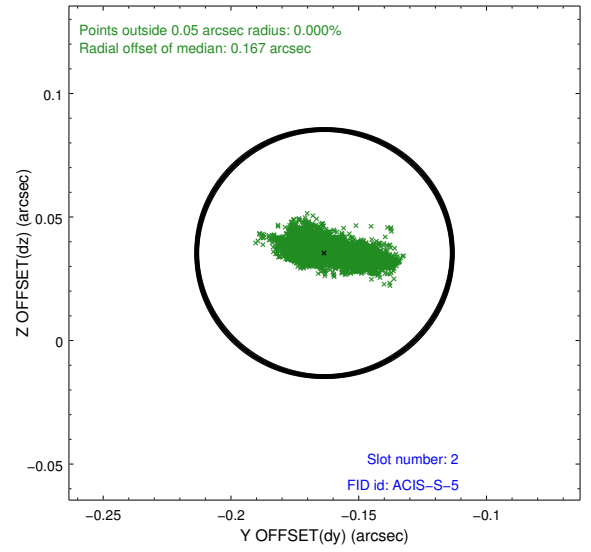
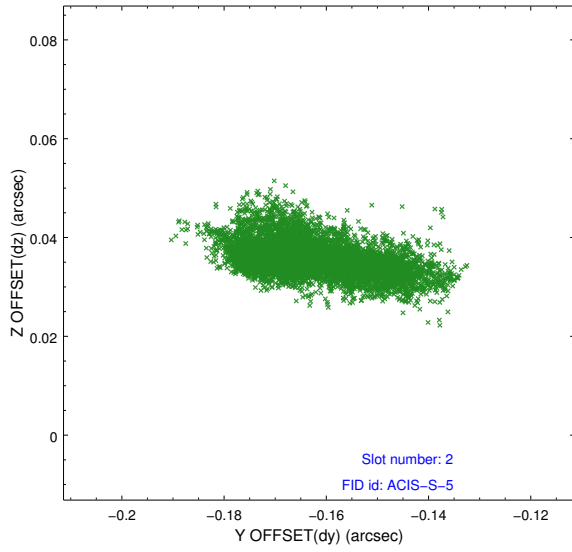
2.5.1 Slot 0



2.5.2 Slot 1



2.5.3 Slot 2



A Summary

A.1 Status

V&V Scientist	Jen Lauer
V&V Date (YYYY-MM-DD)	2012.04.03
V&V Edition	1
V&V Disposition and Status	OK
V&V Charge Time	24.9503999

A.2 Comments